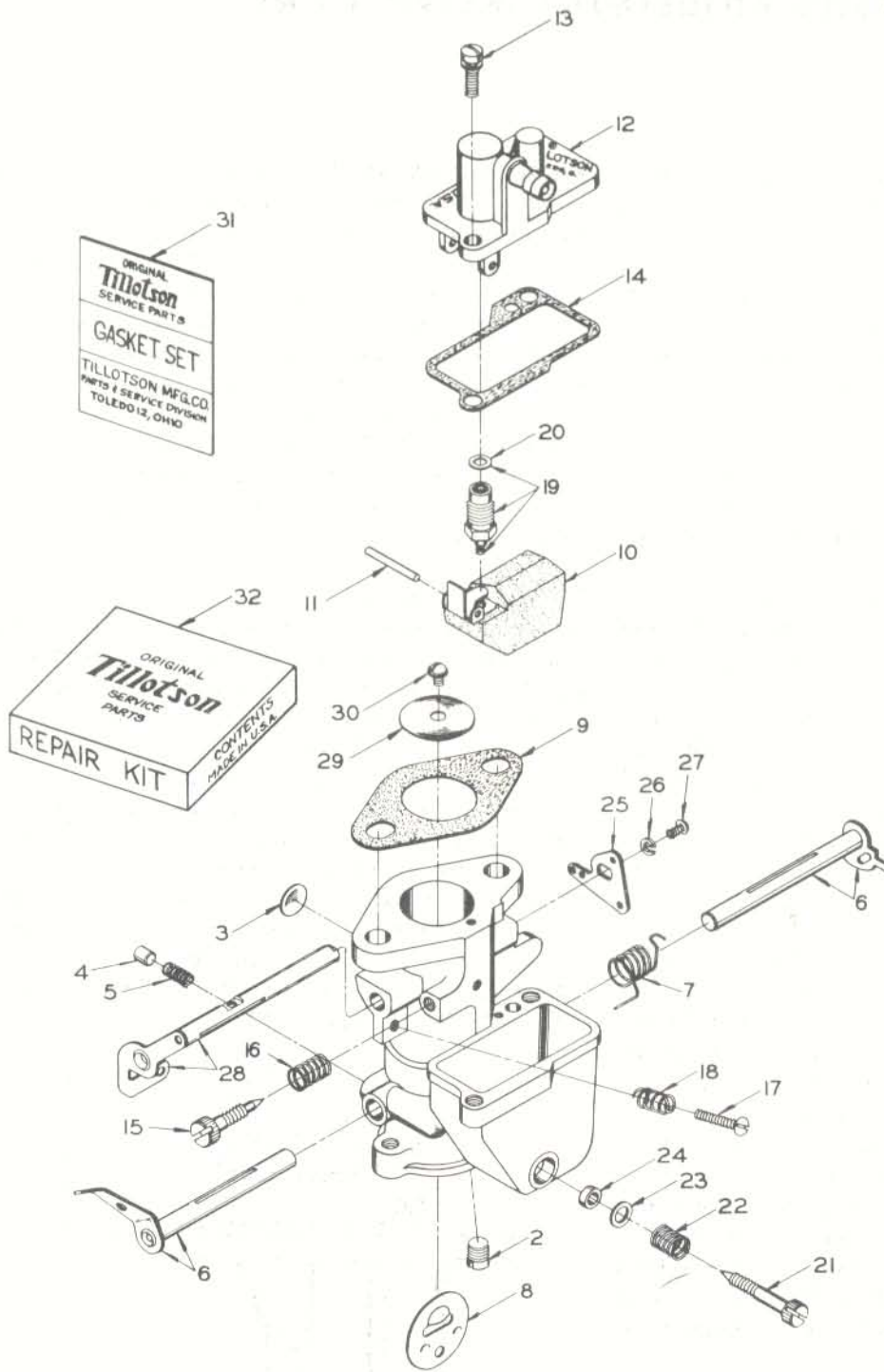




# E Series PARTS LIST SECTION

## CARBURETORS

Illustration of Basic Parts standard throughout E Series Carburetor. For individual model listings see following pages.



Ref. No.	Part Name
2	Body Channel Plug Screw
3	Body Channel Welch Plug
4	Choke Friction Pin
5	Choke Friction Spring
6	Choke Shaft & Lever
7	Choke Shaft Return Spring
8	Choke Shutter
9	Flange Gasket
10	Float
11	Float Lever Pin
12	Float Bowl Cover
13	Float Bowl Cover Screw & Lockwasher (2)
14	Float Bowl Cover Gasket
15	Idle Adjustment Screw
16	Idle Adjustment Screw Spring
17	Idle Speed Regulating Screw
18	Idle Speed Regulating Screw Spring
19	Inlet Needle, Seat & Gasket
20	Inlet Seat Gasket
21	Main Adjustment Screw
22	Main Adjustment Screw Spring
23	Main Adjustment Screw Washer
24	Main Adjustment Screw Packing
25	Throttle Lever
26	Throttle Lever Lockwasher
27	Throttle Lever Retaining Screw
28	Throttle Shaft & Lever
29	Throttle Shutter
30	Throttle Shutter Screw & Lockwasher
31	Gasket & Packing Set
32	Repair Parts Kit

Parts illustrated are typical in appearance, and may not look exactly like the part required.



## E SERIES ADJUSTMENT INSTRUCTIONS

Before starting engine check the fuel supply in tank. Open Fuel Line Shut Off Valve and be certain air valve on Fuel Tank cap is open.

Separate manual carburetor adjustments are provided. Main Adjustment Screw adjusts power range mixture and Idle Adjustment Screw adjusts idle mixture at closed throttle and Idle Speed Regulating Screw sets required idling speed.

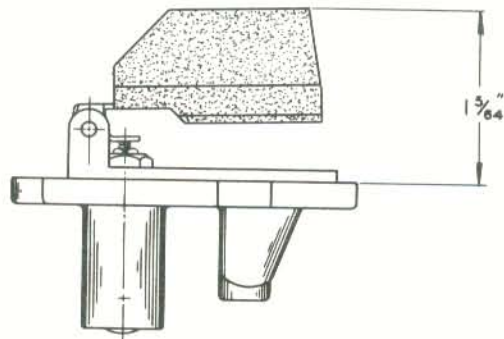
**INITIAL ADJUSTMENT:** Completely close Idle Adjustment Screw by turning in (clockwise) until seated (without forcing) then turn back in opposite direction three-fourths ( $3/4$ ths) of a turn. Proceed in like manner with Main Adjustment Screw except open one (1) full turn after first being closed. Now choke and start engine in usual manner and run until thoroughly warm.

**POWER RANGE ADJUSTMENT:** With engine running at a constant speed of approximately 4000 rpm, slowly turn Main Adjustment Screw inward (clockwise) until motor begins to lose speed, then slowly turn back in opposite direction (usually  $1/8$ th to  $1/4$ th of a turn) until maximum speed and power is obtained which is then correct adjustment.

**IDLE RANGE ADJUSTMENT:** This adjustment should only be made AFTER the above mentioned power range adjustment has been completed. Close throttle and allow engine to idle at slightly faster than normal idling speed requirements, by turning Idle Speed Regulating Screw inward. Next, slowly turn Idle Adjustment Screw inward (clockwise) until engine begins to lose speed and miss or flutter, then turn back in opposite direction (usually about  $1/4$ th of a turn) until engine functions smoothly and steadily. Now slowly adjust Idle Speed Regulating Screw until desired idling speed is obtained. This will then be final adjustment setting for proper idling performance.

**FINAL ADJUSTMENT:** Alternately open and close throttle a few times for acceleration test. If acceleration hesitancy or stalling at idle speed occurs, entire adjustment procedure, outlined above, should be repeated bearing in mind that either a rich or lean adjustment causes flatness. Preceding instructions cover Cold Engine start only. Warm Engine only requires opening of throttle and one or two vigorous pulls on starter rope without further carburetor adjustment. Regardless of altitude or climatic conditions a correct carburetor adjustment can be made by following the above instructions - which eliminates jet changes.

**FLOAT LEVEL:** Remove carburetor Float Bowl Cover and float mechanism assembly. Then remove Float Bowl Cover Gasket and with complete assembly in upside down position and Float Lever Tang resting on seated Inlet Needle, a measurement of one and five sixty-fourths ( $1-5/64$ ths) inches should be maintained from free end flat rim, or edge, of cover (minus gasket) to the toe of the float. Measurement can be checked with a standard straight rule or depth gauge. If necessary to raise or lower float level setting, remove Float Lever Pin and Float, then carefully bend Float Lever Tang (which contacts Inlet Needle) up or down as required, to obtain correct measurement. (DO NOT CHANGE FLOAT LEVEL SETTING FROM MANUFACTURER'S SPECIFICATIONS.)







**BASIC PARTS ILLUSTRATIONS:** See Front Page for illustrations corresponding to reference numbers in list below.

Model	Year Built	Superseding Model	Equipment
E-1A . . . . .	1958 . . . . .	E-1B . . . . .	. Lauson Engine
E-1B . . . . .	1959 . . . . .	. . . . .	. Lauson Engine
E-2A . . . . .	1959-60 . . . . .	E-2B . . . . .	. Lauson Engine
E-3A . . . . .	1958 . . . . .	E-3B . . . . .	. Lauson Engine
E-3B . . . . .	1959 . . . . .	. . . . .	. Lauson Engine
E-4A . . . . .	1959 . . . . .	E-4B . . . . .	. Lauson Engine
E-4AR . . . . .	1959 . . . . .	E-4B . . . . .	. Lauson Engine
E-4B . . . . .	1959 . . . . .	. . . . .	. Lauson Engine

Ref. No.	Part Name	E-1A	E-2A	E-3A	E-3B	E-4A
		E-1B	E-2B			E-4B
2	Body Channel Plug Screw . . . . .	011561	011561	011561	011561	011561
3	*Body Channel Welch Plug . . . . .	02531	02531	02531	02531	02531
4	Choke Friction Pin . . . . .	----	----	05454	05454	----
5	Choke Friction Spring . . . . .	----	----	08805	08805	----
6	Choke Shaft & Lever . . . . .	011557	011557	011674	011674	011557
7	Choke Shaft Return Spring . . . . .	011558	011558	----	----	011558
8	#Choke Shutter . . . . .	011528	011528	011528	011528	011528
9	Flange Gasket . . . . .	08880	08880	08880	08880	08880
10	Float . . . . .	011523	011523	011523	011523	011523
11	*Float Lever Pin . . . . .	011564	011564	011564	011564	011564
12	Float Bowl Cover . . . . .	011525	011525	011525	011525	011525
13	Flt. Bowl Cover Screw & Lockwasher (2)	08315	08315	08315	08315	08315
14	Float Bowl Cover Gasket . . . . .	011526	011526	011526	011526	011526
15	*Idle Adjustment Screw . . . . .	011563	011563	011563	011563	011563
16	*Idle Adjustment Screw Spring . . . . .	08793	08793	08793	08793	08793
17	*Idle Speed Regulating Screw . . . . .	011565	011565	011565	011565	011565
18	*Idle Speed Regulating Screw Spring . . . . .	011431	011431	011431	011431	011431
19	*Inlet Needle, Seat & Gasket . . . . .	011653	011653	011653	011653	011653
20	Inlet Seat Gasket . . . . .	010165	010165	010165	010165	010165
21	*Main Adjustment Screw . . . . .	011562	011562	011562	011562	011562
22	*Main Adjustment Screw Spring . . . . .	08793	08793	08793	08793	08793
23	*Main Adjustment Screw Washer . . . . .	011428	011428	011428	011428	011428
24	Main Adjustment Screw Packing . . . . .	011401	011401	011401	011401	011401
25	Throttle Lever . . . . .	----	011966	----	----	----
26	Throttle Lever Lockwasher . . . . .	----	06396	----	----	----
27	Throttle Lever Ret. Screw . . . . .	----	06393	----	----	----
28	Throttle Shaft & Lever . . . . .	011598	011968	011598	011760	011760
29	Throttle Shutter . . . . .	09408	09408	09408	09408	011675
30	Throttle Shutter Screw & Lockwasher . . . . .	08942	08942	08942	08942	08942
31	<b>*GASKET &amp; PACKING SET</b> . . . . .	GS-147	GS-147	GS-147	GS-147	GS-147
32	<b>REPAIR PARTS KIT</b> . . . . .	RK-383	RK-383	RK-383	RK-383	RK-383

(\*) Indicates contents of REPAIR PARTS KIT.

(#) 011528 Choke Shutter is of new snap fit permanent installation type (without use of retaining screw). It can only be correctly removed, if and when extremely necessary, by holding choke shutter mechanism in fully closed position, then placement of a screw driver bit against the small convex portion of shutter which can be flattened by two or three light downward taps on screw driver. Shutter can then be pulled out of shaft slot with pliers but must be replaced with new shutter carefully inserted with convexed portion again on right side.



**BASIC PARTS ILLUSTRATIONS:** See Front Page for illustrations corresponding to reference numbers in list below.

Model	Year Built	Superseding Model	Equipment
E-5A . . . . .	1959 . . . . .	E-5AR . . . . .	. Lauson Engine
E-5AR . . . . .	1959 . . . . .	. . . . .	. Lauson Engine
E-6A . . . . .	1959-60 . . . . .	. . . . .	. Lauson Engine
E-7A . . . . .	1959 . . . . .	. . . . .	. Lauson Engine
**E-8A . . . . .	1959-60 . . . . .	. . . . .	. Lauson Engine
**E-9A . . . . .	1959-60 . . . . .	. . . . .	. Lauson Engine
E-10A . . . . .	1959-60 . . . . .	E-10B . . . . .	. Lauson Engine

(\*\*) Complete carburetor must be obtained from Lauson Power Products with their parts attached.

Ref. No.	Part Name	E-5A	E-6A	E-7A	E-8A	E-9A	E-10A
		E-5AR					E-10B
2	Body Channel Plug Screw . . . . .	011561	011561	011561	011561	011561	011561
3	*Body Channel Welch Plug . . . . .	02531	02531	02531	02531	02531	02531
4	Choke Friction Pin . . . . .	05454	----	05454	----	05454	05454
5	Choke Friction Spring . . . . .	08805	----	08805	----	08805	08805
6	Choke Shaft & Lever. . . . .	011674	011557	011674	011557	011674	011674
7	Choke Shaft Return Spring . . . . .	----	011558	----	011558	----	----
8	#Choke Shutter. . . . .	011528	011528	011528	011528	011528	011528
9	Flange Gasket . . . . .	08880	08880	08880	08880	08880	08880
10	Float . . . . .	011523	011523	011523	011523	011523	011523
11	*Float Lever Pin . . . . .	011564	011564	011564	011564	011564	011564
12	Float Bowl Cover . . . . .	011525	011525	011525	011525	011525	011525
13	Flt. Bowl Cover Screw & Lockwasher (2)	08315	08315	08315	08315	08315	08315
14	Float Bowl Cover Gasket . . . . .	011526	011526	011526	011526	011526	011526
15	*Idle Adjustment Screw . . . . .	011563	011563	011563	012058	012058	011563
16	*Idle Adjustment Screw Spring . . . . .	08793	08793	08793	08793	08793	08793
17	*Idle Speed Regulating Screw . . . . .	011565	011565	011565	011565	011565	011565
18	*Idle Speed Regulating Screw Spring . . . . .	011431	011431	011431	011431	011431	011431
19	*Inlet Needle, Seat & Gasket . . . . .	011653	011653	011653	011653	011653	011653
20	Inlet Seat Gasket. . . . .	010165	010165	010165	010165	010165	010165
21	*Main Adjustment Screw . . . . .	011562	011562	011562	011562	011562	011562
22	*Main Adjustment Screw Spring . . . . .	08793	08793	08793	08793	08793	08793
23	*Main Adjustment Screw Washer . . . . .	011428	011428	011428	011428	011428	011428
24	Main Adjustment Screw Packing . . . . .	011401	011401	011401	011401	011401	011401
25	Throttle Lever . . . . .	----	011966	011966	011966	011966	011966
26	Throttle Lever Lockwasher . . . . .	----	06396	06396	06396	06396	06396
27	Throttle Lever Retaining Screw . . . . .	----	06393	06393	06393	06393	06393
28	Throttle Shaft & Lever . . . . .	011760	011968	011968	011968	011968	011968
29	Throttle Shutter . . . . .	011675	09408	09408	011675	011675	09408
30	Throttle Shutter Screw & Lockwasher . . . . .	08942	08942	08942	08942	08942	08942
31	*GASKET & PACKING SET . . . . .	GS-147	GS-147	GS-147	GS-147	GS-147	GS-147
32	REPAIR PARTS KIT . . . . .	RK-383	RK-383	RK-383	RK-437	RK-437	RK-383

(\*) Indicates contents of REPAIR PARTS KIT.

(#) 011528 Choke Shutter is of new snap fit permanent installation type (without use of retaining screw). It can only be correctly removed, if and when extremely necessary, by holding choke shutter mechanism in fully closed position, then placement of a screw driver bit against the small convexed portion of shutter which can be flattened by two or three light downward taps on screw driver. Shutter can then be pulled out of shaft slot with pliers but must be replaced with new shutter carefully inserted with convexed portion again on right side.