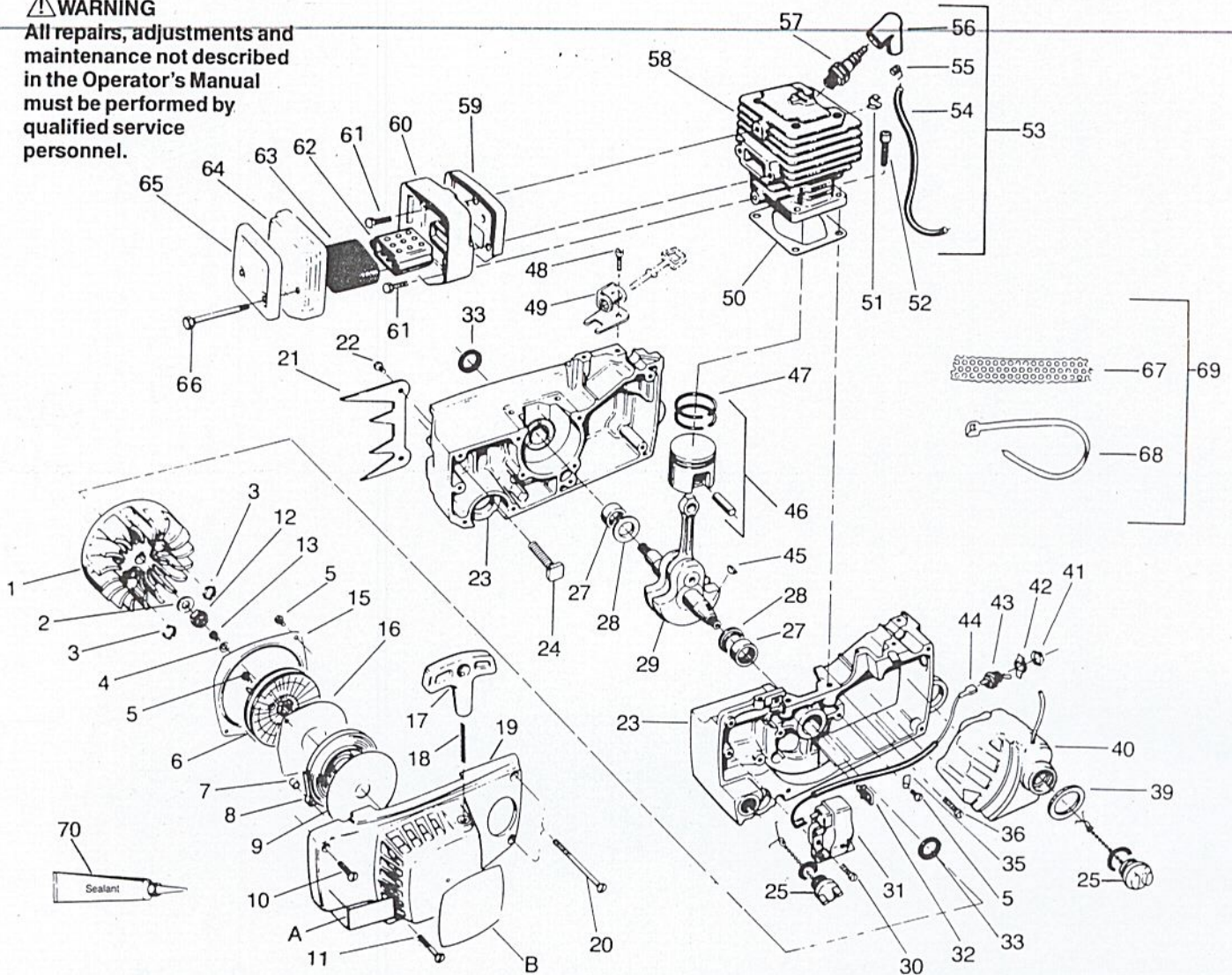


**⚠ WARNING**  
**All repairs, adjustments and maintenance not described in the Operator's Manual must be performed by qualified service personnel.**



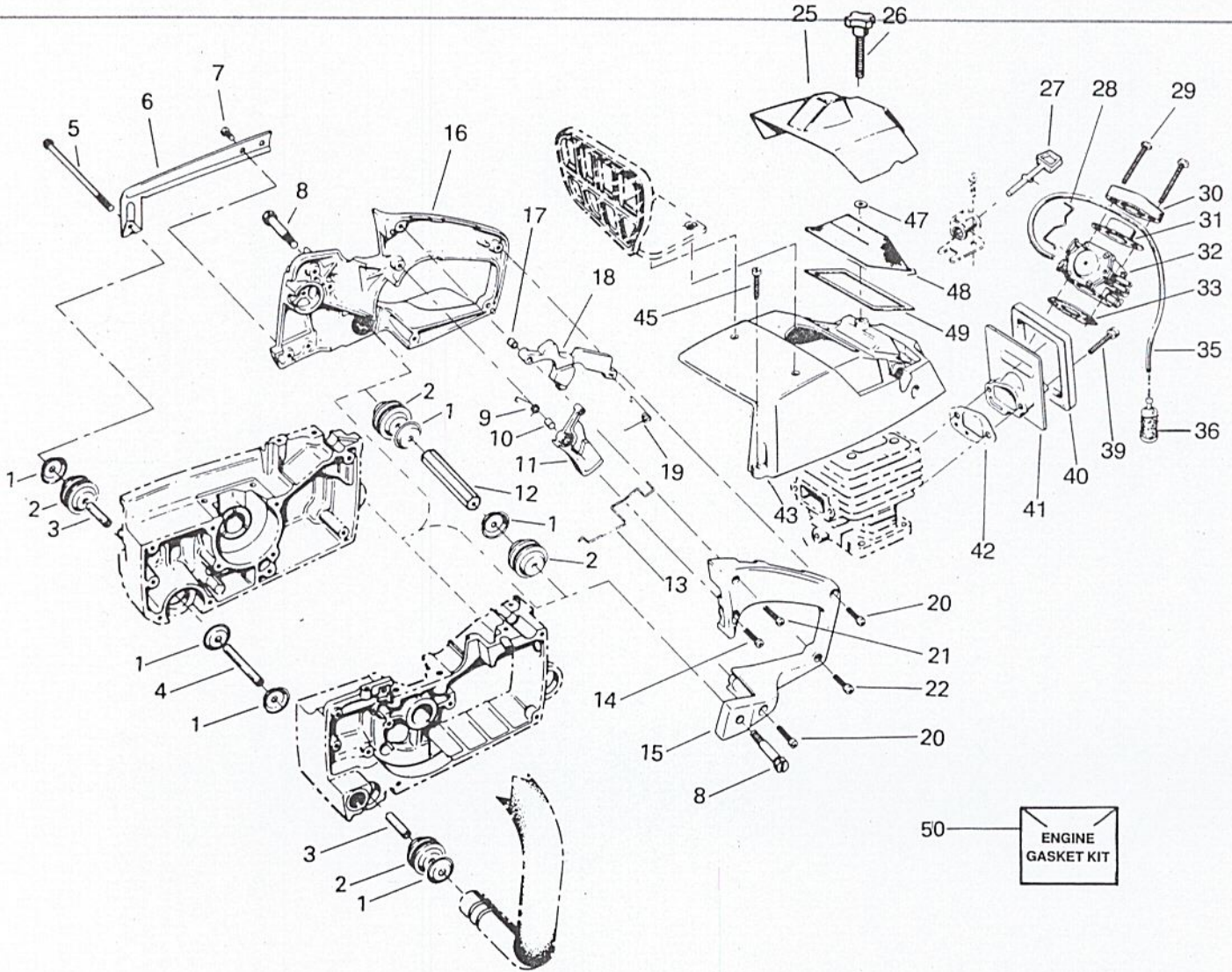
KEY NO.	PART NO.	QTY.	DESCRIPTION	KEY NO.	PART NO.	QTY.	DESCRIPTION	KEY NO.	PART NO.	QTY.	DESCRIPTION	
1	39113	1	Flywheel Ass'y. (Incl. #3)	25	10438	1	* Oil & Fuel Cap Kit (Incl. "O" Rings)	✓ 50	19129	1	* Cylinder Gasket	
2	1626	1	Washer - Flywheel					51	15195	1	Clip - High Tension Lead Cylinder	
3	23817	2	Spring - Starter Dog					52	1624	4	Cylinder Screw - 1/4 - 20 x 1/8	
4	15123	1	Washer - Starter Pulley	27	32051	2	Bearing - Crankshaft	53	39102	1	High Tension Lead Assembly (Incl. #54, 55 & 56)	
5	1726	6	Screw - 3/2 x 5/16 - Hex Hd. - Disc Mounting (also Air Baffle & Clamp Head)	28	15354	2	Thrust Washer - Crankshaft	54	39096	1	High Tension Lead	
				29	24492	1	Crankshaft Ass'y. (Incl. Connecting Rod and Bearing)	55	39071	1	Connector - Spark Plug	
6	10674	1	Pulley - Starter	30	15425	2	Screw - 10 - 24 x 7/8 - Module Mnt.	56	39097	1	Boot - Spark Plug	
7	24329	1	Bushing Recoil Spring	31	39093	1	Ignition Module (Incl. #44 & 53)	57	30073	1	Spark Plug	
8	42051	1	Spring Starter Recoil	32	24334	1	Clamp - High Tension Lead - Crankcase	58	12069	1	Cylinder	
9	42053	1	Disc. Recoil Spring - Outer	33	19097	2	* Seal - Crankshaft	59	24388	1	Back Plate - Muffler	
10	15364	1	Screw - 10 - 24 x 1 Oval Hd. Fan Housing - (Top Front)	35	23661	2	Clamp - Module Lead	60	24387	1	Muffler Body	
11	15365	1	Screw - 10 - 24 x 1-3/8 Fan Housing (Lower Front)	36	15238	9	Screw - 10 - 24 x 11/16 - Fil. Hd. - Crankcase	61	15374	2	Screw - 1/4 - 24 x 1/2 - Hex Hd. - Muffler Body to Cylinder	
✓ 12	1722	1	Flywheel Nut - 3/8 - 24	41	23575	1	Nut - Switch Mounting	62	24384	2	Diffuser - Muffler	
✓ 13	15036	1	Screw - 10 - 24 x 1/8 - Starter Pulley	42	24858	2	Plate - Ignition Switch	63	24385	1	Screen - Spark Arrestor	
15	24232	1	Air Baffle	43	23732	1	Switch - Toggle	64	24391	1	Muffler Cover	
16	42054	1	Disc. Recoil Spring - Inner	44	—	1	Leadwire - Switch	65	24392	1	Shield Muffler	
17	42056	1	Handle Starter Rope					66	15375	2	Screw - 1/4 - 20 x 2-1/2 - Hex Cap - Muffler Cover	
18	42052	1	Rope Starter (Bulk B128)	39115	39099			67	11746	1	Screen - Winter (Optional)	
19	12034	1	Fan Housing Assembly	2595	10355	1	Key - Flywheel	68	24675	6	Tie Strap (Optional)	
20	15366	2	Screw - 10 - 24 x 3-9/64 - Fan Housing (Rear)	46	10355	1	Piston Assembly (Incl. Piston Pin & Rings)	69	69079	1	Winter Kit (Incl. 67 & 68) - Optional	
21	24476	1	Spur	47	24756	2	Rings - Piston	✓ 70	30054	1	Sealant - Crankcase (Optional)	
22	15434	2	Screw - 10 - 24 x 9/16 - Hex Hd. - Spur	48	15368	1	Screw - 10 - 24 x 3/8 - Fil. Hd. - Choce Bracket	DECALS	A	24895	1	Decal - Professional User Bow Guide Powerhead only
23	10696	1	Crankcase Ass'y. (Incl. #24, 27, 33 and Oil Cap Ass'y. from page 1; from page 3, includes #30, 36, 47 & one of 34)	49	10347	1	Bracket & Bushing Assembly - Choce	B	24758	1	Decal - Fan Housing	
24	30039	2	Kit - Bar Stud Replmnt. (5/16")					NOT SHOWN	—	—	—	Operator's Manual
								—	64181	1	Bow Guide Manual	Carton - Not Available
								—	66051	1	Carton - Not Available	

✓ = Part Change  
 Key Numbers Excluded: #14, 26, 34, 37 & 38  
 \* Indicates Engine Gasket Kit Contents (Key No. 50, page 2)



**POULAN® PARTS LIST**

**CHAIN SAW  
MODEL: 3700**



KEY NO.	PART NO.	QTY.	DESCRIPTION	KEY NO.	PART NO.	QTY.	DESCRIPTION	KEY NO.	PART NO.	QTY.	DESCRIPTION
1	24376	—	Cup Isolator - See Service Ref. 3.	13	24699	1	Wire Throttle	30	19104	1	* Seal - Adaptor Shield
	6		New Style Rear Isolation System	✓ 14	15369	1	Shoulder Screw - 10 - 24 x 5/8 - Fil. Hd. - Throttle Trigger	31	24349	1	Bracket - Carburetor Seal
	8		Old Style Rear Isolation System	15	*****	1	Rear Handle Left - See Service Ref. 3.	32	35094	1	Carburetor
2	—	4	Isolator - Powerhead Rear Handle	16	*****	1	Rear Handle Right - See Service Ref. 3 & 4.	33	19099	1	* Gasket - Carburetor to Adaptor
	24373		Use on Guide Bar Powerhead	17	32053	1	Bushing - Throttle Lock	35	21028	1	Fuel Line
	24528		Use on Bow Guide Powerhead	18	24357	1	Throttle Lock	✓ 36	91878	1	Fuel Pick-up Ass'y.
3	15362	2	Spacer - Front Handlebar Isolator Mount	19	24378	1	Spring - Throttle Lock	39	15414	2	Screw - 10 - 24 x 1-3/16 - Hex Hd. Adaptor to Cylinder
4	15361	1	Spacer - Front Handlebar - Center - Isolator Mount	✓ 20	15403	2	Screw - 10 - 24 x 13/16 - Fil. Hd. - Rear Handle	40	19107	1	* Seal - Carburetor Adaptor
✓ 5	15391	1	Screw - 1/4 - 20 x 5-5/16	21	15393	1	Screw - 8 - 32 x 13/16 - Fil. Hd. - Rear Handle Throttle Lock	41	24229	1	Carburetor Adaptor
6	*****	1	Handle Brace - See Service Ref. 4.	✓ 22	15608	1	Screw - 8 - 32 x 9/16 - Fil. Hd. - Rear Handle Lower	42	19101	1	Gasket - Adaptor to Cylinder
7	*****	2	Screw - 1/4 - 20 x 3/4 Button Hd. - See Service Ref. 3.	✓ 25	25892	1	Cover - Carburetor	✓ 43	25893	2	Cylinder Shield
8	15462	2	Shoulder Screw 1/4 - 20 - Isolator	26	24482	1	Knob - Carburetor Cover	45	15168	3	Screw - 10 - 24 x 5/8 - Fil. Hd. - Cylinder Shield to Crankcase
9	25469	1	Spring - Trigger	✓ 27	25919	1	Choke Rod	47	24877	1	Retainer - Carb. Cover Knob
10	32059	1	Bushing - Trigger	✓ 28	24383	1	Wire - Choke	✓ 48	24548	1	Air Filter
11	26013	1	Throttle - Trigger	✓ 29	15245	2	Screw - 10 - 24 x 11/16 - Fil. Hd. Carburetor to Adaptor	✓ 49	19123	1	* Gasket - Air Filter
12	25258	1	Spacer - Isolator (Center)					✓ 50	69190	1	* Kit - Engine Gasket (Contents indicated by * on page 1, 2 & 3) - Optional

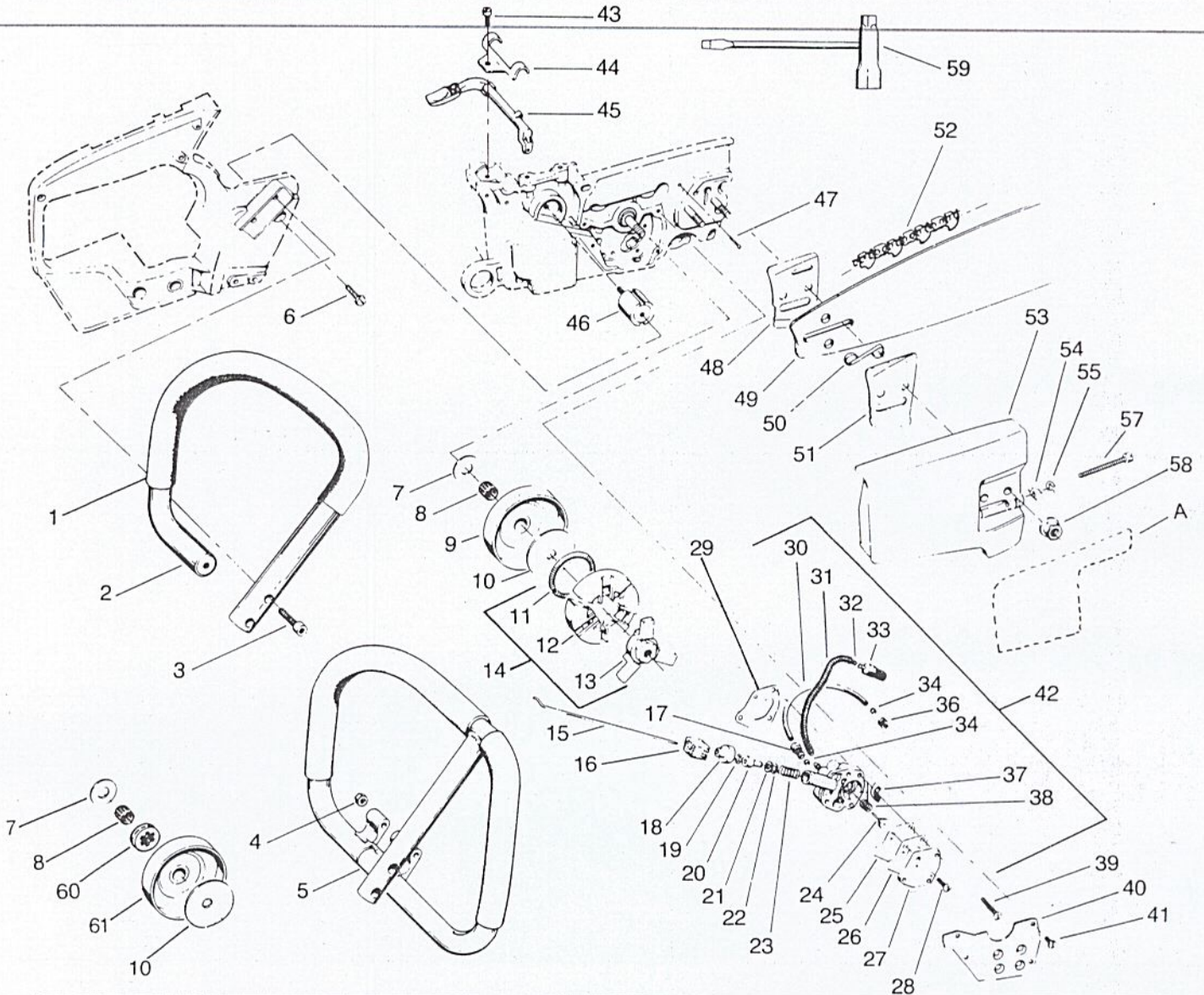
✓ = Part Change

Key Numbers Excluded: #23, 24, 34, 37, 38, 44 & 46

\*\*\*\*\* = See Service Reference

\* Indicates Engine Gasket Kit Contents, Key No. 50, this page.





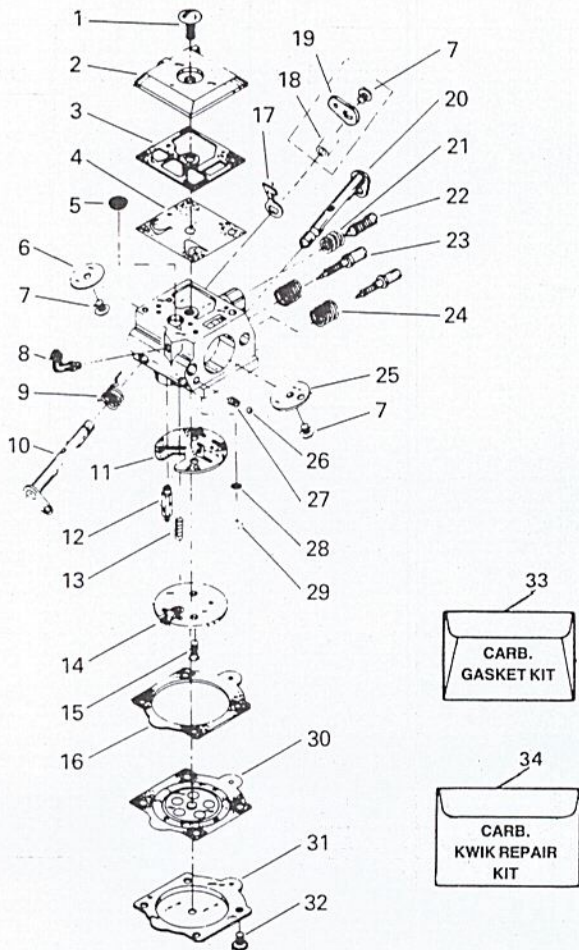
KEY NO.	PART NO.	QTY.	DESCRIPTION	KEY NO.	PART NO.	QTY.	DESCRIPTION	KEY NO.	PART NO.	QTY.	DESCRIPTION
1	69171	1	Kit-Grip-Handlebar (Velvet)	23	23358	1	Spring	44	24351	1	Bracket Lever to Crankcase
2	—	1	Handlebar Assembly	24	22197	1	Ass'y. - Button & Pintle	45	24348	1	Lever-Manual Oiler Isolator Side
	22276		For new Style Handguard (see pg. 4)	25	24345	1	Diaphragm	46	—	1	Use on Guide Bar Powerhead
	22196		For Old Style Handguard (see pg. 4)	26	19102	1	Gasket - Cover to Body	47	24225	1	Use on Bow Guide Powerhead
3	1711	2	Screw - 1/4-20x1-Socket Hd. - Handlebar to Crankcase	27	25987	1	Cover-Pump	48	69185	1	Kit - Oil Vent Replacement
4	1615	1	Locknut - 1/4-20-Wraparound Handle	28	15297	1	Screw - 8-16x5/8 Pan. Hd. - Oil Pump Cover	49	25925	1	Guide Bar Plate - Inner
5	69163	1	Handlebar-Wraparound Handle - Optional for Guide Bar Powerhead only	29	19103	1	Gasket - Oiler Ass'y. to Crankcase	50	55044	1	"S" Clip - (See page 6)
6	15406	1	Screw - 10-24x1/2 - Pan. Hd. - Side Isolator	30	21038	1	Discharge Line Oil (Bulk 8115)	51	25924	1	Guide Bar Plate - Outer
7	15357	1	Thrust Washer	31	24677	1	Spring-Oil Line Protector	52	—	1	Chain
8	32049	1	Bearing-Clutch	32	21031	1	Oil Line (Bulk 8132)	53	—	1	Bar Clamp Ass'y. (Incl. 54-57) Use on Guide Bar Powerhead
9	48069	1	Drum & Sprocket Assembly	—	10289	1	Oil Line Pick-up Assembly (Incl. 30 & 31)	54	11637	1	Use on Bow Guide Powerhead
10	24465	1	Plate Clutch	33	24676	1	Weight-Oil Pick-up Line	55	11692	1	Use on Bow Guide Powerhead
11	24353	1	Spring-Clutch	34	2464	2	Sleeve - 1/8 Tubing	56	25044	1	Pin-Bar Adj.
12	24352	3	Shoe-Clutch	35	15422	1	Tubing Nut-Slotted	57	24419	1	"E" Ring Adj. Screw
13	11625	1	Spider-Clutch	36	15422	1	Tubing Nut-Slotted	58	15385	1	Screw - 10-24x2-5/16" Bar Adj.
14	10291	1	Clutch Ass'y. (Incl. 11, 12 & 13)	37	24691	1	Foam-Oil Pump Vent	59	15445	2	Flange Nut Mounting - 5/16-18
15	24347	1	Rod-Manual Oiler	38	23699	1	Spring-Diaphragm	60	31107	1	Scrench
16	23373	1	Boot - Oiler Rod	39	15401	3	Screw - 8-32x1 - Pan. Hd. - Pump to Crankcase	61	4746	1	Rim-Floating Ass'y Drum & Sprocket
17	2615	1	Tubing Nut	40	24399	1	Cover Plate-Oiler	—	48063	1	Decal
18	23356	1	Cap-Oil Pump	41	15004	4	Screw - 8-32x5/16 - Pan. Hd. - Cover Plate	A	24759	1	Decal-Bar Clamp
19	1611	1	Retainer Ring	42	69062	1	Kit - Oil Pump Ass'y. (Incl. 17-28, 30-33, one of 34 & 36-38) See Service Ref. 2.				
20	23357	1	Plunger	43	15319	1	Screw - 10-24x3/8 - Fil. Hd. - Bracket to Crankcase				
21	19029	1	"O" Ring-Quad Ring								
22	15418	1	Washer-Oiler								

✓ = Part Change      \*Indicates Engine Gasket Kit Contents, Key No. 50, page 2.

Key Nos. Excluded: #25 & 52



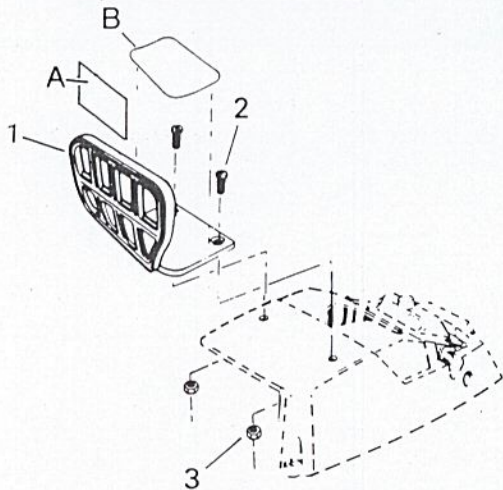
### A. CARBURETOR ASSEMBLY #35094



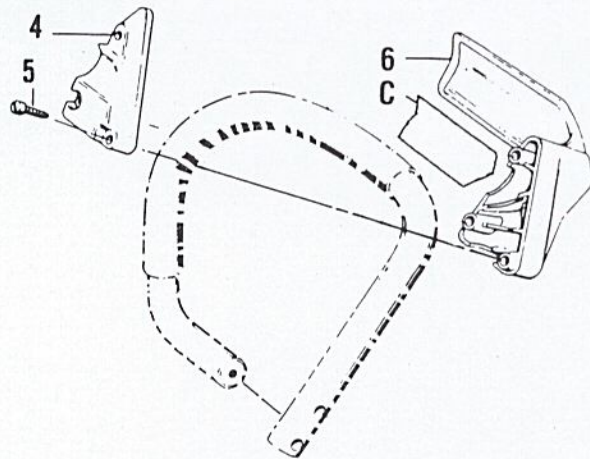
KEY NO.	PART NO.	QTY.	DESCRIPTION
1	35115	1	Screw - Pump Cover
2	35099	1	Cover - Fuel Pump
3	35109	1	Gasket - Fuel Pump
4	35113	1	*Diaphragm - Fuel
5	35069	1	*Screen - Inlet
6	35102	1	Valve - Throttle
7	35015	3	*Screw - Valve
8	35123	1	Fitting - Inlet (Elbow)
9	35119	1	Spring - Throttle Ret.
10	35101	1	Shaft Ass'y. - Throttle
11	35111	1	*Gasket - Circuit
12	35008	1	*Valve - Inlet Needle
13	35118	1	*Spring - Mtrg. Lever
14	35126	1	Plate Ass'y. - Circuit
15	35116	2	*Screw - Circuit Plate
16	35108	1	*Gasket - Mtrg. Diaphragm
17	35105	1	Stop - Throttle
18	35125	1	Bushing - Throttle Lv.
19	35097	1	Lever - Throttle (Outer)
20	35103	1	Shaft Ass'y. - Choke
21	35121	1	Spring - Idle Screw
22	35117	1	Screw - Idle Adj.
23	35122	2	Needle - Hi & Lo
24	35023	2	*Spring - Needle
25	35104	1	Valve - Choke
26	35107	1	*Ball - Choke Friction
27	35022	1	*Spring - Choke Friction
28	35124	1	*Screen - Check Valve
29	35096	1	*Ring - Screen Retaining
30	35114	1	*Diaph. Ass'y. - Mtrg.
31	35098	1	Cover - Mtrg. Diaphragm
32	35021	4	*Screw Ass'y. - Mtrg. Cover
33	35112	1	Gasket Carb. Kit (Incl. #3 & 16) - Optional
34	35127	1	Kit - Carb. Kwik Repair - (* indicates contents) - Optional

### B. HANDGUARD SYSTEM

#### NEW STYLE HANDGUARD



#### OLD STYLE HANDGUARD



KEY NO.	PART NO.	QTY.	DESCRIPTION	KEY NO.	PART NO.	QTY.	DESCRIPTION
1	25948	1	Handguard	Decals	—	1	Decal-Kickback
2	15406	2	Screw - 10-24x1/2	A	26850	1	Guide Bar Powerhead
3	1543	2	Nut - #10-24	✓	26156	1	Bow Guide Powerhead
4	24467	1	Cap-Handguard	B	26341	1	Decal-Starting Instructions
5	15509	3	Screw - #10x1 - Pan. Hd. - Handguard	C	—	1	Decal-Kickback Warning
6	24466	1	Handguard	25681	1	Guide Bar Powerhead	
				25383	1	Bow Guide Powerhead	

✓ = Part Change

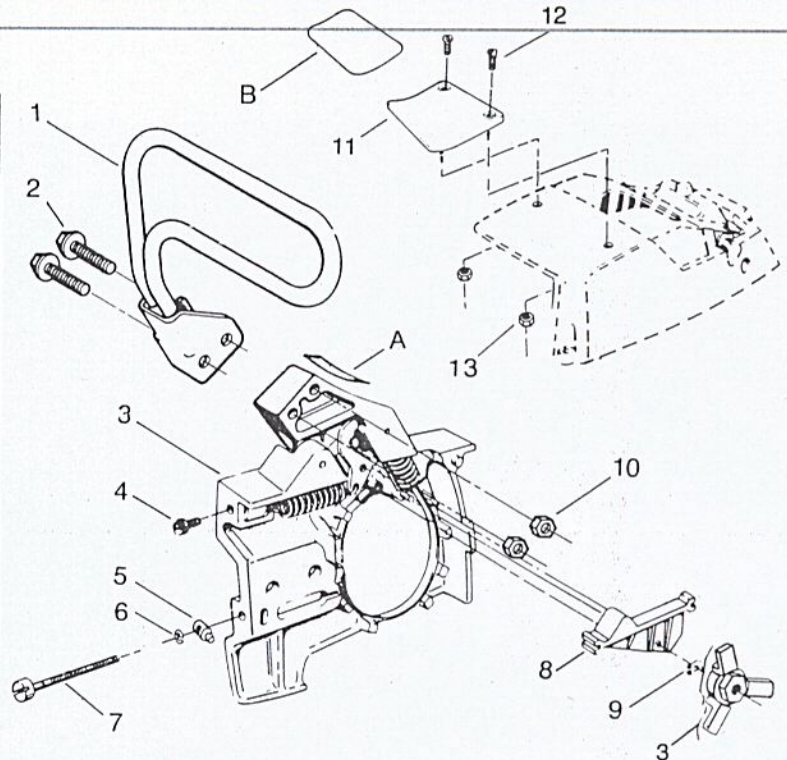


PARTS LIST NO. <b>64276 - 9/1/85</b>		<b>POULAN® PARTS LIST</b>	<b>CHAIN SAW MODEL: 3700</b>
PAGE 5 of 7	REPLACES 64276 - 9/1/84		

### A. CHAIN BRAKE ASSEMBLY — #69198

KEY NO.	PART NO.	QTY. REG.	DESCRIPTION
1	25911	1	Handle - Actuating Arm
✓ 2	15545	2	Screw - Handle
✓ 3	11625	1	Spider - Clutch
4	15415	1	Screw - Adjusting
✓ 5	25044	1	Nut - Bar Adjusting
6	24419	1	"E" Ring
7	15385	1	Screw - Bar Adjusting
8	24901	1	Guard
9	15439	1	Retaining Ring
10	15217	2	Nut - #10 - 24
11	25914	1	Shield - Heat
12	15406	2	Screw - #10 - 24 x 1/2
✓ 13	1543	2	Nut - #10 - 24
Decals			
A	26372	1	Decal - Warning
B	26341	1	Decal - Instruction (Heat Shield)
—	24768	1	Decal - Bar Clamp (Not Shown)

✓ = Part Change



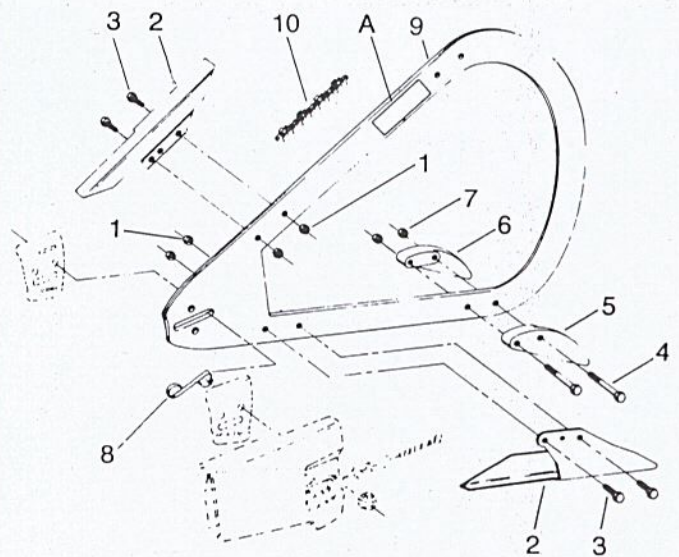
**⚠ WARNING:** The effectiveness of a chain brake in reducing operator injuries has not yet been fully determined. Therefore, Beard-Poulan cannot represent that a chain brake is an effective safety device to prevent or reduce the hazard of injuries resulting from kickback. DO NOT ASSUME THAT THE CHAIN BRAKE WILL PROTECT YOU IN THE EVENT OF A KICKBACK. Instead, use the saw properly and carefully to avoid kickback. Proper operation is outlined in the Operator's Manual. Repairs on a chain brake must be made by qualified service personnel. Take your unit to the place of purchase if purchased from a servicing dealer, or to the nearest Authorized Service Dealer, or nearest Skil Service Center.

### B. BOW GUIDE ASSEMBLY

- For professional use only. Do not use unless fully trained to do so.
- Do not use on units equipped with wraparound handlebar. (See page 3, Key No. 5.)

KEY NO.	PART NO.	QTY. REQ.	DESCRIPTION
1	1725	4	Locknut - (12 - 24)
2	22204	2	Chain Guard - Upper and Lower
3	1709	4	Screw - Guard Mtg. (12 - 24 x 5/8 - Hex Hd.)
4	625567	2	Screw - Spike Mtg. (1/4 - 20 x 1-3/4 - Hex Hd.)
5	1208	1	Bumper Spike - Right
6	1207	1	Bumper Spike - Left
7	1615	2	Locknut - Bumper Spike Mounting (1/4 - 20)
8	55044	1	"S" Clip
9	See Pg. 6	1	Bow Guide (See Bow and Chain Information)
10	See Pg. 6	1	Chain (See Bow and Chain Information)
✓ —	0488	1	13" Reversible Bow Attachment - .050/3/8 pitch use on Bow Guide Model
✓ —	0489	1	14" Reversible Bow Attachment - .050/3/8 pitch
Decal			
A	25384	1	Decal - Bow Guide Warning
✓ —	25383	1	Decal — Handguard (Not Shown)
✓ —	26156	1	Decal — Kickback (Not Shown)

✓ = Part Change





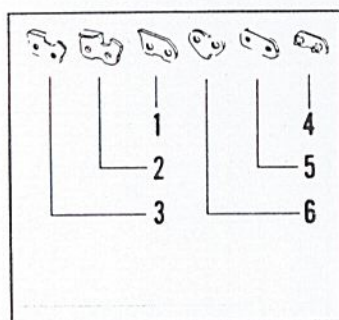
PARTS LIST NO. <b>64276 - 9/1/85</b>		<b>POULAN® PARTS LIST</b>	CHAIN SAW MODEL: 3700
PAGE 6 of 7	REPLACES 64276 - 9/1/84		

### A. Guide Bar and Chain Information

GUIDE BAR	GUIDE BAR NO.	REDUCED KICKBACK CHAIN		LOW-KICKBACK CHAIN	
		CHAIN NO.	DESCRIPTION & DRIVE LINKS	CHAIN NO.	DESCRIPTION & DRIVE LINKS
† 16" HT (Symmetrical)	44239	51106	P72-60	✓ 51264	P72S-60
† 20" HT (Symmetrical)	44241	51108	P72-70	✓ 51266	P72S-70
† 21" HT (Symmetrical)	✓ 44233	51095	P72-72	***	—
† 24" HT (Symmetrical)	44242	51183	P72-81	***	—
† 25" HT (Symmetrical)	✓ 44234	51091	P72-82	***	—
† 16" S.N.R. ** (Symmetrical)	✓ 44097	51106	P72-60	✓ 51264	P72S-60
† 16" S.N.R. ** (Symmetrical)	44259	51106	P72-60	✓ 51264	P72S-60
† 20" S.N.R. ** (Symmetrical)	44261	51108	P72-70	✓ 51266	P72S-70
† 24" S.N.R. ** (Silkscreen - Symmetrical)	✓ 44066	51183	P72-81	***	—
† 24" S.N.R. ** (Silkscreen - Symmetrical)	44262	51183	P72-81	***	—
† 27" S.N.R. ** (Silkscreen - Symmetrical)	✓ 44076	51182	P72-90	***	—
† 27" S.N.R. ** (Silkscreen - Symmetrical)	44263	51182	P72-90	***	—
† 30" S.N.R. ** (Silkscreen - Symmetrical)	44264	51184	P72-97	***	—
† 16" Control Tip® — S.N.R. **	44215	51106	P72-60	✓ 51264	P72S-60
† 20" Control Tip® — S.N.R. **	44217	51108	P72-70	✓ 51266	P72S-70
† 24" Control Tip® — S.N.R. **	44218	51183	P72-81	***	—

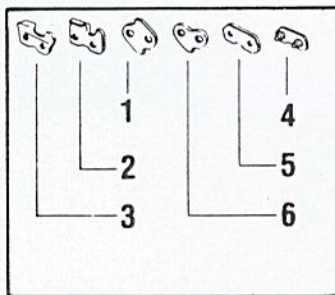
All Guide Bars require Part No. 55044 Bar Spacer ("S" Clip).  
 For repair of Symmetrical S.N.R. Guide Bars, use Part No. 55033 Assembly Kit.  
 For repair of Control Tip® S.N.R. Guide Bars, use Part No. 55059 Assembly Kit.  
 All chains listed above are 3/8 Pitch and .050 Gauge.

#### REPAIR PARTS FOR P72 CHAIN:



KEY NO.	PART NO.	DESCRIPTION
1	52047	Guard Drive Link
2	5294	L. H. Cutter
3	5293	R. H. Cutter
4	52014	Pre-Set Tie Strap
5	5295	Tie Strap
6	5297	Drive Link
✓ 7	5299	Repair Kit

#### REPAIR PARTS FOR P72S CHAIN:



KEY NO.	PART NO.	DESCRIPTION
1	52083	Guard Drive Link
2	52082	L. H. Cutter
3	52081	R. H. Cutter
4	52014	Pre-Set Tie Strap
5	5295	Tie Strap
6	5297	Drive Link
—	52078	Chain Repair Kit

### B. Bow Guide and Chain Information

BOW GUIDE	BOW GUIDE NO.	CHAIN NO.	DESCRIPTION & DRIVE LINKS
13" .050/ 3/8 pitch†	44235	51102	P72-80
14" .050/ 3/8 pitch†	44236	51134	P72-87

\*\* Replaceable Sprocket Nose  
 \*\*\*P72S Chain is available on reel and can be cut to length by your dealer.  
 † Optional  
 ✓ = Part Change  
 Ø Reduced-Kickback Guide Bar.



PARTS LIST NO. <b>64276 - 9/1/85</b>		<b>POULAN® PARTS LIST</b>	<b>CHAIN SAW MODEL: 3700</b>
PAGE <b>7 of 7</b>	REPLACES <b>64276 - 9/1/84</b>		

SERVICE REFERENCE

**1. O-Ring, Oil Cap, page 1**

Use O-Ring Part No. 19119 for 7/8" oil cap and Part No. 1949 for 3/4" oil cap. Measure outside diameter of oil cap threads to determine size of oil cap.

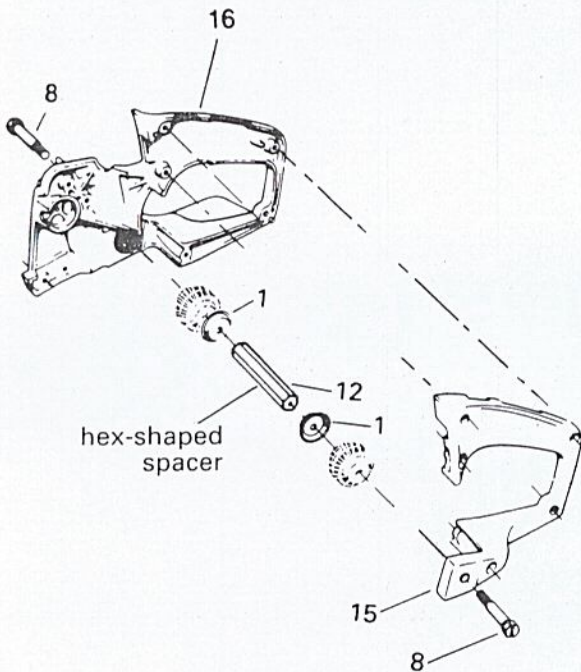
**2. Oil Pump Assembly, page 3**

For models prior to Serial #'s 36383403 (with 16" bar) and 36392344 (with 20" bar), use Kit #69062 instead of Part No. 10736.

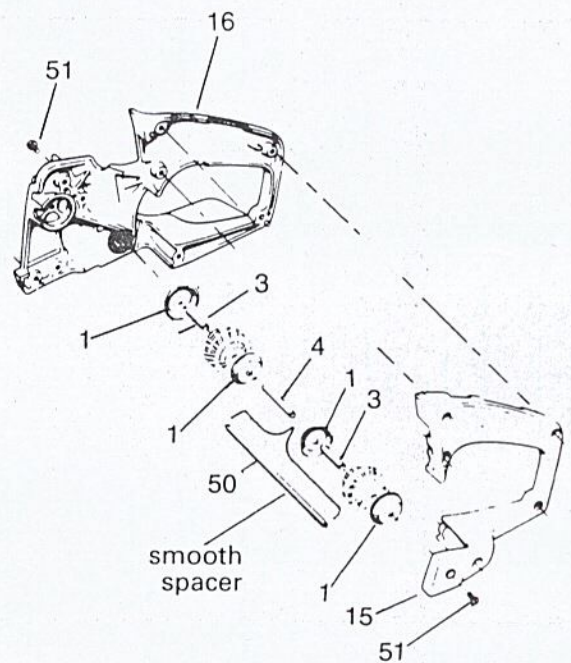
**3. Rear Handle Isolator System**

The right and left Rear Handles, other parts and in some cases quantities of parts, changed when the new style rear handle isolator system was implemented. The identifying feature of the new style system is a large hex-shaped center spacer, whereas the old style system utilized a smooth center spacer. New style and old style parts, as shown below, cannot be mixed. Determine which parts you require and order from below.

**New Style Isolator System  
(w/hex-shaped spacer)**



**Old Style Isolator System  
(w/smooth spacer)**



Key No.	Part No.	Qty.	Description
1	24376	2	Cup Isolator
3	—	—	—
4	—	—	—
8	15462	2	Shoulder Screw 1/4-20
12	26258	1	Spacer-Center
15	11826	1	Rear Handle - Left
16	11827	1	Rear Handle - Right
			See Service Ref. 4
50	—	—	—
51	—	—	—

Part No.	Qty.	Description
24376	4	Cup Isolator
15362	2	Spacer Isolator
15361	1	Spacer Isolator
—	—	—
11642	1	Rear Handle - Left
11643	1	Rear Handle - Right - See Service Ref. 4
24377	1	Pin-Rear Isolator
15192	2	Screw - 10-24 x 3/8 Pan Head

**4. Right Rear Handle and Handle Brace, page 2**

Screw openings in the Right Rear Handle and Handle Brace have been enlarged to accommodate a 1/4" screw instead of a #10 screw. New parts and old parts are interchangeable as a set but not individually. Determine which parts to order from the following:

**New Style (1/4" holes)**

Key No.	Part No.	Qty.	Description
16	12023	1	Rear Handle-Right
7	15194	2	Screw-1/4-20x3/4 Button Hd.
6	—	1	Handle Brace
	11965	—	Use on Guide Bar Powerhead
	11964	—	Use on Bow Guide Powerhead

**Old Style (#10 holes)**

Part No.	Qty.	Description
11827	1	Rear Handle-Right
15387	2	Screw - 10-24x3/16 Fil Hd.
—	1	Handle Brace
11646	—	Use on Guide Bar Powerhead
11645	—	Use on Bow Guide Powerhead