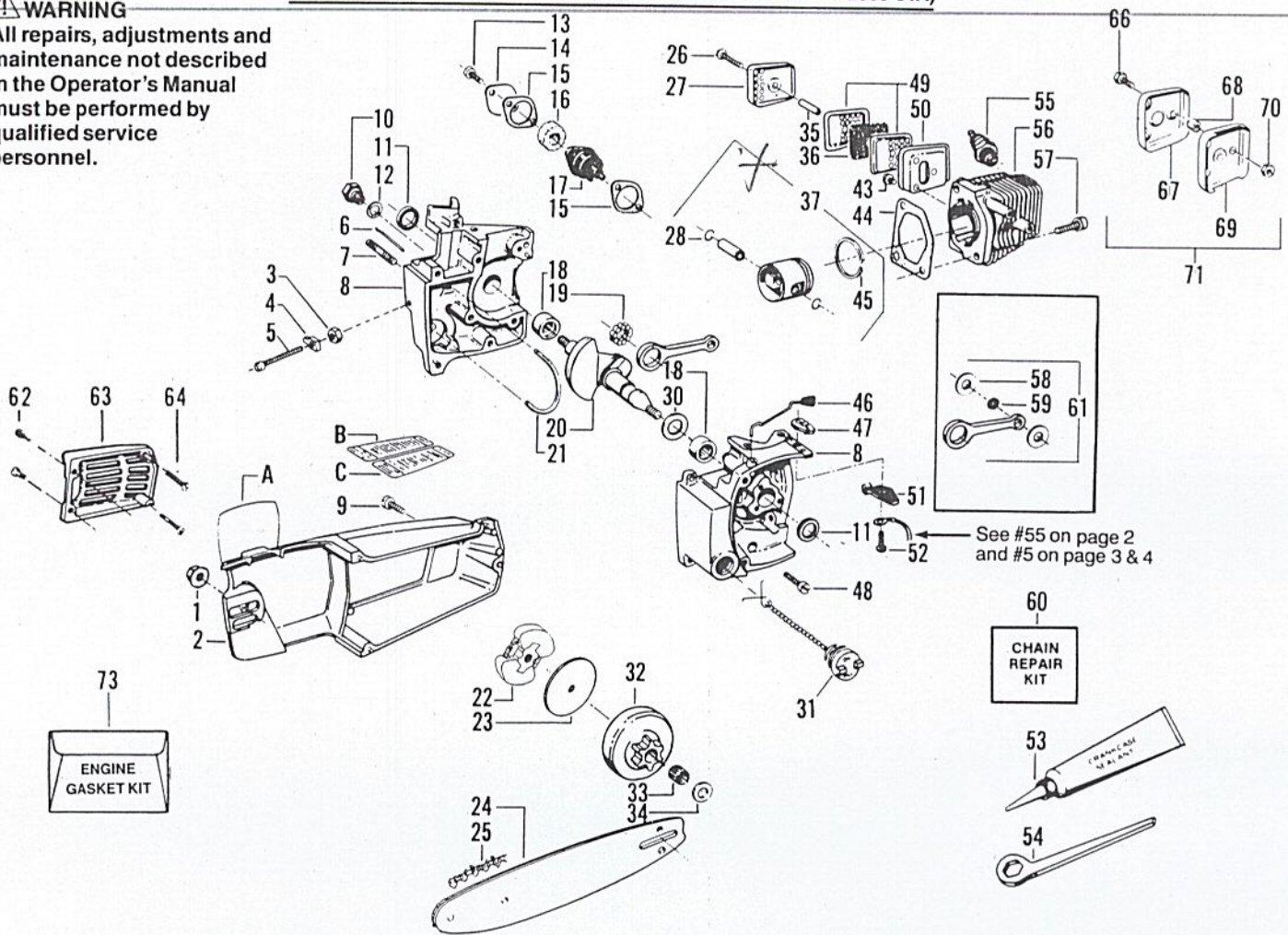


**POULAN® PARTS LIST**

**CHAIN SAWS  
MODELS: 2300 AV  
& 2300 CVA**

**2300 AV and 2300 CVA (TYPE I & II, ALSO EARLIER MODEL OF 2300 CVA)**

**⚠ WARNING**  
All repairs, adjustments and maintenance not described in the Operator's Manual must be performed by qualified service personnel.

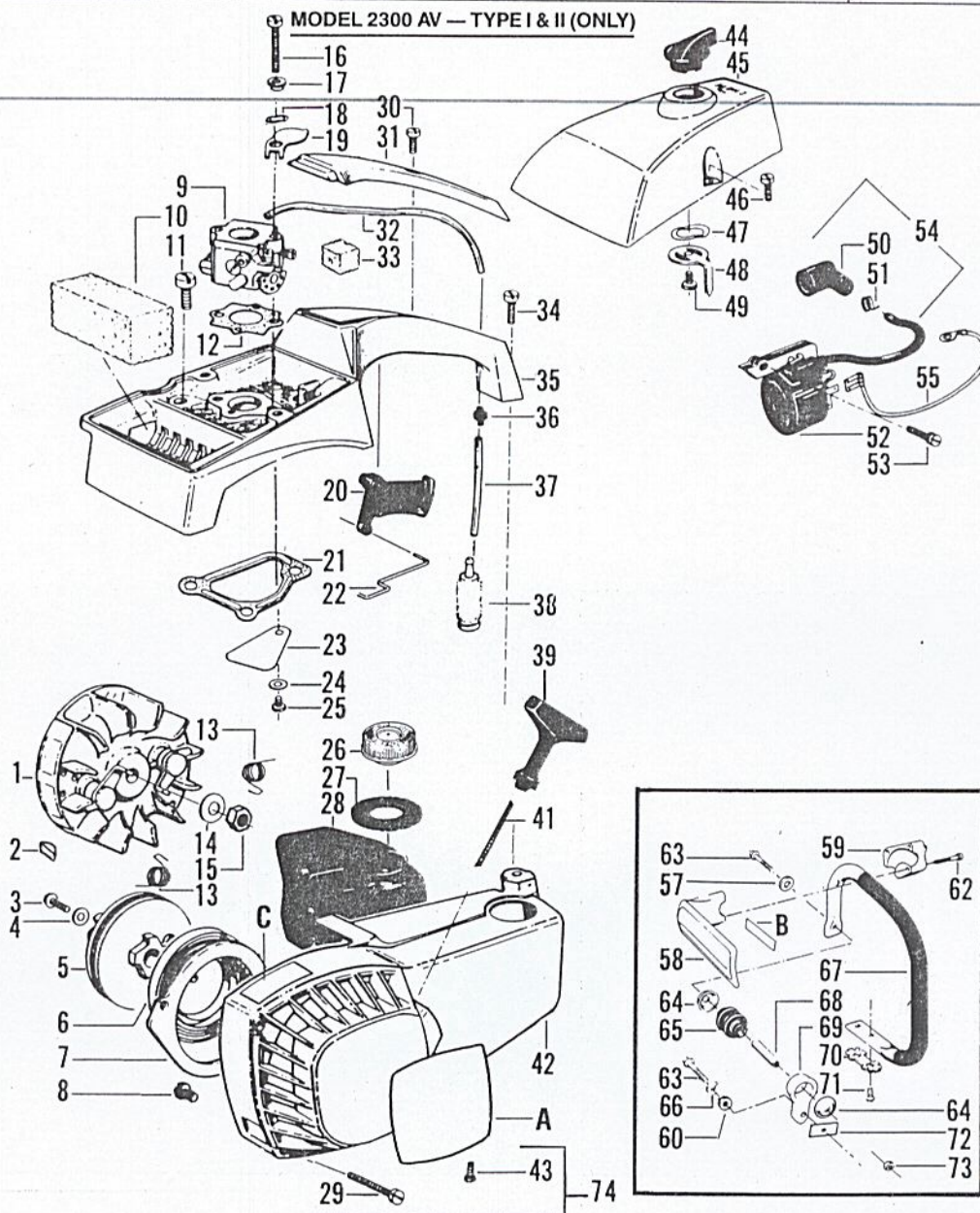


KEY NO.	PART NO.	QTY.	DESCRIPTION	KEY NO.	PART NO.	QTY.	DESCRIPTION	KEY NO.	PART NO.	QTY.	DESCRIPTION	KEY NO.	PART NO.	QTY.	DESCRIPTION
1	15251	1	Nut - Bar Mounting	25	—	1	Chain	46	—	1	Knob Ass'y. Switch	69	24202	1	Cover - Muffler - Type I & earlier
2	—	1	Bar Clamp	N	51208	—	12" (P101S-45) Chromed	47	23786	—	2300 AV (Type I & II) and 2300 CVA (earlier)	70	15332	1	Lock Nut - 8 - 32 - Type I & earlier
	11311	—	Type I and earlier	N	51211	—	16" (P101S-56) Chromed	48	15238	7	Ramp Switch	71	69034	1	Kit - Heat Shield - Type I & earlier only
	11834	—	Type II	26	15169	1	Screw #10 - 24 x 1 x 7/16	49	24236	—	2300 CVA (Type I & II)	73	69022	1	Kit - Engine Gasket (Contents Indicated by *) Optional
3	15135	1	Lock Nut #8 - 32	27	23795	1	Cover - Muffler	51	23797	2	Baffle - Muffler				
4	23492	1	Pin - Bar Adjust	28	23843	2	Retainer - Piston Pin	52	23794	1	Body - Muffler				
5	15236	1	Screw Bar Adjust	30	23887	1	Thrust Washer - Crankshaft	53	30054	1	Sealant - Crankcase (Optional)				
6	23792	1	Pin - Oil Tank Vent	31	10221	1	Oil Cap Ass'y. (Incl. O-Ring)	54	31063	1	Bar Adjusting Tool				
7	15642	1	Stud - Bar Mounting	32	—	1	Clutch Drum	55	30005	1	Spark Plug C/J-8				
8	10469	1	Crankcase Assembly (Incl. #3-7, 10, 11 & 18)	32	48032	—	Prior to Date Code/Serial #A3350001	56	12065	1	Cylinder				
9	15623	1	Screw #10 - 24 x 1 Soc. Hd. - See Service Ref. 4.	32	—	1	Date Code/Serial #A3350001 and after (Clutch Drum & Bearing Kit)	57	15239	2	Screw - 1/4 - 20 x 3/4 Socket				
10	69142	1	Check Valve Kit - Oil Tank Pressure (Incl. 12)	33	32079	1	Bearing - Clutch (Use only with Clutch Drum & Bearing Kit)	58	15486	2	Washer - Rod (Top)				
11	19059	2	*Seal - Crankshaft	34	23519	1	Spacer - Clutch (Inside)	59	32075	1	Bearing Rod (Top - Incl. 22 bearings)				
12	19089	1	*Gasket - Check Valve	35	23535	1	Spacer - Muffler Cover	60	52073	1	Chain Repair Kit				
13	15176	2	Screw - #8 - 32 x 1/2	35	23535	1	Spacer - Muffler Cover	61	10474	1	Connecting Rod Ass'y. Kit (Incl. 58 & 59)				
14	23802	1	Cover - Metering Body	36	23796	1	Screen - Spark Arrestor	62	15474	2	Screw - Muffler Shield - Front - #10 - 24 x 1/2 - Type II				
15	19091	2	*Gasket - Metering Body	37	10588	1	Piston Kit - (Incl. 28, 45 & Pin)	63	25259	1	Muffler Shield - Type II				
16	23801	1	*Filter - Oil	43	1666	2	Screw - #10 - 24 x 1/2	64	15463	2	Screw - Muffler Shield - Rear - #10 - 14 x 9/16 - Type II				
17	10195	1	Ass'y. - Metering Body	44	19139	1	*Gasket - Cylinder	66	15333	3	Screw - Hex - 8 - 24 x 7/16 - Type I and earlier				
18	32058	2	Bearing - Crankshaft	45	—	1	Piston Ring	67	24201	1	Shield - Heat - Type I & earlier				
19	32065	1	Bearing - Roller (Incl. 12 bearings)	25467	—	—	Before Date Code/Serial #A1820001	68	15331	3	Spacer - Cover - Type I & earlier				
20	22172	1	Crankshaft - Solid State	25876	—	—	Date Code/Serial #A1820001 and after								
21	21026	1	Line - Oil Discharge												
22	*****	1	Clutch Ass'y. Kit (Incl. washer) - See Service Ref. 3.												
23	69197	1	Clutch Washer Kit (Outside)												
24	—	1	Guide Bar												
N	44165	—	12"												
N	44167	—	16"												

✓ = Part Change  
\*\*\*\*\* = Service Reference  
N = New Part No.

\* Indicates Gasket Kit Contents, Key No. 73, this page.

## POULAN® PARTS LIST

CHAIN SAWS  
MODELS: 2300 AV  
& 2300 CVA

KEY NO.	PART NO.	QTY.	DESCRIPTION	KEY NO.	PART NO.	QTY.	DESCRIPTION	KEY NO.	PART NO.	QTY.	DESCRIPTION	KEY NO.	PART NO.	QTY.	DESCRIPTION
1	39111	1	Flywheel Assembly (Incl. #13)	24	23367	1	Washer - Reed Valve	44	23807	1	Choke Knob	65	25566	1	Isolator
2	15126	1	Key - Flywheel	25	15241	1	Screw - #6 x 5/16 Tapping	45	24965	1	Cover Carburetor	66	1642	1	Lockwasher - Isolator Bracket
3	15036	1	Screw - #10 - 24 x 1/2	26	10729	1	Fuel Cap Ass'y. (Incl. O-Ring)	46	15168	2	Screw - #10 - 24 x 5/8	67	22245	1	Handlebar
4	15428	1	Washer - Starter Pulley	27	19093	1	*Seal - Fuel Tank Neck	47	15147	1	Wave Washer	68	25565	1	Spacer
5	69200	1	Kit - Pulley Replacement (Incl. #4, 39 & 41)	28	10775	1	Fuel Tank Ass'y. (Incl. #26, 27, 37 & 38)	48	23806	1	Lever - Choke	69	26659	1	Bracket Isolator
6	42023	1	Spring - Starter	29	15649	1	Screw - #10 - 24 x 1-3/8 Socket Head	49	15407	1	Tapping	70	25569	1	Retainer - Screw
7	25487	1	Baffle - Air Intake	30	15247	1	Screw - #8 x 3/4 Tapping	50	3934	1	Boot - Spark Plug	71	15507	2	Screw - #10 - 24 x 5/8 Hex Head
8	1726	2	Screw - 8 - 32 x 5/6 Baffle Mounting	31	24967	1	Cover Handle	51	3933	1	Connector - Spark Plug	72	25568	1	Pad - Cork
9	35181	1	Carburetor - See page 5.	32	21025	1	Fuel - Line Carburetor	52	69202	1	Module Ignition (Incl. #54 & 55)	73	1615	1	Lock Nut - 1/4 - #20
10	23791	1	Filter - Air	33	23373	1	*Boot - Throttle Wire	53	15128	2	Screw - 8 - 32 x 3/4 Sems	74	69199	1	Kit - Fan Housing Screws (Incl. #29 & 43 this page and #9 on page 1) See Service Ref. 4
11	15242	3	Screw - 1/2 - 20 x 11/16	34	15141	1	Screw 1/4 - 20 x 3/4	54	39082	1	Lead - Spark Plug (Incl. #50 & 51)				
12	19045	1	*Gasket - Carburetor	35	25233	1	Handle & Carburetor Hsg.	55	39116	1	Lead - Switch				
13	23817	2	Spring - Starter Dog	36	23877	1	Fitting - Fuel Line	57	15151	1	Washer - Handlebar Top	A	26838	1	Decal - Fan Housing
14	15127	1	Washer - Flywheel	N37	69216	1	Line Kit	58	24091	1	Handguard	B	26849	1	Decal - Handguard
15	626605	1	Nut - 5/16 - 24	38	91878	1	Fuel Pick-up Ass'y. See Service Ref. 5	59	24049	1	Cap - Handguard	C	26858	1	Decal - Replacement Bar & Chain
16	15245	2	Screw - #10 - 24 x 1-5/8	39	26735	1	Handle Starter	60	15209	1	Washer - Isolator - Bracket				
17	23865	1	Spacer - Choke Shutter	N41	69232	1	Rope Kit	62	15509	3	Screw - #10 x 1 Phil. Pan Hd.				
18	15254	1	Wave Washer	42	11896	1	Fan Housing	63	15505	2	Bolt - 1/4 - #20 x 1-11/32 (Handlebar & Isolator)				
19	23805	1	Shutter - Choke	43	15650	1	Screw - #10 - 24 x 5/8 - Socket Head Sems See Service Ref. 4	64	25567	2	Cup - Isolator See Service Ref. 1				
20	24803	1	Trigger - Throttle												
21	19118	1	*Gasket - Carburetor Housing												
22	25685	1	Wire - Throttle												
23	23366	1	Reed Valve												

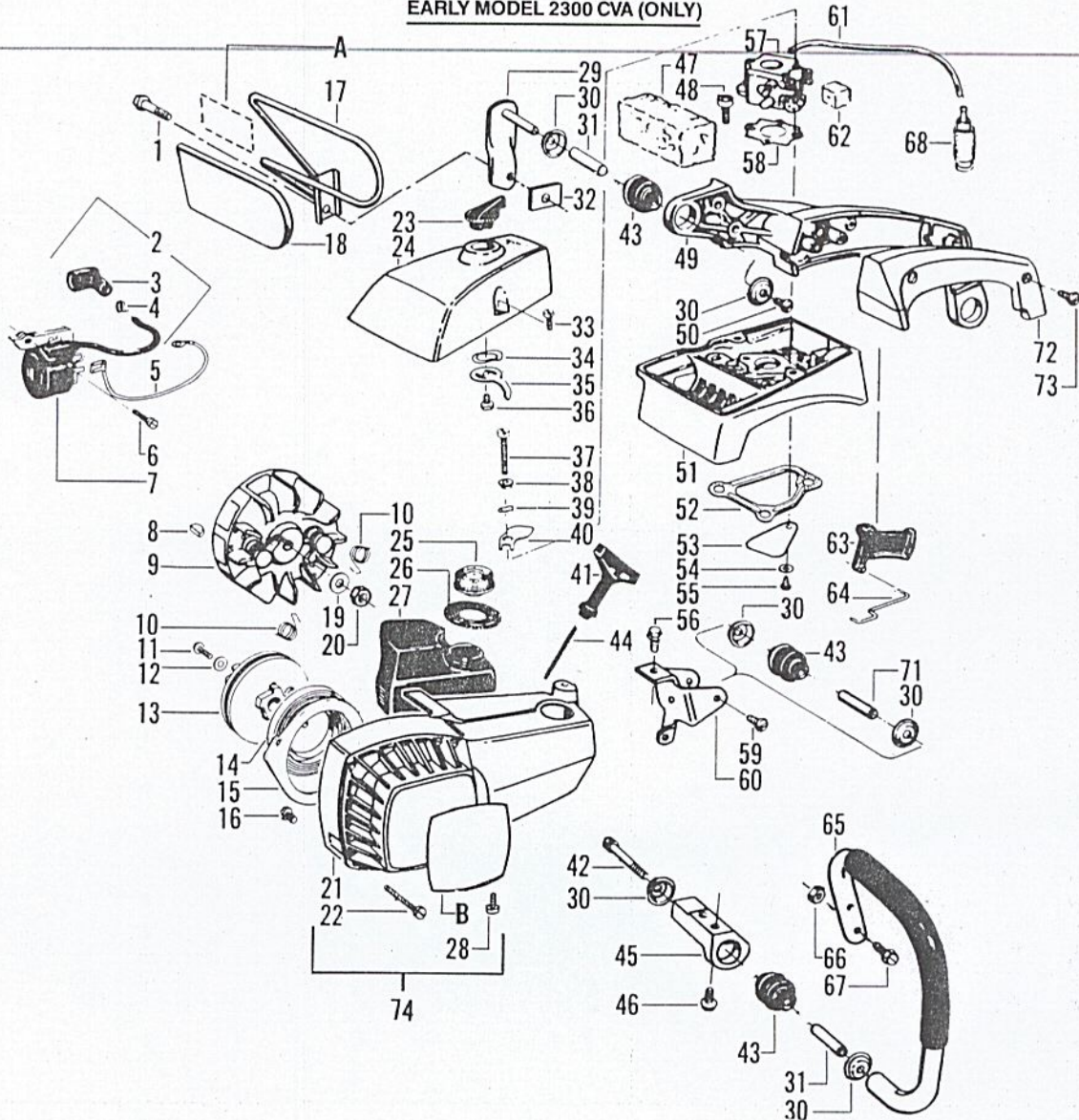
✓ = Part Change

\*\*\*\*\* = Service Reference

N = New Part No.

\* Indicates Gasket Kit Contents, Key No. 73, page 1.

EARLY MODEL 2300 CVA (ONLY)



KEY NO.	PART NO.	QTY.	DESCRIPTION	KEY NO.	PART NO.	QTY.	DESCRIPTION	KEY NO.	PART NO.	QTY.	DESCRIPTION	KEY NO.	PART NO.	QTY.	DESCRIPTION
1	1648	1	Screw - 1/4 - 20 x 1-1/4 Hex Hd	23	23807	1	Choke Knob	42	15338	1	Screw - #20 - 1/4 x 1-3/4 Hex Socket Head	59	15129	2	Screw - #8 - 32 x 7/16 Pan Head
2	39082	1	Lead Spark Plug (Incl. #3 & 4)	24	24965	1	Cover - Carburetor	43	24256	3	Isolator	60	11753	1	Bracket - Isolator Mtg. Fuel Line (Bulk No. 8133)
3	3934	1	Boot - Spark Plug	25	10729	1	Fuel - Cap Ass'y (Incl. O-Ring)	44	22289	1	Rope (3 ft.)	61	21035	1	*Boot - Throttle Wire (Incl. #22 & 28 this page and #9 on page 2)
4	3933	1	Connector - Spark Plug	26	19093	1	*Seal - Fuel Tank Neck	45	11612	1	Bracket - Isolator Mtg.	62	23373	1	Trigger Throttle
5	39116	1	Lead - Switch	27	10775	1	Fuel Tank Ass'y (Incl. #25, 26, 61 & 68)	46	15037	2	Screw - #10 - 24 x 5/8	63	25683	1	Wire Throttle
6	15128	2	Screw #8 - 32 x 3/4 Sems	28	15650	1	Screw - #10 - 24 x 5/8 - Socket Head Sems - See Service Ref. 4	47	23791	1	Air Filter	64	25685	1	Handlebar Ass'y.
7	69202	1	Module - Ignition (Incl. #2 & 5)	29	11615	1	Front Bracket & Spindle Ass'y.	48	15242	3	Screw - 1/4 - 20 x 11/16	65	22186	1	Lock Nut - Handlebar #10 - 32 Hex
8	15126	1	Key - Flywheel	30	26163	6	Cup - Isolator	49	11685	1	Rear Handle	66	1720	2	Screw - #10 - 32 x 1-1/4 Socket Head Cap
9	39111	1	Flywheel Assembly (Incl. #10)	31	15342	2	Spacer	50	15129	1	Screw - #8 - 32 x 7/16 Pan Head	67	15392	2	Fuel Pick-up Ass'y.
10	23817	2	Spring - Starter Dog	32	24317	1	Pad - Isolator	51	25978	1	Carburetor Housing	71	15343	1	Spacer
11	15036	1	Screw - #10 x 24 x 1/2	33	15168	2	Screw - #10 - 24 x 5/8	52	19118	1	*Gasket - Carburetor Housing	72	11682	1	Cover - Rear Handle
12	15428	1	Washer	34	15147	1	Wave Washer	53	23366	1	Reed Valve	73	15411	2	Screw - #8 - 32 x 9/16
13	69200	1	Pulley Starter (Incl. #12)	35	23806	1	Lever - Choke	54	23367	1	Washer - Reed Valve	74	69199	1	Kit - Fan Hsg. Screws - (Incl. #22 & 28 this page and #9 on page 2) See Service Ref. 4
14	42023	1	Spring - Starter	36	15407	1	Screw - #8 - 16 x 3/8 Tapping	55	15241	1	Screw - #6 x 5/16 Tapping				
15	25487	1	Baffle - Air Intake	37	15245	2	Screw - #10 - 24 x 1-5/8	56	15426	1	Bolt - #20 - 1/4 x 1/2 Hex Head				
16	1726	2	Screw - Baffle	38	23865	1	Spacer - Choke Shutter	57	35181	1	Carburetor - See page 5.				
17	24581	1	Handguard	39	15254	1	Wave Washer	58	19045	1	*Gasket - Carburetor				
18	24562	1	Sleeve - Handguard	40	23805	1	Shutter - Choke								
19	15127	1	Washer - Flywheel	41	26735	1	Handle Starter								
20	626605	1	Nut - 5/16 - 24												
21	11896	1	Fan Housing												
22	15649	2	Screw - #10 - 24 x 1-3/8 Socket Head												
			See Service Ref. 4												

↗ = Part Change  
\*\*\*\*\* = Service Reference  
N = New Part No.

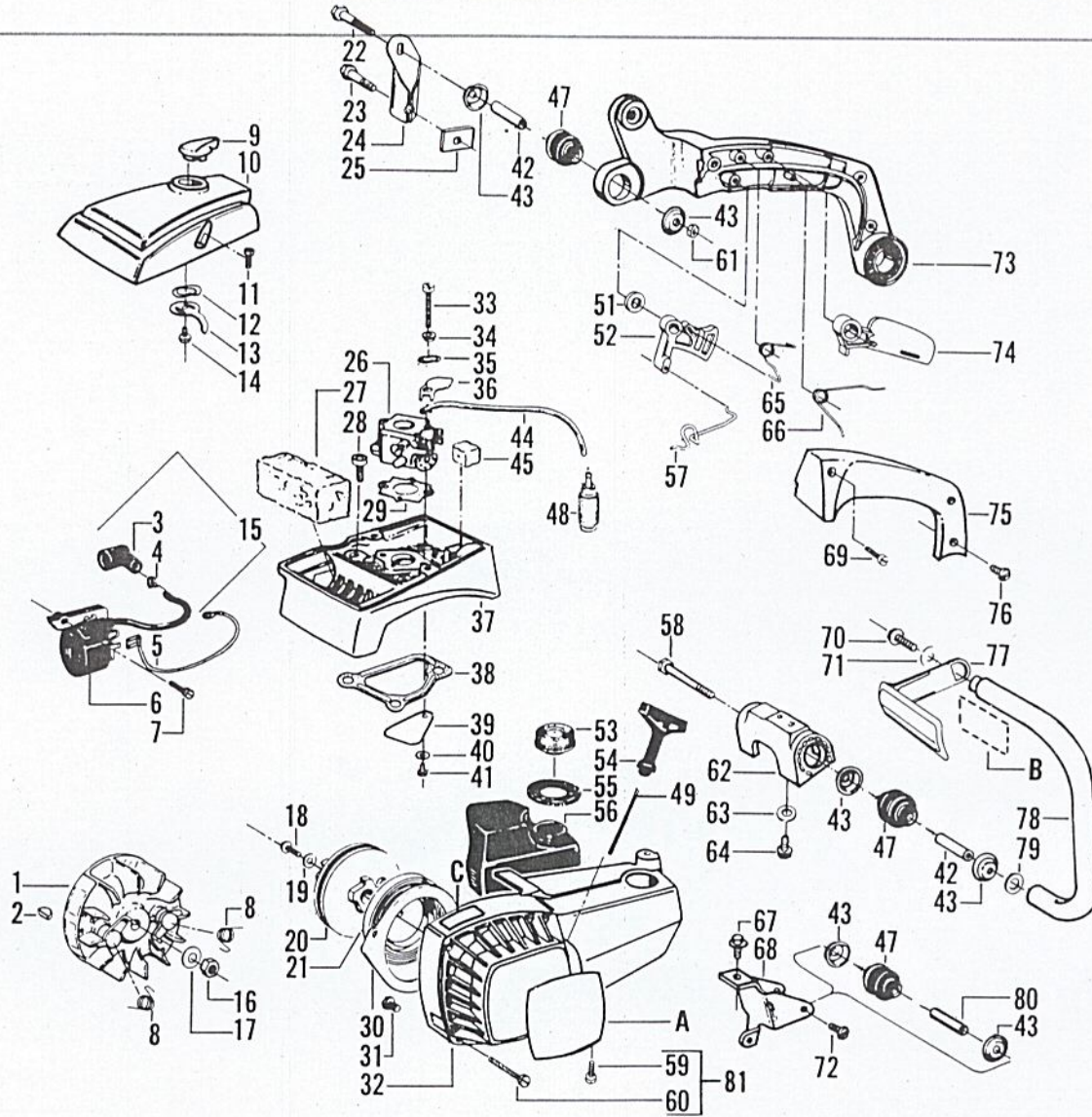
\* Indicates Gasket Kit Contents, Key No. 73, page 1.

DECALS  
A 25631 1 Decal - Kickback Warning  
B 25604 1 Decal - Fan Housing

**POULAN® PARTS LIST**

**CHAIN SAWS  
 MODELS: 2300 AV  
 & 2300 CVA**

**MODEL 2300 CVA TYPE I & II (ONLY)**



KEY NO.	PART NO.	QTY.	DESCRIPTION	KEY NO.	PART NO.	QTY.	DESCRIPTION	KEY NO.	PART NO.	QTY.	DESCRIPTION	KEY NO.	PART NO.	QTY.	DESCRIPTION
1	39111	1	Flywheel Assembly (Incl. #8)	24	25679	1	Bracket - Upper Isolator	52	25683	1	Trigger - Throttle	69	15533	1	Screw - Rear Handle Front (#10 - 16 x 1-1/8)
2	15126	1	Key - Flywheel	25	24317	1	Pad - Isolator	53	10729	1	Fuel Cap Ass'y (Incl. O-Ring)	70	15499	1	Screw - Handlebar Mtg. - Top (#1/4 - 10 x 1-3/4)
3	3934	1	Boot - Spark Plug	26	35181	1	Carburetor - See Page 5	54	26735	1	Handle Starter	71	92062	1	Washer Handlebar
4	3933	1	Connector - Spark Plug	27	23791	1	Air Filter	55	19093	1	*Seal - Fuel Tank Neck	72	15129	2	Screw - #8 - 32 x 7/16
5	39116	1	Lead Switch	28	19045	1	*Gasket - Carburetor	56	10775	1	Fuel Tank Ass'y (Incl. #44, 48, 53 & 55)	73	25682	1	Rear Handle - Right
6	69202	1	Module - Ignition (Incl. #5 & 15)	30	25487	1	Baffle - Air Intake	57	25685	1	Wire - Throttle	74	25684	1	Lever - Throttle Lockout
7	15128	2	Screw - #8 - 32 x 3/4 Sems	31	1726	2	Screw - Baffle	58	15551	1	Screw - Isolator (#1-1/4 - 20 x 2 - 3/16)	75	25681	1	Rear Handle - Left
8	23817	2	Spring - Starter Dog	32	11896	1	Fan Housing	59	15650	1	Screw - #10 - 24 - 5/8 Socket Head Sems	76	15495	2	Screw - Rear Handle (#10 - 16 x 3/4)
9	25691	1	Knob Choke	33	15245	2	Screw - #10 - 24 x 1-5/8	59	15650	1	Screw - #10 - 24 - 5/8 Socket Head Sems	77	25451	1	Handguard
10	25676	1	Cover - Carburetor	34	23865	1	Spacer - Choke	60	15649	2	Screw - #10 - 24 x 1-3/8 Socket Head	78	25675	1	Handlebar w/Insert Lower (1/4)
11	15168	2	Screw - #10 - 24 x 5/8	35	15254	1	Wave Washer	61	1615	1	Locknut - Handlebar Mtg. (#1/4 - 20)	79	15531	1	Washer - Handlebar
12	15147	1	Wave Washer	36	23805	1	Shutter - Choke	62	25689	1	Bracket - Lower Isolator	80	15343	1	Spacer
13	23806	1	Lever - Choke	37	25978	1	Housing - Carburetor	63	15123	2	Washer - Lower Bracket Mtg. (#10)	81	69199	1	Kit - Fan Hsg. Screws (Incl. #59 & 60, this page & #9 on page 1) - See Service Ref. 4
14	15407	1	Screw - #8 - 16 x 3/8 Tapping	38	19118	1	*Gasket - Carburetor Housing	64	15557	2	Screw - Bracket Mounting (10 - 24 x 5/8)	DECALS			
15	39082	1	Lead Spark Plug	39	23366	1	Reed Valve	64	15557	2	Screw - Bracket Mounting (10 - 24 x 5/8)				NA
16	626605	1	Nut - 5/16 - 24	40	23367	1	Washer - Reed Valve	65	25686	1	Spring Trigger	NB	26849	1	Decal - Handguard
17	15127	1	Washer - Flywheel	41	15241	1	Screw - #6 x 5/16 Tapping	66	25687	1	Spring - Throttle Locknut Lever	C	26858	1	Decal - Replacement Bar & Chain
18	15036	1	Screw - #10 x 24 x 1/2	42	15242	2	Spacer	67	15426	1	Bolt - 1/4 - #20 x 1/2				
19	15428	1	Washer	43	26163	6	Cup - Isolator	68	25677	1	Bracket - Rear Isolator				
20	69200	1	Kit Pulley Replacement (Incl. #19, 49 & 54)	44	21035	1	Fuel Line (Bulk no. B133)								
21	42023	1	Spring - Starter	45	23373	1	*Boot - Throttle Wire								
22	15524	1	Screw - Isolator (#14 - 20 x 1-11/16)	47	24256	3	Isolator								
23	1648	1	Screw - 14 - 20 x 1-1/4 Hex Head	48	91878	1	Fuel Pick-up Ass'y. See Service Ref. 5								
				N49	69232	1	Rope Kit								
				51	15528	1	Washer - Trigger (nylon)								

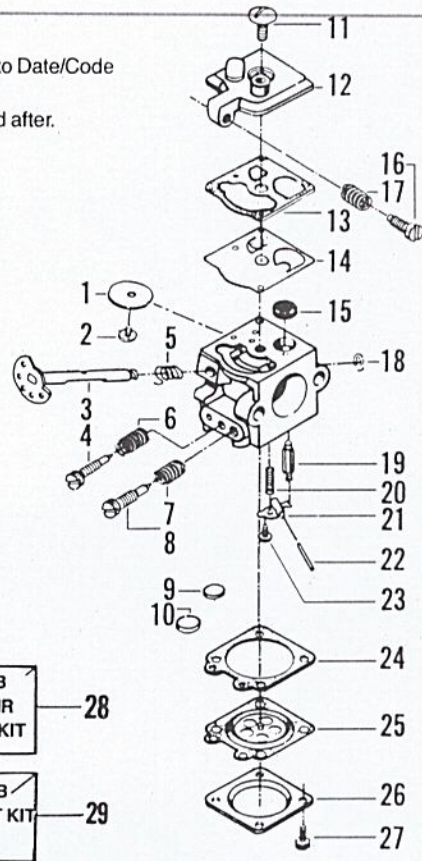
✓ = Part Change  
 \*\*\*\*\* = Service Reference  
 N = New Part No.

## A. Carburetor Assembly

- Carburetor WT-3 (#35158 - no longer available) was used on models prior to Date/Code Serial #A335001. Replace with #35181. Order individual parts from below.
- Carburetor WT-20 (#35181) was used on models Date/Serial #A335001 and after.

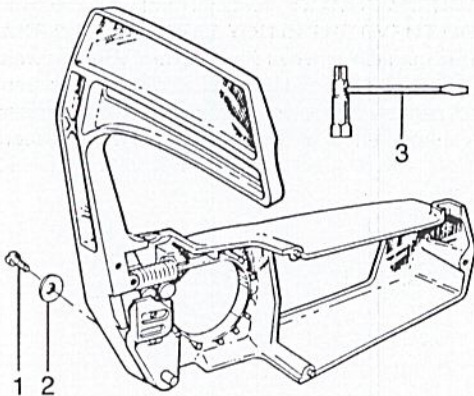
KEY NO.	PART NO.	DESCRIPTION
1	35006	Valve Throttle
2	35015	Screw-Throttle Valve
3	35034	Shaft Assembly-Throttle
4	35171	Needle-Low Speed Mixture
5	35024	Spring-Throttle Return
6	35023	Spring-Low Speed Mixture Needle
7	35167	Spring-High Speed Mixture Needle
8	35169	Needle-High Speed Mixture
9	35162	*Plug-5/16 Dia. Welch
10	35163	*Plug-1/4 Dia. Welch
11	35017	Screw-Pump Cover
12	35159	Cover-Fuel Pump
13	35164	+ Gasket-Fuel Pump
14	35166	+ Diaphragm-Fuel Pump
15	—	*Screen-Fuel Inlet
	35172	WT-3 (#35158)
	35027	WT-20 (#35181)
16	35035	Screw-Idle Speed Adjusting
17	35168	Spring-Idle Speed Adjusting Screw
18	35007	Ring-Throttle Retainer
19	35008	*Valve-Inlet Needle
20	35188	*Spring-Metering Lever
21	35031	*Lever-Metering
22	35028	*Pin-Metering Lever
23	35016	*Screw-Metering Lever Pin
24	35165	+ Gasket-Metering Diaphragm
25	35014	+ Diaphragm-Metering
26	35003	Cover-Metering Diaphragm
27	35021	Screw Assembly-Metering Cover
28	35161	Kit - Carb. Repair (Includes parts marked *)
29	35173	Kit - Carb. Gasket/Diaphragm (Includes parts marked †)

✓ = Part Change  
N = New Part No.



## B. Chain Brake Assembly #69201

**⚠ WARNING:** The effectiveness of a chain brake in reducing operator injuries has not yet been fully determined. Therefore, Beard-Poulan cannot represent that a chain brake is an effective safety device to prevent or reduce the hazard of injuries resulting from kickback. **DO NOT ASSUME THAT THE CHAIN BRAKE WILL PROTECT YOU IN THE EVENT OF A KICKBACK.** Instead, use the saw properly and carefully to avoid kickback. Proper operation is outlined in the Operator's Manual. Repairs on a chain brake must be made by qualified service personnel. Take your unit to the place of purchase if purchased from a servicing dealer, or to the nearest Authorized Master Service Dealer, or nearest Skil Service Center.



KEY NO.	PART NO.	QTY.	DESCRIPTION
1	15321	1	Screw
2	15123	1	Washer
3	31094	1	Srench
—	15445	1	Nut - Bar Mounting (Not Shown)
—	✓ 26919	1	Decal - Bar Clamp (Not Shown)

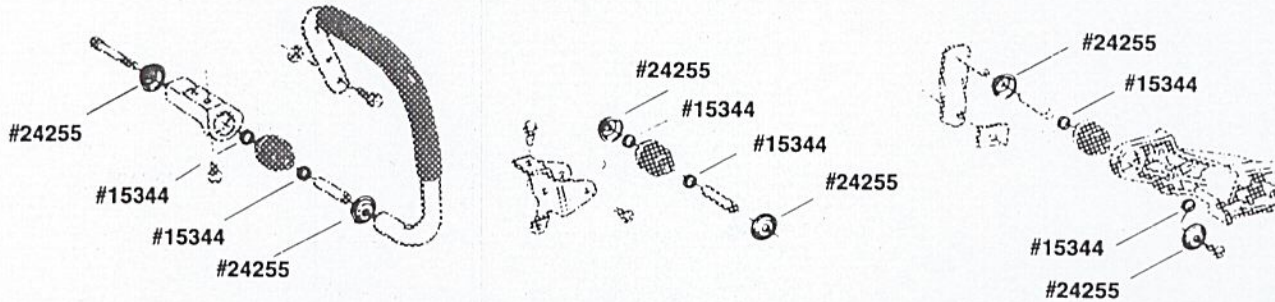
PARTS LIST NO. <b>64828 - 9/1/86</b>		<b>POULAN® PARTS LIST</b>	<b>CHAIN SAWS MODELS: 2300 AV &amp; 2300 CVA</b>
PAGE <b>6 of 7</b>	REPLACES <b>64828 - 12/1/85</b>		

SERVICE REFERENCES

**1. Isolator Cup — page 4.**

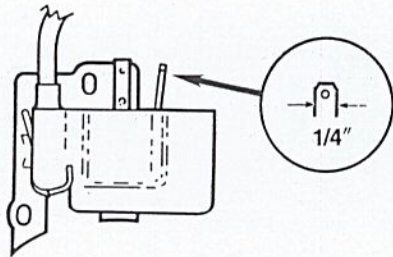
The new isolator cup, Part No. 26163, is constructed to be used without the isolator ring as shown on page 4 (Key No. 43).

The old isolator cup, Part No. 24555, requires isolator ring, Part No. 15344, as shown below:

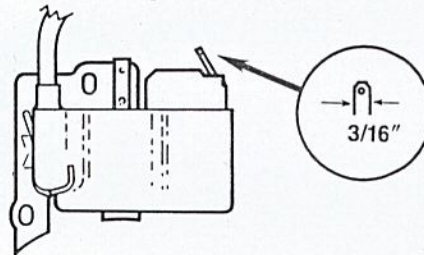


**2. Lead-Switch — page 2, 3 and 4.**

Determine whether the ignition module requires a lead with a 3/16" or a 1/4" flag terminal by measuring the width of the tab on the module. For a lead with a 1/4" flag terminal, order Part No. 24158. For a lead with a 3/16" flag terminal, order Part No. 39116.



Order Lead #24158



Order Lead #39116

**3. Kit - Clutch Assembly (Part No. 69193) — page 1.**

Clutch Tool, Part No. 31112 must be used to remove the new style clutch (Clutch Assembly Kit, Part No. 69193) to avoid damage to the clutch. Do not use a punch or hammer or strike the clutch with any instrument. Clutch Tool, Part No. 31085 should be used to remove the earlier style clutch.



USE  
CLUTCH TOOL  
#31112

CURRENT STYLE CLUTCH  
#69193



USE  
CLUTCH TOOL  
#31085

EARLIER STYLE CLUTCH

PARTS LIST NO. <b>64828 - 9/1/86</b>		<b>POULAN® PARTS LIST</b>	<b>CHAIN SAWS MODELS: 2300 AV &amp; 2300 CVA</b>
PAGE <b>7 of 7</b>	REPLACES <b>64828 - 12/1/85</b>		

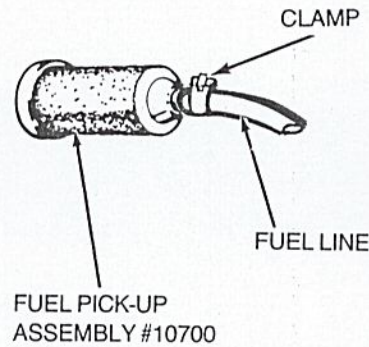
SERVICE REFERENCES

**4. Kit - Fan Housing Screws — page 1, 2, 3 & 4.**

When replacing one of the old style slotted head fan housing screws, it is recommended that all fan housing screws be replaced with the allen head screws in the Fan Housing Screw Kit, Part No. 69199. Some units may not accept Screw, Part No. 15650. Discard this screw if not needed.

**5. Fuel Pick-up Assembly — page 2, 3 & 4.**

A large number of units were built with Fuel Pick-Up Assembly, Part No. 10700 plus a small clamp. The clamp is not servicable. If the clamp requires replacement, use Tie Strap, Part No. 24675. Install fuel line on pick-up assembly, then install tie strap until tight. When servicing a unit with Fuel Pick-up Assembly, Part No. 91878, the clamp is not required.



Order the Poulan® Brand Service Manual (Part #6600) and the Weed Eater® Brand Service Manual (Part #64687) for the latest service information. Both contain information for servicing individual products including Service Procedure Manuals, Service Bulletins, Master Parts Price Lists, and a complete file of Illustrated Parts Lists.