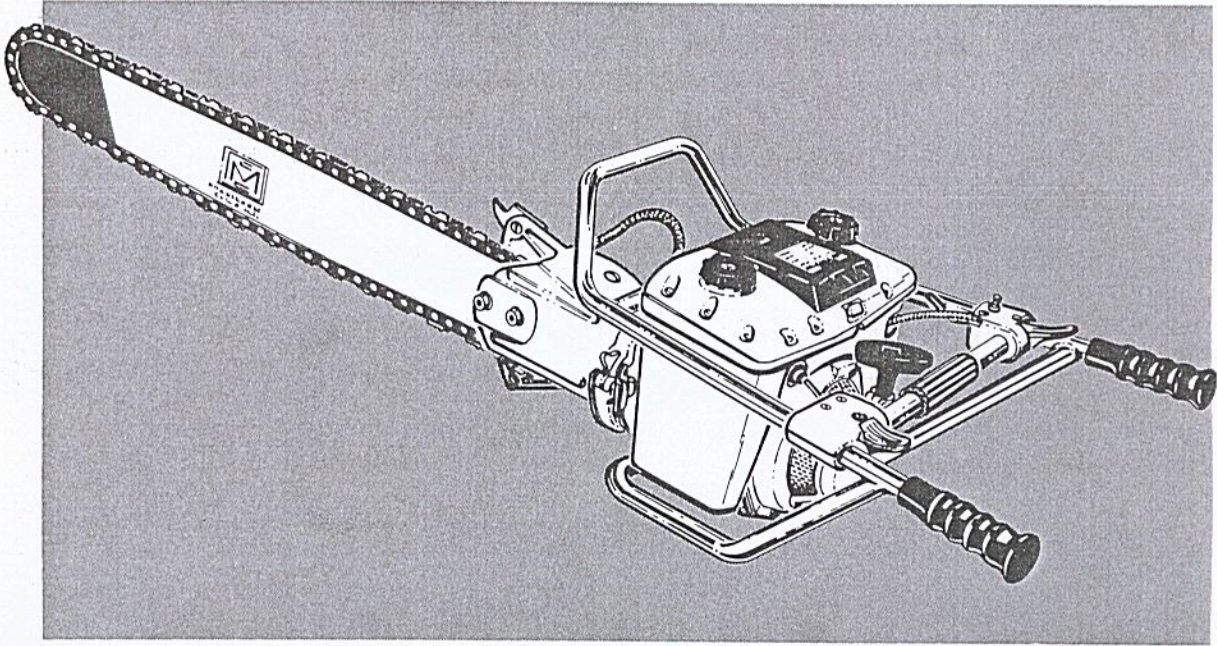


# MODEL 940 CHAIN SAW

MODEL NO. 600140 - SERIAL NO'S. PREFIXED 11-, 12-

## ILLUSTRATED PARTS LIST



This illustrated parts list supersedes and cancels I.P.L. P/N 69865 .....

May 1971

The policy of McCulloch Corporation is one of continual improvement in design, manufacturing and engineering advancement wherever possible to assure still finer two-cycle power tools. Hence, specifications, equipment, colors, design and manufacturer's suggested list prices are subject to change without notice and McCulloch Corporation reserves the right to make such changes without prior notification or obligation to backfit or supply backfit components for units previously shipped from the factory.

	Page
Figure 1. Model 940 Chain Saw .....	2
Figure 2. Transmission & Sprocket Drive ..	4
Figure 3. Frame and Control Assembly ....	6
Figure 4. Outboard Handle (Accessory) ....	7
Figure 5. Fuel and Tank Assembly .....	8
Figure 6. Powerhead Assembly .....	10
Figure 7. Clamp, Clutch and Muffler .....	12
Figure 8. Carburetor and Adapter .....	14
Figure 9. Carburetor and Adapter .....	15



# McCULLOCH

# MODEL 940

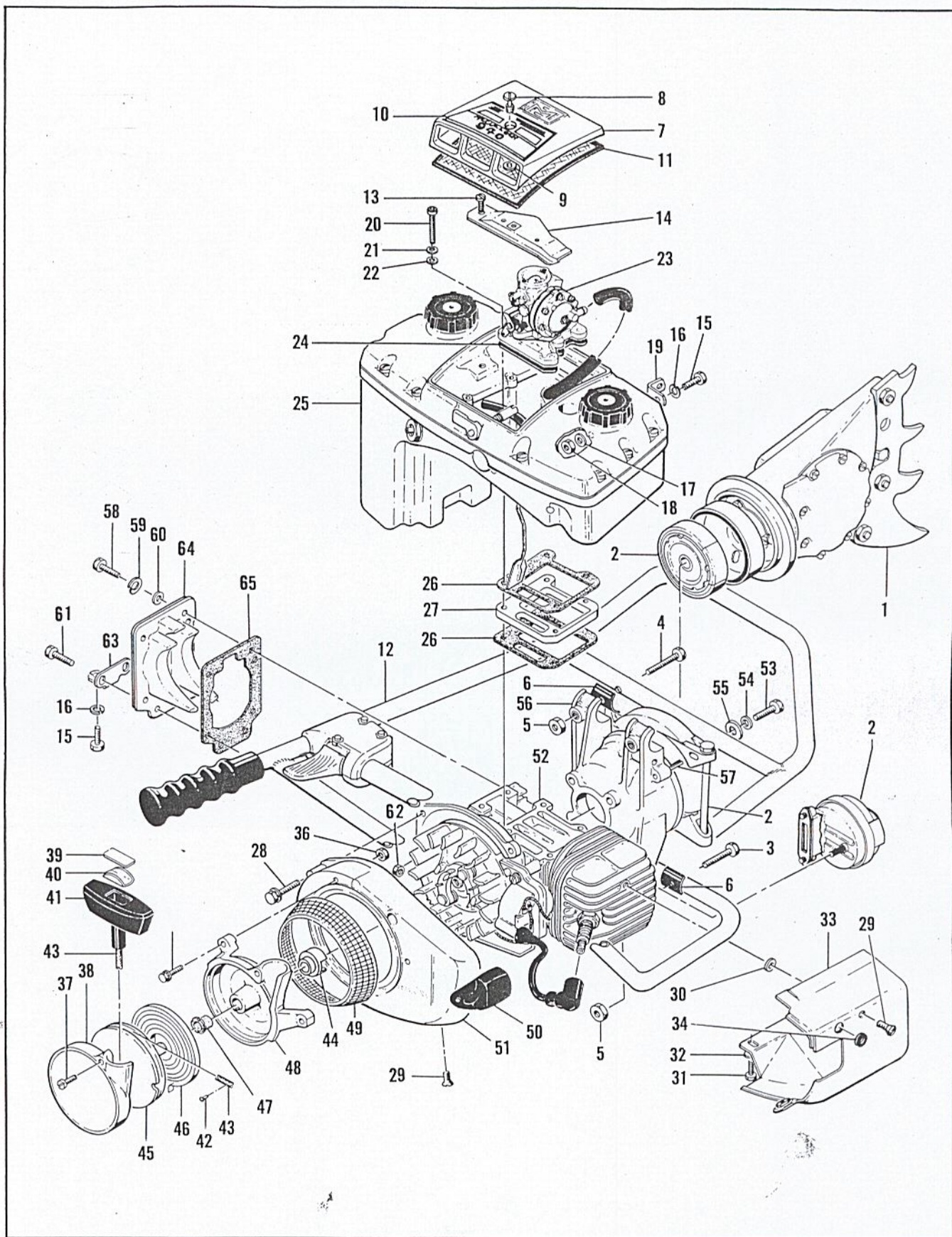


Figure 1. Model 940 Chain Saw

**FIGURE 1. MODEL 940 CHAIN SAW**

Item No.	Part Number	Description	Units Per Assy
1		Transmission and Sprocket Drive (See Figure 2)	
2		Clamp, Clutch and Muffler (See Figure 6)	
3	102130	Screw - Hx hd 1/4-20 x 1-1/2	2
4	102125	Screw - Hx hd 1/4-20 x 1-3/4	2
5	101143	Nut - Hx 1/4-20	2
6	50062	Insulator - Frame	4
7	55484	Cover Assy - Air cleaner	1
8	55032A	. Screw - Air cleaner cover	1
9	83367	. Nut - Retainer	1
10	60480A	. Nameplate	1
11	55498	Filter	1
12		Frame and Control Assy (See Figure 3)	
13	102500	Screw - Pan hd 10-24 x 1/2	1
14	69862	Anchor Assy - Air cleaner	1
15	100882	Screw - Hx hd 1/4-20 x 3/4	3
16	100153	Lockwasher - 1/4	3
17	100005	Washer - Plain 1/4	1
18	101143	Nut - Hx 1/4-20	1
19	58344	Brace - Angle	1
20	104560	Screw - Socket hd 10-24 x 1-1/2	4
21	100240	Lockwasher - #10	4
22	100002	Washer - Plain #10	4
23		Carburetor and Adapter (See Figure 7)	
24	69851	Gasket - Carburetor adapter	1
25		Fuel and Oiler Tank Assy (See Figure 4)	
26	58330	Gasket - Fuel tank insulator	2
27	57771B	Insulator - Fuel tank	1
28	104816	Screw - Hx hd 10-24 x 1-1/4 (SEMS)	3
29	106090	Screw - Pan hd 10-24 x 1/2	2
30	100003	Washer - Plain #10	1

Item No.	Part Number	Description	Units Per Assy
31	100732	Screw - Hx hd 1/4-20 x 5/8	2
32	100005	Washer - Plain 1/4	2
33	64567	Shroud Assy - Cylinder	1
34	101230	. Grommet	1
35	104815	Screw - Hx hd 10-24 x 7/8 (SEMS)	3
36	-101326	Nut - Hx 10-24	3
	-84211	Starter Assy	1
37	104396	. Screw - Pan hd 10-24 x 3/4	2
38	60647	. Cover - Starter	1
39	57232	. Plate - Starter handle	1
40	57231	. Cup - Starter handle	1
41	57230	. Handle - Starter	1
42	101136	. Rivet	1
43	28716	. Rope - Starter	1
44	57790	. Ratchet - Starter	1
45	57792	. Drum - Starter	1
46	51665	. Spring - Starter rewind	1
47	57535	. Bushing - Starter base	2
48	-84212	. Base - Starter	1
49	-84629	Screen - Sawdust	1
50	57565	Cover Assy - Spark plug	1
51	-69822	Fan Housing Assy	1
52		Powerhead Assy (See Figure 5)	
53	103258	Screw - Hx hd 1/4-20 x 1-1/8	4
54	100005	Washer - Plain 1/4	4
55	36306	Lockplate	4
56	58229	Housing Assy - Clutch	1
57	102036	. Pin - Roll 1/4 in. dia	2
58	101982	Screw - Hx hd 1/4-20 x 1	4
59	100153	Lockwasher - 1/4	7
60	100005	Washer - Plain 1/4	4
61	102121	Screw - Hx hd 1/4-20 x 7/8	2
62	101143	Nut - Hx 1/4-20	2
63	58151	Brace - Fuel tank	1
64	67254	Cover - Crankcase bottom	1
65	65654	Gasket - Crankcase bottom	1

Part numbers which have changed since the previous printing of the illustrated parts list covering these saws, are indicated by a dash (-) preceding the new part number.

MODEL  
940

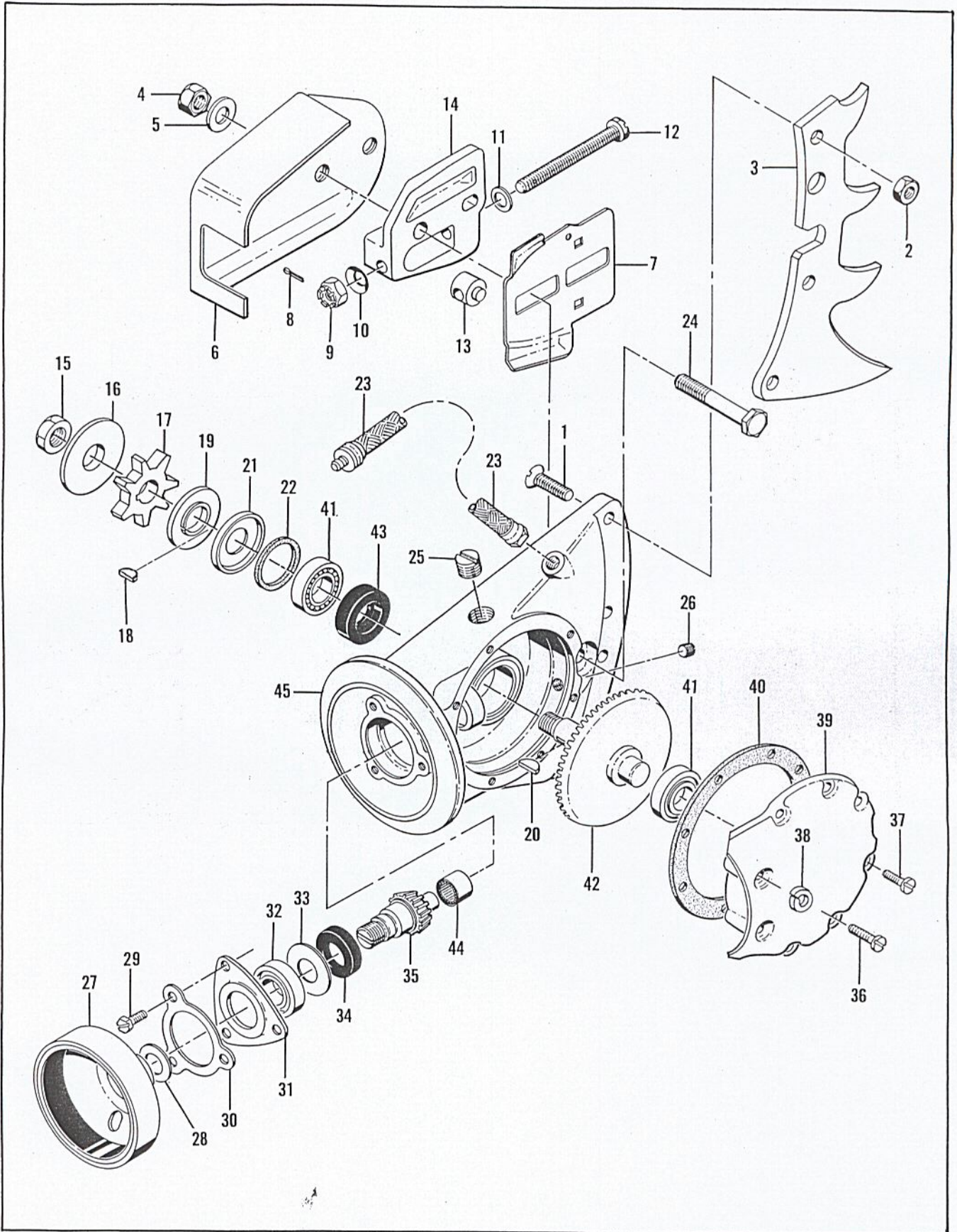


Figure 2. Transmission and Sprocket Drive

FIGURE 2. TRANSMISSION AND SPROCKET DRIVE

Item No.	Part Number	Description	Units Per Assy
1	104489	Screw - Flat hd 5/16-18 x 7/8	3
2	101330	Nut - Hx 5/16-18	3
3	61782	Spike	1
4	110625	Nut - Hx 3/8-24	2
5	-84623	Washer - Special	2
6	58127	Guard Assy - Chain	1
7	28066A	Plate - Protector	1
	58230	Clamp Assy - Bar adjusting	1
8	100010	Pin - Cotter 1/16 x 1/2	1
9	102022	Nut - Castle 5/16-24	1
10	24260	Spring - Thrust	1
11	100007	Washer - Plain 5/16	1
12	102193	Screw - Hx hd 5/16-24 x 3-1/2	1
13	19708	Nut - Bar adjusting	1
14	58231	Plate - Bar adjusting	1
15	100836	Nut - Hx jam 1/2-20	1
16	36862	Shroud - Sprocket (large)	1
17	36791A	Sprocket - 7 tooth, 9/16 in. pitch	1
18	103879	Key - Woodruff	1
19	36019A	Shroud - Sprocket (small)	1
20	100256	Key - Woodruff #6	1
21	19162	Shield - Dust	1
22	36155	Felt - Dust shield	1
23	58223	Line - Quick disconnect oil	1
	58133	Transmission Assy	1
24	57217	. Bolt - Bar mounting	2
25	101003	. Plug - Pipe	1

Item No.	Part Number	Description	Units Per Assy
26	104218	. Plug - Pipe	1
27	58134	. Drum Assy - Clutch	1
28	58348	. Spacer - Clutch drum	1
29	102388	. Screw - Hx hd 10-24 x 5/8	3
30	58350	. Lockplate	1
31	58349	. Retainer - Bearing	1
32	104422	. Bearing	1
33	58345	. Shim - Pinion 0.003 in. thick	As Req
	58346	. Shim - Pinion 0.010 in. thick	As Req
	58347	. Shim - Pinion 0.015 in. thick	As Req
34	58351	. Seal - Oil	1
35	*	. Pinion	1
36	104398	. Screw - Pan hd 10-24 x 1	2
37	104395	. Screw - Pan hd 10-24 x 5/8	6
38	100240	. Lockwasher - #10	8
39	58124	. Cover - Gearcase	1
40	58193	. Shim - Cover 0.005 in. thick	As Req
	58207	. Shim - Cover 0.012 in. thick	As Req
	58208	. Shim - Cover 0.020 in. thick	As Req
41	103482	. Bearing - Ball	2
42	*	. Gear - Bevel	1
43	102577	. Seal - Oil	1
44	104487	. Bearing - Needle	1
45	58125	. Gearcase	1

\* Matched gear set - Order Gear Set P/N 58352

MODEL  
940

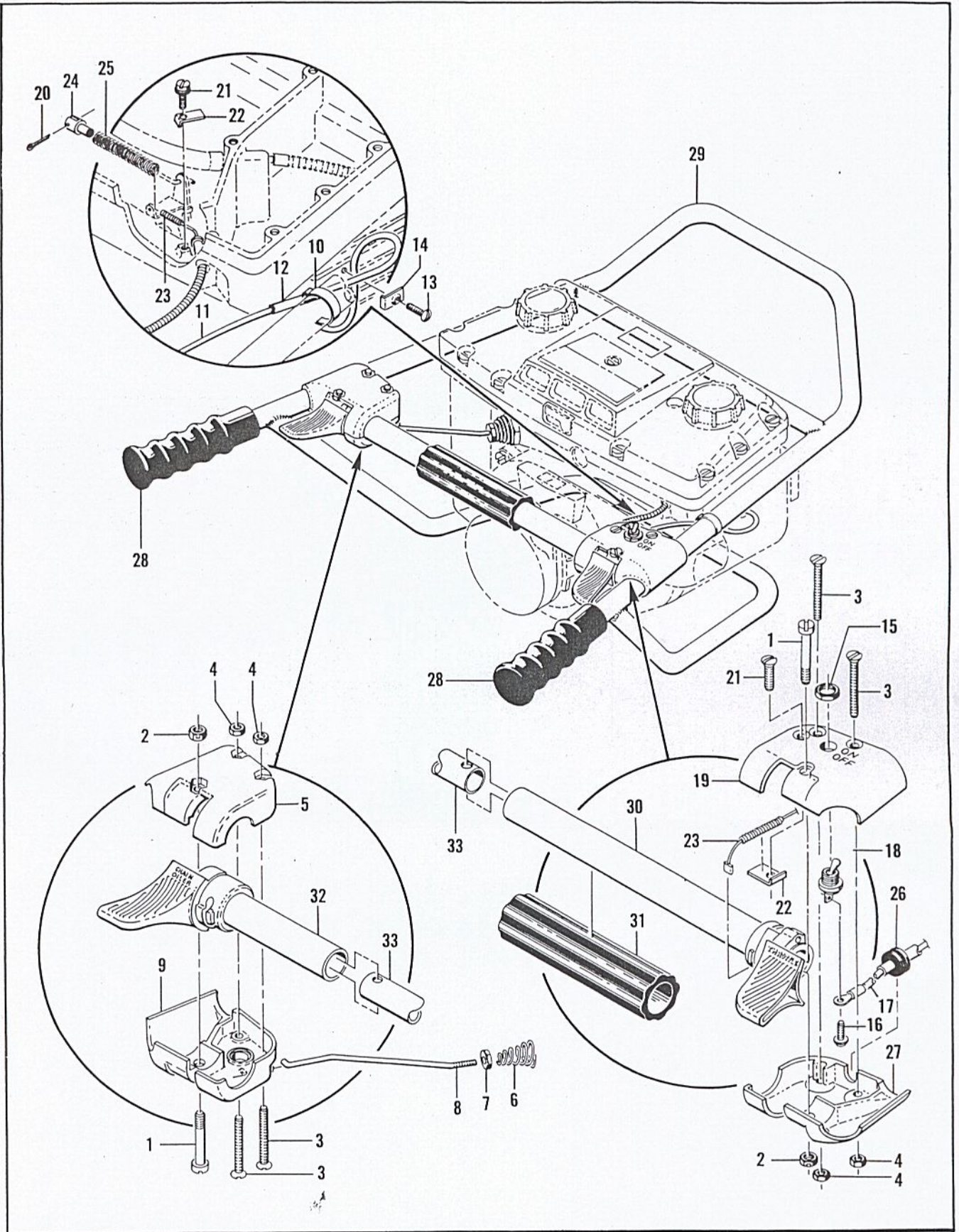


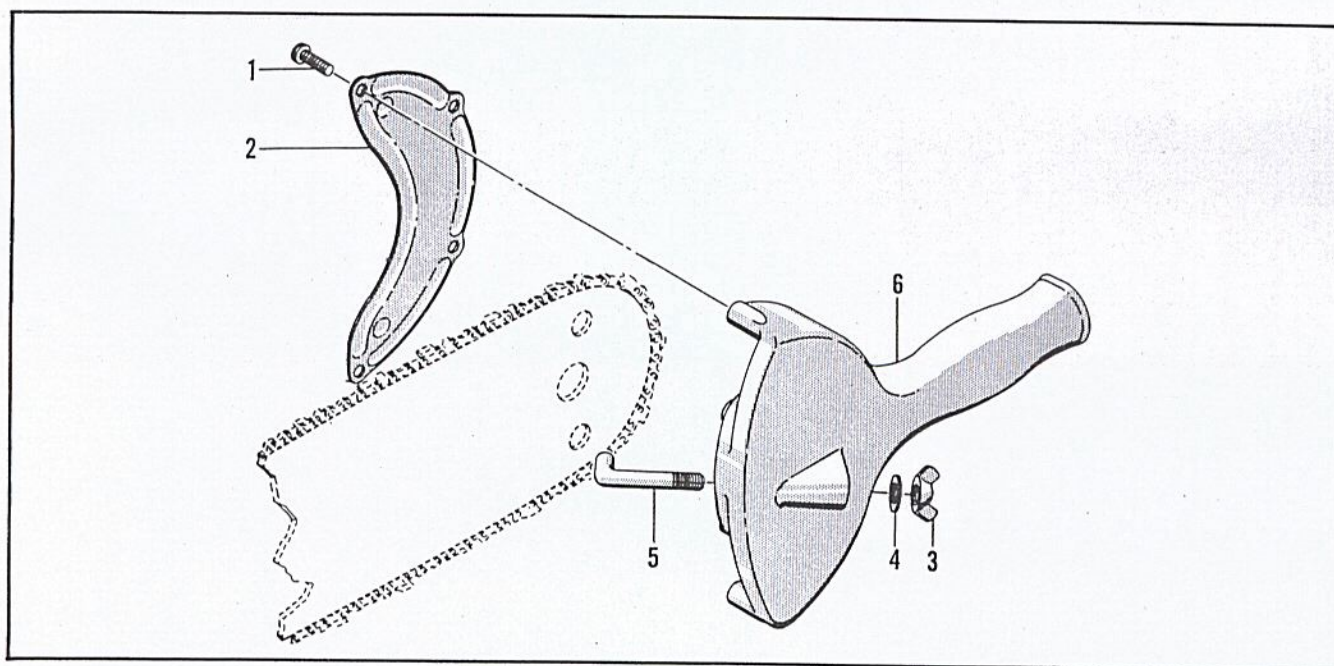
Figure 3. Frame and Control Assembly

FIGURE 3. FRAME AND CONTROL ASSEMBLY

Item No.	Part Number	Description	Units Per Assy
1	102292	Screw - Fil hd 1/4-20 x 1-1/2	2
2	101143	Nut - Hx 1/4-20	2
3	102132	Screw - Flat hd 10-24 x 1-3/4	4
4	101326	Nut - Hx 10-24	4
5	24593	Cover - Oiler lever (top)	1
6	58209	Spring - Oiler rod	1
7	104066	Locknut - 10-32	1
8	58157	Pushrod - Oiler	1
9	58260	Cover - Oiler lever (bottom)	1
10	18909A	Clip - Cable	1
11	58224	Wire Assy - Ignition	1
12	18974A	Sleeve Assy	1
13	101386	Screw - Oval hd 10-24 x 5/8	1
14	24547	Clamp - Bodewire	1
15	104810	Nut - Special	1
16	103934	Screw - 6-32 x 1/4 (SEMS)	1
17	24182	Wire Assy - Ignition switch	1

Item No.	Part Number	Description	Units Per Assy
18	58387	Switch - Ignition	1
19	58386	Cover - Throttle lever (top)	1
20	101901	Pin - Cotter 0.06 x 3/8	1
21	101966	Screw - Rd hd 10-24 x 5/8 (SEMS)	1
22	58155	Clamp - Throttle wire	1
23	58225	Wire Assy - Throttle	1
24	18360A	. Clevis - Throttle	1
25	18379A	. Spring - Throttle	1
26	101283	Grommet	1
27	24593	Cover - Throttle lever (bottom)	1
28	18207A	Grip - Handle	2
29	58194A	Frame Assy	1
30	58147	. Lever Assy - Throttle	1
31	18202A	. Grip - Hand	1
32	58146	. Lever Assy - Oiler	1
33	58145	. Crossbar - Frame	1

FIGURE 4. OUTBOARD HANDLE (ACCESSORY)



Item No.	Part Number	Description	Units Per Assy
	19937	Handle Assembly - Outboard	1
1	100250	. Screw - Self Tapping	4
2	18229A	. Cover - Outboard handle	1
3	101318	. Nut - Wing 5/16-18	1

Item No.	Part Number	Description	Units Per Assy
4	100007	. Washer - Plain 5/16	1
5	19394	. Bolt - Blade clamp	1
6	19935	. Handle - Outboard (casting)	1

MODEL  
940

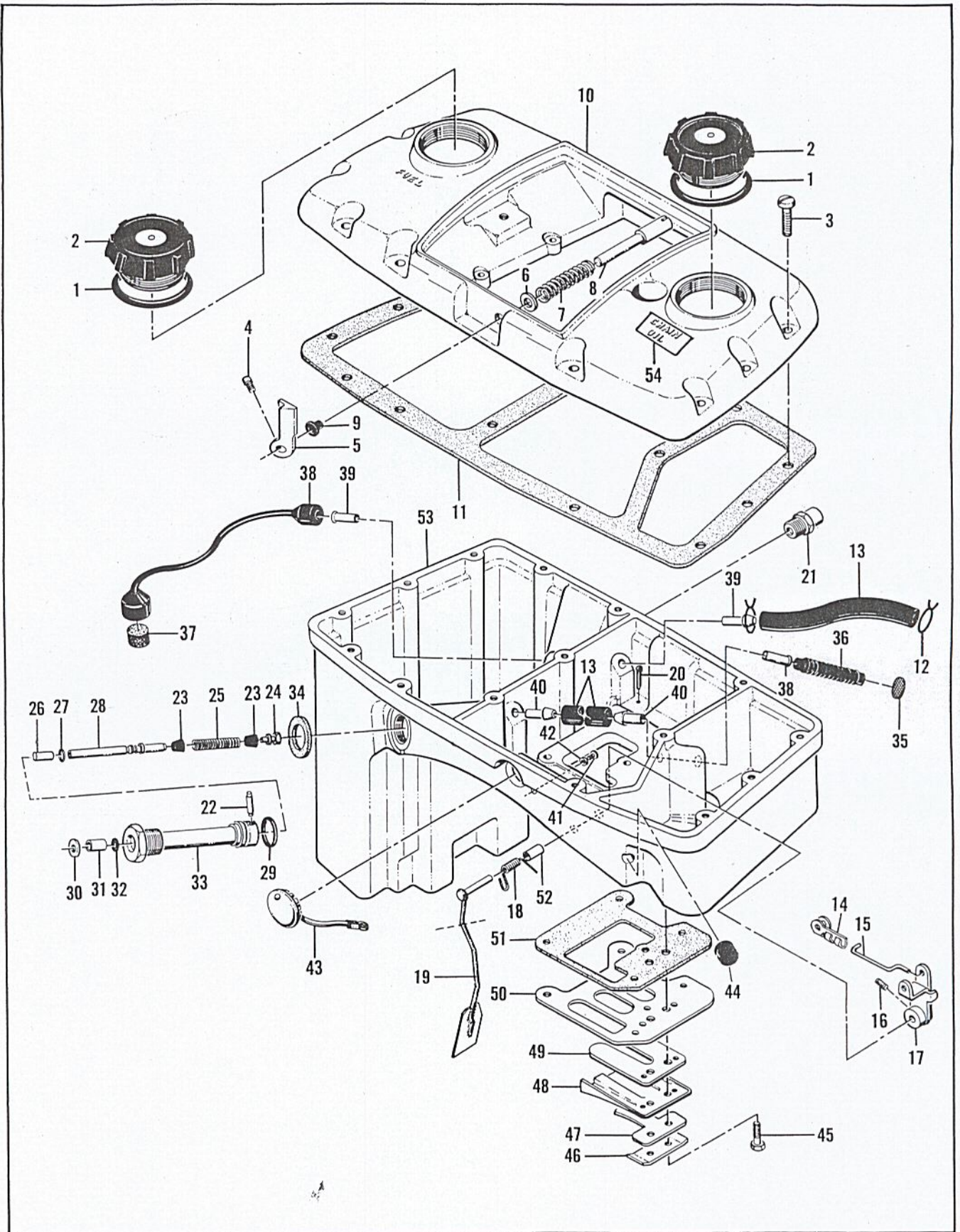


Figure 5. Fuel and Oil Tank Assembly



FIGURE 5. FUEL AND OIL TANK ASSEMBLY

Item No.	Part Number	Description	Units Per Assy
1	101348	"O" Ring	2
2	55934B	Cap Assy	2
3	104397	Screw - Pan hd 10-24 x 7/8	15
4	103183	Screw - Set 5-40	1
5	58222	Lever - Choke	1
6	100644	Washer - Plain 1/4	1
7	19236	Spring	1
8	58218	Extension - Choke shaft	1
9	58237	Grommet	1
10	65516	Cover - Fuel tank	1
11	65656	Gasket - Fuel tank	1
12	50742	Clamp - Hose	2
13	58143	Hose - Fuel and oil pickup	2
14	**59159	Clip - Throttle rod	1
15	* 69861	Rod - Throttle	1
	**85483	Rod - Throttle	1
16	* 104154	Screw - Set 8-32 x 1/4	1
	**104106	Screw - Set 6-32 x 3/16	1
17	58250A	Lever Assy - Governor arm	1
18	55966C	Spring - Governor arm	1
19	† 58248B	Arm Assy - Governor	1
20	104310	Pin - Cotter	1
21	58219	Fitting Assy - Quick disconnect	1
	47571	Pump Assy - Oil	1
22	24106	. Pin - Oil pump	1
23	24104A	. Cup - Packing	2
24	24105A	. Plug - Oil pump	1
25	28215	. Spring - Oil pump	1
26	24102	. Sleeve - Oil pump	1
27	101258	. "O" Ring	1

Item No.	Part Number	Description	Units Per Assy
28	24938	. Plunger - Oil pump	1
29	101218	. "O" Ring	1
30	100950	. Washer - Plain 1/4	1
31	24108	. Seal - Oil pump	1
32	101056	. "O" Ring	1
33		. Delete	
34	24120	. Gasket	1
	51505	Weight Assy - Oil pump	1
35	51506	. Screen - Oil pump	1
36	28007	Hose - Oil pump	1
37	50124A	Filter - Felt	1
38	50082	Hose - Fuel pickup	1
39	58766	Nipple - Tube	2
40	57590	Nipple - Tube	3
41	110006	Rivet - Oval 1/8 x 11/32	1
42	101871	Washer - Plain 1/8	1
43	51396A	Cover Assy - Adjustment hole	1
44	101283	Grommet - Throttle control	1
45	103740	Screw - Hx hd 8-32 x 5/8	2
46	51480	Lockplate	1
47	57658A	Clamp - Reed valve	1
48	57654A	Deflector - Fuel	1
49	58399	Valve - Reed	1
50	53685C	Plate - Reed valve	1
51	65657	Gasket - Fuel tank	1
52	58238	Bushing - Governor shaft	1
53	63008	Tank - Fuel and oil	1
54	63332	Decal - Oil	1

\* Used on models with serial numbers prefixed 11-

\*\* Used on models with serial numbers prefixed 12-

† Clipped on models with serial numbers prefixed 12- (see dotted line on drawing)

**MODEL  
940**

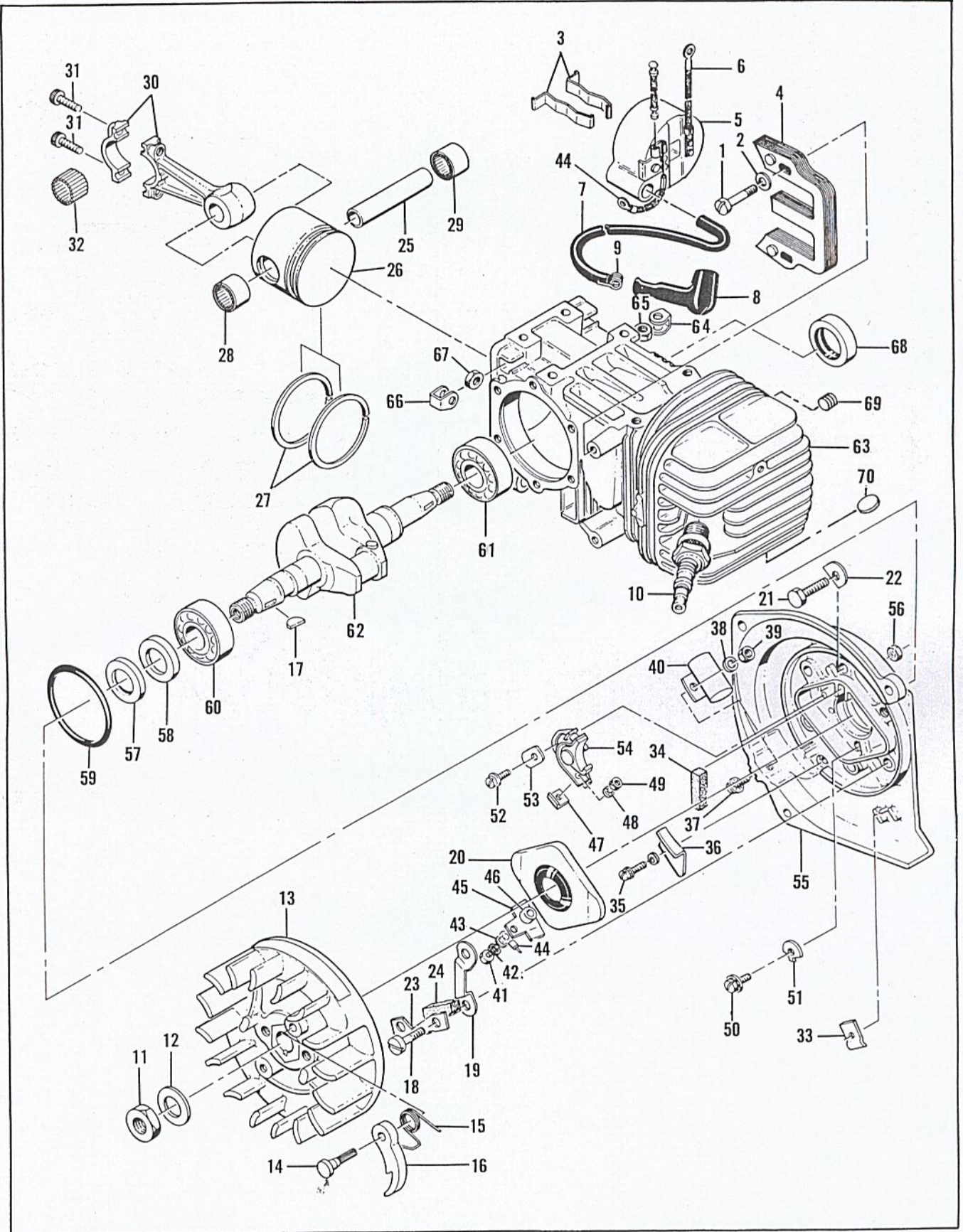


Figure 6. Powerhead Assembly

FIGURE 6. POWERHEAD ASSEMBLY

Item No.	Part Number	Description	Units Per Assy
1	104815	Screw - Fil hd 10-24 x 7/8 (SEMS)	2
2	100352	Washer - Plain #10	2
3	51253	Retainer - Coil	2
4	51251	Lamination Assy - Coil	1
5	58822	Coil and Terminal Assy	1
6	101883	. Wire Assy - Ground	1
7	-50120	. Wire Assy - Spark plug	1
8	55060	. . Boot - Spark plug	1
9	55061	. . Connector - Spark plug wire	1
10	83564	Spark Plug - 14 mm	1
11	* 101179	Nut - Hx 7/16-20	1
	** -110655	Nut - Hx 7/16-20 Flange	1
12	101270	Washer - Plain 7/16	1
13	68282	Flywheel Assy	1
14	36144B	. Pin - Starter pawl	2
15	66351	. Spring - Starter pawl	2
16	24093	. Pawl - Starter	2
17	103879	Key - Woodruff	1
18	102763	Screw - Hx hd 10-24 x 3/4	4
19	55977	Clip - Breaker box cover	2
20	55766B	Cover Assy - Breaker box	1
21	102763	Screw - Hx hd 10-24 x 3/4	2
22	36388	Lockplate	1
23	57815	Strap - Seal	1
24	50664	Seal - Breaker box drain	1
25	* 62831	Pin - Piston	1
	** -69408	Pin - Piston	1
26	62883	Piston Assy - Standard (For oversize piston, see pg. 15)	1
27	62422	. Ring Set - Piston standard (For oversize ring set, see pg. 15)	1
28	* 62867	. Bearing - Needle	1
	** -104519	. Bearing - Needle	1
29	62868	. Bearing - Needle (closed end)	1
30	47903	Connecting Rod Assy	1
31	60210A	. Screw - Socket hd 10-32 x 9/16	2
32	69891	. Roller - Needle	24
33	104230	Speednut	1

Item No.	Part Number	Description	Units Per Assy
34	54184	Wiper - Felt	1
35	110055	Screw - 8-32 x 3/8 (SEMS)	1
36	57829	Clamp - Ignition wire	1
37	110338	Screw - Hex hd 8-32 x 9/16	1
38	100080	Washer - Plain #8	1
39	100251	Nut - Hx 8-32	1
40	* 50074	Condenser	1
	** -85358	Condenser	1
41	103748	Screw - Hx hd 8-32 x 1/2	1
42	100057	Lockwasher - #8	1
43	100080	Washer - Plain #8	1
44	57766	Wire Assy - Primary	1
45	55782A	Insulator - Breaker	1
46	57769	Insulator - Ignition screw	1
47	57770A	Insulator - Breaker spring	1
48	104553	Lockwasher - #8	1
49	104551	Nut - Hx 8-32	1
50	104733	Screw - Fil hd 8-32 x 1/2 (SEMS)	1
51	55778E	Washer - Breaker retainer	1
52	104733	Screw - Fil hd 8-32 x 1/2 (SEMS)	1
53	57767A	Lockplate	1
54	57765B	Breaker Assy	1
55	84193	-Cover Assy - Crankcase	1
56	101326	. Nut - Hx 10-24	3
57	57897	. Seal - Oil	1
58	57898	. Seal - Oil	1
59	104523	"O" Ring	1
60	100824	Bearing - Ball	1
61	104490	Bearing - Ball	1
62	58128	Crankshaft	1
63	58551A	Crankcase Assy	1
64	28053	. Retainer	2
65	101326	. Nut - Hx 10-24	2
66	18556A	. Retainer - Nut	6
67	105394	. Nut - Hx 1/4-20	6
68	104486	. Seal - Oil	1
69	* 110034	. Insert - Taplock	3
	** -110685	. Insert - Taplock	3
70	* 110340	. Plug - Expansion	3
	** -83374	. Plug - Cup	3

\* Used on models with serial numbers prefixed 11-  
\*\* Used on models with serial numbers prefixed 12-

MODEL  
940

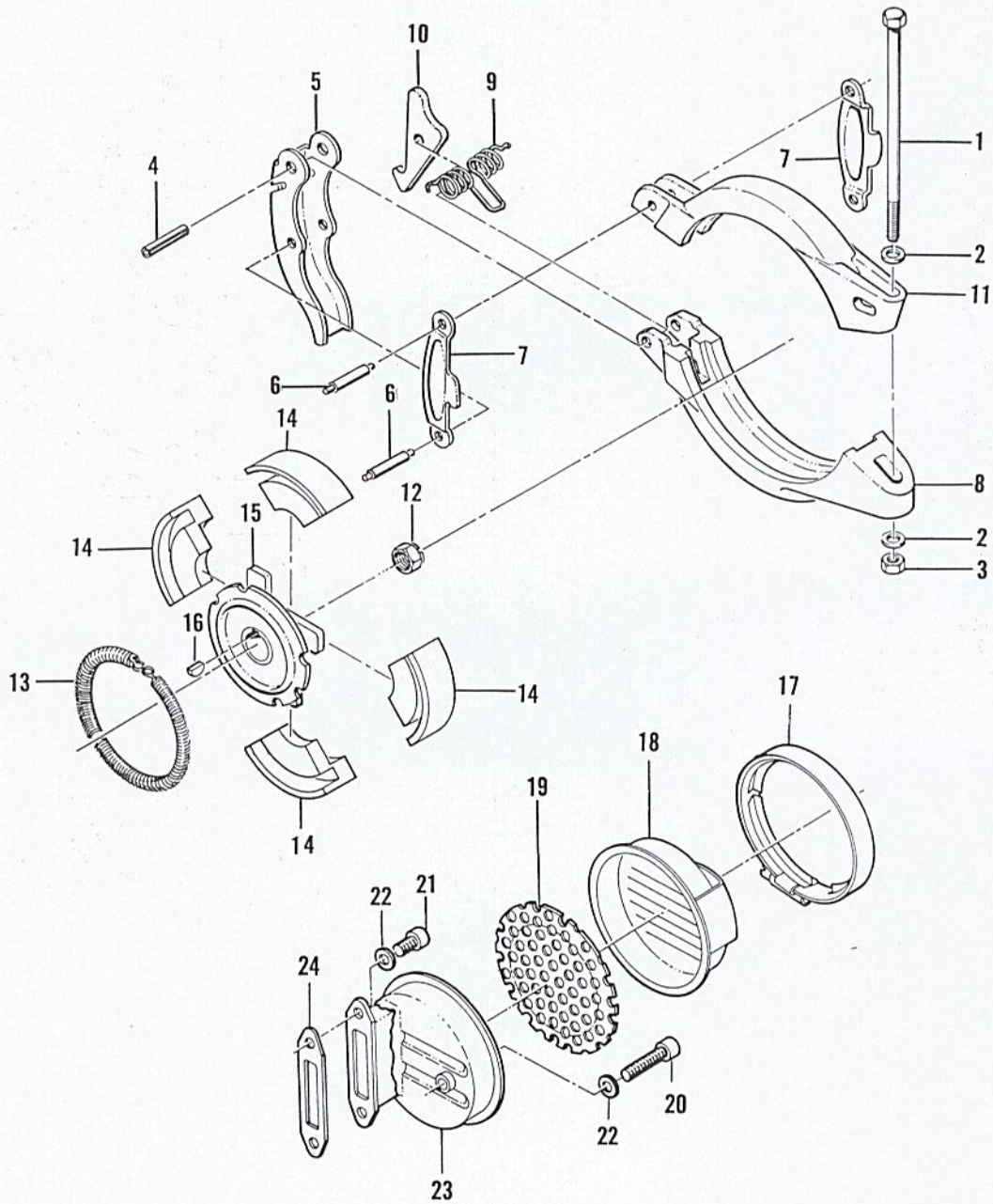


Figure 7. Clamp, Clutch and Muffler

FIGURE 7. CLAMP, CLUTCH AND MUFFLER

Item No.	Part Number	Description	Units Per Assy
	58181D	Clamp Assy - Transmission	1
1	104488	. Bolt - Clamp ring	1
2	100311	. Washer - Plain 1/4	2
3	101143	. Nut - Hx 1/4-20	1
4	104887	. Pin - Groove 1/4 x 1	1
5	24446	. Lever - Clamp ring	1
6	24447	. Pin - Clamp ring	2
7	24445A	. Link - Clamp ring	2
8	58186B	. Ring - Clamp (lower)	1
9	24719	. Spring - Latch	1
10	24720	. Latch - Spring	1
11	58182A	. Ring - Clamp (upper)	1
12	103746	Nut - Flexloc 3/8-24	1
	-60315	Clutch Assy	1

Item No.	Part Number	Description	Units Per Assy
13	51468A	. Spring - Clutch	1
14	51464A	. Shoe - Clutch	4
15	-60316	. Rotor Assy - Clutch	1
16	103879	Key - Woodruff	1
17	83368	Clamp	1
18	68238	Top Assy	1
19	69325	Baffle	1
20	101563	Screw - Skt hd 10-24 x 1-1/4	1
21	104895	Screw - Skt hd 10-24 x 5/8	2
22	83745	Washer	3
23	68241	Bottom Assy	1
24	* 53652	Gasket - Muffler	1
	** -83379	Gasket - Muffler	1

\* Used on models with serial numbers prefixed 11-  
\*\* Used on models with serial numbers prefixed 12-

ACCESSORIES

Part Number	Description
61040	Wrench and Screwdriver Combination
36248	Wrench - Spark plug
69870	Owner's Manual of Operating Instructions
62884	Piston Assy - 0.030 in. oversize
62423	. Ring Set - 0.030 in. oversize

Part Number	Description
25074B	Auger Assy - 6 in.
25075B	Auger Assy - 9 in.
25076B	Auger Assy - 12 in.
58398	Shim - Transmission clamp ring 0.030 in. thick
58397	Shim - Transmission clamp ring 0.015 in. thick
65712	Timing Guide

SPECIFICATIONS - MODEL 940

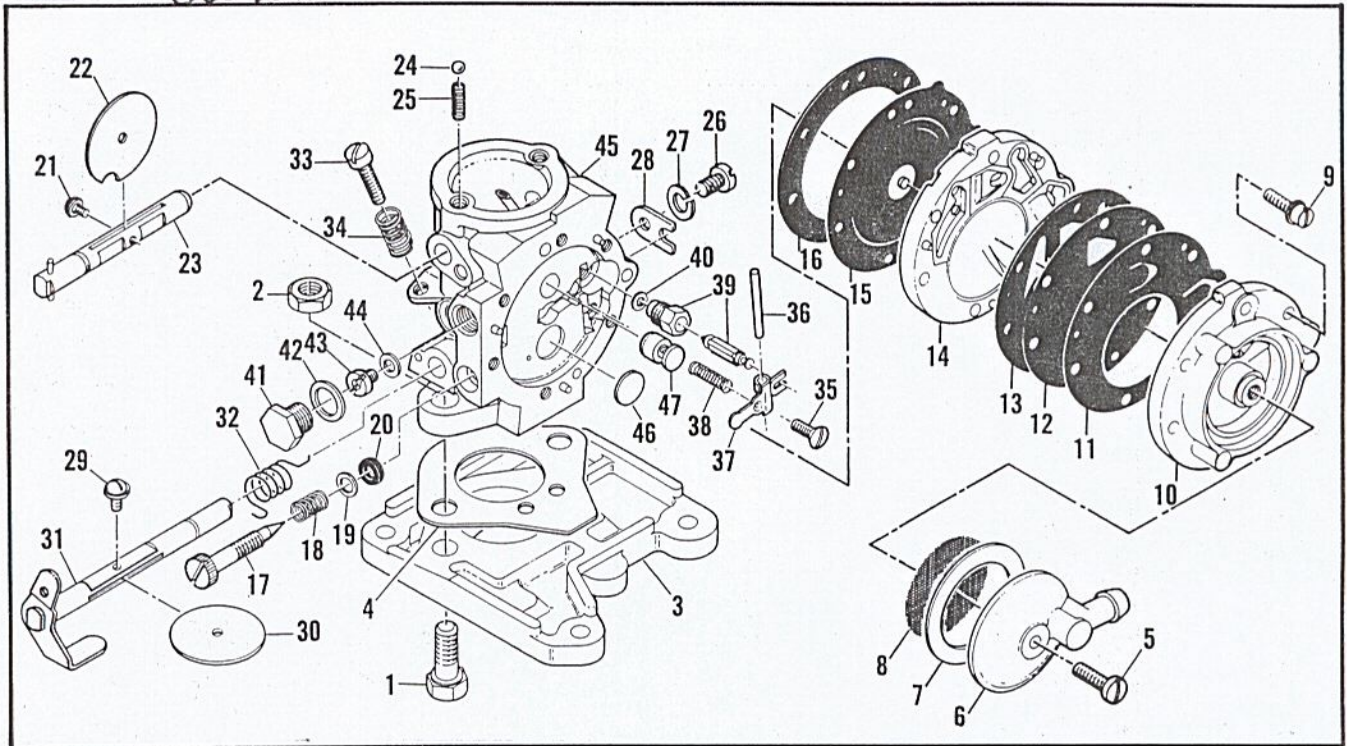
Spark Plug	_____	Champion J8J
Spark Plug Gap	_____	0.025 inch
Lamination-Flywheel Gap	_____	0.010-0.015 inch
Breaker Point Gap	_____	0.018 inch
Carburetor Adjustment:		
Idle needle	_____	1 turn open; adjust for even idle speed and smooth, rapid acceleration
High speed needle	_____	Fixed jet
Torque Values:		
Flywheel nut	_____	350-400 inch/pounds
Clutch nut	_____	240-300 inch/pounds
Connecting rod screws	_____	105/110 inch/pounds

# MODEL

## 940

NOTE \*84479  
Carb.

### FIGURE 8. CARBURETOR AND ADAPTER



Item No.	Part Number	Description	Units Per Assy
1	102157	Screw - Fil hd 1/4-20 x 5/8	2
2	101143	Nut - Hx 1/4-20	2
3	69853	Adapter - Carburetor	1
4	65586	Gasket - Carburetor	1
*	**69856	Carburetor Assy 84479	1
5	*51701	. Screw - Fuel strainer cover	1
6	51599	. Cover - Fuel strainer	1
7	48762	. Gasket - Fuel strainer cover	1
8	*48761	. Screen - Fuel strainer	1
9	51597	. Screw Assy - Fuel pump body	6
10	84031	. Body - Fuel pump	1
11	*84030	. Diaphragm - Check valve	1
12	*84029	. Diaphragm - Fuel pump	1
13	65592	. Gasket - Fuel pump	1
14	84027	. Cover - Diaphragm	1
15	*66167	. Diaphragm - Metering	1
16	65591	. Gasket - Diaphragm	1
17	*52935	. Needle - Idle mix	1
18	*52936	. Spring	1
19	52937	. Washer	1
20	52938	. Packing - Needle	1
21	51721	. Screw Assy	1
22	84026	. Shutter - Choke	1
23	84025	. Shaft Assy - Choke	1
24	100071	. Ball - Choke friction	1
25	52930	. Spring - Choke friction	1
26	51717	. Screw	1
27	100252	. Lockwasher	1

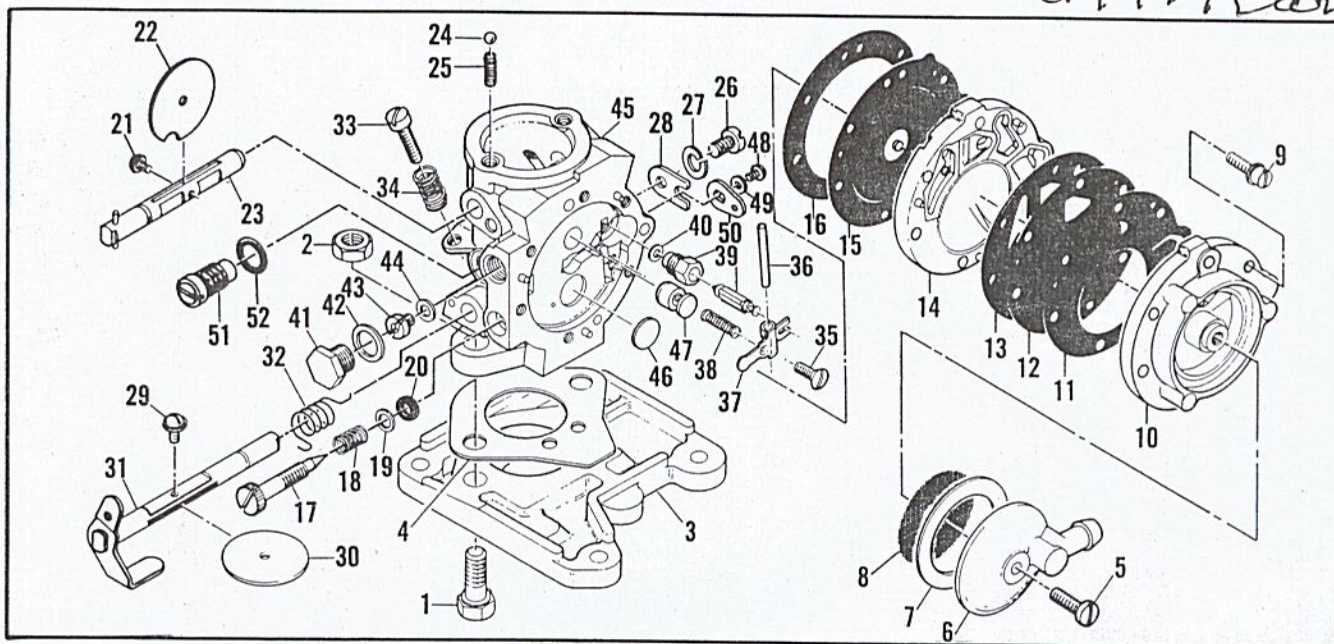
Item No.	Part Number	Description	Units Per Assy
28	51716	. Clip - Throttle shaft	1
29	*51721	. Screw Assy	1
30	84041	. Shutter - Throttle	1
31	84039	. Shaft Assy - Throttle	1
32	84040	. Spring - Return	1
33	*52940	. Screw - Idle speed adj.	1
34	*51705	. Spring	1
35	*66644	. Screw	1
36	*84033	. Pin - Inlet valve	1
37	*84032	. Lever - Inlet valve	1
38	*66404	. Spring - Inlet lever	1
39	*84034	. Needle and Seat - Inlet	1
40	51708	. Gasket - Inlet valve	1
41	84037	. Plug - Main fuel jet	1
42	52941	. Gasket	1
43	*84035	. Jet - Main fuel (0.041 orifice)	1
	84057	. Jet - Main fuel (0.043 orifice)	Alt
	84058	. Jet - Main fuel (0.039 orifice)	Alt
	84059	. Jet - Main fuel (0.037 orifice)	Alt
44	84036	. Gasket - Main fuel jet	1
45	84024	. Body - Carburetor	1
46	*51583	. Plug - Welch	1
47	84038	. Nozzle - Check valve	1
	*84042	Gasket & Packing Set	
	84043	Repair Parts Kit	

\* Indicates parts contained in Repair Parts Kit #84043.

\*\* Used on models with serial numbers prefixed 11-.

FIGURE 9. CARBURETOR AND ADAPTER

84479 Carb



Item No.	Part Number	Description	Units Per Assy
1	102157	Screw - Fil hd 1/4-20 x 5/8	2
2	101143	Nut - Hx 1/4-20	2
3	69853	Adapter - Carburetor	1
4	65586	Gasket - Carburetor	1
**	85484	Carburetor Assy 84479	1
5	51701	. Screw - Fuel strainer cover	1
6	51599	. Cover - Fuel strainer	1
7	48762	. Gasket - Fuel strainer cover	1
8	85995	. Screen - Fuel strainer	1
9	51597	. Screw Assy - Fuel pump body	6
10	84031	. Body - Fuel pump	1
11	* 84030	. Diaphragm - Check valve	1
12	* 84029	. Diaphragm - Fuel pump	1
13	65592	. Gasket - Fuel pump	1
14	84027	. Cover - Diaphragm	1
15	* 66167	. Diaphragm - Metering	1
16	65591	. Gasket - Diaphragm	1
17	* 52935	. Needle - Idle mix	1
18	* 52936	. Spring	1
19	52937	. Washer	1
20	52938	. Packing - Needle	1
21	51721	. Screw Assy	1
22	84026	. Shutter - Choke	1
23	84025	. Shaft Assy - Choke	1
24	100071	. Ball - Choke friction	1
25	52930	. Spring - Choke friction	1
26	51717	. Screw	1
27	100252	. Lockwasher	1
28	51716	. Clip - Throttle shaft	1

Item No.	Part Number	Description	Units Per Assy
29	* 51721	. Screw Assy	1
30	84041	. Shutter - Throttle	1
31	84039	. Shaft Assy - Throttle	1
32	84040	. Spring - Return	1
33	* 52940	. Screw - Idle speed adj.	1
34	* 51705	. Spring	1
35	* 66644	. Screw	1
36	* 84033	. Pin - Inlet valve	1
37	* 84032	. Lever - Inlet valve	1
38	* 66404	. Spring - Inlet lever	1
39	* 84034	. Needle and Seat - Inlet	1
40	51708	. . Gasket - Inlet valve	1
41	84037	. Plug - Main fuel jet	1
42	52941	. Gasket	1
43	* 84035	. Jet - Main fuel (0.041 orifice)	1
	84057	. Jet - Main fuel (0.043 orifice)	Alt
	84058	. Jet - Main fuel (0.039 orifice)	Alt
	84059	. Jet - Main fuel (0.037 orifice)	Alt
44	84036	. Gasket - Main fuel jet	1
45	84024	. Body - Carburetor	1
46	* 51583	. . Plug - Welch	1
47	85993	. . Nozzle - Check valve	1
48	51719	Screw - Throttle lever	1
49	100261	Lockwasher	1
50	51718	Lever - Throttle	1
51	85994	Governor Assembly	1
52	83548	Gasket - Governor Assy	1
	85992	Gasket & Packing Set	
	85991	Repair Parts Kit	

\* Indicates parts contained in Repair Parts Kit # 85991  
 \*\*Used on models with serial numbers prefixed 12-