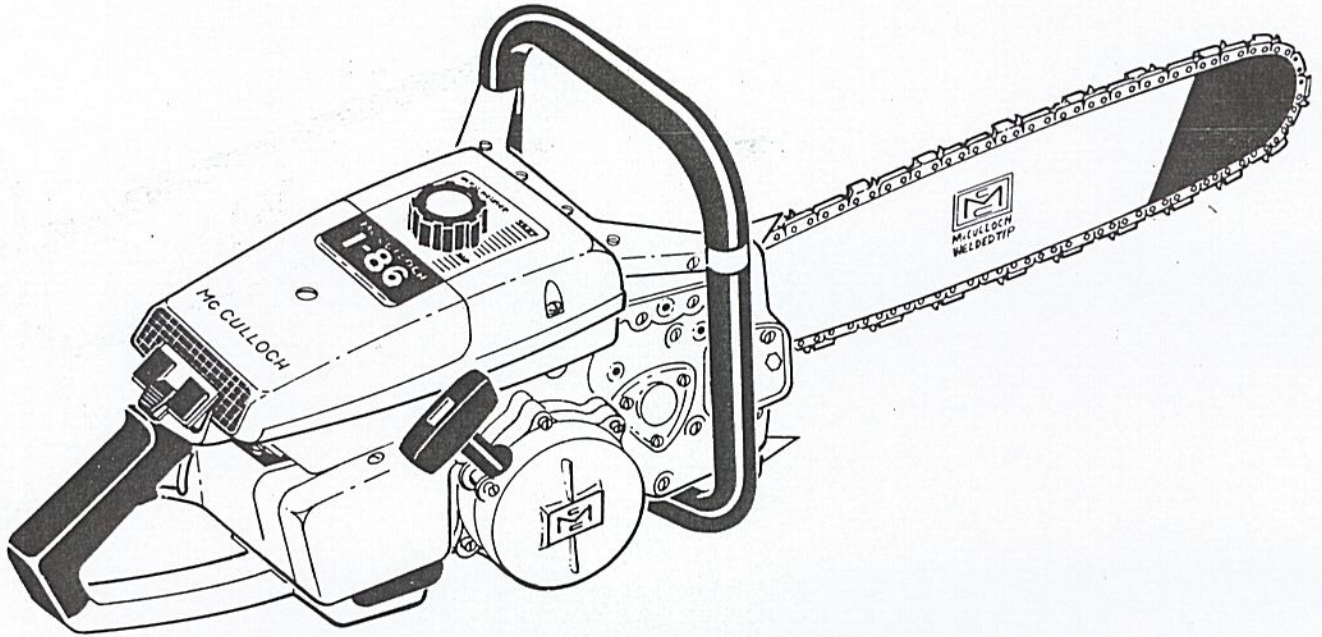


ILLUSTRATED PARTS LIST

JULY 1962



The following pages contain an illustrated parts list for the Model 1-86 Chain Saw. Due to small differences between saws, it is important that the Serial Number of your saw be included whenever spare parts are ordered. This will assure receiving the proper parts from your dealer.

	Page
Figure 1. Engine Exploded View - General	2
Figure 2. Fuel System Components	4
Figure 3. Starter and Clutch Assembly	6
Figure 4. Transmission Assembly	8
Figure 5. Powerhead Assembly	10
Figure 6. McCulloch Carburetor Assembly	12
Figure 7. Lockplate Adjusting Assembly, Bar and Chain	14
Figure 8. Plunge Bow Saw Assembly	16
Figure 9. Handle and Control Assembly	18



McCULLOCH CORPORATION
 8101 West Century Boulevard,
 Los Angeles 45, California

MODEL
1-86

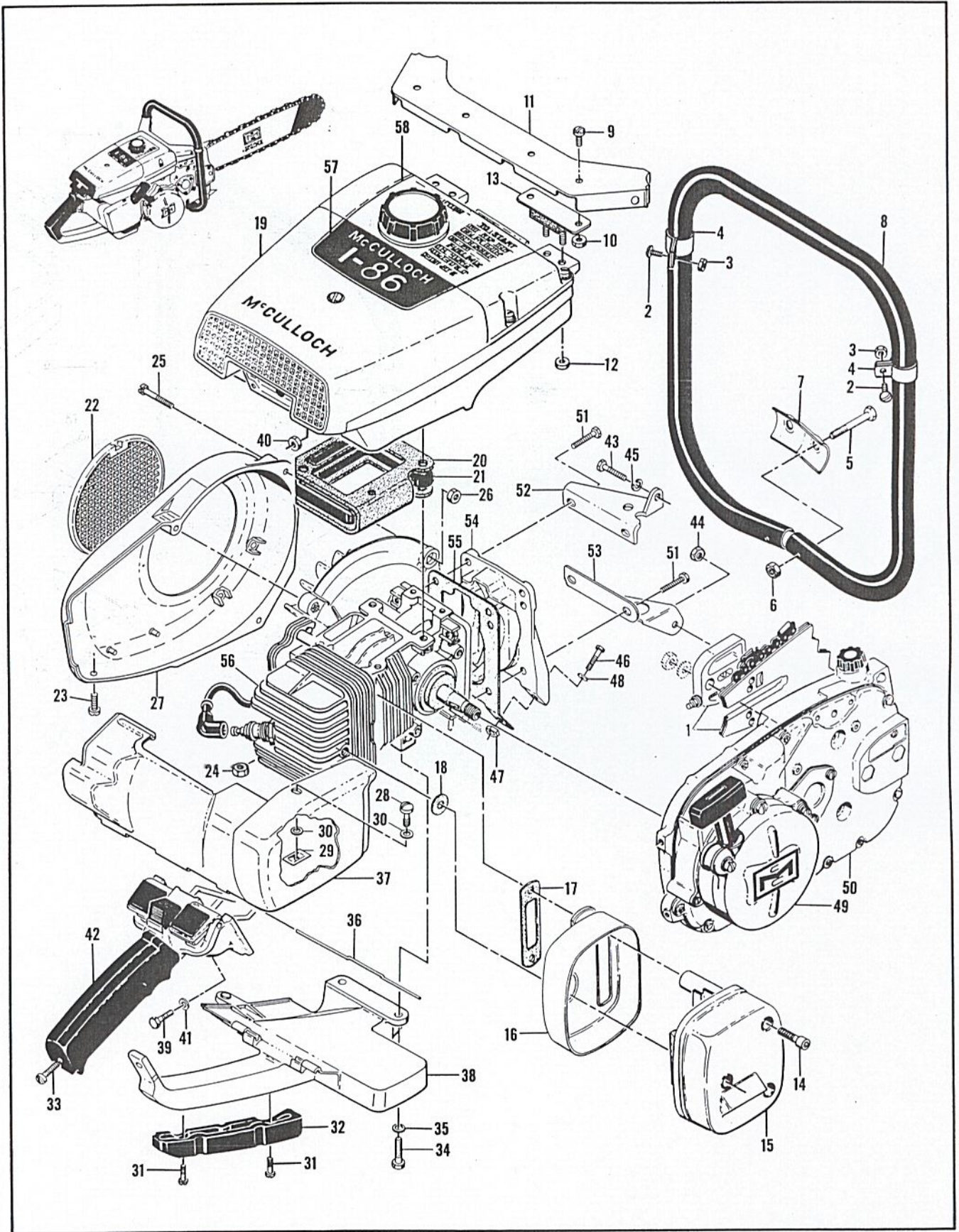


Figure 1. Engine Exploded View - General

FIGURE 1. ENGINE EXPLODED VIEW—GENERAL

Index No.	Part Number	Nomenclature	Units Per Assy
1		Bar - Chain and Lockplate Adjusting Assy (See figure 7)	1
2	102763	Screw - Hex hd 10-24 x 3/4 in. lg.	2
3	100239	Nut - Hex 10-24	2
4	104899	Clamp	2
5	102125	Screw - Hex hd 1/4-20 x 1-3/4 in. lg.	2
6	101143	Nut - Hex 10-24	2
7	51660	Clamp - Frame	1
8	53483	Frame and Grip Assy	1
9	104393	Screw - Pan hd 10-24 x 3/8 in. lg.	4
10	101191	Nut - Hex 10-24	4
11	55638	Brace - Frame	1
12	101191	Nut - Hex 10-24	4
13	55606B	Mount - Shock	2
14	104895	Screw - Socket hd 10-24 x 5/8 in. lg.	3
	53476	Muffler Assembly	1
15	53479	. Top Assembly - Muffler	1
16	53478	. Bottom Assembly - Muffler	1
17	53652	Gasket - Muffler	1
18	53651	Washer - Insulating	1
19		Fuel System Components (See figure 2)	1
20	53768	Gasket - Fuel Tank - Insulator	1
21	53684	Insulator	1
22	55615	Guard - Flywheel	1
23	104397	Screw - Pan hd 10-24 x 7/8 in. lg.	1
24	102067	Nut - Hex 10-24	1
25	104816	Screw - 10-24 x 1-1/4 in. lg. (SEMS)	3
26	101191	Nut - Hex 10-24	2
27	57733	Fan Housing	1
28	51351	Screw - Special	1
29	103741	Speednut	1
30	100005	Washer	2
31	104483	Screw - Binder hd 10-24 x 5/8 in. lg.	2
32	55941	Insert - Handle brace	1
33	102500	Screw - Pan hd 10-24 x 1/2 in. lg.	1
34	102121	Screw - Hex hd 1/4-20 x 7/8 in. lg.	2
35	100005	Washer	2
36	55885	Pin - Shroud hinge	1
37	55419A	Shroud Assembly - Cylinder and muffler	1
38	57872	Brace Assembly - Handle	1
39	102761	Screw - Hex hd 10-24 x 7/8 in. lg.	2
40	102067	Nut - Hex 10-24	2
41	102189	Washer - #10 plain	2
42		Handle and Control Assembly (See figure 9)	1
43	100882	Screw - Hex hd 1/4-20 x 3/4 in. lg.	1
44	100640	Nut - Hex 1/4-28	1
45	100153	Lockwasher - 1/4 inch	1
46	100882	Screw - Hex hd 1/4-20 x 3/4 in. lg.	1
47	101143	Nut - Hex 1/4-20	1
48	100005	Washer - Plain 1/4 inch	1
49		Starter and Clutch Assembly (See figure 9)	1
50		Transmission Assembly (See figure 4)	1
51	101982	Screw - Hex hd 1/4-20 x 1 in. lg.	4
52	51795A	Brace - Gearcase top	1
53	55537	Brace - Gearcase bottom	1
54	53473	Crankcase - Bottom	1
55	58166A	Gasket - Crankcase bottom	1
56		Powerhead Assembly (See figure 5)	1
57	53487	Nameplate	1
58	53667	Instruction Plate	1

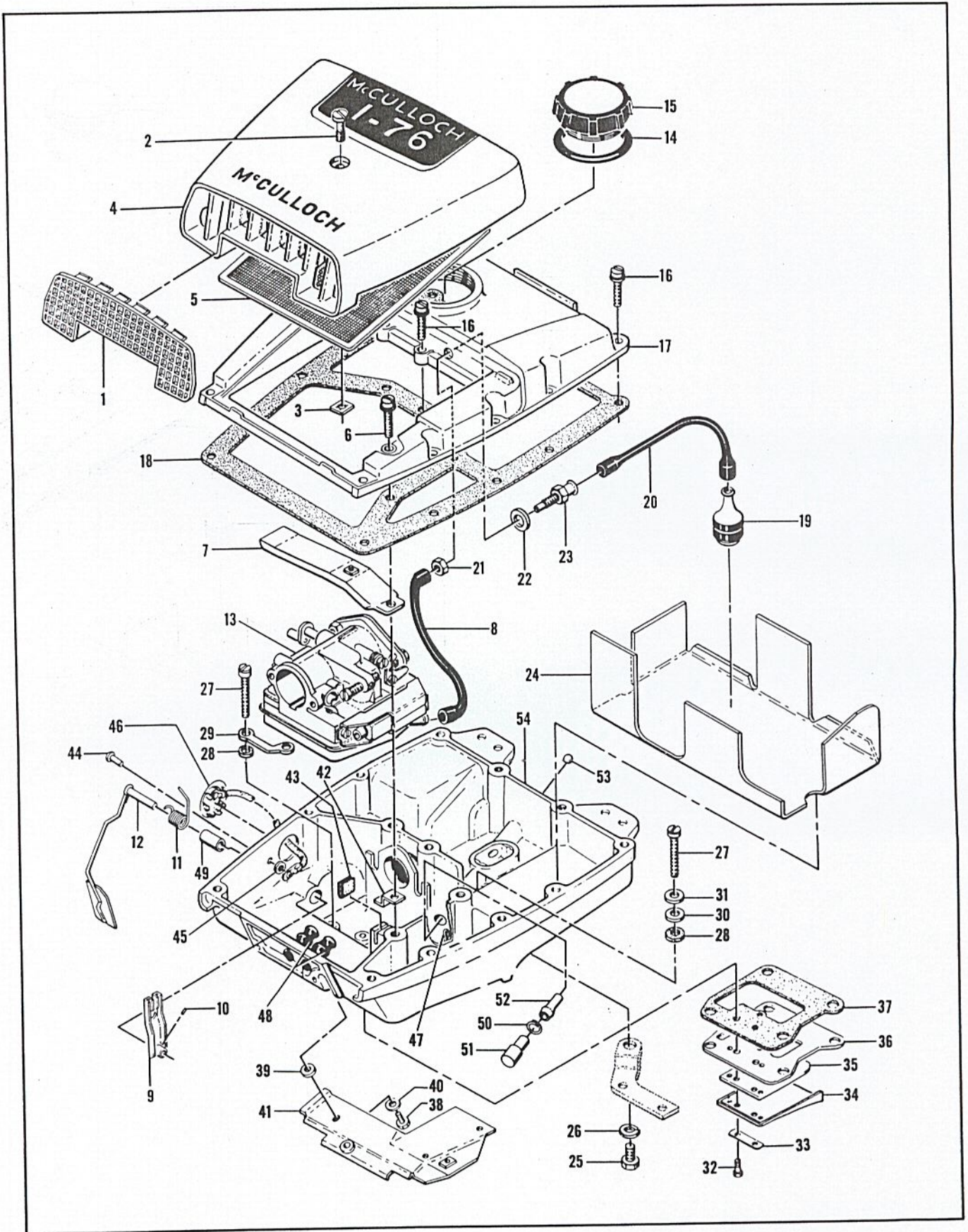


Figure 2. Fuel System Components

FIGURE 2 FUEL SYSTEM COMPONENTS

Index No.	Part Number	Nomenclature	Units Per Assy
1	55659	Grill - Air cleaner cover	1
	55626	Cover Assy - Air cleaner	1
2	55622	. Screw - Special air cleaner	1
3	103741	. Speednut	1
4		. Cover - Air cleaner	1
5	55498	Screen Assy - Air cleaner	1
6	104396	Screw - Pan hd 10-24 x 3/4 in. lg.	1
7	55634	Anchor Assy - Air cleaner.....	1
8	53678	Hose - Fuel line	1
9	55964A	Lever Assembly - Governor	1
10	104154	. Screw - Socket hd 8-32 x 1/4 in. lg.	1
11	55966	Spring - Governor arm	1
12	55958	Arm Assembly - Governor	1
13		McCulloch Carburetor and Primer (See figure 6).....	1
14	101348	"O" Ring	1
15	55934A	Cap Assembly - Fuel valve	1
16	104396	Screw - Pan hd 10-24 x 3/4 in. lg.	14
17	53682	Cover - Fuel tank	1
18	55627	Gasket - Fuel tank	1
19	53679	Pickup Assy - Fuel	1
20	53678	Hose - Fuel line	1
21	100640	Nut - Hex 1/4-28	1
22	50832A	Washer - Sealing	1
23	53675	Fitting - Fuel hose	1
24	53680	Liner - Fuel tank	1
25	102151	Screw - Hex hd 1/4-20 x 1/2 in. lg.	1
26	100246	Lockwasher - 1/4 inch	1
27	55948A	Screw - Fuel tank mtg	4
28	55636	Washer - Insulating	4
29	58376	Lockplate	1
30	103744	Washer - Sealing	2
31	102189	Washer - Plain #10	2
32	103740	Screw - Hex hd 8-32 x 7/8 in. lg.	2
33	51480	Lockplate	1
34	53686	Deflector - Fuel	1
35	48593	Valve - Reed.....	1
36	53685	Plate - Reed	1
37	58328	Gasket	1
38	102941	Screw - Hex hd 10-24 x 1/2 in. lg.	3
39	55636	Washer - Insulating	2
40	102189	Washer - Plain #10	3
41	55907A	Shroud Assy - Cylinder top	1
42	55647	Retainer - Pushrod	1
43	51394	Felt - Pushrod	1
	55805D	Bottom Assy - Fuel tank	1
44	104504	. Rivet	1
45	101871	. Washer - Plain	1
46	51396A	. Cover Assy - Adjustment hole	1
47	104310	. Pin - Cotter	1
48	51561A	. Grommet	2
49	103708	. Bushing	1
50	104813	. Clamp - Hose	1
51	104187	. Cap - Sleeve 5/16	1
52	57590	. Nipple	1
53	101203	. Ball - Steel 1/4 in. diameter	1
54		. Fuel Tank Bottom (Order Fuel Tank Bottom Assy #55805D)	1

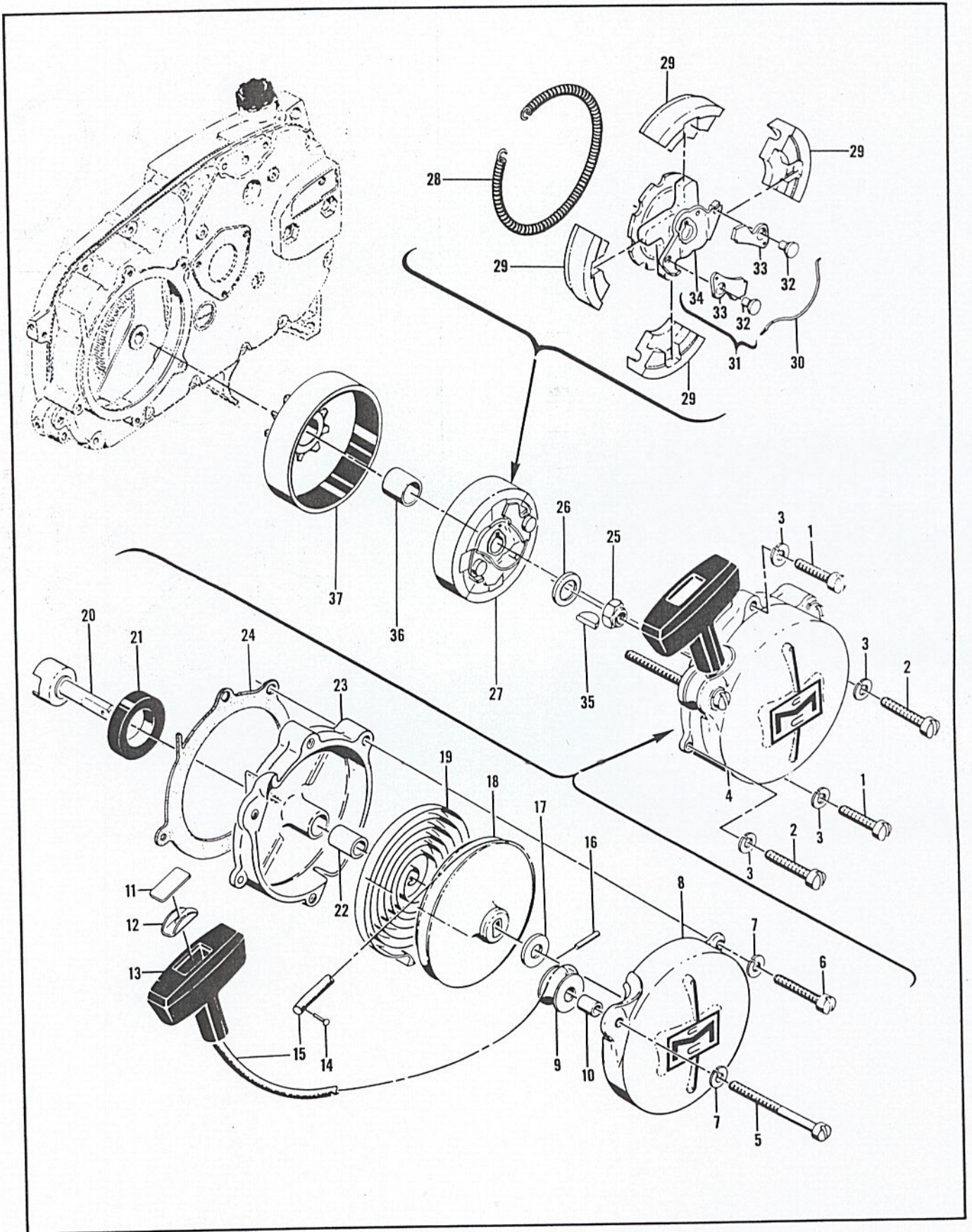


Figure 3. Starter and Clutch Assembly

#53486
7-62 ①

FIGURE 3 STARTER AND CLUTCH ASSEMBLY

Index No.	Part Number	Nomenclature	Units Per Assy
1	102212	Screw - Fil hd 10-24 x 1-3/4 in. lg	2
2	102135	Screw - Fil hd 10-24 x 2 in. lg	2
3	100240	Lockwasher - #10	4
4	55129C	Starter Assy	1
5	103840	. Screw - Fil hd 10-24 x 3-1/2 in. lg	1
6	102135	. Screw - Fil hd 10-24 x 2 in. lg	1
7	100240	. Lockwasher - #10	2
8	55024B	. Cover - Starter	1
9	51138	. Pulley - Starter rope	1
10	103536	. Bearing - Starter pulley	1
11	57232	. Plate - Starter handle	1
12	57231	. Cup - Starter handle	1
13	57230	. Handle - Starter	1
14	101136	. Rivet	1
15	28716	. Rope - Starter	1
16	103047	. Pin	1
17	104457	. Washer	1
18	55871	. Drum - Starter	1
19	51665	. Spring - Rewind	1
20	55110	. Shaft - Starter	1
21	104439	. Seal - Oil	1
	51649B	. Base Assembly - Starter	1
22	55591	. . Bearing - Starter base	1
23		. . Base - Starter	1
		(Order Starter Base Assy #51649B)	
24	55983	Gasket - Starter base	1
25	103746	Nut - Flex Loc 3/8-24	1
26	104349	Washer - 3/8 plain	1
27	53700	Clutch Assy	1
28	51468A	. Spring - Shoe retaining	1
29	53694	. Shoe - Clutch (set of four)	1
30	28766	. Spring - Starter pawl	1
31	53697	. Rotor and Pawl Assy - Clutch	1
32	28917	. . Pin - Starter pawl	1
33	28765	. . Pawl - Starter	1
34		. . Rotor Assy	1
		(Order Rotor and Pawl Assy #53697)	
35	103879	Key - Woodruff	1
36	55930	Bushing - Clutch drum	1
37	53703	Drum and Liner Assy - Clutch	1

FIGURE 4 TRANSMISSION ASSEMBLY

Index No.	Part Number	Nomenclature	Units Per Assy
1	51632B	Protector - Gearcase	2
2	101179	Nut - Hex 7/16-20	1
3	100593	Washer - 7/16 in.	1
4	51627	Plate - Chain guide	1
5	36791A	Sprocket - 7 tooth, 9/16 in. pitch	1
	36790A	Sprocket - 6 tooth, 9/16 in. pitch	alternate
	52069A	Sprocket - 7 tooth, 0.404 in. pitch	alternate
	36644A	Sprocket - 7 tooth, 1/2 in. pitch	alternate
	36020B	Sprocket - 6 tooth, 1/2 in. pitch	alternate
6	36019A	Shroud - Sprocket	1
7	100256	Key - Woodruff #6	1
8	55737	Spacer - Sprocket	1
9	102145	Screw - Pan hd 10-24 x 3/8 in. lg	2

This list is continued on page 9

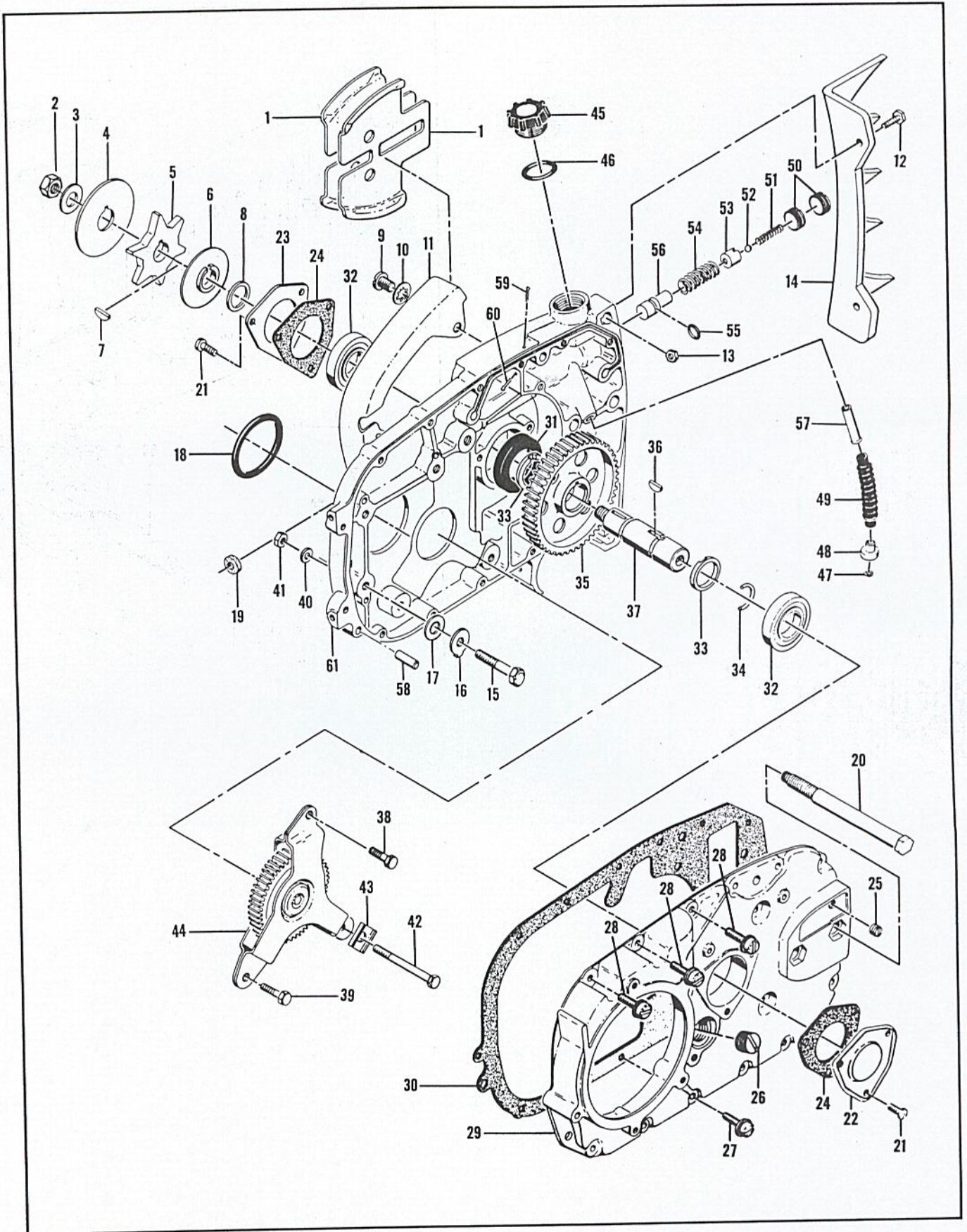


Figure 4. Transmission Assembly

FIGURE 4 TRANSMISSION ASSEMBLY - CONT.

Index No.	Part Number	Nomenclature	Units Per Assy
10	101194	Lockwasher	2
11	51634B	Guard - Chain	1
12	100882	Screw - Hex hd 1/4-20 x 3/4 in. lg	2
13	101143	Nut - Hex 1/4-20	2
14	51654	Spike	1
15	102128	Screw - Hex hd 1/4-20 x 1-1/4 in. lg	3
16	36306	Plate - Lock	3
17	100005	Washer - Plain 1/4 in.	3
18	104535	"O" Ring	1
19	55449A	Washer - Felt	1
	55916A	Transmission Assembly (3.6:1 ratio)	1
20	51631A	. . . Bolt - Bar mounting	2
21	104835	. . . Screw - Pan hd 10-24 x 1/2 in. lg	6
22	55736	. . . Cover - Shaft	1
23	36138	. . . Retainer - Bearing	1
24	51621	. . . Gasket	2
25	101864	. . . Plug - Pipe 1/16-27	1
26	104218	. . . Plug - Pipe 3/8-18	1
27	103464	. . . Screw - 10-24 x 3/4 in. lg (SEMS)	11
28	103947	. . . Screw - 10-24 x 1 in. lg (SEMS)	3
29	55914	. . . Cover - Gearcase	1
30	55913	. . . Gasket - Transmission cover	1
31	104298	. . . Seal - Oil	1
32	101039	. . . Bearing	2
33	55715	. . . Spacer - Gear	2
	55920	. . . Shaft Assy - Sprocket (3.6:1 ratio)	1
34	104451	. . . Ring - Retaining	1
35	55915	. . . Gear - Sprocket drive	1
36	55953	. . . Key - Woodruff	1
37	57489	. . . Shaft - Sprocket	1
38	103280	. . . Screw - Hex hd 1/4-28 x 5/8 in. lg	1
39	103976	. . . Screw - Hex hd 1/4-28 x 7/16 in. lg	1
40	100004	. . . Washer - Plain 1/4 in.	2
41	100640	. . . Nut - Hex 1/4-28	2
42	104351	. . . Screw - Hex hd 1/4-28 x 1-13/32 in. lg	1
43	55539	. . . Lockplate - Idler yoke	1
44	55917A	. . . Idler Gear and Yoke Assy (3.6:1 ratio)	1
45	57129	. . . Cap - Filler	1
46	101148	. . . "O" Ring	1
	51505	. . . Weight Assy	1
47	51506	. . . Screen - Oil	1
48	51509	. . . Weight - Oil	1
49	28007	. . . Hose	1
50	51755	. . . Plug - Oiler valve	2
51	51944	. . . Spring	1
52	100549	. . . Ball - 3/16 in. dia	1
53	57721	. . . Body - Oiler	1
54	19236	. . . Spring - Oiler	1
	51472	. . . Piston Assy - Oiler	1
55	101056	. . . "O" Ring	1
56	36126	. . . Piston - Oiler	1
	55879A	. . . Gearcase Assy	1
57	51982A	. . . Valve Assy - Check	1
58	100993	. . . Pin - Dowel	1
59	57995	. . . Pin - Gearcase vent	1
60	100010	. . . Pin - Cotter	1
61		. . . Gearcase	1
		(Order Gearcase Assy #55879A)	

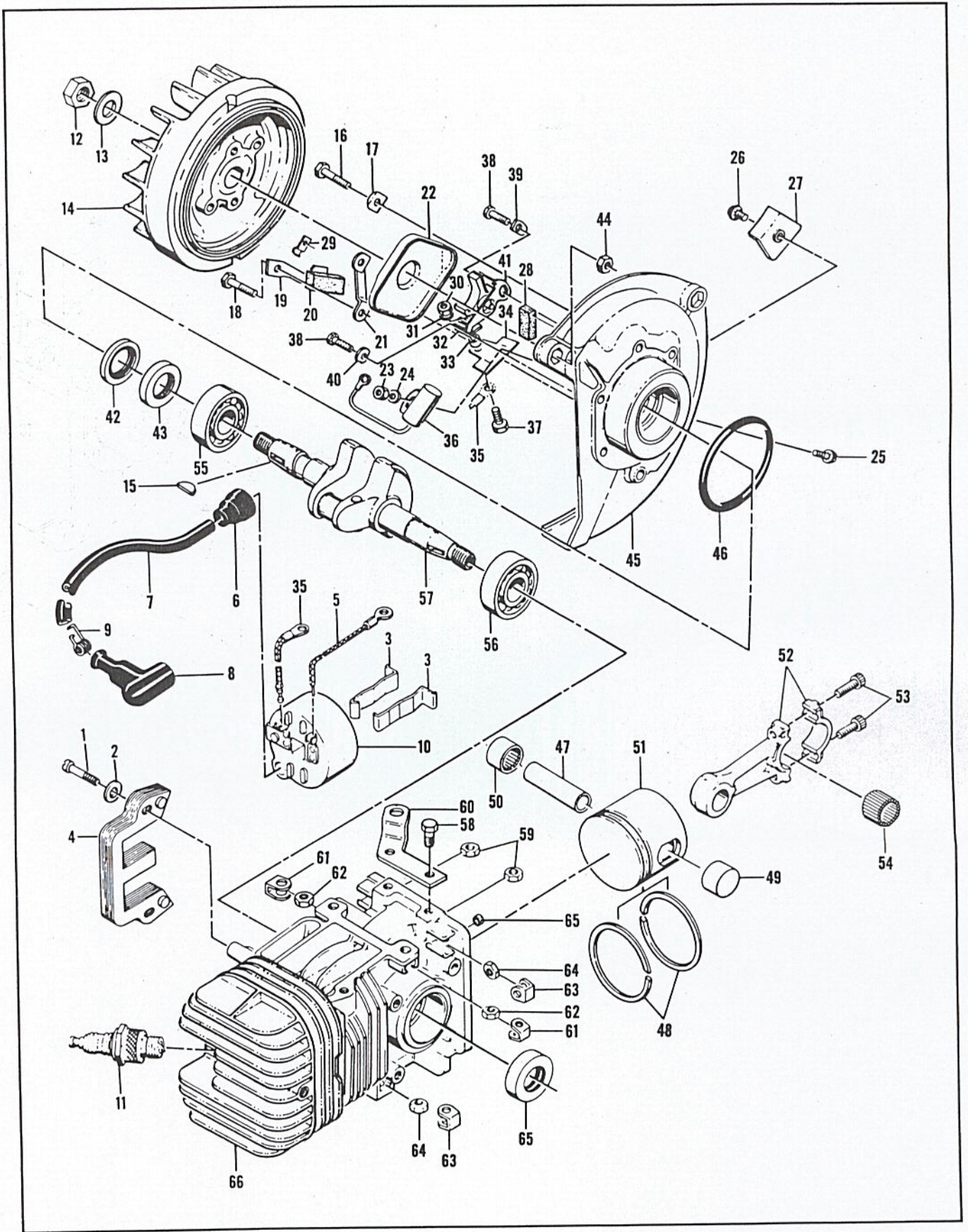


Figure 5. Powerhead Assembly

#53486
7-62 ①

FIGURE 5. POWERHEAD ASSEMBLY

Index No.	Part Number	Nomenclature	Units Per Assy
1	101965	Screw - Fil hd 10-24 x 7/8 in. lg	2
2	100003	Washer - Plain #10	2
3	51253	Retainer - Coil	2
4	51251	Lamination Assy - Coil	1
	55949A	Coil and Terminal Assy	1
5	101883	. Wire Assy - Ground	1
6	55617	. Nipple - Spark plug wire	1
7	52547	. Wire Assy - Spark plug	1
8	55060	. . Boot - Spark plug	1
9	55061	. . Connector - Spark plug wire	1
10		. Coil Assy (Order Coil and Terminal Assy #55949A)	1
11		Spark Plug - 14 mm	1
12	101179	Nut - Hex 7/16	1
13	101270	Washer - Special	1
14	57825	Flywheel Assy	1
15	103879	Woodruff Key	1
16	102763	Screw - Hex hd 10-24 x 3/4 in. lg	2
17	36388	Lockplate	1
18	102763	Screw - Hex hd 10-24 x 3/4 in. lg	4
19	57815	Strap - Seal	1
20	50664	Seal - Breaker box drain	1
21	55977	Clip - Breaker box cover	2
22	55766B	Cover - Breaker box	1
	57768A	Crankcase Cover Assembly	1
23	100955	. Nut - Hex 8-32	1
24	100080	. Washer - Plain #8	1
25	104733	. Screw - 8-32 x 1/2 in. lg (SEMS)	1
26	103061	. Screw - 8-32 x 3/8 in. lg (SEMS)	1
27	57829	. Clamp - Ignition wire	1
28	54184	. Wiper - Felt	1
29	104230	. Speednut	1
30	104551	. Nut - Hex 8-32	1
31	104553	. Lockwasher #8	1
32	57770A	. Insulator - Breaker spring	1
33	57769	. Insulator - Ignition screw	1
34	55782	. Insulator	1
35	57766	. Wire Assembly - Primary	1
36	50074	. Condenser	1
37	103748	. Screw - 8-32 x 1/2 in. lg	1
38	104733	. Screw - 8-32 x 1/2 in. lg (SEMS)	2
39	57767A	. Lockplate	1
40	55788C	. Washer - Breaker retainer	1
41	57765	. Breaker Assembly	1
42	57897	. Seal - Oil	1
43	57898	. Seal - Oil	1
44	101326	. Nut - 10-24	1
45		. Cover (Order Crankcase Cover Assy #57768A)	1
46	104523	“O” Ring	1
47	48859	Pin - Piston	1
	59582	Piston - Assy - Std	1
48	48978	. Ring Set - Piston Std (2 rings)	1
49	104378	. Bearing - Needle (Closed end)	1
50	101206	. Bearing - Needle	1
51		. Piston (Order Piston Assy #59582)	1
52	48905	Connecting Rod Assy	1
53	104589	. Screw - Socket hd 10-32 x 9/16 in. lg	2
54	102742	. Roller - Needle	24
55	100824	Bearing - Ball	1
56	104490	Bearing - Ball	1
57	58128	Crankshaft	1
58	102762	Screw - 10-24 x 1/2 in. lg	2
59	101326	Nut - Hex 10-24	2

This list is continued on page 13

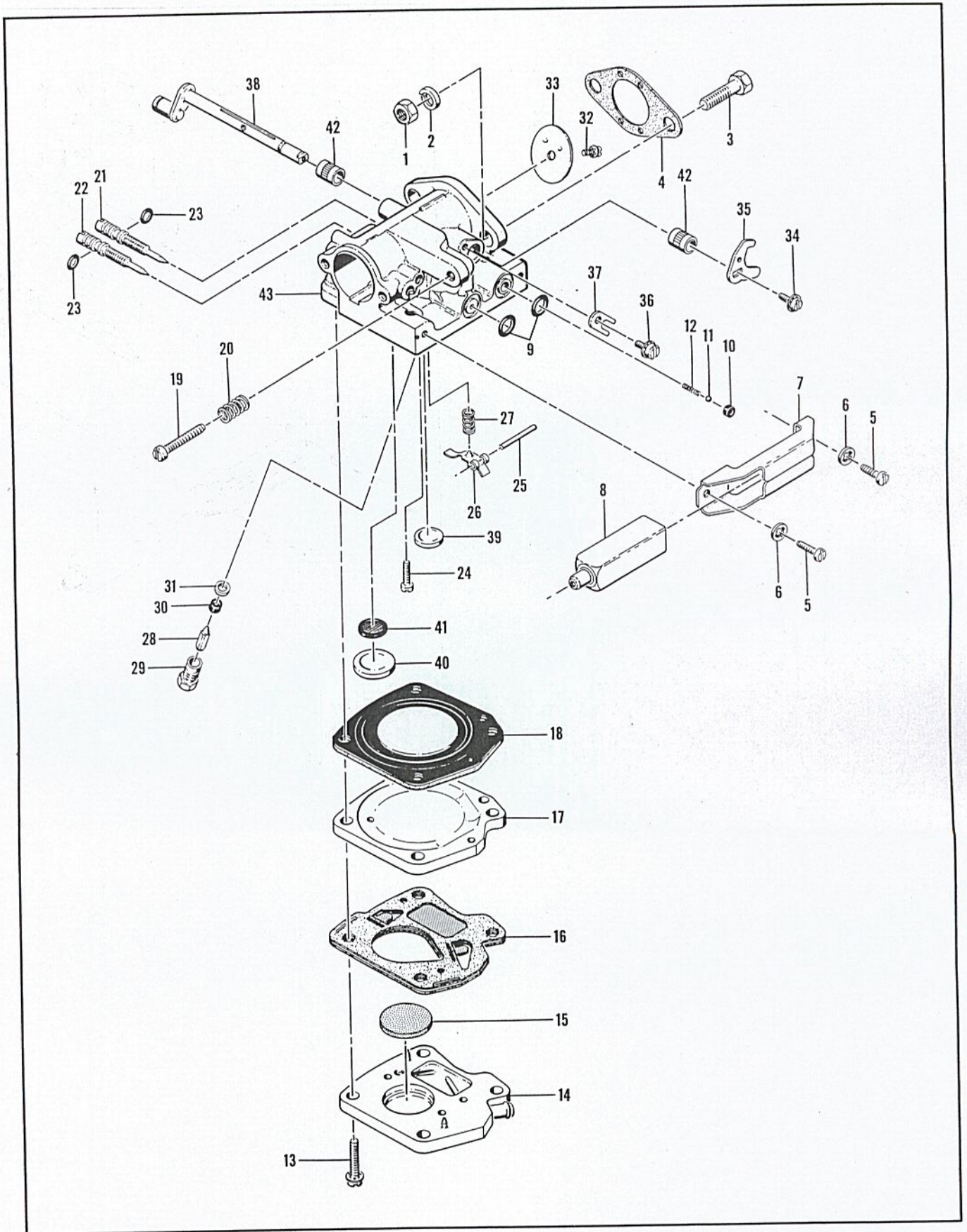


Figure 6. McCulloch Carburetor Assembly

FIGURE 5. POWERHEAD ASSEMBLY - CONT.

Index No.	Part Number	Nomenclature	Units Per Assy
60	53271	Bracket - Fuel tank	1
	59564	Cylinder Assembly - Crankcase	1
61	28053	. Retainer - Nut	2
62	101326	. Nut - Hex 10-24	2
63	18556A	. Retainer - Nut	6
64	101143	. Nut - Hex 1/4-20	6
65	104486	. Seal - Oil	1
66		. Cylinder - Crankcase (Order Assy #59564)	1

FIGURE 6. McCULLOCH CARBURETOR ASSEMBLY

Index No.	Part Number	Nomenclature	Units Per Assy
1	103242	Nut - Hex 1/4-20	2
2	101476	Washer - Lock 1/4 external	2
3	100882	Screw - Hex hd 1/4-20 x 3/4 in. lg	2
4	51161C	Gasket - Carburetor	1
	53580	Carburetor Assembly - McCulloch	1
5	104769	. Screw - Pan hd 6-32 x 3/8 in. lg	2
6	103556	. Lockwasher - #6 internal	2
7	53440	. Bracket - Primer mounting	1
8	53449	. Primer Assembly	1
9	101056	. "O" Ring	2
10	59480	. Seat - Primer valve	1
11	100302	. Ball - Steel 1/8 in. dia	1
12	28754	. Spring - Primer	1
13	104520	. Screw - 10-24 x 7/8 in. lg (SEMS)	4
14	57667	. Body Assembly - Fuel pump	1
15	57277	. Filter - Fuel pump	1
16	57274A	. Diaphragm and Gasket Assy - Fuel pump	1
17	57272A	. Plate - Carburetor diaphragm	1
18	55067C	. Diaphragm - Carburetor	1
19	55397	. Screw - Fil. hd 8-36 x 15/16 in. lg	1
20	51705	. Spring - Idle screw	1
21	53312	. Needle - Idle adjustment	1
22	53314	. Needle - Main adjustment	1
23	104001	. "O" Ring	2
24	104164	. Screw - Pan hd 4-40 x 1/4 in. lg	1
25	104305	. Pin - Lever control	1
26	55688	. Lever - Inlet control	1
27	57172	. Spring - Inlet control lever	1
28	55476	. Needle - Valve	1
29	55475	. Body - Needle valve	1
30	55474	. Seat - Needle valve	1
31	55689	. Washer - Needle valve	1
32	104814	. Screw - 4-40 x 1/4 in. lg (SEMS)	1
33	53309	. Plate - Throttle	1
34	104814	. Screw - 4-40 x 1/4 in. lg (SEMS)	1
35	53582	. Arm - Throttle shaft	1
36	104570	. Screw - 8-32 x 1/4 in. lg (SEMS)	1
37	55082	. Clip - Shaft	1
38	55077A	. Shaft and Roller Assy	1
	53592	. Body Assembly - Carburetor	1
39	102758	. Plug - Expansion 1/2 in. dia	1
40	104407	. Plug - Expansion 1 in. dia	1
41	55690B	. Seal - Capillary	1
42	55062A	. Bushing	2
43		. Carburetor Body (Order Assy #53592)	1

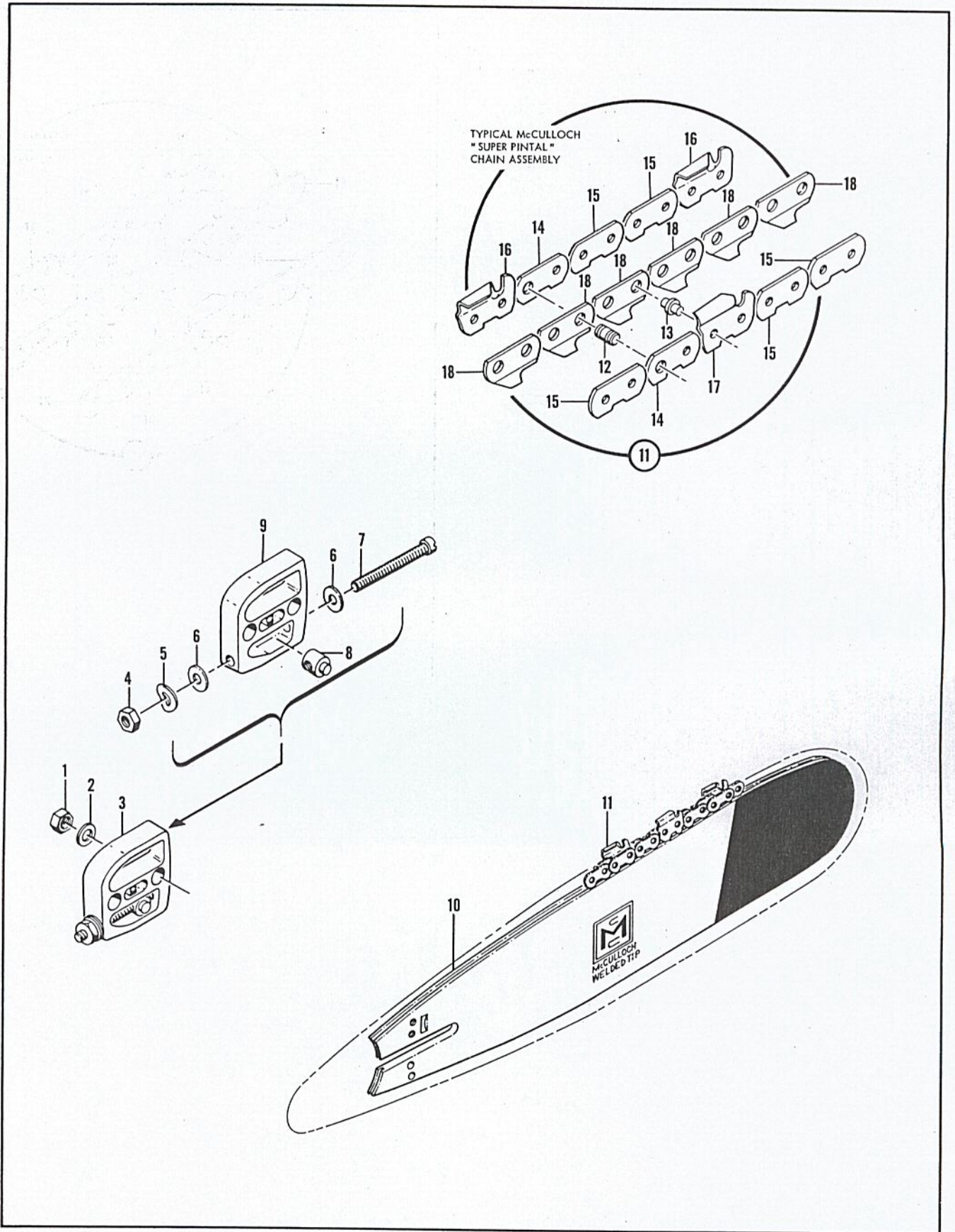


Figure 7. Lockplate Adjusting Assembly, Bar and Chain

FIGURE 7 LOCKPLATE ADJUSTING ASSEMBLY, BAR AND CHAIN

Index No.	Part Number	Nomenclature	Units Per Assy
1	103729	Nut - Hex 3/8-24	2
2	100393	Washer - 3/8 inch	2
3	52211D	Lockplate Adjusting Assembly	1
4	100640	. Nut - Hex 1/4-28	1
5	102813	. Washer - Spring	1
6	102843	. Washer	2
7	103919	. Screw - Fil hd 1/4-28 x 2-1/2 in. lg	1
8	52207C	. Nut - Adjusting	1
9	52206B	. Lockplate	1
10	51403B	Bar - 12 inch	1
	51405A	Bar - 18 inch (alternate)	1
	51407A	Bar - 24 inch (alternate)	1
	51409A	Bar - 30 inch (alternate)	1
11		Typical McCulloch "SP Series" Chain Assy	1
12		. Master Pin	
13		. Shoulder Rivet	
14		. Master Link	
15		. Side Link	
16		. Cutter - L.H.	
17		. Cutter - R.H.	
18		. Center Link	

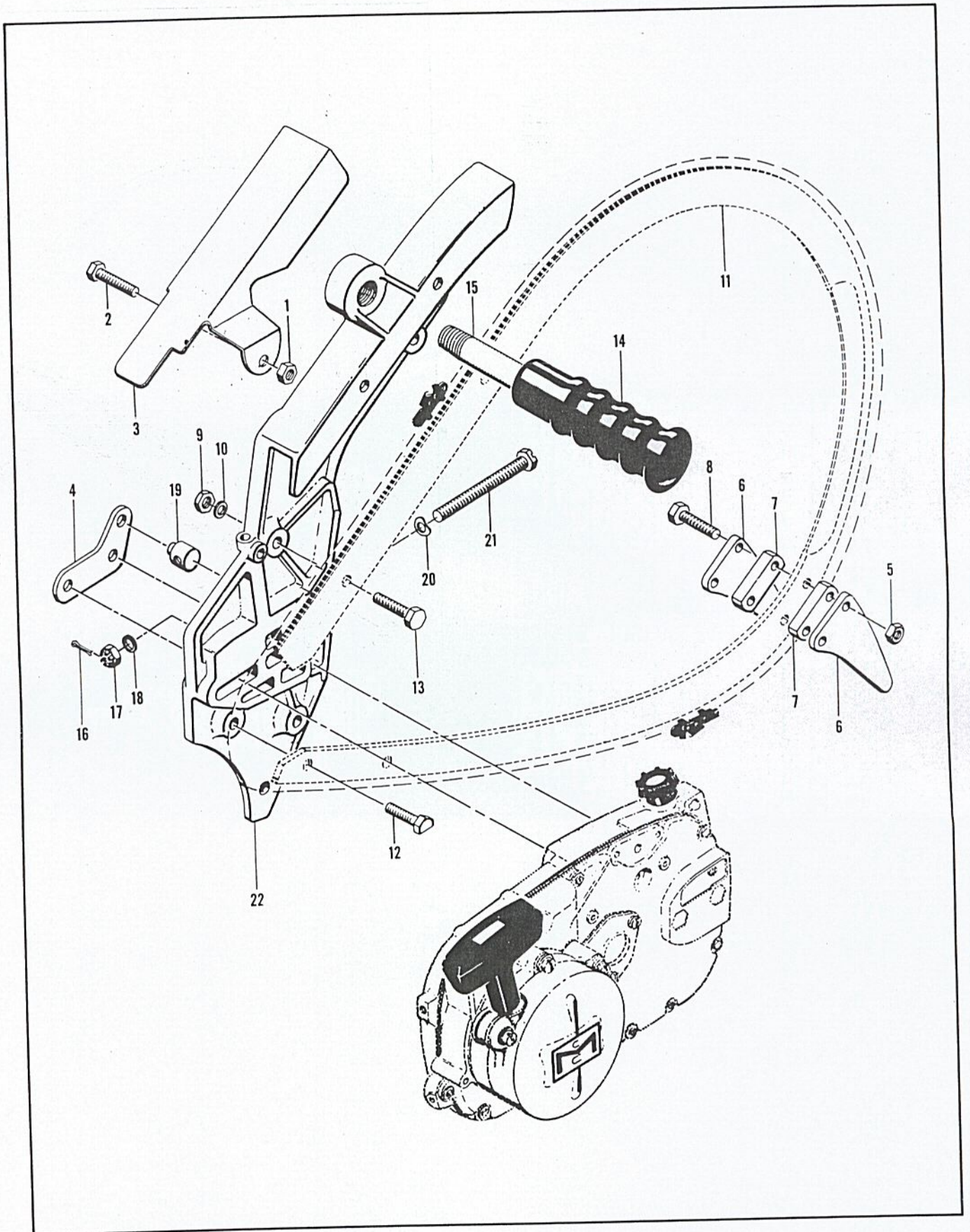


Figure 8. Plunge Bow Saw Assembly

FIGURE 8 PLUNGE BOW SAW ASSEMBLY

Index No.	Part Number	Nomenclature	Units Per Assy
	55152	Plunge Bow Saw Assy (less track)	1
1	*101143	. Nut - Hex 1/4-20	1
2	*102128	. Screw - Hex hd 1/4-20 x 1-1/4 in. lg	1
3	*51889	. Guard - Chain (Bow saw)	1
4	*51674	. Plate - Adjusting	1
5	*101143	. Nut - Hex 1/4-20	2
6	*28256	. Spike	2
7	*28259	. Spacer	2
8	*102130	. Bolt - Hex hd 1/4-20 x 1-1/2 in. lg	2
9	*101143	. Nut - Hex 1/4-20	4
10	*100004	. Washer - Plain 1/4 in	4
11		. Track (available through dealers)	
12	*51995	. Bolt - Special 1/4-20 x 1 in. lg	1
13	*101982	. Bolt - Hex hd 1/4-20 x 1 in. lg	3
	*19502	. Auxiliary Handle Assy	1
14	*18207A	. . Grip - Handle	1
15	*19476	. . Auxiliary Handle	1
16	101495	. Pin - Cotter 0.09 in. dia x 1/2 in. lg	1
17	102022	. Nut - Castle 5/16-24	1
18	100007	. Washer - Plain 5/16 in.	1
19	19708	. Nut - Adjusting	1
20	24260	. Spring - Thrust	1
21	102193	. Screw - Adjusting	1
22	51672	. Body Assy	1

*Contained in loose parts package.

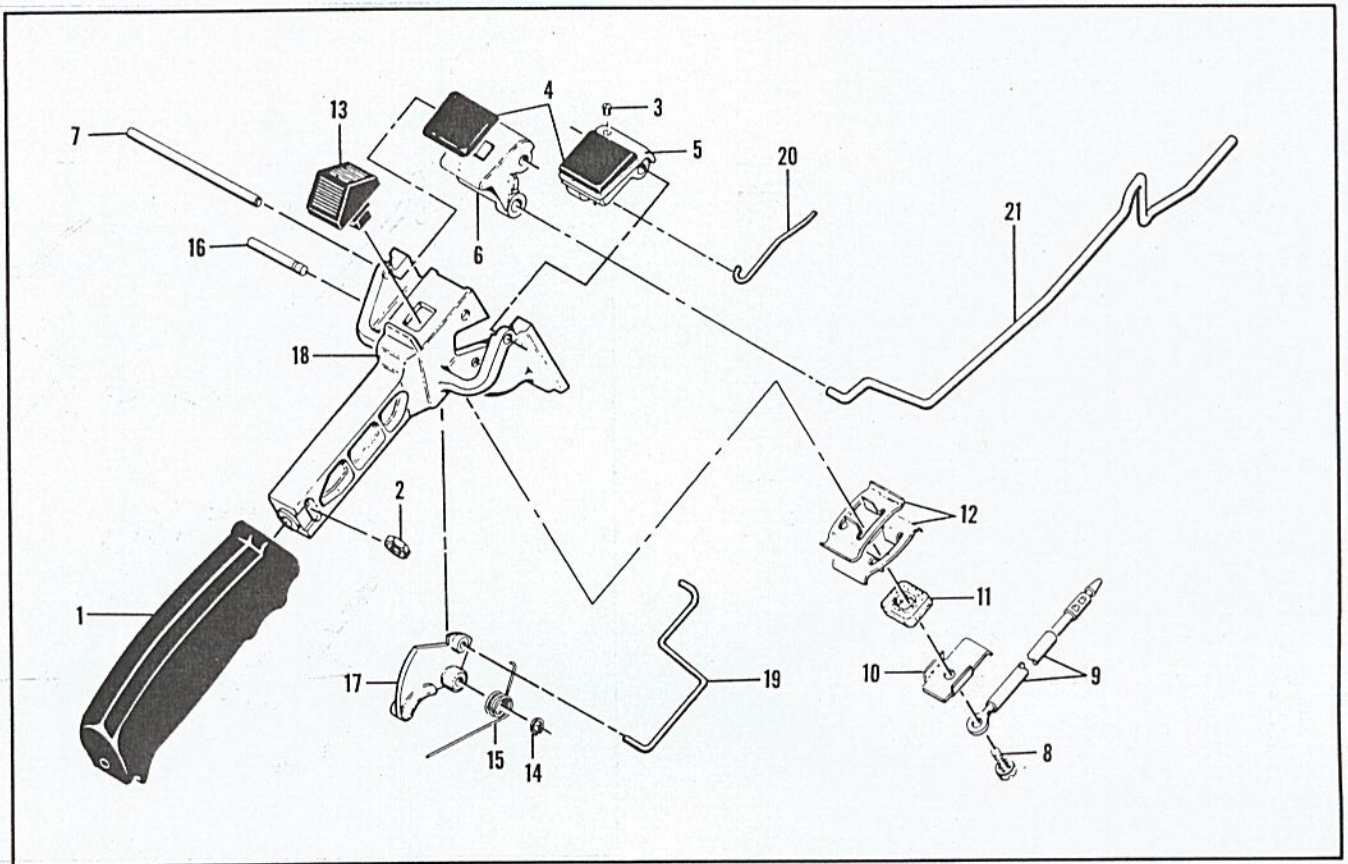


Figure 9. Handle and Control Assembly

FIGURE 9 HANDLE AND CONTROL ASSEMBLY

Index No.	Part Number	Nomenclature	Units Per Assy
	53245	Handle and Control Assembly	1
1	55624A	. Grip - Handle	1
2	102067	. Nut - Hex 10-24	1
3	104484	. Screw - Set 8-32 x 1/4 in. lg	1
4	55670	. Grommet	2
5	55968A	. Button - Primer	1
6	55969A	. Button - Oiler	1
7	51344A	. Shaft - Oiler and Primer Buttons	1
8	103061	. Screw - Fil hd 8-32 x 3/8 in. lg (SEMS)	1
9	51492A	. Wire Assembly - Primary	1
10	51279	. Contact - Switch	1
11	51555	. Insulator - Switch	1
12	51554A	. Detent - Switch	2
13	57718	. Button - Switch	1
14	104501	. Retainer - Trigger pin	1
15	55674	. Spring - Trigger return	1
16	50507	. Pin - Trigger	1
17	55616	. Trigger	1
18	55986	. Handle	1
19	53590	Pushrod - Throttle	1
20	53583	Pushrod - Primer	1
21	57719	Pushrod - Oiler	1

TOOLS AND ACCESSORIES

Part Number	Nomenclature
*51445	Wrench and Screwdriver Combination
*56625A	Chain Maintenance Manual
14168A	Wrench Spark plug
18413A	Gauge - Feeler
*53485	Owner's Manual of Operating Instructions

*Items furnished with each saw.

OVERSIZE PISTON ASSEMBLY

Part Number	Nomenclature
59583	Piston Assembly - 0.010 oversize
48934	. . . Ring - Piston (set of 2) 0.010 oversize
59584	Piston Assembly - 0.020 oversize
59587	. Ring - Piston (set of 2) 0.020 oversize
59585	Piston Assembly - 0.030 oversize
59586	. Ring - Piston (set of 2) 0.030 oversize