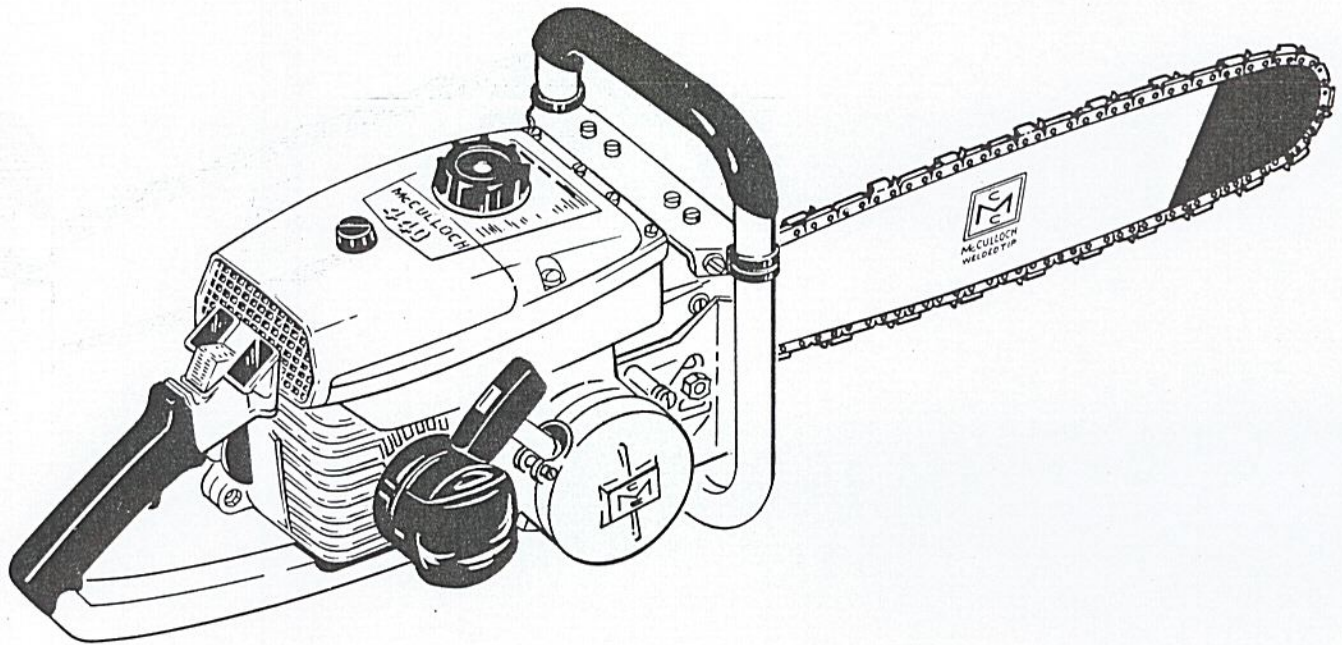


ILLUSTRATED PARTS LIST

JULY 1963



The following pages contain an illustrated parts list for the Model 440 Chain Saw. Due to small differences between saws, it is important that the Serial Number of your saw be included whenever spare parts are ordered. This will assure receiving the proper parts from your dealer.

The McCulloch Corporation reserves the right to modify or change specifications without (1) prior notification or (2) obligation including the obligation to back-fit or supply back-fit, components for units previously shipped from the factory.

	Page
Figure 1. Engine Exploded View - General	2
Figure 2. Fuel System Components	4
Figure 3. Starter and Clutch Assemblies	6
Figure 4. Oiler Housing Sprocket, Clutch Drum and Bearing Assemblies	8
Figure 5. Powerhead Assembly	10
Figure 6. Carburetor and Fuel Collector Assemblies	12
Figure 7. Handle and Control Assembly	14
Figure 8. Bar and Chain	15



McCULLOCH CORPORATION
 6101 West Century Boulevard,
 Los Angeles 45, California

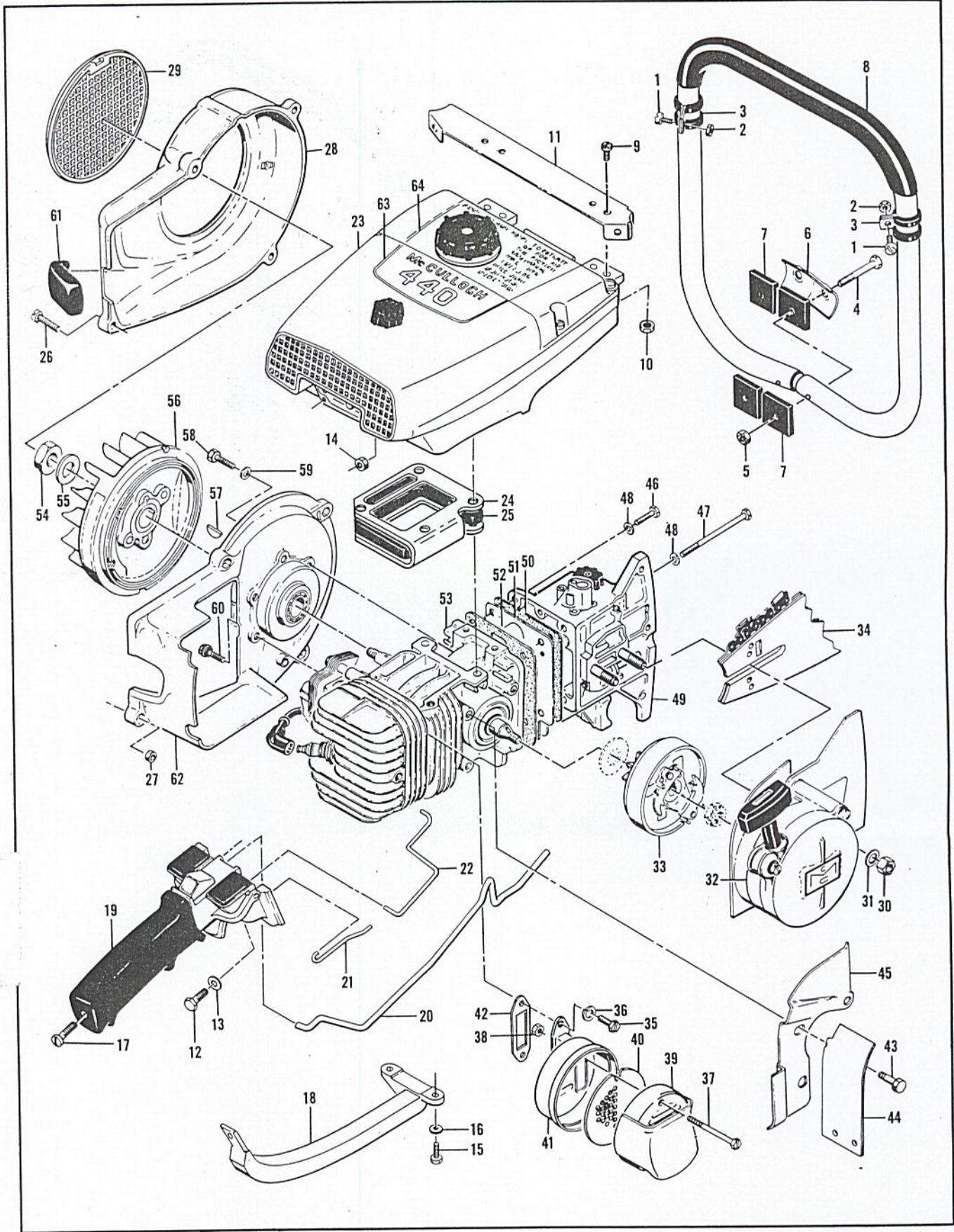


Figure 1. Engine Exploded View - General

#60761
7-63 ①

FIGURE 1. ENGINE EXPLODED VIEW—GENERAL

Index No.	Part Number	Nomenclature	Units Per Assy
1	102763	Screw - Hex hd 10-24 x 3/4 in. lg	2
2	100239	Nut - Hex 10-24	2
3	103923	Clamp	2
4	102125	Screw - Hex hd 1/4-20 x 1-3/4 in. lg	2
5	101143	Nut - Hex 1/4-20	2
6	51362	Clamp - Frame	1
7	50062	Insulator	4
8	60749	Frame and Grip Assy	1
9	104393	Screw - Pan hd 10-24 x 3/8 in. lg	4
10	101191	Nut - Hex 10-24	4
11	60757	Brace - Frame	1
12	102761	Screw - Hex hd 10-24 x 7/8 in. lg	2
13	102189	Washer - Plain #10	2
14	102067	Nut - Hex 10-24	2
15	102121	Screw - Hex hd 1/4-20 x 7/8 in. lg	2
16	100005	Washer - Plain 1/4 in.	2
17	104397	Screw - Pan hd 10-24 x 7/8 in. lg	1
18	60744	Brace - Handle	1
19		Handle and Control Assy (See figure 7)	1
20	51857B	Pushrod - Oiler	1
21	53583A	Pushrod - Primer	1
22	53590	Pushrod - Throttle	1
23		Fuel System Components (See figure 2)	1
24	53768	Gasket - Fuel tank and insulator	1
25	53684	Insulator	1
26	104815	Screw - Hex hd 10-24 x 7/8 in. lg (SEMS)	4
27	101191	Nut - Hex 10-24	2
28	61133	Housing - Fan	1
29	55615	Guard - Sawdust	1
30	103729	Nut - Hex 3/8-24	2
31	100006	Washer - Plain 3/8 in.	2
32		Starter Assy (See figure 3)	1
33		Clutch, Drum and Bearing Assy (See figure 3)	1
34		Bar and Chain Assy (See figure 8)	1
35	102388	Screw - Hex hd 10-24 x 5/8 in. lg	2
36	103100	Lockwasher - #10 internal	2
	51966	Muffler Assy	1
37	103361	Screw - Fil hd 10-24 x 1-5/8 in. lg	2
38	101191	Nut - Hex 10-24	2
39	51979	Top Assy - Muffler	1
40	51968	Baffle - Muffler	1
41	51975	Bottom Assy - Muffler	1
42	53652	Gasket - Muffler	1
43	104133	Screw - 1/4-20 x 5/8 in. lg (SEMS)	3
44	51990A	Shield - Muffler	1
45	55255	Jacket - Cylinder	1
46	103258	Screw - Hex hd 1/4-20 x 1-1/8 in. lg	2
47	102127	Screw - Hex hd 1/4-20 x 3-1/4 in. lg	2
48	100005	Washer - Plain 1/4 in.	4
49		Oiler Housing Assy (See figure 4)	1
50	60252	Gasket - Oiler housing	1
51	60251	Cover - Crankcase bottom	1
52	48909A	Gasket - Crankcase bottom cover	1
53		Powerhead Assy (See figure 5)	1
54	101179	Nut - Hex 7/16 in.	1
55	101270	Washer - Special	1
56	57825	Flywheel Assy	1
57	100199	Key - Woodruff	1
58	102289	Screw - Hex hd 10-24 x 3/4 in. lg	4
59	102189	Washer - Plain #10	3
60	55494	Screw - Sealing #10	2
61	57565	Cover Assy - Spark plug	1

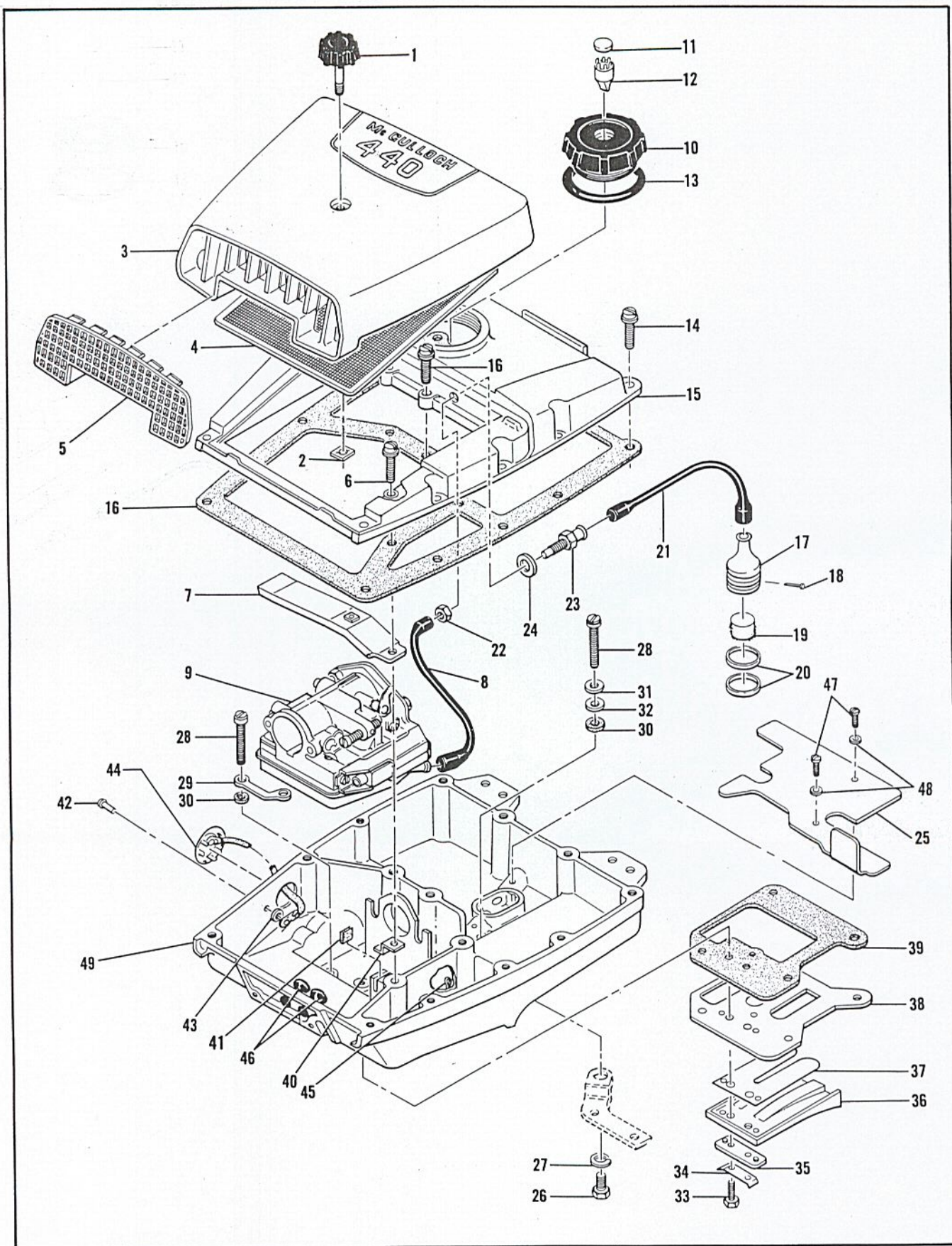


Figure 2. Fuel System Components

FIGURE 1. ENGINE EXPLODED VIEW—GENERAL—CONT.

Index No.	Part Number	Nomenclature	Units Per Assy
62		Crankcase Cover Assy (See figure 5)	1
63	60754	Nameplate	1
64	60425	Instruction Plate	1

FIGURE 2. FUEL SYSTEM COMPONENTS

Index No.	Part Number	Nomenclature	Units Per Assy
	60427	Cover Assy - Air cleaner	1
1	60243	. Knob - Air cleaner cover	1
2	103741	. Speednut	1
3		. Cover - Air cleaner (Order Assy #60427)	1
4	55497	Screen - Air cleaner	1
5	55659	Grill - Air cleaner cover	1
6	104396	Screw - Pan hd 10-24 x 3/4 in. lg	1
7	55634	Anchor Assy - Air cleaner	1
8	53678	Hose - Fuel line	1
9		McCulloch Carburetor and Fuel Collector Assys (See figure 6)	1
10	55934B	Cap Assy - Fuel	1
11	55063	. Filter - Fuel cap	1
12	53766	. Valve - Check	1
13	101348	"O" Ring - Fuel cap	1
14	104396	Screw - Pan hd 10-24 x 3/4 in. lg	14
15	53682	Cover - Fuel tank	1
16	55627A	Gasket - Fuel tank	1
17	53679A	Pickup Assy - Fuel	1
18	104959	. Pin - Fuel pickup	1
19	104958	. Filter - Fuel pickup	1
20	110065	. Ring - Fuel pickup	2
21	53678	Hose - Fuel line	1
22	100640	Nut - Hex 1/4-28	1
23	53675	Fitting - Fuel hose	1
24	50832A	Washer - Sealing	1
25	53837A	Liner - Fuel tank	1
26	102151	Screw - Hex hd 1/4-20 x 1/2 in. lg	1
27	100246	Lockwasher	1
28	55948A	Screw - Fuel tank	4
29	58376	Lockplate	1
30	55636	Washer - Insulating	4
31	102189	Washer - Plain #10	2
32	103744	Washer - Sealing	2
33	103740	Screw - Hex hd 8-32 x 7/8 in. lg	2
34	51480	Lockplate	1
35	57658	Clamp - Reed	1
36	57654	Deflector - Fuel	1
37	58399	Valve - Reed	1
38	53685	Plate - Reed	1
39	58328A	Gasket	1
40	55647	Retainer - Throttle rod	1
41	51394	Felt- Pushrod	1
	55805E	Bottom Assy - Fuel tank	1
42	104504	. Rivet	1
43	101871	. Washer - Plain	1

#60761
7-63 ①

This list is continued on page 7

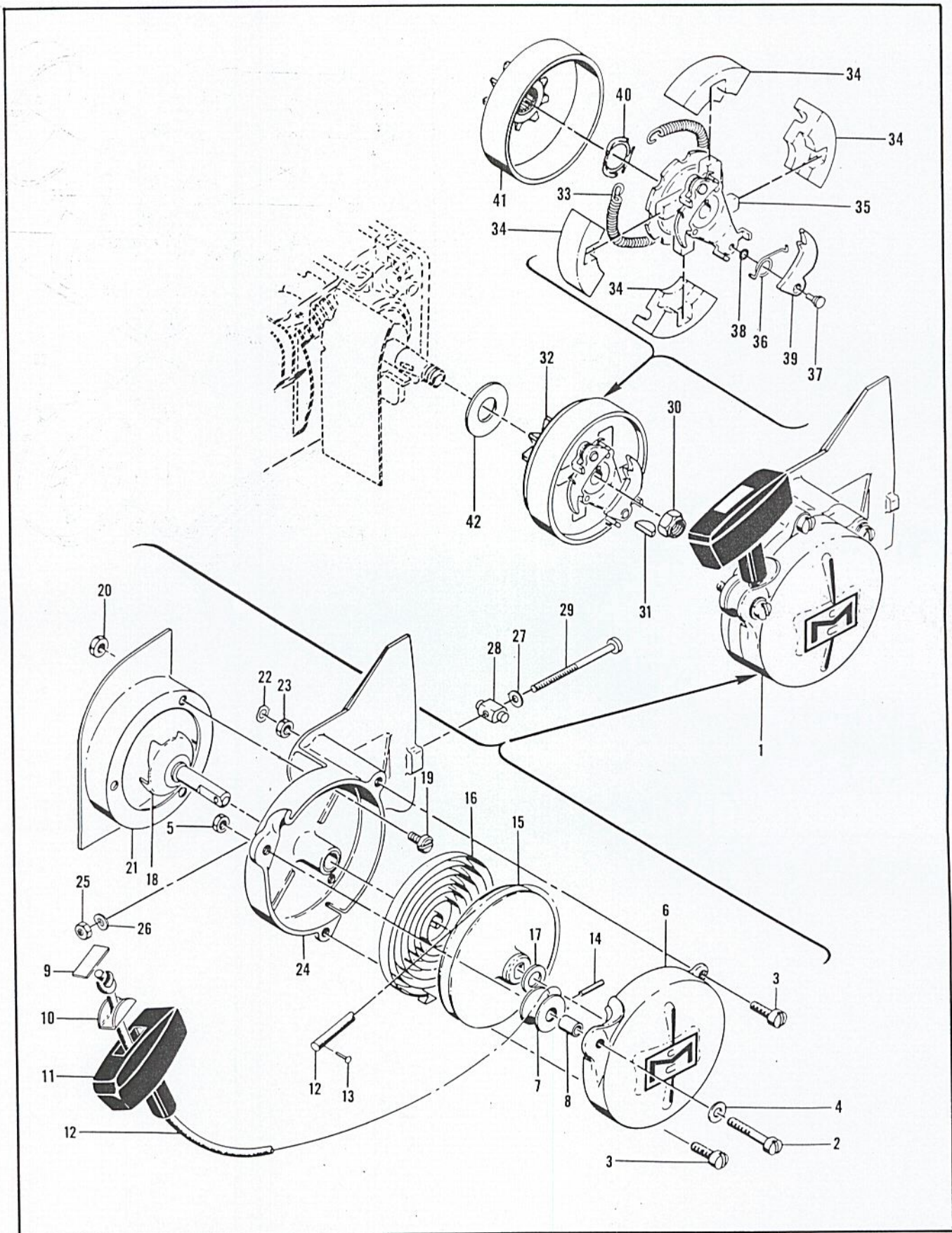


Figure 3. Starter and Clutch Assemblies

#60761
7-63 ①

FIGURE 2. FUEL SYSTEM COMPONENTS — CONT.

Index No.	Part Number	Nomenclature	Units Per Assy
44	51396A	Cover Assy - Adjustment hole	1
45	104310	Pin - Cotter	1
46	60237	Grommet	2
47	104769	Screw - Pan hd 6-32 x 3/8 in. lg	2
48	100296	Washer - Plain #6	2
49		Bottom - Fuel tank (Order Fuel Tank Bottom Assy #55805E)	1

FIGURE 3. STARTER AND CLUTCH ASSEMBLIES

Index No.	Part Number	Nomenclature	Units Per Assy
1	53844	Starter Assy	1
2	101284	Screw - Fil hd 10-24 x 1-1/8 in. lg	1
3	103859	Screw - Fil hd 10-24 x 3/4 in. lg	2
4	102189	Washer	1
5	101191	Nut - Hex 10-24	2
6	55024B	Cover - Starter	1
7	51138	Pulley - Starter rope (Requires Bearing P/N 103536)	1
8	103536	Bearing - Pulley (Required for Pulley P/N 51138)	1
9	57232	Plate - Starter handle	1
10	57231	Cup - Starter handle	1
11	57230	Handle - Starter	1
12	28716	Rope - Starter	1
13	101136	Rivet	1
14	103047	Pin - Roll	1
15	55871	Drum - Starter	1
16	51665	Spring - Starter rewind	1
17	104457	Washer	1
18	51923	Shaft Assy - Starter	1
19	104071	Screw - Pan hd 8-32 x 5/16 in. lg	3
20	100955	Nut - Hex 8-32	3
21	51459A	Cover - Sawdust shield	1
22	28935	Retainer	1
23	101191	Nut - Hex 10-24	1
24	57660	Starter Base Assy	1
25	100640	Nut - Hex 1/4-28	1
26	102813	Washer - Spring	1
27	100005	Washer - Plain 1/4 in.	1
28	52207C	Nut - Bar Adjustment	1
29	104548	Screw - 1/4-20 x 3-5/8 in. lg	1
30	103746	Nut - Flexloc	1
31	103879	Key - Woodruff	1
32	51470D	Clutch Assy	1
33	51468A	Spring - Shoe retaining	1
34	51464A	Shoe - Clutch	4
35	52175A	Rotor Assy - Clutch	1
36	51910	Spring - Pawl	2
37	60730	Pin - Special	2
38	60731	Spacer - Pawl	2
39	60729	Pawl - Clutch	2
40	103718	Spring - Thrust	1
41		Sprocket, Clutch and Drum Assy (See figure 4 for pitch sizes)	1
42	51420	Washer - Inner sprocket	1

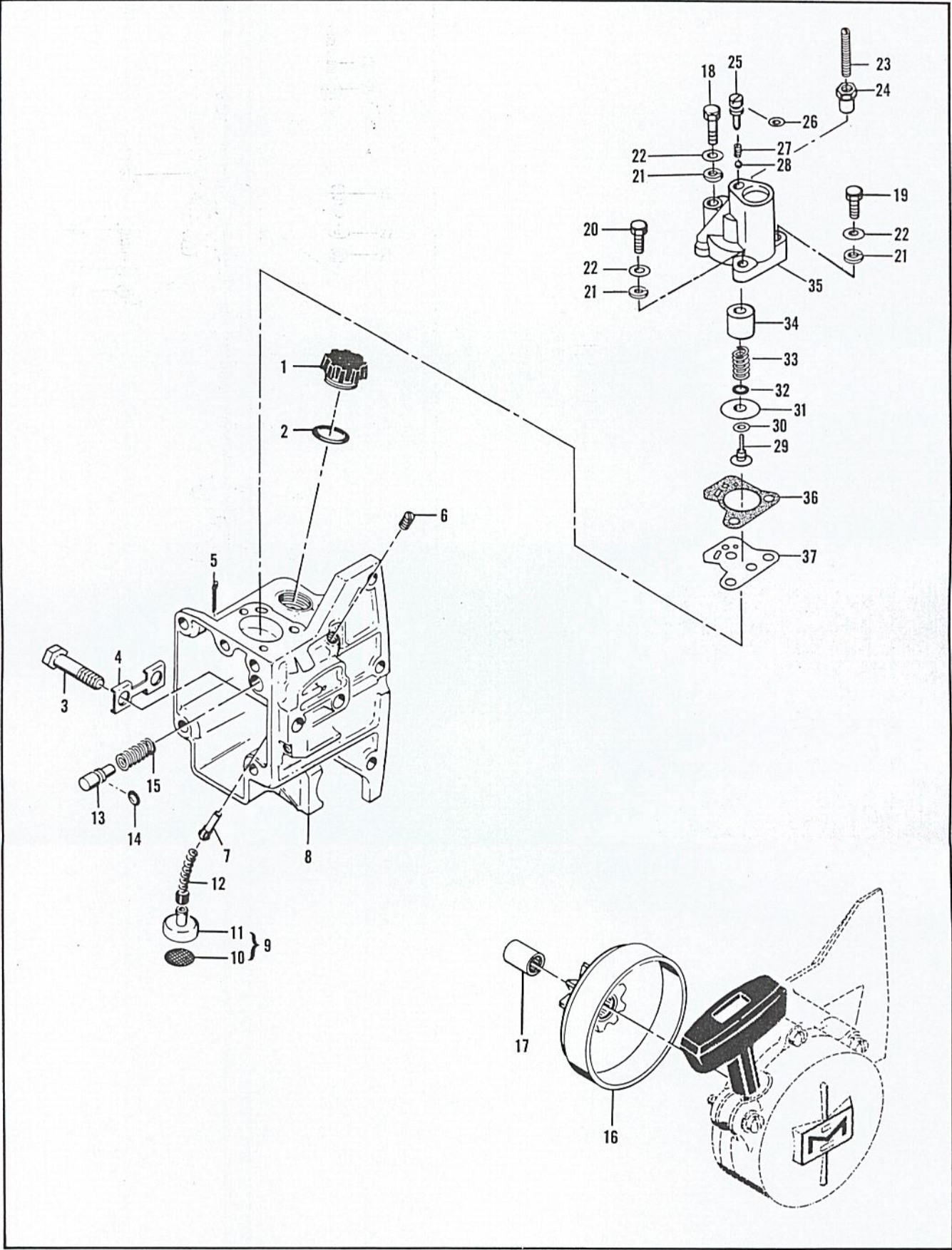


Figure 4. Oiler Housing, Sprocket, Clutch Drum and Bearing Assemblies

FIGURE 4. OILER HOUSING SPROCKET, CLUTCH DRUM AND BEARING ASSEMBLIES

Index No.	Part Number	Nomenclature	Units Per Assy
1	57129A	Cap - Oiler tank	1
2	101148	"O" Ring - Oiler tank cap	1
3	51423B	Bolt - Bar mounting	2
4	51439	Lockplate	1
5	104062	Pin - Cotter	1
	60366	Housing Assy - Oiler	1
6	104869	. Plug - Pipe 1/16-27	1
7	51982A	. Check Valve Assy - Oiler	1
8		. Housing - Oiler (Order Housing Assy #60366)	1
9	51505	Weight Assy - Oil line hose	1
10	51506	. Screen - Oil intake	1
11	51509	. Weight - Oil line	1
12	28007	Hose - Flexible	1
	51947	Piston Assy - Oiler	1
13	51940	. Piston - Oiler	1
14	103198	. "O" Ring - Oiler piston	1
15	51946	. Spring - Oiler	1
	*51774B	Sprocket, Clutch Drum and Bearing Assy (7 tooth, .404 pitch)	1
16	51775B	. Drum and Sprocket Assy	1
17	103688	. Bearing - Needle	1
	**51178B	Sprocket and Clutch Drum Assy - 7/16 in. pitch, 7 tooth (alternate)	1
	***51793B	Sprocket and Clutch Drum Assy - 1/2 in. pitch, 6 tooth (alternate)	1
	****59850	Sprocket and Clutch Drum Assy - Auto-Mac (alternate)	1
18	103354	Screw - Hex hd 10-24 x 1-3/4 in. lg	1
19	102761	Screw - Hex hd 10-24 x 7/8 in. lg	1
20	102388	Screw - Hex hd 10-24 x 5/8 in. lg	1
21	101194	Lockwasher	3
22	102189	Washer	3
	60253	Pump Assy - Pulse	1
23	110202	. Screw - Set 10-24 x 1-1/4 in. lg	1
24	60976	. Locknut - 10-24	1
25	60397	. Screw - Fil hd	1
26	60398	. Washer	1
27	60396	. Spring - Ball Check	1
28	102809	. Ball - Steel 0.093 in. dia	1
29	60260	. Piston Assy	1
30	60937	. Washer	1
31	60263	. Ring - Piston	1
32	101758	. "O" Ring	1
33	60259	. Spring - Piston	1
34	60258	. Sleeve - Piston	1
35	60254	. Body Assy - Pulse pump	1
36	60264	Gasket - Pulse pump	1
37	60936	Plate - Protector	1

*Use only with .404 in. pitch chain.
 **Use only with 7/16 in. pitch chain.
 ***Use only with 1/2 in. pitch chain.
 ****Use only with Auto-Mac chain.

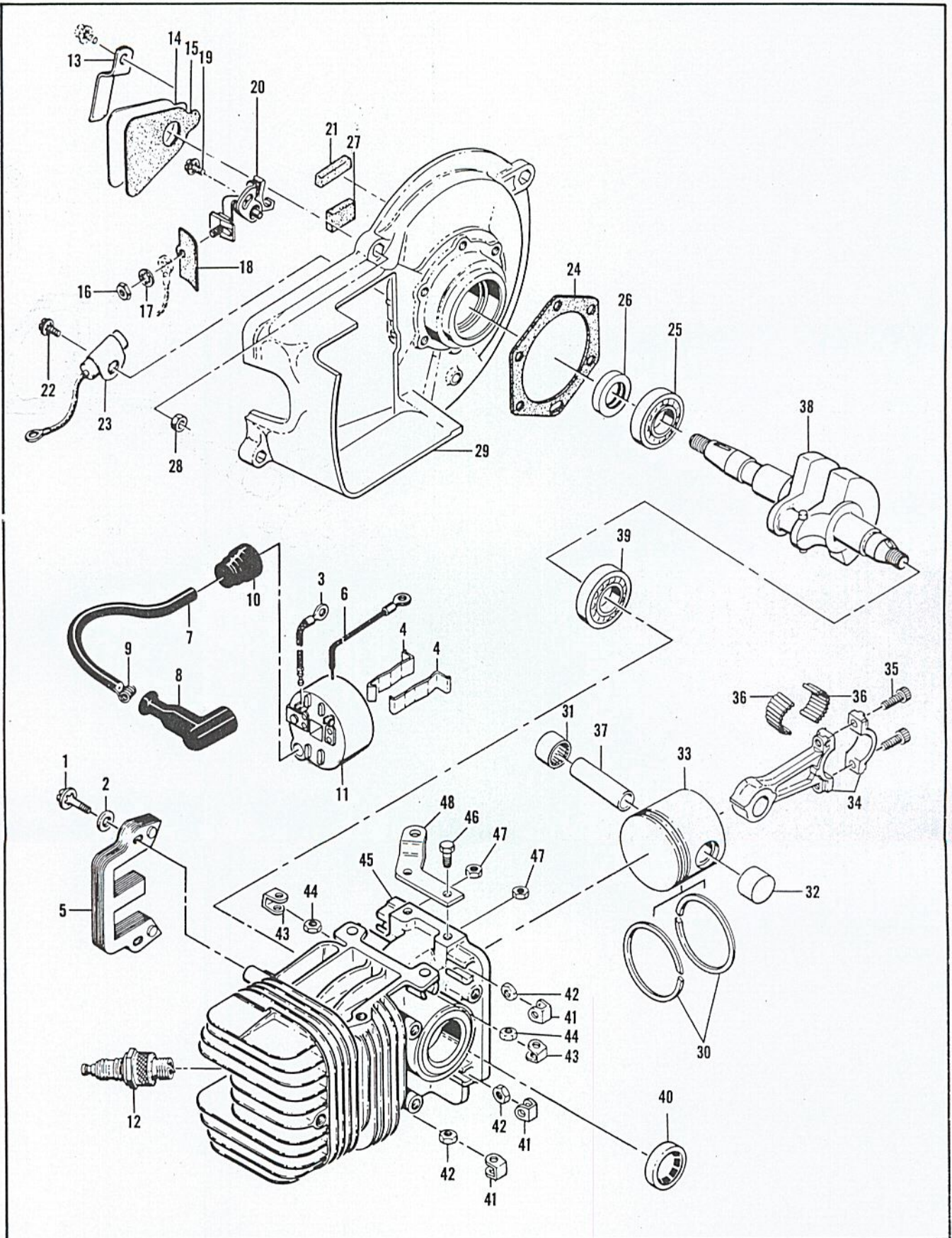


Figure 5. Powerhead Assembly

FIGURE 5. POWERHEAD ASSEMBLY

Index No.	Part Number	Nomenclature	Units Per Assy
1	101965	Screw - Fil hd 10-24 x 7/8 in. lg	2
2	100003	Washer - Plain #10	2
3	57225	Wire Assy - Primary	1
4	51253	Retainer - Coil	2
5	51251	Lamination Assy - Coil	1
	55949A	Coil and Terminal Assy	1
6	101883	Wire Assy - Ground	1
7	52547	Wire Assy - Spark plug	1
8	55060	Boot - Spark plug	1
9	55061	Connector	1
10	55617	Nipple - Spark plug wire	1
11		Coil Assy (Order Coil and Terminal Assy #55949A)	1
12		Spark Plug - 14 mm	1
13	50671	Retainer - Breaker box cover	1
14	50588	Cover - Breaker box	1
15	50589	Gasket - Breaker box	1
16	100251	Nut - Hex 8-32	1
17	100057	Lockwasher - #8 internal	1
18	50381A	Insulator - Breaker terminal	1
19	103672	Screw - 8-32 x 1/2 in. lg (SEMS)	1
20	50076A	Breaker Assy	1
21	50664	Felt - Breaker box	1
22	103672	Screw - 8-32 x 1/2 in. lg (SEMS)	1
23	50074	Condenser	1
24	51240	Gasket - Crankcase	1
25	100824	Bearing - Ball	1
	57126A	Crankcase Cover Assy	1
26	50663	Seal - Oil	1
27	54184	Wiper - Felt	1
28	101326	Nut - Hex 10-24	2
29		Cover - Crankcase (Order Crankcase Cover Assy #57126A)	1
	53941A	Piston Assy	1
30	55123	Ring Set - Piston	1
31	101206	Bearing	1
32	104378	Bearing - (Closed end)	1
33		Piston (Order Piston Assy #53941A)	1
34	47782A	Connecting Rod Assy	1
35	60210	Screw - Socket hd 10-32 x 5/8 in. lg	2
36	102742	Roller - Needle	24
37	58132	Pin - Piston	1
38	60724	Crankshaft	1
39	100824	Bearing - Ball	1
	53563	Crankcase Assy	1
40	104432	Seal - Oil	1
41	18556A	Retainer - Nut	6
42	101143	Nut - Hex 1/4-20	6
43	28053	Retainer - Nut	2
44	101326	Nut - Hex 10-24	2
45		Crankcase (Order Crankcase Assy #53563)	1
46	102762	Screw - Hex hd 10-24 x 1/2 in. lg	2
47	101326	Nut - Hex 10-24	2
48	53271	Bracket - Fuel tank	1

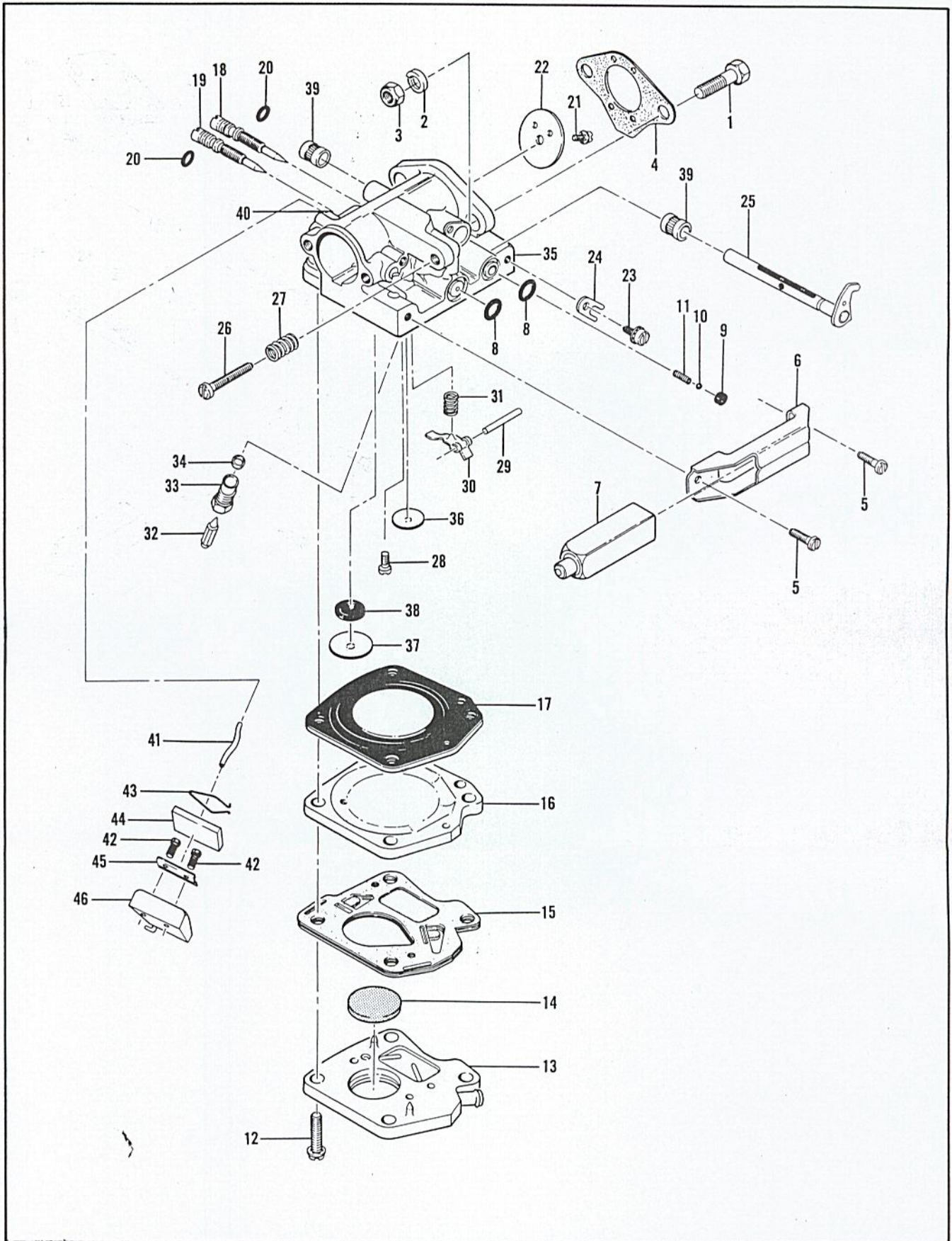


Figure 6. Carburetor and Fuel Collector Assemblies

FIGURE 6. CARBURETOR AND FUEL COLLECTOR ASSEMBLIES

Index No.	Part Number	Nomenclature	Units Per Assy
1	100882	Screw - Hex hd 1/4-20 x 3/4 in. lg	2
2	101476	Lockwasher - 1/4 in.	2
3	103242	Nut - Hex 1/4-20	2
4	51161D	Gasket - Carburetor	1
	60743	Carburetor Assy - McCulloch	1
5	110054	Screw - Pan hd 6-32 x 3/8 in. lg	2
6	53440	Bracket - Primer mounting	1
7	53449	Primer Assy	1
8	101056	"O" Ring	2
9	59480	Seat - Primer valve	1
10	100302	Ball - Steel 1/8 in. dia	1
11	28754	Spring - Primer	1
12	104520	Screw - 10-24 x 7/8 in. lg (SEMS)	4
13	58965	Body Assy - Fuel pump	1
14	57277	Filter - Fuel pump	1
15	57274A	Diaphragm Assy - Fuel pump	1
16	48901	Plate - Carburetor	1
17	55067C	Diaphragm - Carburetor	1
18	53948	Needle - Idle adjustment	1
19	53311	Needle - Main adjustment	1
20	104001	"O" Ring	2
21	104814	Screw - Pan hd 4-40 x 1/4 in. lg (SEMS)	2
22	53309	Plate - Throttle	1
23	110055	Screw - 8-32 x 3/8 in. lg (SEMS)	1
24	55082	Clip - Shaft	1
25	53588A	Shaft Assy - Throttle	1
26	55397	Screw - Fil hd 8-36 x 15/16 in. lg	1
27	51705	Spring - Idle screw	1
28	104164	Screw - Pan hd 4-40 x 1/4 in. lg	1
29	104305	Pin - Lever	1
30	55688	Lever - Inlet control	1
31	57172	Spring - Inlet control	1
32	59710	Needle - Inlet control	1
33	58969	Body - Inlet control valve	1
34	55689	Washer - Valve seat	1
35	58852	Body Assy - Carburetor	1
36	102758	Plug - Expansion 1/2 in.	1
37	104407	Plug - Expansion 1 in.	1
38	55690B	Seal - Capillary	1
39	55062A	Bushing - Carburetor body	2
40	47523	Tube - Collector inlet	1
41	58869A	Hose - Fuel collector	1
42	110061	Screw - Pan hd 8-32 x 3/8 in. lg	2
43	58920A	Retainer - Fuel absorber	1
44	58865	Absorber - Fuel	1
45	58864	Plate - Retaining	1
46	58863A	Collector Assy - Fuel	1

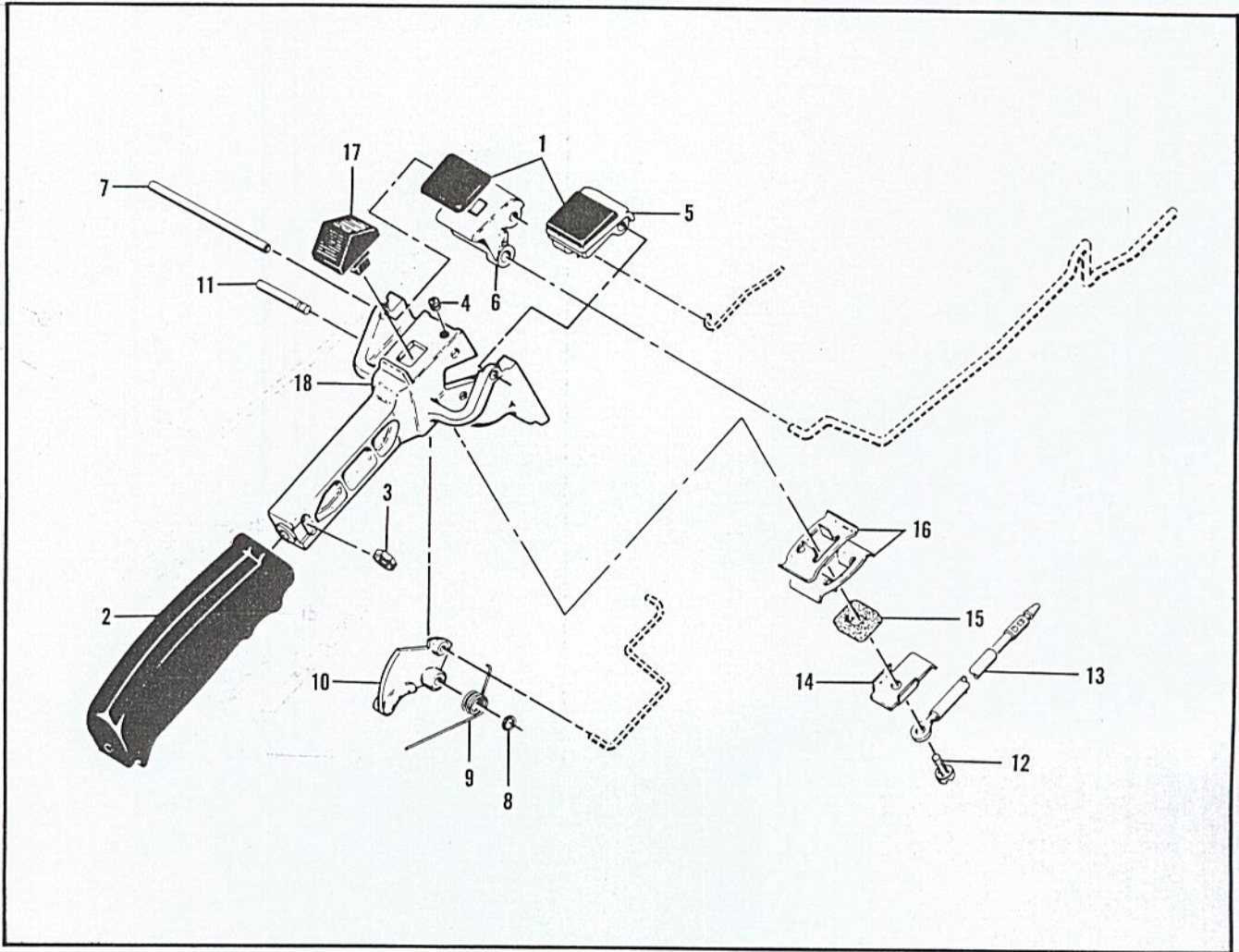


Figure 7. Handle and Control Assembly

FIGURE 7. HANDLE AND CONTROL ASSEMBLY — CONT.

Index No.	Part Number	Nomenclature	Units Per Assy
1	55670	Grommet - Control button	2
	53245	Handle and Control Assy	1
2	55624A	. Grip - Handle	1
3	101326	. Nut - Hex 10-24	1
4	104484	. Screw - Set 8-32 x 1/4 in. lg	1
5	55968A	. Button - Primer control	1
6	55969A	. Button - Oiler control	1
7	51344A	. Shaft - Primer and oiler buttons	1
8	104501	. Retainer - Trigger pin	1
9	55674	. Spring - Trigger return	1
10	55616	. Trigger	1
11	50507	. Pin - Trigger	1
12	110055	. Screw - Fil hd 8-32 x 3/8 in. lg (SEMS)	1
13	51492A	. Wire Assy - Primary	1
14	51279	. Contact - Switch	1
15	51555	. Insulator - Switch	1
16	51554A	. Detent - Switch	2
17	57718	. Button - Switch	1
18	55986	. Handle	1

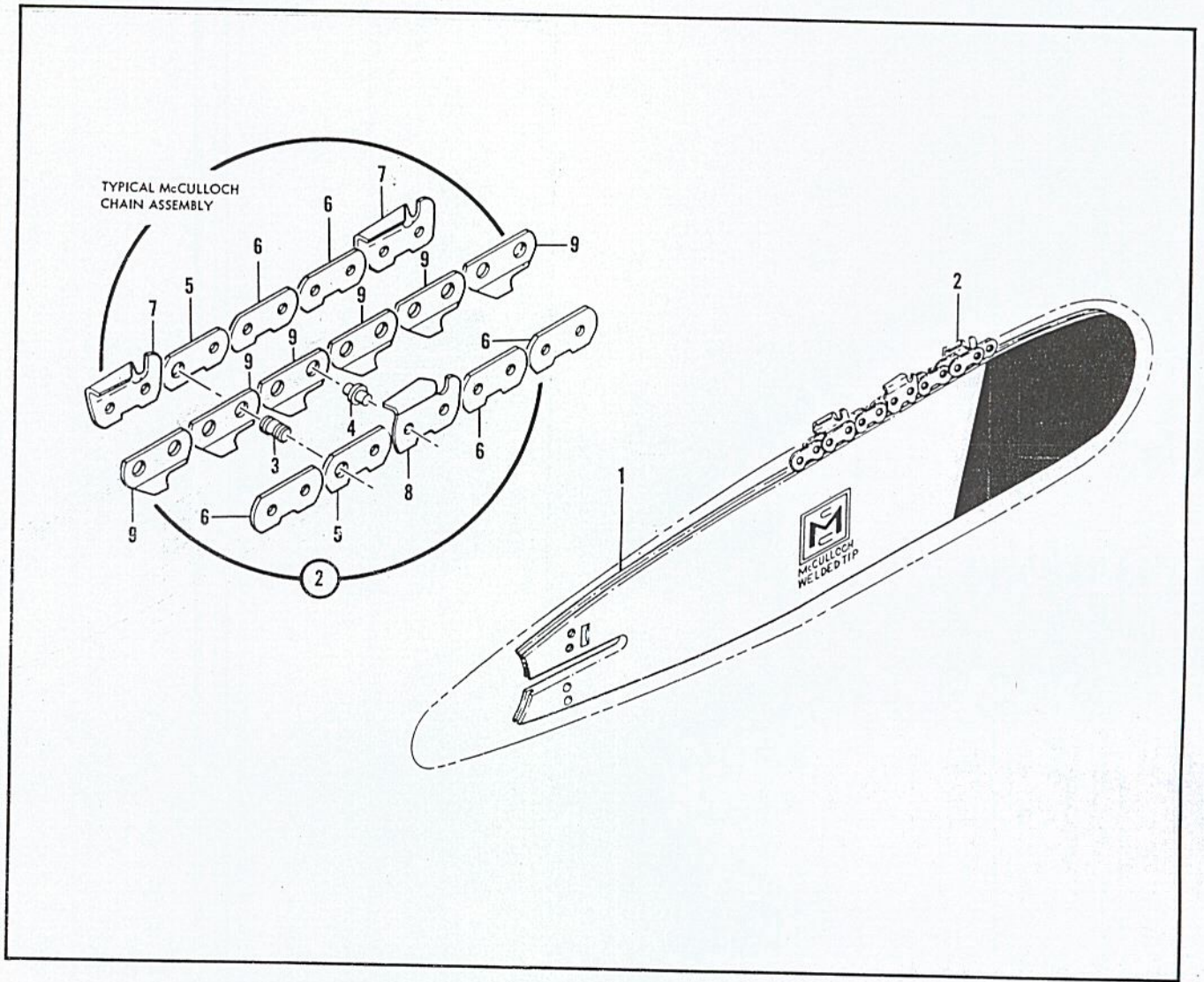


Figure 8. Bar and Chain

FIGURE 8. BAR AND CHAIN

Index No.	Part Number	Nomenclature	Units Per Assy
1	50405A	Bar - 18 in.	1
	51407A	Bar - 24 in. (alternate)	1
	51409A	Bar - 30 in. (alternate)	1
2		Typical McCulloch Chain Assy	1
3		. Master Pin	
4		. Shoulder Rivet	
5		. Master Link	
6		. Side Link	
7		. Cutter - L. H.	
8		. Cutter - R. H.	
9		. Center Link	

OVERSIZED PISTON ASSEMBLY

Index No.	Part Number	Nomenclature	Units Per Assy
	53942A	Piston Assy 0.010 in. oversize	1
	55124	. Ring Set 0.010 in. oversize	1
	101206	. Bearing	1
	104378	. Bearing (closed end)	1
	53943A	Piston Assy 0.020 in. oversize	1
	55125	. Ring Set 0.020 in. oversize	1
	101206	. Bearing	1
	104378	. Bearing (closed end)	1
	53944A	Piston Assy 0.030 in. oversize	1
	55126	. Ring Set 0.030 in. oversize	1
	101206	. Bearing	1
	104378	. Bearing (closed end)	1

TOOLS AND ACCESSORIES

Index No.	Part Number	Nomenclature	Units Per Assy
	*51445A	Wrench and Screwdriver Combination	
	*14168A	Wrench - Spark plug	
	*60760	Owner's Manual of Operating Instructions	
	*56625A	Chain Maintenance Manual	
	18413A	Feeler Gauge	
	102094	Chain Grinding Fixture	
	56224	Chain Breaker - Rivet Spinner	
	56250	Depth Gauge - 0.025 - 0.040 in.	
	56251	Depth Gauge - 0.040 - 0.060 in.	
	56409	McCulloch Oil (1 quart can)	
	56404	McCulloch Oil (12 oz. can)	
	102449	McCulloch Yellow Paint (12 oz. spray bomb type)	

*Items furnished with each chain saw.

