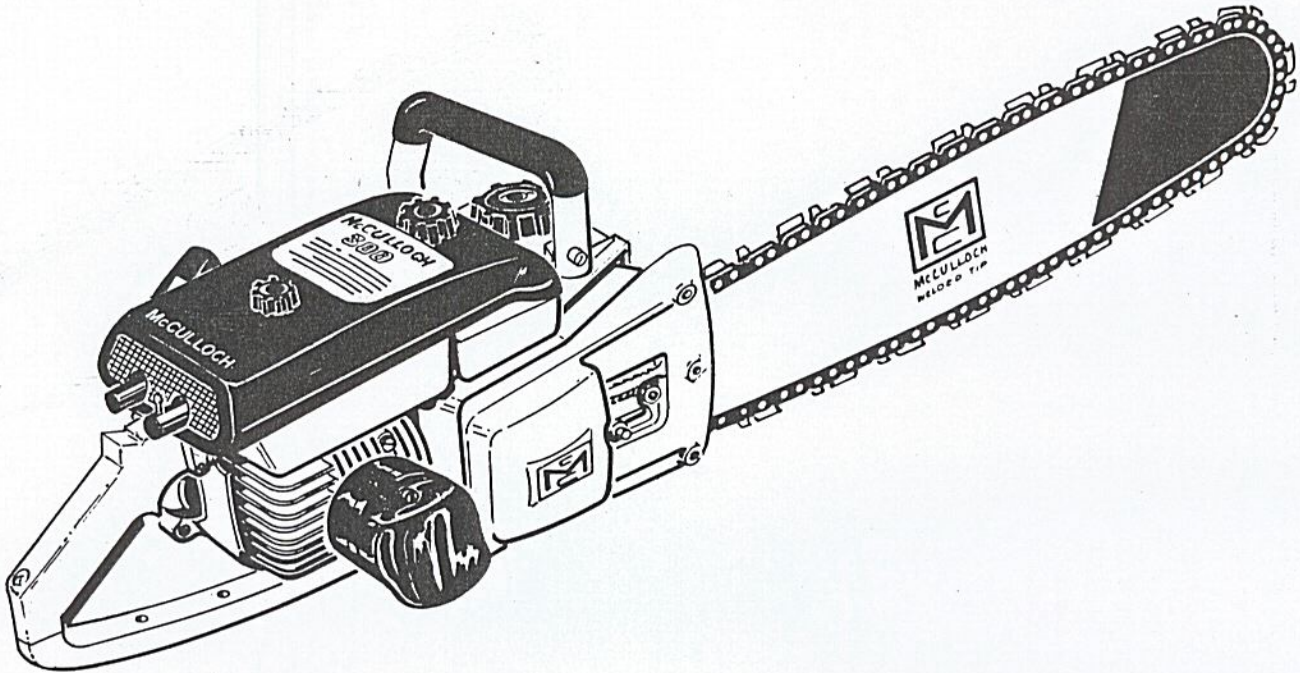


ILLUSTRATED PARTS LIST

SEPTEMBER 1965



The following pages contain an illustrated parts list for the Model 300 Chain Saw. Due to small differences between saws, it is important that the Serial Number of your saw be included whenever spare parts are ordered.

	Page
Figure 1. Engine Exploded View - General	2
Figure 2. Starter and Crankcase Cover Assemblies	4
Figure 3. Oiler Tank and Fuel Tank Assemblies	6
Figure 4. Cover and Airbox Assemblies	8
Figure 5. Carburetor Assembly	10
Figure 6. Powerhead Assembly	12
Figure 7. Clutch Guard - Bar and Chain Assembly	14

McCULLOCH CORPORATION

6101 West Century Boulevard, Los Angeles, California 90045

MODEL
300

SERIAL NO. 20001 & UP

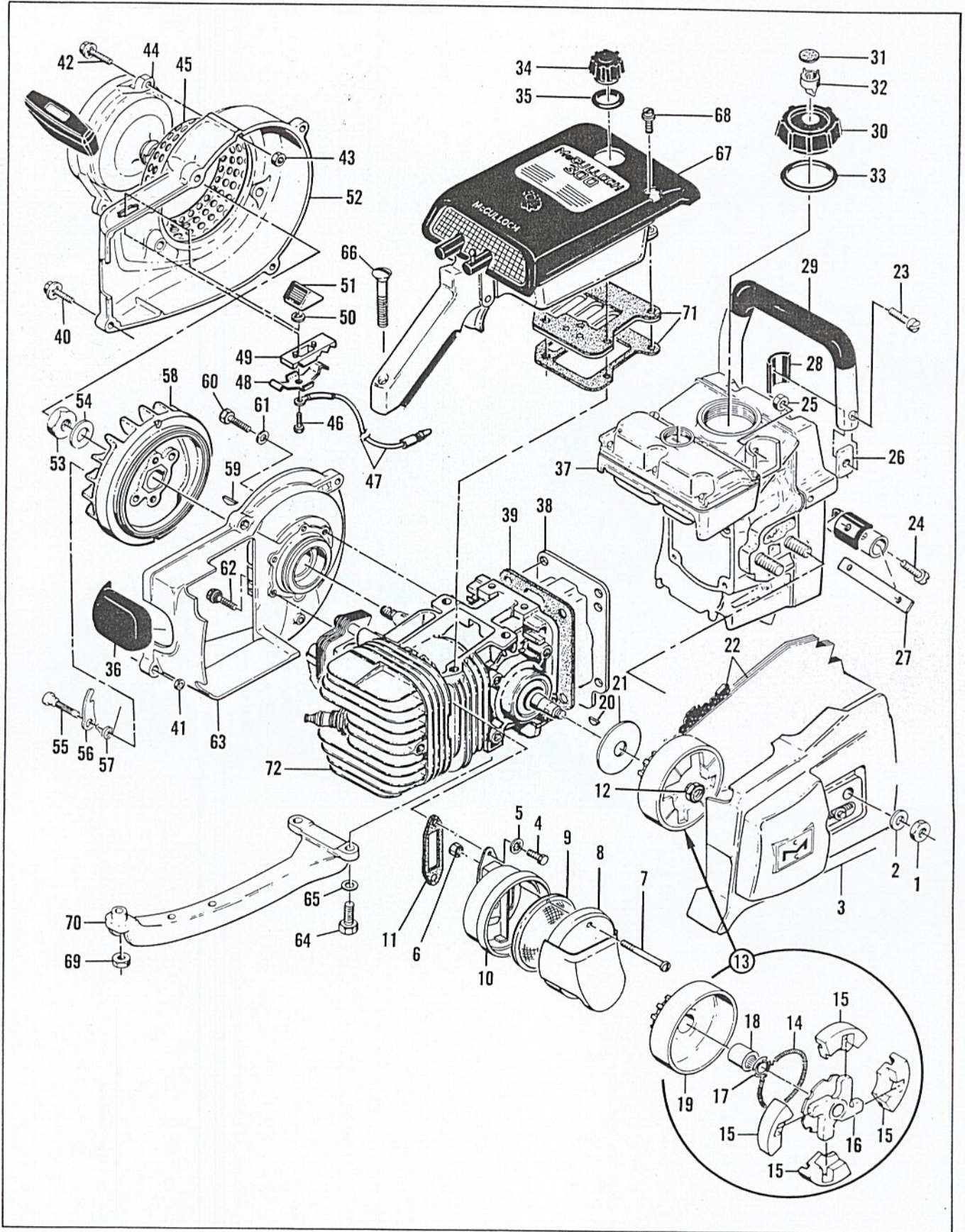


Figure 1. Engine Exploded View - General

FIGURE 1. ENGINE EXPLODED VIEW — GENERAL

SERIAL NO. 20001 & UP

Index No.	Part Number	Nomenclature	Units Per Assy
1	103729	Nut - Hex 3/8-24	2
2	100006	Washer - Plain 3/8 in.	2
3		Guard Assy - Clutch (See Figure 7)	1
4	102388	Screw - Hex hd 10-24 x 5/8 in. lg.	2
5	103100	Lockwasher - No. 10 internal	2
	53204C	Spark Arrester Assy.	1
6	101191	. Nut - Hex 10-24	2
7	110371	. Screw - Pan hd 10-24 x 1-5/8 in. lg.	2
8	53205C	. Top Assy - Spark arrester	1
9	* 51968	. Baffle - Spark arrester	1
10	52424A	. Bottom Assy - Spark arrester	1
11	53652	Gasket - Spark arrester	1
12	103746	Nut - Flexloc.	1
13		Clutch, Sprocket, Drum and Bearing Assy	1
	60315	Clutch Assy.	1
14	51468A	. Spring - Clutch	1
15	51464A	. Shoe - Clutch	4
16	60316	. Rotor Assy - Clutch	1
17	103718	Spring - Thrust	1
	51774B	Sprocket, Drum and Bearing Assy	1
18	103688	. Bearing - Needle	1
19	51775B	. Sprocket and Drum Assy	1
20	103879	Key - Woodruff	1
21	51420	Washer - Sprocket	1
22		Bar and Chain Assy (See Figure 7)	1
23	102356	Screw - Fil hd 1/4-20 x 7/8 in. lg.	1
24	103267	Screw - Fil hd 1/4-20 x 1 in. lg.	2
25	101143	Nut - Hex 1/4-20	3
26	57133	Saddle - Frame	1
27	62233	Saddle - Frame	1
28	50062	Insulator - Frame	3
29	63349	Frame and Grip Assy	1
30	55934B	Fuel Cap Assy	1
31	55063	. Filter - Fuel cap	1
32	53766A	. Valve - Fuel cap	1
33	101348	"O" Ring	1
34	57129A	Cap - Oil filler	1
35	101148	"O" Ring	1
36	57565	Cover Assy - Spark plug	1
37		Oiler Tank and Fuel Tank Assy (See Figure 3)	1
38	53399E	Cover - Crankcase bottom	1
39	58166A	Gasket - Bottom	1
40	104815	Screw - Hex hd 10-24 x 7/8 in. lg. (SEMS)	4
41	101326	Nut - Hex hd 10-24	2
42	104815	Screw - Hex hd 10-24 x 7/8 in. lg. (SEMS)	3
43	101191	Nut - Hex 10-24	3
44	60130	Starter Assy (See Figure 2)	1
45	50581A	Guard - Sawdust	1
	53488	Fan Housing Assy	1
46	103672	. Screw - Hex hd 8-32 x 1/2 in. lg. (SEMS)	1
47	53490	. Wire Assy - Stop switch	1
48	59592	. Contact - Switch	1
49	59591	. Base - Switch	1
50	100057	. Lockwasher - No. 8 internal	1
51	57718	. Button - Switch	1
52		. Housing - Fan (Order Fan Housing Assy #53488)	1
53	101179	Nut - Hex 7/16 in.	1
54	101270	Washer - Special	1
55	36144B	Pin - Starter pawl	2
56	24093	Pawl - Starter	2
	* 61545A	Baffle Assy - Spark arrester (Alternate)	

This list is continued on page 5

MODEL

300

SERIAL NO. 20001 & UP

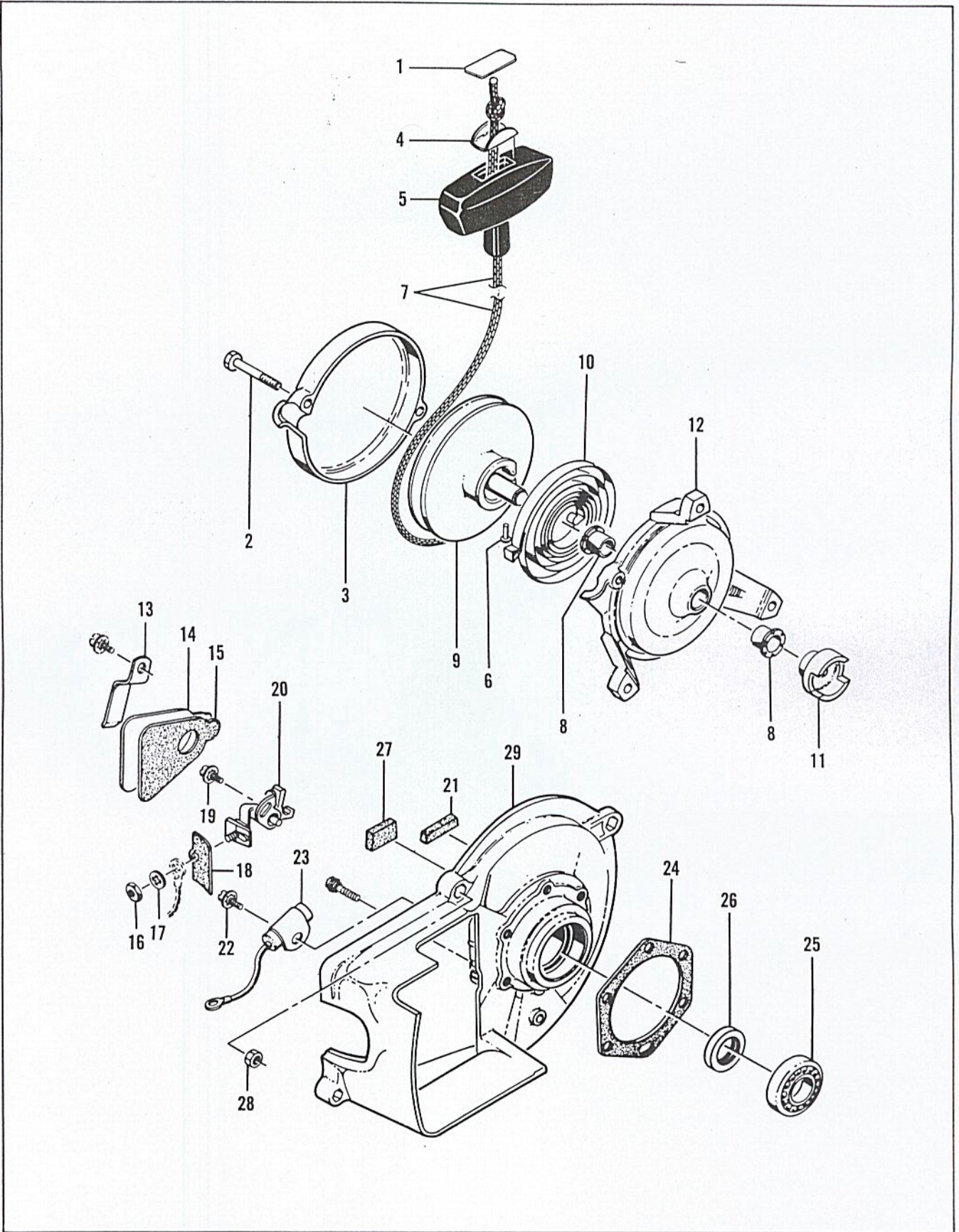


Figure 2. Starter and Crankcase Cover Assemblies

FIGURE 1. ENGINE EXPLODED VIEW — GENERAL (CONT)

Index No.	Part Number	Nomenclature	Units Per Assy
57	50582	Spring - Pawl	2
58	48785D	Flywheel Assy.	1
59	103879	Key - Woodruff	1
60	102289	Screw - Hex hd. 10-24 x 3/4 in. lg.	4
61	102189	Washer - Plain #10	3
62	55494	Screw - Sealing #10	2
63	57126A	Crankcase Cover Assy (See Figure 2)	1
64	100882	Screw - Hex hd. 1/4-20 x 3/4 in. lg.	2
65	100004	Washer - Plain 1/4 in.	2
66	104435	Screw - Oval hd. 10-24 x 1-3/4 in. lg.	1
67		Cover and Airbox Assy (See Figure 4)	1
68	110127	Screw - Hex hd. 10-24 x 7/8 in. lg. (SEMS)	4
69	101191	Nut - Hex 10-24	1
70	50041	Brace - Handle	1
71		Reed Plate Assy and Insulator (See Figure 4)	1
72		Powerhead Assy (See Figure 6)	1

FIGURE 2. STARTER AND CRANKCASE COVER ASSEMBLIES

Index No.	Part Number	Nomenclature	Units Per Assy
	60130	Starter Assy	1
1	57232	. Plate - Starter handle	1
2	104396	. Screw - Pan hd 10-24 x 3/4 in. lg.	2
3	60647	. Cover - Starter	1
4	57231	. Cup - Starter handle	1
5	57230	. Handle - Starter	1
6	101136	. Rivet	1
7	28716	. Rope - Starter	1
8	57535	. Bushing - Starter base	2
9	57792	. Drum - Starter	1
10	51665	. Spring - Rewind	1
11	57790	. Ratchet - Starter	1
12	60646	. Base - Starter	1
13	50671	Retainer - Breaker box cover	1
14	50588A	Cover - Breaker box	1
15	50589A	Gasket - Breaker box	1
16	100251	Nut - Hex 8-32	1
17	100057	Lockwasher - No. 8 internal	1
18	50381A	Insulator - Breaker terminal	1
19	103672	Screw - 8-32 x 1/2 in. lg. (SEMS)	1
20	50076A	Breaker Assy	1
21	50664	Felt - Breaker box	1
22	103672	Screw - 8-32 x 1/2 in. lg. (SEMS)	1
23	50074	Condenser	1
24	51240	Gasket - Crankcase	1
25	100824	Bearing - Ball	1
	57126A	Crankcase Cover Assy	1
26	50663	. Seal - Oil	1
27	54184	. Wiper - Felt	1
28	101326	. Nut - Hex 10-24	2
29		. Cover - Crankcase (Order Crankcase Cover Assy #57126A)	1

MODEL
300

SERIAL NO. 20001 & UP

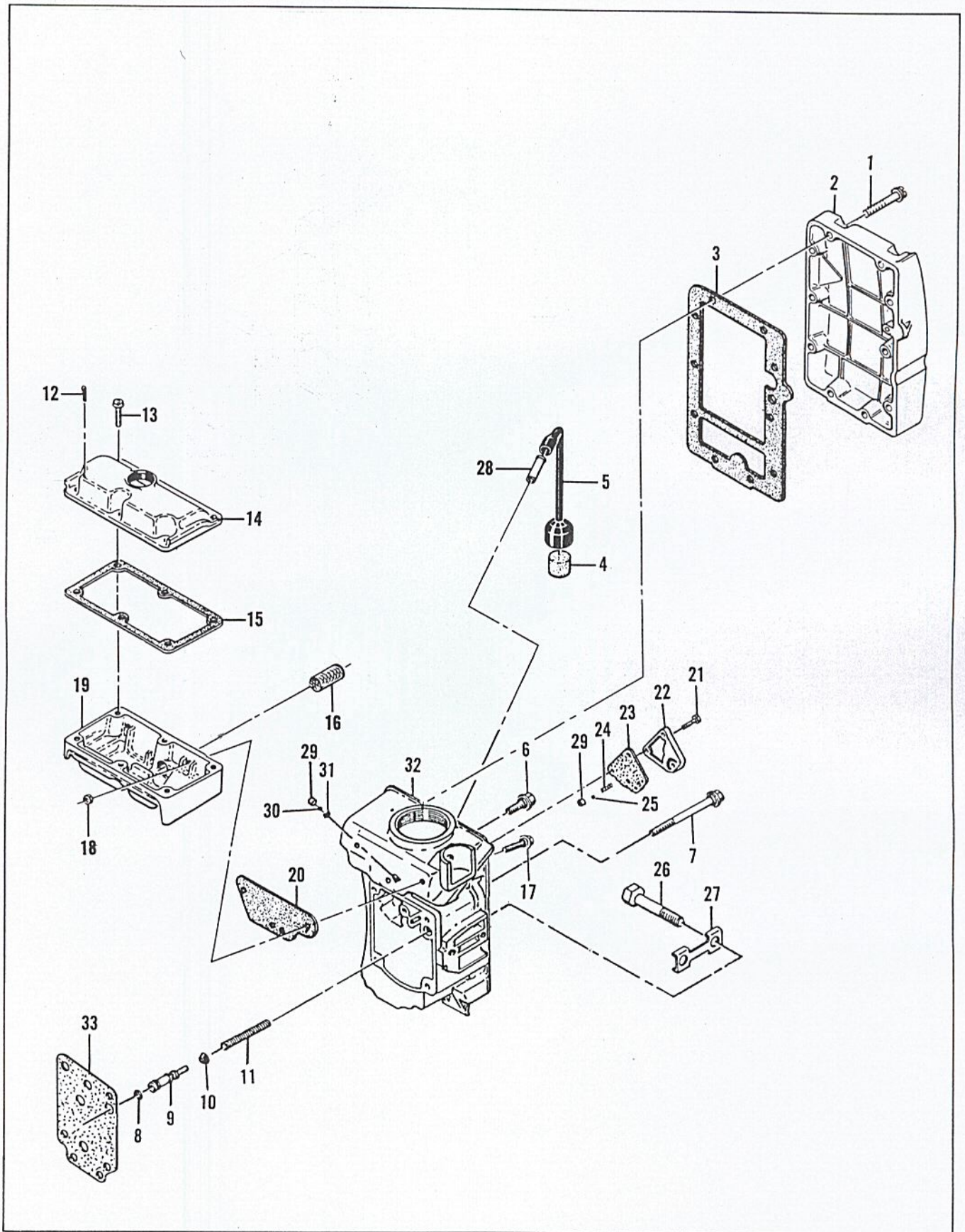


Figure 3. Oiler Tank and Fuel Tank Assemblies

FIGURE 3. OILER TANK AND FUEL TANK ASSEMBLIES

Index No.	Part Number	Nomenclature	Units Per Assy
1	104396	Screw - Pan hd 10-24 x 3/4 in. lg.	10
2	60781	Cover - Fuel tank	1
3	50034B	Gasket - Fuel tank	1
4	50124A	Filter - Fuel tank	1
5	50082	Hose - Fuel	1
6	57840	Screw Assy - Sealing	3
7	50569	Screw Assy - Sealing	1
8	101056	"O" Ring	1
9	63122	Piston - Oiler	1
10	24104A	Cup - Oiler piston	1
11	18349A	Spring - Oiler	1
12	100010	Pin - Cotter 1/16 x 1/2	1
13	104395	Screw - Pan hd 10-24 x 5/8 in. lg.	6
14	57114A	Cover - Oil tank	1
15	57152	Gasket - Oil tank cover	1
16	57279	Screen - Oil tank	1
17	55494	Screw Assy - Sealing	3
18	101326	Nut - Hex 10-24	3
19	57112A	Tank - Oiler	1
20	57147	Gasket - Oiler tank	1
21	103814	Screw - Hex hd 10-24 x 5/8 in. lg.	3
22	62339A	Plate - Pulse pump	1
23	62338B	Gasket - Pulse pump	1
24	63034	Spring - Check valve	1
25	100071	Ball - Check valve	1
	62154A	Fuel Tank Assy.	1
26	61437	. Bolt - Bar mounting	2
27	51439	. Lockplate	1
28	28042	. Tube - Fuel hose	1
29	62216	. Seat - Check valve	2
30	100071	. Ball - Check valve	1
31	110327	. Ring - Ball retainer	1
32		. Tank - Fuel (Order Fuel Tank Assy #62154A)	1
33	60601A	Gasket - Fuel tank	1

MODEL
300

SERIAL NO. 20001 & UP

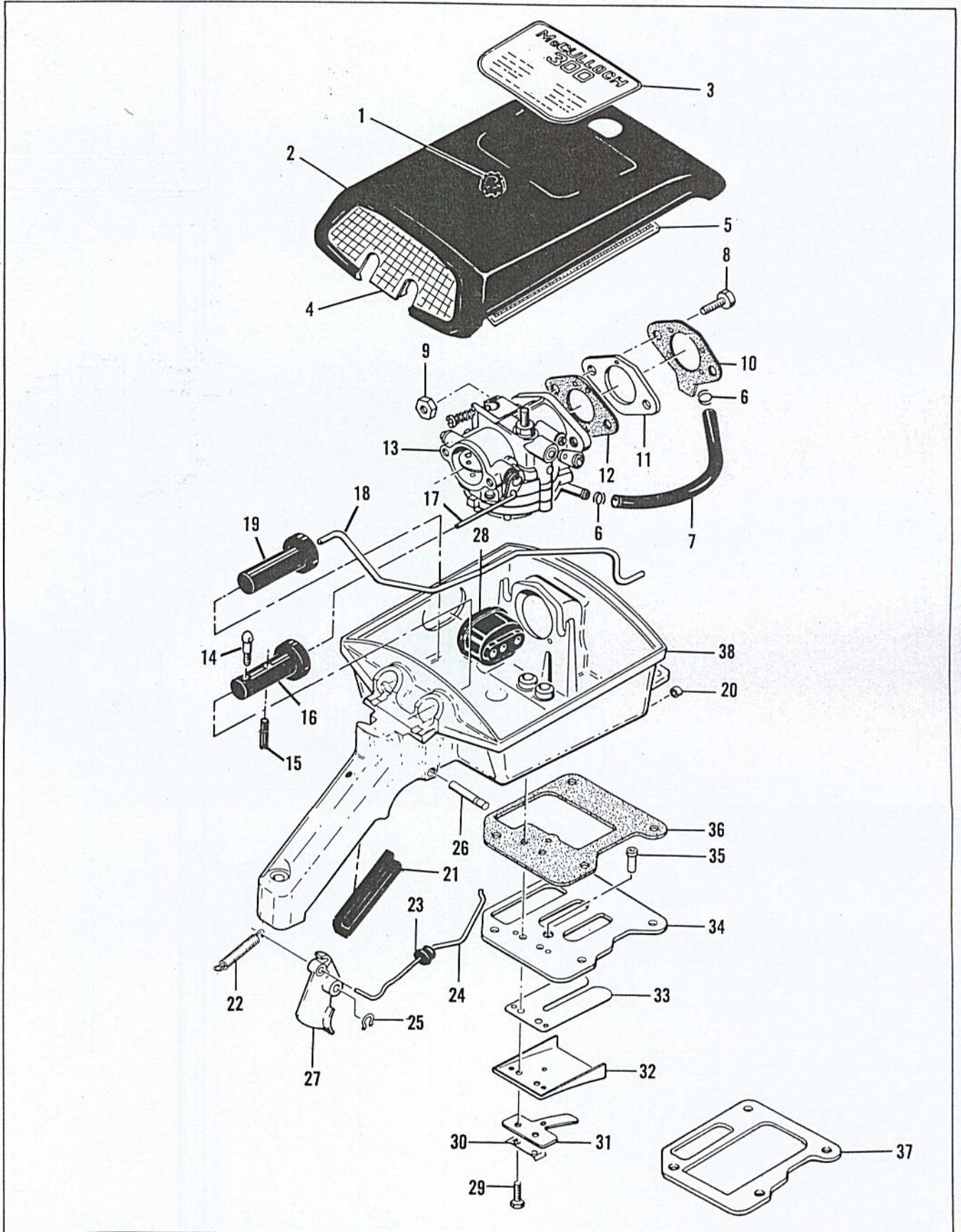


Figure 4. Cover and Airbox Assemblies

FIGURE 4. COVER AND AIRBOX ASSEMBLIES

Index No.	Part Number	Nomenclature	Units Per Assy
	60342	Cover Assy - Air cleaner	1
1	60242	. Knob - Air cleaner cover	1
2		. Cover - Air cleaner (Order Assy #60342)	1
3	62783	Plate - Name	1
4	57218	Trim - Air cleaner cover	1
5	55497	Screen - Air cleaner	2
6	50742	Clamp - Fuel hose	1
7	50097	Hose - Fuel	2
8	53539	Screw - Hex hd 1/4-20 x 15/16 in. lg.	2
9	103242	Nut - Hex 1/4-20	1
10	50123B	Gasket - Adapter to Airbox	1
11	50686A	Adapter - Carburetor	1
12	55519A	Gasket - Carburetor	1
13	50687D	Carburetor Assy (See Figure 5)	1
14	50776	Screw - Special	1
15	101556	Pin - Roll	1
16	50777B	Button - Choke	1
17	57134	Push Rod - Choke	1
18	57866A	Pushrod - Oiler	1
19	50591B	Button - Oiler	1
20	55449A	Washer - Felt	1
21	50218A	Insert - Handle	1
	62488	Airbox Assy	1
22	36499	. Spring - Throttle	1
23	60237	. Grommet - Throttle	1
24	50684	. Rod - Throttle	1
25	104501	. Retainer - Trigger pin	1
26	50507	. Pin - Trigger	1
27	50091B	. Trigger	2
28	57105	. Grommet - Carburetor control	1
29	103740	. Screw - Hex hd 8-32 x 5/8 in. lg.	2
30	51480	. Lockplate	1
31	57658A	. Clamp - Reed	1
32	53686A	. Deflector - Fuel	1
33	48593	. Valve - Reed	1
34	53685C	. Plate - Reed	1
35	63067	. Tube - Reed plate	1
36	57145A	. Gasket - Airbox	1
37	62834	. Insulator - Reed plate	1
38		. Airbox (Order Airbox Assy #62488)	1

MODEL
300

SERIAL NO. 20001 & UP

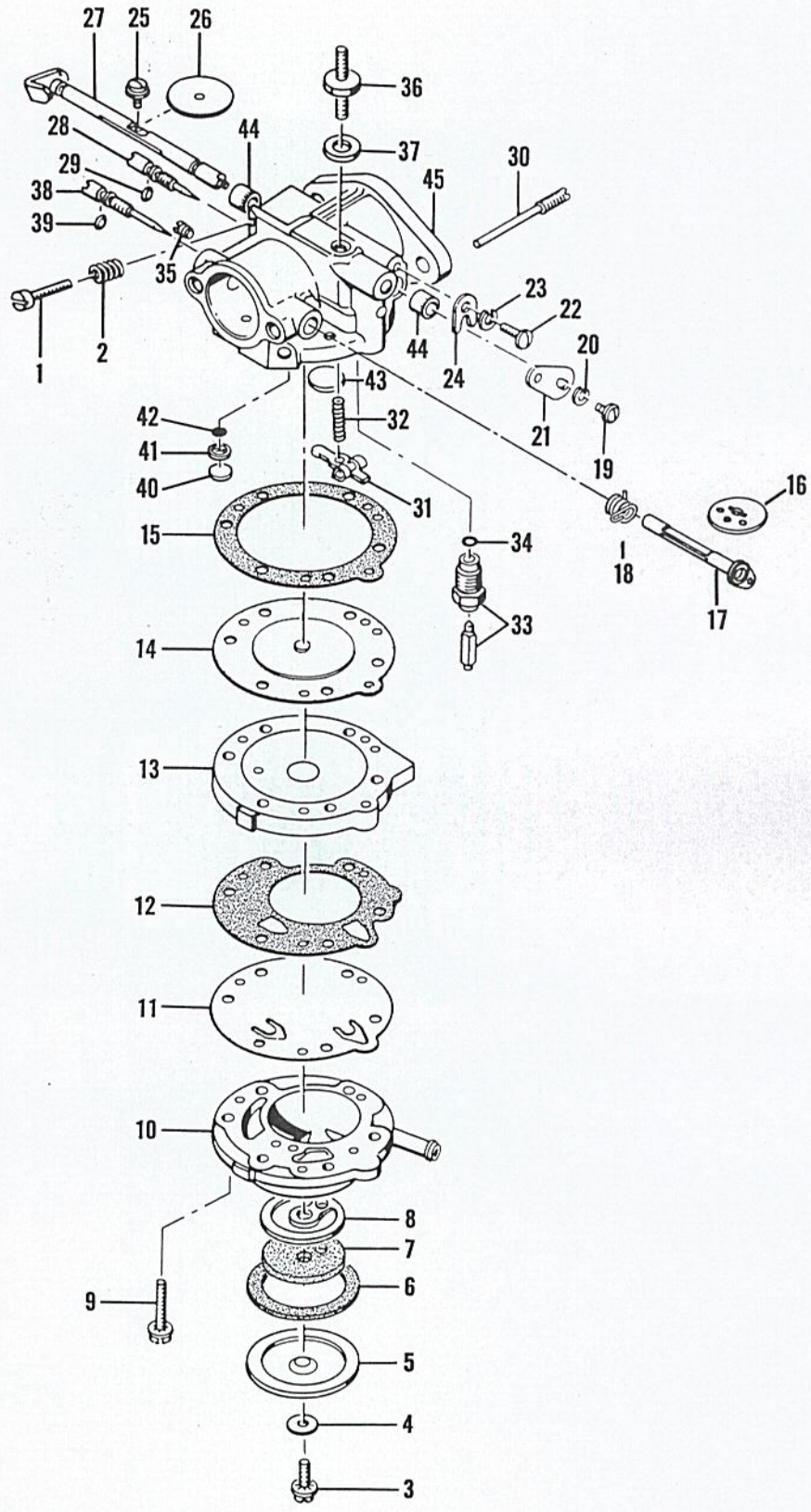


Figure 5. Carburetor

FIGURE 5. CARBURETOR

Index No.	Part Number	Nomenclature	Units Per Assy
	50687D	Carburetor Assy	1
1	*50799	. Screw - Idle speed regulating	1
2	*51705	. Spring - Idle speed regulating screw	1
3	*50797	. Screw - Fuel filter cover	1
4	50798	. Gasket - Fuel filter cover	1
5	50796	. Cover - Fuel filter	1
6	51704	. Gasket - Fuel filter cover	1
7	*53717	. Filter Element - Fuel	1
8	53565	. Gasket - Fuel filter	1
9	51597	. Screw - Fuel pump body	6
10	50670	. Body - Fuel pump.	1
11	53164	. Diaphragm - Fuel pump	1
12	51594	. Gasket - Fuel pump	1
13	51592	. Cover - Diaphragm	1
14	*51590A	. Diaphragm Assy	1
15	51591A	. Gasket - Diaphragm	1
16	53813	. Shutter - Choke	1
17	53814	. Shaft and Lever - Choke	1
18	51586	. Spring - Choke shaft return	1
19	*51719	. Screw - Throttle governor lever	1
20	100261	. Lockwasher	1
21	51718	. Lever - Throttle governor	1
22	*51717	. Screw - Throttle shaft clip.	1
23	*100252	. Lockwasher	1
24	51716	. Clip - Throttle shaft	1
25	*51721	. Screw - Throttle shutter	1
26	51720	. Shutter - Throttle.	1
27	50803A	. Throttle Shaft and Lever	1
28	*51702	. Needle Assy - Idle adjustment	1
29	51703	. "O" Ring.	1
30	*51710	. Screw - Inlet control lever pinion	1
31	*51709	. Lever - Inlet control.	1
32	*51711	. Spring - Inlet tension	1
33	*51707A	. Seat and Needle Assy	1
34	51708	. Gasket - Inlet seat	1
35	51589	. Drain Screw - Diaphragm chamber	1
36	50785	. Stud - Air cleaner attachment	1
37	50786A	. Gasket - Stud.	1
	50779C	. Body and Needle Assy - Carburetor.	1
38	*53718	. Needle Assy - Main adjustment.	1
39	51703	. "O" Ring	1
40	*57653	. Plug - Channel cup	1
41	57652	. Ring - Retainer	1
42	57651	. Screen	1
43	*51583	. Plug - Welch.	1
44	51715	. Bushing - Shaft	2
45		. Body. (Order Carburetor Body Assy #50779C)	1
	*50806	Gasket and Packing Set	1
	53719	Repair Parts Kit	1

*Indicates part in Repair Parts Kit #53719.

MODEL
300

SERIAL NO. 20001 & UP

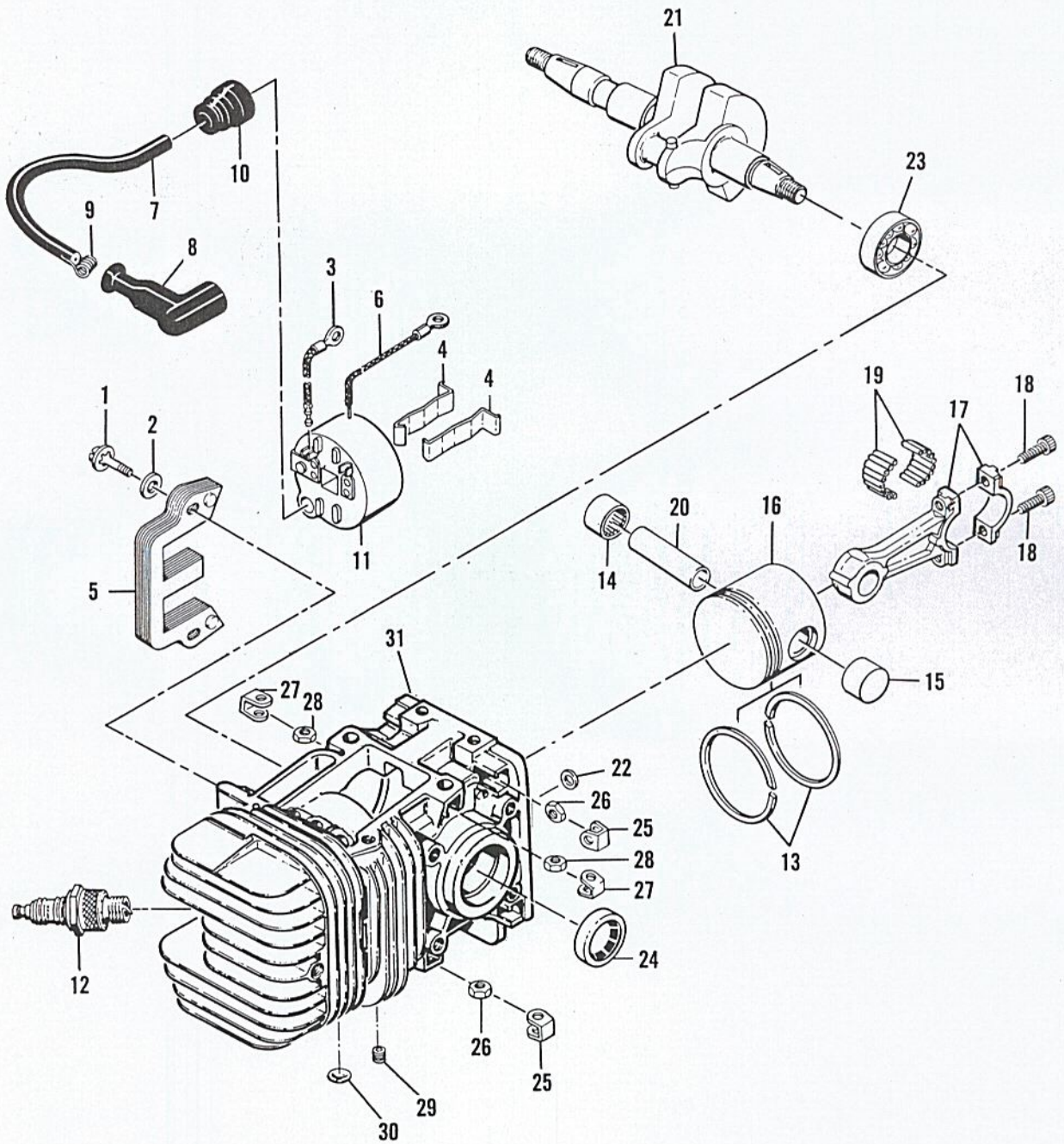


Figure 6. Powerhead Assembly

FIGURE 6. POWERHEAD ASSEMBLY

Index No.	Part Number	Nomenclature	Units Per Assy
1	104815	Screw - Hex hd 10-32 x 7/8 in. lg.	2
2	102189	Washer - Plain #10.	2
3	57225	Wire Assy - Primary.	1
4	51253	Retainer - Coil.	2
5	51251	Lamination Assy.	1
	55949A	Coil and Terminal Assy.	1
6	101883	. Wire Assy - Ground.	1
7	52547	. Wire Assy - Spark plug.	1
8	55060	. . Boot - Spark plug.	1
9	55061	. . Connector.	1
10	55617	. Nipple - Spark plug wire.	1
11		Coil Assy. (Order Coil and Terminal Assy #55949A)	1
12		Spark Plug 14MM.	1
	53941A	Piston Assy.	1
13	55123	. Ring Set - Piston.	1
14	101206	. Bearing.	1
15	104378	. Bearing (closed end).	1
16		. Piston. (Order Piston Assy #53941A)	1
17	47903	Connecting Rod Assy.	1
18	60210A	. Screw - Socket hd 10-32 x 5/8 in. lg.	2
19	102742	. Roller - Needle.	24
20	62831	Pin - Piston.	1
21	60313A	Crankshaft.	1
22	57736	Seal - Pushrod.	1
23	100824	Bearing - Ball.	1
	62707	Crankcase Assy.	1
24	104432	. Seal - Oil.	1
25	18556A	. Retainer - Nut.	6
26	105394	. Nut - Hex 1/4-20.	6
27	28053	. Retainer - Nut.	2
28	101326	. Nut - Hex 10-24.	2
29	110034	. Insert - Taplok.	2
30	110179	. Plug - Expansion.	3
31		. Crankcase. (Order Crankcase Assy #62707)	1

OVERSIZE PISTON ASSEMBLY

Part Number	Nomenclature	Units Per Assy
53942A	Piston Assy 0.010 in. oversize.	1
55124	. Ring Set 0.010 in. oversize.	1
101206	. Bearing.	1
104378	. Bearing (closed end).	1
53943A	Piston Assy 0.020 in. oversize.	1
55125	. Ring Set 0.020 in. oversize.	1
101206	. Bearing.	1
104378	. Bearing (closed end).	1
53944A	Piston Assy 0.030 in. oversize.	1
55126	. Ring Set 0.030 in. oversize.	1
101206	. Bearing.	1
104378	. Bearing (closed end).	1

MODEL
300

SERIAL NO. 20001 & UP

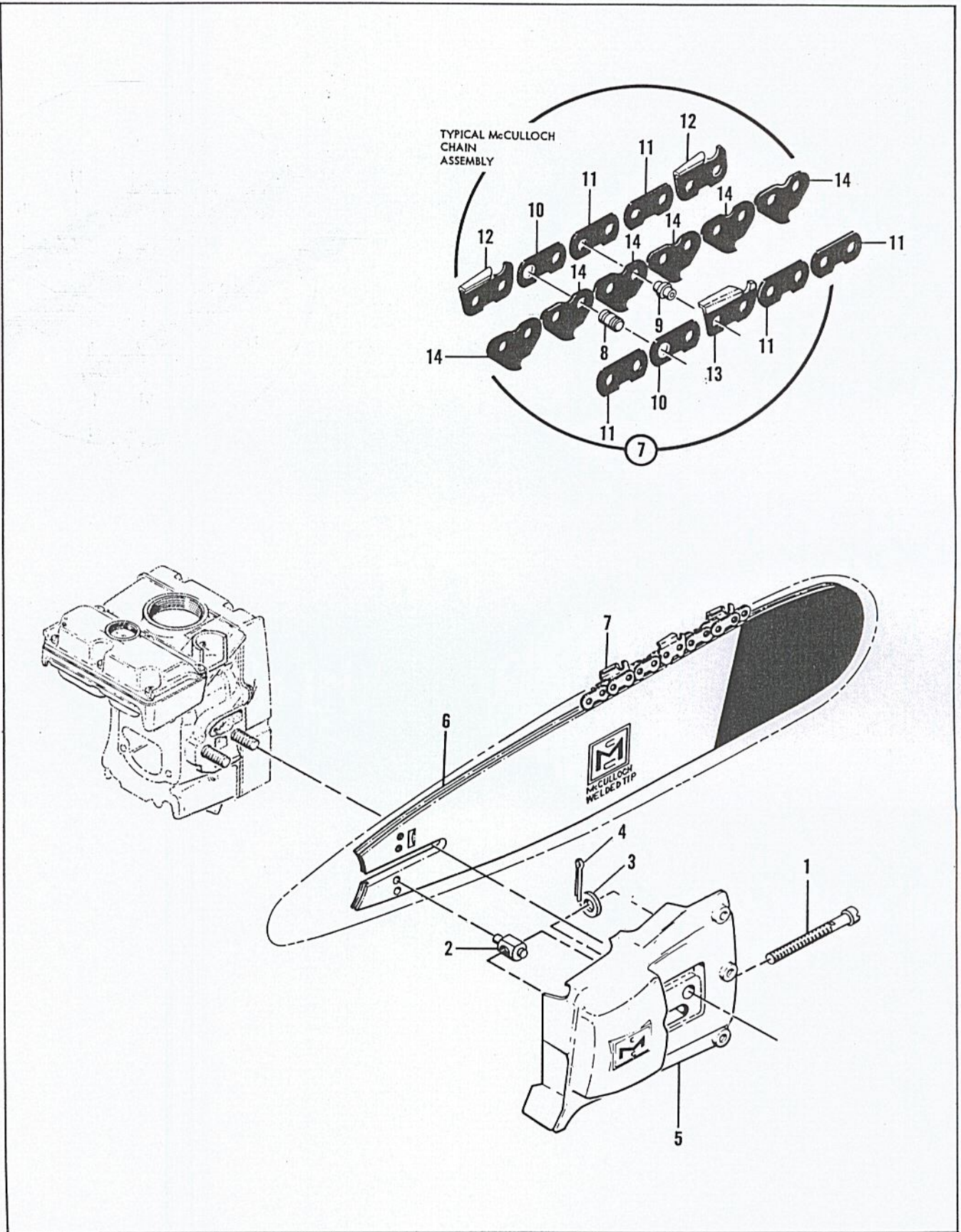


Figure 7. Clutch Guard - Bar and Chain Assemblies

FIGURE 7. CLUTCH GUARD — BAR AND CHAIN ASSEMBLIES SERIAL NO. 20001 & UP

Index No.	Part Number	Nomenclature	Units Per Assy
	60133A	Guard Assy - Clutch	1
1	62057	. Screw - Fil hd 1/4-28 x 3-1/2 in. lg.	1
2	52207C	. Nut - Bar adjusting	1
3	100004	. Washer - Plain 1/4 in.	1
4	105686	. Pin - Cotter	1
5	60134	. Guard - Clutch	1
6	50361	Bar - Flame hardened - 12 in.	1
	51403B	Bar - Hard faced - 12 in.	1
	52551	Bar - Flame hardened - 18 in.	1
	51405A	Bar - Hard faced - 18 in.	1
	51407A	Bar - Hard faced - 24 in.	1
	51409A	Bar - Hard faced - 30 in.	1
	50607	Laminated Bar - Flame hardened - 12 in.	1
	50606	Laminated Bar - Hard faced - 12 in.	1
	50347	Laminated Bar - Flame hardened - 18 in.	1
	50346	Laminated Bar - Hard faced - 18 in.	1
	50348	Laminated Bar - Hard faced - 24 in.	1
7		Typical McCulloch Chain Assy	1
8		. Master Pin	
9		. Rivet	
10		. Master Side Link	
11		. Side Link	
12		. Cutter - Left side	
13		. Cutter - Right side	
14		. Center Link	

TOOLS AND ACCESSORIES

Part Number	Nomenclature
* 51445A	Wrench and Screwdriver Combination
* 61390	Owner's Manual of Operating Instructions
56625B	Chain Maintenance Manual
61330	Kit - 5-Tooth Spike
61331	Kit - 4-Tooth Spike

* Items furnished with each saw.



The policy of McCulloch Corporation is one of continual improvement in design, manufacturing and engineering advancement wherever possible to assure still finer two-cycle power tools. Hence, specifications, equipment, colors, design and manufacturer's suggested list prices are subject to change without notice and McCulloch Corporation reserves the right to make such changes without prior notification or obligation to backfit or supply backfit components for units previously shipped from the factory.