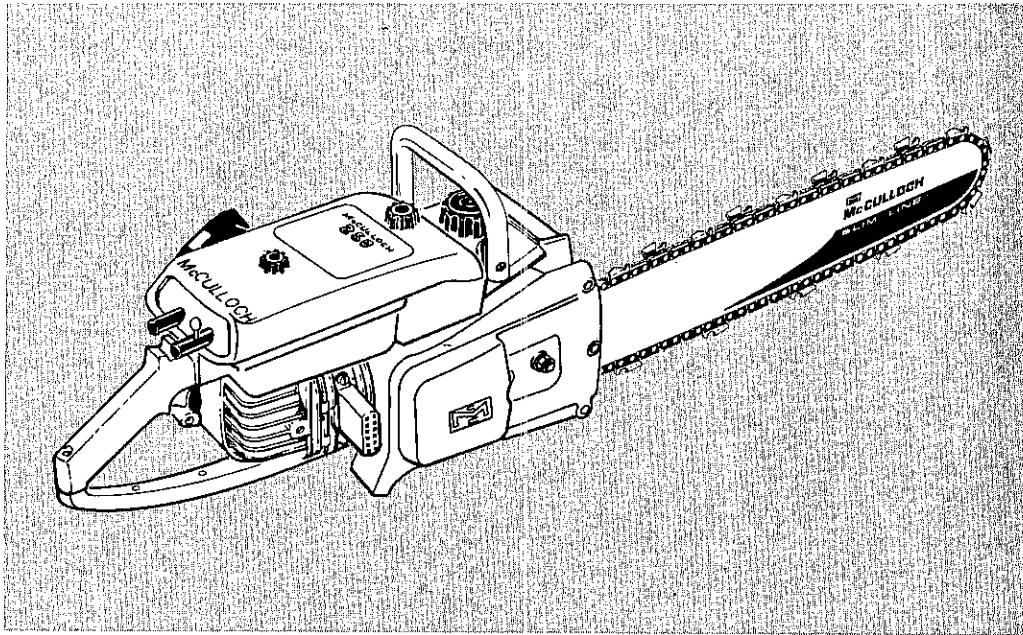


Model 250 Chain Saw

ILLUSTRATED PARTS LIST



February 1967

The following pages contain item-numbered illustrations of the service parts for this saw. Facing each illustration are lists which give the description and the quantity of each service part.

Part numbers will be found on the appropriate parts list sheet covering the serial number block of the particular saw. Locate the figure and item in this book, of the part in which you are interested. Then turn to the appropriate parts list sheet and following the figure and item number will be found the correct part number of the service part.

When changes in this parts list occur, either in the illustrations, in part numbers or in quantities used, these differences will be explained or shown on a superseding parts list sheet.

	Page
Figure 1. General Exploded View	2
Figure 2. Starter and Crankcase Cover	4
Figure 3. Oiler and Fuel Tank Assemblies	6
Figure 4. Cover and Airbox Assemblies	8
Figure 5. Carburetor	10
Figure 6. Powerhead	12
Figure 7. Clutch Guard, Bar and Chain	14



McCULLOCH

MODEL 250

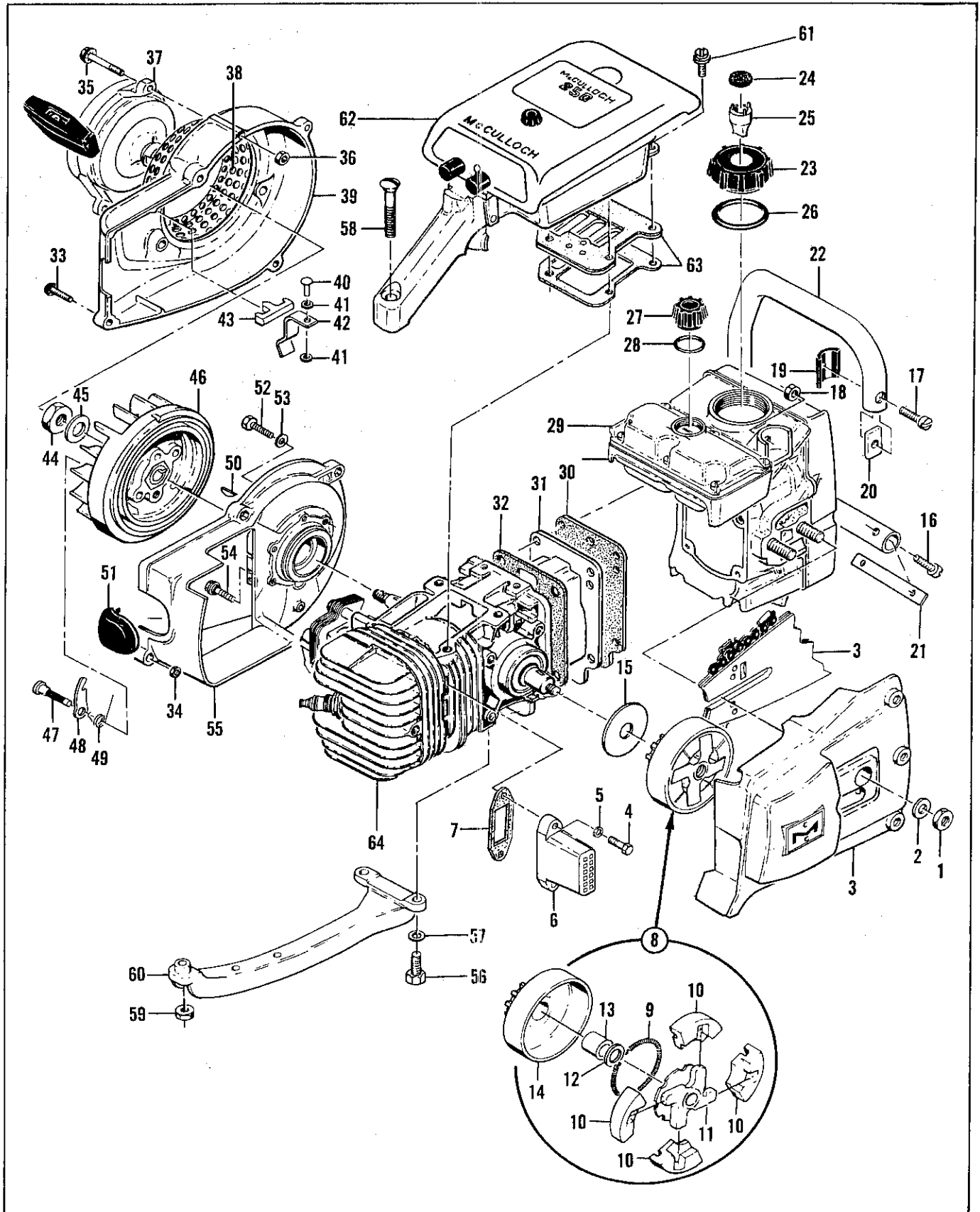


Figure 1. General Exploded View

FIGURE 1. GENERAL EXPLODED VIEW

Item No.	Description	Units Per Assy
1	Nut - Hex 3/8-24	2
2	Washer - Plain 3/8	2
3	Clutch Guard, Bar and Chain (See Figure 7)	1
4	Screw - Hex hd 10-24 x 3/4	2
5	Lockwasher - #10 Internal	2
6	Pipe - Exhaust	1
7	Gasket - Exhaust	1
8	Clutch and Sprocket, Drum and Bushing Assys	1
	Clutch Assy	1
9	. Spring - Clutch shoe	1
10	. Shoe - Clutch	4
11	. Rotor Assy - Clutch	1
12	Washer - Plain 7/16	1
	Sprocket, Drum and Bushing Assy	1
13	. Bushing	1
14	. Sprocket and Drum Assy	1
15	Washer - Sprocket Assy	1
16	Screw - Fil hd 1/4-20 x 7/8	2
17	Screw - Fil hd 1/4-20 x 1	1
18	Nut - Hex 1/4-20	3
19	Insulator - Frame	3
20	Saddle - Frame	1
21	Saddle - Frame	1
22	Frame	1
23	Cap - Fuel	1
24	. Filter - Fuel cap	1
25	. Valve - Fuel cap	1
26	"O" Ring	1
27	Cap - Oiler	1
28	"O" Ring	1
29	Oiler and Fuel Tank Assys (See Figure 3)	1
30	Gasket - Fuel tank	1

Item No.	Description	Units Per Assy
31	Cover - Crankcase bottom	1
32	Gasket - Bottom	1
33	Screw - 10-24 x 7/8 (Sems)	4
34	Nut - Hex 10-24	2
35	Screw - 10-24 x 7/8 (Sems)	3
36	Nut - Hex 10-24	3
37	Starter Assy (See Figure 2)	1
38	Guard - Sawdust	1
39	Fan Housing Assy	1
40	. Rivet - Oval hd 3/16 x 5/16	1
41	. Washer - Special	2
42	. Spring - Switch	1
43	. Button - Switch	1
44	Nut - Hex 7/16	1
45	Washer - Special	1
46	Flywheel and Pawl Assy	1
47	Pin - Pawl	2
48	Pawl - Starter	2
49	Spring - Pawl	2
50	Key - Woodruff #3	1
51	Cover Assy - Spark plug	1
52	Screw - Hex hd 10-24 x 3/4	4
53	Washer - Plain #10	3
54	Screw - Sealing	2
55	Crankcase Cover Assy (See Figure 2)	1
56	Screw - Hex hd 1/4-20 x 3/4	2
57	Washer - Plain 1/4	2
58	Screw - Oval hd 10-24 x 1-3/4	1
59	Nut - Hex 10-24	1
60	Brace - Handle	1
61	Screw - Hex hd 10-24 x 7/8 (Sems)	2
62	Cover and Airbox Assys (See Figure 4)	1
63	Reed Plate Assy and Insulator (See Figure 4)	1
64	Powerhead Assy (See Figure 6)	1

MODEL 250

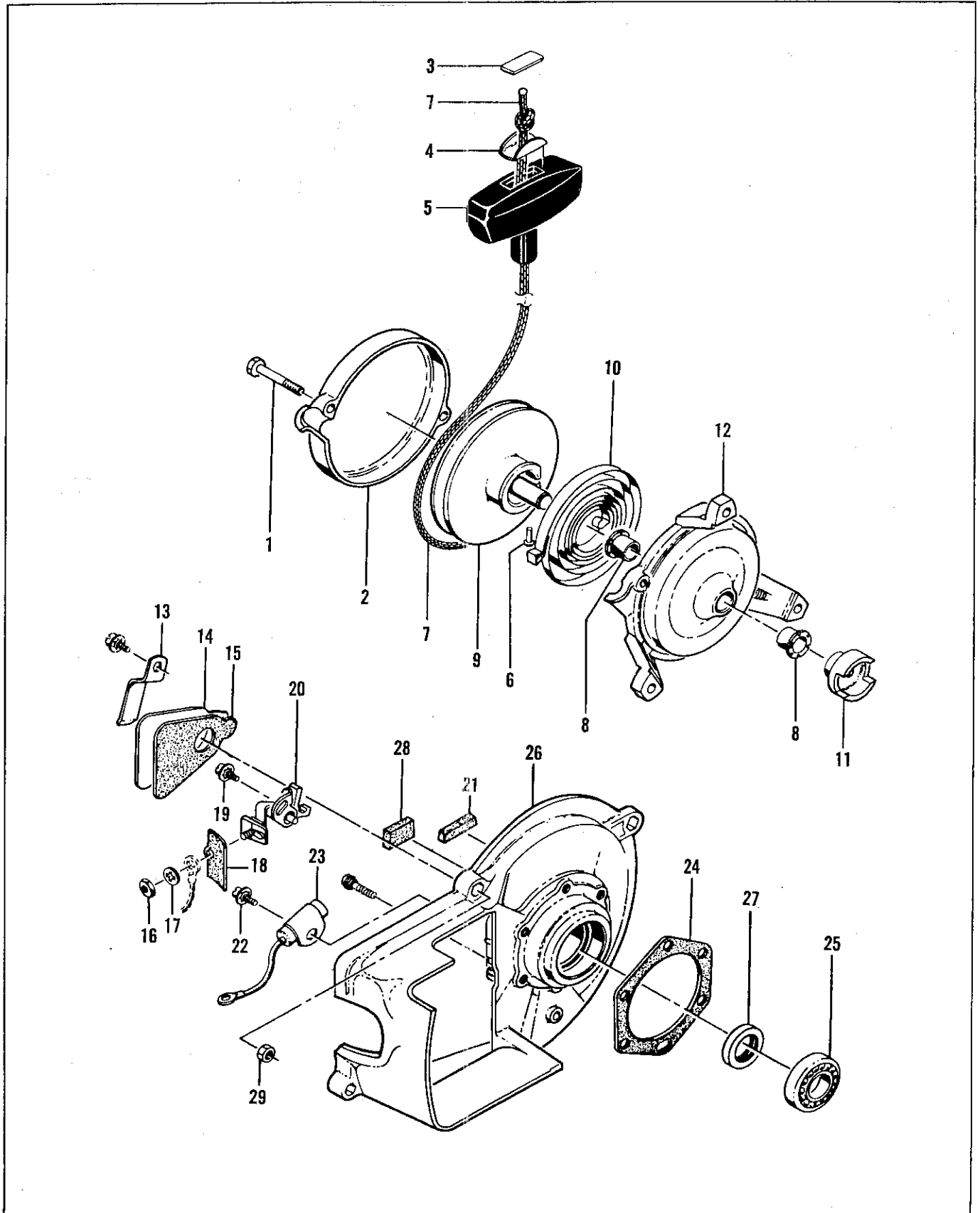


Figure 2. Starter and Crankcase Cover Assemblies

FIGURE 2. STARTER AND CRANKCASE COVER ASSEMBLIES

Item No.	Description	Units Per Assy
	Starter Assy	1
1	. Screw - 10-24 x 3/4	2
2	. Cover - Starter	1
3	. Plate - Starter handle	1
4	. Cup - Starter handle	1
5	. Handle - Starter	1
6	. Rivet	1
7	. Rope - Starter	1
8	. Bushing	2
9	. Drum - Starter	1
10	. Spring - Rewind	1
11	. Ratchet - Starter	1
12	. Base - Starter	1
13	Retainer - Breaker box cover	1
14	Cover - Breaker box	1

Item No.	Description	Units Per Assy
15	Gasket - Breaker box	1
16	Nut - Hex 8-32	1
17	Lockwasher - #8	1
18	Insulator - Breaker terminal	1
19	Screw - Hex hd 8-32 x 1/2 (Sems)	1
20	Breaker Assy	1
21	Felt - Breaker box	1
22	Screw - Hex hd 8-32 x 1/2 (Sems)	1
23	Condenser	1
24	Gasket - Crankcase	1
25	Bearing - Ball	1
26	Crankcase Cover Assy	1
27	. Seal - Oil	1
28	. Wiper - Felt	1
29	. Nut - Hex 10-24	2

MODEL 250

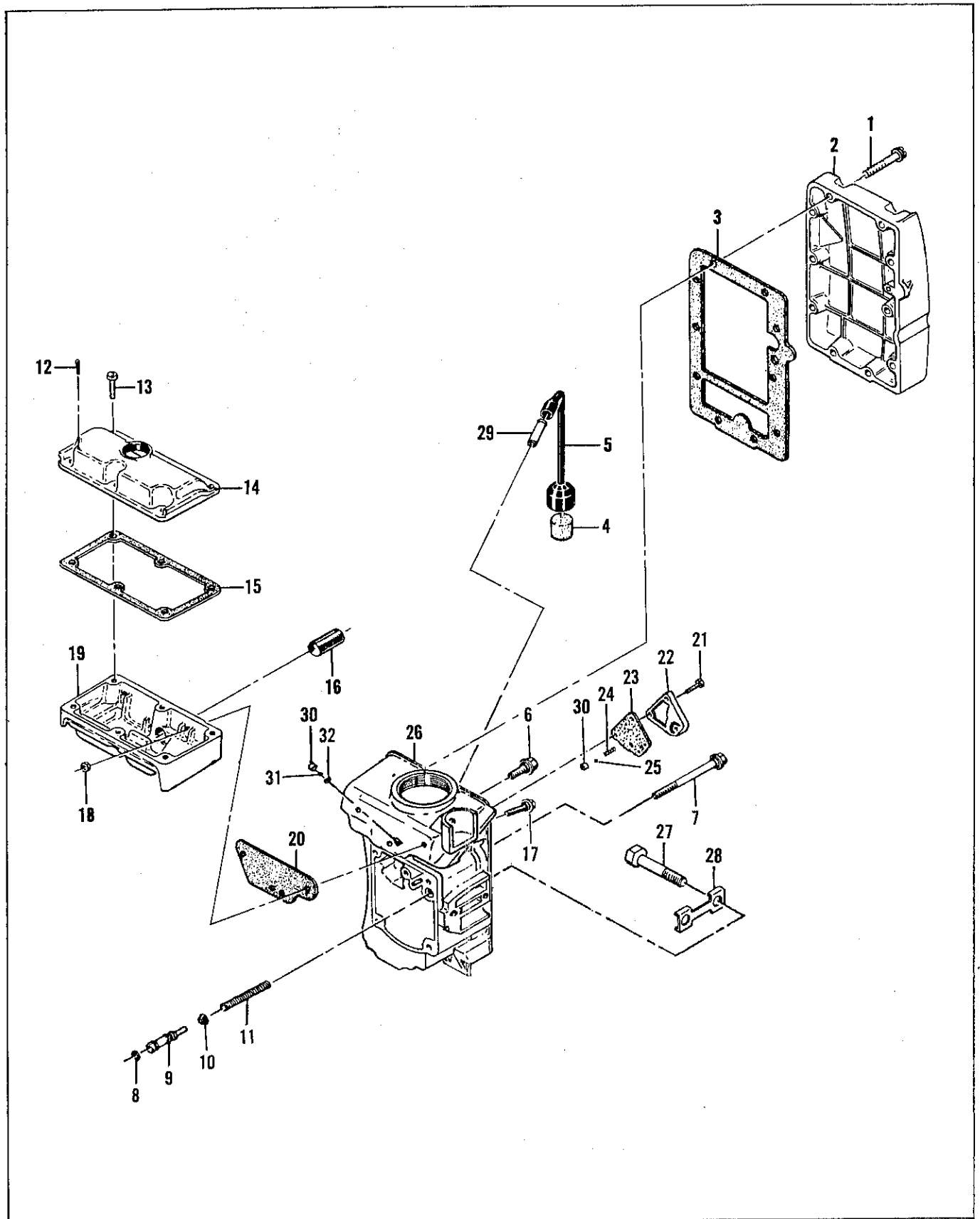


Figure 3. Oiler and Fuel Tank Assemblies

MODEL 250

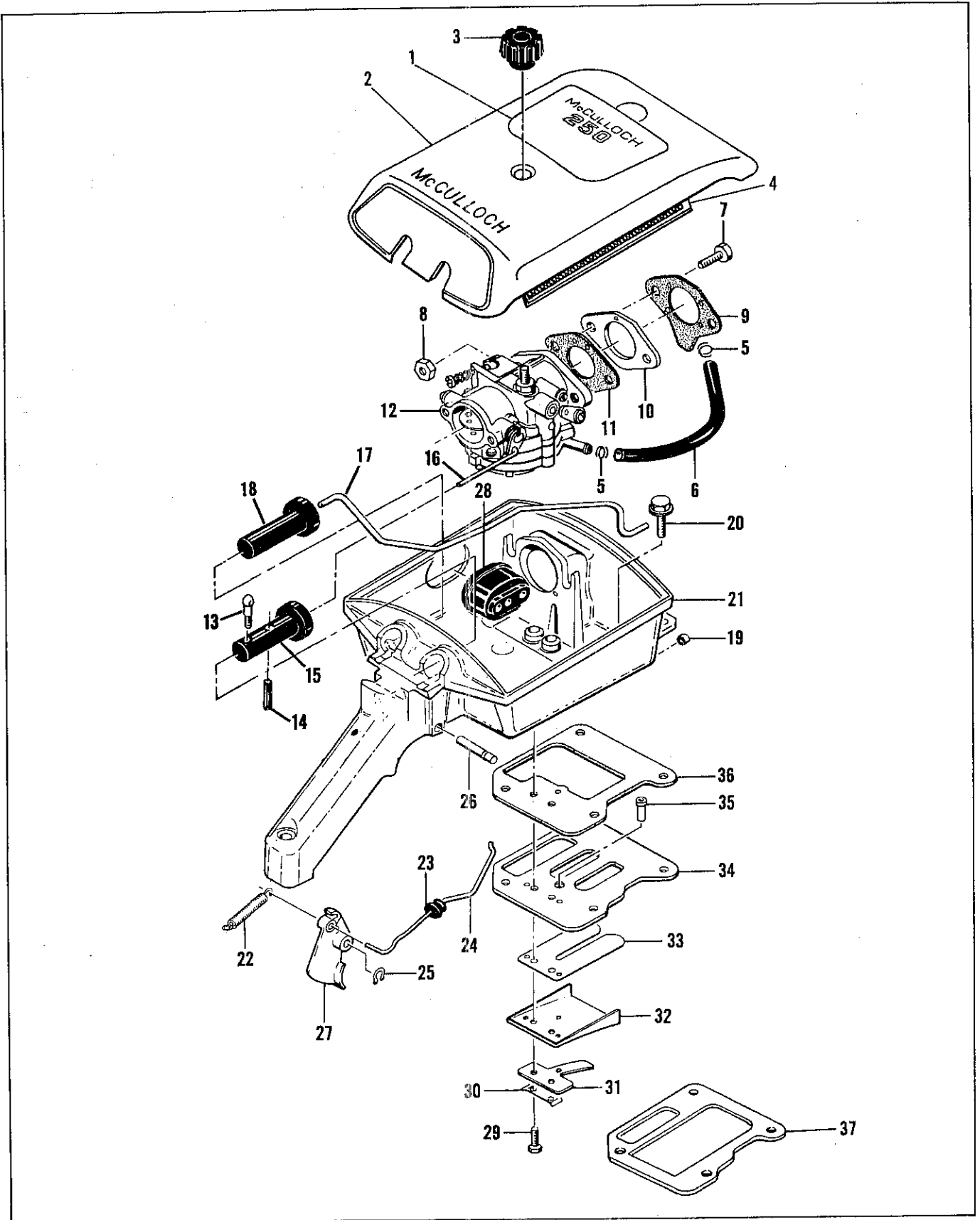


Figure 4. Cover and Airbox Assemblies

FIGURE 4. COVER AND AIRBOX ASSEMBLIES

Item No.	Description	Units Per Assy
1	Nameplate	1
2	Cover Assy - Air cleaner	1
3	. Knob - Air cleaner attaching	1
4	Screen - Air cleaner	1
5	Clamp - Fuel hose	2
6	Hose - Fuel	1
7	Screw - Hex hd 1/4-20 x 15/16	2
8	Nut - Hex 1/4-20	2
9	Gasket - Adapter to airbox	1
10	Adapter - Carburetor	1
11	Gasket - Carburetor	1
12	Carburetor Assy (See Figure 5)	1
13	Screw - Special	1
14	Pin - Roll	1
15	Button - Choke	1
16	Pushrod - Choke	1
17	Pushrod - Oiler	1
18	Button - Oiler	1
19	Washer - Felt	1

Item No.	Description	Units Per Assy
20	Screw - Hex hd 10-24 x 7/8 (Sems)	2
21	Airbox Assy	1
22	. Spring - Throttle	1
23	. Grommet - Throttle	1
24	. Rod - Throttle	1
25	. Retainer - Trigger pin	1
26	. Pin - Trigger	1
27	. Trigger	1
28	. Grommet - Carburetor control	1
29	. Screw - Hex hd 8-32 x 5/8	2
30	. Lockplate	1
31	. Clamp - Reed	1
32	. Deflector - Fuel	1
33	. Valve - Reed	1
34	. Plate - Reed	1
35	. Tube	1
36	. Gasket - Airbox	1
37	. Insulator - Reed plate	1

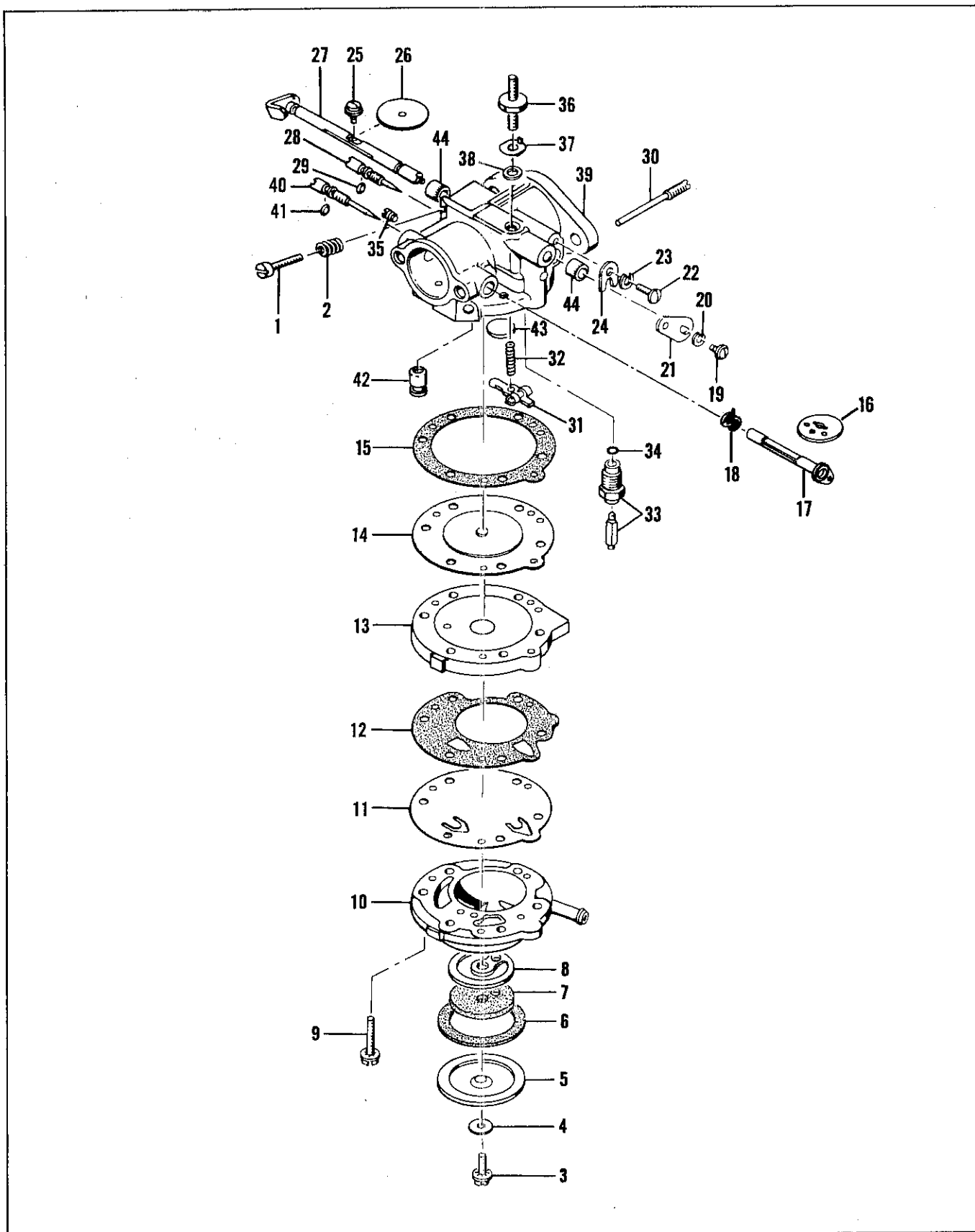


Figure 5. Carburetor

FIGURE 5. CARBURETOR

Item No.	Description	Units Per Assy
	Carburetor Assy	1
1	. Screw - Idle speed regulating	1
2	. Spring - Idle speed regulating screw	1
3	. Screw - Fuel filter cover	1
4	. Gasket - Fuel filter cover	1
5	. Cover - Fuel filter	1
6	. Gasket - Fuel filter cover	1
7	. Filter Element - Fuel	1
8	. Gasket - Fuel filter	1
9	. Screw - Fuel pump body	6
10	. Body - Fuel pump	1
11	. Diaphragm - Fuel pump	1
12	. Gasket - Fuel pump	1
13	. Cover - Diaphragm	1
14	. Diaphragm Assy	1
15	. Gasket - Diaphragm	1
16	. Shutter - Choke	1
17	. Shaft and Lever - Choke	1
18	. Spring - Choke shaft return	1
19	. Screw - Throttle governor lever	1
20	. Lockwasher	1
21	. Lever - Throttle governor	1
22	. Screw - Throttle shaft clip	1
23	. Lockwasher	1

Item No.	Description	Units Per Assy
24	. Clip - Throttle shaft	1
25	. Screw - Throttle shutter	1
26	. Shutter - Throttle	1
27	. Throttle Shaft and Lever	1
28	. Needle Assy - Idle adjustment	1
29	. . "O" Ring	1
30	. Screw - Inlet control lever pinion	1
31	. Lever - Inlet control	1
32	. Spring - Inlet tension	1
33	. Seat and Needle Assy	1
34	. Gasket - Inlet seat	1
35	. Drain Screw - Diaphragm chamber	1
36	. Stud - Air cleaner attachment	1
37	. Tab - Locking	1
38	. Gasket - Stud	1
39	. Body and Needle Assy - Carburetor	1
40	. . Needle Assy - Main adjustment	1
41	. . . "O" Ring	1
42	. . Check Valve	1
43	. . Plug - Welch	1
44	. . Bushing - Shaft	2
	Gasket and Packing Set	1
	Repair Parts Kit	1

MODEL 250

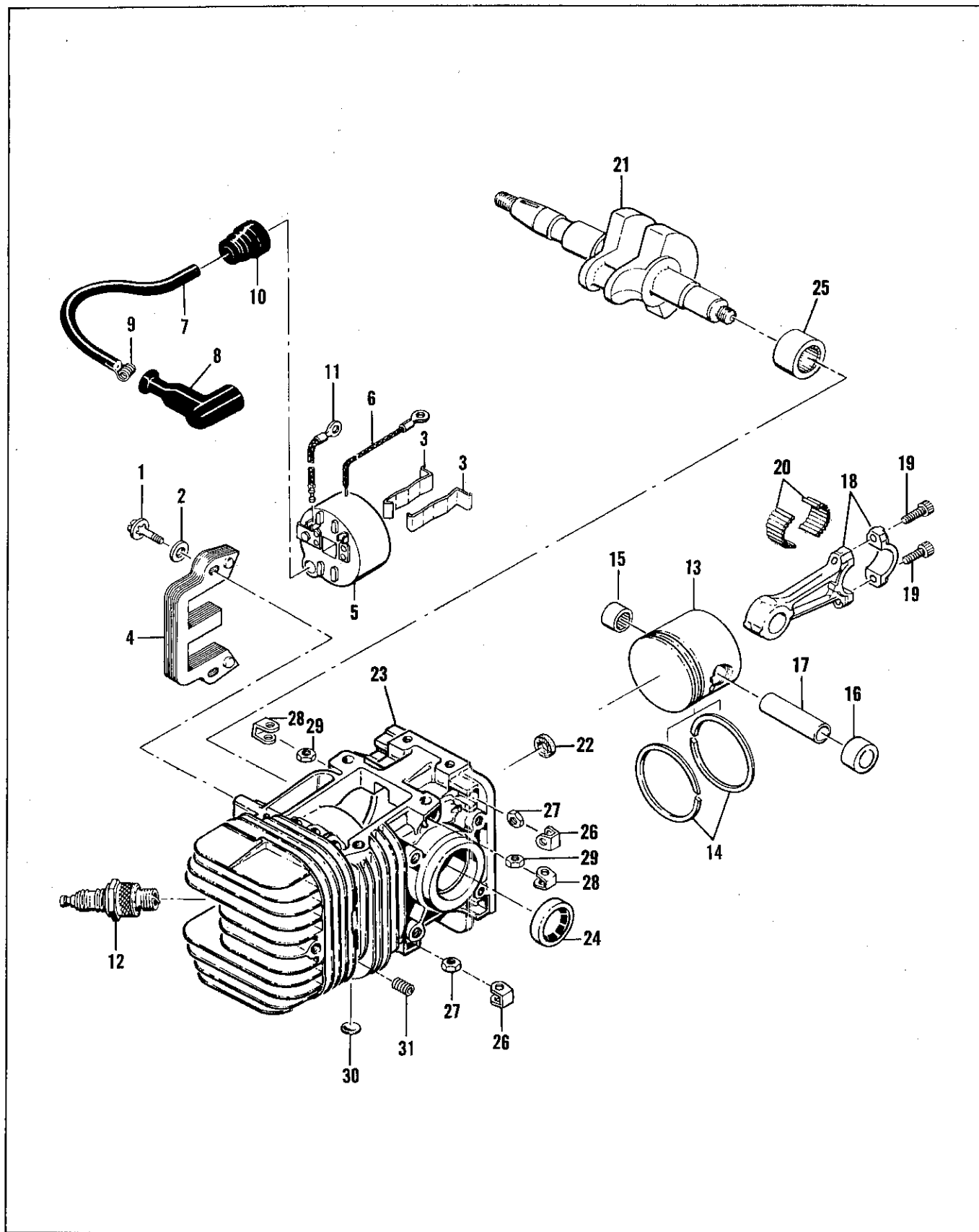


Figure 6. Powerhead

FIGURE 6. POWERHEAD

Item No.	Description	Units Per Assy
1	Screw - Hex hd 10-24 x 7/8	2
2	Washer - Plain #10	2
3	Retainer - Coil	2
4	Lamination Assy	1
5	Coil and Terminal Assy	1
6	. Wire Assy - Ground	1
7	. Wire Assy - Spark plug	1
8	. . Boot - Spark plug	1
9	. . Connector	1
10	. Nipple - Spark plug wire	1
11	Wire Assy - Primary	1
12	Spark Plug - 14 mm	1
13	Piston Assy (For service replacement)	1
14	. Ring Set - Piston (Set of 2 rings)	1
15	. Bearing - Needle	1
16	. Bearing - Needle (closed end)	1

Item No.	Description	Units Per Assy
17	Pin - Piston	2
18	Rod Assy - Connecting	1
19	. Screw - Socket hd 10-32 x 0.552	2
20	. Roller - Needle	24
21	Crankshaft	1
22	Washer - Felt	1
23	Cylinder Assy - Crankcase	1
24	. Seal - Oil	1
25	. Bearing - Needle	1
26	. Retainer - Nut	6
27	. Nut - Hex 1/4-20	6
28	. Retainer - Nut	2
29	. Nut - Hex 10-24	2
30	. Plug - Expansion	3
31	. Insert - Tap-Lok	2

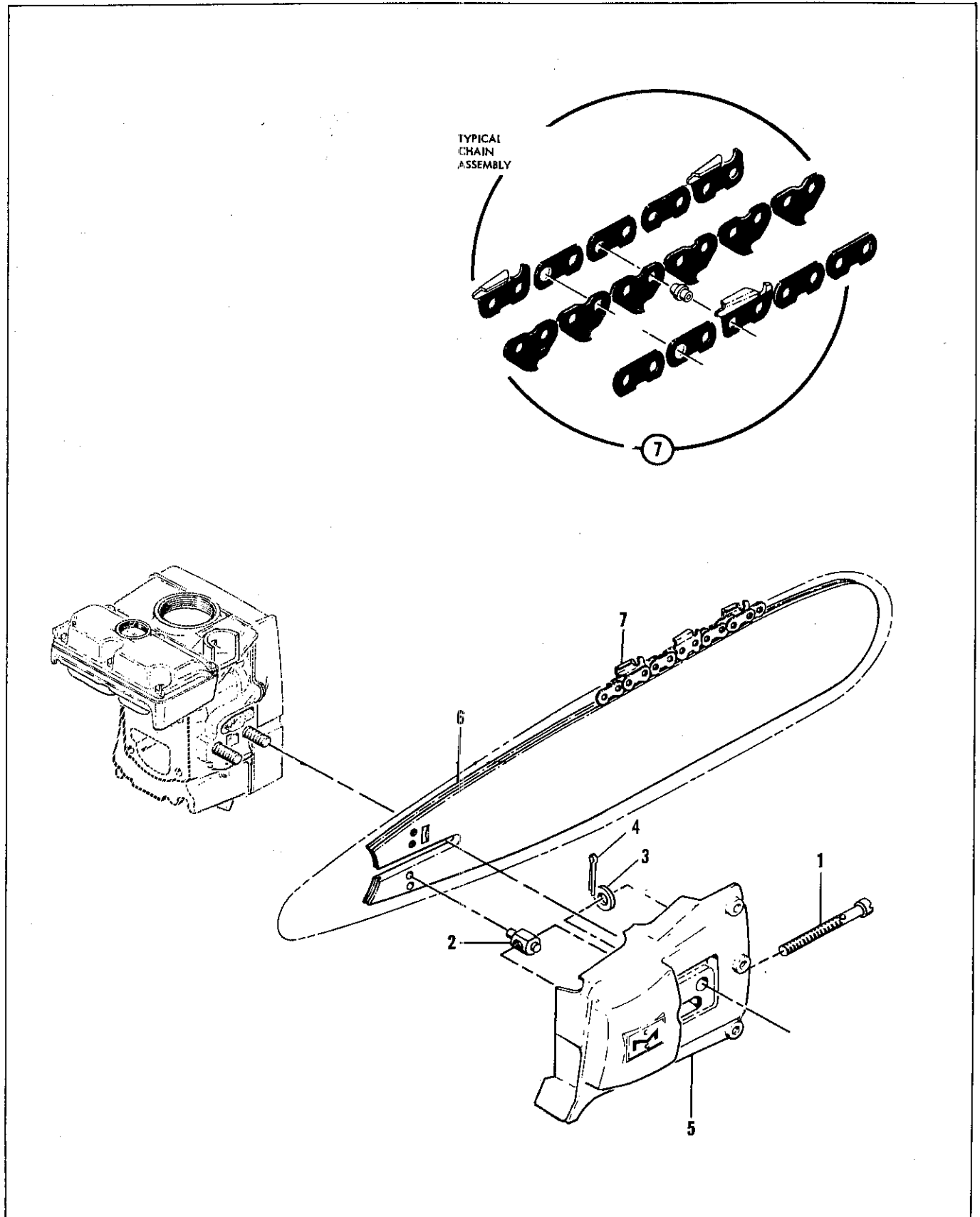


Figure 7. Clutch Guard, Bar and Chain

FIGURE 7. CLUTCH GUARD, BAR AND CHAIN

Item No.	Description	Units Per Assy
	Guard Assy - Clutch	1
1	. Screw - Fil hd 1/4-28 x 3.47	1
2	. Nut - Bar adjusting	1
3	. Washer - Plain 1/4	1

Item No.	Description	Units Per Assy
4	. Pin - Cotter	1
5	. Guard - Clutch	1
6	Bar	1
7	Chain	1

ACCESSORIES

Item No.	Description
1	Wrench and Screwdriver - Combination
2	Owner's Manual
3	Kit - 4-tooth spike
4	Kit - 5-tooth spike
5	Piston Assy - 0.010 in. oversize

Item No.	Description
6	. Ring Set - 0.010 in. oversize
7	Piston Assy - 0.020 in. oversize
8	. Ring Set - 0.020 in. oversize
9	Piston Assy - 0.030 in. oversize
10	. Ring Set - 0.030 in. oversize

Model 250

Serial Numbers Prefixed 1-

Figure and Item numbers are referenced to the Illustrated Parts List, P/N 66348 unless otherwise indicated on this parts list sheet. Numbers in black circles refer to notes at the bottom of the page. Numbers in parenthesis following the part number indicate a quantity change from the illustrated parts list.

FIG. & ITEM	PART NUMBER	NOMENCLATURE	FIG. & ITEM	PART NUMBER	NOMENCLATURE	FIG. & ITEM	PART NUMBER	NOMENCLATURE
1-1	103729	Nut	1-59	101191	Nut	3-21	103814	Screw
1-2	100006	Washer	1-60	50041	Brace	3-22	62339A	Plate
1-3	Fig. reference		1-61	110127	Screw	3-23	62338B	Gasket
1-4	102289	Screw	1-62	Fig. reference		3-24	63034	Spring
1-5	103100	Lockwasher	1-63	Fig. reference		3-25	100071	Ball
1-6	50115	Pipe	1-64	Fig. reference		3-26	62154A	Fuel Tank
1-7	53652	Gasket				3-27	61437	Bolt
1-8		Clutch & Spkt				3-28	51439	Lockplate
1-	50060B	Clutch Assy	2-	60130	Starter Assy	3-29	28042	Tube
1-9	51468A	Spring	2-1	104396	Screw	3-30	62216	Seat
1-10	51464A	Shoe	2-2	60647	Cover	3-31	100071	Ball
1-11	50144B	Rotor Assy	2-3	57232	Plate	3-32	110327	Ring
1-12	101270	Washer	2-4	57231	Cup			
1-	50129A	Sprocket	2-5	57230	Handle			
1-13	50128	Bushing	2-6	101136	Rivet	4-1	61931A	Nameplate
1-14	51775B	Spkt & Drum	2-7	28716	Rope	4-2	60342	Cover Assy
1-15	50132	Washer	2-8	57535	Bushing	4-3	60242	Knob
1-16	102356	Screw	2-9	57792	Drum	4-4	55497	Screen
1-17	103267	Screw	2-10	51665	Spring	4-5	50742	Clamp
1-18	101143	Nut	2-11	57790	Ratchet	4-6	50097	Hose
1-19	50062	Insulator	2-12	60646	Base	4-7	53539	Screw
1-20	57133	Saddle	2-13	50671	Retainer	4-8	103242	Nut
1-21	62233	Saddle	2-14	50588A	Cover	4-9	50123B	Gasket
1-22	63349	Frame	2-15	50589A	Gasket	4-10	50686A	Adapter
1-23	55934B	Cap	2-16	100251	Nut	4-11	55519A	Gasket
1-24	55063	Filter	2-17	100057	Lockwasher	4-12	Fig. reference	
1-25	53766A	Valve	2-18	50381A	Insulator	4-13	61822	Screw
1-26	101348	"O" Ring	2-19	103672	Screw	4-14	101556	Pin
1-27	57129A	Cap	2-20	50076A	Breaker Assy	4-15	50777B	Button
1-28	101148	"O" Ring	2-21	50664	Felt	4-16	57134	Pushrod
1-29	Fig. reference		2-22	103672	Screw	4-17	57866A	Pushrod
1-30	60601A	Gasket	2-23	50074	Condenser	4-18	50591B	Button
1-31	53399E	Cover	2-24	51240	Gasket	4-19	55449A	Washer
1-32	58166A	Gasket	2-25	100824	Bearing	4-20	110127	Screw
1-33	104815	Screw	2-26	57126A	Crankcase	4-21	62488	Airbox Assy
1-34	101326	Nut	2-27	50663	Seal	4-22	36499	Spring
1-35	104815	Screw	2-28	54184	Wiper	4-23	60237	Grommet
1-36	101191	Nut	2-29	101326	Nut	4-24	50684	Rod
1-37	Fig. reference					4-25	104501	Retainer
1-38	50581A	Guard	3-1	104396	Screw	4-26	50507	Pin
1-39	57184B	Housing	3-2	60781	Cover	4-27	50091B	Trigger
1-40	103819	Rivet	3-3	50034B	Gasket	4-28	57105	Grommet
1-41	24236	Washer	3-4	50124A	Filter	4-29	103740	Screw
1-42	50818	Spring	3-5	50082	Hose	4-30	51480	Lockplate
1-43	50817	Button	3-6	57840	Screw	4-31	57658A	Clamp
1-44	101179	Nut	3-7	50569	Screw	4-32	53686A	Deflector
1-45	101270	Washer	3-8	101056	"O" Ring	4-33	48593	Valve
1-46	58274B	Flywheel	3-9	63122	Piston	4-34	53685C	Plate
1-47	36144B	Pin	3-10	24104A	Cup	4-35	63067	Tube
1-48	24093	Pawl	3-11	18349A	Spring	4-36	57145A	Gasket
1-49	50582	Spring	3-12	100010	Pin	4-37	62834	Insulator
1-50	103879	Key	3-13	104395	Screw			
1-51	57565	Cover Assy	3-14	57114A	Cover	5-	66346	Carburetor
1-52	102289	Screw	3-15	57152	Gasket	5-1	*50799	Screw
1-53	102189	Washer	3-16	57279	Screen	5-2	*51705	Spring
1-54	55494	Screw	3-17	55494	Screw	5-3	*50797	Screw
1-55	Fig. reference		3-18	101326	Nut	5-4	50798	Gasket
1-56	100882	Screw	3-19	57112A	Tank	5-5	50796	Cover
1-57	100004	Washer	3-20	57147	Gasket			
1-58	104435	Screw						

Continued

FIG. & ITEM	PART NUMBER	NOMENCLATURE	FIG. & ITEM	PART NUMBER	NOMENCLATURE	FIG. & ITEM	PART NUMBER	NOMENCLATURE
5-6	51704	Gasket	5-38	63945	Gasket	6-22	55449A	Washer
5-7	*53717	Filter Element	5-39	66230	Body & Needle	6-23	62481	Cylinder
5-8	53565	Gasket	5-40	66405	Needle Assy	6-24	104128	Seal
5-9	51597	Screw	5-41	51703	"O" Ring	6-25	104129	Bearing
5-10	50670	Body	5-42	65611	Check Valve	6-26	18556A	Retainer
5-11	*66401	Diaphragm	5-43	*51583	Plug	6-27	105394	Nut
5-12	51594A	Gasket	5-44	51715	Bushing	6-28	28053	Retainer
5-13	51592	Cover	5-	*50806	Gasket & Pack.	6-29	101326	Nut
5-14	*51590A	Diaphragm	5-	66422	Repair Parts	6-30	110179	Plug
5-15	51591A	Gasket				6-31	110034	Insert
5-16	53813	Shutter						
5-17	53814	Shaft & Lever	6-1	104815	Screw			
5-18	*51586	Spring	6-2	102189	Washer	7-	60133A	Guard Assy
5-19	*51719	Screw	6-3	51253	Retainer	7-1	62057	Screw
5-20	*100261	Lockwasher	6-4	51251	Lamination	7-2	52207C	Nut
5-21	51718	Lever	6-5	55949A	Coil & Term.	7-3	100004	Washer
5-22	*51717	Screw	6-6	101883	Wire Assy	7-4	105686	Pin
5-23	*100252	Lockwasher	6-7	52547	Wire Assy	7-5	60134	Guard
5-24	51716	Clip	6-8	55060	Boot	7-6		Bar
5-25	*51721	Screw	6-9	55061	Connector			
5-26	51720	Shutter	6-10	55617	Nipple			
5-27	50803A	Throttle Shaft	6-11	57225	Wire Assy			
5-28	*51702	Needle Assy	6-12		Spark Plug	1	*51445A	Wrench
5-29	51703	"O" Ring	6-13	53941A	Piston Assy	2	*61390	Manual
5-30	*51710	Screw	6-14	55123	Ring Set	3	61331	Kit - Spike
5-31	*51709	Lever	6-15	101206	Bearing	4	61330	Kit - Spike
5-32	*66404	Spring	6-16	104378	Bearing	5	53942A	Piston Assy
5-33	*51707A	Seat & Needle	6-17	62831	Pin	6	55124	Ring Set
5-34	51708	Gasket	6-18	47903	Rod Assy	7	53943A	Piston Assy
5-35	51589	Drain Screw	6-19	60210A	Screw	8	55125	Ring Set
5-36	50785	Stud	6-20	102742	Roller	9	53944A	Piston Assy
5-37	63026	Tab - Locking	6-21	50659A	Crankshaft	10	55126	Ring Set

NOTE

* Indicates part in Repair Kit #66422

ACCESSORY ITEMS

1	*51445A	Wrench
2	*61390	Manual
3	61331	Kit - Spike
4	61330	Kit - Spike
5	53942A	Piston Assy
6	55124	Ring Set
7	53943A	Piston Assy
8	55125	Ring Set
9	53944A	Piston Assy
10	55126	Ring Set

McCULLOCH



• MANUFACTURING • SALES • SERVICE •

McCULLOCH CORPORATION
6101 WEST CENTURY BLVD., LOS ANGELES, CALIFORNIA 90045

McCULLOCH OF CANADA, LTD.
77 BELFIELD ROAD, REXDALE, ONTARIO, CANADA

McCULLOCH INTERNATIONAL, INC.
POSTBUS 10, MALINES, BELGIUM
G.P.O. BOX 879, HONG KONG, B.C.C.

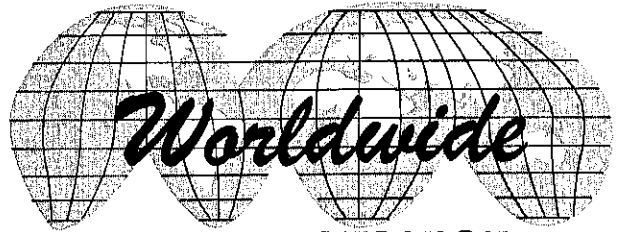
McCULLOCH OF AUSTRALIA PTY., LTD.
P.O. BOX 165, SOUTH GRANVILLE, N.S.W., AUSTRALIA

McCULLOCH INTERNATIONAL (U.S.), INC.
P.O. BOX 45466 LOS ANGELES, CALIFORNIA, U.S.A.

66600



McCULLOCH



● MANUFACTURING ● SALES ● SERVICE ●

McCULLOCH CORPORATION

6101 WEST CENTURY BLVD., LOS ANGELES, CALIFORNIA 90045

McCULLOCH OF CANADA, LTD.

77 BELFIELD ROAD, REXDALE, ONTARIO, CANADA

McCULLOCH INTERNATIONAL, INC.

POSTBUS 10, MALINES, BELGIUM
G.P.O. BOX 879, HONG KONG, B.C.C.

McCULLOCH OF AUSTRALIA PTY., LTD.

P.O. BOX 165, SOUTH GRANVILLE, N.S.W., AUSTRALIA

McCULLOCH INTERNATIONAL (U.S.), INC.

P.O. BOX 45466 LOS ANGELES, CALIFORNIA, U.S.A.