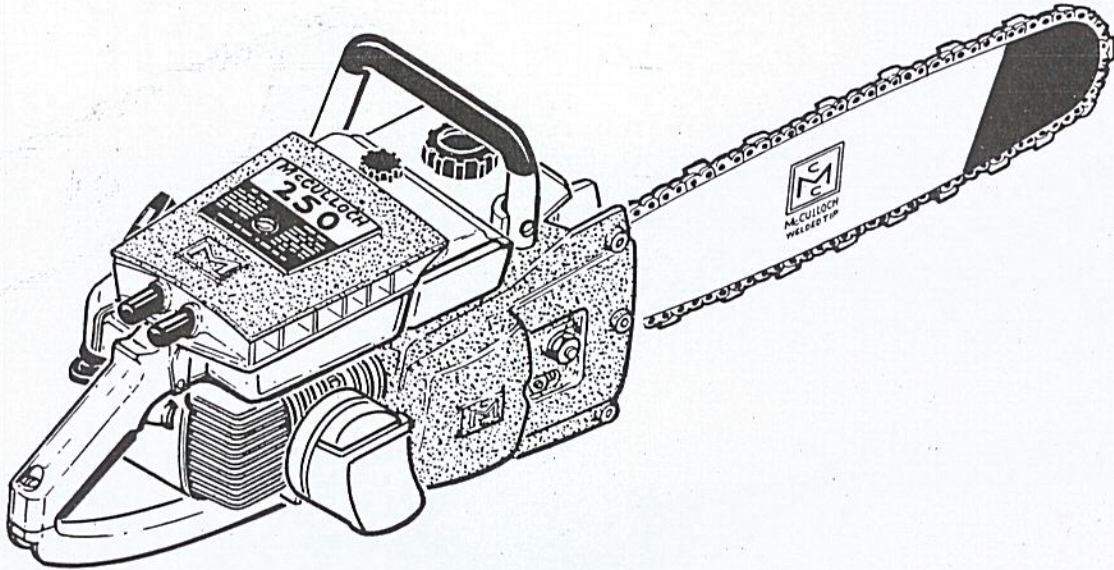


# ILLUSTRATED PARTS LIST

JANUARY 1963



The following pages contain an illustrated parts list for the Model 250 Chain Saw. Due to small differences between saws, it is important that the Serial Number of the saw be included whenever spare parts are ordered. This will assure receiving the proper parts.

	Page
Figure 1. Engine Exploded View - General .....	2
Figure 2. Starter and Crankcase Cover Assemblies ....	4
Figure 3. Oiler Tank and Fuel Tank Assemblies .....	6
Figure 4. Cover and Airbox Assemblies .....	8
Figure 5. McCulloch Carburetor Assembly .....	10
Figure 6. Powerhead Assembly .....	12
Figure 7. Bar, Chain and Clutch Guard Assembly .....	14



**McCULLOCH CORPORATION**  
8101 West Century Boulevard,  
Los Angeles 45, California

# MODEL 250

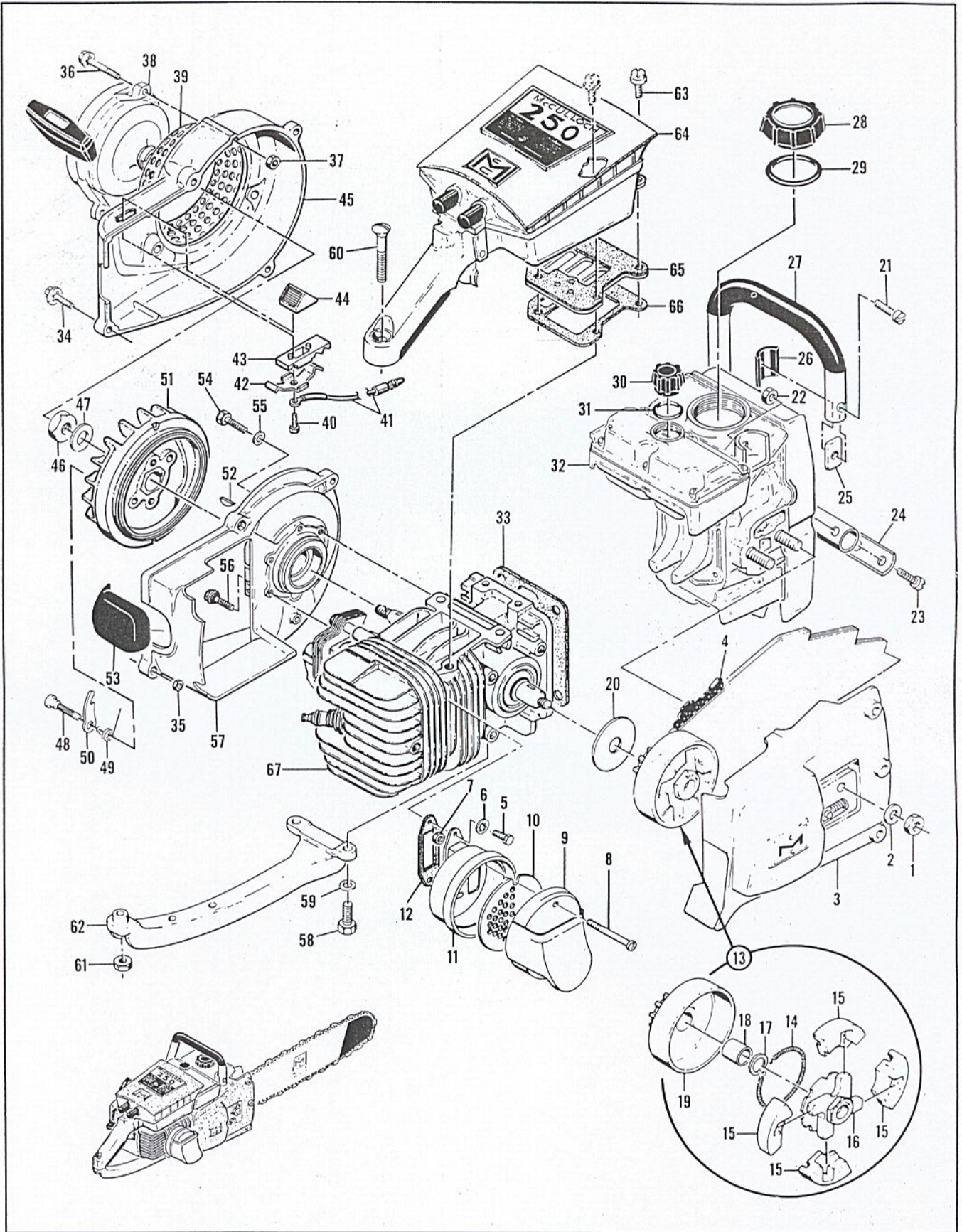


Figure 1. Engine Exploded View - General

FIGURE 1. ENGINE EXPLODED VIEW—GENERAL

Index No.	Part Number	Nomenclature	Units Per Assy
1	103729	Nut - Hex 3/8-24	2
2	100006	Washer - Plain 3/8 inch	2
3		Guard Assy (See figure 7)	1
4		Bar and Chain Assy (See figure 7)	1
5	102388	Screw - Hex hd 10-24 x 5/8 in. lg.	2
6	103100	Lockwasher - No. 10 internal	2
	51966	Muffler Assy	1
7	101191	. Nut - Hex 10-24	2
8	103361	. Screw - Fil hd 10-24 x 1-5/8 in. lg.	2
9	51975	. Top Assy - Muffler	1
10	51968	. Baffle - Muffler	1
11	51975	. Bottom Assy - Muffler	1
12	36093A	Gasket - Muffler	1
13		Clutch, Sprocket, Drum and Bearing Assy	1
	50060B	Clutch Assy	1
14	51468A	. Spring - Clutch	1
15	51464A	. Shoe - Clutch	4
16	50144A	. Rotor Assy - Clutch	1
17	53267	Washer - Clutch	1
	50129A	Sprocket, Drum and Bearing Assy	1
18	50128	. Bushing	1
19	51775B	. Sprocket and Drum Assy	1
20	50132	Washer - Sprocket Assy	1
21	100416	Screw - Fil hd 1/4-20 x 1 in. lg.	1
22	101143	Nut - Hex 1/4-20	3
23	102130	Screw - Hex hd 1/4-20 x 1-1/2 in. lg.	2
24	50215	Clamp - Frame	1
25	57133	Saddle - Frame	1
26	50062	Insulator - Frame	3
X 27	53559	Frame and Grip Assy	1
28	55934B	Cap - Fuel tank	1
29	101348	"O" Ring	1
30	57129	Cap - Oil filler	1
31	101148	"O" Ring	1
32		Oiler Tank and Fuel Tank Assy (See figure 3)	1
33	58166A	Gasket - Bottom	1
34	104815	Screw - Hex hd 10-24 x 7/8 in. lg. (SEMS)	4
20X 35	101191	Nut - Hex 10-24	2
36	104815	Screw - Hex hd 10-24 x 7/8 in. lg. (SEMS)	3
37	101191	Nut - Hex 10-24	3
38		Starter Assy (See figure 2)	1
39	50581A	Guard - Sawdust	1
	53488	Fan Housing Assy	1
40	110055	. Screw - Fil hd 8-32 x 3/8 in. lg. (SEMS)	1
41	53490	. Wire Assy - Stop switch	1
42	59592	. Contact - Switch	1
43	59591	. Base - Switch	1
44	57718	. Button - Switch	1
X 45		. Housing - Fan (Order Fan Housing Assy #53488)	1
46	101179	Nut - Hex 7/16	1
47	101270	Washer - Special	1
48	36144B	Pin - Starter pawl	2
49	50582	Spring - Pawl	2
50	24093	Pawl - Starter	2
51	48785A	Flywheel Assy	1
52	100199	Key - Woodruff #3	1
53	57565	Cover Assy - Spark plug	1
54	102289	Screw - Hex hd 10-24 x 3/4 in. lg.	4
55	102189	Washer - Plain #10	3
56	55494	Screw - Sealing	2
57		Crankcase Cover Assy (See figure 2)	1
58	100882	Screw - Hex hd 1/4-20 x 3/4 in. lg.	2
59	100004	Washer - Plain 1/4 in.	2

This list is continued on page 5

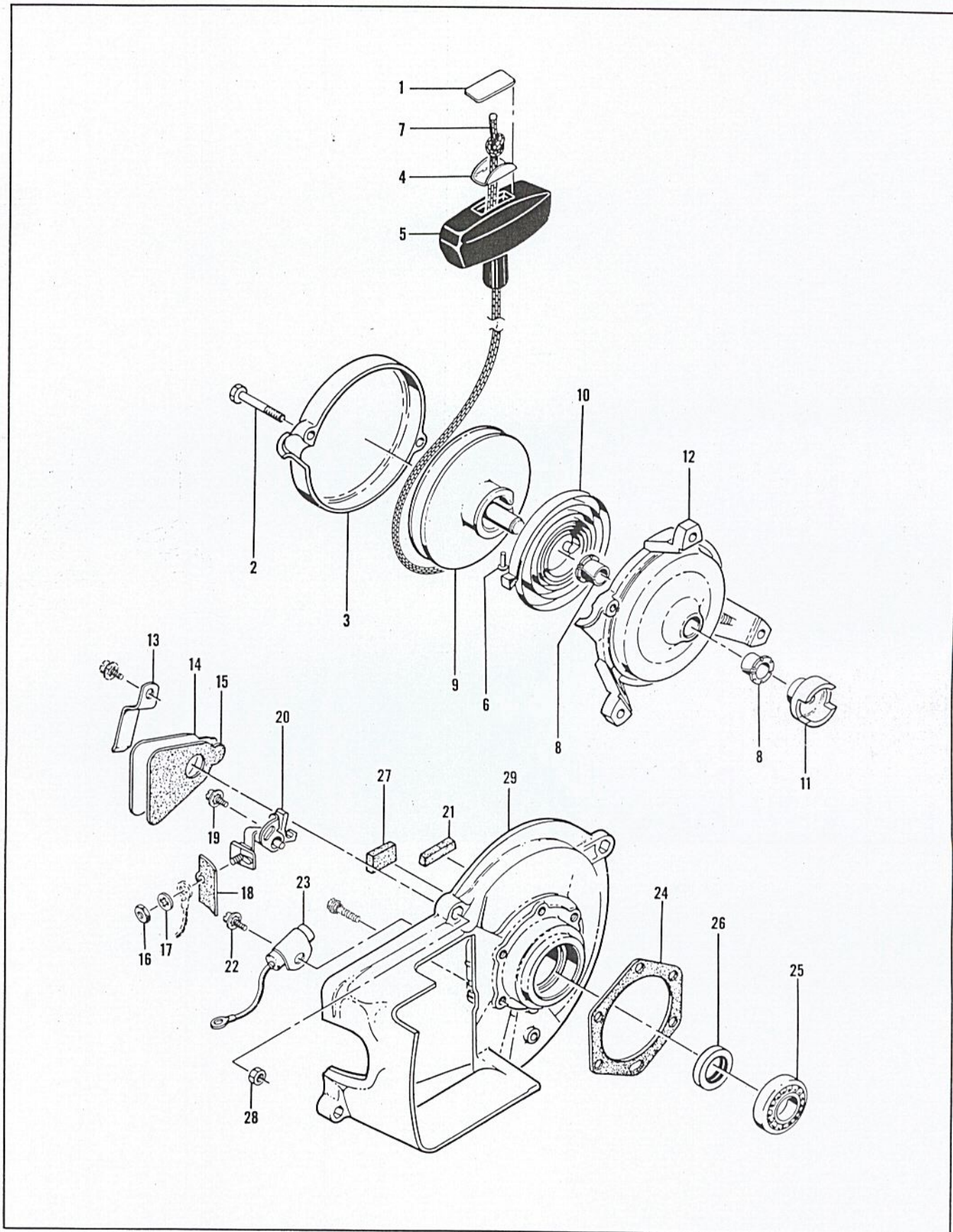


Figure 2. Starter and Crankcase Cover Assemblies

FIGURE 1. ENGINE EXPLODED VIEW—GENERAL (CONT)

Index No.	Part Number	Nomenclature	Units Per Assy
60	104335	Screw - Oval hd 10-24 x 1-3/4 in. lg. ....	1
61	101191	Nut - Hex 10-24 .....	1
62	50041	Brace - Handle .....	1
63	104138	Screw - Hex hd 10-24 x 7/8 in. lg. ....	4
64		Cover and Airbox Assy (See figure 4) .....	1
65		Reed Plate Assy (See figure 4) .....	1
66	57657	Insulator - Reed plate .....	1
67		Powerhead Assy (See figure 6) .....	1

FIGURE 2. STARTER AND CRANKCASE COVER ASSEMBLIES

Index No.	Part Number	Nomenclature	Units Per Assy
1	57232	Plate - Starter handle .....	1
	57117B	Starter Assy .....	1
2	104396	. Screw - Pan hd 10-24 x 3/4 in. lg. ....	2
3	57102	. Cover - Starter .....	1
4	57231	. Cup - Starter handle .....	1
5	57230	. Handle - Starter .....	1
6	101136	. Rivet .....	1
7	28716	. Rope - Starter .....	1
8	57535	. Bushing - Starter base .....	2
9	57792	. Drum - Starter .....	1
10	51665	. Spring - Rewind .....	1
11	57790	. Ratchet - Starter .....	1
12	57103	. Base - Starter .....	1
13	50671	Retainer - Breaker cover .....	1
14	50588	Cover - Breaker box .....	1
15	50589	Gasket - Breaker box .....	1
16	100251	Nut - Hex 8-32 .....	1
17	100057	Lockwasher - No. 8 internal .....	1
18	50381A	Insulator - Breaker terminal .....	1
19	103672	Screw - Hex hd 8-32 x 1/2 in. lg. (SEMS) .....	1
20	50076A	Breaker Assy .....	1
21	50664	Felt Seal - Breaker box drain .....	1
22	103672	Screw - Hex hd 8-32 x 1/2 in. lg. (SEMS) .....	1
23	50074	Condenser .....	1
24	51240	Gasket - Crankcase end cover .....	1
25	100824	Bearing - Ball .....	1
	57126A	Crankcase Cover Assy .....	1
26	50663	. Seal - Oil .....	1
27	54184	. Wiper - Felt .....	1
28	101326	. Nut - Hex 10-24 .....	2
29		. Cover - Crankcase ..... (Order Crankcase Assy #57126A)	1

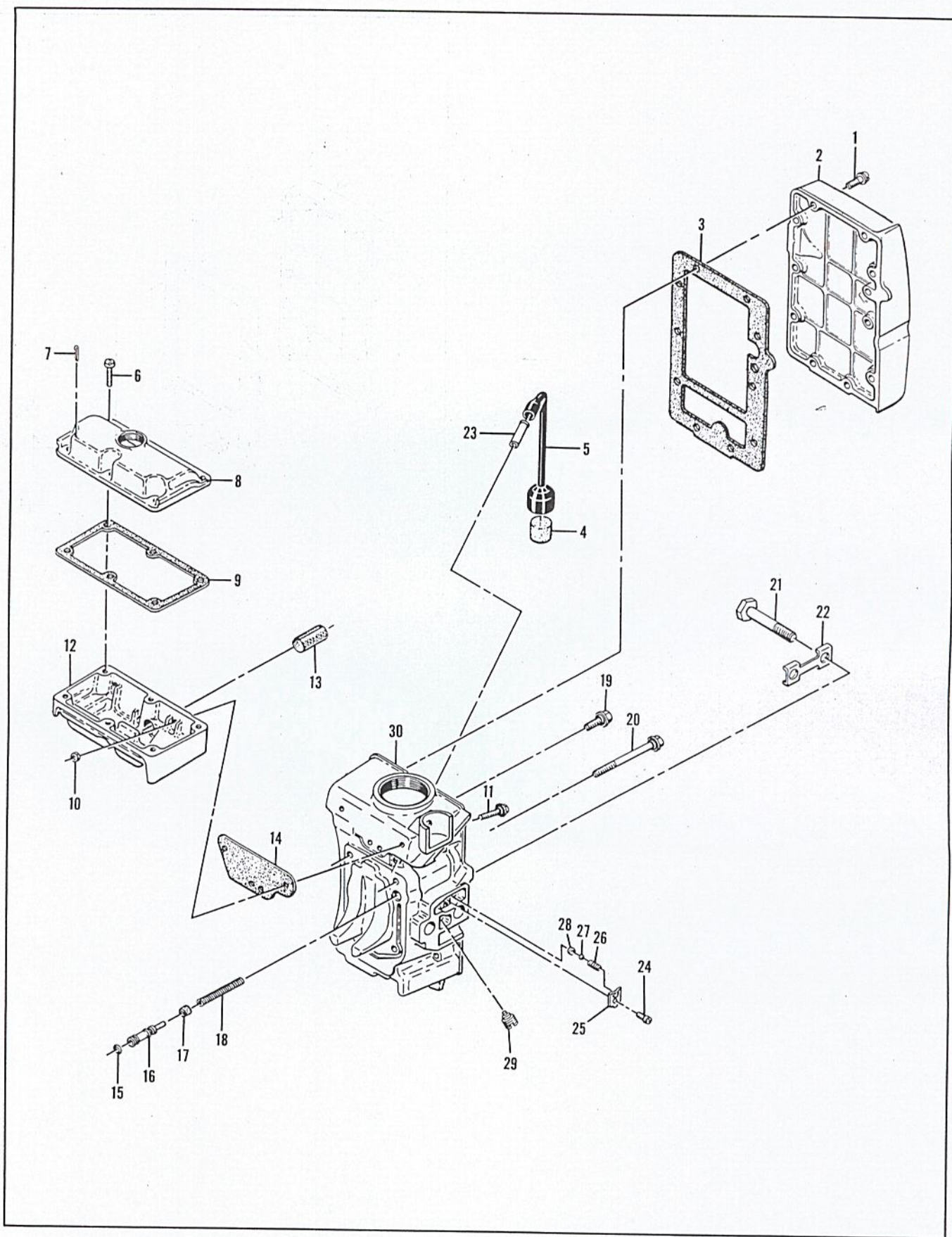


Figure 3. Oiler Tank and Fuel Tank Assemblies

FIGURE 3. OILER TANK AND FUEL TANK ASSEMBLIES

Index No.	Part Number	Nomenclature	Units Per Assy
1	104396	Screw - Pan hd 10-24 x 3/4 in. lg. ....	10
2	50514A	Cover - Fuel tank .....	1
3	50034B	Gasket - Fuel tank .....	1
4	50124A	Filter - Fuel .....	1
5	50082	Hose - Flex .....	1
6	104395	Screw - Pan hd 10-24 x 5/8 in. lg. ....	6
7	100010	Pin - Cotter .....	1
8	57114A	Cover - Oil tank .....	1
9	57152	Gasket - Oil tank cover .....	1
10	101191	Nut - Hex 10-24 .....	3
11	55494	Screw Assy - Sealing .....	3
12	57112A	Tank - Oiler .....	1
13	57279	Screen - Oiler .....	1
14	57147	Gasket - Oiler tank .....	1
15	101056	"O" Ring .....	1
16	57148A	Piston - Oiler .....	1
17	24104A	Cup - Oiler piston .....	1
18	18349A	Spring - Oiler piston .....	1
19	50340	Screw Assy - Sealing .....	3
20	50569	Screw Assy - Sealing .....	1
	53553A	Fuel Tank Assy .....	1
21	57217	. Bolt - Bar mounting .....	2
22	51439	. Lockplate .....	1
23	28042	. Tube - Fuel hose .....	1
24	110055	. Screw - Fil hd 8-32 x 3/8 in. lg. (SEMS).....	1
25	51941	. Retainer - Ball .....	1
26	51945	. Spring - Outlet .....	1
27	100549	. Ball - 3/16 in. dia .....	1
28	51943	. Seat - Ball valve .....	1
29	57595	. Plug .....	1
30		. Tank - Fuel .....	1
		(Order Fuel Tank Assy #53553A)	

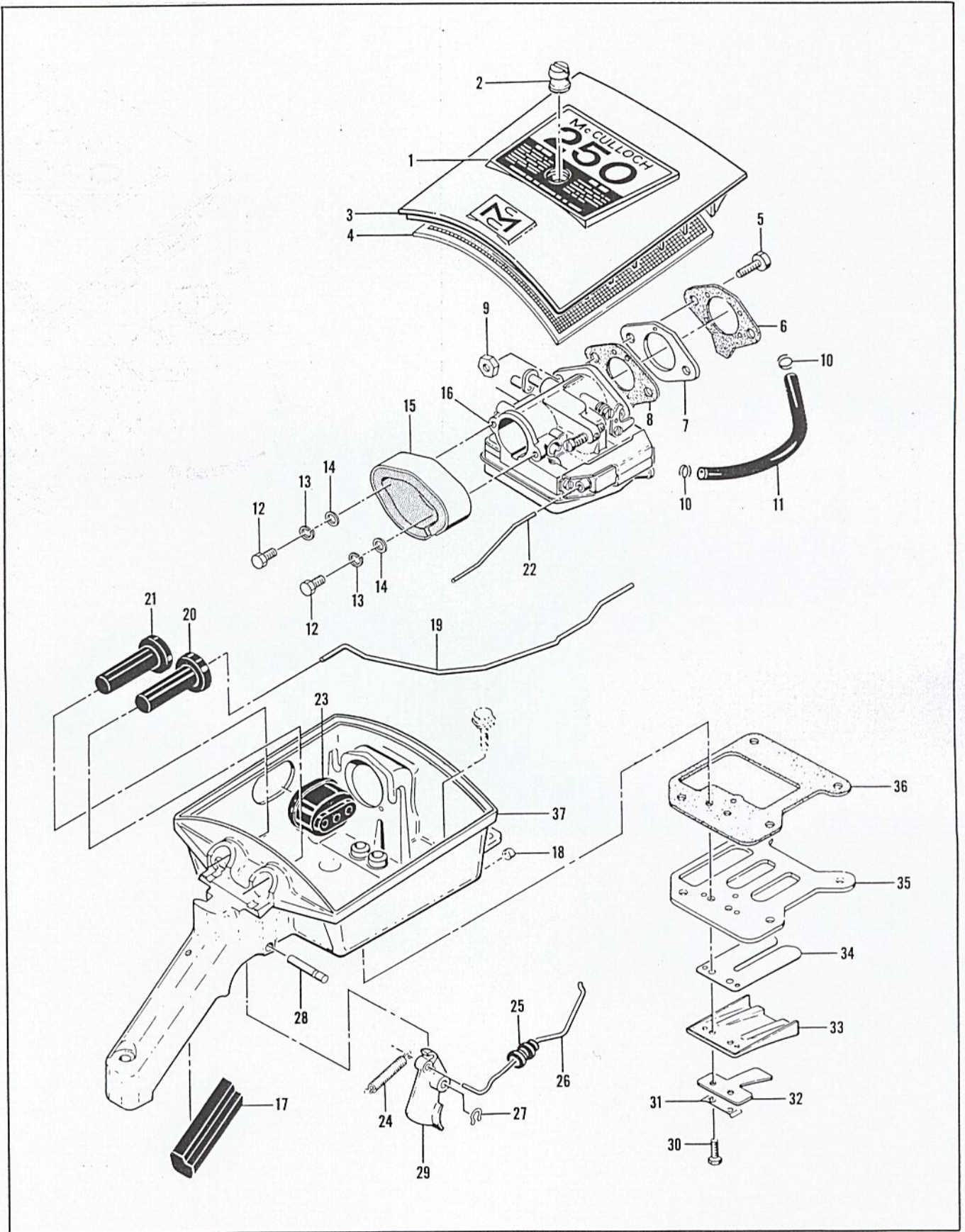


Figure 4. Cover and Airbox Assembly



FIGURE 4. COVER AND AIRBOX ASSEMBLY

Index No.	Part Number	Nomenclature	Units Per Assy
X 1	58973	Plate - Name .....	1
	50822	Cover Assy - Air cleaner .....	1
2	50674	. Nut - Air cleaner attachment .....	1
3		. Cover - Air cleaner .....	1
4	55497	Screen - Air cleaner .....	1
5	102121	Screw - Hex hd 1/4-20 x 7/8 in. lg. ....	2
6	50123B	Gasket - Carburetor .....	1
? 7	53189	Adapter - McCulloch carburetor .....	1
8	50123B	Gasket - Carburetor flange .....	1
? 9	103242	Nut - Hex 1/4-20 .....	2
10	50742	Clamp - Fuel hose .....	2
11	50097	Hose - Fuel .....	1
? 12	103705	Screw - Hex hd 10-32 x 3/8 in. lg. ....	2
? 13	103174	Lockwasher - No. 10 .....	2
14	102189	Washer - Plain #10 .....	2
X 15	58922	Collector Assy - Fuel .....	1
X 16	58856	McCulloch Carburetor Assy (See figure 5) .....	1
17	50218A	Grip - Handle .....	1
18	55449A	Seal - Chain oiler push rod .....	1
19	57062	Pushrod - Oiler .....	1
20	50591B	Button - Oiler .....	1
21	50591B	Button - Primer .....	1
? 22	53589A	Rod - Primer .....	1
	57449D	Airbox Assembly .....	1
? 23	53277	. Grommet - Carburetor control .....	1
24	36499	. Spring - Throttle .....	1
25	51561A	. Grommet - Throttle .....	1
? 26	53279A	. Rod - Throttle .....	1
27	104501	. Retainer - Pin .....	1
28	50507	. Pin - Throttle trigger .....	1
29	50091B	. Trigger - Throttle .....	1
30	103740	. Screw - Hex hd 8-32 x 5/8 in. lg. ....	2
31	51480	. Plate - Lock .....	1
32	57658	. Clamp - Reed .....	1
33	57654	. Deflector - Fuel .....	1
34	51809A	. Valve - Reed .....	1
35	57656B	. Plate - Reed .....	1
36	57145	. Gasket - Airbox .....	1
37		. Airbox .....	1
		(Order Airbox Assy #57449D)	

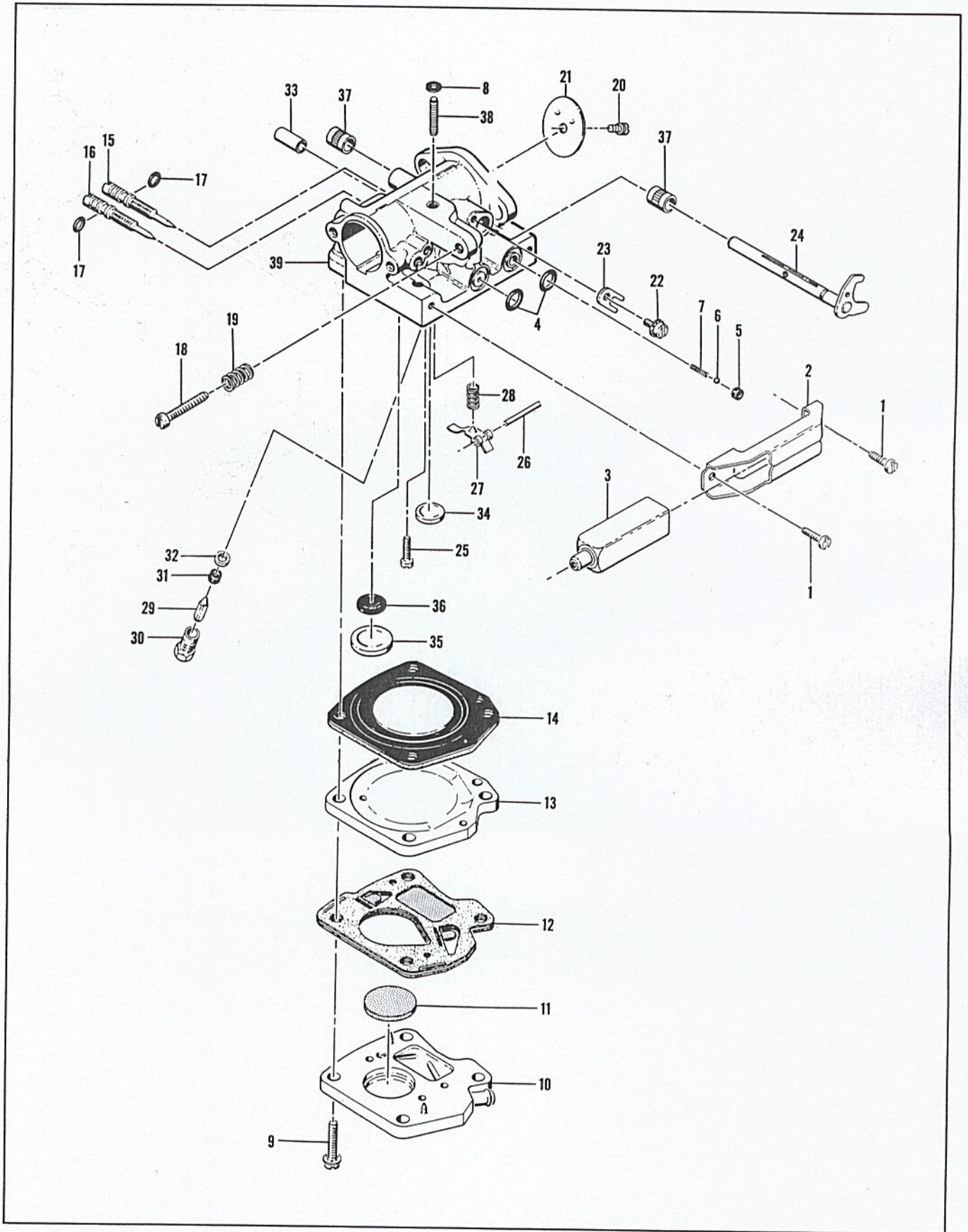


Figure 5. McCulloch Carburetor Assembly

FIGURE 5. McCULLOCH CARBURETOR ASSEMBLY

Index No.	Part Number	Nomenclature	Units Per Assy
	58856	Carburetor Assembly - McCulloch .....	1
1	110054	. Screw - Pan hd 6-32 x 3/8 in. lg. ....	2
2	53440	. Bracket - Primer mounting .....	1
3	53449	. Primer Assy .....	1
4	101056	. "O" Ring .....	2
5	59480	. Seat - Primer valve .....	1
6	100302	. Ball - Steel 1/4 inch diameter .....	1
7	28754	. Spring - Primer .....	1
8	100283	. Grommet .....	1
9	104520	. Screw - 10-24 x 7/8 in. lg. (SEMS) .....	4
10	58965	. Body Assy - Fuel pump .....	1
11	57277	. Filter - Fuel pump .....	1
12	57274A	. Diaphragm Assy - Fuel pump .....	1
13	48901	. Plate - Carburetor diaphragm .....	1
14	55067C	. Diaphragm - Carburetor .....	1
15	53948	. Needle - Idle adjustment .....	1
16	53311	. Needle - Main adjustment .....	1
17	104001	. "O" Ring .....	2
18	55397	. Screw - Fil hd 8-36 x 15/16 in. lg. ....	1
19	51705	. Spring - Idle screw .....	1
20	104814	. Screw - 4-40 x 1/4 in. lg. (SEMS) .....	1
21	53309	. Plate - Throttle .....	1
22	110055	. Screw - 8-32 x 3/8 in. lg. (SEMS) .....	1
23	55082	. Clip - Shaft .....	1
24	53588	. Shaft - Throttle .....	1
25	104164	. Screw - Pan hd 4-40 x 1/4 in. lg. ....	1
26	104305	. Pin - Lever .....	1
27	55688	. Lever - Inlet control .....	1
28	57172	. Spring - Inlet control .....	1
29	55476A	. Needle - Inlet control .....	1
30	55475	. Body - Needle .....	1
31	59480	. Seat - Needle .....	1
32	55689	. Washer - Valve seat .....	1
	58852	. Body Assembly - Carburetor .....	1
33	47523	. Tube .....	1
34	102758	. Plug - Expansion .....	1
35	104407	. Plug - Expansion 1-inch .....	1
36	55690B	. Seal - Capillary, large .....	1
37	55062A	. Bushing .....	2
38	48611	. Stud .....	1
39		. Body .....	1

5 x 39

(Order Body Assy #58852)

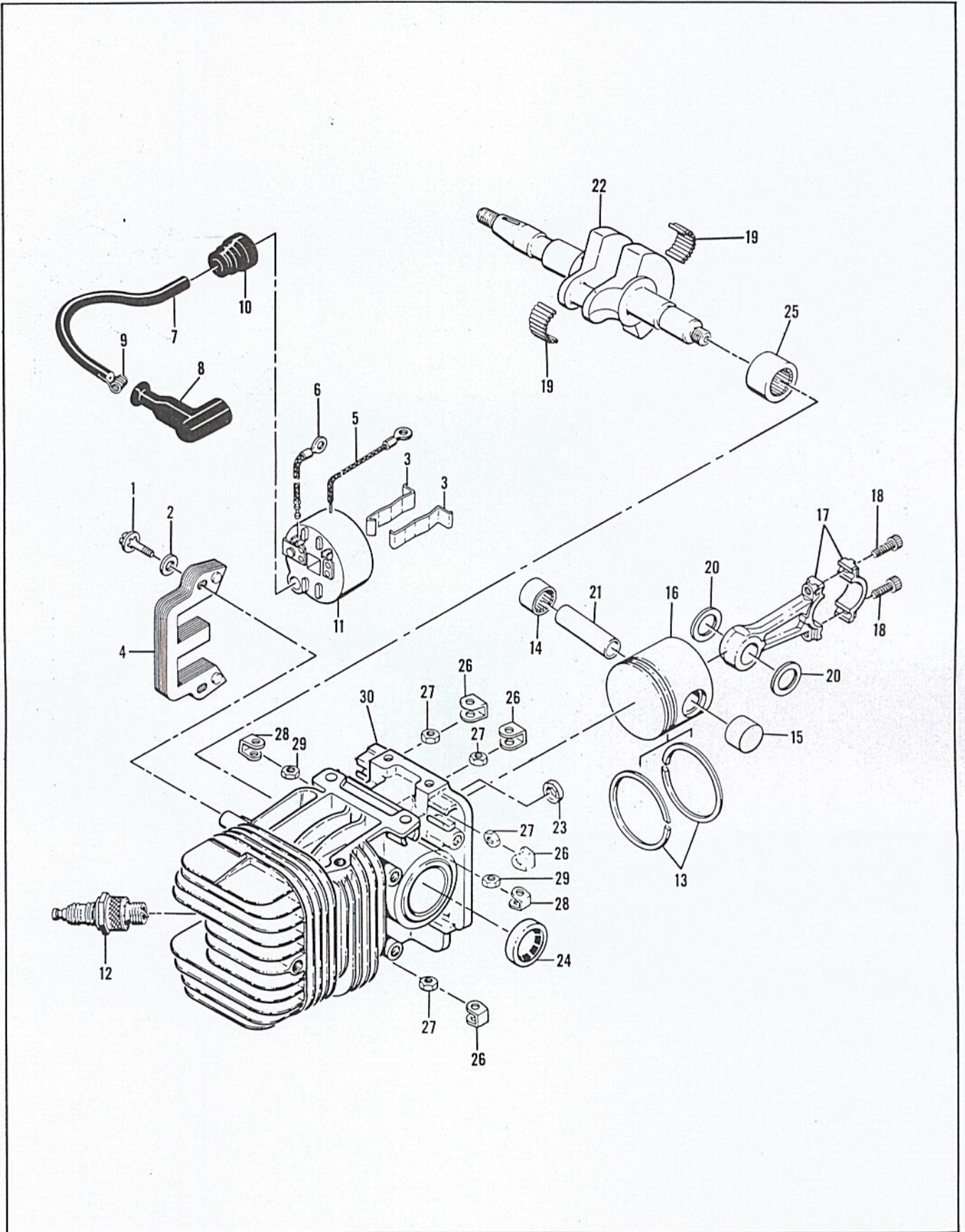


Figure 6. Powerhead Assembly

FIGURE 6. POWERHEAD ASSEMBLY

Index No.	Part Number	Nomenclature	Units Per Assy
1	104138	Screw - Hex hd 10-24 x 7/8 in. lg. (SEMS)	2
2	102189	Washer - Plain	2
3	51253	Retainer - Coil	2
4	51251	Lamination Assy	1
	55949A	Coil and Terminal Assy	1
5	101883	. Wire Assy - Ground	1
6	57225	. Wire Assy - Primary	1
7	52547	. Wire Assy - Spark plug	1
8	55060	. . Boot - Spark plug	1
9	55061	. . Connector	1
10	55617	. Nipple - Spark plug wire	1
11		. Coil Assy (Order Coil and Terminal Assy #55949A)	1
12		Plug - Spark 14MM	1
	48695	Piston Assy	1
13	48691	. Ring Set - Piston standard (2 rings)	1
14	101206	. Bearing	1
15	104378	. Bearing	1
16		. Piston (Order Piston Assy #48695)	1
17	55009A	Connecting Rod Assy	1
18	104589	. Screw - Socket hd 10-32 x 0.552 in. lg.	2
19	102742	. Roller - Needle	24
20	51209	Washer - Thrust	2
21	57198	Pin - Piston	1
22	50659	Crankshaft	1
23	55449A	Washer - Felt	1
	58971	Cylinder Assy - Crankcase	1
24	104128	. Seal - Oil	1
25	104129	. Bearing - Needle	1
26	18556A	. Retainer - Nut	6
27	101143	. Nut - Hex 1/4-20	6
28	28053	. Retainer - Nut	2
29	101326	. Nut - Hex 10-24	2
30		. Cylinder - Crankcase Assy (Order Assy #58971)	1

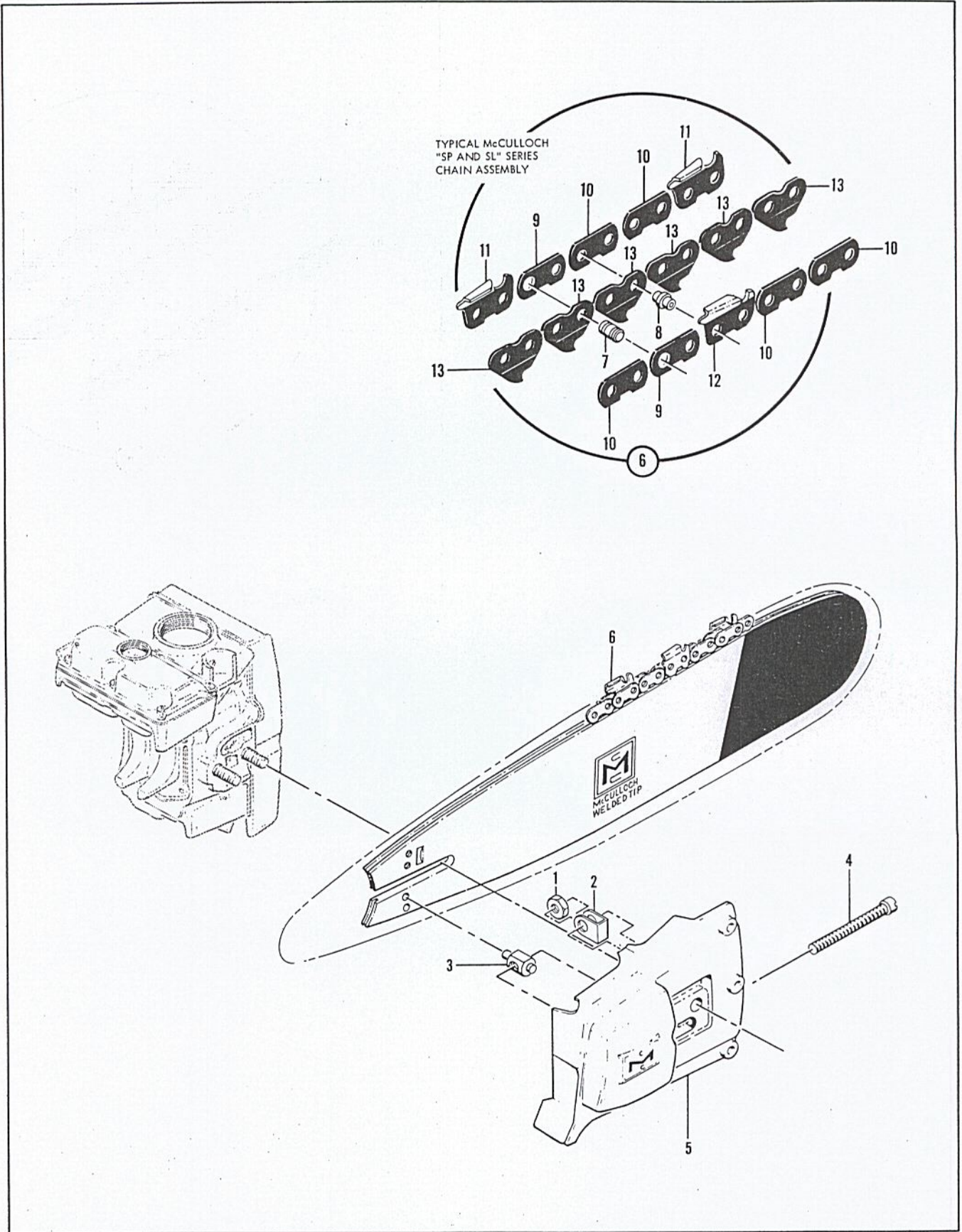


Figure 7. Bar, Chain and Clutch Guard Assembly

FIGURE 7. BAR, CHAIN AND CLUTCH GUARD ASSEMBLY

Index No.	Part Number	Nomenclature	Units Per Assy
	53542A	Clutch Guard Assembly .....	1
1	100640	. Nut - 1/4-28 lock.....	1
2	18556A	. Retainer - Nut .....	1
3	52207C	. Nut - Bar adjust.....	1
4	53853	. Screw - Fil hd 1/4-28 x 3-15/16 in. lg. ....	1
5	53854	. Guard - Clutch .....	1
6		Typical McCulloch "SP and SL" Series Chain Assy	
7		. Master Pin	
8		. Rivet	
9		. Master Side Link	
10		. Side Link	
11		. Cutter - Left side	
12		. Cutter - Right side	
13		. Center Link	

TOOLS AND ACCESSORIES

Part Number	Nomenclature
*51445A	Wrench and Screwdriver Combination
*60059	Owner's Manual of Operating Instructions
51443	Spike
36248	Wrench - Spark plug
18413A	Feeler Gauge
102449	McCulloch Yellow Paint (12 oz spray bomb type can)
56409	McCulloch Oil (1 quart)
56404	McCulloch Oil (12 oz can)
56224	Chain Breaker - Rivet spinner
56250	Depth Gauge - 0.025 - 0.040
56251	Depth Gauge - 0.045 - 0.060

\*Indicates items furnished with each saw.

OVERSIZE PISTON ASSEMBLY

Part Number	Nomenclature
48684	Piston Assy - 0.010 oversize
48692	. Ring Set - Piston 0.010 oversize (2 rings)
48685	Piston Assy - 0.020 oversize
48693	. Ring Set - Piston 0.020 oversize (2 rings)
48686	Piston Assy - 0.030 oversize
48694	. Ring Set - Piston 0.030 oversize (2 rings)