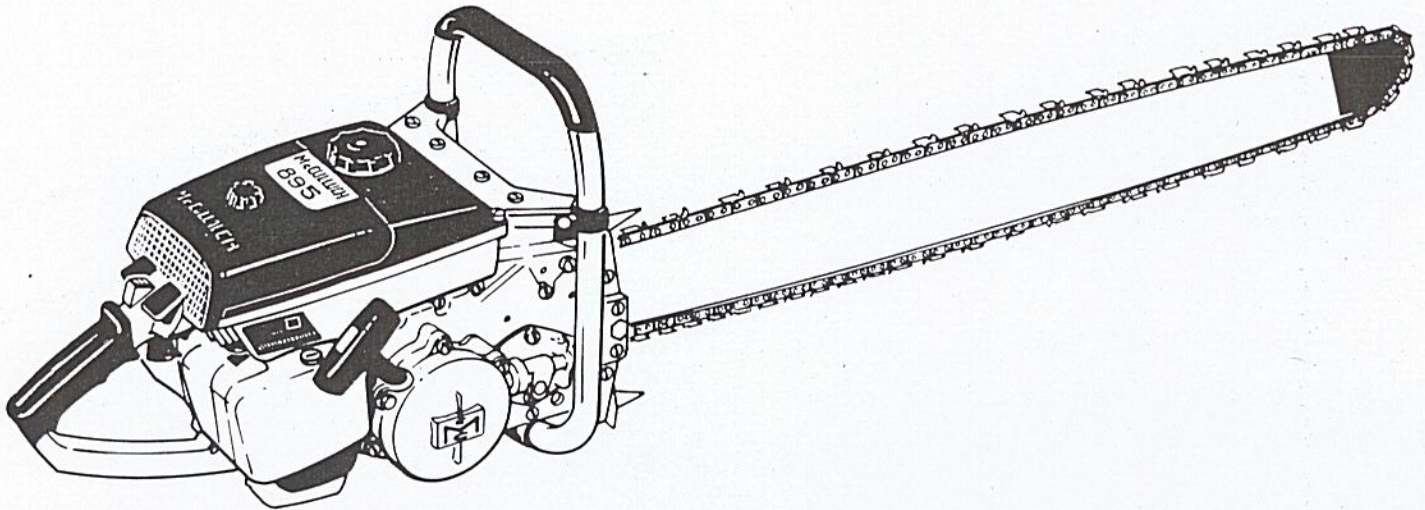


ILLUSTRATED PARTS LIST

MARCH 1966



The following pages contain an illustrated parts list for the Model 895 Chain Saw. Due to small differences between saws, it is important that the Serial Number of your saw be included whenever spare parts are ordered.

The policy of McCulloch Corporation is one of continual improvement in design, manufacturing and engineering advancement wherever possible to assure still finer two-cycle power tools. Hence, specifications, equipment, colors, design and manufacturer's suggested list prices are subject to change without notice and McCulloch Corporation reserves the right to make such changes without prior notification or obligation to backfit or supply backfit components for units previously shipped from the factory.

	Page
Figure 1. Engine Exploded View - General	2
Figure 2. Fuel System Components	4
Figure 3. McCulloch Carburetor Assembly	6
Figure 4. Starter and Clutch Assemblies	8
Figure 5. Powerhead Assembly	10
Figure 6. Transmission Assembly	12
Figure 7. Lockplate Adjusting Assembly, Bar and Chain	14
Figure 8. Plunge Bow Saw Assembly	16
Figure 9. Handle and Control Assembly	18

McCULLOCH CORPORATION

6101 West Century Boulevard, Los Angeles, California 90045

MODEL 895

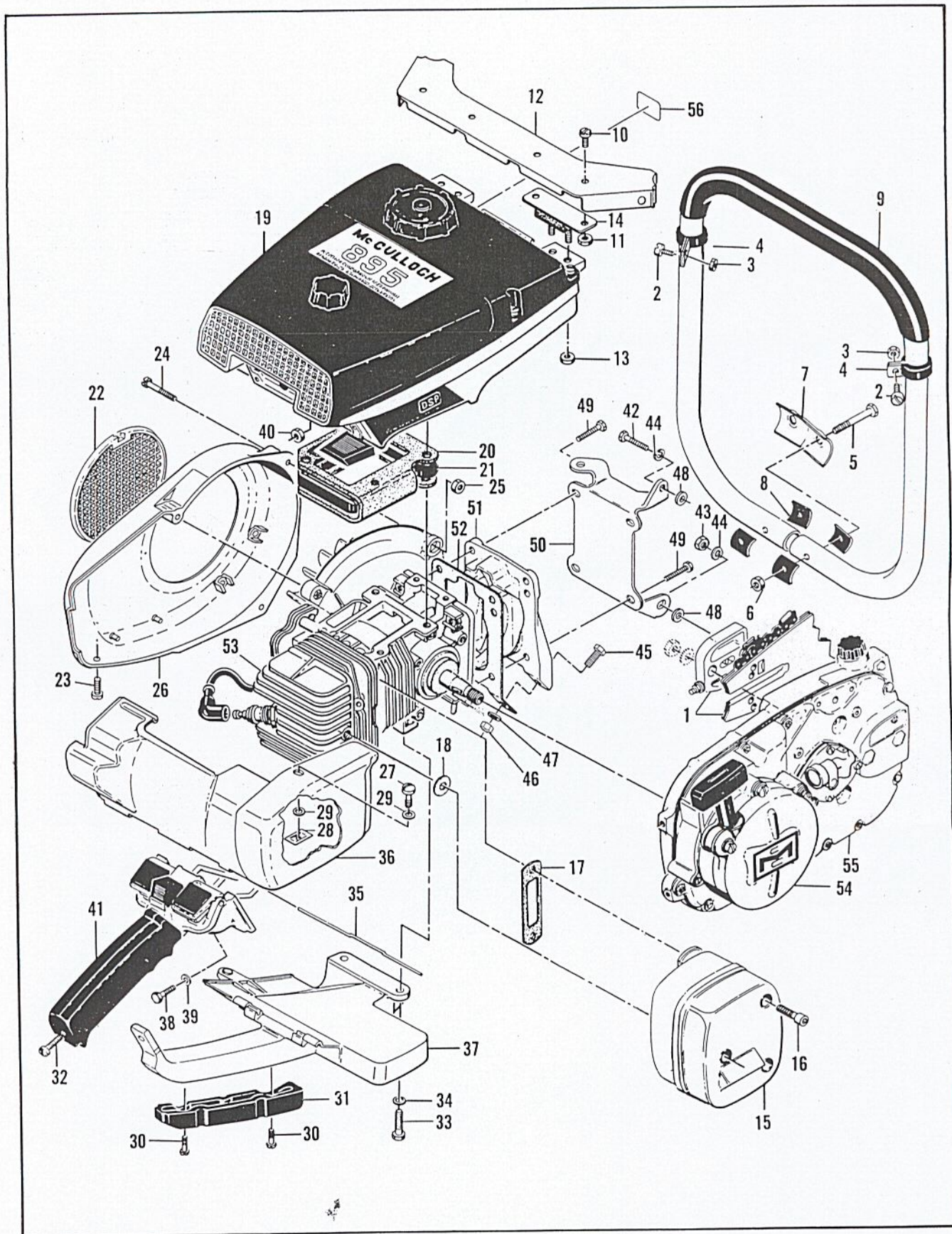


Figure 1. Engine Exploded View - General

FIGURE 1. ENGINE EXLODED VIEW — GENERAL

Index No.	Part Number	Nomenclature	Units Per Assy
1		Lockplate Adjusting Assy, Bar and Chain (See Figure 7)	1
2	102761	Screw - Hex hd 10-24 x 7/8 in. lg	2
3	100239	Nut - Hex 10-24	2
4	103923	Clamp - Frame	2
5	102125	Screw - Hex hd 1/4-20 x 1-3/4 in. lg	2
6	105394	Nut - Hex 10-24	2
7	51660	Clamp - Frame	1
8	50062	Insulator - Frame	4
9	60766A	Frame and Grip Assy	1
10	104393	Screw - Pan hd 10-24 x 3/8 in. lg	4
11	101191	Nut - Hex 10-24	4
12	55638	Brace - Frame	1
13	101191	Nut - Hex 10-24	4
14	55606B	Mount - Shock	2
15	*53480	Spark Arrester and Screw Assy	1
16	104895	. Screw - Socket hd 10-24 x 5/8 in. lg	3
17	53652	Gasket - Spark Arrester	1
18	53651	Washer - Insulating	1
19		Fuel System Components (See Figure 2)	1
20	53768A	Gasket - Fuel tank insulator	1
21	53684A	Insulator - Fuel tank	1
22	55615	Guard - Flywheel	1
23	102500	Screw - Pan hd 10-24 x 1/2 in. lg	1
24	104816	Screw - 10-24 x 1-1/4 in. lg	3
25	101326	Nut - Hex 10-24	2
26	57733	Fan Housing	1
27	51351	Screw - Special	1
28	103741	Speednut	1
29	100005	Washer - Plain 1/4 in.	2
30	104483	Screw - Binder hd 10-24 x 5/8 in. lg	2
31	55941	Insert - Handle	1
32	104397	Screw - Pan hd 10-24 x 7/8 in. lg	1
33	102121	Screw - Hex hd 1/4-20 x 7/8 in. lg	2
34	100005	Washer - Plain 1/4 in.	2
35	55885	Pin - Shroud hinge	1
36	55419A	Shroud Assy - Cylinder and spark arrester	1
37	57872	Brace - Handle	1
38	102761	Screw - Hex hd 10-24 x 7/8 in. lg	2
39	102189	Washer - Plain #10	2
40	102067	Nut - Hex 10-24	2
41		Handle and Control Assy (See Figure 9)	1
42	100882	Screw - Hex hd 1/4-20 x 3/4 in. lg	1
43	100248	Nut - Hex 1/4-28	1
44	100153	Lockwasher - 1/4 in.	2
45	100882	Screw - Hex hd 1/4-20 x 3/4 in. lg	1
46	105394	Nut - Hex 1/4-20	1
47	100005	Washer - Plain 1/4 in.	1
48	30351884	Washer - Trans. bracket	2
49	101982	Screw - Hex hd 1/4-20 x 1 in. lg	4
50	61225	Bracket - Gearcase	1
51	53473	Cover - Crankcase bottom	1
52	58166A	Gasket - Crankcase bottom cover	1
53		Powerhead Assy (See Figure 5)	1
54		Starter and Clutch Assy (See Figure 4)	1
55		Transmission Assy (See Figure 6)	1
56	59445	Decal - Oiler	1
	*63173	Spark Arrester - Half quiet (alternate)	
	*63174	Spark Arrester - Full quiet (alternate)	

FIGURE 2. FUEL SYSTEM COMPONENTS

Index No.	Part Number	Nomenclature	Units Per Assy
	60427	Cover Assy - Air cleaner	1
1	60243	. Knob - Air cleaner cover.	1
2	103741	. Speednut.	1
3		. Cover - Air cleaner (Order Assy #60427)	1
4	63686	Nameplate	1
5	63814	Instruction Plate	1
6	55498	Screen - Air cleaner	1
7	55659	Grill - Air cleaner cover.	1
8	104396	Screw - Pan hd 10-24 x 3/4 in. lg	1
9	55634	Anchor Assy - Air cleaner	1
10	53831	Hose Assy - Fuel line.	1
11	63669	. Hose - Fuel	1
12	53679B	. Pickup Assy - Fuel	1
13	61159	. Filter - Fuel.	1
14	61754	Lever Assy - Governor.	1
15	104154	. Screw - Set 8-32 x 1/4 in. lg	1
16	55958	Arm Assy - Governor.	1
17	61757	Spring - Governor	1
18		McCulloch Carburetor and Fuel Collector Assemblies (See Figure 3) .	1
19	55934B	Cap Assy - Fuel	1
20	55063	. Filter - Fuel cap	1
21	53766A	. Valve - Check	1
22	101348	"O" Ring - Fuel cap	1
23	104396	Screw - Pan hd 10-24 x 3/4 in. lg	14
24	63667	Cover - Fuel tank	1
25	55627A	Gasket - Fuel tank	1
26	53837A	Liner - Fuel tank.	1
27	102151	Screw - Hex hd 1/4-20 x 1/2 in. lg	1
28	105043	Lockwasher.	1
29	55948A	Screw - Fuel tank	4
30	58376	Lockplate	1
31	55636	Washer - Insulating	4
32	102189	Washer	2
33	103744	Washer - Sealing	2
34	103740	Screw - Hex hd 8-32 x 7/8 in. lg.	2
35	51480	Lockplate	1
36	57658A	Clamp - Reed	1
37	53686A	Deflector - Fuel	1
38	48593	Valve - Reed.	1
39	53685C	Plate - Reed	1
40	58328B	Gasket	1
41	102388	Screw - Hex hd 10-24 x 5/8 in. lg	3
42	102189	Washer	3
43	55636	Washer - Insulating	2
44	63652	Shield Assy - Fuel tank.	1
	63873	Bottom Assy - Fuel tank	1
45	104504	. Rivet	1
46	101871	. Washer - Plain	1
47	51396A	. Cover Assy - Adjustment hole	1
48	104310	. Pin - Cotter	1
49	60237	. Grommet	2
50	103708	. Bushing	1
51	110054	. Screw - Pan hd 6-32 x 3/8 in. lg (SEMS)	2
52	105249	. Screw - 8-32 x 3/8 (SEMS)	3
53		. Fuel Tank Bottom (Order Fuel Tank Bottom Assy #63873)	1
54	63619	Plate - Lever retaining.	1
55	64582	Retainer - Lever	1
56	63914	Lever Assy - Compression release.	1
57	63827	Spring - Lever	1
58	63870	Emblem - Fuel tank	1

MODEL 895

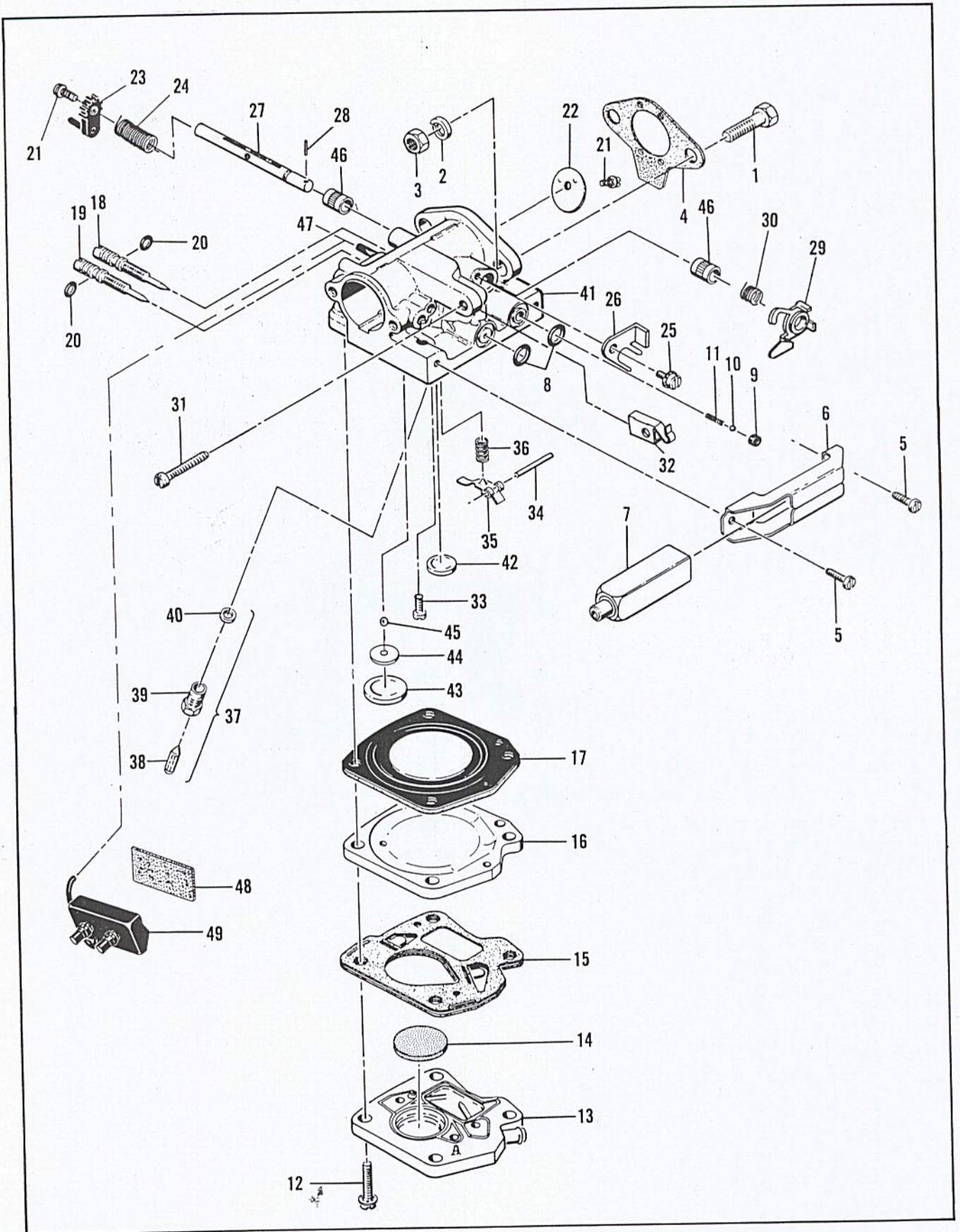


Figure 3. McCulloch Carburetor Assembly

FIGURE 3. CARBURETOR ASSEMBLY

Index No.	Part Number	Nomenclature	Units Per Assy
1	100882	Screw - Hex hd 1/4-20 x 3/4 in. lg	2
2	101476	Lockwasher - 1/4 in.	2
3	103242	Nut - Hex 1/4-20	2
4	51161E 61759	Gasket - Carburetor Carburetor Assy - McCulloch	1 1
5	110054	. Screw - Pan hd 6-32 x 3/8 in. lg	2
6	53440	. Bracket - Primer mounting	1
7	53449	. Primer Assy	1
8	101056	. "O" Ring	2
9	59480	. Seat - Primer valve	1
10	100302	. Ball - Steel 1/8 in. dia	1
11	28754	. Spring - Primer	1
12	104520	. Screw - 10-24 x 7/8 in. lg (SEMS)	4
13	57667	. Body Assy - Fuel pump	1
14	57277A	. Filter - Fuel pump	1
15	57274B	. Diaphragm Assy - Fuel pump	1
16	48901	. Plate - Carburetor diaphragm	1
17	55067C	. Diaphragm - Carburetor	1
18	53948	. Needle - Idle adjustment	1
19	53311	. Needle - Main adjustment	1
20	104001	. "O" Ring	2
21	104814	. Screw - Pan hd 4-40 x 1/4 in. lg (SEMS)	1
22	61360	. Plate - Throttle	1
23	61901	. Arm - Throttle shaft	1
24	61895	. Spring - Idle governor	1
25	110055	. Screw - 8-32 x 3/8 in. lg (SEMS)	1
26	61891	. Clip - Shaft	1
27	61920	. Shaft and Pin Assy	1
28	110301	. Pin - Groove	1
29	61894A	. Cam Assy	1
30	61906	. Spring - Cam	1
31	62910	. Screw - Idle adjusting	1
32	61108	. Guide - Throttle rod	1
33	104164	. Screw - Pan hd 4-40 x 1/4 in. lg	1
34	104305	. Pin - Lever	1
35	55688	. Lever - Inlet control	1
36	57172	. Spring - Inlet control	1
37	60163A	. Valve Set - Needle and body	1
38	63038	. Needle - Inlet control	1
39	58969	. Body - Inlet control	1
40	55689	. Washer - Inlet control	1
41	61364	. Body Assy - Carburetor	1
42	102758	. Plug - Expansion 1/2 in.	1
43	104407 61155	. Plug - Expansion 1 in. Set - Ball & Seat	1 1
44	61152	. Seat - Ball valve	1
45	61151	. Ball - Valve	1
46	55062A	. Bushing - Body	2
47	47523	. Tube - Collector inlet	1
48	58865	Absorber - Fuel	1
49	63651	Collector - Fuel	1

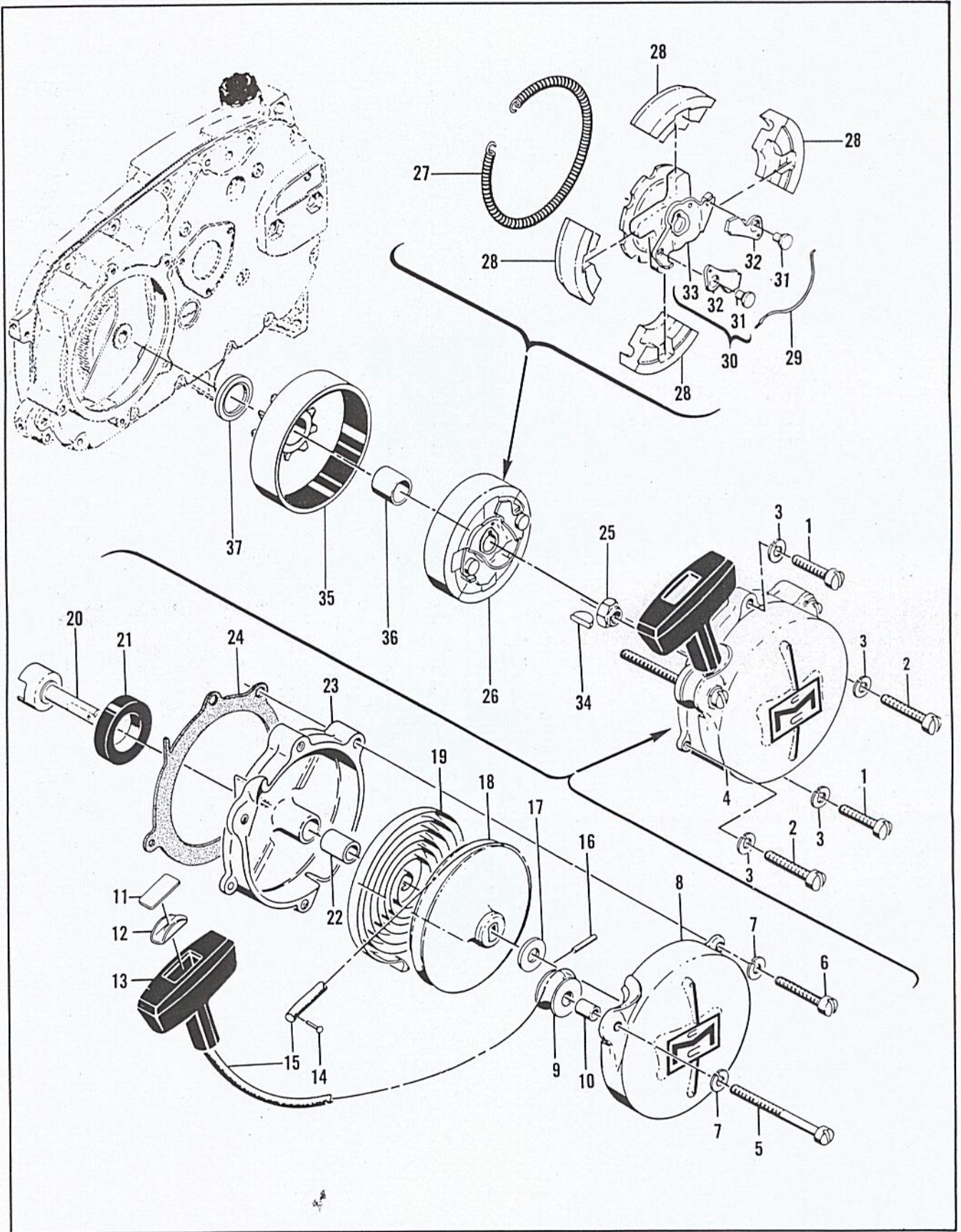


Figure 4. Starter and Clutch Assemblies

FIGURE 4. STARTER AND CLUTCH ASSEMBLIES

Index No.	Part Number	Nomenclature	Units Per Assy
1	102212	Screw - Fil hd 10-24 x 1-3/4 in. lg	2
2	102135	Screw - Fil hd 10-24 x 2 in. lg	2
3	101194	Lockwasher #10	4
4	55129C	Starter Assy	1
5	103840	. Screw - Fil hd 10-24 x 3-1/2 in. lg	1
6	102135	. Screw - Fil hd 10-24 x 2 in. lg	1
7	101194	. Lockwasher #10	2
8	55024B	. Cover - Starter	1
9	51138	. Pulley - Starter rope	1
10	103536	. Bearing - Starter pulley	1
11	57232	. Plate - Starter handle	1
12	57231	. Cup - Starter handle	1
13	57230	. Handle - Starter	1
14	101136	. Rivet	1
15	28716	. Rope - Starter	1
16	103047	. Pin - Roll	1
17	104457	. Washer - Plain 3/8 in.	1
18	55871	. Drum - Starter	1
19	51665	. Spring - Rewind	1
20	55110	. Shaft - Starter	1
21	104439	. Seal - Oil	1
	51649B	. Base Assy - Starter	1
22	55591	. . Bearing - Starter base	1
23		. . Base - Starter (Order Starter Base Assy #51649B)	1
24	55983	Gasket - Starter base	1
25	103746	Nut - Flex Loc 3/8-24	1
26	61227	Clutch Assy	1
27	58850	. Spring - Shoe retaining	1
28	61228	. Shoe - Clutch	4
29	28766A	. Spring - Starter pawl	1
30	61322	. Rotor and Pawl Assy - Clutch	1
31	28917	. . Pin - Starter pawl	1
32	28765	. . Pawl - Starter	1
33		. . Rotor Assy (Order Rotor and Pawl Assy #61322)	1
34	103879	Key - Woodruff	1
35	61321	Drum and Liner Assy - Clutch	1
36	51700	. Bushing - Clutch drum	1
37	53713	Spacer - Clutch drum	1

FIGURE 5. POWERHEAD ASSEMBLY

Index No.	Part Number	Nomenclature	Units Per Assy
1	101965	Screw - Fil hd 10-24 x 7/8 in. lg	2
2	100003	Washer	2
3	63634	Retainer - Coil	1
4	51251	Lamination Assy - Coil	1
5	63639	Wire Assy - Ground	1
	63637	Coil and Terminal Assy	1
6	63640	. Wire Assy - Spark plug	1
7	62926	. . Boot - Spark plug	1
8	62932	. . Connector - Spark plug wire	1
9		. Coil Assy (Order Coil and Terminal Assy #63637)	1

This list is continued on page 11

MODEL 895

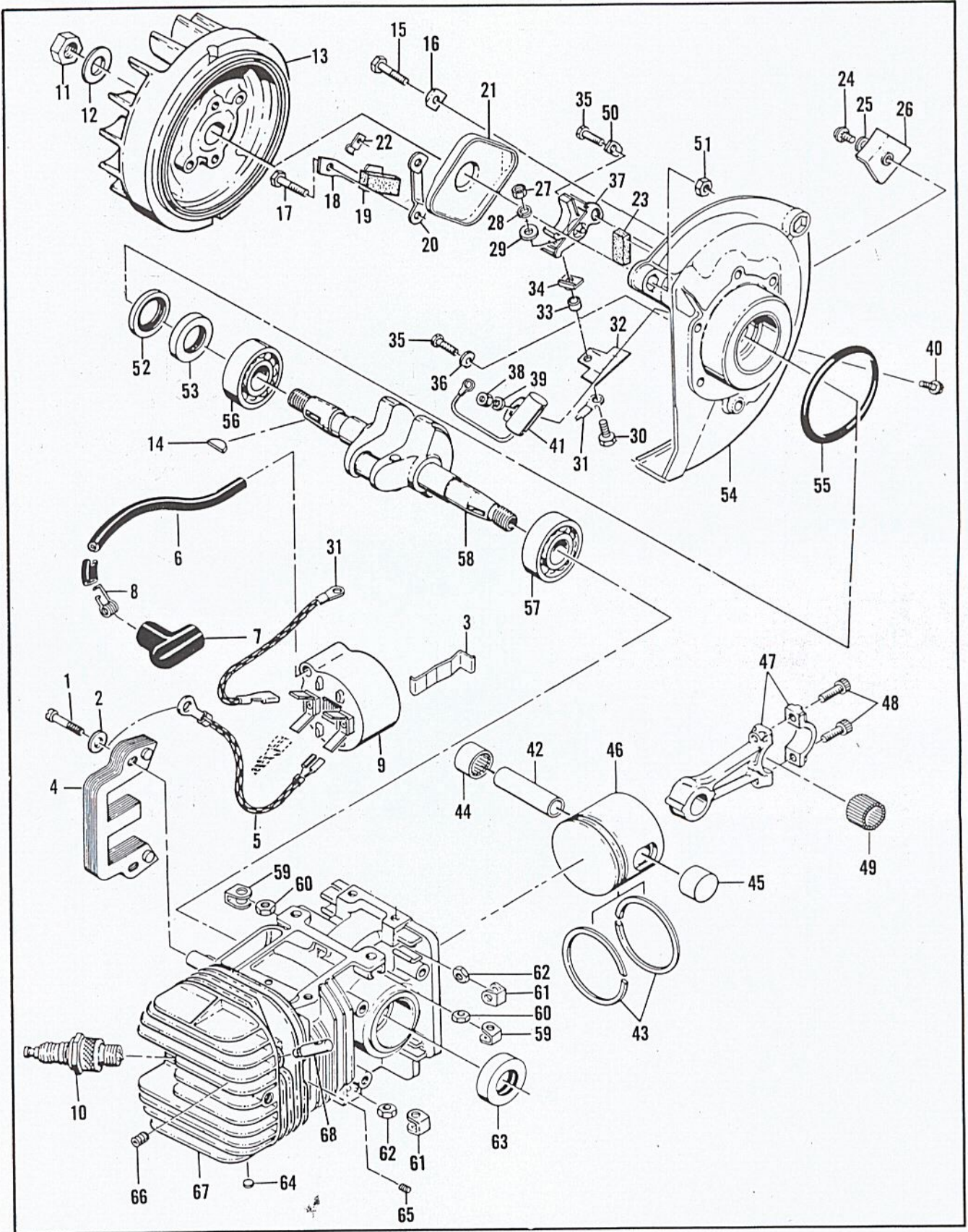


Figure 6. Powerhead Assembly

FIGURE 5. POWERHEAD ASSEMBLY (CONTINUED)

Index No.	Part Number	Nomenclature	Units Per Assy
10	63097	Plug - Spark 14 mm	1
11	101179	Nut - Hex 7/16.	1
12	101270	Washer - Special	1
13	57825B	Flywheel Assy	1
14	103879	Key - Woodruff	1
15	102763	Screw - Hex hd 10-24 x 3/4 in. lg	2
16	36388	Lockplate	1
17	102763	Screw - Hex hd 10-24 x 3/4 in. lg	4
18	57815	Strap - Seal.	1
19	50664	Seal - Breaker box drain	1
20	55977	Clip - Breaker box cover	2
21	55766B	Cover - Breaker box	1
22	104230	Speednut.	1
23	54184	Wiper - Felt	1
24	110055	Screw - 8-32 x 3/8 in. lg (SEMS)	1
25	100080	Washer - Plain #8	1
26	57829	Clamp - Ignition wire	1
27	104551	Nut - Hex 8-32	1
28	104553	Lockwasher.	1
29	100080	Washer - Plain #8	1
30	110338	Screw - Hex hd 8-32 x 1/2 in. lg	1
31	63628	Wire Assy - Primary	1
32	55782A	Insulator - Primary wire assy	1
33	57769	Insulator - Ignition screw	1
34	57770A	Insulator - Breaker spring	1
35	104733	Screw - 8-32 x 1/2 in. lg (SEMS)	2
36	57767A	Lockplate	1
37	57765A	Breaker Assy	1
38	100955	Nut - Hex 8-32	1
39	100057	Lockwasher #8	1
40	104733	Screw - 8-32 x 1/2 in. lg (SEMS)	1
41	61650	Condenser	1
42	62866	Pin - Piston	1
	62877	Piston Assy - 2.217 in. dia (Also see Oversize Assys - Page 19)	1
43	58353	. Ring Set - Piston 2.217 in. dia	1
44	62867	. Bearing - Needle	1
45	62868	. Bearing - Needle (closed end)	1
46		. Piston (Order Piston Assy #62877)	1
47	47903	Connecting Rod Assy	1
48	60201A	. Screw - Socket hd 10-32 x 5/8 in. lg	2
49	102742	. Roller - Needle	24
	57827A	Crankcase Cover Assy	1
50	55778E	. Washer - Breaker retainer	1
51	101326	. Nut - Hex 10-24.	2
52	57897	. Seal - Oil	1
53	57898	. Seal - Oil	1
54		. Cover - Crankcase. (Order Crankcase Cover Assy #57827A)	1
55	104523	"O" Ring	1
56	100824	Bearing - Ball	1
57	104490	Bearing - Ball	1
58	58128	Crankshaft	1
	63629	Cylinder Assy - Crankcase	1
59	28053	. Retainer - Nut	2
60	101326	. Nut - Hex 10-24	2
61	18556A	. Retainer - Nut	6
62	105394	. Nut - Hex 1/4-20	6
63	57732	. Seal - Oil	1
64	110340	. Plug - Expansion	3
65	110034	. Insert - Taplok	3
66	103614	. Screw - Skt hd 1/4-20 x 3/8 in. lg	1
67		. Cylinder - Crankcase . . (Order Cylinder-Crankcase Assy #63629)	1
68	63615	Valve - Compression release	1

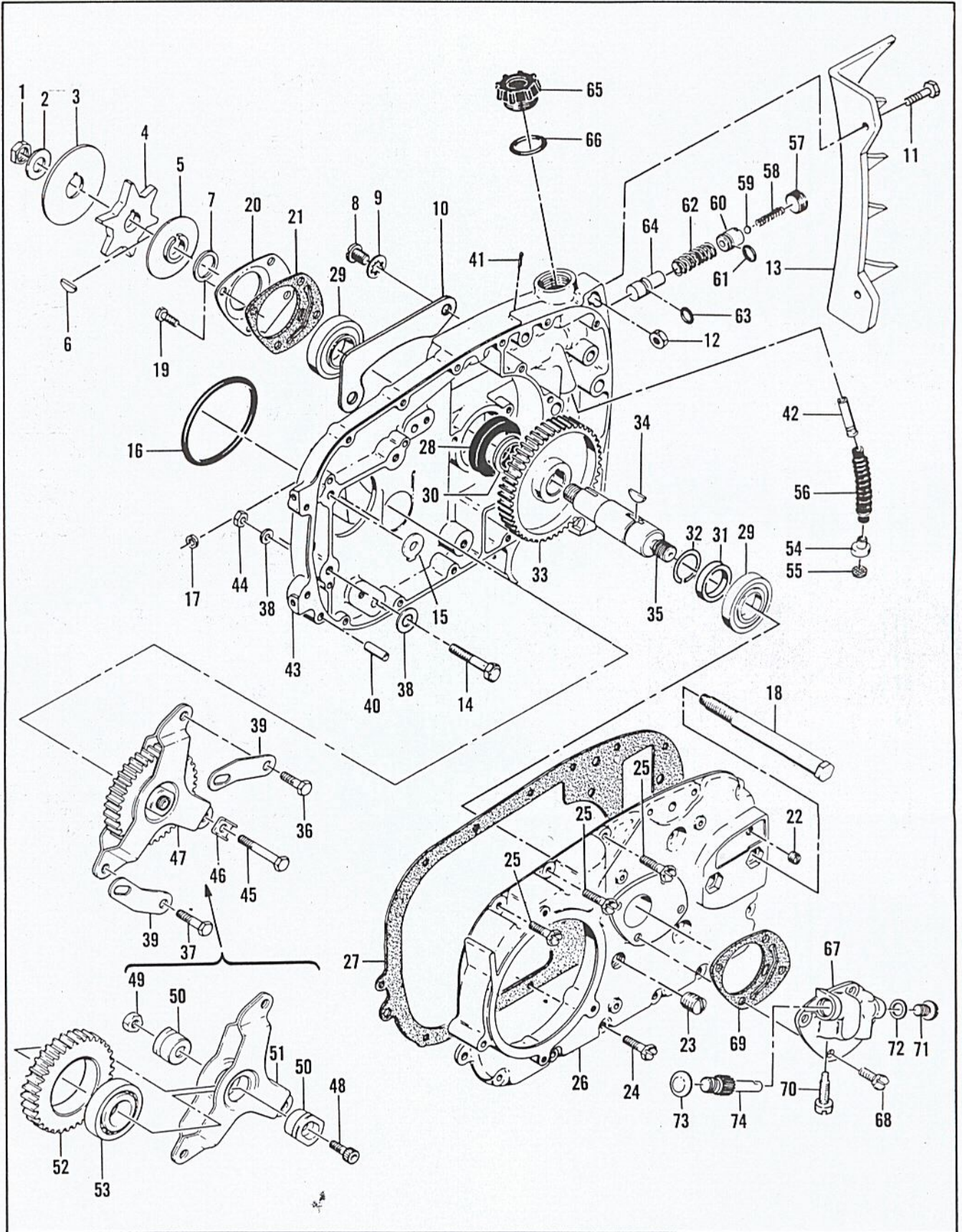


Figure 6. Transmission Assembly

FIGURE 6. TRANSMISSION ASSEMBLY

Index No.	Part Number	Nomenclature	Units Per Assy
1	60972	Nut - Special	1
2	100593	Washer - 7/16 in.	1
3	51627	Plate - Chain guide	1
4	36791A	Sprocket - 7 tooth, 9/16 in. pitch	1
	36790A	Sprocket - 6 tooth, 9/16 in. pitch	alternate
	36644A	Sprocket - 7 tooth, 1/2 in. pitch	alternate
	36020B	Sprocket - 6 tooth, 1/2 in. pitch	alternate
	52069A	Sprocket - 7 tooth, 0.404 in. pitch	alternate
5	36019A	Shroud - Sprocket	1
6	100256	Key - Woodruff #6	1
7	55737	Spacer - Sprocket	1
8	102415	Screw - Pan hd 10-24 x 3/8 in. lg	2
9	101194	Lockwasher	2
10	61224	Cover - Pushrod	1
	61783	Kit - Spike	1
11	100882	. Screw - Hex hd 1/4-20 x 3/4 in. lg	2
12	105394	. Nut - Hex 1/4-20	2
13		Spike (Order Spike Kit #61783)	1
14	103258	Screw - Hex hd 1/4-20 x 1-1/8 in. lg	3
15	36306	Lockplate	1
16	104535	"O" Ring	1
17	55449A	Washer - Oiler rod felt	1
	60633	Transmission Assy 2:1	1
18	51631A	. Bolt - Bar mounting	2
19	104835	. Screw - Pan hd 10-24 x 1/2 in. lg	4
20	60408	. Retainer - Bearing	1
21	60409	. Gasket - Retainer	1
22	104869	. Plug - Pipe 1/16-27	1
23	104218	. Plug - Pipe 3/8-18	1
24	103464	. Screw - Hex hd 10-24 x 3/4 in. lg (SEMS)	11
25	103947	. Screw - Hex hd 10-24 x 1 in. lg (SEMS)	3
26	58779	. Cover - Gear case	1
27	55913D	. Gasket - Gearcase cover	1
28	104298	. Seal - Oil	1
29	101039	. Bearing	2
30	55715	. Spacer - Gear	1
31	60407	. Spacer - Gear	1
	60420	. Shaft and Sprocket Gear Assy	1
32	104451	. Ring - Retaining	1
33	57999	. Gear - Sprocket drive	1
34	55953	. Key - Sprocket gear	1
35	60470	. Shaft - Sprocket	1
	60461	. Gearcase Assy (Order Gearcase Assy #60461)	1
36	103280	. Screw - Hex hd 1/4-28 x 5/8 in. lg	1
37	102901	. Screw - Hex hd 1/4-28 x 1 in. lg	1
38	30351884	. Washer - Plain 1/4 in.	2
39	60186	. Strap - Idler yoke	2
40	100993	. Pin - Dowel	1
41	100010	. Pin - Cotter	1
42	60389	. Valve Assy - Check	1
43		. Gearcase (Order Gearcase Assy #60461)	1
44	100640	. Nut - Hex 1/4-28	2
45	104351	. Screw - Hex hd 1/4-28 x 1-13/32 in. lg	1
46	55539	. Lockplate - Yoke	1
47	55722	. Gear and Yoke Assy	1
48	100201	. Screw - Socket hd 1/4-28 x 1/2 in. lg	1
49	100640	. Locknut - Hex 1/4-28	1
50	57493	. Hub - Bearing	2
51	53820	. Yoke Assy	1
52	55728	. Gear - Idler	1
53	100824	. Bearing - Ball	1

FIGURE 6. TRANSMISSION ASSEMBLY (CONTINUED)

Index No.	Part Number	Nomenclature	Units Per Assy
54	51505	. Weight Assy	1
55	51506	. . Screen - Pickup	1
56	28007	. Hose - Pickup	1
57	51755	. Plug - Oiler valve	1
58	51944	. Spring	1
59	100549	. Ball - Steel 0.188 in. dia	1
	60622A	. Body Assy - Oiler	1
60	57721B	. . Body - Oiler	1
61	101056	. . "O" Ring	1
62	19236	. Spring - Oiler	1
	51472	. Piston Assy - Oiler	1
63	101056	. . "O" Ring	1
64	36126	. . Piston - Oiler	1
65	57129A	. Cap - Filler	1
66	101148	. "O" Ring.	1
67	60466C	Pump and Gasket Assy - Oiler (2:1)	1
68	110172	. Screw - Special	4
69	60409	. Gasket - Oiler pump	1
70	61398	. Screw - Special	1
71	60959	. Plug - Special	1
72	60964	. Shim - 0.015 in	AR
73	104791	. Plug - Expansion 5/8 in.	1
74	61810	. Plunger - Oiler pump (2:1)	1
	60464	Transmission Assy - 3:1 Conversion Complete	1
	60463	Transmission Assy - 3.6:1 Conversion Complete	1
	60348B	Kit - Clutch and Drum Assy (3.6:1 Transmission)	1
	60349B	Kit - Clutch and Drum Assy (2:1 and 3:1 Transmission)	1
	60462	Gear Set - Idler and sprocket (2:1 Transmission)	1
	62115	Gear Set - 3:1 Transmission Conversion	1
	62114	Gear Set - 3.6:1 Transmission Conversion	1
	60914C	Pump and Gasket Assy - Oiler (3:1 Transmission)	1
	60915C	Pump and Gasket Assy - Oiler (3.6:1 Transmission)	1

FIGURE 7. LOCKPLATE ADJUSTING ASSEMBLY, BAR AND CHAIN

Index No.	Part Number	Nomenclature	Units Per Assy
1	103729	Nut - Hex 3/8-24	2
2	100393	Washer - 3/8 in.	2
3	52211D	Lockplate Adjusting Assy.	1
4	100640	. Nut - Hex 1/4-28	1
5	102813	. Washer - Spring.	1
6	102843	. Washer - Plain 1/4 in.	2
7	103919	. Screw - Fil hd 1/4-28 x 2-1/2 in. lg	1
8	52207C	. Nut - Adjusting	1
9	52206B	. Lockplate	1
	61994	Set - Bar Plate	1
10	61995	. Plate - Bar - L.H.	1
11	61996	. Plate - Bar - R.H.	1
12		Typical McCulloch Bar	1
13		Typical McCulloch Chain Assy	1
14		. Rivet	
15		. Side Link	
16		. Cutter - L.H.	
17		. Cutter - R.H.	
18		. Center Link	

MODEL 895

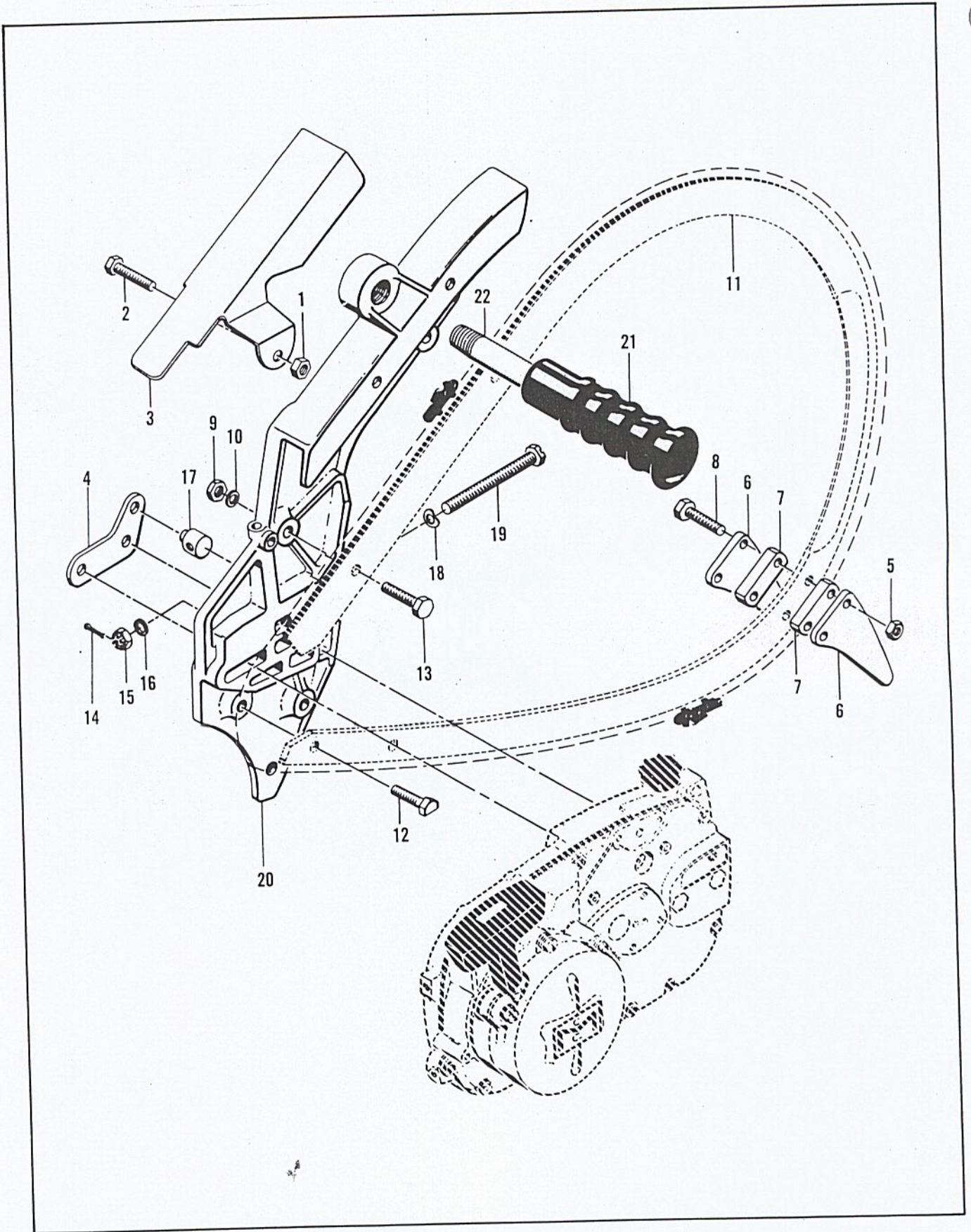


Figure 8. Plunge Bow Saw Assembly

FIGURE 8. PLUNGE BOW SAW ASSEMBLY

Index No.	Part Number	Nomenclature	Units Per Assy
	55152	Plunge Bow Saw Assy (less track)	1
1	*101143	. Nut - Hex 1/4-20	1
2	*102128	. Screw - Hex hd 1/4-20 x 1-1/4 in. lg	1
3	*57494A	. Guard - Chain (bow saw)	1
4	*51674	. Plate - Adjusting	1
5	*101143	. Nut - Hex 1/4-20	2
6	*28256	. Spike	2
7	*28259A	. Spacer	2
8	*102130	. Bolt - Hex hd 1/4-20 x 1-1/2 in. lg	2
9	*101143	. Nut - Hex 1/4-20	4
10	*100004	. Washer - Plain 1/4 in.	4
11		. Track (available through dealers)	1
12	*51955	. Bolt - Special 1/4-20 x 1 in. lg	1
13	*101982	. Bolt - Hex hd 1/4-20 x 1 in. lg	3
14	101495	. Pin - Cotter 0.09 in. dia x 1/2 in. lg	1
15	102022	. Nut - Castle 5/16 - 24	1
16	100007	. Washer - Plain 5/16 in.	1
17	19708	. Nut - Adjusting	1
18	24260	. Spring - Thrust	1
19	102193	. Screw - Adjusting	1
20	51672	. Body Assy	1
	19502	Auxiliary Handle Assy	1
21	18207A	. Grip - Handle	1
22	19476	. Auxiliary Handle	1

*Contained in loose parts package.

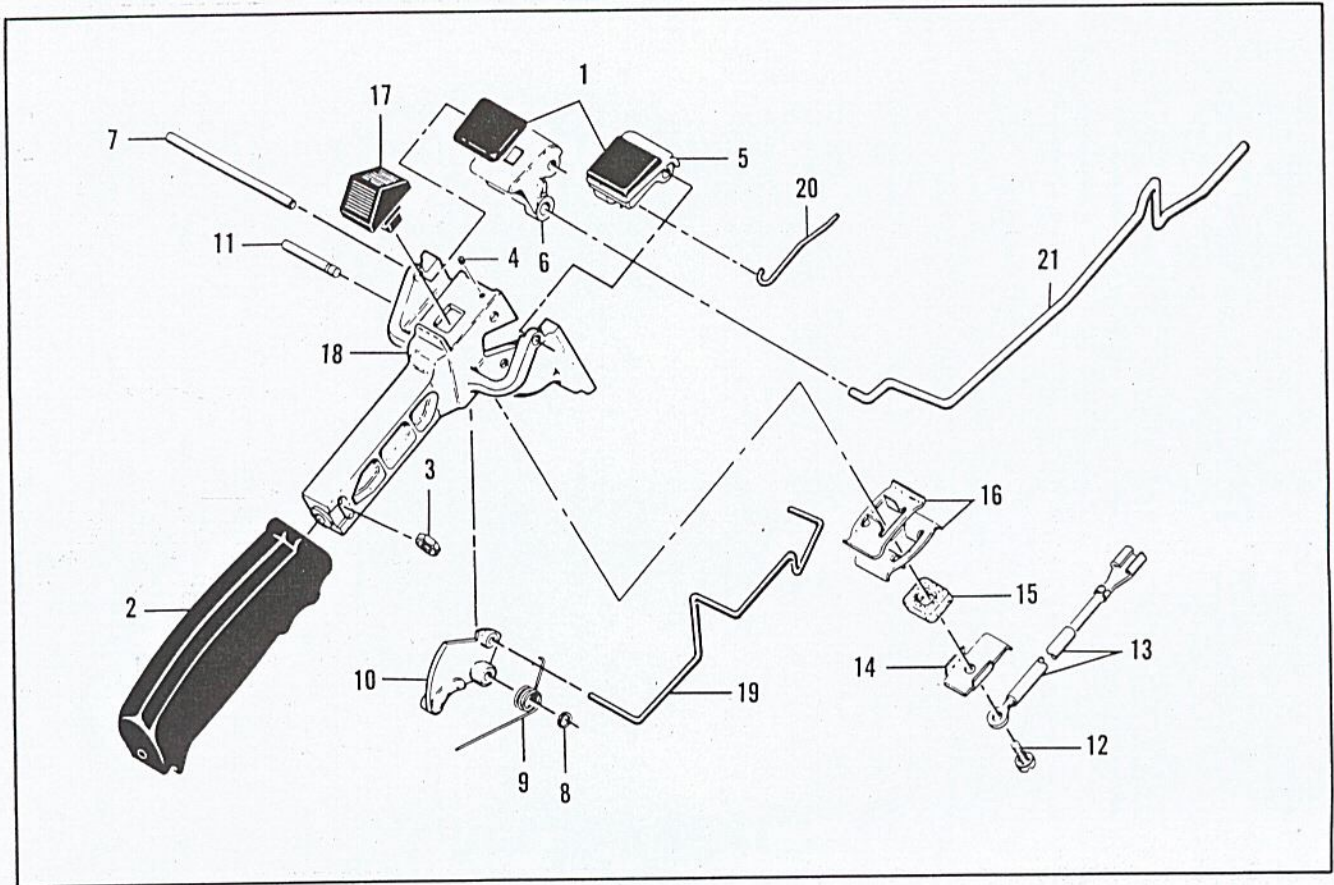


Figure 9. Handle and Control Assembly

FIGURE 9. HANDLE AND CONTROL ASSEMBLY

Index No.	Part Number	Nomenclature	Units Per Assy
1	55670	Grommet	2
	63661	Handle and Control Assy	1
2	55624A	. Grip - Handle	1
3	101326	. Nut - Hex 10-24	1
4	104484	. Screw - Set 8-32 x 1/4 in. lg	1
5	55968A	. Button - Primer control	1
6	55969A	. Button - Oiler control	1
7	51344A	. Shaft - Primer and oiler buttons	1
8	104501	. Retainer - Trigger pin	1
9	55674	. Spring - Trigger return	1
10	63663	. Trigger	1
11	50507	. Pin - Trigger	1
12	103672	. Screw - Fil hd 8-32 x 1/2 in. lg (SEMS)	1
13	63662	. Wire Assy - Stop switch	1
14	51279	. Contact - Switch	1
15	51555	. Insulator - Switch	1
16	51554A	. Detent - Switch	2
17	57718	. Button - Switch	1
18	55986	. Handle	1
19	61907	Pushrod - Throttle	1
20	53583A	Pushrod - Primer	1
21	57719	Pushrod - Oiler	1

TOOLS AND ACCESSORIES

Part Number	Nomenclature
*51445A	Wrench and Screwdriver Combination
*63688	Owner's Manual of Operating Instructions
56625B	Chain Maintenance Manual
*14168A	Wrench - Spark plug
*101522	Wrench - Spark Arrester

*Items furnished with each saw.

OVERSIZE AND OPTIONAL PISTON ASSEMBLIES

Part Number	Nomenclature
62878	Piston Assy - 2.228 in. dia.
58394	. Ring Set - 2.227 in. dia.
62879	Piston Assy - 2.238 in. dia.
58354	. Ring Set - 2.237 in. dia.
62880	Piston Assy - 2.248 in. dia.
58395	. Ring Set - 2.247 in. dia.
62883	Piston Assy - 2.218 in. dia. (wide rings)
62422	. Ring Set - 2.218 in. dia. (wide)
62884	Piston Assy - 2.248 in. dia. (wide rings)
62423	. Ring Set - 2.248 in. dia. (wide)