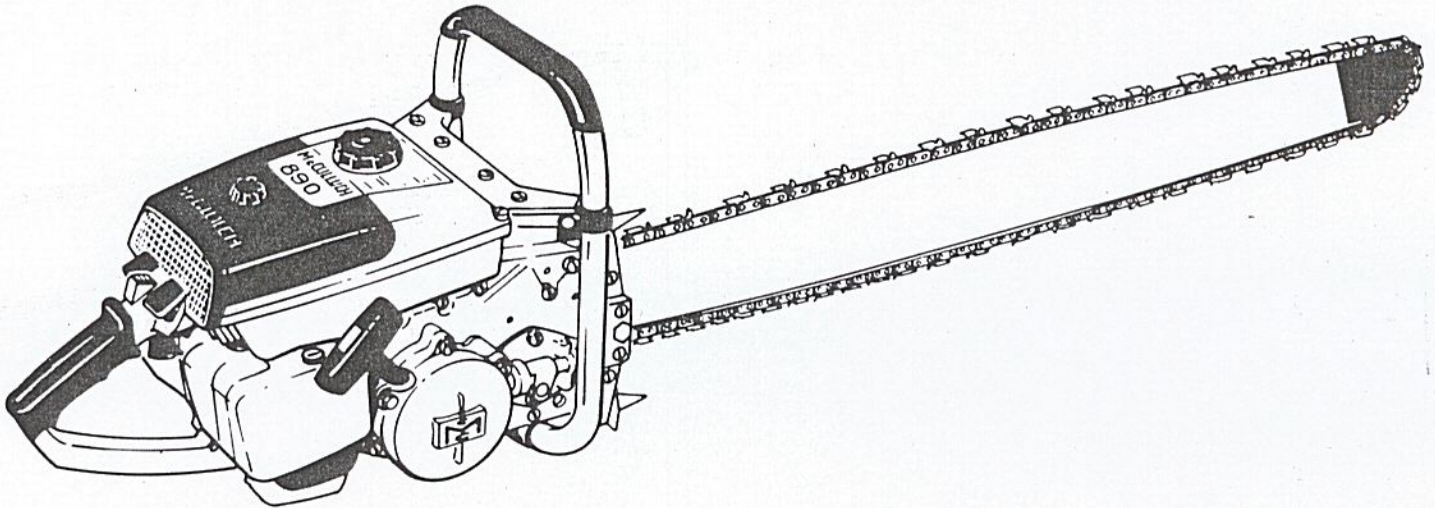


# ILLUSTRATED PARTS LIST

AUGUST 1964



The following pages contain an illustrated parts list for the Model 890 Chain Saw, Serial No. 1191 and up. It is important that the Serial Number of your saw be included whenever spare parts are ordered. The parts should also be compared visually with those illustrated in the parts list.

The McCulloch Corporation reserves the right to modify or change specifications without (1) prior notification or (2) obligation including the obligation to back-fit or supply back-fit components for units previously shipped from the factory.

	Page
Figure 1. Engine Exploded View - General . . . . .	2
Figure 2. Fuel System Components . . . . .	4
Figure 3. McCulloch Carburetor Assembly . . . . .	6
Figure 4. Starter and Clutch Assemblies . . . . .	8
Figure 5. Powerhead Assembly . . . . .	10
Figure 6. Transmission Assembly . . . . .	12
Figure 7. Lockplate Adjusting Assembly, Bar and Chain . . . . .	14
Figure 8. Plunge Bow Saw Assembly . . . . .	16
Figure 9. Handle and Control Assembly . . . . .	18



**McCULLOCH CORPORATION**  
 8101 West Century Boulevard,  
 Los Angeles 45, California

MODEL  
890

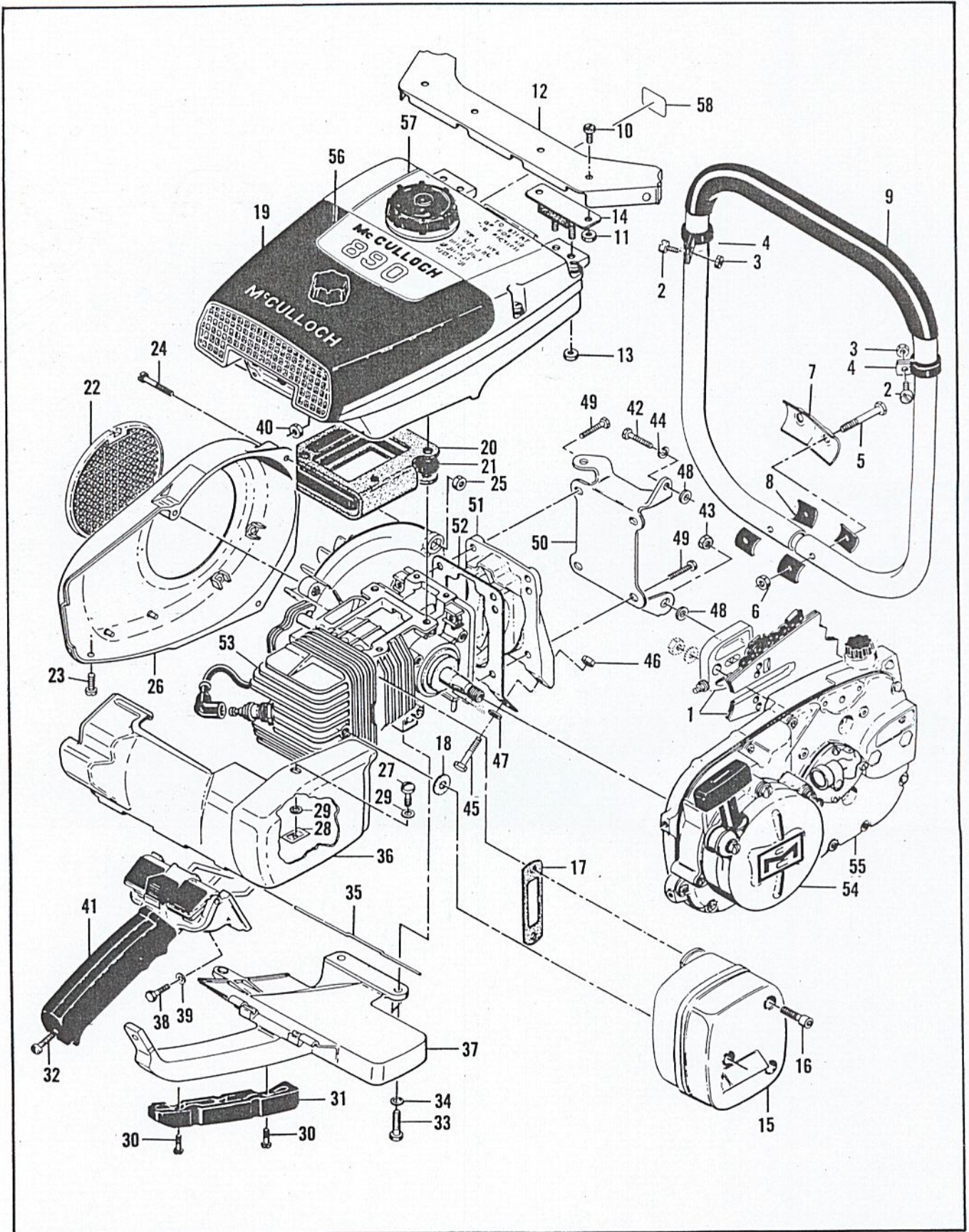


Figure 1. Engine Exploded View - General

FIGURE 1. ENGINE EXPLODED VIEW — GENERAL

Index No.	Part Number	Nomenclature	Units Per Assy
1		Lockplate Adjusting Assy, Bar and Chain (See Figure 7)	1
2	102761	Screw - Hex hd 10-24 x 7/8 in. lg	2
3	100239	Nut - Hex 10-24	2
4	103923	Clamp - Frame	2
5	102125	Screw - Hex hd 1/4-20 x 1-3/4 in. lg	2
6	101143	Nut - Hex 10-24	2
7	51660	Clamp - Frame	1
8	50062	Insulator - Frame	4
9	60766A	Frame and Grip Assy	1
10	104393	Screw - Pan hd 10-24 x 3/8 in. lg	4
11	101191	Nut - Hex 10-24	4
12	55638	Brace - Frame	1
13	101191	Nut - Hex 10-24	4
14	55606B	Mount - Shock	2
15	53480	Spark Arrester and Screw Assy	1
16	104895	Screw - Socket hd 10-24 x 5/8 in. lg	3
17	53652	Gasket - Spark Arrester	1
18	53651	Washer - Insulating	1
19		Fuel System Components (See Figure 2)	1
20	53768A	Gasket - Fuel tank insulator	1
21	53684A	Insulator - Fuel tank	1
22	55615	Guard - Flywheel	1
23	102500	Screw - Pan hd 10-24 x 1/2 in. lg	1
24	104816	Screw - 10-24 x 1-1/4 in. lg	3
25	101191	Nut - Hex 10-24	2
26	57733	Fan Housing	1
27	51351	Screw - Special	1
28	103741	Speednut	1
29	100005	Washer	2
30	104483	Screw - Binder hd 10-24 x 5/8 in. lg	2
31	55941	Insert - Handle	1
32	104397	Screw - Pan hd 10-24 x 7/8 in. lg	1
33	102121	Screw - Hex hd 1/4-20 x 7/8 in. lg	2
34	100005	Washer - Plain 1/4 in.	2
35	55885	Pin - Shroud hinge	1
36	55419A	Shroud Assy - Cylinder and spark arrester	1
37	57872	Brace - Handle	1
38	102761	Screw - Hex hd 10-24 x 7/8 in. lg	2
39	102189	Washer - Plain #10	2
40	102067	Nut - Hex 10-24	2
41		Handle and Control Assy (See Figure 9)	1
42	100882	Screw - Hex hd 1/4-20 x 3/4 in. lg	1
43	100640	Nut - Hex 1/4-28	1
44	100153	Lockwasher - 1/4 in.	1
45	100882	Screw - Hex hd 1/4-20 x 3/4 in. lg	1
46	101143	Nut - Hex 1/4-20	1
47	100005	Washer - Plain 1/4 in.	1
48	30351884	Washer - Trans. bracket	2
49	101982	Screw - Hex hd 1/4-20 x 1 in. lg	4
50	61225	Bracket - Gearcase	1
51	53473	Cover - Crankcase bottom	1
52	58166A	Gasket - Crankcase bottom cover	1
53		Powerhead Assy (See Figure 5)	1
54		Starter and Clutch Assy (See Figure 4)	1
55		Transmission Assy (See Figure 6)	1
56	61222	Nameplate	1
57	60425A	Instruction Plate	1
58	59445	Decal - Oiler	1



FIGURE 2. FUEL SYSTEM COMPONENTS

Index No.	Part Number	Nomenclature	Units Per Assy
	60427	Cover Assy - Air cleaner . . . . .	1
1	60243	. Knob - Air cleaner cover . . . . .	1
2	103741	. Speednut . . . . .	1
3		. Cover - Air cleaner . . . . . (Order Assy# 60427)	1
4	55498	Screen - Air cleaner . . . . .	1
5	55659	Grill - Air cleaner cover . . . . .	1
6	104396	Screw - Pan hd 10-24 x 3/4 in. lg . . . . .	1
7	55634	Anchor Assy - Air cleaner . . . . .	1
8	53678A	Hose - Fuel line . . . . .	1
9	61754	Lever Assy - Governor . . . . .	1
10	104154	. Screw - Set 8-32 x 1/4 in. lg . . . . .	1
11	55958	Arm Assy - Governor . . . . .	1
12	61757	Spring - Governor . . . . .	1
13		McCulloch Carburetor and Fuel Collector Assemblies (See Figure 3) . . . . .	1
14	55934B	Cap Assy - Fuel . . . . .	1
15	55063	. Filter - Fuel cap . . . . .	1
16	53766A	. Valve - Check . . . . .	1
17	101348	"O" Ring - Fuel cap . . . . .	1
18	104396	Screw - Pan hd 10-24 x 3/4 in. lg . . . . .	14
19	53682	Cover - Fuel tank . . . . .	1
20	55627A	Gasket - Fuel tank . . . . .	1
21	53679B	Pickup Assy - Fuel . . . . .	1
22	61159	. Filter - Fuel pickup . . . . .	1
23	53678A	Hose - Fuel line . . . . .	1
24	100640	Nut - Hex 1/4-28 . . . . .	1
25	53675A	Fitting - Fuel hose . . . . .	1
26	50832A	Washer - Sealing . . . . .	1
27	53837A	Liner - Fuel tank . . . . .	1
28	102151	Screw - Hex hd 1/4-20 x 1/2 in. lg . . . . .	1
29	100246	Lockwasher . . . . .	1
30	55948A	Screw - Fuel tank . . . . .	4
31	58376	Lockplate . . . . .	1
32	55636	Washer - Insulating . . . . .	4
33	102189	Washer . . . . .	2
34	103744	Washer - Sealing . . . . .	2
35	103740	Screw - Hex hd 8-32 x 7/8 in. lg . . . . .	2
36	51480	Lockplate . . . . .	1
37	57658	Clamp - Reed . . . . .	1
38	53686	Deflector - Fuel . . . . .	1
39	48593	Valve - Reed . . . . .	1
40	53685A	Plate - Reed . . . . .	1
41	58328B	Gasket . . . . .	1
42	102941	Screw - Hex hd 10-24 x 1/2 in. lg . . . . .	3
43	102189	Washer . . . . .	3
44	55636	Washer - Insulating . . . . .	2
45	55907A	Shield Assy - Fuel tank . . . . .	1
	61533	Bottom Assy - Fuel tank . . . . .	1
46	104504	. Rivet . . . . .	1
47	101871	. Washer - Plain . . . . .	1
48	51396A	. Cover Assy - Adjustment hole . . . . .	1
49	104310	. Pin - Cotter . . . . .	1
50	60237	. Grommet . . . . .	2
51	103708	. Bushing . . . . .	1
52	110054	. Screw - Pan hd 6-32 x 3/8 in. lg (SEMS) . . . . .	2
53		. Fuel Tank Bottom . . . . . (Order Fuel Tank Bottom Assy 61533)	1

MODEL  
890

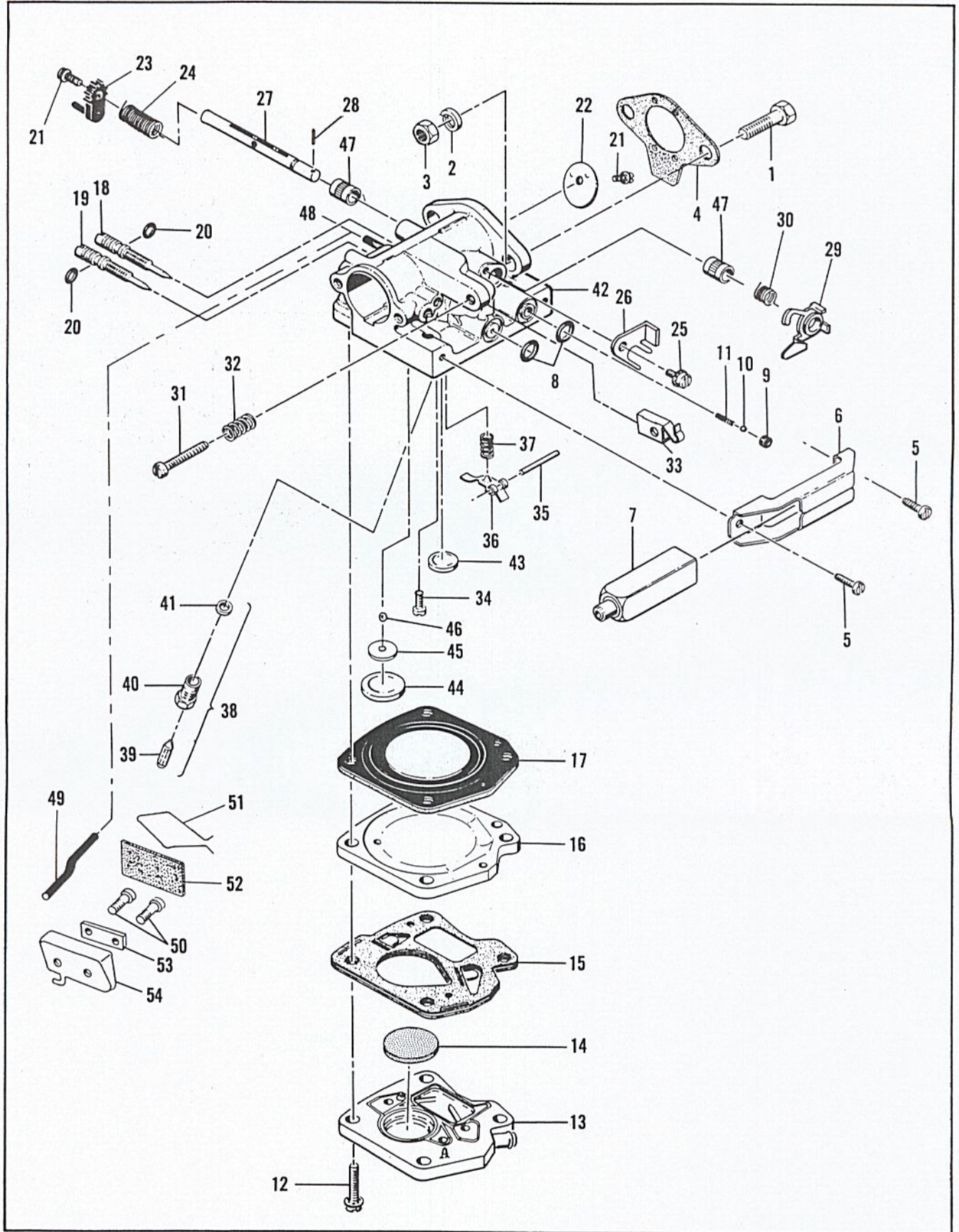


Figure 3. McCulloch Carburetor Assembly

FIGURE 3. McCULLOCH CARBURETOR ASSEMBLY

Index No.	Part Number	Nomenclature	Units Per Assy
1	100882	Screw - Hex hd 1/4-20 x 3/4 in. lg . . . . .	2
2	101476	Lockwasher - 1/4 in. . . . .	2
3	103242	Nut - Hex 1/4-20 . . . . .	2
4	51161D	Gasket - Carburetor . . . . .	1
	61759	Carburetor Assy - McCulloch . . . . .	1
5	110054	. Screw - Pan hd 6-32 x 3/8 in. lg . . . . .	2
6	53440	. Bracket - Primer mounting . . . . .	1
7	53449	. Primer Assy . . . . .	1
8	101056	. "O" Ring . . . . .	2
9	59480	. Seat - Primer valve . . . . .	1
10	100302	. Ball - Steel 1/8 in. dia . . . . .	1
11	28754	. Spring - Primer . . . . .	1
12	104520	. Screw - 10-24 x 7/8 in. lg. (SEMS) . . . . .	4
13	57667	. Body Assy - Fuel pump . . . . .	1
14	57277	. Filter - Fuel pump . . . . .	1
15	57274B	. Diaphragm Assy - Fuel pump . . . . .	1
16	48901	. Plate - Carburetor diaphragm . . . . .	1
17	55067C	. Diaphragm - Carburetor . . . . .	1
18	53948	. Needle - Idle adjustment . . . . .	1
19	53311	. Needle - Main adjustment . . . . .	1
20	104001	. "O" Ring . . . . .	2
21	104814	. Screw - Pan hd 4-40 x 1/4 in. lg. (SEMS) . . . . .	2
22	61360	. Plate - Throttle . . . . .	1
23	61901	. Arm - Throttle shaft . . . . .	1
24	61895	. Spring - Idle governor . . . . .	1
25	110055	. Screw - 8-32 x 3/8 in. lg. (SEMS) . . . . .	1
26	61891	. Clip - Shaft . . . . .	1
27	61920	. Shaft and Pin Assy . . . . .	1
28	110301	. Pin - Groove . . . . .	1
29	61894	. Cam Assy . . . . .	1
30	61906	. Spring - Cam . . . . .	1
31	61119	. Screw - Fil hd 8-36 x 15/16 in. lg. . . . .	1
32	51705	. Spring - Idle screw . . . . .	1
33	61108	. Guide - Throttle rod . . . . .	1
34	104164	. Screw - Pan hd 4-40 x 1/4 in. lg. . . . .	1
35	104305	. Pin - Lever . . . . .	1
36	55688	. Lever - Inlet control . . . . .	1
37	57172	. Spring - Inlet control . . . . .	1
38	60163A	. Valve Set - Needle and body . . . . .	1
39	59710	. Needle - Inlet control . . . . .	1
40	58969	. Body - Inlet control . . . . .	1
41	55689	. Washer - Inlet control . . . . .	1
42	61364	. Body Assy - Carburetor . . . . .	1
43	102758	. Plug - Expansion 1/2 in. . . . .	1
44	104407	. Plug - Expansion 1 in. . . . .	1
45	61152	. Seat - Ball valve . . . . .	1
46	61151	. Ball - Valve . . . . .	1
47	55062A	. Bushing - Body . . . . .	2
48	47523	. Tube - Collector inlet . . . . .	1
49	58869A	Hose - Fuel collector . . . . .	1
50	110061	Screw - Pan hd 8-32 x 3/8 in. lg. . . . .	2
51	58920A	Retainer - Fuel absorber . . . . .	1
52	58865	Absorber - Fuel . . . . .	1
53	58864	Plate - Retaining . . . . .	1
54	58863A	Collector Assy - Fuel . . . . .	1

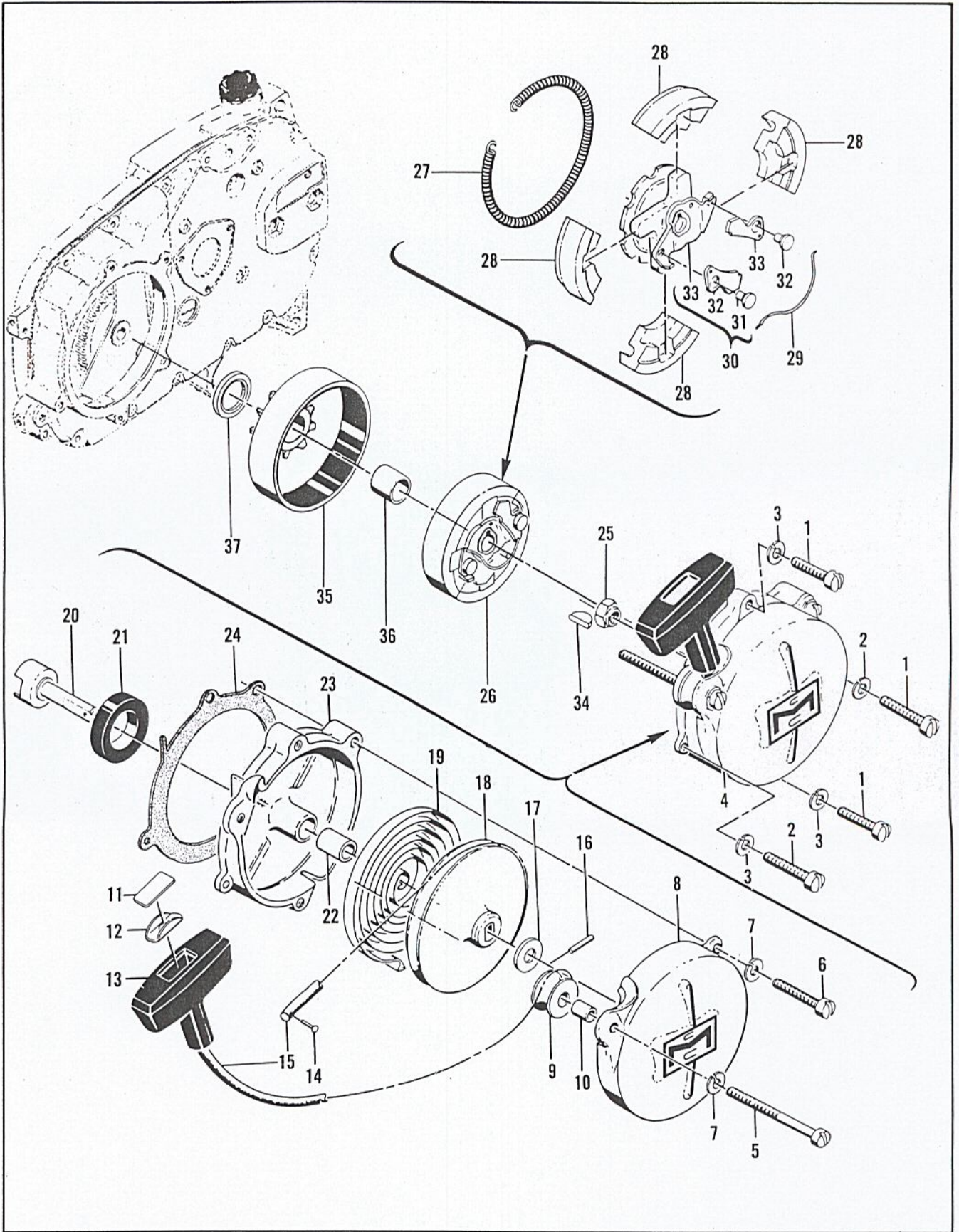


Figure 4. Starter and Clutch Assemblies



FIGURE 4. STARTER AND CLUTCH ASSEMBLIES

Index No.	Part Number	Nomenclature	Units Per Assy
1	102212	Screw - Fil hd 10-24 x 1-3/4 in. lg . . . . .	2
2	102135	Screw - Fil hd 10-24 x 2 in. lg . . . . .	2
3	101194	Lockwasher # 10 . . . . .	4
4	55129C	Starter Assy . . . . .	1
5	103840	. Screw - Fil hd 10-24 x 3-1/2 in. lg . . . . .	1
6	102135	. Screw - Fil hd 10-24 x 2 in. lg . . . . .	1
7	100240	. Lockwasher # 10 . . . . .	2
8	55024B	. Cover - Starter . . . . .	1
9	51138	. Pulley - Starter rope . . . . .	1
10	103536	. Bearing - Starter pulley . . . . .	1
11	57232	. Plate - Starter handle . . . . .	1
12	57231	. Cup - Starter handle . . . . .	1
13	57230	. Handle - Starter . . . . .	1
14	101136	. Rivet . . . . .	1
15	28716	. Rope - Starter . . . . .	1
16	103047	. Pin - Roll . . . . .	1
17	104457	. Washer - Plain 3/8 in. . . . .	1
18	55871	. Drum - Starter . . . . .	1
19	51665	. Spring - Rewind . . . . .	1
20	55110	. Shaft - Starter . . . . .	1
21	104439	. Seal - Oil . . . . .	1
	51649B	. Base Assy - Starter . . . . .	1
22	55591	. . Bearing - Starter base . . . . .	1
23		. . Base - Starter . . . . . (Order Starter Base Assy # 51649B)	1
24	55983	Gasket - Starter base . . . . .	1
25	103746	Nut - Flex Loc 3/8-24 . . . . .	1
26	61227	Clutch Assy . . . . .	1
27	58850	. Spring - Shoe retaining . . . . .	1
28	61228	. Shoe - Clutch . . . . .	4
29	28766	. Spring - Starter pawl . . . . .	1
30	61322	. Rotor and Pawl Assy - Clutch . . . . .	1
31	28917	. . Pin - Starter pawl . . . . .	1
32	28765	. . Pawl - Starter . . . . .	1
33		. . Rotor Assy . . . . . (Order Rotor and Pawl Assy # 61322)	1
34	103879	Key - Woodruff . . . . .	1
35	61321	Drum and Liner Assy - Clutch . . . . .	1
36	51700	. Bushing - Clutch drum . . . . .	1
37	53713	Spacer - Clutch drum . . . . .	1

FIGURE 5. POWERHEAD ASSEMBLY

Index No.	Part Number	Nomenclature	Units Per Assy
1	101965	Screw - Fil hd 10-24 x 7/8 in. lg . . . . .	2
2	100003	Washer . . . . .	2
3	51253	Retainer - Coil . . . . .	2
4	51251	Lamination Assy - Coil . . . . .	1
	55949A	Coil and Terminal Assy . . . . .	1
5	101883	. Wire Assy - Ground . . . . .	1
6	52547	. Wire Assy - Spark plug . . . . .	1
7	55060	. . Boot - Spark plug . . . . .	1
8	55061	. . Connector - Spark plug wire . . . . .	1
9	55617	. Nipple - Spark plug . . . . .	1
10		. Coil Assy . . . . . (Order Coil and Terminal Assy # 55949A)	1
11		Plug - Spark 14 mm . . . . .	1
12	101179	Nut - Hex 7/16 . . . . .	1
13	101270	Washer - Special . . . . .	1
14	57825B	Flywheel Assy . . . . .	1
15	103879	Key - Woodruff . . . . .	1
16	102763	Screw - Hex hd 10-24 x 3/4 in. lg . . . . .	2

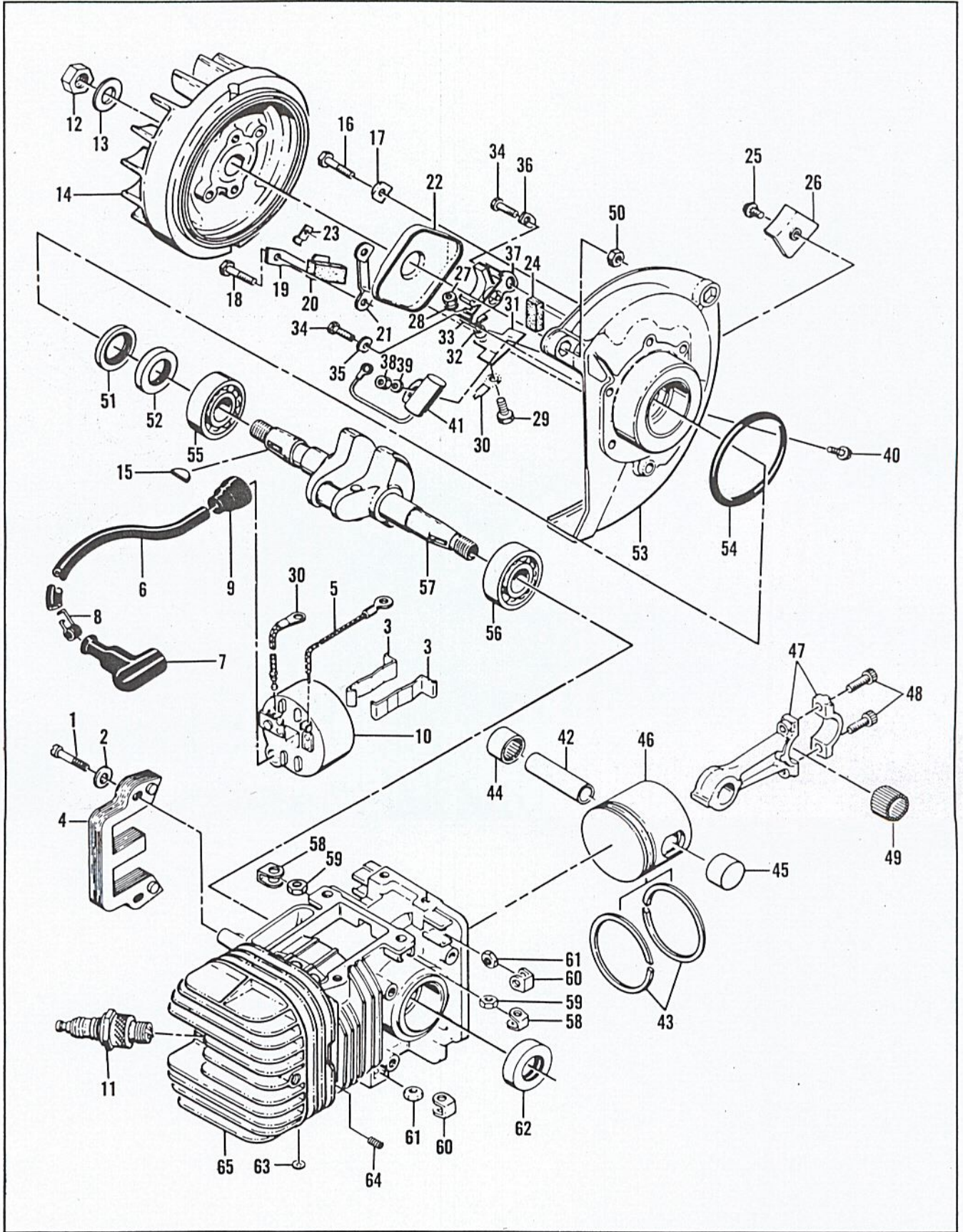


Figure 5. Powerhead Assembly

FIGURE 5. POWERHEAD ASSEMBLY (cont)

Index No.	Part Number	Nomenclature	Units Per Assy
17	36388	Lockplate . . . . .	1
18	102763	Screw - Hex hd 10-24 x 3/4 in. lg . . . . .	4
19	57815	Strap - Seal . . . . .	1
20	50664	Seal - Breaker box drain . . . . .	1
21	55977	Clip - Breaker box cover . . . . .	2
22	55766B	Cover - Breaker box . . . . .	1
23	104230	Speednut . . . . .	1
24	54184	Wiper - Felt . . . . .	1
25	110055	Screw - 8-32 x 3/8 in. lg (SEMS) . . . . .	1
26	57829	Clamp - Ignition wire . . . . .	1
27	104551	Nut - Hex 8-32 . . . . .	1
28	104553	Lockwasher . . . . .	1
29	103748	Screw - Hex hd 8-32 x 1/2 in. lg . . . . .	1
30	57766	Wire Assy - Primary . . . . .	1
31	55782	Insulator - Primary wire assy . . . . .	1
32	57769	Insulator - Ignition screw . . . . .	1
33	57770A	Insulator - Breaker spring . . . . .	1
34	104733	Screw - 8-32 x 1/2 in. lg (SEMS) . . . . .	2
35	57767A	Lockplate . . . . .	1
36	55778C	Washer - Breaker retainer . . . . .	1
37	57765A	Breaker Assy . . . . .	1
38	100955	Nut - Hex 8-32 . . . . .	1
39	100080	Washer - Plain # 8 . . . . .	1
40	104733	Screw - 8-32 x 1/2 in. lg (SEMS) . . . . .	1
41	50074	Condenser . . . . .	1
42	58132	Pin - Piston . . . . .	1
	58666	Piston Assy - 2.217 in. dia (Also see Oversize Assys - Page 19) . . . . .	1
43	58353	. Ring Set - Piston 2.217 in. dia. . . . .	1
44	101206	. Bearing - Needle . . . . .	1
45	104378	. Bearing - Needle (closed end) . . . . .	1
46		. Piston . . . . . (Order Piston Assy# 58666)	1
47	47782A	Connecting Rod Assy . . . . .	1
48	60210A	. Screw - Socket hd 10-32 x 5/8 in. lg. . . . .	2
49	102742	. Roller - Needle . . . . .	24
	57827	Crankcase Cover Assy . . . . .	1
50	101326	. Nut - Hex 10-24 . . . . .	2
51	57897	. Seal - Oil . . . . .	1
52	57898	. Seal - Oil . . . . .	1
53		. Cover - Crankcase . . . . . (Order Crankcase Cover Assy# 57827)	1
54	104523	"O" Ring . . . . .	1
55	100824	Bearing - Ball . . . . .	1
56	104490	Bearing - Ball . . . . .	1
57	58128	Crankshaft . . . . .	1
	61209	Cylinder Assy - Crankcase . . . . .	1
58	28053	. Retainer - Nut . . . . .	2
59	101326	. Nut - Hex 10-24 . . . . .	2
60	18556A	. Retainer - Nut . . . . .	6
61	101143	. Nut - Hex 1/4-20 . . . . .	6
62	57732	. Seal - Oil . . . . .	1
63	110179	. Plug - Expansion . . . . .	3
64	110034	. Insert - Taplok . . . . .	3
65		. Cylinder - Crankcase . . . . . (Order Cylinder-Crankcase Assy# 61209)	1



FIGURE 6. TRANSMISSION ASSEMBLY

Index No.	Part Number	Nomenclature	Units Per Assy
1	60972	Nut - Special	1
2	100593	Washer - 7/16 in.	1
3	51627	Plate - Chain guide	1
4	36791A	Sprocket - 7 tooth, 9/16 in. pitch	1
	36790A	Sprocket - 6 tooth, 9/16 in. pitch	1
	36644A	Sprocket - 7 tooth, 1/2 in. pitch	alternate
	36020B	Sprocket - 6 tooth, 1/2 in. pitch	alternate
	52069A	Sprocket - 7 tooth, 0.404 in. pitch	alternate
5	36019A	Shroud - Sprocket	alternate
6	100256	Key - Woodruff # 6	1
7	55737	Spacer - Sprocket	1
8	102415	Screw - Pan hd 10-24 x 3/8 in. lg	1
9	101194	Lockwasher	2
10	61224	Cover - Pushrod	2
	61783	Kit - Spike	1
11	100882	Screw - Hex hd 1/4-20 x 3/4 in. lg	1
12	101143	Nut - Hex 1/4-20	2
13		Spike	2
14	103258	Screw - Hex hd 1/4-20 x 1-1/8 in. lg	1
15	36306	Lockplate	3
16	104535	"O" Ring	1
17	55449A	Washer - Oiler rod felt	1
	60633	Transmission Assy 2:1	1
18	51631A	Bolt - Bar mounting	1
19	104835	Screw - Pan hd 10-24 x 1/2 in. lg	2
20	60408	Retainer - Bearing	4
21	60409	Gasket - Retainer	1
22	104869	Plug - Pipe 1/16-27	1
23	104218	Plug - Pipe 3/8-18	1
24	103464	Screw - Hex hd 10-24 x 3/4 in. lg (SEMS)	1
25	103947	Screw - Hex hd 10-24 x 1 in. lg (SEMS)	11
26	58779	Cover - Gearcase	3
27	55913C	Gasket - Gearcase cover	1
28	104298	Seal - Oil	1
29	101039	Bearing	1
30	55715	Spacer - Gear	2
31	60407	Spacer - Gear	1
	60420	Shaft and Sprocket Gear Assy	1
32	104451	Ring - Retaining	1
33	57999	Gear - Sprocket drive	1
34	55953	Key - Sprocket gear	1
35	60470	Shaft - Sprocket	1
	60461	Gearcase Assy	1
36	103280	Screw - Hex hd 1/4-28 x 5/8 in. lg	1
37	102901	Screw - Hex hd 1/4-28 x 1 in. lg	1
38	30351884	Washer - Plain 1/4 in.	1
39	60186	Strap - Idler yoke	2
40	100993	Pin - Dowel	2
41	100010	Pin - Cotter	1
42	60389	Valve Assy - Check	1
43		Gearcase (Order Gearcase Assy # 60461)	1
44	100640	Nut - Hex 1/4-28	1
45	104351	Screw - Hex hd 1/4-28 x 1-13/32 in. lg	2
46	55539	Lockplate - Yoke	1
47	55722	Gear and Yoke Assy	1
48	100201	Screw - Socket hd 1/4-28 x 1/2 in. lg	1
49	100640	Locknut - Hex 1/4-28	1
50	57493	Hub - Bearing	1
51	53820	Yoke Assy	2
52	55728	Gear - Idler	1
53	100824	Bearing - Ball	1

This list is continued on page 15

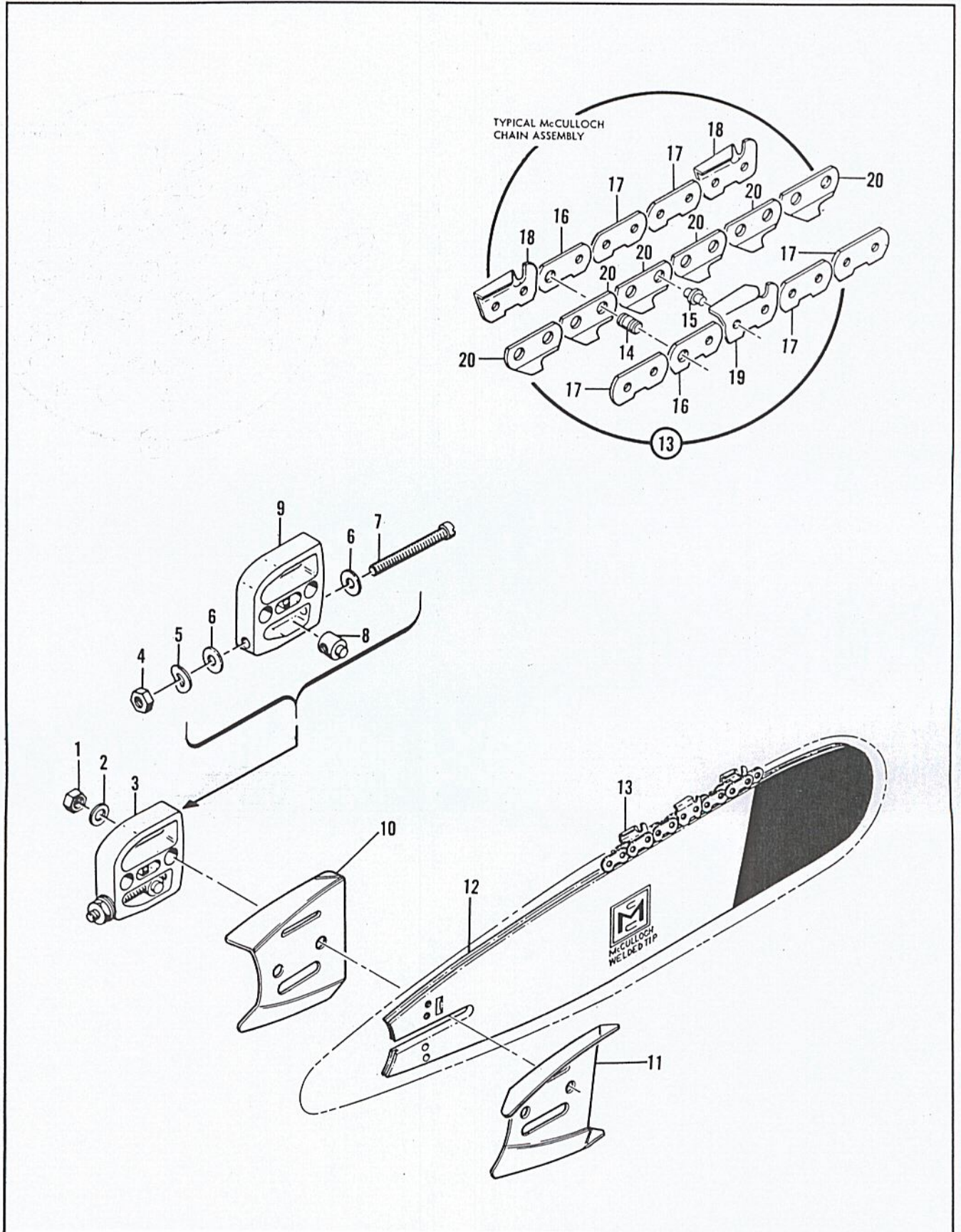


Figure 7. Lockplate Adjusting Assembly, Bar and Chain

FIGURE 6. TRANSMISSION ASSEMBLY (cont)

Index No.	Part Number	Nomenclature	Units Per Assy
54	51505	Weight Assy	1
55	51506	Screen - Pickup	1
56	28007	Hose - Pickup	1
57	51755	Plug - Oiler valve	1
58	51944	Spring	1
59	100549	Ball - Steel 0.188 in. dia	1
	60622A	Body Assy - Oiler	1
60	57721B	Body - Oiler	1
61	101056	"O" Ring	1
62	19236	Spring - Oiler	1
	51472	Piston Assy - Oiler	1
63	101056	"O" Ring	1
64	36126	Piston - Oiler	1
65	57129A	Cap - Filler	1
66	101148	"O" Ring	1
67	60466C	Pump and Gasket Assy - Oiler (2:1)	1
68	110172	Screw - Special	4
69	60409	Gasket - Oiler pump	1
70	61398	Screw - Special	1
71	60959	Plug - Special	1
72	60964	Shim - 0.015 in.	as required
73	104791	Plug - Expansion 5/8 in.	1
74	61810	Plunger - Oiler pump (2:1)	1
	62115	Gear Set - 3:1 Transmission Ratio Conversion	1
	62114	Gear Set - 3.6:1 Transmission Ratio Conversion	1
	60914C	Pump and Gasket Assy - Oiler (3:1 Transmission Ratio)	1
	60915C	Pump and Gaskey Assy - Oiler (3.6:1 Transmission Ratio)	1

FIGURE 7. LOCK PLATE ADJUSTING ASSEMBLY, BAR AND CHAIN

Index No.	Part Number	Nomenclature	Units Per Assy
1	103729	Nut - Hex 3/8-24	2
2	100393	Washer - 3/8 in.	2
3	52211D	Lockplate Adjusting Assy	1
4	100640	Nut - Hex 1/4-28	1
5	102813	Washer - Spring	1
6	102843	Washer - Plain 1/4 in.	2
7	103919	Screw - Fil hd 1/4-28 x 2-1/2 in. lg	1
8	52207C	Nut - Adjusting	1
9	52206B	Lockplate	1
10	61995	Plate - Bar - L. H.	1
11	61996	Plate - Bar - R. H.	1
12	51405A	Bar - 18 in.	1
	51407A	Bar - 24 in. (alternate)	1
	51409A	Bar - 30 in. (alternate)	1
13		Typical McCulloch Chain Assy	1
14		Master Pin	
15		Shoulder Rivet	
16		Master Link	
17		Side Link	
18		Cutter - L. H.	
19		Cutter - R. H.	
20		Center Link	

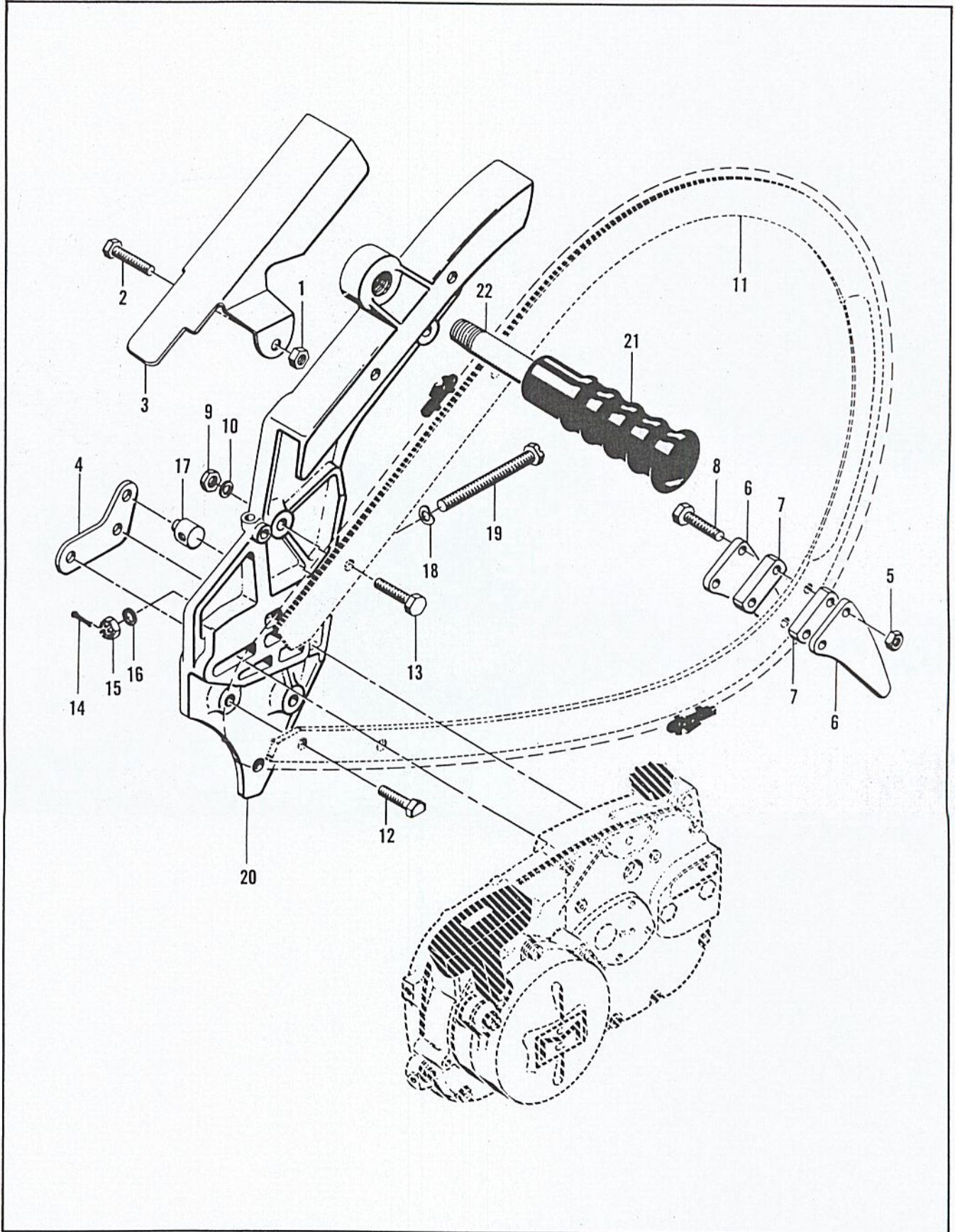


Figure 8. Plunge Bow Saw Assembly



FIGURE 8. PLUNGE BOW SAW ASSEMBLY

Index No.	Part Number	Nomenclature	Units Per Assy
	55152	Plunge Bow Saw Assy (less track) . . . . .	1
1	*101143	. Nut - Hex 1/4-20 . . . . .	1
2	*102128	. Screw - Hex hd 1/4-20 x 1-1/4 in. lg . . . . .	1
3	*57494A	. Guard - Chain (bow saw) . . . . .	1
4	*51674	. Plate - Adjusting . . . . .	1
5	*101143	. Nut - Hex 1/4-20 . . . . .	2
6	*28256	. Spike . . . . .	2
7	*28259A	. Spacer . . . . .	2
8	*102130	. Bolt - Hex hd 1/4-20 x 1-1/2 in. lg . . . . .	2
9	*101143	. Nut - Hex 1/4-20 . . . . .	4
10	*100004	. Washer - Plain 1/4 in. . . . .	4
11		. Track (available through dealers) . . . . .	1
12	*51955	. Bolt - Special 1/4-20 x 1 in. lg . . . . .	1
13	*101982	. Bolt - Hex hd 1/4-20 x 1 in. lg . . . . .	3
14	101495	. Pin - Cotter 0.09 in. dia x 1/2 in. lg . . . . .	1
15	102022	. Nut - Castle 5/16 - 24 . . . . .	1
16	100007	. Washer - Plain 5/16 in. . . . .	1
17	19708	. Nut - Adjusting . . . . .	1
18	24260	. Spring - Thrust . . . . .	1
19	102193	. Screw - Adjusting . . . . .	1
20	51672	. Body Assy . . . . .	1
	19502	Auxiliary Handle Assy . . . . .	1
21	18207A	. Grip - Handle . . . . .	1
22	19476	. Auxiliary Handle . . . . .	1

\*Contained in loose parts package.

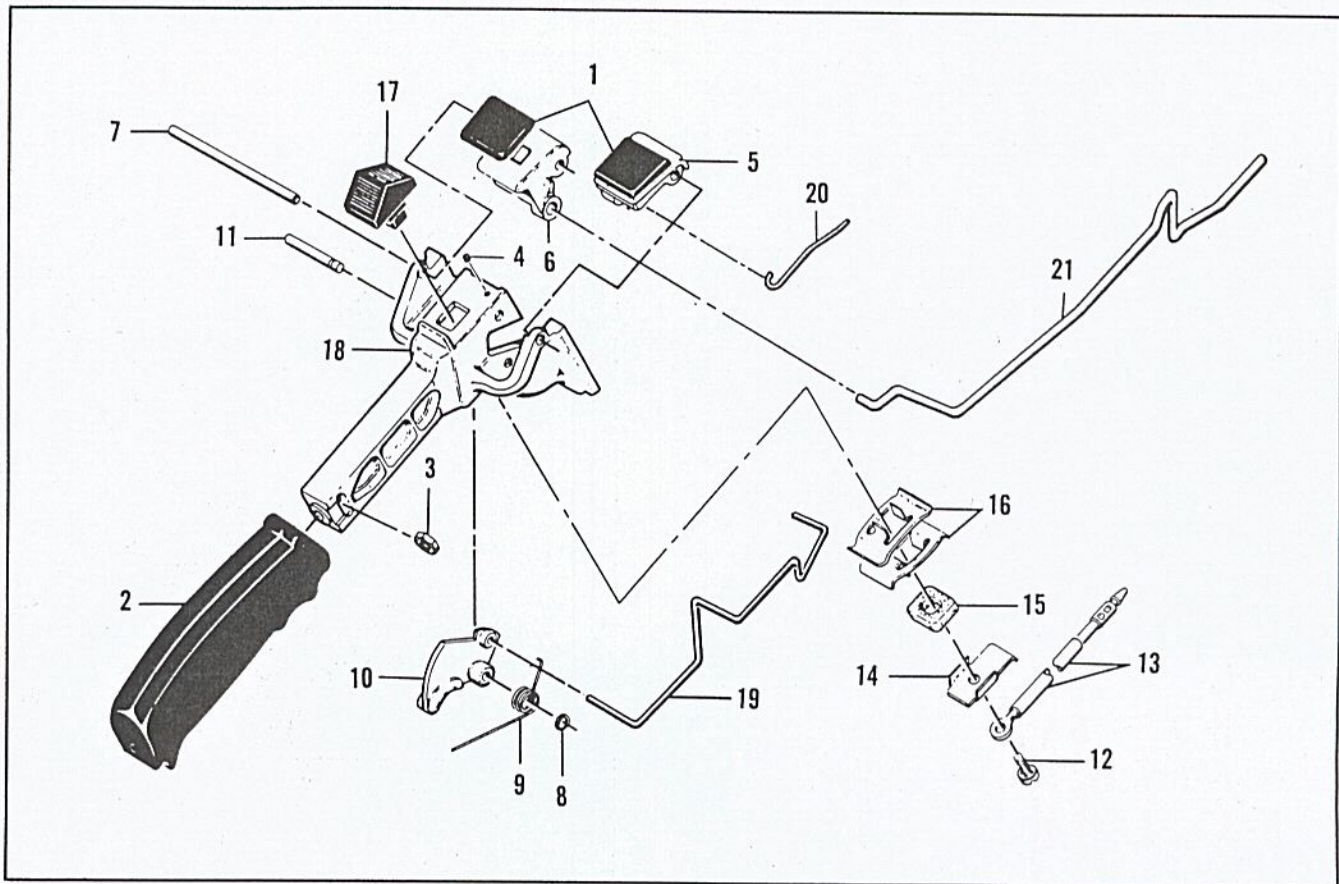


Figure 9. Handle and Control Assembly

**FIGURE 9. HANDLE AND CONTROL ASSEMBLY**

Index No.	Part Number	Nomenclature	Units Per Assy
1	55670	Grommet . . . . .	2
	53245	Handle and Control Assy . . . . .	1
2	55624A	. Grip - Handle . . . . .	1
3	101326	. Nut - Hex 10-24 . . . . .	1
4	104484	. Screw - Set 8-32 x 1/4 in. lg . . . . .	1
5	55968A	. Button - Primer control . . . . .	1
6	55969A	. Button - Oiler control . . . . .	1
7	51344A	. Shaft - Primer and oiler buttons . . . . .	1
8	104501	. Retainer - Trigger pin . . . . .	1
9	55674	. Spring - Trigger return . . . . .	1
10	55616	. Trigger . . . . .	1
11	50507	. Pin - Trigger . . . . .	1
12	110055	. Screw - Fil hd 8-32 x 3/8 in. lg (SEMS) . . . . .	1
13	51492A	. Wire Assy - Primary . . . . .	1
14	51279	. Contact - Switch . . . . .	1
15	51555	. Insulator - Switch . . . . .	1
16	51554A	. Detent - Switch . . . . .	2
17	57718	. Button - Switch . . . . .	1
18	55986	. Handle . . . . .	1
19	61907	Pushrod - Throttle . . . . .	1
20	53583A	Pushrod - Primer . . . . .	1
21	57719	Pushrod - Oiler . . . . .	1

**TOOLS AND ACCESSORIES**

Part Number	Nomenclature
*51445A	Wrench and Screwdriver Combination
*61422	Owner's Manual of Operating Instructions
*56625B	Chain Maintenance Manual
*14168A	Wrench - Spark plug
*59549	Wrench - Spark Arrester
18413A	Gauge - Feeler
56224	Chain Breaker - Rivet Spinner
56250	Depth Gauge Tool - 0.025 - 0.040 in.
56251	Depth Gauge Tool - 0.045 - 0.060 in.
102449	McCulloch Yellow Paint (12 oz spray bomb type can)
56409	McCulloch Oil (1 quart can)
56404	McCulloch Oil (12 oz can)

\*Items furnished with each saw.

**OVERSIZE PISTON ASSEMBLY**

Part Number	Nomenclature
58668	Piston Assy - 2.227 in. dia.
58394	. Ring Set - 2.227 in. dia.
101206	. Bearing - Needle
104378	. Bearing - Needle (closed end)
58667	Piston Assy - 2.237 in. dia.
58354	. Ring Set - 2.237 in. dia.
101206	. Bearing - Needle
104378	. Bearing - Needle (closed end)
58669	Piston Assy - 2.247 in. dia.
58395	. Ring Set - 2.247 in. dia.
101206	. Bearing - Needle
104378	. Bearing - Needle (closed end)