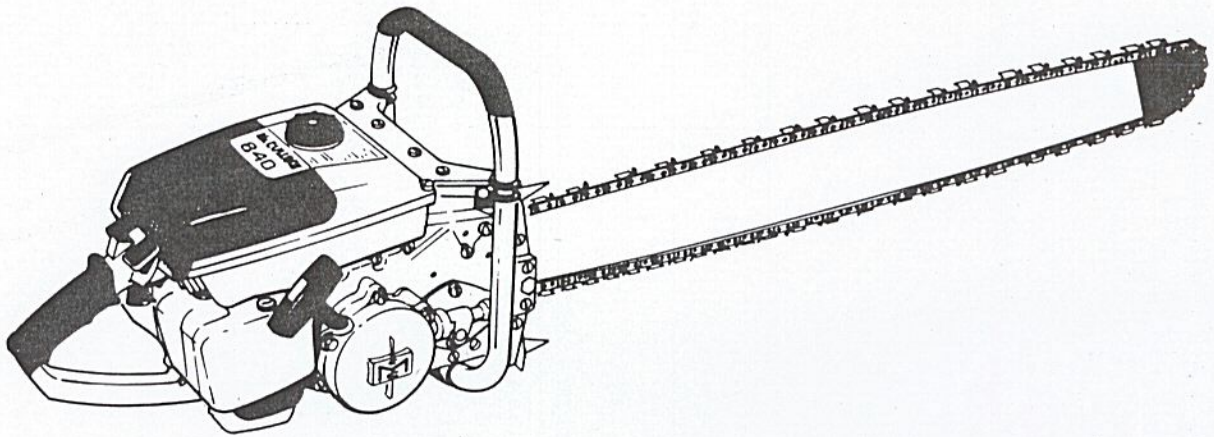


# ILLUSTRATED PARTS LIST

JULY 1967



The following pages contain an illustrated parts list for the Model 1-86 Chain Saw. Due to small differences between saws, it is important that the Serial Number of your saw be included whenever spare parts are ordered. This will assure receiving the proper parts from your dealer.

The McCulloch Corporation reserves the right to modify or change specifications without (1) prior notification or (2) obligation including the obligation to back-fit or supply back-fit components for units previously shipped from the factory.

	Page
Figure 1. Engine Exploded View - General . . . . .	2
Figure 2. Fuel System Components . . . . .	4
Figure 3. McCulloch Carburetor Assembly . . . . .	6
Figure 4. Starter and Clutch Assemblies . . . . .	8
Figure 5. Powerhead Assembly . . . . .	10
Figure 6. Transmission Assembly . . . . .	12
Figure 7. Lockplate Adjusting Assembly, Bar and Chain . .	14
Figure 8. Plunge Bow Saw Assembly . . . . .	16
Figure 9. Handle and Control Assembly . . . . .	19



**McCULLOCH CORPORATION**  
 8101 West Century Boulevard,  
 Los Angeles 45, California

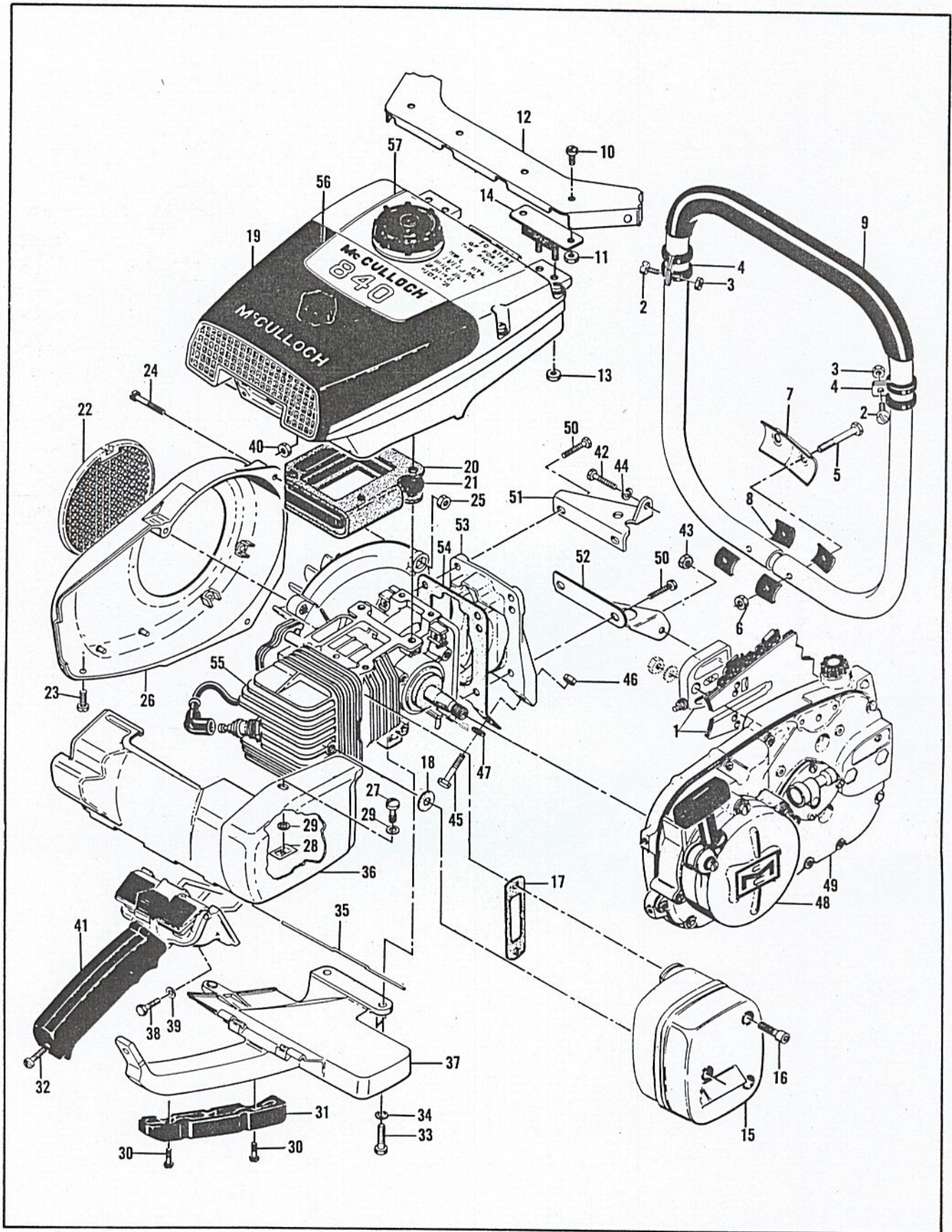


Figure 1. Engine Exploded View - General

FIGURE 1. ENGINE EXPLODED VIEW—GENERAL

Index No.	Part Number	Nomenclature	Units Per Assy
1		Lockplate Adjusting Assy, Bar and Chain (See figure 7)	1
2	102763	Screw - Hex hd 10-24 x 3/4 in. lg	2
3	100239	Nut - Hex 10-24	2
4	103923	Clamp - Frame	2
5	102125	Screw - Hex hd 1/4-20 x 1-3/4 in. lg	2
6	101143	Nut - Hex 10-24	2
7	51660	Clamp - Frame	1
8	50062	Insulator - Frame	4
9	60235	Frame and Grip Assy	1
10	104393	Screw - Pan hd 10-24 x 3/8 in. lg	4
11	101191	Nut - Hex 10-24	4
12	55638	Brace - Frame	1
13	101191	Nut - Hex 10-24	4
14	55606B	Mount - Shock	2
15	53480	Muffler and Screw Assy	1
16	104895	Screw - Socket hd 10-24 x 5/8 in. lg	3
17	53652	Gasket - Muffler	1
18	53651	Washer - Insulating	1
19		Fuel System Components (See figure 2)	1
20	53768	Gasket - Fuel tank insulator	1
21	53684	Insulator - Fuel tank	1
22	55615	Guard - Flywheel	1
23	102500	Screw - Pan hd 10-24 x 1/2 in. lg	1
24	104816	Screw - 10-24 x 1-1/4 in. lg	3
25	101191	Nut - Hex 10-24	2
26	57733	Fan Housing	1
27	51351	Screw - Special	1
28	103741	Speednut	1
29	100005	Washer	2
30	104483	Screw - Binder hd 10-24 x 5/8 in. lg	2
31	55941	Insert - Handle	1
32	104397	Screw - Pan hd 10-24 x 7/8 in. lg	1
33	102121	Screw - Hex hd 1/4-20 x 7/8 in. lg	2
34	100005	Washer - Plain 1/4 in.	2
35	55885	Pin - Shroud hinge	1
36	55419A	Shroud Assy - Cylinder and muffler	1
37	57872	Brace - Handle	1
38	102761	Screw - Hex hd 10-24 x 7/8 in. lg	2
39	102189	Washer - Plain #10	2
40	102067	Nut - Hex 10-24	2
41		Handle and Control Assy (See figure 9)	1
42	100882	Screw - Hex hd 1/4-20 x 3/4 in. lg	1
43	100640	Nut - Hex 1/4 - 28	1
44	100153	Lockwasher - 1/4 in.	1
45	100882	Screw - Hex hd 1/4-20 x 3/4 in. lg	1
46	101143	Nut - Hex 1/4-20	1
47	100005	Washer - Plain 1/4 in.	1
48		Starter and Clutch Assy (See figure 4)	1
49		Transmission Assy (See figure 6)	1
50	101982	Screw - Hex hd 1/4-20 x 1 in. lg	4
51	51795A	Brace - Gearcase top	1
52	55537	Brace - Gearcase bottom	1
53	53473	Cover - Crankcase bottom	1
54	58166A	Gasket - Crankcase bottom cover	1
55		Powerhead Assy (See figure 5)	1
56	60445	Nameplate	1
57	60425	Instruction Plate	1



FIGURE 2. FUEL SYSTEM COMPONENTS

Index No.	Part Number	Nomenclature	Units Per Assy
	60427	Cover Assy - Air cleaner . . . . .	1
1	60243	. Knob - Air cleaner cover . . . . .	1
2	103741	. Speednut . . . . .	1
3		. Cover - Air cleaner (Order Assy #60427) . . . . .	1
4	55498	Screen - Air cleaner . . . . .	1
5	55659	Grill - Air cleaner cover . . . . .	1
6	104396	Screw - Pan hd 10-24 x 3/4 in. lg . . . . .	1
7	55634	Anchor Assy - Air cleaner . . . . .	1
8	53678	Hose - Fuel line . . . . .	1
9	55964A	Lever Assy - Governor . . . . .	1
10	104154	. Screw - Set 8-32 x 1/4 in. lg . . . . .	1
11	55958	Arm Assy - Governor . . . . .	1
12	55966B	Spring - Governor . . . . .	1
13		McCulloch Carburetor and Fuel Collector Assemblies (See figure 3) . . . .	1
14	55934B	Cap Assy - Fuel . . . . .	1
15	55063	. Filter - Fuel cap . . . . .	1
16	53766	. Valve - Check . . . . .	1
17	101348	"O" Ring - Fuel cap . . . . .	1
18	104396	Screw - Pan hd 10-24 x 3/4 in. lg . . . . .	14
19	53682	Cover - Fuel tank . . . . .	1
20	55627A	Gasket - Fuel tank . . . . .	1
21	53679A	Pickup Assy - Fuel . . . . .	1
22	104959	. Pin - Fuel pickup . . . . .	1
23	104958	. Filter - Fuel pickup . . . . .	1
24	110065	. Ring - Fuel pickup . . . . .	2
25	53678	Hose - Fuel line . . . . .	1
26	100640	Nut - Hex 1/4-28 . . . . .	1
27	53675	Fitting - Fuel hose . . . . .	1
28	50832A	Washer - Sealing . . . . .	1
29	53837A	Liner - Fuel tank . . . . .	1
30	102151	Screw - Hex hd 1/4-20 x 1/2 in. lg . . . . .	1
31	100246	Lockwasher . . . . .	1
32	55948A	Screw - Fuel tank . . . . .	4
33	58376	Lockplate . . . . .	1
34	55636	Washer - Insulating . . . . .	4
35	102189	Washer . . . . .	2
36	103744	Washer - Sealing . . . . .	2
37	103740	Screw - Hex hd 8-32 x 7/8 in. lg . . . . .	2
38	51480	Lockplate . . . . .	1
39	53686	Deflector - Fuel . . . . .	1
40	48593	Valve - Reed . . . . .	1
41	53685	Plate - Reed . . . . .	1
42	58328A	Gasket . . . . .	1
43	102941	Screw - Hex hd 10-24 x 1/2 in. lg . . . . .	3
44	102189	Washer . . . . .	3
45	55636	Washer - Insulating . . . . .	2
46	55907A	Shield Assy - Fuel tank . . . . .	1
47	55647	Retainer - Throttle rod . . . . .	1
48	51394	Felt - Pushrod . . . . .	1
	55805E	Bottom Assy - Fuel tank . . . . .	1
49	104504	. Rivet . . . . .	1
50	101871	. Washer - Plain . . . . .	1
51	51396A	. Cover Assy - Adjustment hole . . . . .	1
52	104310	. Pin - Cotter . . . . .	1
53	60237	. Grommet . . . . .	2
54	103708	. Bushing . . . . .	1
55	104769	. Screw - Pan hd 6-32 x 3/8 in. lg . . . . .	2
56	100296	. Washer - Plain #6 . . . . .	2
57		. Fuel Tank Bottom (Order Fuel Tank Bottom Assy #55805E) . . . . .	1

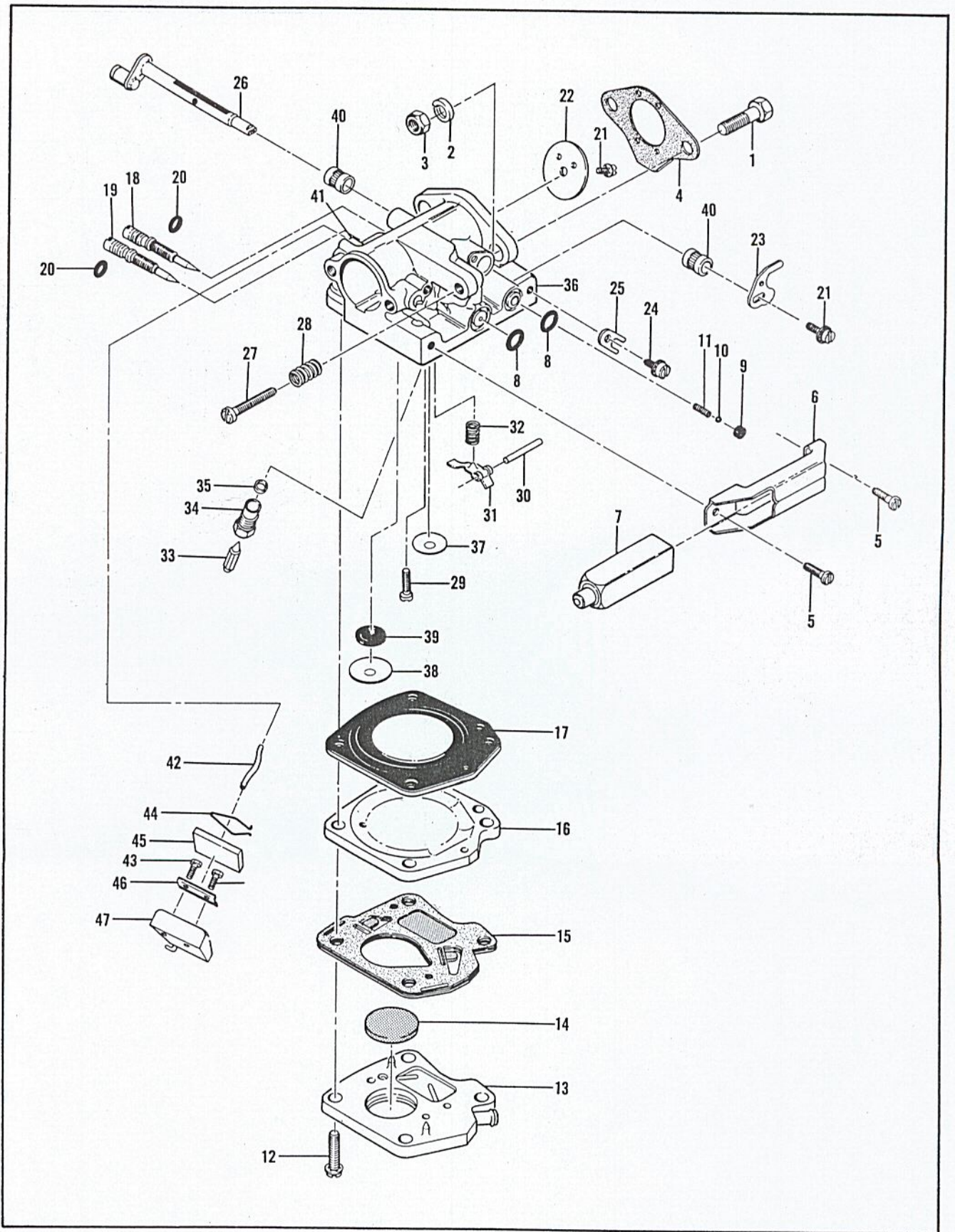


Figure 3. McCulloch Carburetor Assembly

FIGURE 3. McCULLOCH CARBURETOR ASSEMBLY

Index No.	Part Number	Nomenclature	Units Per Assy
1	100882	Screw - Hex hd 1/4-20 x 3/4 in. lg . . . . .	2
2	101476	Lockwasher - 1/4 in. . . . .	2
3	103242	Nut - Hex 1/4-20 . . . . .	2
4	51161D	Gasket - Carburetor . . . . .	1
	53946B	Carburetor Assy - McCulloch . . . . .	1
5	110054	. Screw - Pan hd 6-32 x 3/8 in. lg . . . . .	2
6	53440	. Bracket - Primer mounting . . . . .	1
7	53449	. Primer Assy . . . . .	1
8	101056	. "O" Ring . . . . .	2
9	59480	. Seat - Primer valve . . . . .	1
10	100302	. Ball - Steel 1/8 in. dia . . . . .	1
11	28754	. Spring - Primer . . . . .	1
12	104520	. Screw - 10-24 x 7/8 in. lg (SEMS) . . . . .	4
13	58965	. Body Assy - Fuel pump . . . . .	1
14	57277	. Filter - Fuel pump . . . . .	1
15	57274A	. Diaphragm Assy - Fuel pump . . . . .	1
16	48901	. Plate - Carburetor diaphragm . . . . .	1
17	55067C	. Diaphragm - Carburetor . . . . .	1
18	53948	. Needle - Idle adjustment . . . . .	1
19	53949	. Needle - Main adjustment . . . . .	1
20	104001	. "O" Ring . . . . .	2
21	104814	. Screw - Pan hd 4-40 x 1/4 in. lg (SEMS) . . . . .	2
22	53309	. Plate - Throttle . . . . .	1
23	53582A	. Arm - Throttle shaft . . . . .	1
24	110055	. Screw - 8-32 x 3/8 in. lg (SEMS) . . . . .	1
25	55082	. Clip - Shaft . . . . .	1
26	55077A	. Shaft and Roller Assy . . . . .	1
27	55397	. Screw - Fil hd 8-36 x 15/16 in. lg . . . . .	1
28	51705	. Spring - Idle screw . . . . .	1
29	104164	. Screw - Pan hd 4-40 x 1/4 in. lg . . . . .	1
30	104305	. Pin - Lever . . . . .	1
31	55688	. Lever - Inlet control . . . . .	1
32	57172	. Spring - Inlet control . . . . .	1
33	59710	. Needle - Inlet control . . . . .	1
34	58969	. Body - Inlet control valve . . . . .	1
35	55689	. Washer - Valve seat . . . . .	1
36	58852	. Body Assy - Carburetor . . . . .	1
37	102758	. Plug - Expansion 1/2 in. . . . .	1
38	104407	. Plug - Expansion 1 in. . . . .	1
39	55690B	. Seal - Capillary . . . . .	1
40	55062A	. Bushing - Carburetor body . . . . .	2
41	47523	. Tube - Collector inlet . . . . .	1
42	58869A	Hose - Fuel collector . . . . .	1
43	110061	Screw - Pan hd 8-32 x 3/8 in. lg . . . . .	2
44	58920A	Retainer - Fuel absorber . . . . .	1
45	58865	Absorber - Fuel . . . . .	1
46	58864	Plate - Retaining . . . . .	1
47	58863A	Collector Assy - Fuel . . . . .	1

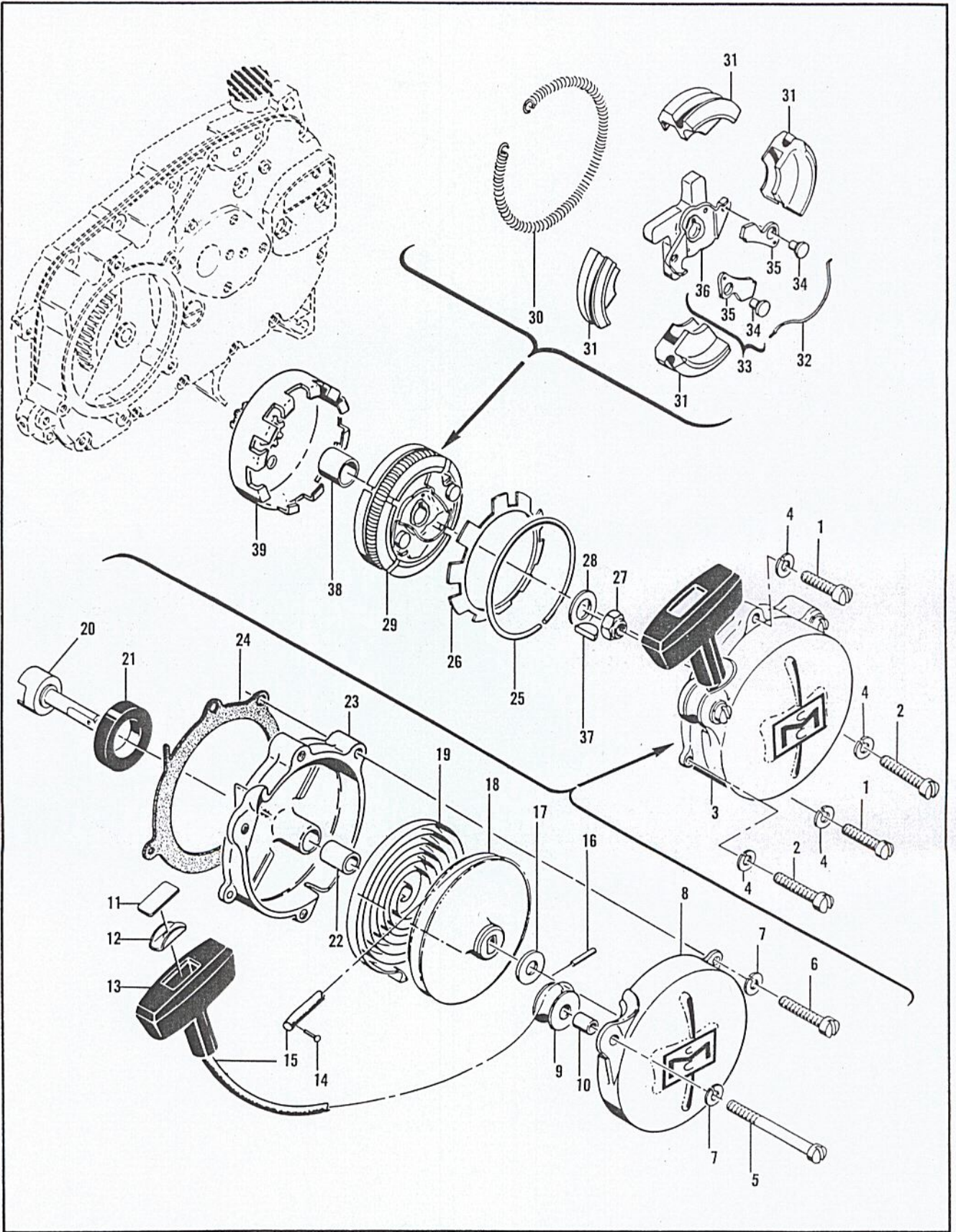


Figure 4. Starter and Clutch Assemblies



FIGURE 4. STARTER AND CLUTCH ASSEMBLIES

Index No.	Part Number	Nomenclature	Units Per Assy
1	102212	Screw - Fil hd 10-24 x 1-3/4 in. lg . . . . .	2
2	102135	Screw - Fil hd 10-24 x 2 in. lg . . . . .	2
3	55129C	Starter Assy . . . . .	1
4	101194	. Lockwasher #10 . . . . .	4
5	103840	. Screw - Fil hd 10-24 x 3-1/2 in. lg . . . . .	1
6	102135	. Screw - Fil hd 10-24 x 2 in. lg . . . . .	1
7	100240	. Lockwasher #10 . . . . .	2
8	55024B	. Cover - Starter . . . . .	1
9	51138	. Pulley - Starter rope . . . . .	1
10	103536	. Bearing - Starter pulley . . . . .	1
11	57232	. Plate - Starter handle . . . . .	1
12	57231	. Cup - Starter handle . . . . .	1
13	57230	. Handle - Starter . . . . .	1
14	101136	. Rivet . . . . .	1
15	28716	. Rope - Starter . . . . .	1
16	103047	. Pin - Roll . . . . .	1
17	104457	. Washer - Plain 3/8 in. . . . .	1
18	55871	. Drum - Starter . . . . .	1
19	51665	. Spring - Rewind . . . . .	1
20	55110	. Shaft - Starter . . . . .	1
21	104439	. Seal - Oil . . . . .	1
	51649B	. Base Assy - Starter . . . . .	1
22	55591	. . Bearing - Starter base . . . . .	1
23		. . Base - Starter (Order Starter Base Assy #51649B) . . . . .	1
24	55983	Gasket - Starter base . . . . .	1
25	53294	Ring - Retaining 0.040 in. . . . .	1
	53295	Ring - Retaining 0.047 in. . . . .	alternate
	53296	Ring - Retaining 0.055 in. . . . .	alternate
	53297	Ring - Retaining 0.063 in. . . . .	alternate
	53298	Ring - Retaining 0.071 in. . . . .	alternate
	53299	Ring - Retaining 0.080 in. . . . .	alternate
	53300	Ring - Retaining 0.090 in. . . . .	alternate
	53301	Ring - Retaining 0.106 in. . . . .	alternate
	53302	Ring - Retaining 0.118 in. . . . .	alternate
26	51645A	Disc - Clutch friction . . . . .	1
27	103746	Nut - Flexloc - 3/8 in. . . . .	1
28	104349	Washer - 3/8 in. . . . .	1
29	55716D	Clutch Assy . . . . .	1
30	51644B	. Spring - Clutch . . . . .	1
31	55523B	. Shoe - Clutch (Set of 4) . . . . .	1
32	28766	. Spring - Starter pawl . . . . .	1
33	55717	. Rotor and Pawl Assy . . . . .	1
34	28917	. . Pin - Starter pawl . . . . .	2
35	28765	. . Pawl - Starter . . . . .	2
36		. . Rotor Assy (Order Rotor and Pawl Assy #55717) . . . . .	1
37	103879	Key - Woodruff . . . . .	1
	55931	Clutch Drum Assy (For 3.6:1 transmission) . . . . .	1
	51859	Clutch Drum Assy (For 3:1 and 2:1 transmissions) . . . . .	1
38	55930	. Bearing - Clutch drum . . . . .	1
39		. Drum - Clutch (Order Clutch Drum Assy #55931 or #51859) . . . . .	1

FIGURE 5. POWER HEAD ASSEMBLY

Index No.	Part Number	Nomenclature	Units Per Assy
1	101965	Screw - Fil hd 10-24 x 7/8 in. lg . . . . .	2
2	100003	Washer . . . . .	2
3	51253	Retainer - Coil . . . . .	2
4	51251	Lamination Assy - Coil . . . . .	1
	55949A	Coil and Terminal Assy . . . . .	1
5	101883	Wire Assy - Ground . . . . .	1

This list is continued on page 11

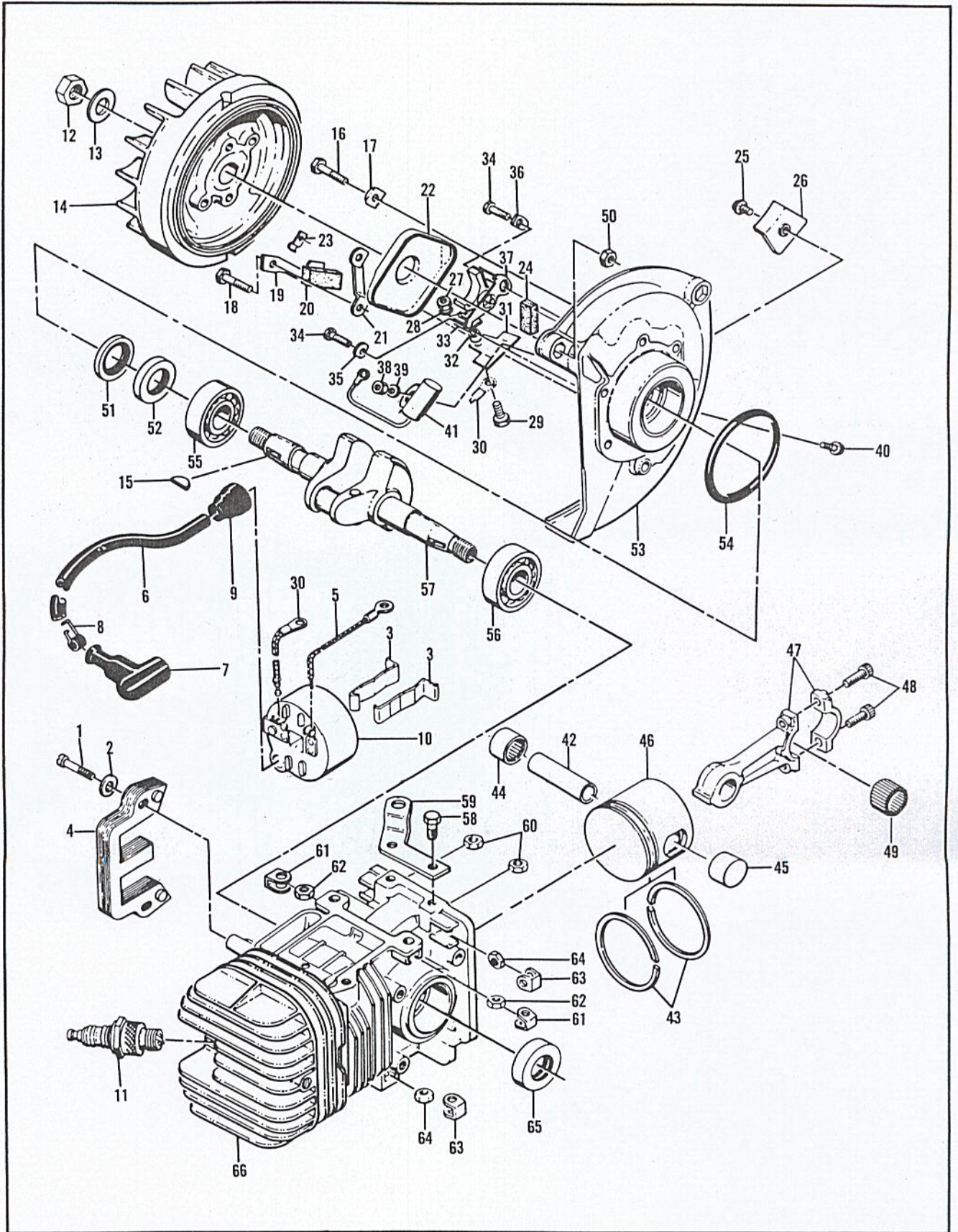


Figure 5. Powerhead Assembly

FIGURE 5. POWER HEAD ASSEMBLY (CONT)

Index No.	Part Number	Nomenclature	Units Per Assy
6	52547	. Wire Assy - Spark plug . . . . .	1
7	55060	. . Boot - Spark plug . . . . .	1
8	55061	. . Connector - Spark plug wire . . . . .	1
9	55617	. Nipple - Spark plug . . . . .	1
10		. Coil Assy (Order Coil and Terminal Assy #55949A) . . . . .	1
11		Plug - Spark 14 mm . . . . .	1
12	101179	Nut - Hex 7/16 . . . . .	1
13	101270	Washer - Special . . . . .	1
14	57825	Flywheel Assy . . . . .	1
15	103879	Key - Woodruff . . . . .	1
16	102763	Screw - Hex hd 10-24 x 3/4 in. lg . . . . .	2
17	36388	Lockplate . . . . .	1
18	102763	Screw - Hex hd 10-24 x 3/4 in. lg . . . . .	4
19	57815	Strap - Seal . . . . .	1
20	50664	Seal - Breaker box drain . . . . .	1
21	55977	Clip - Breaker box cover . . . . .	2
22	55766B	Cover - Breaker box . . . . .	1
23	104230	Speednut . . . . .	1
24	54184	Wiper - Felt . . . . .	1
25	110055	Screw - 8-32 x 3/8 in. lg (SEMS) . . . . .	1
26	57829	Clamp - Ignition wire . . . . .	1
27	104551	Nut - Hex 8-32 . . . . .	1
28	104553	Lockwasher . . . . .	1
29	103748	Screw - Hex hd 8-32 x 1/2 in. lg . . . . .	1
30	57766	Wire Assy - Primary . . . . .	1
31	55782	Insulator - Primary wire Assy . . . . .	1
32	57769	Insulator - Ignition screw . . . . .	1
33	57770A	Insulator - Breaker spring . . . . .	1
34	104733	Screw - 8-32 x 1/2 in. lg (SEMS) . . . . .	2
35	57767A	Lockplate . . . . .	1
36	55778C	Washer - Breaker retainer . . . . .	1
37	57765A	Breaker Assy . . . . .	1
38	100955	Nut - Hex 8-32 . . . . .	1
39	100080	Washer - Plain #8 . . . . .	1
40	104733	Screw - 8-32 x 1/2 in. lg (SEMS) . . . . .	1
41	50074	Condenser . . . . .	1
42	58132	Pin - Piston . . . . .	1
	58878	Piston Assy (Also see Oversize Assys - Page 19) . . . . .	1
43	58881	. Ring Set - Piston . . . . .	1
44	101206	. Bearing - Needle . . . . .	1
45	104378	. Bearing - Needle (closed end) . . . . .	1
46		. Piston (Order Piston Assy #58878) . . . . .	1
47	47782A	Connecting Rod Assy . . . . .	1
48	60210	. Screw - Socket hd 10-32 x 5/8 in. lg . . . . .	2
49	102742	. Roller - Needle . . . . .	24
	57827	Crankcase Cover Assy . . . . .	1
50	101326	. Nut - Hex 10-24 . . . . .	2
51	57897	. Seal - Oil . . . . .	1
52	57898	. Seal - Oil . . . . .	1
53		. Cover - Crankcase (Order Crankcase Cover Assy #57827) . . . . .	1
54	104523	"O" Ring . . . . .	1
55	100824	Bearing - Ball . . . . .	1
56	104490	Bearing - Ball . . . . .	1
57	58124	Crankshaft . . . . .	1
58	102762	Screw - Hex hd 10-24 x 1/2 in. lg . . . . .	2
59	53271	Bracket - Fuel tank . . . . .	1
60	101326	Nut - Hex 10-24 . . . . .	2
	59564	Cylinder Assy - Crankcase . . . . .	1
61	28053	. Retainer - Nut . . . . .	2
62	101326	. Nut - Hex 10-24 . . . . .	2
63	18556A	. Retainer - Nut . . . . .	6
64	101143	. Nut - Hex 1/4-20 . . . . .	6
65	104486	. Seal - Oil . . . . .	1
66		. Cylinder - Crankcase (Order Cylinder-Crankcase Assy #59564) . . . . .	1

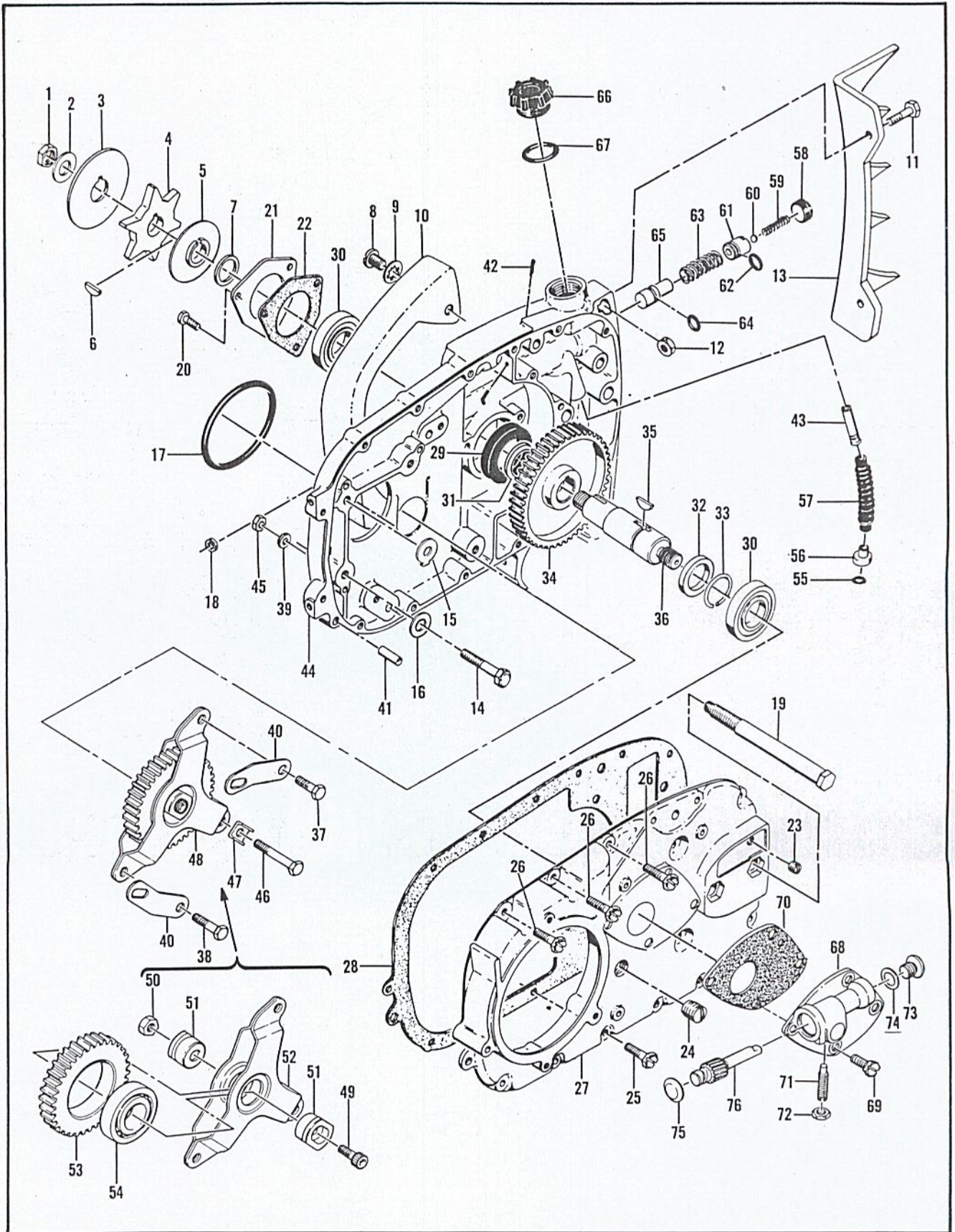


Figure 6. Transmission Assembly

FIGURE 6. TRANSMISSION ASSEMBLY

Index No.	Part Number	Nomenclature	Units Per Assy	Usable On Code
CODE				
"A" indicates parts used on 3:1 Transmission P/N 60464				
"B" indicates parts used on 2:1 Transmission P/N 60633				
"C" indicates parts used on 3.6:1 Transmission P/N 60463				
1	60972	Nut - Special . . . . .	1	A, B, C
2	100593	Washer - 7/16 in. . . . .	1	A, B, C
3	51627	Plate - Chain guide . . . . .	1	A, B, C
4	36791A	Sprocket - 7 tooth, 9/16 in. pitch . . . . .	1	A, B, C
	36790A	Sprocket - 6 tooth, 9/16 in. pitch . . . . .	alternate	A, B, C
	36644A	Sprocket - 7 tooth, 1/2 in. pitch . . . . .	alternate	A, B, C
	36020B	Sprocket - 6 tooth, 1/2 in. pitch . . . . .	alternate	A, B, C
	52069A	Sprocket - 7 tooth, 0.404 in. pitch . . . . .	alternate	A, B, C
5	36019A	Shroud - Sprocket . . . . .	1	A, B, C
6	100256	Key - Woodruff #6 . . . . .	1	A, B, C
7	51726	Spacer - Sprocket . . . . .	1	A, B
	55737	Spacer - Sprocket . . . . .	1	C
8	102415	Screw - Pan hd 10-24 x 3/8 in. lg . . . . .	2	A, B, C
9	101194	Lockwasher . . . . .	2	A, B, C
10	51634B	Guard - Chain . . . . .	1	A, B, C
11	100882	Screw - Hex hd 1/4-20 x 3/4 in. lg . . . . .	2	A, B, C
12	101143	Nut - Hex 1/4-20 . . . . .	2	A, B, C
13	51654	Spike . . . . .	1	A, B, C
14	102128	Screw - Hex hd 1/4-20 x 1-1/4 in. lg . . . . .	3	A, B, C
15	36306	Lockplate . . . . .	3	A, B, C
16	100004	Washer - Plain 1/4 in. . . . .	2	A, B, C
17	104535	"O" Ring . . . . .	1	A, B, C
18	55449A	Washer - Oiler rod felt . . . . .	1	A, B, C
	60464	Transmission Assy 3:1 . . . . .	1	A
	60633	Transmission Assy 2:1 . . . . .	1	B
	60463	Transmission Assy 3.6:1 . . . . .	1	C
19	51631A	. Bolt - Bar mounting . . . . .	2	A, B, C
20	104835	. Screw - Pan hd 10-24 x 1/2 in. lg . . . . .	4	A, B, C
21	60408	. Retainer - Bearing . . . . .	1	A, B, C
22	60409	. Gasket - Retainer . . . . .	1	A, B, C
23	101864	. Plug - Pipe 1/16 - 27 . . . . .	1	A, B, C
24	104218	. Plug - Pipe 3/8 - 18 . . . . .	1	A, B, C
25	103464	. Screw - Hex hd 10-24 x 3/4 in. lg (SEMS) . . . . .	11	A, B, C
26	103947	. Screw - Hex hd 10-24 x 1 in. lg (SEMS) . . . . .	3	A, B, C
27	58779	. Cover - Gearcase . . . . .	1	A, B, C
28	55913B	. Gasket - Gearcase cover . . . . .	1	A, B, C
29	104298	. Seal - Oil . . . . .	1	A, B, C
30	101039	. Bearing . . . . .	2	A, B, C
31	55715	. Spacer - Gear . . . . .	1	A, B, C
32	60407	. Spacer - Gear . . . . .	1	A, B, C
	60419	. Shaft and Sprocket Gear Assy . . . . .	1	A
	60420	. Shaft and Sprocket Gear Assy . . . . .	1	B
	60421	. Shaft and Sprocket Gear Assy . . . . .	1	C
33	104451	. Ring - Retaining . . . . .	1	A, B, C
34	55925	. Gear - Sprocket drive . . . . .	1	A
	57999	. Gear - Sprocket drive . . . . .	1	B
	55915	. Gear - Sprocket drive . . . . .	1	C
35	55953	. Key - Sprocket gear . . . . .	1	A, B, C
36	60470	. Shaft - Sprocket . . . . .	1	A, B, C
	60461	. Gearcase Assy . . . . .	1	A, B, C
37	102504	. Screw - Hex hd 1/4-28 x 3/4 in. lg . . . . .	1	A, B, C
38	102901	. Screw - Hex hd 1/4-28 x 1 in. lg . . . . .	1	A, B, C
39	100004	. Washer - Plain 1/4 in. . . . .	2	A, B, C
40	60186	. Strap - Idler yoke . . . . .	2	A, B, C
41	100993	. Pin - Dowel . . . . .	1	A, B, C
42	100010	. Pin - Cotter . . . . .	1	A, B, C

This list is continued on page 15

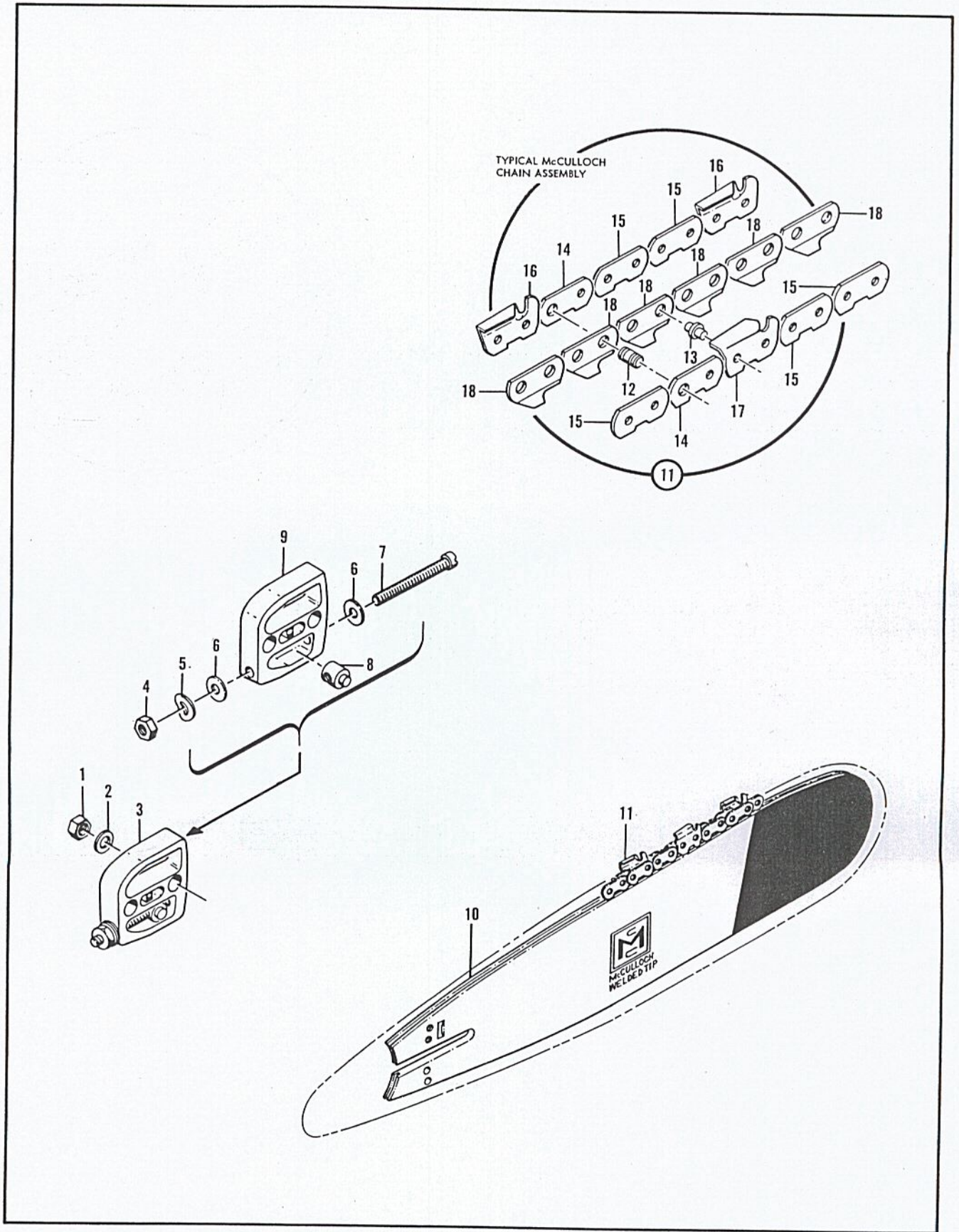


Figure 7. Lockplate Adjusting Assembly, Bar and Chain

FIGURE 6. TRANSMISSION ASSEMBLY (CONT)

Index No.	Part Number	Nomenclature	Units Per Assy	Usable On Code
43	60389	Valve Assy - Check	1	A, B, C
44		Gearcase (Order Gearcase Assy #60461)	1	A, B, C
45	100640	Nut - Hex 1/4-28	2	A, B, C
46	104351	Screw - Hex hd 1/4-28 x 1-13/32 in. lg.	1	A, B, C
47	55539	Lockplate - Yoke	1	A, B, C
48	55928A	Gear and Yoke Assy	1	A, B, C
	55722	Gear and Yoke Assy	1	A
	55917A	Gear and Yoke Assy	1	B
49	100201	Screw - Socket hd 1/4-28 x 1/2 in. lg.	1	C
50	100640	Locknut - Hex 1/4-28	1	A, B, C
51	57493	Hub - Bearing	1	A, B, C
52	53842	Yoke Assy	1	A, B
	53820	Yoke Assy	1	A
	53841	Yoke Assy	1	B
53	53264	Gear - Idler	1	C
	55728	Gear - Idler	1	A
	55924	Gear - Idler	1	B
54	100824	Bearing - Ball	1	C
	51505	Weight Assy	1	A, B, C
55	51506	Screen - Pickup	1	A, B, C
56	51509	Weight - Pickup	1	A, B, C
57	28007	Hose - Pickup	1	A, B, C
58	51755	Plug - Oiler valve	1	A, B, C
59	51944	Spring	1	A, B, C
60	100549	Ball - Steel 0.188 in. dia	1	A, B, C
	60622A	Body Assy - Oiler	1	A, B, C
61	57721B	Body - Oiler	1	A, B, C
62	101056	"O" Ring	1	A, B, C
63	19236	Spring - Oiler	1	A, B, C
	51472	Piston Assy - Oiler	1	A, B, C
64	101056	"O" Ring	1	A, B, C
65	36126	Piston - Oiler	1	A, B, C
66	57129A	Cap - Filler	1	A, B, C
67	101148	"O" Ring	1	A, B, C
68	60914	Pump and Gasket Assy - Oiler (3:1)	1	A, B, C
	60466	Pump and Gasket Assy - Oiler (2:1)	1	A
	60915	Pump and Gasket Assy - Oiler (3.6:1)	1	B
69	110172	Screw - Special	1	C
70	60409	Gasket - Oiler pump	4	A, B, C
71	60962	Screw - Special	1	A, B, C
72	101075	Nut - Hex 10-32	1	A, B, C
73	60959	Plug - Special	1	A, B, C
74	60963	Shim - 0.005 in.	1	A, B, C
	60964	Shim - 0.015 in.	as required	A, B, C
	60965	Shim - 0.025 in.	as required	A, B, C
75	104791	Plug - Expansion 5/8 in.	as required	A, B, C
76	60960	Plunger - Oiler pump (3:1)	1	A, B, C
	60958	Plunger - Oiler pump (2:1)	1	A
	60961	Plunger - Oiler pump (3.6:1)	1	B
			1	C

FIGURE 7. LOCK PLATE ADJUSTING ASSEMBLY, BAR AND CHAIN

Index No.	Part Number	Nomenclature	Units Per Assy
1	103729	Nut - Hex 3/8-24	
2	100393	Washer - 3/8 in.	2
3	52211D	Lockplate Adjusting Assy.	2
4	100640	Nut - Hex 1/4-28	1
5	102813	Washer - Spring	1
			1

This list is continued on page 17

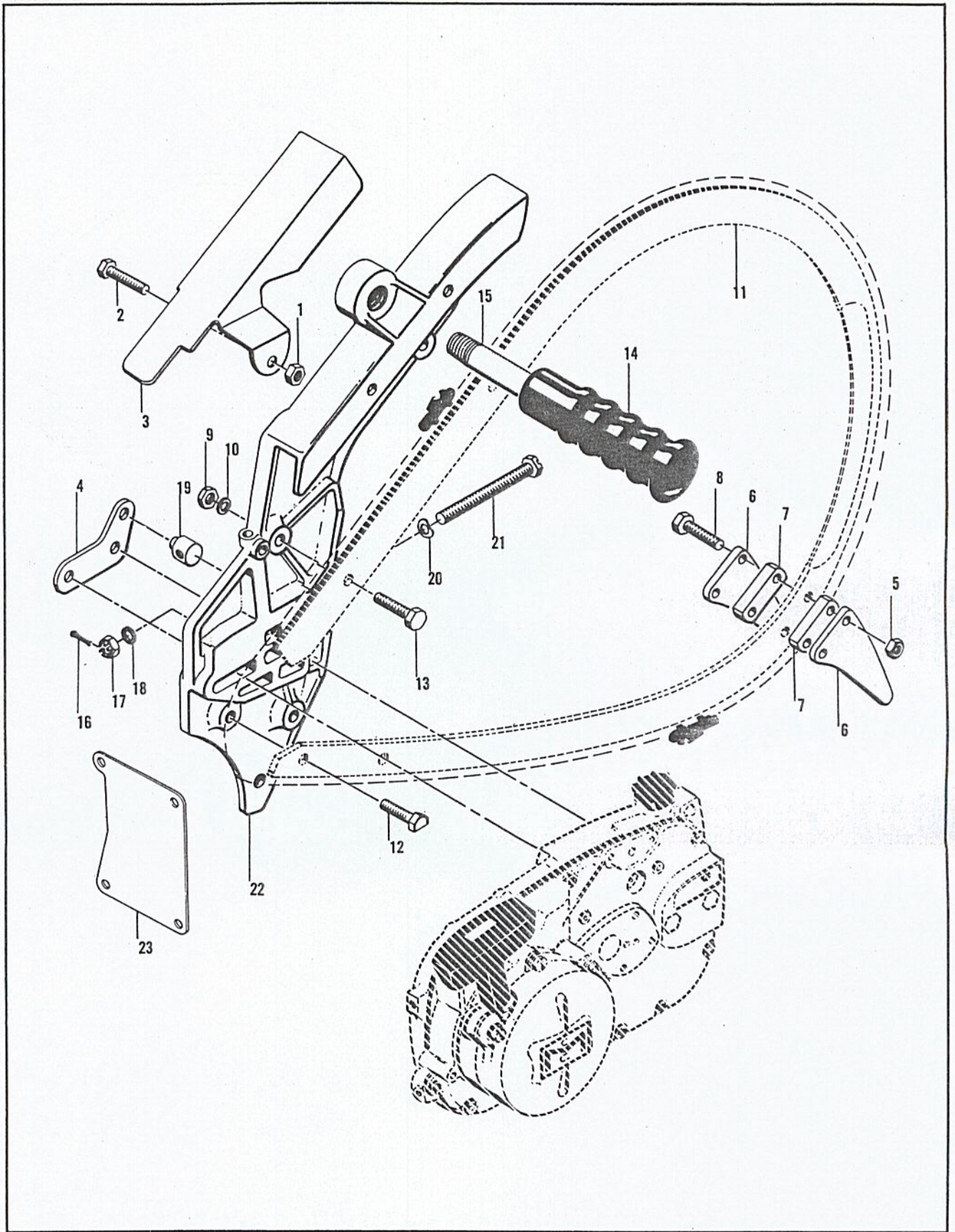


Figure 8. Plunge Bow Saw Assembly



FIGURE 7. LOCK PLATE ADJUSTING ASSEMBLY, BAR AND CHAIN (CONT)

Index No.	Part Number	Nomenclature	Units Per Assy
6	102843	Washer - Plain 1/4 in. . . . .	2
7	103919	Screw - Fil hd 1/4-28 x 2-1/2 in. lg . . . . .	1
8	52207C	Nut - Adjusting . . . . .	1
9	52206B	Lockplate . . . . .	1
10	51405A	Bar - 18 in. . . . .	1
	51407A	Bar - 24 in. (alternate) . . . . .	1
	51409A	Bar - 30 in. (alternate) . . . . .	1
11		Typical McCulloch Chain Assy . . . . .	1
12		Master Pin . . . . .	
13		Shoulder Rivet . . . . .	
14		Master Link . . . . .	
15		Side Link . . . . .	
16		Cutter - L. H. . . . .	
17		Cutter - R. H. . . . .	
18		Center Link . . . . .	

FIGURE 8. PLUNGE BOW SAW ASSEMBLY.

Index No.	Part Number	Nomenclature	Units Per Assy
	55152	Plunge Bow Saw Assy (less track) . . . . .	1
1	*101143	Nut - Hex 1/4-20 . . . . .	1
2	*102128	Screw - Hex hd 1/4-20 x 1-1/4 in. lg . . . . .	1
3	*57494A	Guard - Chain (bow saw) . . . . .	1
4	*51674	Plate - Adjusting . . . . .	1
5	*101143	Nut - Hex 1/4-20 . . . . .	2
6	*28256	Spike . . . . .	2
7	*28259A	Spacer . . . . .	2
8	*102130	Bolt - Hex hd 1/4-20 x 1-1/2 in. lg . . . . .	2
9	*101143	Nut - Hex 1/4-20 . . . . .	4
10	*100004	Washer - Plain 1/4 in. . . . .	4
11		Track (available through dealers) . . . . .	
12	*51955	Bolt - Special 1/4-20 x 1 in. lg . . . . .	1
13	*101982	Bolt - Hex hd 1/4-20 x 1 in. lg . . . . .	3
	*19502	Auxiliary Handle Assy . . . . .	1
14	*18207A	Grip - Handle . . . . .	1
15	*19476	Auxiliary Handle . . . . .	1
16	101495	Pin - Cotter 0.09 in. dia x 1/2 in. lg . . . . .	1
17	102022	Nut - Castle 5/16 - 24 . . . . .	1
18	100007	Washer - Plain 5/16 in. . . . .	1
19	19708	Nut - Adjusting . . . . .	1
20	24260	Spring - Thrust . . . . .	1
21	102193	Screw - Adjusting . . . . .	1
22	51672	Body Assy . . . . .	1
23	57530	Plate - Crankcase cover . . . . .	1

\*Contained in loose parts package.

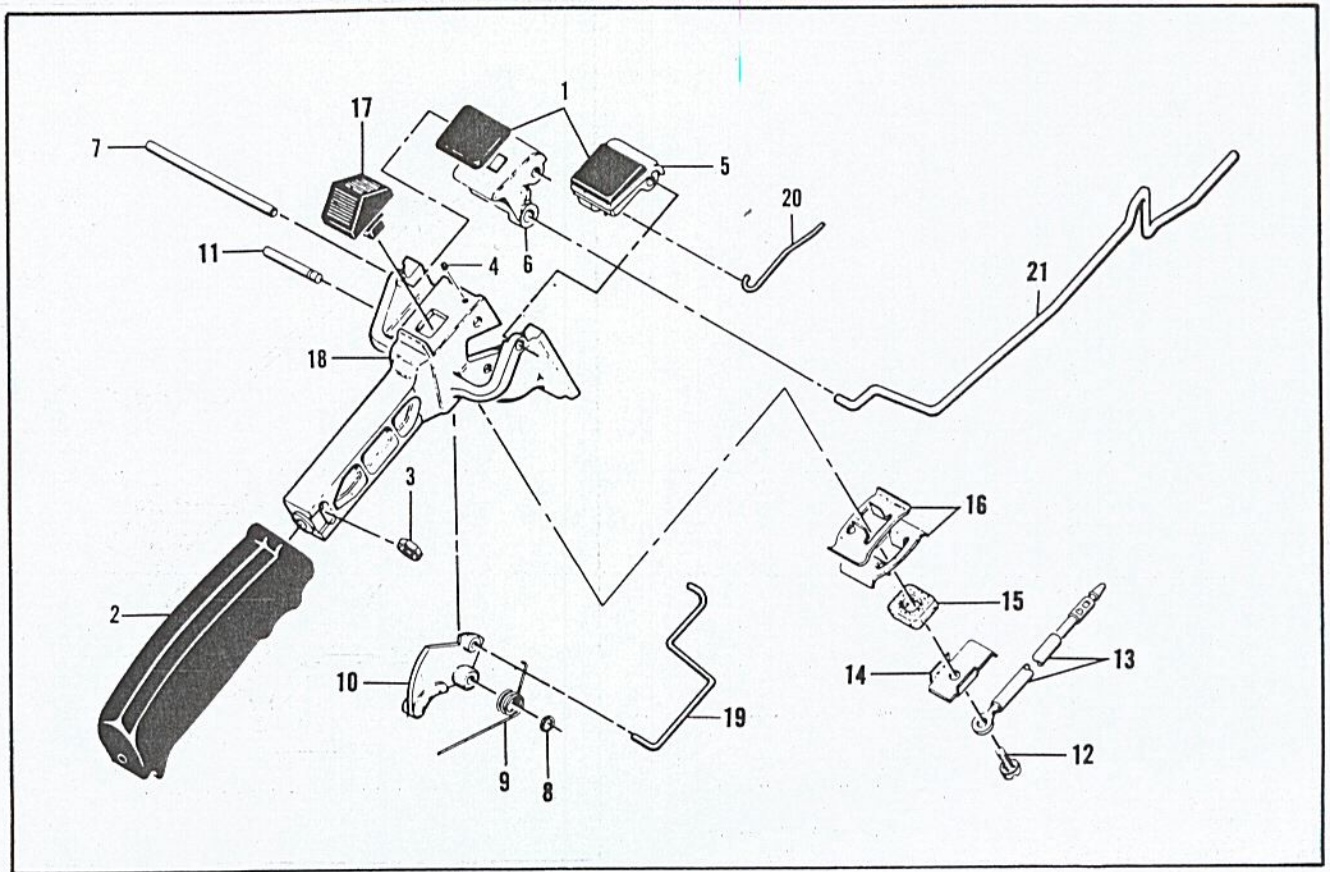


FIGURE 9. HANDLE AND CONTROL ASSEMBLY

Figure 9. Handle and Control Assembly

Index No.	Part Number	Nomenclature	Units Per Assy
1	55670	Grommet . . . . .	2
	53245	Handle and Control Assy . . . . .	1
2	55624A	. Grip - Handle . . . . .	1
3	101326	. Nut - Hex 10-24 . . . . .	1
4	104484	. Screw - Set 8-32 x 1/4 in. lg . . . . .	1
5	55968A	. Button - Primer control . . . . .	1
6	55969A	. Button - Oiler control . . . . .	1
7	51344A	. Shaft - Primer and oiler buttons . . . . .	1
8	104501	. Retainer - Trigger pin . . . . .	1
9	55674	. Spring - Trigger return . . . . .	1
10	55616	. Trigger . . . . .	1
11	50507	. Pin - Trigger . . . . .	1
12	110055	. Screw - Fil hd 8-32 x 3/8 in. lg (SEMS) . . . . .	1
13	51492A	. Wire Assy - Primary . . . . .	1
14	51279	. Contact - Switch . . . . .	1
15	51555	. Insulator - Switch . . . . .	1
16	51554A	. Detent - Switch . . . . .	2
17	57718	. Button - Switch . . . . .	1
18	55986	. Handle . . . . .	1
19	53590	Pushrod - Throttle . . . . .	1
20	53583A	Pushrod - Primer . . . . .	1
21	57719	Pushrod - Oiler . . . . .	1

## TOOLS AND ACCESSORIES

**MODEL  
840**

Part Number	Nomenclature
*51445A	Wrench and Screwdriver Combination
*60447	Owner's Manual of Operating Instructions
*56625A	Chain Maintenance Manual
14168A	Wrench - Spark plug
18413A	Gauge - Feeler
56224	Chain Breaker - Rivet Spinner
56250	Depth Gauge - 0.025 - 0.040
56251	Depth Gauge - 0.045 - 0.060
102449	McCulloch Yellow Paint (12 oz spray bomb type can)
56409	McCulloch Oil (1 quart can)
56404	McCulloch Oil (12 oz can)

\*Items furnished with each saw.

## OVERSIZE PISTON ASSEMBLY

Part Number	Nomenclature
58882	Piston Assy - 0.010 in. oversize
58885	. Ring Set - 0.010 in. oversize
101206	. Bearing - Needle
104378	. Bearing - Needle (closed end)
58886	Piston Assy - 0.020 in. oversize
58889	. Ring Set - 0.020 in. oversize
101206	. Bearing - Needle
104378	. Bearing - Needle (closed end)
58890	Piston Assy - 0.030 in. oversize
58893	. Ring Set - 0.030 in. oversize
101206	. Bearing - Needle
104378	. Bearing - Needle (closed end)