

# ILLUSTRATED PARTS LIST

## MINI-MAC 6<sup>®</sup> CHAIN SAW

The policy of McCulloch Corporation is one of continual improvement in design, manufacturing and engineering advancement wherever possible to assure still finer two-cycle power tools. Hence, specifications, equipment, colors, design and manufacturer's suggested list prices are subject to change without notice and McCulloch Corporation reserves the right to make such changes without prior notification or obligation to backfit or supply backfit components for units previously shipped from the factory.

### MODELS:

#### AUTOMATIC

600080

600080 U,H,B

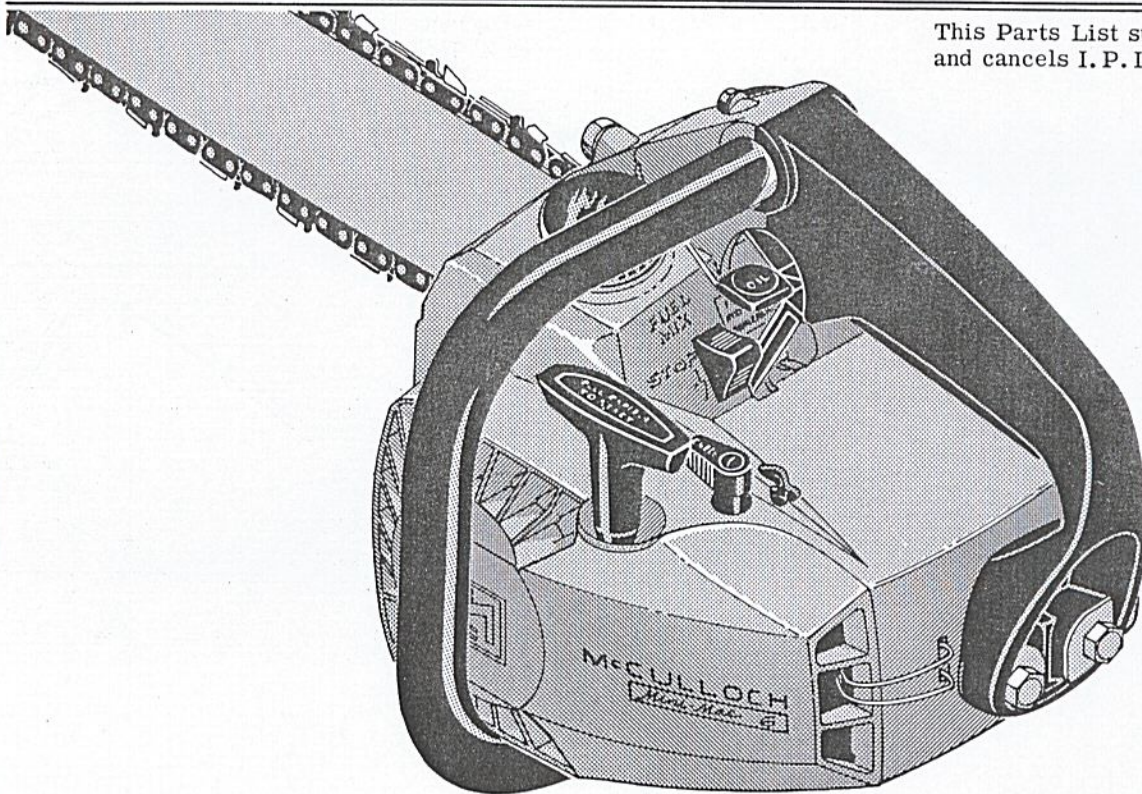
#### MANUAL

600081

600081 U,P

**APRIL 1972**

This Parts List supersedes  
and cancels I. P. L. P/N 85509



### — CONTENTS —

	Page
Figure 1. General .....	2
Figure 2. Powerhead .....	4
Figure 3. Carburetor .....	6



**McCULLOCH CORPORATION**



COPYRIGHT U.S.A. 1972  
McCULLOCH CORPORATION

P/N 86497



Mini-Mac 6

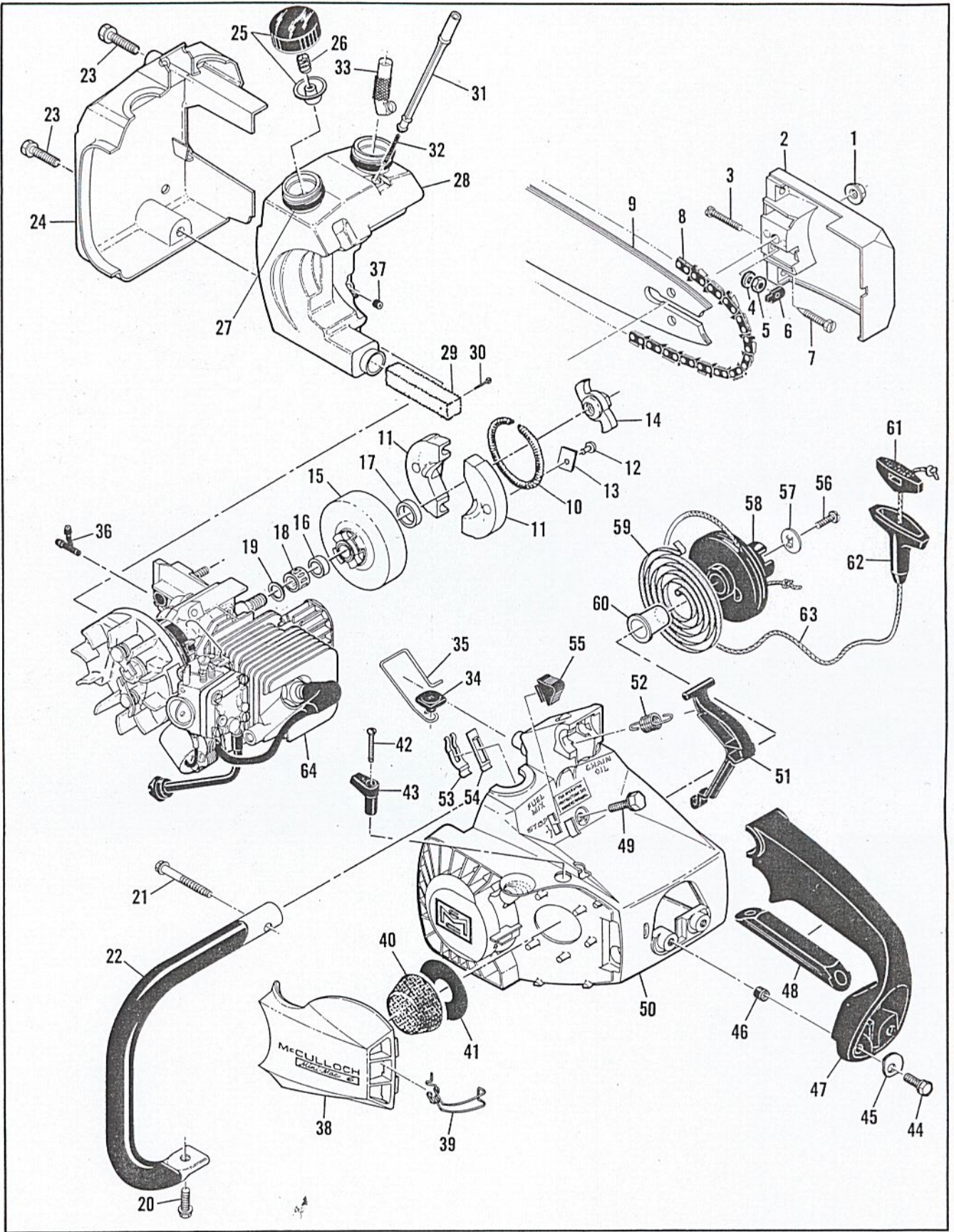


Figure 1. General



FIGURE 1. GENERAL

Item No.	Part Number	Description	Units Per Assy
1	110676	Nut - Hex 1/4-28	1
2	85456	Guard Assy - Clutch	1
3	110660	. Screw - Pan hd 8-32 x 1-1/8	1
4	110525	. Washer - Wavey	1
5	100955	. Nut - Hex 8-32	1
6	84929	. Nut - Bar adjusting	1
7 ①	84715	Spike	2
8 ②	67747N	Chain Assy - 14 in. bar	1
③	67746N	Chain Assy - 12 in. bar	1
9 ②	68301	Bar - 14 in.	1
③	66924	Bar - 12 in.	1
④	83906	Clutch Assy	1
⑤	85450	Clutch Assy	1
10	69358	. Spring - Clutch	1
11	85202	. Shoe Assy - Clutch	2
12	110709	. . Rivet	2
13	85064	. . Plate	2
14 ④	83907	. Spider	1
⑤	85449	. Spider	1
15 ⑤	85504	Kit - Sprocket & Drum	1
16 ④	85144	. Spacer - Bearing	1
17 ⑤	85319	. Spacer - Drum	1
18	67650	Bearing - Sprocket	1
19	67303	Washer - Sprocket	1
20	110640	Screw - Hex hd 12-24 x 5/8 s/t	1
21	110686	Screw - Hex hd 13-16 x 2	1
22	84791	Frame & Grip Assy	1
23	110639	Screw - Hex hd 12-24 x 1	2
24	84792	Cover - Fuel tank	1
25	83905	Cap - Fuel & Oil	2
26	85079	. Spring - Cap	2
27	110732	"O" Ring	2
28	-86441	Tank Assy - Fuel & Oil	1
29	84956	. Pickup - Fuel	1
30	85057	. . Pin - Pickup	1
31	83900	. Piston - Manual oiler	1

Item No.	Part Number	Description	Units Per Assy
32	83946	. Spring - Piston	1
33	85557	. Body - Oiler	1
34 ⑥	84794	Button - Oiler rod	1
35	84611	Rod - Manual oiler	1
36 ⑥	84653	Connector - Oil pump	1
37 ⑥	-86438	Valve - Pump check	1
38	84709	Cover Assy - Air cleaner	1
39	83882	. Retainer - Cover	1
40	85127	Filter - Air	1
41	84918	Washer - Air seal	1
42	110672	Screw - Oval hd 4-40 x 1	1
43	83870	Knob - Choke	1
44	110640	Screw - Hex hd 12-24 x 5/8 s/t	2
45	84520	Washer - Handle	2
46	84519	Sleeve - Handle	2
47	83852	Handle	1
48	64872	Grip - Handle	1
49	110640	Screw - Hex hd 12-24 x 5/8 s/t	3
50	83872	Fan Housing	1
51	83878	Trigger	1
52	83940	Spring - Trigger	1
53	83935	Contact - Switch	1
54	83936	Protector - Switch	1
55	83934	Button - Switch	1
56	105248	Screw - Rd hd 8-32 x 5/8 (SEMS)	1
57	84467	Washer - Special	1
58	83876	Drum - Starter	1
59	83078	Spring - Rewind	1
60	83874	Bushing - Starter	1
61	68810	Insert - Handle	1
62	67158	Handle - Starter	1
63	83203	Rope - Starter	1
64		Powerhead Assy (See Figure 2)	

Model	Oiler	S/N Prefix	S/N's
① 600081P	Manual	All	All (Std. Equip.)
② 600080	Automatic	All	All
② 600080U, H, B	Automatic	13-	All
③ 600081	Manual	All	All
③ 600081U, H	Manual	12-	All
④ 600080	Automatic	A10-, 11-	10001 to 33969
④ 600081	Manual	A10-, 10-	10001 to 41435
⑤ 600080	Automatic	A10-, 11-	33969 & Up
		A11-, 12-	All
⑤ 600081	Manual	A10-, 10-	41435 & Up
		A11-, 11-	All
⑤ 600081U, P	Manual	12-	All
⑤ 600080U, H, B	Automatic	13-	All
⑥ 600080	Automatic	All	All (Std. Equip.)
⑥ 600080U, H, B	Automatic	All	All (Std. Equip.)

Part numbers which have changed since the previous printing of the illustrated parts list covering these saws, are indicated by a dash (-) preceding the new part number.



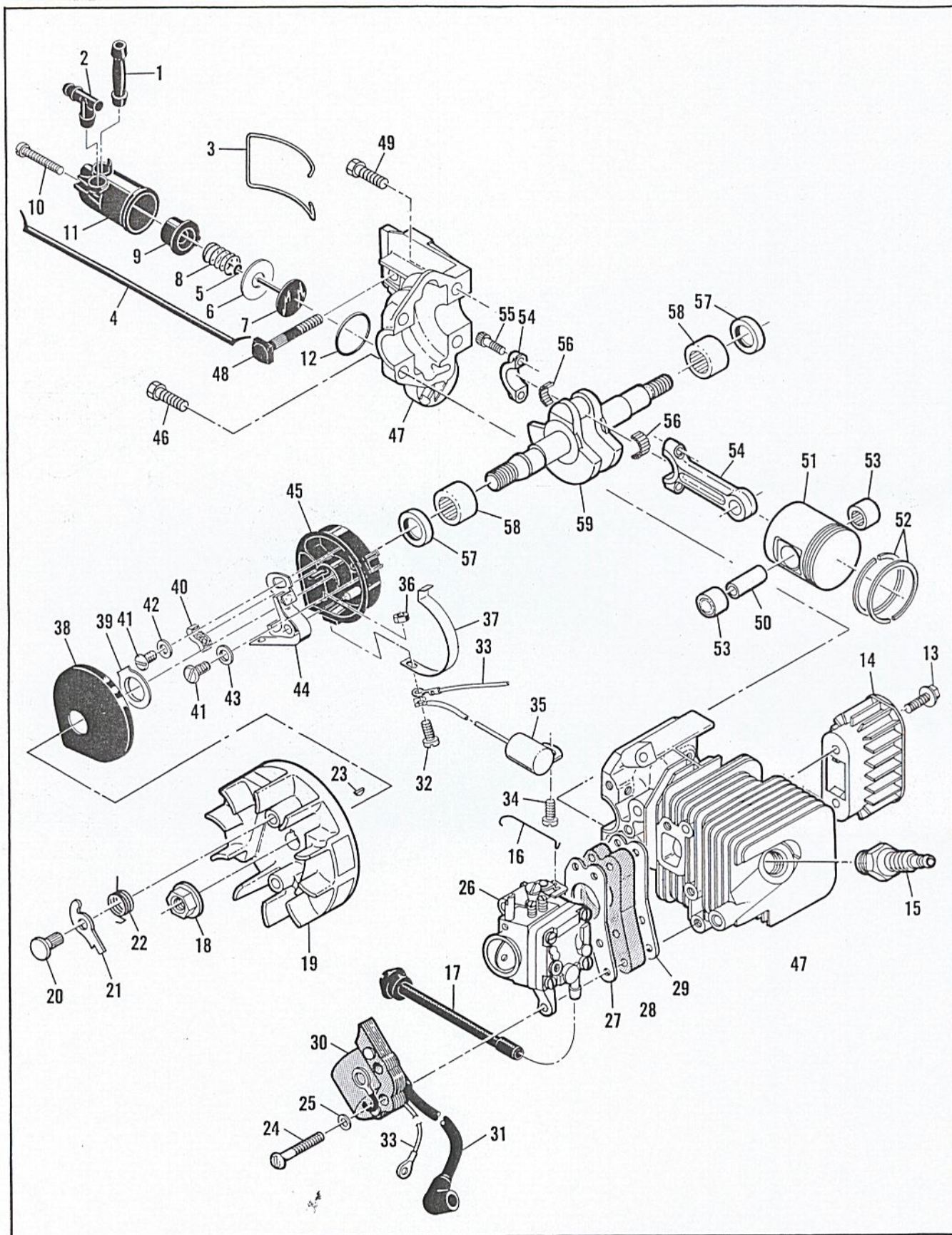


Figure 2. Powerhead.



FIGURE 2. POWERHEAD ASSEMBLY

Item No.	Part Number	Description	Units Per Assy
1	83898	Connector - Outlet	1
2	84613	Connector - Pump	1
3	83896	Bail - Mounting	1
4	83886	Pump Assy - Pulse	1
5	-105603	. "O" Ring	1
6	-85769	. Ring - Pump piston	1
7	-85768	. Piston Assy - Pump	1
8	83891	. Spring - Pump	1
9	83890	. Sleeve - Pump	1
10	110651	. Screw - Adjustment	1
11	83887	. Body Assy - Pump	1
12	110653	"O" Ring	1
13	110682	Screw - Hex hd 10-24 x 5/8	2
14	83947	Stack - Exhaust	1
15	63097	Spark Plug - AC CS 45T	1
16	83879	Rod - Throttle	1
17	83904	Hose - Fuel	1
18	110678	Nut - Hex 3/8-24	1
19	69806	Flywheel & Pawl Assy	1
20	-69102	. Pin - Pawl	2
21	69103	. Pawl - Starter	2
22	67814	. Spring - Pawl	2
23	103879	Key - Woodruff	1
24	110586	Screw - Pan hd 8-32 x 1-3/4	3
25	100080	Washer - #8	3
26		Carburetor Assy (See Figure 3)	
27	68197	Gasket - Carburetor	1
28	68195	Insulator - Carburetor	1
29	68196	Gasket - Insulator	1
30	-84957	Coil & Lamination Assy	1
31	-50120	. Wire Assy - Spark plug	1

Item No.	Part Number	Description	Units Per Assy
32	110364	Screw - Pan hd 6-32 x 5/8	1
33	69344	Wire Assy - Coil	1
34	110041	Screw - Pan hd 8-32 x 1/2 s/t	1
35	85358	Condenser	1
36	100035	Nut - Hex 6-32	1
37	84502	Connector - Stop switch	1
38	67841	Cover - Breaker box	1
39	69323	Seal - Breaker box	1
40	54184	Wiper - Cam	1
41	110041	Screw - Pan hd 8-32 x 1/2 s/t	2
42	69322	Washer - Special	1
43	105976	Washer - #8	1
44	84514	Breaker Assy	1
45	84505	Box - Breaker	1
46	110639	Screw - Hex hd 12-24 x 1	2
47	84984	Crankcase Assy	1
48	83856	. Bolt - Bar mounting	1
49	110639	. Screw - Hex hd 12-24 x 1	2
50	66867	Pin - Piston	1
51	84981	Piston Assy	1
52	-87164	. Ring Set - Piston	1
53	110538	. Bearing - Needle	2
54	68097	Connecting Rod Assy	1
55	66853	. Screw - Special	2
56	68095	. Roller - Needle (set of 20)	1
57	83859	Seal - Oil	2
58	66854	Bearing - Needle	2
59	-85598	Crankshaft	1

<u>Model</u>	<u>Oiler</u>	<u>S/N Prefix</u>	<u>S/N's</u>
② 600080	Automatic	All	All
② 600080U, H, B,	Automatic	13-	All



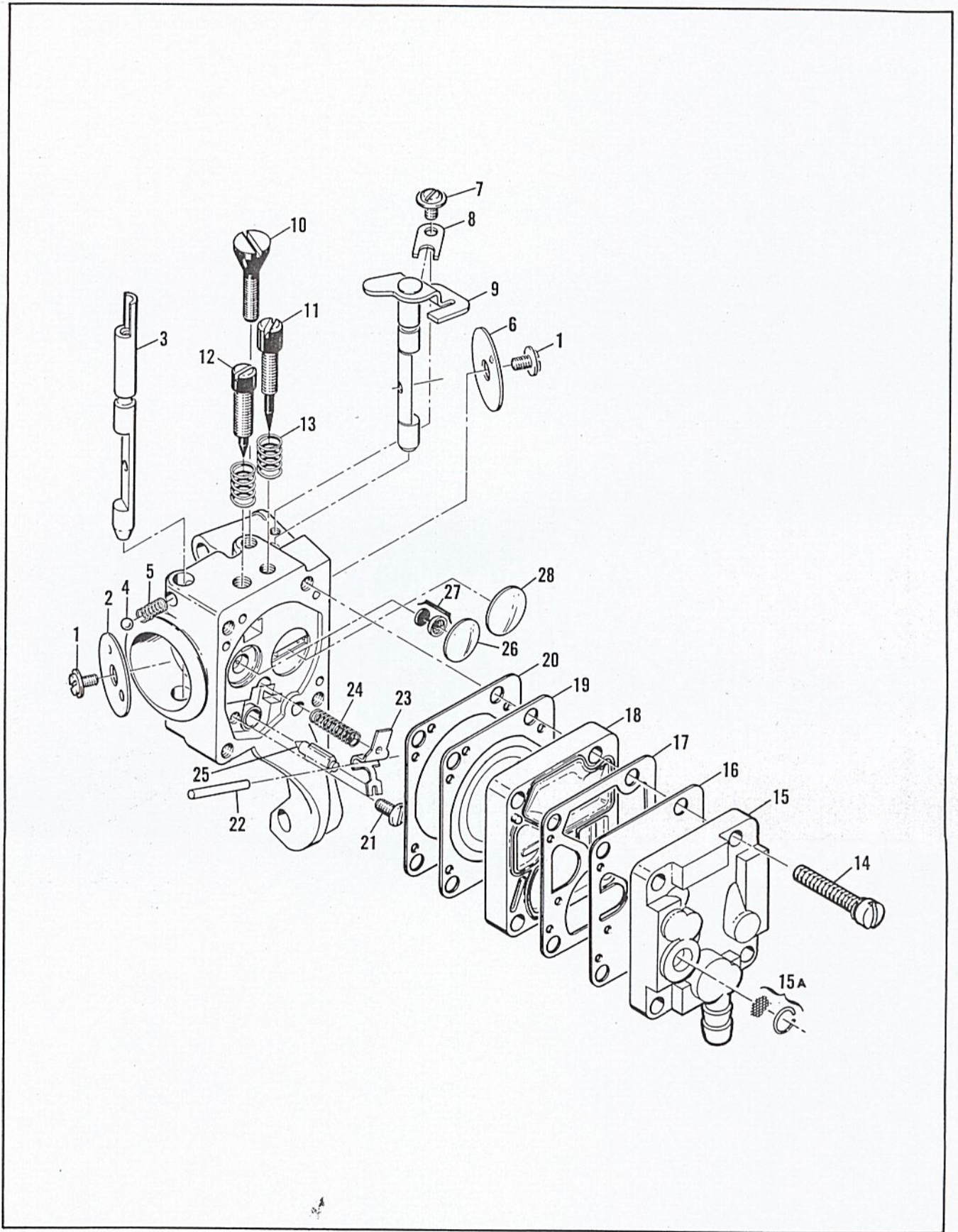


Figure 3. Carburetor



## FIGURE 3. CARBURETOR ASSEMBLY

Index No.	Part Number	Description	Units Per Assy
	83869	Carburetor Assy	1
1	* 83755	. Screw - Plate	2
2	68556	. Plate - Choke	1
3	85033	. Shaft - Choke	1
4	* 100302	. Ball - Choke friction	1
5	* 67504	. Spring - Choke friction	1
6	68553	. Plate - Throttle	1
7	70798	. Screw - Clip	1
8	68554	. Clip - Throttle shaft	1
9	85032	. Shaft Assy - Throttle	1
10	* 68566	. Screw - Idle speed	1
11	* 68568	. Needle - Idle	1
12	* 68569	. Needle - High speed	1
13	* 67502	. Spring - Needle	2
14	* 68564	. Screw Assy - Body	4
15	85031	. Cover Assy - Pump	1
15A	85629	. . Kit - Vent screen	1

Index No.	Part Number	Description	Units Per Assy
16	* 68563	. Diaphragm - Fuel pump	
17	* 85035	. Gasket - Pump diaphragm	1
18	85030	. Body - Fuel pump	1
19	* 85036	. Diaphragm - Metering	1
20	* 85034	. Gasket - Diaphragm	1
21	* 67500	. Screw - Lever pin	1
22	* 67508	. Pin - Lever	1
23	* 83756	. Lever - Inlet	1
24	* 68567	. Spring - Lever	1
25	* 83753	. Needle - Inlet	1
26	* 68559	. Plug - Welsh 7/16	1
27	* 83758	. Kit - Check valve	1
28	* 68560	. Plug - Welsh 1/2	1
	85041	Repair Kit	

\* Included in Repair Kit, P/N 85041

## ACCESSORIES

Part Number	Description
84992	Muffler - Reed
85933	Kit - Spark arrester screen (Reed muffler)
68768	Kit - Muffler
69162	Screen - Spark arrester (PM 6 muffler)
85062	Kit - Piston tool
83687	Guide - Timing
68648	Screen
84338	Rope - 100 ft reel

Part Number	Description
83924	Owner's Manual
-85924	Kit - Spark arrester
-85687	Wrench - Screwdriver
-84715	Spike
*-84959	Carrying Case
*-84904	Kit - Tool
*-84911	. Handle - File
*-68648	. Wrench
*-83463	Kit - Gas & Go
**-83234	Wrench

\*Furnished with Models 600080H and 600081H

\*\*Furnished with Model 600080B

## SERVICE SPECIFICATIONS

Spark Plug Gap -----	0.025 in.
Lamination Gap -----	0.010 to 0.015 in.
Breaker Point Gap -----	0.018 in.
Carburetor Adjustment	
Idle Needle - Preliminary adjustment	3/4 turn open
	Adjust for smooth idle and acceleration.
Main Needle - Preliminary adjustment	3/4 turn open
	Adjust for maximum power under load.
Torque Values	
Flywheel Nut -----	240 to 300 inch-pounds
Clutch Nut -----	125 to 150 inch-pounds
Connecting Rod Screws -----	35 to 40 inch-pounds