

FIGURE 5. (CONT)

FIG. & INDEX NO.	PART NO.	DESCRIPTION							UNITS PER ASSY	USABLE ON CODE
		1	2	3	4	5	6	7		
5-51	19288	.							1	A
-52	19289	.							1	A
-53	100002	.							1	A
-54	19279	.							1	A
-55	100684	.							1	A
-56	101173	.							1	A
-57	100683	.							1	A
-58	19025B	.							1	A
-59	100590	.							1	A
-60	19416A	.							1	A
-61	100297	.							2	A
-62	100002	.							1	A
-63	101191	.							1	A
-64	19727B	.							1	A
-65	19520C	.							1	A
-66	101204	.							1	A
-67	100153	.							1	A
-68	19804	.							1	A
-69	100549	.							1	A
-70	19158	.							1	A
-71	19159	.							1	A
-72	101246	.							1	A
-73	19236	.							2	A
-74	19117	.							1	A
-75	100939	.							1	A
-76	100564	.							1	A
-77	101222	.							1	A
-78	19888	.							1	A
-79	19118	.							1	A
-80	19014	.							1	A
-81	19185	.							1	A
-82	28054	.							1	A

FIGURE 6. CRANKCASE AND BAR ADJUSTING LOCKPLATE.

FIG. & INDEX NO.	PART NO.	DESCRIPTION							UNITS PER ASSY	USABLE ON CODE
		1	2	3	4	5	6	7		
6-1	101977	.							2	BCDE
-2	101143	.							2	BCDE
-3	19752	.							1	BCDE
-4	100682	.							3	BCDE
-5	100440	.							2	BCDE
-6	19682	.							1	BCDE
-7	100010	.							1	BCDE
-8	102022	.							1	BCDE
-9	24260	.							1	BCDE
-10	102193	.							1	BCDE
-11	100007	.							1	BCDE
-12	19708	.							1	BCDE
-13	19681	.							1	BCDE
-14	102101	.							3	BCDE

Code: "B" indicates parts used on Model 4-30 engines.
 "C" indicates parts used on Model 4-30A engines.
 "D" indicates parts used on Model 47 engines.
 "E" indicates parts used on Model 73 engines.

3-25, 4-30 SERIES ENGINES

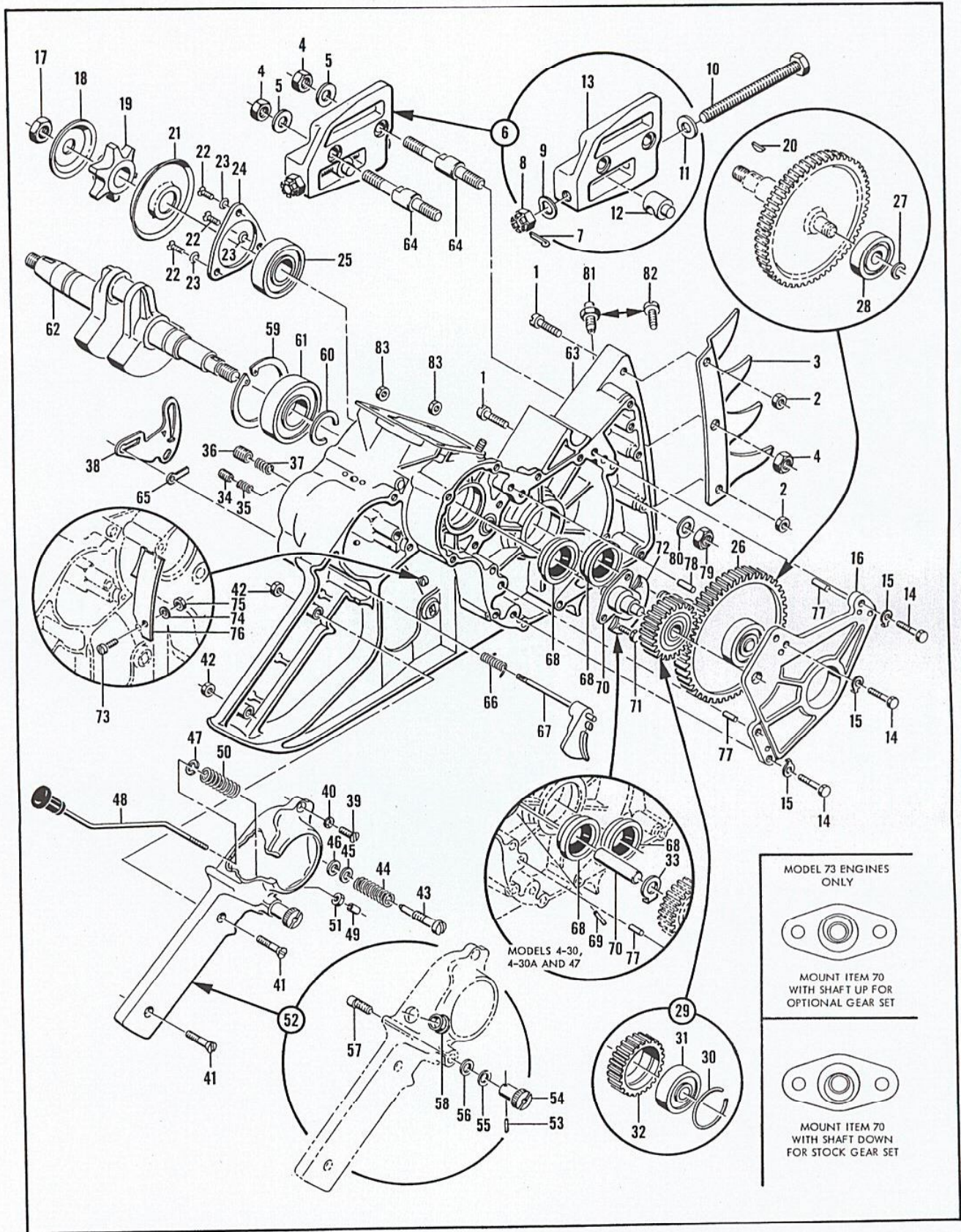


Figure 6. Crankcase and Bar Adjusting Lockplate

FIGURE 6. (CONT)

FIG. & INDEX NO.	PART NO.	DESCRIPTION							UNITS PER ASSY	USABLE ON CODE
		1	2	3	4	5	6	7		
6-15	28052	Lockplate							3	BCDE
-16	28003	Plate - Shaft support							1	B
	28003A	Plate - Shaft support							1	CD
	28720	Plate - Shaft support							1	E
-17	101179	Nut - Hex 7/16-20							1	BCDE
-18	19733A	Shroud - Sprocket							1	BCDE
-19		Sprocket (Order for size of chain to be used)							1	BCDE
-20	100256	Key							1	BCDE
-21	19278	Shroud - Sprocket							1	BCDE
-22	100852	Screw - Flat hd 10-24 x 1/2 in. lg							3	BCDE
-23	102395	Lockwasher - Countersunk							3	BCDE
-24	28040	Plate - Sprocket bearing retainer							1	BCDE
-25	102084	Bearing							1	BCDE
-26	28008	Gear Assembly - Sprocket shaft							1	BCD
	28575	Shaft Assembly - Sprocket							1	E
-27	101794	. Ring - Retaining							1	BCDE
-28	101376	. Bearing - Ball							1	BCDE
-29	28006A	Gear Assembly - Idler							1	BCD
	28781	Gear Assembly - Idler							1	E
-30	102701	. Ring - Retainer							1	BCD
	28033	. Ring - Retainer							1	E
-31	102702	. Bearing							1	BCD
	102083	. Bearing							1	E
-32	28012A	. Gear - Idler							1	BCD
	28780	. Gear - Idler							1	E
-33	28034	Thrust Washer							1	BCD
-34	28327	Sleeve - Venturi small							1	BCDE
-35	19845	Spring							1	BCDE
-36	19844	Sleeve - Venturi							1	B
	28326	Sleeve - Venturi large							1	CDE
-37	19846	Spring							1	BCDE
-38	28087A	Throttle Gate							1	B
	47205A	Throttle Gate							1	CDE
-39	101072	Screw - Oval hd 10-24 x 3/4 in. lg							1	BCDE
-40	102395	Lockwasher - Countersunk							1	BCDE
-41	101060	Screw - Oval hd 10-24 x 1 in. lg							2	BCDE
-42	101191	Nut - Hex 10-24							2	BCDE
-43	*19413A	Screw - Idle							1	B
	*28329	Screw - Idle							1	CDE
-44	*11361A	Spring							1	B
	*28331	Spring - Idle screw							1	CDE
-45	19412	Gasket - Idle screw							1	B
	28330	Gasket - Idle screw							1	CDE
-46	100002	Washer							1	B
	100004	Washer - Plain 1/4 in.							1	CD
	100005	Washer - Plain							1	E
-47	101426	Snap Ring							1	BCDE
-48	28013	Oil Pump Push Rod Assembly							1	BCDE
-49	24584	Sleeve - Push rod							1	BCDE
-50	24313	Spring - Push rod							1	BCDE
-51	100722	Nut - Stop 6-32							1	BCDE
-52	28014A	Cover Assembly - Air filter							1	BCDE
-53	100954	. Pin - Groove							1	BCDE
-54	19288	. Knob - Throttle stop							1	BCDE
-55	19289	. Washer - Spring							1	BCDE
-56	100003	. Washer - Plain No. 10							1	BCDE
-57	19279	. Shaft - Throttle stop							1	BCDE
-58	28057	. Sleeve - Push rod							1	BCDE
-59	100684	Snap Ring							1	BCDE
-60	101173	Retaining Ring							1	BCDE

*When Carburetor Assembly #47393 is used on these models, the idle screw and spring must be replaced by a 1/4-28 x 1 inch long Fillister head screw.

FIGURE 6. (CONT)

FIG. & INDEX NO.	PART NO.	1	2	3	4	5	6	7	UNITS PER ASSY	USABLE ON CODE
6-61	100683								1	BCDE
-62	19025B								1	BCD
	28820								1	E
-63	28023								1	B
	*28334A								1	CD
	**28708B								1	E
-64	19416A	.							2	BCDE
-65	28118	.							1	BCDE
-66	19185	.							1	BCDE
-67	28067	.							1	BCDE
-68	102939	.							2	BCDE
-69	102838	.							1	BCD
-70	28041A	.							1	BCD
	28717	.							1	E
-71	28667	.							2	E
-72	28662	.							2	E
-73	100297	.							1	BCDE
-74	100002	.							1	BCD
	100003	.							1	E
-75	101191	.							1	BCDE
-76	19727B	.							1	BCDE
-77	102110	.							2	BCDE
-78	102110	.							1	E
-79	100682	.							1	CDE
-80	100440	.							1	CDE
-81	28054	.							1	BCDE

Replacement Crankcase Assemblies #28925C, #28927 and #47403										
-63	28925C								1	BCD
	28927								1	E
	47403								1	E
-43 ***	28329	.							1	BCD
	103295	.							1	E
-44 ***	28331	.							1	BCD
-45	28330	.							1	BCD
-46	100005	.							1	BCD
-64	19416A	.							2	BCDE
-65	28118	.							1	BCDE
-66	19185	.							2	BCDE
-67	28067	.							1	BCDE
-68	102939	.							2	BCDE
-70	28717	.							1	BCDE
-71	28667	.							2	BCDE
-72	28662	.							2	BCD
	28662	.							1	E
-73	103469	.							1	BCDE
-74	100003	.							1	BCDE
-75	101191	.							1	BCDE
-76	19727B	.							1	BCDE
-77	102110	.							2	BCDE

*Also used on Model 4-30 engines as service replacement for a time.
 **Model 73 engines also used Crankcase Assembly #28927 as a service replacement.
 ***When Carburetor Assembly #47393 is used on these models, the idle screw and spring must be replaced by a 1/4-28 x 1 inch long Fillister head screw.

FIGURE 6. (CONT)

FIG. & INDEX NO.	PART NO.	DESCRIPTION							UNITS PER ASSY	USABLE ON CODE
		1	2	3	4	5	6	7		
6-78	102110	.							1	BCDE
-79	100682	.							2	BCDE
-80	100440	.							2	BCDE
-81	28054	.							1	BCDE
	100010	.							1	BCDE
-82	100590								1	BCDE
-83	101191								2	BCDE

FIGURE 7. FUEL TANK.

FIG. & INDEX NO.	PART NO.	DESCRIPTION							UNITS PER ASSY	USABLE ON CODE
		1	2	3	4	5	6	7		

Code: "A" indicates parts used on Model 3-25 engines.
 "B" indicates parts used on Model 4-30 engines.
 "C" indicates parts used on Model 4-30A engines.
 "D" indicates parts used on Model 47 engines.
 "E" indicates parts used on Model 73 engines.
 "All" indicates parts used on all five model engines.

7-	19084								1	A ¹
	28025								1	B ¹
	19955B								1	A ² D
	28328A								1	B ² C
	28571A								1	E
-1	19082C	.							1	A ¹ A ² D
	28064A	.							1	B ¹ B ² C
	28572A	.							1	E
-2	19083A	.							1	A ¹ A ² D
	28253A	.							1	B ¹ B ² C
	28704A	.							1	E
-3	101385	.							2	A ² B ¹ B ² CD
-4	100243	.							11	A ² B ¹ B ² CD
	100243	.							8	E
-5	101991	.							3	A ² D
	100243	.							3	B ¹ B ² C
-6	100240	.							14	A ² B ¹ B ² CD
	100240	.							8	E
-7	19685A	.							1	A ¹ A ² B ¹ B ² CD
	28530	.							1	E
-8	102270	.							1	A ¹ B ¹
	103081	.							1	E
-9	19661	.							1	A ¹
	28091	.							1	A ² B ¹ B ² CDE

Swivel Type Fuel Pickup Assemblies

-10	19787	.							1	A ¹ B ¹
-11	19139	.							1	A ¹ B ¹
-11	19133	.							1	A ¹ B ¹
-12	19132	.							1	A ¹ B ¹
-13	28803	.							1	All
-14	28806	.							2	All
-15	28804	.							1	All

3-25, 4-30 SERIES ENGINES

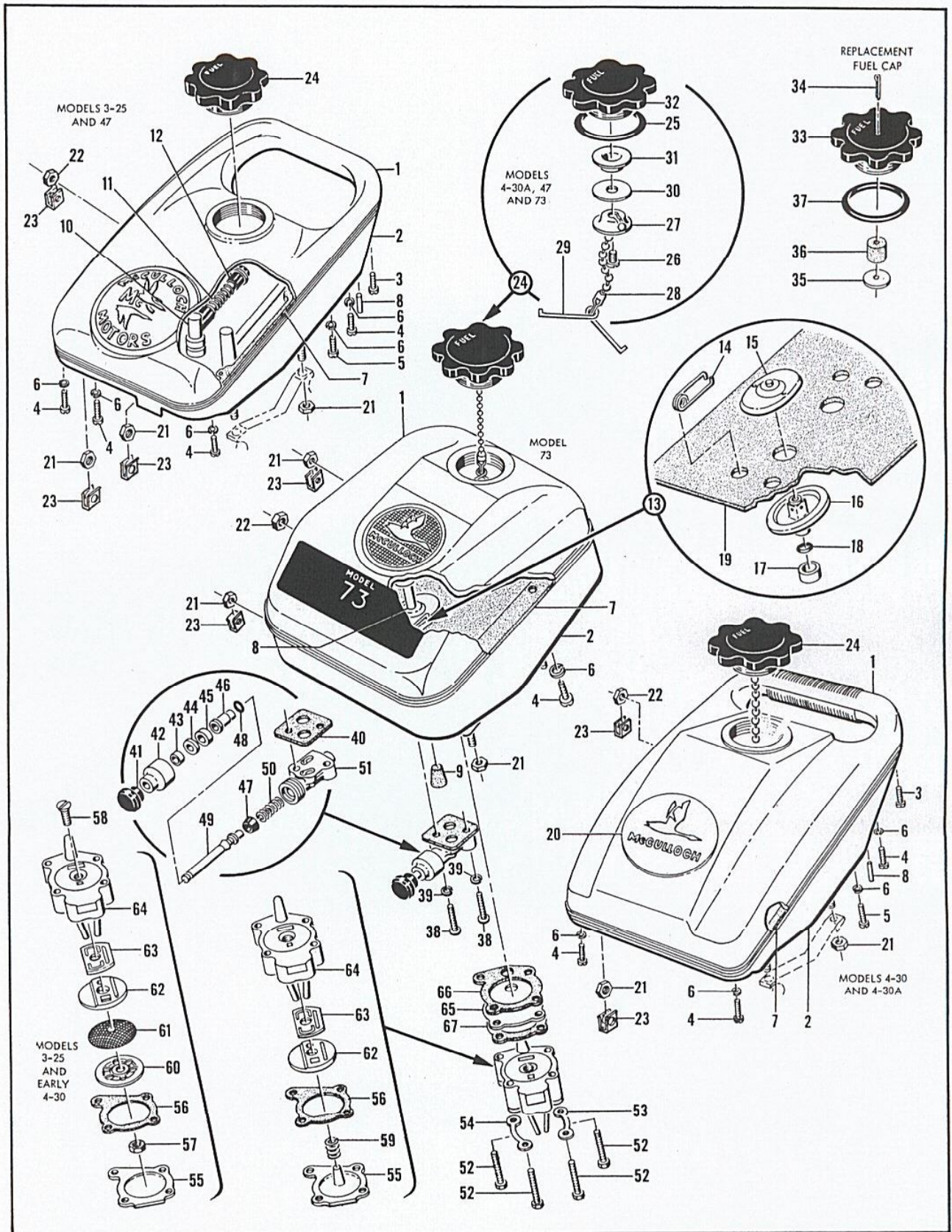


Figure 7. Fuel Tank

3-25, 4-30 SERIES ENGINES

FIGURE 7. (CONT)

FIG. & INDEX NO.	PART NO.	DESCRIPTION							UNITS PER ASSY	USABLE ON CODE
		1	2	3	4	5	6	7		
7-61	19256	.	Screen						1	AB ¹
-62	19645A	.	Retainer - Valve						1	All
-63	19257	.	Valve						1	All
-64	19261B	.	Body - Fuel pump						1	A
		.	Body - Fuel pump (Order #28650 Cover, #28574 Spring and #28652A Body)						1	B ¹
	28652A	.	Body - Fuel pump						1	B ² CDE
-65	19534A	.	Diaphragm Assembly						1	All
-66	19513	.	Gasket - Fuel pump						1	All
-67	19513	.	Gasket - Fuel pump						1	E

FIGURE 8. STARTER AND CLUTCH ASSEMBLY.

FIG. & INDEX NO.	PART NO.	DESCRIPTION							UNITS PER ASSY	USABLE ON CODE
		1	2	3	4	5	6	7		
Code: "A" indicates parts used on Model 3-25 engines.										
"B" indicates parts used on Model 4-30 engines.										
"C" indicates parts used on Model 4-30A engines.										
"D" indicates parts used on Model 47 engines.										
"E" indicates parts used on Model 73 engines.										
"All" indicates parts used on all five model engines.										
8-1	101975	.	Screw - Fil hd 10-24 x 2-1/2 in. lg						3	AB
	102320	.	Screw - Hex hd 10-24 x 2-1/2 in. lg						3	CDE
-2	101602	.	Screw - Fil hd 10-24 x 4 in. lg						1	A
	101970	.	Screw - Fil hd 10-24 x 2 in. lg						1	B
	103124	.	Screw - Hex hd 10-24 x 2 in. lg						1	CD
	103356	.	Screw - Hex hd 10-24 x 2-1/8 in. lg						1	E
-3	101194	.	Lockwasher - No. 10						1	All
-4	100002	.	Washer						3	ABCD
	100003	.	Washer - Plain No. 10						3	E
-5	101974	.	Screw - Fil hd 10-24 x 1-1/2 in. lg						1	All
-6	100002	.	Washer						1	AB
-7	101326	.	Nut - Hex 10-24						4	All
-8	19550	.	Starter Assembly (Not available - Order Starter Assembly #19550A)						1	ABCD
	19550A	.	Starter Assembly						1	E
-9	101989	.	Screw - Rd hd 10-24 x 1/2 in. lg						1	All
-10	101191	.	Nut - Hex 10-24						1	All
-11	19551A	.	Cover - Starter						1	All
-12	101795	.	Ring - Retaining						1	All
-13	24488	.	Washer						1	All
	19422	.	Rope Assembly						1	ABCD
-14	18840A	.	Plug - Starter handle						1	ABCD
-15	36395	.	Anchor - Long						1	ABCD
-16	101871	.	Washer - Plain						1	ABCD
-17	18849B	.	Handle						1	ABCD
-18	19110	.	Rope - Starter						1	ABCD
-19	19401	.	Anchor - Rope						1	ABCD
-20	24818	.	Cup - Starter handle						1	E
-21	24822	.	Handle - Starter						1	E
-22	28716	.	Rope - Starter assembly						1	E
-23	28842	.	Spring - Rewind						1	All
-24	19549	.	Spring - Starter clutch						1	All
-25	19568	.	Washer						1	All
-26	19545	.	Housing Assembly - Starter						1	All
-27	28741	.	Retainer - Starter spring						1	E
-28	19547	.	Shaft - Starter						1	All
-29	19548	.	Bushing - Starter housing						1	All

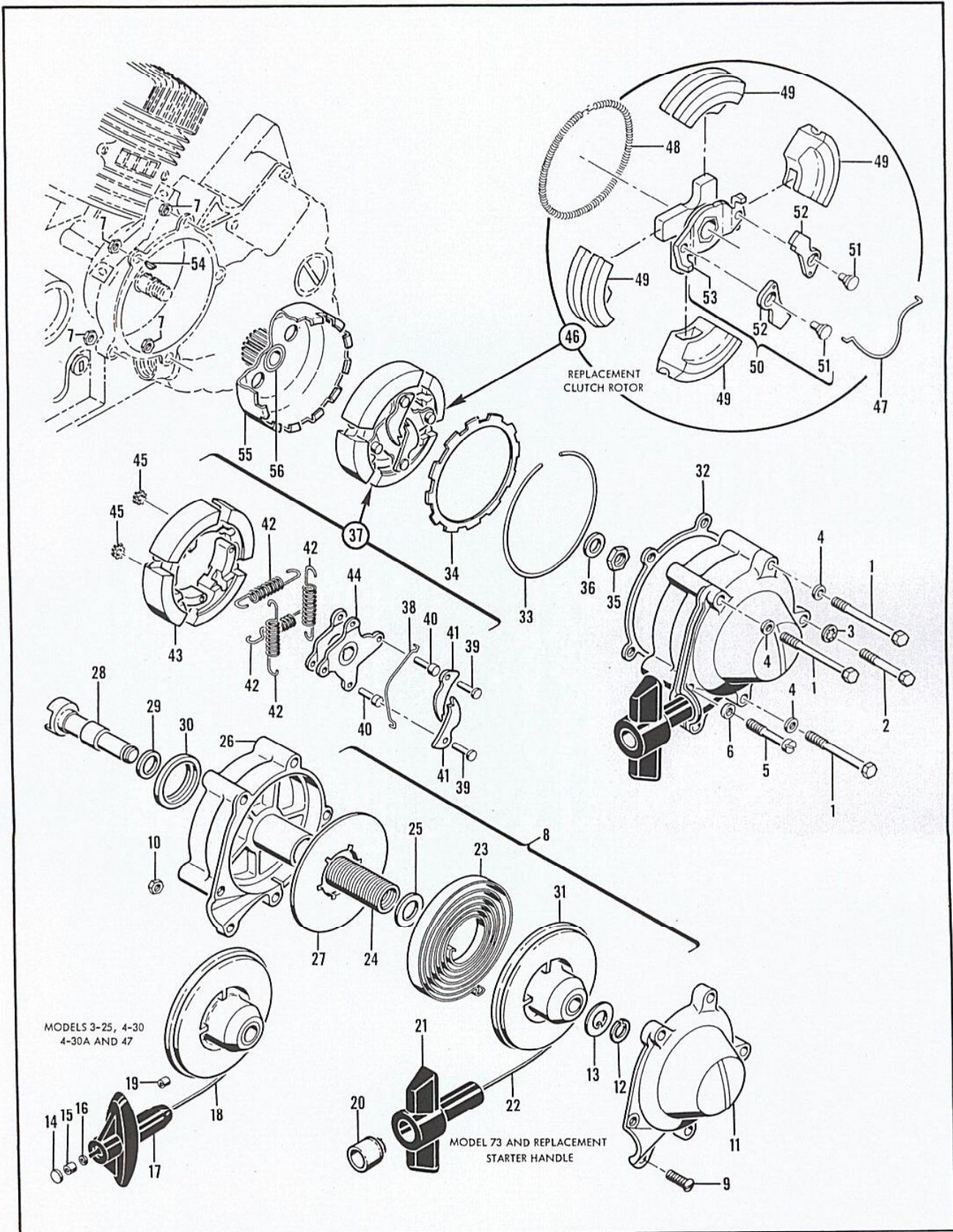


Figure 8. Starter and Clutch Assembly

3-25, 4-30 SERIES ENGINES

FIGURE 8. (CONT)

FIG. & INDEX NO.	PART NO.	DESCRIPTION							UNITS PER ASSY	USABLE ON CODE
		1	2	3	4	5	6	7		
8-30	101611	.	Seal - Oil						1	All
-31	19538	.	Drum - Starter						1	ABCD
	28715	.	Drum - Starter						1	E
-32	19180		Gasket - Starter						1	All
-33	19114		Ring - Clutch disc retaining 0.080 in. thick						As Req'd	All
	19114A		Ring - Clutch disc retaining 0.041 in. thick						As Req'd	All
	19114B		Ring - Clutch disc retaining 0.051 in. thick						As Req'd	All
	19114C		Ring - Clutch disc retaining 0.063 in. thick						As Req'd	All
	19114D		Ring - Clutch disc retaining 0.090 in. thick						As Req'd	All
	19114E		Ring - Clutch disc retaining 0.100 in. thick						As Req'd	All
	19114F		Ring - Clutch disc retaining 0.112 in. thick						As Req'd	All
	19114G		Ring - Clutch disc retaining 0.124 in. thick						As Req'd	All
	19114H		Ring - Clutch disc retaining 0.071 in. thick						As Req'd	All
-34	19050		Disc						1	A
	28113		Disc - Friction clutch						1	BCDE
-35	101179		Nut - Hex 7/16-20						1	All
-36	101093		Washer						1	All
-37	19074		Rotor Assembly - Clutch (Not available - Order Rotor Assembly #28918A)						1	All
-38	19755	.	Spring - Pawl						1	All
-39	19072A	.	Pin - Pivot						2	All
-40	19572A	.	Pin - Pivot						2	All
-41	19046	.	Pawl - Starter						2	All
-42	19124A	.	Spring - Clutch						4	All
-43	19068	.	Shoe - Clutch						4	All
-44	19075A	.	Spider Assembly - Clutch						1	All
-45	102692	.	Washer						4	All

Replacement Rotor Assembly #28918A

-46	28918A		Rotor Assembly						1	All
-47	28910	.	Spring - Clutch						1	All
-48	28766	.	Spring - Pawl						1	All
-49	28915A	.	Shoe - Clutch						4	All
-50	28919A	.	Pawl Assembly						1	All
-51	28917	.	Pin - Pivot						2	All
-52	28765	.	Pawl - Starter						2	All
-53		.	Clutch Assembly (Not available - Order Pawl Assembly #28918A)						1	All
-54	100199		Key - Woodruff No. 404						1	All
-55	28072A		Clutch Drum and Pinion Assembly						1	ABCD
	28531A		Clutch Drum Assembly						1	E
-56	19071	.	Bearing - Clutch						1	All

FIGURE 9. MODEL 4-30, 4-30A, 47 AND 73 CARBURETORS.

FIG. & INDEX NO.	PART NO.	DESCRIPTION							UNITS PER ASSY	USABLE ON CODE	
		1	2	3	4	5	6	7			
			Code: "B" indicates parts used on Model 4-30 engines.								
			"C" indicates parts used on Model 4-30A engines.								
			"D" indicates parts used on Model 47 engines.								
			"E" indicates parts used on Model 73 engines.								
9-1	102101		Screw - Hex hd 10-24 x 7/8 in. lg						1	BCDE	
-2	100002		Washer						1	BCD	
	100003		Washer - Plain No. 10						1	E	
-3	101191		Nut - Hex 10-24						1	BCDE	
-4	19239		Screw						1	BCDE	

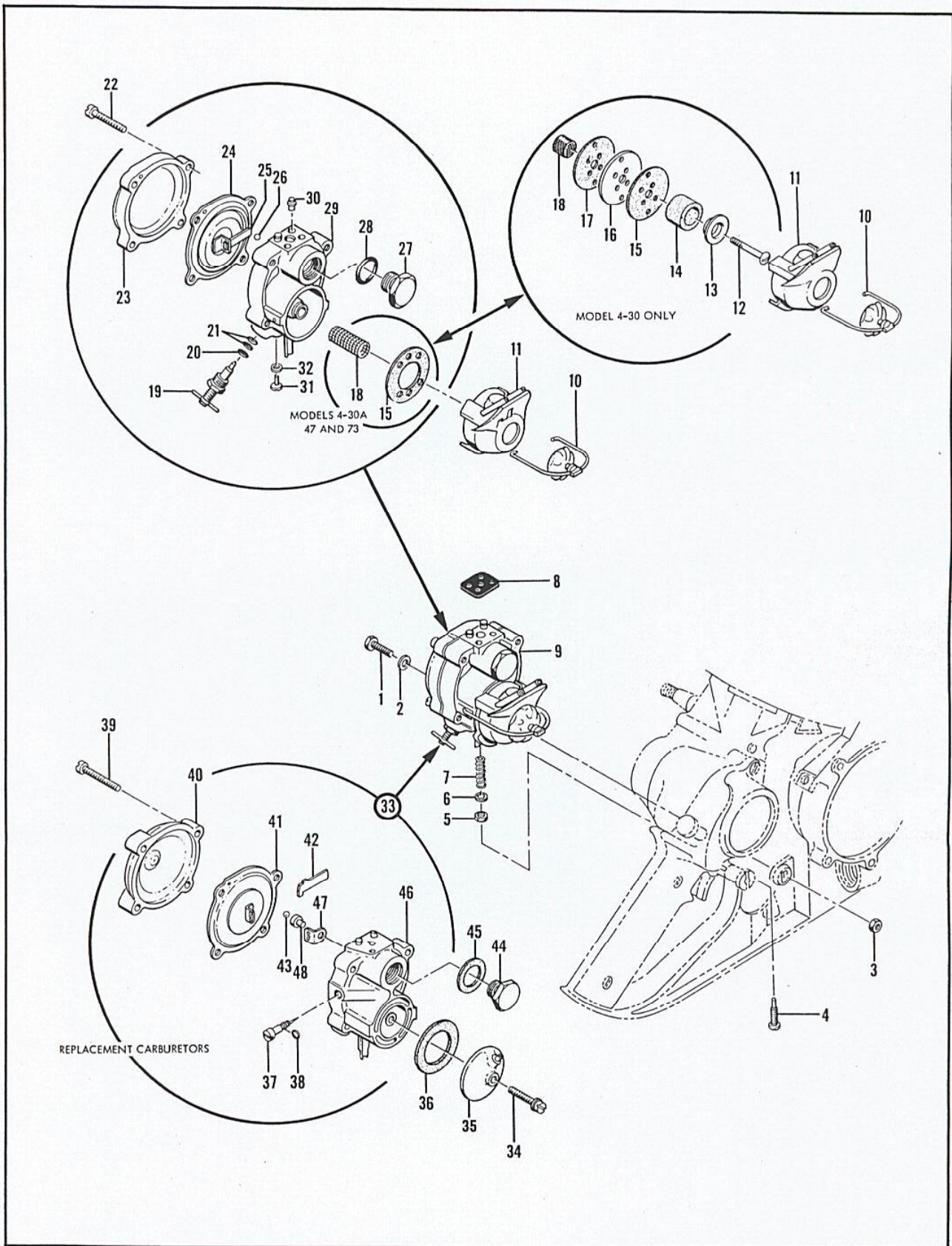


Figure 9. Model 4-30, 4-30A, 47 and 73 Carburetors

3-25, 4-30 SERIES ENGINES

FIGURE 9. (CONT)

FIG. & INDEX NO.	PART NO.	DESCRIPTION	UNITS PER ASSY	USABLE ON CODE
		1 2 3 4 5 6 7		
9-5	101075	Nut - Hex 10-32	1	BCDE
-6	100296	Lockwasher - No. 6	1	BCDE
-7	19183	Spring	1	BCDE
-8	19697	Gasket - Carburetor to crankcase	1	BCDE
-9	19662	Carburetor Assembly (Not available - Order Carburetor Assembly #47393)	1	B
	19662C	Carburetor Assembly (Not available - Order Carburetor Assembly #47393)	1	CDE
-10	19605	. Bail Assembly	1	BCDE
-11	28558A	. Bowl Assembly - Sediment	1	BCDE
-12	19840	. Screw - Fuel filter	1	B
-13	19602A	. Cap - Filter	1	B
-14	19603	. Filter - Fuel	1	B
-15	19842	. Gasket - Fuel filter bowl	1	B
	28539	. Gasket - Bowl	1	CDE
-16	19841	. Plate	1	B
-17	19842	. Gasket - Fuel filter bowl	1	B
-18	19598A	. Filter - Diaphragm	1	B
	28538	. Screen - Fuel	1	CDE
-19	19782A	. Needle Valve Assembly	1	BCDE
-20	101758	. Packing - "O" ring	1	B
	19899	. Packing - Needle	1	CDE
-21	19899	. Packing - Needle	2	CDE
-22	101965	. Screw - Fil hd 10-24 x 7/8 in. lg	4	BCDE
-23	19615A	. Cover - Carburetor	1	BCDE
-24	28696A	. Diaphragm and Gasket Assembly	1	BCDE
-25	19626	. Lever - Diaphragm	1	BCDE
-26	100302	. Ball	1	BCDE
-27	19670	. Body Assembly - Shut off valve	1	BCDE
-28	19673	. Washer - Body	1	BCDE
-29	19630A	. Body Assembly - Carburetor	1	B
	19630C	. Body Assembly - Carburetor	1	CDE
-30	19769	. Jet - Idler fuel	1	B
	28602	. Orifice Assembly - Carburetor	1	CDE
-31	103934	. Screw - Rd hd 6-32 x 1/4 in. lg	1	BCDE
-32	101838	. Gasket	1	BCDE

Replacement Carburetor Assemblies #47559A* and #47393

-33	47559A	Carburetor Assembly (Not available - Order Carburetor Assembly #47393)	1	BCDE
	47393	Carburetor Assembly	1	BCDE
-34	100258	. Screw - Rd hd 10-24 x 1 in. lg	1	BCDE
-35	28952	. Inlet Assembly	1	BCDE
-36	28954	. Seal Inlet Assembly	1	BCDE
-37	47557	. Screw - Idle adjustment (Includes "O" Ring #102155)	1	BCDE
-38	102155	. "O" Ring	1	BCDE
-39	101965	. Screw - Fil hd 10-24 x 7/8 in. lg	4	BCDE
-40	19615A	. Cover - Carburetor	1	BCDE
-41	28696A	. Diaphragm and Gasket Assembly	1	BCDE
-42	19626	. Lever - Diaphragm	1	BCDE
-43	100302	. Ball	1	BCDE
-44	19670	. Body Assembly - Shut off valve	1	BCDE
-45	19673	. Washer	1	BCDE
-46	28949A	. Body Assembly - Carburetor	1	BCDE
-47	19625	. Hinge - Diaphragm	1	BCDE
-48	28737	. Seat Assembly - Check valve	1	BCDE

*Carburetor Assembly #47559A was an earlier replacement carburetor on the listed engines. Parts are same for both replacement carburetors.

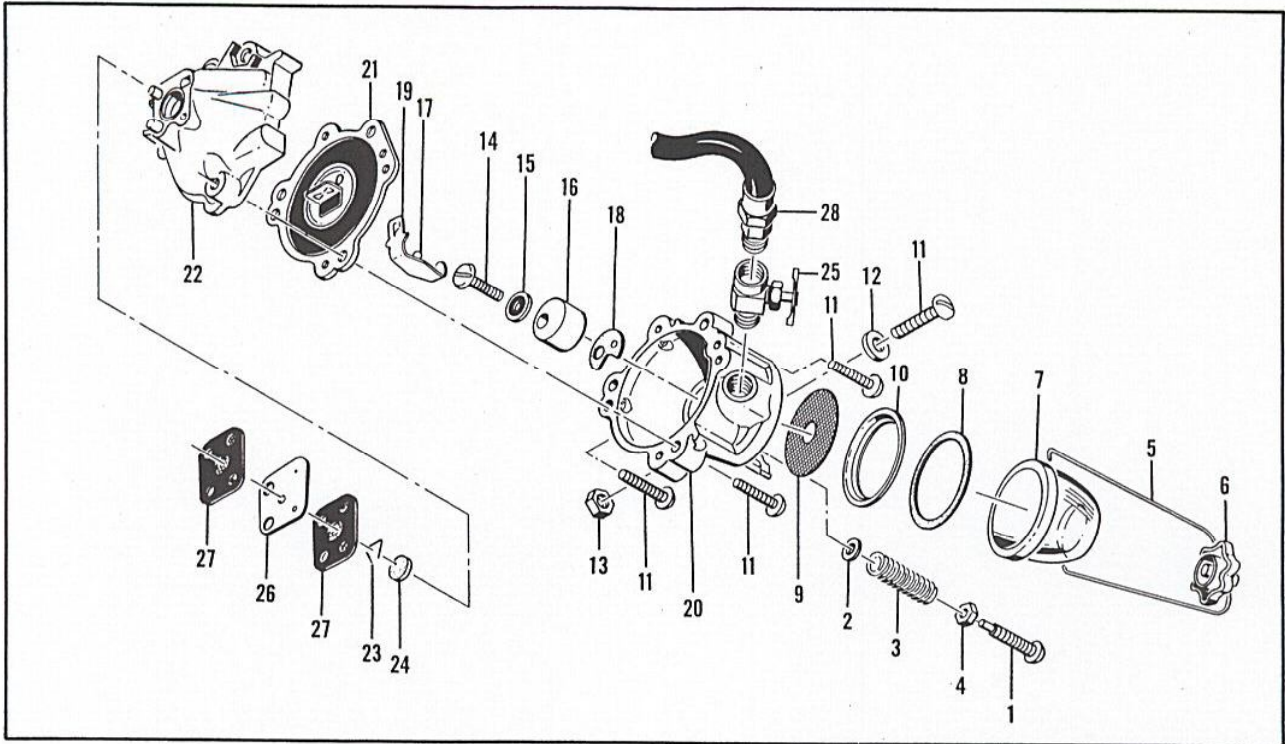


Figure 10. Model 3-25 Carburetor

FIGURE 10. MODEL 3-25 CARBURETOR.

FIG. & INDEX NO.	PART NO.	DESCRIPTION	UNITS PER ASSY	USABLE ON CODE
		1 2 3 4 5 6 7		
Code: "A" indicates parts used on Model 3-25 engines.				
10-1	19239	Screw	1	A
-2	100296	Washer - No. 6	1	A
-3	19183	Spring	1	A
-4	101075	Nut - Hex 10-32	1	A
-5	19386	Bail Assembly	1	A
-6	19388	. Cup Nut Assembly	1	A
-7	17167A	Bowl	1	A
-8	17168A	Gasket	1	A
-9	19805	Filter - Sediment bowl	1	A
-10	19808	Retainer - Filter	1	A
	19214	Carburetor	1	A
-11	101992	. Screw - Rd hd 10-24 x 7/8 in. lg	4	A
-12	100352	. Washer	1	A
-13	101191	. Nut - Hex 10-24	1	A
-14	101904	. Screw - Pan hd 10-24 x 3/4 in. lg	1	A
-15		. Washer - Lock-O-Seal	1	A
-16	19486B	. Ball Seat Assembly	1	A
-17	100302	. Ball	1	A
-18	19487	. Gasket - Ball seat	1	A
-19	19148A	. Hook and Pin Assembly	1	A
-20	19489	. Body - Diaphragm chamber	1	A
-21	19164	. Diaphragm Assembly	1	A
-22	19178	. Cover Assembly	1	A
-23	19268	. Retaining Ring	1	A
-24	19267	. Valve - Check	1	A
-25	101437	Valve - Shut-off	1	A
-26	19155	Plate - Orifice	1	A
-27	19697	Gasket - Carburetor to crankcase	2	A
-28	101271	Fuel Line	1	A

3-25, 4-30 SERIES ENGINES

The information contained in this Master Illustrated Parts List is based on original Illustrated Parts Lists, Engineering Records and the Master Parts Price List and is accurate to the best of our knowledge. Additions and changes will be covered in special lists to be issued periodically to distributors and dealers. The Master Illustrated Parts List will be revised and reissued annually if necessary.

This Master Illustrated Parts List carries all the available parts for servicing and repairing the listed chain saw engines. When assemblies are no longer sold but parts are available for repair of the assemblies, the individual parts are listed under the no-longer available assembly and the replacement assembly is carried in parenthesis directly after the name of the part. Replacement assemblies when used in the production of other models appear in sequence in the various lists. When the replacement assembly was not used in the production of other models, the replacement assembly and its parts are boxed.

Each chain saw model is given a code letter. Whenever the code letter appears in the right hand column, the part is used on the engines of the model for which the code letter stands. When a part is used on all models covered in the Master Illustrated Parts List, the word "All" appears in the right-hand column instead of the code letters. When a model uses two different assemblies to do the same thing, earlier engines using the first assembly are coded as (for example) "A¹" and the later engines with the second assembly are coded "A²".

Names of parts have been checked and made to agree with the names given in the Master Parts Price List except in a very few cases where additional nomenclature was required.

The illustrations of the individual parts do not necessarily picture all the differences between parts with the same item number because the illustrations would be too complicated for use if they did. Instead, the illustration shows a representative part for each item number.