

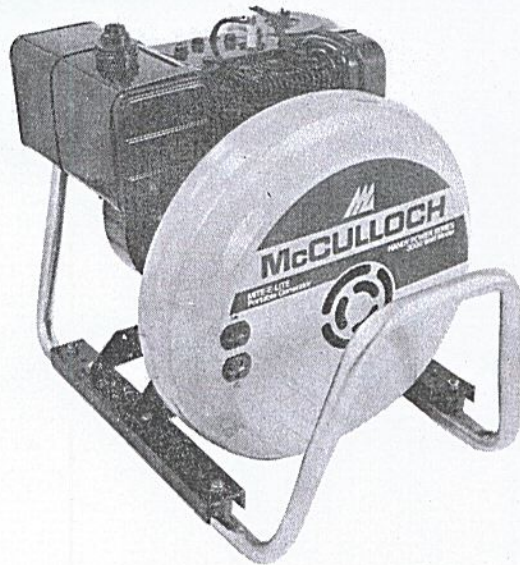
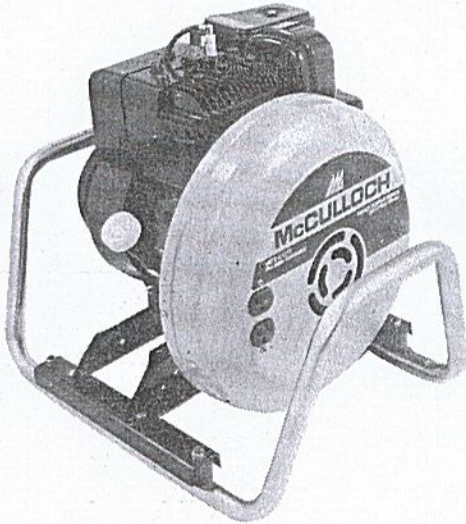
McCulloch Corp.



PORTABLE GENERATORS

MODELS: HP-1200, HP-2000, HP-3000

MODEL	FACTORY NUMBER	SERIAL NO. PREFIX
HP-1200	200043	11-
HP-2000	200044	11-
HP-3000	200045	11-



McCULLOCH CORPORATION

5400 ALLA ROAD
LOS ANGELES, CA 90009

P/N 22173-R1
JANUARY 1981

HP-1200
 HP-2000
 HP-3000

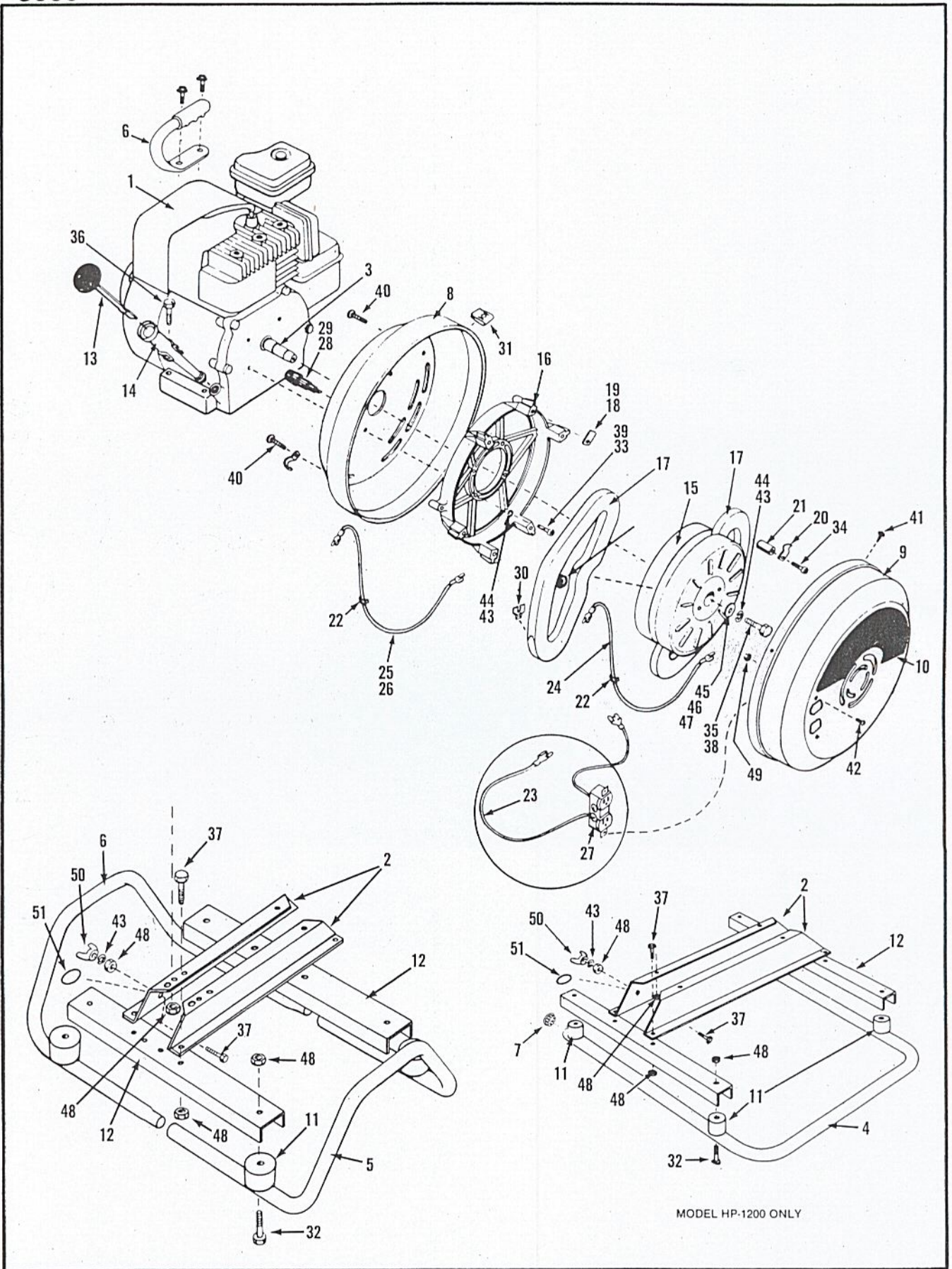


Figure 1. General - Exploded View

Figure 1. General - Exploded View

ITEM NO.	DESCRIPTION	HP-1200		HP-2000		HP-3000	
		P/N	QTY.	P/N	QTY.	P/N	QTY.
1	Engine	210497	1	210498	1	210499	1
2	Engine Rail	21844	2	21844	2	21844	2
3	Crankshaft	22004	1	22128	1	22120	1
4	Tube Base	21592	1	nr	nr	nr	nr
5	Cradle Half	nr	nr	21901	2	21862	2
6	Handle Assembly	21671	1	nr	nr	nr	nr
7	Hole Plug	22146	2	nr	nr	nr	nr
8	Back Cover	21602	1	21602	1	21681	1
9	Front Cover	21666	1	21666	1	220748	1
10	Front Cover Label	210076	1	210077	1	210079	1
11	Isolator	21804	4	21804	4	21804	4
12	Isolator Channel	21845	2	21845	2	22002	2
13	Dipstick	nr	nr	21989	1	nr	nr
14	Dipstick Tube Assembly	nr	nr	21853	1	nr	nr
15	Rotor	21597	1	22171	1	22106	1
16	Stator Mount	22094	1	22094	1	22093	1
17	Stator Half	21871	2	21848	2	21866	2
*18	Stator Shim Kit (1/32" pkg/3)	21884	1	21884	1	21884	1
*19	Stator Shim Kit (1/16" pkg/3)	21885	1	21885	1	21885	1
20	Holding Spring	21850	6	21850	6	21850	6
21	Bushing	21860	6	21860	6	21860	6
22	Wire Keeper	21643	6	21643	6	21643	6
23	Wiring Harness (wires only)	21872	1	22172	1	210244	1
24	Jumper Wire	22098	2	22098	2	nr	nr
25	Fuse Wire	22111	1	210242	1	210246	1
26	Fuse Wire	nr	nr	nr	nr	210247	1
27	Receptacle, 110v	21150	1	21788	1	22018	1
28	Fuse Holder	21270	1	21270	1	21270	2
29	Fuse	21841	1	21281	1	21280	2
30	Terminal	21874	2	21874	2	nr	nr
31	Speed Nut	21726	4	21726	4	21726	4
32	Bolt, Curved Head (5/16-18 x 1-1/4)	21876	4	21876	4	21876	4
33	Screw, Hex Head Cap (5/16-24 x 1)	22068	4	22068	4	nr	nr
34	Screw, Hex Head Cap (1/4-20 x 1-1/4)	21950	6	21950	6	21950	6
35	Screw, Hex Head Cap (5/16-24 x 2-3/8)	21857	1	nr	nr	nr	nr
36	Screw, Hex Head Cap (5/16-18 x 3/4)	21878	4	21878	4	21878	4
37	Screw, Hex Head Cap (5/16-18 x 1)	21647	5	21647	5	21647	5
38	Screw, Hex Head Cap (3/8-24 x 3-3/4)	nr	nr	22090	1	22090	1
39	Screw, Hex Head Cap (3/8-16 x 1)	nr	nr	nr	nr	21003	4
40	Screw, Thread Forming (1/4-20 x 3/4)	22070	3	22070	3	22070	4
41	Screw, Pan Head Sheet Metal (No. 8)	21650	4	21650	4	21650	4
42	Screw, Round Head Machine (No. 8-32 x 1/2)	21899	2	21899	2	21899	2
43	Washer, Lock (5/16)	21657	6	21657	6	21657	1
44	Washer, Lock (3/8)	nr	nr	21130	1	21130	5
45	Washer, Flat (5/16 x 3/16)	21859	1	nr	nr	nr	nr
46	Washer, Flat (3/8 x 1/8)	nr	nr	22132	1	nr	nr
47	Washer, Flat (3/8 x 1/4)	nr	nr	nr	nr	22092	1
48	Nut, Keps (5/16-18)	21653	13	21653	13	21653	13
49	Nut, Keps (No. 8-32)	21675	2	21675	2	21675	2
50	Nut, Wing (5/16-18)	21654	1	21654	1	21654	1
51	Ground Label	22142	1	22142	1	22142	1

Spark Arrester Screens

Spark arrester screens and deflectors for exhaust mufflers are required in many areas. It is recommended that you check local regulations before going into restricted areas to determine if special equipment is required. Spark arrester equipment is available through Briggs & Stratton dealers under the following part numbers:

GENERATOR MODEL	SPARK ARRESTER
HP-1200	P/N 392191
HP-2000, HP-3000	P/N 392195

Important Torque Values

ITEM NO.	DESCRIPTION	TORQUE VALUE In.-lbs.
	Retaining Bolts - Engine to Back Cover:	
33	HP-1200, HP-2000	120-144
39	HP-3000	216-240
	Rotor Retaining Bolt:	
35	HP-1200	240-264
38	HP-2000, HP-3000	360-420
34	Stator Retaining Screws	55-60
40	Casting Retaining Bolts	60-70
	Engine Head Bolts:	
	HP-1200, HP-2000	140
	HP-3000	165

All remaining hardware to be securely tightened within reasonable limits.

Propane Conversion Kit

MODEL	P/N
HP-1200, HP-2000	21708
HP-3000	21502

Special Tools

DESCRIPTION	P/N
Tool Kit Complete	210118
Rotor Holding Wrench	21880
Stator Clearance Gage	21925
Stator Shim Gage	21877
Rotor Gap Gage	21509
Rotor Puller Bolt (8" Rotor)	21882
Rotor Puller Bolt (9-1/2" Rotor)	210117
Puller Bolt Pilot	22145

Additional Stator Shims Available

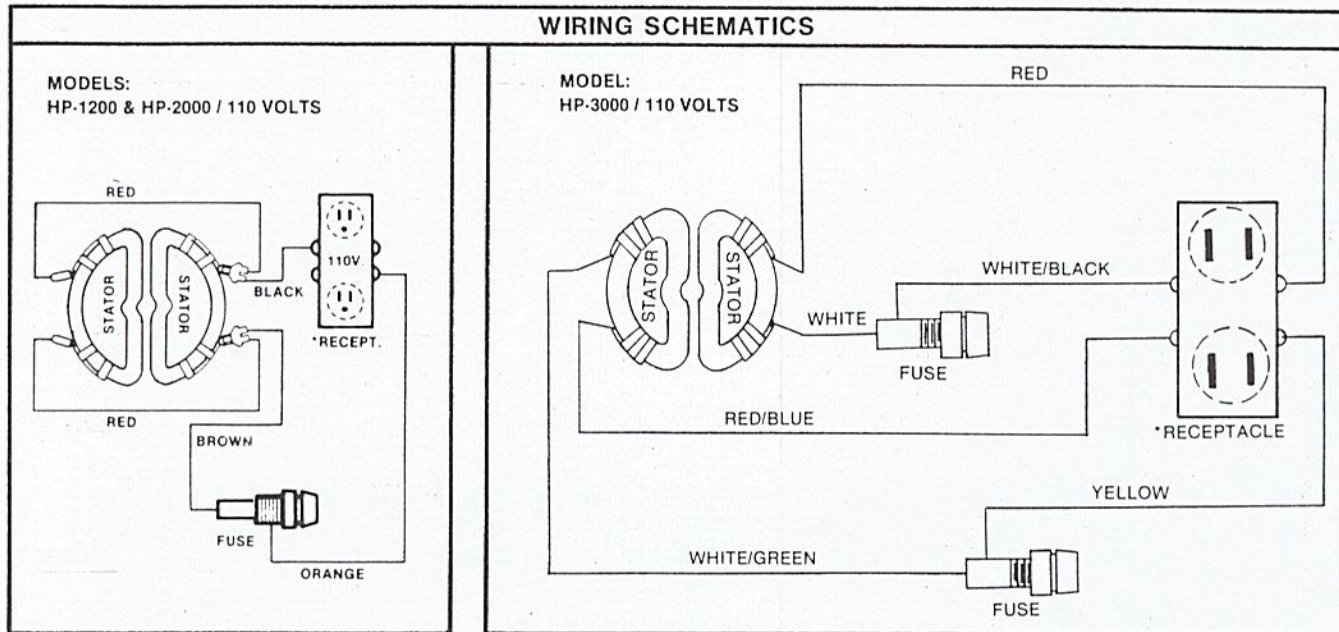
SIZE	P/N
1/32"	210983
3/64"	22136
1/16"	210985
5/64"	22137
3/32"	22138
7/64"	22139
1/8"	22140
9/64"	22141

INTRODUCTION

The McCulloch Portable Generator is one of the world's first successful entries in the field of permanent magnet alternators. McCulloch's unique Axial Air Gap design has enabled us to produce one of the

lightest, most compact, trouble-free alternators in the industry. It is powered by a 4-cycle, air-cooled gasoline engine, producing 60-cycle, AC current, at 3600 RPM.

WIRING SCHEMATICS



PERFORMANCE SPECIFICATIONS

MODEL	VOLTAGE	CURRENT (AMPERES)	RATED CAPACITY (WATTS)	FREQUENCY (HERTZ/CPS)	*RATED CAPACITY is based on factory tests on typical units and is subject to and limited by the temperature, altitude, fuel, and of the conditions specified by the manufacturer of the applicable engine.
HP-1200	110	10.9	1200*	60	
HP-2000	110	18.2	2000*	60	
HP-3000	110	27.3	3000*	60	

OPERATING INSTRUCTIONS

- Fill engine crankcase with oil - use a high-quality detergent oil, classified for service - SC, SD, SE, or MS. NOTHING should be added to the recommended oil. (See Briggs & Stratton engine manual for proper oil weight for winter or summer.)
- Start engine and allow a few minutes warm-up before applying desired load. Refer to Briggs & Stratton manual for detailed instructions. (NEVER ATTEMPT TO START ENGINE WITH A LOAD ON GENERATOR.)
- Apply desired load, making sure that the load

DOES NOT exceed the rated capacity of your model generator. See identification tag on the generator for rated output.

- ALWAYS check engine crankcase oil with each tank of gas to insure long, dependable service.

CAUTION: Be sure to change the oil as recommended by Briggs & Stratton: new engine after first five (5) hours - every 25 hours thereafter.

NOTE: The McCulloch Mite-E-Lite, Inc. limited warranty does not cover the engine; all engine warranty and service must be taken to an authorized Briggs & Stratton dealer.

MAINTENANCE

Due to the fact that there are no slip rings or brushes, there is no specific maintenance required for the generator itself. During routine engine maintenance though, check to be sure all nuts, bolts, and other fasteners are secure, all wires are in

good condition and not frayed or worn, and the entire unit is in good working order. Once again, engine maintenance is essential for dependable generator service.