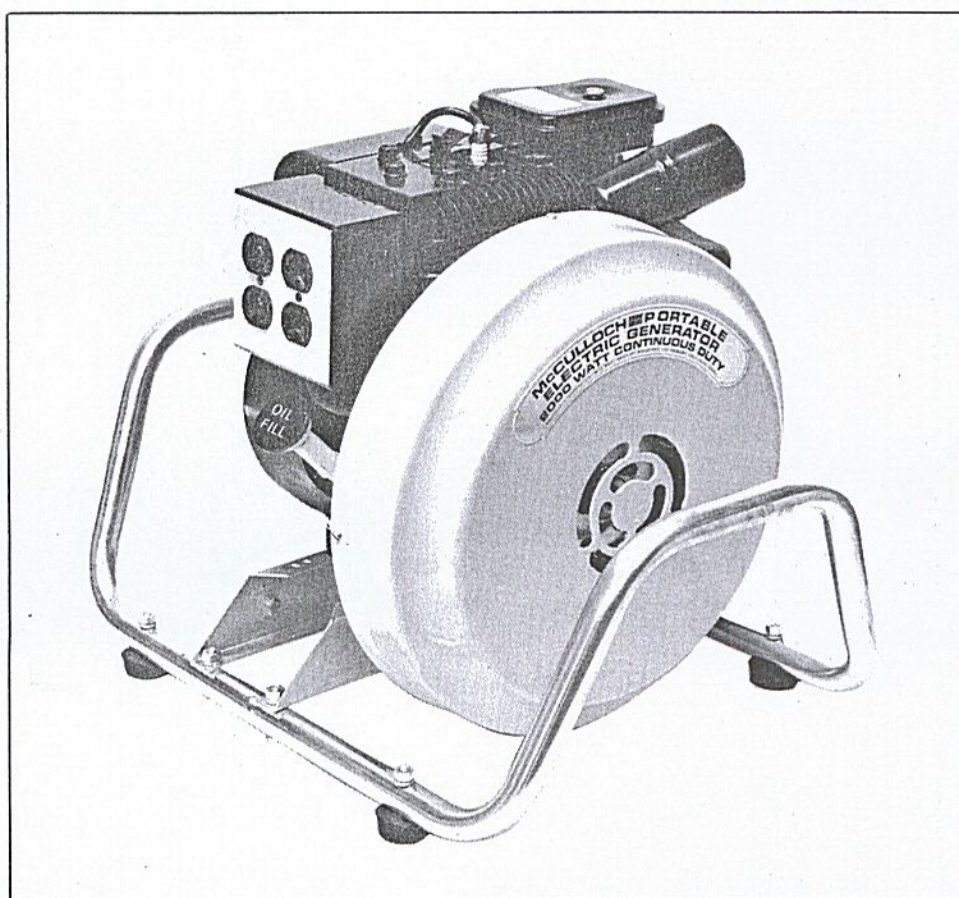


# McCULLOCH PORTABLE GENERATOR

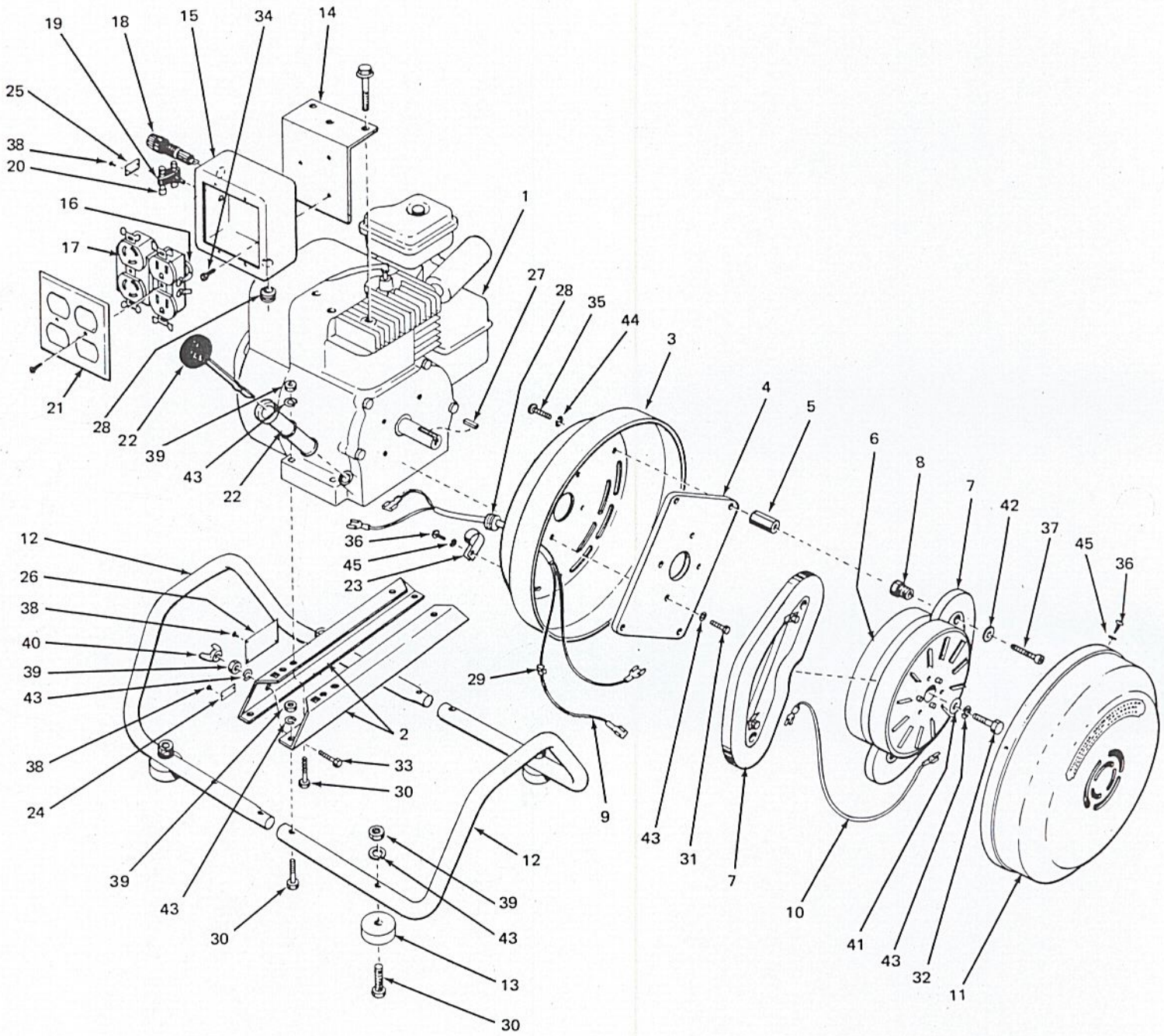
MODEL H-2000  
TYPE 11-400465A,B,C,D,E



**McCULLOCH CORP.**  
6101 WEST CENTURY BOULEVARD  
LOS ANGELES, CALIFORNIA 90045



WHEN ORDERING PARTS, PLEASE SPECIFY  
GENERATOR MODEL AND TYPE NO.





Item	Description	Part #	Type 11400465A Unit Per Assy	Type 11400465B Unit Per Assy	Type 11400465C Unit Per Assy	Type 11400465D Unit Per Assy	Type 11400465E Unit Per Assy
1	Engine Assy	21600	1	1	1	1	1
2	Rail, Engine	21601	2	2	2	2	2
3	Cover, Back	21602	1	1	1	1	1
4	Plate, stator support	21603	1	1	1	1	1
5	Post, Stator support	21604	4	4	4	4	4
6	Rotor Assy	21605	1	1	1	1	1
7	Stator Assy	21606	2	2	nr	nr	2
	Stator Assy	21607	nr	nr	2	2	nr
8	Screw, Adj	21608	4	4	4	4	4
9	Harness, Wiring	21609	1	nr	nr	nr	nr
	Harness, Wiring	21610	nr	1	1	1	1
10	Wire Assy, Jumper	21611	1	1	1	1	1
11	Cover, Front	21612	1	1	1	1	1
12	Cradle	21613	1	1	1	1	1
13	Mount, Rubber	21614	4	4	4	4	4
14	Bracket, Recp Box	21615	1	1	1	1	1
15	Box, Recp	21616	1	1	1	1	1
16	Assy, Wire	21617	1	nr	nr	nr	nr
	Assy, Wire	21618	nr	1	nr	nr	nr
	Assy, Wire	21619	nr	nr	1	nr	nr
	Assy, Wire	21620	nr	nr	nr	1	nr
	Assy, Wire	21621	nr	nr	nr	nr	1
17	Recpt, 115V, 20 Amp reg	21622	nr	nr	1	nr	nr
	Recpt, 115V, 20 Amp twist	21623	nr	nr	1	nr	nr
	Recpt, 115V, 15 Amp reg	21624	nr	nr	nr	1	nr
	Recpt, 115V, 15 Amp twist	21625	nr	nr	nr	1	nr
	Recpt, 230 Aust	21626	2	nr	nr	nr	nr
	Recpt, 230 Gardy	21627	nr	nr	nr	nr	1
	Recpt, 230 reg-	21628	nr	2	nr	nr	1
18	Holder, fuse	21629	nr	nr	1	nr	nr
19	Holder, spare fuse	21630	nr	nr	1	nr	nr
20	Fuse	21631	nr	nr	3	nr	nr
21	Cover, Recpt, 15 Amp	21632	nr	1	nr	1	nr
	Cover, Recpt, 20 Amp	21633	nr	nr	1	nr	nr
	Cover, Recpt, Aust	21634	1	nr	nr	nr	nr
	Cover, Recpt, Europe	21635	nr	nr	nr	nr	1
22	Tube, oil Fill and Dipstick Assy	21636	1	1	1	1	1
23	Clamp, Oil fill tube	21637	1	1	1	1	1
24	Tag, Ground	21638	1	1	1	1	1
25	Tag, Fuse	21639	nr	nr	1	nr	nr
26	Tag, Serial	21640	1	1	1	1	1
27	Key, Engine	21641	1	1	1	1	1
28	Grommet, rubber	21642	2	2	2	2	2
29	Keeper, wire	21643	4	4	4	4	4
30	Hx Hd cap screw 5/16-18 x 1-1/2	21644	12	12	12	12	12
31	Cap Screw, Hex Hd, 5/16-24 x 3/4	21645	4	4	4	4	4
32	Cap Screw, Hex Hd, 5/16-24 x 2-3/4	21646	1	1	1	1	1
33	Cap Screw, Hex Hd, 5/16-18 x 1	21647	1	1	1	1	1
34	Screw, Hex Hd, #8 type B self-tapping	21648	3	3	3	3	3
35	Screw, pan head, 1/4-20 x 1	21649	4	4	4	4	4
36	Screw, pan hd, #8 type AB sheet metal	21650	5	5	5	5	5
37	Cap screw, hx soc hd nylok, 1/4-20 x 1-1/4	21651	4	4	4	4	4
38	Screw, Drive #2 x 3/16	21652	6	6	8	6	6
39	Nut, hx, 5/16-18	21653	13	13	13	13	13
40	Nut, wing, 5/16-18	21654	1	1	1	1	1
41	Washer, Flat, 5/16 reg	21655	1	1	1	1	1
42	Washer, flat, reg 1/4	21656	4	4	4	4	4
43	Washer, lock, 5/16	21657	18	18	18	18	18
44	Washer, lock, 1/4	21658	4	4	4	4	4
45	Washer, lock #8	21659	8	8	8	8	8
46	Parts list illustrated	21660	1	1	1	1	1

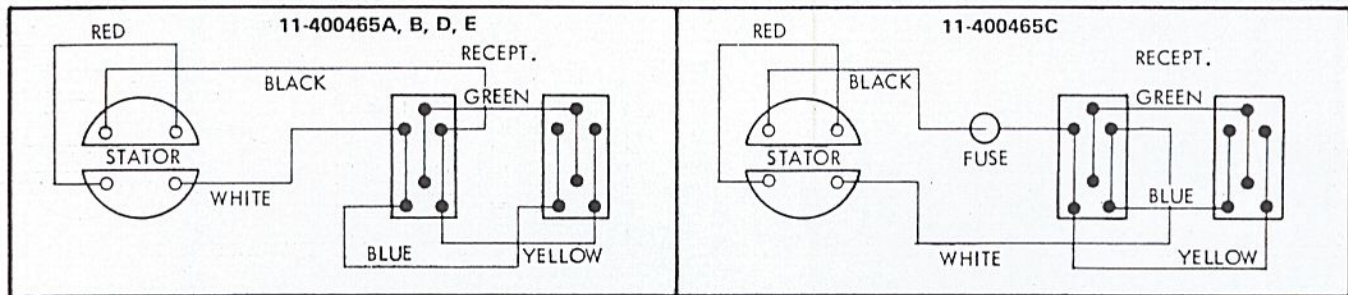


## INTRODUCTION

The McCulloch portable generator is one of the world's first successful entries in the field of permanent magnet alternators. McCulloch's unique axial air gap design has enabled us to produce one of the lightest, most compact, trouble free alternators in the industry. It is powered by a 4-cycle air cooled gasoline engine, producing 60 cycle A.C. current, at 3600 r.p.m. or 50 cycle AC current at 3000 rpm.

## SPECIFICATIONS

TYPE	VOLTS	AMPS	HERTZ/CYCLE
11-400465-A, E	230	8.7	50
11-400465-C, D	115	17.4	60
11-400465-B	230	8.7	50/60



## OPERATING INSTRUCTIONS

1. Before starting engine read the enclosed Briggs and Stratton instruction booklet for proper oil and maintenance.
2. After the proper oil and gasoline has been installed, start engine and allow a few minutes warm up time before applying desired load. (Never start unit under load.)
3. Apply desired load, making sure that load does not exceed the rated capacity of your model alternator.
4. Always check oil with each tank of gasoline, to insure long dependable service.

### CAUTION

Be sure to change and check oil as recommended by Briggs & Stratton. Dirty oil will wear engine bearings, resulting in damage to the engine as well as the alternator.

## MAINTENANCE

Our alternator has no brushes or slip rings, therefore, there is virtually no maintenance on the alternator portion of this machine. However, the engine bearings support the alternator making proper engine maintenance important to deliver many hours of trouble free service.