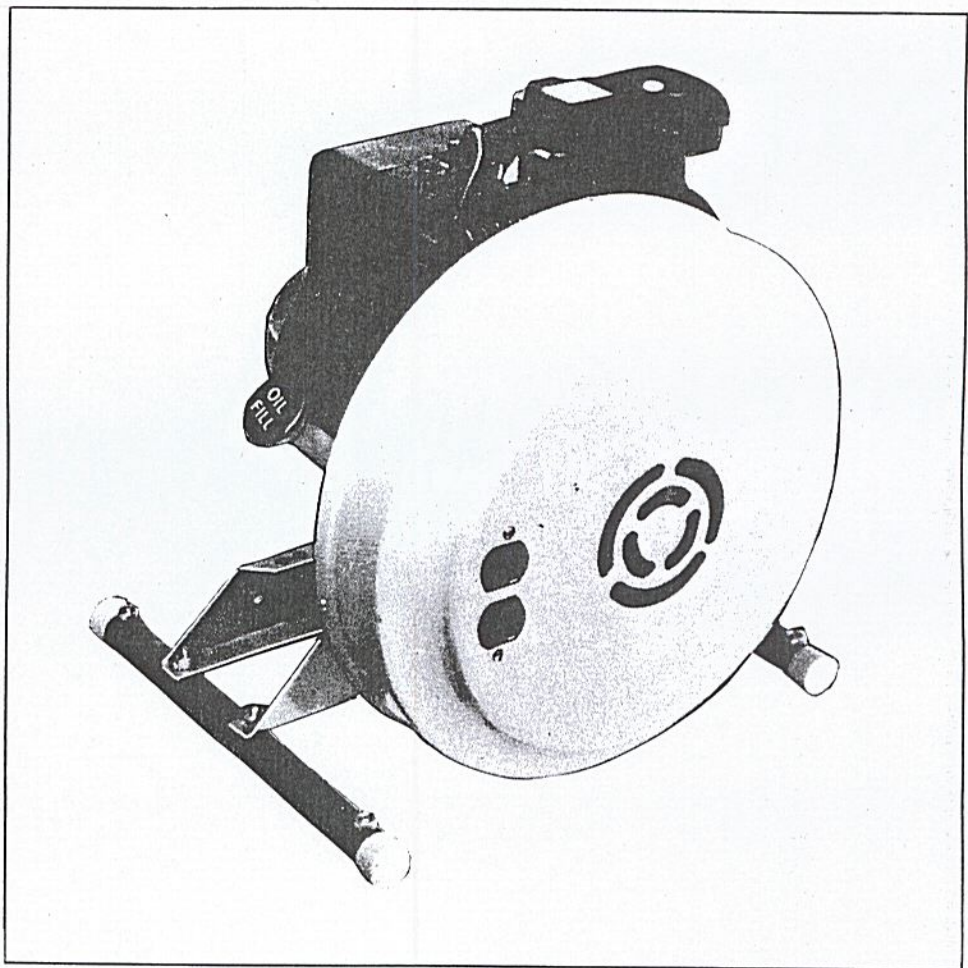
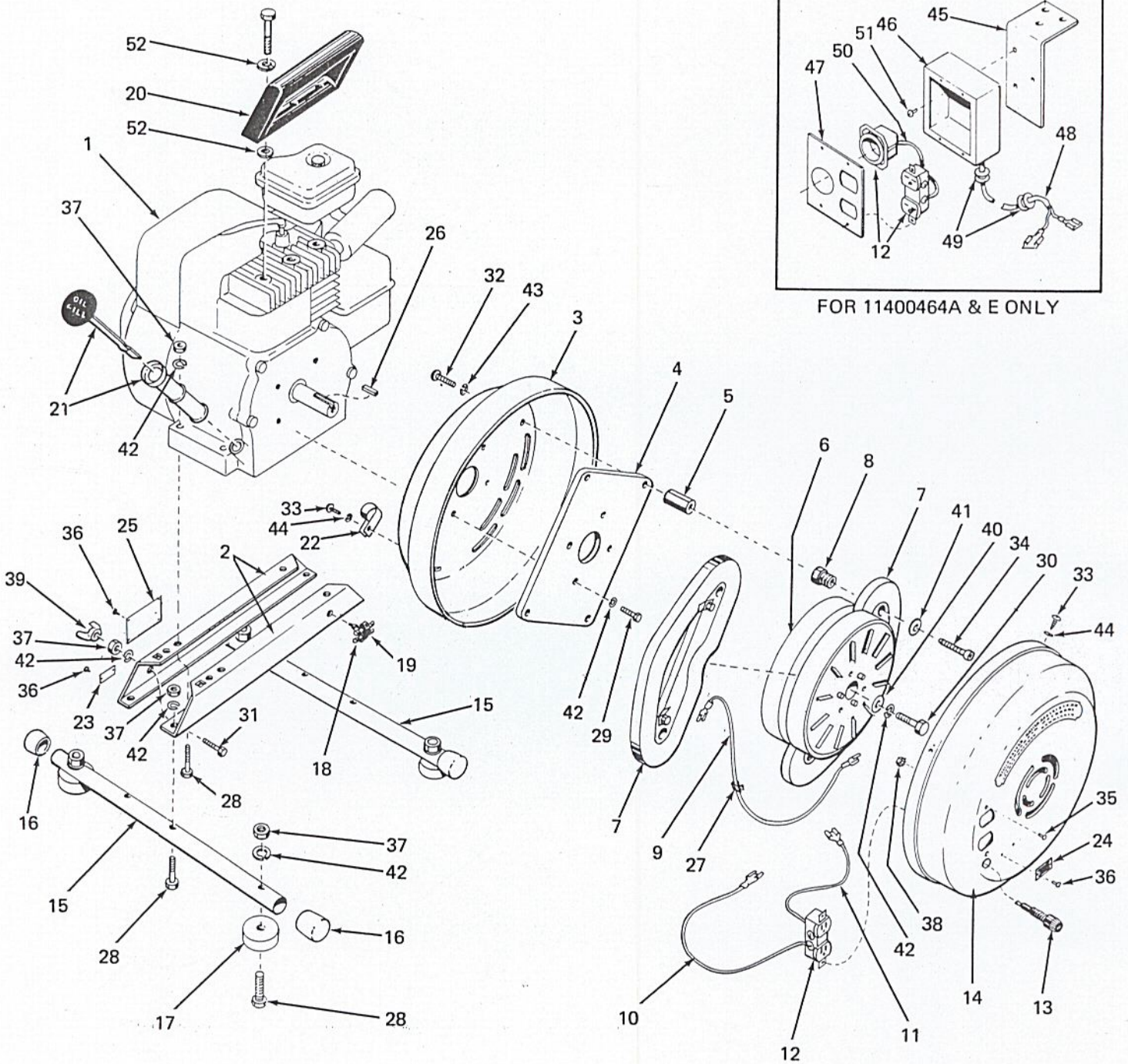


McCULLOCH
PORTABLE
GENERATOR

MODEL H-1500
TYPE II-400464A,B,C,D,E



McCULLOCH CORP.
6101 WEST CENTURY BOULEVARD
LOS ANGELES, CALIFORNIA 90045



WHEN ORDERING PARTS, PLEASE SPECIFY GENERATOR MODEL AND TYPE NO.

Item	Description	Part #	Type 11400464A Unit Per Assy	Type 11400464B Unit Per Assy	Type 11400464C Unit Per Assy	Type 11400464D Unit Per Assy	Type 11400464E Unit Per Assy
1	Engine Assy	21661	1	1	1	1	1
2	Rail, Engine	21601	2	2	2	2	2
3	Cover Back	21602	1	1	1	1	1
4	Plate, Stator Support	21603	1	1	1	1	1
5	Post, Stator	21604	4	4	4	4	4
6	Rotor Assy	21605	1	1	1	1	1
7	Stator Assy	21662	2	2	nr	nr	2
	Stator Assy	21663	nr	nr	2	2	nr
8	Screw, Adjusting	21608	4	4	4	4	4
9	Wire Assy, Jumper	21611	1	1	1	1	1
10	Assy Wire	21664	nr	1	1	1	nr
11	Assy Wire	21665	nr	1	1	1	nr
12	Receptacle, 115V, 15A Reg.	21624	nr	nr	1	1	nr
	Receptacle, 230V, Aust	21626	2	nr	nr	nr	nr
	Receptacle, 230V, Gardy	21627	nr	nr	nr	nr	1
	Receptacle, 230V, Reg.	21628	nr	1	nr	nr	1
13	Holder, Fuse	21629	nr	nr	1	nr	nr
14	Cover, Front	21612	1	nr	nr	nr	1
	Cover, Front	21666	nr	1	nr	1	nr
	Cover, Front	21667	nr	nr	1	nr	nr
15	Base Support	21668	2	2	2	2	2
16	Cap, End	21669	4	4	4	4	4
17	Mount, Rubber	21614	4	4	4	4	4
18	Holder, Spare Fuse	21630	nr	nr	1	nr	nr
19	Fuse	21670	nr	nr	3	nr	nr
20	Handle	21671	1	1	1	1	1
21	Tube, Oil Fill & Dip Stick Assy	21636	1	1	1	1	1
22	Clamp, Oil Fill Tube	21672	1	1	1	1	1
23	Tag, Ground	21638	1	1	1	1	1
24	Tag, Fuse	21639	nr	nr	1	nr	nr
25	Tag, Serial No.	21673	1	1	1	1	1
26	Key, Engine	21641	1	1	1	1	1
27	Keeper, Wire	21643	4	4	4	4	4
28	Cap Screw, Hex Hd, 5/16-18 x 1-1/2	21644	12	12	12	12	12
29	Cap Screw, Hex Hd, 5/16-24 x 3/4	21645	4	4	4	4	4
30	Cap Screw, Hex Hd, 5/16-24 x 2-3/4	21646	1	1	1	1	1
31	Cap Screw, Hex Hd, 5/16-18 x 1	21647	1	1	1	1	1
32	Screw, Pan Hd, 1/4-20 x 1 Phillips	21649	4	4	4	4	4
33	Screw, Pan Hd, #8 Type AB Sheet Metal Phillips	21650	5	5	5	5	5
34	Cap Screw, Hex, Soc. Hd, Nylok, 1/4-20 x 1-1/4	21651	4	4	4	4	4
35	Screw #8-32 x 3/8 Pan Hd, Phillips	21674	nr	2	2	2	nr
36	Screw, Drive #2 x 3/16	21652	6	6	8	6	6
37	Nut, Hex, 5/16-18	21653	13	13	13	13	13
38	Nut, Hex, #8-32 Keps	21675	nr	2	2	2	nr
39	Nut, Wing, 5/16-18	21654	1	1	1	1	1
40	Washer, Flat, 5/16 Reg.	21655	1	1	1	1	1
41	Washer, Flat, 1/4 Reg.	21656	4	4	4	4	4
42	Washer, Lock, 5/16	21657	18	18	18	18	18
43	Washer, Lock, 1/4	21658	4	4	4	4	4
44	Washer, Lock, #8	21659	8	5	5	5	8
45	Bracket, Recpt. Box	21615	1	nr	nr	nr	1
46	Box, Recept.	21616	1	nr	nr	nr	1
47	Cover, Recept, Aust.	21634	1	nr	nr	nr	nr
	Cover, Recept, Europe	21635	nr	nr	nr	nr	1
48	Harness, Wiring	21609	1	nr	nr	nr	nr
	Harness, Wiring	21610	nr	nr	nr	nr	1
49	Grommet, Rubber	21642	2	nr	nr	nr	2
50	Wire Assy.	21617	1	nr	nr	nr	nr
	Wire Assy.	21621	nr	nr	nr	nr	1
51	Screw, Hex Washer Hd, #8 Type "B" Self Tapping	21648	3	nr	nr	nr	3
52	Washer, Phenolic	21676	8	6	6	6	8
53	Parts List Illustrated	21677	1	1	1	1	1

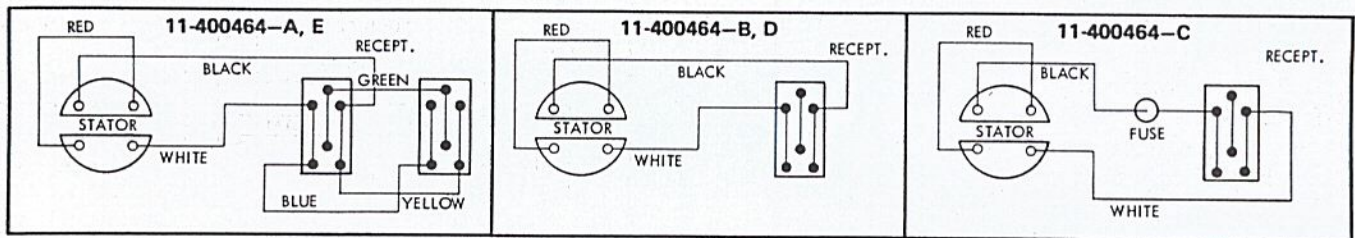
INTRODUCTION

The McCulloch portable generator is one of the world's first successful entries in the field of permanent magnet alternators. McCulloch's unique axial air gap design has enabled us to produce one of the lightest, most compact, trouble free alternators in the industry. It is powered by a 4-cycle air cooled gasoline engine, producing 60 cycle A.C. current, at 3600 r.p.m. or 50 cycle AC current at 3000 rpm.

SPECIFICATIONS

TYPE	VOLTS	AMPS	HERTZ/CYCLE
11-400464-A, E	230	*4.9	50
11-400464-C, D	115	13	60
11-400464-B	230	*4.9/6.5	50/60

*50 cycle models derated by 25 percent



OPERATING INSTRUCTIONS

1. Before starting engine read the enclosed Briggs and Stratton instruction booklet for proper oil and maintenance.
2. After the proper oil and gasoline has been installed, start engine and allow a few minutes warm up time before applying desired load. (Never start unit under load.)
3. Apply desired load, making sure that load does not exceed the rated capacity of your model alternator.
4. Always check oil with each tank of gasoline, to insure long dependable service.

CAUTION

Be sure to change and check oil as recommended by Briggs & Stratton. Dirty oil will wear engine bearings, resulting in damage to the engine as well as the alternator.

MAINTENANCE

Our alternator has no brushes or slip rings, therefore, there is virtually no maintenance on the alternator portion of this machine. However, the engine bearings support the alternator making proper engine maintenance important to deliver many hours of trouble free service.