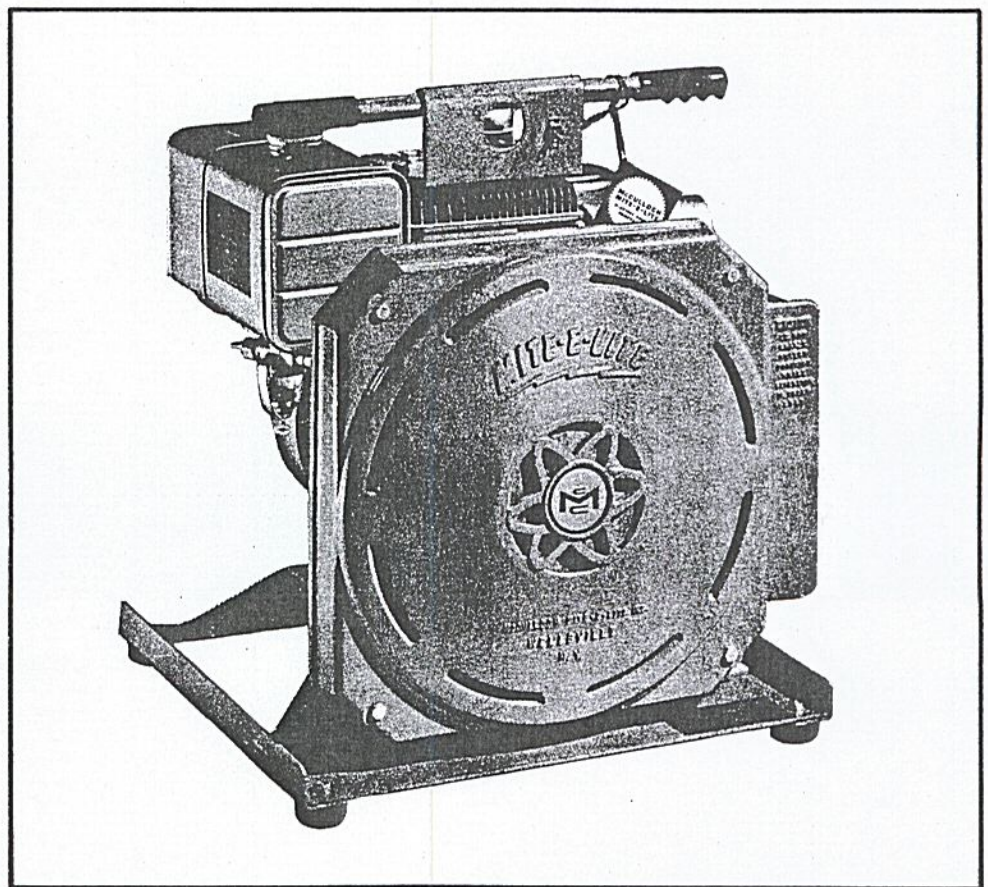


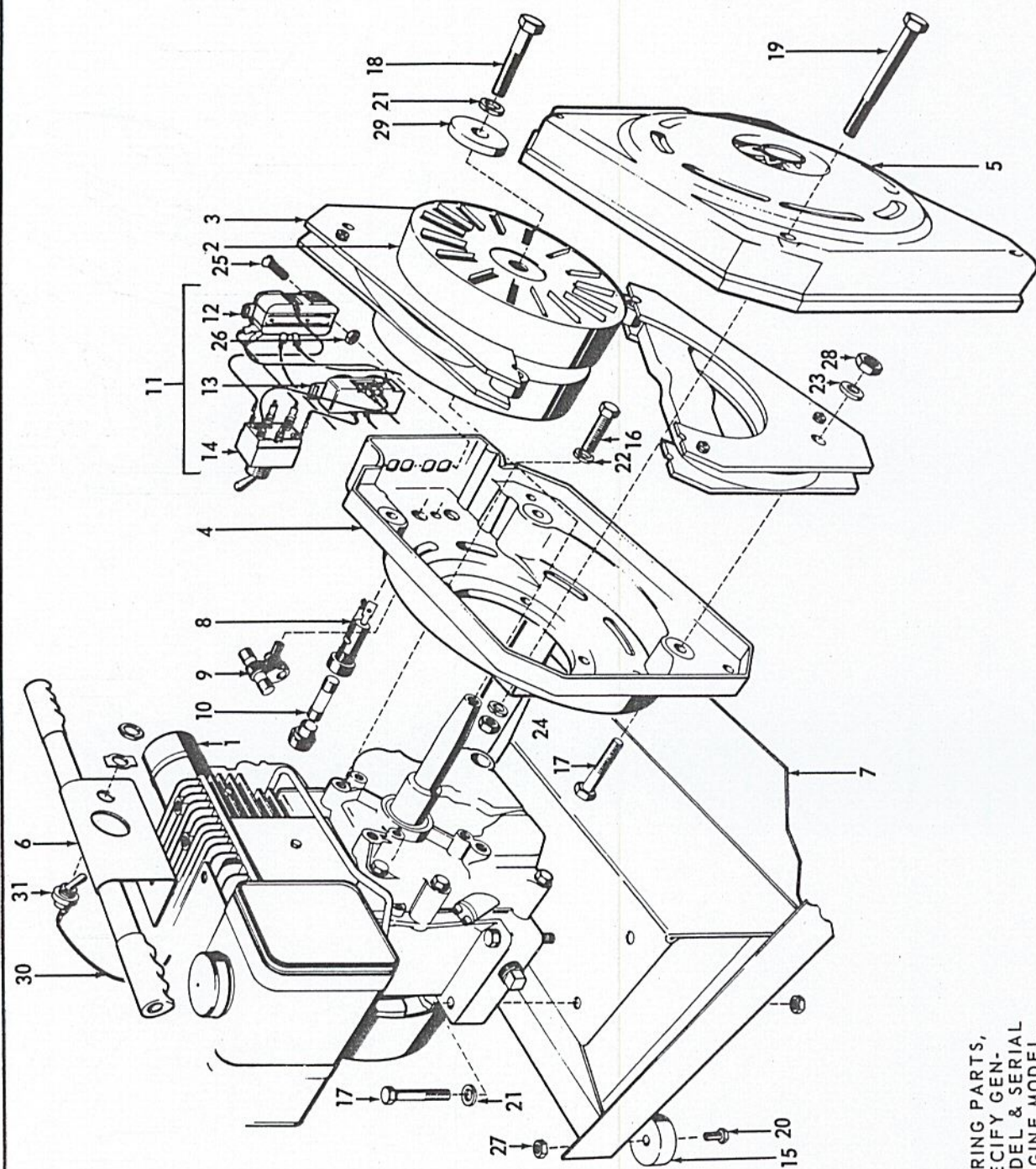
McCULLOCH MITE-E-LITE MAC 3000 GENERATOR ILLUSTRATED PARTS LIST



McCULLOCH CORPORATION

6101 West Century Boulevard

Los Angeles, California 90045



WHEN ORDERING PARTS,
PLEASE SPECIFY GEN-
ERATOR MODEL & SERIAL
NO., AND ENGINE MODEL.

Index No.	Part Number	Description	Units Per Assy	Index No.	Part Number	Description	Units Per Assy
1	21043	Engine (146432)	1	17	21050	Capscrew - 5/16-18 x 1-1/2"	8
2	21103	Rotor RB#3	1	18	21143	Capscrew - 5/16-24 x 1-3/4"	1
3	21113	Stator RB#3	1	19	21383	Capscrew - 1/4-20 x 2-3/4"	4
4	21093	Back Casting	1	20	21020	Capscrew - 1/4-20 x 3/4"	4
5	21094	Cover Casting	1	21	21070	Lockwasher - 5/16" Medium	5
6	21013	Carrying Handle	1	22	21130	Lockwasher - 3/8" Medium	4
7	21183	Engine Base	1	23	21210	Flat Washer - 5/8"	4
8	21270	Fuse Holder	2	24	21030	Lockwasher - 1/4" Medium	4
9	21290	Holder - Spare Fuse	1	25	21160	Screw - Pan Head - 10-24	4
10	21280	Fuses (15 Amp)	4	26	21170	Nut - 10-24	4
11	21333	Wiring Harness	1	27	21203	Nut - 1/4-20	8
12	21150	Receptacle (115V)	1	28	21080	Nut - 5/16-18	4
13	21392	Receptacle (230V)	1	29	21413	Flat Washer - 5/16"	1
14	21402	DPDT Switch	1	30	21403	Kill Switch Wire	1
15	21190	Rubber Mounts	4	31	21393	Kill Switch	1
16	21003	Capscrew - 3/8-16 x 1"	4				

INTRODUCTION

The Mite-E-Lite portable generator is one of the world's first successful entries in the field of permanent magnet alternators. Mite-E-Lite's unique axial air gap design has enabled us to produce one of the lightest, most compact, trouble free alternators in the industry. It is powered by a 4 cycle air cooled gasoline engine, producing 60 cycle A.C. current, at 3600 r.p.m.

OPERATING INSTRUCTIONS

1. Before starting engine read the enclosed Briggs and Stratton instruction booklet for proper oil and maintenance.
2. After the proper oil and gasoline has been installed, start engine and allow a few minutes warm up time before applying desired load. (Never start unit under load.)
3. Place engine throttle in fast position to obtain full A.C. 60 cycle current. A slower speed may be used in operating light bulbs, but should never be used in operating equipment.
4. Apply desired load, making sure that load does not exceed the rated capacity of your model alternator.
5. Always check oil with each tank of gasoline, to insure long dependable service.
6. When using 115 voltage the switch must be in the 115 position as marked. With this switch position, the 230 volt receptacle is dead. The maximum wattage available at 115 volts is 3000 watts. With the switch in the 230 volt position as marked both the 115 and the 230 receptacles are alive. In this position the 115 volt load must not exceed 1500 watts, and the total 115 and 230 volt must not exceed 3000 watts.

SPECIFICATIONS

Model	Watts	Voltage	Amps	Amps (Dead Short)	Cycle	Weight	Size
Mac 3000	3000	115	26.5				
		&		99.4	60	129 lbs.	18-1/2"x17"x19"
		230	13.3				

CAUTION

1. Do not change switch position while alternator is under load.
2. Be sure to change and check oil as recommended by Briggs & Stratton. Dirty oil will wear engine bearings, resulting in damage to the engine as well as the alternator.

MAINTENANCE

Our alternator has no brushes or slip rings, therefore, there is virtually no maintenance on the alternator portion of this machine. However, the engine bearings support the alternator making proper engine maintenance important to deliver many hours of trouble free service.

