

Illustrated Parts List

MODEL **SUPER-44** McCULLOCH CHAIN SAW

(#55045 S44-11712 FEBRUARY 1958②)

McCULLOCH MOTORS CORPORATION
6101 West Century Blvd., Los Angeles 45, Calif.

ILLUSTRATIONS

	Page
Figure 1. Engine Exploded View - General	2
Figure 2. Fuel System Components	4
Figure 3. Starter and Clutch Assembly	6
Figure 4. Chain Oiler, Bar and Chain	8
Figure 5. Powerhead Assembly	10
Figure 6. Carburetor Assembly	12
Figure 7. Handle and Control Assembly	14

NOTE: A complete parts price list is available upon request.

The following pages contain an illustrated parts list for the Model Super-44 Chain Saw. Due to small differences between saws, it is important that the Serial Number of your saw be included whenever spare parts are ordered. This will assure receiving the proper parts from your dealer.

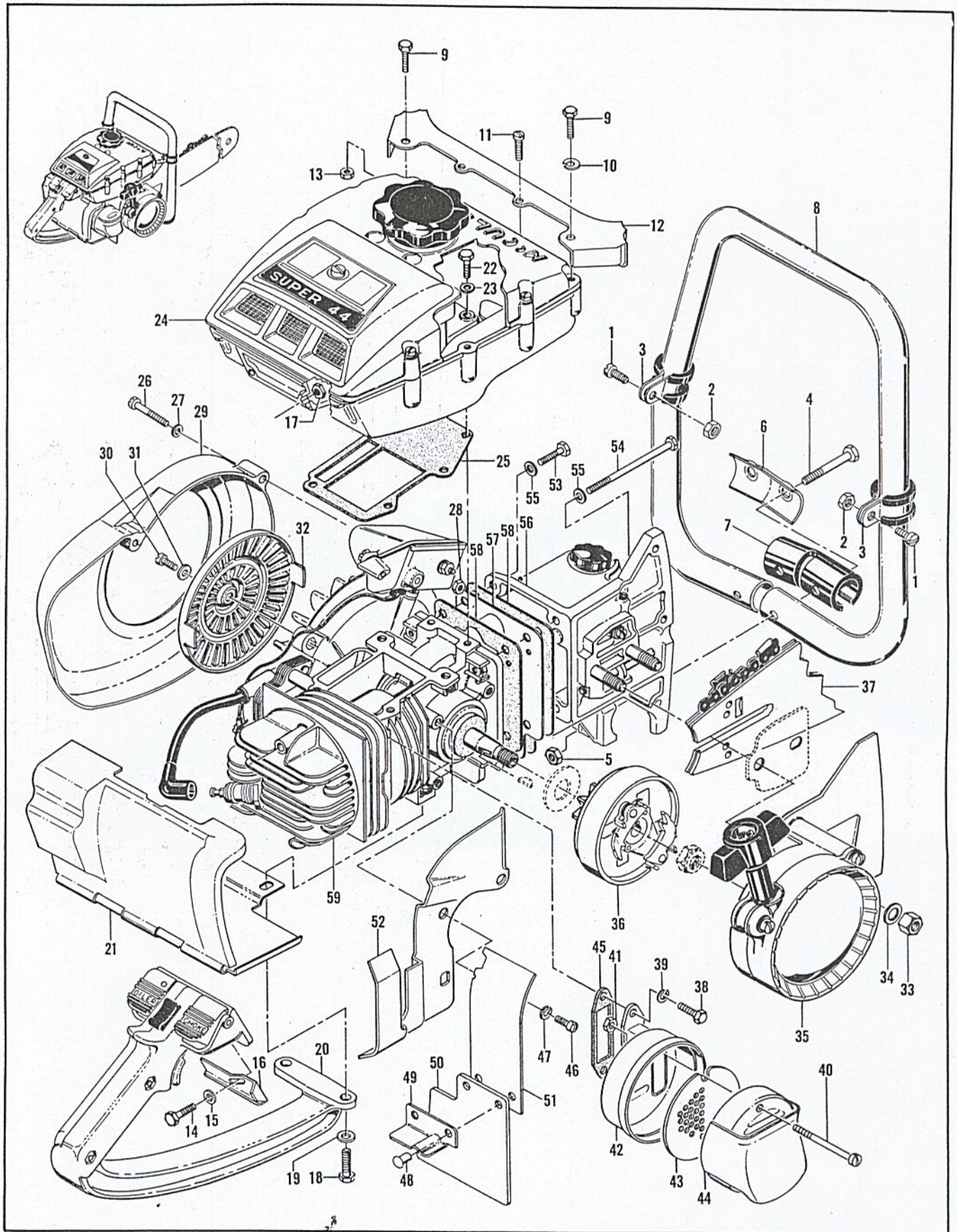


Figure 1. Engine Exploded View - General

FIGURE 1. ENGINE EXPLODED VIEW—GENERAL

Index No.	Part Number	Nomenclature	Units Per Assy
1-1	102143	Screw - Fil hd 10-24 x 3/4 in. lg	2
-2	100239	Nut - Hex 10-24	2
-3	103923	Clamp	2
-4	102125	Screw - Hex hd 1/4-20 x 1-3/4 in. lg	2
-5	101143	Nut - Hex 1/4-20	2
-6	51362	Clamp - Frame	1
-7	51364	Clamp - Insulator	1
-8	51308	Frame Assy - Saw	1
-9	101982	Screw - Hex hd 1/4-20 x 1 in. lg	2
-10	100246	Washer - Lock	1
-11	103725	Screw - Fil hd 10-24 x 1 in. lg (Sems)	2
-12	55029	Brace - Frame	1
-13	101143	Nut - Hex 1/4-20	1
-14	102763	Screw - Hex hd 10-24 x 3/4 in. lg	2
-15	102189	Washer - No. 10	2
-16	55114	Retainer - Cylinder head cover	1
-17	101191	Nut - Hex 10-24	2
-18	102121	Screw - Hex hd 1/4-20 x 7/8 in. lg	2
-19	100005	Washer - 1/4 in.	2
-20	51937	Handle and Control Assy (See figure 6)	1
-21	55018	Shroud Assy - Cylinder	1
-22	102763	Screw - Hex hd 10-24 x 3/4 in. lg	4
-23	103744	Washer - Sealing No. 10	4
-24	No Number	Fuel System Components (See figure 2)	1
-25	51481	Gasket - Tank to crankcase	1
-26	102145	Screw - Fil hd 10-24 x 1-1/4 in. lg	3
-27	102189	Washer - No. 10	3
-28	101191	Nut - Hex 10-24	2
-29	55017	Housing - Fan	1
-30	102500	Screw - Pan hd 10-24 x 1/2 in. lg	1
-31	101194	Washer - Lock	1
-32	51970	Guard - Sawdust	1
-33	103729	Nut - Hex 3/8-24	2
-34	100006	Washer - 3/8 in.	2
-35	55023	Starter Assy (See figure 3)	1
-36	No Number	Clutch Drive and Sprocket Assy (See figure 3)	1
-37		Bar and Chain Assy (See figure 4)	1
-38	102388	Bolt - Hex hd 10-24 x 5/8 in. lg	2
-39	103100	Washer	2
	51966	Muffler Assy	1
-40	103361	. Screw - Fil hd 10-24 x 1-5/8 in. lg	2
-41	101191	. Nut - Hex 10-24	2
-42	51975	. Bottom Assy - Muffler	1
-43	51968	. Baffle Assy - Muffler	1
-44	51979	. Top Assy - Muffler	1
-45	36093	Gasket - Muffler	1
-46	103998	Screw - Pan hd 1/4-20 x 5/8 in. lg	3
-47	100153	Washer - Lock	3
	51991	Guard Assy - Muffler	1
-48	103819	. Rivet - 0.187 dia x 5/16 in. lg	2
-49	55113	. Angle	1
-50	55112	. Deflector	1
-51	51990	. Guard - Muffler	1
-52	51989	Jacket - Cylinder	1
-53	103258	Screw - Hex hd 1/4-20 x 1-1/8 in. lg	2
-54	102127	Screw - Hex hd 1/4-20 x 20 x 3-1/4 in. lg	2
-55	100005	Washer	4
-56	51938	Oiler Housing Assy (See figure 4)	1
-57	51789B	Bottom - Crankcase	1
-58	51241A	Gasket - Bottom	2
-59	No Number	Powerhead Assy (See figure 5)	1

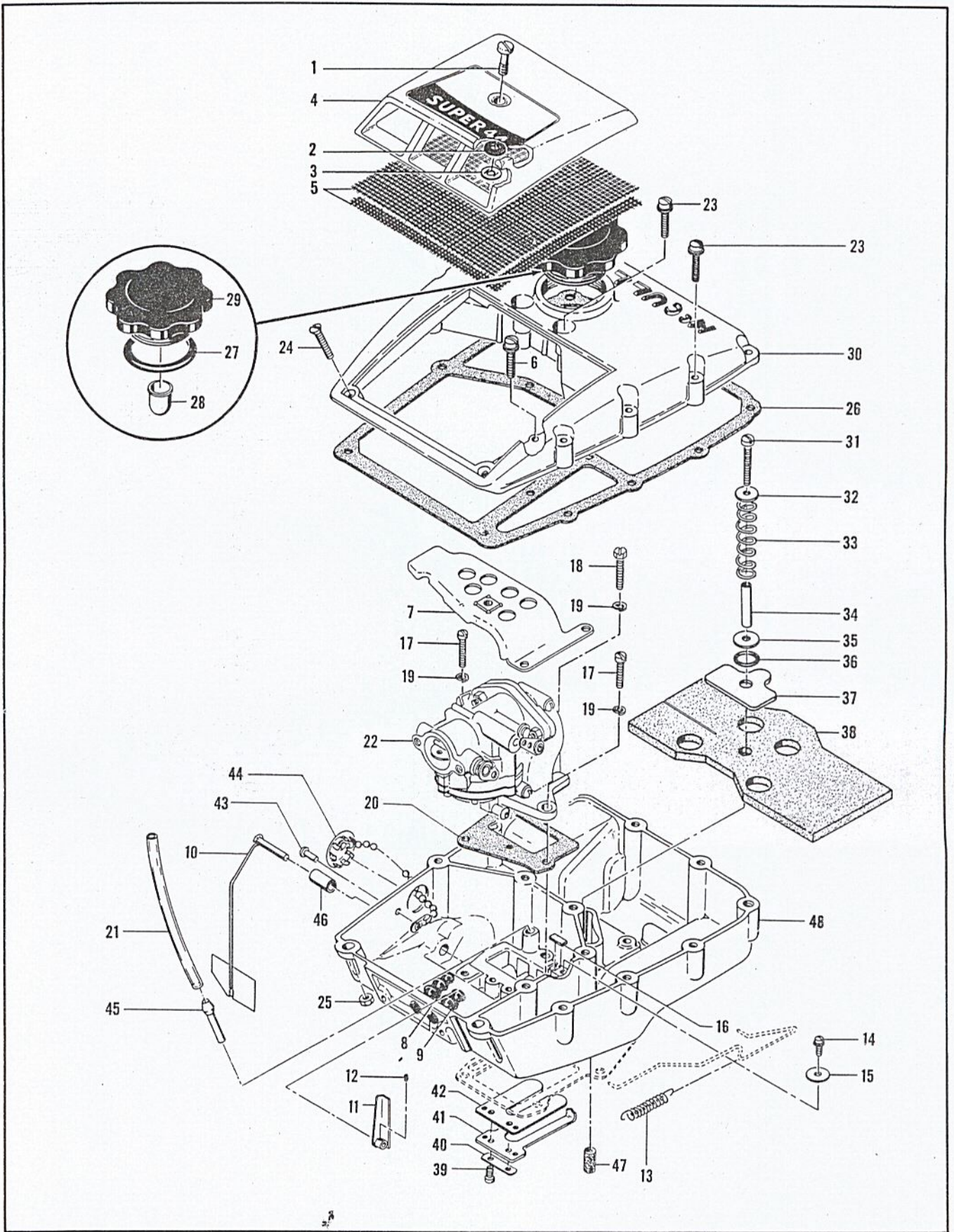


Figure 2. Fuel System Components

FIGURE 2. FUEL SYSTEM COMPONENTS

Index No.	Part Number	Nomenclature	Units Per Assy
2	55027	Cover Assy - Air cleaner	1
-1	55032	. Screw - Special	1
-2	55033	. Retainer - Screw	1
-3	103741	. Speed Nut	1
-4	55148	. Cover - Air cleaner	1
-5	51157	Screen - Air cleaner	2
-6	103859	Screw - Fil hd 10-24 x 3/4 in. lg (Sems)	2
-7	51840	Anchor Assy - Air cleaner	1
-8	51483	Grommet - Bellows type (Long)	1
-9	51561	Grommet - Bellows type (Short)	1
-10	51389A	Governor Arm Assy	1
-11	51558	Lever Assy - Governor arm	1
-12	103812	Screw - Set 8-32 x 3/16 in. lg	1
-13	36499	Spring - Throttle	1
-14	103928	Screw - Fil hd 8-32 x 1/2 in. lg (Sems)	1
-15	51395A	Retainer - Throttle rod	1
-16	51394	Felt - Throttle rod	1
-17	102764	Screw - Fil hd 10-24 x 1-1/4 in. lg	2
-18	103932	Screw - Hex hd 10-24 x 2-3/4 in. lg	1
-19	101194	Washer - Lock	3
-20	51357	Gasket - (Adapter to fuel tank)	1
-21	51577A	Hose - Fuel line	1
-22	51907	Carburetor and Adapter Assy (See figure 6)	1
-23	103858	Screw - Fil hd 10-24 x 1-1/4 in. lg (Sems)	7
-24	103579	Screw - Flat hd 10-24 x 1 in. lg	2
-25	101326	Nut - Hex 10-24	2
-26	51334A	Gasket - Fuel tank	1
	52136	Fuel Cap and Gasket Assy	1
-27	101348	. "O" Ring - Fuel cap	1
-28	47252A	. Valve	1
-29	52137	. Cap - Fuel	1
-30	51315B	Tank - Fuel (Top)	1
-31	101974	Screw - Fil hd 10-24 x 1-1/2 in. lg	1
-32	100289	Washer	1
-33	19236	Spring - Wick retaining	1
-34	51312	Tube - Wick holder	1
-35	100950	Washer	1
-36	101056	Packing - "O" ring	1
-37	51317	Clamp - Wick	1
-38	51309	Wick - Fuel pickup	1
-39	103748	Screw - Fil hd 8-32 x 1/2 in. lg	2
-40	51480	Lockplate	1
-41	51810	Guard - Reed valve	1
-42	51809	Valve - Reed	1
	51320A	Bottom Assy - Fuel tank	1
-43	102808	. Rivet	1
-44	51396	. Cover Assy - Adjustment hole	1
-45	103155	. Nipple	1
-46	103708	. Bushing	1
-47	18375A	. Screen - Drain	1
-48		. Fuel Tank - Bottom	1

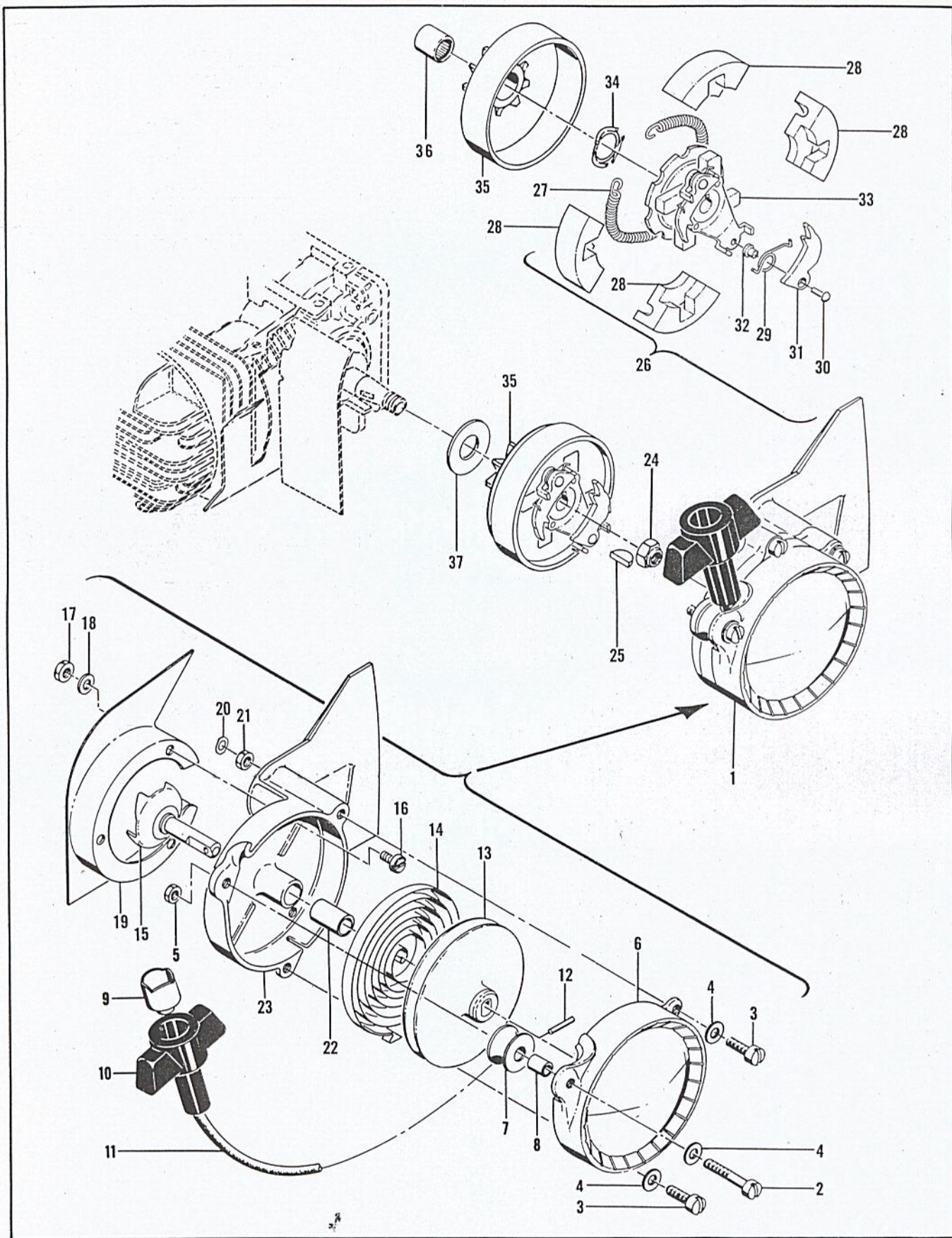


Figure 3. Starter and Clutch Assembly

FIGURE 3. STARTER AND CLUTCH ASSEMBLY

Index No.	Part Number	Nomenclature	Units Per Assy
3-1	55023	Starter Assy	1
-2	101284	. Screw - Fil hd 10-24 x 1-1/8 in. lg	1
-3	102141	. Screw - Fil hd 10-24 x 5/8 in. lg	2
-4	102189	. Washer - No. 10	3
-5	101191	. Nut - Hex 10-24	2
-6	55024	. Cover - Starter	1
-7	51138	. Pulley - Starter rope	1
-8	103536	. Bearing - Pulley	1
-9	24818	. Cup - Starter handle	1
-10	24822	. Handle - Starter	1
-11	51924	. Rope Assy - Starter	1
-12	103047	. Pin	1
-13	51848	. Drum - Starter	1
-14	51665	. Spring - Starter rewind	1
-15	51923	. Shaft Assy - Starter	1
	51263	. Base Assy - Starter	1
-16	103714	. . Screw - Pan hd 8-32 x 1/4 in. lg	3
-17	100251	. . Nut - Hex 8-32	3
-18	102814	. . Washer - Lock	3
-19	51459	. . Cover - Sawdust shield	1
-20	28935	. . Retainer	1
-21	101191	. . Nut - Hex 10-24	1
-22	103535	. . Bearing - Starter base	1
-23	51261	. . Base - Starter	1
-24	101391	Nut - Hex 3/8-24	1
-25	100199	Key - Woodruff	1
-26	51470A	Clutch Assy	1
-27	51468	. Spring - Shoe retaining	1
-28	51464	. Shoe - Clutch	4
-29	51910	. Spring - Pawl	2
-30	104070	. Rivet	2
-31	51914	. Pawl - Starter	2
-32	51911	. Sleeve - Starter pawl	2
-33	51917	. Rotor Assy - Clutch	1
-34	103718	Spring - Thrust	1
-35		Sprocket and Clutch Drum Assy (See figure 4 for pitch sizes)	1
-36	103688	. Bearing - Needle	1
-37	51420	Shroud - Inner sprocket	1

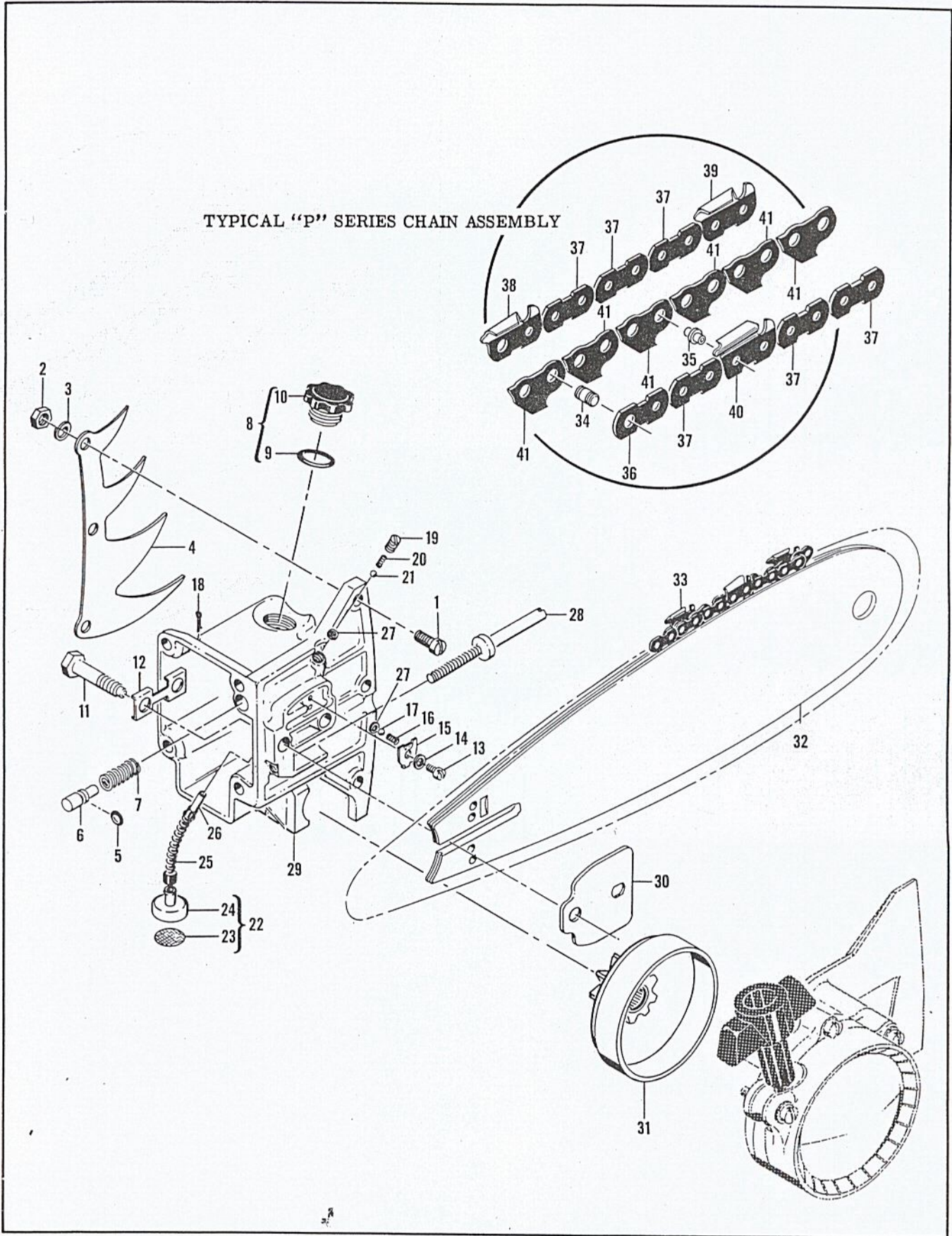


Figure 4. Chain Oiler, Bar and Chain

FIGURE 4. CHAIN OILER, BAR AND CHAIN

Index No.	Part Number	Nomenclature	Units Per Assy
4-1	102088	Screw - Fil hd 1/4-20 x 3/4 in. lg	3
-2	100152	Nut - Hex 1/4-20	3
-3	100153	Washer - Lock	3
-4	51443	Spike	1
	51938	Oiler Housing Assy	1
	51947	. Piston Assy - Oiler	1
-5	103198	. . Packing - "O" ring	1
-6	51940	. . Piston - Oiler	1
-7	51946	. Spring - Oiler	1
-8	47568	. Filler Cap and Gasket Assy	1
-9	101148	. . Gasket - "O" ring	1
-10	52388	. . Cap - Oil filler	1
-11	51423	. Screw - Blade clamp	2
-12	51439	. Lockplate - Oiler housing	1
-13	102219	. Screw - Fil hd 8-32 x 1/4 in. lg	1
-14	100057	. Washer - Lock	1
-15	51941	. Retainer	1
-16	51945	. Spring	1
-17	100549	. Ball - Steel	1
-18	100010	. Pin - Cotter	1
-19	51942	. Plug - Pipe 1/16 in.	1
-20	51944	. Spring - Valve	1
-21	100549	. Ball - Steel	1
-22	51505	. Weight Assy	1
-23	51506	. . Screen - Oil intake	1
-24	51509	. . Weight - Oil line	1
-25	28007	. Hose - Flexible	1
-26	28042	. Tube - Oiler	1
-27	51943	. Seat - Ball valve	2
-28	51441	. Screw - Blade adjustment	1
-29	51939	. Housing - Oiler	1
-30	51437	Spacer - Bar	1
-31	*51178	Sprocket and Clutch Drum Assy - 7/16 in. pitch (Blue)	1
	**51793	Sprocket and Clutch Drum Assy - 1/2 in. pitch (Green) (alternate)	1
	***51774	Sprocket and Clutch Drum Assy - 0.404 in. pitch (Red) (alternate)	1
-32	51403A	Bar - 12 in.	1
	51405A	Bar - 18 in. (alternate)	1
	51407A	Bar - 24 in. (alternate)	1
	51409A	Bar - 30 in. (alternate)	1
-33		Typical McCulloch "P" Series Chain Assy	1
-34		. Master Pin	
-35		. Shoulder Rivet	
-36		. Master Connecting Link	
-37		. Connecting Link	
-38		. Master Link - Cutter L.H.	
-39		. Cutter Tooth - L.H.	
-40		. Cutter Tooth - R.H.	
-41		. Spacer Link	

*Use only with 7/16 inch pitch chain.

**Use only with 1/2 inch pitch chain.

***Use only with 0.404 inch pitch chain.

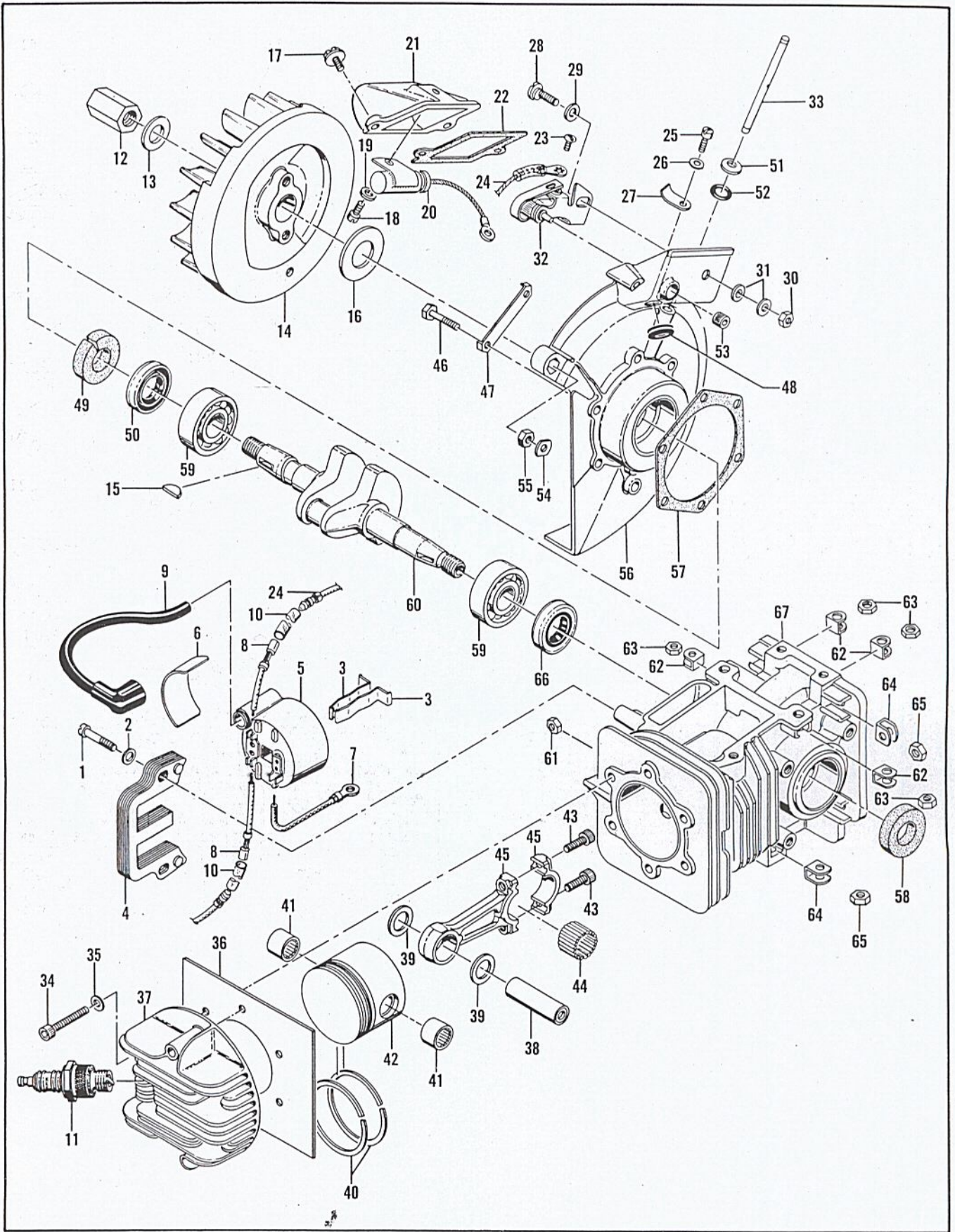


Figure 5. Powerhead Assembly

FIGURE 5. POWERHEAD ASSEMBLY

Index No.	Part Number	Nomenclature	Units Per Assy
5-1	101965	Screw - Fil hd 10-24 x 7/8 in.lg	2
-2	100003	Washer - No. 18	2
	55013	Coil and Lamination Assy	1
-3	51253	. Retainer - Coil	2
-4	51251	. Lamination Assy - Coil	1
-5	55014	. Coil and Terminal Assy	1
-6	18409A	. Instruction Plate - Coil adjustment	1
-7	101883	. Wire - Ground	1
-8	52064	. Wire Assy - Terminal	2
-9	52140	. Wire Assy - Spark plug	1
-10	51992	Sleeve	2
-11		Plug - Spark 14 MM	1
-12	19521	Nut - Special	1
-13	101270	Washer - 7/16 in.	1
-14	51203A	Flywheel Assy	1
-15	100199	Key - Woodruff	1
-16	51987	Shield - Dirt	1
-17	103464	Screw - Hex hd 10-24 x 3/4 in. lg (Sems)	2
-18	100362	Screw - Fil hd 8-32 x 3/8 in. lg	1
-19	100057	Washer - Lock	1
-20	100075	Condenser Assy	1
-21	51299A	Cover - Breaker box	1
-22	51242	Gasket - Breaker box	1
-23	101207	Screw - Rd hd 6-32 x 1/4 in. lg	1
-24	51492	Wire Assy - Primary	1
-25	100362	Screw - Fil hd 8-32 x 3/8 in. lg	1
-26	100057	Washer - Lock	1
-27	51959	Spring - Condenser	1
-28	24626	Screw - Eccentric	1
-29	100007	Washer - 5/16 in.	1
-30	101191	Nut - Hex 10-24	1
-31	100003	Washer - No. 18	2
-32	51958	Breaker Assy	1
-33	51346	Pushrod - Breaker	1
-34	101563	Screw - Socket hd 10-24 x 1-1/4 in. lg	6
-35	24236	Washer	6
-36	55012	Gasket - Cylinder head	1
-37	55011	Head - Cylinder	1
-38	51213	Pin - Piston	1
-39	51209	Washer - Thrust	2
	55007	Piston Assy	1
-40	55123	. Ring - Piston (Set of 2 rings - chrome top ring)	1
-41	101206	. Bearing - Needle	2
-42		. Piston	Order Piston Assembly #55007
	55009	Connecting Rod Assy	1
-43	101356	. Screw - Socket hd 10-32 x 5/8 in. lg	2
-44	102742	. Roller - Needle	24
-45	55010	. Rod - Connecting	1
-46	102763	Screw - Hex hd 10-24 x 3/4 in. lg	6
-47	51297	Lockplate	3
	52489	Crankcase Cover Assy	1
-48	101230	. Grommet	1
-49	36302	. Felt - Oiler pushrod	1
-50	102940	. Seal - Spring load	1
-51	51909	. Retainer	1
-52	103981	. Seal	1
-53	51960	. Bushing	1
-54	28935	. Retainer	1
-55	101191	. Nut - Hex 10-24	1
-56		. Cover - Crankcase	Order Crankcase Cover Assembly #52489
-57	51240	Gasket - Crankcase cover	1
-58	51235	Seal - Sprocket	1
-59	100824	Bearing (ND 3203)	2
-60	55005	Crankshaft	1
	55001	Cylinder Assy - Crankcase	1
-61	101326	. Nut - Hex 10-24	6
-62	28053	. Retainer - No. 10 nut	4
-63	101326	. Nut - Hex 10-24	4
-64	18556A	. Retainer - 1/4 in. nut	6
-65	101143	. Nut - Hex 1/4-20	6
-66	102940	. Seal - Crankcase	1
-67		. Cylinder - Crankcase	1

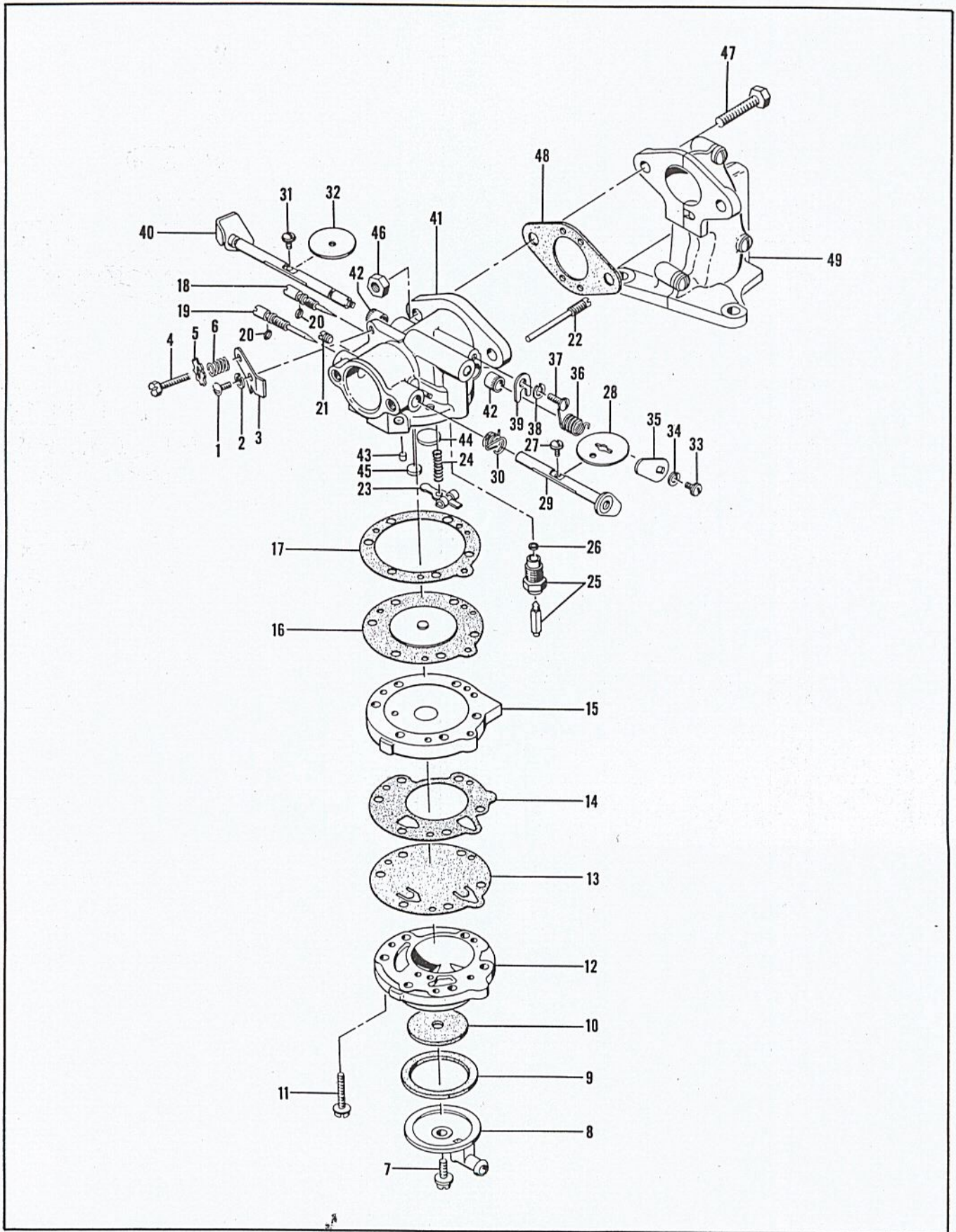


Figure 6. Carburetor and Adapter Assembly

FIGURE 6. CARBURETOR AND ADAPTER ASSEMBLY

Index No.	Part Number	Nomenclature	Units Per Assy
6	51907	Carburetor and Adapter Assy	1
	51548	. Carburetor Assy	1
-1	100362	. . Screw - Idle bracket retaining	1
-2	100252	. . Washer - Lock No. 8	1
-3	51706	. . Bracket - Idle screw	1
-4	103845	. . Screw - Hex hd 8-32 x 5/8 in. lg	1
-5	51549	. . Washer - Special	1
-6	51705	. . Spring - Idle speed regulating screw	1
-7	51701	. . Screw - Fuel strainer cover	1
-8	51599	. . Cover - Fuel strainer	1
-9	51704	. . Gasket - Fuel strainer cover	1
-10	51504	. . Element - Fuel filter	1
-11	51597	. . Screw - Fil hd 6-32 x 3/4 in. lg	6
-12	51596	. . Body - Fuel pump	1
-13	51595	. . Diaphragm - Fuel pump	1
-14	51594	. . Gasket - Fuel pump	1
-15	51592	. . Cover - Main fuel diaphragm	1
-16	51590	. . Diaphragm - Main fuel	1
-17	51591	. . Gasket - Main fuel diaphragm	1
-18	51702	. . Needle - Adjustment, idle mixture	1
-19	51712	. . Needle - Adjustment, main mixture	1
-20	51703	. . "O" Ring	2
-21	51589	. . Screw - Drain plug	1
-22	51710	. . Pin - Inlet lever fulcrum	1
-23	51709	. . Lever - Inlet control	1
-24	51711	. . Spring - Inlet control lever	1
-25	51707	. . Needle, Seat, and Gasket Assy	1
-26	51708	. . Gasket - Needle seat	1
-27	51721	. . Screw - Choke shutter (Sems)	1
-28	51587	. . Shutter - Choke	1
-29	51585	. . Shaft Assy - Choke	1
-30	51586	. . Spring - Torsion (choke shutter return)	1
-31	51721	. . Screw - Throttle shutter (Sems)	1
-32	51720	. . Shutter - Throttle	1
-33	51719	. . Screw - Throttle lever retaining	1
-34	100261	. . Washer - Lock No. 4	1
-35	51718	. . Lever - Throttle shaft	1
-36	51593	. . Spring - Torsion (throttle shutter return)	1
-37	51717	. . Screw - Throttle shaft clip	1
-38	100252	. . Washer - Lock No. 8	1
-39	51716	. . Clip - Throttle shaft	1
-40	51714	. . Shaft Assy - Throttle	1
-41	51588	. . Carburetor Body Assy (For service)	1
-42	51715	. . Bushing - Throttle shaft	2
-43	51582	. . Plug - Body channel cup	1
-44	51583	. . Plug - Body channel welch, 3/8 in.	1
-45	51584	. . Plug - Body channel welch, 1/4 in.	1
-46	103242	. . Nut - Hex 1/4-20	2
-47	100882	. . Screw - Hex hd 1/4-20 x .75 in. lg	2
-48	51161	. . Gasket - Carburetor-to-adapter	1
-49	51790	. . Adapter Assy - Carburetor	1

FIGURE 7 HANDLE AND CONTROL ASSEMBLY

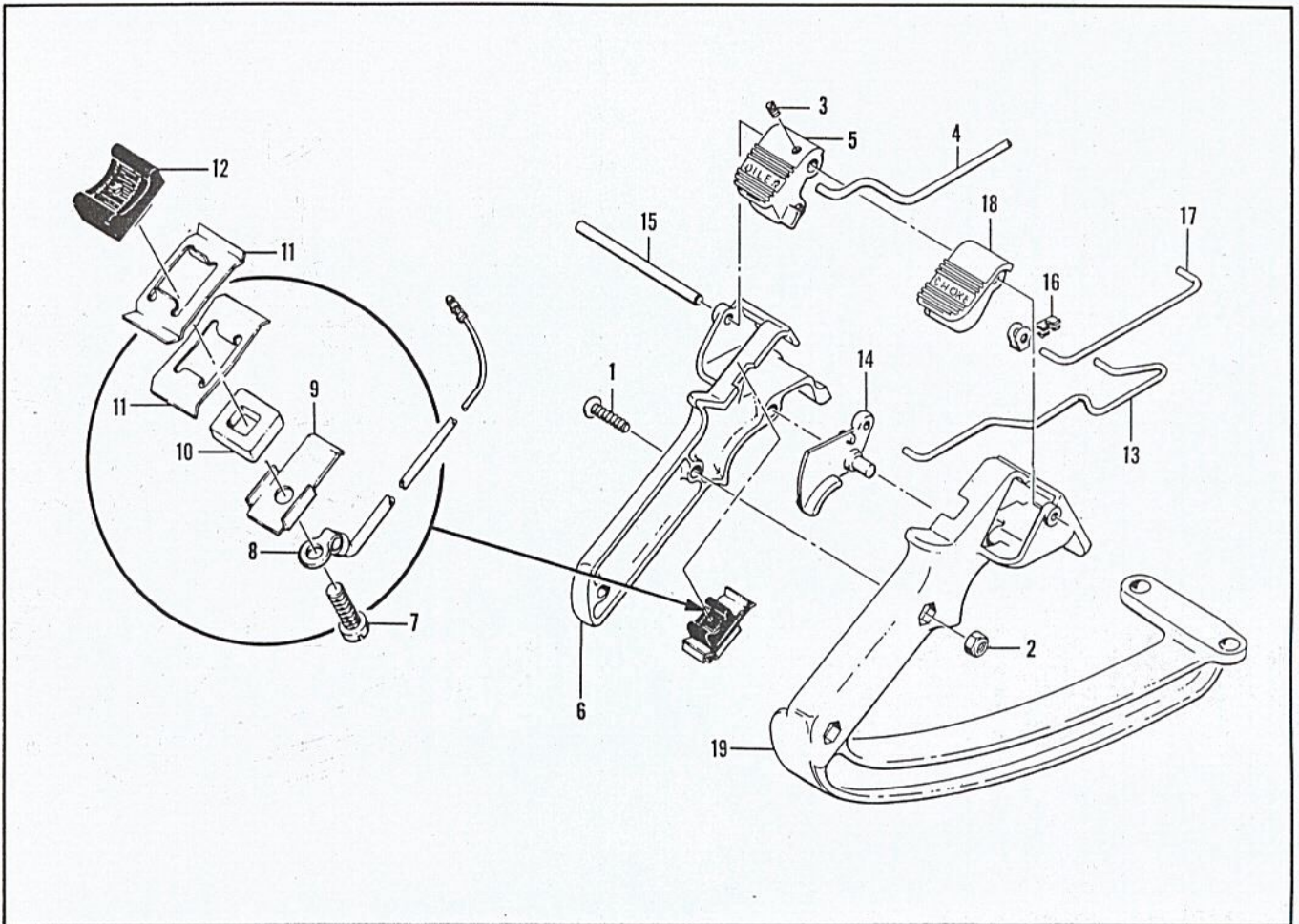


Figure 7. Handle and Control Assembly

Index No.	Part Number	Nomenclature	Units Per Assy
7	55142	Handle and Control Assy	1
-1	101060	. Screw - Oval hd 10-24 x 1 in. lg	2
-2	101191	. Nut - Hex 10-24	2
-3	103724	. Screw - Set	1
-4	51857	. Pushrod - Oiler	1
-5	51771	. Button - Oiler	1
-6	51266	. Handle - Left hand.....	1
-7	55140	. Switch Assy	1
-8	100362	. . Screw - Fil hd 8-32 x 3/8 in. lg	1
-9	51492A	. . Wire Assy - Ignition	1
-10	51279	. . Contact - Stop switch	1
-11	51555	. . Insulator	1
-12	51554	. . Detent - Stop switch	2
-13	51553	. . Button - Stop switch	1
-14	51559	. Pushrod - Throttle	1
-15	51267	. Trigger	1
-16	51344	. Shaft - Oiler	1
-17	36496	. Clip	1
-18	51551	. Pushrod - Choke	1
-19	51269	. Button - Choke	1
-19	51927	. Handle - Right hand	1