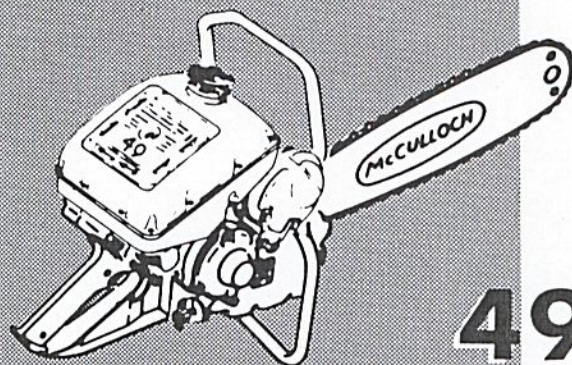


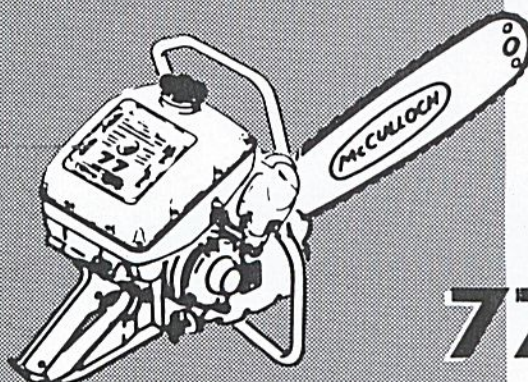
ILLUSTRATED PARTS LIST



49

This Master Illustrated Parts List gives the name, number and interchangeability between engines, of service and replacement parts which were used on or are presently available for installation on the listed chain saw models.

Information about the List and how to use it will be found on the back cover. Read the information before you start to use the List.



77



No. 56775

McCULLOCH CORPORATION
Los Angeles 45, California

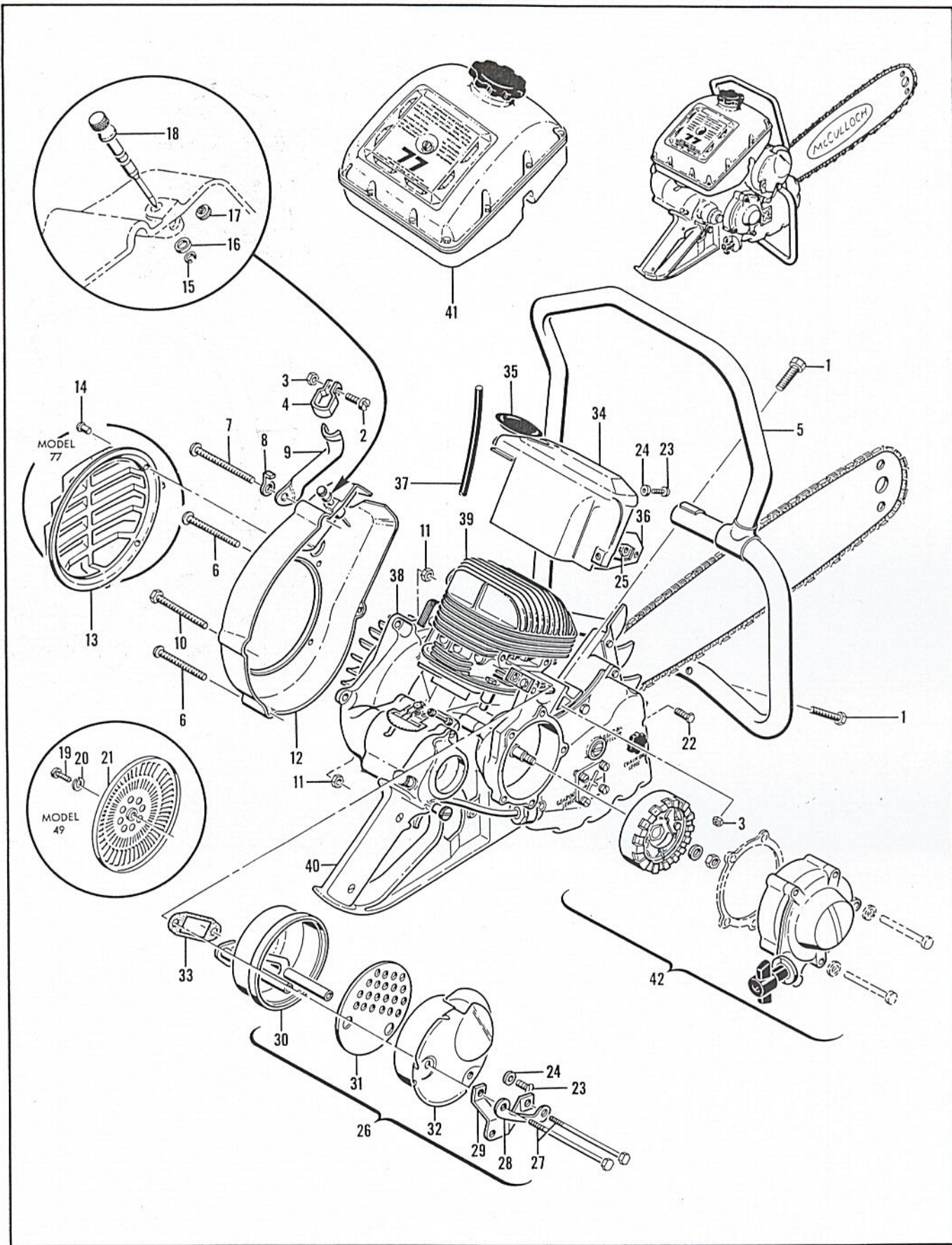


Figure 1. Model 49 and 77 Chain Saw Engines

FIGURE 1. MODEL 49 AND 77 CHAIN SAW ENGINES.

FIG. & INDEX NO.	PART NO.	DESCRIPTION							UNITS PER ASSY	USABLE ON CODE
		1	2	3	4	5	6	7		
Code: "A" indicates parts used on Model 49 engines.										
"B" indicates parts used on Model 77 engines.										
"All" indicates parts used on both model engines.										
1-1	102130	Screw - Hex hd 1/4-20 x 1-1/2 in. lg							3	All
-2	103266	Screw - Fil hd 1/4-20 x 3/4 in. lg							1	All
-3	101143	Nut - Hex 1/4-20							4	All
-4	18761A	Clamp							1	All
-5	28561A	Frame Assembly (Not available - Order Frame and Spacer Assembly #47333A and Support Assembly #28945A)							1	All
	47333A	Frame and Spacer Assembly							1	All
-6	101993	Screw - Rd hd 10-24 x 1-1/2 in. lg							2	All
-7	101994	Screw - Rd hd 10-24 x 1-3/4 in. lg							1	All
-8	36306	Lockplate							2	All
-9	28606A	Support Assembly - Handle bar (Use only with Frame Assembly #28561A)							1	All
	28945A	Support Assembly - Handle (Use only with Frame and Spacer Assembly #47333A)							1	All
-10	102125	Screw - Hex hd 1/4-20 x 1-3/4 in. lg							1	All
-11	101191	Nut - Hex 10-24							2	All
-12	28316B	Fan Housing Assembly							1	A
	47558B	Fan Housing and Guard Assembly							1	B
-13	28644B	Guard Assembly							1	B
-14	103819	Rivet - 0.187 dia. x 5/16 in. lg							4	B
	47573A	Fan Housing Assembly							1	B
-15	101913	Clip - Spring							1	All
-16	100004	Washer - Plain 1/4 in.							1	All
-17	28049	Spring - Ignition shut off							1	All
-18	28048A	Shaft - Ignition shut off							1	All
-19	101988	Screw - Fil hd 10-24 x 3/8 in. lg							1	A
-20	101194	Lockwasher - No. 10							1	A
-21	19007B	Guard - Saw dust							1	A
-22	100882	Bolt - Hex hd 1/4-20 x 3/4 in. lg							1	All
-23	101988	Screw - Fil hd 10-24 x 3/8 in. lg							2	All
-24	100003	Washer - Plain No. 10							2	All
-25	101191	Nut - Hex 10-24							1	All
-26	47282	Muffler Assembly							1	All
-27	102172	Screw - Hex hd 1/4-20 x 4 in. lg							2	All
-28	28341A	Lockplate							1	All
-29	28822	Bracket							1	All
-30	28505	Bottom - Muffler							1	All
-31	47595	Baffle Assembly - Muffler							1	All
-32	28798	Top - Muffler							1	All
-33	28501	Gasket - Exhaust							1	All
-34	28225A	Shroud - Cylinder							1	A
	28782	Shroud - Cylinder							1	B
-35	19696A	Cover Assembly - Spark plug							1	All
-36	28222A	Jacket - Cylinder							1	All
-37	47536	Hose - Fuel delivery							1	All
-38		Ignition System, Flywheel, Crankcase Cover and Rotary Valve (See figure 2)								All
-39		Cylinder, Piston and Gearcase (See figure 3)								All
-40		Crankcase Assembly (See figure 4)								All
-41		Fuel Tank Assembly (See figure 5)								All
		Carburetor Assembly (See figure 6)								All
-42		Pull Starter and Clutch Assembly (See figure 7)								All

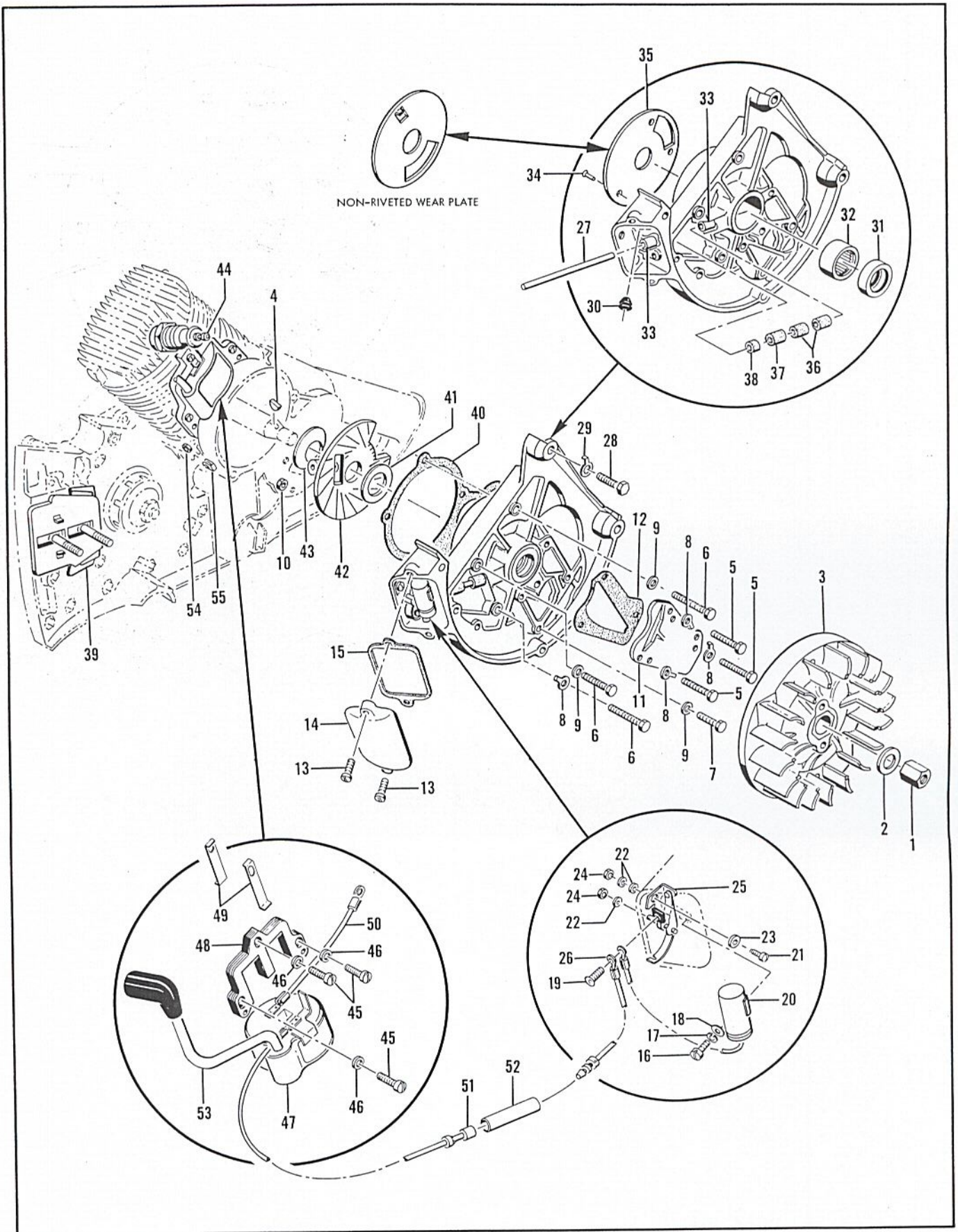


Figure 2. Ignition System, Flywheel, Crankcase Cover and Rotary Valve

FIGURE 2. IGNITION SYSTEM, FLYWHEEL, CRANKCASE COVER AND ROTARY VALVE.

FIG. & INDEX NO.	PART NO.	DESCRIPTION	UNITS PER ASSY	USABLE ON CODE
		1 2 3 4 5 6 7		
Code: "A" indicates parts used on Model 49 engines. "B" indicates parts used on Model 77 engines. "All" indicates parts used on both model engines.				
2-1	19521	Nut - Crankshaft	1	All
-2	101270	Washer	1	All
-3	28345	Flywheel Assembly	1	All
-4	100199	Key - Woodruff No. 404	1	All
-5	102760	Screw - Hex hd 10-24 x 1 in. lg	3	All
-6	102290	Screw - Hex hd 10-24 x 1-1/8 in. lg	3	All
-7	102289	Screw - Hex hd 10-24 x 3/4 in. lg	1	All
-8	28052	Lockplate	4	All
-9	100002	Washer	3	All
-10	101326	Nut - Hex 10-24	1	All
-11	28115	Cover - Venturi	1	A
	28756	Cover - Venturi	1	B
-12	28116	Gasket - Venturi cover	1	A
	28774	Gasket - Venturi cover	1	B
-13	103725	Screw - Machine	2	All
-14	19454A	Cover - Breaker	1	All
-15	19088A	Gasket - Breaker cover	1	All
-16	100696	Screw - Fil hd 8-32 x 5/8 in. lg	1	All
-17	100459	Lockwasher - No. 8	1	All
-18	100080	Washer - Plain	1	All
-19	101207	Screw - Rd hd 6-32 x 1/4 in. lg	1	All
-20	100075	Condenser	1	All
-21	24626	Screw	1	All
-22	100003	Washer - Plain No. 10	3	All
-23	100007	Washer	1	All
-24	101191	Nut - Hex 10-24	2	All
-25	19894A	Breaker Point Assembly	1	All
-26	28936	Wire Assembly - Breaker to coil	1	All
-27	19087	Push Rod - Breaker	1	All
-28	102128	Screw - Hex hd 1/4-20 x 1-1/4 in. lg	1	All
-29	36306	Lockplate	1	All
	28078	Cover Assembly - Crankcase	1	A
	28775	Cover Assembly - Crankcase (Not available - Order Cover and Bearing Assembly #47575)	1	B
-30	28322	. Grommet - Rubber	1	All
-31	101304	. Oil Seal	1	All
-32	102455	. Bearing - Needle	1	All
	28062	. Cover and Bushing Assembly	1	A
	28758	. Cover and Bushing Assembly (Not available - Order Cover and Bearing Assembly #47575)	1	B
-33	28565	. . Bushing - Push rod	2	All
-34	102217	. . Rivet	3	A
-35	19809	. . Wearplate - Crankcase	1	A
Replacement Cover and Bearing Assembly #47575				
	47575	Cover and Bearing Assembly	1	B
-30	28322	. Grommet - Rubber	1	B
-31	101304	. Oil Seal	1	B
-32	102445	. Bearing - Needle	1	B
		. Cover and Wearplate Assembly (Not available - Order Cover and Bearing Assembly #47575)	1	B
-33	28565	. . Bushing - Push rod	2	B
-35	47563	Wear plate (Not riveted)	1	B
-36	24321	Washer - Felt	2	All
-37	24321	Washer - Felt	1	A
-38	28092	Washer - Felt	1	A
-39	28066A	Protector - Crankcase	1	All
-40	28079B	Gasket - Crankcase cover	1	All

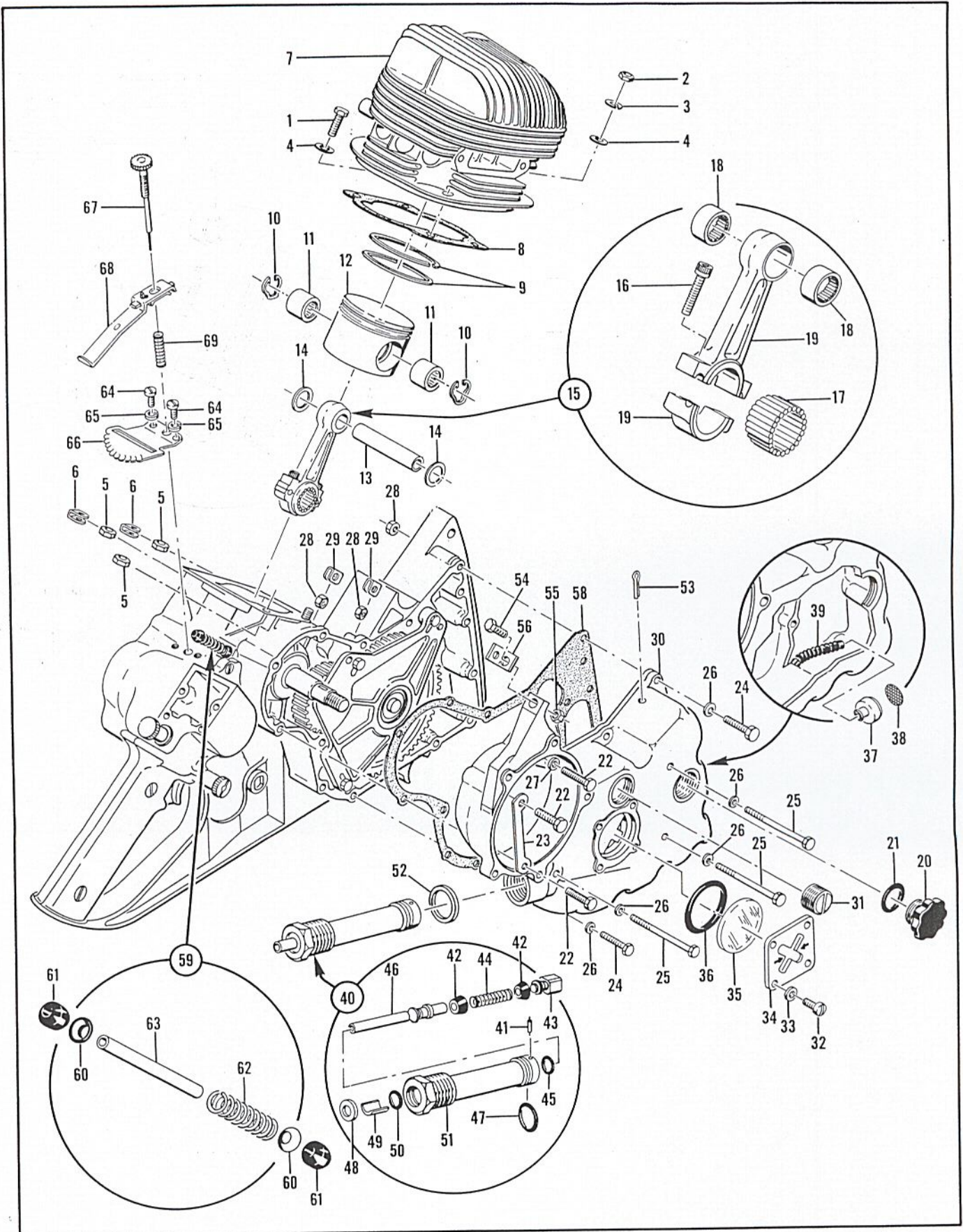


Figure 3. Cylinder, Piston and Gearcase

FIGURE 2. (CONT)

FIG. & INDEX NO.	PART NO.	DESCRIPTION							UNITS PER ASSY	USABLE ON CODE
		1	2	3	4	5	6	7		
2-41	101214	Washer							1	All
-42	28103	Valve Assembly - Rotary							1	A
	28313	Valve Assembly - Rotary							1	B
-43	11032	Spring - Valve							1	All
-44		Spark Plug and Gasket - 14 mm							1	All
-45	101965	Screw - Fil hd 10-24 x 7/8 in. lg							3	All
-46	100003	Washer - Plain No. 10							3	All
-47	19593C	Coil Assembly							1	All
-48	19032	Lamination Assembly							1	All
-49	19034	Retainer - Lamination							2	All
-50	101883	Wire - Ground							1	All
-51	52064	Wire Assembly - Terminal							1	All
-52	52066	Sleeve							1	All
-53	52547	Wire Assembly - Spark plug							1	All
-54	101326	Nut - Hex 10-24							1	All
-55	28053	Retainer - Nut							1	All

FIGURE 3. CYLINDER, PISTON AND GEARCASE.

FIG. & INDEX NO.	PART NO.	DESCRIPTION							UNITS PER ASSY	USABLE ON CODE
		1	2	3	4	5	6	7		
Code: "A" indicates parts used on Model 49 engines. "B" indicates parts used on Model 77 engines. "All" indicates parts used on both model engines.										
3-1	103486	Bolt - Hex hd 1/4-28 x 1 in. lg							3	All
-2	100248	Nut - Hex 1/4-28							1	All
-3	100246	Lockwasher							1	All
-4	100311	Washer - Plain 1/4 in. SAE							4	All
-5	100640	Nut - Lock 1/4-28							3	All
-6	18556A	Retainer - Nut							2	All
-7	28260	Cylinder Assembly							1	A
	28779	Cylinder Assembly							1	B
-8	28521A	Gasket - Cylinder							1	All
	28353A	Piston Assembly							1	A
	47580	Piston Assembly							1	B
-9	28886	. Piston Ring Set							1	A
	28809	. Piston Ring Set							1	B
-10	24336	. Ring - Retaining							2	A
	28597	. Ring - Retaining							2	B
-11	103475	. Bearing - Needle							2	B
-12		. Piston (Not available - Order correct Piston Assembly)							1	All
-13	28018	Pin - Piston							1	A
	28744A	Pin - Piston							1	B
-14	28507	Washer - Thrust							2	A
	28743	Washer - Piston pin							2	B
-15	28016A	Connecting Rod Assembly							1	A
	28795A	Connecting Rod Assembly							1	B
-16	101205	. Screw - Socket hd 10-32 x 3/4 in. lg							2	All
-17	100226	. Roller - Needle							24	All
-18	100300	. Bearing - Needle							2	A
-19		. Rod (Order correct Connecting Rod Assembly)							1	All
-20	52388	Cap - Oil Filler							1	All
-21	101148	Gasket - "O" ring							1	All
-22	102101	Screw - Hex hd 10-24 x 7/8 in. lg							3	All
-23	28051	Lockplate							1	All
-24	102291	Screw - Hex hd 10-24 x 1 in. lg							10	All
-25	102320	Screw - Hex hd 10-24 x 2-1/2 in. lg							3	All
-26	100003	Washer							13	All
-27	100289	Washer							1	All
-28	101326	Nut - Hex 10-24							15	All

FIGURE 3. (CONT)

FIG. & INDEX NO.	PART NO.	DESCRIPTION							UNITS PER ASSY	USABLE ON CODE
		1	2	3	4	5	6	7		
3-29	28053								2	All
-30	47533									
									1	All
-31	101190								1	All
-32	101991								4	All
-33	101194								4	All
-34	28074								1	All
-35	19857								1	All
-36	102098								1	All
	51505								1	All
-37	51509								1	All
-38	51506								1	All
-39	28007								1	All
-40	47571								1	All
-41	24106								1	All
-42	24104								2	All
-43	24105A								1	All
-44	28215								1	All
-45	101258								1	All
-46	24103A								1	All
-47	101218								1	All
-48	100950								1	All
-49	24108								1	All
-50	101056								1	All
-51	47553A								1	All
-52	24120								1	All
-53	100010								1	All
-54	100882								1	All
-55	101143								1	All
-56	47521								1	All
-57	47241								1	All

Replacement Gear Case and Pump Assembly #47581

-30	47581								1	All
-20	52388								1	All
-21	101148								1	All
-28	101191								4	All
-29	28935								4	All
-31	101190								1	All
-32	101991								4	All
-33	101194								4	All
-34	28074								1	All
-35	19857								1	All
-36	102098								1	All
	51505								1	All
-37	51509								1	All
-38	51506								1	All
-39	28007								1	All
-40	47571								1	All
-41	24106								1	All
-42	24104								2	All
-43	24105A								1	All
-44	28215								1	All
-45	101258								1	All
-46	24103A								1	All
-47	101218								1	All
-48	100950								1	All
-49	24108								1	All
-50	101056								1	All
-51	47553A								1	All
-52	24120								1	All
-53	100010								1	All
-57	47241								1	All

FIGURE 3. (CONT)

FIG. & INDEX NO.	PART NO.	DESCRIPTION							UNITS PER ASSY	USABLE ON CODE
		1	2	3	4	5	6	7		
3-58	28120	Gasket - Gear case							1	All
-59	19523	Tube Assembly							1	All
-60	19286	. Washer							2	All
-61	19285	. Seal - Pump							2	All
-62	19287	. Spring							1	All
-63	19258	. Tube							1	All
-64	101988	Screw - Fil hd 10-24 x 3/8 in. lg							2	All
-65	101194	Lockwasher - No. 10							2	All
-66	19250	Detent							1	All
-67	28921	Needle Valve Assembly							1	All
-68	28923	Lever Assembly							1	All
-69	19367	Spring - Main jet							1	All

FIGURE 4. CRANKCASE ASSEMBLY.

FIG. & INDEX NO.	PART NO.	DESCRIPTION							UNITS PER ASSY	USABLE ON CODE
		1	2	3	4	5	6	7		
Code: "A" indicates parts used on Model 49 engines.										
"B" indicates parts used on Model 77 engines.										
"All" indicates parts used on both model engines.										
4-1	101977	Screw - Fil hd 1/4-20 x 3/4 in. lg							2	All
-2	101143	Nut - Hex 1/4-20							2	All
-3	19752	Spike							1	All
-4	100682	Nut - Hex 5/16-24							2	All
-5	100440	Washer - 5/16 in.							2	All
-6	19682	Lockplate Assembly - Adjusting							1	All
-7	100010	. Pin - Cotter 0.06 x 1/2 in. lg							1	All
-8	102022	. Nut - 5/16-24							1	All
-9	24260	. Washer - Spring							1	All
-10	102193	. Screw - Lockplate adjusting							1	All
-11	100007	. Washer							1	All
-12	19708	. Nut - Adjusting							1	All
-13	19681	. Body - Lockplate							1	All
-14	102101	Screw - Hex hd 10-24 x 7/8 in. lg							3	All
-15	28052	Lockplate							3	All
-16	28003	Plate - Shaft support							1	A
	28720	Plate - Shaft support							1	B
-17	101179	Nut - Hex 7/16-20							1	All
-18	19733A	Shroud - Sprocket							1	All
-19		Sprocket							1	All
-20	100256	Key							1	All
-21	19278	Shroud - Sprocket							1	All
-22	103576	Screw - Flat hd 10-24 x 1/2 in. lg							3	All
-23	28040	Plate - Sprocket bearing retainer							1	All
-24	102084	Bearing							1	All
-25	28008	Sprocket Shaft Gear Assembly							1	A
	*28575	Shaft Assembly - Sprocket							1	B
-26	101794	. Ring - Retaining							1	All
-27	101376	. Bearing - Ball							1	All
-28	28781	Gear Assembly - Idler							1	All
-29	28780	. Gear - Idler							1	All
-30	102083	. Bearing							1	All
-31	28033	. Ring - Retainer							1	All
-32	28327	Sleeve - Venturi small							1	All
-33	19845	Spring							1	All
-34	28326	Sleeve - Venturi large							1	All
-35	19846	Spring							1	All

*Optional gear set available.

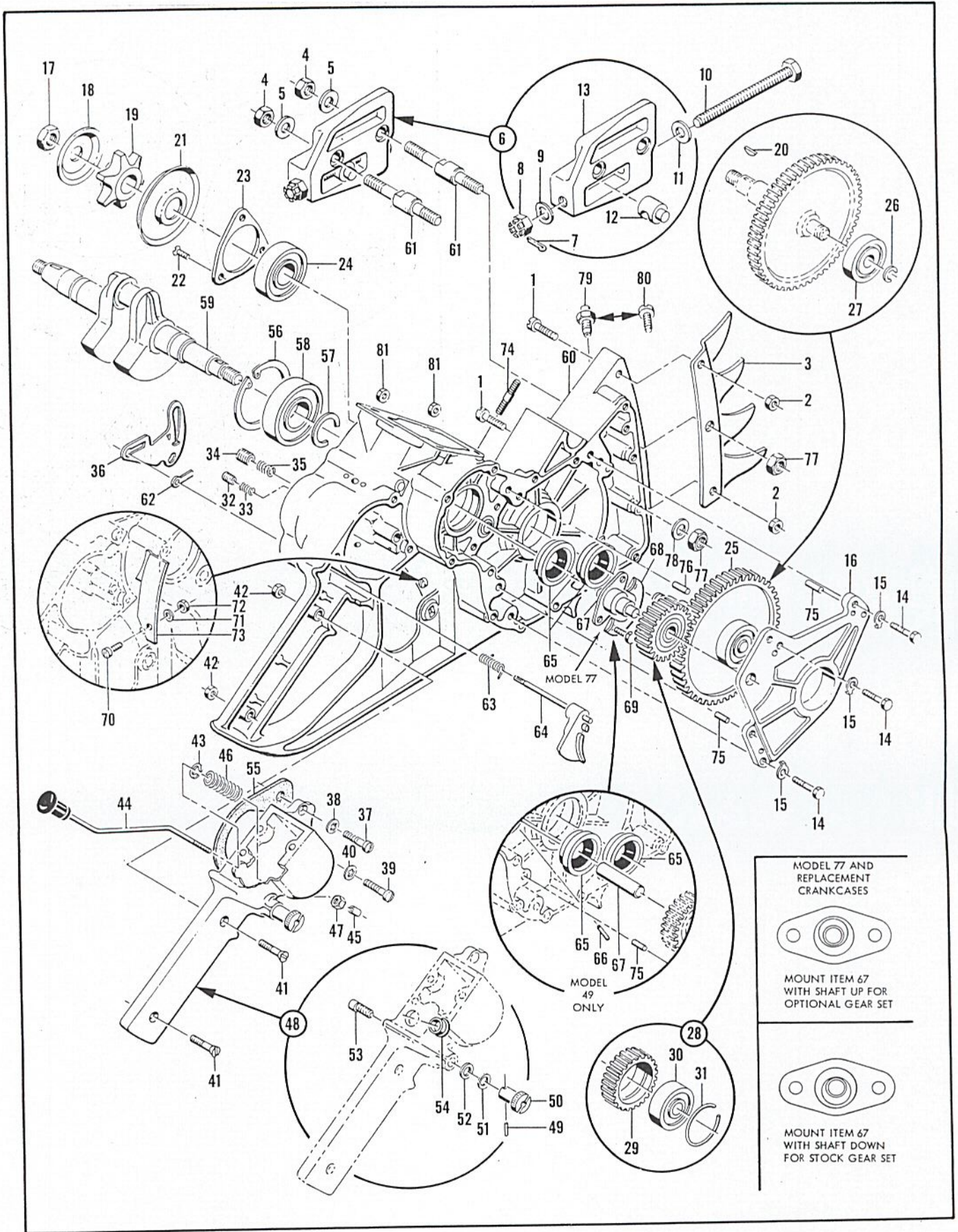


Figure 4. Crankcase Assembly

FIGURE 4. (CONT)

FIG. & INDEX NO.	PART NO.	DESCRIPTION	UNITS PER ASSY	USABLE ON CODE
		1 2 3 4 5 6 7		
4-36	47205A	Gate - Throttle	1	All
-37	100478	Screw - Fil hd 10-24 x 3/4 in. lg	1	All
-38	101194	Lockwasher - No. 10	1	All
-39	103297	Screw - Fil hd 1/4-28 x 1 in. lg	1	All
-40	100153	Lockwasher - 1/4 in.	1	All
-41	101060	Screw - Oval hd 10-24 x 1 in. lg	2	All
-42	101191	Nut - Hex 10-24	2	All
-43	101426	Ring - Snap	1	All
-44	28013	Oil Pump Push Rod Assembly	1	All
-45	24584	Sleeve - Push rod	1	All
-46	24313	Spring - Push rod	1	All
-47	100722	Nut - Stop 6-32	1	All
-48	47566	Cover Assembly - Handle	1	All
-49	100954	. Pin - Groove	1	All
-50	19288	. Knob - Throttle stop	1	All
-51	19289	. Washer - Spring	1	All
-52	100003	. Washer - Plain No. 10	1	All
-53	19279	. Shaft - Throttle stop	1	All
-54	28057	. Sleeve - Push rod	1	All
-55	28903	Gasket	1	All
-56	100684	Ring - Snap	1	All
-57	101173	Ring - Retaining	1	All
-58	100683	Bearing - Ball	1	All
-59	19025B	Crankshaft	1	A
	28820	Crankshaft	1	B
-60	47569B	Crankcase Assembly (Not available - Order Crankcase Assembly #47403)	1	A
	47570	Crankcase Assembly (Not available - Order Crankcase Assembly #47403)	1	B
-61	19416A	. Key - Saw bar	2	All
-62	28118	. Key - Throttle shaft	1	All
-63	19185	. Spring - Trigger	1	All
-64	28067	. Trigger Assembly	1	All
-65	102939	. Seal - Oil	2	All
-66	102838	. Pin - Groove	1	A
-67	28041A	. Shaft - Idler gear	1	A
	28717	. Shaft - Idler gear	1	B
-68	28662	. Lockplate	1	B
-69	28667	. Screw - Idler shaft	2	B
-70	103469	. Screw - Hex hd 1/4-20 x 3/8 in. lg	1	All
-71	100003	. Washer - Plain No. 10	1	All
-72	101191	. Nut - Hex 10-24	1	All
-73	19727B	. Chain Guard	1	All
-74		. Stud	1	A
	103496	. Stud	1	B
-75	102110	. Pin - Dowel	2	All
-76	102110	. Pin - Dowel	1	B
-77	100682	. Nut - Hex 5/16-24	2	All
-78	100440	. Washer - 5/16 in.	1	All
-79	28054	. Nozzle - Oiler	1	All

Replacement Crankcase Assembly #47403

-60	47403	Crankcase Assembly	1	All
-61	19416A	. Key - Saw bar	2	All
-62	28118	. Key - Throttle shaft	1	All
-63	19185	. Spring - Trigger	1	All
-64	28067	. Trigger Assembly	1	All
-65	102939	. Seal - Oil	2	All
-67	28717	. Shaft - Idler gear	1	All
-68	28662	. Lockplate	1	All
-69	28667	. Screw - Idler shaft	2	All

49, 77 ENGINES

FIGURE 4. (CONT)

FIG. & INDEX NO.	PART NO.	DESCRIPTION							UNITS PER ASSY	USABLE ON CODE
		1	2	3	4	5	6	7		
4-70	103469	.							1	All
-71	100003	.							1	All
-72	101191	.							1	All
-73	19727B	.							1	All
-74	103496	.							1	All
-75	102110	.							2	All
-76	102110	.							1	All
-77	100682	.							2	All
-78	100440	.							2	All
-79	28054	.							1	All
	100010	.							1	All
	103295	.							1	All
-80	*100590	.							1	All
-81	101326	.							2	All

FIGURE 5. FUEL TANK ASSEMBLY.

FIG. & INDEX NO.	PART NO.	DESCRIPTION							UNITS PER ASSY	USABLE ON CODE
		1	2	3	4	5	6	7		
Code: "A" indicates parts used on Model 49 engines. "B" indicates parts used on Model 77 engines. "All" indicates parts used on both model engines.										
5-1	52136A	.							1	All
-2	47252A	.							1	All
-3	101348	.							1	All
-4	47249	.							1	A
	47549	.							1	B
-5	51351	.							1	All
-6	103741	.							1	All
-7	47250	.							1	A
	47550	.							1	B
Replacement Cover Assembly #55484										
-4	55484	.							1	B
-5	55032A	.							1	B
-6	103741	.							1	B
-7		.							1	B
-8	55498	.							2	All
-9	102145	.							11	All
-10	101974	.							1	All
-11	101194	.							12	All
-12	102126	.							1	A
	102764	.							1	B
-13	47519	.							1	All
-14	47509	.							1	All
-15	47522	.							1	All
-16	47207	.							1	A
	47514	.							1	B
-17	47512	.							1	All
-18	47517	.							1	All

*This screw replaces the oiler nozzle #28054 when the plunger bow or bow saw attachment is used.

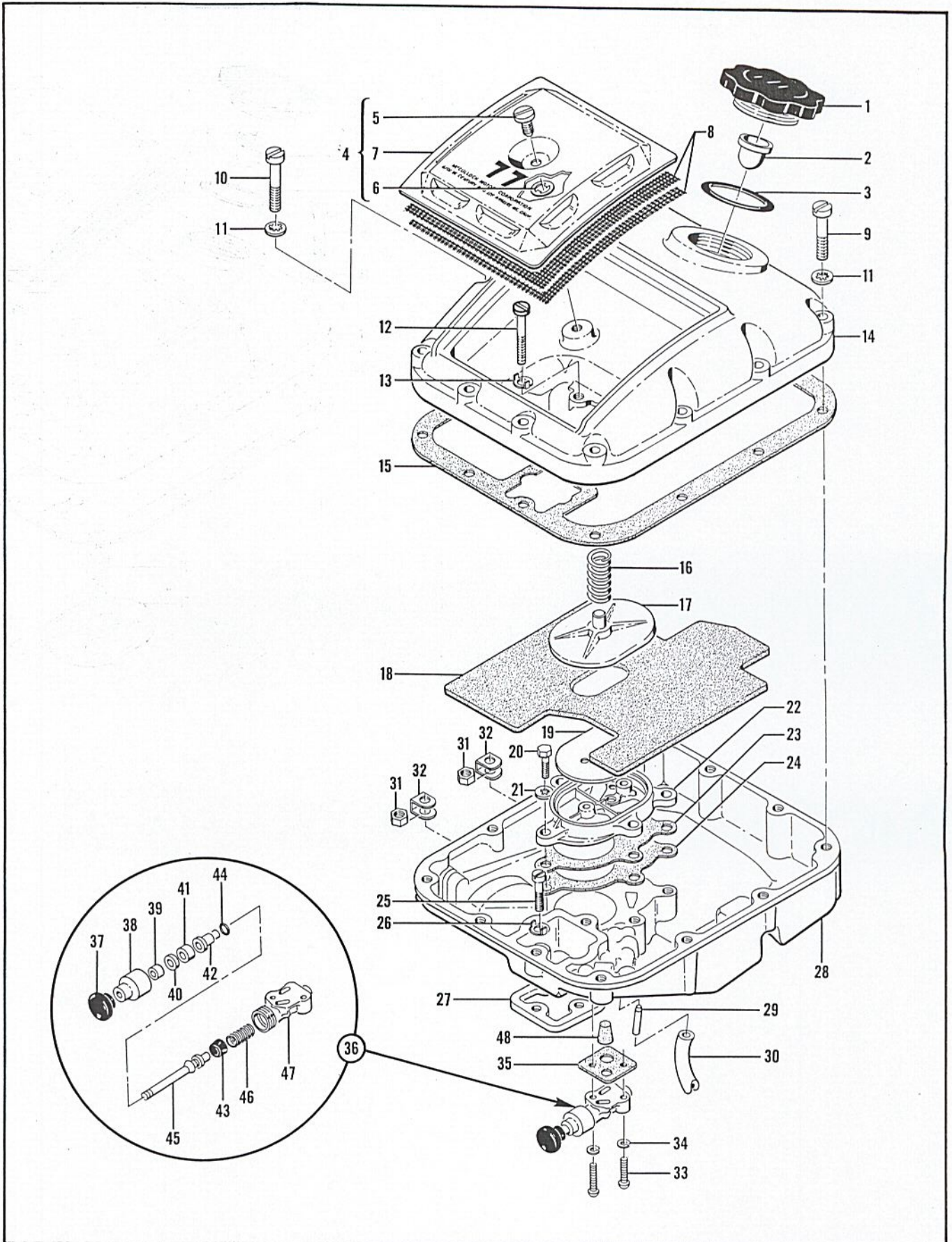


Figure 5. Fuel Tank Assembly

FIGURE 5. (CONT)

FIG. & INDEX NO.	PART NO.	DESCRIPTION							UNITS PER ASSY	USABLE ON CODE
		1	2	3	4	5	6	7		
5-19	47637	Filter							1	All
-20	102388	Screw - Hex hd 10-24 x 5/8 in. lg							5	All
-21	101194	Lockwasher - No. 10							5	All
-22	47510	Cover - Fuel pump							1	All
-23	47516	Valve - Fuel pump							1	All
-24	47594	Gasket							1	All
-25	102134	Screw - Fil hd 10-24 x 7/8 in. lg							2	All
-26	47519	Lockplate							2	All
-27	47518A	Seal - Fuel tank							1	All
-28	47529A	Bottom Assembly - Fuel tank							1	All
-29	47523	Tube - Fuel hose							1	All
-30	47536	Hose - Fuel delivery							1	All
-31	101143	Nut - Hex 1/4-20							2	All
-32	18556A	Retainer - Nut							2	All
-33	101992	Screw - Rd hd 10-24 x 7/8 in. lg							2	All
-34	100240	Lockwasher							2	All
	19397B	Primer and Gasket Assembly							1	All
-35	19396A	Gasket - Primer							1	All
-36		Primer Assembly (Not available - Order Primer and Gasket Assembly #19397B)							1	All
-37	19970A	Button - Primer							1	All
-38	19969	Packing Nut - Primer							1	All
-39	19968	Seal - Felt							1	All
-40	102523	Washer							1	All
-41	19967	Packing - Primer							1	All
-42	19966	Sleeve - Primer							1	All
-43	24104	Cup - Packing							1	All
-44	101258	"O" Ring							1	All
-45	19965	Plunger - Primer							1	All
-46	11086	Spring							1	All
-47	19962A	Body Assembly - Primer							1	All
-48	28091	Filter - Fuel tank bottom							1	All

FIGURE 6. CARBURETOR ASSEMBLY.

FIG. & INDEX NO.	PART NO.	DESCRIPTION							UNITS PER ASSY	USABLE ON CODE
		1	2	3	4	5	6	7		
6-1	102101	Screw - Hex hd 10-24 x 7/8 in. lg							1	All
-2	100003	Washer - Plain No. 10							1	All
-3	101191	Nut - Hex 10-24							1	All
-4	19239	Screw							1	All
-5	101075	Nut - Hex 10-32							1	All
-6	100296	Washer - No. 6							1	All
-7	19183	Spring							1	All
-8	19697	Gasket - Carburetor to crankcase							1	All
-9	28959	Carburetor Diaphragm Chamber Assembly (Not available - Order Carburetor Assembly #47393)							1	All
-10	100258	Screw							1	All
-11	28952	Inlet Assembly							1	All
-12	28954	Seal Inlet Assembly							1	All
-13	47557	Screw - Idle adjustment							1	All
-14	102155	"O" Ring							1	All
-15	101965	Screw - Fil hd 10-24 x 7/8 in. lg							4	All
-16	47555	Cover Assembly - Carburetor (Not available - Order Carburetor Cover #19615A)							1	All
-17	47556	Filter (Obsolete part - Order Carburetor Cover #19615A)							1	All

Code: "A" indicates parts used on Model 49 engines.
 "B" indicates parts used on Model 77 engines.
 "All" indicates parts used on both model engines.

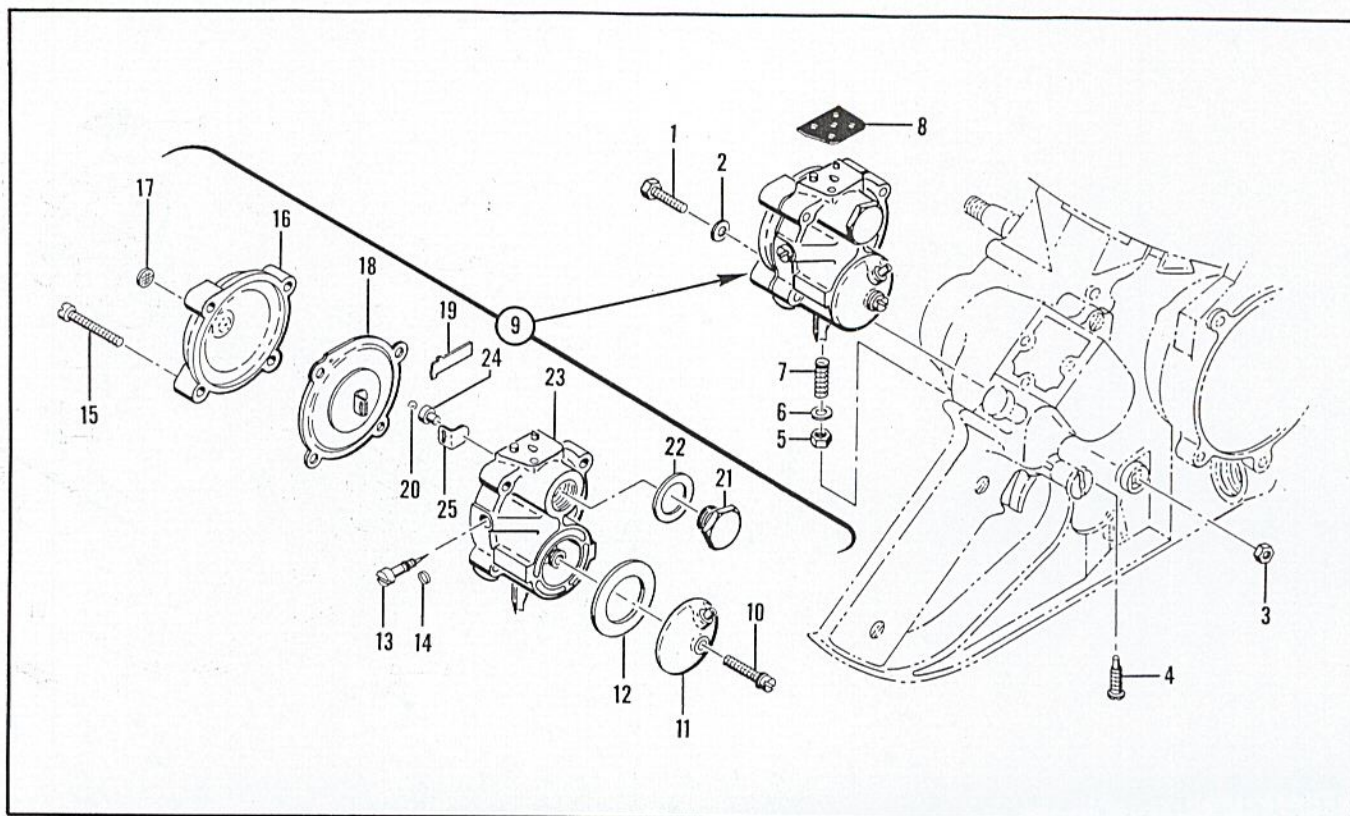


Figure 6. Carburetor Assembly

FIGURE 6. (CONT)

FIG. & INDEX NO.	PART NO.	1	2	3	4	5	6	7	UNITS PER ASSY	USABLE ON CODE
6-18	28696A	.	Diaphragm and Gasket Assembly						1	All
-19	19626	.	Lever - Diaphragm						1	All
-20	100302	.	Ball						1	All
-21	19670	.	Body Assembly - Shut off valve						1	All
-22	19673	.	Washer						1	All
-23	28949A	.	Body Assembly - Carburetor						1	All
-24	28737	.	Seat Assembly - Check valve						1	All
-25	19625	.	Hinge - Diaphragm						1	All

Replacement Carburetor Assemblies #47559A and #47393

Note: Carburetor Assembly #47559A was also used on these models.

-9	47559A		Carburetor Assembly (Not available - Order Carburetor Assembly #47393)						1	All
	47393		Carburetor Assembly						1	All
-10	100258	.	Screw						1	All
-11	28952	.	Inlet Assembly						1	All
-12	28954	.	Seal Inlet Assembly						1	All
-13	47557	.	Screw - Idle adjustment						1	All
-14	102155	.	"O" Ring						1	All
-15	101965	.	Screw - Fil hd 10-24 x 7/8 in. lg						4	All
-16	19615A	.	Cover - Carburetor						1	All
-18	28686A	.	Diaphragm and Gasket Assembly						1	All
-19	19626	.	Lever - Diaphragm						1	All
-20	100302	.	Ball						1	All
-21	19670	.	Body Assembly - Shut off valve						1	All
-22	19673	.	Washer						1	All
-23	28949A	.	Body Assembly - Carburetor						1	All
-24	28737	.	Seat Assembly - Check valve						1	All
-25	19625	.	Hinge - Diaphragm						1	All

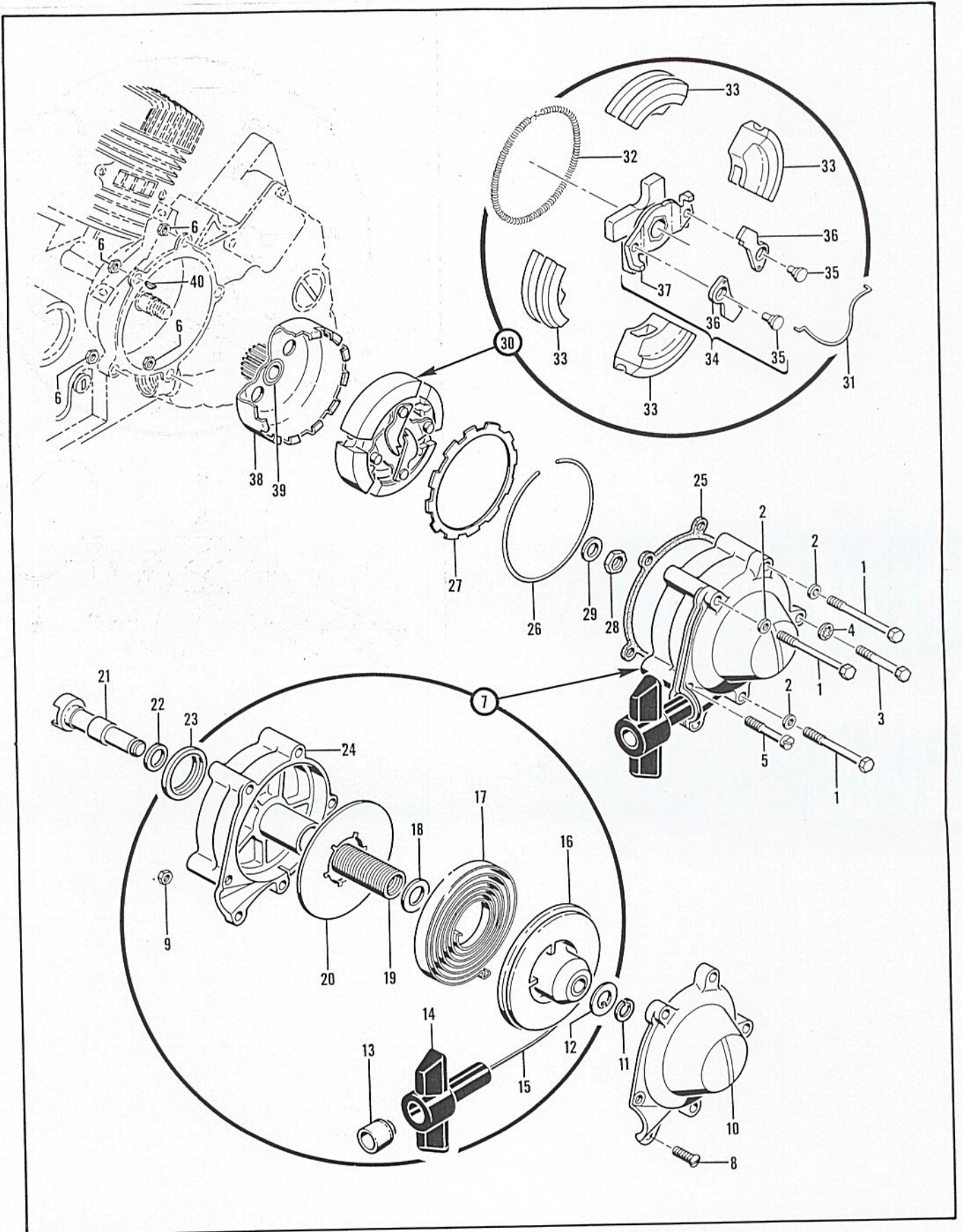


Figure 7. Pull Starter and Clutch Assembly

FIGURE 7. PULL STARTER AND CLUTCH ASSEMBLY.

FIG. & INDEX NO.	PART NO.	DESCRIPTION	UNITS PER ASSY	USABLE ON CODE
		1 2 3 4 5 6 7		
		Code: "A" indicates parts used on Model 49 engines.		
		"B" indicates parts used on Model 77 engines.		
		"All" indicates parts used on both model engines.		
7-1	102320	Screw - Hex hd 10-24 x 2-1/2 in. lg	3	All
-2	100003	Washer - Plain No. 10	3	All
-3	103356	Screw - Hex hd 10-24 x 2-1/8 in. lg	1	All
-4	101194	Lockwasher - No. 10	1	All
-5	101974	Screw - Fil hd 10-24 x 1-1/2 in. lg	1	All
-6	101191	Nut - Hex 10-24	4	All
-7	19550A	Starter Assembly	1	All
-8	102762	. Screw - Rd hd mach 10-24 x 1/2 in. lg	1	All
-9	101191	. Nut - Hex 10-24	1	All
-10	19551A	. Cover - Starter	1	All
-11	101795	. Ring - Retaining	1	All
-12	24488	. Washer	1	All
-13	24818	. Cup - Starter handle	1	All
-14	24822	. Handle - Starter	1	All
-15	28716	. Rope - Starter Assembly	1	All
-16	28715	. Drum - Starter	1	All
-17	28842	. Spring - Rewind	1	All
-18	19568	. Washer	1	All
-19	19549	. Spring - Starter clutch	1	All
-20	28741	. Retainer - Starter spring	1	All
-21	19547	. Shaft - Starter	1	All
-22	19548	. Bushing - Starter housing	1	All
-23	101611	. Seal - Oil	1	All
-24	19545	. Housing Assembly - Starter	1	All
-25	19180	Gasket - Starter	1	All
-26	19114	Ring - Clutch disc retaining 0.080 in. thick	As Req'd	All
	19114A	Ring - Clutch disc retaining 0.041 in. thick	As Req'd	All
	19114B	Ring - Clutch disc retaining 0.051 in. thick	As Req'd	All
	19114C	Ring - Clutch disc retaining 0.063 in. thick	As Req'd	All
	19114D	Ring - Clutch disc retaining 0.090 in. thick	As Req'd	All
	19114E	Ring - Clutch disc retaining 0.100 in. thick	As Req'd	All
	19114F	Ring - Clutch disc retaining 0.112 in. thick	As Req'd	All
	19114G	Ring - Clutch disc retaining 0.124 in. thick	As Req'd	All
	19114H	Ring - Clutch disc retaining 0.071 in. thick	As Req'd	All
-27	28113	Disc - Friction clutch	1	All
-28	101179	Nut - Hex 7/16-20	1	All
-29	101270	Washer	1	All
-30	28918A	Rotor Assembly - Clutch	1	All
-31	28766	Spring - Pawl	1	All
-32	28910	Spring - Clutch	1	All
-33	28915A	Shoe - Clutch	4	All
-34	28919A	Pawl Assembly	1	All
-35	28917	. Pin - Pivot	2	All
-36	28765	. Pawl - Starter	2	All
-37		. Rotor Assembly (Not available - Order Pawl Assembly #28919A)	1	All
-38	*28072A	Clutch Drum and Pinion Assembly	1	All
-39	19071	. Bearing - Clutch	1	All
-40	100199	Key - Woodruff No. 404	1	All

*Optional gear set available.

The information contained in this Master Illustrated Parts List is based on original Illustrated Parts Lists, Engineering Records and the Master Parts Price List and is accurate to the best of our knowledge. Additions and changes will be covered in special lists to be issued periodically to distributors and dealers. The Master Illustrated Parts List will be revised and reissued annually if necessary.

This Master Illustrated Parts List carries all the available parts for servicing and repairing the listed chain saw engines. When assemblies are no longer sold but parts are available for repair of the assemblies, the individual parts are listed under the no-longer available assembly and the replacement assembly is carried in parenthesis directly after the name of the part. Replacement assemblies when used in the production of other models appear in sequence in the various lists. When the replacement assembly was not used in the production of other models, the replacement assembly and its parts are boxed.

Each chain saw model is given a code letter. Whenever the code letter appears in the right hand column, the part is used on the engines of the model for which the code letter stands. When a part is used on all models covered in the Master Illustrated Parts List, the word "All" appears in the right-hand column instead of the code letters. When a model uses two different assemblies to do the same thing, earlier engines using the first assembly are coded as (for example) "A¹" and the later engines with the second assembly are coded "A²".

Names of parts have been checked and made to agree with the names given in the Master Parts Price List except in a very few cases where additional nomenclature was required.

The illustrations of the individual parts do not necessarily picture all the differences between parts with the same item number because the illustrations would be too complicated for use if they did. Instead, the illustration shows a representative part for each item number.