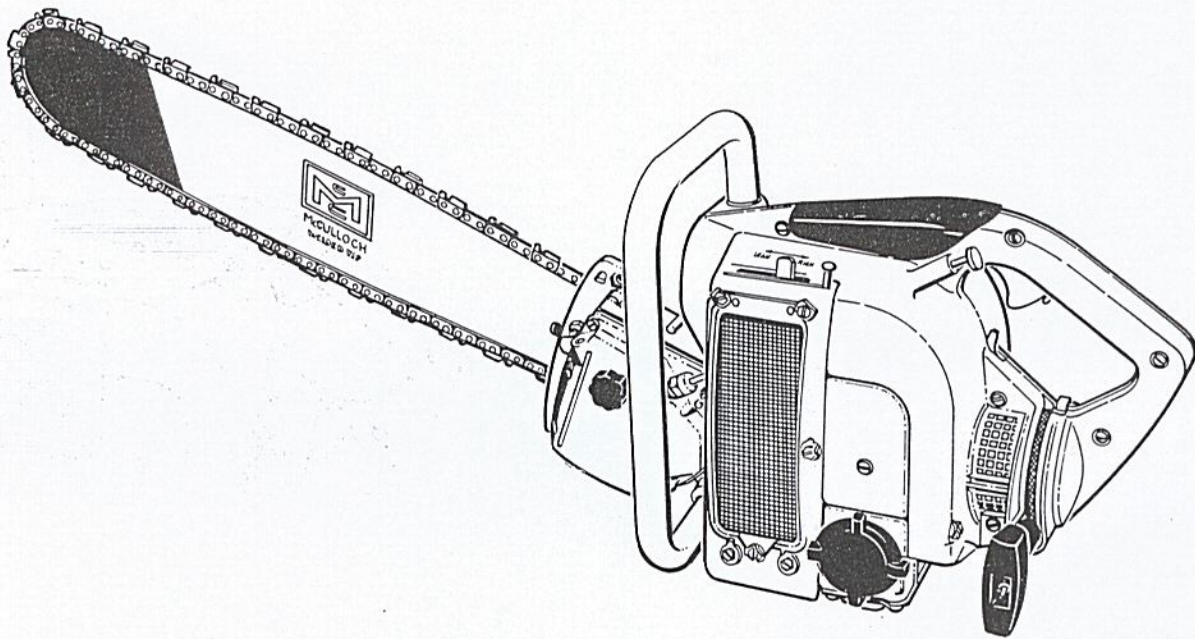


ILLUSTRATED PARTS LIST

MARCH 1961



The following pages contain an illustrated parts list for the Mac 35A Chain Saw. Due to small differences between saws, it is important that the Serial Number of your saw be included whenever spare parts are ordered. This will assure receiving the proper parts from your dealer.

	Page
Figure 1. Fan Housings, Muffler and Access Covers	2
Figure 2. Carburetor and Air Filter	4
Figure 3. Starter, Flywheel and Ignition System ..	6
Figure 4. Clutch and Transmission	8
Figure 5. Crankcase, Crankshaft, Cylinder and Piston	10
Figure 6. Saw Blade, Chain and Lockplate	12
Figure 7. Plunge Bow Saw Assembly	14
List of Accessories	15



McCULLOCH CORPORATION
6101 West Century Boulevard, Los Angeles 45, California

52604A

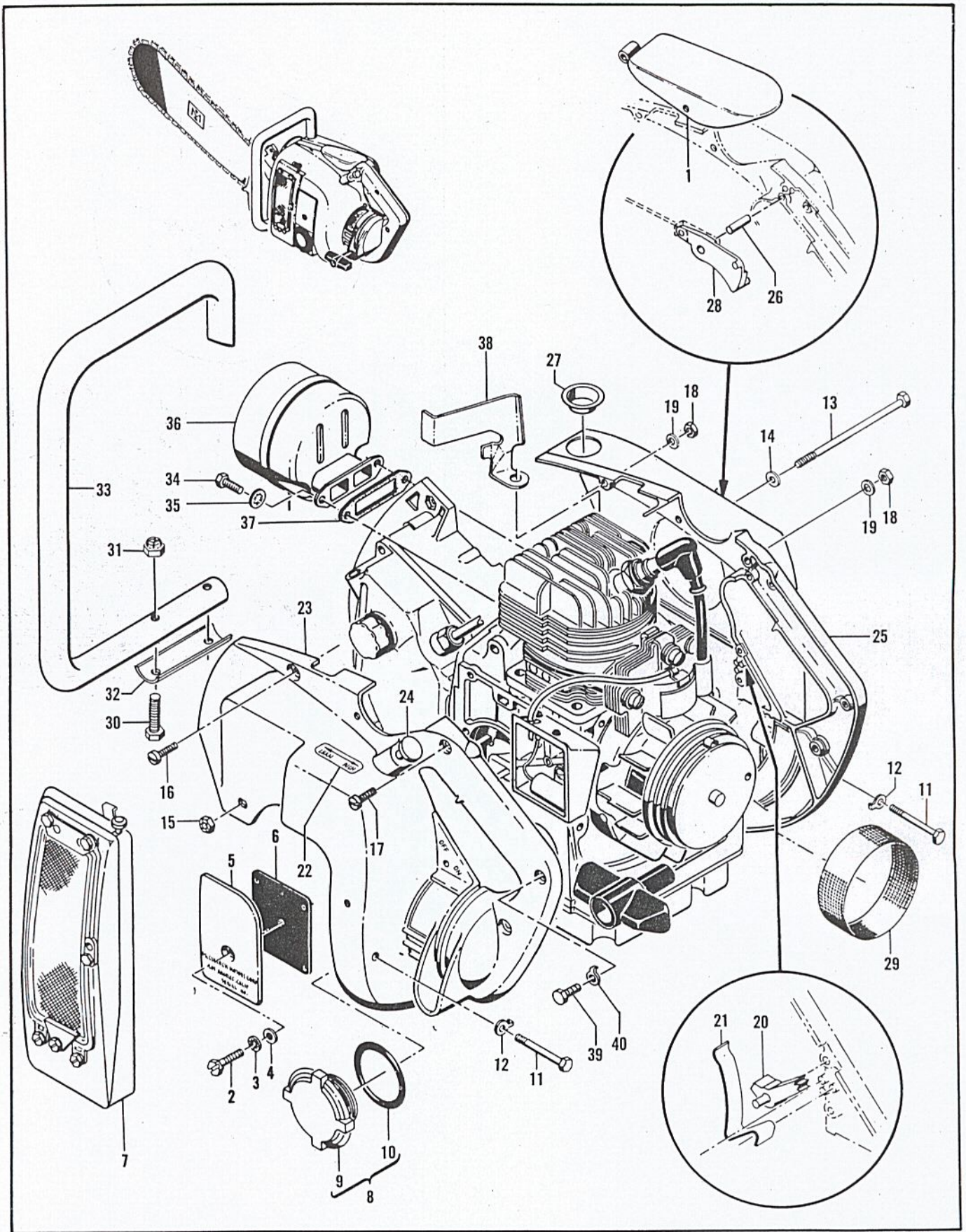


Figure 1. Fan Housings, Muffler and Access Covers

FIGURE 1. FAN HOUSINGS, MUFFLER AND ACCESS COVERS

Index No.	Part Number	Nomenclature	Units Per Assy
1	52288A	Cover - Spark plug access hole	1
2	102760	Screw - Hex hd 10-24 x 1 in. lg	1
3	101194	Lockwasher - No. 10 internal teeth	1
4	102189	Washer - Plain No. 10	1
5	36011	Cover - Breaker box	1
6	36013	Gasket - Breaker box	1
7	No Number	Carburetor and Air Filter (See figure 2.)	1
8	36202	Fuel Cap and Gasket Assembly	1
9	36200	. Fuel Cap	1
10	101348	. "O" Ring - Fuel cap	1
11	102125	Screw - Hex hd cap 1/4-20 x 1-3/4 in. lg	2
12	36306	Lockplate	2
13	102131	Bolt - Hex hd cap 1/4-20 x 4-1/2 in. lg	1
14	100311	Washer - 1/4 plain	1
15	101143	Nut - Self locking 1/4-20	1
16	102145	Screw - Fil hd 10-24 x 1-1/4 in. lg	1
17	102143	Screw - Fil hd 10-24 x 3/4 in. lg	5
18	101191	Nut - Hex 10-24	6
19	102189	Washer - Plain No. 10	6
20	36378	Toggle - Ground switch	1
21	36411A	Spring - Ground	1
22	36473	Decal - High speed adjustment	1
23	52273	Housing Assembly - Fan (LH)	1
24	52256	. Rod Assembly	1
25	52608	Housing Assy - Fan (RH)	1
26	103699	. Shaft	1
27	36333	. Bushing	1
28	36374A	Trigger Assembly - Throttle	1
29	36060	Screen - Sawdust	1
30	102130	Screw - Hex hd cap 1/4-20 x 1-1/2 in. lg	2
31	101143	Nut - Hex self locking 1/4-20	2
32	52411	Plate - Reinforcement	1
33	36168	Handle	1
34	102388	Screw - Slotted hex hd cap 10-24 x 5/8 in. lg	2
35	103100	Lockwasher	2
36	52366	Muffler Assembly	1
37	36093	Gasket - Exhaust	1
38	36532A	Air Baffle - Cylinder	1
39	102388	Screw - Hex hd 10-24 x 5/8 in. lg	3
40	28052A	Lockplate	3

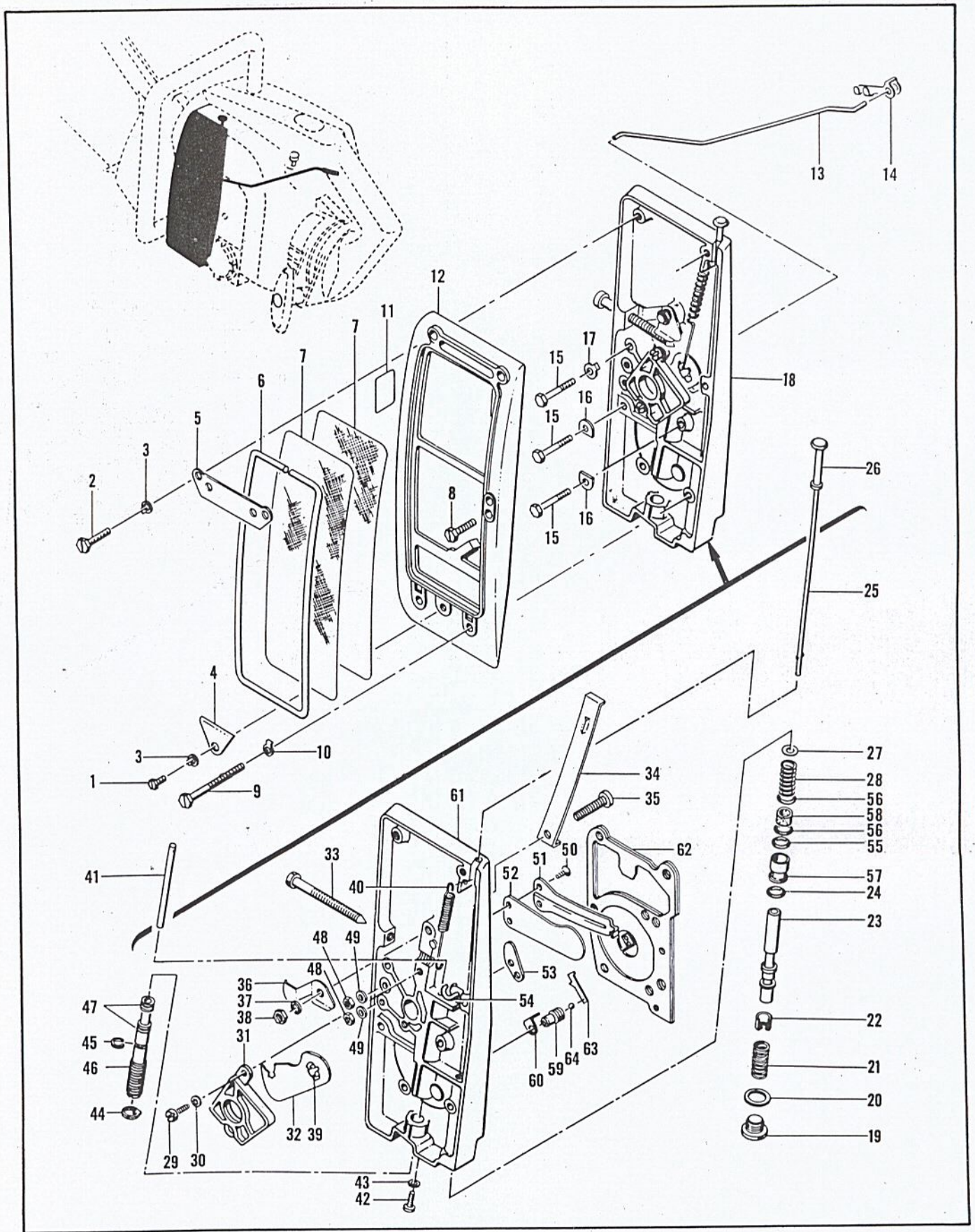


Figure 2. Carburetor and Air Filter

FIGURE 2. CARBURETOR AND AIR FILTER

Index No.	Part Number	Nomenclature	Units Per Assy
1	103469	Screw - Slotted hex hd 10-24 x 3/8 in. lg	1
2	102761	Screw - Slotted hex hd 10-24 x 7/8 in. lg	2
3	28052	Lockplate	3
4	36424	Clamp - Small	1
5	36425	Clamp - Large	1
6	36426	Retainer - Air filter	1
7	36427	Air Filter Screen	2
8	102765	Screw - Slotted hex hd 10-24 x 1-3/4 in. lg	1
9	102586	Screw - Slotted hex hd 10-24 x 2.00 in. lg	2
10	28052	Lockplate	3
11	36495	Decal - Idle adjustment	1
12	36382A	Cover - Carburetor	1
13	36409	Link - Throttle	1
14	36496	Clip - Throttle control link	1
15	102760	Screw - Hex hd 10-24 x 1 in. lg	3
16	36388	Lockplate	2
17	28052	Lockplate	1
18	36621A	Body Assembly - Carburetor (complete)	1
19	36445	. Screw - Special slotted	1
20	36446	. Gasket - Primer	1
21	11086	. Spring - Primer	1
22	24104	. Cup - Packing	1
23	36140	. Plunger - Primer	1
24	101056	. Packing - "O" ring	1
	36198	. Push Rod Assembly - Primer	1
25	36199	. Push Rod	1
26	36197	. Button	1
27	102206	. Washer	1
28	28754	. Spring - Push rod	1
29	101991	. Screw - Fil hd 10-24 x 1/2 in. lg	2
30	101194	. Lockwasher - No. 10 internal teeth	2
31	36117	. Frame - Throttle gate	1
32	36116	. Gate - Throttle	1
33	102687	. Screw - Idle adjusting	1
34	36356	. Lever - Throttle gate adjusting	1
35	101904	. Screw - Pan head 10-24 x 3/4 in. lg	1
36	36494	. Retainer - Idle screw	1
37	100240	. Lockwasher - No. 10 spring	1
38	100239	. Nut - Hex 10-24	1
39	36255	. Spring - Throttle gate	1
40	52421	. Spring - Push rod	1
41	36618	. Push Rod - Carburetor	1
42	102500	. Screw - Pan hd 10-24 x 1/2 in. lg	1
43	100002	. Washer - Plain	1
44	36132	. Washer - Tongue	1
45	103251	. Ring - Retaining	1
46	36620	. Needle Seat Assembly	1
47	101258	. Packing - "O" ring	2
48	100796	. Nut - Self locking 6-32	2
49	100296	. Washer - No. 6 plain	2
50	102834	. Screw - Flat hd 6-32 x 5/8 in. lg	2
51	36114A	. Guard - Reed valve	1
52	36115A	. Reed Valve	1
	36628A	. Body Assembly - Carburetor	1
53	36109A	. Arm - Gate lever	1
54	36108	. Lever - Gate	1
55	101056	. Packing - "O" ring	1
56	36625	. Washer - "O" ring	2
57	36150	. Sleeve - Primer	1
58	21112	. Seal - Felt	1
59	28737	. Seat - Ball check valve	1
60	19625	. Hinge - Diaphragm	1
61	No Number	. Body (Procurable only as 36628A Body Assembly)	1
62	36696B	. Diaphragm and Gasket Assembly	1
63	19626	. Lever	1
64	100302	. Ball - .125 in. dia	1

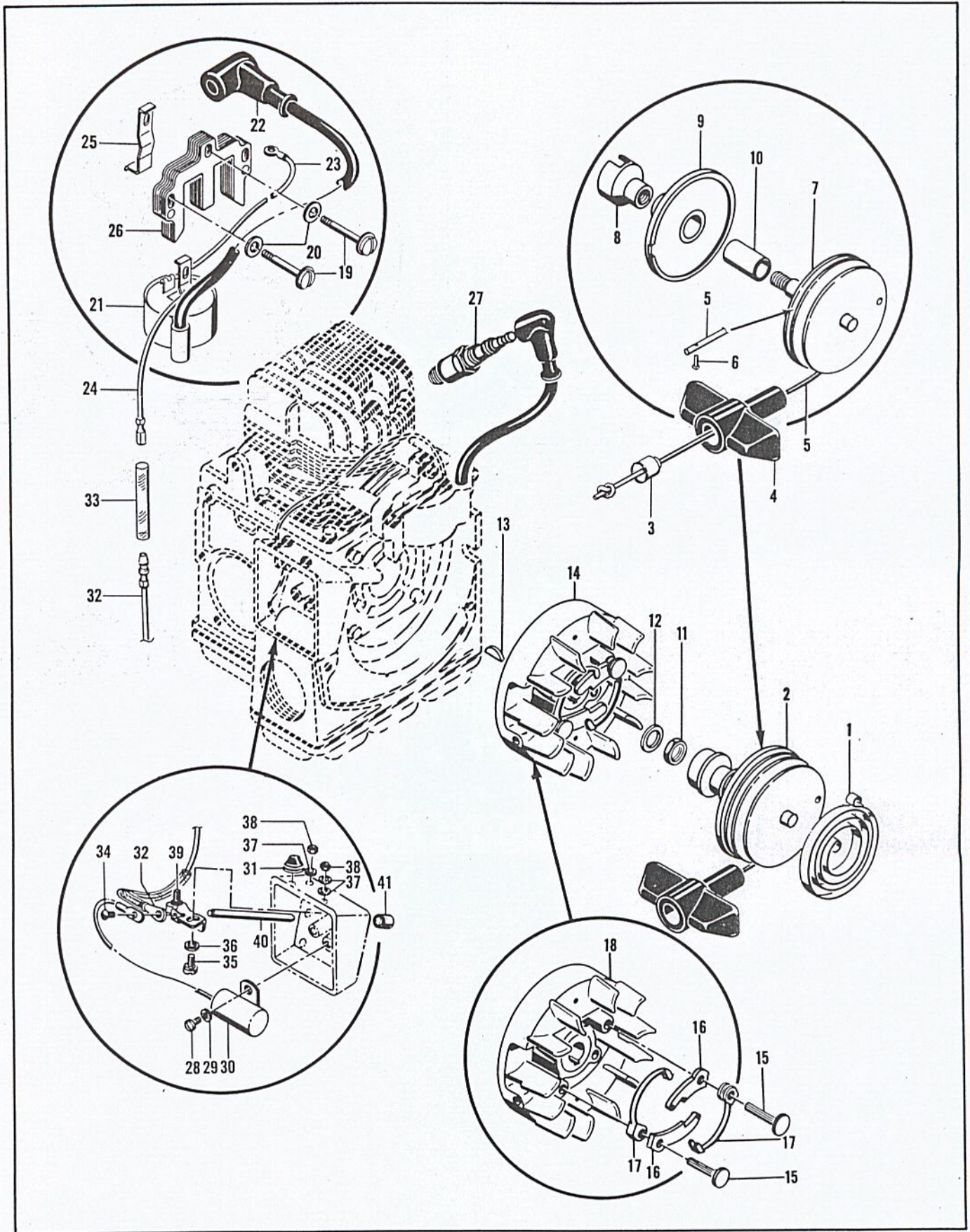


Figure 3. Starter, Flywheel and Ignition System

FIGURE 3. STARTER, FLYWHEEL, AND IGNITION SYSTEM

Index No.	Part Number	Nomenclature	Units Per Assy
1	36059	Spring - Starter rewind	1
2	36451B	Starter Assembly	1
3	24818	. Cup - Starter assembly	1
4	24822	. Handle - Starter rope	1
5	36840	. Rope - Starter	1
6	103697	. Rivet	1
7	36856	. Drum - Starter	1
8	36058	. Jaw - Starter	1
9	36053A	. Base Assembly - Starter	1
10	36055	. Bushing - (Pressed into base)	1
11	101179	Nut - Hex jam 7/16-20	1
12	101270	Washer - Plain 7/16 in.	1
13	100199	Key - Flywheel to crankshaft	1
14	36396	Flywheel and Starter Pawl Assembly	1
15	36144	. Pin - Starter pawl	2
16	24093	. Pawl - Starter	2
17	24119	. Spring - Pawl return	2
18	36366	. Flywheel Assembly	1
19	101965	Screw - Fil hd 10-24 x 7/8 in. lg (SEMS)	3
20	100003	Washer - Plain No. 10	3
	36081B	Coil and Lamination Assembly	1
21	36146B	. Coil and Terminal Assembly	1
22	52547	. Wire Assembly - Spark plug	1
23	101883	. Wire - Ground	1
24	52064	. Wire Assembly - Primary	1
25	19034	. Retainer - Coil	2
26	36082	. Lamination Assembly	1
27	14 MM	Spark Plug and Gasket	1
28	100362	Screw - Fil hd 8-32 x 3/8 in. lg	1
29	100057	Lockwasher - No. 8 internal teeth	1
30	100075	Condenser	1
31	28322	Grommet	1
32	52065	Wire - Primary	1
33	52066	Sleeve	1
34	101207	Screw - Rd hd 6-32 x 1/4 in. lg	1
35	24626	Screw - Eccentric	1
36	100007	Washer - Plain 5/16 in.	1
37	100003	Washer - Plain No. 10	3
38	101191	Nut - Hex 10-24	2
39	19894A	Breaker Assembly	1
40	36012	Push Rod - Breaker	1
41	24321A	Seal - Felt push rod	1

FIGURE 4. CLUTCH AND TRANSMISSION

Index No.	Part Number	Nomenclature	Units Per Assy
	52593	Transmission Assembly	1
1	102205	. Screw - Fil hd 10-24 x 1-3/8 in. lg	8
2	102189	. Washer - Plain No. 10	8
3	101194	. Lockwasher - No. 10 internal teeth	5
4	101191	. Nut - Hex 10-24 (Spike Retaining)	3
5	101982	. Screw - Hex hd cap 1/4-20 x 1 in. lg	2
6	100153	. Lockwasher - 1/4 in. internal teeth	2
7	100004	. Washer - Plain 1/4 in.	2
8	52291	. Tank Assembly - Oiler	1
9	52388	. Oil Filler Cap	1
10	101148	. Gasket	1
11	101864	. Plug - Slotted hd pipe 1/16-27	1
12	36421	. Spring - Discharge	1
13	100549	. Ball - .1875 in. dia	2

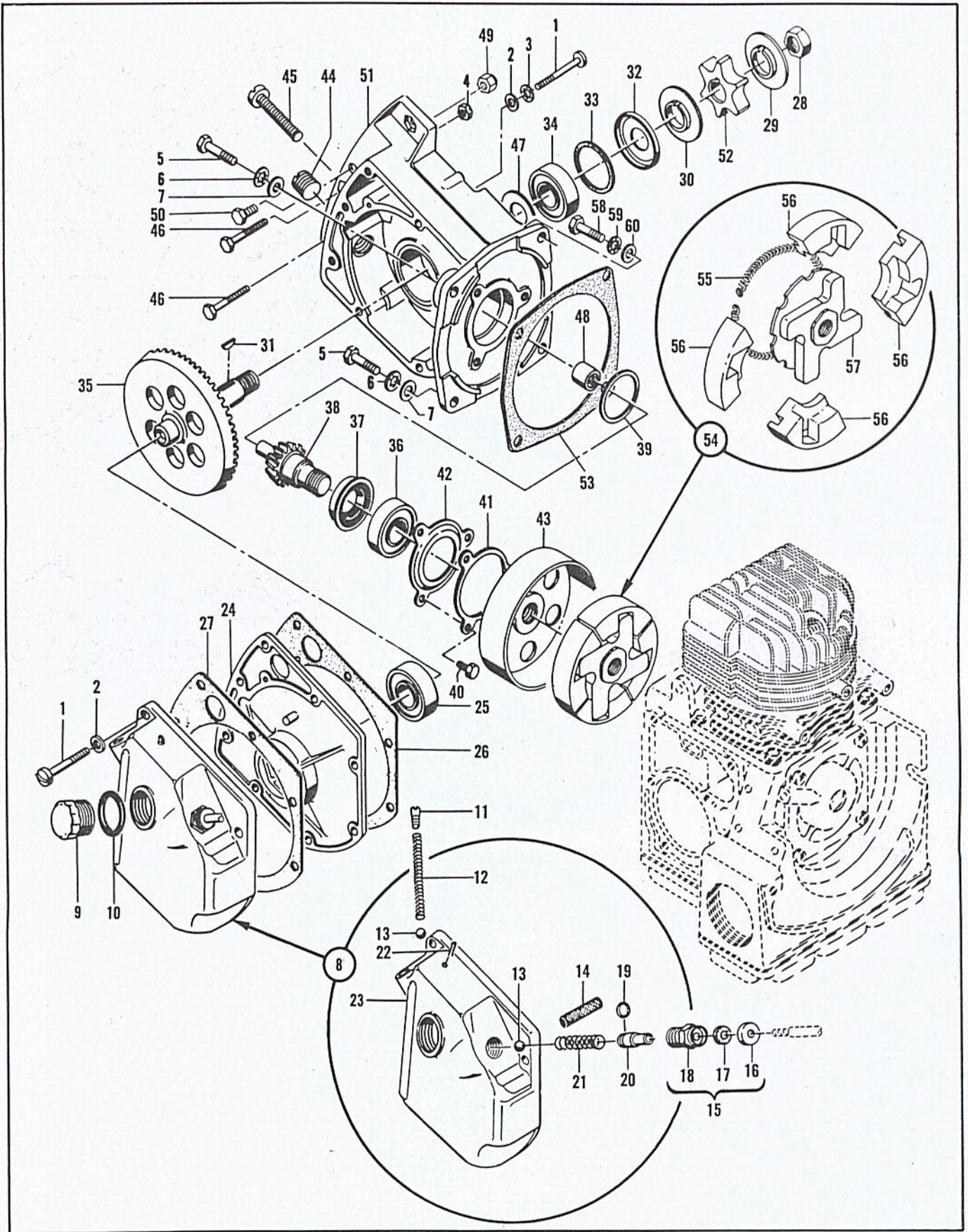


Figure 4. Clutch and Transmission

Index No.	Part Number	Nomenclature	Units Per Assy
14	52276	Screen - Intake	1
15	52297	Plug and Seal Assembly	1
16	36165	Cap - Seal	1
17	36420	Seal - Felt	1
18	36163	Plug	1
19	101056	Packing - "O" ring	1
20	36126	Piston - Pump	1
21	52433	Spring	1
22	100010	Pin - Cotter	1
23	52275	Tank - Oiler	1
	36154B	Separator Assembly	1
24	36136B	Separator	1
25	103482	Bearing - Ball	1
26	52323A	Shim - .011 in. thick	As Req.
	52323B	Shim - .019 in. thick	As Req.
27	52323B	Shim - .019 in. thick	1
28	100836	Nut	1
29	36862	Shroud - Sprocket (Outer)	1
30	36019A	Shroud - Sprocket (Inner)	1
31	100256	Key - Woodruff	1
32	19162	Shield - Dust	1
33	36155	Felt - Dust shield	1
34	103482	Bearing - Ball	1
35	*	Gear - Bevel (See note below)	1
36	103482	Bearing - Ball	1
37	36159	Seal	1
38	*	Pinion (See note below)	1
39	36160A	Shim - .009 - .011 in. thick	As Req.
	36160B	Shim - .014 - .016 in. thick	As Req.
	36160C	Shim - .002 - .004 in. thick	As Req.
40	102762	Screw - Slotted hex hd 10-24 x 1/2 in. lg	3
41	36301	Lockplate	1
42	36138	Retainer - Bearing	1
43	52341	Drum Assembly - Clutch	1
	52356	Gear Case Assembly	1
44	104218	Plug - Oil filler 3/8-18	1
45	36151B	Screw - Blade adjusting	1
46	52208	Screw - (Special) (Bar Key)	2
47	102577	Seal - Oil	1
48	102186	Bearing - Needle	1
49	101143	Nut - Hex self locking 1/4-20	1
50	100732	Screw - Hex hd 1/4-20 x 5/8 in. lg	1
51	52357	Case - Gear	1
52	36020A	Sprocket - 6 tooth	Opt.
	36897	Sprocket - 7 tooth	Opt.
53	36623	Spacer - Transmission	1
54	52067A	Rotor Assembly - Clutch	1
55	51468	Spring - Clutch	1
56	51464A	Shoe - Clutch	4
57	52062A	Spider Assembly	1
58	101982	Screw - Hex hd cap 1/4-20 x 1 in. lg	2
59	100153	Lockwasher - 1/4 in. internal teeth	2
60	100004	Washer - Plain 1/4 in.	2

*Matched Parts. Bevel and Pinion Gear must be purchased as a set: Order under Part No. 36258B.

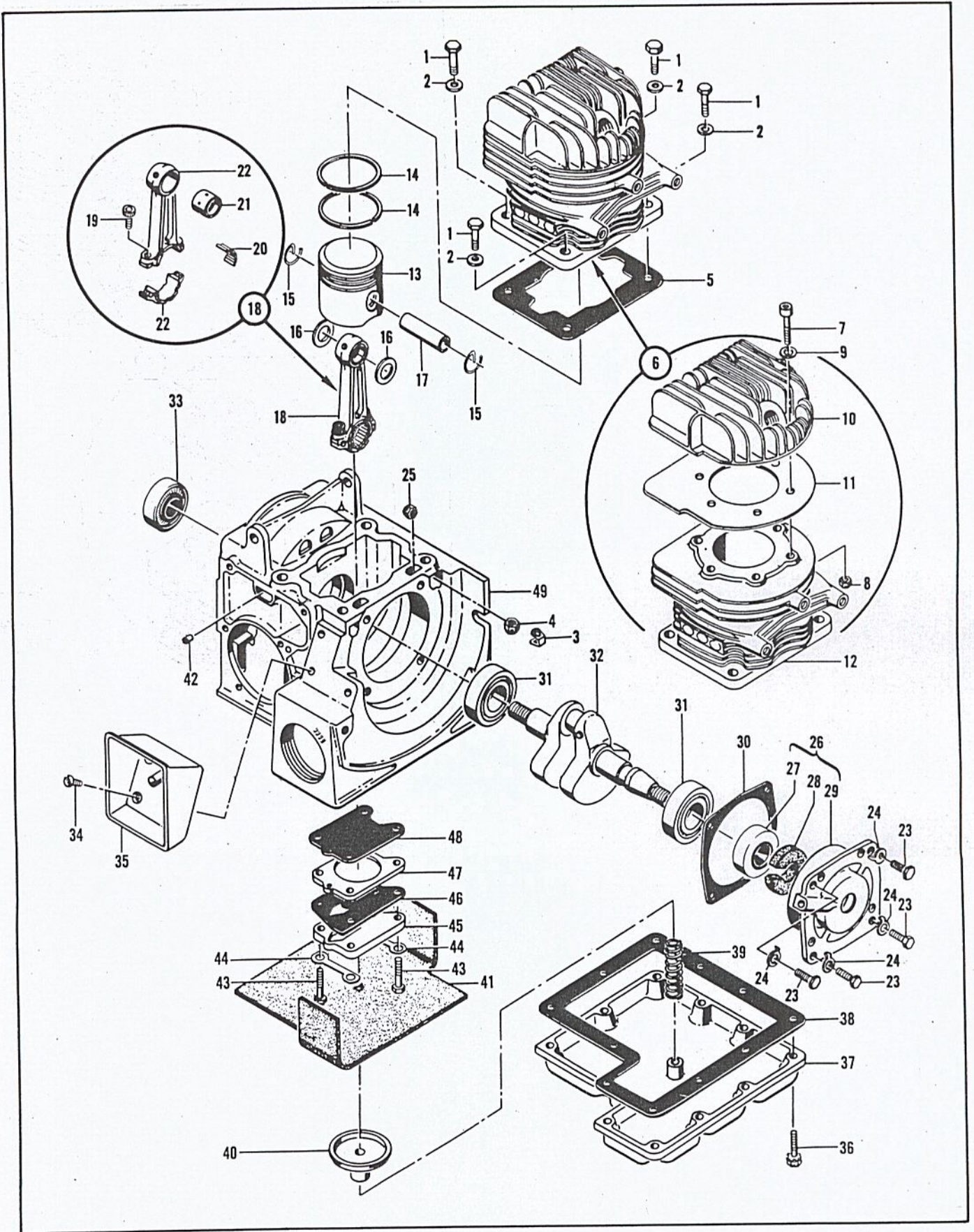


Figure 5. Crankcase, Crankshaft, Cylinder and Piston

FIGURE 5. CRANKCASE , CRANKSHAFT, CYLINDER AND PISTON

Index No.	Part Number	Nomenclature	Units Per Assy
1	101885	Screw - Hex hd cap 1/4-28 x 7/8 in. lg	4
2	100311	Washer - Plain 1/4 in.	4
3	18556A	Retainer - Nut 1/4	4
4	100640	Nut - Hex 1/4-28 self locking	4
5	36442	Gasket - Cylinder	1
6	36465A	Cylinder Assembly	1
7	102660	. Screw - Socket hd cap 10-24 x 1 in. lg	6
8	101326	. Nut - Hex 10-24	6
9	24236	. Washer - Plain	6
10	36470A	. Head - Cylinder	1
11	52222	. Gasket - Cylinder head	1
12	36466A	. Cylinder	1
	52379	Piston Assy	1
13		. Piston Order Assembly 52379	
14	52371	. Ring - Piston (Set of 2 Rings)	
15	36097	. Ring - Retaining	2
16	36227	Washer - Special	2
17	20014	Pin - Piston	1
18	36575A	Connecting Rod Assembly	1
19	101356	. Screw - Socket hd cap 10-32 x 5/8 in. lg	2
20	102742	. Roller - Needle	22
21	36014A	. Bushing - Wrist pin	1
22	36574A	. Connecting Rod - (2 pieces)	1
23	102388	Screw - Hex hd mach 10-24 x 5/8 in. lg	4
24	28052	Lockplate	4
25	101326	Nut - Hex 10-24	2
26	36027A	End Cover Assembly	1
27	102940	. Seal - Oil	1
28	36302	. Oiler - Cam	1
29	36017A	. Cover - End	1
30	36028	Gasket - End cover	1
31	100824	Bearing - Ball	2
32	36025A	Crankshaft	1
	52378	Crankcase Assembly	1
33	102940	. Seal - Oil	1
34	100852	. Screw - Flat hd 10-24 x 1/2 in. lg countersunk	3
35	36010	. Box - Breaker	1
36	103464	. Screw - Hex hd 10-24 x 3/4 in. lg (SEMS)	11
37	36079	. Bottom - Fuel tank	1
38	36080A	. Gasket - Bottom	1
39	36240	. Spring - Wick retaining	1
40	36239	. Cap - Wick retaining	1
41	36256	. Wick	1
42	36474	. Plug - Vent	1
43	102101	. Screw - Hex hd mach 10-24 x 7/8 in. lg	4
44	28210	. Lockplate	2
45	36234	. Retainer - Valve	1
46	36338A	. Valve Assembly - Fuel pump	1
47	36233	. Body - Fuel pump	1
48	36235A	. Diaphragm	1
49	52318	. Crankcase	1

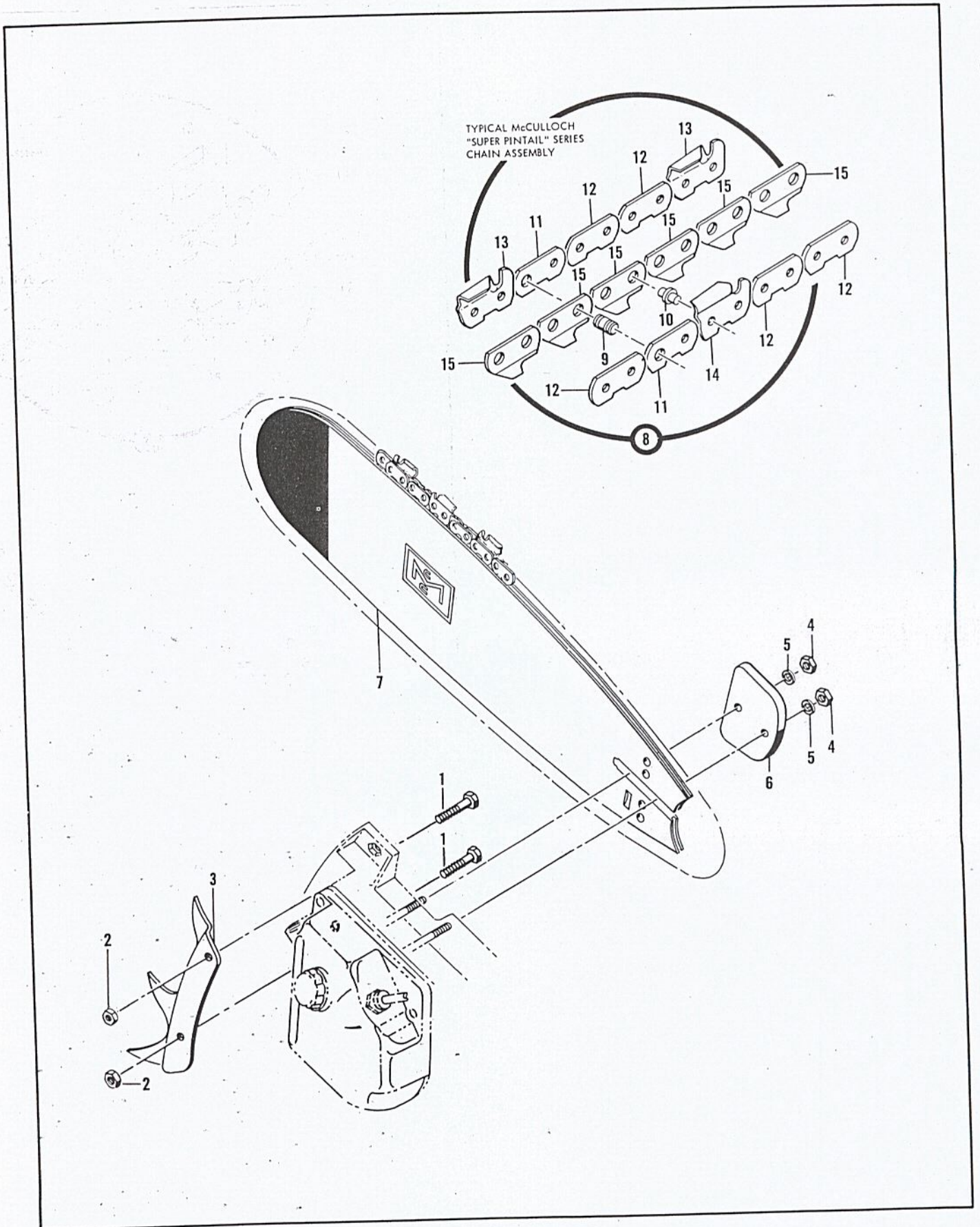


Figure 6. Saw Blade, Spike, Chain and Lockplate

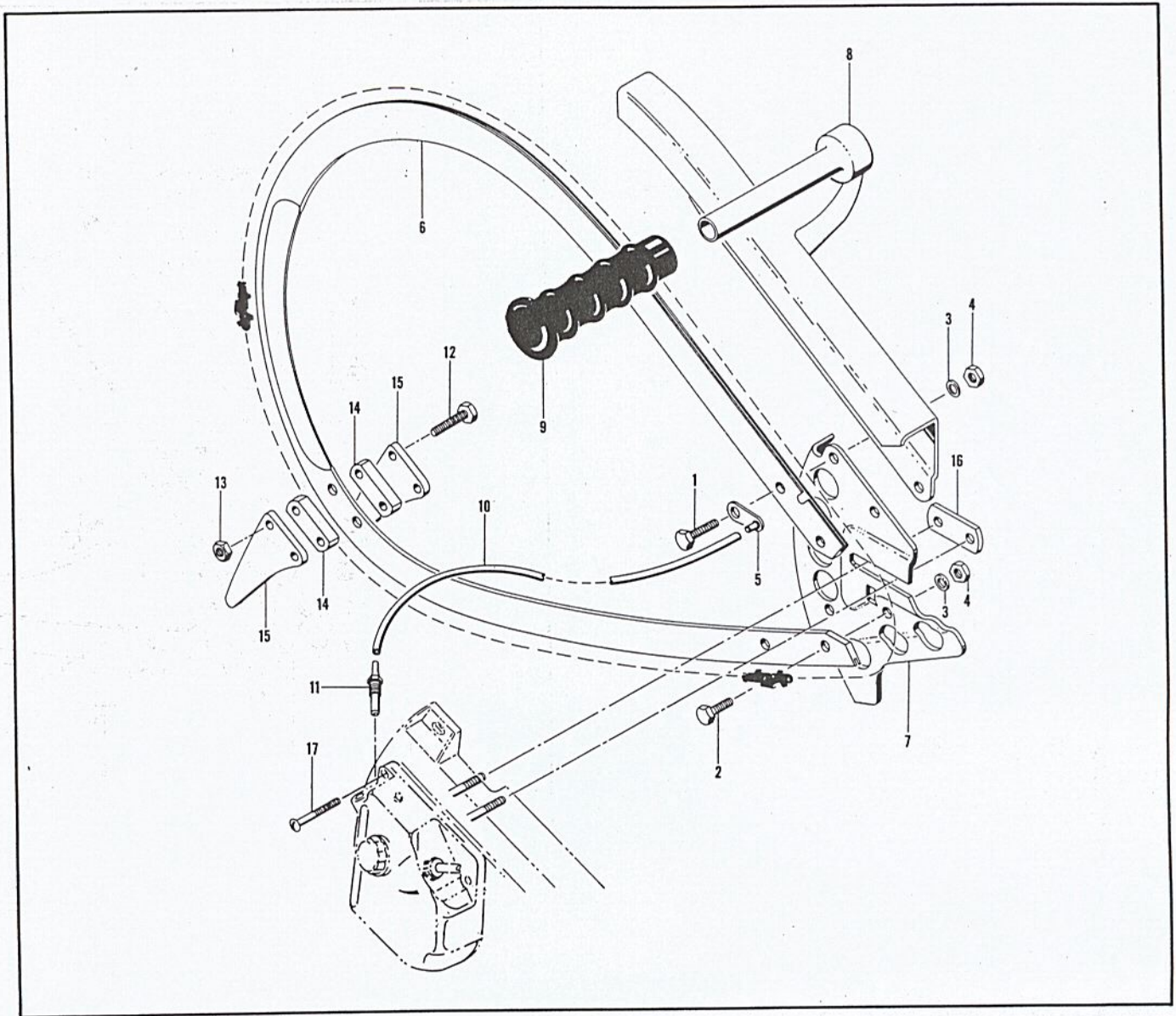
FIGURE 6. SAW BLADE, SPIKE, CHAIN AND LOCKPLATE

Index No.	Part Number	Nomenclature	Units Per Assy
1	100732	Screw - Hex hd mach 1/4-20 x 5/8 in. lg	2
2	101143	Nut - Hex 1/4-20	2
3	52415	Spike	1
4	103729	Nut - Hex self locking 3/8-24	2
5	100006	Washer - Plain 3/8 in.	2
6	52289	Plate - Clamp	1
7	52122	Bar - 12 in. (.170 Thick) Flame hardened	Opt.
	52392	Bar - 12 in. (.170 Thick)	Opt.
	52558	Bar - 16 in. (.170 Thick) Flame hardened	Opt.
	55204	Bar - 16 in. (.185 Thick)	Opt.
	52551	Bar - 20 in. (.170 Thick) Flame hardened	Opt.
	51405A	Bar - 20 in. (.185 Thick)	Opt.
	51407A	Bar - 26 in. (.185 Thick)	Opt.
	51409A	Bar - 32 in. (.185 Thick)	Opt.

TYPICAL McCULLOCH "SP" SERIES CHAIN ASSEMBLY

8	---	Typical McCulloch Chain Assembly
9	---	Master Pin
10	---	Shoulder Rivet
11	---	Master Link
12	---	Side Link
13	---	Cutter Tooth, LH
14	---	Cutter Tooth, RH
15	---	Center Link

FIGURE 7. PLUNGE BOW SAW ASSEMBLY



Index No.	Part Number	Nomenclature	Units Per Assy
	36345C	Plunge Bow Saw Assembly.....	1
1	101982	. Bolt - Hex hd fin 1/4-20 x 1 in. lg	3
2	100882	. Bolt - Hex hd fin 1/4-20 x 3/4 in. lg	2
3	100004	. Washer - Plain 1/4 in.	5
4	101143	. Nut - Hex hd 1/4-20 "Lokut"	5
5	36348	. Oil Tube and Plate Assembly	1
6	52119	. Track	1
7	36343A	. Plate - Adjusting	1
8	36340A	. Body - Bow saw	1
9	18207A	. Grip - Handle	1
	36452A	. Bow Saw Kit	1
10	36454	. . Hose - Oiler 3-3/4 in. lg	1
11	36349	. . Fitting - Oiler tank	1
12	102130	. . Bolt - Hex hd fin 1/4-20 x 1-1/2 in. lg	2
13	101143	. . Nut - Hex hd 1/4-20 "Lokut"	2
14	28259	. . Spacer	2
15	28256	. . Spike	2
16	36344A	. . Plate - Filler	2
17	101181	. . Screw - Rd hd No. 10-24 x 1-1/4 in. lg	1

TOOLS AND ACCESSORIES FURNISHED WITH EACH SAW

Part Number	Nomenclature
51445	Wrench and Screwdriver Combination
52605A	Instruction Manual Mac 35A
52604A	Illustrated Parts List - Mac 35A
56625A	Chain Maintenance Manual
102392	Timing Pin
100256	Key

ACCESSORIES

Part Number	Nomenclature
36345C	Plunge Cut Bow Assembly (Hard Faced)
101259	Hand Grinder - Chain 1/10 hp 110 volt ac
101308	Stone - Grinding (5/16 inch diameter)
102094	Chain Grinding Fixture
102449	McCulloch Yellow Paint (12 oz Spray Bomb Type)
102057	McCulloch Oil (1 quart)
102664	McCulloch Oil (12 oz can)