

Illustrated Parts List

DIRECT DRIVE

MODEL

D - 44

McCULLOCH CHAIN SAW

(# 51367 D44-47,689 NOVEMBER 1957®)

McCULLOCH MOTORS CORPORATION

6101 West Century Blvd., Los Angeles 45, Calif.

ILLUSTRATIONS

	Page
Figure 1. Engine Exploded View - General	2
Figure 2. Fuel System Components	4
Figure 3. Starter and Clutch Assembly	6
Figure 4. Chain Oiler, Bar and Chain	8
Figure 5. Powerhead Assembly	10
Figure 6. Carburetor Assembly	12
Figure 7. Handle and Control Assembly	14

NOTE: A complete parts price list is available upon request.

The following pages contain an illustrated parts list for the Model D-44 Chain Saw. Due to small differences between saws, it is important that the Serial Number of your saw be included whenever spare parts are ordered. This will assure receiving the proper parts from your dealer.

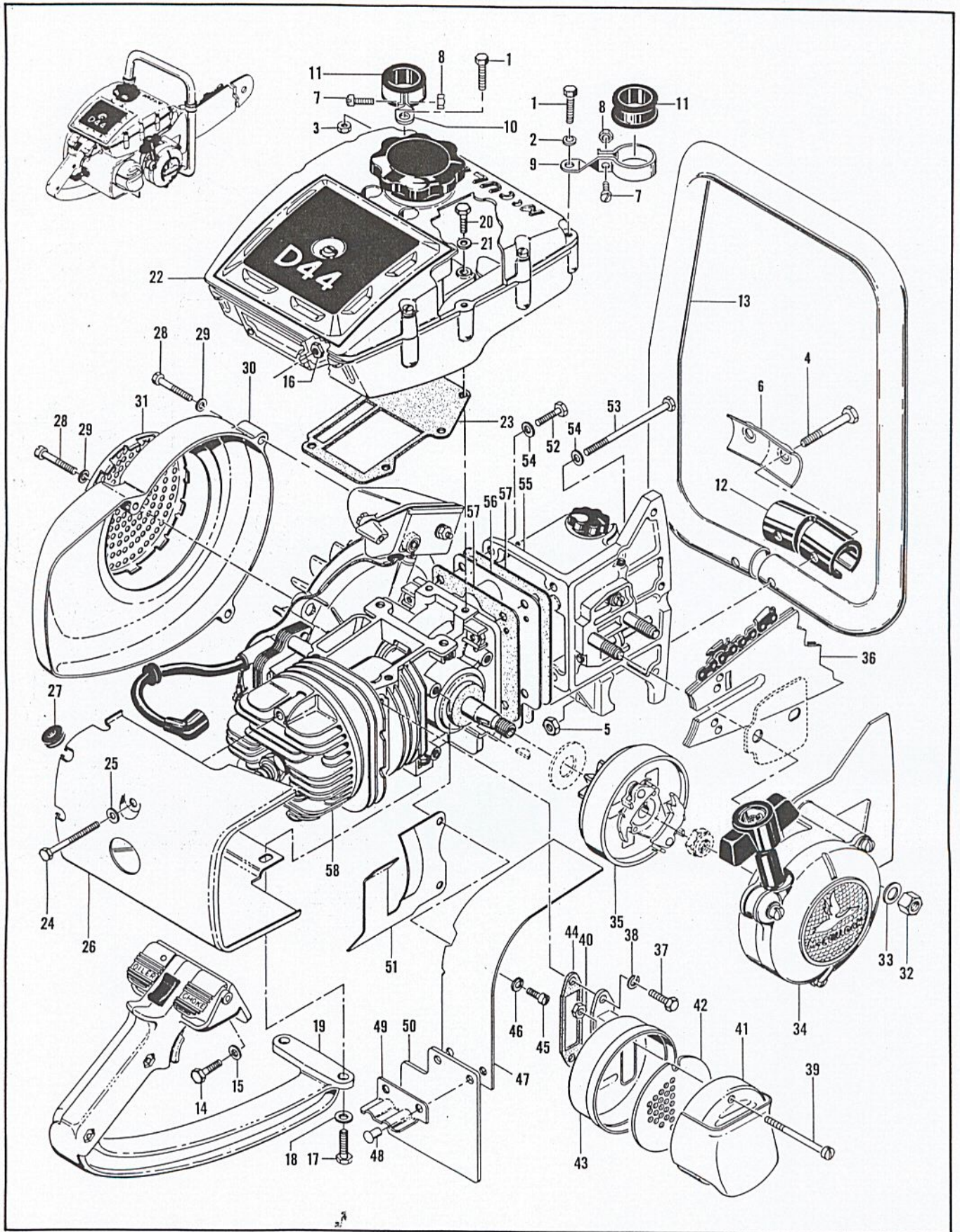


Figure 1. Engine Exploded View - General

FIGURE 1. ENGINE EXPLODED VIEW—GENERAL

Index No.	Part Number	Nomenclature	Units Per Assy
1-1	101982	Screw - Hex hd 1/4-20 x 1 in. lg	2
-2	100246	Washer - Lock	1
-3	101143	Nut - Hex 1/4-20	1
-4	102125	Screw - Hex hd 1/4-20 x 1-3/4 in. lg	2
-5	101143	Nut - Hex 1/4-20	2
-6	51362	Clamp - Frame	1
-7	102141	Screw - Fil hd 10-24 x 5/8 in. lg	2
-8	100239	Nut - Hex 10-24	2
-9	51353	Brace - Frame R.H.	2
-10	51786	Brace - Frame L.H.	1
-11	51363	Collar - Insulator	2
-12	51364	Clamp - Insulator	1
-13	51308	Frame Assy - Saw	1
-14	102763	Screw - Hex hd 10-24 x 3/4 in. lg	2
-15	102189	Washer - No. 10	2
-16	101191	Nut - Hex 10-24	2
-17	102121	Screw - Hex hd 1/4-20 x 7/8 in. lg	2
-18	100005	Washer - 1/4 in.	2
-19	51937	Handle and Control Assy (See figure 7)	1
-20	102763	Screw - Hex hd 10-24 x 3/4 in. lg	4
-21	103744	Washer - Sealing No. 10	4
-22	No Number	Fuel System Components (See figure 2)	1
-23	51481	Insulator - Fuel tank	1
-24	102586	Screw - Hex hd 10-24 x 2 in. lg	1
-25	102189	Washer - No. 10	1
-26	51229	Shroud - Cylinder	1
-27		Grommet (Ignition switch) (See figure 7)	
-28	102145	Screw - Fil hd 10-24 x 1-1/4 in. lg	3
-29	102189	Washer - No. 10	3
-30	51228	Housing - Fan	1
-31	51207	Guard - Sawdust	1
-32	103729	Nut - Hex 3/8-24	2
-33	100006	Washer - 3/8 in.	2
-34	51260A	Starter Assy (See figure 3)	1
-35	No Number	Clutch Drive and Sprocket Assy (See figure 3)	1
-36		Bar and Chain Assy (See figure 4)	1
-37	102388	Bolt - Hex hd 10-24 x 5/8 in. lg	2
-38	103100	Washer	2
	51966	Muffler Assy	1
-39	103361	. Screw - Fil hd mach 10-24 x 1-5/8 in. lg	2
-40	101191	. Nut - Hex 10-24	2
-41	51979	. Top Assy - Muffler	1
-42	51968	. Baffle - Muffler	1
-43	51975	. Bottom - Muffler	1
-44	36093	Gasket - Muffler	1
-45	103998	Screw - Fil hd 10-24 x 5/8 in. lg	3
-46	100153	Washer - Lock	3
	51991	Guard Assy - Muffler	1
-47	51990	. Guard - Muffler	1
-48	103819	. Rivet - 0.187 dia x 5/16 in. lg	2
-49	55113	. Angle	1
-50	55112	. Deflector	1
-51	51989	Jacket - Cylinder	1
-52	103258	Screw - Hex hd 1/4-20 x 1-1/8 in. lg	2
-53	102127	Screw - Hex hd 1/4-20 x 3-1/4 in. lg	2
-54	100005	Washer	4
-55	51938	Oiler Housing Assy (See figure 4)	1
-56	51789B	Bottom - Crankcase	1
-57	51241A	Gasket - Bottom	2
-58	No Number	Powerhead Assy (See figure 5)	1

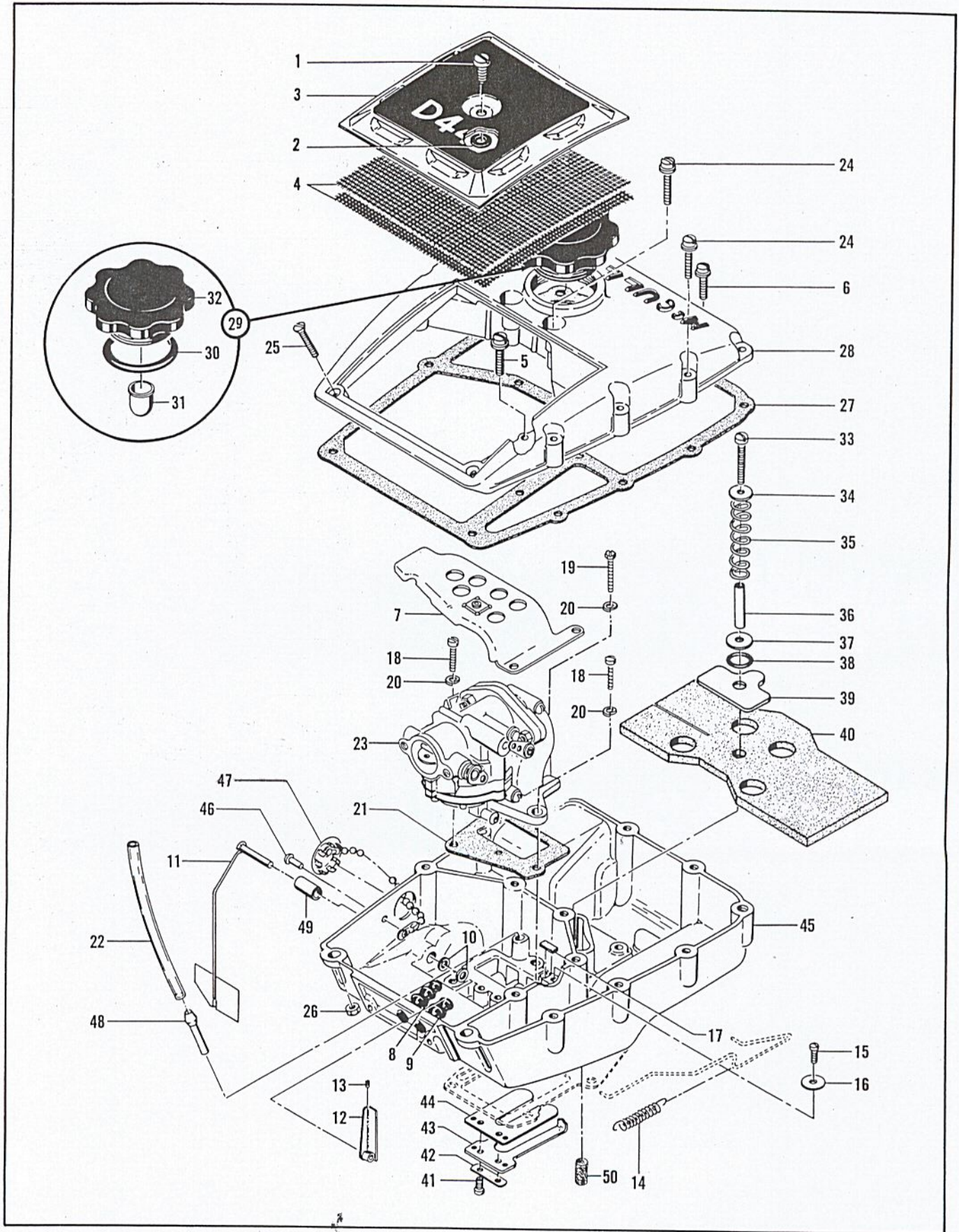


Figure 2. Fuel System Components

FIGURE 2 FUEL SYSTEM COMPONENTS

Index No.	Part Number	Nomenclature	Units Per Assy
2	51158	Cover Assy - Air cleaner	1
-1	51351	. . . Screw - Special	1
-2	55033	. Retainer - Screw	1
-3	51533A	. Cover - Air cleaner	1
-4	51157	Screen - Air cleaner	2
-5	103859	Screw - Fil hd 10-24 x 3/4 in. lg (Sems)	2
-6	103725	Screw - Fil hd 10-24 x 1.00 (Sems)	2
-7	51840	Anchor Assy - Air cleaner	1
-8	51483	Grommet - Bellows type (Long)	1
-9	51561	Grommet - Bellows type (Short)	1
-10	102189	Washer - No. 10	3
-11	51389A	Governor Arm Assy	1
-12	51558	Lever Assy - Governor arm	1
-13	103812	. Screw - Set 8-32 x 3/16 in. lg	1
-14	36499	Spring - Throttle	1
-15	103928	Screw - Fil hd 8-32 x 1/2 in. lg	1
-16	51395A	Retainer - Throttle rod	1
-17	51394	Felt - Throttle rod	1
-18	102764	Screw - Fil hd 10-24 x 1-1/4 in. lg	2
-19	103932	Screw - Hex hd 10-24 x 1-3/4 in. lg	1
-20	100240	Washer - Lock No. 10	3
-21	51357	Gasket - (Adapter to fuel tank)	1
-22	51577A	Hose - Fuel line	1
-23	51907	Carburetor and Adapter Assy (See figure 6)	1
-24	103858	Screw - Fil hd 10-24 x 1-1/4 in. lg (Sems)	7
-25	103579	Screw - Flat hd 10-24 x 1 in. lg	2
-26	101326	Nut - Hex 10-24	2
-27	51334A	Gasket - Fuel tank	1
-28	51315B	Tank - Fuel (Top)	1
-29	52136	Fuel Cap and Gasket Assy	1
-30	101348	. "O" Ring - Fuel cap	1
-31	47252A	. Valve	1
-32	52137	. Cap - Fuel	1
-33	101974	Screw - Fil hd 10-24 x 1-1/2 in. lg	1
-34	100289	Washer	1
-35	19236	Spring - Wick retaining	1
-36	51312	Tube - Wick holder	1
-37	100950	Washer	1
-38	101056	Packing - "O" ring	1
-39	51317	Clamp - Wick	1
-40	51309	Wick - Fuel pickup	1
-41	103748	Screw - Fil hd 8-32 x 1/2 in. lg	2
-42	51480	Lockplate	1
-43	51810	Guard - Reed valve	1
-44	51809	Valve - Reed	1
-45	51320A	Tank Bottom Assy - Fuel	1
-46	102808	. Rivet	1
-47	51396	. Cover Assy - Adjustment hole	1
-48	103155	. Nipple	1
-49	103708	. Bushing	1
-50	18375A	. Screen - Drain	1

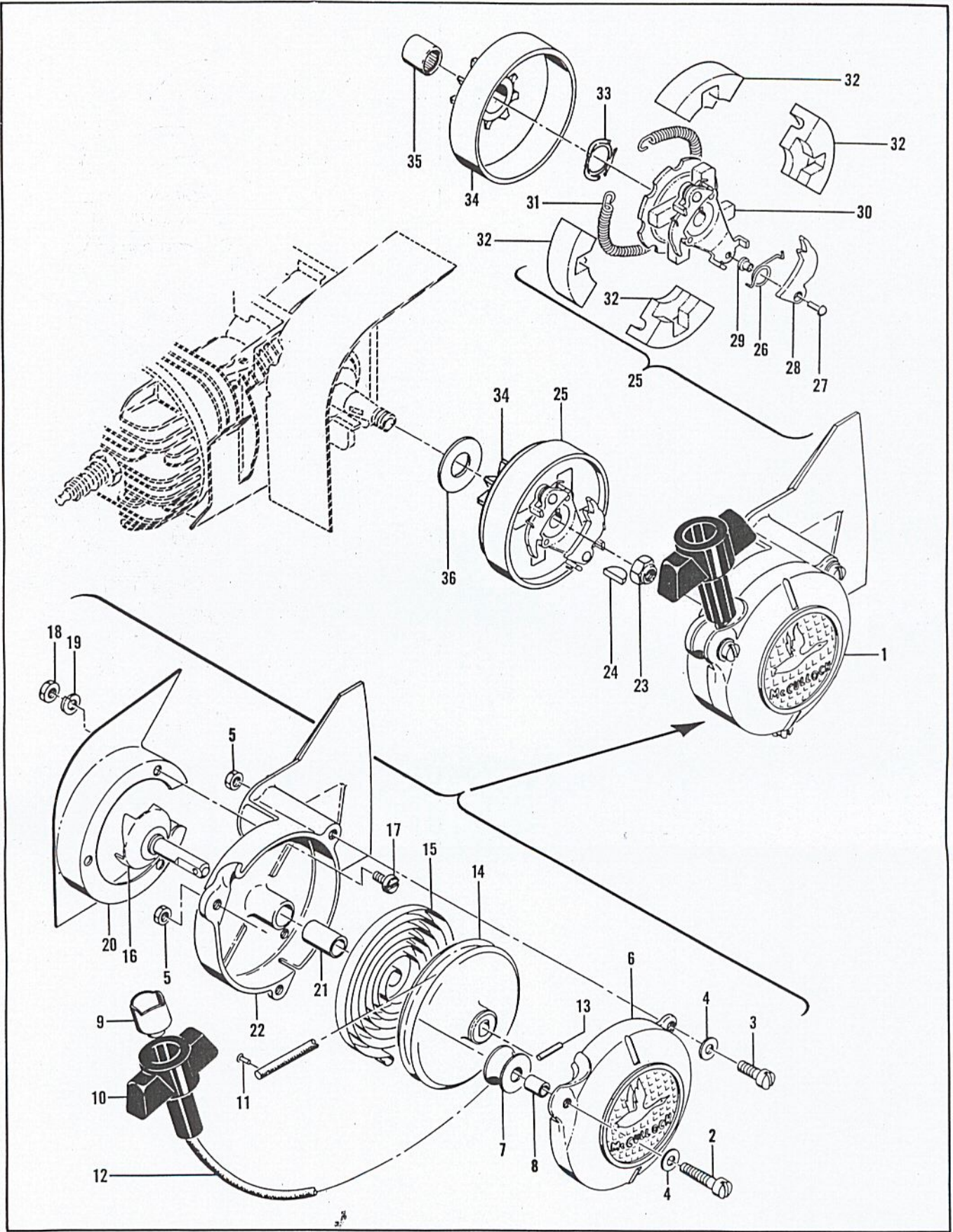


Figure 3. Starter and Clutch Assembly

FIGURE 3. STARTER AND CLUTCH ASSEMBLY

Index No.	Part Number	Nomenclature	Units Per Assy
3-1	51260A	Starter Assy	1
-2	101284	. Screw - Fil hd 10-14 x 1-1/8 in. lg	1
-3	102141	. Screw - Fil hd 10-24 x 5/8 in. lg	2
-4	102189	. Washer - No. 10	3
-5	101191	. Nut - Hex	3
-6	51262	. Cover - Starter	1
-7	51138	. Pulley - Starter rope	1
-8	103536	. Bearing - Pulley	1
-9	24818	. Cup - Starter handle	1
-10	24822	. Handle - Starter	1
-11	103697	. Rivet - Pan hd 0.093 in. dia x 3/8 in. lg	1
-12	51954	. Rope - Starter	1
-13	103047	. Pin	1
-14	51848	. Drum - Starter	1
-15	51665	. Spring - Starter rewind	1
-16	51923	. Shaft Assy - Starter	1
	51263	. Base Assy - Starter	1
-17	103714	. . Screw - Pan hd 8-32 x 1/4 in. lg	3
-18	100251	. . Nut - Hex	3
-19	102814	. . Washer - Lock	3
-20	51459	. . Cover - Sawdust shield	1
-21	103535	. . Bearing - Starter base	1
-22	51261	. . Base - Starter	1
-23	101391	Nut - Hex 3/8-24	1
-24	100199	Key - Woodruff	1
-25	51470A	Clutch Assy	1
-26	51910	. Spring	2
-27	104070	. Rivet - Round hd 0.156 in. dia x 1/2 in. lg	2
-28	51914	. Pawl	2
-29	51911	. Sleeve	2
-30	51917	. Rotor Assy	1
-31	51468	. Spring - Shoe retaining	1
-32	51464	. Shoe - Clutch	4
-33	103718	Spring - Thrust	1
-34	51793	Sprocket, Drum and Bearing Assy - 6 tooth x 1/2 in. pitch (green)	Optional
	51178	Sprocket, Drum and Bearing Assy - 7 tooth x 7/16 in. pitch (blue)	Optional
	51774	Sprocket, Drum and Bearing Assy - 7 tooth x 0.404 in. pitch (red)	Optional
-35	103688	. Bearing - Needle	1
-36	51420	Shroud - Inner sprocket	1

McCULLOCH SERIES "P" CHAIN ASSEMBLY

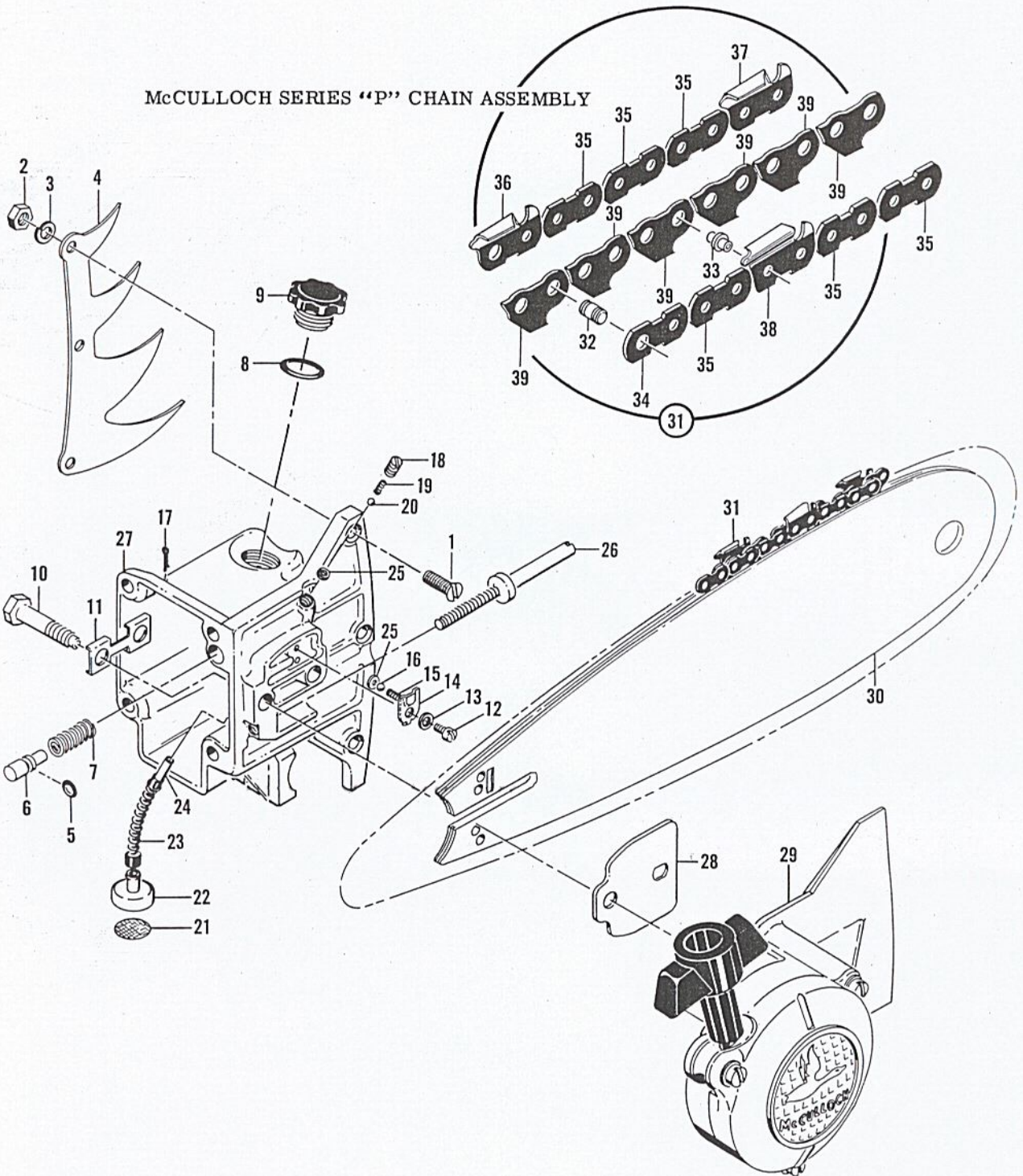


Figure 4. Chain Oiler, Bar and Chain

FIGURE 4. CHAIN OILER, BAR AND CHAIN

Index No.	Part Number	Nomenclature	Units Per Assy
4-1	102088	Screw - Flat hd 1/4-20 x 3/4 in. lg	3
-2	100152	Nut - Hex 1/4-20	3
-3	100153	Washer - Lock	3
-4	51443	Spike	1
	51938	Oiler Housing Assy	1
	51947	Piston Assy - Oiler	1
-5	103198	Packing - "O" ring	1
-6	51940	Piston - Oiler	1
-7	51946	Spring - Oiler	1
	47568	Filler Cap and Gasket Assy	1
-8	101148	Gasket - "O" ring	1
-9	52388	Cap - Oil filler	1
-10	51423	Screw - Blade clamp	2
-11	51439	Lockplate - Oiler housing	1
-12	102219	Screw - Fil hd 8-32 x 1/4 in. lg	1
-13	100057	Washer - Lock	1
-14	51941	Retainer - Oil pump	1
-15	51945	Spring - Inlet valve	1
-16	100549	Ball - Steel	1
-17	100010	Pin - Cotter	1
-18	51942	Plug - Pipe 1/16	1
-19	51944	Spring - Outlet valve	1
-20	100549	Ball - Steel	1
	51505	Weight Assy	1
-21	51506	Screen - Oil intake	1
-22	51509	Weight - Oil line	1
-23	28007	Hose - Flexible	1
-24	28042	Tube - Oiler	1
-25	51943	Seat - Oil pump ball	2
-26	51441	Screw - Blade adjustment	1
-27	51939	Housing - Oiler	1
-28	51437	Spacer - Bar	1
-29		Sprocket and Clutch Drum Assy (See figure 3)	1
*		Bar and Chain Assy	1
-30	51403A	Bar - 12 in.	1
	51405A	Bar - 18 in. (alternate)	1
	51407A	Bar - 24 in. (alternate)	1
	51409A	Bar - 30 in. (alternate)	1
-31		Chain - McCulloch Series "P"	1

*Order blade length desired.

Index	Nomenclature
-32	Typical McCulloch Series "P" Chain Assy
-33	Master Pin
-34	Rivet - Shoulder
-35	Master Side Link
-36	Side Link
-37	Master Link - Cutter L.H.
-38	Cutter Tooth - L.H.
-39	Cutter Tooth - R.H.
-39	Center Link

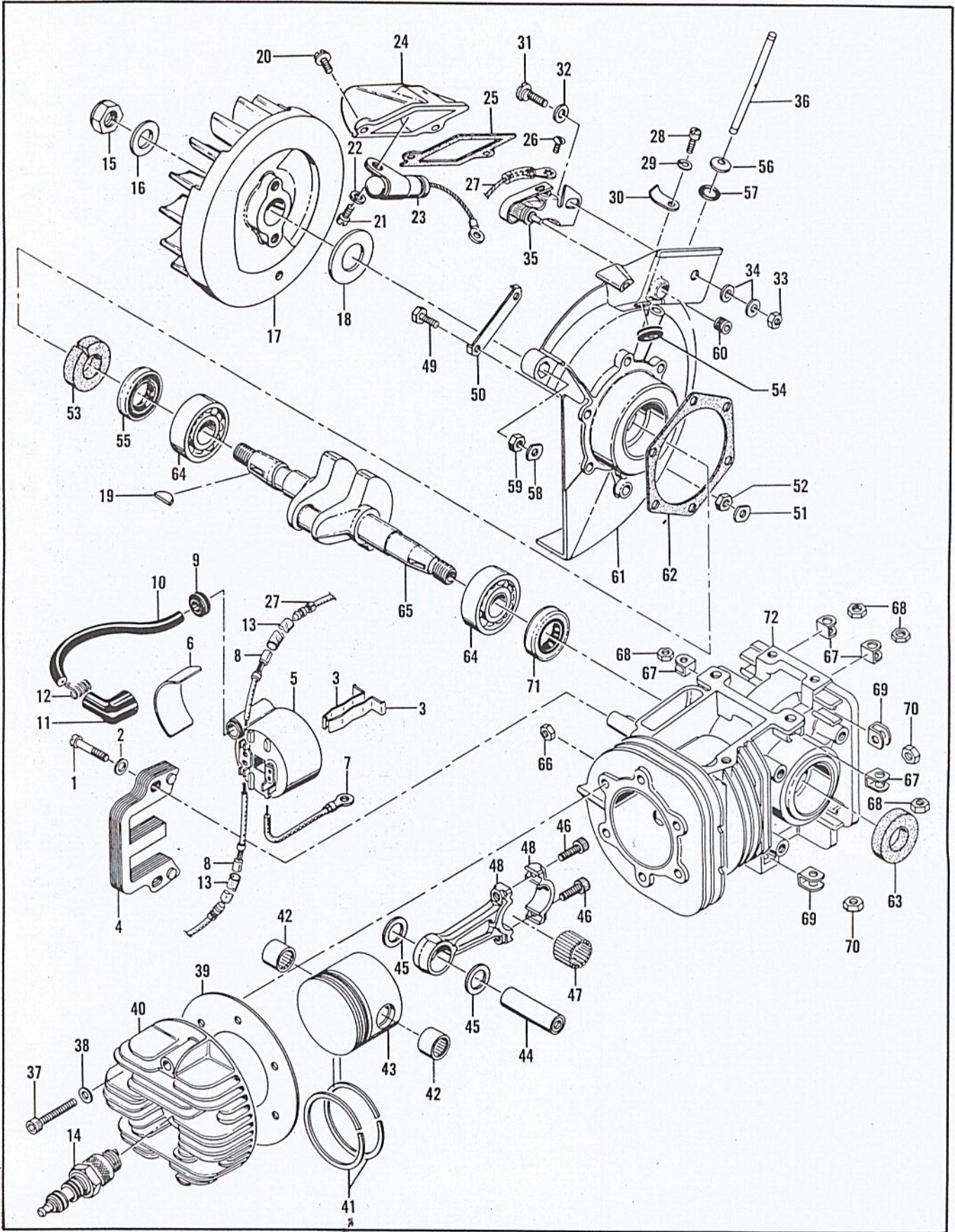


Figure 5. Powerhead Assembly

FIGURE 5. POWERHEAD ASSEMBLY

Index No.	Part Number	Nomenclature	Units Per Assy
5-1	101965	Screw - Fil hd 10-24 x 7/8 in. lg	2
-2	100003	Washer	2
	51495	Coil and Lamination Assy	1
-3	51253	Retainer - Coil	2
-4	51251	Lamination Assy - Coil	1
-5	51494	Coil and Terminal Assy	1
-6	18409A	Instruction Plate - Coil adjustment	1
-7	101883	Wire - Ground	1
-8	52064	Wire Assembly - Terminal	2
-9	100268	Grommet	1
-10	102160	Wire - Ignition	1
-11	102555	Cover - Spark plug connector	1
-12	102556	Connector - Spark plug	1
-13	51992	Sleeve	2
-14		Plug - Spark -14 MM	1
-15	101179	Nut - Hex 7/16	1
-16	101270	Washer - 7/16	1
-17	51203A	Flywheel Assy	1
-18	51987	Shield - Dirt	1
-19	100199	Key - Woodruff	1
-20	103464	Screw - Hex hd 10-24 x 3/4 in. lg (Sems)	2
	51963	Cover Assy - Breaker box	1
-21	100362	Screw - Fil hd 8-32 x 3/8 in. lg	1
-22	100057	Washer - Lock	1
-23	100075	Condenser Assy	1
-24	51299A	Cover - Breaker box	1
-25	51242	Gasket - Breaker box	1
-26	101207	Screw - Rd hd 6-32 x 1/4 in. lg	1
-27	51492A	Wire Assy - Primary	1
-28	100362	Screw - Fil hd	1
-29	100057	Washer - Lock	1
-30	51959	Spring - Ground	1
-31	24626	Screw - Eccentric	1
-32	100007	Washer	1
-33	101326	Nut - Hex 10-24	2
-34	100003	Washer	3
-35	51958	Breaker Assy	1
-36	51346	Pushrod - Breaker	1
-37	101563	Screw - Socket hd 10-24 x 1-1/4 in. lg	5
-38	24236	Washer	5
-39	51239	Gasket - Cylinder head	1
-40	51224	Head - Cylinder	1
	51210A	Piston Assy	1
-41	51747	Ring - Piston (Set of 2 rings) (Chrome top ring)	1
-42	101206	Bearing - Needle	2
-43		Piston	2
-44	51213	Pin - Piston	1
-45	51209	Washer - Thrust	2
	51219	Connecting Rod Assy	1
-46	101356	Screw - Socket hd 10-32 x 5/8 in. lg	2
-47	102742	Roller - Needle	22
-48	51220	Rod - Connecting	1
-49	102763	Screw - Hex hd 10-24 x 3/4 in. lg	6
-50	51297	Lockplate	3
-51	28935	Retainer	2
-52	101191	Nut - Hex 10-24	2
	52489	Crankcase Cover Assy	1
-53	36302	Felt - Oiler pushrod	1
-54	101230	Grommet	1
-55	102940	Seal - Spring load	1
-56	51909	Retainer	1
-57	103981	Seal - Pushrod	1
-58	28935	Retainer - Nut	1
-59	101191	Nut - Hex 10-24	1
-60	51960	Bushing	1
-61		Cover - Crankcase	1
-62	51240	Gasket - Crankcase cover	1
-63	51235	Seal - Sprocket	1
-64	100824	Bearing (ND 3203)	2
-65	51225	Crankshaft	1
	51936	Cylinder Assy - Crankcase	1
-66	101326	Nut - Hex 10-24	6
-67	28053	Retainer - No. 10 nut	4
-68	101326	Nut - Hex 10-24	4
-69	18556A	Retainer - 1/4 in. nut	6
-70	101143	Nut - Hex 1/4-20	6
-71	102940	Seal - Crankcase	1
-72		Cylinder - Crankcase	1

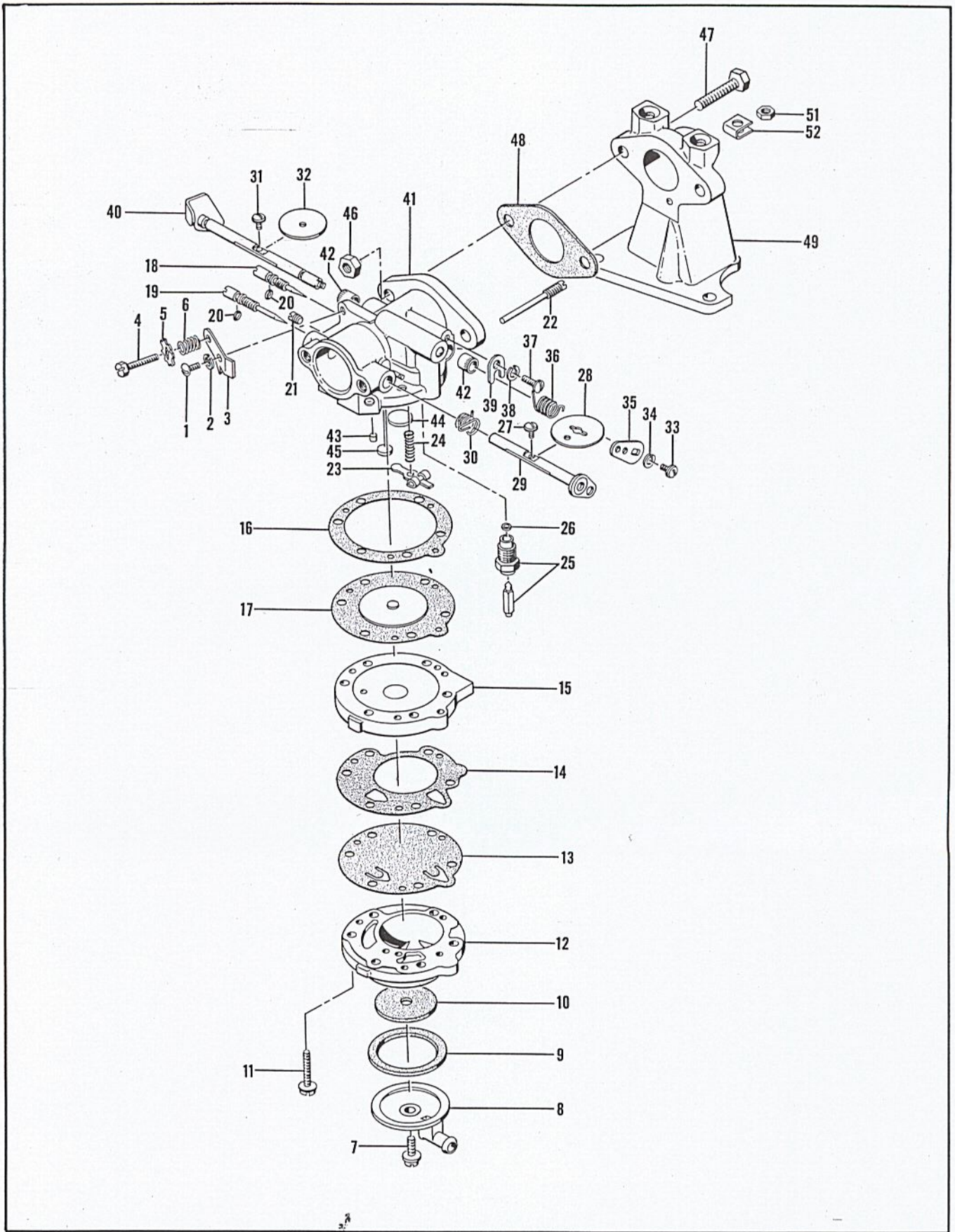


Figure 6. Carburetor and Adapter Assembly

FIGURE 6. CARBURETOR AND ADAPTER ASSEMBLY

Index No.	Part Number	Nomenclature	Units Per Assy
6	51907	Carburetor and Adapter Assy	1
	51548	. Carburetor Assy	1
-1	100362	. . Screw - Idle bracket retaining	1
-2	100252	. . Washer - Lock No. 8	1
-3	51706	. . Bracket - Idle screw	1
-4	103845	. . Screw - Hex hd 8-32 x 5/8 in. lg	1
-5	51549	. . Washer - Special	1
-6	51705	. . Spring - Idle speed regulating screw	1
-7	51701	. . Screw - Fuel strainer cover	1
-8	51599	. . Cover - Fuel strainer	1
-9	51704	. . Gasket - Fuel strainer cover	1
-10	51504	. . Element - Fuel filter	1
-11	51597	. . Screw - Fil hd 6-32 x 3/4 in. lg	6
-12	51596	. . Body - Fuel pump	1
-13	51595	. . Diaphragm - Fuel pump	1
-14	51594	. . Gasket - Fuel pump	1
-15	51592	. . Cover - Main fuel diaphragm	1
-16	51590	. . Diaphragm - Main fuel	1
-17	51591	. . Gasket - Main fuel diaphragm	1
-18	51702	. . Needle - Adjustment, idle mixture	1
-19	51712	. . Needle - Adjustment, main mixture	1
-20	51703	. . "O" Ring	2
-21	51589	. . Screw - Drain plug	1
-22	51710	. . Pin - Inlet lever fulcrum	1
-23	51709	. . Lever - Inlet control	1
-24	51711	. . Spring - Inlet control lever	1
-25	51707	. . Needle, Seat, and Gasket Assy	1
-26	51708	. . Gasket - Needle seat	1
-27	51721	. . Screw - Choke shutter (Sems)	1
-28	51587	. . Shutter - Choke	1
-29	51585	. . Shaft Assy - Choke	1
-30	51586	. . Spring - Torsion (choke shutter return)	1
-31	51721	. . Screw - Throttle shutter (Sems)	1
-32	51720	. . Shutter - Throttle	1
-33	51719	. . Screw - Throttle lever retaining	1
-34	100261	. . Washer - Lock No. 4	1
-35	51718	. . Lever - Throttle shaft	1
-36	51593	. . Spring - Torsion (throttle shutter return)	1
-37	51717	. . Screw - Throttle shaft clip	1
-38	100252	. . Washer - Lock No. 8	1
-39	51716	. . Clip - Throttle shaft	1
-40	51714	. . Shaft Assy - Throttle	1
-41	51588	. . Carburetor Body Assy (For service)	1
-42	51715	. . Bushing - Throttle shaft	2
-43	51582	. . Plug - Body channel cup	1
-44	51583	. . Plug - Body channel welch, 3/8 in.	1
-45	51584	. . Plug - Body channel welch, 1/4 in.	1
-46	103242	. . Nut - Hex 1/4-20	2
-47	100882	. . Screw - Hex hd 1/4-20 x 3/4 in. lg	2
-48	51161	. . Gasket - Carburetor-to-adapter	1
-49	51790	. . Adapter Assy - Carburetor	1

FIGURE 7. HANDLE AND CONTROL ASSEMBLY

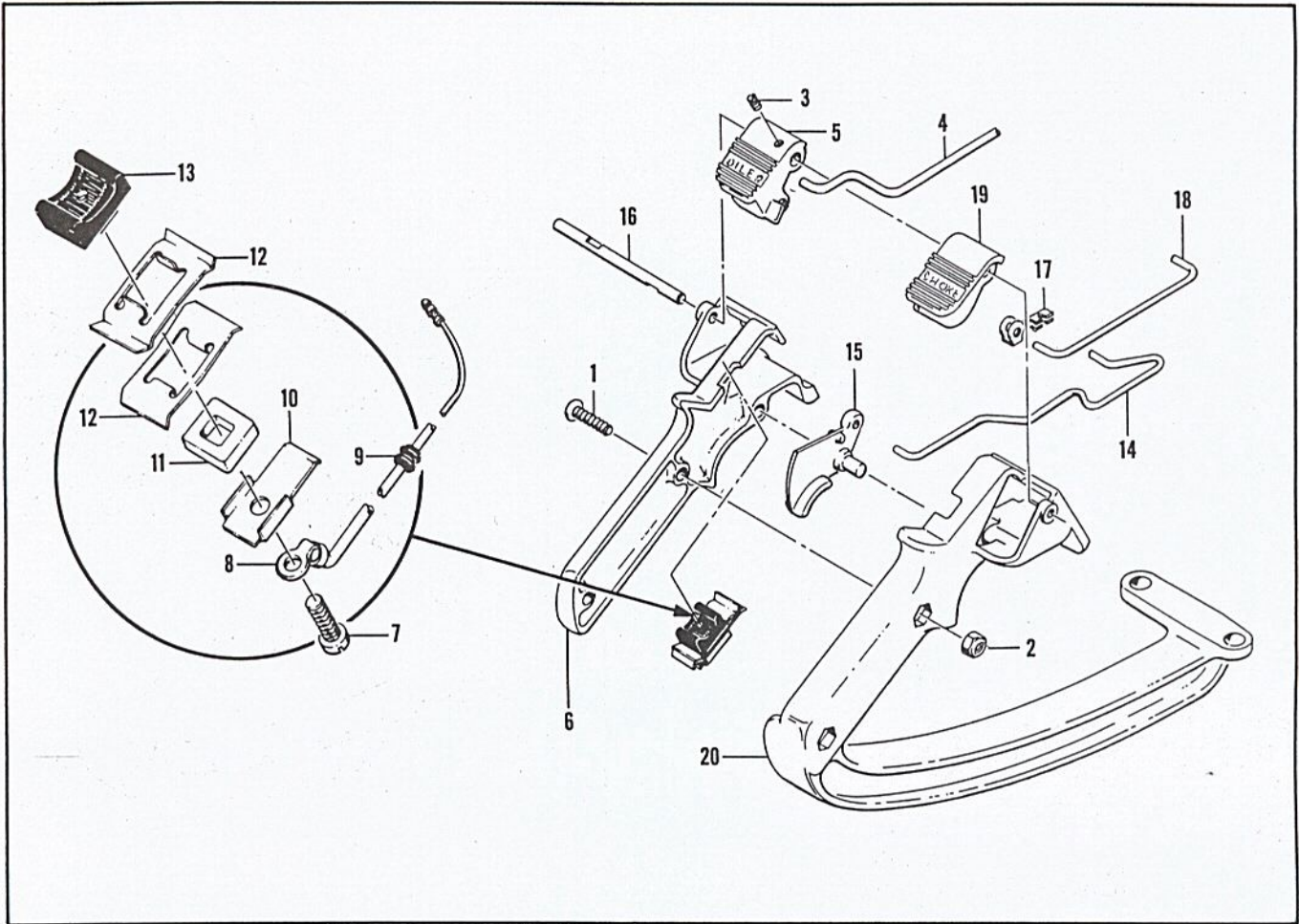


Figure 7. Handle and Control Assembly

Index No.	Part Number	Nomenclature	Units Per Assy
7	51937	Handle and Control Assy	1
-1	101060	. Screw Oval Hd - 10-24 x 1 in. lg	2
-2	101191	. Nut - Hex 10-24	2
-3	103724	. Screw - Set	1
-4	51857	. Pushrod - Oiler	1
-5	51771	. Button - Oiler	1
-6	51266	. Handle - Left-hand	1
	51566	. Switch Assy	1
-7	100362	. Screw - Fil hd 8-32 x 3/8 in. lg	1
-8	51492A	. Wire Assy - Ignition	1
-9	101230	. Grommet	1
-10	51279	. Contact - Stop switch	1
-11	51555	. Insulator	1
-12	51554	. Detent - Stop switch	2
-13	51553	. Button - Stop switch	1
-14	51559	. Pushrod - Throttle	1
-15	51267	. Trigger	1
-16	51344	. Shaft - Oiler	1
-17	36496	. Clip	1
-18	51551	. Pushrod ^a - Choke	1
-19	51269	. Button - Choke	1
-20	51927	. Handle - Right-hand	1