

Illustrated Parts List

MODEL

D36

McCULLOCH CHAIN SAW

(#50222 D36-1 JULY 1958①)

McCULLOCH CORPORATION

6101 West Century Blvd., Los Angeles 45, Calif.

ILLUSTRATIONS

	Page
Figure 1. Engine Exploded View - General	2
Figure 2. Starter and Breaker Assembly	4
Figure 3. Air Box and Carburetor Assembly	6
Figure 4. Powerhead Assembly	8
Figure 5. Chain and Bar Assembly	10
List of Accessories	11

NOTE: A complete parts price list is available upon request.

The following pages contain an illustrated parts list for the Model D-36 Chain Saw. Due to small differences between saws, it is important that the Serial Number of your saw be included whenever spare parts are ordered. This will assure receiving the proper parts from your dealer.

PRINTED IN U.S.A.

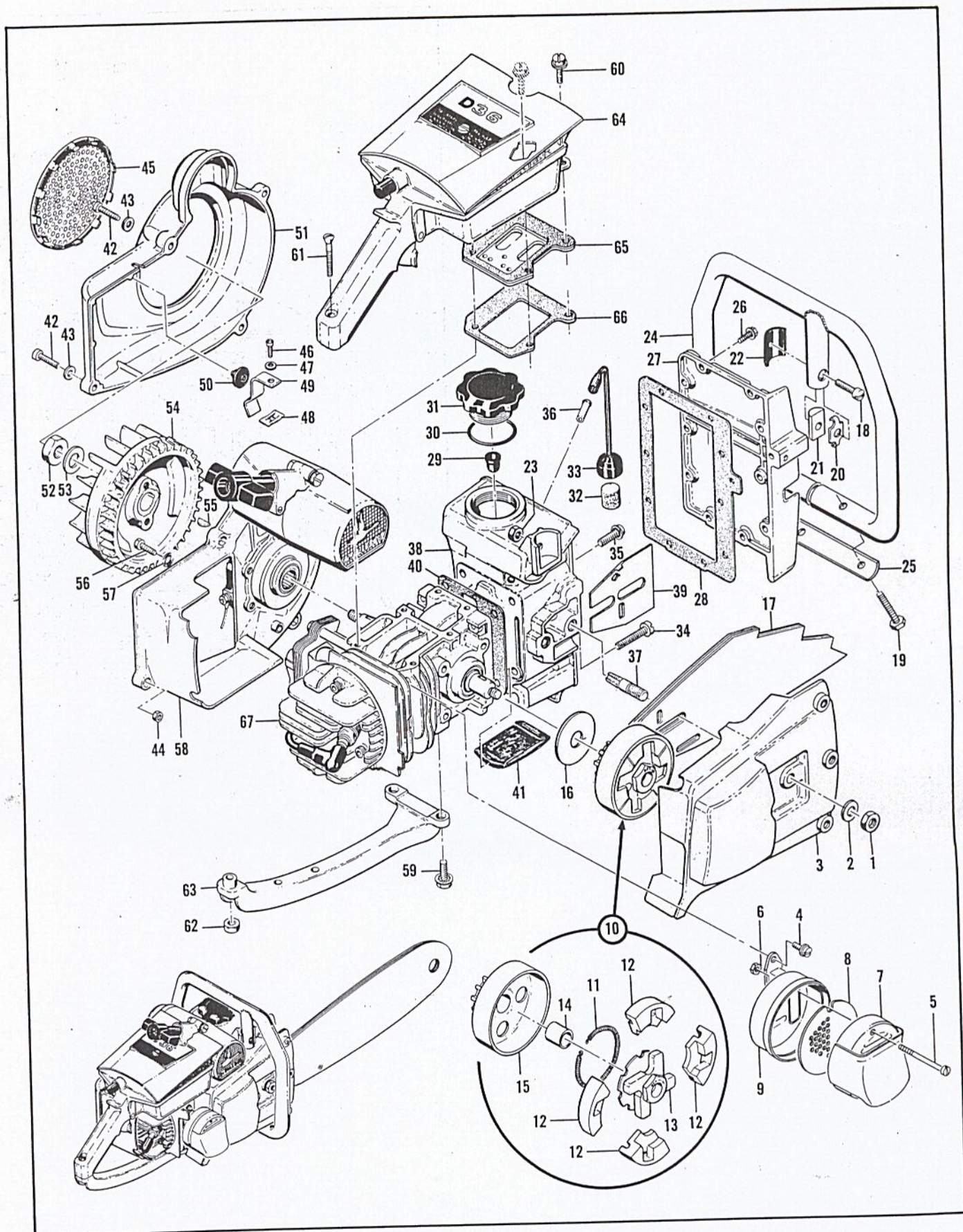


Figure 1. Engine Exploded View - General

FIGURE 1. ENGINE EXPLODED VIEW — GENERAL

Index No.	Part Number	Nomenclature	Units Per Assy
1	103729	Nut - Hex 3/8-24	2
2	100006	Washer - Plain 3/8	2
3	50211	Guard - Clutch	1
4	102388	Screw - Fil hd 10-24 x 5/8 in. lg	2
	51966	Muffler Assy	1
5	103361	. Screw - Fil hd 10-24 x 1-5/8 in. lg	2
6	101191	. Nut - Hex 10-24	2
7	51979	. Top Assy - Muffler	1
8	51968	. Baffle - Muffler	1
9	51975	. Bottom Assy - Muffler	1
10	50060	Clutch Assy	1
11	51468	. Spring - Shoe	1
12	51464A	. Shoe - Clutch	4
13	50144	. Rotor Assy - Clutch	1
	50129	Sprocket, Drum and Bearing Assy	1
14	50128	. Bushing	1
15	51775A	. Sprocket and Drum Assy	1
16	50132	Washer - Sprocket Assy	1
17	No Number	Chain and Bar Assy (See figure 5)	1
18	100416	Screw - Fil hd 1/4-20 x 1 in. lg	1
19	102128	Screw - Hex hd 1/4-20 x 1-1/2 in. lg	2
20	50064	Washer - Square	1
21	50063	Saddle	1
22	50062	Insulator	3
23	101143	Nut - Hex 1/4-20	3
24	50212	Frame Assy	1
25	50215	Clamp - Frame	1
26	103859	Screw - Hex hd 10-24 x 3/4 in. lg (SEMS)	10
27	50114	Cover - Fuel tank	1
28	50034	Gasket - Fuel tank	1
	52136	Cap Assy - Fuel	1
29	47252A	. Valve	1
30	101348	. "O" ring	1
31	52137	. Cap - Fuel	1
32	50379	Filter	1
33	50082	Hose - Flex	1
34	36151B	Screw - Blade adjusting	1
35	50340	Screw Assy - Sealing	4
	50111	Fuel Tank Assy	1
36	28042	. Nipple - Fuel hose	1
37	50051	. Stud - Mounting	2
38		. Fuel Tank	1
		(Order Fuel Tank Assy #50111)	
39	50352	Cover Bar	1
40	50141	Gasket - Bottom	1
41	50138	Pickup - Condensate oil	1
42	102761	Screw - Fil hd 10-24 x 7/8 in. lg	4
43	102189	Washer - Plain	4
44	101191	Nut - Hex 10-24	2
45	51207	Guard - Sawdust	1
	50029	Fan Housing Assy	1
46	101454	. Screw - Pan hd 8 x 3/8 in. lg	1
47	100080	. Washer - No. 8	1
48	102399	. Speednut	1
49	50109	. Spring - Switch	1
50	50110	. Button - Switch	1
51	50028	. Housing - Fan	1
52	101179	Nut - Hex 7/16	1
53	101270	Washer - Special	1
54	50003	Flywheel Assy	1
55	100199	Key - Woodruff No. 3	1
56	102763	Screw - Hex hd 10-24 x 3/4 in. lg	6
57	103744	Washer - Sealing	6
58	No Number	Starter and Cover Assy (See figure 2)	1
59	100882	Screw - Hex hd 1/4-20 x 3/4 in. lg	2
60	103464	Screw - Hex hd 10-24 x 3/4 in. lg (SEMS)	2
61	104155	Screw - Oval hd 10-24 x 1-1/2 in. lg	1
62	101191	Nut - Hex 10-24	1
63	50041	Brace - Handle	1
64	No Number	Air Box and Carburetor Assy (See figure 3)	1
65		Reed Plate Assy (See figure 3)	1
66	50032	Insulator - Reed plate (Reed plate and engine)	1
67	No Number	Powerhead Assy	1

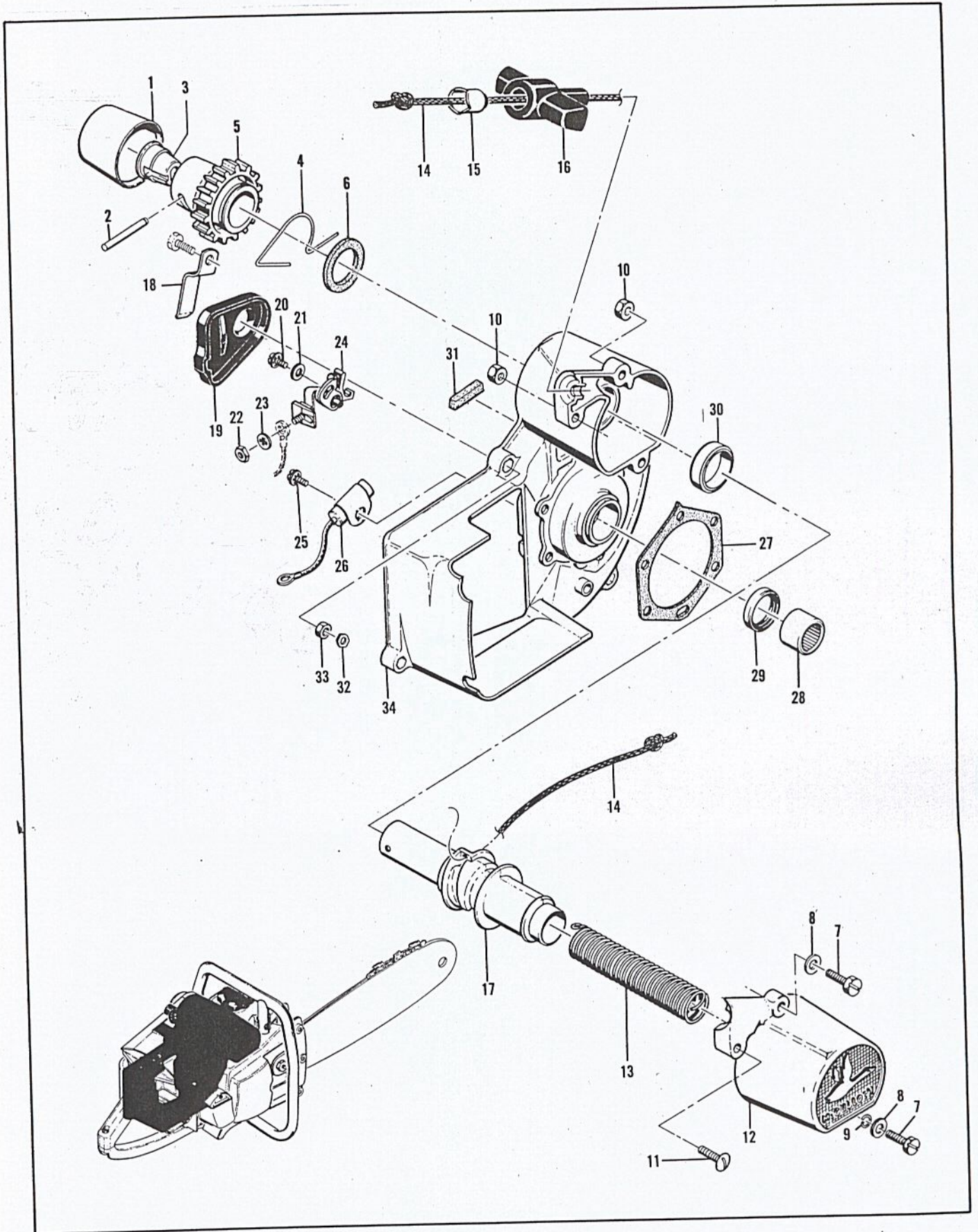


Figure 2. Starter and Breaker Assembly

#50222
7-58 ©

FIGURE 2. STARTER AND BREAKER ASSEMBLY

Index No.	Part Number	Nomenclature	Units Per Assy
1	50069	Cover - Dust	1
2	50119	Pin - Driving	1
3	50068	Plug - Starter	1
4	50079	Spring - Detent	1
5	50065	Pinion Starter	1
6	50066	Seal - Starter	1
7	102761	Screw - Hex hd 10-24 x 3/4 in. lg	2
8	102189	Washer - Plain	2
9	50351	Ring - Retaining	1
10	101191	Nut - Hex 10-24	2
11	101060	Screw - Oval hd 10-24 x 1 in. lg	1
12	50107	Cover Assy - Starter	1
13	50067	Spring - Rewind	1
14	50056	Rope - Starter	1
15	24818	Cup - Starter handle	1
16	50356	Handle - Starter	1
17	50010	Drum - Starter	1
18	50175	Retainer - Breaker box cover	1
19	50049	Cover - Breaker box	1
20	103672	Screw - 8-32 x 1/2 in. lg (SEMS)	1
21	100080	Washer - No. 8	1
22	100251	Nut - 8-32	1
23	100057	Lockwasher - No. 8 internal	1
24	50076	Breaker Assy	1
25	103672	Screw - 8-32 x 1/2 in. lg (SEMS)	1
26	50074	Condenser	1
27	51240	Gasket - Crankcase	1
	50220	Cover - Crankcase Assy	1
28	104129	. Bearing - Needle	1
29	104128	. Seal - Oil	1
30	50176	. Bushing - Starter (Teflon)	1
31	11100A	. Wiper - Felt	1
32	28935	. Retainer - Nut	3
33	101191	. Nut - Hex 10-24	3
34	50354	. Cover - Crankcase	1

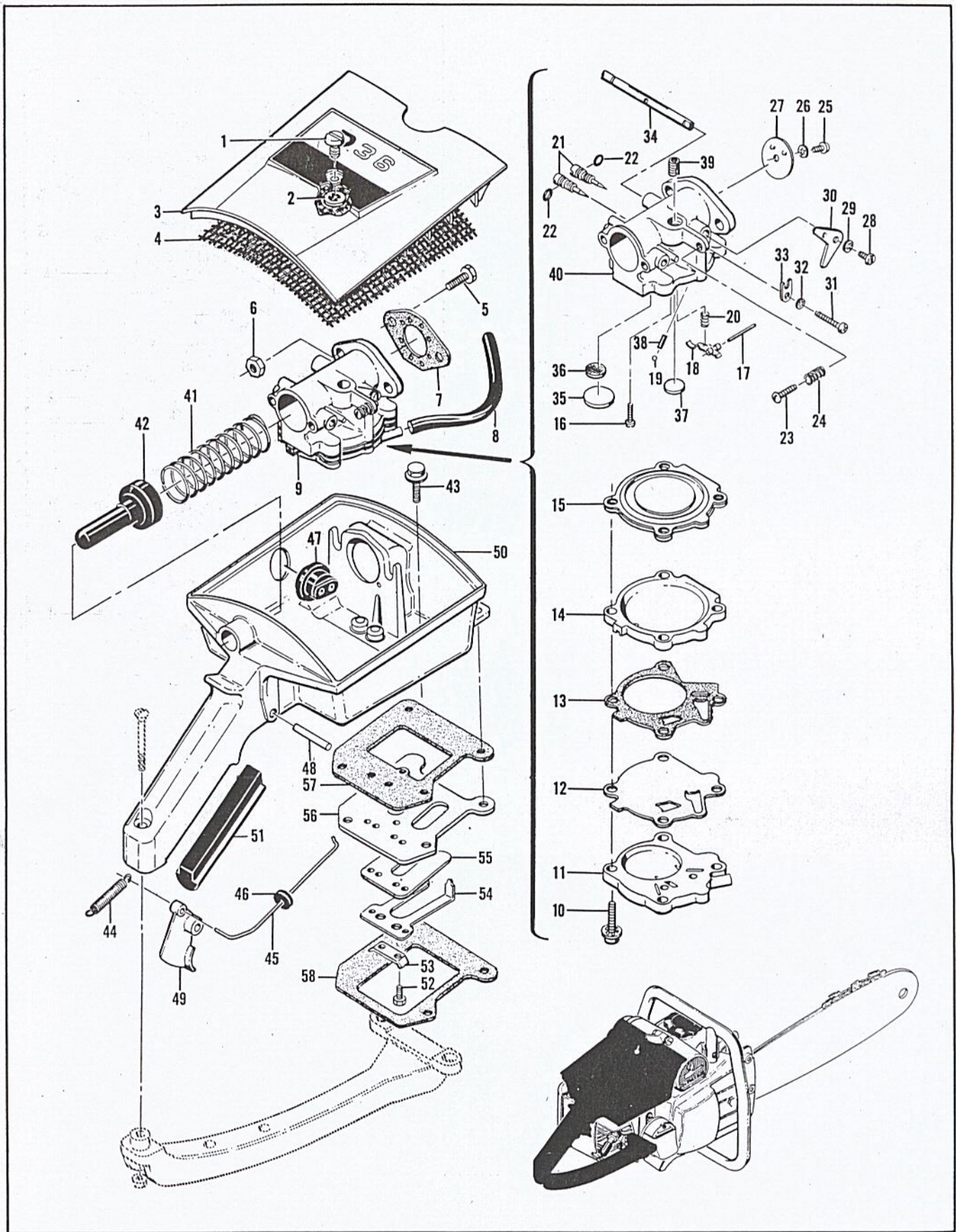


Figure 3. Air Box and Carburetor Assembly

FIGURE 3. AIR BOX AND CARBURETOR ASSEMBLY

Index No.	Part Number	Nomenclature	Units Per Assy
	50104	Cover Assy - Cleaner	1
1	51351	. Screw - Special	1
2	103741	. Speednut	1
3		. Cover - Air cleaner (Order Cover Assy #50104)	1
4	51157	Screen - Air cleaner	1
5	100882	Screw - Hex hd 1/4-20 x 3/4 in. lg	2
6	103242	Nut - Hex 1/4-20	2
7	50123	Gasket - Carburetor	1
8	50097	Hose - Fuel	1
9	50070	Carburetor and Fuel Pump Assy	1
10	104138	. Screw - Hex hd (SEMS) 10-24 x 7/8 in. lg.....	4
11	55171	. Body - Fuel pump	1
12	55070	. Diaphragm - Fuel pump	1
13	55069	. Gasket - Fuel pump	1
14	55068	. Plate Diaphragm	1
15	55067	. Diaphragm	1
16	103996	. Screw - Pan hd 4-40 x 3/8 in. lg	1
17	55065	. Pin - Inlet lever	1
18	55066	. Lever - Inlet control	1
19	100302	. Ball 1/8 in. dia	1
20	55084	. Spring - Inlet lever	1
21	55090	. Needle - Metering	2
22	104001	. "O" ring	2
23	104104	. Screw - Rd hd 8-32 x 5/8 in. lg.....	1
24	11361A	. Spring - Idle screw	1
25	104000	. Screw - Pan hd 4-40 x 1/4 in. lg	1
26	103540	. Lockwasher - Internal	1
27	55085	. Plate - Butterfly	1
28	104000	. Screw - Pan hd 4-40 x 1/4 in. lg	1
29	103540	. Lockwasher - Internal	1
30	50103	. Arm - Throttle shaft	1
31	102219	. Screw - Fil hd 8-32 x 1/4 in. lg	1
32	100252	. Lockwasher - No. 8	1
33	55082	. Clip - Throttle shaft	1
34	50350	. Shaft - Throttle	1
	50101	. Body - Carburetor Assy	1
35	104145	. . Plug - Expansion 3/4"	1
36	55063	. . Filter - Carburetor	1
37	102758	. . Plug - Expansion 1/2"	1
38	55119	. . Seat - Ball check	1
39	101616	. . Insert - Tap lock 1/4-20	1
40		. . Carburetor Body (Order Carburetor Assy #50101)	1
41	50147	Spring - Choke	1
42	50148	Button - Choke	1
43	104138	Screw - 10-24 x 7/8 in. lg (SEMS)	2
	50087	Air Box Assy.....	1
44	36499	. Spring - Throttle	1
45	50035	. Rod - Throttle	1
46	104140	. Grommet - Throttle	1
47	50089	. Grommet - Carburetor controls	1
48	104137	. Pin - Groove	1
49	50091	. Trigger	1
50	50088	. Box - Air	1
51	50218	Grip - Handle	1
	50044	Reed Plate Assy	1
52	103748	. Screw - Hex hd 8-32 x 1/2 in. lg	2
53	51480	. Lockplate	1
54	51810	. Guard - Reed	1
55	51809	. Reed	1
56	50027	. Plate - Reed	1
57	50026	Gasket - Air box	1
58	50032	Insulator - Reed plate	1

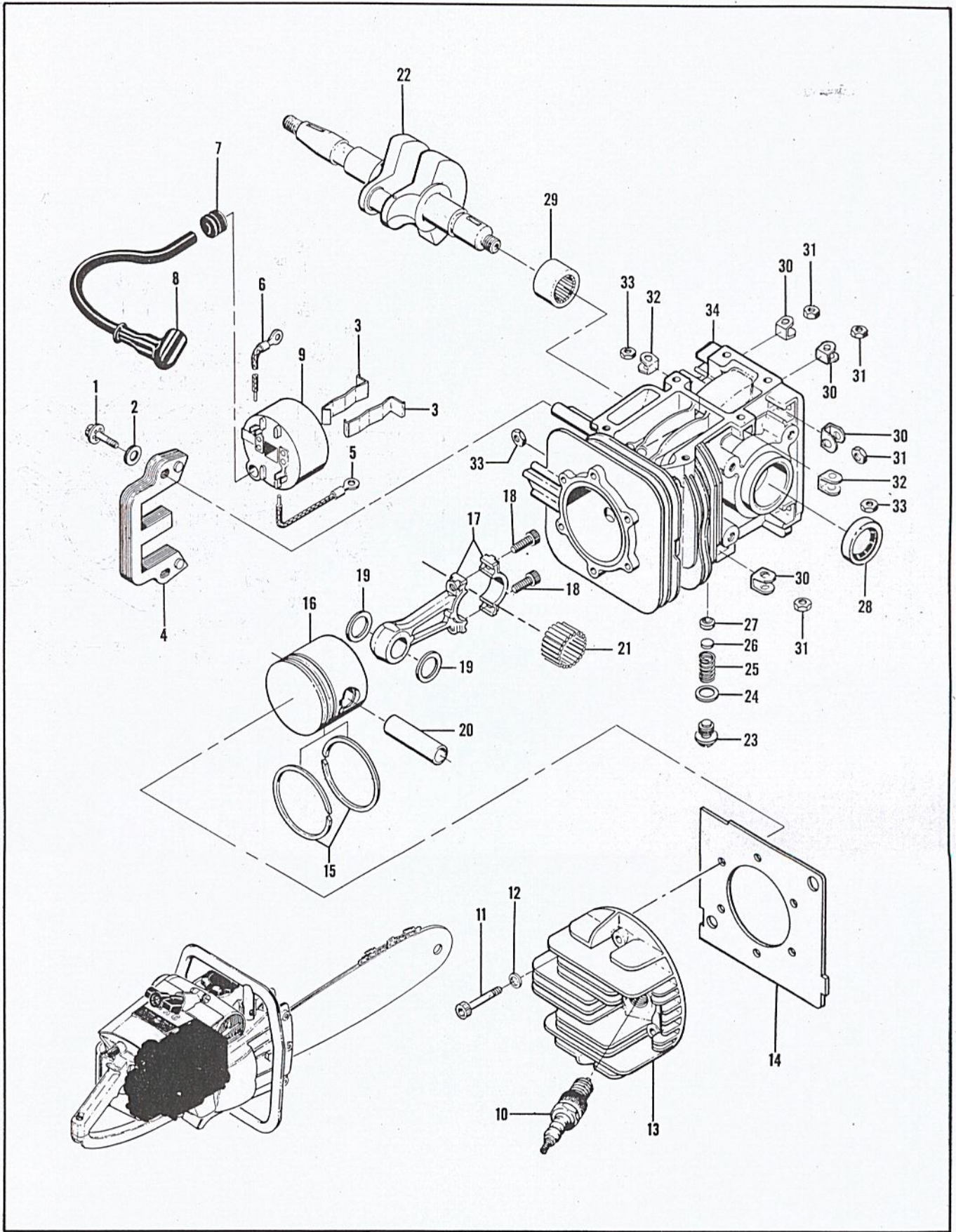


Figure 4. Powerhead Assembly

FIGURE 4. POWERHEAD ASSEMBLY

Index No.	Part Number	Nomenclature	Units Per Assy
1	104138	Screw - Fil hd 10-24 x 7/8 in. lg (SEMS)	2
2	102189	Washer - Plain	2
	50057	Coil and Lamination Assy	1
3	51253	. Retainer - Coil	2
4	51251	. Lamination Assy	1
	50121	. Coil and Terminal Assy	1
5	101883	. Wire Assy - Ground	1
6	50137	. Wire Assy - Primary	1
7	100268	. Grommet	1
8	50120	. Wire Assy - Spark plug	1
9		. Coil Assy (Order Part No. 50121)	1
10		Plug - Spark 14MM	1
11	101563	Screw - Socket hd 10-24 x 1.25 in. lg	6
12	24236	Washer - Plain #10	6
13	55146	Head - Cylinder	1
14	55012B	Gasket - Cylinder head	1
	55007	Piston Assy	1
15	55123	. Ring - Piston (Set of 2 rings - chrome top ring)	1
16		. Piston (Order Piston Assy 55007)	1
17	55009	Connecting Rod Assy	1
18	101356	. Screw - Socket hd 10-32 x 3/4	2
19	51209	Washer - Spacer	2
20	50207	Pin - Piston	1
21	102742	Roller - Needle	24
22	50210	Crankshaft	1
	50216	Cylinder Assy - Crankcase	1
23	50092	. Body - Valve	1
24	50126	. Gasket - Valve	1
25	50173	. Spring - Valve	1
26	50174	. Disk - Valve	1
27	50171	. Seat - Valve	1
28	104128	. Seal - Oil	1
29	104129	. Bearing - Needle	1
30	18556A	. Retainer - Nut	6
31	101143	. Nut - Hex 1/4-20	6
32	28053	. Retainer - Nut	2
33	101326	. Nut - Hex 10-24	8
34		. Cylinder - Crankcase Assy (Order Part No. 50216)	1

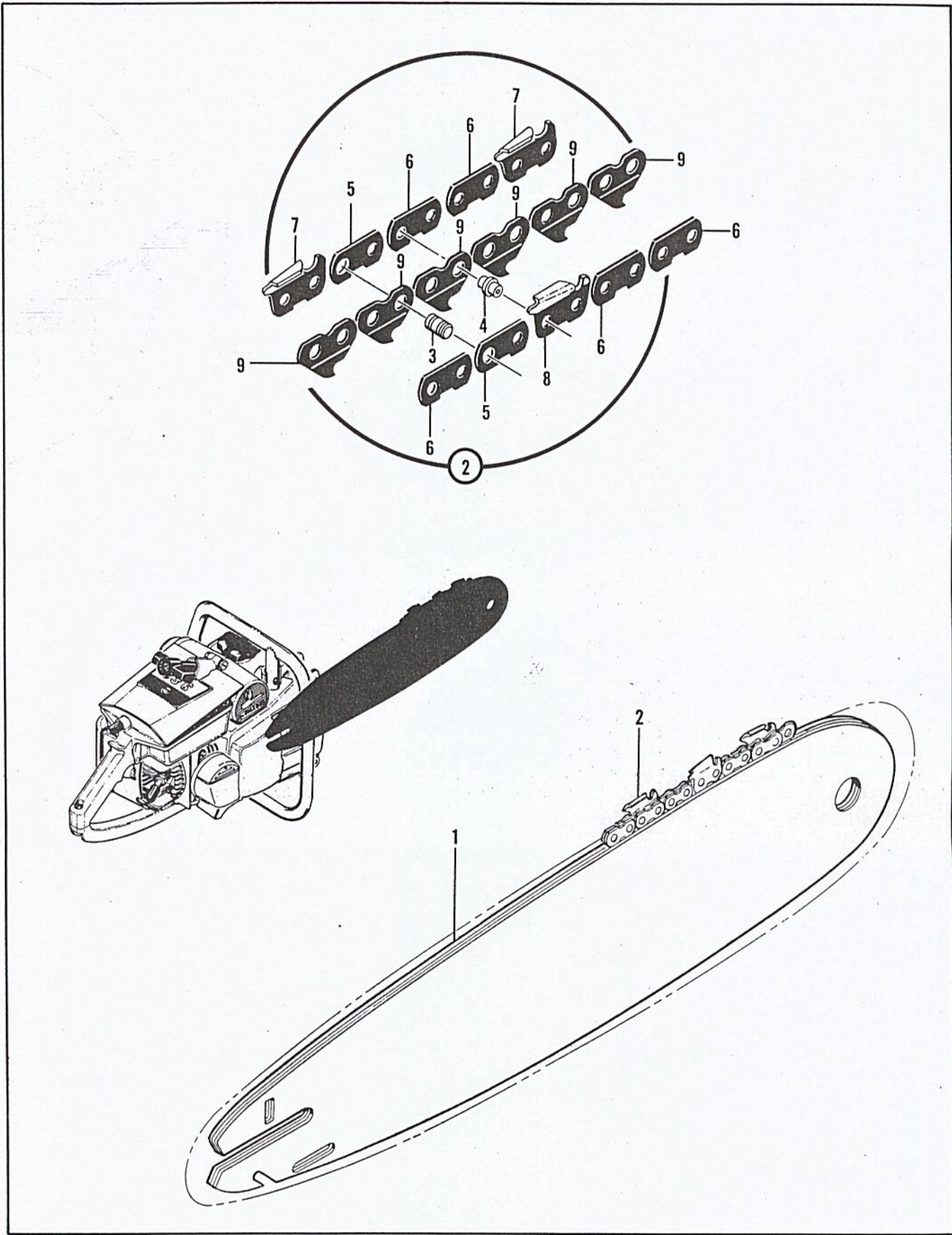


Figure 5. Chain and Bar Assembly

FIGURE 5. CHAIN AND BAR ASSEMBLY

Index No.	Part Number	Nomenclature	Units Per Assy
1	50361	Bar - Flame hard - .185 inch wide - 12''	1
	51403B	Bar - Hard faced - .185 inch wide - 12''	1
	52553	Bar - Flame hard - .170 inch wide - 18''	1
	51405A	Bar - Hard faced - .185 inch wide - 18''	1
	51407A	Bar - Hard faced - .185 inch wide - 24''	1
	51409A	Bar - Hard faced - .185 inch wide - 30''	1
2		Typical McCulloch "P" Series Chain Assy	1
3		. Master Pin	
4		. Shoulder Rivet	
5		. Master Link	
6		. Side Link	
7		. Cutter - L.H.	
8		. Cutter - R.H.	
9		. Center Link	

TOOLS AND ACCESSORIES

Part Number	Nomenclature
*51445	Wrench and Screwdriver Combination
*50221	Instruction Manual
*50353	. Operation and Maintenance Manual
*50222	. Illustrated Parts List
51654	Spike
36248	Wrench - Spark plug
18413A	Feeler Gauge
102094	Chain Grinding Fixture
102449	McCulloch Yellow Paint (12 oz spray bomb type)
102057	McCulloch Oil (1 quart)
102664	McCulloch Oil (12 oz can)
103736	File - Round 7/32 in. diameter
104003	File - Round 3/16 in. diameter

*Indicates items furnished with each saw