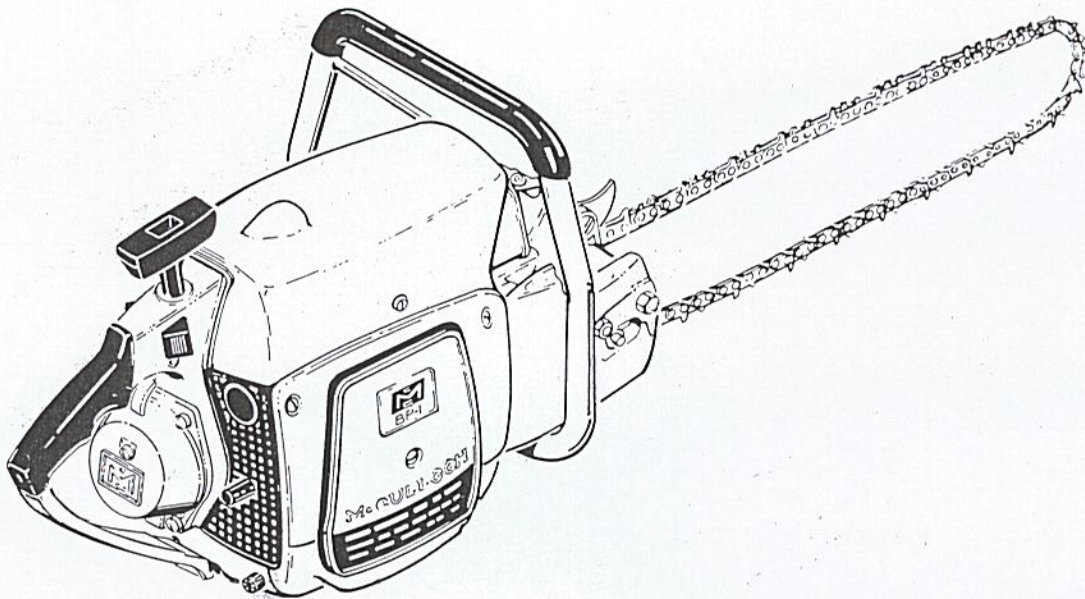


ILLUSTRATED PARTS LIST

OCTOBER 1962



The following pages contain an illustrated parts list for the Model BP-1 Chain Saw. Due to small differences between saws, it is important that the Serial Number of your saw be included whenever spare parts are ordered. This will assure receiving the proper parts from your dealer.

	Page
Figure 1. Engine Exploded View	2
Figure 2. Carburetor - Airbox Assembly	4
Figure 3. Transmission Assembly	6
Figure 3A. Chain Grinder Assembly, BP-1 Engine	8
Figure 4. Powerhead Assembly	10
Figure 5. Controls	12
Figure 6. Starter Assembly - Breaker Points	14
Figure 7. Fuel System	16
Figure 8. Chain, Bar and Bar Adjustment	18



MCCULLOCH CORPORATION
8101 West Century Boulevard,
Los Angeles 45, California

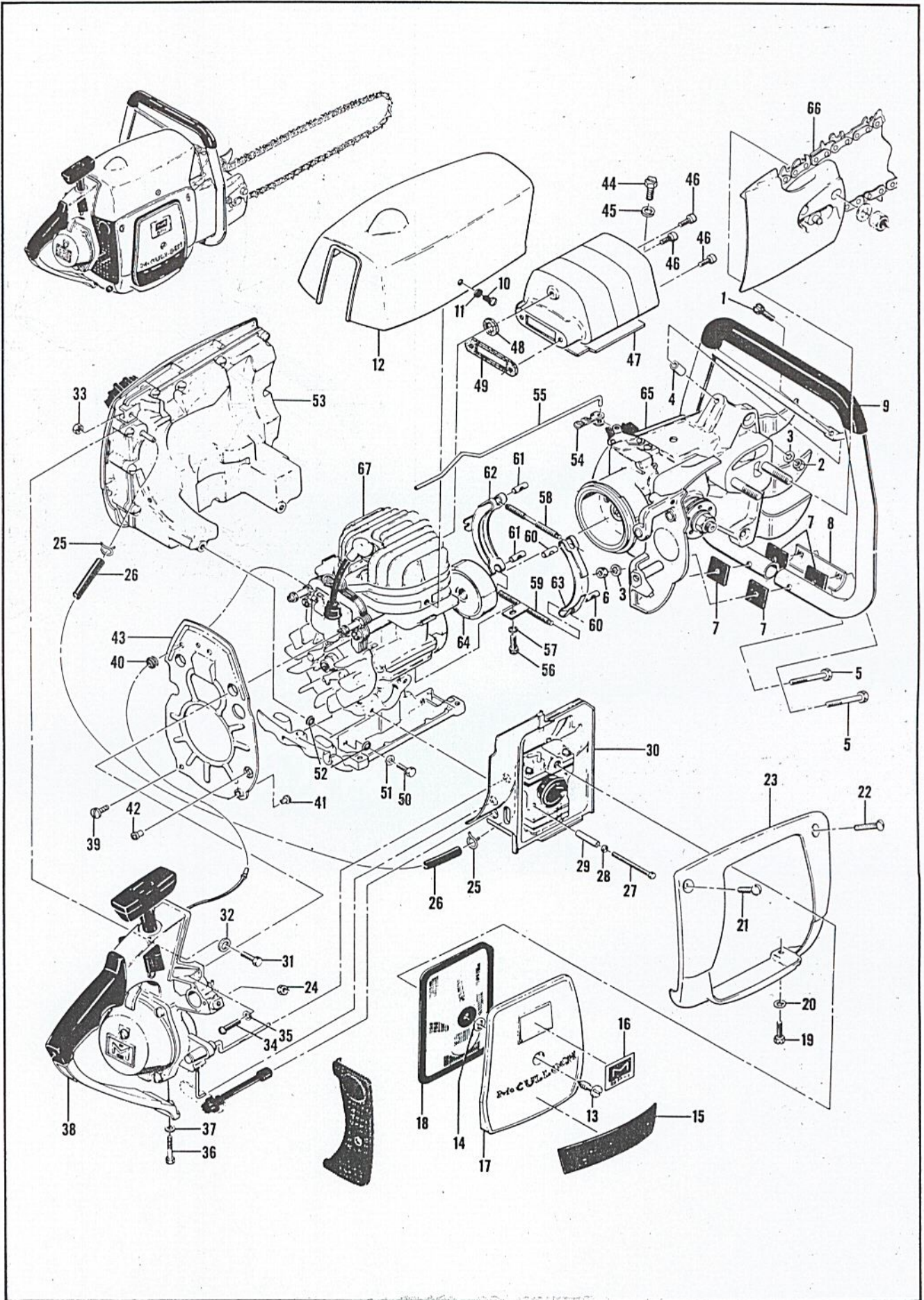


Figure 1. Engine Exploded View

#59292A
10-62

FIGURE 1. ENGINE EXPLODED VIEW

Index No.	Part Number	Nomenclature	Units Per Assy
1	102764	Screw - Hex hd 10-24 x 1-1/4 in. lg	1
2	101326	Nut - Hex 10-24	1
3	100153	Washer - Lock #10	3
4	59488	Spacer - Frame base	1
5	102130	Screw - Hex hd 1/4-20 x 1-1/2 in. lg	2
6	101143	Nut - Hex 1/4-20	2
7	50062	Insulator - Frame	4
8	52411	Plate - Reinforcing	1
9	59242A	Frame Assembly	1
10	102500	Screw - Pan hd 10-24 x 1/2 in. lg	2
11	102189	Washer - Plain #10	2
12	59609	Shroud - Cylinder	1
	59176	Cover Assembly - Air cleaner	1
13	59603	. Screw - Air cleaner	1
14	103741	. Nut - Speed	1
15	59274	. Plate - Instructions	1
16	59412	. Plate - Name	1
17		. Cover - Air cleaner(Not available-Order Cover Assy #59176)	1
18	59236A	Screen Assembly - Air cleaner	1
19	104950	Screw - Hex hd 10-24 x 5/8 in. lg	2
20	100240	Washer - Lock #10	2
21	101386	Screw - Oval hd 10-24 x 5/8 in. lg	1
22	101385	Screw - Oval hd 10-24 x 7/8 in. lg	1
23	59036	Panel - Side	1
24	101326	Nut - Hex 10-24	1
25	104857	Clamp - Fuel hose	2
26	59177	Hose - Fuel	1
27	104745	Screw - Hex hd 10-24 x 2 in. lg	2
28	55636	Washer - Insulating	2
29	59134A	Tube - Insulating	2
30		Carburetor - Airbox components (See figure 2)	1
31	102388	Screw - Hex hd 10-24 x 5/8 in. lg	1
32	100003	Washer - Plain #10	1
33	101326	Nut - Hex 10-24	1
34	102141	Screw - Fil hd 10-24 x 5/8 in. lg	2
35	101194	Washer - Lock #10	2
36	104839	Screw - Hex hd 10-32 x 1 in. lg	1
37	100003	Washer - Plain #10	1
38		Controls - Breaker points - Starter (See figures 5 and 6)	1
39	104915	Screw - Pan hd #7 x 3/8 in. lg self tapping	1
	59653	Cover Assembly - Fan	1
40	104140	. Grommet	1
41	110026	. Eyelet	1
42	110003	. Bearing - Nylon	1
43		. Cover - Fan (Not available-Order Fan Cover Assy #59653)	1
44	102762	Screw - Hex hd 10-24 x 1/2 in. lg	1
45	24236	Washer - Special #10	1
46	104849	Screw - Socket hd 10-24 x 1/2 in. lg	3
47	59475C	Muffler Assembly	1
48	55213	Washer - Special	1
49	59300A	Gasket - Muffler	1
50	102761	Screw - Hex hd 10-24 x 7/8 in. lg	2
51	100003	Washer - Plain #10	2
52	59239	Washer - Insulating	4
53		Fuel Tank Assembly (See figure 7)	1
54	36496	Clip - Oiler rod return	1
55	59286	Rod - Oiler control	1
56	103061	Screw - 8-32 x 3/8 in. lg (SEMS)	1
57	100080	Washer - Plain #8	1
58	59228	Screw - Clamp	1
59	59490	Bracket and Screw Assembly	1
60	59229	Nut - Clamp right hand	2
61	59230	Nut - Clamp left hand	2
62	59482	Body Assembly - Clamp	1
63	59484	Body - Clamp	1
64	59427B	Clutch Assembly (See figure 4)	1
65	59720	Transmission Assembly (See figure 3)	1
66		Chain, Bar and Bar Adjustment (See figure 8)	1
67		Powerhead (See figure 4)	1

#59292A
10-62①

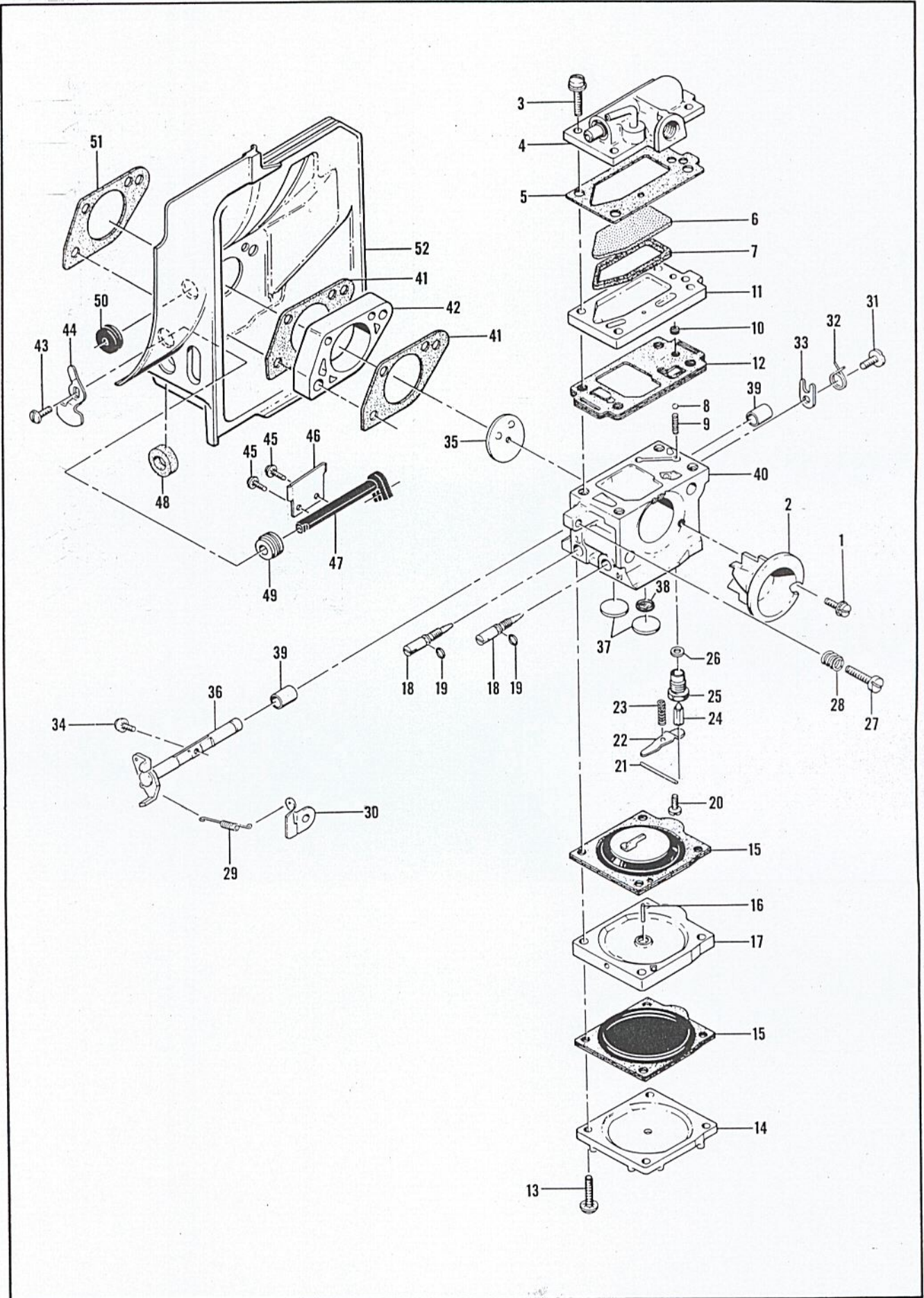


Figure 2. Carburetor - Airbox Assembly

FIGURE 2. CARBURETOR—AIRBOX ASSEMBLY

Index No.	Part Number	Nomenclature	Units Per Assy
	59689A	Carburetor Assembly	1
1	104948	. Screw - Self tapping #4 x 3/8 in. lg	1
2	59137	. Diffuser - Carburetor	1
3	110011	. Screw - 8-32 x 11/16 in. lg (SEMS)	4
4	59142A	. Primer Assembly	1
5	59141	. Gasket - Primer	1
6	59123	. Filter - Fuel	1
7	59124	. Gasket - Fuel filter	1
8	100302	. Ball - 1/8 in. dia	1
9	28754	. Spring - Primer valve	1
10	59480	. Seat - Primer valve	1
11	59139	. Body - Fuel pump	1
12	59120A	. Diaphragm Assy - Fuel pump	1
13	110011	. Screw - 8-32 x 11/16 in. lg (SEMS)	4
14	59125	. Cover - Diaphragm	1
15	59129	. Diaphragm Assembly - Fuel regulator	2
16	59128	. Pin - Actuator	1
17	59425	. Separator Assembly	1
18	59113A	. Needle Assembly - Fuel	2
19	104001	. "O" Ring	2
20	104728	. Screw - Binding hd #6 x 1/4 in. lg	1
21	104502	. Pin - Inlet lever	1
22	59109	. Lever - Inlet control	1
23	55084	. Spring - Inlet lever	1
24	59710	. Valve - Needle	1
25	59711	. Body - Valve seat	1
26	55689	. Washer - Valve seat	1
27	59595	. Screw - Fil hd 8-32 x 3/4 in. lg	1
28	51705	. Spring - Idle adjustment	1
29	59686A	. Spring - Governor control	1
30	59685	. Bracket - Governor control spring	1
31	104769	. Screw - Pan hd 6-32 x 3/8 in. lg	1
32	59688	. Spring - Detent	1
33	59687	. Clip - Throttle shaft	1
34	104814	. Screw - 4-40 x 1/4 in. lg (SEMS)	1
35	55085	. Plate - Throttle	1
36	59146B	. Shaft Assembly - Throttle	1
	59498	. Body Assembly - Carburetor	1
37	102758	. Plug - 1/2 in. dia	2
38	59105	. Seal - Capillary 5/16 in. dia	1
39	59575	. Bushing - Carburetor body	2
40		. Body - Carburetor ... (Not available-Order Body Assy #59498)	1
		Airbox	1
41	59135	. Gasket - Carburetor	2
42	59144	. Insulator - Carburetor	1
43	104948	. Screw - 4-40 x 3/8 in. lg (SEMS)	1
44	59517A	. Arm - Throttle	1
45	104814	. Screw - 4-40 x 1/4 in. lg (SEMS)	2
46	59515	. Vane - Governor	1
47	59180B	. Shaft - Governor	1
48	59170	. Felt - Seal	1
	59654	. Box Assembly - Air cleaner	1
49	59167	. Bearing - Governor shaft	1
50	104276	. Grommet	1
51	59135	. Gasket	1
52		. Box - Air cleaner (Not available-Order Box Assy #59654)	1

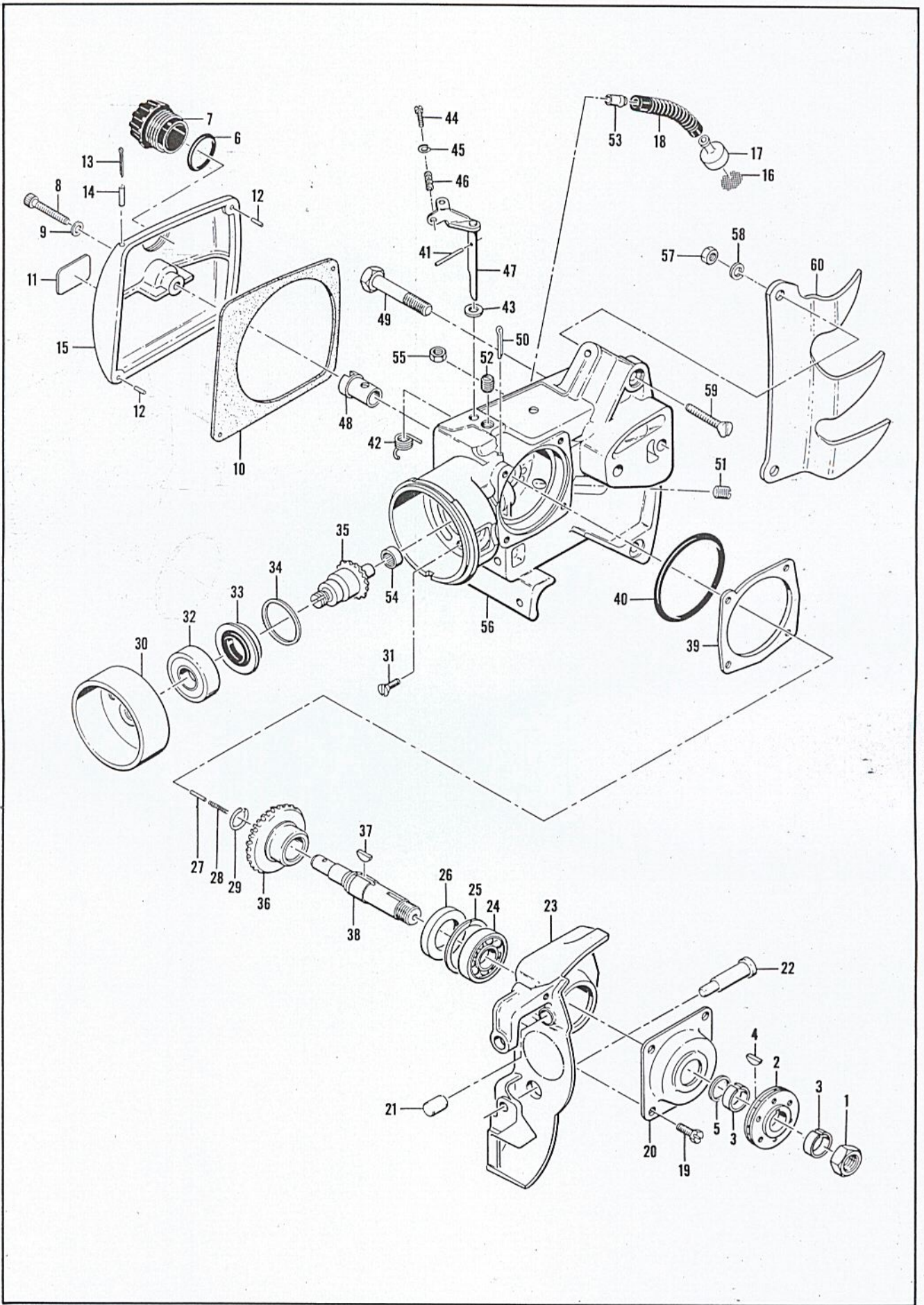


Figure 3. Transmission Assembly

FIGURE 3. TRANSMISSION ASSEMBLY

Index No.	Part Number	Nomenclature	Units Per Assy
NOTE: Alternate Gearcase Cover, Part No. 59744 is required to permit Bow Saw Installation.			
	59720	Transmission Assy 2:1	1
1	100836	Nut - Jam 1/2-20	1
2	59420	Sprocket Assy - Auto Mac	1
3	59234	Spacer - Sprocket	2
4	100256	Key - Woodruff #6	1
5	59210	Shim - Sprocket	As Reqd
	59211	Shim - Sprocket	As Reqd
	59212	Shim - Sprocket	As Reqd
6	101148	"O" Ring	1
7	57129	Cap - Oil filler	1
8	101532	Screw - Socket hd 1/4-20 x 1/2 in. lg	1
9	104747	Washer - Plain 1/4 in.	1
10	59196	Gasket - Oil tank cover	1
11	59445	Decal - Oiler housing	1
12	102868	Pin - Groove 3/32 x 3/8 in. lg	1
13	100731	Pin - Cotter 1/16 x 1 in. lg	1
14	101556	Pin - Roll 1/8 x 5/8 in. lg	1
15	59039	Cover - Oil tank	1
16	51506	Screen - Oil pickup	1
17	51509	Weight - Oil pickup	1
18	28007	Hose - Oil	1
19	102762	Screw - Hex hd 10-24 x 1/2 in. lg	4
20	59463	Retainer - Bearing	1
21	59716	Plug - Grinder pin hole	1
22	59717	Plug - Grinder cam hole	1
23	59714	Cover - Gearcase	1
	59744	Cover - Gearcase (See note at start of list)	Alternate
24	102274	Bearing - Ball	1
25	100342	Ring - Snap	1
26	101300	Seal - Oil	1
27	104785	Roller - Needle	1
28	59198	Spring - Oiler pump piston	1
29	104761	Ring - Lock	1
30	59184	Drum Assy - Clutch	1
31	59494	Screw - Special sealing	3
	59499	Gear Assembly - Matched	1
32	102274	Bearing - Ball	1
33	36159	Seal - Oil	1
34	52686	Shim - Pinion 0.003 in. thick	As Reqd
	52687	Shim - Pinion 0.010 in. thick	As Reqd
	52688	Shim - Pinion 0.015 in. thick	As Reqd
35		Pinion (Not available-Order Matched Gear Assy #59499)	1
36		Gear - 2:1 (Not available-Order Matched Gear Assy #59499)	1
37	55953	Key - Woodruff #6	1
38	59156	Shaft - Gear	1
39	59387	Shim - Gear 0.003 in. thick	As Reqd
	59388	Shim - Gear 0.010 in. thick	As Reqd
	59389	Shim - Gear 0.015 in. thick	As Reqd
40	104523	"O" Ring	1
41	103939	Pin - Roll 1/16 x 5/8 in. lg	1
42	59271	Spring - Torsion	1
43	100004	Washer - Plain 1/4 in.	1
44	100696	Screw - 8-32 x 5/8 in. lg (SEMS)	1
45	100057	Lockwasher #8	1
46	51705	Spring - Pump control	1
47	59188	Shaft Assy - Pump control	1
48	59187	Bushing	1
	59098	Gearcase Assembly	1
49	51423B	Bolt - Bar mounting	2
50	100010	Pin - Cotter 1/16 x 1/2 in. lg	1
51	101961	Plug - Pipe 1/8-27	1
52	101864	Plug - Pipe 1/16-27	1
53	28042	Tube - Oiler	1
54	104740	Bearing - Needle	1
55	101191	Nut - Hex 10-24	1
56		Gearcase (Not available-Order Gearcase Assy #59098)	1
57	100152	Nut - Hex 1/4-20	2
58	100153	Lockwasher - 1/4 in.	2
59	102264	Screw - Flat hd 1/4-20 x 1 in. lg	2
60	59507	Spike	1

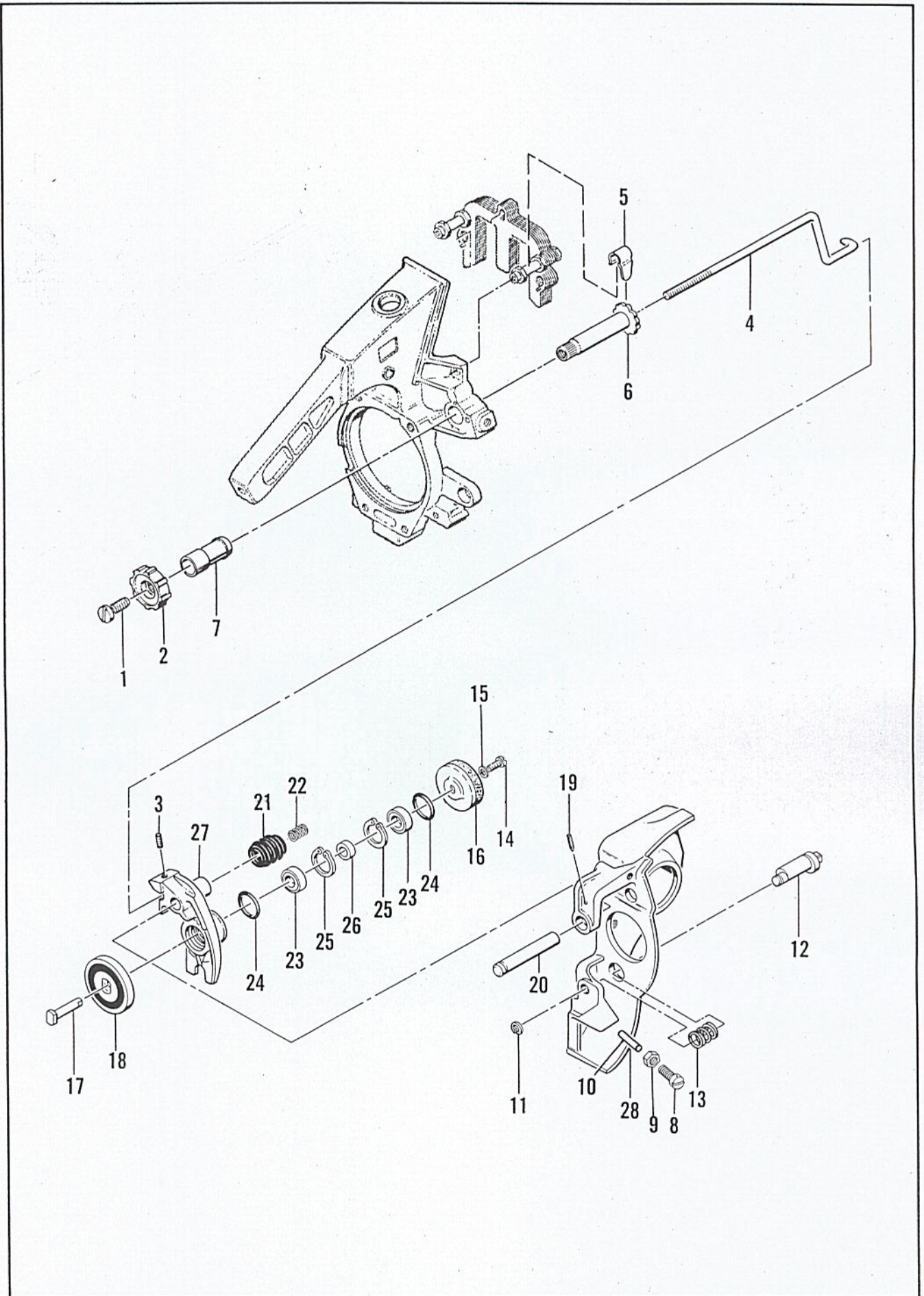


Figure 3A. Chain Grinder Assembly, BP-1 Engine

FIGURE 3A. CHAIN GRINDER ASSEMBLY, BP-1 ENGINE

Index No.	Part Number	Nomenclature	Units Per Assy
NOTE: The following parts are used on the BP-1 Model when equipped with the AUTO-MAC chain grinder. Index number 4, Figure 5 and index numbers 21, 22 and 23, Figure 3 are not used when the chain grinder assembly is installed.			
1	110008	Screw - Pan Hd 12-24 x 3/8 in. long	1
2	59328	Knob - Grinder control	1
3	110007	Screw - Socket hd 10-24 x 1/4 in. long	1
4	59673	Rod - Grinder control	1
5	59330A	Spring - Grinder control	1
6	59671	Sleeve Assembly - Grinder control	1
7	59327	Bushing - Grinder control	1
8	101991	Screw - Fil Hd 10-24 x 1/2 in. long	1
9	100239	Nut - Hex 10-24	1
10	59485	Pin - Cam lock	1
11	101421	Ring - Snap cam retaining	1
12	59555	Cam - Grinder feed	1
13	59675	Spring - Damper	1
14	104868	Screw - Fil hd 6-32 x 7/16 in. long	1
15	104867	Washer - Lock	1
16	59056	Wheel Assembly - Grinder	1
17	59362	Shaft - Grinder	1
18	59359	Wheel Assembly - Friction	1
19	110057	Screw - Slotted headless 8-32 x 1/2 in. long	1
20	59769	Pin - Dowell 5/16 x 1/2 in. long	1
21	59369	Boot - Grinder	1
22	59357	Spring - Grinder	1
23	104833	Bearing - Ball	2
24	100009	"O" Ring	2
25	102049	Ring - Snap bearing retainer	2
26	59670	Spacer - Grinder body bearing	1
27	59666	Body - Grinder	1
28	59192B	Cover - Gearcase	1

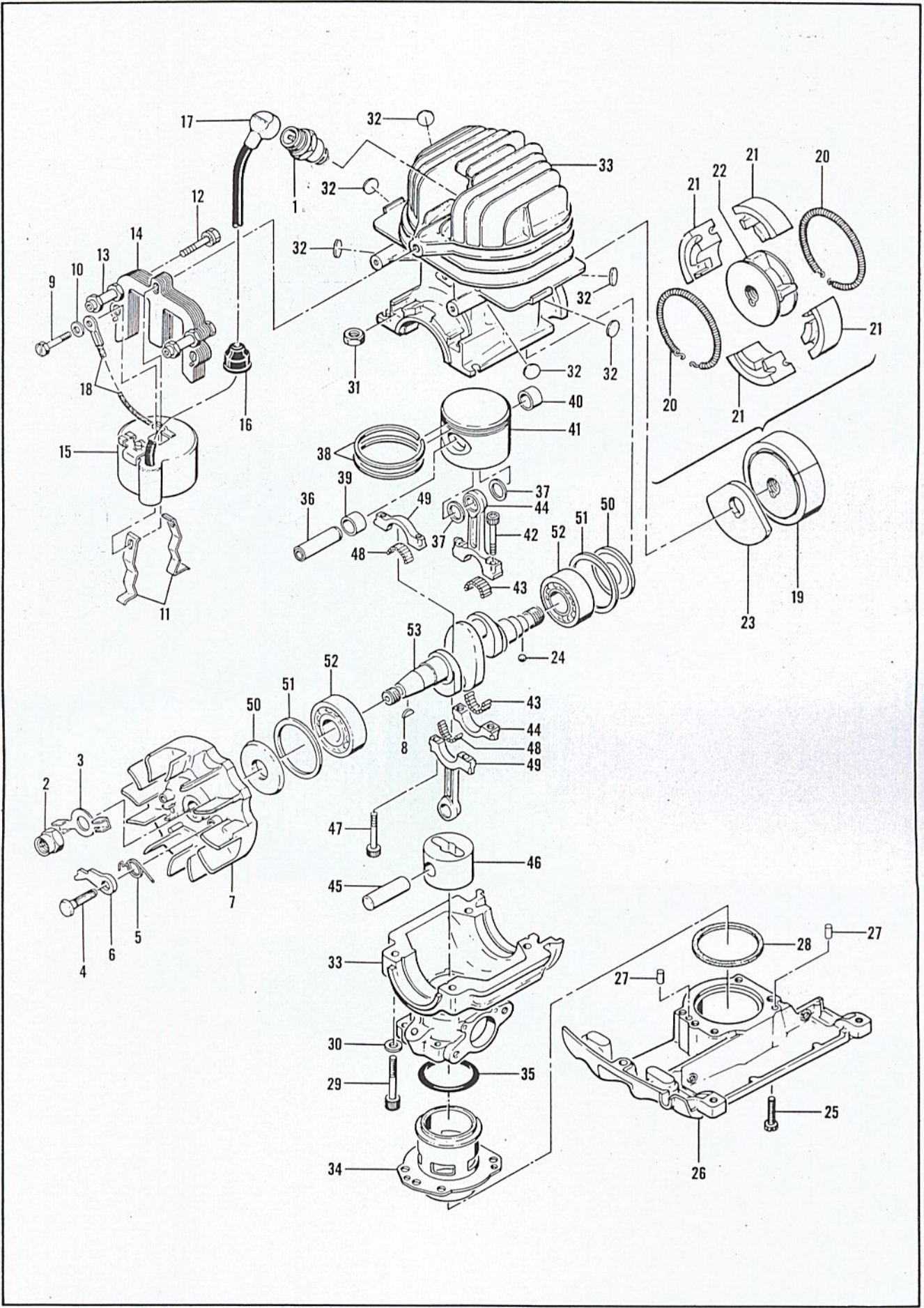


Figure 4. Powerhead Assembly

FIGURE 4. POWERHEAD ASSEMBLY

Index No.	Part Number	Nomenclature	Units Per Assy
1	104756	Spark plug	1
2	59002	Nut - Flywheel	1
3	59698	Saddle - Ignition shaft	1
	59092A	Flywheel and Starter Pawl Assy	1
4	36144B	. Pin - Starter Pawl	2
5	59014A	. Spring - Pawl	2
6	59008	. Pawl - Starter	2
7		. Flywheel... (Not available-Order Flywheel and Pawl Assy #59092A)	1
8	103882	Key - Woodruff #3	1
9	101965	Screw - Hex hd 10-24 x 7/8 in. lg	3
10	100002	Washer - Plain #10	3
11	19034	Retainer - Coil lamination	2
	59020	Lamination Assy - Coil	1
12	103464	. Screw - 10-24 x 3/4 in. lg (SEMS)	2
13	59298	. Spacer - Handle	2
14		. Lamination (Not available-Order Lamination Assy #59020)	1
15	59094	Coil and Terminal Assy	1
16	55617	. Nipple	1
17	59253	. Wire Assy - Spark plug	1
18	101883	. Wire Assy - Ground	1
19	59427B	Clutch Assy	1
20	59072A	. Spring - Clutch shoe	2
21	59071	. Shoe - Clutch	4
22	59154B	. Rotor Assy - Clutch	1
23	59070	Counterweight - Crankshaft	1
24	100549	Ball - Steel 3/16 in. dia	1
25	103464	Screw - 10-24 x 3/4 in. lg	4
26	59761	Cover Assy - Bottom	1
27	104819	. Pin - Dowel	2
28	59762	Gasket	1
	59676	Cylinder and Crankcase Assy	1
29	104552	. Screw - Socket hd 1/4-20 x 1-1/2 in. lg	4
30	100005	. Washer - Plain 1/4 in.	4
31	101143	. Nut - Hex 1/4-20	4
32	102432	. Plug - Expansion	6
33		. Cylinder and Crankcase (Not available-Order Cylinder and Crankcase Assy #59676)	1
34	59677	Cylinder - Balance	1
35	110012	"O" Ring	1
36	59042	Pin - Piston	1
37	52039	Washer - Spacer	2
	59501A	Piston Assembly - Power	1
38	59643	. Ring Set - Piston	1
39	104782	. Bearing - Open end	1
40	104783	. Bearing - Closed end	1
41		. Piston..... (Not available-Order Piston Assy #59501A)	1
	59767	Connecting Rod Assembly	1
42	59597	. Screw - Socket hd 8-32 x 11/16 in. lg	2
43	59378	. Roller - Needle	20
44		. Connecting Rod (Not available-Order Connecting Rod Assembly #59767)	1
45	59027	Pin - Piston	1
46	59043	Piston - Balance	1
	59767	Connecting Rod Assembly	1
47	59597	. Screw - Socket hd 8-32 x 11/16 in. lg	2
48	59378	. Roller - Needle	20
49		. Connecting Rod (Not available-Order Connecting Rod Assembly #59767)	1
50	59631	Seal - Oil	2
51	59068	Retainer - Bearing	2
52	100824	Bearing - Ball	2
53	59763	Crankshaft	1

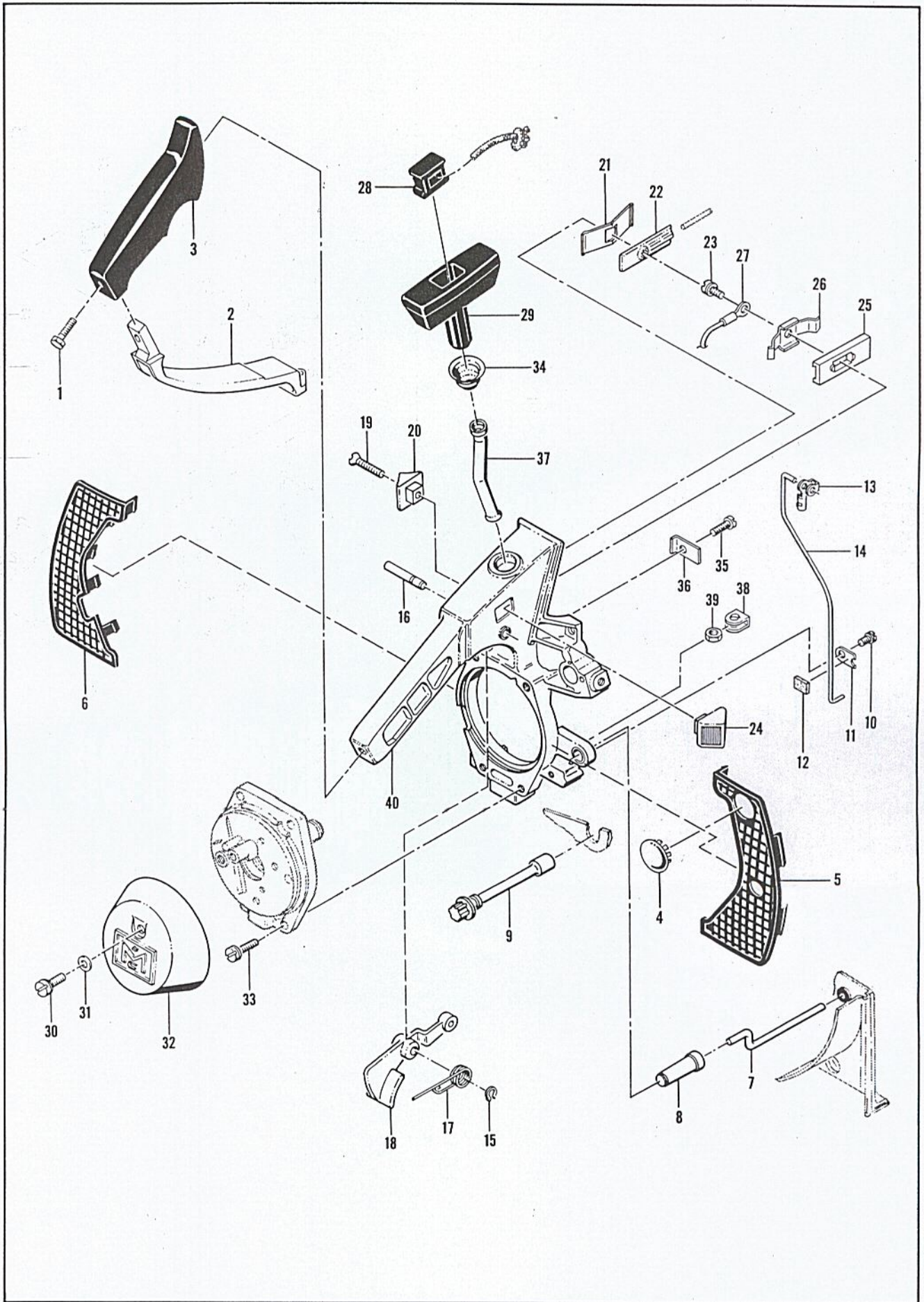


Figure 5. Controls

FIGURE 5. CONTROLS

Index No.	Part Number	Nomenclature	Units Per Assy
1	102761	Screw - Hex hd 10-24 x 7/8 in. lg	1
2	59268	Brace - Handle	1
3	59257	Grip	1
4	110038	Plug - Button	1
5	59284	Grille - Right hand	1
6	59285	Grille - Left hand	1
7	59166	Rod - Primer	1
8	59168	Button - Primer	1
9	59164	Knob - Idle mixture control	1
10	103061	Screw - 8-32 x 3/4 in. lg (SEMS)	1
11	59171	Retainer - Felt	1
12	51394	Felt - Throttle control rod	1
13	59159	Clip - Throttle	1
14	59169	Rod - Throttle	1
15	104501	Retainer - Trigger pin	1
16	50507	Pin - Trigger	1
17	59598	Spring - Trigger return	1
18	59259	Trigger	1
19	101314	Screw - Countersunk hd 8-32 x 3/4 in. lg	1
20	59263	Button - Oiler control	1
21	59262	Spring - Oiler control	1
22	59303	Socket - Oiler rod	1
23	103061	Screw - 8-32 x 3/8 in. lg	1
24	57718	Button - Ignition switch	1
25	59591	Base - Ignition switch	1
26	59592	Contact - Switch	1
27	51492A	Wire Assembly	1
28	59392	Cup - Starter handle	1
29	59251	Handle - Starter	1
30	103672	Screw - 8-32 x 1/2 in. lg (SEMS)	1
31	100080	Washer - Plain #8	1
32	59602	Cover - Breaker assembly	1
33	104832	Screw - 10-24 x 3/4 in. lg (SEMS)	4
	59693	Starter Assembly	1
34	59267	Socket - Starter rope	1
35	104769	Screw - Pan hd 6-32 x 3/8 in. lg	1
36	58155	Clamp - Starter rope tube	1
37	59560	Tube - Starter rope	1
38	28053	Retainer - Nut	1
39	101337	Nut - Hex 10-32	1
40	59559C	Handle	1

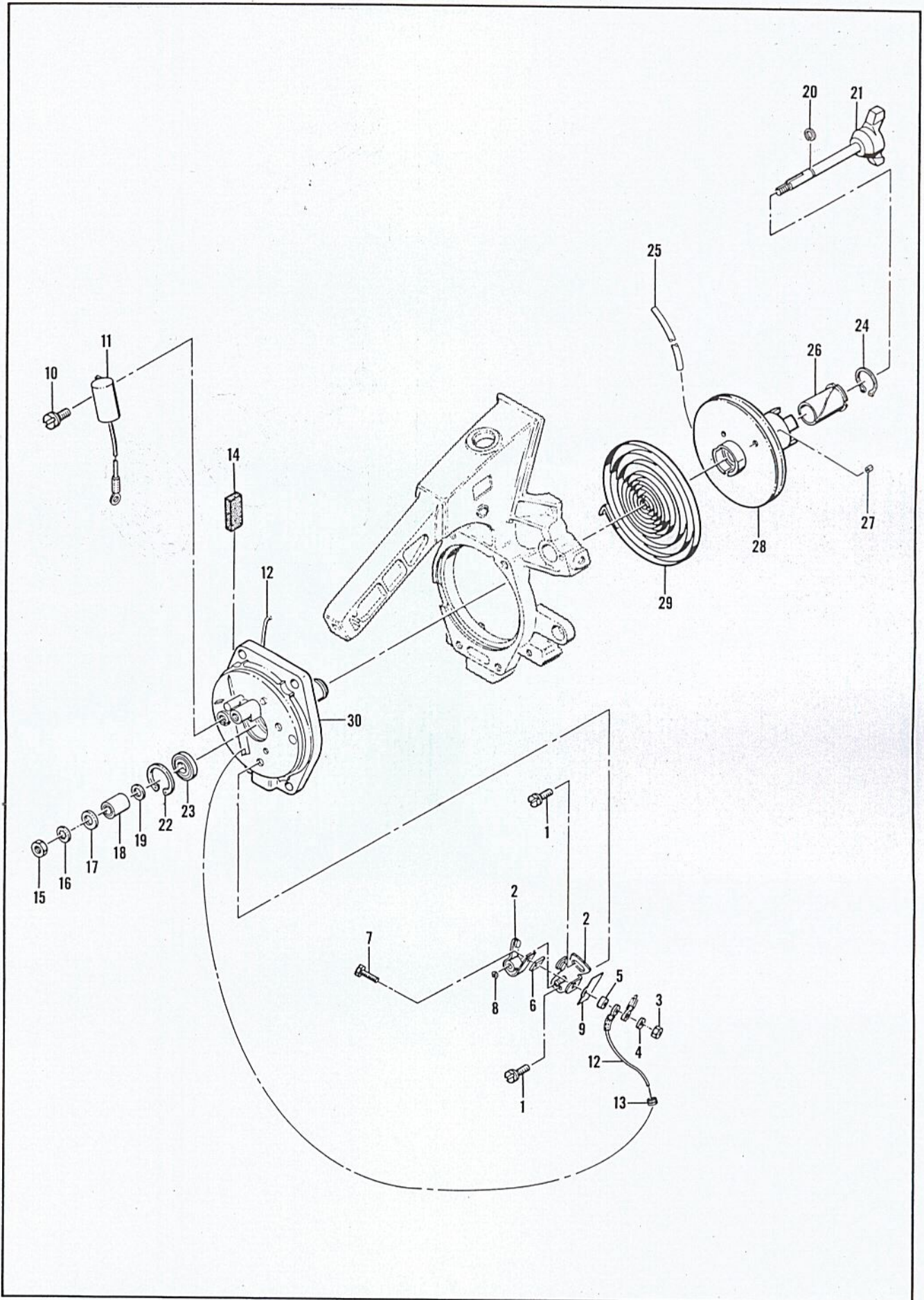


Figure 6. Starter Assembly - Breaker Points

FIGURE 6. STARTER ASSEMBLY - BREAKER POINTS

BP-1

Index No.	Part Number	Nomenclature	Units Per Assy
	59693	Starter Assembly	1
1	103672	. Screw - 8-32 x 1/2 in. lg	2
2	59287A	. Breaker Assembly - Ignition	1
3	100251	. . Nut - Hex 8-32	1
4	100057	. . Washer - Lock #8	1
5	57769	. . Insulator - Screw	1
6	57770A	. . Insulator - Spring	1
7	103748	. . Screw - Hex hd 8-32 x 1-1/2 in. lg	1
8	104836	. . Ring - Retaining	1
9	50381A	. Insulator - Breaker terminal	1
10	103672	. Screw - 8-32 x 1/2 in. lg (SEMS)	1
11	50074	. Condenser	1
12	59254	. Wire Assembly - Primary	1
13	101230	. Grommet	1
14	54184	. Felt - Wiper	1
15	101075	. Nut - Hex 10-32	1
16	101194	. Washer - Lock #10	1
17	100003	. Washer - Plain #10	1
18	59024	. Cam - Ignition	1
19	59386	. Spacer - Ignition cam	1
20	102049	. Ring - Retaining	1
21	59694	. Shaft Assembly - Ignition	1
22	104872	. Ring - Retaining	1
23	104834	. Bearing - Ball	1
24	100501	. Ring - Retaining	1
25	59249	. Rope - Starter	1
26	59241	. Bushing - Nyliner	2
27	103127	. Pin - Roll 1/8 x 1/8 in. lg	1
28	59006	. Drum - Starter	1
29	36059	. Spring - Starter rewind	1
30	59023A	. Base - Starter	1

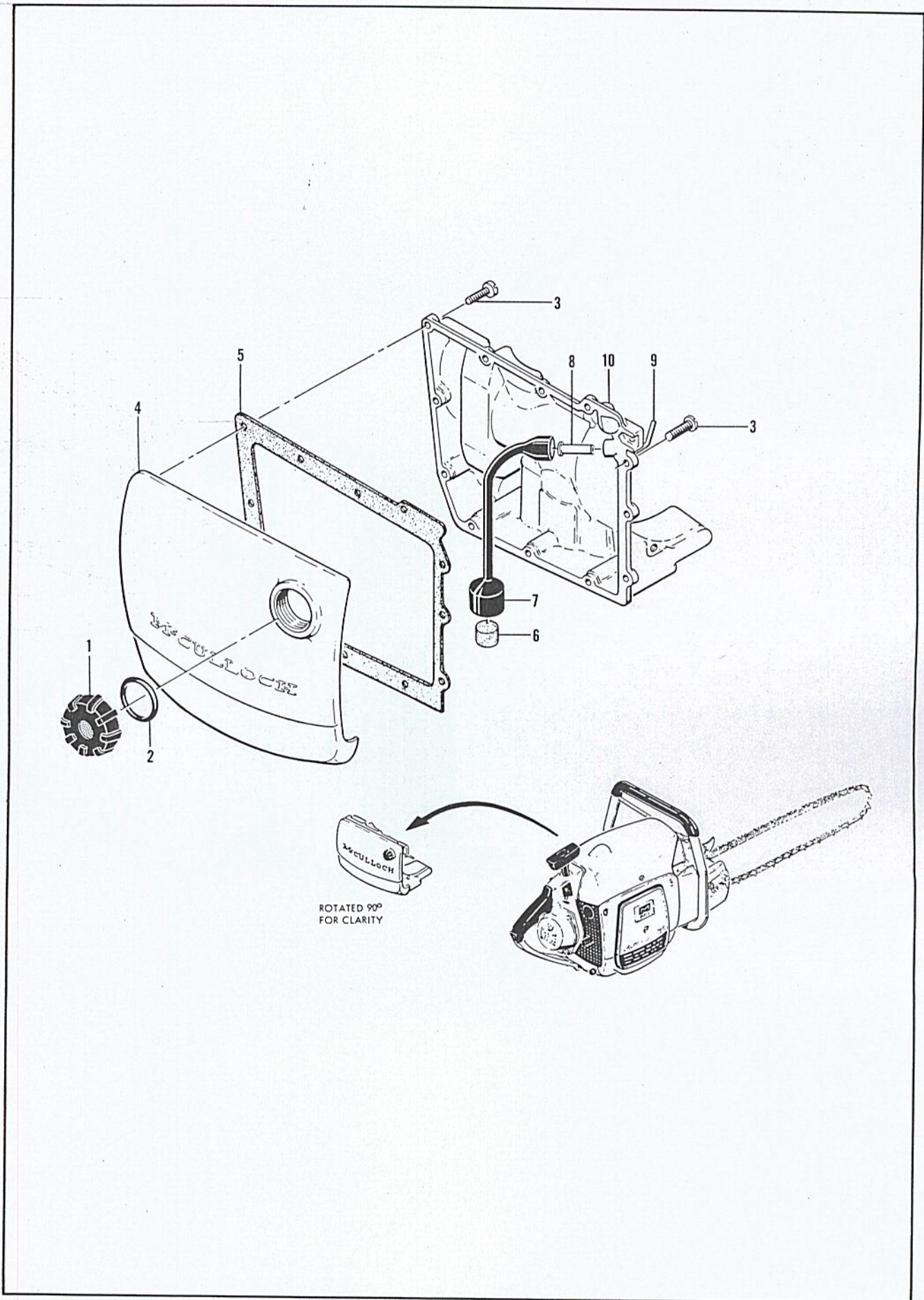


Figure 7. Fuel System

FIGURE 7. FUEL SYSTEM

Index No.	Part Number	Nomenclature	Units Per Assy
1	59247A	Cap - Fuel	1
2	103762	"O" Ring	1
	59497A	Cover Assembly - Fuel tank (with screws)	1
3	110041	. Screw - Pan hd 8-32 x 1/2 in. lg	12
4		. Cover	1
	59450	Gasket - Fuel tank	1
6	50124A	Filter - Fuel	1
7	50082	Hose - Flex	1
	59658A	Bottom Assembly - Fuel tank	1
8	28042	. Nipple - Tube	1
9	59770	. Tube - Delivery	1
10		. Bottom - Fuel tank ... (Not available-Order Bottom Assy #59658A)	1

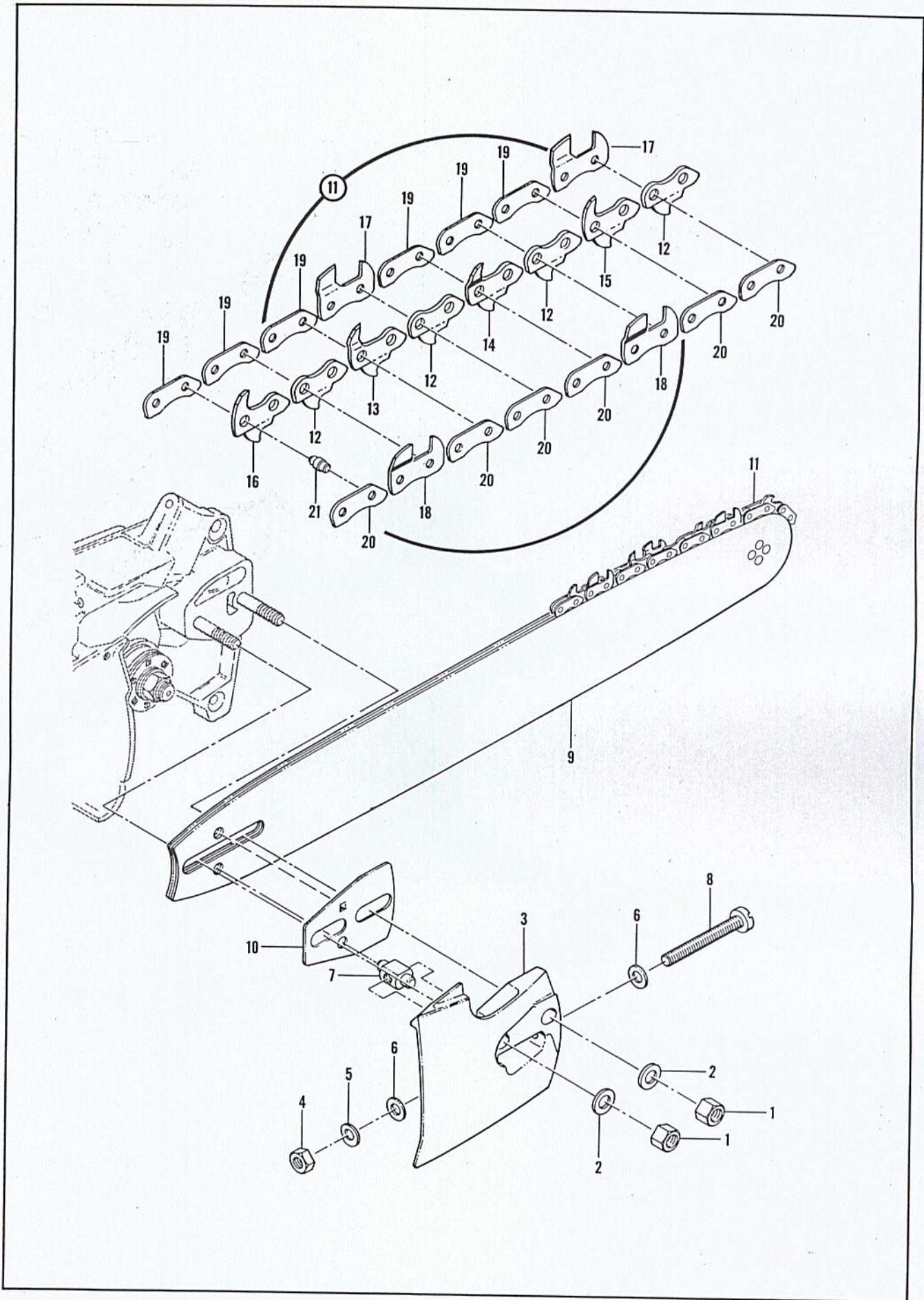


Figure 8. Chain, Bar and Bar Adjustment

FIGURE 8. CHAIN, BAR AND BAR ADJUSTMENT

Index No.	Part Number	Nomenclature	Units Per Assy
1	103729	Nut - Hex 3/8-24	2
2	100393	Washer - 3/8	2
3	59503A	Guard Assembly - Sprocket	1
4	100640	. Nut - Hex 1/4-28	1
5	102813	... Washer - Spring	1
6	102843	... Washer	2
7	52207C	... Nut - Adjusting	1
8	103919	... Screw - Adjusting	1
9	59436	Bar Assembly - AUTO MAC 16 in.	1
	59437	Bar Assembly - AUTO MAC 20 in.	Alternate
	59438	Bar Assembly - AUTO MAC 24 in.	Alternate
10	59233	Adapter - Bar	1
11		Chain - AUTO MAC	1
12	59312	. Link - Center	
13	59317	. Cutter - Center L. H. offset	
14	59318	. Cutter - Center R. H. offset	
15	59315	. Cutter - Center L. H. flat	
16	59316	. Cutter - Center R. H. flat	
17	59319	. Cutter - Side L. H.	
18	59320	. Cutter - Side R. H.	
19	59313	. Link - Side L. H.	
20	59314	. Link - Side R. H.	
21	59321	. Rivet - Chain	

TOOLS AND ACCESSORIES

Part Number	Nomenclature
*59293	Owner's Manual
*59292A	Illustrated Parts List
*51445A	Combination Wrench and Screwdriver
*59628	Clamp Wrench
*14168A	Spark Plug Wrench
*104564	Socket Wrench - #10
18413A	Feeler Gauge
56409	McCulloch Oil - 1 quart can
56404	McCulloch Oil - 12 ounce can
102449	McCulloch Yellow Paint - 12 ounce spray can
59550	Puller Assembly - Sprocket
59533	Wrench - Sprocket
59549	Wrench

*Indicates items furnished with each saw.

OVERSIZE PISTON ASSEMBLY

Part Number	Nomenclature
59086A	Piston Assembly - 0.010 in. oversize
59644	. Ring Set - Piston 0.010 in. oversize
59087A	Piston Assembly - 0.020 in. oversize
59645	. Ring Set - Piston 0.020 in. oversize
59088A	Piston Assembly - 0.030 in. oversize
59646	. Ring Set - Piston 0.030 in. oversize
59526	Gear Set - (Matched) (2.9:1 ratio)