

ILLUSTRATED PARTS LIST

MODELS	SERIAL NUMBER PREFIX	MODELS	SERIAL NUMBER PREFIX
600150-03	13-		
600150-04	13-		
600150-06	13-		

McCulloch Chain Saws are identified by a model number (in this instance 600150) followed by a suffix number (03, 04, etc.). Suffix numbers denote variations in parts or assemblies used in the manufacture of this product.

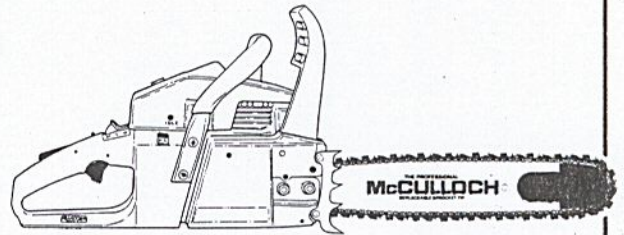
Part numbers listed in this I.P.L. which have a circled number ① or numbers preceding the description, are used only on the model or models identified by a circled number ① or numbers.

Part numbers which have one or more dots (.) preceding their descriptions may be ordered individually, but they are also included in the kit or assembly whose description begins directly above the dot(s).

The policy of McCulloch Corporation is one of continual improvement in design, manufacturing and engineering advancement wherever possible to assure still finer power tools. Hence, specifications, equipment, colors, design and manufacturer's suggested list prices are subject to change without notice and McCulloch Corporation reserves the right to make such changes without prior notification or obligation to backfit or supply backfit components for units previously shipped from the factory.

AUGUST 1987

Double Eagle™ 50 CHAIN SAW



- CONTENTS -

	PAGE
FIGURE 1. General Assembly	2
FIGURE 2. Starter Assembly	3
FIGURE 3. Chain Brake Asy	4
FIGURE 4. Carburetor Asy	5
FIGURE 5. Powerhead Asy	6
FIGURE 6. Engine Specifications	7
FIGURE 7. Bar/Chain/Sprocket	7
FIGURE 8. Main Frame Asy	8

To answer service-related questions and to solve common consumer problems quickly, call this toll-free hot-line:

(800) 423-6302

If located in Arizona, call collect:
(602) 453-3681


McCULLOCH
CORPORATION

© U.S.A. - McCulloch Corporation, 1987

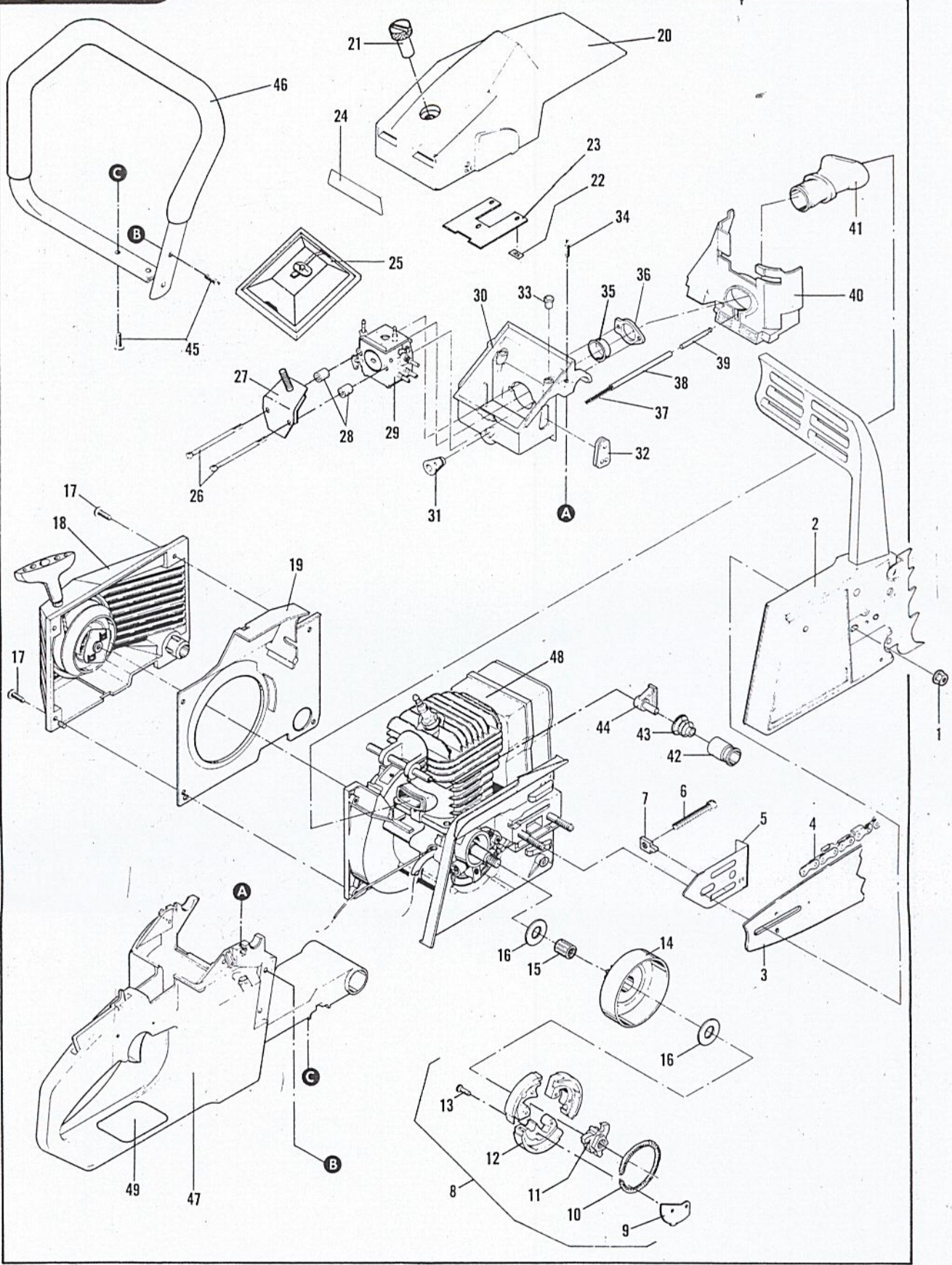
Printed in U.S.A.

222411

900 Lake Havasu Avenue, Lake Havasu City, Arizona 86403

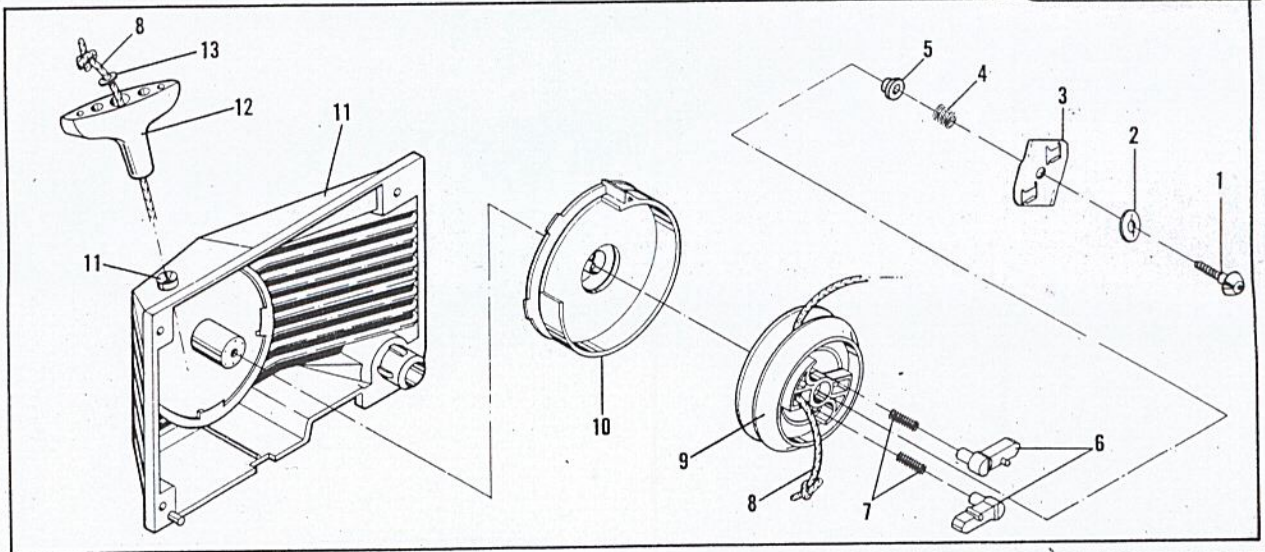
Figure 1 GENERAL ASSEMBLY

DOUBLE EAGLE™ 50



ITEM NO.	PART NUMBER	DESCRIPTION	UNITS PER ASY.	ITEM NO.	PART NUMBER	DESCRIPTION	UNITS PER ASY.
1	218042	Nut-Flange M8	2	28	218757	Spacer-Shield	2
2	Fig. 3	Brake Asy-Chain	1	29	Fig. 4	Carburetor	1
3	Fig. 7	Bar	1	30	218723	Box-Air	1
4	Fig. 7	Chain	1	31	218761	Grommet-Throttle/Choke	1
5	217594	Plate-Bar	1	32	91995-01	Grommet-Carburetor Needles	1
6	217640	Screw-Bar Adjustment	1	33	218922	Bushing-Hose	2
7	217479	Nut-Bar Adjustment	1	34	217937	Screw-10-24x1 (20 in. lb. torque)	2
8	219854	Clutch Asy (3 Shoe)	1	35	218809	Eyelet	1
9	-- --	. Plate-Shoe	3	36	218792	Flange-Carburetor Mount	1
10	-- --	. Spring Asy-Clutch	1	37	93998	Spring-Pulse Hose	1
11	-- --	. Rotor-Clutch	1	38	218972	Hose-Pulse	1
12	-- --	. Shoe-Clutch	3	39	218129	Barb-Pulse Hose	1
13	-- --	. Rivet	6	40	218768	Shroud-Cylinder	1
14	Fig. 7	Drum/Spkt/Bearing Asy	1	41	218780	Boot-Intake	1
15	110971	. Bearing-Needle	1	42	218371	Carrier-Rear Mount	2
16	86958	. Shim	2	43	218801	Mount-Rear	2
17	217936	Screw-10-24x.75 (50 in. lb. torque)	4	44	218362	Retainer-Rear Mount	2
18	Fig. 2	Starter Assembly	1	45	217936	Screw-10-24x.75 Torx (50 in. lb. torque)	4
19	218840	Baffle-Fan	1	46	218787	Frame-C	1
20	222217	Cover Asy-Air	1	47	Fig. 8	Main Frame Assembly	1
21	222206	. Knob	1	48	Fig. 5	Powerhead Assembly	1
22	-- --	. Nut-Press	3	49	219058	Label-Safety	1
23	-- --	. Plate	1				
24	218257-01	Decal-Instruction	1				
25	219071	Filter-Air	1				
26	219231	Screw-10-24x2.19	2				
27	219103	Shield-Spitback	1				

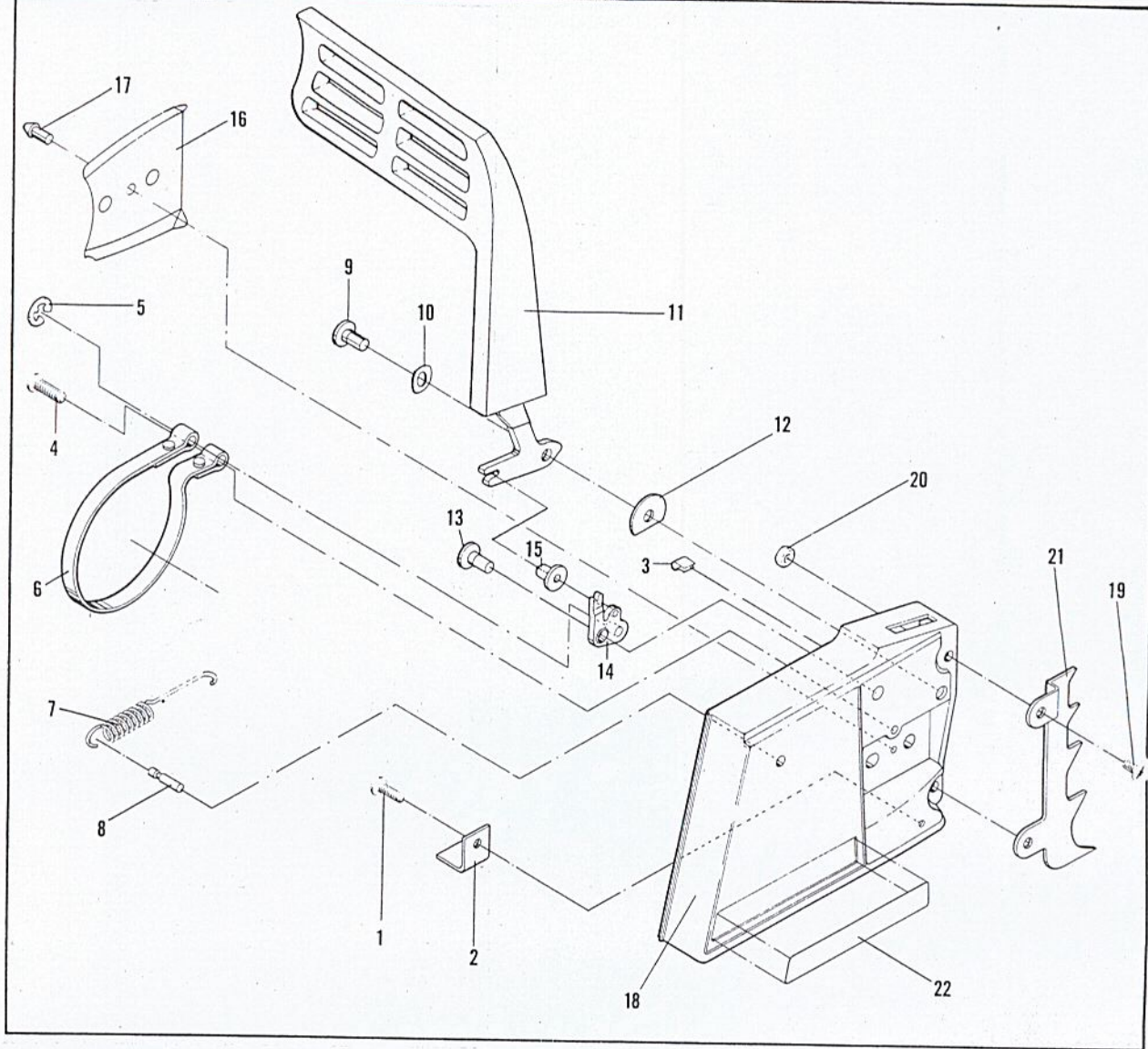
STARTER ASSEMBLY **Figure 2**



ITEM NO.	PART NUMBER	DESCRIPTION	UNITS PER ASY.
	216044	Starter Assembly	1
1	218056	. Screw-Pawl Plate	1
2	218055	. Washer-Pawl Plate	1
3	217893	. Plate-Pawl	1
4	218054	. Spring-Pawl Plate	1
5	218053	. Bushing-Pulley	1
6	217890	. Pawl	2

ITEM NO.	PART NUMBER	DESCRIPTION	UNITS PER ASY.
7	218052	. Spring-Pawl	2
8	218051	. Rope	1
9	217889	. Pulley-Starter	1
10	217891	. Spring/Housing Assembly	1
11	218929	. Housing/Guide Assembly	1
12	91255	Handle-Starter	1
13	105490	. Washer	1

Figure 3 CHAIN BRAKE ASSEMBLY



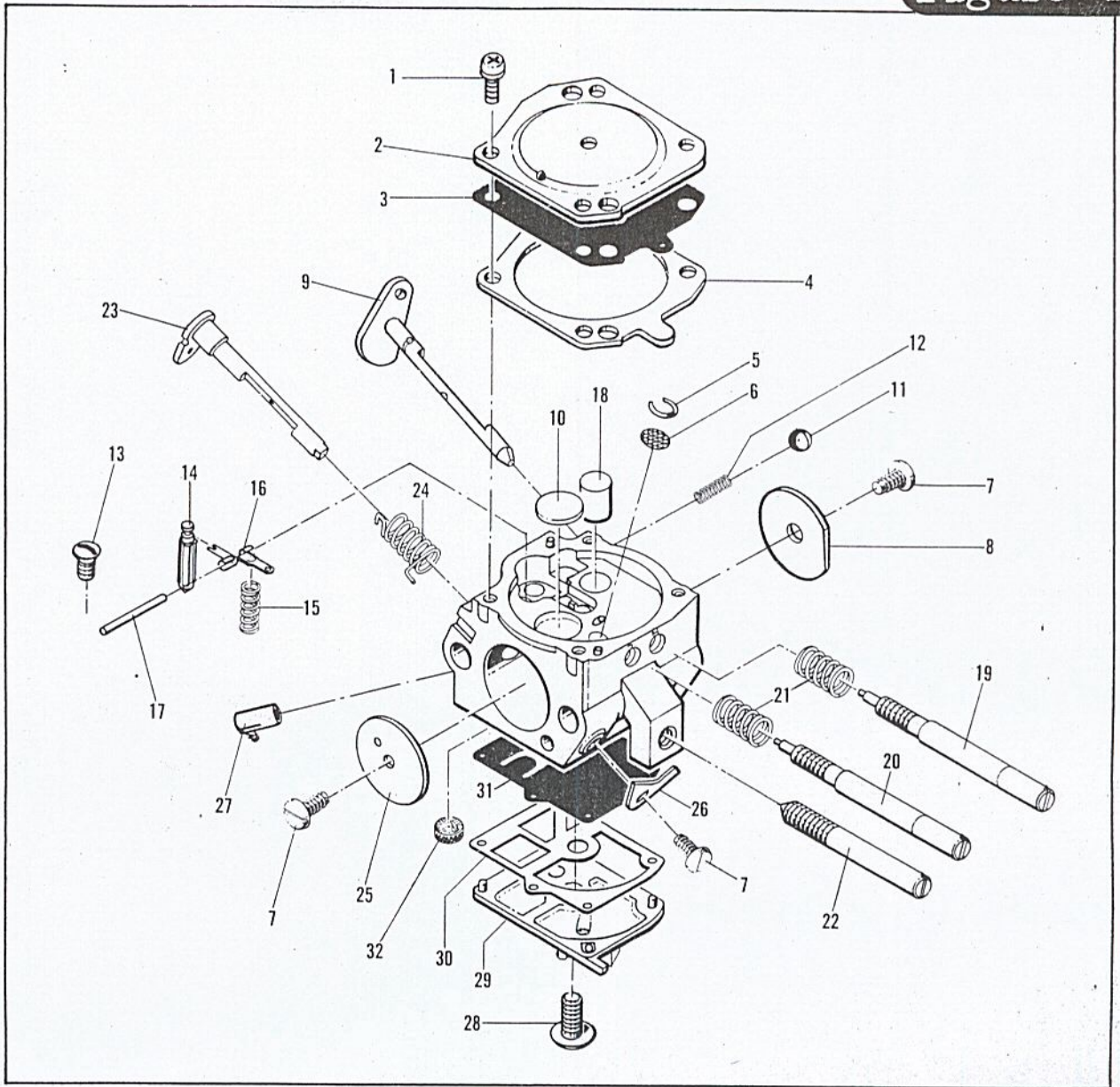
CHAIN BRAKE

ITEM NO.	PART NUMBER	DESCRIPTION	UNITS PER ASY.
1	218407	Chain Brake Assembly	1
	219195	. Screw-10-24x.50 (45-50 in. lb. torque)	1
2	218641	. Stop-Chain	1
3	110737	. Clip	1
4	218361	. Screw-1/4-20x.75 (85-90 in. lb. torque)	1
5	218079	. E-Clip-Brake Band	1
6	217472	. Brake Band	1
7	217440	. Spring-Chain Brake	1
8	217449	. Pin-Spring Hook	1
9	217450	. Pivot-Lever	1
10	218679	. Washer-Spring	1

ITEM NO.	PART NUMBER	DESCRIPTION	UNITS PER ASY.
11	218059	. Flag Lever Assembly	1
12	218674	. Washer	1
13	217448	. Pivot-Latch	1
14	217454	. Latch Assembly	1
15	218956	. Slider-Latch	1
16	218832	. Plate-Bar	1
17	218719	. Screw-Drive	1
18	217664	. Chain Brake Housing	1
19	217935	Screw-10-24x.50 (45-50 in. lb. torque)	2
20	218315	Nut-Hex 10-24	2
21	218103	Spike	1
22	218728	Plate-Name	1

CARBURETOR ASSEMBLY

Figure 4



ITEM NO.	PART NUMBER	DESCRIPTION	UNITS PER ASY.
	218783	Walbro HDA-36	
1	-- -- ①	.Screw-Metering Cover	4
2	-- --	.Cover-Metering Diaphragm	1
3	-- -- ①②	.Diaphragm Asy-Metering	1
4	-- -- ①②	.Gasket-Metering Diaphragm	1
5	-- -- ①	.Ring-Screen Retainer	1
6	-- -- ①	.Screen-Check Valve	1
7	-- -- ①	.Screw	3
8	-- --	.Shutter-Choke	1
9	-- --	.Shaft/Lever Asy Choke	1
10	-- -- ①	.Plug-Welch	1
11	-- -- ①	.Ball-Choke Friction	1
12	-- -- ①	.Spring-Choke Friction	1
13	-- -- ①	.Screw-Metering Lever Pin	1
14	-- -- ①	.Valve-Inlet Needle	1
15	-- -- ①	.Spring-Metering Lever	1
16	-- -- ①	.Lever-Metering	1

ITEM NO.	PART NUMBER	DESCRIPTION	UNITS PER ASY.
17	-- -- ①	.Pin-Metering Lever	1
18	-- --	.Nozzle Asy/Check Valve	1
19	-- -- ①	.Needle-High Speed	1
20	-- -- ①	.Needle-Low Speed	1
21	-- -- ①	.Spring-High/Low Speed Needle	2
22	-- --	.Screw-Idle Adjustment	1
23	-- --	.Shaft/Lever Asy-Throttle	1
24	-- -- ①	.Spring-Throttle Return	1
25	-- --	.Shutter-Throttle	1
26	-- --	.Stop-Throttle	1
27	-- --	.Fitting-Elbow	1
28	-- --	.Screw-Pump Cover	1
29	-- --	.Cover-Fuel Pump	1
30	-- -- ①②	.Gasket-Fuel Pump	1
31	-- -- ①②	.Diaphragm-Fuel Pump	1
32	-- -- ①	.Screen-Fuel Inlet	1

① Contained in Major Repair Kit P/N 219074
 ② Contained in Minor Repair Kit P/N 219075

NOTE: Only those parts listed in repair kits are available for service replacement.

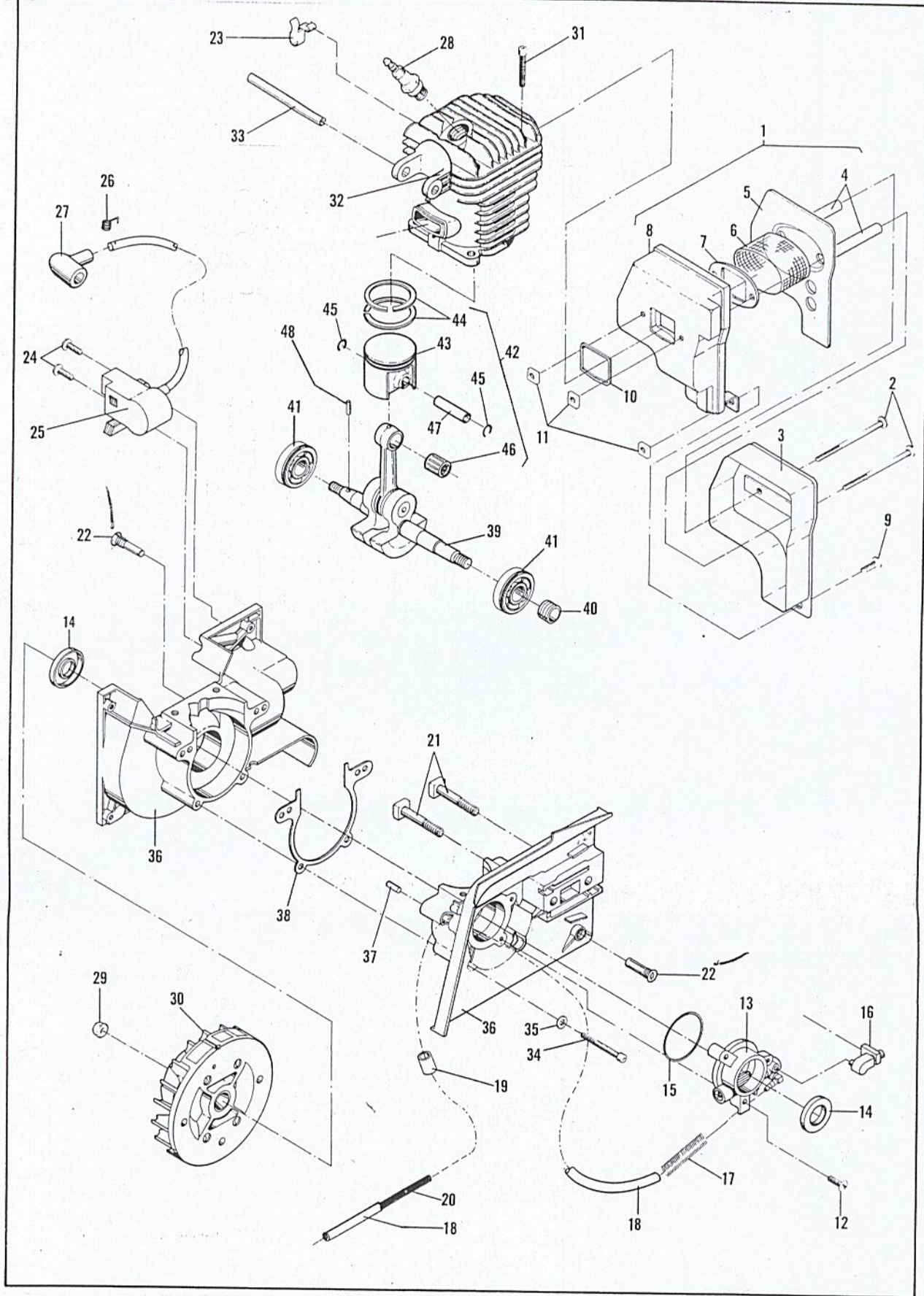


FIGURE 5 POWERHEAD ASSEMBLY

ITEM NO.	PART NUMBER	DESCRIPTION	UNITS PER ASY.	ITEM NO.	PART NUMBER	DESCRIPTION	UNITS PER ASY.
1	218793	Muffler Assembly	1	25	218830	Ignition Assembly	1
2	217942	. Screw-10-24x2.62 (70 in. lb. torque)	2	26	102556	. Connector-Spark Plug	1
3	218795	. Muffler Body-Outer	1	27	95266	. Boot-Spark Plug	1
4	218030	. Tube-Bolt	2	28	62345	Spark Plug	1
5	218725	. Baffle	1	29	218042	Nut-Flywheel (220-250 in. lb. torque)	1
6	217629	. Screen-Spark Arrester	1	30	218635	Flywheel Assembly	1
7	217627	. Plate-Reinforcement	1	31	217943	Screw 1/4-20x1.0 (90 in. lb. torque)	4
8	218794	. Body-Inner	1	32	218781	Cylinder Assembly	1
9	217935	Screw-10-24x.50 (70 in. lb. torque)	1	33	218149	. Pin-Roll	1
10	215947	Gasket-Exhaust	1	34	217721	Screw-10-24x1.625 (70 in. lb. torque)	4
11	218005	Nut-Muffler 10-24	3	35	216591	Washer-Flat	4
12	217936	Screw-10-24x.75 (30 in. lb. torque)	3	36	216477	Crankcase Assembly	1
13	222419	Oil Assembly	1	37	215834	. Dowel Pin-Crankcase	2
14	215892	. Seal-Oil	2	38	216508	Gasket-Crankcase	1
15	217867	. Ring-"0"	1	39	218897	C' Shaft/C-Rod/Wormgear	1
16	219972	Connector-Oil Pump	1	40	217273	Wormgear	1
17	218669	Guard-Oil Hose	1	41	215946	. Bearing-Ball	2
18	218482	Hose-Oil Pump	1	42	218952	Piston Assembly	1
19	219051	Sleeve-Oil Hose	1	43	218751	. Piston	1
20	218589	Spring-Oil Hose	1	44	215825	. Ring-Piston	2
21	92459	Bolt-Bar	2	45	215876	. Ring-Snap	2
22	217781	Screw-Front Mount (50 in. lb. torque)	2	46	215837	. Bearing-Piston Pin	1
23	218865	Clip-Spring	1	47	215836	. Pin-Piston	1
24	217936	Screw-10-24x.75 (35-45 in. lb. torque)	2	48	217632	Pin-Timing	1

① Although 2 seals are required for the unit, only 1 seal is included with the Oiler Assembly.

SPECIFICATIONS Figure 6

Displacement 50cc - 3.1 Cu. In.	Auto Oiler Type Gear Driven
Bore & Stroke (inches) 1.72 x 1.26	Clutch Engagement Speed 2900 - 3350 RPM
Cylinder Hard Chrome Plated	Idle Speed 2200 - 2500 RPM
Bearing:	Ignition Electronic
Main Ball	Lamination/Flywheel Airgap .. .010 - .012
Connecting Rod Needle	Spark Plug/Gap Champion DJ8J/.025
Fuel Tank Capacity 20 Ounces	Weight (PUO)
Oil Tank Capacity 7.5 Ounces	Carburetor Adjustment Two Needle/External

BAR / CHAIN / SPROCKET Figure 7

NOTE
Before ordering replacement service parts, identify pitch of Sprocket/Drum/Bearing Assembly supplied with your unit (see Sprocket Identification chart). Order only components of the same pitch to ensure proper mesh.

FOR .375 PITCH

FOR .325 PITCH

<table border="1" style="width: 100%; border-collapse: collapse;"> <tr> <td style="width: 15%;">218928</td> <td>Sprocket/Drum/Bearing Asy.</td> </tr> <tr> <td>94074-00</td> <td>16" Speed Mac Bar</td> </tr> <tr> <td>86830</td> <td>Replacement - Sprocket Tip</td> </tr> <tr> <td>218839-12</td> <td>16" Chain PMR 370GLX 60 CL</td> </tr> <tr> <td>94074-05</td> <td>16" Speed Mac Bar</td> </tr> <tr> <td>219975</td> <td>Replacement - Sprocket Tip</td> </tr> <tr> <td>218839-12</td> <td>16" Chain PMR 370GLX 60 CL</td> </tr> <tr> <td>93778-00</td> <td>20" Speed Mac Bar</td> </tr> <tr> <td>86830</td> <td>Replacement - Sprocket Tip</td> </tr> <tr> <td>218069-12</td> <td>20" Chain PMR 370GLX 70 CL</td> </tr> <tr> <td>93778-05</td> <td>20" Speed Mac Bar</td> </tr> <tr> <td>219975</td> <td>Replacement - Sprocket Tip</td> </tr> <tr> <td>218069-12</td> <td>20" Chain PMR 370GLX 70 CL</td> </tr> </table>	218928	Sprocket/Drum/Bearing Asy.	94074-00	16" Speed Mac Bar	86830	Replacement - Sprocket Tip	218839-12	16" Chain PMR 370GLX 60 CL	94074-05	16" Speed Mac Bar	219975	Replacement - Sprocket Tip	218839-12	16" Chain PMR 370GLX 60 CL	93778-00	20" Speed Mac Bar	86830	Replacement - Sprocket Tip	218069-12	20" Chain PMR 370GLX 70 CL	93778-05	20" Speed Mac Bar	219975	Replacement - Sprocket Tip	218069-12	20" Chain PMR 370GLX 70 CL	<table border="1" style="width: 100%; border-collapse: collapse;"> <tr> <td style="width: 15%;">218925</td> <td>Sprocket/Drum/Bearing Asy.</td> </tr> <tr> <td>218923</td> <td>16" Sprocket Tip Bar</td> </tr> <tr> <td>218999</td> <td>Replacement - Sprocket Tip</td> </tr> <tr> <td>218551-12</td> <td>16" Chain SPG 320GLX 68 CL</td> </tr> <tr> <td>218924</td> <td>20" Sprocket Tip Bar</td> </tr> <tr> <td>218999</td> <td>Replacement - Sprocket Tip</td> </tr> <tr> <td>218552-12</td> <td>20" Chain SPG 320GLX 79 CL</td> </tr> </table> <div style="text-align: center; margin-top: 10px;"> <p>SPROCKET IDENTIFICATION</p> </div>	218925	Sprocket/Drum/Bearing Asy.	218923	16" Sprocket Tip Bar	218999	Replacement - Sprocket Tip	218551-12	16" Chain SPG 320GLX 68 CL	218924	20" Sprocket Tip Bar	218999	Replacement - Sprocket Tip	218552-12	20" Chain SPG 320GLX 79 CL
218928	Sprocket/Drum/Bearing Asy.																																								
94074-00	16" Speed Mac Bar																																								
86830	Replacement - Sprocket Tip																																								
218839-12	16" Chain PMR 370GLX 60 CL																																								
94074-05	16" Speed Mac Bar																																								
219975	Replacement - Sprocket Tip																																								
218839-12	16" Chain PMR 370GLX 60 CL																																								
93778-00	20" Speed Mac Bar																																								
86830	Replacement - Sprocket Tip																																								
218069-12	20" Chain PMR 370GLX 70 CL																																								
93778-05	20" Speed Mac Bar																																								
219975	Replacement - Sprocket Tip																																								
218069-12	20" Chain PMR 370GLX 70 CL																																								
218925	Sprocket/Drum/Bearing Asy.																																								
218923	16" Sprocket Tip Bar																																								
218999	Replacement - Sprocket Tip																																								
218551-12	16" Chain SPG 320GLX 68 CL																																								
218924	20" Sprocket Tip Bar																																								
218999	Replacement - Sprocket Tip																																								
218552-12	20" Chain SPG 320GLX 79 CL																																								

NOTE: Part number of Guide Bar is stamped on the bar.

