

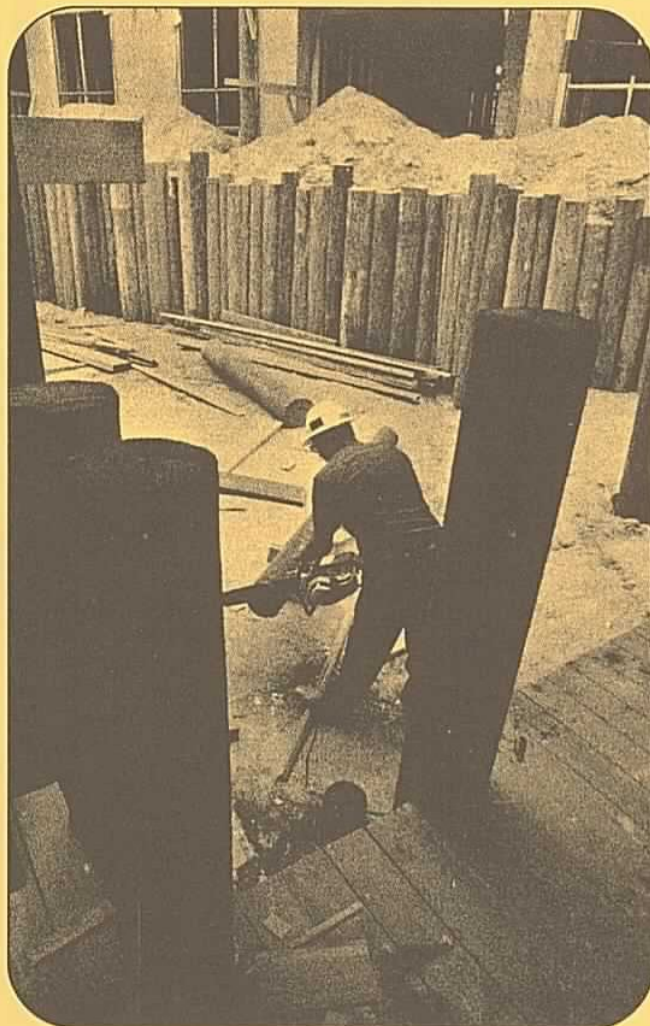
McCulloch

Super 250

Super 550

The Versatile All-Pro Workhorses

Powerful favorites among loggers, pulpwood cutters, and construction crews. These lightweight engines deliver plenty of power to tackle the toughest cutting jobs. Add Brushcutter/Weedcutter to clear shrub, weeds, brush. Attach the Earth Drill and these Super saws help you set fenceposts, signs, make soil tests. The Super 250 packs 90cc (5.3 cu. in.) of dependable power. The Super 550 boasts 105cc (6.3 cu. in.). Whichever model you choose you get plenty of top features: Automatic bar and chain oiling; vinyl covered wrap-around handleframe and rubberized pistolgrip; all position carburetor with external adjustments and idle governor; rugged spark arrestor muffler. Both take bars, plunge and paddle bows.



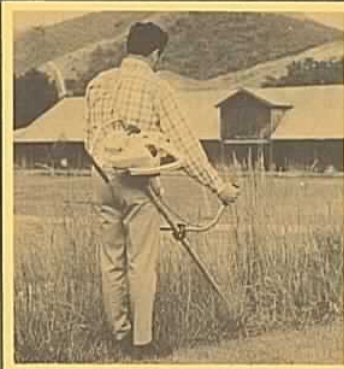
Super 550

Super 250

McCulloch Chain Saw Features and Specifications

McCulloch Convenience Features	Super 250	Super 550
Weight*	20 1/2 lbs (9.3 kg)	21 1/2 lbs (9.8 kg)
Guide Bar	Bars 27" (687 mm) Earthdrill and Brushcutter	Bars 31" (790 mm) Earthdrill and Brushcutter
Overall Dimensions (outside frame)	11" H x 17" L x 11" W (280 x 432 x 280 mm)	11 1/2" H x 17" L x 11" W (292 x 432 x 280 mm)
Muffler	Heavy duty Spark Arrestor	Heavy duty Spark Arrestor
Easy Starting	Automatic rewind with Nylon rope	Automatic rewind with Nylon rope
Bar/Chain Oiling	Automatic plus manual	Automatic plus manual
Handle Frame	Plasticized handle bar grip & full rubber pistol grip, full wrap around design	Plasticized handle bar grip & full rubber pistol grip, full wrap around design
Engine Specifications		
Power Unit	Single cylinder, two- cycle, high perfor- mance air cooled loop scavenged	Single cylinder, two- cycle, high perfor- mance cooled loop scavenged
Displacement	5.3 (90cc)	6.3 (105 cc)
Bore & Stroke	2.125" x 1.5" (54 x 38 mm)	2.217" x 1.636" (56.3 x 41.6 mm)
Bearings	Main: Heavy duty ball. Rod: Needle roller	Main: Heavy duty ball. Rod: Needle roller
Piston Rings	2 cast iron compression rings	2 cast iron compression rings
Carburetor	Diaphragm type with choke. Fully enclosed external adjustments plus idler governor	Diaphragm type with choke. Fully enclosed external adjustments plus idler governor
Filtering System	Felt fuel filter. Rubber edged flocked air filter	Felt fuel filter. Rubber edged flocked air filter
Fuel Type	Regular grade automotive	Regular grade automotive
Fuel — Oil Mixture	40:1 with McCulloch oil	40:1 with McCulloch oil
Fuel Tank Capacity	2.6 US pints (1.23 L)	2.6 US pints (1.23 L)
Intake Valve	3rd port, tuned reed	3rd port, tuned reed
Clutch	Automatic centrifugal	Automatic centrifugal
Clutch Engaging Speed	2,800 RPM	2,800 RPM
Chain Oiler Capacity	.7 US pints (.33 L)	.7 US pints (.33 L)
Ignition	McCulloch waterproof high tension magneto	McCulloch waterproof high tension magneto
Breaker Point Gap	.019"-.020 (.5 mm)	.019"-.020 (.5 mm)
Coil Location	Outside flywheel. Fan cooled	Outside flywheel. Fan cooled
Timing	26° BTC	26° BTC
Spark Plug	Champion J8J Gap .025 (.63 mm)	Champion J8J Gap .025 (.63 mm)
Chain	McCulloch S-40 .058" gauge (1.47 mm)	McCulloch S-40 .058" gauge (1.47 mm)
Sprocket	7 tooth, .404" pitch (10.25 mm)	7 tooth, .404" pitch (10.25 mm)

*Stated saw weights are for power unit only and do not include cutting attachments.



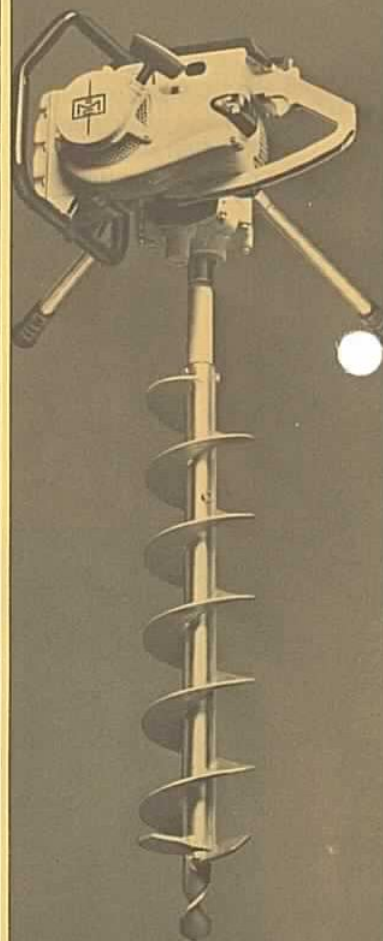
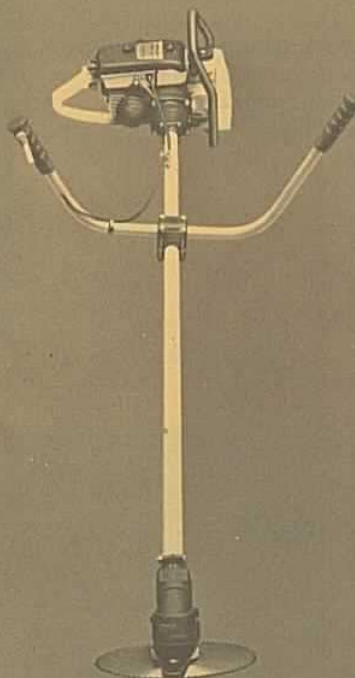
Brushcutter/Weedcutter

Cuts saplings and heavy brush on toughest terrain. Ideal for getting into hard-to-reach places, around barns and fences. Even prunes branches 6-inches thick. Comes with safe, comfortable carrying harness.



Portable Earth Drill

Quickest, easiest way on earth to set fenceposts, plant trees, make soil tests. It drills at any angle on any terrain. For safety, drill stops at idle speeds, spins only when you want it to. Takes 6-inch and 9-inch augers.



McCulloch really gets the job done

McCulloch Corporation, 6101 West Century Blvd., Los Angeles, California 90045
Lake Havasu City, Arizona

AFFILIATES: Malton, Ontario, Canada • Mechelen, Belgium •
Singapore • Seven Hills, N.S.W., Australia •
Buenos Aires, Argentina