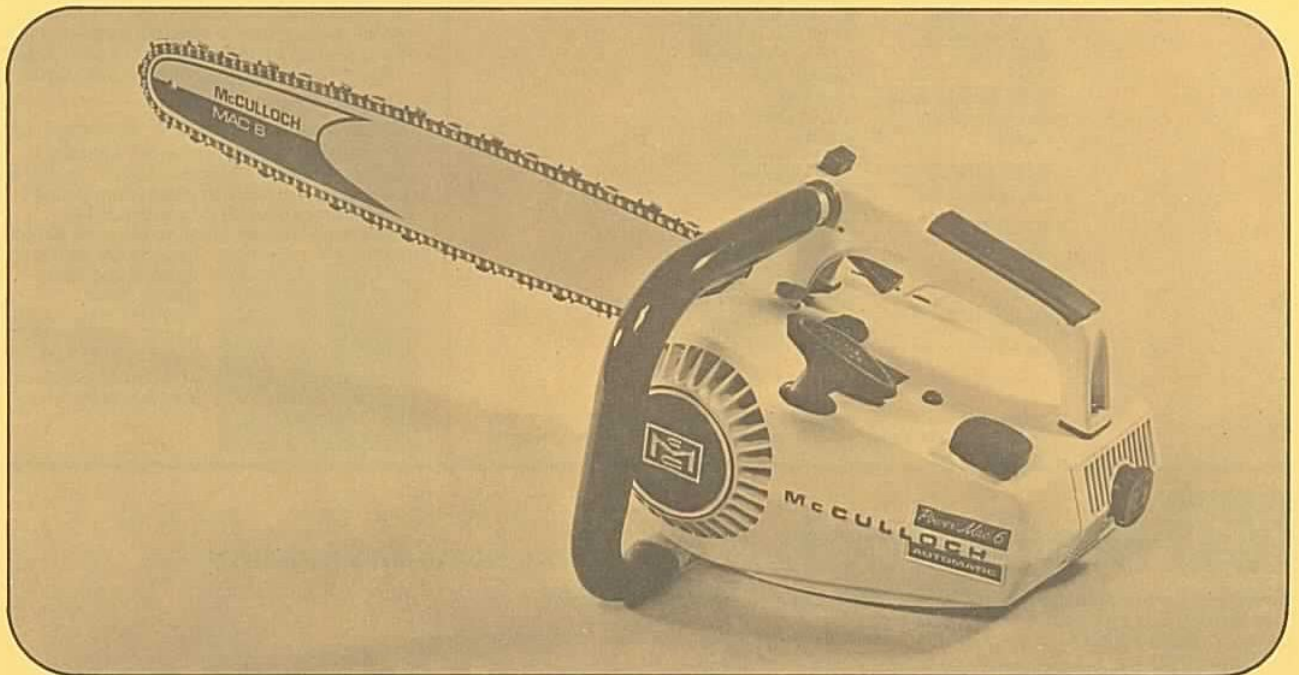
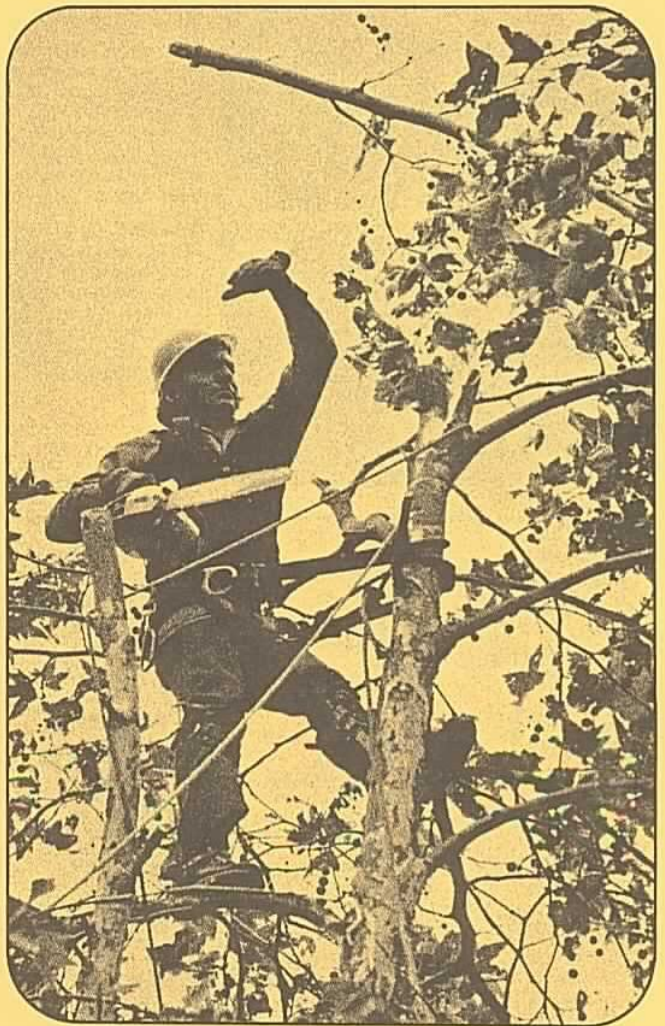


# McCulloch Power Mac 6 Automatic

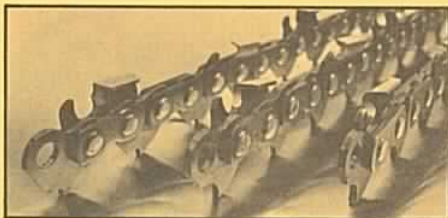
**Outcuts some saws  
Twice its weight**

The only professional saw available in the 6 lb.\* class. Rugged, tough, fast cutting, a natural for tree service work, sawmill limbing, construction jobs, all around farm use. So light and perfectly balanced, the Power Mac 6 handles more like a carving knife than a chain saw. Yet it is powerful enough to zip through an 8-inch log in 6-seconds. "Master Grip" handle is positioned directly over the saw's center of gravity permitting one-hand control between cuts. Power Mac 6 Automatic oils its own bar and chain as it cuts for extra ease and economy. Comes equipped with 14" McCulloch bar and chain plus deluxe "Master Grip" handle for extra comfort.

\*Less cutting attachments

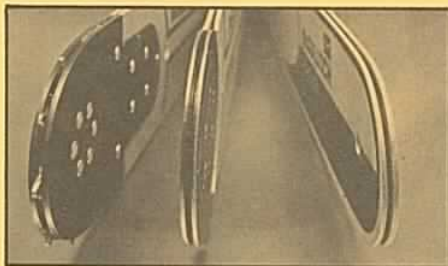


© McCulloch 1972

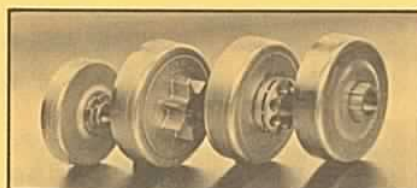


### McCulloch Bars & Chains

McCulloch chains now come in every type, pitch, gauge and configuration, including Super Pro, our new Full Chisel Cutter, Speed Mac, our new Semi-Chisel Cutter, and Pro Mac, our new Round-type Cutter. They're the finest quality chains made, yet they retail at less than comparable chains.



Now McCulloch has a new complete line of bars and chains, all designed expressly to give you the best cutting performance from McCulloch saws. McCulloch guide bars are specially contoured to fit precisely, hardened to resist wear, and machined from strong metals.



### McCulloch Sprockets

We also have a complete line of sprockets, drums and rims for every cutting need. Our new Super Pro Sprocket is a self-aligning rim sprocket, with a "floating" rim which is interchangeable without having to replace the drum. We also have Fixed Rim, Clover Leaf, Spur-Type with Drum and Spur-Type Sprockets—all precision-made for long life.

## McCulloch Chain Saw Features and Specifications

|                                       |   |
|---------------------------------------|---|
| <b>McCulloch Convenience Features</b> |   |
| Weight*                               | 6 lb 15 oz (3.13 kg)  |
| Guide Bar                             | 14" (35,56cm) Factory installed   |
| Overall Dimensions (outside frame)    | 7" H x 9 1/2" L x 7" W (178 x 241 x 178mm)                                      |
| Muffler                               | Louvered  |
| Easy Starting                         | Automatic rewind with nylon rope  |
| Bar/Chain Oiling                      | Automatic plus Manual   |
| Handle Frame                          | "Master Grip" with grouped controls   |
| <b>Engine Specifications</b>          |   |
| Power Unit                            | Single cylinder, two-cycle, high performance, air-cooled, loop scavenged engine |
| Displacement                          | 2.00 cu in (32,78cc)  |
| Bore & Stroke                         | 1.438" x 1.201" (36,52 x 30,51mm)   |
| Bearings                              | Needle-Anti-friction type   |
| Piston Rings                          | 2 cast iron compression rings   |
| Carburetor                            | Diaphragm type with choke. Fully enclosed; external adjustments                 |
| Filtering System                      | Felt fuel filter. Felt air filter   |
| Fuel Type                             | Regular grade automotive  |
| Fuel-Oil Mixture                      | 40:1 with McCulloch oil   |
| Fuel Tank Capacity                    | .54 US pints (0,256L)   |
| Intake Valve                          | 3rd port, piston timed  |
| Clutch                                | Automatic centrifugal   |
| Clutch Engaging Speed                 | 2,600 RPM   |
| Chain Oiler Capacity                  | .192 US pints (0,09L)   |
| Ignition                              | McCulloch waterproof high tension magneto                                       |
| Breaker Point Gap                     | .018" (0,457mm)   |
| Coil Location                         | Outside flywheel. Fan cooled  |
| Timing                                | 26° BTDC  |
| Spark Plug                            | AC-CS 45T (miniaturized) Gap .025" (0,625mm)                                    |
| Chain                                 | McCulloch PM250 .050" gauge (1,270mm)   |
| Sprocket                              | 8 tooth, .25" 6,35mm pitch, rim type  |

Features, specifications and prices subject to change without notice or obligation.  
\* Stated saw weights are for power unit only and do not include cutting attachments.



### McCulloch Custom Lubricant

A significant breakthrough in 2-cycle engine lubricants. It mixes with gasoline 3 times easier than conventional SAE 30 wt. oils at all temperatures, even down to -60°F. Yet it does an excellent job of lubricating, even at 100 to 1 gas/oil ratio. It features superior scuff-resistance, minimizes carbon deposits, rust and wear under all operating conditions. Best for chain saws, outboards, snowmobiles, motor cycles, lawn mowers and industrial use. And it's approved by the Boating Industry Association — meets or exceeds all of their standards.

### McCulloch Chain, Bar & Sprocket Oil

Special anti-wear formula can actually double chain life. Special "MOLY" additive gives extra lubrication protection during critical first seconds of cutting. Extra "tackiness" makes oil cling to chain at high speeds for better lubrication, less waste. Also contains new "anti-pitch" additive to keep cutting fast and smooth even in green, sappy wood.



# McCulloch for forest, farm, home and industry

McCulloch Corporation, 6101 West Century Blvd., Los Angeles, California 90045  
Lake Havasu City, Arizona  
Malton, Ontario, Canada  
Mechelen, Belgium  
Singapore  
Seven Hills, N.S.W., Australia  
São Paulo, Brazil

ADV 190117 Printed in U.S.A.