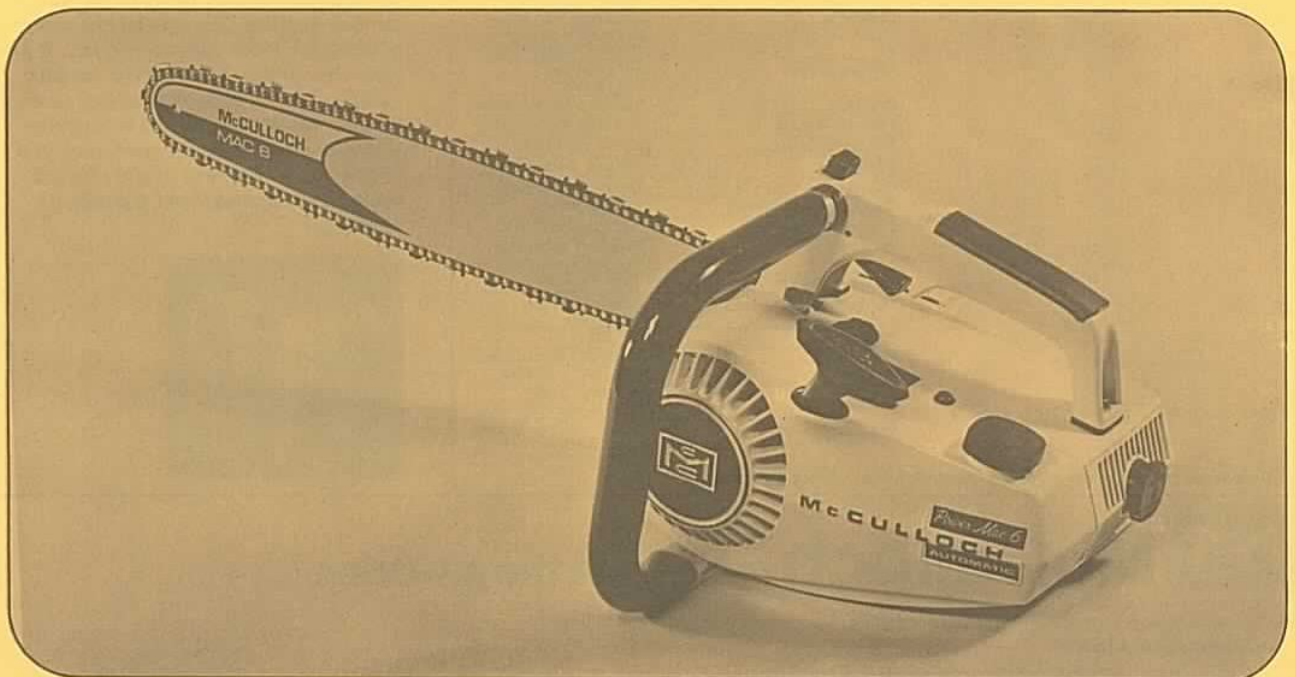
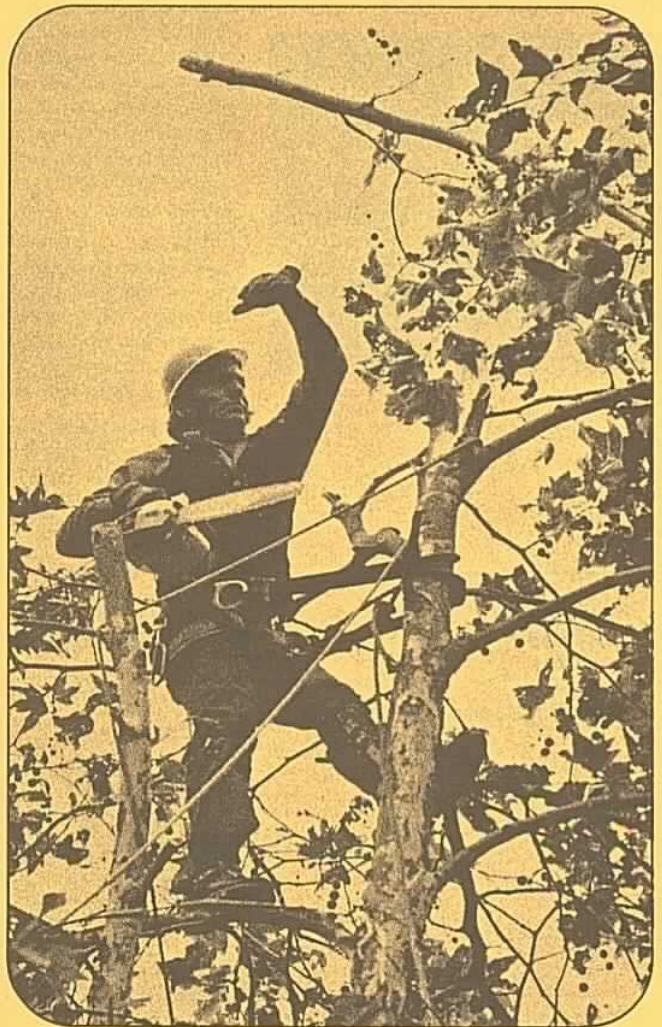


McCulloch Power Mac 6 Automatic

**Outcuts some saws
Twice its weight
Now at a new low price.***

The only professional saw available in the 6 lb.* class. Rugged, tough, fast cutting, a natural for tree service work, sawmill limbing, construction jobs, all around farm use. So light and perfectly balanced the Power Mac 6 handles more like a carving knife than a chain saw. Yet it is powerful enough to zip through an 8-inch log in 6-seconds. "Master Grip" handle is positioned directly over the saw's center of gravity permitting one-hand control between cuts. Power Mac 6 Automatic oils its own bar and chain as it cuts for extra ease and economy. Comes equipped with 14" McCulloch bar and chain plus deluxe "Master Grip" handle for extra comfort.

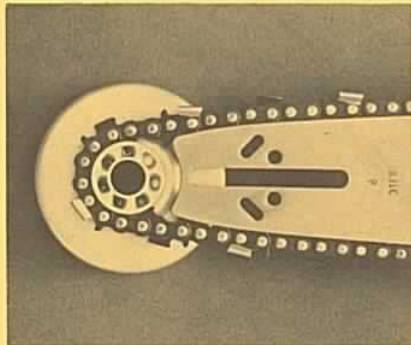
Power Mac 6 Automatic, 14" bar & chain; \$159.95*



*Manufacturer's suggested list price
†Less cutting attachments

© McCulloch 1972

McCulloch Bars & Chain



Unlike other brands, McCulloch bars and chains are designed for just one purpose: to give you the best cutting performance from your McCulloch engine. McCulloch guide bars are specially contoured to fit precisely, hardened to resist wear, and machined from strong metals. Their narrow design reduces pinching and binding in the cut, reduces weight too.

McCulloch low-profile chain has full chip clearance so it cuts faster and smoother in all woods. Top plates on cutter teeth are designed to eliminate chip jams. Side links are extra strong. Large bearing surfaces insure longer chain life because they resist wear, take more punishment.

When you team a McCulloch bar and chain with a McCulloch sprocket you've done all you need to do — the engine does the rest!

McCulloch Sprockets

Just as a racing car needs a special transmission to handle all the power the engine develops, it takes a precision sprocket to transmit full power from McCulloch's engine to the chain. Only McCulloch designs sprocket, bar and chain as an integrated unit then precision matches these important components to the engine. To meet the demands of these high-compression engines, McCulloch rim sprockets ride on caged needle bearings to reduce friction and eliminate chain "creep" at idle speeds. Special "slots" in the rim sprocket guide center-link drive-tangs for a smooth, belt-drive action while the rim supports side links to reduce chain wobble, jump, sag and chatter.

McCulloch Chain Saw Features and Specifications

McCulloch Convenience Features	Power Mac 6 Automatic Direct Drive
Weight*	6 lb 15 oz (3.13 kg)
Guide Bar	16" Factory Installed (40.6 mm)
Overall Dimensions (outside frame)	7" H x 9 1/2" L x 7" W (178 x 261 x 178 mm)
Muffler	Spark Arrester ("Sound Silencer" optional at extra cost)
Easy Starting	Automatic Rewind with Nylon rope
Bar/Chain Oiling	Automatic plus Manual
Handle Frame	"Master Grip" with grouped controls
Engine Specifications	
Power Unit	Single cylinder, two-cycle, high performance, air-cooled, loop scavenged engine
Displacement	2.00 cu in (35cc)
Bore & Stroke	1.438" x 1.201" (36.5 x 30.6 mm)
Bearings	Needle—Anti-Friction type
Piston Rings	2 cast iron compression rings
Carburetor	Diaphragm type with choke. Fully enclosed, external adjustments
Filtering System	Felt fuel filter. Felt air filter
Fuel Type	Regular grade automotive
Fuel—Oil Mixture	40:1 with McCulloch oil
Fuel Tank Capacity	.54 US pints (.256 L)
Intake Valve	3rd port, piston timed
Clutch	Automatic centrifugal
Clutch Engaging Speed	2,600 RPM
Chain Oiler Capacity	.192 US pints (.09 L)
Ignition	McCulloch waterproof high tension magneto
Breaker Point Gap	.018" (.5 mm)
Coil Location	Outside flywheel. Fan cooled
Timing	26° BTC
Spark Plug	AC-CS 45T (miniaturized) Gap .025" (.63 mm)
Chain	McCulloch S-25, .050" gauge (1.25 mm)
Sprocket	8 tooth, .25" (6.35 mm) pitch, rim type

*Stated saw weights are for power unit only and do not include cutting attachments.

New McCulloch Chain, Bar & Sprocket Oil

This special anti-wear formula can actually double chain life by providing lubrication during critical first seconds of cutting when ordinary oil has not yet reached bar and chain. A special MOLY additive clings to the chain at all times, even during high-speed cutting for better lubrication, less waste. A new anti-pitch additive keeps chain moving smoothly through green and sappy woods. Available in 1-quart graduated plastic bottles.

McCulloch 40:1 Oil

Only McCulloch recommends a 40:1 gas/oil mix throughout their product line. Because McCulloch engines are built to precise engine tolerances. Many manufacturers specify a thick 16:1 gas/oil ratio for their engines. Our 40:1 oil has many advantages. It can reduce oil costs. It protects the engine by reducing harmful carbon deposits which cause engine wear. It increases power, creates less smoke and adds many hours of spark plug and engine life. Available in new graduated plastic quart bottles, cans, 6-packs, or case lots.



McCulloch really gets the job done

McCulloch Corporation, 6101 West Century Blvd., Los Angeles, California 90045

Lake Havasu City, Arizona

AFFILIATES: Malton, Ontario, Canada • Mechelen, Belgium •

Singapore • Seven Hills, N.S.W., Australia •

Buenos Aires, Argentina