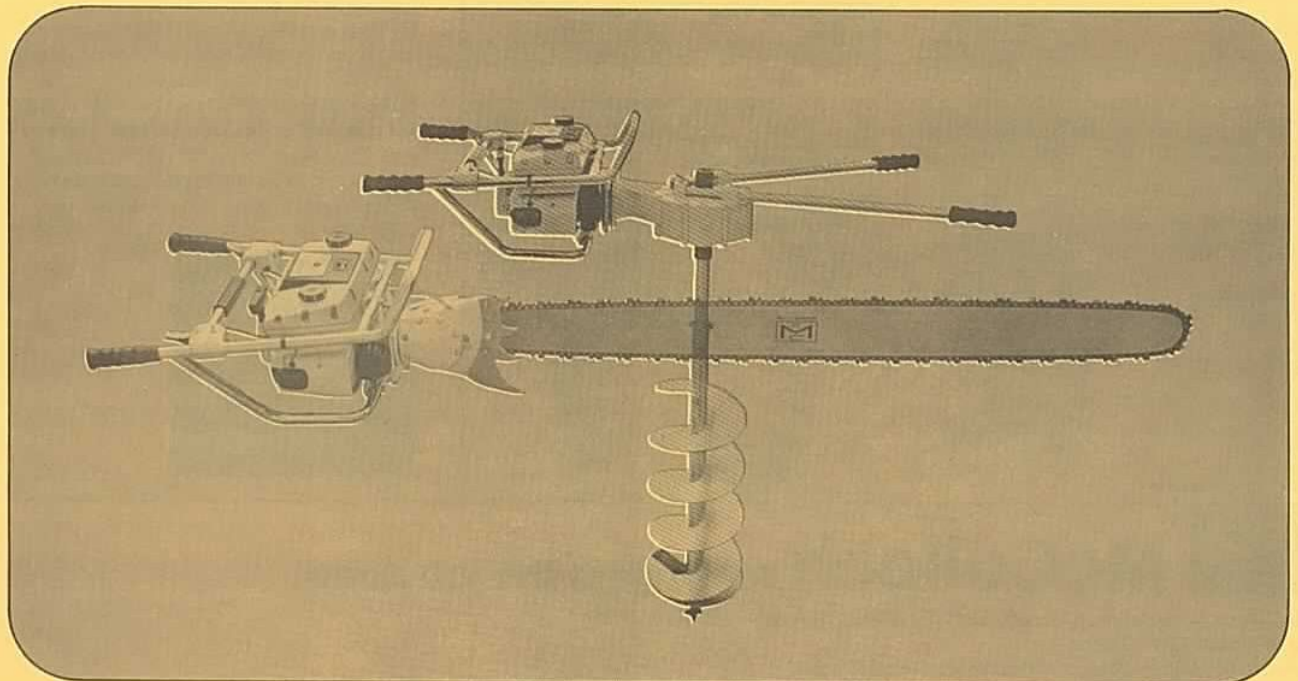
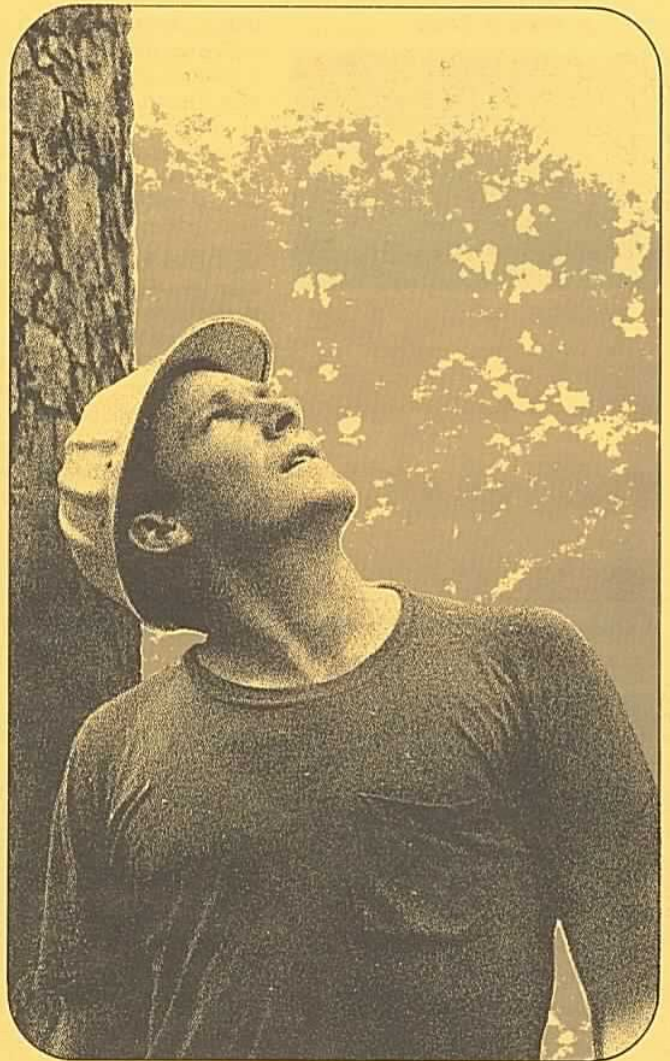


McCulloch 940

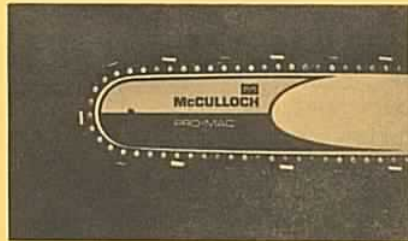
The "heavy-duty"
top of the
professional line.

Here's a saw you can use alone. Or with a buddy. It's the most powerful one-or-two man gear-drive built today. Takes up to the largest straight bar you can find. Fells giant trees. And with its swivel transmission, the bar can be quickly turned to any position.

Got holes to dig? The 940 quickly converts to a powerful high speed earth drill. Handles 6 inch, 9 inch, or 12 inch, earth augers (152.4 mm, 228.6 mm or 304.8 mm) which swivel to any angle. There is ample power for fast digging in any type earth, including clay. For safety, drill stops spinning at engine idle. Runs a full 65 minutes on tank of fuel. Here's a tool as versatile as it is dependable.



McCulloch Bars & Chain



Unlike other brands, McCulloch bars and chains are designed for just one purpose: to give you the best cutting performance from your McCulloch engine. McCulloch guide bars are specially contoured to fit precisely, hardened to resist wear, and machined from strong metals. Their narrow design reduces pinching and binding in the cut, reduces weight too.

McCulloch low-profile chain has full chip clearance so it cuts faster and smoother in all woods. Top plates on cutter teeth are designed to eliminate chip jams. Side links are extra strong. Large bearing surfaces insure longer chain life because they resist wear, take more punishment.

When you team a McCulloch bar and chain with a McCulloch sprocket you've done all you need to do — the engine does the rest!

McCulloch Sprockets

Just as a racing car needs a special transmission to handle all the power the engine develops, it takes a precision sprocket to transmit full power from McCulloch's engine to the chain. Only McCulloch designs sprocket, bar and chain as an integrated unit and then precision matches these important components to the engine. To meet the power demands of its larger, high-compression engines, McCulloch sprockets are made of high-quality steel and specially processed for perfect pitch and roundness. Each sprocket is precision matched to exacting dimensions of chain center-links; teeth are heat-treated to make them extra hard and wear-resistant. That's why McCulloch gives you a powerful advantage nobody else can match.

McCulloch 940 Chain Saw Features, Specifications & Prices

McCulloch Convenience Features	940 Gear Drive (4.22:1) 360° Swivel Trans.
Weight*	35 1/4 lbs (16.2 kg)
Guide Bar	McCulloch "Pro-Mac" plus Earthdrill attachment
Overall Dimensions (outside frame)	12" H x 28" L x 21" W (.30 x .71 x .53 m)
Muffler	Improved Spark Arrester
Easy Starting	Automatic Rewind with nylon rope
Bar/Chain Oiling	Manual Oiling
Handle Frame	Two rubber hand grips
Engine Specifications	
Power Unit	Single cylinder, two-cycle, high performance, air-cooled, loop scavenged engine
Displacement	6.3 cu in (105 cc)
Bore & Stroke	(2.217" x 1.635") (56 x 41.5 mm)
Bearings	Main: Heavy duty ball. Rod: Needle roller
Piston Rings	2 cast iron compression rings
Carburetor	Diaphragm type with fixed high-speed jet and integral overspeed device
Filtering System	Screen fuel filter. Flocced air filter
Fuel Type	Regular grade automotive
Fuel — Oil Mixture	40:1 with McCulloch oil
Fuel Tank Capacity	4.5 US pints (2130 cc)
Intake Valve	3rd port, tuned reed
Clutch	Automatic Centrifugal
Clutch Engaging Speed	2,150 RPM
Chain Oiler Capacity	.19 US pints (900 cc)
Ignition	McCulloch waterproof high tension magnet
Breaker Point Gap	.019"-.020" (.5 mm)
Coil Location	Outside flywheel. Fan cooled
Timing	26° BTC
Spark Plug	Champion J8J Gap .025" (.6 mm)
Chain	McCulloch SL-9, .058" gauge (1.45 mm)
Sprocket	7 tooth, 9/16" pitch (14.3 mm)

*less cutting attachments

EARTH DRILL SPECIFICATIONS

Bearings	Ball and Needle
Gear and Worm	Bronze — 60 Tooth Single Thread
Shaft Worm Gear	Steel — Heat Treated
Transmission Capacity	2 Pints (.94L) S.A.E. 140 Gear Oil
Drum Clutch	Deep Drawn Steel
Direction of Drive	Clockwise
Extension — Auger Conveyor	Alloy Steel Steel
Point Assembly — Auger Blade — Cutter	Steel Hard Faced Steel Hard Faced
Grip Handle	Rubber
Weight of Earth Drill, less engine, extension and auger	30 lbs. (13.6 Kg)
Auger Weight—6" (152.4mm)	14 lbs. (6.3 Kg)
9" (228.6mm)	20 lbs. (9.0 Kg)
12" (304.8mm)	22 lbs. (10 Kg)
Extension Adaptor allows hole depth to	37" (.9 m)
Extension Adaptor Weight	4 1/2 lbs. (2.0 Kg)
Gear Ratio	20:1
Output Speed	110 rpm

CHAIN SAW ATTACHMENTS

Item	Part No.	Price†
Heavy Duty Earth Drill Drive Unit and Model 940 Engine	—	\$661.95
Complete with 6" Auger	—	692.95
Complete with 9" Auger	—	696.95
Complete with 12" Auger	—	702.95
Earth Drill Drive Unit only	60851	178.00
6" Auger only	25074B	37.70
9" Auger only	25075B	42.50
12" Auger only	25076B	49.00

940 Chain Saw Prices

19"	\$589.95
25"	597.95
31"	606.95
37"	612.95
43"	617.95
51"	629.95
60"	643.95
Power Unit Only	\$568.95
Power Unit Only (Less Transmission)	\$489.95

New McCulloch Chain, Bar & Sprocket Oil

This special anti-wear formula can actually double chain life by providing lubrication during critical first seconds of cutting when ordinary oil has not yet reached bar and chain. A special MOLY additive clings to the chain at all times, even during high-speed cutting for better lubrication, less waste. A new anti-pitch additive keeps chain moving smoothly through green and sappy woods. Available in 1-quart graduated plastic bottles.

McCulloch 40:1 Oil

Only McCulloch recommends a 40:1 gas/oil mix throughout their product line. Because McCulloch engines are built to precise engine tolerances. Many manufacturers specify a thick 16:1 gas/oil ratio for their engines. Our 40:1 oil has many advantages. It can reduce oil costs. It protects the engine by reducing harmful carbon deposits which cause engine wear. It increases power, creates less smoke and adds many hours of spark plug and engine life. Available in new graduated plastic quart bottles, cans, 6-packs, or case lots.



 **McCulloch** really gets the job done

McCulloch Corporation, 6101 West Century Blvd., Los Angeles, California 90045

Lake Havasu City, Arizona

AFFILIATES: Malton, Ontario, Canada • Mechelen, Belgium •

Singapore • Seven Hills, N.S.W., Australia •

Buenos Aires, Argentina

ADV 190047 Printed in U.S.A.

Features, specifications and prices subject to change without notice or obligation.

†Manufacturer's suggested list prices Effective May 3, 1971