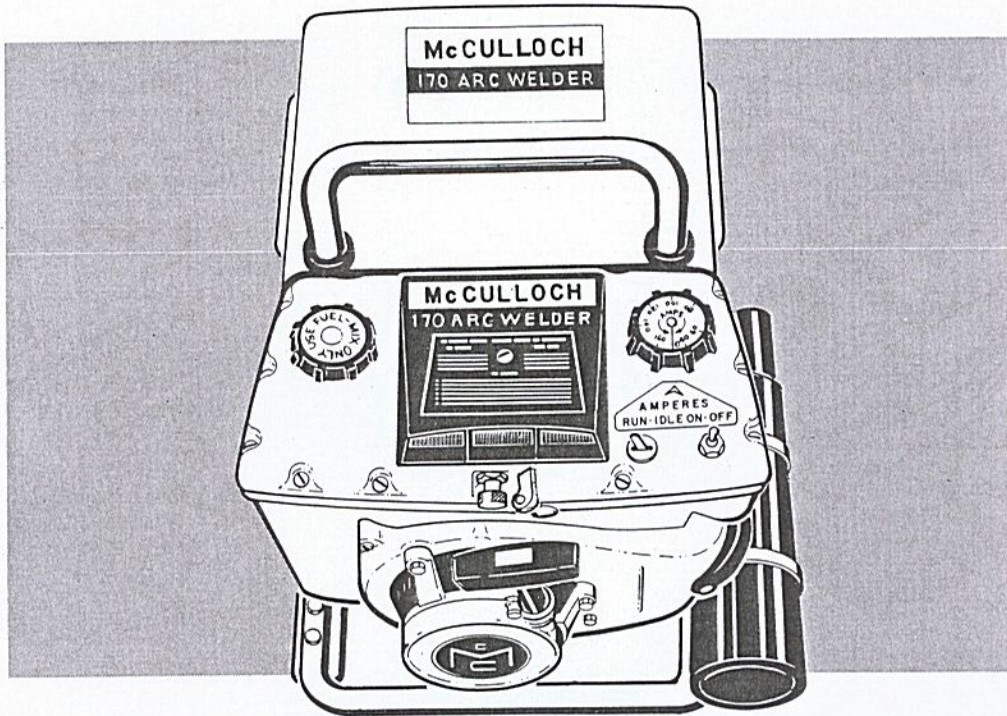


McCulloch 170 Arc Welder

ILLUSTRATED PARTS LIST



The following pages contain item-numbered illustrations and lists which give the description and the quantity of each service part for this model.

Part numbers of service parts will be found on the Parts List Sheet covering the serial number block of the specific model. Locate in this book the figure and item numbers of the parts in which you are interested. Then turn to the appropriate Parts List Sheet and following the figure and item numbers will be found the part number of the service part.

When changes in service parts occur, either in the illustration, part numbers or in quantity required, these differences will be explained or shown on the appropriate Parts List Sheet.

NOVEMBER 1969

	Page
Figure 1. McCulloch 170 Arc Welder - Exploded View	2
Figure 2. Capacitor	4
Figure 3. Control Panel Assembly	6
Figure 4. Rectifier & Alternator Assemblies	8
Figure 5. Fuel Tank & Output Control Assemblies	10
Figure 6. Carburetor, Adapter & Dash Pot Assemblies	12
Figure 7. Powerhead Assembly	14



McCULLOCH

170 ARC WELDER

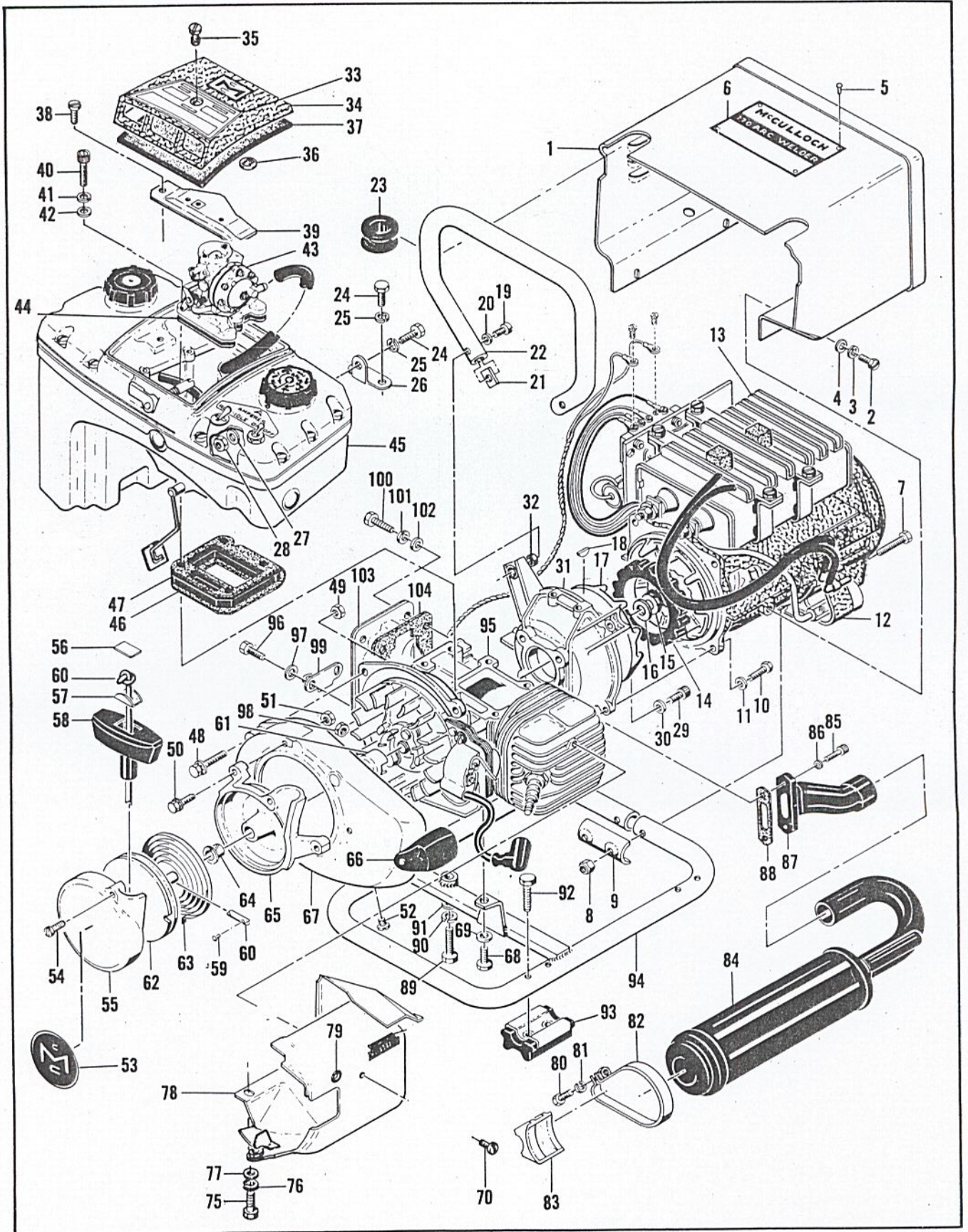


Figure 1. McCulloch 170 Arc Welder - Exploded View

FIGURE 1. McCULLOCH 170 ARC WELDER — EXPLODED VIEW

Item No	Partnumber	Description	Units per Assy
1	62270	Hood and Screw assy alt.	1
2	103469	. Screw Hex hd 10-24x3/8	4
3	101194	. Lock washer §10	4
4	100002	. Washer §10	4
5	103121	. Rivet	4
6	62913	. Nameplate welder	1
7	102130	Screw Hex hd I/4-20x1-1/2	2
8	101143	Nut hex 1/2-20	2
9	51660	Clamp frame	1
10	100882	Screw hex hd 1/2-20x3/4	4
11	105043	Lockwasher 1/2	4
12		Alternator assy (see fig.4)	1
13		Capacitor (see fig.2)	1
14	62940	Sleeve coupling	1
15	110048	Nut hex special lock 3/8-24	1
16	104343	Washer 3/8	1
17	68847	Coupling driver	1
18	103879	Key woodruff	1
19	101977	Screw fil hd 1/4-20x3/4	2
20	105043	Lockwasher 1/2	2
21	57133	Saddle frame	2
22	58933	Handle	1
23	110076	Grommet	2
24	102388	Screw hex hd 1/2-20x3/4	3
25	101194	Lockwasher §10	2
26	58151	Brace angle	1
27	100352	Washer 1/2	1
28	101191	Nut hex 1/2-20	1
29	100360	Screw socket hd 1/2-20x7/8	4
30	105043	Lockwasher 1/2	4
31	58413	Adapter Alternator	1
32	104914	. Insert taplok 1/2-20	2
33	62916A	Nameplate	1
34	55484	Cover assy air cleaner	1
35	55032A	. Screw air cleaner cover	1
36	103741	. Nut special	1
37	67931	Screen assy air cleaner	1
38	102500	Screw pan hd 10-24x1/2	1
39	69862	Anchor assy air cleaner	1
40	104560	Screw socket hd 10-24x1-1/2	4
41	100240	Lockwasher §10	4
42	100002	Washer §10	4
43		Carburator & Adapt. Assy (see fig.6)	1
44	69851	Gasket carburator adapt.	1
45		Fuel tank and output control Assy (see fig.5)	1
46	65625	Gasket fuel tank insulator	1
47	53684A	Insulator fuel tank	1
48	104816	Screw 10-24x1-1/4 (Sems)	3
49	101326	Nut hex 10-24	2
50	104815	Screw 10-24x7/8 (Sems)	3
51	101191	Nut hex 10-24	3
52	106090	Screw pan hd 10-24x1/2	1

Item No	Partnumber	Description	Units per Assy
53	62192	Plate Trademark	1
	60130	Starter Assy	1
54	104396	. Screw Pan hd 10-24x3/8	2
55	60647	. Cover Starter	1
56	57232	. Plate starter handle	1
57	57231	. Cup starter handle	1
58	57230	. Handle starter	1
59	101136	. Rivet	1
60	28716	. Rope starter	1
61	57790	. Ratchet starter	1
62	57792	. Drum starter	1
63	51665	. Spring starter rewind	1
64	57535	. Bushing starter base	2
65	60646	. Base starter	1
66	57565	Cover Assy sparkplug	1
67	58314A	Fan housing	1
68	100882	Screw hex hd 1/2-20x3/4	1
69	100005	Washer 1/2	1
70	106090	Screw	1
75	100732	Screw hex hd 1/2-20x5/8	2
76	100153	Lockwasher 1/2	1
77	100005	Washer 1/2	2
78	62258	Shroud and Deflector assy	1
79	101230	Grommet	1
80	102388	Screw hex hd 10-24x5/8	2
81	101194	Lockwasher §10	2
82	68270	Clamp assy muffler	2
83	58610	Spacer muffler support	2
84	58557A	Muffler assy	1
85	104895	Screw socket hd 10-24x5/8	2
86	103174	Lockwasher §10	2
87	58433A	Header Exhaust	1
88	58422	Gasket exhaust header	1
89	100881	Screw hex hd 1/2-20x2-1/4	1
90	100153	Lockwasher 1/2	1
91	100005	Washer plain 1/2	1
92	103258	Screw hex hd 1/2-20x1-1/8	8
93	58589	Pad assy mounting	4
94	58580B	Frame assy mounting	1
95		Powerhead assy (see fig.7)	1
96	102121	Screw hex hd 1/2-20x7/8	2
97	100005	Washer 1/2	2
98	101143	Nut hex 1/2-20	2
99	58151	Brace fuel tank	1
100	101982	Screw hex hd 1/2-20x1	4
101	100153	Lockwasher 1/2	4
102	100005	Washer 1/2	4
103	58139A	Cover crankcase bottom	1
104	65654	Gasket crankcase bottom cov.	1

170 ARC WELDER

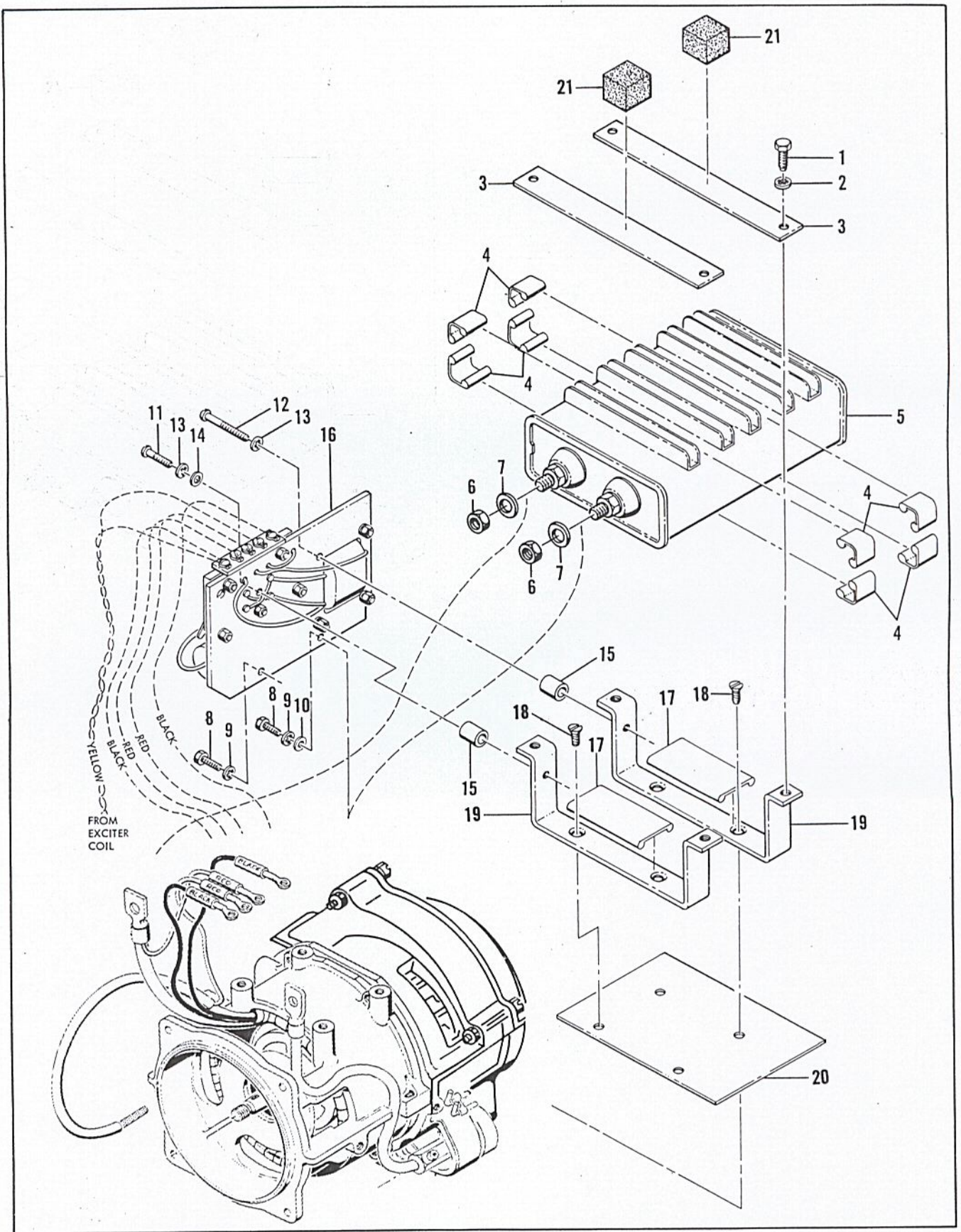


Figure 2. Capacitor.

FIGURE 2. CAPACITOR

Item N°	Partnumber	Description	Units per Assy
1	102762	Screw hex hd 10-24x $\frac{1}{2}$	4
2	101194	Lockwasher §10	4
3	58581	Clamp capacitor	2
4	58595	Absorber shock (short)	8
5	58594A	Capacitor	1
6	110314	. Nut hex jam 5/16-18	2
7	110315	. Lockwasher 5/16	2
8	102762	Screw hex hd 10-24x $\frac{1}{2}$	2
9	101194	Lockwasher §10	2
10	100003	Washer §10	1
11	103750	Screw rd hd 8-32x7/8	1

Item N°	Partnumber	Description	Units per Assy
12	105254	Screw Fil hd 8-32x1-3/4	1
13	100057	Lockwasher §8	2
14	100080	Washer plain §8	1
15	58603	Insulator long	2
16		Control assy (see fig.3)	1
17	58735	Absorber shock (long)	2
18	100852	Screw flat hd 10-24x $\frac{1}{2}$	4
19	58582A	Bracket capacitor mounting	2
20	58819	Reflector heat	1
21	58929	Cushion hood	2

170 ARC
WELDER

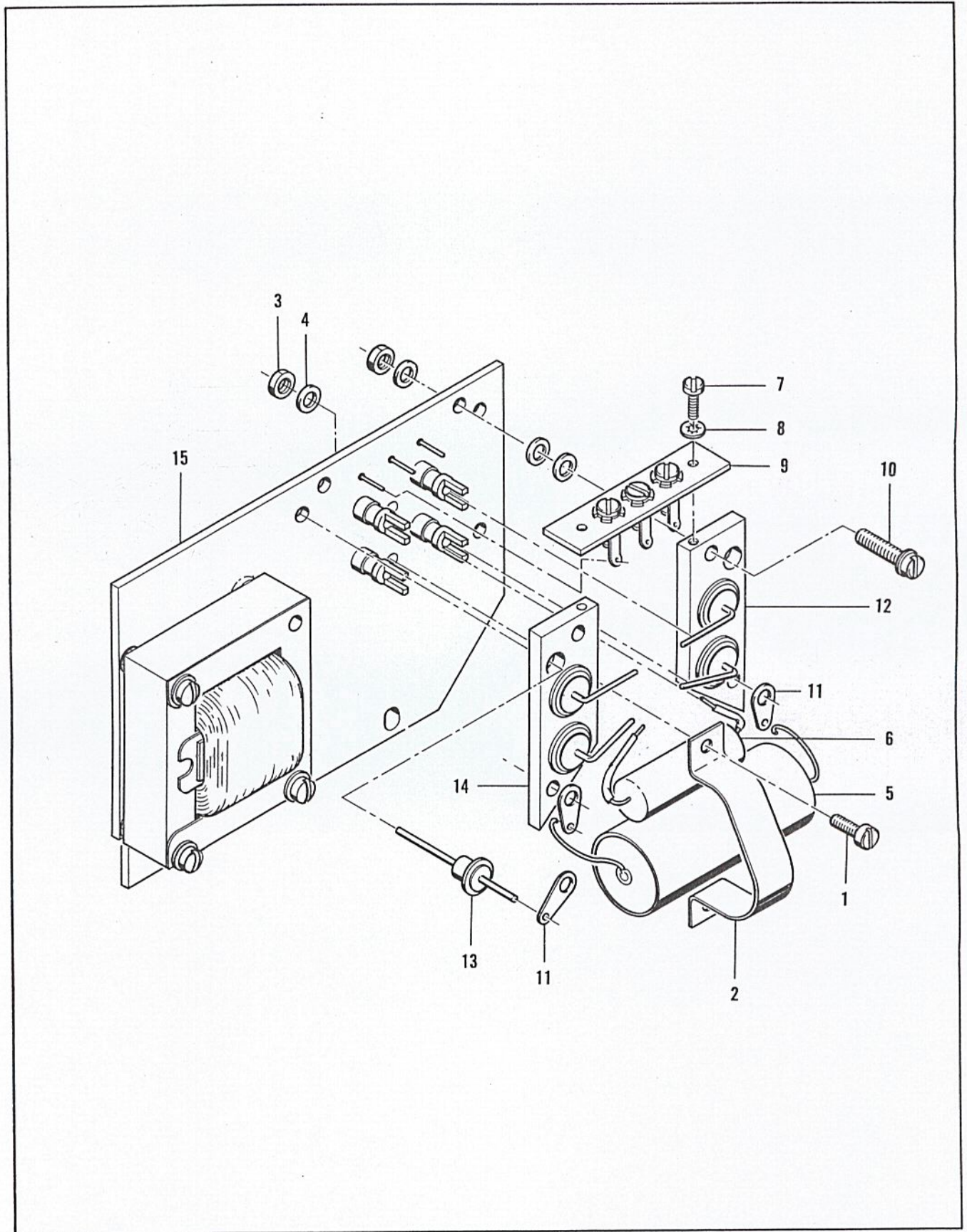


Figure 3. Control Panel Assembly.

FIGURE 3. CONTROL PANEL ASSEMBLY

Item N°	Partnumber	Description	Units per Assy
	58648B	Control Assy	1
1	100362	. Screw Fil hd 8-32x3/8	1
2	58576A	. Clamp condenser	1
3	100955	. Nut hex 8-32	5
4	100080	. Washer §8	13
5	104964	. Condenser field	1
6	104963	. Condenser surge	1
7	104769	. Screw pan hd 6-32x3/8	2

Item N°	Partnumber	Description	Units per Assy
8	103556	. Lockwasher §6	2
9	58753	. Strip assy terminal	1
10	110011	. Screw pan hd 8-32x11/16	4
11	104998	. Terminal §8	3
12	60780	. Diode block assy	1
13	104966	. Diode	1
14	60779	. Diode block assy	1
15	58754B	. Panel and Transformer A.	1

170 ARC WELDER

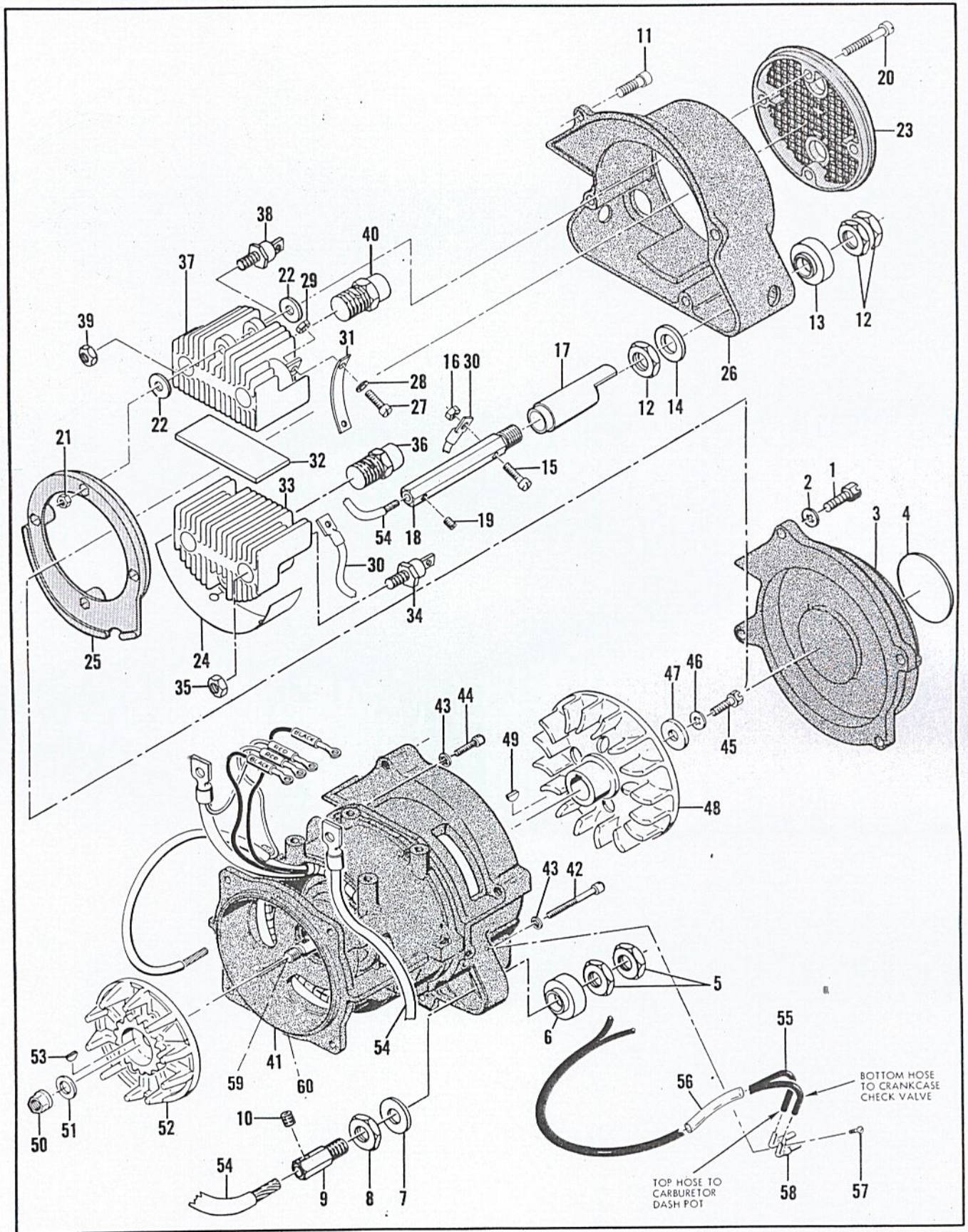


Figure 4. Rectifier and Alternator Assemblies.

FIGURE 4. RECTIFIER AND ALTERNATOR ASSEMBLIES

Item No	Partnumber	Description	Units per Assy
1	100882	Screw hex hd 1/4-20x3/4	5
2	100153	Lockwasher 1/4	5
3	62193	Cover fan	1
4	62192	. Plate trademark	1
5	58613	Nut connector	4
6	58540	Sleeve insulator	2
7	58612	Washer insulator	2
8	58613	Nut connector	2
9	58528	Connector assy cable	2
10	58530	. Screw set	2
	63697	Rectifier assy	1
11	105224	. Screw Skt hd 1/4-20x1	4
12	58613	. Nut connector retaining	6
13	58540	. Sleeve insulator	2
14	58612	. Washer insulator	2
15	110081	. Screw fil hd 10-24x1	2
16	101191	. Nut hex 10-24	2
17	66417	. Sleeve connector	2
18	62398	. Connector assy	2
19	58530	.. Screw set	2
20	102144	. Screw fil hd 10-24x2-1/4	4
21	101191	. Nut hex 10-24	4
22	62405	. Washer cushion	4
23	58953	. Grill rectifier	1
24	62395	. Baffle	1
25	58954	. Cover fan	1
26	66690	. Housing rectifier	1
27	110416	. Screw Fl hd 10-24x3/4	4
28	105476	. Washer §10	4
29	110082	. Nut hex 10-24	4
30	62396	. Cable assy rectifier	2

Item No	Partnumber	Description	Units per Assy
31	63822	. Busbar assy	2
32	62393	. Separator heatsink	1
	62392	.. Heatsink assy rev.Pol.	1
33	62390	.. Heatsink	1
34	62239	.. Rectifier	2
35	100703	.. Nut 10-32	2
36	58950	.. Connector	1
	62389	. Heatsink assy fwd Pol.	1
37	62390	.. Heatsink	1
38	62239	.. Rectifier	2
39	100703	.. Nut 10-32	2
40	58950	.. Connector	1
41	60412	Alternator assy welder	1
42	102135	. Screw fil hd 10-24x2	3
43	101194	. Lockwasher §10	6
44	102143	. Screw fil hd 10-24x3/4	3
45	100882	Screw hex hd 1/4-20x3/4	1
46	100153	Lockwasher 1/4	1
47	58689	Washer special 1/4	1
48	58815	Fan cooling	1
49	103879	Key woodruff	1
50	110048	Nut hex special lock 3/8-24	1
51	104349	Washer 3/8	1
52	58773	Coupling driven	1
53	103879	Key woodruff	1
54	58644A	Cable assy	2
55	60268	Hose engine section	1
56	62804	Sleeve	1
57	103928	Screw 8-32x1/2	2
58	60244A	Tube assy idle control	1
	60412	Alternator Housing	1
59	58808	. Rotor & Bearing Assy	1
60	58806	. Housing Assy	1

170 ARC WELDER

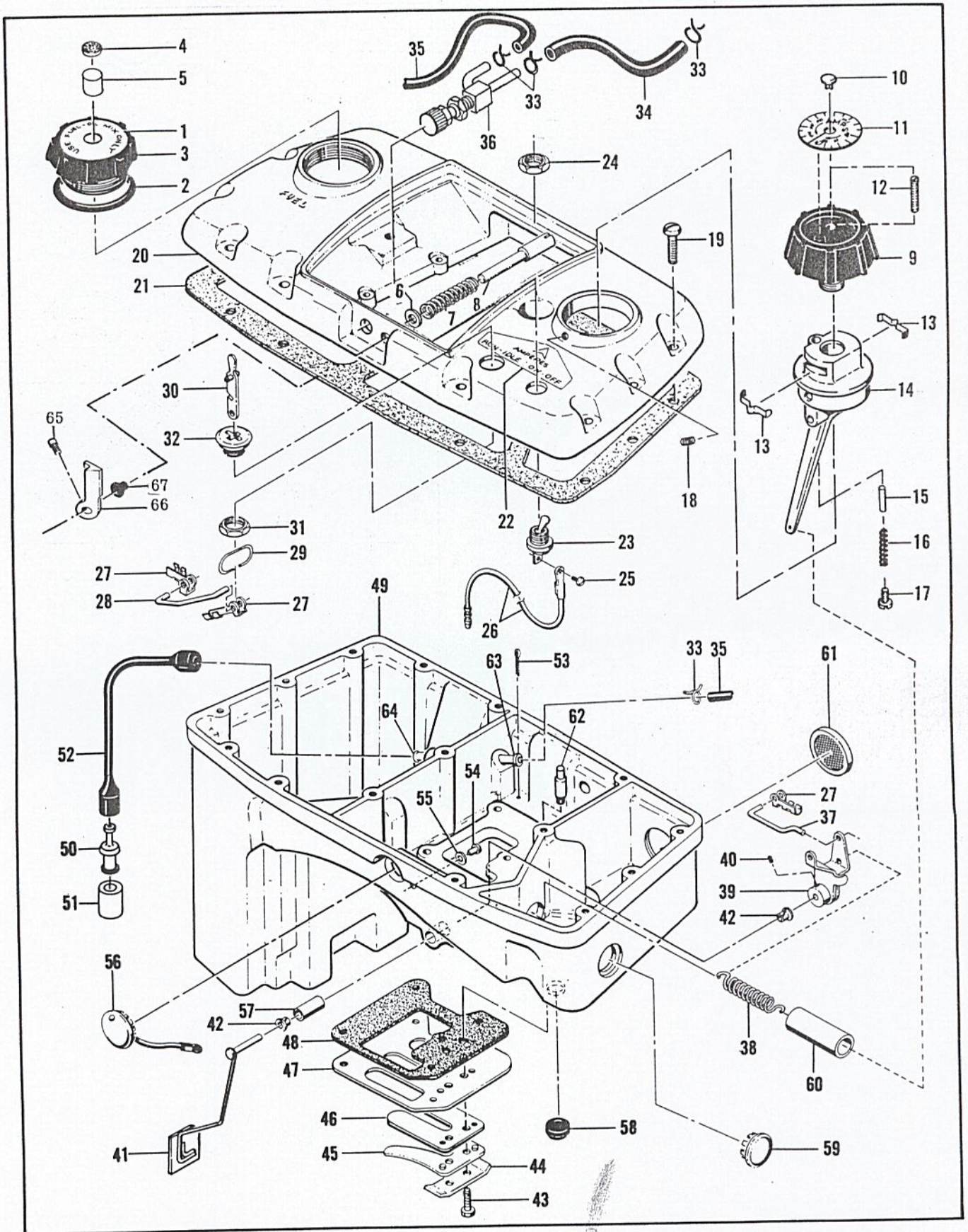


Figure 5. Fuel Tank and Output Control Assemblies.

FIGURE 5. FUEL TANK AND OUTPUT CONTROL ASSEMBLIES

Item N°	Partnumber	Description	Units per Assy
1	65838	Decal fuel cap	1
2	101348	"O"Ring	1
3	62438	Cap assy fuel	1
4	55063	. Filter fuel cap	1
5	62439	. Plug felt	1
6	100644	Washer plain $\frac{1}{4}$	1
7	19236	Spring	1
8	58218	Extension choke shaft	1
	61098	Control assy output	1
9	61099	. Knob assy	1
10	110225	.. Button plug	1
11	61101	.. Decal	1
12	61116	.. Screw special	1
13	61104	. Spring detent	2
14	61102	. Adapter and Arm Assy	1
15	100484	. Pin stop 1/8-5/8	1
16	61105	. Spring clamp	1
17	101101	. Screw rd hd 8-32x $\frac{1}{4}$	1
18	103724	Screw set 10-32x3/16	1
19	104397	Screw pan hd 10-24x7/8	15
20	65455	Cover assy fuel tank	1
21	65656	Gasket fuel tank cover	1
22	65837	Decal controls	1
23	65796	Switch Assy ignition	1
24	104810	. Nut Hex 15/32-32	1
25	103934	. Screw 6-32x $\frac{1}{4}$ (Sems)	1
26	65797	Wire assy ignition	1
27	59159	Clip throttle link	3
28	58658	Rod run-idle control	1
29	58734	Spring throttle control	1
30	58651A	Lever assy run-idle sw.	1
31	104972	Nut hex 9/16-27	1
32	58535	Body run-idle switch	1

Item N°	Partnumber	Description	Units per Assy
33	104857	Clamp hose	4
34	65711	Hose fuel short	1
35	62906	Hose fuel long	1
36	62891	Valve fuel shutoff	1
37	58463	Rod throttle control	1
38	62342A	Spring governor	1
39	58407A	Lever assy governor	1
40	104154	. Screw set 8-32x $\frac{1}{4}$	1
41	62252	Arm Assy governor	1
42	104924	Bushing governor arm	2
43	104476	Screw hex hd 8-32x5/16	2
44	51480	Lockplate	1
45	48591	Guard reed valve	1
46	48593	Valve reed	1
47	60218	Plate reed valve	1
48	65657	Gasket fuel tank	1
49	65709	Fuel tank assy	1
50	65613	. Filter and valve assy	1
51	61159	.. Filter	1
52	68711	. Hose fuel pickup	1
53	104310	. Cotter pin	1
54	110006	. Rivet	1
55	101871	. Washer	1
56	51396A	. Cover Assy adjustment	1
57	62256	. Tube governor shaft	1
58	101283	. Grommet	1
59	104956	. Button plug	1
60	58649	. Tube governor spring	1
61	48911	. Filter	1
62	60206	. Housing assy check valve	1
63	58498	. Nipple tube	1
64	58766	. Nipple tube	1
65	103183	Screw Set 5-40	1
66	58222	Lever choke	1
67	58237	Grommet	1

170 ARC
WELDER

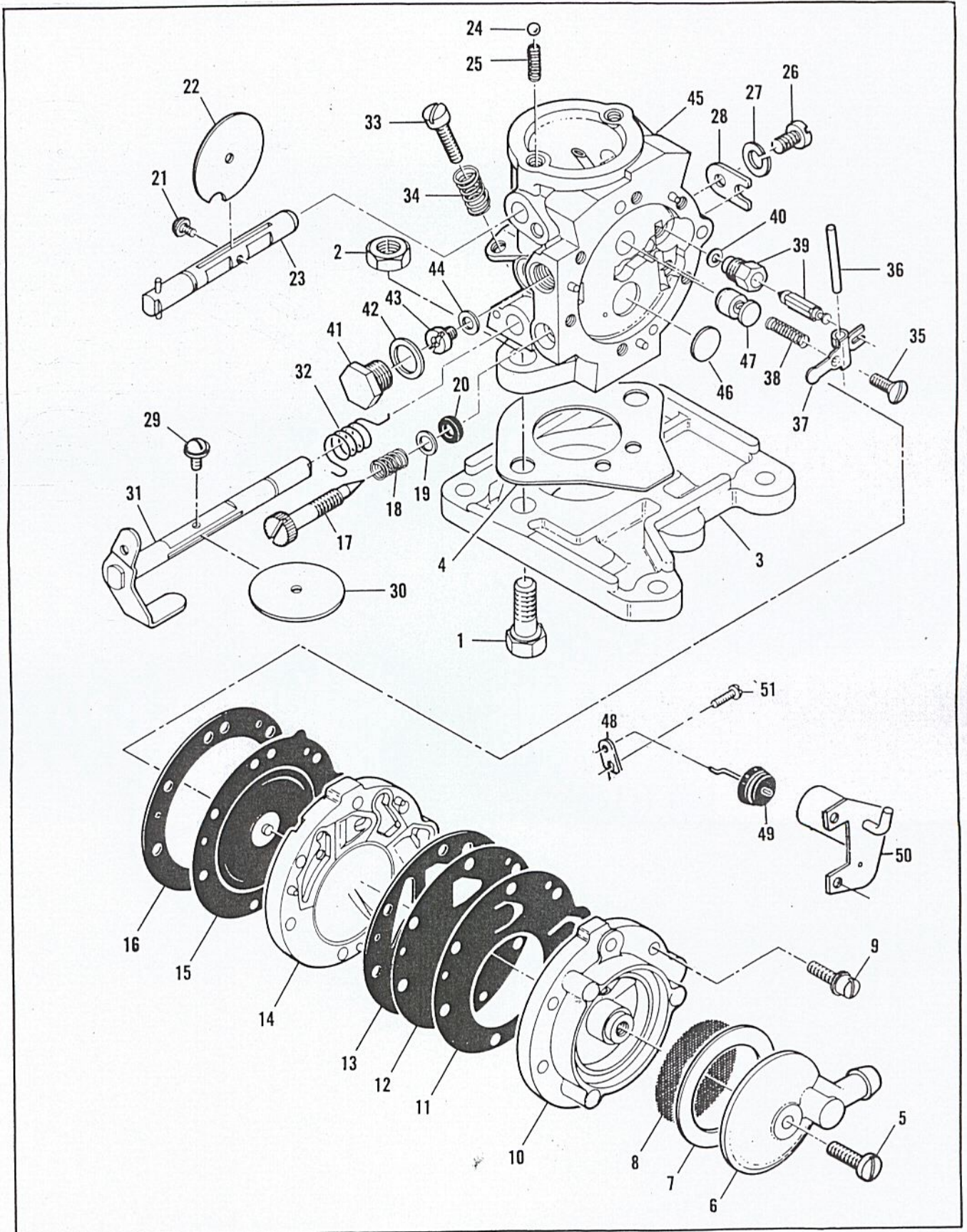


Figure 6. Carburetor, Adapter, and Dash Pot Assemblies.

FIGURE 6. CARBURETOR, ADAPTER AND DASH POT ASSEMBLY

Item N°	Partnumber	Description	Units per Assy
1	-102157	Screw hx hd $\frac{1}{4}$ -20x5/8	2
2	101143	Nut hx $\frac{1}{4}$ -20	2
3	-69853	Adapter carburetor	1
4	-65586	Gasket carburetor	1
	-69856	Carburetor Assy	1
5	*51701	. Screw fuel strainer cover	1
6	51599	. Cover fuel strainer	1
7	48762	. Gasket fuel strainer Cover	1
8	*48761	. Screen fuel strainer	1
9	51597	. Screw Assy fuel pump Body	6
10	84032	. Body fuel pump	1
11	*84030	. Diaphragm check valve	1
12	*84029	. Diaphragm fuel pump	1
13	65592	. Gasket fuel pump	1
14	84027	. Cover diaphragm	1
15	*66167	. Diaphragm metering	1
16	65591	. Gasket diaphragm	1
17	*52935	. Needle idle mix	1
18	*52936	. Spring	1
19	52937	. Washer	1
20	52938	. Packing needle	1
21	51721	. Screw assy	1
22	84026	. Shutter choke	1
23	84025	. Shaft assy choke	1
24	100071	. Ball choke friction	1
25	52930	. Spring choke friction	1
26	51717	. Screw	1
27	100252	. Lockwasher	1

Item N°	Partnumber	Description	Units per Assy
28	51716	. Clip throttle shaft	1
29	*51721	. Screw assy	1
30	84041	. Shutter throttle	1
31	84039	. Shaft throttle	1
32	84040	. Spring return	1
33	*52940	. Screw idle speed adj.	1
34	*51705	. Spring	1
35	*66644	. Screw	1
36	*84033	. Pin inlet valve	1
37	*84032	. Lever inlet valve	1
38	*66404	. Spring Inlet lever	1
39	*84034	. Needle and seat inlet	1
40	51708	.. Gasket inlet valve	1
41	84037	. Plug main fuel jet	1
42	52941	. Gasket	1
43	*84035	. Jet main fuel (0.041 orifice)	1
	84057	. Jet main fuel (0.043 orifice)	Alt
	84058	. Jet main fuel (0.039 orifice)	Alt
	84059	. Jet main fuel (0.037 orifice)	Alt
44	84036	. Gasket main fuel jet	1
45	84024	. Body carburetor	1
46	*51583	.. Plug welch	1
47	84038	.. Nozzle check valve	1
	*84042	Gasket & Packing set	
	84043	Repair parts kit	
48	60210	Lever dashpot and idle c.	1
49	60199A	Plunger assy idle control	1
50	69857	Cylinder assy	1
51	104814	Screw pan	1

* Indicates parts contained in Repair Parts Kit §84043.

NOTE :

Alternate main jet orifices are for use in adjusting high speed fuel mixture. Use next smaller orifice if mixture is too rich. Use next larger orifice if mixture is too lean.

Ordinarily the 0.041 and 0.039 orifices will cover the general broad range of cutting conditions. Do not use the 0.037 orifice below 4000 feet altitude. Use the 0.043 orifice only if an extremely rich mixture is desired.

170 ARC WELDER

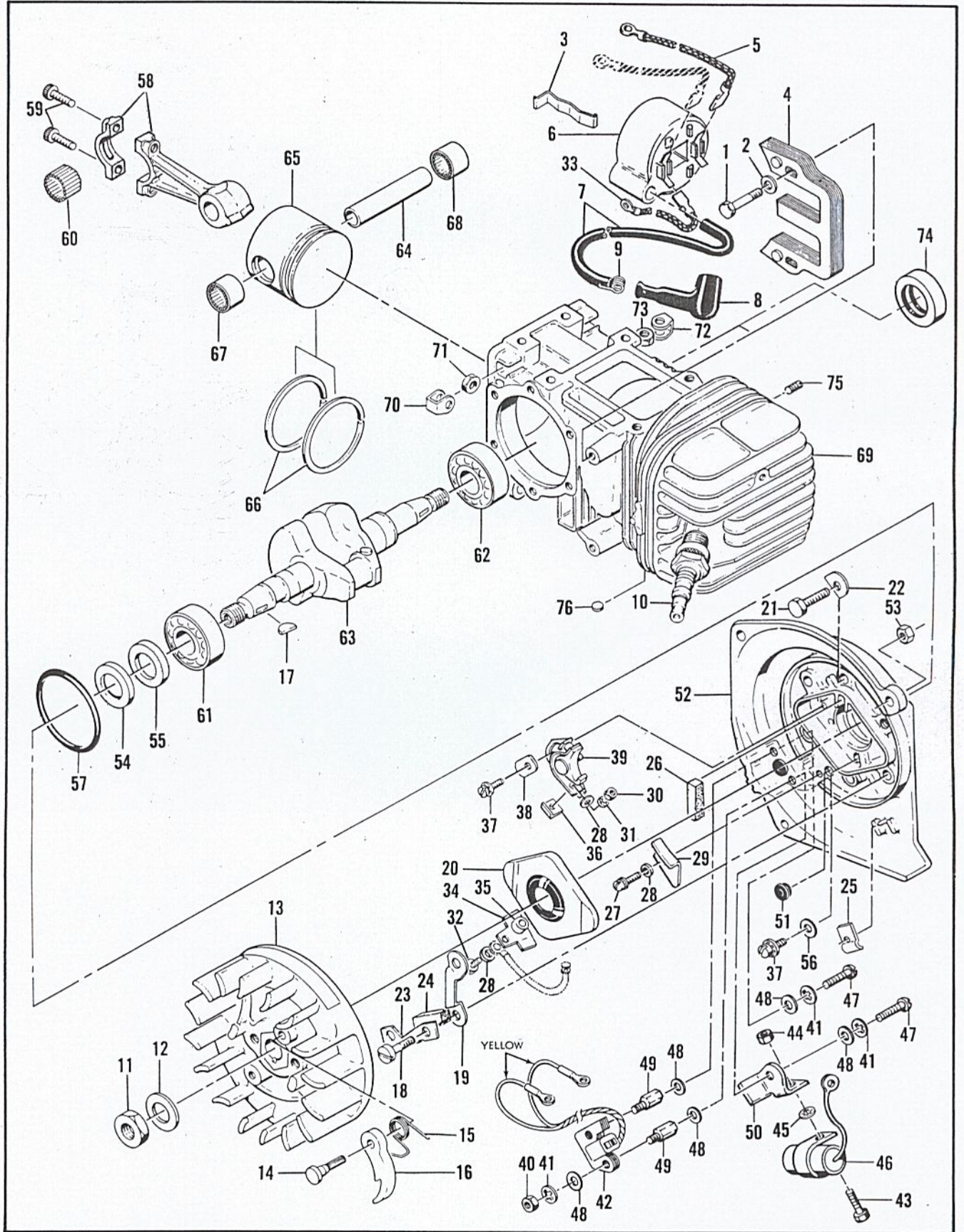


Figure 7. Powerhead Assembly.

FIGURE 7. POWERHEAD ASSEMBLY

Item No	Partnumber	Description	Units per Assy
1	104815	Screw Hex hd 10-24x7/8	2
2	100352	Washer plain §10	2
3	63634	Retainer coil	1
4	51251	Lamination assy coil	1
5	63639	Wire Assy ground	1
6	63637	Coil and Terminal assy	1
7	63640	. Wire assy sparkplug	1
8	62926	.. Boot sparkplug	1
9	62932	.. Connector sparkplug wire	1
10		Spark plug 14 mm	1
11	101179	Nut hex 7/16	1
12	101270	Washer special	1
13	65768	Flywheel & Pawl assy	1
14	36144B	. Pin starter pawl	2
15	50582	. Spring starter pawl	2
16	24093	. Pawl starter	2
17	103879	Key woodruff	1
18	102763	Screw hex hd 10-24x3/4	4
19	55977	Clip breaker box cover	2
20	55766B	Cover assy breaker box	1
21	102763	Screw hx hd 10-24x3/4	2
22	36388	Lockplate	1
23	57815	Strap seal	1
24	50664	Seal breaker box drain	1
25	104230	Speednut	1
26	54184	Wiper felt	1
27	110055	Screw 8-32x3/8	1
28	100080	Washer plain §8	3
29	57829	Clamp ignition switch	1
30	104551	Nut hex 8-32	1
31	104553	Lockwasher §8	1
32	110338	Screw hex hd 8-32x½	1
33	65789	Wire assy primary	1
34	55782A	Insulator wire assy	1
35	57769	Insulator ignition screw	1
36	57770A	Insulator breaker spring	1
37	104733	Screw 8-32x½ (Sems)	2
38	57767A	Lockplate	1
39	57765B	Breaker assy	1

Item No	Partnumber	Description	Units per Assy
40	104551	Nut hex 8-32	2
41	104553	Lockwasher §8	4
42	58661A	Coil assy Exciter	1
43	104476	Screw Hex hd 8-32x5/16	1
44	100955	Nut hex 8-32	1
45	100057	Lockwasher §8	1
46	50074	Condenser	1
47	100690	Screw rd hd 8-32x½	2
48	100080	Washer plain §8	6
49	62081	Stud exciter coil	2
50	62152	Bracket condenser	1
51	58665	Grommet special	1
52	60947A	Cover assy crankcase	1
53	101326	. Nut hex 10-24	3
54	57897	. Seal oil	1
55	57898	. Seal oil	1
56	55778E	. Washer breaker retainer	1
57	104523	"O"Ring	1
58	47903	Connecting rod asy	1
59	60210A	. Screw socket hd	2
60	102742	. Roller needle	24
61	110311	Bearing ball	1
62	104490	Bearing ball	1
63	58128	Crankshaft	1
64	62866	Pin piston	1
65	62872	Piston assy	1
66	58699A	. Ring set piston (2rings)	1
67	62867	. Bearing needle	1
68	62868	. Bearing needle (closed end)	1
69	58486A	Cylinder assy crankcase	1
70	18556A	Retainer nut	6
71	105394	. Nut Hex ¼-20	6
72	28053	. Retainer nut	2
73	101326	. Nut hex 10-24	2
74	104486	. Seal oil	1
75	110034	. Insert taplok	2
76	110340	. Plug expansion ½	3

IDLE CONTROL, CABLE ASSEMBLIES AND ACCESSORIES

Item No	Partnumber	Description	Units per Assy
1	60778B	Valve assy idle control	1
2	60762A	. Plunger control valve	1
3	60763A	. Body control valve	1
4	103198	. "O"Ring	2
5	60764	. Button valve plunger	1
6	106022	. Screw rd hd 6-20x3/8	4
7	100295	. Lockwasher §6	4
8	100153	. Lockwasher internal	1
9	60219A	. Clip valve attaching	1
10	60269	Tube idle control cable	1
11	58435	Cable assy ground	1
12	58436	Cable assy electrode	1
13	110064	Connector tweco male	2
14	110085	Cover tweco connector	2
15	58707	Cable extension 12 ft	1

Item No	Partnumber	Description	Units per Assy
16	58629	Portakit welder	1
17	58444	Helmet welder	1
18	36248	Wrench spark plug	1
19	65799	Manual instruction	1
21	62873	Piston assy 0.010 in. overs.	1
22	58831	. Ring set piston 0.010 in.	1
23	62888	Piston assy 0.020 in. overs.	1
24	47825	. Ring set piston 0.020 in.	1
25	62889	Piston assy 0.030 in. overs.	1
26	47826	. Ring set piston 0.030 in.	1
27	60226A	Hose dual tube 450 ft	1
28	101522	Wrench 5/32 Allen	1
29	65712	Timing guide	1