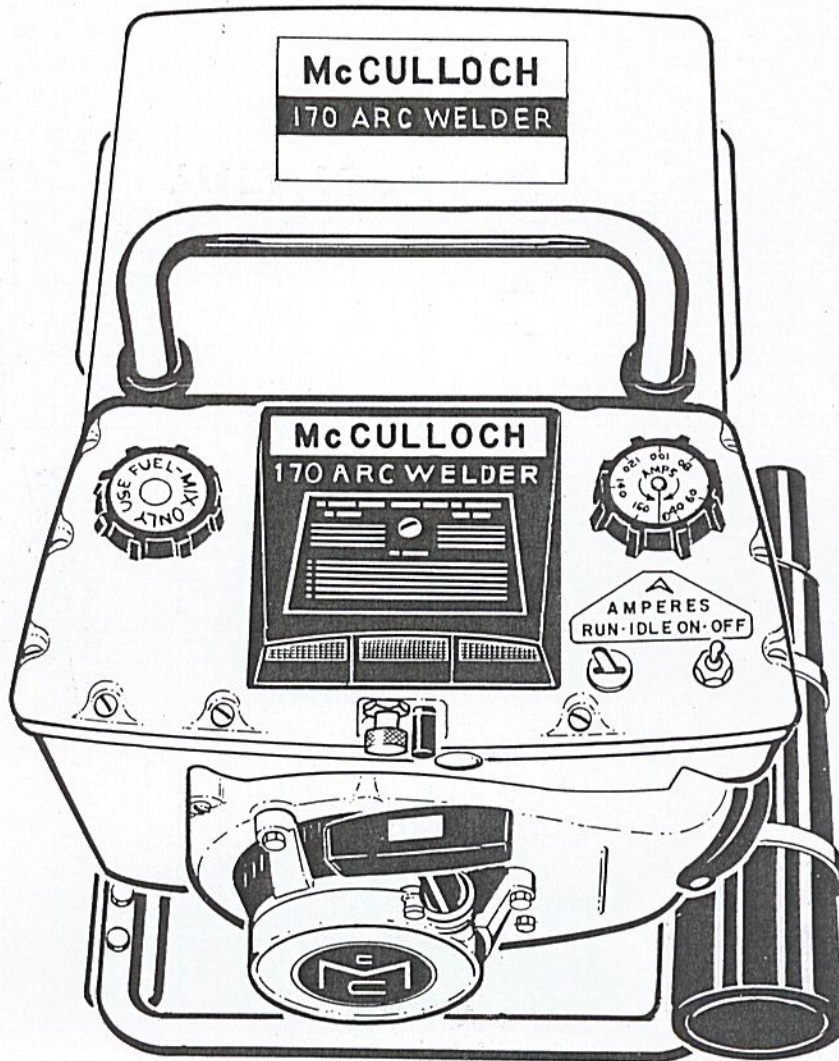


McCULLOCH 170 ARC WELDER

P/N 62400

ILLUSTRATED PARTS LIST

JULY 1966



The following pages contain an illustrated parts list for the McCulloch 170 Arc Welder. It is important that the serial number of your welder be included whenever spare parts are ordered. The parts should also be compared visually with those illustrated in the parts list.

	Page
Figure 1. McCulloch 170 Arc Welder - Expl. View	2
Figure 2. Control Assembly and Capacitor	4
Figure 3. Rectifier and Alternator Assemblies	6
Figure 4. Fuel Tank & Output Control Assemblies	8
Figure 5. Carburetor, Adapter & Dash Pot Assembly	10
Figure 6. Powerhead Assembly	12



McCULLOCH

170 ARC WELDER

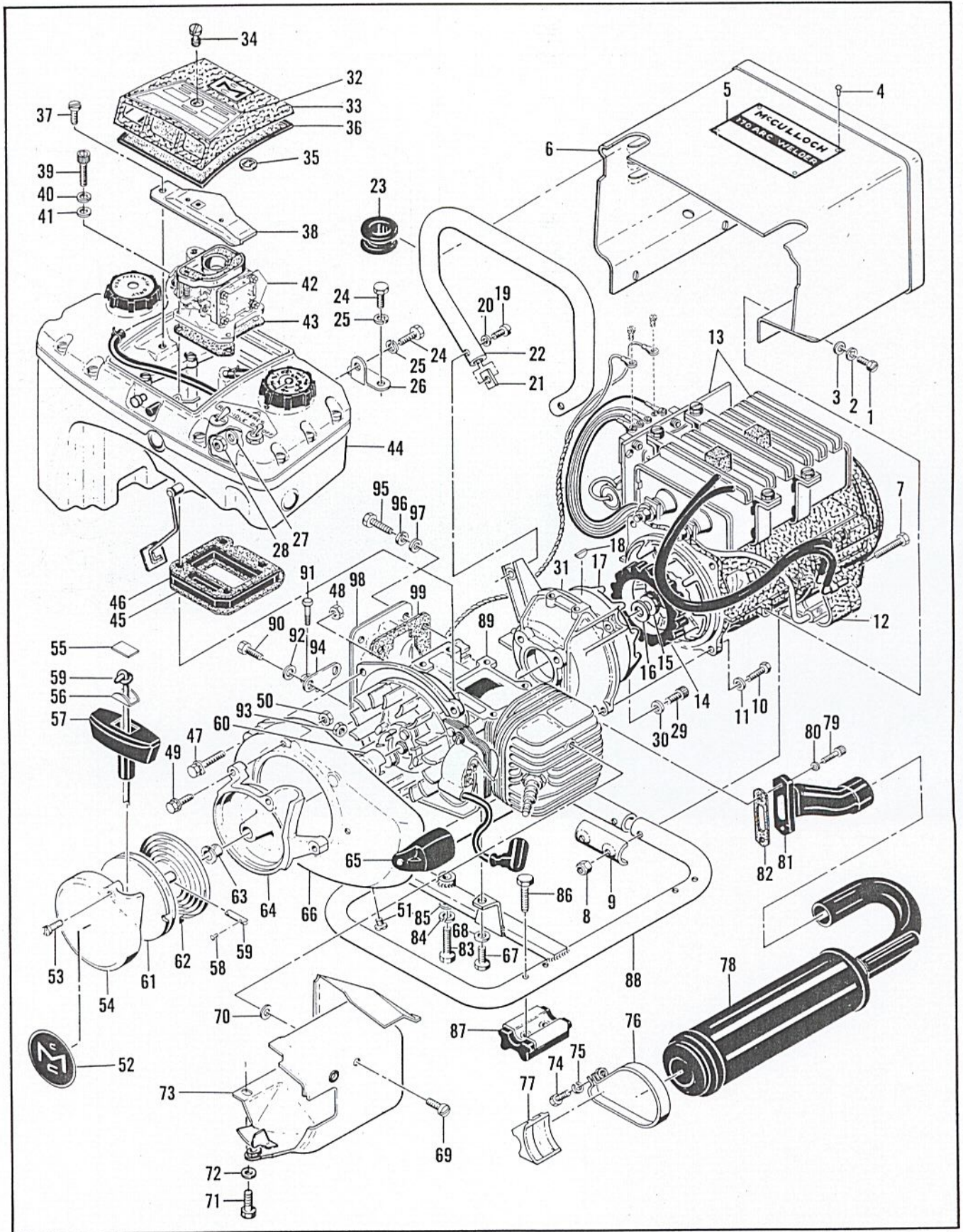


Figure 1. McCulloch 170 Arc Welder - Exploded View

FIGURE 1. McCULLOCH 170 ARC WELDER - EXPLODED VIEW

Index No.	Part Number	Nomenclature	Units Per Assy
	62270	Hood and Screw Assy - Alternator	1
1	103469	. Screw - Hex hd 10-24 x 3/8 in. lg	4
2	101194	. Lockwasher - #10	4
3	100002	. Washer - Plain #10	4
4	103121	. Rivet	4
5	58654A	. Nameplate - Welder	1
6		. Hood - Welder (Order Hood and Screw Assy #62270)	1
7	102130	Screw - Hex hd 1/4-20 x 1-1/2 in. lg	2
8	101143	Nut - Hex 1/4-20	2
9	51660	Clamp - Frame	1
10	100882	Screw - Hex hd 1/4-20 x 3/4 in. lg	4
11	105043	Lockwasher - 1/4 in.	4
12		Alternator Assy (See Figure 3)	1
13		Control Assy and Capacitor (See Figure 2)	1
14	62940	Sleeve - Coupling	1
15	110048	Nut - Hex special lock 3/8-24	1
16	104349	Washer - Plain 3/8 in.	1
17	58774A	Coupling - Driver	1
18	103879	Key - Woodruff	1
19	101977	Screw - Fil hd 1/4-20 x 3/4 in. lg	2
20	105043	Lockwasher - 1/4 in.	2
21	57133	Saddle - Frame	2
22	58933	Handle	1
23	110076	Grommet	2
24	102388	Screw - Hex hd 1/4-20 x 3/4 in. lg	3
25	101194	Lockwasher - #10	2
26	58151	Brace - Angle	1
27	100352	Washer - Plain 1/4 in.	1
28	101191	Nut - Hex 1/4-20	1
29	100360	Screw - Socket hd 1/4-20 x 7/8 in. lg	4
30	105043	Lockwasher - 1/4 in.	4
31	58413	Adapter - Alternator	1
32	58478A	Nameplate	1
33	55484	Cover Assy - Air cleaner	1
34	55032A	. Screw - Air cleaner cover	1
35	103741	. Nut - Special	1
36	55498	Screen Assy - Air cleaner	1
37	102500	Screw - Pan hd 10-24 x 1/2 in. lg	1
38	58266	Anchor Assy - Air cleaner	1
39	104560	Screw - Socket hd 10-24 x 1-1/2 in. lg	4
40	100240	Lockwasher - #10	4
41	100002	Washer - Plain #10	4
42		Carburetor and Adapter Assy (See Figure 5)	1
43	58483	Gasket - Carburetor adapter	1
44		Fuel Tank and Output Control Assy (See Figure 4)	1
45	53768A	Gasket - Fuel tank	1
46	53684A	Insulator - Fuel tank	1
47	104816	Screw - 10-24 x 1-1/4 in. lg (SEMS)	3
48	101326	Nut - Hex 10-24	2
49	104815	Screw - 10-24 x 7/8 in. lg (SEMS)	3
50	101191	Nut - Hex 10-24	3
51	104922	Screw - Pan hd 10-24 x 3/8 in. lg	1
52	62192	Plate - Trademark	1
	60130	Starter Assy	1
53	104396	. Screw - Pan hd 10-24 x 3/8 in. lg	2
54	60647	. Cover - Starter	1
55	57232	. Plate - Starter handle	1
56	57231	. Cup - Starter handle	1
57	57230	. Handle - Starter	1
58	101136	. Rivet	1
59	28716	. Rope - Starter	1
60	57790	. Ratchet - Starter	1
61	57792	. Drum - Starter	1

This list is continued on page 5

170 ARC WELDER

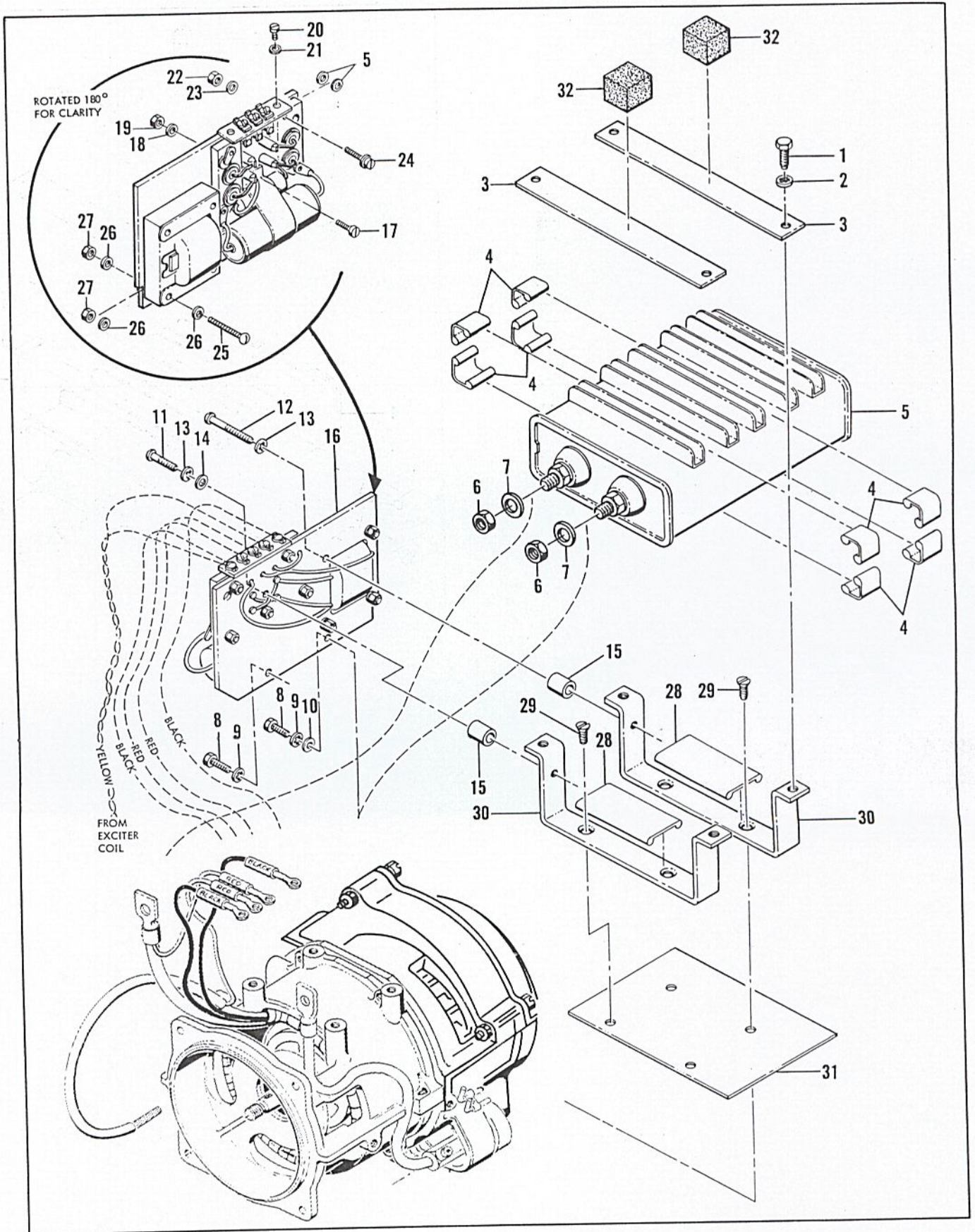


FIGURE 1. McCULLOCH 170 ARC WELDER - EXPLODED VIEW (CONT)

Index No.	Part Number	Nomenclature	Units Per Assy
62	51665	. Spring - Starter rewind	1
63	57535	. Bushing - Starter base	2
64	60646	. Base - Starter	1
65	57565	Cover Assy - Spark plug	1
66	58314A	Fan Housing	1
67	100882	Screw - Hex hd 1/4-20 x 3/4 in. lg.	1
68	100005	Washer - Plain 1/4 in.	1
69	104002	Screw - Pan hd 10-24 x 1/2 in. lg.	1
70	100003	Washer - Plain #10	1
71	100732	Screw - Hex hd 1/4-20 x 5/8 in. lg.	2
72	100005	Washer - Plain 1/4 in.	2
73	62258	Shroud and Deflector Assy	1
74	102388	Screw - Hex hd 10-24 x 5/8 in. lg.	2
75	101194	Lockwasher - #10	2
76	58718	Clamp Assy - Muffler	2
77	58610	Spacer - Muffler support	2
78	58557A	Muffler Assy	1
79	104895	Screw - Socket hd 10-24 x 5/8 in. lg.	2
80	103174	Lockwasher - #10	2
81	58433A	Header - Exhaust	1
82	58422	Gasket - Exhaust header	1
83	100881	Screw - Hex hd 1/4-20 x 2-1/4 in. lg.	1
84	100153	Lockwasher - 1/4 in.	1
85	100005	Washer - Plain 1/4 in.	1
86	103258	Screw - Hex hd 1/4-20 x 1-1/8 in. lg.	8
87	58589	Pad Assy - Mounting	4
88	58580B	Frame Assy - Mounting	1
89		Powerhead Assy (See Figure 6)	1
90	102121	Screw - Hex hd 1/4-20 x 7/8 in. lg.	2
91	104516	Screw - Hex hd 1/4-20 x 5/8 in. lg.	1
92	100005	Washer - Plain 1/4 in.	2
93	101143	Nut - Hex 1/4-20	2
94	58151	Brace - Fuel Tank	1
95	101982	Screw - Hex hd 1/4-20 x 1 in. lg.	4
96	100153	Lockwasher - 1/4 in.	4
97	100005	Washer - Plain 1/4 in.	4
98	58139A	Cover - Crankcase bottom	1
99	58166A	Gasket - Crankcase bottom cover	1

FIGURE 2. CONTROL ASSEMBLY AND CAPACITOR

Index No.	Part Number	Nomenclature	Units Per Assy
1	102762	Screw - Hex hd 10-24 x 1/2 in lg	4
2	101194	Lockwasher - #10	4
3	58581	Clamp - Capacitor	2
4	58595	Absorber - Shock (short)	8
5	58594A	Capacitor	1
6	110314	. Nut - Hex jam 5/16-18	2
7	110315	. Lockwasher - 5/16 in.	2
8	102762	Screw - Hex hd 10-24 x 1/2 in. lg	2
9	101194	Lockwasher - #10	2
10	100003	Washer - Plain #10	1
11	103750	Screw - Rd hd 8-32 x 7/8 in. lg	1
12	105254	Screw - Fil hd 8-32 x 1-3/4 in. lg. (SEMS)	1
13	100057	Lockwasher - #8	2
14	100080	Washer - Plain #8	1
15	58603	Insulator - Long	2
16	58648B	Control Assy	1
17	100362	. Screw - Fil hd 8-32 x 3/8 in. lg	1

This list is continued on page 7

170 ARC WELDER

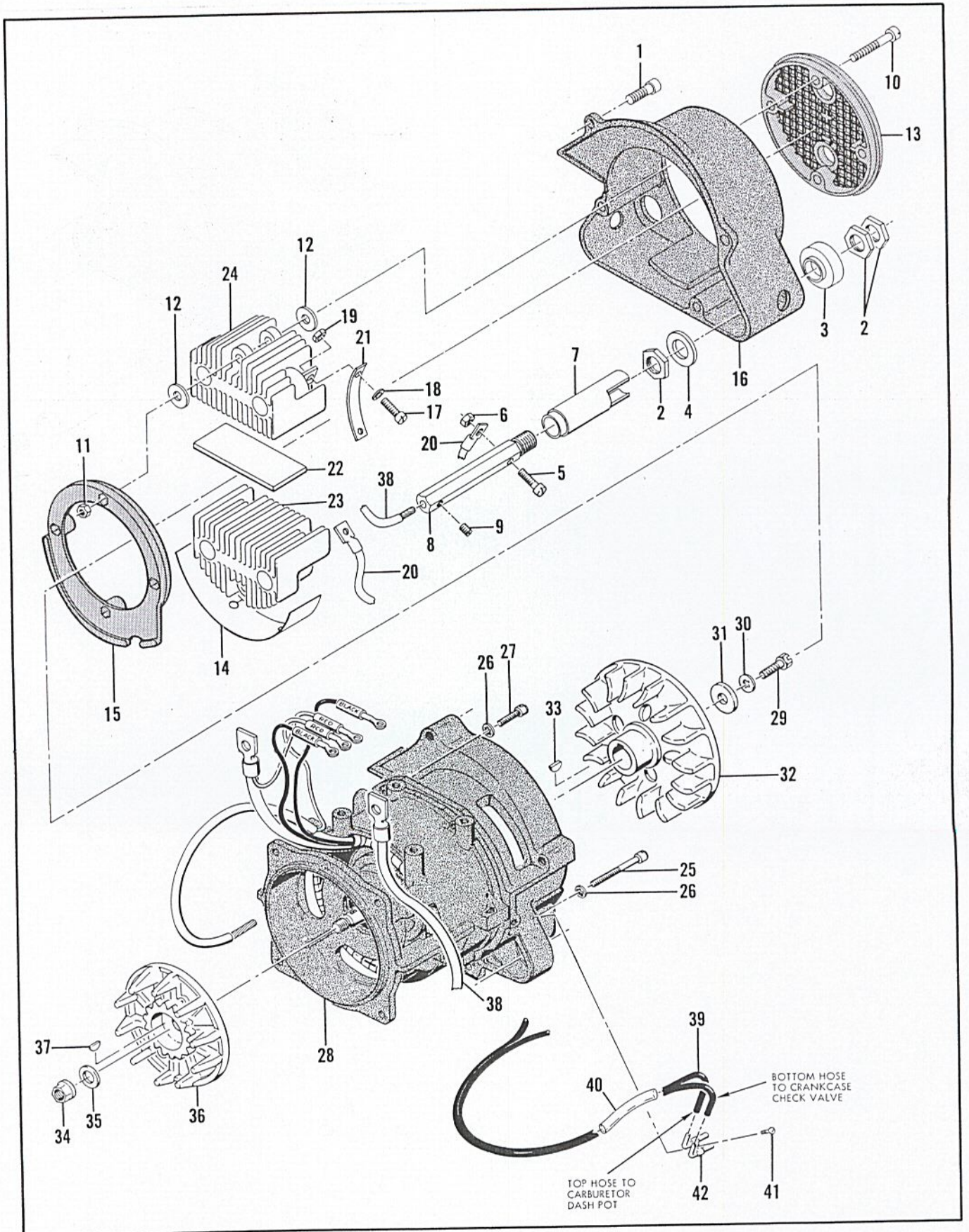


Figure 3. Rectifier and Alternator Assemblies.

FIGURE 2. CONTROL ASSEMBLY AND CAPACITOR (CONT)

Index No.	Part Number	Nomenclature	Units Per Assy
18	100080	Washer - Plain #8	1
19	100955	Nut - Hex 8-32	1
20	104769	Screw - Pan hd 6-32 x 3/8 in. lg.	2
21	103556	Lockwasher - #6	2
22	100955	Nut - Hex 8-32	4
23	100080	Washer - Plain #8	12
24	110011	Screw - 8-32 x 5/8 in. lg. (SEMS)	4
25	110343	Screw - Fil hd 8-32 x 1-1/4 in. lg.	3
26	100080	Washer - Plain #8	9
27	100251	Nut - Hex 8-32	6
28	58735	Absorber - Shock (long)	2
29	100852	Screw - Flat hd 10-24 x 1/2 in. lg.	4
30	58582A	Bracket - Capacitor mounting	2
31	58819	Reflector - Heat	1
32	58929	Cushion - Hood	2

FIGURE 3. RECTIFIER AND ALTERNATOR ASSEMBLIES

Index No.	Part Number	Nomenclature	Units Per Assy
	63697	Rectifier Assy	1
1	105224	Screw - Skt hd 1/4-20 x 1 in. lg.	4
2	58613	Nut - Connector retaining	6
3	58540	Sleeve - Insulator	2
4	58612	Washer - Insulator	2
5	110081	Screw - Fil hd 10-24 x 1 in. lg.	2
6	110082	Nut - Hex 10-24	2
7	62401	Sleeve - Connector	2
8	62398	Connector Assy	2
9	58530	Screw - Set	2
10	102144	Screw - Fil hd 10-24 x 2-1/4 in. lg.	4
11	101191	Nut - Hex 10-24	4
12	62405	Washer - Cushion	4
13	58953	Grill - Rectifier	1
14	62395	Baffle	1
15	58954	Cover - Fan	1
16	62387	Housing - Rectifier	1
17	110416	Screw - Fil hd 10-24 x 3/4 in. lg.	4
18	105446	Washer - Plain #10	4
19	110082	Nut - Hex 10-24	4
20	62396	Cable Assy - Rectifier	2
21	63822	Busbar Assy	2
22	62393	Separator - Heatsink	1
23	62392	Heatsink Assy - Rev. Pol.	1
24	62389	Heatsink Assy - Fwd. Pol.	1
	60412	Alternator Assy - Welder	1
25	102135	Screw - Fil hd 10-24 x 2 in. lg.	3
26	101194	Lockwasher - #10	6
27	102143	Screw - Fil hd 10-24 x 3/4 in. lg.	3
28		Alternator (Order Alternator Assy #60412)	1
29	100882	Screw - Hex hd 1/4-20 x 3/4 in. lg.	1
30	100153	Lockwasher - 1/4 in.	1
31	58689	Washer - Special 1/4 in.	1
32	58815	Fan - Cooling	1
33	103879	Key - Woodruff	1
34	110048	Nut - Hex special lock 3/8-24	1
35	104349	Washer - Plain 3/8 in.	1
36	58773	Coupling - Driven	1

This list is continued on page 9

170 ARC WELDER

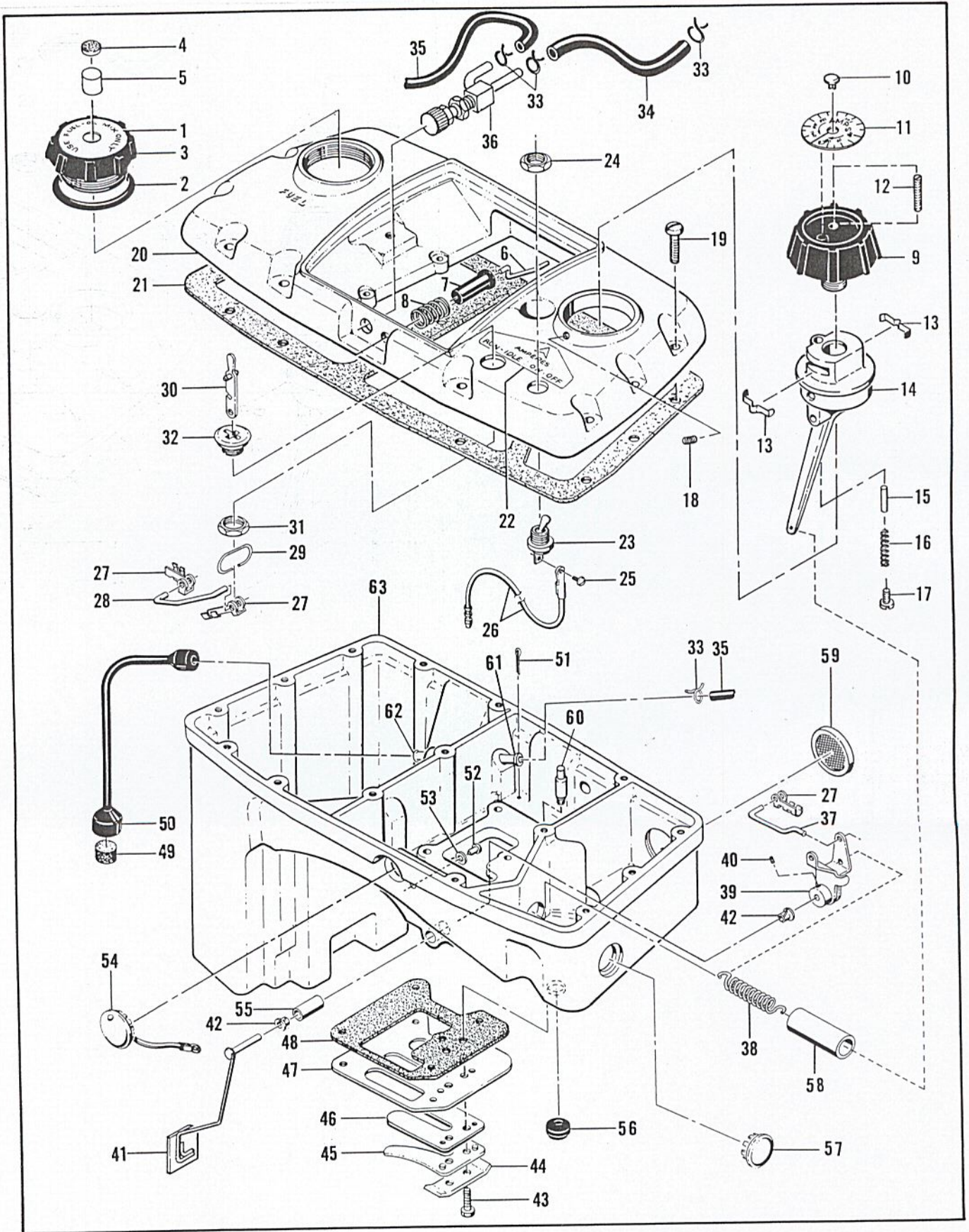


Figure 4. Fuel Tank and Output Control Assemblies

FIGURE 3. RECTIFIER AND ALTERNATOR ASSEMBLIES (CONT)

Index No.	Part Number	Nomenclature	Units Per Assy
37	103879	Key - Woodruff	1
38	58644A	Cable Assy	2
39	60268	Hose - Engine section	1
40	62804	Sleeve	1
41	103928	Screw - 8-32 x 1/2 in. lg.	2
42	60244A	Tube Assy - Idle control	1

FIGURE 4. FUEL TANK AND OUTPUT CONTROL ASSEMBLIES

Index No.	Part Number	Nomenclature	Units Per Assy
1	58712	Decal - Fuel cap	1
2	101348	"O" Ring	1
3	62438	Cap Assy - Fuel	1
4	55063	. Filter - Fuel cap	1
5	62439	. Plug - Felt	1
6	58465	Pushrod - Primer	1
7	59168	Button - Primer	1
8	58415	Spring - Primer button	1
	61098	Control Assy - Output	1
9	61099	. Knob Assy	1
10	110225	. . Button - Plug	1
11	61101	. . Decal	1
12	61116	. . Screw - Special	1
13	61104	. Spring - Detent	2
14	61102	. Adapter and Arm Assy	1
15	100484	. Pin - Stop 1/8 x 5/8 in. lg.	1
16	61105	. Spring - Clamp	1
17	101101	. Screw - Rd hd 8-32 x 1/4 in. lg.	1
18	103724	Screw - Set 10-32 x 3/16 in. lg.	1
19	104397	Screw - Pan hd 10-24 x 7/8 in. lg.	15
20	65455	Cover Assy - Fuel Tank	1
21	58173A	Gasket - Fuel tank cover	1
22	58646	Decal - Controls	1
23	58387	Switch Assy - Ignition	1
24	104810	. Nut - Hex 15/32-32	1
25	103934	. Screw - 6-32 x 1/4 in. lg. (SEMS)	1
26	60774	Wire Assy - Ignition	1
27	59159	Clip - Throttle link	3
28	58658	Rod - Run-Idle control	1
29	58734	Spring - Throttle control lever	1
30	58651A	Lever Assy - Run-Idle switch	1
31	104972	Nut - Hex 9/16-27	1
32	58535	Body - Run-Idle switch	1
33	104857	Clamp - Hose	4
34	62905	Hose - Fuel short	1
35	62906	Hose - Fuel long	1
36	62891	Valve - Fuel Shutoff	1
37	58463	Rod - Throttle control	1
38	62342A	Spring - Governor	1
39	58407A	Lever Assy - Governor	1
40	104154	. Screw - Set 8-32 x 1/4 in. lg.	1
41	62252	Arm Assy - Governor	1
42	104924	Bushing - Governor arm	2
43	104476	Screw - Hex hd 8-32 x 5/16 in. lg.	2
44	51480	Lockplate	1
45	48591	Guard - Reed valve	1
46	48593	Valve - Reed	1

This list is continued on page 11

170 ARC WELDER

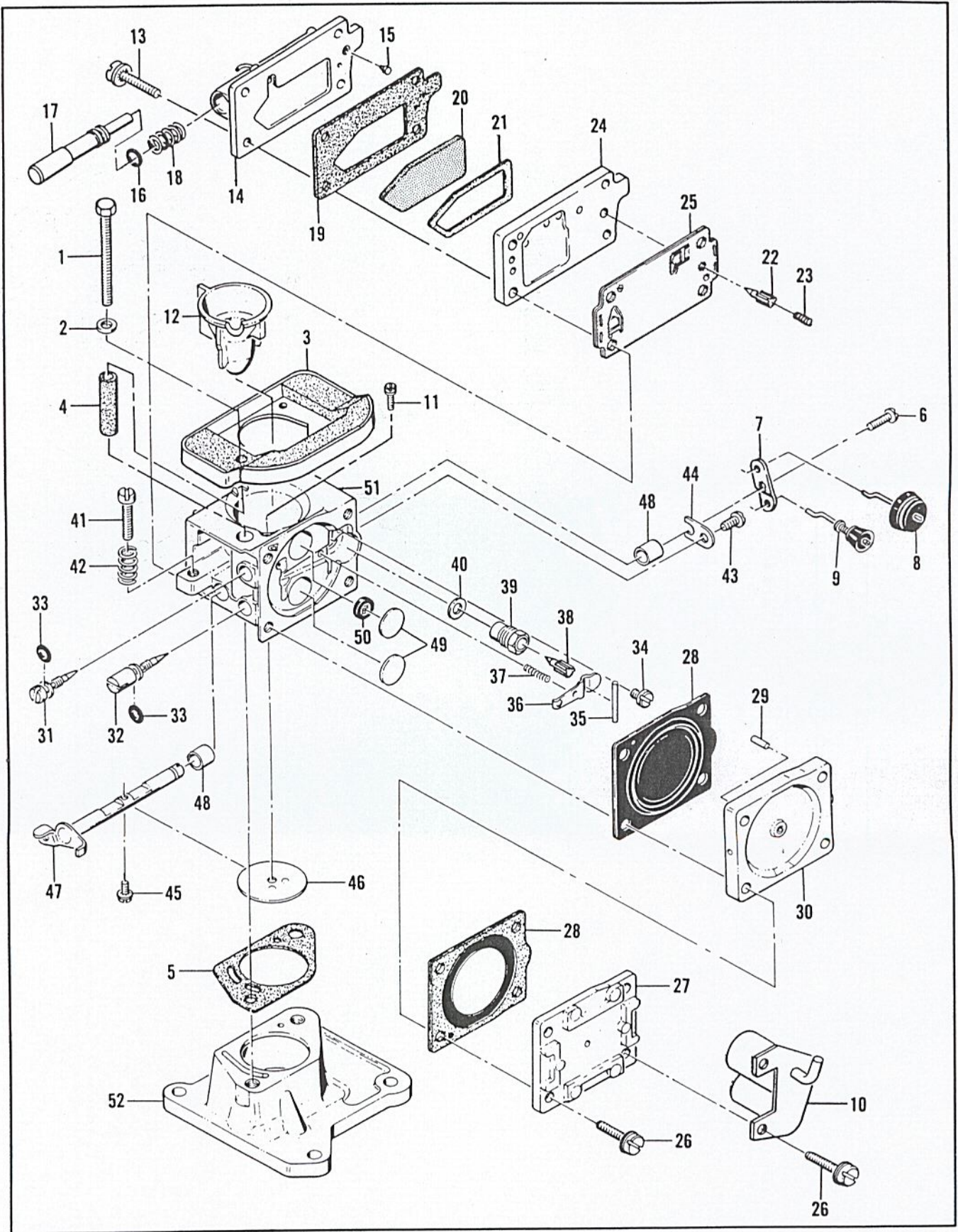


Figure 5. Carburetor, Adapter, and Dash Pot Assembly

FIGURE 4. FUEL TANK AND OUTPUT CONTROL ASSEMBLIES (CONT)

Index No.	Part Number	Nomenclature	Units Per Assy
47	60218	Plate - Reed valve	1
48	58328B	Gasket - Fuel tank	1
	62259A	Fuel Tank Assy	1
49	50124A	. Filter - Fuel	1
50	50082	. Hose - Fuel pickup	1
51	104310	. Cotter Pin	1
52	110006	. Rivet	1
53	101871	. Washer	1
54	51396A	. Cover Assy - Adjustment hole	1
55	62256	. Tube - Governor shaft	1
56	101283	. Grommet	1
57	104956	. Button - Plug	1
58	58649	. Tube - Governor spring housing	1
59	48911	. Filter	1
60	60206	. Housing Assy - Check valve	1
61	58498	. Nipple - Tube	1
62	58766	. Nipple - Tube	1
63		. Fuel Tank (Order Fuel Tank Assy #62259A)	1

FIGURE 5. CARBURETOR, ADAPTER AND DASH POT ASSEMBLY

Index No.	Part Number	Nomenclature	Units Per Assy
1	102765	Screw - Hex hd 10-24 x 1-3/4 in. lg.	2
2	102189	Washer - Plain #10	2
3	58776A	Fuel Collector Assy	1
4	59134B	Tube - Insulating	2
5	58485A	Gasket - Carburetor	1
6	104814	Screw - Pan hd 4-40 x 1/4 in. lg. (SEMS)	1
7	60201	Lever - Dashpot and idle control	1
8	60199A	Plunger Assy - Idle control	1
9	58728B	Plunger Assy - Dashpot	1
10	60198	Cylinder Assy - Idle control	1
	58481F	Carburetor Assy	1
11	104824	. Screw - #4 x 1/4 in. lg. self tapping	1
12	62456	. Diffuser - Carburetor	1
13	110011	. Screw - 8-32 x 11/16 in. lg. (SEMS)	4
14	61872	. Primer Assy	1
15	59997	. . Valve - Check	1
16	59796	. . "O" Ring	1
17	59788A	. . Plunger - Primer	1
18	59934	. . Spring - Primer	1
19	59784A	. Gasket - Primer	1
20	59123	. Filter - Fuel	1
21	59124A	. Gasket - Fuel filter	1
22	63020	. Needle - Valve	1
23	63011	. Spring - Valve needle	1
24	58098A	. Body - Fuel pump	1
25	59120C	. Diaphragm Assy - Fuel pump	1
26	110011	. Screw - 8-32 x 11/16 in. lg. (SEMS)	4
27	59125	. Cover - Diaphragm	1
28	59129	. Diaphragm Assy - Actuator	2
29	59128	. Pin - Actuator	1
30	59425	. Separator Assy	1
31	62145	. Needle - Main fuel adjustment	1
32	59112	. Needle - Idle fuel adjustment	1
33	104001	. "O" Ring	2

This list is continued on page 13

170 ARC WELDER

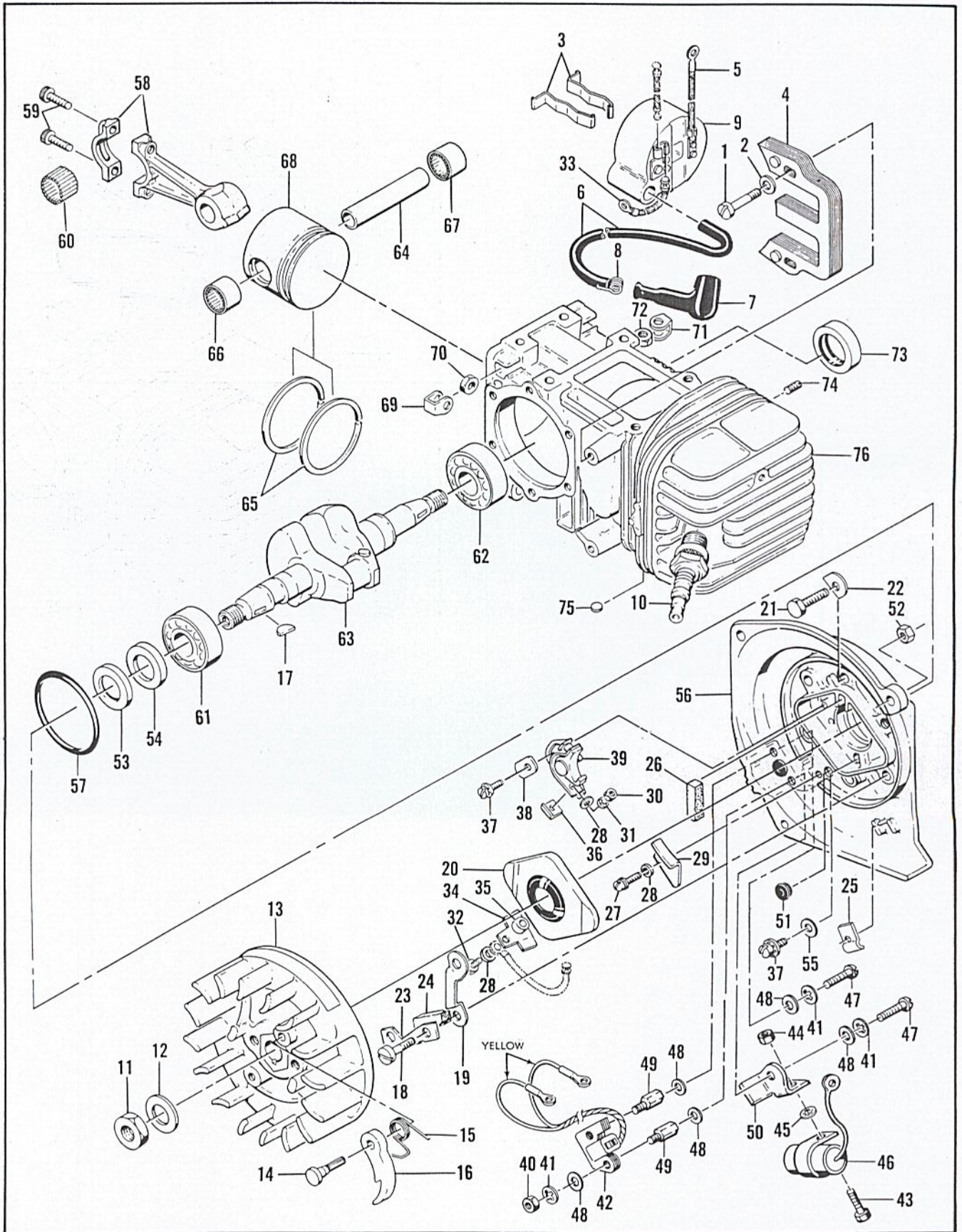


Figure 6. Powerhead Assembly

FIGURE 5. CARBURETOR, ADAPTER AND DASHPOT ASSEMBLY (CONT)

Index No.	Part Number	Nomenclature	Units Per Assy
34	104728	. Screw - Bind hd #6 x 1/4 in. lg.	1
35	104502	. Pin - Inlet lever	1
36	59109	. Lever - Inlet control	1
37	57172	. Spring - Inlet lever	1
38	63038	. Valve - Needle	1
39	59712	. Body - Valve	1
40	55689	. Washer - Valve	1
41	59595	. Screw - Fil hd 8-32 x 3/4 in. lg.	1
42	51705	. Spring - Idle speed regulator	1
43	110054	. Screw - Pan hd 6-32 x 3/8 in. lg.	1
44	55082	. Clip - Throttle shaft	1
45	104814	. Screw - 4-40 x 1/4 in. lg. (SEMS)	1
46	58462	. Plate - Throttle	1
47	58731A	. Shaft Assy - Throttle	1
	62704	. Body Assy - Carburetor	1
48	55062A	. . Bushing - Throttle shaft	2
49	102758	. . Plug - Expansion 1/2 in. dia.	2
50	59105	. . Seal - Capillary 5/16 in. dia.	1
51		. . Body - Carburetor . . (Order Carburetor Body Assy #62704)	1
52	59557A	Adapter - Carburetor	1

FIGURE 6. POWERHEAD ASSEMBLY

Index No.	Part Number	Nomenclature	Units Per Assy
1	104520	Screw - Fil hd 10-24 x 7/8 in. lg.	2
2	100003	Washer - Plain #10	2
3	51253	Retainer - Coil	2
4	51251	Lamination Assy - Coil	1
	58822	Coil and Terminal Assy	1
5	101883	. Wire Assy - Ground	1
6	52547	. Wire Assy - Spark plug	1
7	55060	. . Boot - Spark plug	1
8	55061	. . Connector - Spark plug wire	1
9		. Coil Assy (Order Coil and Terminal Assy #58822)	1
10		Spark Plug - 14 mm	1
11	101179	Nut - Hex 7/16 in.	1
12	101270	Washer - Special	1
13	58274B	Flywheel & Pawl Assy	1
14	36144B	. Pin - Starter pawl	2
15	50582	. Spring - Starter pawl	2
16	24093	. Pawl - Starter	2
17	103879	Key - Woodruff	1
18	102763	Screw - Hex hd 10-24 x 3/4 in. lg.	4
19	55977	Clip - Breaker box cover	2
20	55766B	Cover Assy - Breaker box	1
21	102763	Screw - Hex hd 10-24 x 3/4 in. lg.	2
22	36388	Lockplate	1
23	57815	Strap - Seal	1
24	50664	Seal - Breaker box drain	1
25	104230	Speednut	1
26	54184	Wiper - Felt	1
27	110055	Screw - 8-32 x 3/8 in. lg.	1
28	100080	Washer - Plain #8	3
29	57829	Clamp - Ignition wire	1
30	104551	Nut - Hex 8-32	1
31	104553	Lockwasher - #8	1
32	110338	Screw - Hex hd 8-32 x 1/2 in. lg.	1

This list is continued on page 14

FIGURE 6. POWERHEAD ASSEMBLY (CONT)

Index No.	Part Number	Nomenclature	Units Per Assy
33	57766	Wire Assy - Primary	1
34	55782A	Insulator - Wire Assy	1
35	57769	Insulator - Ignition screw	1
36	57770A	Insulator - Breaker spring	1
37	104733	Screw - 8-32 x 1/2 in. lg. (SEMS)	2
38	57767A	Lockplate	1
39	57765B	Breaker Assy	1
40	104551	Nut - Hex 8-32	2
41	104553	Lockwasher - #8	4
42	58661A	Coil Assy - Exciter	1
43	104476	Screw - Hex hd 8-32 x 5/16 in. lg.	1
44	100955	Nut - Hex 8-32	1
45	100057	Lockwasher #8	1
46	50074	Condenser	1
47	100690	Screw - Rd hd 8-32 x 1/2 in. lg.	2
48	100080	Washer - Plain #8	6
49	62081	Stud - Exciter coil	2
50	62152	Bracket - Condenser	1
51	58665	Grommet - Special	1
	60947A	Cover Assy - Crankcase	1
52	101326	. Nut - Hex 10-24	3
53	57897	. Seal - Oil	1
54	57898	. Seal - Oil	1
55	55778E	. Washer - Breaker retainer	1
56		. Cover - Crankcase (Order Crankcase Cover Assy 60947A)	1
57	104523	"O" Ring	1
58	47903	Connecting Rod Assy	1
59	60210A	. Screw - Socket hd 10-32 x 9/16 in. lg.	2
60	102742	. Roller - Needle	24
61	110311	Bearing - Ball	1
62	104490	Bearing - Ball	1
63	58128	Crankshaft	1
64	62866	Pin - Piston	1
	62872	Piston Assy	1
65	58699A	. Ring Set - Piston (2 rings)	1
66	62867	. Bearing - Needle	1
67	62868	. Bearing - Needle (closed end)	1
68		. Piston (Order Piston Assy #62872)	1
	58486A	Cylinder Assy - Crankcase	
69	18556A	. Retainer - Nut	6
70	105394	. Nut - Hex 1/4-20	6
71	28053	. Retainer - Nut	2
72	101326	. Nut - Hex 10-24	2
73	104486	. Seal - Oil	1
74	110034	. Insert - Taplok	2
75	110340	. Plug - Expansion 1/2 in.	3
76		. Cylinder - Crankcase (Order Crankcase Cylinder Assy #58486A)	1

WELD
IDLE CONTROL, CABLE ASSEMBLIES AND ACCESSORIES

Index No.	Part Number	Nomenclature	Units Per Assy
	60778B	Valve Assy - Idle control	1
	60762A	. Plunger - Control valve	1
	60763A	. Body - Control valve	1
	103198	. "O" Ring	2
	60764	. Button - Valve plunger	1
	106022	. Screw - Rd hd 6-20 x 3/8 in. lg	4
	100295	. Lockwasher - #6	4
	100153	. Lockwasher - Internal	1
	60219A	. Clip - Valve attaching	1
	60269	Tube - Idle control cable section	1
	58435	Cable Assy - Ground	1
	58436	Cable Assy - Electrode	1
	110064	Connector - Tweco male	2
	110085	Cover - Tweco connector	2
	58707	Cable Extension - 12 ft	1
	58629	Portakit - Welder	1
	58444	Helmet - Welding	1
	36248	Wrench - Spark plug	1
	64513	Manual - Instruction	1
	62238	Short Block Assy - Welder	1
	62873	Piston Assy - 0.010 in. oversize	1
	58831	. Ring Set - Piston 0.010 in oversize	1
	62888	Piston Assy - 0.020 in. oversize	1
	47825	. Ring Set - Piston 0.020 in. oversize	1
	62889	Piston Assy - 0.030 in. oversize	1
	47826	. Ring Set - Piston 0.030 in. oversize	1
	60226	Hose - Dual tube 450 ft	1