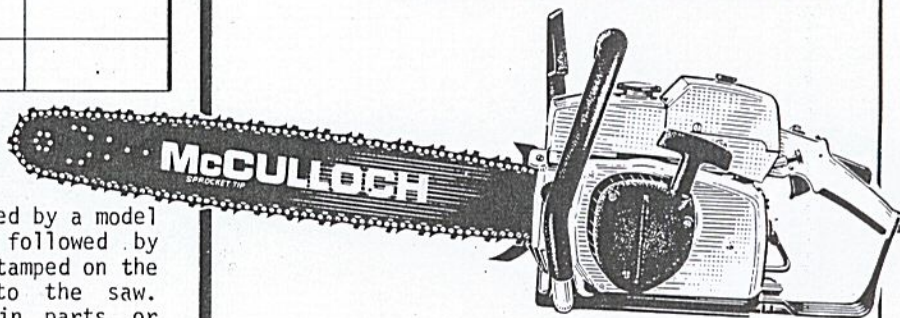


# ILLUSTRATED PARTS LIST

MODELS	SERIAL NUMBER PREFIX	MODELS	SERIAL NUMBER PREFIX
600072A	11-	600072F	11-
600072B	11-	600072J	11-
600072D	11-		
600072E	11-		

## PRO MAC 800 CHAIN SAW



McCulloch chain saws are identified by a model number (in this instance, 600072) followed by a suffix letter (A, B, C, etc.) stamped on the identification plate attached to the saw. Suffix letters denote variations in parts or assemblies in the manufacture of the saw.

Part numbers listed in this IPL which have a suffix letter or letters following the description, indicate the part is used only on the model(s) identified by the letter or letters.

Part numbers and descriptions without suffix letter or letters apply to all versions of the chain saw model.

Part numbers which have one or more dots (.) preceding their descriptions may be ordered individually, but they are also included in the kit or assembly whose description begins directly above the dot(s).

Part numbers in this IPL which were not in the previous IPL covering these saws, are indicated by a dash (-) preceding the new part number.

The policy of McCulloch Corporation is one of continual improvement in design, manufacturing and engineering advancement wherever possible to assure still finer two-cycle power tools. Hence, specifications, equipment, colors, design and manufacturer's suggested list prices are subject to change without notice and McCulloch Corporation reserves the right to make such changes without prior notification or obligation to backfit or supply backfit components for units previously shipped from the factory.

July 1980

- CONTENTS -

	Page
Figure 1. General .....	2
Figure 2. CHAIN BRAKE .....	4
Figure 3. Fan Housing & Starter Asys .....	5
Figure 4. Fuel Tank Assembly .....	6
Figure 5. Carburetor Assembly .....	7
Figure 6. Powerhead & Oiler Assemblies ..	8
Accessories .....	5
Service Specifications .....	5



# Pro Mac 800

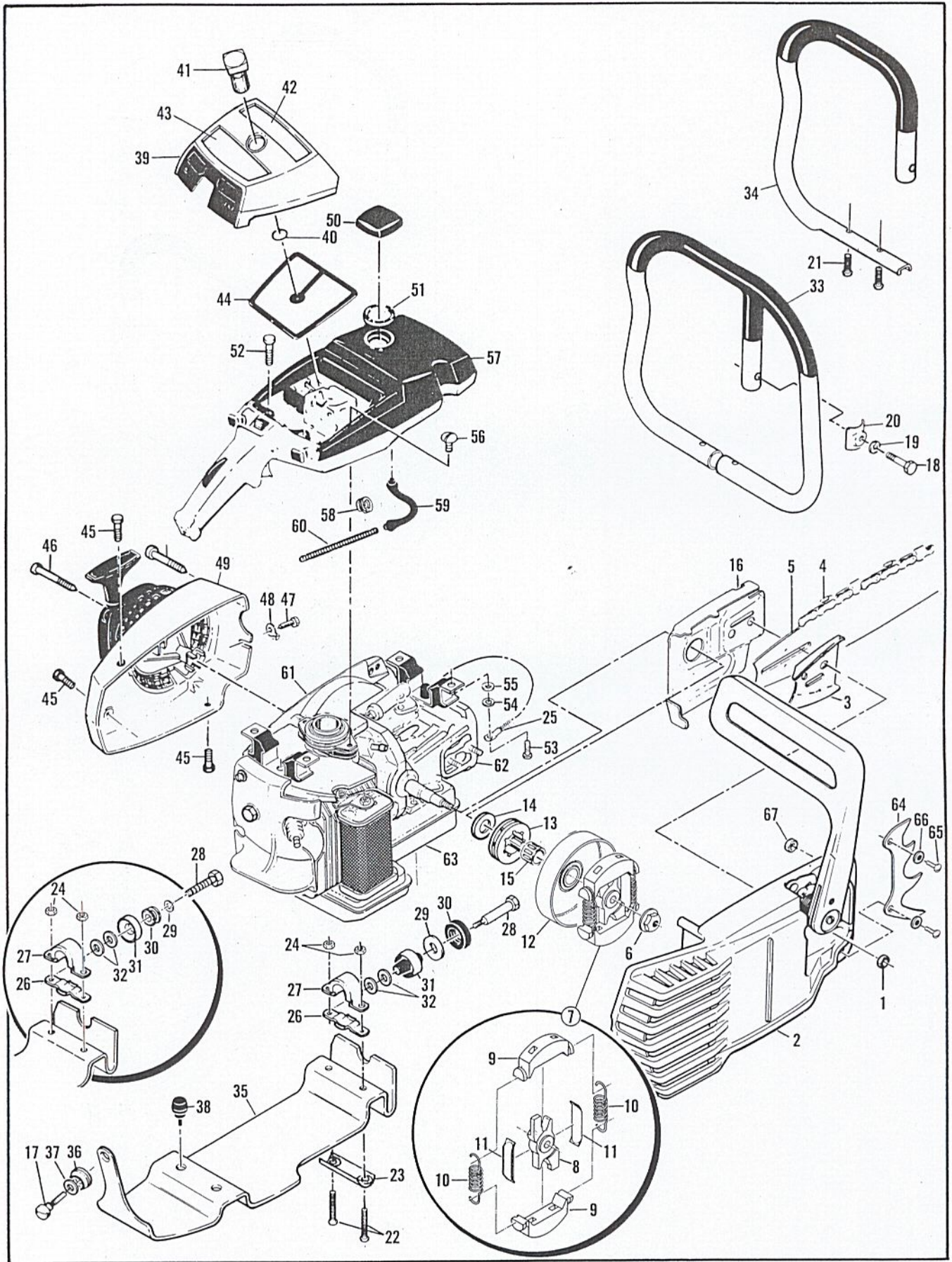


Figure 1. General.

Figure 1. General.

ITEM NO.	PART NUMBER	DESCRIPTION	UNITS PER ASY.	ITEM NO.	PART NUMBER	DESCRIPTION	UNITS PER ASY.
1	120030	Nut - Hx flange	2	32	95636	Washer - 1/4	2
2		CHAIN BRAKE (Figure 2)		33	95514	Frame & Grip Assembly	1
3	64325	Plate - Bar protector	1	34	214103	Frame & Grip Assembly	1
4		Chain Assembly	1	35	95483	Brace - Frame	1
5		Bar Assembly	1	36	93032	Grommet - Frame brace	1
6	86113	Nut - Hx 3/8-24 (L.H.)	1	37	214764	Washer	1
7	214301	Clutch Assembly	1	38	89403	Bumper - Lower	2
8	214300	. Rotor - Clutch	1	39	95418	Cover Assembly - Air cleaner	1
9	67233	. Kit - Clutch shoe	1	40	110565	. Ring - Retaining	1
10	83223	. Spring - Clutch	2	41	95420	. Knob - Cover	1
11	64583	. Retainer - Clutch spring	2	42	95485	Nameplate	1
12	95166	Kit - Drum & Sprocket 7 T .375P	1	43	95486	Instruction Plate	1
13	86145	. Sprocket	1	44	214087	Filter - Air	1
14	86958	. Washer - Sprocket	1	45	110741	Screw - Pan hd 10-24 x 1/2	3
15	110971	Bearing - Sprocket	1	46	87871	Screw - Special	3
16	84978A	Shield - Sawdust	1	47	102762	Screw - Hx hd 10-24 x 1/2	1
17	93037	Screw - Frame brace	1	48	69890	Lockplate	1
18	102130	Screw - Hx 1/4-20 x 1-1/2	1	49		Fan Housing & Starter Assemblies (Figure 3)	
19	100153	Lockwasher - 1/4	1	50	95299	Cap Assembly - Fuel	1
20	63484	Clamp - Frame	1	51	69767	. Gasket	1
21*	104395	Screw - Pan hd 10-24 x 5/8	2	52	110746	Screw - Hx hd 10-24 x 1/2	2
22**	103353	Screw - Hx hd 10-24 x 1-1/2	2	53	102861	Screw - Hx hd 1/4-20 x 5/8	2
23**	95679	Clamp - Frame	1	54	100153	Lockwasher - 1/4	2
24	101191	Nut - Hx Lock 10-24 x 5/8	2	55	100005	Washer - 1/4	2
25	83828A	Wire Assembly - Ground	1	56	110807	Screw - Pan hd 8-32 x 5/16	2
26	92701	Clamp - Bottom	1	57		Fuel Tank Assembly (Figure 4)	
27	92700	① Clamp - Top	1	58	87826	Clamp - Hose	2
27	93932	② Clamp - Top	1	59	69598	Line - Pulse	1
28	93096	① Screw - Shoulder	1	60	67944	Spring - Hose	1
28	110679	② Screw - Hx hd 1/4-20 x 2	1	61		Flywheel & Ignition System (Figure 6)	
29	110845	Washer - Plain	1	62		Powerhead & Oiler Assemblies (Figure 6)	
30	92703	① Hub - Mount	1	63		Muffler Assembly (Figure 6)	
30	84661	② Grommet	1	64	93668	Spike	1
31	92704	① Mount	1	65	102388	Screw - Hx 10-24 x .625	2
31	85898	② Mount	1	66	24236	Washer - Special 10	2
				67	101191	Nut - Hx Lock 10-24	2

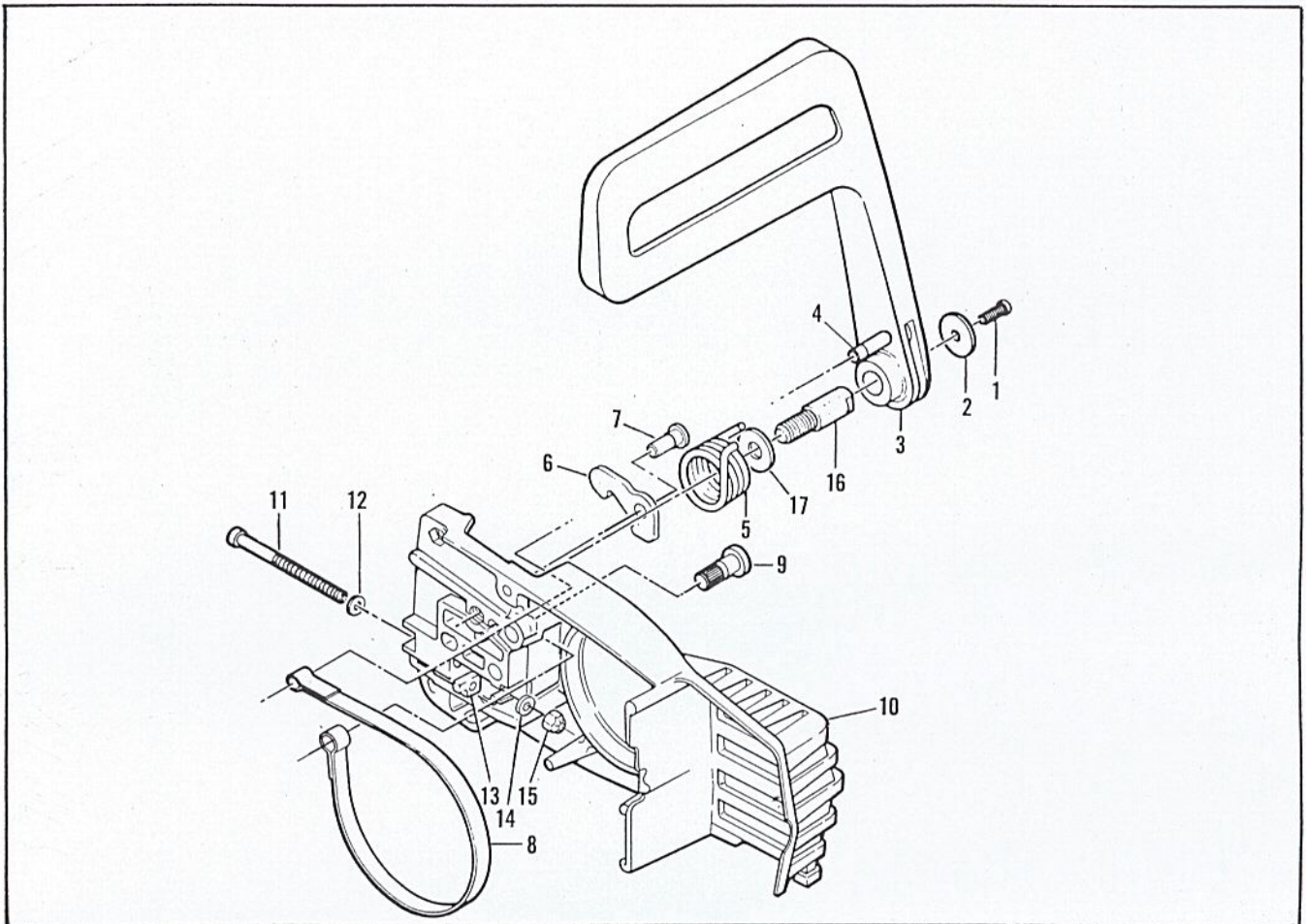
\*Used with Frame and Grip Assembly, Part Number 95514.

\*\*Used with Frame and Grip Assembly, Part Number 214103.

① Used on models with serial number prefix 11- with suffix letter J.

② Used on models with serial number prefix 11- with suffix letter A, B, D, E and F.

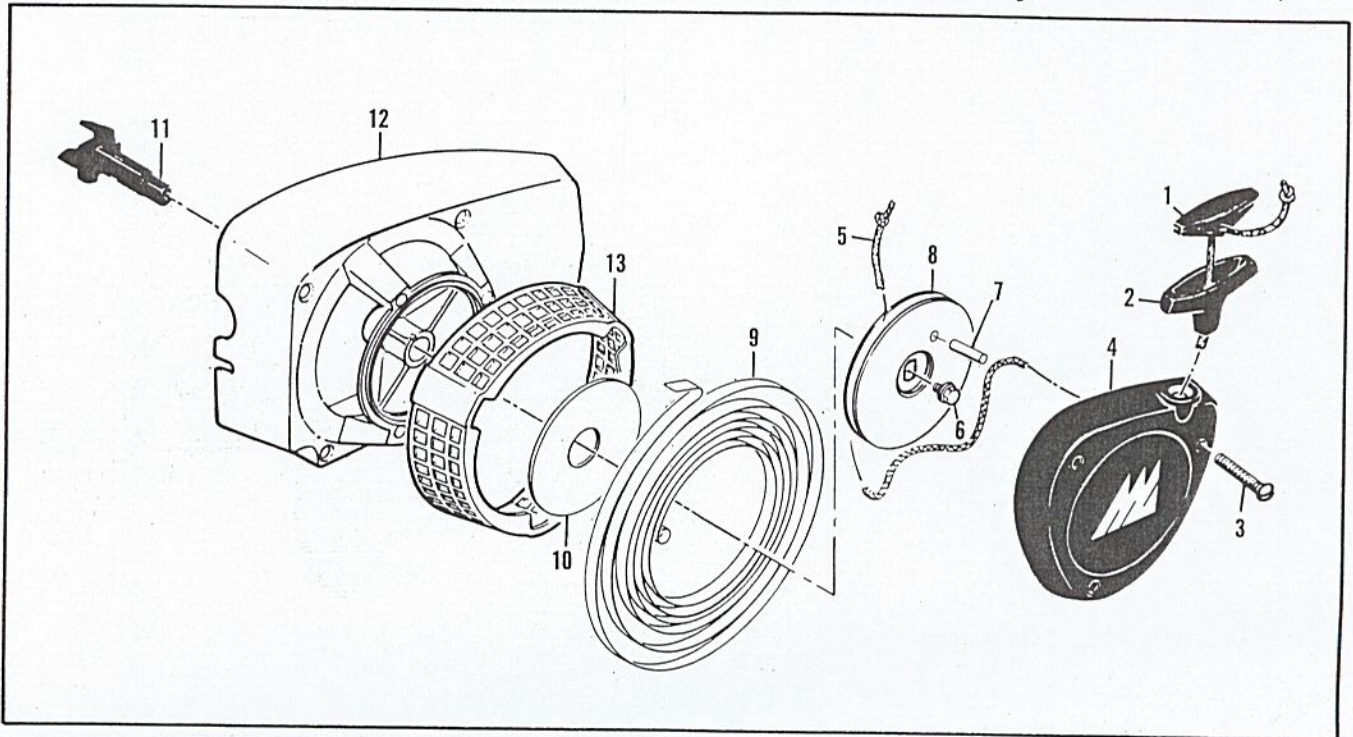
## Figure 2. CHAIN BRAKE Assembly.



ITEM NO.	PART NUMBER	DESCRIPTION	UNITS PER ASY.
	214372	CHAIN BRAKE Assembly	
1	102500	. Screw - Pan hd 10-24 x 1/2	1
2	91273	. Washer - Special	1
3	214365	. Lever Assembly	1
4	214366	. . Pin Assembly - Roller	1
5	93085	. Spring - Brake	1
6	93083	. Latch	1
7	93669	. Pivot - Latch	1
8	93081	. Band - Brake	1

ITEM NO.	PART NUMBER	DESCRIPTION	UNITS PER ASY.
9	93082	. Pin - Band Anchor	1
10	214749	. Housing Assembly - Brake	1
11	110527	. . Screw - Fil hd 10-24 x 2-3/4	1
12	110264	. . Washer - #10	1
13	61705	. . Nut - Bar adjusting	1
14	100002	. . Washer - #10	1
15	102067	. . Nut - Hx 10-24	1
16	91246	. . Pin - Lever pivot	1
17	91245	. . Washer - Thrust	1

**Figure 3. Fan Housing & Starter Assembly.**



ITEM NO.	PART NUMBER	DESCRIPTION	UNITS PER ASY.
	214707	Fan Housing & Starter Assembly	1
1	214699	. Insert - Starter	1
2	93137	. Handle - Starter	1
3	110646	. Screw - Oval hd 8-32 x 1-1/8	3
4	91084	. Cover Assembly - Starter	1
5	87670	. Rope - Starter	1
6	110341	. Screw - Hex hd 10-24 x 1/2	1

ITEM NO.	PART NUMBER	DESCRIPTION	UNITS PER ASY.
7	105841	. Pin - Roll	1
8	87689	. Drum - Starter	1
9	87680	. Spring - Rewind	1
10	86053	. Shield - Spring	1
11	95412	. Shaft - Starter	1
12	214706	. Kit - Fan housing	1
13	214192	. . Guard - Sawdust	1

### Accessories

PART NUMBER	DESCRIPTION
94962	Srench
84453	Kit - Pressure test adaptor
63097	Spark Plug (standard)
63432	Spark Plug (cooler)
62827	Wrench/Screw Driver

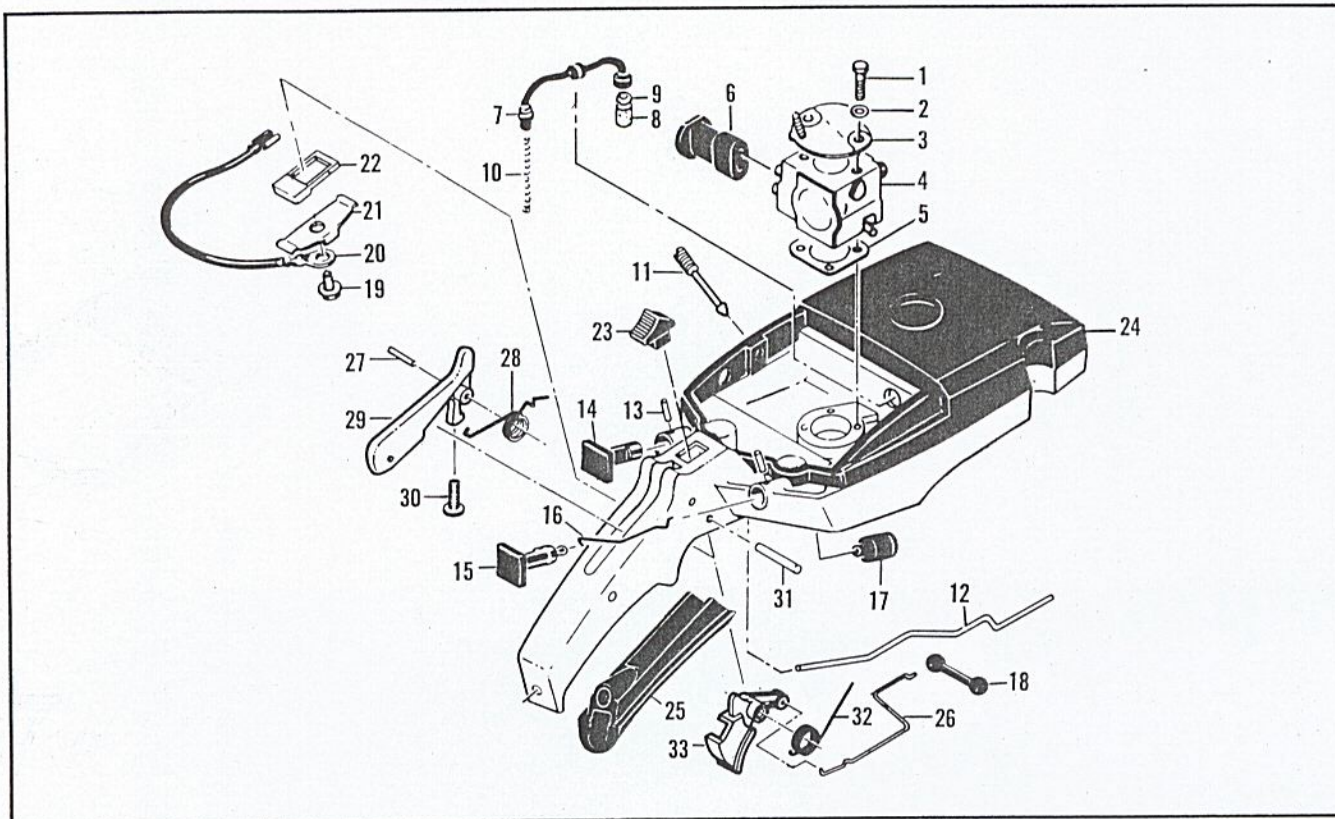
PART NUMBER	DESCRIPTION
93886	Kit - Mount
68090	Metal Lubri-Gun
94938	Plastic Lube Gun

Used on models with long bars (28" and longer).

### Service Specifications

Spark Plug Gap	.025 inch (.63mm)
Clutch Engagement Speed	2800 to 3000 rpm
Lamination Gap	.011 to .015 inch (.30 to .40mm)
Torques	Connecting Rod Screws: 65 to 70 inch x lbs. (7.3 to 7.9N.m)
	Clutch Nut: 200 to 210 inch x lbs. (22.6 to 23.7 N.m)
	Flywheel Nut: 265 to 325 inch x lbs. (29.9 to 36.7N.m)

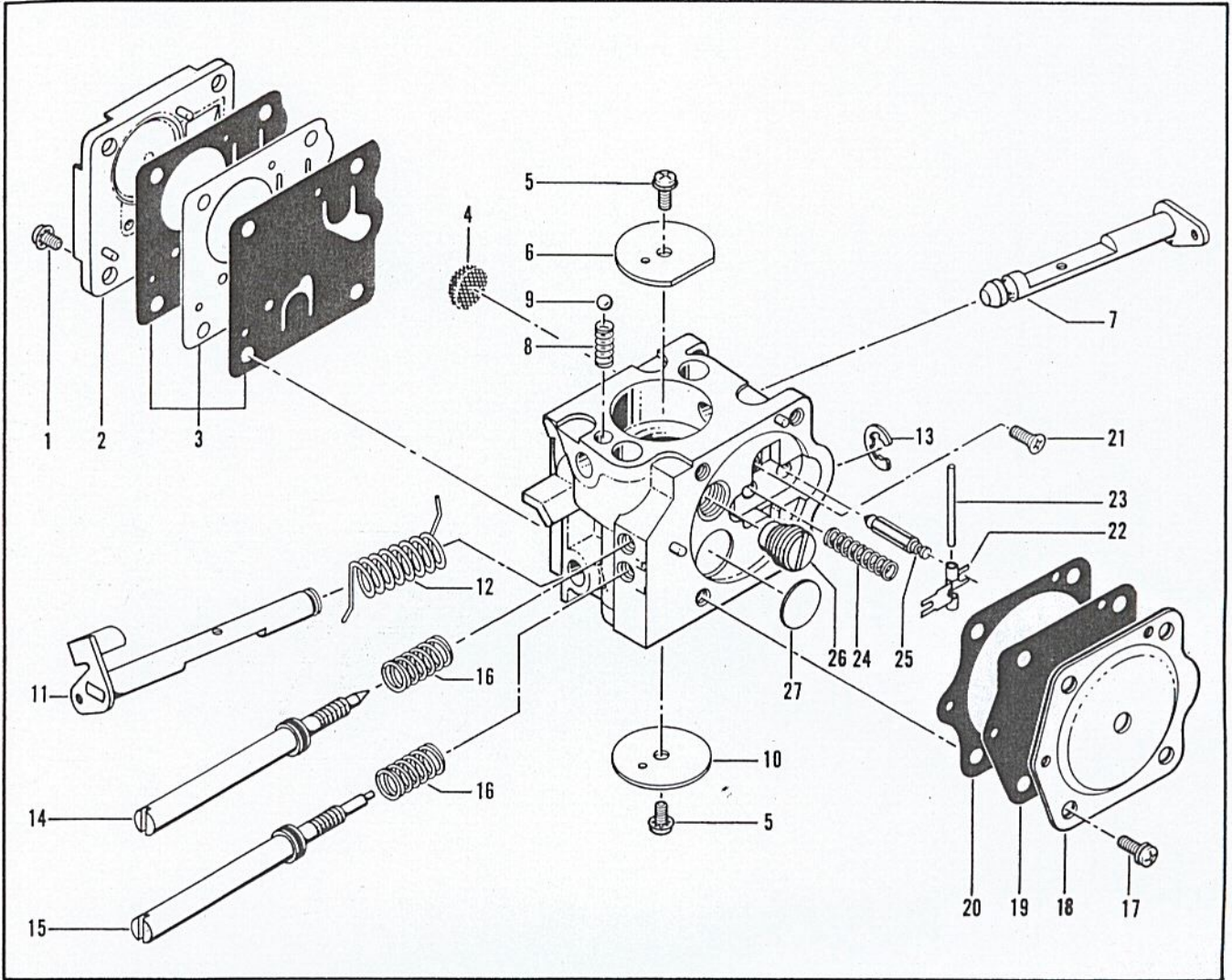
## Figure 4. Fuel Tank Assembly.



ITEM NO.	PART NUMBER	DESCRIPTION	UNITS PER ASY.
1	103357	Screw - Hx hd 10-24 x 2-1/8	2
2	110964	Washer	2
3	95414	Bracket - Air cleaner	1
4		Carburetor Assembly (Figure 5)	
5	86189	Gasket - Carburetor	1
6	85901	Boot - Carburetor controls	1
7	64848	Hose Assembly - Fuel	1
8	63932	. Filter - Fuel	1
9	100440	. Washer	1
10	67944	Spring - Hose	1
11	86273	Screw - Idle speed	1
12	92903	Rod - Oiler	1
13	105673	Pin - Roll 3/32 x 9/16	2
14	95480	Button - Oiler	1
15	95614	Button - Choke	1
16	69631	Rod - Choke	1

ITEM NO.	PART NUMBER	DESCRIPTION	UNITS PER ASY.
17	69597	Boot - Control rod	2
18	69043	Snubber - Rod	1
19	110706	Screw - Fil hd 8-18 x 1/2	1
20	83661	Wire Assembly - Stop switch	1
21	62451	Contact - Switch	1
22	214691	Base - Switch	1
23	68846	Button - Switch	1
24	95493	Tank / Control Assembly	1
25	89320	. Insert - Handle grip	1
26	92155	. Rod - Throttle	1
27	105654	. Pin - Roll 1/8 x 7/8	1
28	92154	. Spring - Trigger release	1
29	94275	. Release Assembly - Trigger	1
30	111012	. . Screw - Pan hd 4-40 x 5/16	1
31	110378	. Pin - Roll 3/16 x 15/16	1
32	92152	. Spring - Trigger	1
33	214679	. Trigger - Throttle	1

Figure 5. Carburetor Assembly.



ITEM NO.	PART NUMBER	DESCRIPTION	UNITS PER ASY.
	213823	Carburetor Assembly (Zama C-3)	1
1	91809	. Screw - Pump cover (M4)*	4
2	93939	. Cover - Fuel pump	1
3	93952 ①	. Kit - Pump diaphragm	1
4	91820 ①	. Screen - Filter	1
5	91804	. Screw - Plate	2
6	93953	. Valve - Choke	1
7	93954	. Shaft Assembly - Choke	1
8	93955	. Spring - Choke shaft	1
9	93956	. Ball - Choke friction	1
10	93937	. Valve - Throttle	1
11	93935	. Shaft Assembly - Throttle	1
12	93936	. Spring - Throttle return	1
13	93938	. "E" Ring	1
14	93946 ①	. Needle - High speed	1

ITEM NO.	PART NUMBER	DESCRIPTION	UNITS PER ASY.
15	93947 ①	. Needle - Idle	1
16	93948 ①	. Spring - Needle	2
17	93945	. Screw - Diaphragm cover	4
18	93944	. Cover - Diaphragm	1
19	93943 ①	. Diaphragm Assembly - Main	1
20	93949 ①	. Gasket - Main	1
21	91814 ①	. Screw - Lever pin (M3)*	1
22	93941 ①	. Lever - Inlet	1
23	93942 ①	. Pin - Lever	1
24	93940 ①	. Spring - Lever	1
25	91810 ①	. Valve - Needle	1
26	93950 ①	. Valve - Assembly - Main jet	1
27	93951	. Plug - Welsh	1
	93957	Repair Kit	

① Contained in Repair Kit, P/N 93957.

\* The "M" denotes metric screw size.

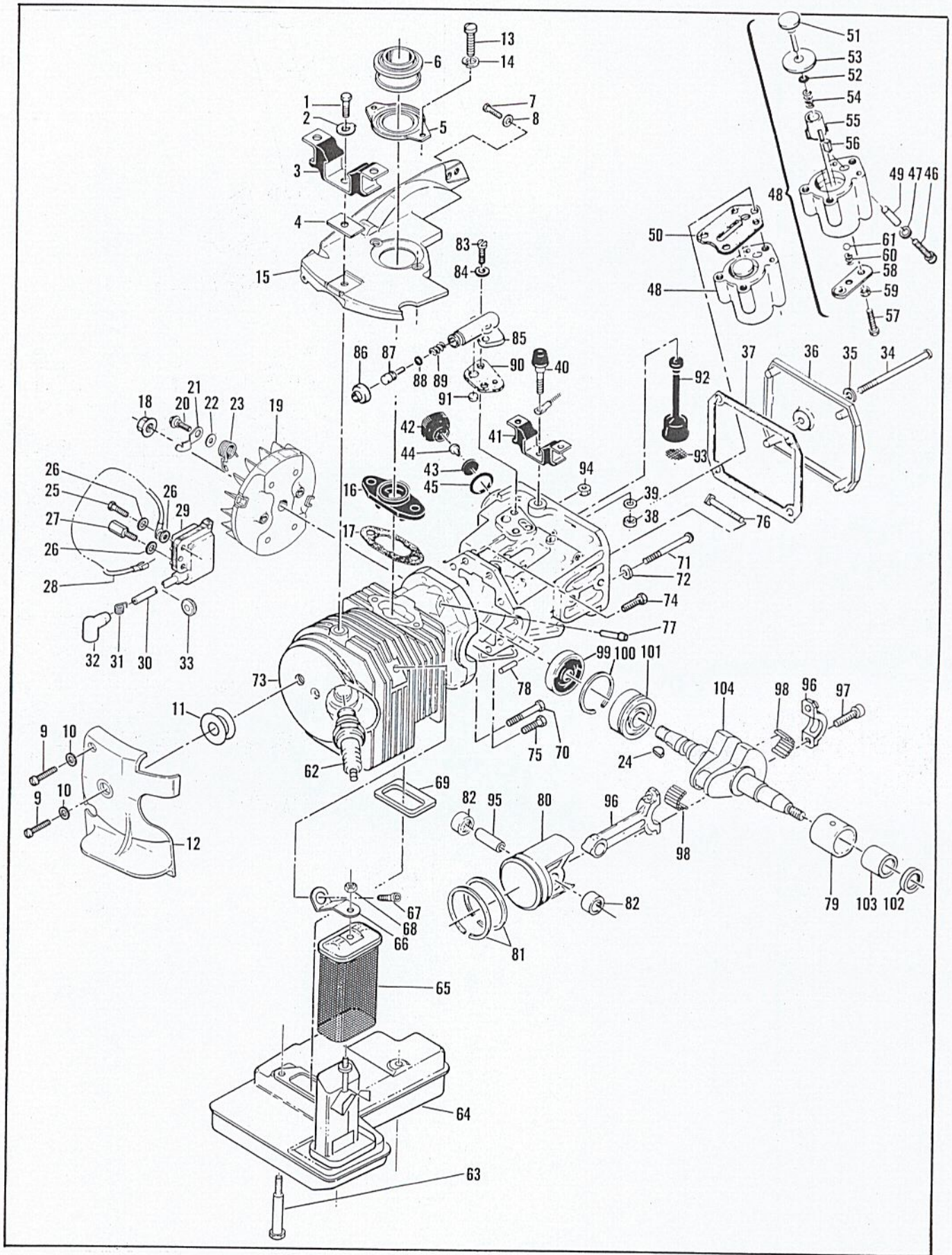


Figure 6. Powerhead & Oiler Assemblies.



Figure 6. Powerhead &amp; Oiler Assemblies.

ITEM NO.	PART NUMBER	DESCRIPTION	UNITS PER ASY.	ITEM NO.	PART NUMBER	DESCRIPTION	UNITS PER ASY.
1	83811	Screw - Special	1	54	60259	. Spring - Piston	1
2	69924	Lockplate	1	55	62227	. Sleeve - Adjustment	1
3	91578A ①	Mount - Rear	1	56	91259	. Pad - Oil pump	1
3	93925 ②	Mount - Rear	1	57	110386	. Screw - Hx hd 8-32 x 1	1
4	84619	Insulator	1	58	89114	. Clamp - Pump	1
5	213381	Clamp Assembly - Boot	1	59	100251	. Nut - Hex 8-32	1
6	213987	Boot - Port	1	60	92844	. Spring - Outlet valve	1
7	110621	Screw - Hex 10-24 x 3/4	1	61	102809	. Ball - Outlet valve	1
8	100057	Lockwasher - #8	1	62	63432	Spark Plug (A, D, F, J)	1
9	102500	Screw - Pan hd 10-24 x 1/2	2	62	93017	Spark Plug (B, E)	1
10	100002	Washer - #10	2	63	95392	Screw - Muffler	3
11	93460	Washer - Insulator	1	64	213783	Muffler Assembly	1
12	95479	Shroud - Rear	1	65	214283	Spark Screen & Cap Assembly	1
13	104396	Screw - Pan hd 10-24 x 3/4	2	66	214631	Strap - Muffler	1
14	101194	Lockwasher - #10	2	67	214100	Screw - Muffler strap	1
15	95477	Shroud - Upper	1	68	101191	Nut - Hex	1
16	87844	Insulator - Inlet	1	69	95387	Gasket - Muffler	1
17	88740	Gasket - Insulator	1	70	110644	Screw - Hx hd 8-32 x 1-1/2	1
18	110703	Nut - Hex 3/8-24	1	71	62106	Screw Assembly - Sealing	4
19	95481	Flywheel Assembly	1	72	62842	Washer - Sealing	4
20	93464	. Screw - Pawl	2	73	214740 ③	Kit - Cylinder, C'case, piston	1
21	93198	. Pawl - Starter	2	74	110288	. Screw - Hx hd 8-32 x 3/4	2
22	93469	. Washer - Pawl	2	75	110963	. Screw - Hx hd 8-32 x 1W	1
23	214102	. Spring - Pawl	2	76	92459	. Bolt - Bar mounting	2
24	100106	Key - Woodruff	1	77	69600	. Nipple - Pulse line	1
25	110127	Screw - Hx hd 10-24 x 7/8 (SEMS)	1	78	110851	. Pin - Dowel	1
26	100002	Washer - #10	3	79*	87152	. Insert - Bearing	1
27	95603	Stud - Special	1	80	92518 ③	Piston Assembly "A"	1
28	85798	Wire Assembly - Ground	1	80	92519 ③	Piston Assembly "B"	1
29	95553	Electronic Ignition Assembly	1	80	92520 ③	Piston Assembly "C"	1
30	95555	. Wire Assembly - Spark Plug	1	81	87854	. . Ring Set - Piston	1
31	102556	. . Connector	1	82	111021	. . Bearing - Needle	2
32	95266	. . Boot	1	83	110338	Screw - Pan hd 8-32 x 1/2	2
33	110995	. Grommet	1	84	110613	Washer - #8	2
34	110291	Screw - Pan hd 10-24 x 2-5/8	1	85	84156	Housing - Pump	1
35	110921	Washer - Sealing	1	86	62262	Cap - Housing	1
36	86304	Cover - Oil tank	1	87	92902	Plunger - Pump	1
37	86306	Gasket - Cover	1	88	105614	"O" Ring	1
38	101143	Nut - Hx 1/4-20	1	89	66687	Spring - Pump	1
39	102523	Washer - 1/4	1	90	91669	Gasket - Pump	1
40	69832	Bumper - Front	1	91	91668	Valve - Pump	1
41	91582A ①	Mount - Front	1	92	91672	Hose - Oil	1
41	93926 ②	Mount - Front	1	93	51506	. Screen - Hose	1
42	95484	Cap - Oil tank	1	94	100955	Nut - Hex 8-32	1
43	87269	. Retainer - Valve	1	95	69020	Pin - Piston	1
44	86402	. Valve	1	96	85237	Connecting Rod Assembly	1
45	101148	"O" Ring	1	97	61627A	. Screw - Special	2
46	110865	Screw - Skt hd 10-24 x 7/8	1	98	85246	. Roller (set of 22)	1
47	100003	Washer - #10	1	99	61618	Seal - Oil	1
48	214181	Pump Assembly - Pulse	1	100	63464	Ring - Snap	1
49	91774	. Sleeve	1	101	63429B	Bearing - Ball	1
50	92874	. Seal - Pulse pump	1	102*	110260	Seal - Oil	1
51	214278	. Piston Assembly - Pump	1	103*	104357	Bearing - Needle	1
52	105603	. "O" Ring	1	104	95476	Crankshaft	1
53	86182	. Ring - Piston	1				

\*These three items are contained in Needle Insert/Bearing Assembly, P/N 87151.

① Used on models with serial number prefix 11- with suffix letter J.

② Used on models with serial number prefix 11- with suffix letter A, B, D, E & F.

③ Cylinder/Crankcase and Piston Assembly Kits are furnished in matched sets and are identified by a matching letter marking "A", "B" or "C" on both cylinder and piston. Order replacement pistons identified with the letter identification on the cylinder. For piston replacement in an unmarked cylinder, use Piston Assembly, P/N 92519, identified "B".