

ILLUSTRATED PARTS LIST

MODELS	SERIAL NUMBER PREFIX	MODELS	SERIAL NUMBER PREFIX
600018B	11-	600018P	11-
600018C	11-	600018U	11-
600018E	11-		
600018K	11-		

McC Model Chain Saws are identified by a model number (000000) followed by a suffix letter (A, B, C, etc.) stamped on the identification plate attached to the saw. Suffix letters denote variations in parts or assemblies in the manufacture of the saw.

Part numbers listed in this IPL which have a suffix letter or letters following the description, indicate the part is used only on the model(s) identified by the letter or letters.

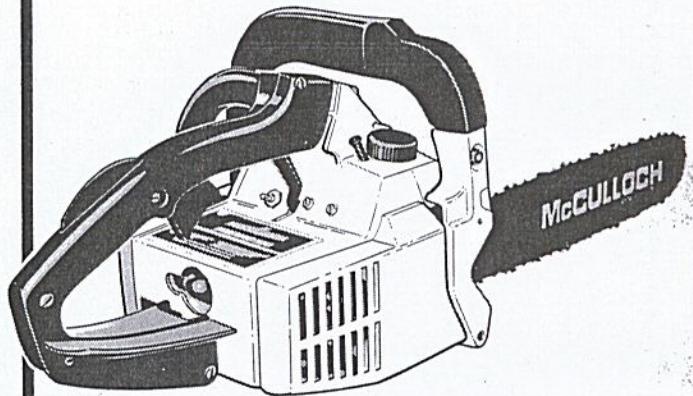
Part numbers and descriptions without suffix letter or letters apply to all models of the Pro Mac 510 chain saw.

Part numbers which have one or more dots (.) preceding their description may be ordered individually but they are also included in the kit or assembly whose description begins directly above the dot(s).

Part numbers which have changed since the previous printing of the IPL covering these saws, are indicated by a dash (-) preceding the new part number.

The policy of McCulloch Corporation is one of continual improvement in design, manufacturing and engineering advancement wherever possible to assure still finer two-cycle power tools. Hence, specifications, equipment, colors, design and manufacturer's suggested list prices are subject to change without notice and McCulloch Corporation reserves the right to make such changes without prior notification or obligation to backfit or supply backfit components for units previously shipped from the factory.

Pro Mac 510 Chain Saw



FEBRUARY 1977

- CONTENTS -

	<u>Page</u>
Figure 1. General	2
Figure 2. CHAIN BRAKE Assembly	4
Figure 3. Handle & Frame Assembly	4
Figure 4. Starter Assembly	6
Figure 5. Powerhead Assembly	8
Figure 6. Carburetor Assembly	10
Bar & Chain Combinations	3
Service Specifications	7
Accessories	11



Pro Mac 510

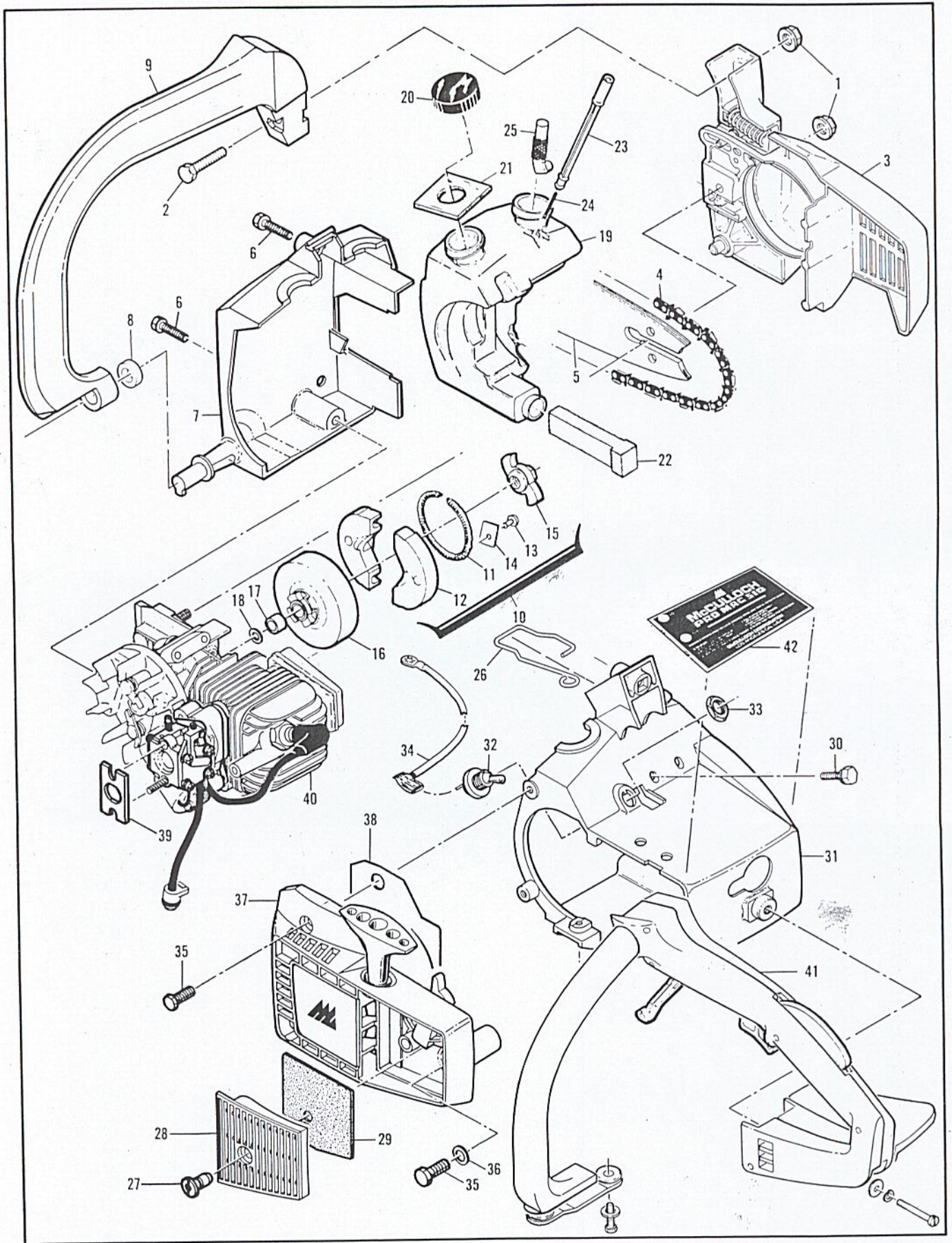


Figure 1. General

Figure 1. General

Item No.	Part Number	Description	Units Per Asy
1	110676	Nut-Hx 1/4-28	2
2	110972	Screw-Hx 1/4-28	1
3		CHAIN BRAKE ASY (Fig 2)	
4		Chain Asy (Below)	
5		Bar (Below)	
6	110639	Screw-Hx hd 12-24x1	2
7	92863	Cover-Fuel & Oil Tank	1
8	93194	Washer-Rubber	1
9	92480	Lever-Handguard	1
10	92743	Clutch-Asy	1
11	93068	. Spring Asy-Clutch	1
12	92668	. Kit-Clutch shoe	2
13	110957	. . Rivet	2
14	85064	. . Plate	2
15	92721	. Rotor	1
16	85504	Drum & Spkt Asy-.250P (B,C,K,P,U)	1
17	67650	Bearing-Spkt (B,C,K,P,U)	1
(16)	90150B	Drum/Spkt/Brng Asy- .375P (E)	1
(17)	91222	. Kit-Needle brng (E)	1
18	67303	Washer-Sprocket (B,C,K,P,U)	1

Item No.	Part Number	Description	Units Per Asy
19	91454A	Tank Kit-Fuel & Oil	1
20	91283	. Cap-Fuel & Oil (unvented)	1
21	91148	. Seal-Fuel vent	1
22	84956	. Pickup-Fuel	1
23	83900A	. Piston-Pulse Oiler	1
24	83946	. Spring-Piston	1
25	85557	. Body-Oiler	1
26	93295	Rod-Oiler	1
27	89070	Nut-Air cleaner cover	1
28	89069	Cover-Air cleaner	1
29	89072	Filter-Air	1
30	110953	Screw-Hx hd 12-24x5/8	3
31	89051A	Shroud	1
32	92649	Kit-Ignition switch	1
33	104810	. Nut-Hx 15/32-32	1
34	69344	Wire Asy-Ignition	1
35	110953	Screw-Hx hd 12-24x5/8	3
36	110882	Washer	1
37		Starter Asy (Fig 4)	
38	93236	Deflector-Air	1
39	89061	Gasket-Starter housing	1
40		Powerhead Asy (Fig 5)	
41		Handle & Frame Asy (Fig 3)	
42	93383	Plate-Name	1

Bar & Chain Combinations

91663	Bar-14" Mini Pro (B,P,U)
92625N	Chain-SM250GL (B,P,U)
91615	Bar-16" Mini Pro (C)
92622N	Chain-SM250GL (C)
90772	Bar-16" Mac 6 (K)
92622N	Chain-SM250GL (K)

Pro Mac 510

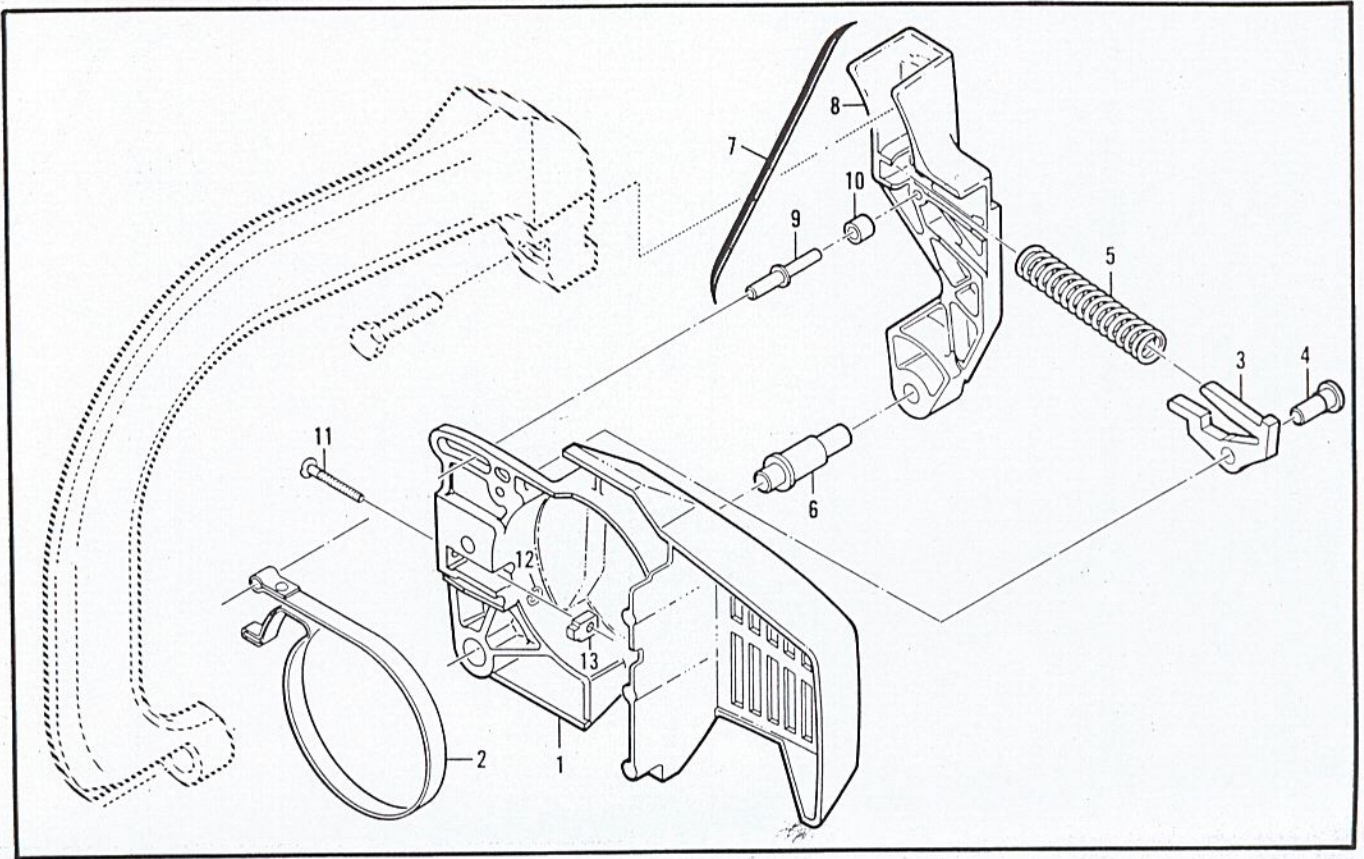


Figure 2. CHAIN BRAKE Assembly

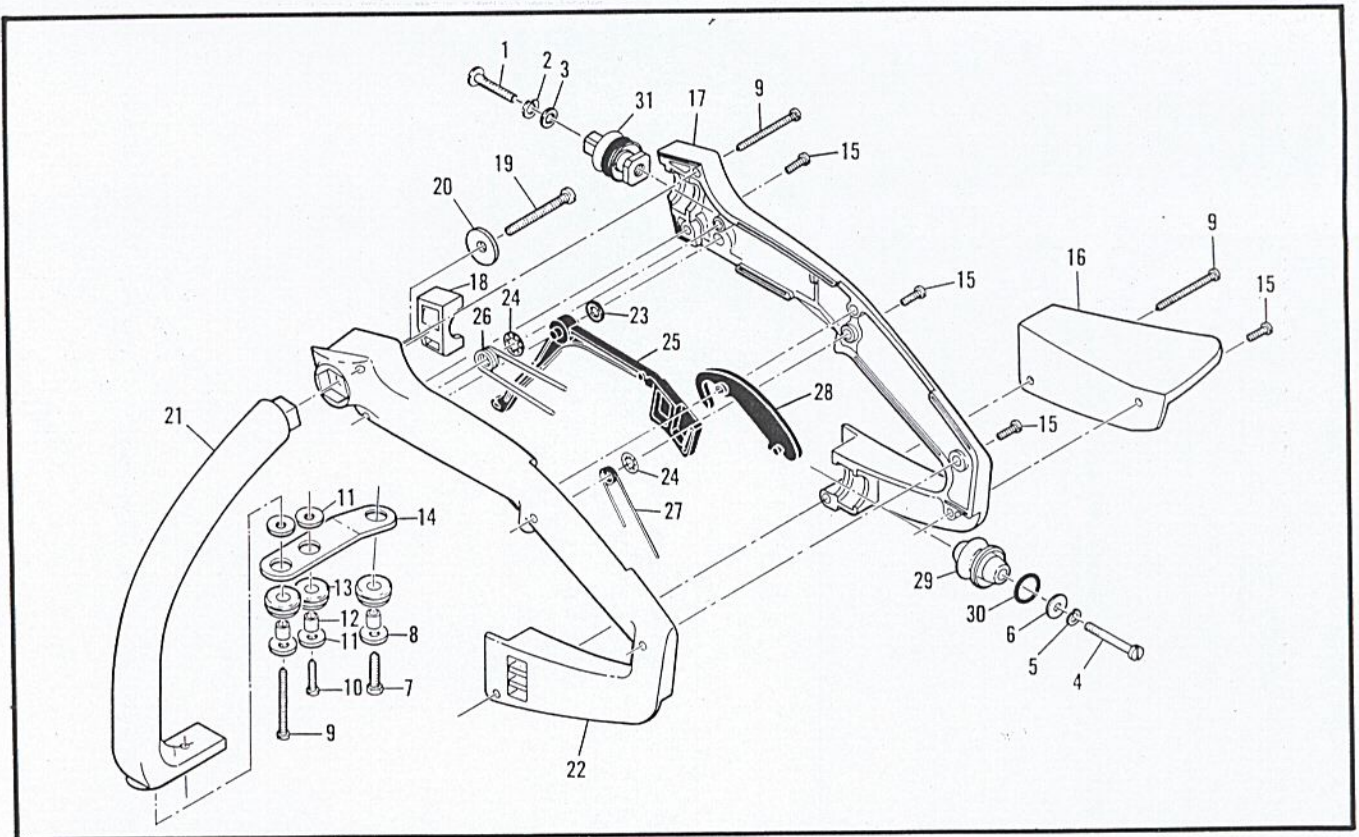


Figure 3. Handle & Frame Assembly

Figure 2. CHAINBRAKE Assembly

Item No.	Part Number	Description	Units Per Asy
	92871	CHAIN BRAKE Asy	
1	92862	. Housing-Brake	1
2	92487	. Band-Brake	1
3	93092	. Latch	1
4	92485	. Pivot-Latch	1
5	93140	. Spring	1
6	92482	. Pivot-Lever	1

Item No.	Part Number	Description	Units Per Asy
7	93467	. Lever Asy-Actuating	1
8	92867	. . Lever	1
9	93139	. . Pin-Roller	1
10	93147	. . Bearing-Roller	1
11	90658	. Screw-Adjusting	1
12	110907	. Ring-Retaining	1
13	84929	. Nut-Bar adj.	1

Figure 3. Handle & Frame Assembly

Item No.	Part Number	Description	Units Per Asy
1	103270	Screw -Filhd 1/4-20 x 1-1/2	1
2	105043	Washer-Spring lock	1
3	100005	Washer	1
4	102208	Screw-Fil hd	1
5	105043	Washer-Spring lock	1
6	110870	Washer	1
	93060	Kit-Handle	
7	110981	. Screw-Hx 12-24 x 13/16	1
8	110882	. Washer	1
9	110977	. Screw-Pn 10-16 x 1	3
10	110998	. Screw-10-16 x 3/4	1
11	110882	. Washer	4
12	93057	. Spacer-Mount	3
13	110989	. Grommet	3
14	93031	. Link Mount	1
15	110978	. Screw-Pn 8-16 x 5/8	4

Item No.	Part Number	Description	Units Per Asy
16	93026	. Guard-Chain	1
17	92986	. Handle-Right hand	1
18	93030	. Insert-Handle	1
19	110976	. Screw-Pn 1/4-14 x 1-3/4	1
20	110870	. Washer	1
21	93033	. Frame	1
22	92985	. Handle-Left hand	1
23	110960	. Washer-Wavey	1
24	110936	. Retainer-Spring	2
25	91162A	Trigger-Throttle	1
26	90606	Spring-Trigger	1
27	90615	Spring-Trigger release	1
28	91504	Release-Trigger	1
29	91171	Mount	1
30	105615	"O" Ring	1
31	91170	Mount	1

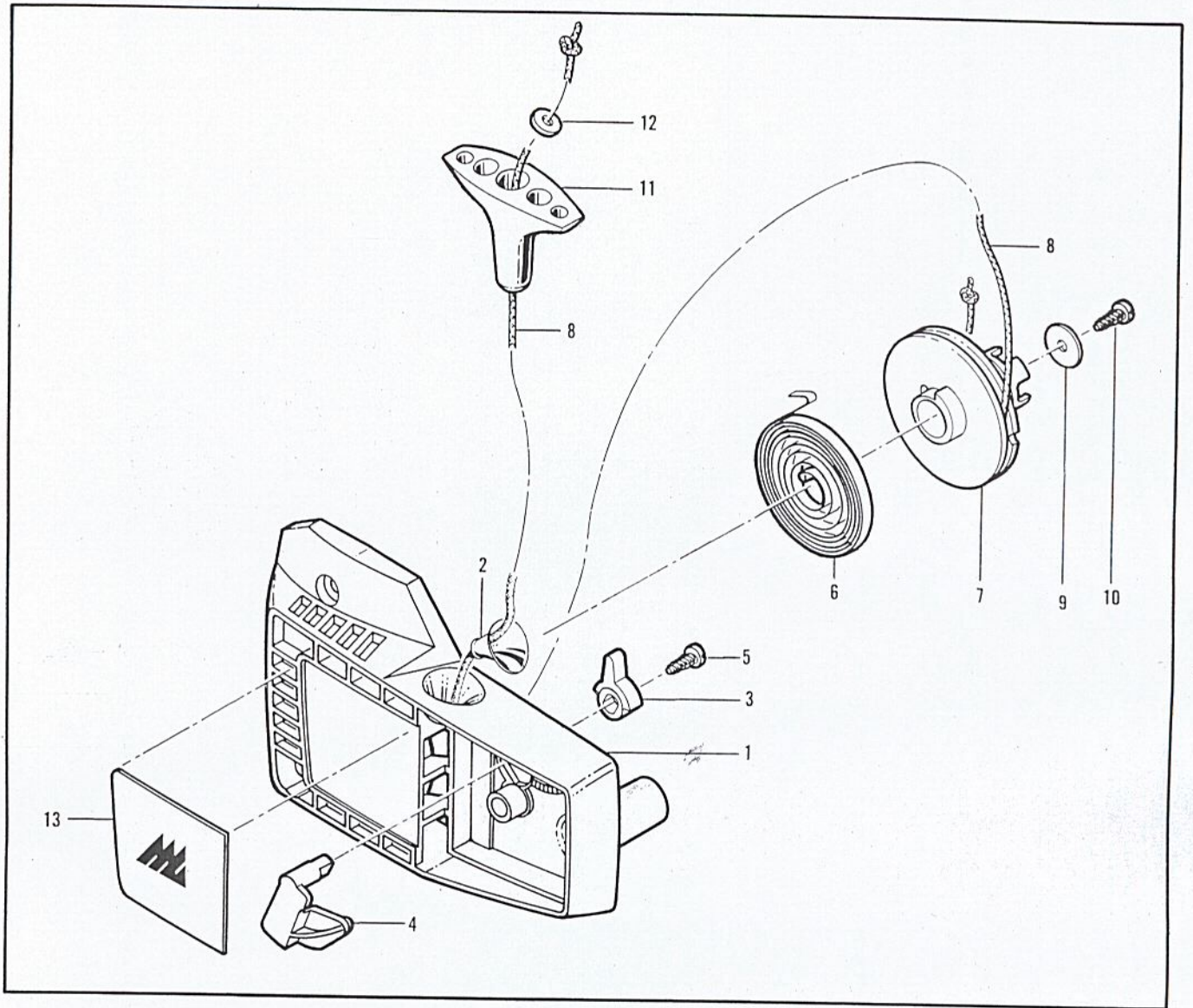


Figure 4. Starter Assembly

Figure 4. Starter Assembly

Item No.	Part Number	Description	Units Per Asy
	93280	Starter Asy	
1	89063A	. Housing-Starter	1
2	67571	. . Guide-Rope	1
3	91182	. Lever-Choke	1
4	91183	. Plate-Choke	1
5	110041	. Screw-Pan hd 8-32 x 1/2	1
6	83078	. Spring-Rewind	1

Item No.	Part Number	Description	Units Per Asy
7	92316	. Drum/Rope Asy	1
8	83203	. . Rope-Starter	1
9	68497	. Washer	1
10	110041	. Screw-Pan hd 8-32 x 1/2	1
11	91255	. Kit-Starter Handle	1
12	105490	. . Washer	1
13	91570	. Plate	1

Service Specifications

Displacement	2.3 cu. in (38cc)
Clutch Engaging Speed	3800-4100 RPM
Breaker Point Gap	.018" (.475 mm)
Timing	26" B.T.D.C.
Spark Plug Gap	.025" (.635 mm)

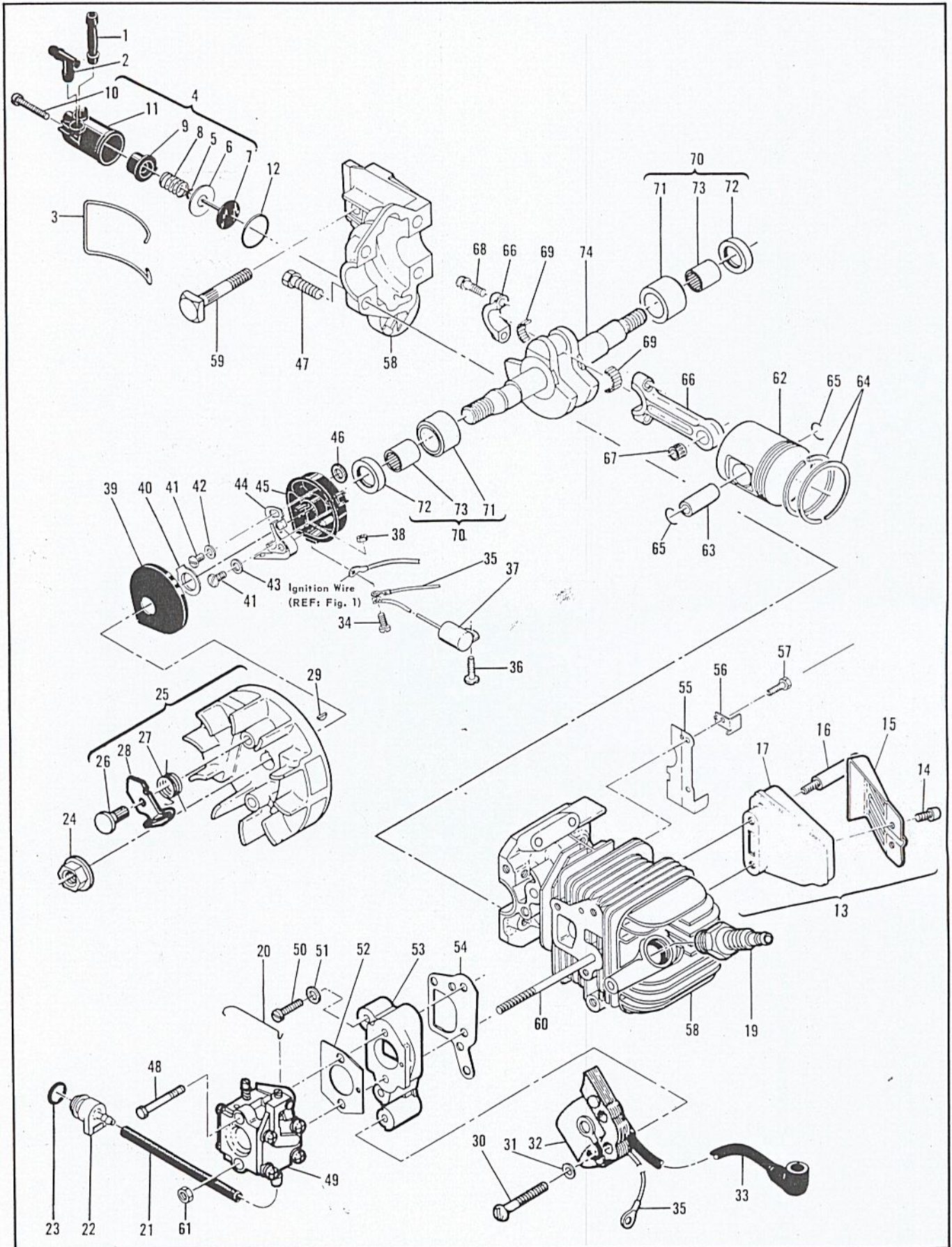


Figure 5. Powerhead Assembly

Figure 5. Powerhead Assembly

Item No.	Part Number	Description	Units Per Asy	Item No.	Part Number	Description	Units Per Asy
1	83898	Connector-Outlet	1	39	67841	Cover-Breaker box	1
2	84613	Connector-Pump	1	40	69323	Seal-Breaker box	1
3	83896	Bail-Mounting	1	41	110969	Screw-Pan hd	2
4	83886	Pump Asy-Pulse	1	42	69322	Washer-Special	1
5	105603	. "O" Ring	1	43	105976	Washer-#8	1
6	85769	. Ring-Pump Piston	1	44	88811	Breaker Asy	1
7	92204	. Piston Asy-Pump	1	45	84505A	Kit-Breaker box	1
8	83891	. Spring-Pump	1	46	92037	. Washer	1
9	83890	. Sleeve-Pump	1	47	110639	Screw-Hx hd 12-24x1	4
10	110651	. Screw-Adjustment	1	48	110614	Screw-Hx hd 10-24 x 2-3/8	1
11	83887	. Body Asy-Pump	1	49		Carburetor Asy (Fig 6)	
12	110653	"O" Ring	1	50	110652	Screw-Pan hd 8-32 x 1-1/8	1
13	92962	Kit-Muffler	1	51	100080	Washer-#8	1
14	110681	. Screw Skt 10-24x1/4	1	52	89057	Gasket-Carburetor	1
15	92961	. Deflector-Exhaust	1	53	89056	Insulator	1
16	93036	. Screw-Special	1	54	89054	Gasket-Insulator	1
17	92956	. Body-Cover	1	55	89648	Shield	1
18		Deleted		56	93353	Deflector-Sawdust	1
19	63432	Spark Plug	1	57	110674	Screw-Hx hd 10-24 x 1/2 s/t	2
20	89060	Rod-Throttle	1	58	91441	Cylinder & Crankcase Asy	1
21	89059	Hose-Fuel	1	59	83856	. Bolt-Bar mounting	1
22	90660	Adapter-Fuel hose	1	60	91440	. Stud	1
23	110908	"O" Ring	1	61	105367	Nut-Hx 10-24	1
24*	110970	Nut-Hx 5/16-24	1	62	91704	Piston Asy	1
25	91961	Flywheel & Pawl Asy	1	63	88126	. Pin-Piston	1
26	68796	. Pin-Pawl	2	64	91703	. Ring Set-Piston	1
27	67814	. Spring-Pawl	2	65	92023	Ring-Retaining	2
28	91872	. Pawl-Starter	2	66	91705	Connecting Rod Asy	1
29	102164	Key-Woodruff	1	67	110933	. Bearing-Caged	1
30	110586	Screw-Pan hd 8-32x1-3/4	2	68	66853	. Screw-Special	2
31	100080	Washer-#8	2	69	68095	. Roller-Needle (Set of 20)	1
32	84957	Coil & Lamination Asy	1	70	91566	Sleeve Asy-Bearing	2
33	50120	. Wire Asy-Spark plug	1	71	91422	. Sleeve	2
34	110617	Screw-Pan hd 6-32x3/4	1	72	83859	. Seal-Oil	2
35	69344	Wire Asy-Coil		73	66854	. Bearing-Needle	2
36	110969	Screw-Pan hd 8-32 x 1/2 s/t	1	74	91932	Crankshaft	1
37	85358	Condenser	1				
38	110975	Nut-Speed	1				

*Flywheel nut torque should be 190 to 200 pound x inches (21.5 to 22.6 N.m)

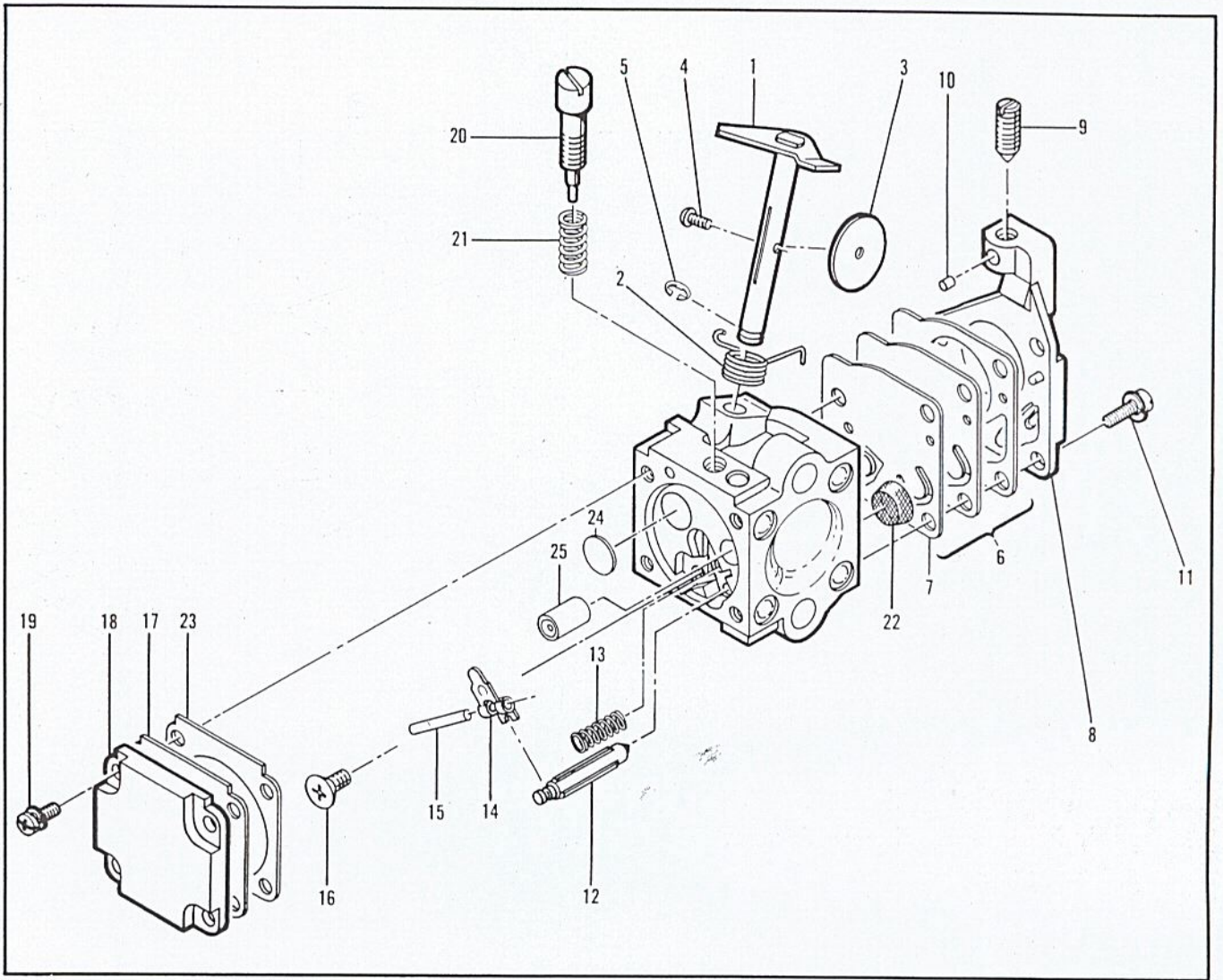


Figure 6. Carburetor Assembly

Figure 6. Carburetor Assembly

Item No.	Part Number	Description	Units Per Asy
	91571	Carburetor Asy (Shingawa)	1
1	91801	. Shaft Asy-Throttle	1
2	91802	. Spring-Throttle return	1
3	91803	. Plate-Throttle	1
4	91804	. Screw-Plate (m3)*	1
5	91805	. "E" Ring	1
6	91824	①. Kit-Diaphragm & Gaskets	1
7	92093	. . Diaphragm-Fuel pump	1
8	91806	. Cover-Fuel pump	1
9	91807	. Screw-Idle speed	1
10	91808	. Insert-Friction	1
11	91809	. Screw-Pump cover (m4)*	4
12	91810	①. Needle-Inlet	1
13	91811	①. Spring-Lever	1
14	91812	①. Lever-Inlet needle	1

Item No.	Part Number	Description	Units Per Asy
15	91813	①. Pin-Lever	1
16	91814	. Screw-Lever pin (m3)*	1
17	91815	①. Diaphragm Asy-Metering	1
18	91816	. Cover-Diaphragm	1
19	91817	. Screw-Diaphragm cover (m3)*	4
20	91818	①. Needle-Idle mixture	1
21	91819	①. Spring-Needle	1
22	91820	①. Screen-Filter	1
23	91821	①. Gasket-Metering diaphragm	1
24	92097	. Welch Plug	1
25	91822	①. Orifice-Main fuel	1
	92751	② Orifice-Main fuel	Alt

* The "m" denotes metric screw size.

① Contained in Repair Kit, P/N 91823.

② Recommended for use above 5,000 ft. altitude.

Accessories

Part Number	Description
89685	Kit-Spark Arrester
85687	Wrench
88756	Scrench
90256	Kit-Tune Up
93090	Guide-Timing
68747	Gasket-Exhaust

Part Number	Description
90607A	Guide-File
92913	Guard-Bar, 14"
92896	Guard-Bar, 16"
91735	Kit-Spike
110928	. Screw-Hx 10-24x1/2