

# ILLUSTRATED PARTS LIST

MODELS	SERIAL NUMBER PREFIX	MODELS	SERIAL NUMBER PREFIX
400034C	11		
400034D	11		

McCulloch saws are identified by a model number (in this instance, 400034 ) followed by a suffix letter (A, B, C, etc.) stamped on the identification plate attached to the saw. Suffix letters denote variations in parts or assemblies in the manufacture of the saw.

Part numbers listed in this I.P.L. which have a suffix letter or letters following the description, indicate the part is used only on the model(s) identified by the letter or letters.

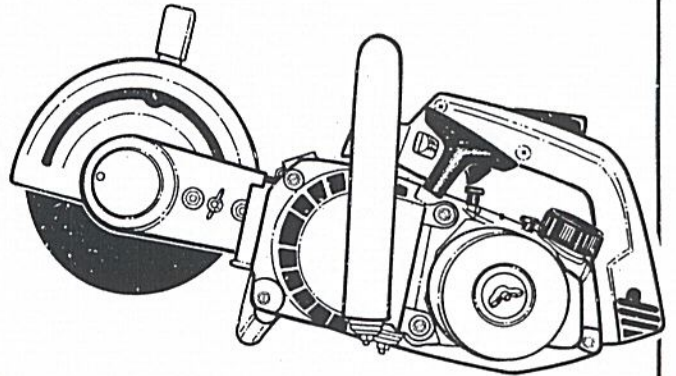
Part numbers and descriptions without suffix letter or letters apply to all versions of the chain saw model.

Part numbers which have one or more dots (.) preceding their descriptions may be ordered individually, but they are also included in the kit or assembly whose description begins directly above the dot(s).

Part numbers in this IPL which were not in the previous IPL covering these saws, are indicated by a dash (-) preceding the new part number.

The policy of McCulloch Corporation is one of continual improvement in design, manufacturing and engineering advancement wherever possible to assure still finer two-cycle power tools. Hence, specifications, equipment, colors, design and manufacturer's suggested list prices are subject to change without notice and McCulloch Corporation reserves the right to make such changes without prior notification or obligation to backfit or supply backfit components for units previously shipped from the factory.

## PRO MAC™ 390 CUT-OFF SAW



### - CONTENTS -

	Page
Figure 1. General Assembly.....	2
Figure 2. Air Filter Assembly.....	3
Figure 3. Carburetor Assembly.....	4
Figure 4. Powerhead Assembly.....	5
Figure 5. Handle Assembly.....	6
Figure 6. Cut-Off Assembly.....	7
Accessories and Specifications.....	8

September 1984

**McCULLOCH**  
**CORPORATION**

© U.S.A. - McCulloch Corporation, 1984

Printed in U.S.A.

218037

Figure 1. General Assembly

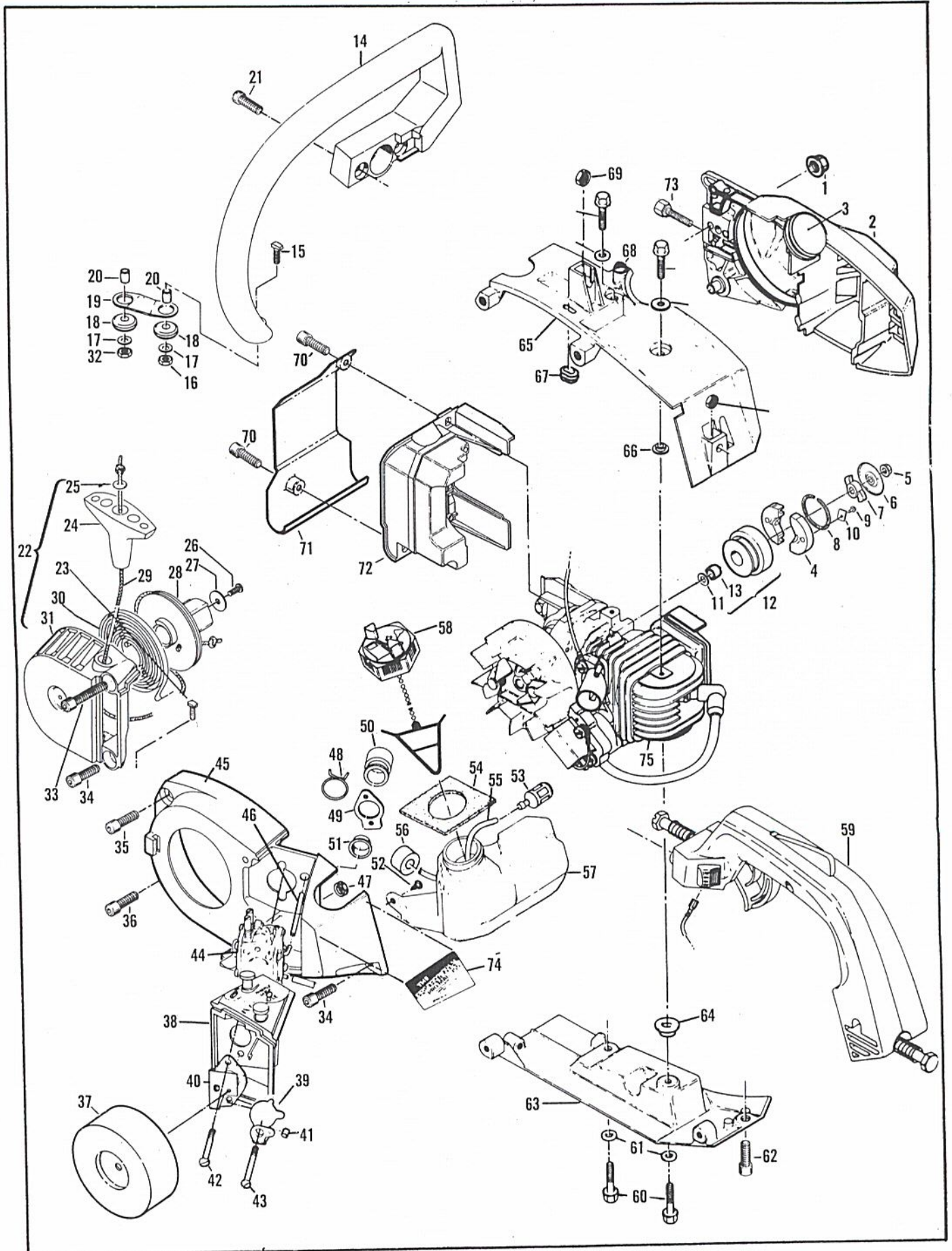
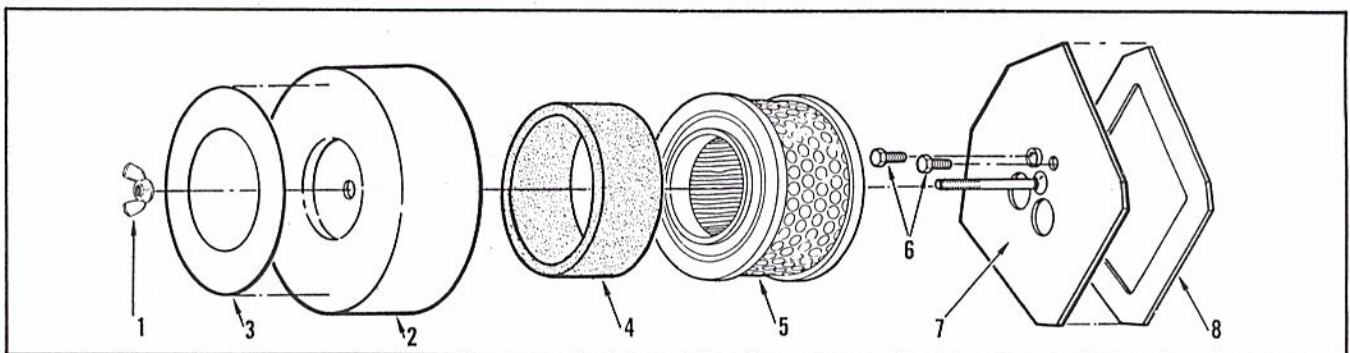




Figure 1. General

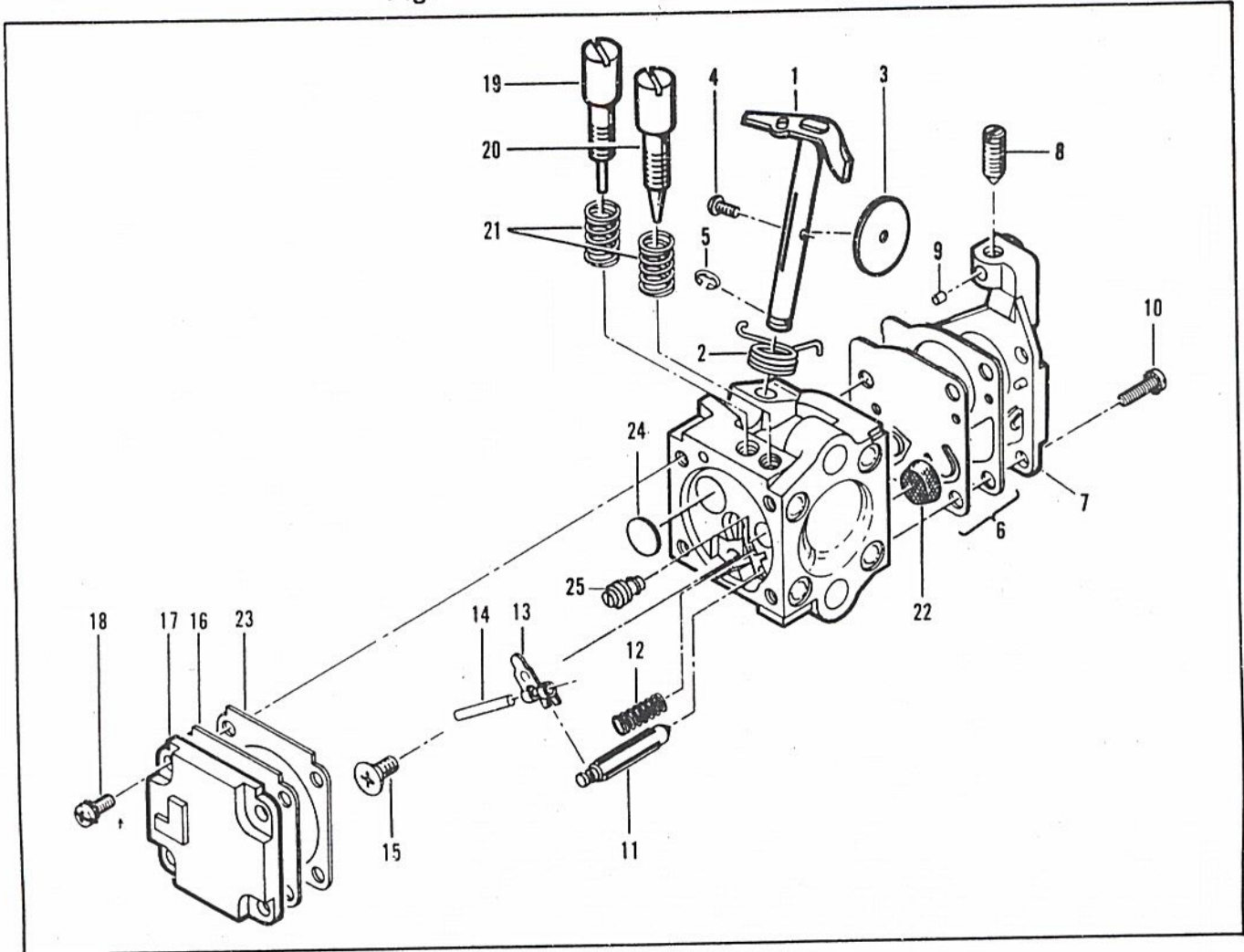
ITEM NO.	PART NUMBER	DESCRIPTION	UNITS PER ASY.	ITEM NO.	PART NUMBER	DESCRIPTION	UNITS PER ASY.
1	110676	Nut - Hex 1/4-28 Flange	1	41	213420	Spacer	1
2	217772	Housing - Clutch	1	42	213105	Screw - Pan M5 x 55	1
3	93528A	Cover - AUTO SHARP	1	43	213104	Screw - Special M5 x 50	1
4	213278	Clutch - Assembly	1	44		Carburetor Assembly (Fig. 3)	
5	94244	. Nut - Clutch	1	45	215563	Kit - Fan Housing/Grommet	1
6	94243	. Plate - Dust	1	46	213542	. Hose - Pulse	1
7	94242	. Rotor - Clutch	1	47	94501	. Nut - Hex M5 x 0.8	1
8	93608	. Spring Assembly - Clutch	1	48	94302	Clip - Spring	1
9	110957	. Rivet - FL 1/8 x .547	2	49	92747	Flange - Carburetor Mounting	1
10	85064	. Plate - Clutch Shoe	2	50	213211	Kit- Carburetor Boot	1
11	215259	Washer	1	51	95656	. Eyelet	1
12	217611	Drum/Pulley/Bearing Asy.	1	52	111002	Screw - Pan 10-16 x .5	1
13	217489	. Bearing	1	53	93720	Pickup - Fuel	1
14	216816	Kit - Frame Assembly	1	54	94491	Seal Fuel Vent	1
15	216064	. Bolt - M5 T-Head	1	55	93997	Hose - Fuel	1
16	216585	. Nut - Hex M5 Lock	1	56	90869	Filter - Vent	1
17	216522	Washer - M5	2	57	216666	Kit - Fuel Tank	1
18	110989	Grommet	2	58	216098	. Cap Assembly - Fuel	1
19	93152	Link	1	59		Handle Assembly (Figure 5)	
20	93057	Spacer - Mount	2	60	216464	Screw - Hex M6 x 17 W/H	4
21	216206	Screw - Skt M4 x 25 SEMS	2	61	213021	Washer - Ramp Conical	4
22	216491	Kit - Starter Assembly	1	62	216465	Screw - Skt M5 x 21 SEMS	4
23	216064	. Bolt - M5 T-Head	1	63	214154	Kit - Bottom Shroud	1
24	91255	. Kit - Starter Handle	1	64	214350	. Insulator	1
25	105490	. . Washer - Starter Handle	1	65	214152	Kit - Top Shroud	1
26	110041	. Screw - Pan 8-32 x .50	1	66	214350	. Insulator	1
27	68497	. Washer	1	67	94192	Grommet	1
28	213261	. Drum/Rope Assembly	1	68	217854	Plug - Oiler Hole	1
29	83203	. . Rope - Starter	1	69	120034	Nut - Hex Head M6 x 1	2
30	83078	. Spring - Starter Rewind	1	70	216465	Screw - Skt Head M5 x 21	2
31	216485	. Housing Assembly - Starter	1	71	217485	Foot	1
32	216585	. Nut - Hex Lock M5	1	72	217717	Housing - Front	1
33	216466	Screw - Skt Hd M5 x 56	1	73	217514	Screw - Arm Adjustment	1
34	216467	Screw - Skt Hd M5 x 19	1	74	217646	Plate - Name	1
35	216465	Screw - Skt Hd M5 x 21	1	75		Powerhead Assembly (Fig. 4)	
36	216470	Screw - Skt Hd M5 x 18	1				
37		Air Filter Asy. (Figure 2)					
38	215482	Airbox Assembly	1				
39	213411	Plate - Choke	1				
40	217714	Bracket - Choke	1				

Figure 2. Air Filter Assembly



ITEM NO.	PART NUMBER	DESCRIPTION	UNITS PER ASY.	ITEM NO.	PART NUMBER	DESCRIPTION	UNITS PER ASY.
1	217495	Wing Nut	1	5	217493	Element Filter	1
2	217858	Cap/Decal Assembly	1	6	217492	Screw	2
3	217852	. Decal - Caution	1	7	217954	Gasket/Plate Assembly	1
4	217833	Pre-Filter	1	8	217491	. Gasket - Air Filter Plate	1

Figure 3. Carburetor Assembly.



ITEM NO.	PART NUMBER	DESCRIPTION	UNITS PER ASY.
	94496	Carburetor Asy (Zama)	1
1	-	Shaft Asy - Throttle	1
2	-	Spring - Throttle return	1
3	-	Plate - Throttle	1
4	-	Screw - Plate (M3)*	1
5	-	"E" Ring	1
6	91824②①	Kit - Diaphragm & Gaskets	1
7	-	Cover Asy - Pump	1
8	-	Screw - Idle speed	1
9	-	Insert - Friction	1
10	-	Screw - Pump cover (M4)*	4
11	91810 ①	Needle - Inlet	1
12	91811 ①	Spring - Lever	1

ITEM NO.	PART NUMBER	DESCRIPTION	UNITS PER ASY.
13	91812 ①	Lever - Inlet needle	1
14	91813 ①	Pin - Lever	1
15	91814 ①	Screw - Lever pin (M3)*	1
16	91815 ②①	Diaphragm Asy - Metering	1
17	-	Cover - Diaphragm	1
18	-	Screw - Diaphragm cover(M3)*4	4
19	94209 ③	Screw - Idle adjust	1
20	94208 ③	Screw - Main adjust	1
21	91819 ③	Spring - Needle	2
22	91820 ①	Screen - Filter	1
23	91821 ②①	Gasket - Metering diaphragm	1
24	92097 ①	Welsh Plug	1
25	93950 ①	Orifice - Main fuel	1

\* The "M" denotes metric screw size.

① Contained in Repair Kit, P/N 216732.

② Contained in Gasket/Diaphragm Kit, P/N 216733.

③ Contained in Needle Kit, P/N 216804.

NOTE: Items not listed with part numbers are shown for identification and disassembly sequence purposes only. They are NOT available as service parts.



Figure 4. Powerhead Assembly

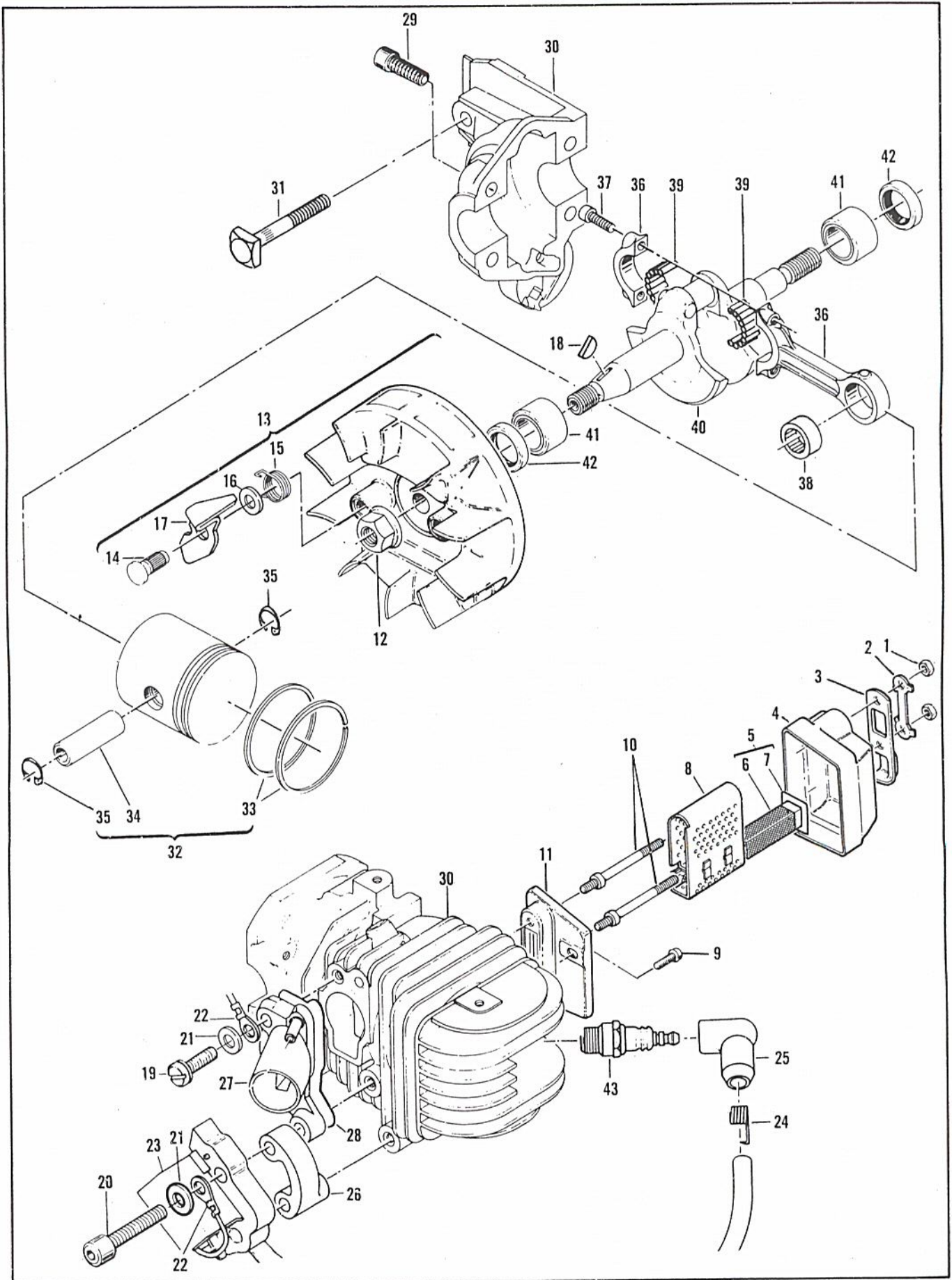
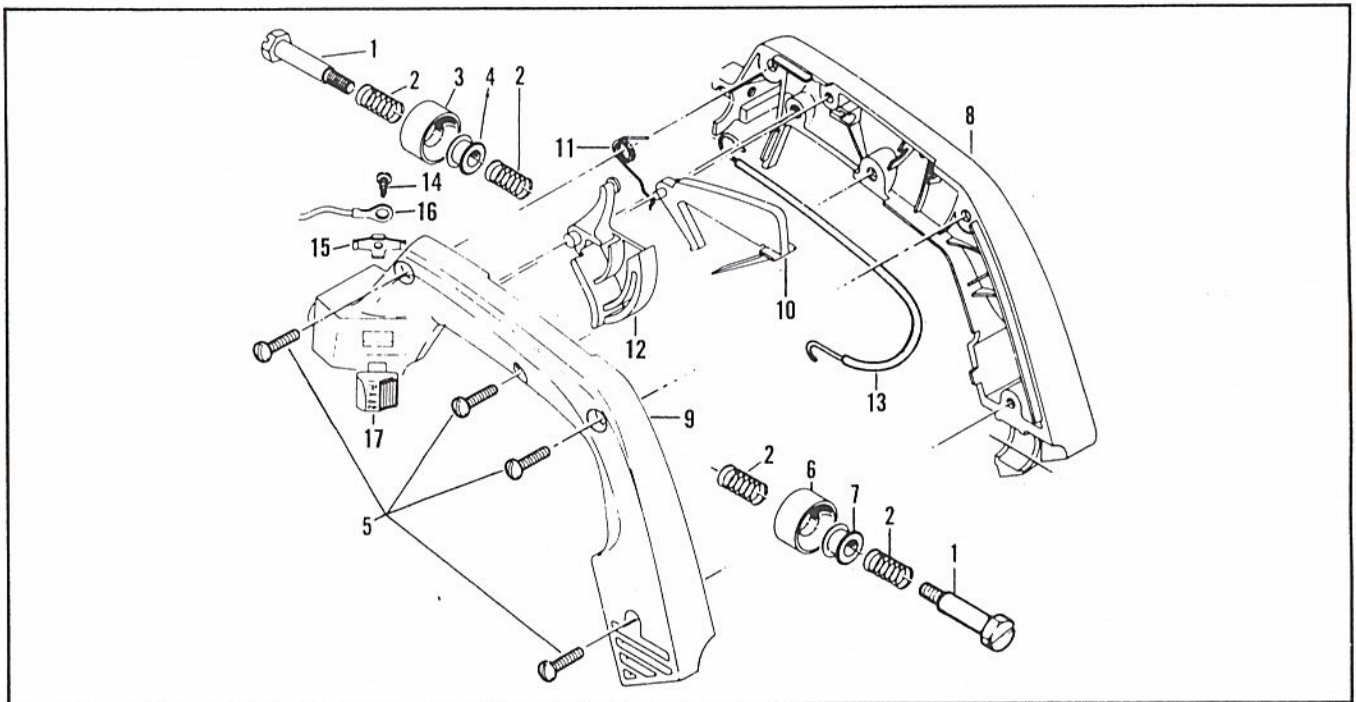


Figure 4. Powerhead Assembly

ITEM NO.	PART NUMBER	DESCRIPTION	UNITS PER ASY.	ITEM NO.	PART NUMBER	DESCRIPTION	UNITS PER ASY.
1	215871	Nut - Muffler	2	23	216599	Electronic Ignition System	1
2	215471	Plate - Lock	1	24	102556	. Connector - Spark Plug	1
3	215472	Deflector - Exhaust	1	25	95266	. Boot - Spark Plug	1
4	215774	Cover - Muffler	1	26	214356	Spacer - Baked	1
5	216805	Kit - Spark Arrester	1	27	215601	Manifold - Carburetor	1
6	-- --	. Screen	1	28	92778	Gasket - Manifold	1
7	-- --	. Eyelet	1	29	120097	Screw - Hex Head M5 x 25	4
8	215776	Baffle - Muffler	1	30	218331	Kit - Cylinder/Crankcase	1
9	213369	Screw - Hex Head M6 x 1	1	31	83856	. Bolt - Arm Mounting	1
10	215757	Bolt - Shoulder	2	32	94660	Piston Assembly	1
11	215773	Base - Muffler	1	33	94136	. Ring - Set	1
12	213169	Nut - Hex Flange M8	1	34	92836	. Pin - Piston	1
13	94737	Flywheel/Pawl Assembly	1	35	111026	. Ring - Snap	2
14	216984	. Pin - Starter Pawl	2	36	94135	Connecting Rod Assembly	1
15	216982	. Spring - Starter Pawl	2	37	94654	. Screw - Connecting Rod	2
16	93469	. Washer - Starter Pawl	2	38	110984	. Bearing - Needle	1
17	216983	. Pawl - Starter	2	39	68095	. Roller- Needle (Set of 20)	1
18	102164	Key - Woodruff	1	40	92750	Crankshaft	1
19	120027	Screw - Pan Head M5 x 18	1	41	213282	Bearing - Crankshaft	2
20	120112	Screw - Skt Head M5 x 40	2	42	83859	Seal - Crankshaft	2
21	216683	Washer - Special	2	43	62345	① Spark Plug - AC-CS45T	1
22	93514A	Wire Assembly - Ground	1	43	92879	② Spark Plug - CH RDJ8	1

① Used on model with suffix letter D.  
 ② Used on model with suffix letter C.

Figure 5. Handle Assembly

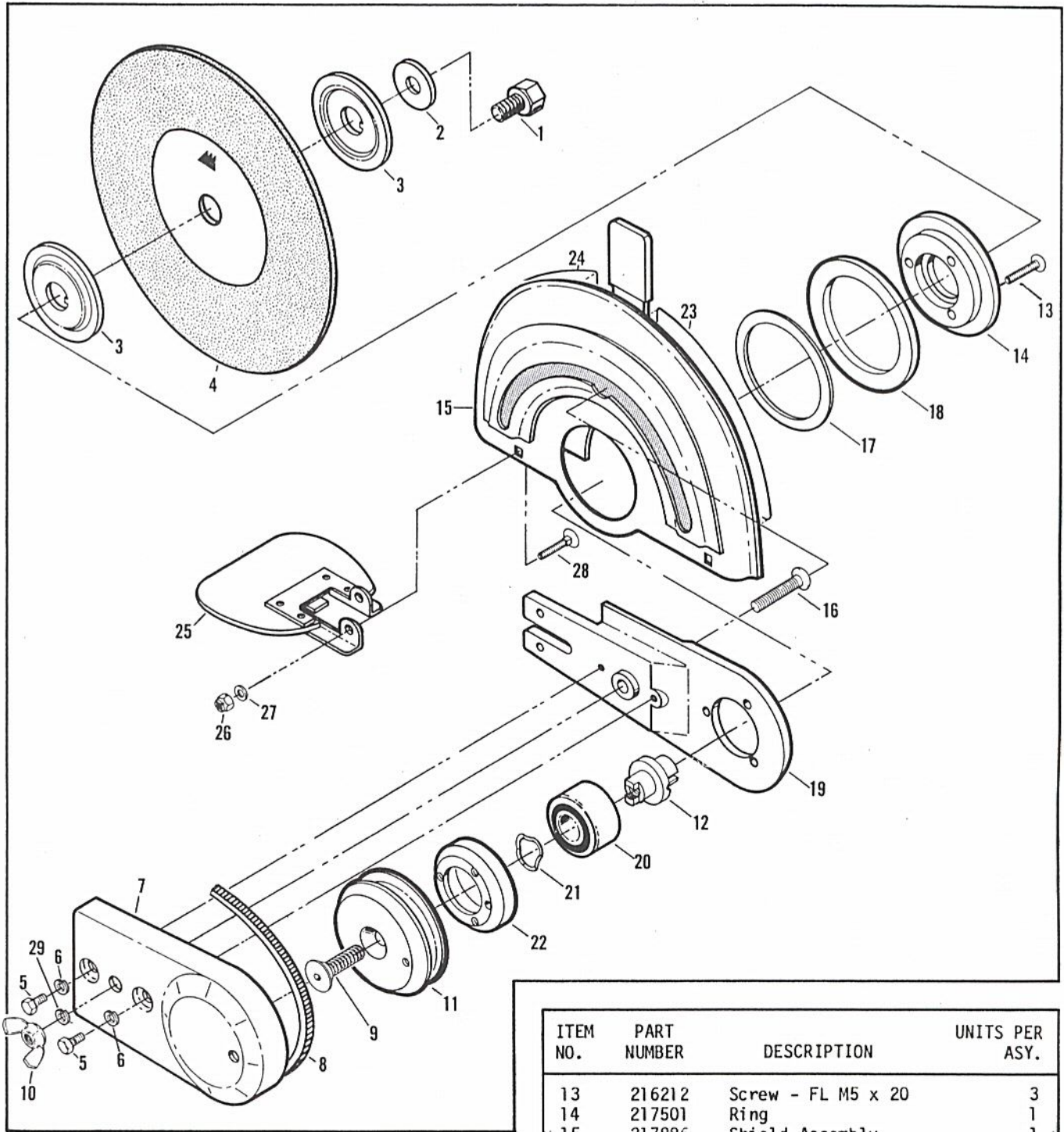


ITEM NO.	PART NUMBER	DESCRIPTION	UNITS PER ASY.
1	216468	Bolt - Shoulder	2
2	93530A	Spring - Mount	4
3	92704	Mount	1
4	94038	Hub - Mount	1
5	111032	. Screw - Pan Hd 10-16 x 5/8	4
6	92704	. Mount	1
7	94038	. Hub - Mount	1
8	213229	. Handle - Right Half	1

ITEM NO.	PART NUMBER	DESCRIPTION	UNITS PER ASY.
9	213228	Handle - Left Half	1
10	93310	. Trigger - Safety	1
11	93515	. Spring - Trigger	1
12	213232	. Trigger - Throttle	1
13	213234	. Wire Assembly - Throttle	1
14	110706	. Screw - Pan Hd 8-18 x 1/2	1
15	62451	. Contact - Ignition Switch	1
16	93505A	. Wire - Stop Switch	1
17	68846	. Button - Stop Switch	1



Figure 6. Cut-Off Assembly



ITEM NO.	PART NUMBER	DESCRIPTION	UNITS PER ASY.
1	217511	Screw - M8	1
2	217510	Washer	1
3	217507	Plate - Drive	2
4	217508	Wheel - Cut-Off Metal	1
4	217509	Wheel - Cut-Off Stone	1
5	120100	Screw - Hex Hd M5 x 12	2
6	213152	Washer Lock 5mm	2
7	217513	Belt - Guard	1
8	217512	Belt - Drive	1
9	217506	Screw - Flat Head Cap	1
10	217495	Wing Nut	1
11	217505	Pulley	1
12	217504	Shaft	1

ITEM NO.	PART NUMBER	DESCRIPTION	UNITS PER ASY.
13	216212	Screw - FL M5 x 20	3
14	217501	Ring	1
15	217886	Shield Assembly	1
16	217930	Bolt - Round 1/4-20	1
17	217609	Shim	1
18	217499	Gasket - Rubber	1
19	217497	Arm	1
20	217498	Bearing	1
21	217503	Ring - Spring Wave	1
22	217502	Flange	1
23	217851	Decal - Caution Shield	1
23	218033	Decal -Caution Shield (French)	1
24	217855	Decal - Caution Shield	1
24	218034	Decal -Caution Shield (French)	1
25	217591	Flap Assembly	1
26	105423	Nut - Carriage 10-24	2
27	216536	Washer - Plain	2
28	217952	Bolt - 10-24	2
29	218338	Lockwasher	1

TOOLS AND ACCESSORIES

PART NUMBER	DESCRIPTION	PART NUMBER	DESCRIPTION
214220	Scrench	94415	Adaptor - Intake (Air Box)
93797	Wrench - Screwdriver	68917	Adaptor - Exhaust
91226	Holder - Flywheel	85229	Kit - Pressure Test
216113	Key - Socket 3mm	215432	Tool - Pressure Test
216107	Key - Socket 4mm	63094	Driver - Wrist Pin
214212	Kit - Tool	501334	Tester - Ignition
216805	Kit - Spark Arrester Screen	110083	R.T.V. Sealant
94416	Adaptor - Intake (Cylinder)	67537	Loctite
110706	Tool - Handle/Throttle Screw	69794	Locquic

SERVICE SPECIFICATIONS

DISPLACEMENT . . . . .	35cc (2.1 cu. in.)	FUEL TYPE . . . . .	Regular Grade Leaded
BORE and STROKE . . . . .	38mm x 30.5mm (1.5 in. x 1.201 in.)	FUEL/OIL MIXTURE . . . . .	40:1 w/McCulloch Oil
BEARINGS MAIN: . . . . .	Needle	FILTERING SYSTEM:	
INTAKE SYSTEM. . . . .	3rd Port	FUEL . . . . .	Enclosed Felt Fuel Filter
FUEL TANK CAPACITY . . . . .	330cc (11.2 oz.)	AIR . . . . .	Foam Pre-Filter
CLUTCH ENGAGING SPEED. . . . .	3800 RPM		Element Filter
IDLE SPEED . . . . .	2700 to 2900 RPM	TIMING. . . . .	26° B.T.D.C.
IGNITION . . . . .	Electronic	PISTON RINGS. . . . .	2 Cast Iron Compression
CARBURETOR . . . . .	Diaphragm Type, 2 Needle Adjustable	WEIGHT. . . . .	15.3 Pounds

To answer service-related questions and to solve common consumer problems quickly, we invite you to call this toll-free hot-line:

Arizona residents please call collect (602)453-3681

**(800) 423-6302**