

# ILLUSTRATED PARTS LIST

**THE PROFESSIONAL**

## PRO MAC 355, 365, 375 CHAIN SAW

PM 355		PM 365		PM 375	
MODELS	SERIAL NUMBER PREFIX	MODELS	SERIAL NUMBER PREFIX	MODELS	SERIAL NUMBER PREFIX
600113B	12-	600113C	12-	600114B	12-

McCulloch chain saws are identified by a model number (in this instance, 600113 ) followed by a suffix letter (A, B, C, etc.) stamped on the identification plate attached to the saw. Suffix letters denote variations in parts or assemblies in the manufacture of the saw.

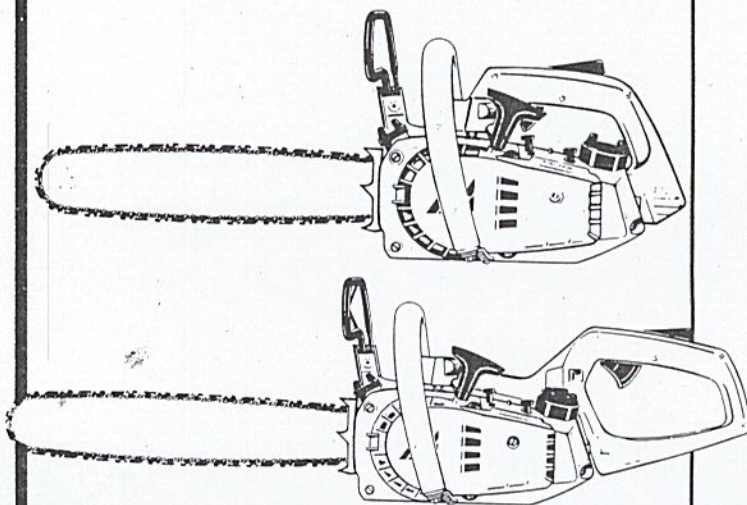
Part numbers listed in this I.P.L. which have a suffix letter or letters following the description, indicate the part is used only on the model(s) identified by the letter or letters.

Part numbers and descriptions without suffix letter or letters apply to all versions of the chain saw model.

Part numbers which have one or more dots (.) preceding their descriptions may be ordered individually, but they are also included in the kit or assembly whose description begins directly above the dot(s).

Part numbers in this IPL which were not in the previous IPL covering these saws, are indicated by a dash (-) preceding the new part number.

The policy of McCulloch is one of continual improvement in design, manufacturing and engineering advancement wherever possible to assure still finer two-cycle power tools. Hence, specifications, equipment, colors, design and manufacturer's suggested list prices are subject to change without notice and McCulloch reserves the right to make such changes without prior notification or obligation to backfit or supply backfit components for units previously shipped from the factory.



### - CONTENTS -

	Page
Figure 1. General . . . . .	2
Figure 2. CHAIN BRAKE Assembly . . . . .	4
Figure 3. Carburetor Assembly . . . . .	5
Figure 4. Powerhead Assembly . . . . .	6
Figure 5. Handle Assemblies . . . . .	8
Service Specifications . . . . .	9
Bar & Chain Combinations . . . . .	9
Tools and Accessories . . . . .	9

September 1982





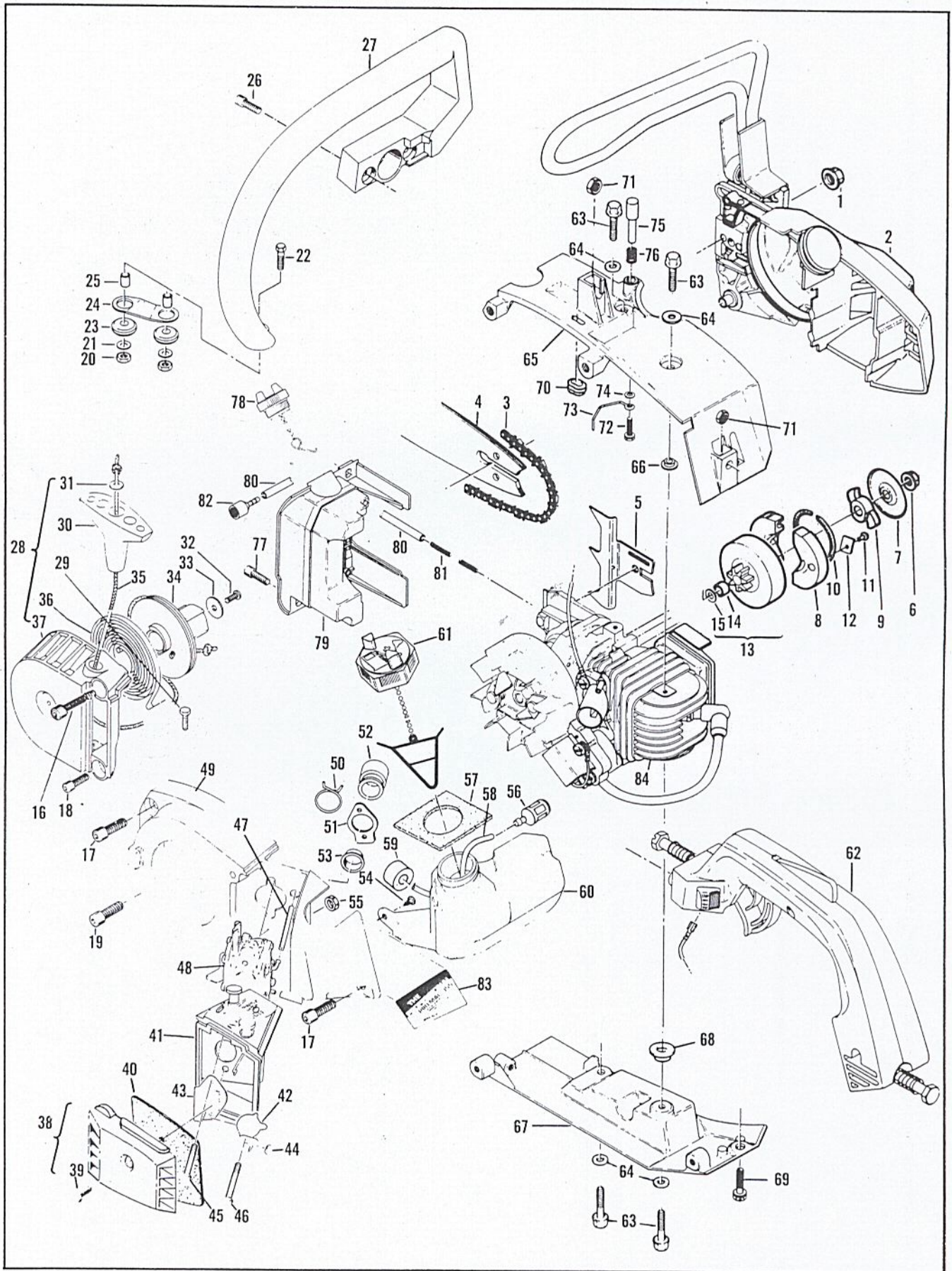


Figure 1. General

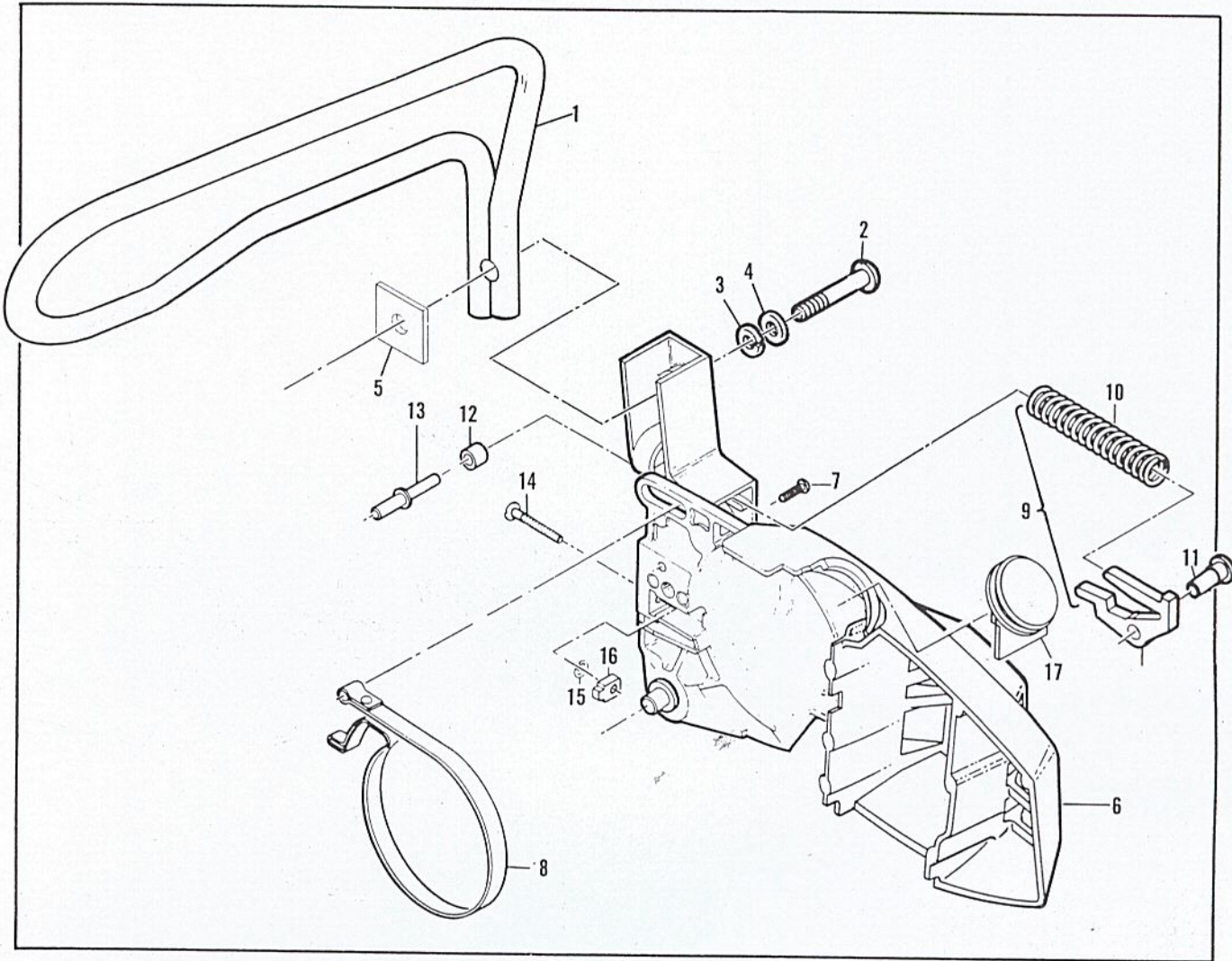


FIGURE 1. GENERAL

ITEM NO.	PART NUMBER	DESCRIPTION	UNITS PER ASY.	ITEM NO.	PART NUMBER	DESCRIPTION	UNITS PER ASY.
1	216476	Nut-Hx Flg M6 x 1.0	1	44	213420	Spacer	1
2	- -	CHAIN BRAKE Assembly (Figure 2)	1	45	213105	Screw-Pan hd M5 x 55	1
3	- -	Chain (see page 9)	1	46	213104	Screw-Special	1
4	- -	Bar (see page 9)	1	47	93151	Hose-Pulse	1
5	214207	Spike	1	48	- -	Carburetor (Figure 3)	1
6	94144	Nut-Clutch	1	49	93101A	Housing-Fan	1
7	94243	Plate-Dust	1	50	94302	Clip-Spring	1
8	213278	Clutch Assembly	1	51	92747	Flange-Carburetor mounting	1
9	- -	. Rotor	1	52	213211	Kit-Carburetor boot	1
10	93608	. Spring Assembly-Clutch	1	53	95656	. Eyelet	1
11	110957	. Rivet-F1 1/8 x .547	2	54	111002	Screw-Pan hd 10-16 x .5	1
12	85064	. Plate-Clutch shoe	2	55	94501	Nut-Hx M5 x 0.8 Thin	1
13	214390	Drum/Sprocket/Bearing Asy	1	56	93720	Pickup-Fuel	1
14	91222	. Bearing	1	57	94491	Seal-Fuel vent	1
15	215259	. Washer-Sprocket	1	58	93997	Hose-Fuel	1
16	216466	Screw-Skt M5 x 56 (SEMS)	1	59	90869	Filter-Vent	1
17	216465	Screw-Skt M5 x 21 (SEMS)	2	60	216666	Kit-Fuel tank	1
18	216467	Screw-Skt M5 x 19 (SEMS)	1	61	216098	. Cap Assembly-Fuel	1
19	216470	Screw-Skt hd M5 x 18 (SEMS)	1	62	- -	Handle Assemblies (Figure 5)	1
20	120044	Nut-Hx M5 Lock	2	63	216464	Screw-Hx Wsh M6 x 17	4
21	216522	Washer-M5	2	64	213021	Washer-Ramp Conical	4
22	213165	Screw-Hx M5 x 25	1	65	214152	Kit-Top shroud	1
23	110989	Grommet	2	66	214350	. Insulator	1
24	93152	Link	1	67	214154	Kit-Bottom shroud	1
25	93057	Spacer-Mount	2	68	214350	. Insulator	1
26	216206	Screw-Skt M4 x 25 (SEMS)	2	69	216465	Screw-Skt M5 x 21 (SEMS)	1
27	92983A	Frame	1	70	94192	Grommet	1
28	94325	Kit-Starter	1	71	120034	Nut-Hx M6 x 1.0	2
29	213165	. Screw-Hx M5 x 25	1	72	110999	Screw-Hx hd 6-20 x 5/8 WH	1
30	91255	. Kit-Starter handle	1	73	94540	Rod-Oiler	1
31	105490	. Washer-Starter handle	1	74	100001	Washer-Plain	1
32	110041	. Screw-Pan 8-32 x .5	1	75	93304A	Knob-Oiler	1
33	68497	. Washer	1	76	93634A	Spring-Compression	1
34	213261	. Drum/Rope Assembly	1	77	216465	Screw-Skt M5 x 21 (SEMS)	2
35	83203	. . Rope-Starter	1	78	216095	Cap-Oil	1
36	83078	. Spring-Starter rewind	1	79	93506A	Tank Assembly-Oil	1
37	214175	. Housing Assembly-Starter	1	80	94405	. Hose-Oil pickup	1
38	215484	Cover Assembly-Air filter	1	81	93998	. Spring-Oil hose	1
39	216469	. Screw-Pan M5 x 16	1	82	92465	. Pickup-Oil	1
40	94970	Filter-Air	1	83	216105	Plate-Name (PM 355)	1
41	215482	Airbox Assembly	1	83	216149	Plate-Name (PM 365)	1
42	213411	Plate-Choke	1	83	216153	Plate-Name (PM 375)	1
43	215455	Bracket-Choke	1	84	- -	Powerhead Assembly (Figure 4)	1



Figure 2. CHAIN BRAKE Assembly.

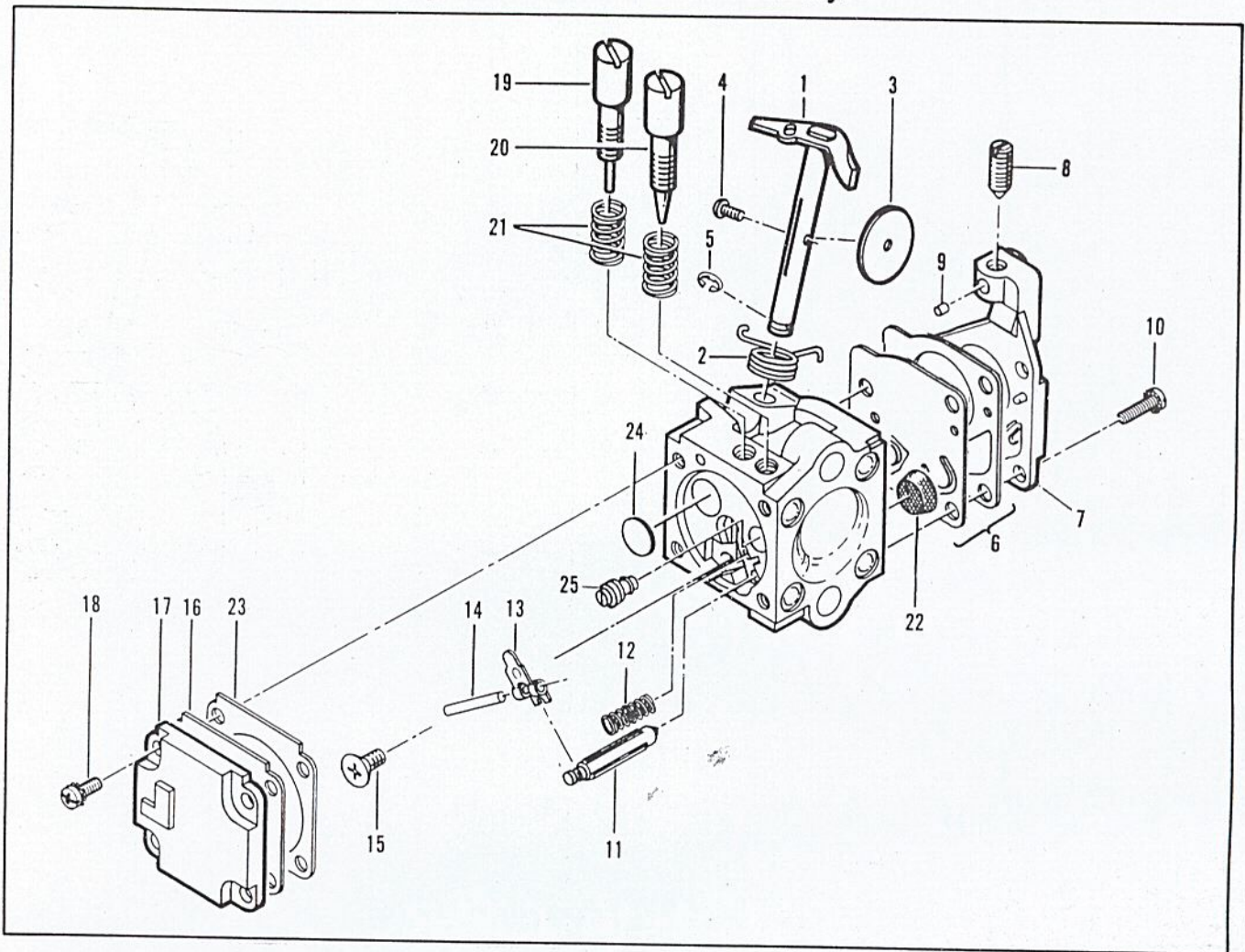


ITEM NO.	PART NUMBER	DESCRIPTION	UNITS PER ASY.
1	216527	Lever-Flag Brake	1
2	216276	Screw-Btn 1/4 - 20 x 13/16	1
3	216542	Washer-lock	1
4	216541	Washer-pl	1
5	216256	Nut-Brake Handle	1
6	216267	CHAIN BRAKE Assembly	1
7	216540	. Screw-Fil 8 -32 x 5/8	1
8	94709	. Band-Brake	1
9	215758	. Kit-Latch	1

ITEM NO.	PART NUMBER	DESCRIPTION	UNITS PER ASY.
10		. . Spring-Compression	1
11	93602	. Pivot-Latch	1
12	214368	. Bearing-roller	1
13	213907	. Pin-Roller	1
14	213052	. Screw-Adjusting	1
15	110907	. Ring-Retaining	1
16	84929	. Nut-Bar Adjusting	1
17	93528A	Cover	1



Figure 3. Carburetor Assembly.



ITEM NO.	PART NUMBER	DESCRIPTION	UNITS PER ASY.
	94496	Carburetor Asy (Zama)	1
1	-	Shaft Asy - Throttle	1
2	-	Spring - Throttle return	1
3	-	Plate - Throttle	1
4	-	Screw - Plate (M3)*	1
5	-	"E" Ring	1
6	91824②①	Kit - Diaphragm & Gaskets	1
7	-	Cover Asy - Pump	1
8	-	Screw - Idle speed	1
9	-	Insert - Friction	1
10	-	Screw - Pump cover (M4)*	4
11	91810 ①	Needle - Inlet	1
12	91811 ①	Spring - Lever	1

ITEM NO.	PART NUMBER	DESCRIPTION	UNITS PER ASY.
13	91812 ①	Lever - Inlet needle	1
14	91813 ①	Pin - Lever	1
15	91814 ①	Screw - Lever pin (M3)*	1
16	91815 ②①	Diaphragm Asy - Metering	1
17	-	Cover - Diaphragm	1
18	-	Screw - Diaphragm cover (M3)*4	4
19	94209 ③	Screw - Idle adjust	1
20	94208 ③	Screw - Main adjust	1
21	91819 ③	Spring - Needle	2
22	91820 ①	Screen - Filter	1
23	91821 ②①	Gasket - Metering diaphragm	1
24	92097 ①	Welsh Plug	1
25	93950 ①	Orifice - Main fuel	1

\* The "M" denotes metric screw size.

① Contained in Repair Kit, P/N 216732.

② Contained in Gasket/Diaphragm Kit, P/N 216733.

③ Contained in Needle Kit, P/N 216804.

NOTE: Items not listed with part numbers are shown for identification and disassembly sequence purposes only. They are NOT available as service parts.



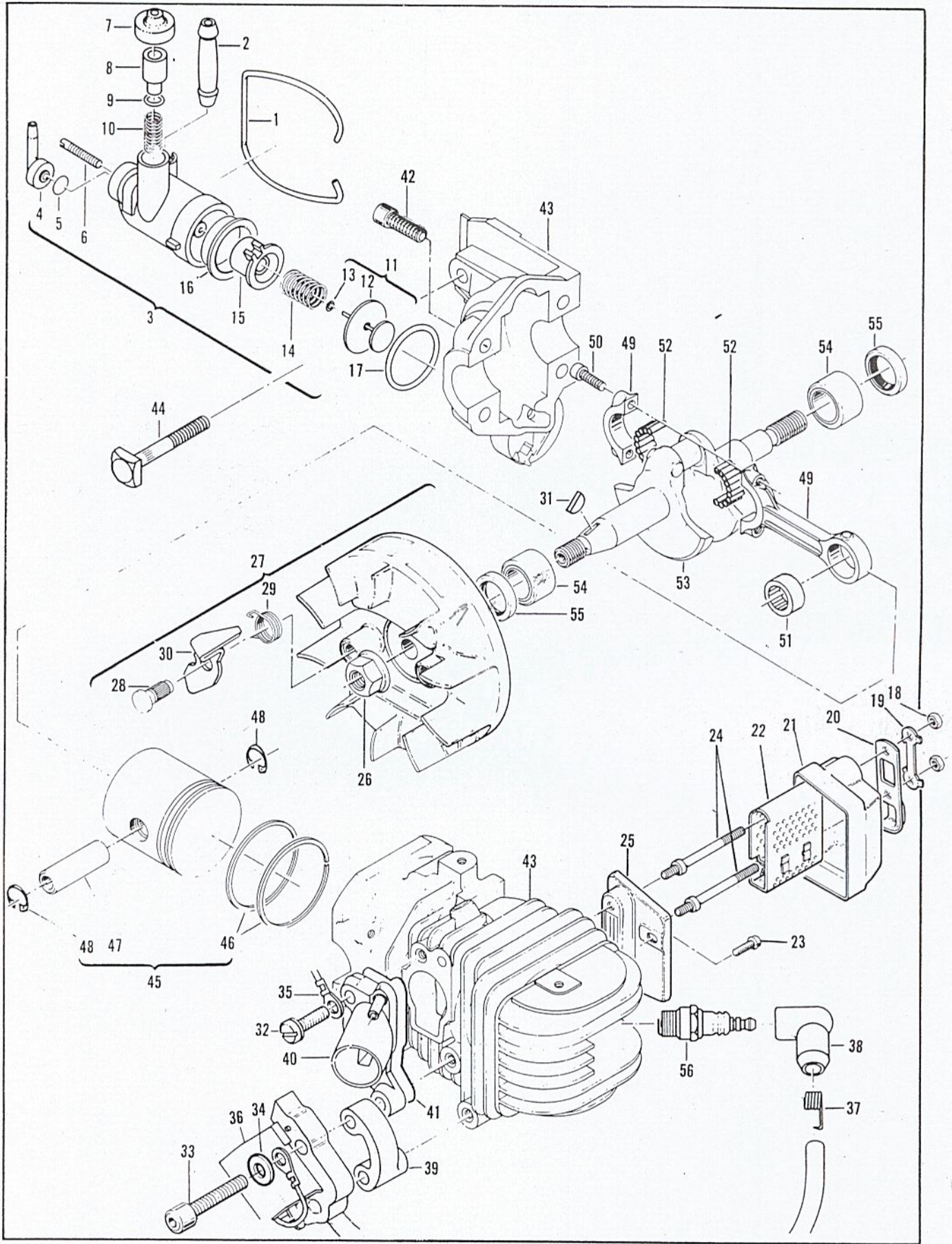


Figure 4. Powerhead Assembly



FIGURE 4. POWERHEAD ASSEMBLY.

ITEM NO.	PART NUMBER	DESCRIPTION	UNITS PER ASY.
1	93150	Bafl	1
2	83898	Connector-Outlet	1
3	216424	Pump Assembly-Chain oiler	1
4	215196	. Connector-Hose	1
5	94115	. Valve-Oiler	1
6	93639	. Screw-6-40 x .800	1
7	215151	. Cap-Oil pump	1
8	93301	. Plunger-Oil pump	1
9	105614	. "0" Ring-.239 x .070	1
10	93632	. Spring	1
11	- -	① . Piston Assembly-Oiler	1
12	- -	① . . Ring-Oil pump piston	1
13	- -	① . . "0" Ring-.114 x .070	1
14	83891	. Spring-Return	1
15	- -	① . Sleeve-Oil pump	1
16	- -	① . Eyelet	1
	216426	Repair Kit-Oil Pump	1
	110653	"0" Ring	1
18	215871	Nut-Muffler	2
19	215471	Plate-Lock	1
20	215472	Deflector-Exhaust	1
21	215774	Cover	1
22	215776	Baffle	1
23	213369	Screw Hx hd M6 x 1	1
24	215757	Bolt-Shoulder	2
25	215773	Base	1
26*	213169	Nut-Hx Flg M8 x 1.25	1
27	94737	Flywheel/Pawl Assembly	1
28	68796	. Pin-Starter pawl	2

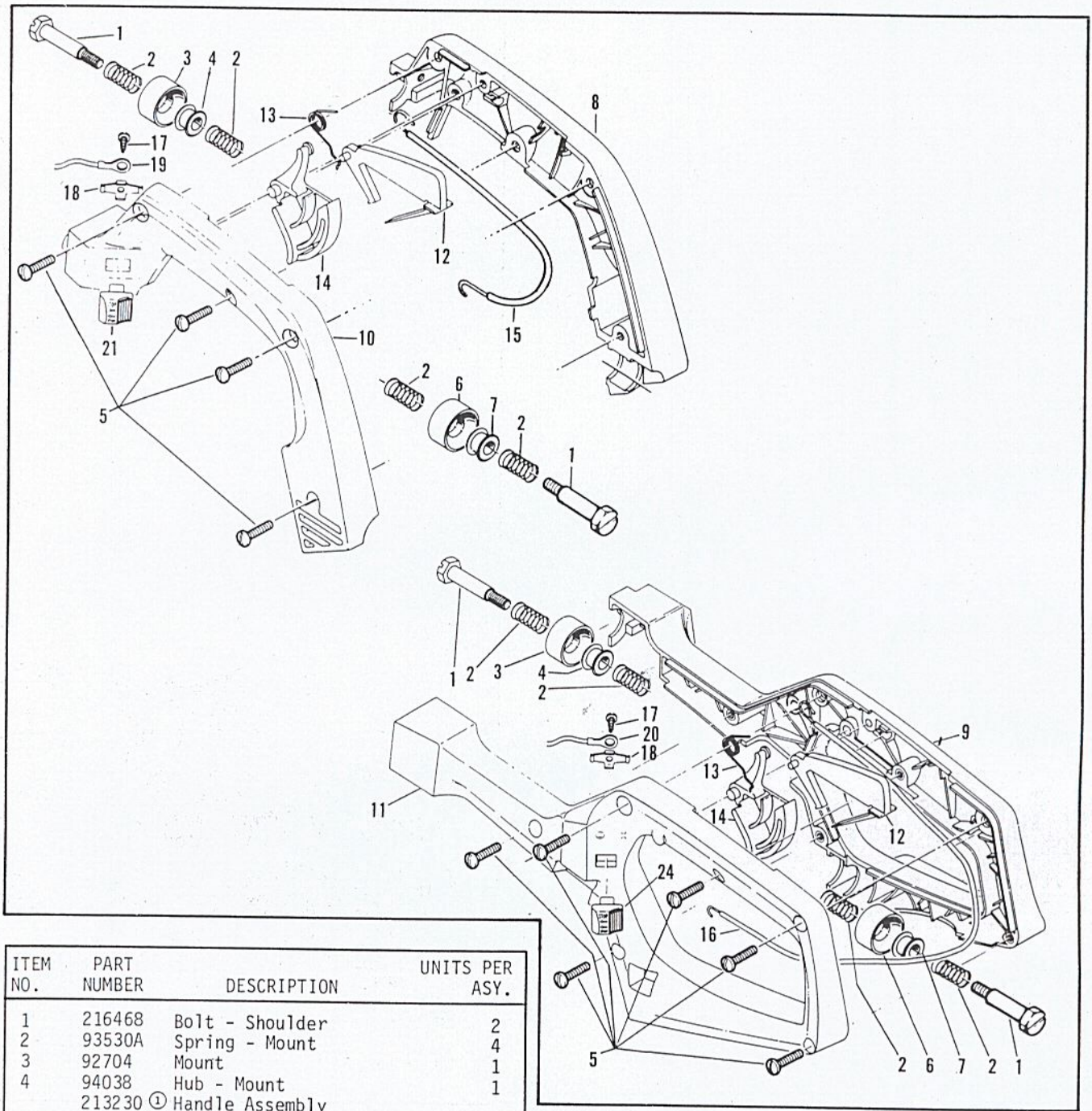
ITEM NO.	PART NUMBER	DESCRIPTION	UNITS PER ASY.
29	67814	. Spring-Pawl	2
30	94493	. Pawl-Starter	2
31	102164	Key-Woodruff	1
32	120027	Screw-Pan hd M5 x 18 (SEMS)	1
33	120112	Screw-Skt hd M5 x 40	2
34	24236	Washer-Special	1
35	93514A	Wire Assembly-Ground	1
36	216599	Electronic Ignition Assembly	1
37	102556	. Connector-Spark plug	1
38	95266	. Boot-Spark plug	1
39	214356	Spacer-Coil	1
40	215601	Manifold-Carburetor	1
41	92778	Gasket-Insulator	1
42	216205	Screw-Skt hd M5 x 25	4
43	215943	Cylinder/Kit	1
44	92777	. Bolt-Bar mounting	1
45	94660	Piston Assembly	1
46	94136	. Ring Set	1
47	93836	. Pin-Piston	1
48	111026	. Ring-Snap	2
49	94135	Connecting Rod Assembly	1
50	94654	. Screw-Connecting rod	2
51	- -	. Bearing-Needle	1
52	68095	. Roller-Needle (set of 20)	1
53	92750	Crankshaft	1
54	213282	Bearing-Crankshaft	2
55	83859	Seal-Crandshaft oil	2
56	214406	Spark Plug (E)	1

\* Flywheel nut torque should be 190 to 200 pound x inches (21.5 to 22.6 N.m).

① Contained in Oil Pump Repair Kit, P/N 216426.



FIGURE 5. HANDLE ASSEMBLIES.



ITEM NO.	PART NUMBER	DESCRIPTION	UNITS PER ASY.
1	216468	Bolt - Shoulder	2
2	93530A	Spring - Mount	4
3	92704	Mount	1
4	94038	Hub - Mount	1
	213230 ①	Handle Assembly	
	213231 ②	Handle Assembly	
5	111032	. Screw - Pan hd 10-16 x 5/8	A/R*
6	92704	. Mount	1
7	94038'	. Hub - Mount	1
8	213229 ①	. Handle - Right half	1
9	213224 ②	. Handle - Long right	1
10	213228 ①	. Handle - Left half	1
11	213226 ②	. Handle - Long left	1
12	93310	. Trigger - Safety	1
13	93515	. Spring - Trigger	1
14	213232	. Trigger - Throttle	1
15	213234 ①	. Wire Assembly - Throttle	1

ITEM NO.	PART NUMBER	DESCRIPTION	UNITS PER ASY.
16	213233 ②	. Wire Assembly - Throttle	1
17	110706	. Screw - Pan hd 8-18 x 1/2	1
18	62451	. Contact - Ignition switch	1
19	93505A	. Wire - Stop switch PRO MAC 355/365	1
20	94039	. Wire - Stop switch PRO MAC 375	1
21	68846	. Button - Stop switch	1

① Used on PRO MAC 355 and PRO MAC 365 models.

② Used on PRO MAC 375 model.

\* Four used on Handle Assembly, P/N 213230.  
Six used on Handle Assembly, P/N 213231.



**BAR and CHAIN COMBINATIONS.**

PART NUMBER	DESCRIPTION
214235	Bar-14" Mini Pro (Sprocket tip)
91730	Bar-14" Mini Mac
90770	Bar-14" Mac 6
214919N	Chain-14" MP 370 GL

PART NUMBER	DESCRIPTION
214236	Bar-16" Mini Pro (Sprocket tip)
90772	Bar-16" Mac 6
214925N	Chain-16" MP 370 GL

**TOOLS and ACCESSORIES.**

PART NUMBER	DESCRIPTION
214207	Spike
94972	Scrench
93797	Wrench - Screwdriver
214194	Lubri-Gun
91226	Holder - Flywheel
94365	Kit - Carrying Case, 14"
92977	.Scabbard, 14"
94364	Kit - Carrying Case, 16"
214202	.Scabbard, 16"
85702	Lubricant - Custom, 6 oz. can
85703	Lubricant - Custom, 6 oz cans, 1-6 pack
216133	Key - Socket - 3mm
216107	Key - Socket - 4mm

PART NUMBER	DESCRIPTION
214212	Kit - Tool
95169	Kit - Spark arrester screen
94416	Adapter - Intake (Cyl.)
94415	Adapter - Intake (Air Box)
68917	Adapter - Exhaust
85229	Kit - Fuel tank plug
215432	Tool - Pressure test
63094	Driver - Wrist pin
501334	Tester - Ignition
67537	Loctite
69794	Locquic
110083	R.T.V. Sealant
110706	Tool - Handle/throttle screw

**SERVICE SPECIFICATIONS.**

Displacement . . . . .	35 cc (2.1 cu. in.)
Bore and Stroke . . . .	38 mm x 30.5 mm (1.5 in. x 1.201 in.)
Bearings . . . . .	Main: Needle
Intake System . . . . .	3rd Port
Fuel Tank Capacity . . .	330 cc (11.2 oz.)
Chain Oiler Capacity . .	100 cc (3.4 oz.)
Clutch Engaging Speed.	3800 R.P.M.
Idle Speed . . . . .	2700 to 2900 R.P.M.
Ignition . . . . .	Electronic
Carburetor . . . . .	Diaphragm Type, 2-needle Adjustable

Fuel Type . . . . .	Regular Grade Leaded
Fuel-Oil Mixture . . . .	40"1 w/McCulloch Oil
Filtering System, Fuel	Enclosed Felt Fuel Filter
Filtering System, Air	Felt Air Filter
Lamination Gap. . . . .	0.3 to 0.4 mm (.011 in. to .015 in.)
Timing . . . . .	26° B.T.D.C.
Piston Rings. . . . .	2 Cast Iron Compression
Weight: PRO MAC 355 . . .	4.49 kg (9.9 lbs.)
PRO MAC 365 . . . . .	4.54 kg (10 lbs.)
PRO MAC 375 . . . . .	4.71 kg (10.5 lbs.)