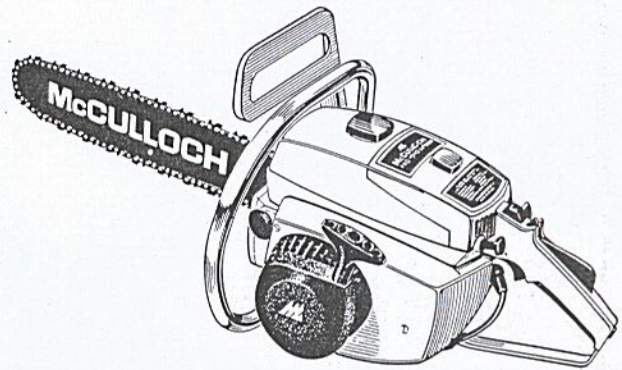


ILLUSTRATED PARTS LIST

MODELS	SERIAL NUMBER PREFIX	MODELS	SERIAL NUMBER PREFIX
600014A	11-	600014K	11-
600014B	11-	600014U	11-
600014C	11-		
600014E	11-		

PRO MAC 10-10 Chain Saw



MARCH 1977

- CONTENTS -

Page

Figure 1. General	2
Figure 2. CHAIN BRAKE Assembly	4
Figure 3. Fan Housing & Starter Asys	4
Figure 4. Carburetor Assembly	6
Figure 5. Fuel Tank Assembly	8
Figure 6. Powerhead Assembly	10
Accessories	9
Service Specifications	9

McC Model Chain Saws are identified by a model number (000000) followed by a suffix letter (A, B, C, etc.) stamped on the identification plate attached to the saw. Suffix letters denote variations in parts or assemblies in the manufacture of the saw.

Part numbers listed in this IPL which have a suffix letter or letters following the description, indicate the part is used only on the model(s) identified by the letter or letters.

Part numbers and descriptions without suffix letter or letters apply to all models of the PRO MAC 10-10.

Part numbers which have one or more dots (.) preceding their description may be ordered individually but they are also included in the kit or assembly whose description begins directly above the dot(s).

Part numbers which have changed since the previous printing of the IPL covering these saws, are indicated by a dash (-) preceding the new part number.

The policy of McCulloch Corporation is one of continual improvement in design, manufacturing and engineering advancement wherever possible to assure still finer two-cycle power tools. Hence, specifications, equipment, colors, design and manufacturer's suggested list prices are subject to change without notice and McCulloch Corporation reserves the right to make such changes without prior notification or obligation to backfit or supply backfit components for units previously shipped from the factory.



PRO MAC 10-10

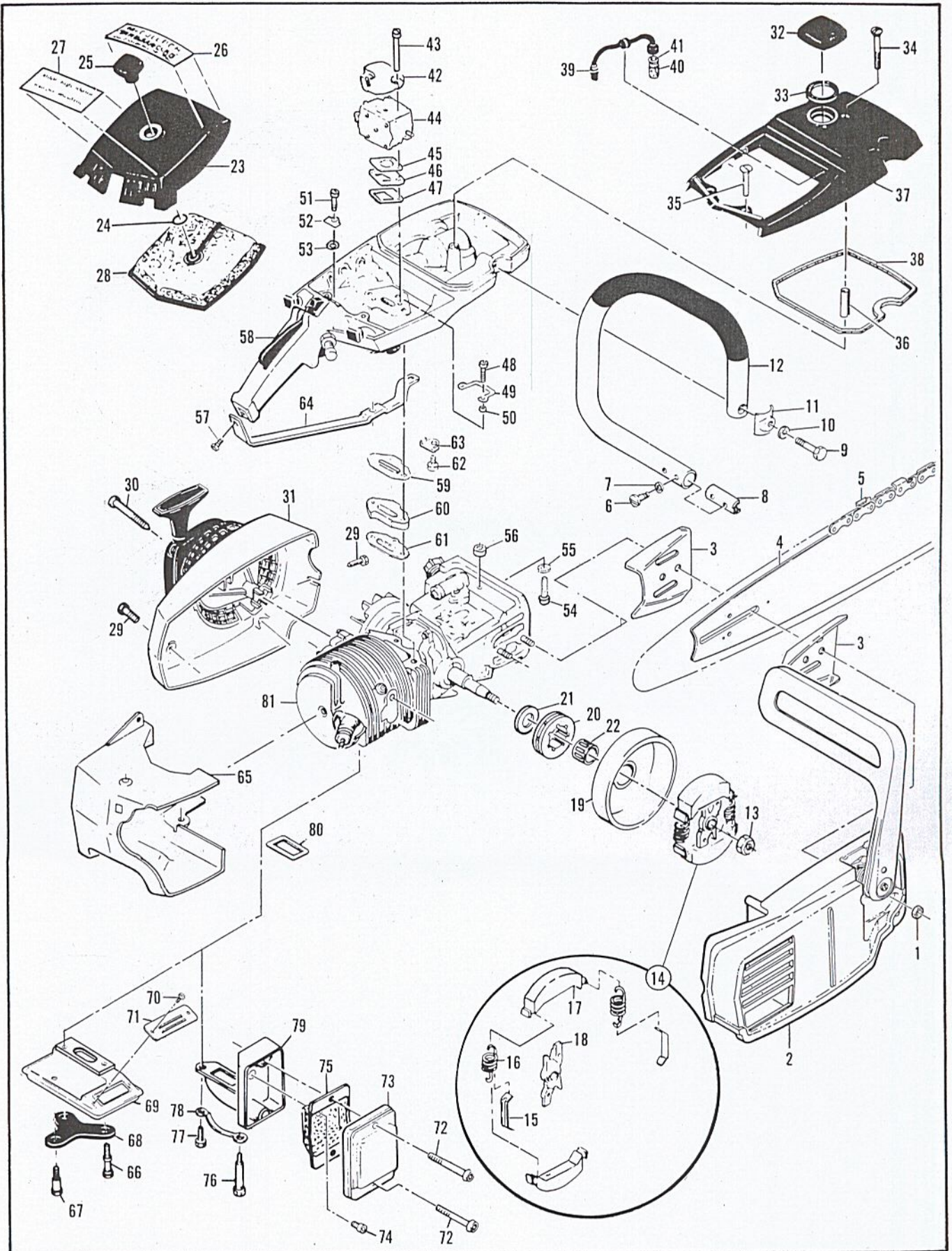


Figure 1. General

Figure 1. General

Item No.	Part Number	Description	Units Per Asy.
1	110961	Nut-Hx 5/16-24	2
2		CHAIN BRAKE Asy (Fig 2)	
3	64330	Set-Bar Plates	1
4	91090	Bar-16" Sprocket Nose	1
5	88166N	Chain Asy-16" PM370G	1
6	110865	Screw-Hx hd 10-24 x 7/8	2
7	100352	Washer-#10	2
8	89727	Retainer-Frame	1
9	102130	Screw-Hx hd 1/4-20 x 1-1/2	1
10	100153	Washer-Lock 1/4	1
11	63484	Clamp-Frame	1
12	87686A	Frame & Grip Asy	1
13	86113	Nut-Hx 3/8-24 (L.H.)	1
14	87675	Clutch Asy	1
15	64583	. Retainer-Spring	2
16	83223	. Spring-Clutch	2
17	67233	. Shoe-Clutch	2
18	89438	. Rotor Asy	1
19	86942	Drum/Spkt Asy-7T .375P (A)	1
20	86344	. Kit-Sprocket 7T .375P (A)	1
21	86958	. Washer-Shim (A)	1
(19)	86946	Drum/Spkt Asy-7T .375P (B,C,E,K,U)	1
(20)	86951	. Kit-Sprocket 7T .375P (B,C,E,K,U,)	1
(21)	86958	. Washer-Shim (B,C,E,K,U)	1
22	110971	Bearing-Sprocket	1
23	68530A	Cover Asy-Air cleaner	1
24	110565	. Ring-Retainer	1
25	68529	. Knob-Cover	1
26	93266	Plate-Name	1
27	91548	Plate-Instruction	1
28	69922	Filter-Air	1
29	110741	Screw-Pan hd 10-24 x 1/2	2
30	87871	Screw-Special	3
31		Fan Housing & Starter Asys (Fig 3)	
32	89322	Cap Asy-Fuel	1
33	69767	. Gasket	1
34	110402	Screw-Oval hd 12-24 x 2-3/8	1
35	103579	Screw-Fil hd 10-24 x 1	2
36	87840	Spacer	1
37	69679	Cover-Fuel tank	1
38	69345	Gasket-Cover	1

Item No.	Part Number	Description	Units Per Asy.
39	64848	Hose Asy-Fuel	1
40	63932	. Filter-Fuel	1
41	100440	. Washer	1
42	69952	Bracket-Air cleaner	1
43	103357	Bolt-Hx hd 10-24 x 2-1/4	2
44		Carburetor Asy (Fig 4)	
45	86189	Gasket-Carburetor	1
46	84078	Spacer-Carburetor	1
47	84081	Gasket-Spacer	1
48	110570	Screw-Hx hd 12-24 x 1-3/8	2
49	68582	Plate-Lock	1
50	102115	Washer-#12	2
51	110568	Screw-Hx hd 12-24 x 1-1/8	1
52	69516	Plate-Lock	1
53	64856	Washer-Special	1
54	110713	Screw-Skt hd 10-24 x 7/8	1
55	100003	Washer-#10	1
56	69772	Spacer-Fuel tank	1
57	110910	Screw-Hx hd 10-24 x 1-3/8	1
58		Fuel Tank Asy (Fig 5)	
59	84082	Gasket-Fuel tank	1
60	84079	Insulator-Fuel tank	1
61	84082	Gasket-Insulator	1
62	110566	Screw-Hx hd 10-24 x 5/8	1
63	68508	Plate-Lock	1
64	85007	Brace-Handle	1
65	85731A	Shroud	1
66*	67838	Screw-Muffler long	2
67*	67837	Screw-Muffler short	1
68*	83993	Plate-Lock	1
69*	89428A	Muffler Asy	1
70*	110662	. Screw-Pan hd 6-32 x 3/8	2
71*	89432A	. Cover-Screen	1
72	110910	Screw-Hx hd 10-24 x 1-3/8 (E)	2
73	83966	Cover Asy-Muffler (E)	1
74	110928	Screw-Hx hd 10-24 x 1/2 (E)	1
75	85152	Baffle (E)	1
76	68187	Screw-Special (E)	1
77	110529	Screw-Hx hd 10-24 x 1/2 (E)	1
78	67922	Lockplate (E)	1
79	83105	Body-Muffler (E)	1
80	84007	Gasket-Muffler	1
81		Powerhead Asy (Fig 6)	

*Used on models with model number suffix letter A,B,C,K,U.

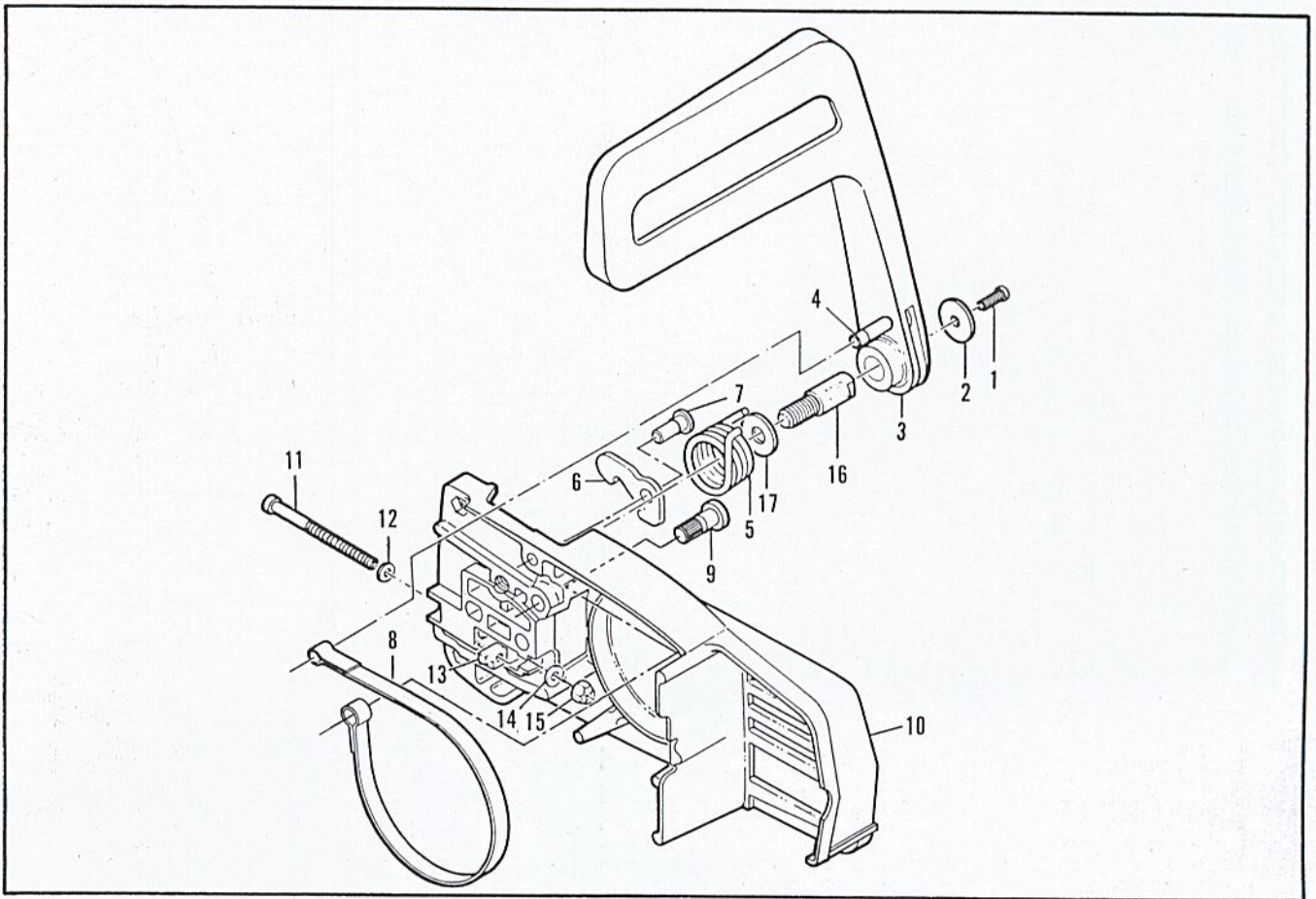


Figure 2. CHAIN BRAKE Assembly

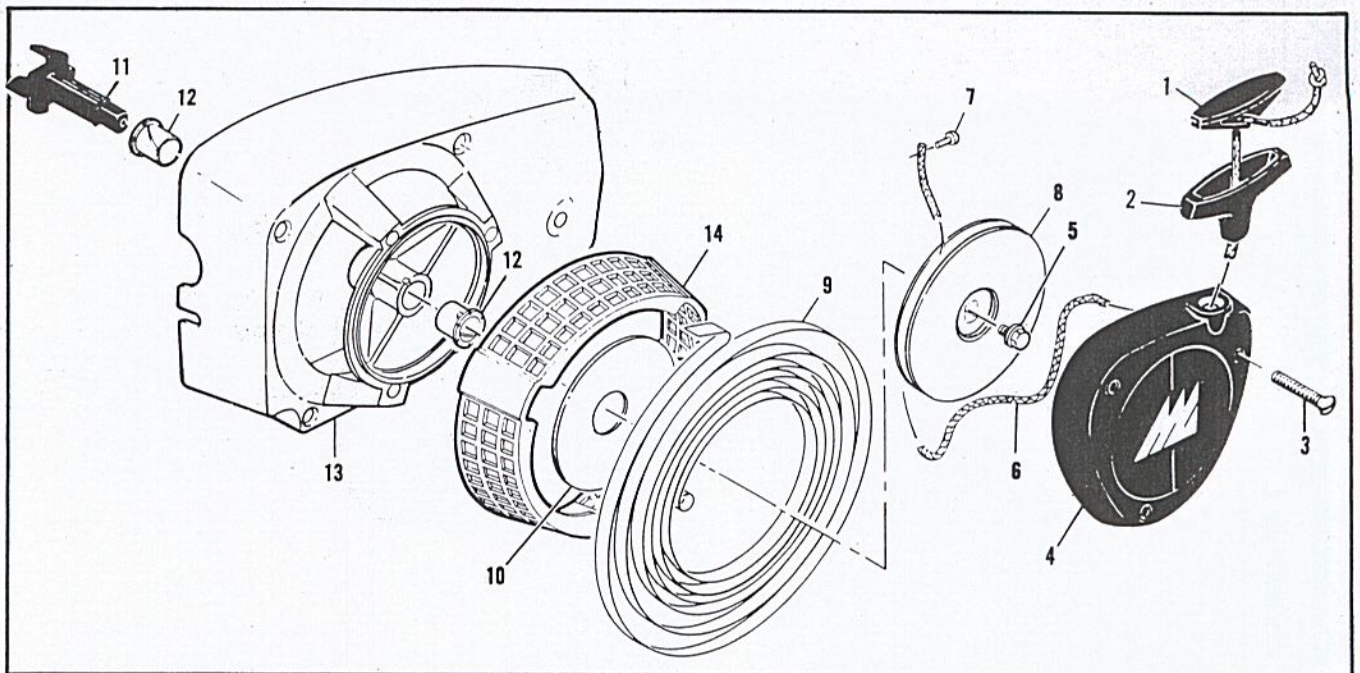


Figure 3. Fan Housing & Starter Assemblies

Figure 2. CHAIN BRAKE Assembly

Item No.	Part Number	Description	Units Per Asy.
	93049	CHAIN BRAKE Asy (A,B,C,K,U)	
	92988	CHAIN BRAKE Asy (E)	
1	102500	. Screw-Pan hd 10-24 x 1/2	1
2	91273	. Washer-Special	1
3	93076	. Lever Asy	1
4	93077	. . Pin Asy-Roller	1
5	93085	. Spring-Brake	1
6	93083	. Latch	1
7	93669	. Pivot-Latch	1
8	93081	. Band-Brake	1

Item No.	Part Number	Description	Units Per Asy.
9	93082	. Pin-Band Anchor	1
10	93050	. Housing Asy-Brake (A,B,C,K,U)	1
(10)	92987	. Housing Asy-Brake (E)	1
11	110527	. . Screw-Fil hd 10-24 x 2-3/4	1
12	110264	. . Washer-#10	1
13	61705	. . Nut-Bar adjusting	1
14	100002	. . Washer-#10	1
15	102067	. . Nut-Hx 10-24	1
16	91245	. . Pin-Lever pivot	1
17	91246	. . Washer-Thrust	1

Figure 3. Fan Housing & Starter Assemblies

Item No.	Part Number	Description	Units Per Asy.
	87667	Fan Housing & Starter Asy	1
1	62191A	. Insert-Starter	1
2	93137	. Handle-Starter	1
3	110646	. Screw-Oval hd 8-32 x 1-1/8	3
4	87672	. Cover-Starter	1
5	110341	. Screw-Hx hd 10-24 x 1/2	1
6	68162	. Rope-Starter	1

Item No.	Part Number	Description	Units Per Asy.
7	110470	. Rivet-Rope	1
8	85122	. Drum-Starter	1
9	87680	. Spring-Rewind	1
10	86053	. Shield-Spring	1
11	83748	. Shaft-Starter	1
12	57535	. Bushing-Starter	2
13	87693	. Kit-Fan Housing	1
14	87674	. . Guard-Sawdust	1

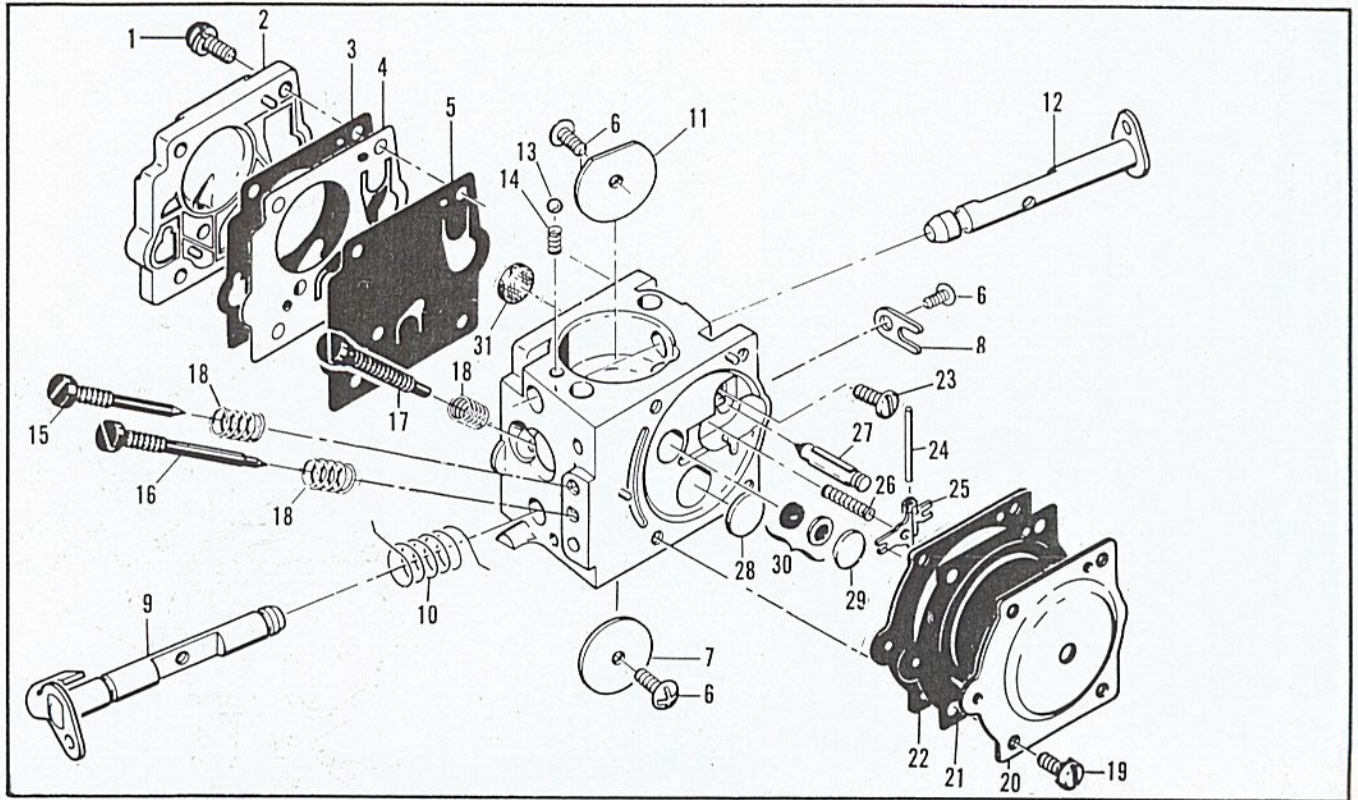


Figure 4. Carburetor Assembly

Figure 4. Carburetor Assembly

Item No.	Part Number	Description	Units Per Asy.
	92654	Carburetor-Walbro SDC 65	1
1	67501	. Screw - Pump cover	4
2	83760	. Cover - Pump	1
3	67495	. Gasket - Cover	1
4	67498	. Diaphragm - Check valve	1
5	83114	. Diaphragm - Fuel pump	1
6	47690	. Screw - Plate	3
7	83762	. Plate - Throttle	1
8	67489	. Clip - Shaft	1
9	67486	. Shaft Asy - Throttle	1
10	85981	. Spring - Throttle shaft	1
11	67490	. Plate - Choke	1
12	67488	. Shaft Asy - Choke	1
13	100302	. Ball - Choke friction	1
14	67504	. Spring - Choke friction	1
15	92937	. Needle - High speed	1
16	92924	. Needle - Idle	1

Item No.	Part Number	Description	Units Per Asy.
17	68106	. Screw - Idle speed	1
18	67502	. Spring - Needle	3
19	70798	. Screw - Diaphragm cover	4
20	83761	. Cover - Diaphragm	1
21	67499	. Diaphragm - Metering	1
22	67496	. Gasket - Diaphragm	1
23	67500	. Screw - Lever pin	1
24	67508	. Pin - Lever	1
25	67509	. Lever - Metering	1
26	67503	. Spring - Lever	1
27	67491	. Valve - Needle	1
28	71690	. Plug - 3/8	1
29	69506	. Plug - 5/16	1
30	83758	. Kit - Valve & Seat Asy	1
31	67507	. Screen - Fuel	1
	67482	Gasket Set	1

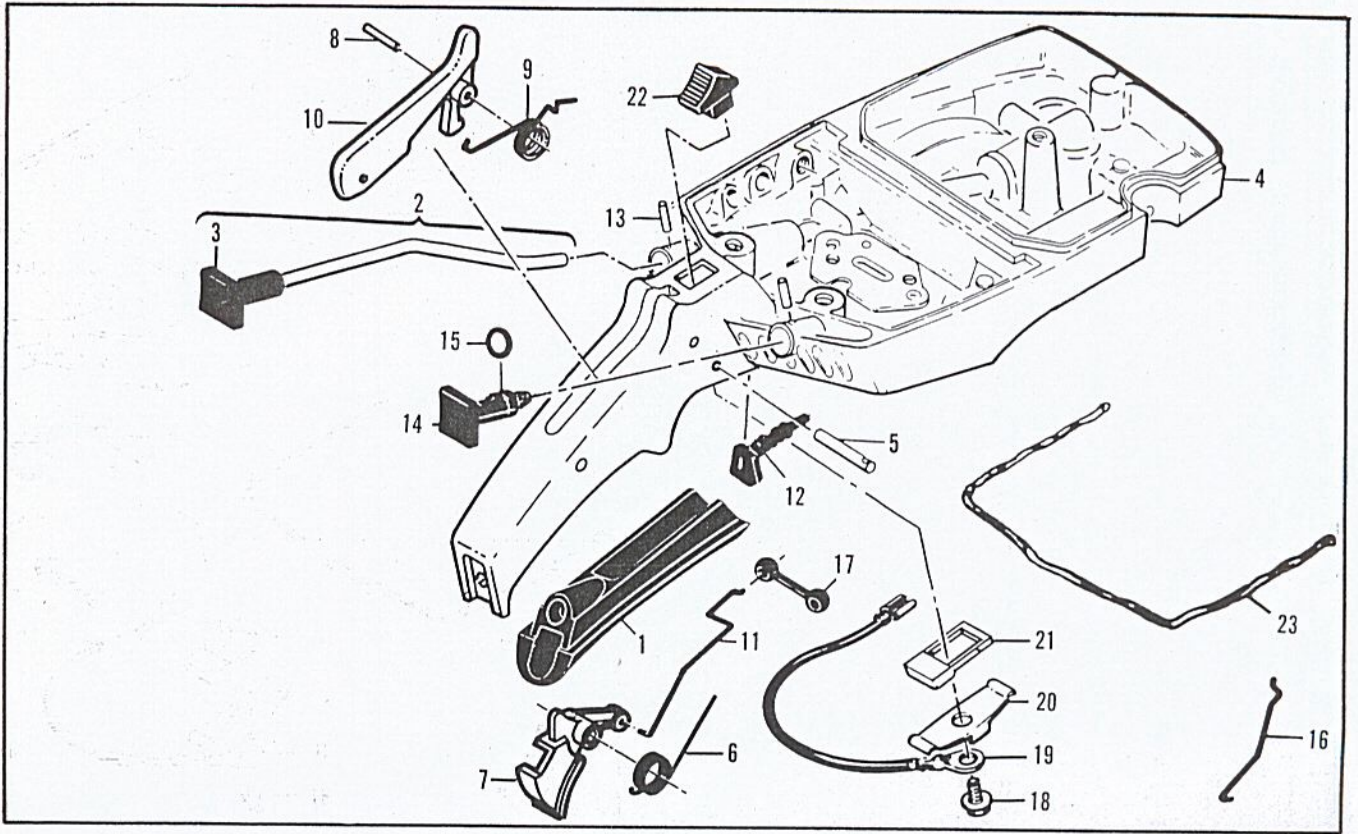


Figure 5. Fuel Tank Assembly

Figure 5. Fuel Tank Assembly

Item No.	Part Number	Description	Units Per Asy.
1	89320	Insert-Handle grip	1
2	64871	Button & Rod Assembly	1
3	63044	. Button-Oiler	1
4	84183A	Kit-Fuel tank/control	1
5	110378	. Pin-Roll 3/16 x 15/16	1
6	92152	. Spring-Trigger	1
7	92151	. Trigger-Throttle	1
8	105654	. Pin-Roll 1/8 x 7/8	1
9	92154	. Spring-Trigger release	1
10	92153A	. Release-Trigger	1
11	85107	Rod-Throttle	1

Item No.	Part Number	Description	Units Per A sy.
12	68522A	Seal-Throttle rod	1
13	105673	Pin-Roll 3/32 x 9/16	2
14	69041	Button-Choke	1
15	105614	"O" Ring	1
16	69042	Rod-Choke	1
17	69043	Snubber-Rod	1
18	110706	Screw-Fil hd 8-18 x 1/2	1
19	62973A	Wire Asy-Stop switch	1
20	62451	Control-Switch	1
21	62950A	Base-Switch	1
22	68846	Button-Switch	1
23	69564	① Seal-Airbox	1

① Furnished on a 12-1/2 inch strip containing 9 beads (enough for 9 replacements).

Accessories

Item No.	Part Number	Description	Units Per Asy.
91090		Bar-16" Sprocket Nose	
88166N		Chain Asy-16" PM370G	
92895		Case-Carrying	
92896		Guard-Bar 16"	
69210		Piston Asy-.020 in. oversize	
62813		. Ring Set-Piston .020 in. oversize	
69211		Piston Asy-.030 in. oversize	
62812		. Ring Set-Piston .030 in. oversize	

Item No.	Part Number	Description	Units Per Asy.
86419		Guide-Timing	
69191		Kit-Pressure Test Adaptor	
84453		Kit-Piston Tool	
63746		Wrench	
89431		Kit-Spark Arrester Screen	
63097		Spark Plug (Standard)	
63432		Spark Plug (Cooler)	
91967		Kit-Spike	
102388		. Screw-Hx hd 10-24 x 5/8	
24236		. Washer Special	
101191		. Nut-Hx 10-24	

Service Specifications

Spark Plug Gap	.025 inch (.63 mm)
Lamination Gap	.010 to .012 inch (.25 to .30 mm)
Breaker Point Gap	.019 to .020 inch (.48 to .51 mm)
Timing	26° BTDC
Clutch Engagement Speed	2800 to 3000 R.P.M.
Torques	Connecting Rod Screws: 65 to 70 pound x inches (8.5 to 9.2 N.m)
	Clutch Nut: 160 to 170 pound x inches (18 to 19 N.m)
	Flywheel Nut: 265 to 325 pound x inches (30 to 37 N.m)

PRO MAC 10-10

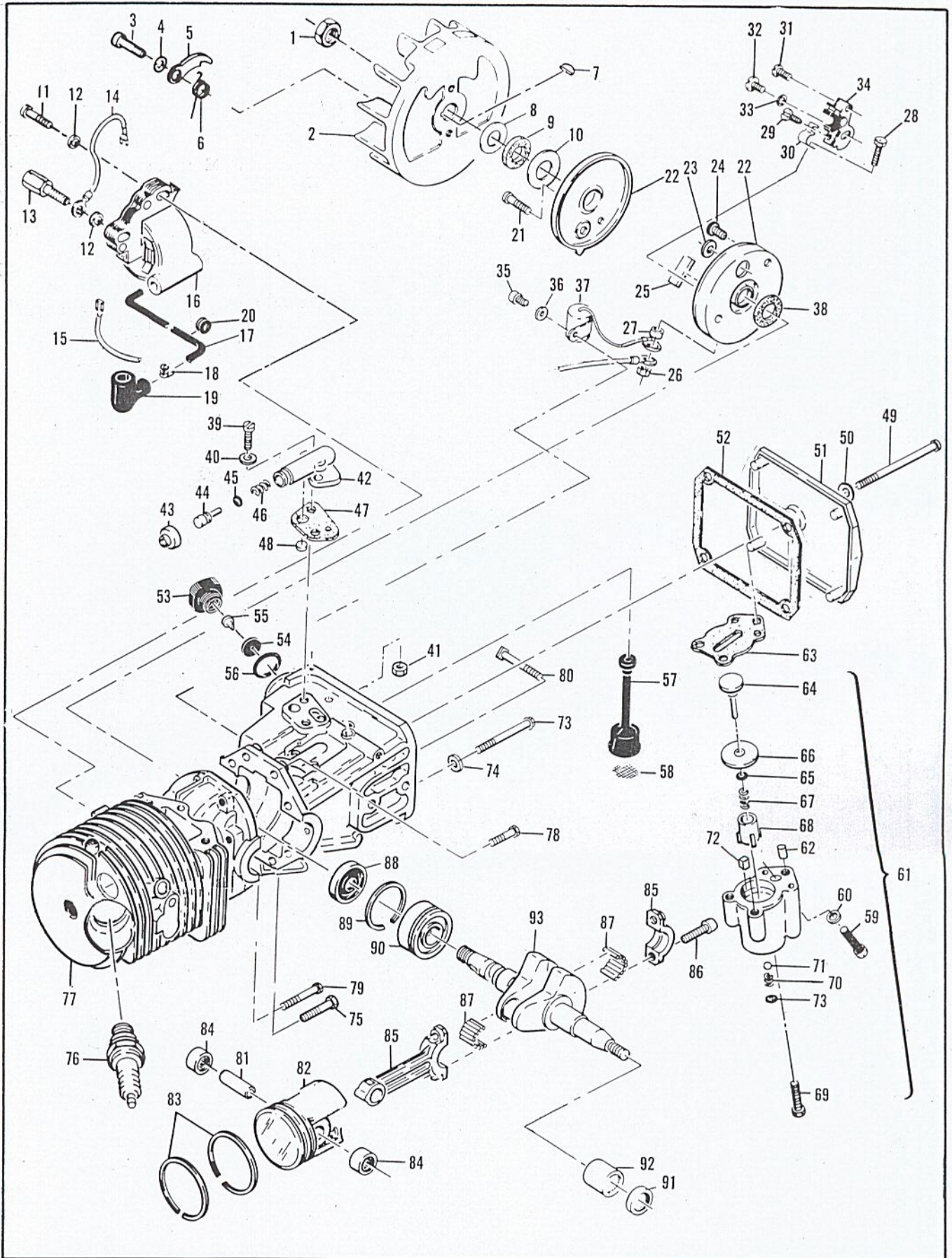


Figure 6. Powerhead Assembly

Figure 6. Powerhead Assembly

Item No.	Part Number	Description	Units Per Asy.	Item No.	Part Number	Description	Units Per Asy.
1	110703	Nut-Hx 3/8-24	1	48	91668	Valve-Pump	1
2	86068	Flywheel	1	49	110291	Screw-Pan hd 10-24 x 2-5/8	1
3	88804	Screw-Pawl pivot	2	50	110921	Washer-Sealing	1
4	83241	Washer-Special	2	51	86304	Cover-Oil tank	1
5	67546	Pawl-Starter	2	52	86306	Gasket-Cover	1
6	67545	Spring-Pawl	2	53	87270	Cap-Oil tank	1
7	100106	Key-Woodruff	1	54	87269	Retainer-Valve	1
8	67057	Washer-Thrust	1	55	86402	Valve-Check	1
9	67056	Seal-Breaker box cover	1	56	101148	"O" Ring	1
10	67054	Washer-Thrust	1	57	91672	Hose Asy-Oil	1
11	110127	Screw-Hx hd 10-24 x 7/8 (SEMS)	1	58	51506	. Screen-Hose	1
12	100002	Washer-#10	2	59	110865	Screw-Hx hd 10-24 x 7/8	1
13	83512	Stud-Special	1	60	100003	Washer-#10	1
14	84686	Wire Asy-Ground	1	61	89115B	Pump Asy-Pulse	1
15	69344	Wire Asy-Primary	1	62	91774	. Sleeve	1
16	87246A	Coil & Lamination Asy	1	63	92818	. Seal-Pulse pump	1
17	50120	. Wire Asy-Spark plug	1	64	60260A	. Piston Asy-Pump	1
18	55061	. . Connector	1	65	105603	. "O" Ring	1
19	85758	. . Boot	1	66	86182	. Ring-Piston	1
20	100268	. Grommet	1	67	60259	. Spring-Piston	1
21	110584	Screw-Pan hd 8-32 x 3/4	1	68	62227	. Sleeve-Adjustment	1
22	91852	Kit-Breaker Box & Cover	1	69	110386	. Screw-Hx hd 8-32 x 1	1
23	91838	. Washer	1	70	92844	. Spring-Outlet valve	1
24	110489	. Screw-Pan hd 6-32 x 7/16	1	71	102809	. Ball	1
25	54184	Wiper-Cam	1	72	91259	. Pad-Pump	1
26	100298	Nut-Hx 6-32	1	73	62105	Screw Asy-Sealing	4
27	62365	Spacer-Breaker	1	74	62842	. Washer-Sealing	4
28	110346	Screw-Hx hd 6-32 x 3/4	1	75	110288	Screw-Hx hd 8-32 x 3/4	1
29	110706	Screw-Pan hd 8-18 x 1/2	1	76	63097	Spark Plug (A,B,C,K,U)	1
30	83126	Strap-Conduction	1	(76)	93018	Spark Plug (E)	1
31	110811	Screw-Pan hd 8-32 x 3/8	1	77	84113A	Cyl/C'Case Asy	1
32	110969	Screw-Hx hd 8-32 x 1/2	1	78	110288	. Screw-Hx hd 8-32 x 3/4	2
33	105976	Washer-#8	1	79	110618	. Screw-Hx hd 8-32 x 1-3/8	1
34	88808	Breaker Asy	1	80	62065	. Bolt-Bar mounting	2
35	110338	Screw-Fil hd 8-32 x 1/2	1	81	61649	Pin-Piston	1
36	100080	Washer-#8	1	82	69212	Piston Asy	1
37	85358	Condenser	1	83	62814	. Ring Set-Piston	1
38	67051	Seal-Breaker box	1	84	103085	. Bearing-Needle	2
39	110338	Screw-Fil hd 8-32 x 1/2	2	85	65401	Connecting Rod Asy	1
40	110613	Washer-#8	2	86	61627A	. Screw-Skt hd Special	2
41	100955	Nut-Hx 8-32	1	87	63225	. Roller-Needle (Set of 20)	1
42	84156	Housing-Pump	1	88	67906	Seal-Oil	1
43	62262	Cap-Housing	1	89	63464	Ring-Snap	1
44	62266	Plunger-Pump	1	90	67905	Bearing-Ball	1
45	105614	"O" Ring	1	91	110260	Seal-Oil	1
46	66687	Spring-Pump	1	92	104357	Bearing-Needle	1
47	91669	Gasket-Pump	1	93	87699	Crankshaft	1