

| FIG. & ITEM | PART NUMBER | NOMENCLATURE | FIG. & | PART NUMBER | NOMENCLATURE | FIG. & ITEM | PART NUMBER | NOMENCLATURE |
|-------------|-------------|--------------|--------|-------------|--------------|-------------|-------------|--------------|
| 6-47 | 63225 | Roller | 7-4 | 55690B | Seal | 7-21 | 62923A | Spring |
| 6-48 | 61618 | Seal | 7-5 | 65868 | Set | 7-22 | 63038 | Valve |
| 6-49 | 63464 | Ring | 7-6 | 66153 | Seat | 7-23 | 65445 | Needle |
| 6-50 | 63429B | Bearing | 7-7 | 61151 | Ball | 7-24 | 104001 | "O" Ring |
| 6-51 | 110260 | Seal | 7-8 | 63041 (1) | Valve | 7-25 | 110483 | Screw |
| 6-52 | 104357 | Bearing | 7-9 | 104814 | Screw | 7-26 | 104814 | Screw |
| 6-53 | 63336 | Crankshaft | 7-10 | 62290A | Plate | 7-27 | 65430 | Lever |
| 6-54 | 64755 | Valve | 7-11 | 65677 | Retainer | 7-28 | 65431 | Needle |
| 6-55 | | Bar | 7-12 | 65617 | Plug | 7-29 | 62975 | Swivel |
| 6-56 | 64325 | Plate | 7-13 | 105617 | "O" Ring | 7-30 | 65428 | Shaft |
| 6-57 | | Chain Assy | 7-14 | 101289 | Ring | 7-31 | 66504 | Body |
| | | | 7-15 | 65859 | Spring | 7-32 | 65432 | Orifice |
| | | | 7-16 | 66552 | Plunger | 7-33 | 63813 | Orifice |
| 7- | 66503 ⑦ | Carburetor | 7-17 | 66551 | "O" Ring | 7-34 | 59796 | "O" Ring |
| 7-1 | 110397 | Screw | 7-18 | 104728 | Screw | 7-35 | 65724 | Stud |
| 7-2 | 65597 | Plate | 7-19 | 110337 | Pin | 7-36 | 62368 | Bushing |
| 7-3 | 65598 | Diaphragm | 7-20 | 62310 | Lever | 7-37 | 62435 | Seal |

Continued

| Item No. | Description | Units Per Assy | Item No. | Description | Units Per Assy |
|----------|------------------------------|----------------|----------|------------------------------|----------------|
| ⑦ | Carburetor Assembly | 1 | 36 | . . Bushing - Throttle shaft | 2 |
| 1 | . Screw - Pan hd 8-32 x 7/16 | 5 | 37 | Seal - Air cleaner | 1 |
| 2 | . Plate - Carburetor base | 1 | | | |
| 3 | . Diaphragm | 1 | | | |
| 4 | . Seal - Capillary | 1 | | | |
| 5 | . Set - Ball and seat | 1 | | | |
| 6 | . . Seat | 1 | | | |
| 7 | . . Ball | 1 | | | |
| 8 | . Valve - Primer | 1 | | | |
| 9 | . Screw - 4-40 x 1/4 (Sems) | 1 | | | |
| 10 | . Plate - Throttle | 1 | | | |
| 11 | . Retainer - Primer plug | 1 | | | |
| 12 | . Plug - Primer | 1 | | | |
| 13 | . "O" Ring | 1 | | | |
| 14 | . Ring - Retaining | 1 | | | |
| 15 | . Spring - Plunger | 1 | | | |
| 16 | . Plunger - Primer | 1 | | | |
| 17 | . "O" Ring | 2 | | | |
| 18 | . Screw - 6-32 x 1/4 | 1 | | | |
| 19 | . Pin - Inlet lever | 1 | | | |
| 20 | . Lever - Inlet | 1 | | | |
| 21 | . Spring - Inlet lever | 1 | | | |
| 22 | . Valve - Needle | 1 | | | |
| 23 | . Needle - Main fuel | 1 | | | |
| 24 | . "O" Ring | 1 | | | |
| 25 | . Screw - Adjustment | 1 | | | |
| 26 | . Screw - 4-40 x 1/4 (Sems) | 1 | | | |
| 27 | . Lever - Throttle | 1 | | | |
| 28 | . Needle - Metering | 1 | | | |
| 29 | . Swivel - Needle | 1 | | | |
| 30 | . Shaft Assy - Carburetor | 1 | | | |
| 31 | . Body Assy - Carburetor | 1 | | | |
| 32 | . . Orifice - Air | 1 | | | |
| 33 | . . Orifice - Fuel | 1 | | | |
| 34 | . . "O" Ring | 1 | | | |
| 35 | . . Stud - Carburetor | 1 | | | |

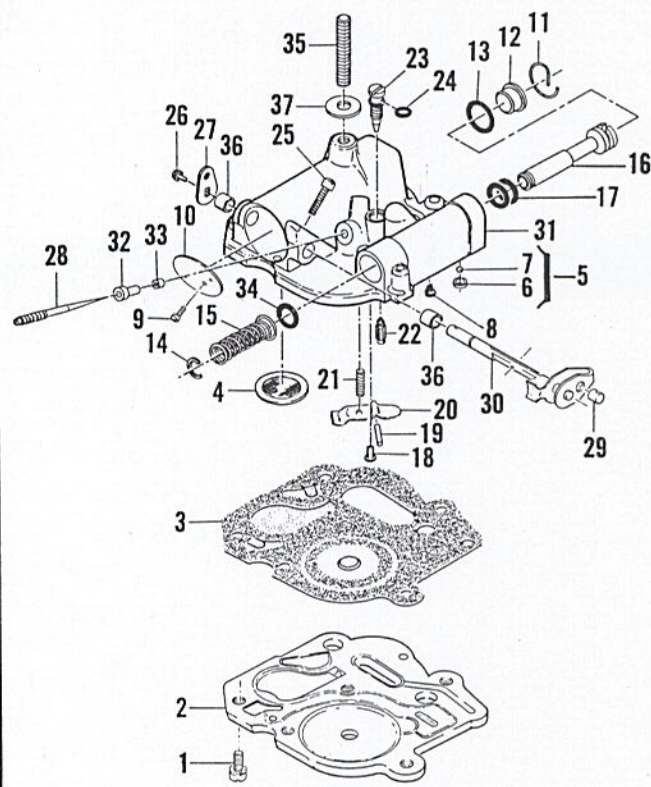


Figure 7. Carburetor

| FIG. & ITEM | PART NUMBER | NOMENCLATURE | FIG. & ITEM | PART NUMBER | NOMENCLATURE | FIG. & ITEM | PART NUMBER | NOMENCLATURE |
|-------------|------------------------|--------------|-------------|-------------|----------------|-------------|-----------------|--------------|
| | <i>ACCESSORY ITEMS</i> | | 5 | 62813 | Ring Set | 11 | 65325 | Baffle |
| | | | 6 | 103512 | Bearing | 12 | 64330 20 | Plate Set |
| 1 | 66285 | Manual | 7 | 62826 | Piston Assy | 13 | 65712 21 | Timing Guide |
| 2 | 62827 | Wrench | 8 | 62812 | Ring Set | 14 | 66086 22 | Charger |
| 3 | 63341A | Spike | 9 | 103512 | Bearing | 15 | 66316 23 | Frame Kit |
| 4 | 62825 | Piston Assy | 10 | 65529 | Reed Spark Arr | 16 | 65778 24 | Spark Plug |

NOTES

20 Set - Bar protector plates

21 Timing Guide

22 Battery Charger Assembly

23 Kit - Wrap-around Frame

24 Spark Plug, AC CS 41T



McCULLOCH CORPORATION
6101 WEST CENTURY BLVD., LOS ANGELES, CALIFORNIA 90045

McCULLOCH OF CANADA, LTD.
77 BELFIELD ROAD, REXDALE, ONTARIO, CANADA

McCULLOCH INTERNATIONAL, INC.
POSTBUS 10, MALINES, BELGIUM
G. P. O. BOX 879, HONG KONG, B. C. C.

McCULLOCH OF AUSTRALIA PTY., LTD.
P. O. BOX 165, SOUTH GRANVILLE, N. S. W., AUSTRALIA

McCULLOCH INTERNATIONAL (U.S.), INC.
P. O. BOX 45466 LOS ANGELES, CALIFORNIA, U.S.A.

66740