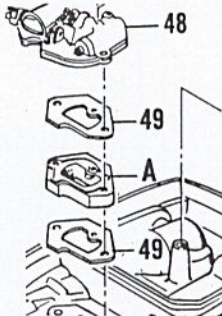


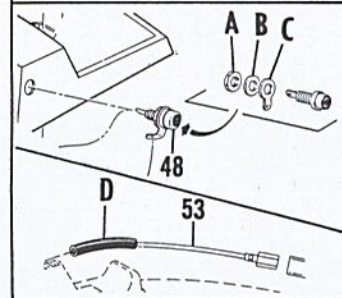
Figure and Item numbers are referenced to the MAC 3-10E Illustrated Parts List, P/N 65328 unless otherwise indicated on this parts list sheet. Numbers in black circles refer to notes at the bottom of the page. Numbers in parenthesis following the part number indicate a quantity change from the illustrated parts list.

MAC 3-10E

Serial Numbers Prefixed 1-

FIG & ITEM	PART NUMBER	FIG & ITEM	PART NUMBER	FIG & ITEM	PART NUMBER	FIG & ITEM	PART NUMBER
1-1	110454	1-51	110423	3-5	64871		
1-2	100440	1-52	64856	3-6	61696		
1-3	Fig. reference	1-53	55636	3-7	110378		
1-4	Fig. reference	1-54	Fig. reference	3-8	65734		
1-5	102761	1-55	62995A	3-9	65864		
1-6	100352	1-56	63396	3-10	65816		
1-7	61678	1-57	110482	3-11	110449		
1-8	101326	1-58	102433	3-12	64621		
1-9	105187	1-59	28052	3-13	64721		
1-10	100004	1-60	Fig. reference	3-14	64650		
1-11	64627	1-61	104534	3-15	65949		
1-12	103746	1-62	104895	3-16	110469		
1-13	65471	1-63	110264	3-17	65873		
1-14	64583	1-64	63748	3-18	65861		
1-15	63999	1-65	110341				
1-16	62198B	1-66	64846	4-	65424 ③		
1-17	65475	1-67	103360	5-1	101391		
1-18	62328	1-68	110264	5-2	65995		
1-19	65472	1-69	62380	5-3	100690		
1-20	64857	1-70	62379B	5-4	105976		
1-21	65473	1-71	64601	5-5	65515		
1-22	65370	1-72	62085A	5-6	110445		
1-23	65368	1-73	101230	5-7	105976		
1-24	110330	1-74	65503	5-8	100934		
1-25	61692	1-75	Fig. reference	5-9	63875		
1-26	103879	2-	65530	5-10	54184		
1-27	65866	2-1	102144	5-11	65414		
1-28	65813	2-2	102067	5-12	64624		
1-29	65460	2-3	110387	5-13	110446		
1-30	65815	2-4	61705	5-14	100003		
1-31	64626	2-5	101174	5-15	65996		
1-32	64508	2-6	62371	5-16	66005		
1-33	61721D	2-7	63985	5-17	105464		
1-34	64762	2-8	63986	5-18	66004		
1-35	63040	2-9	65526	5-19	66002		
1-36	62316	2-10	110470	5-20	66001		
1-37	63041	2-11	62191A	5-21	65997		
1-38	61722C	2-12	62190A	5-22	65998		
1-39	110334	2-13	59952A	5-23	65999		
1-40	63656	2-14	36059	5-24	66003		
1-41	62102	2-15	63987	5-25	66006		
1-42	64848	2-16	61635A	5-26	66007		
1-43	63932	2-17	65519	5-27	66008		
1-44	103124 ①	3-1	65779	5-28	66009		
1-45	64856	3-2	64872	5-29	103879		
1-46	55636	3-3	105673	5-30	64609		
1-47	65726	3-4	63045	5-31	110450		
1-48	Fig. reference			5-32	100003		
1-49	62080B (2)						
1-A	65821 ②						
1-50	65604						

Changes in Figure 1.



Changes in Figure 5.

5-33	65517
5-34	65518
5-35	62819
5-36	64653
5-37	51253
5-38	62741
5-39	64619
5-40	64622
5-41	62932
5-42	62926
5-43	110480
5-44	65304
5-45	65305
5-46	65319
5-47	65470
5-48	65567
5-A	65875 ④
5-B	65876 ⑤
5-C	65877 ⑥
5-49	100403
5-50	65714

Continued

NOTES

- ① Screw - Hex hd 10-24 x 2 2 Req.
- ② Insulator - Carburetor 1 Req.
See changes in Figure 1 in upper right corner of this page

- ③ New Carburetor Assembly - See page 2 of this Parts List Sheet.
- Notes ④, ⑤, and ⑥ see page 2. Figure 5 drawing above.

FIG & ITEM	PART NUMBER	FIG & ITEM	PART NUMBER	FIG & ITEM	PART NUMBER	FIG & ITEM	PART NUMBER
5-51	65501	6-1	63097	6-20	62320C	6-39	110288
5-52	65545	6-2	100414	6-21	60260A	6-40	100010
5-53	65541	6-3	100955	6-22	101758	6-41	61649
5-D	80975 ⑦	6-4	62319A	6-23	60263	6-42	62824
5-54	65306	6-5	62262	6-24	60937	6-43	62814
5-55	110462	6-6	62266	6-25	60259	6-44	103512
5-56	64874	6-7	101056	6-26	62227	6-45	65401
5-57	110463	6-8	59934	6-27	110386	6-46	61627A
5-58	64873	6-9	62230	6-28	100251	6-47	63225
5-59	110451	6-10	62909	6-29	63858	6-48	61618
5-60	64681	6-11	110291	6-30	103195	6-49	63464
5-61	64733	6-12	63072	6-31	62885A	6-50	63429B
5-62	64727	6-13	62116	6-32	102809	6-51	110260
5-63	65512	6-14	57129A	6-33	62321B	6-52	104357
5-64	64734	6-15	101148	6-34	62065	6-53	63336
5-65	101230	6-16	62123B	6-35	65775	6-54	64755
5-66	64638	6-17	51506	6-36	62105	6-55	Bar
		6-18	110333	6-37	62842		
		6-19	62274	6-38	110289		

Continued

NOTES

- ④ Nut - Phonojack 1 Req.
- ⑤ Washer - Phonojack 1 Req.
- ⑥ Terminal - Phonojack 1 Req.
- ⑦ Sleeve - Wire Assembly 1 Req.

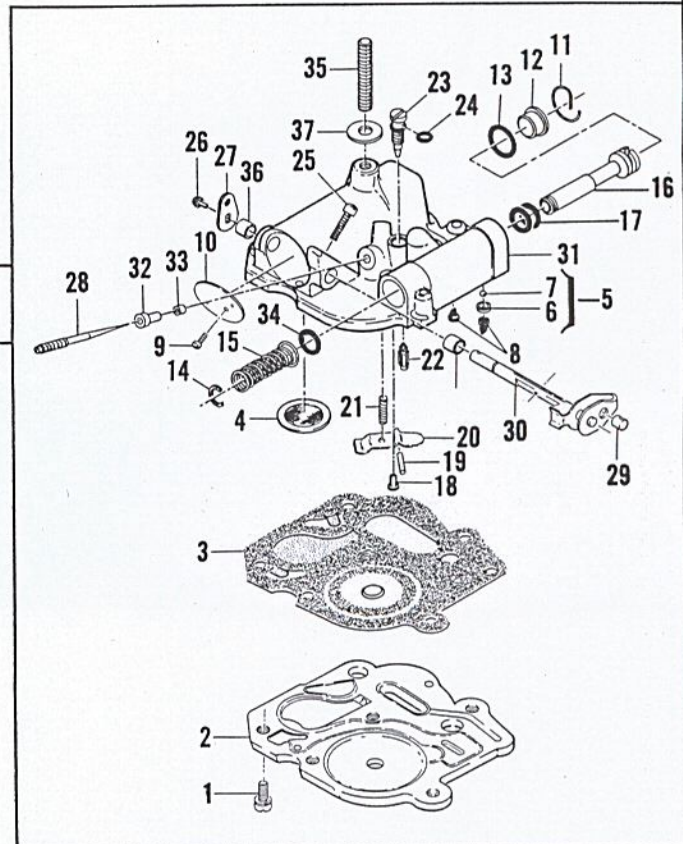


Figure 7. Carburetor

Item No.	Description	Units Per Assy
③ 1	Carburetor Assembly	1
2	. Screw - Pan hd 8-32 x 7/16	5
3	. Plate - Carburetor base	1
4	. Seal - Capillary	1
5	. Set - Ball and seat	1
6	. . Seat	1
7	. . Ball	1
8	. Valve - Primer	2
9	. Screw - 4-40 x 1/4 (SEMS)	1
10	. Plate - Throttle	1
11	. Retainer - Primer plug	1
12	. Plug - Primer	1
13	. "O" Ring	1
14	. Ring - Retaining	1
15	. Spring - Plunger	1
16	. Plunger - Primer	1
17	. "O" Ring	2
18	. Screw - 6-32 x 1/4	1
19	. Pin - Inlet lever	1
20	. Lever - Inlet	1
21	. Spring - Inlet lever	1
22	. Valve - Needle	1
23	. Needle - Main fuel	1
24	. "O" Ring	1
25	. Screw - Adjustment	1
26	. Screw - 4-40 x 1/4 (SEMS)	1
27	. Lever - Throttle	1
28	. Needle - Metering	1
29	. Swivel - Needle	1
30	. Shaft Assy - Carburetor	1
31	. Body Assy - Carburetor	1

Item No.	Description	Units Per Assy
32	. . Orifice - Air	1
33	. . Orifice - Fuel	1
34	. . "O" Ring	1
35	. . Stud - Carburetor	1
36	. . Bushing - Throttle shaft	2
37	Seal - Air cleaner	1

FIG & ITEM	PART NUMBER	FIG & ITEM	PART NUMBER	FIG & ITEM	PART NUMBER	FIG & ITEM	PART NUMBER		
6-56	64325	7-10	62290A	7-24	104001	<i>ACCESSORY ITEMS</i>			
6-57	Chain Assy	7-11	65677	7-25	110483				
Figure 7. Carburetor ③		7-12	65617	7-26	104814				
7-	65424	7-13	105617	7-27	65430			1	65698
7-1	110397	7-14	101289	7-28	65431			2	62827
7-2	65597	7-15	65859	7-29	62975			3	63341A
7-3	65598	7-16	65602	7-30	65428			4	62825
7-4	55690B	7-17	59796	7-31	65425			5	62813
7-5	65868	7-18	104728	7-32	65432			6	103512
7-6	65824	7-19	110337	7-33	63813			7	62826
7-7	61151	7-20	62310	7-34	59796			8	62812
7-8	63041	7-21	62923A	7-35	65724			9	103512
7-9	104814	7-22	63038	7-36	62368			10	65529
		7-23	65445	7-37	62435	11	65325		
						12	64330 ③		

NOTES

③ Set - Bar protector plates 1 Req.



McCULLOCH CORPORATION
6101 WEST CENTURY BLVD., LOS ANGELES, CALIFORNIA 90045

65680

McCULLOCH OF CANADA, LTD.
77 BELFIELD ROAD, REXDALE, ONTARIO, CANADA

McCULLOCH INTERNATIONAL, INC.
POSTBUS 10, MALINES, BELGIUM
G.P.O. BOX 879, HONG KONG, B.C.C.

McCULLOCH OF AUSTRALIA PTY., LTD.
P.O. BOX 165, SOUTH GRANVILLE, N.S.W., AUSTRALIA

McCULLOCH INTERNATIONAL (U.S.), INC.
P.O. BOX 45466 LOS ANGELES, CALIFORNIA, U.S.A.