

Figure and Item numbers are referenced to the Illustrated Parts List, P/N 65327 unless otherwise indicated on this parts list sheet. Numbers in black circles refer to notes at the bottom of the page. Numbers in parenthesis following the part number indicate a quantity change from the illustrated parts list.

MAC 3-10

Serial Numbers Prefixed 2-

FIG. & ITEM	PART NUMBER	NOMENCLATURE	FIG. & ITEM	PART NUMBER	NOMENCLATURE	FIG. & ITEM	PART NUMBER	NOMENCLATURE
1-1	110454	Nut	1-47	Fig. reference				
1-2	100440	Washer	1-48	65672 (2)	Gasket			
1-3	Fig. reference		1-B	65821 (2)	Insulator			
1-4	Fig. reference		1-49	65604	Rod			
1-5	102761	Screw	1-50	102290	Screw			
1-6	100352	Washer	1-51	63475 (3)	Lockplate			
1-7	61678	Plug	1-52	55636	Washer			
1-8	101326	Nut	1-53	Fig. reference				
1-9	105187	Screw	1-54	65674	Washer			
1-10	100004	Washer	1-55	63396	Insulator			
1-11	65404 (1)	Frame	1-56	110353	Screw			
1-A	65396	Plug	1-57	102289	Screw			
1-12	103746	Nut	1-58	100352	Washer			
1-13	65471	Clutch	1-59	63070	Brace			
1-14	64583	Retainer	1-60	104534	Screw			
1-15	63999	Spring	1-61	104895	Screw			
1-16	62198B	Shoe	1-62	110264	Washer			
1-17	65475	Rotor	1-63	63748	Gasket			
1-18	62328	Spring	1-64	110341	Screw			
1-19	65472	Rivet	1-	64846	Spark Arr.			
1-20	64857	Pawl	1-65	103360	Screw			
1-21	65473	Washer	1-66	110264	Washer			
1-	65370	Spkt. Kit	1-67	62380	Cover			
1-22	65368	Sprocket	1-68	62379B	Baffle			
1-23	110330	Bearing	1-69	64601	Body			
1-24	61692	Shim	1-70	62085A	Insulator			
1-25	103879	Key	1-71	65503	Shroud			
1-26	65866	Cover	1-72	Fig. reference				
1-27	65813	Nut	2-	65530	Guard Assy			
1-28	65459	Nameplate	2-1	102144	Screw			
1-29	65815	Screen	2-2	102067	Nut			
1-30	62978	Screw	2-3	110387	Washer			
1-31	63073	Housing	2-4	61705	Nut			
1-32	61721D	Cap Assy	2-5	101174	Washer			
1-33	64762	Cover	2-6	62371	Retainer			
1-34	60340	Spring	2-7	63985	Shield			
1-35	62316	Guide	2-8	63986	Washer			
1-36	63041	Valve	2-9	65526	Drum			
1-37	65671	Gasket	2-10	110470	Rivet			
1-38	110334	Screw	2-11	62191A	Insert			
1-39	63656	Cover	2-12	62190A	Handle			
1-40	62102	Gasket	2-13	59952A	Rope			
1-41	64848	Hose	2-14	36059	Spring			
1-42	63932	Filter	2-15	63987	Shield			
1-43	103124	Screw	2-16	61635A	Bushing			
1-44	64856	Washer	2-17	65519	Guard			
1-45	55636	Washer						
1-46	65726	Sleeve						

Changes in Figure 1

- 3-1 66648 (4) Tank Assy
- 3-A 105788 Rivet
- 3-2 64872 Grip
- 3-3 105673 Pin
- 3-4 66194 Button
- 3-5 64871 Button & Rod
- 3-6 65816 Rod
- 3-7 61696 Seal
- 3-8 110378 Pin
- 3-9 65734 Spring
- 3-10 65864 Trigger
- 3-11 105249 Screw
- 3-12 64621 Shield
- 3-13 64721 Bracket
- 3-14 64650 Spring
- 3-15 66306 Lever
- 3-16 110469 Screw
- 3-17 65873 Wire
- 3-18 65860 Button

- 4- 66503 (5) Carburetor

- 5-1 101391 Nut
- 5-2 61737A Flywheel
- 5-3 103879 Key
- 5-4 101965 Screw
- 5-5 100003 Washer

Continued

NOTES

- (1) Frame assembly includes Plug, P/N 65396.
- (2) Insulator - Carburetor See changes in Figure 1 in upper right corner of this page.
- (3) Lockplate replaces Washer, P/N 64856.
- (4) Tank Assembly includes two Rivets, P/N 105788, which must be removed for installation of the compression release bracket screws. Items 2 to 9 inclusive are not included in this tank assembly.
- (5) New Carburetor Assembly See page 3 of this parts list sheet.

FIG. & ITEM	PART NUMBER	NOMENCLATURE	FIG. & ITEM	PART NUMBER	NOMENCLATURE	FIG. & ITEM	PART NUMBER	NOMENCLATURE
5-6	51253	Retainer	5-62	62842	Washer	7-31	66504	Body
5-7	62741	Lamination	5-63	110289	Screw	7-32	65432	Orifice
5-8	62819	Wire	5-64	110288	Screw	7-33	63813	Orifice
5-9	62818A	Wire	5-65	100010	Cotter	7-34	59796	"O" Ring
5-10	62927A	Coil	5-66	61649	Pin	7-35	65724	Stud
5-11	62929A	Wire	5-67	62824	Piston Assy	7-36	62368	Bushing
5-12	62932	Connector	5-68	62814	Ring Set	7-37	62435	Seal
5-13	62926	Boot	5-69	103512	Bearing			
5-14	63097	Spark Plug	5-70	65401	Conn Rod			
5-15	110349	Screw	5-71	61627A	Screw			
5-16	62362	Cover	5-72	63225	Roller Set			
5-17	100298	Nut	5-73	65746	Seal			
5-18	62365	Spacer	5-74	63464	Ring			
5-19	110346	Screw	5-75	63429B	Bearing			
5-20	100934	Screw	5-76	65747	Seal			
5-21	105976	Washer	5-77	104357	Bearing			
5-22	105249	Screw	5-78	63336	Crankshaft			
5-23	61650	Condenser	5-79	64755	Valve			
5-24	62363	Breaker						
5-25	54184	Wiper						
5-26	62361	Box	6-1		MAC 10 Bar	1	66285	Manual
5-27	100414	Screw	6-2	64325	Plate	2	62827	Wrench
5-28	100955	Nut	6-3		Chain Assy	3	63341A	Spike Kit
5-29	62261A ⑥	Housing				4	62825	Piston Assy
5-30	62262	Cap				5	62813	Ring Set
5-31	62266	Plunger	7-	66503 ⑤	Carburetor	6	103512	Bearing
5-32	101056	"O" Ring	7-1	110397	Screw	7	62826	Piston Assy
5-33	66687	Spring	7-2	65597	Plate	8	62812	Ring Set
5-34	62230	Gasket	7-3	65598	Diaphragm	9	103512	Bearing
5-35	62909	Valve	7-4	55690B	Seal	10	66316	Frame Kit
5-36	110291	Screw	7-5	65868	Valve Set	11	63432	Spark Plug
5-37	63072	Cover	7-6	66153	Seat	12	65325	Baffle
5-38	62116	Gasket	7-7	61151	Ball	13	63746	Scrench
5-39	57129A	Cap	7-8	63041 (1)	Valve	14	64430 ⑦	Plate Set
5-40	101148	"O" Ring	7-9	104814	Screw	15	65529 ⑧	Spark Arr.
5-41	62123B	Hose	7-10	62290A	Plate	16	65712 ⑨	Timing Guide
5-42	51506	Screen	7-11	65677	Retainer	17	65778 ⑩	Spark Plug
5-43	110333	Screw	7-12	65617	Plug			
5-44	62274	Gasket	7-13	105617	"O" Ring			
5-45	62320C	Pump Assy	7-14	101289	Ring			
5-46	60260A	Piston	7-15	65859	Spring			
5-47	101758	"O" Ring	7-16	66552	Plunger			
5-48	60263	Ring	7-17	66551	"O" Ring			
5-49	60937	Washer	7-18	104728	Screw			
5-50	60259	Spring	7-19	110337	Pin			
5-51	62227	Sleeve	7-20	62310	Lever			
5-52	110386	Screw	7-21	62923A	Spring			
5-53	100251	Nut	7-22	63038	Valve			
5-54	63858	Cover	7-23	65445	Needle			
5-55	106104	"O" Ring	7-24	104001	"O" Ring			
5-56	62885A	Spring	7-25	110483	Screw			
5-57	102809	Ball	7-26	104814	Screw			
5-58	62321B	Body	7-27	65430	Lever			
5-59	62065	Bolt	7-28	65431	Needle			
5-60	64885	Crankcase	7-29	62975	Swivel			
5-61	62105	Screw	7-30	65428	Shaft			

ACCESSORY ITEMS

NOTES

- ⑥ Pump housing only. Not furnished as a complete pump assembly.
- ⑦ Set - Bar protector plates
- ⑧ Kit - Reed spark arrester
- ⑨ Timing Guide added to Accessory list
- ⑩ Spark Plug - AC CS 41T, added to Accessory list

Item No.	Description	Units Per Assy
⑤	Carburetor Assy	1
1	. Screw - Pan hd 8-32 x 7/16	5
2	. Plate - Carburetor base	1
3	. Diaphragm Assy - Pump	1
4	. Seal - Capillary	1
5	. Set - Ball and seat	1
6	. . Seat	1
7	. . Ball	1
8	. Valve - Primer	1
9	. Screw - 4-40 x 1/4 (Sems)	1
10	. Plate - Throttle	1
11	. Retainer - Primer plug	1
12	. Plug - Primer	1
13	. "O" Ring	1
14	. Ring - Retaining	1
15	. Spring - Plunger	1
16	. Plunger - Primer	1
17	. "O" Ring	2
18	. Screw - 6-32 x 1/4	1
19	. Pin - Inlet lever	1
20	. Lever - Inlet	1
21	. Spring - Inlet lever	1
22	. Valve - Needle	1
23	. Needle - Main fuel	1
24	. "O" Ring	1
25	. Screw - Adjustment	1
26	. Screw - 4-40 x 1/4 (Sems)	1
27	. Lever - Throttle	1
28	. Needle - Metering	1
29	. Swivel - Needle	1
30	. Shaft Assy - Carburetor	1
31	. Body Assy - Carburetor	1
32	. . Orifice - Air	1
33	. . Orifice - Fuel	1
34	. . "O" Ring	1
35	. . Stud - Carburetor	1
36	. . Bushing - Throttle shaft	2
37	Seal - Air cleaner	1

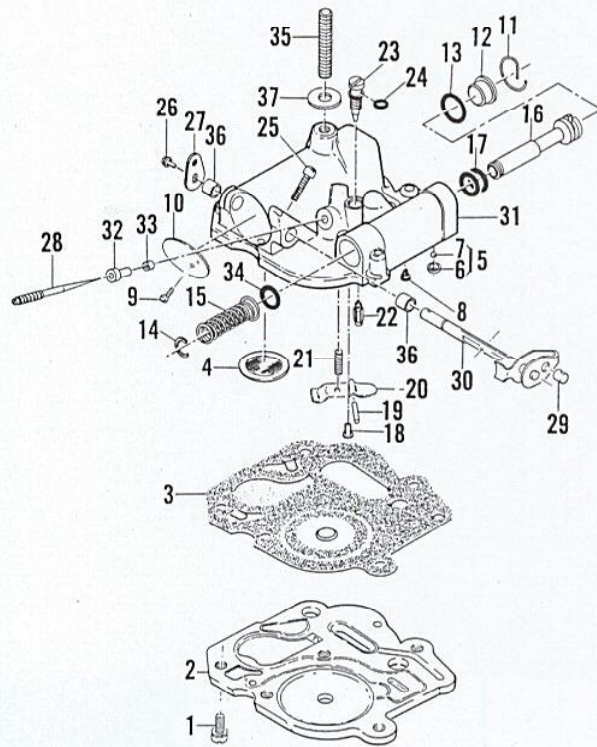


Figure 7. Carburetor



McCULLOCH CORPORATION
6101 WEST CENTURY BLVD., LOS ANGELES, CALIFORNIA 90045

McCULLOCH OF CANADA, LTD.
77 BELFIELD ROAD, REXDALE, ONTARIO, CANADA

McCULLOCH INTERNATIONAL, INC.
POSTBUS 10, MALINES, BELGIUM
G.P.O. BOX 879, HONG KONG, S. C. C.

McCULLOCH OF AUSTRALIA PTY., LTD.
P. O. BOX 165, SOUTH GRANVILLE, N. S. W., AUSTRALIA

McCULLOCH INTERNATIONAL (U.S.), INC.
P. O. BOX 45466 LOS ANGELES, CALIFORNIA, U.S.A.

66725