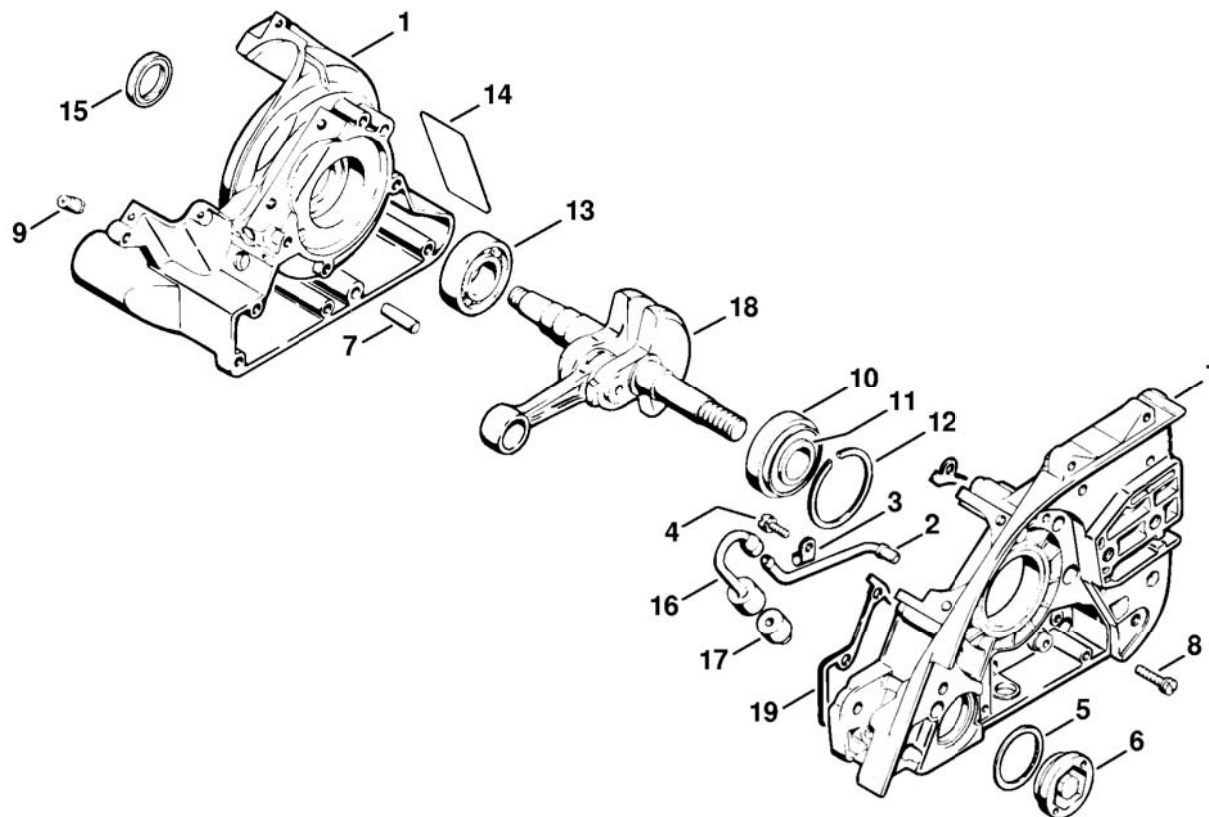


Illustration A Crankcase, Crankshaft

Printed from MediaCat

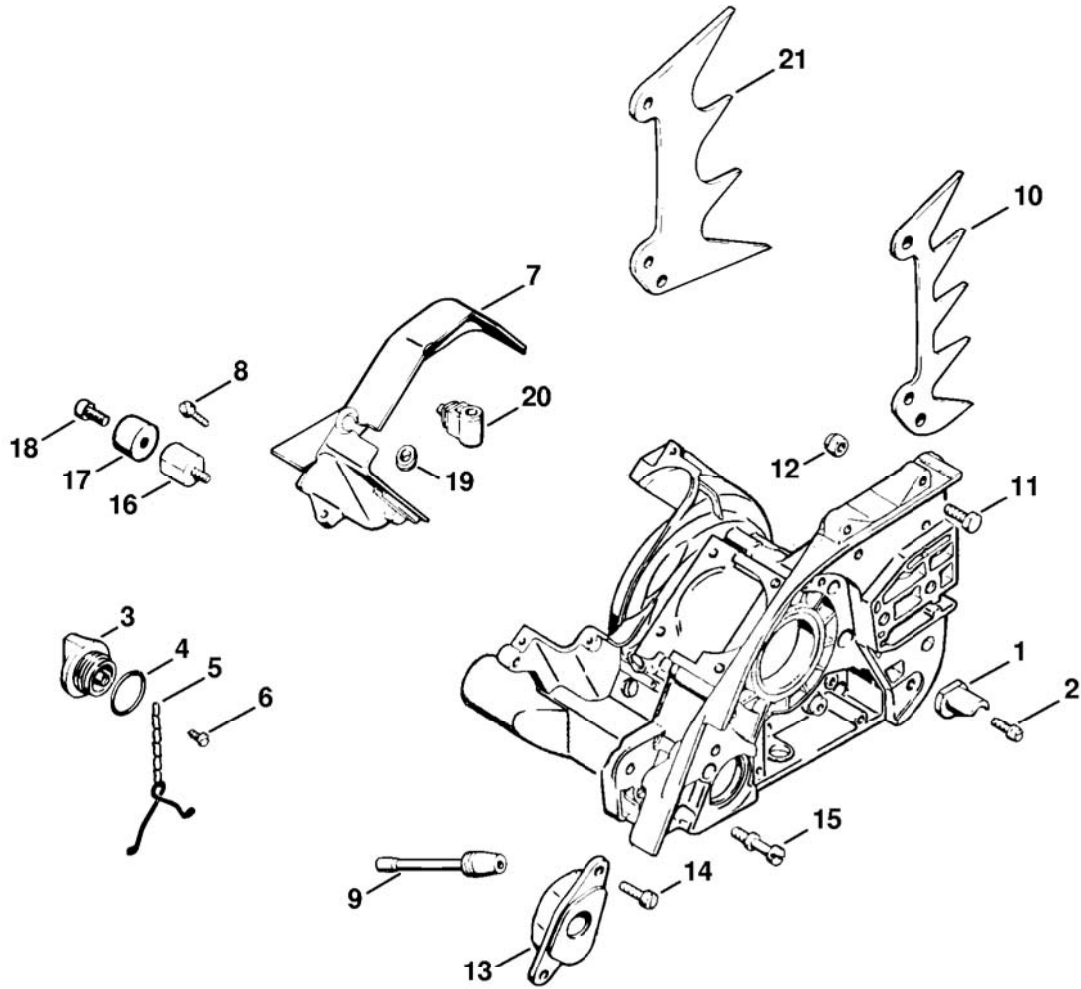


123ET001 SC

# Illustration A Crankcase, Crankshaft

Ref.Nr.	Item code	Quantity	Description
1	1115 020 2113	1	Crankcase (1) □ 2 - 14
1	1115 020 2114	1	Crankcase (2) □ 2 - 14
2	1115 020 8200	1	Pickup tube □ 3
3	9778 021 0600	1	Tube clamp 6
4	9048 319 0660	1	Pan head screw M4x12
5	0000 992 7105	1	Sealing ring
6	1106 351 2200	1	Oil sight glass
7	9371 470 3120	2	Cylindrical pin 6x20
8	9048 216 1010	8	Pan head screw M5x18
9	1128 640 9100	1	Valve
10	9523 003 4460	1	Grooved ball bearing 17x42x14.5 □ 11
11	9640 003 2690	1	Oil seal 23.8x33.4x4
12	9465 620 2690	1	Snap ring 44
13	9503 003 0510	1	Grooved ball bearing 6004
14	1115 084 8300	1	Reflector foil
15	9633 003 2210	1	Oil seal 20x30x5
16	1114 647 9400	1	Hose
17	1106 640 3801	1	Pickup body
18	1115 030 0400	1	Crankshaft
19	1115 029 0501	1	Gasket

(1) 056 S, (2) 056 M, (3) 056

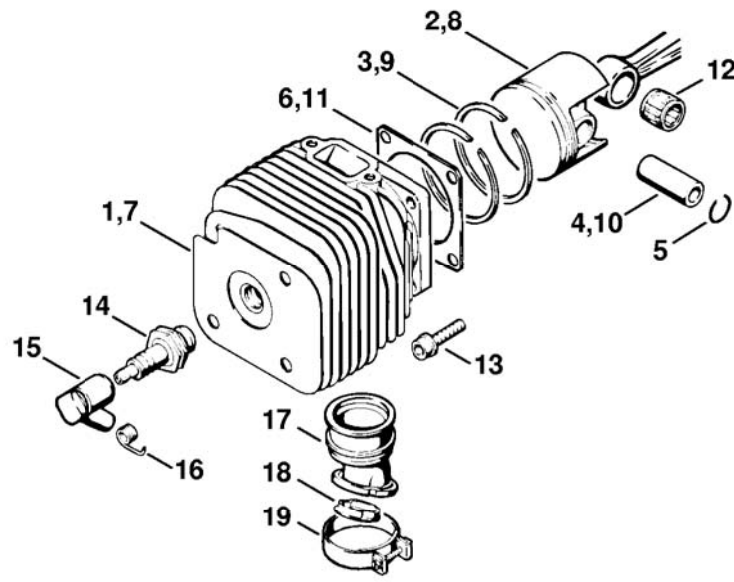


123ET003 SC

# Illustration B Fan shroud

Ref.Nr.	Item code	Quantity	Description
1	1117 656 7700	1	Chain catcher
2	9041 216 1310	1	Pan head screw M6x18
3	1115 640 3600	1	Oil filler cap □ 4 - 6
4	0000 992 6305	1	Sealing ring
5	1117 350 0901	1	Filler cap retainer
6	9099 021 2360	1	Self-tapping screw 3.5x9.5
7	1115 084 0900	1	Fan shroud
8	9021 319 0670	3	Pan head screw M4x14
9	1115 141 8600	1	Impulse hose
10	1115 664 0500	1	Bumper spike
11	9008 319 1280	2	Hexagon head screw M6x16
12	9214 320 0900	2	Lock nut M6
13	1115 790 9905	1	Annular buffer Only in conjunction with fire-safe muffler 1115 140 0607
13	1115 790 9906	1	Annular buffer
14	9048 216 1010	2	Pan head screw M5x18
15	1113 791 6110	1	Collar screw
16	1114 790 9600	1	Annular buffer
17	1115 790 9602	1	Annular buffer
18	9045 371 0960	1	Socket head screw M5x12
19	0000 989 0602	1	Grommet
20	1115 432 9200	1	Support
21	1115 664 0501	1	Bumper spike Only in conjunction with fire-safe muffler 1115 140 0607

(1) 056 S, (2) 056 M, (3) 056

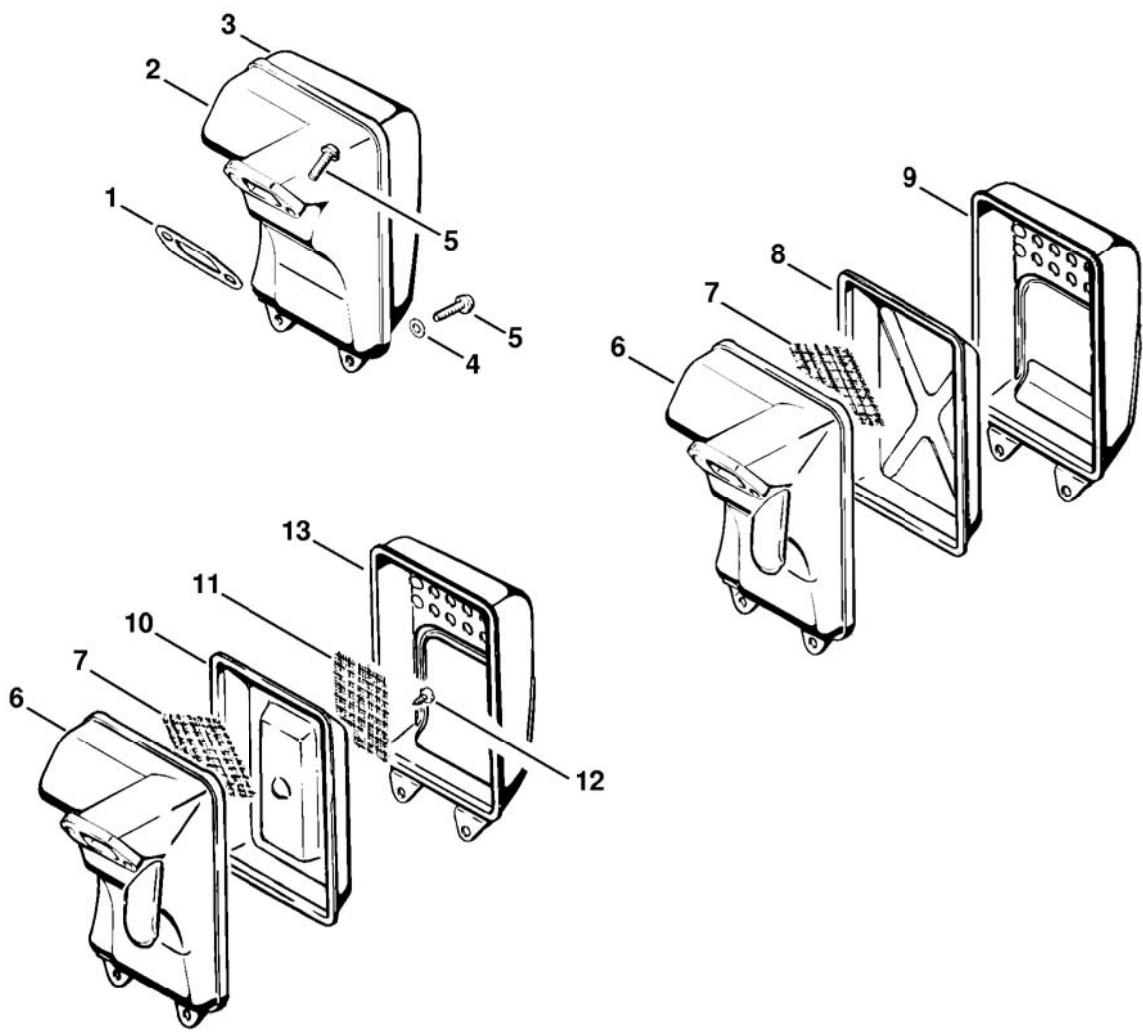


123ET004 SC

# Illustration C Cylinder

Ref.Nr.	Item code	Quantity	Description
1	1115 020 1205	1	Cylinder with piston Ø 54mm (1) □ 2 - 5
2	1115 030 2002	1	Piston Ø 54mm (1) □ 3 - 5
3	1115 034 3012	2	Piston ring Ø 54x1.5mm (1)
4	1115 034 1500	1	Piston pin 13x34 (1)
5	9463 650 1300	2	Snap ring 13x1
6	1115 029 2300	1	Cylinder gasket (1)
7	1115 020 1202	1	Cylinder with piston Ø 56mm (2) □ 5, 8 - 10
7	1115 020 1203	1	Cylinder with piston Ø 56mm (2) □ 5, 8 - 10
8	1115 030 2003	1	Piston Ø 56mm (2) □ 5, 9, 10
9	1115 034 3013	2	Piston ring Ø 56x1.5mm (2)
10	1115 034 1501	1	Piston pin 13x36 (2)
11	1115 029 2301	1	Cylinder gasket (2)
12	9512 003 3410	1	Needle cage 13x17x14.5
13	9036 341 1350	4	Socket head screw M6x25
14	1110 400 7005	1	Spark plug Bosch WSR 6 F
14	0000 400 7000	1	Spark plug NGK BPMR7A
15	1128 405 1000	1	Spark plug boot
16	0000 998 0604	1	Torsion spring
17	1115 141 2200	1	Manifold
18	1117 141 1800	1	Sleeve
19	9771 021 2580	1	Hose clip Ø 34x7

(1) 056 S, (2) 056 M, (3) 056



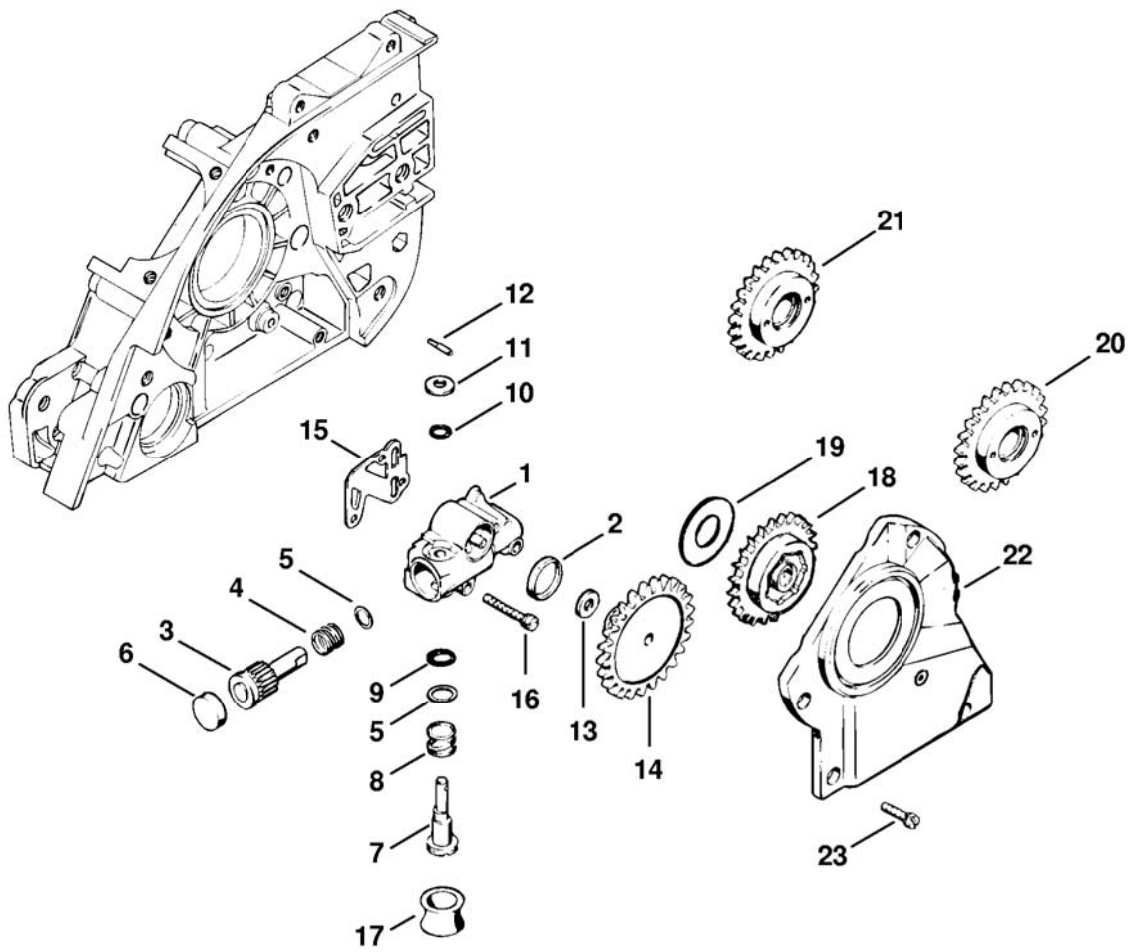
123ET006 SC

Illustration D Muffler

Ref.Nr.	Item code	Quantity	Description
1	1115 149 0600	1	Exhaust gasket
	1115 140 0600	1	Muffler □ 2, 3
2	1115 145 0701	1	Inlet casing
3	1115 145 0801	1	Outlet-shell
4	9291 021 0120	2	Washer 5.3
5	9040 346 1010	4	Socket head screw M5x18
	1115 140 0607	1	Muffler (B) Only in conjunction with bumper spike 1115 664 0501 □ 6 - 9
6	1115 140 0901	1	Inlet casing (B) Only in conjunction with bumper spike 1115 664 0501 □ 7
			Screen (B) Only in conjunction with bumper spike 1115 664 0501
8	1115 145 0400	1	Silencer casing (B) Only in conjunction with bumper spike 1115 664 0501
9	1115 145 0902	1	Protecting shell (B) Only in conjunction with bumper spike 1115 664 0501
	1115 140 0608	1	Muffler Only in conjunction with bumper spike 1115 664 0501 □ 6, 7, 10 - 13
10	1115 140 0800	1	Outlet-shell Only in conjunction with bumper spike 1115 664 0501 □ 11, 12
			Screen Only in conjunction with bumper spike 1115 664 0501
12	9099 021 0810	1	Self-tapping screw 4.2x9.5 Only in conjunction with bumper spike 1115 664 0501
13	1115 145 0900	1	Protecting shell Only in conjunction with bumper spike 1115 664 0501

(1) 056 S, (2) 056 M, (3) 056



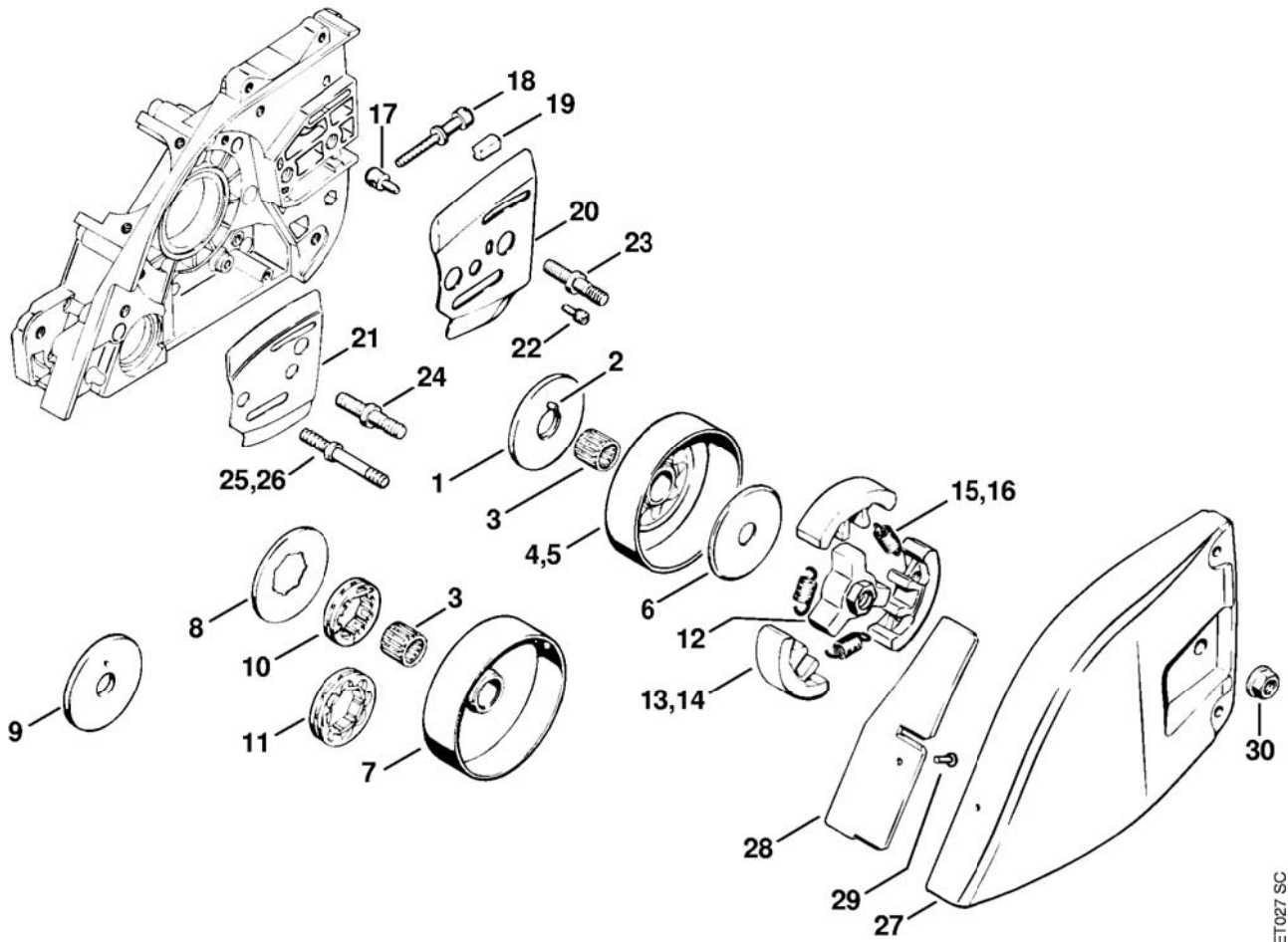


123ET000 SC

Illustration E Oil pump  
 Printed from MediaCat

Ref.Nr.	Item code	Quantity	Description
	1113 640 3201	1	Oil pump □ 1 -14
1	1117 640 3001	1	Pump housing □ 2
2	9643 950 1160	1	Sealing ring 12x16x3
3	1117 647 0601	1	Pump piston
4	0000 997 1010	1	Compression spring
5	0000 958 0701	2	Washer
6	0000 988 6220	1	Plug
7	1117 647 4801	1	Control bolt
8	0000 997 1200	1	Helical spring
9	9646 945 0490	1	O-ring 7x1.5
10	9646 945 0230	1	O-ring 5x1.25
11	9486 648 0100	1	Cup spring 10
12	1117 647 9800	1	Pin
13	0000 958 0402	1	Washer
14	1113 640 7100	1	Worm
15	1117 649 1100	1	Gasket
16	9048 319 0740	3	Pan head screw M4x25
17	0000 989 0401	1	Rubber ring
18	0000 958 1404	1	Washer
19	1115 640 7501	1	Spur gear
20	* 1115 007 1006	1	Spur gear → X 10 963 560 (26.82) □ 18
21	1115 647 1802	1	Spur gear (B)
22	1115 020 1100	1	Cover
23	9048 319 0660	4	Pan head screw M4x12

(1) 056 S, (2) 056 M, (3) 056

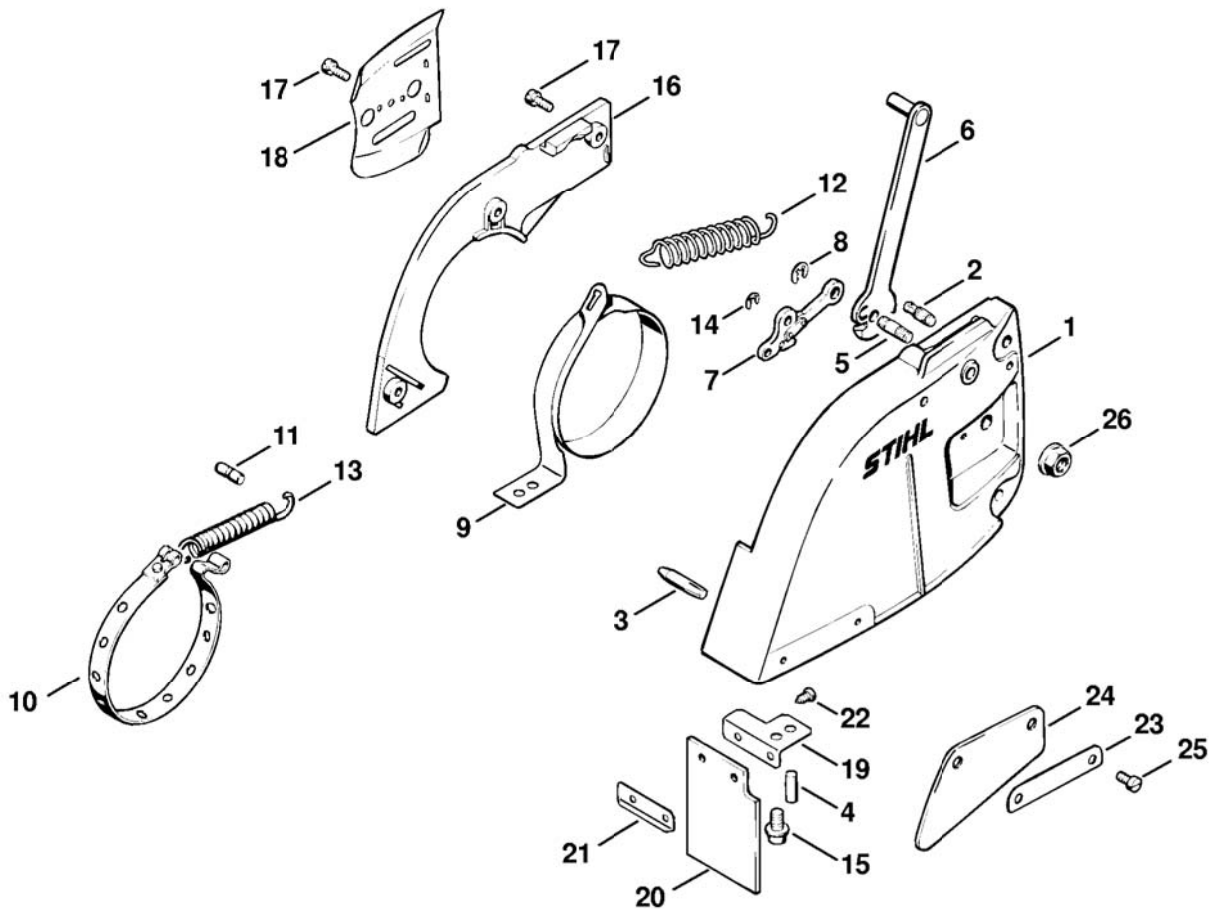


123ET027 SC

# Illustration F Clutch

Ref.Nr.	Item code	Quantity	Description
1	1115 030 7500	1	Cover washer (B) □ 2
2	9517 003 0490	1	Cylindrical roller 2.5x16.8 (B)
3	9512 933 3760	1	Needle cage 14x17x17
4	1115 640 2001	1	Chain sprocket 3/8" 7T (B)
5	1115 640 2005	1	Chain sprocket 0.404" 7T (B)
6	1106 162 8800	1	Washer
	1115 007 1045	1	Rim sprocket kit 0.404" 7T □ 7, 8, 10
7		1	Clutch drum (D)
8	1115 036 9101	1	Cover washer
9	* 1115 030 7501	1	Cover washer → X 10 963 560 (26.82)
10	0000 642 1206	1	Rim sprocket 0.404" 7T
	1115 007 1048	1	Rim sprocket kit 3/8" 8T □ 7, 8, 11
11	0000 642 1215	1	Rim sprocket 3/8" 8T
	1115 160 2000	1	Clutch □ 12, 13, 15
12	1115 162 3202	1	Carrier
13	1115 162 0803	3	Clutch shoe
14	* 1115 160 1500	3	Clutch shoe → 7 618 601 (46.80)
15	0000 997 6202	3	Tension spring
16	* 0000 997 5922	3	Tension spring → 7 618 601 (46.80)
17	1120 664 1500	1	Tensioning nut
18	1110 664 1600	1	Adjusting screw
19	1110 021 9000	1	Clamp
20	1122 664 1000	1	Inner side plate
21	* 1113 664 1001	1	Inner side plate → X 13 809 813 (36.84)
22	9048 319 0660	1	Pan head screw M4x12
23	1115 664 2405	2	Collar screw M10/M8
24	* 1110 664 2400	1	Collar screw → X 13 809 813 (36.84)
25	* 1115 664 2400	1	Collar screw → X 13 809 813 (36.84)
26	* 1115 664 2410	1	Collar screw → X 13 809 813 (36.84)
27	1115 640 1700	1	Chain sprocket cover
28	1115 656 1500	1	Guard plate
29	9415 415 2270	1	Hollow rivet 3x0.3x8
30	9220 260 1100	2	Hexagon nut M8

(1) 056 S, (2) 056 M, (3) 056

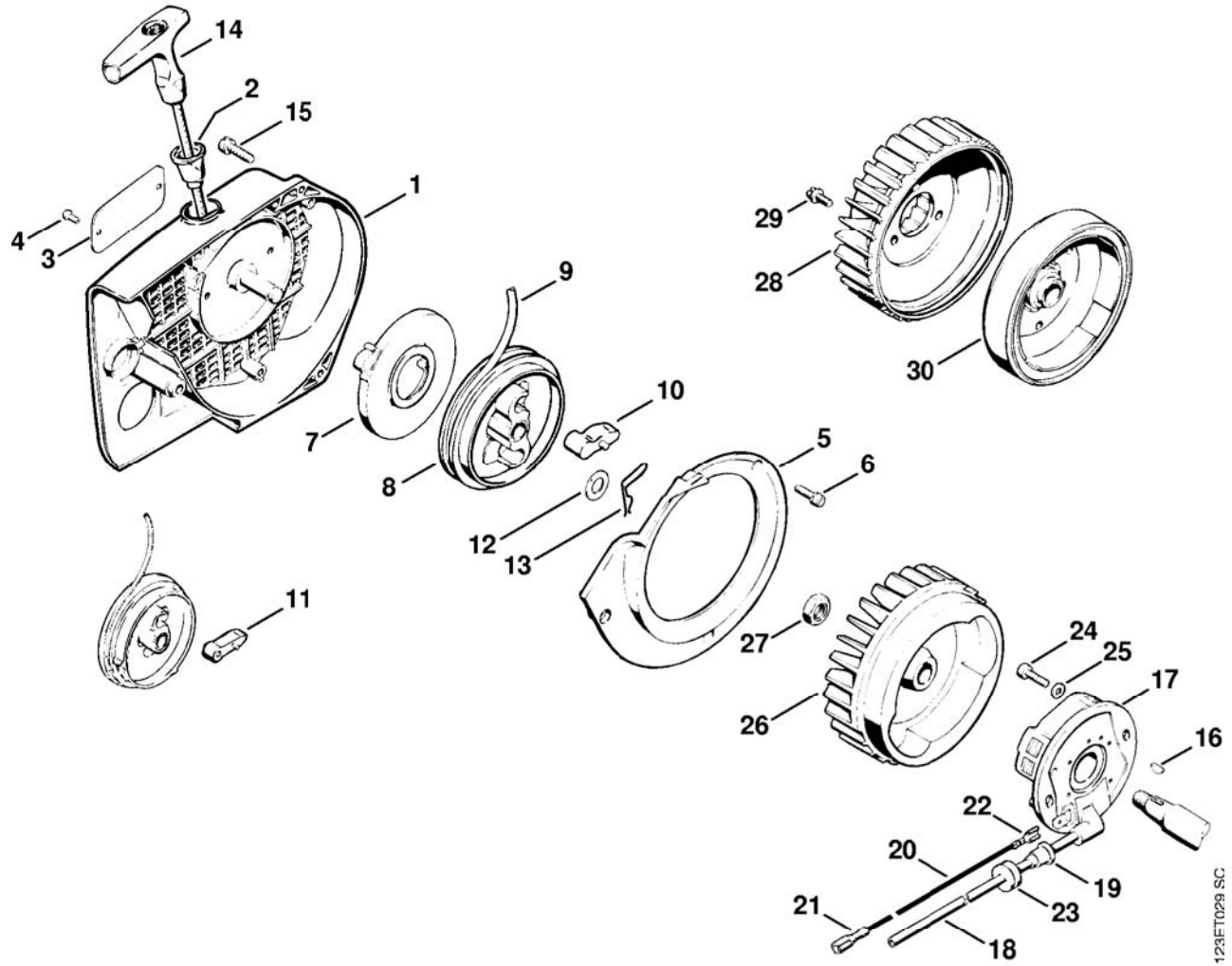


123ET028 SC

# Illustration G Chain brake

Ref.Nr.	Item code	Quantity	Description
	1115 640 1715	1	Chain sprocket cover □ 2 - 9, 12, 14 - 18
1	1115 640 1714	1	Chain sprocket cover □ 2 - 5
2	1120 162 5200	1	Pin
3	0000 971 0612	1	Pin
4	9381 651 2600	1	Cylindrical pin 5x16
5	1115 162 5226	1	Pin
6	1115 160 5016	1	Lever
7	1115 160 5015	1	Lever
8	9460 624 0500	1	E-clip 5
9	1115 162 5401	1	Brake band
10	* 1115 160 5400	1	Brake band → X 13 422 813
11	* 1115 162 5220	1	Pin → X 13 422 813 (36.84)
12	1115 162 7905	1	Tension spring
13	* 1115 162 7900	1	Tension spring → X 13 422 813 (36.84)
14	9460 624 0400	1	E-clip 4
15	9036 313 0960	1	Socket head screw M5x12
16	1115 648 7702	1	Cover
17	9048 319 0660	4	Pan head screw M4x12
18	1113 664 1100	1	Outer side plate
	1115 650 9300	1	Chip guard □ 19 - 22
19	1115 656 5000	1	Retaining strip
20	1106 656 2000	1	Chip guard
21	1115 656 5100	1	Clamping bar
22	9099 021 2740	1	Self-tapping screw 3.9x9.5
23	1115 656 5105	1	Clamping bar
24	1115 656 2005	1	Chip guard
25	9079 319 0650	2	Flat head screw M4x10
26	9220 260 1100	2	Hexagon nut M8

(1) 056 S, (2) 056 M, (3) 056



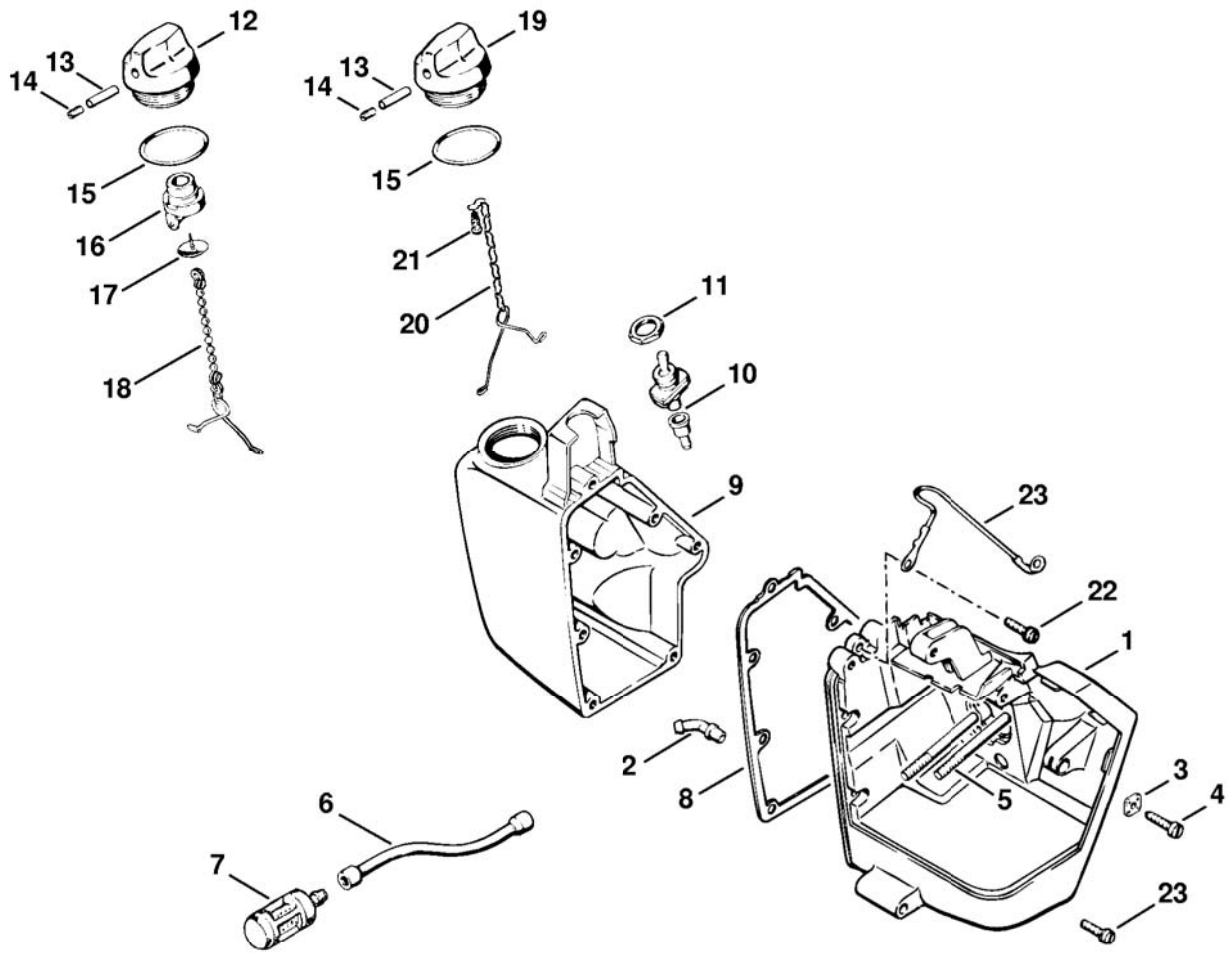
123ET029 SC

# Illustration H Rewind starter, Ignition system

Ref.Nr.	Item code	Quantity	Description
	1115 080 2101	1	Fan housing with rewind starter □ 1 - 10, 12 - 14
1	1115 080 1801	1	Fan housing □ 2 - 4
2	1110 084 9102	1	Bushing
3	0000 967 2020	1	Nameplate STIHL
4	0000 974 1000	2	Round head rivet 3x6
5	1115 084 7800	1	Segment
6	9048 319 0660	3	Pan head screw M4x12
7	1117 190 0601	1	Rewind spring
8	1117 190 1011	1	Rope rotor
9	1107 195 8200	1	Starter rope Ø 4.5x1000mm
	0000 930 2200	1	Starter rope Ø 4.5mm x 30.5m (B)
10	1124 195 7200	1	Pawl
11	* 1117 195 7200	1	Pawl → X 15 373 614 (13.86)
12	1118 162 8935	1	Washer
13	1117 195 3500	1	Spring
14	1121 195 3400	1	Starter grip
15	9048 216 1010	3	Pan head screw M5x18
16	9482 435 0390	1	Woodruff key 3x3 7
17	1108 400 0800	1	Ignition module □ 18 - 22
18		1	Ignition lead 295mm
	0000 405 0600	1	Ignition lead 1m (B)
	0000 930 2251	1	Ignition lead 10m (B)
19	0000 989 1010	1	Grommet
20	1108 440 1102	1	Short circuit wire 285mm / 11.2" □ 21, 22
	0751 010 1110	1	Lead 10m / 33' (B)
21	0751 030 8492	1	Terminal socket
22	0751 030 8957	1	Terminal socket 4.8-1/0.8
23	0000 989 0810	1	Grommet
24	9022 313 0680	2	Spline screw IS-M4x16
25	9291 021 0100	2	Washer 4.3
26	1115 400 1208	1	Flywheel
27	9211 260 1340	1	Hexagon nut M10x1
28	* 1115 086 0501	1	Fanwheel → X 14 038 763 (10.85)
29	* 9048 216 0960	3	Pan head screw M5x12 → X 14 038 763 (10.85)
30	* 1115 400 1206	1	Flywheel (Bosch) → X 14 038 763 (10.85)

(1) 056 S, (2) 056 M, (3) 056



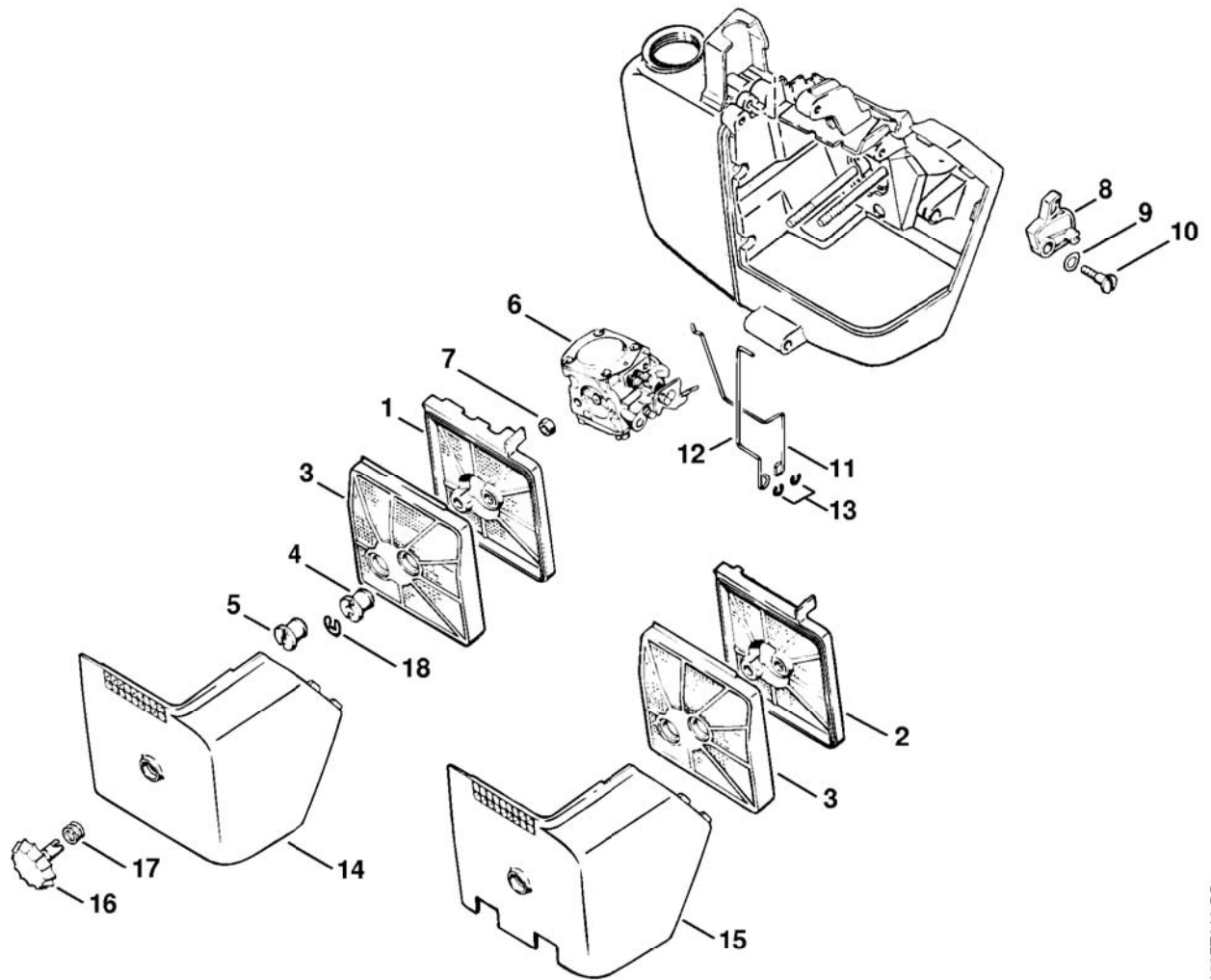


123ET014 SC

Illustration J Carburetor box  
 Printed from MediaCat

Ref.Nr.	Item code	Quantity	Description
1	1115 140 1700	1	Carburetor box □ 2 - 4
2	1112 122 3900	1	Elbow connector
3	1115 121 7700	1	Guide piece
4	1110 122 6201	1	Idle speed adjustment screw
5	9121 319 1120	2	Stud M5x55
6	1115 358 7700	1	Hose
7	0000 350 3500	1	Pickup body
8	1115 359 0700	1	Gasket
9	1115 351 0500	1	Tank housing
10	1111 430 0210	1	Stop switch
11	9211 260 1430	1	Hexagon nut M12x0.75
12	1110 350 0500	1	Filler cap (2) □ 13 - 18
13	1110 353 8102	1	Insert
14	0000 951 5800	1	Grub screw
15	9645 945 2820	1	O-ring 25x2.5
16	1110 353 2108	1	Valve body (2)
17	1110 353 1600	1	Valve (2)
18	1117 350 0905	1	Filler cap retainer (2)
19	1110 350 0501	1	Filler cap (1) □ 13 - 15, 20, 21
20	1117 350 0905	1	Filler cap retainer (1)
21	9099 021 2360	1	Self-tapping screw 3.5x9.5 (1)
22	9048 319 0680	7	Pan head screw M4x16
23	1115 440 2200	1	Ground wire

(1) 056 S, (2) 056 M, (3) 056



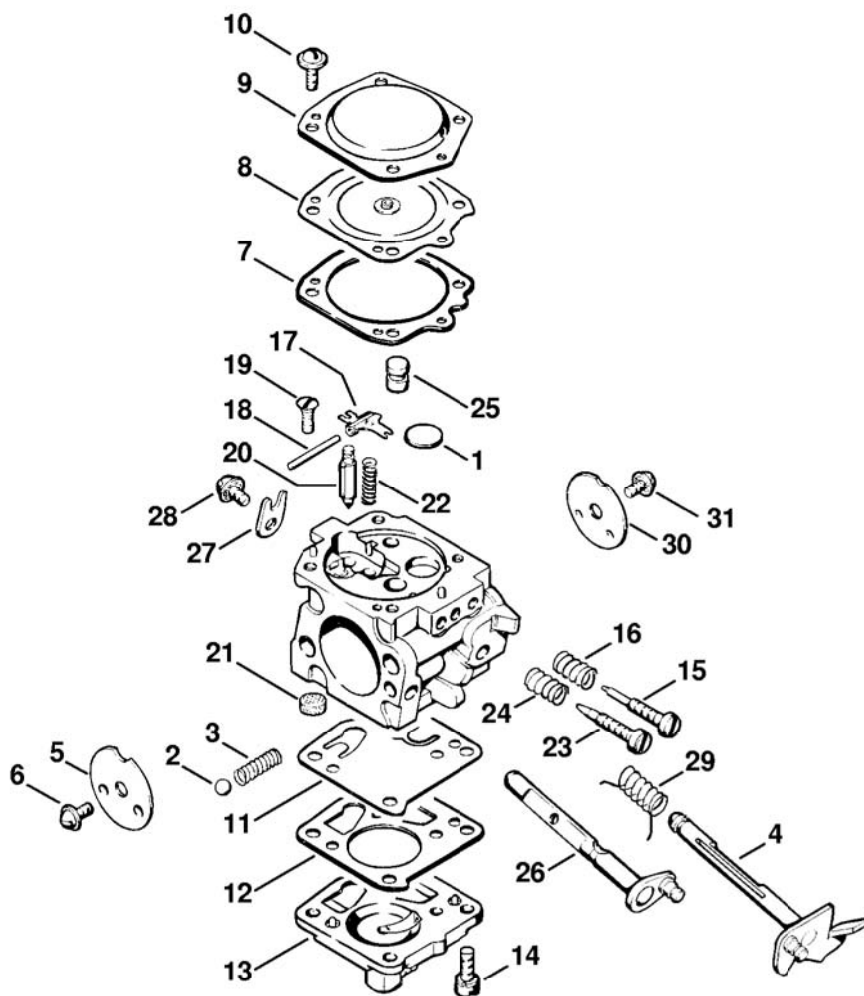
123ET016 SC

Illustration **K** Air filter

Printed from MediaCat

Ref.Nr.	Item code	Quantity	Description
	1115 120 1600	1	Air filter (1) □ 1, 3 - 5
	1115 120 1615	1	Air filter (B) □ 1, 3 - 5
	1115 120 1630	1	Air filter (2) □ 2 - 5
1	1115 120 1610	1	Air filter (1)
1	1115 120 1625	1	Air filter, flocked (B)
2	1115 120 1629	1	Air filter (2)
3	1115 120 1605	1	Air filter (1,2)
3	1115 120 1620	1	Air filter, flocked (B)
4	1113 140 9510	1	Slotted nut
5	1113 141 8305	1	Slotted nut
6	1115 120 0600	1	Carburetor HS-118B
6	1115 120 0602	1	Carburetor WJ-4B
7	9210 261 0700	2	Hexagon nut M5
8	1115 185 2000	1	Choke lever
9	9322 630 0140	1	Spring washer 6
10	0000 951 2600	1	Oval head screw M4x10
11	1115 182 1500	1	Throttle rod
12	1115 185 1900	1	Choke rod
13	9460 624 0320	2	E-clip 3.2
14	1115 141 1000	1	Carburetor box cover (1)
15	1115 141 1020	1	Carburetor box cover (2)
16	1113 140 9200	1	Twist lock
17	0000 997 0927	1	Compression spring
18	9460 624 0500	1	E-clip 5

(1) 056 S, (2) 056 M, (3) 056



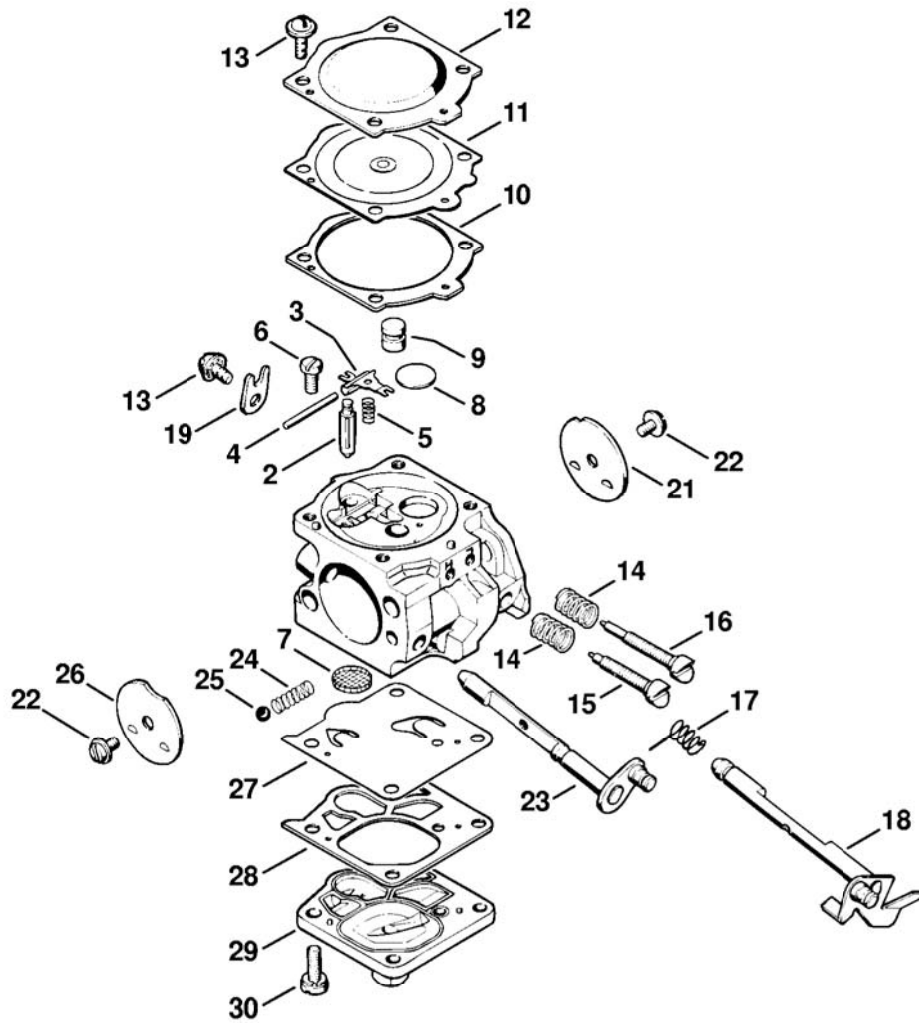
123E1017 SC

# Illustration L Carburetor HS-118B

Ref.Nr.	Item code	Quantity	Description
	1115 120 0600	1	Carburetor HS-118B □ 1 - 31
1	1110 122 9410	1	Plug
2	1110 122 4200	1	Ball
3	1108 122 3001	1	Spring
4	1115 120 7100	1	Throttle shaft with lever
5	1115 121 2900	1	Choke shutter
6	1110 122 7400	1	Round head screw
7	1110 129 0900	1	Gasket
8	1110 121 4700	1	Metering diaphragm
9	1110 121 0811	1	End cover
10	1106 122 7400	4	Round head screw
11	1110 121 4800	1	Pump diaphragm
12	1110 129 1110	1	Gasket
13	1115 121 0800	1	End cover
14	1110 122 7700	4	Oval head screw
15	1110 122 6800	1	Low speed adjustment screw
16	1110 122 3030	1	Spring
17	1124 121 5000	1	Inlet control lever
18	1110 121 9200	1	Spindle
19	1110 122 7800	1	Oval head screw
20	1110 121 5100	1	Inlet needle
21	1110 121 7810	1	Strainer
22	1110 122 3020	1	Spring
23	1111 122 6700	1	High speed adjustment screw
24	1106 122 3000	1	Spring
25	1111 121 5400	1	Valve jet
26	1115 120 7200	1	Choke shaft with lever
27	1110 122 9300	1	Clip
28	1110 122 7400	1	Round head screw
29	1110 122 3200	1	Torsion spring
30	1115 121 3300	1	Throttle shutter
31	1110 122 7400	1	Round head screw
	1115 007 1060	1	Set of carburetor parts □ 7, 8, 11, 12

(1) 056 S, (2) 056 M, (3) 056

Printed from MediaCat



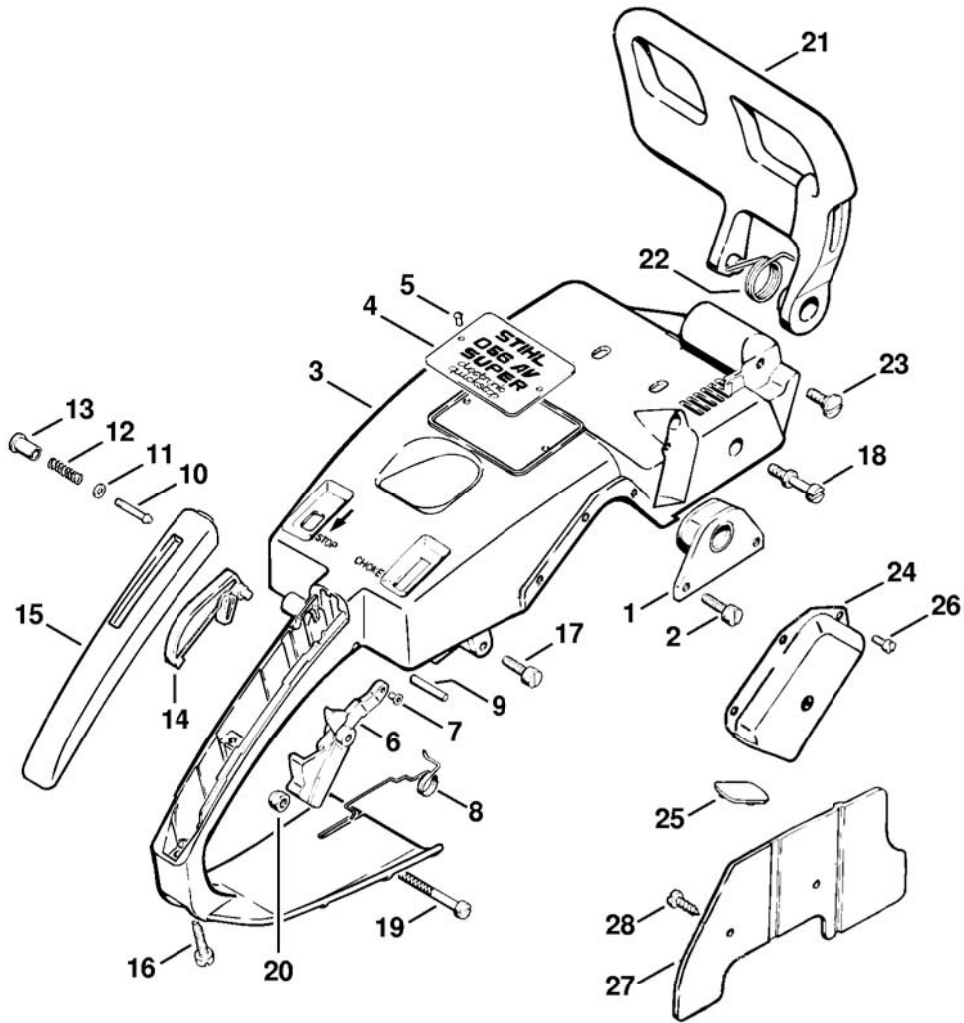
123ET018 SC

Illustration M Carburetor WJ-4B

Ref.Nr.	Item code	Quantity	Description
	1115 120 0602	1	Carburetor WJ-4B □ 2 - 30
2	1110 121 5100	1	Inlet needle
3	1117 121 5000	1	Inlet control lever
4	1117 121 9200	1	Spindle
5	1117 122 3005	1	Spring
6	1114 122 7400	1	Round head screw
7	1114 121 7800	1	Strainer
8	1115 121 0700	1	Cup plug
9	1115 121 5401	1	Valve jet
10	1116 129 0900	1	Gasket
11	1117 121 4700	1	Metering diaphragm
12	1117 121 0800	1	End cover
13	1106 122 7400	5	Round head screw
14	1115 122 3002	2	Spring
15	1115 122 6700	1	High speed adjustment screw
16	1115 122 6800	1	Low speed adjustment screw
17	1115 122 3200	1	Torsion spring
18	1115 120 7101	1	Throttle shaft with lever
19	1110 122 9300	1	Clip
21	1115 121 3301	1	Throttle shutter
22	1115 122 7400	2	Round head screw
23	1115 120 7201	1	Choke shaft with lever
24	1115 122 3001	1	Spring
25	1115 122 4200	1	Ball
26	1117 121 2900	1	Choke shutter
27	1115 121 4800	1	Pump diaphragm
28	1115 129 1100	1	Gasket
29	1115 120 0800	1	End cover
30	1121 122 7101	4	Screw
	1122 007 1060	1	Set of carburetor parts □ 10,11, 27, 28

(1) 056 S, (2) 056 M, (3) 056



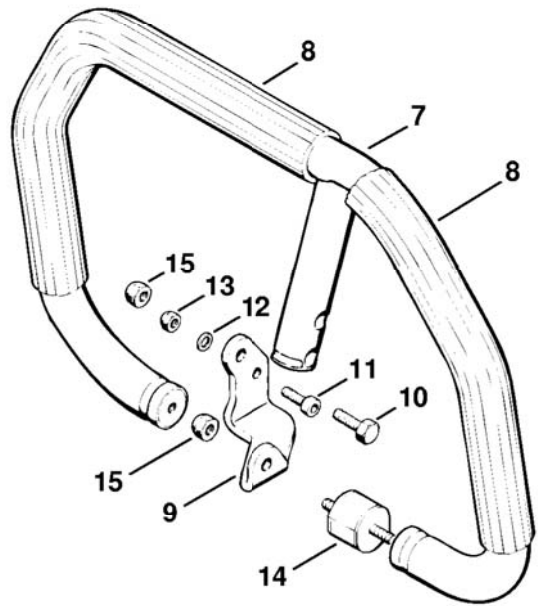
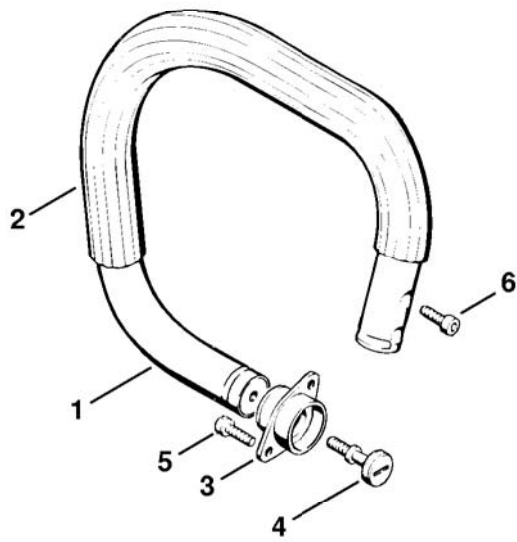


123ET019 SC

# Illustration N Handle frame

Ref.Nr.	Item code	Quantity	Description
1	1115 790 9900	1	Annular buffer
2	9048 216 1010	2	Pan head screw M5x18
3	1115 790 5600	1	Handle frame
4	1115 967 1502	1	Model plate 056 AVSEQ
	1115 967 1506	1	Model plate 056 AV Magnum II
	1115 967 1503	1	Model plate 056 AVSE
5	9441 065 1270	2	Round head rivet 2.6x6
6	1115 180 1501	1	Throttle trigger
		□ 7	
7	9415 415 2240	1	Hollow rivet 3x0.3x5
8	0000 998 1205	1	Torsion spring
9	9371 470 2640	1	Cylindrical pin 5x24
10	1113 182 8900	1	Pin
11	0000 958 0403	1	Washer
12	0000 997 0603	1	Compression spring
13	1113 182 9305	1	Starting throttle lock
14	1115 182 0801	1	Trigger interlock
15	1115 791 0601	1	Handle molding
16	9099 021 0850	1	Self tapping screw 4.8x22
17	9048 216 1010	3	Pan head screw M5x18
18	1113 791 6110	1	Collar screw
19	9043 216 1101	1	Pan head screw M5x45
20	9214 320 0700	1	Lock nut M5
21	1115 792 9105	1	Hand guard
22	1113 791 8200	1	Torsion spring
23	0000 951 2904	1	Oval head screw M6x3.2x12
24	1115 007 1015	1	Intake air preheating kit (B)
		□ 25 - 28	
25	1115 145 9000	1	Plug (B)
26	9047 319 0650	3	Pan head screw M4x10 (B)
27	1115 084 8200	1	Cover plate (B)
28	9099 021 2770	2	Self-tapping screw 3.9x13 (B)

(1) 056 S, (2) 056 M, (3) 056

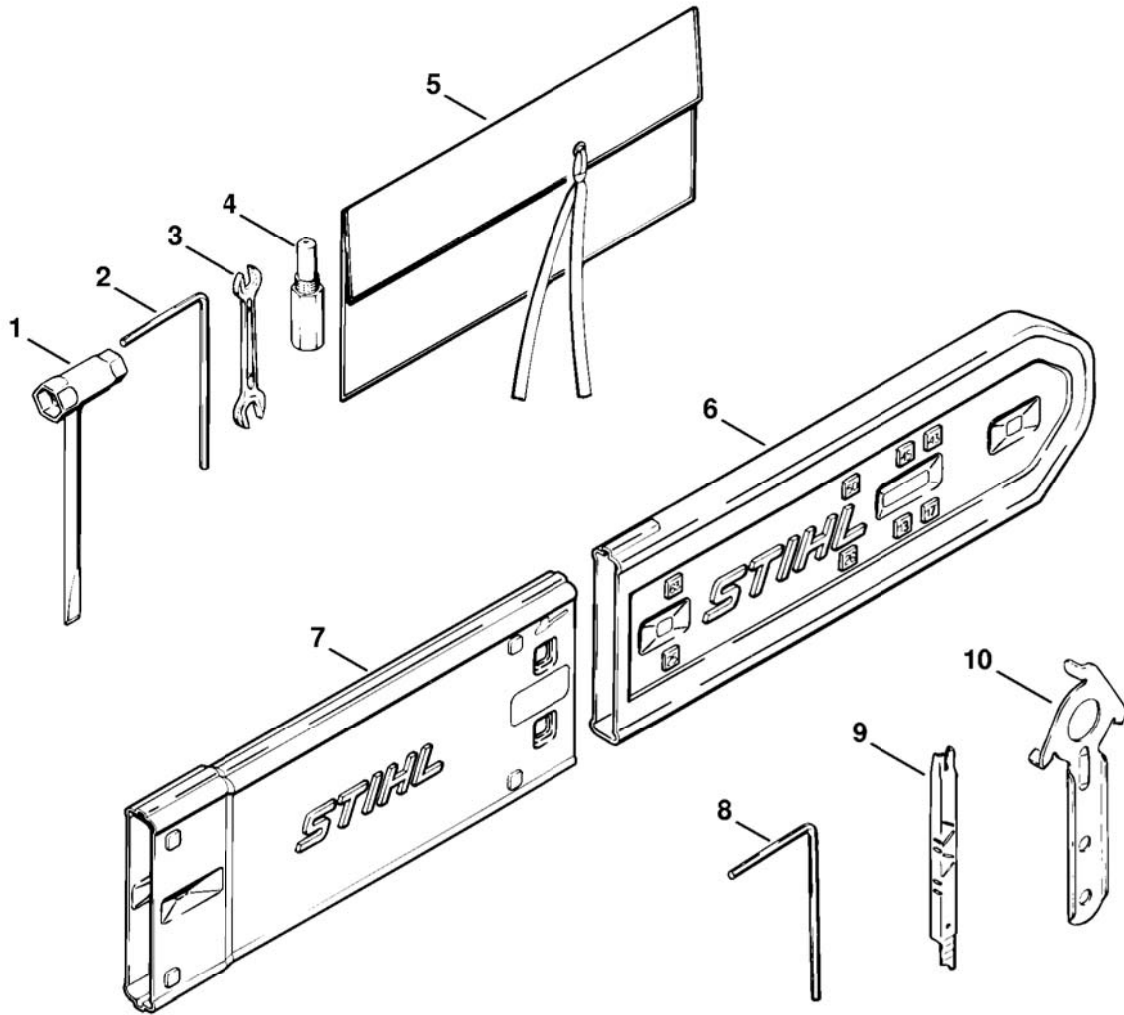


123ET020 SC

Illustration  Handlebar

Ref.Nr.	Item code	Quantity	Description
1	1115 790 1700	1	Handlebar with hose □ 2
2		1	Hose 395mm / 14 9/16"
	0000 791 2008	1	Handle hose Ø 21 mm x 5m / 7/8x197" (B)
3	1115 790 9901	1	Annular buffer
4	1115 791 6101	1	Collar screw
5	9048 216 1010	2	Pan head screw M5x18
6	9036 341 1050	2	Socket head screw M5x25
7	1115 790 3607	1	Wrap around handlebar □ 8
8		2	Handle hose 220, 370 mm / 8 11/16", 14 9/16"
9	1115 791 4401	1	Bracket
10	9008 319 1320	1	Hexagon head screw M6x20
11	9045 371 0980	1	Socket head screw M5x16
12	9291 021 0120	1	Washer 5.3
13	9214 320 0700	1	Lock nut M5
14	1115 790 9601	1	Annular buffer
15	9214 320 0900	2	Lock nut M6

(1) 056 S, (2) 056 M, (3) 056



123ET030 SC

Ref.Nr.	Item code	Quantity	Description
	1115 890 1400	1	Tool kit □ 1 - 5
1	1110 890 3401	1	Combination wrench
2	0811 270 1080	1	Allen key 4x70x130
3	0811 012 1152	1	Wrench 8x10
4	1107 191 1201	1	Locking screw
5	0000 891 0801	1	Tool roll
6	0000 792 9129	1	Chain scabbard
	1115 900 5001	1	STIHL repair kit (A)
7	0000 792 9132	1	Chain scabbard extension up to 63 cm (B)
8	0811 270 1100	1	Allen key 5x110x70 (B)
9	1110 893 4000	1	Filing gauge (B)
	1115 007 1050	1	Set of gaskets (A)
10 *	1115 893 1300	1	Wrench → 7 618 600 (46.80)

(1) 056 S, (2) 056 M, (3) 056