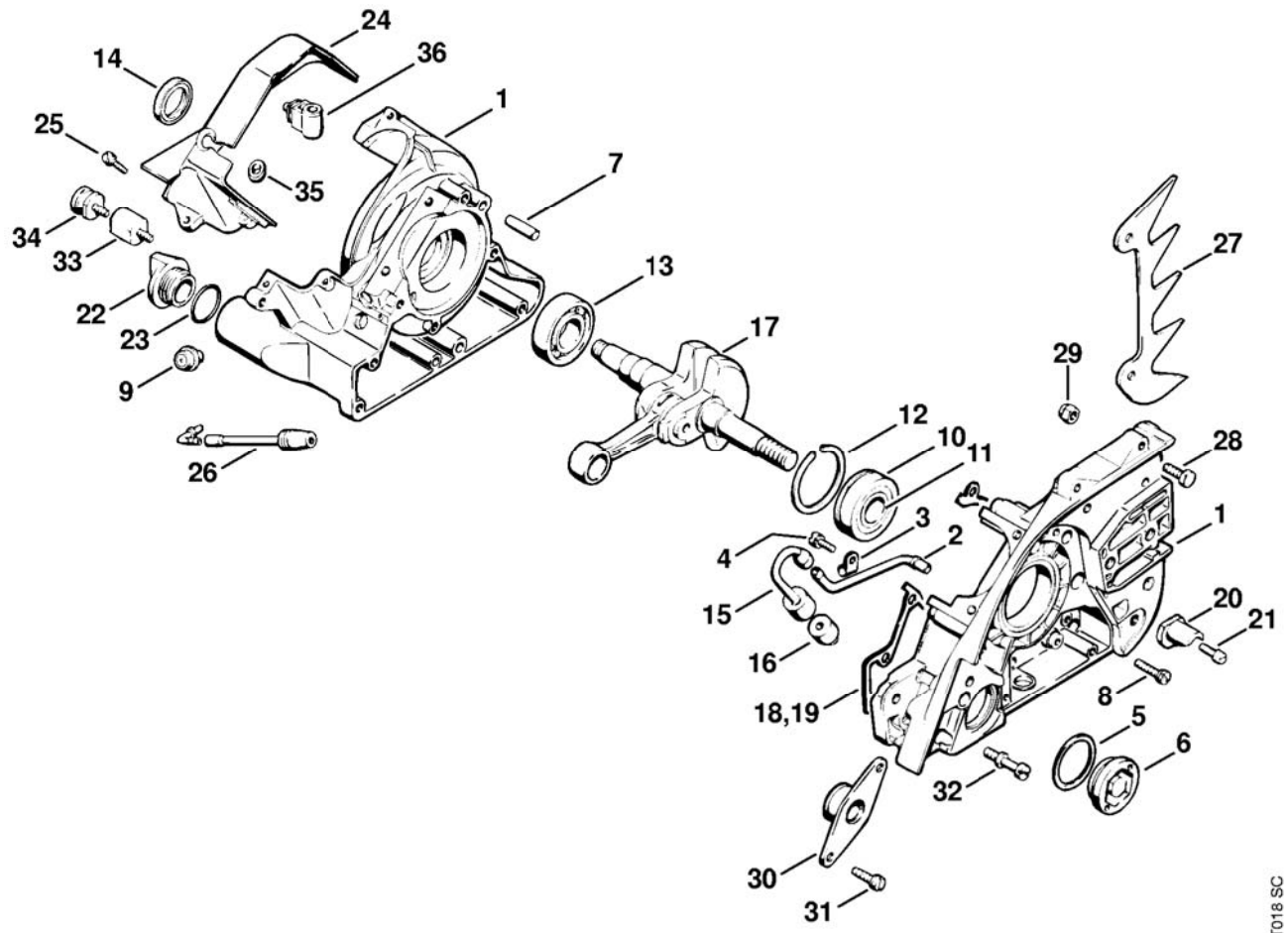


Illustration A Crankcase, Crankshaft

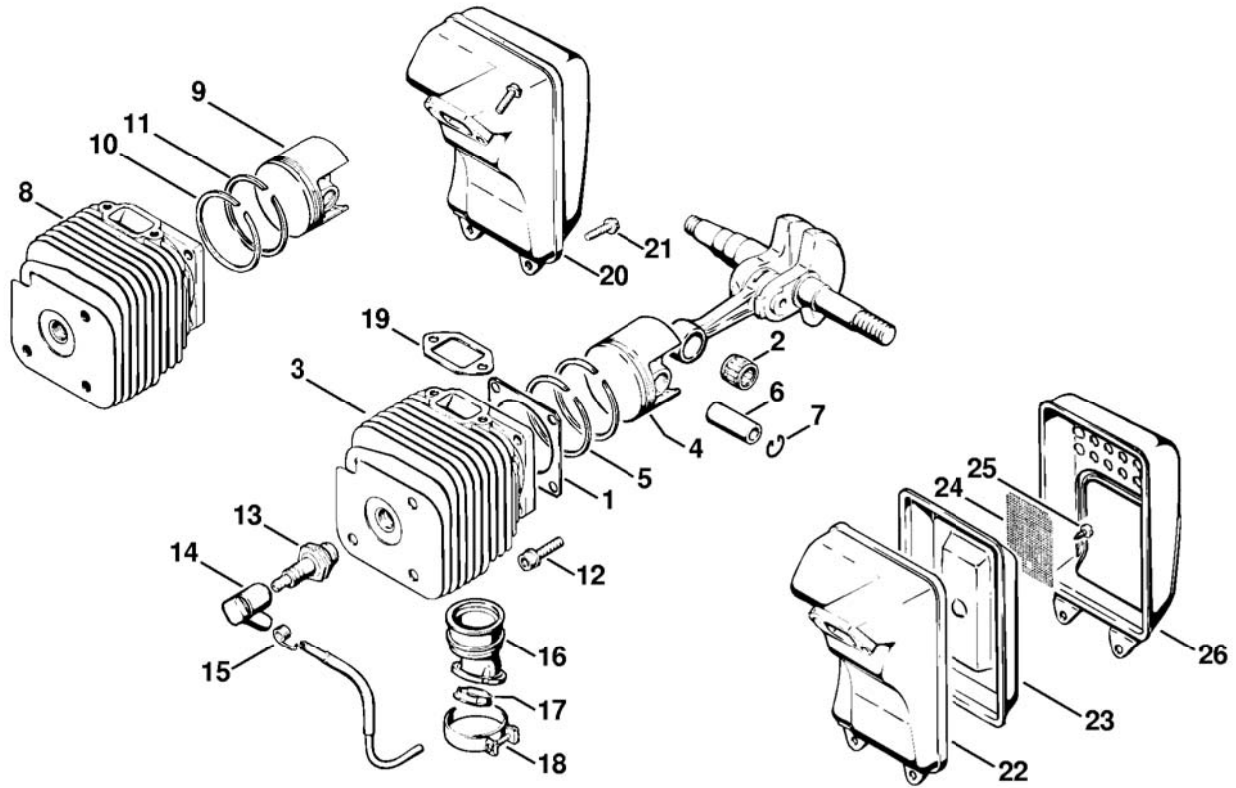


115E1018 SC

Illustration A Crankcase, Crankshaft

Ref.Nr.	Item code	Quantity	Description
1	1115 020 2113	1	Crankcase □ 2 - 13
2	1115 020 8200	1	Pickup tube □ 3
3	9778 021 0600	1	Tube clamp 6
4	9048 319 0660	1	Pan head screw M4x12
5	0000 992 7105	1	Sealing ring
6	1106 351 2200	1	Oil sight glass
7	9371 470 3120	2	Cylindrical pin 6x20
8	9048 216 1010	8	Pan head screw M5x18
9	1118 640 9100	1	Valve
10	9523 003 0440	1	Grooved ball bearing 17x42x13 □ 11
11	9639 003 2690	1	Oil seal 23.8x33.4x4
12	9459 620 2670	1	Snap ring 42
13	9503 003 0510	1	Grooved ball bearing 6004
14	9633 003 2210	1	Oil seal 20x30x5
15	1114 647 9400	1	Hose
16	1106 640 3801	1	Pickup body
17	1115 030 0400	1	Crankshaft
18	1115 029 0501	1	Gasket
19	* 1115 029 0500	1	Gasket → 9 330 950 (10.76)
20	1117 656 7700	1	Chain catcher
21	9041 216 1310	1	Pan head screw M6x18
22	1115 640 3600	1	Oil filler cap □ 23
23	0000 992 6305	1	Sealing ring
24	1115 084 0900	1	Fan shroud
25	9021 319 0670	3	Pan head screw M4x14
26	1115 141 8600	1	Impulse hose
27	1115 664 0500	1	Bumper spike
28	9008 319 1270	2	Hexagon head screw M6x14
29	9214 320 0900	2	Lock nut M6
30	1115 790 9905	1	Annular buffer
31	9048 216 1010	2	Pan head screw M5x18
32	1113 791 6110	1	Collar screw
33	1114 790 9600	1	Annular buffer
34	1115 790 9600	1	Annular buffer
35	0000 989 0600	1	Grommet
36	1115 432 9200	1	Support

(1) 045 AV, (2) 045 AVE, (3) 045 AVRE, (4) 045 AVEQ, (5) 045 AVRSE, (6) 045 AVRSEQ, (7) 045 AVSE, (8) 045 AVSEQ

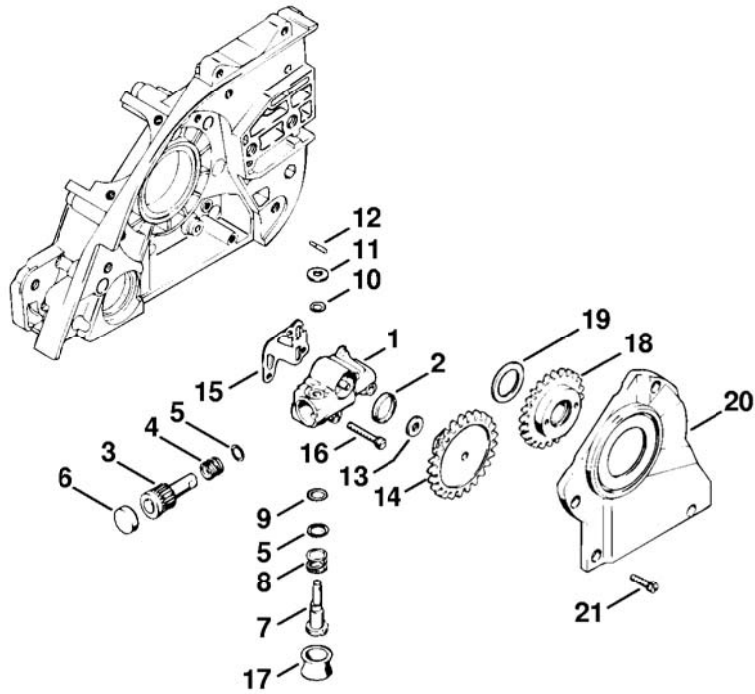


115ET019 SC

Illustration B Cylinder, Piston

Ref.Nr.	Item code	Quantity	Description
1	1115 029 2300	1	Cylinder gasket
2	9512 003 3410	1	Needle cage 13x17x14.5
3	1115 020 1201	1	Cylinder with piston Ø 52mm (1,2,3,4) □ 4 - 7
3	1115 020 1205	1	Cylinder with piston Ø 54mm (5,6,7,8) □ 4 - 7
4	1115 030 2001	1	Piston Ø 52mm (1,2,3,4) □ 5 - 7
4	1115 030 2002	1	Piston Ø 54mm (5,6,7,8) □ 5 - 7
5	1115 034 3010	2	Piston ring Ø 52x1.5mm (1,2,3,4)
5	1115 034 3012	2	Piston ring Ø 54x1.5mm (5,6,7,8)
6	1115 034 1500	1	Piston pin 13x34
7	9462 650 1300	2	Snap ring 13
8	* 1115 020 1200	1	Cylinder with piston Ø 50mm → 8 103 150 (14.74) □ 6, 7, 9 - 11
9	* 1115 030 2000	1	Piston Ø 50mm (C) → 8 103 150 (14.74)
10	* 1115 034 3005	1	Piston ring Ø 50mm (C) → 8 103 150 (14.74)
11	* 1115 034 3000	1	Piston ring Ø 50x1.5mm (C) → 8 103 150 (14.74)
12	9036 341 1350	4	Socket head screw M6x25
13	1110 400 7005	1	Spark plug Bosch WSR 6 F
13	0000 400 7000	1	Spark plug NGK BPMR7A
14	1113 405 1000	1	Spark plug boot
15	0000 998 0604	1	Torsion spring
16	1115 141 2200	1	Manifold
17	1117 141 1800	1	Sleeve
18	9771 021 2580	1	Hose clip Ø 34x7
19	1115 149 0600	1	Exhaust gasket
20	1115 140 0600	1	Muffler □ 22
21	9040 346 1010	4	Socket head screw M5x18
	1115 140 0605	1	Muffler □ 22 - 26
22	1115 145 0700	1	Inlet casing
23	1115 140 0800	1	Outlet-shell □ 24, 25
24	1111 141 9000	1	Screen
25	9099 021 0810	1	Self-tapping screw 4.2x9.5
26	1115 145 0900	1	Protecting shell

(1) 045 AV, (2) 045 AVE, (3) 045 AVRE, (4) 045 AVEQ, (5) 045 AVRSE, (6) 045 AVRSEQ, (7) 045 AVSE, (8) 045 AVSEQ



115EIT005 SC

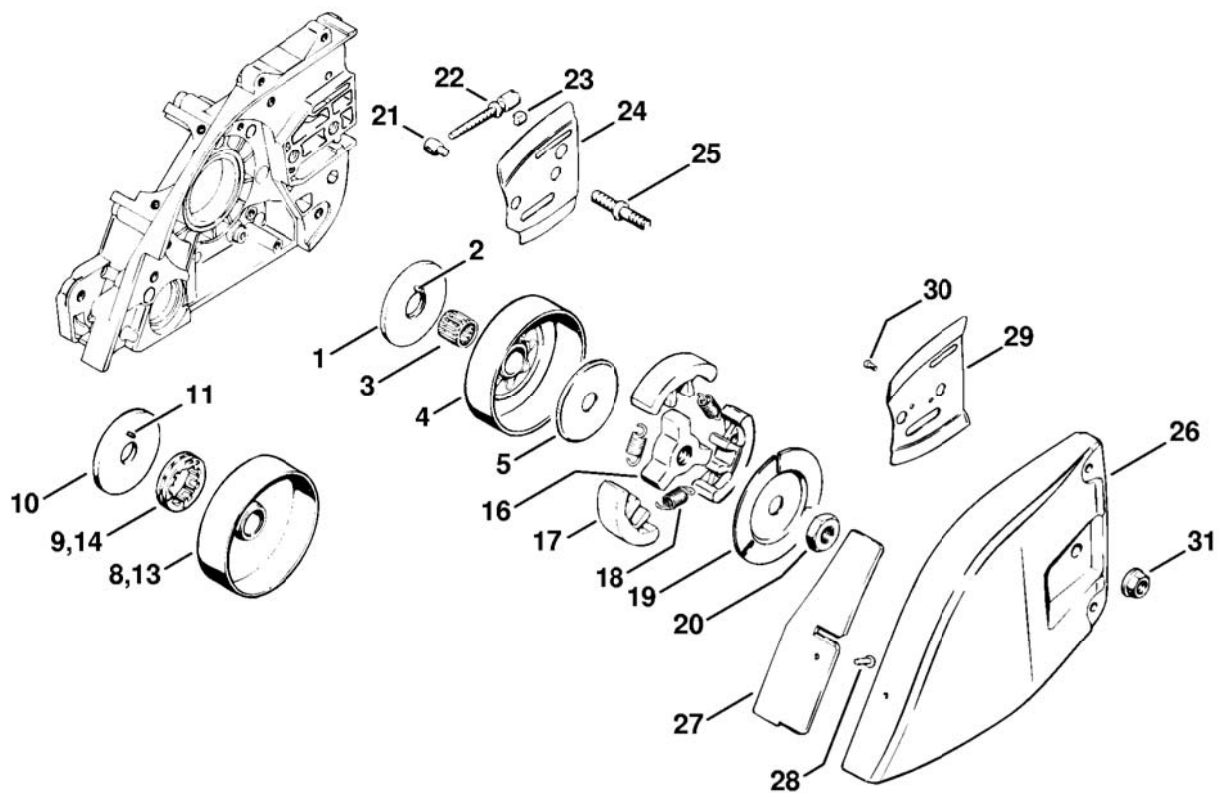
Illustration C Oil pump
 Printed from MediaCat

Ref.Nr.	Item code	Quantity	Description
	1113 640 3201	1	Oil pump □ 1 - 14
1	1117 640 3001	1	Pump housing □ 2
2	9643 950 1160	1	Sealing ring 12x16x3
3	1117 647 0601	1	Pump piston
4	0000 997 1010	1	Compression spring
5	0000 958 0701	2	Washer
6	0000 988 6220	1	Plug
7	1117 647 4801	1	Control bolt
8	0000 997 1200	1	Helical spring
9	9646 945 0490	1	O-ring 7x1.5
10	9646 945 0230	1	O-ring 5x1.25
11	9486 648 0100	1	Cup spring 10
12	1117 647 9800	1	Pin
13	0000 958 0402	1	Washer
14	1113 640 7100	1	Worm
15	1117 649 1100	1	Gasket
16	9048 319 0740	3	Pan head screw M4x25
17	0000 989 0401	1	Rubber ring
18	1115 007 1006	1	Spur gear □ 19
19	0000 958 1404	1	Washer
20	1115 021 1100	1	Cover
21	9048 319 0660	4	Pan head screw M4x12

(1) 045 AV, (2) 045 AVE, (3) 045 AVRE, (4) 045 AVEQ, (5) 045 AVRSE, (6) 045 AVRSEQ, (7) 045 AVSE, (8) 045 AVSEQ

Illustration D Chain sprocket, Clutch

Printed from MediaCat

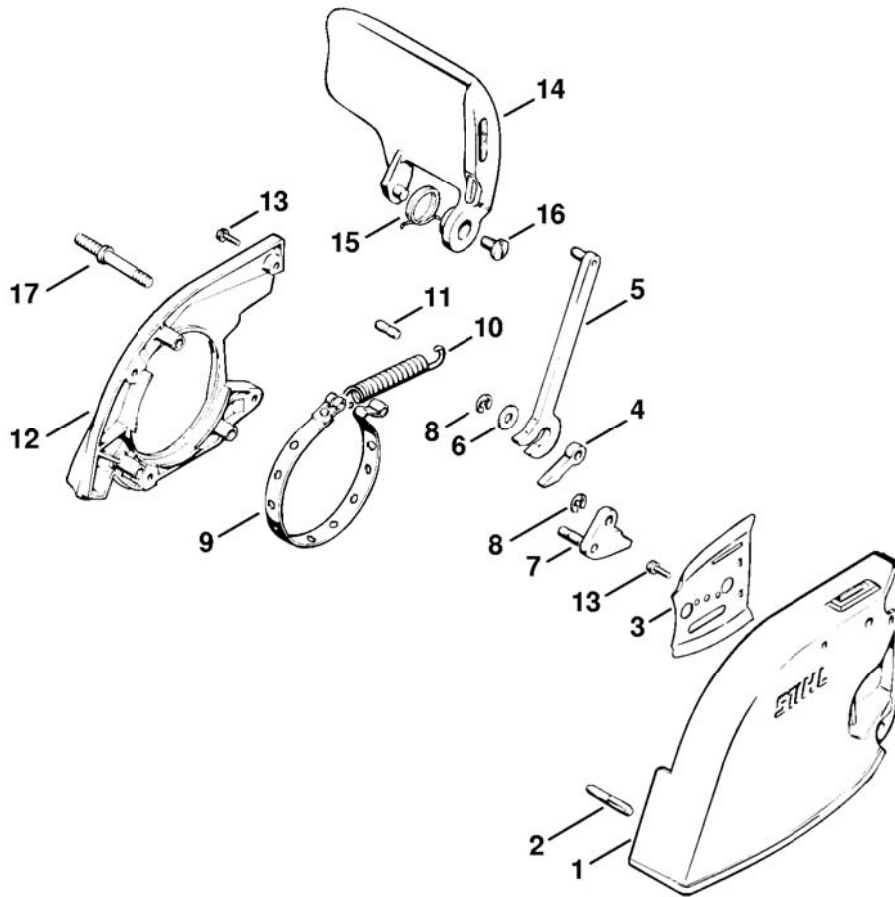


115ET007 SC

Illustration D Chain sprocket, Clutch

Ref.Nr.	Item code	Quantity	Description
1	1115 030 7500	1	Cover washer □ 2
2	9517 003 0490	1	Cylindrical roller 2.5x16.8
3	9512 003 3760	1	Needle cage 14x17x17
4	1115 640 2001	1	Chain sprocket 3/8" 7T
4	1115 640 2005	1	Chain sprocket 0.404" 7T (B)
5	1106 162 8800	1	Washer
	1115 007 1040	1	Rim sprocket kit 3/8" 7T (B) □ 8 - 11
8		1	Clutch drum (D)
9	0000 642 1221	1	Rim sprocket 3/8" 7T
10	1115 030 7501	1	Cover washer □ 11
11	9517 003 0480	1	Cylindrical roller 2.5x13.8
	1115 007 1041	1	Rim sprocket kit 0.404" 7T (B) □ 10, 11, 13, 14
13		1	Clutch drum (D)
14	0000 642 1206	1	Rim sprocket 0.404" 7T
	1115 160 2000	1	Clutch □ 16 - 18
16	1115 162 3202	1	Carrier
17	1115 162 0803	3	Clutch shoe
18	0000 997 6202	3	Tension spring
19	1115 162 8900	1	Washer
20	9211 260 1470	1	Hexagon nut M12x1.5
21	1110 664 1500	1	Tensioning nut
22	1110 664 1600	1	Adjusting screw
23	1110 021 9000	1	Clamp
24	1113 664 1001	1	Inner side plate
25	1110 664 2400	2	Collar screw
26	1115 640 1700	1	Chain sprocket cover □ 27, 28
27	1115 656 1500	1	Guard plate
28	9415 415 2270	1	Hollow rivet 3x0.3x8
29	1113 664 1100	1	Outer side plate
30	9441 065 1910	1	Round head rivet 3x8
31	9220 260 1100	2	Hexagon nut M8

(1) 045 AV, (2) 045 AVE, (3) 045 AVRE, (4) 045 AVEQ, (5) 045 AVRSE, (6) 045 AVRSEQ, (7) 045 AVSE, (8) 045 AVSEQ

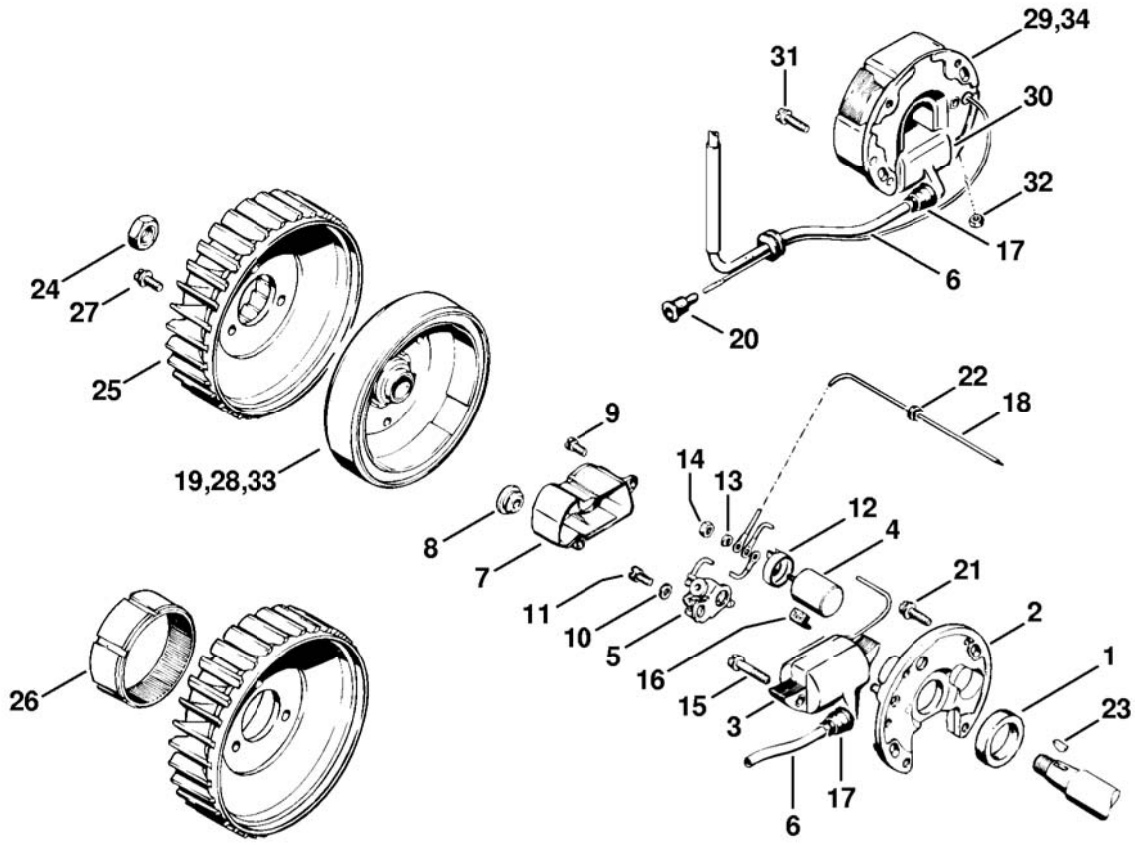


115ET008 SC

Illustration E Chain brake

Ref.Nr.	Item code	Quantity	Description
	1115 640 1708	1	Chain sprocket cover □ 1 - 13
1	1115 640 1705	1	Chain sprocket cover □ 2
2	0000 971 0612	1	Pin
3	1113 664 1100	1	Outer side plate
4	1115 162 5005	1	Lever
5	1115 160 5010	1	Lever
6	0000 958 0702	1	Washer
7	1115 160 5100	1	Cam
8	9460 624 0500	2	E-clip 5
9	1115 160 5400	1	Brake band
10	1115 162 7900	1	Tension spring
11	1115 162 5220	1	Pin
12	1115 648 7701	1	Cover
13	9048 319 0660	5	Pan head screw M4x12
14	1114 792 9101	1	Hand guard
15	1113 791 8200	1	Torsion spring
16	0000 951 2902	1	Oval head screw M6x3.2x12
17	1115 664 2400	2	Collar screw

(1) 045 AV, (2) 045 AVE, (3) 045 AVRE, (4) 045 AVEQ, (5) 045 AVRSE, (6) 045 AVRSEQ, (7) 045 AVSE, (8) 045 AVSEQ

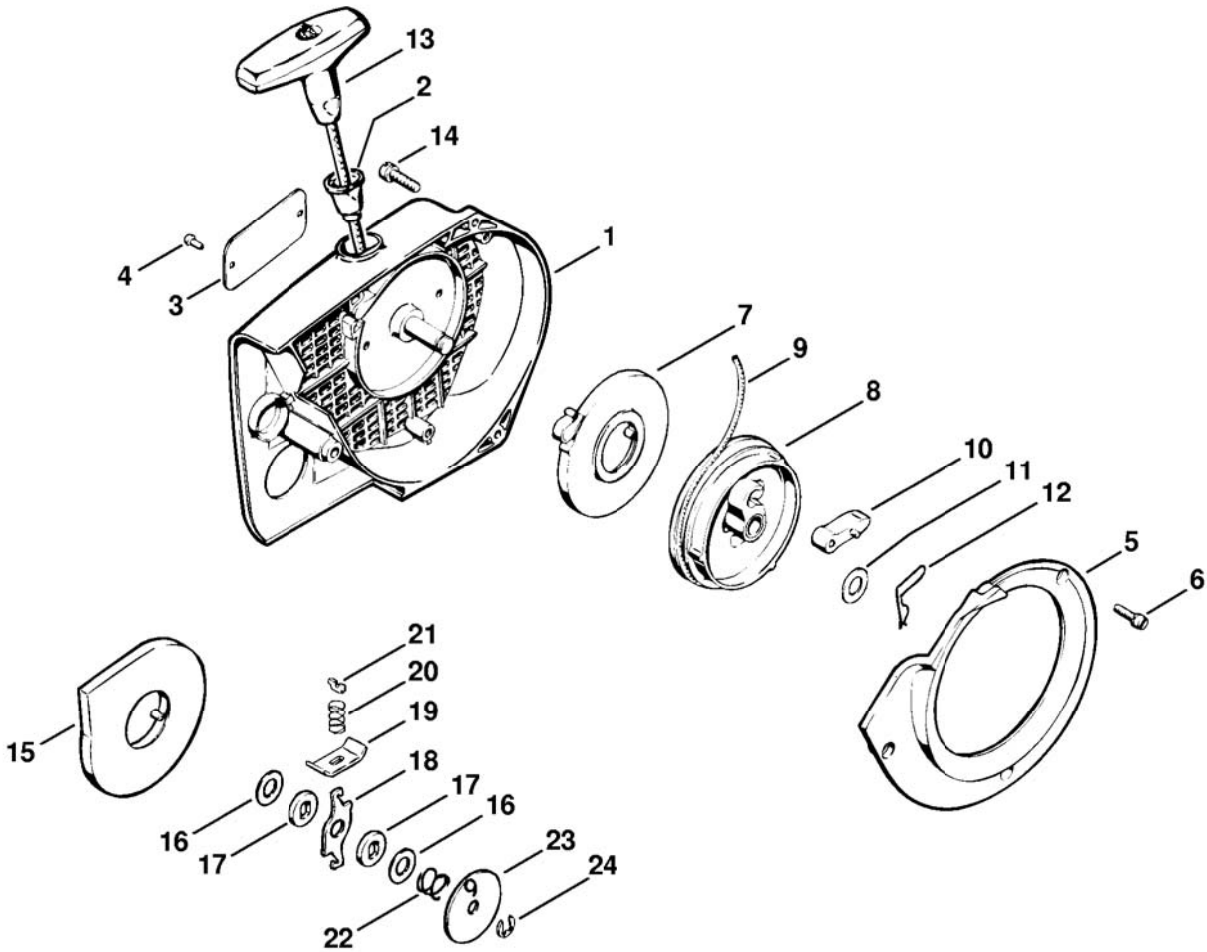


115ET020 SC

Illustration F Ignition systems

Ref.Nr.	Item code	Quantity	Description
1	0000 992 6300	1	Sealing ring
	1115 400 0500	1	Magneto BOSCH (1) □ 2 - 19
2	1115 400 0800	1	Stator plate □ 3 - 18
3	1115 404 3200	1	Ignition coil
4	1115 404 3400	1	Capacitor
5	1115 400 2000	1	Set of points
6		1	Ignition lead 270mm
	0000 930 2206	1	Ignition lead 30.4m (B)
	0000 930 2201	1	Ignition lead 10m (B)
7	1115 400 8200	1	Dust cap □ 8
8	1110 145 9001	1	Plug
9	9047 319 0340	2	Pan head screw M3x8
10	9322 630 0100	1	Spring washer 4
11	9041 216 0630	1	Pan head screw M4x8
12	1115 404 8800	1	Cap
13	9321 630 0080	1	Spring washer 3
14	9210 260 0400	1	Hexagon nut M3
15	9110 313 0700	2	Flat head screw M4x19
16	1110 404 4200	1	Felt wick
17	0000 989 1010	1	Grommet
18	1115 440 1100	1	Short circuit wire
19	1115 400 1200	1	Flywheel
20	1110 432 9200	1	Grommet
21	9048 319 0680	2	Pan head screw M4x16
22	0000 989 0810	1	Grommet
23	9482 435 0390	1	Woodruff key 3x3 7
24	9211 260 1340	1	Hexagon nut M10x1
25	1115 086 0501	1	Fanwheel
26	* 0000 961 5116	1	Ring → 5 919 430 (32.79)
27	9048 216 0960	3	Pan head screw M5x12
	1115 400 0507	1	Magneto SEM electronic (2,3,5,7) □ 28 - 32
28	1115 400 1207	1	Flywheel
29	1115 400 0808	1	Stator plate □ 6, 17,30 - 32
30	1110 404 3210	1	Ignition coil
31	9048 319 0680	2	Pan head screw M4x16
32	9210 260 0400	1	Hexagon nut M3
	1115 400 0506	1	Magneto BOSCH electronic (4,6,8) □ 6, 17, 33, 34
33	1115 400 1206	1	Flywheel
34	1115 400 0806	1	Stator plate □ 6, 17

(1) 045 AV, (2) 045 AVE, (3) 045 AVRE, (4) 045 AVEQ, (5) 045 AVRSE, (6) 045 AVRSEQ, (7) 045 AVSE, (8) 045 AVSEQ



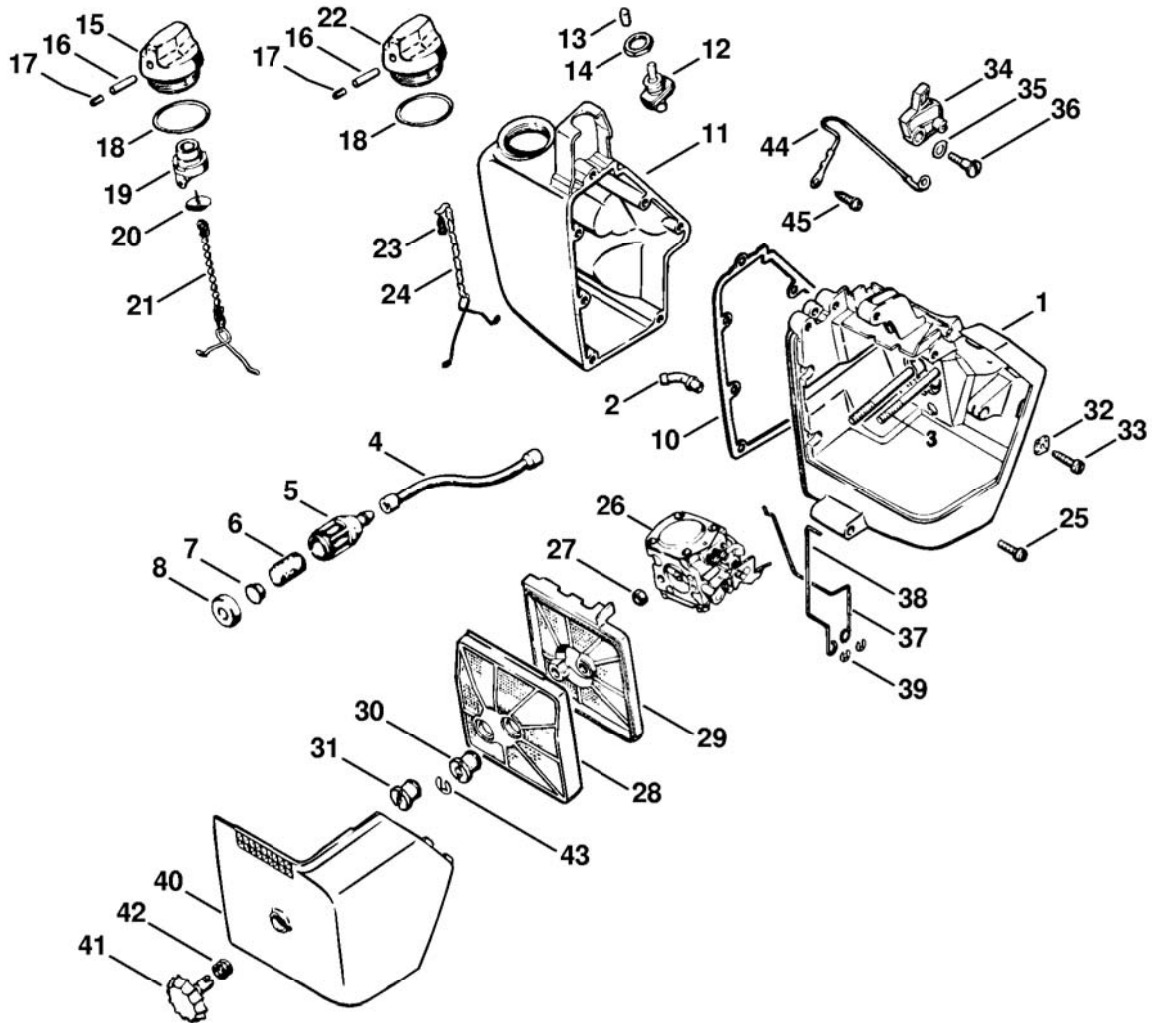
115ET021 SC

Illustration G Rewind starter

Ref.Nr.	Item code	Quantity	Description
	1115 080 2101	1	Fan housing with rewind starter □ 1 - 13
1	1115 080 1801	1	Fan housing □ 2 - 4
2	1110 084 9102	1	Bushing
3	0000 967 2020	1	Nameplate STIHL
4	0000 974 1000	2	Round head rivet 3x6
5	1115 084 7800	1	Segment
6	9048 319 0660	3	Pan head screw M4x12
7	1117 190 0601	1	Rewind spring
8	1117 007 1014	1	Rope rotor kit □ 10
9	1107 195 8200	1	Starter rope Ø 4.5x1000mm
	0000 930 2200	1	Starter rope Ø 4.5mm x 30.5m (B)
10	1124 195 7200	1	Pawl
11	0000 958 0900	1	Washer
12	1117 195 3500	1	Spring
13	1121 195 3400	1	Starter grip
14	9048 216 1010	3	Pan head screw M5x18
15	* 1115 190 0600	1	Rewind spring → 5 919 430 (32.79)
16	* 0000 958 1010	2	Washer → 5 919 430 (32.79)
17	* 1106 195 9001	2	Washer → 5 919 430 (32.79)
	* 1106 190 4600	1	Friction shoe → 5 919 430 (32.79) □ 18 - 22
18	* 1106 195 3000	1	Brake lever → 5 919 430 (32.79)
19	* 1106 195 5000	2	Friction shoe plate → 5 919 430 (32.79)
20	* 1106 195 5100	2	Friction shoe spring → 5 919 430 (32.79)
21	* 1106 195 1700	2	Spring retainer plate → 5 919 430 (32.79)
22	* 1106 195 2900	1	Brake spring → 5 919 430 (32.79)
23	* 1106 195 3200	1	Thrust washer → 5 919 430 (32.79)
24	* 9460 624 0500	1	E-clip 5 → 5 919 430 (32.79)

(1) 045 AV, (2) 045 AVE, (3) 045 AVRE, (4) 045 AVEQ, (5) 045 AVRSE, (6) 045 AVRSEQ, (7) 045 AVSE, (8) 045 AVSEQ

Illustration H Carburetor box, Air filter



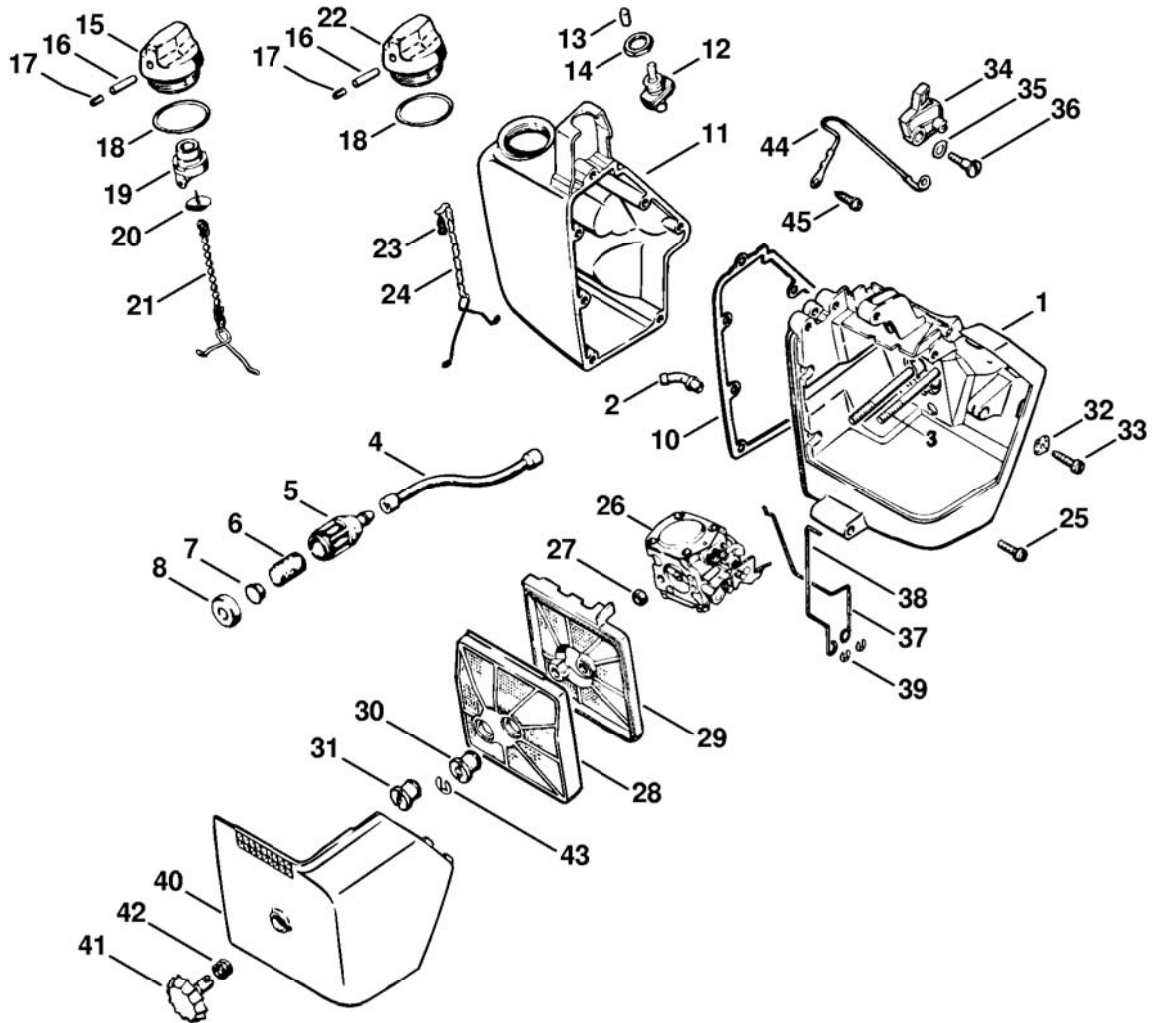
115ET013 SC

Illustration H Carburetor box, Air filter

Ref.Nr.	Item code	Quantity	Description
1	1115 140 1700	1	Carburetor box □ 2, 32, 33
2	1112 122 3900	1	Elbow connector
3	9121 319 1120	2	Stud M5x55
4	1115 358 7700	1	Hose
5	1115 350 3503	1	Pickup body □ 6 - 8
6	1110 358 1800	1	Filter
7	1115 358 8200	1	Weight
8	1115 358 2500	1	Cap
10	1115 359 0700	1	Gasket
11	1115 351 0500	1	Tank housing
12	1110 430 0202	1	Stop switch □ 13
13	1110 432 9002	1	Protecting cap
14	9211 260 1430	1	Hexagon nut M12x0.75
15	1110 350 0500	1	Filler cap (5,6) □ 16 - 21
16	1110 358 7700	1	Hose
17	1120 358 8105	1	Vent insert
18	9645 945 2820	1	O-ring 25x2.5
19	1110 353 2108	1	Valve body
20	1110 353 1600	1	Valve
21	1117 350 0901	1	Filler cap retainer
22	1110 350 0501	1	Filler cap (1,2,3,4,7,8) □ 16 - 18, 23, 24
23	1117 350 0905	1	Filler cap retainer
24	9099 021 2360	1	Self-tapping screw 3.5x9.5
25	9048 319 0680	7	Pan head screw M4x16
26	1115 120 0600	1	Carburetor HS-118B
27	9210 261 0700	2	Hexagon nut M5
	1115 120 1600	1	Air filter
	1115 120 1615	1	Air filter (B) □ 28 - 31
28	1115 120 1605	1	Air filter
28	1115 120 1620	1	Air filter, flocked (B)
29	1115 120 1610	1	Air filter
29	1115 120 1625	1	Air filter, flocked (B)
30	1113 140 9510	1	Slotted nut
31	1113 141 8305	1	Slotted nut
32	1115 121 7700	1	Guide piece
33	1115 122 6200	1	Idle speed adjustment screw

(1) 045 AV, (2) 045 AVE, (3) 045 AVRE, (4) 045 AVEQ, (5) 045 AVRSE, (6) 045 AVRSEQ, (7) 045 AVSE, (8) 045 AVSEQ

Illustration H Carburetor box, Air filter

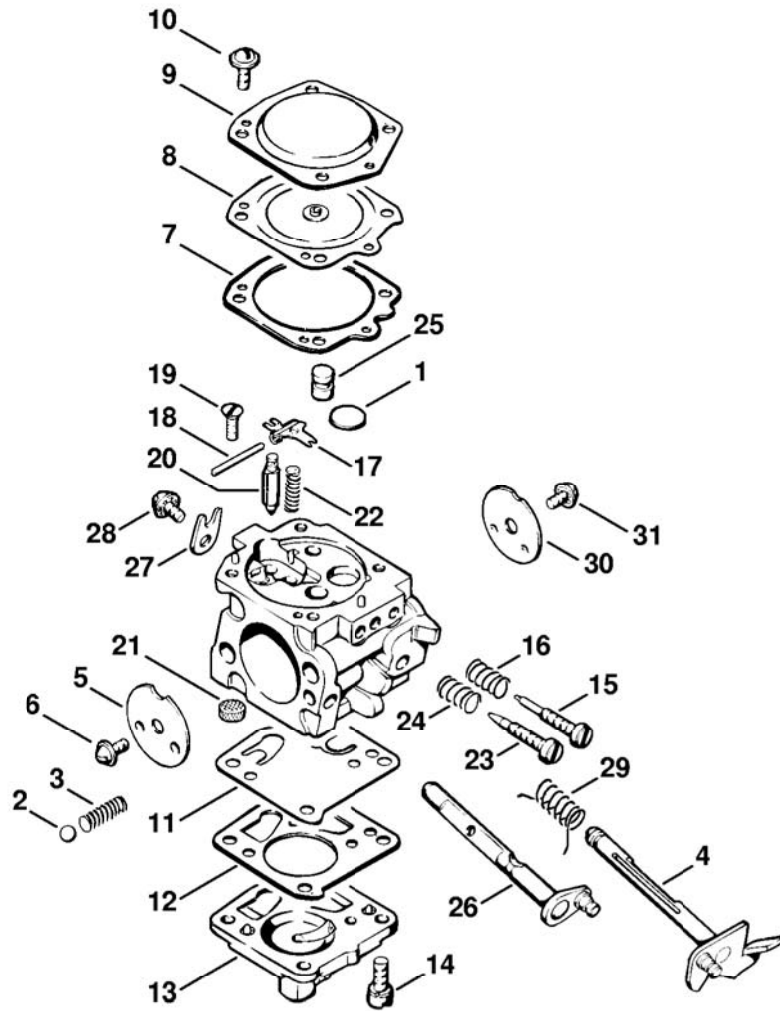


115ET013 SC

Illustration H Carburetor box, Air filter

Ref.Nr.	Item code	Quantity	Description
34	1115 185 2000	1	Choke lever
35	9322 630 0140	1	Spring washer 6
36	0000 951 2600	1	Oval head screw M4x10
37	1115 182 1500	1	Throttle rod
38	1115 185 1900	1	Choke rod
39	9460 624 0320	2	E-clip 3.2
40	1115 141 1000	1	Carburetor box cover
41	1113 140 9200	1	Twist lock
42	0000 997 0927	1	Compression spring
43	9460 624 0500	1	E-clip 5
44	1115 440 2201	1	Ground wire
45	9039 488 0630	1	Self-tapping screw M4x8

(1) 045 AV, (2) 045 AVE, (3) 045 AVRE, (4) 045 AVEQ, (5) 045 AVRSE, (6) 045 AVRSEQ, (7) 045 AVSE, (8) 045 AVSEQ



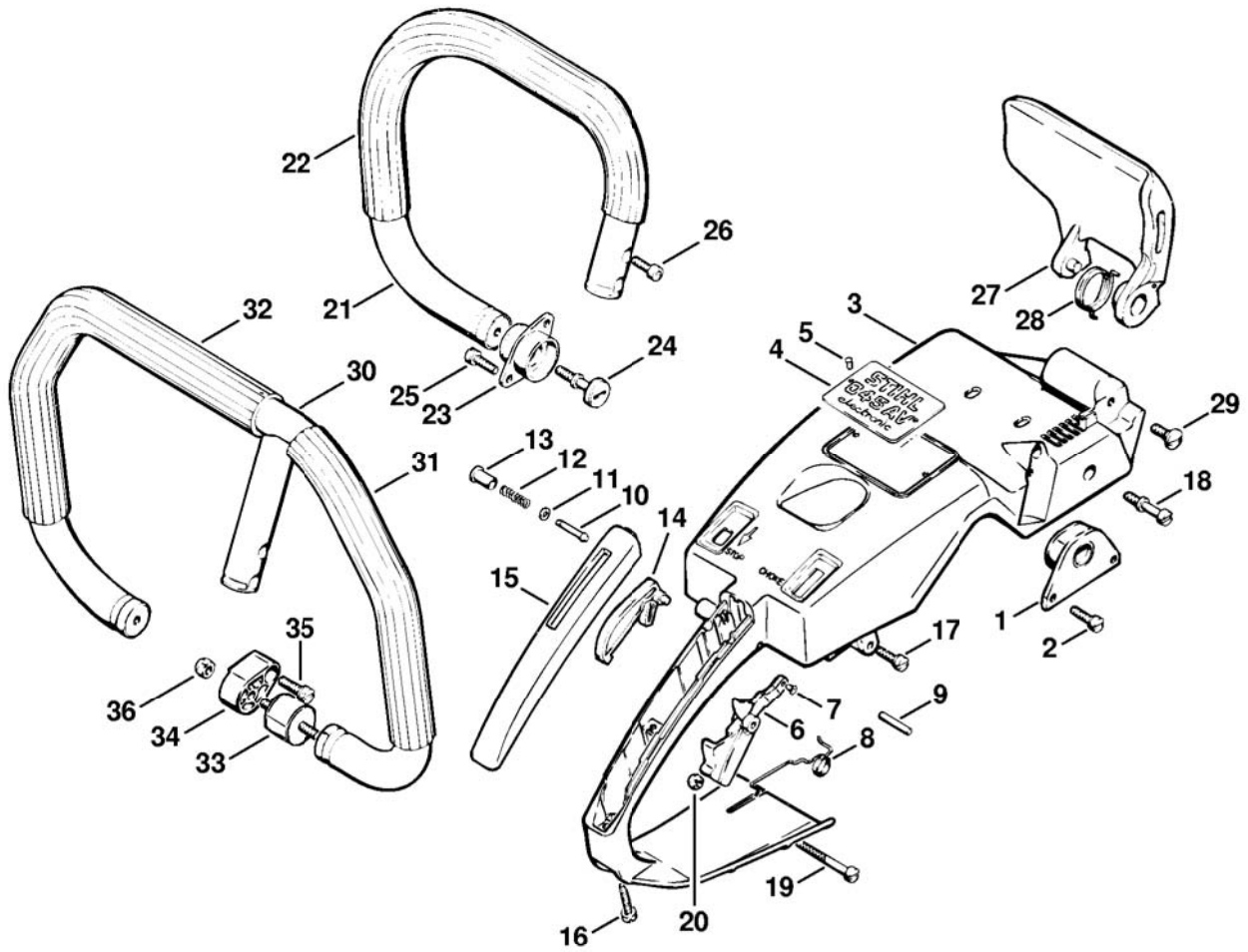
115ET014 SC

Illustration J Carburetor

Printed from MediaCat

Ref.Nr.	Item code	Quantity	Description
	1115 120 0600	1	Carburetor HS-118B □ 1 - 31
1	1110 122 9410	1	Plug
2	1110 122 4200	1	Ball
3	1110 122 3000	1	Spring
4	1115 120 7100	1	Throttle shaft with lever
5	6503 121 2910	1	Choke shutter
6	1110 122 7400	1	Round head screw
7	1110 129 0900	1	Gasket
8	1110 121 4700	1	Metering diaphragm
9	1110 121 0811	1	End cover
10	1106 122 7400	4	Round head screw
11	1110 121 4800	1	Pump diaphragm
12	1110 129 1110	1	Gasket
13	1115 121 0800	1	End cover
14	1110 122 7700	4	Oval head screw
15	1110 122 6800	1	Low speed adjustment screw
16	1110 122 3030	1	Spring
17	1110 121 5000	1	Inlet control lever
18	1110 121 9200	1	Spindle
19	1110 122 7800	1	Oval head screw
20	1110 121 5100	1	Inlet needle
21	4221 121 7800	1	Strainer
22	1110 122 3020	1	Spring
23	1111 122 6700	1	High speed adjustment screw
24	1106 122 3000	1	Spring
25	1111 121 5400	1	Valve jet
26	1115 120 7200	1	Choke shaft with lever
27	1110 122 9300	1	Clip
28	1110 122 7400	1	Round head screw
29	1110 122 3200	1	Torsion spring
30	1115 121 3300	1	Throttle shutter
31	1110 122 7400	1	Round head screw
	1115 007 1060	1	Set of carburetor parts □ 7, 8, 11, 12

(1) 045 AV, (2) 045 AVE, (3) 045 AVRE, (4) 045 AVEQ, (5) 045 AVRSE, (6) 045 AVRSEQ, (7) 045 AVSE, (8) 045 AVSEQ

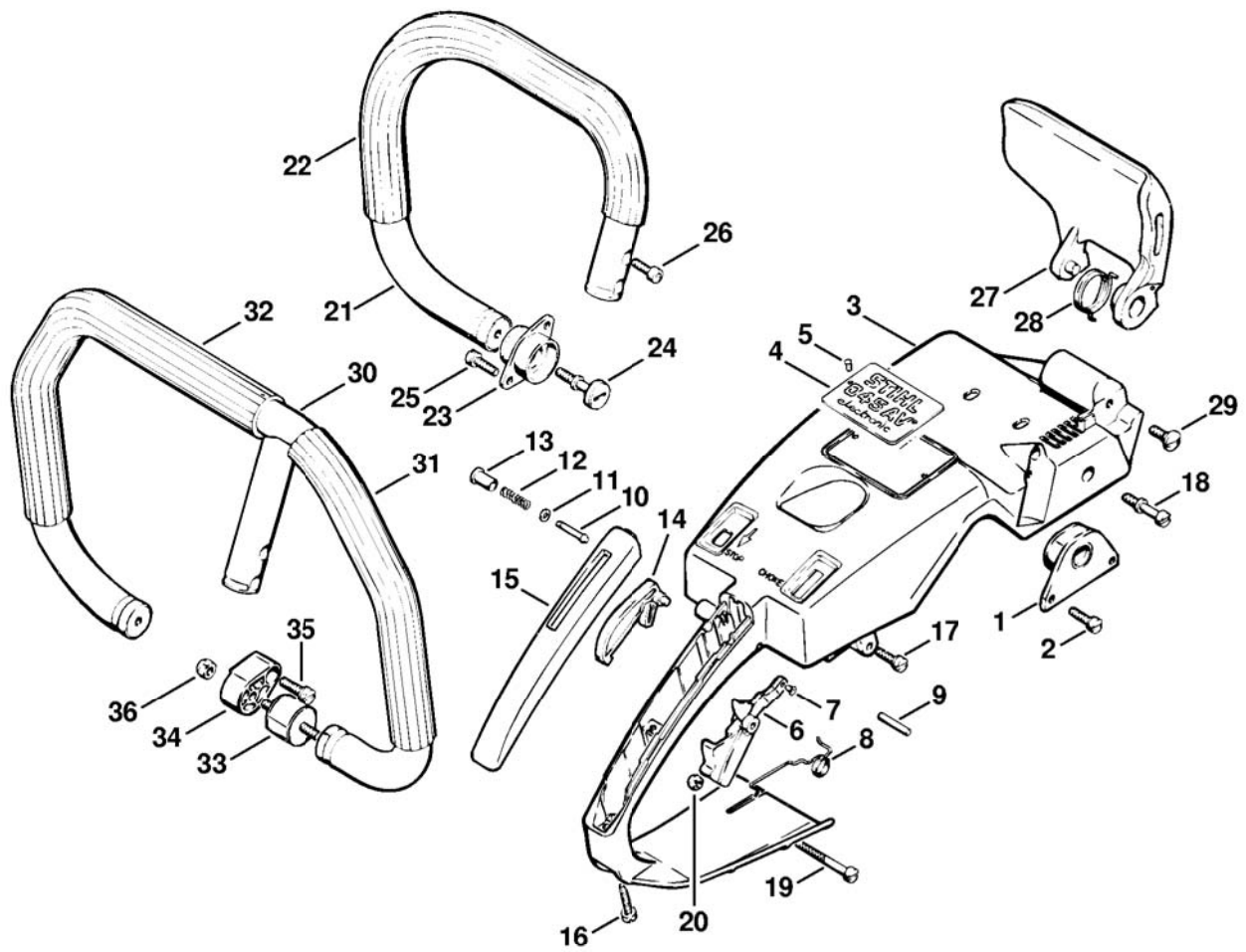


115ET015 SC

Illustration **K** Handle frame, Handle bar

Ref.Nr.	Item code	Quantity	Description
1	1115 790 9900	1	Annular buffer
2	9048 216 1010	2	Pan head screw M5x18
3	1115 791 4900	1	Handle frame
4	0000 967 1525	1	Model plate 045 AV
4	0000 967 1526	1	Model plate 045 AVE
4	0000 967 1555	1	Model plate 045 AVEO
4	0000 967 1576	1	Model plate 045 AVSE
4	0000 967 1577	1	Model plate 045 AVSEQ
5	9441 065 1270	2	Round head rivet 2.6x6
6	1115 180 1501	1	Throttle trigger □ 7
7	9415 415 2240	1	Hollow rivet 3x0.3x5
8	0000 998 1205	1	Torsion spring
9	9371 470 2640	1	Cylindrical pin 5x24
10	1113 182 8900	1	Pin
11	0000 958 0403	1	Washer
12	0000 997 0603	1	Compression spring
13	1113 182 9305	1	Starting throttle lock
14	1115 182 0801	1	Trigger interlock
15	1115 791 0601	1	Handle molding
16	9099 021 0850	1	Self tapping screw 4.8x22
17	9048 216 1010	3	Pan head screw M5x18
18	1113 791 6110	1	Collar screw
19	9043 216 1100	1	Pan head screw M5x45
20	9214 320 0700	1	Lock nut M5
21	1115 790 1700	1	Handlebar with hose (1,2,4,7,8)
22		1	Hose 395mm / 14 9/16" (1,2,4,7,8)
	0000 791 2008	1	Handle hose Ø 21 mm x 5m / 7/8x197" (B)
23	1115 790 9901	1	Annular buffer (1,2,4,7,8)
24	1115 791 6101	1	Collar screw (1,2,4,7,8)
25	9048 216 1010	2	Pan head screw M5x18 (1,2,4,7,8)
26	9036 341 1020	2	Socket head screw M5x20 (1,2,4,7,8)
27	1113 792 9103	1	Hand guard (1,2,3,5,7)
28	1113 791 8200	1	Torsion spring
29	0000 951 2904	1	Oval head screw M6x3.2x12

(1) 045 AV, (2) 045 AVE, (3) 045 AVRE, (4) 045 AVEQ, (5) 045 AVRSE, (6) 045 AVRSEQ, (7) 045 AVSE, (8) 045 AVSEQ

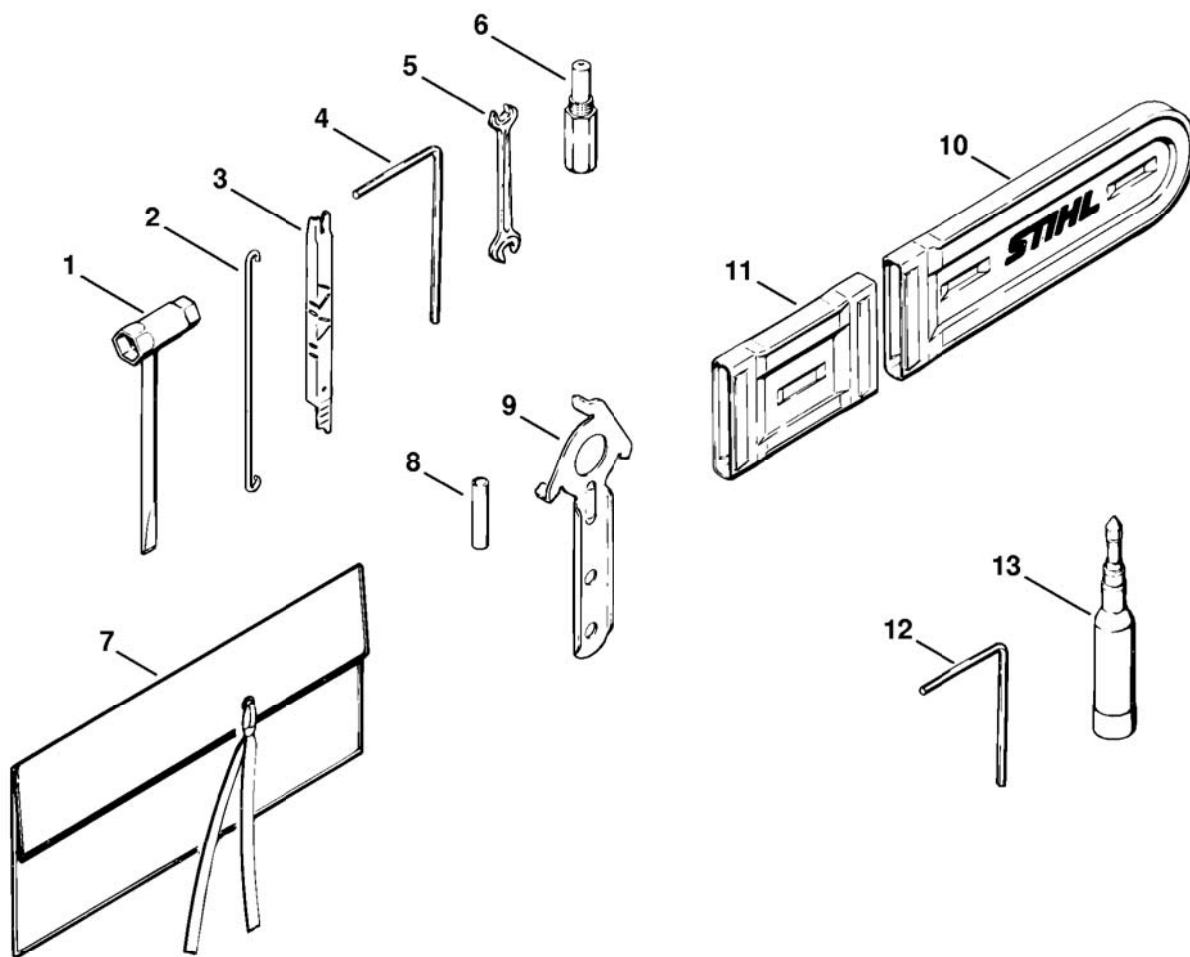


115ET015 SC

Illustration **K** Handle frame, Handle bar

Ref.Nr.	Item code	Quantity	Description
30	1115 790 3606	1	Wrap around handlebar with hose (3,5,7) □ 31, 32
31		1	Hose 220mm / 8 11/16"
32		1	Hose 370mm / 14 9/16"
	0000 791 2008	1	Handle hose Ø 21 mm x 5m / 7/8x197" (B)
33	1110 790 9600	1	Annular buffer (3,5,7)
34	1115 791 1900	1	Handlebar support (3,5,7)
35	9048 216 1320	1	Pan head screw M6x20 (3,5,7)
36	9214 320 0900	1	Lock nut M6 (3,5,7)

(1) 045 AV, (2) 045 AVE, (3) 045 AVRE, (4) 045 AVEQ, (5) 045 AVRSE, (6) 045 AVRSEQ, (7) 045 AVSE, (8) 045 AVSEQ



115ET017 SC

Ref.Nr.	Item code	Quantity	Description
	1115 890 1400	1	Tool kit □ 1 - 9
1	1110 890 3401	1	Combination wrench
2	1110 893 8800	1	Hook
3	1110 893 4000	1	Filing gauge
4	0811 270 1080	1	Allen key 4x70x130
5	0811 012 1152	1	Wrench 8x10
6	1107 191 1201	1	Locking screw
7	0000 891 0800	1	Tool roll
8	1115 893 4200	1	Tube
9	1115 893 1300	1	Wrench
10	0000 792 9111	1	Chain scabbard
11	0000 792 9132	1	Chain scabbard extension up to 63 cm Extras:
12	0811 270 1100	1	Allen key 5x110x70
13	1108 890 2500	1	Grease gun
	1115 900 5000	1	STIHL repair kit (A)

(1) 045 AV, (2) 045 AVE, (3) 045 AVRE, (4) 045 AVEQ, (5) 045 AVRSE, (6) 045 AVRSEQ, (7) 045 AVSE, (8) 045 AVSEQ