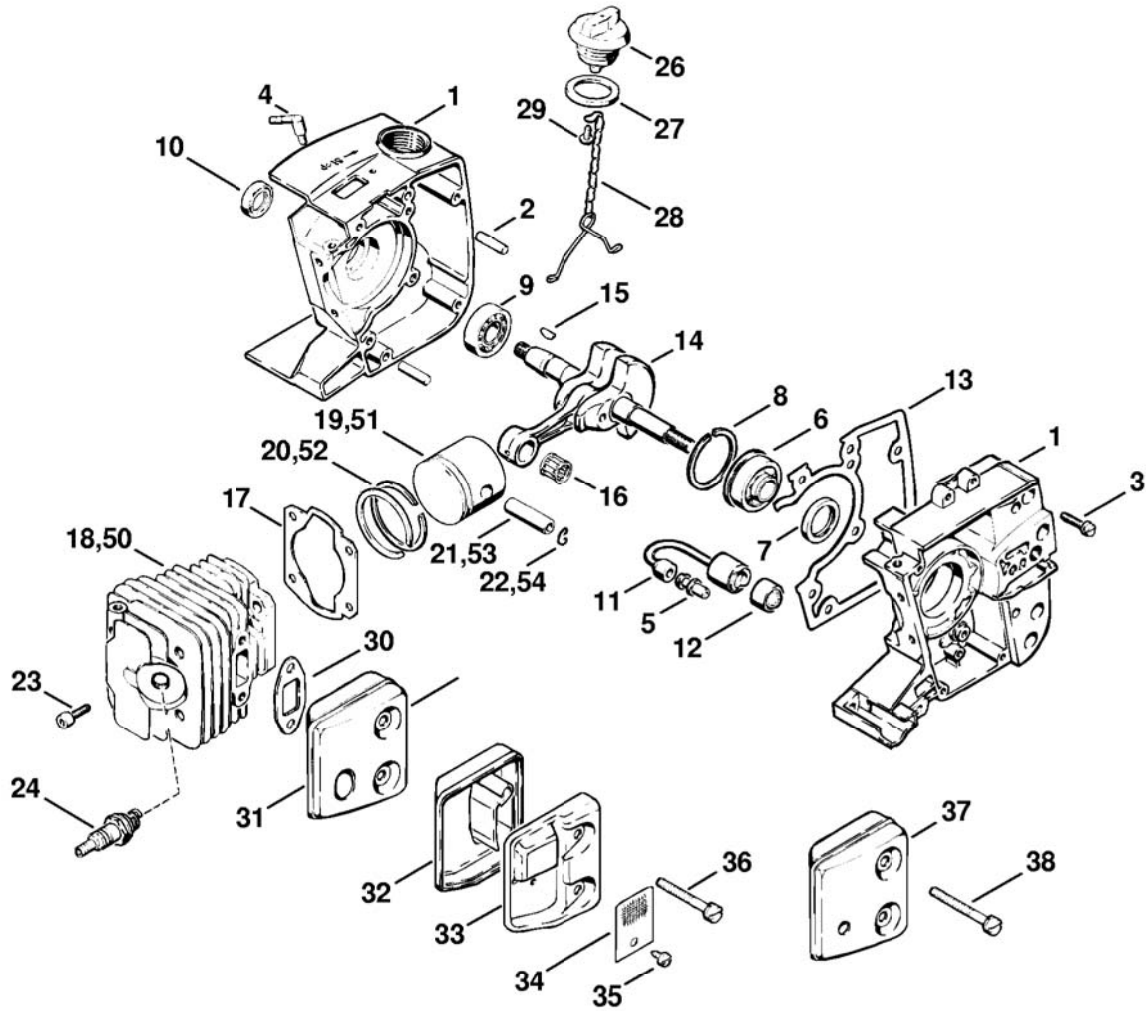


Illustration A Crankcase, Cylinder  
Printed from MediaCat



114ET000 GM

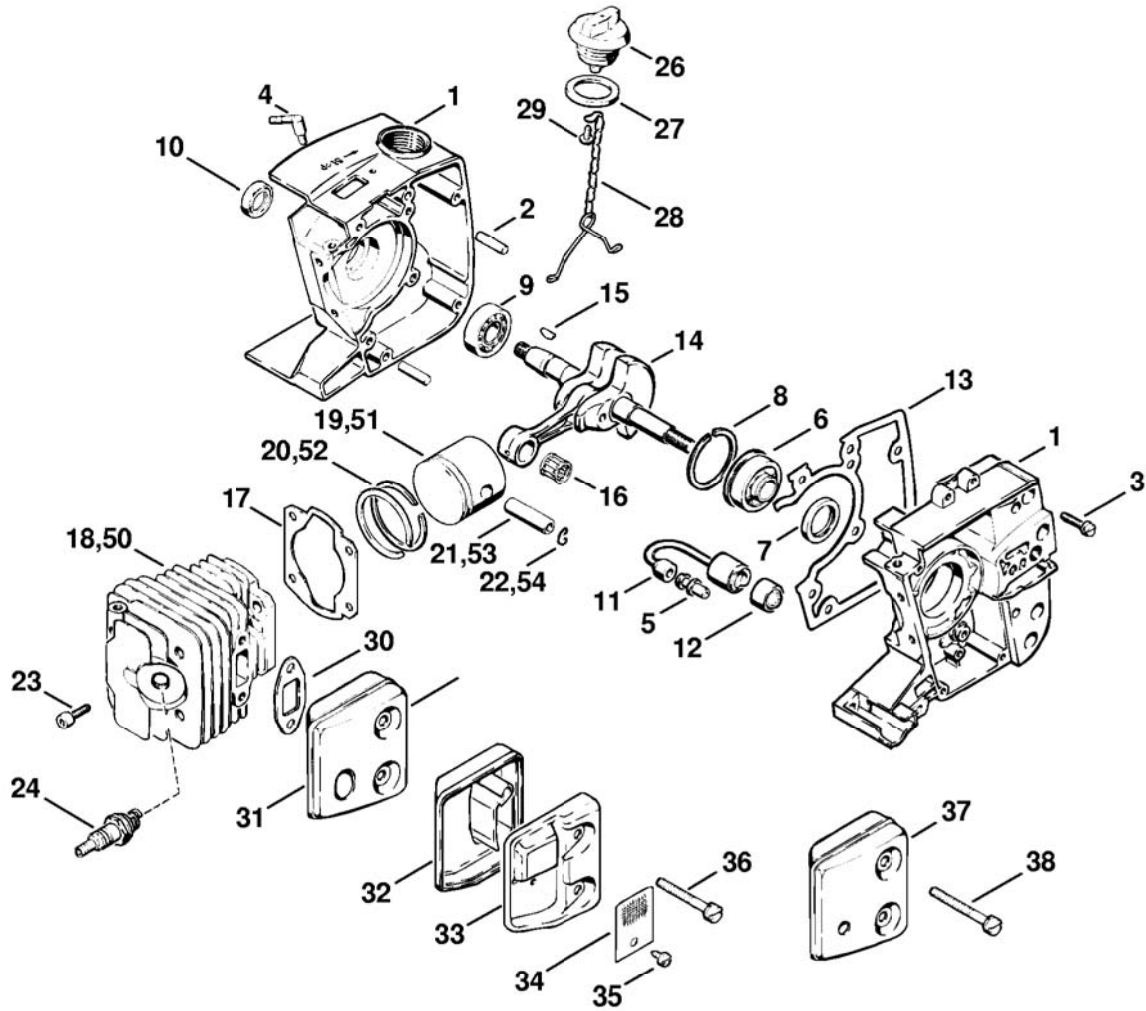
# Illustration A Crankcase, Cylinder

Printed from MediaCat

Ref.Nr.	Item code	Quantity	Description
1	1114 020 2102	1	Crankcase □ 2 - 9
1	1114 020 2107	1	Crankcase F
2	9371 470 2610	2	Cylindrical pin 5x18
3	9048 216 1010	6	Pan head screw M5x18
4	1110 122 3900	1	Elbow connector
5	0000 988 5202	1	Connector
6	9523 003 4430	1	Grooved ball bearing 12x32x13.5 □ 7
7	9640 003 1890	1	Oil seal 17.8x26.2x3.6
8	9459 620 2570	1	Snap ring 32
9	9503 003 0210	1	Grooved ball bearing 6001
10	9640 003 1190	1	Oil seal 12x20x5
11	1114 647 9400	1	Hose
12	1106 640 3801	1	Pickup body
13	1114 029 0500	1	Gasket
14	1114 030 0400	1	Crankshaft
15	1120 036 8500	1	Woodruff key 2x3.7
16	9512 003 2040	1	Needle cage 9x13x12.5
17	1114 029 2310	1	Cylinder gasket
18	1114 020 1210	1	Cylinder with piston Ø 40mm □ 19 - 22
19	1114 030 2010	1	Piston Ø 40mm □ 20 - 22
20	1114 034 3001	2	Piston ring Ø 40x1.5mm
21	1114 034 1500	1	Piston pin
22	9462 650 0900	2	Snap ring 9
23	9036 341 1010	4	Socket head screw M5x18
24	0000 400 7000	1	Spark plug NGK BPMR7A
24	1110 400 7005	1	Spark plug Bosch WSR 6 F

(0) 020

Illustration A Crankcase, Cylinder  
Printed from MediaCat



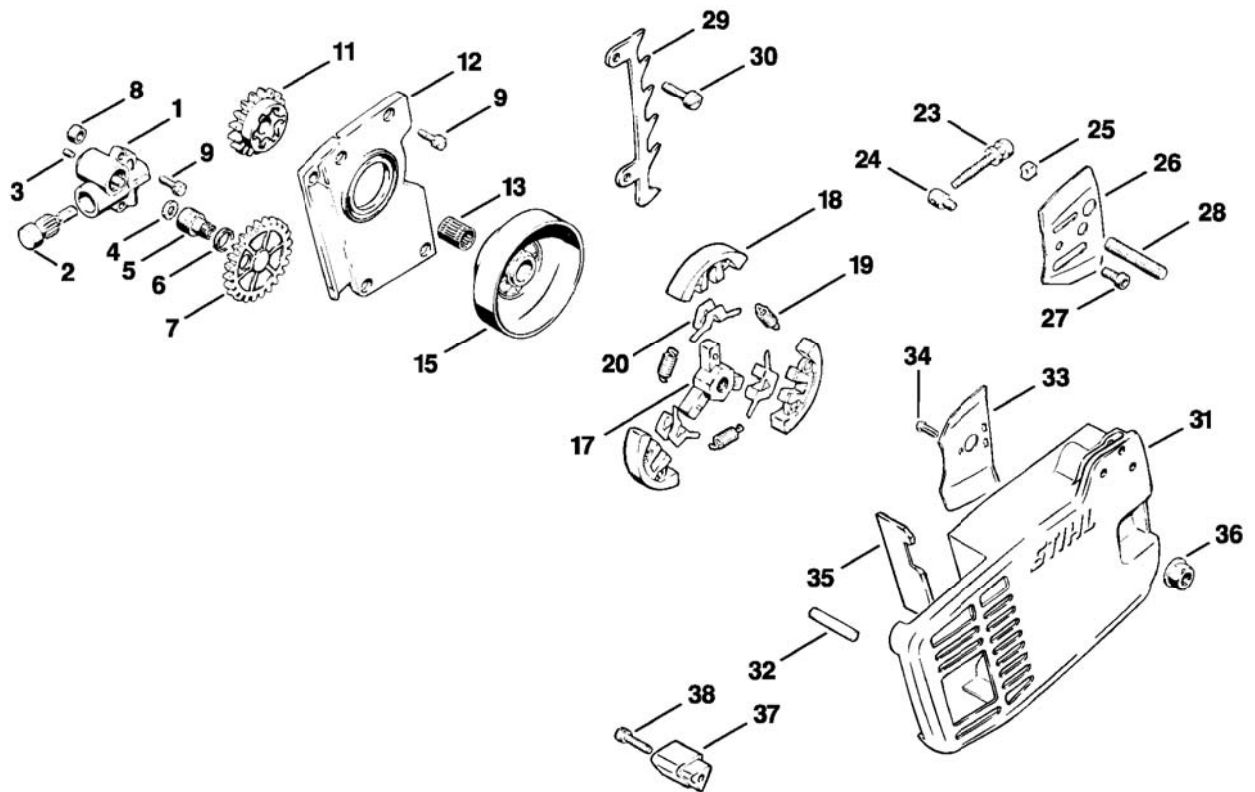
114ET000 GM

# Illustration A Crankcase, Cylinder

Ref.Nr.	Item code	Quantity	Description
26	1114 640 3600	1	Oil filler cap □ 27 - 29
27	0000 992 6305	1	Sealing ring
28	1117 350 0901	2	Filler cap retainer
29	9099 021 2360	2	Self-tapping screw 3.5x9.5
30	1114 149 0601	1	Exhaust gasket
31	1114 140 0608	1	Muffler
	1114 140 0607	1	Muffler USA □ 32 - 35
32		1	Inlet casing (D)
33		1	Outlet-shell (D)
34	1114 141 9005	1	Screen USA
35	9099 021 0810	1	Self-tapping screw 4.2x9.5
36	9049 319 1090	2	Pan head screw M5x40
37	1114 140 0613	1	Muffler F
38	9049 319 1100	2	Pan head screw M5x45 F
50	* 1114 020 1200	1	Cylinder with piston Ø 38mm → 6 243 890 (2.80) □ 51 - 54
51	*	1	Piston Ø 38mm (D) → 6 243 890 (2.80) □ 52 - 54
52	* 1114 034 3000	2	Piston ring Ø 38x1.5mm → 6 243 890 (2.80)
53	* 1114 034 1500	1	Piston pin → 6 243 890 (2.80)
54	* 9462 650 0900	2	Snap ring 9 → 6 243 890 (2.80)

(0) 020

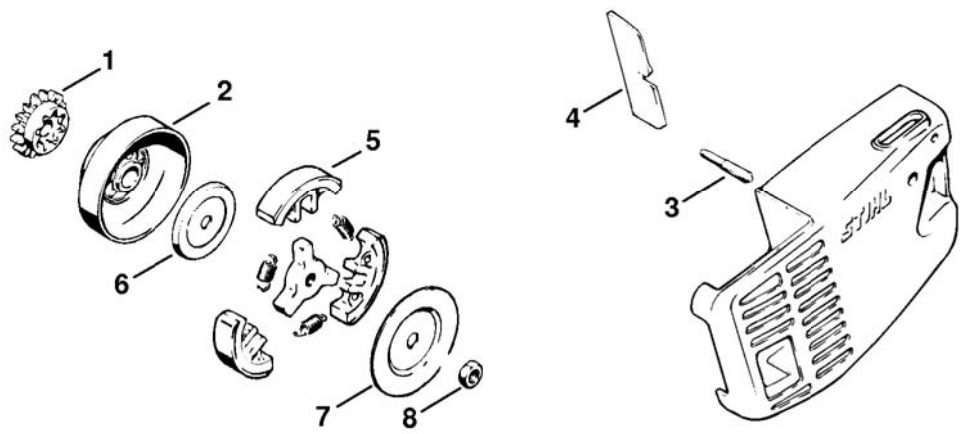
Illustration B Oil pump, Clutch  
Printed from MediaCat



114ET003 L

# Illustration B Oil pump, Clutch

Ref.Nr.	Item code	Quantity	Description
1	1114 640 3200	1	Oil pump □ 2 - 7
2	1114 647 0600	1	Pump piston
3	9517 003 5000	1	Cylindrical roller 3x5
4	0000 958 0402	1	Washer
5	1114 647 2000	1	Worm
6	9642 003 0810	1	Oil seal 9x13x3
7	1114 647 1805	1	Spur gear
8	1108 649 5000	2	Sealing ring 5x8.3x4.3
9	9048 319 0660	6	Pan head screw M4x12
11	1114 647 1812	1	Spur gear Picco
12	1114 021 1100	1	Cover
13	9512 933 2240	1	Needle cage 10x13x16
15	1114 640 2001	1	Chain sprocket 3/8" Picco 6T
	1120 160 2003	1	Clutch □ 17 - 20
17	1120 162 3200	1	Carrier
18	1129 162 0800	3	Clutch shoe
19	0000 997 5625	3	Tension spring
20	1121 162 3000	3	Retainer
23	1114 664 1600	1	Adjusting screw
24	1110 664 1500	1	Tensioning nut
25	1110 021 9000	1	Clamp
26	1114 664 1000	1	Inner side plate
27	1114 652 8900	1	Locking screw M5x12
28	9121 319 1830	1	Stud M8x25
29	1114 664 0500	1	Bumper spike
30	9048 216 1010	2	Pan head screw M5x18
31	1114 648 0404	1	Chain sprocket cover
32	9371 470 3200	1	Cylindrical pin 6x32
33	1114 664 1005	1	Outer side plate
34	9441 065 1950	1	Round head rivet 3x10
35	1114 656 1505	1	Guard plate
36	9220 260 1100	1	Hexagon nut M8
37	1114 656 7705	1	Chain catcher
38	9048 319 0710	1	Pan head screw M4x20



114ET013 GM

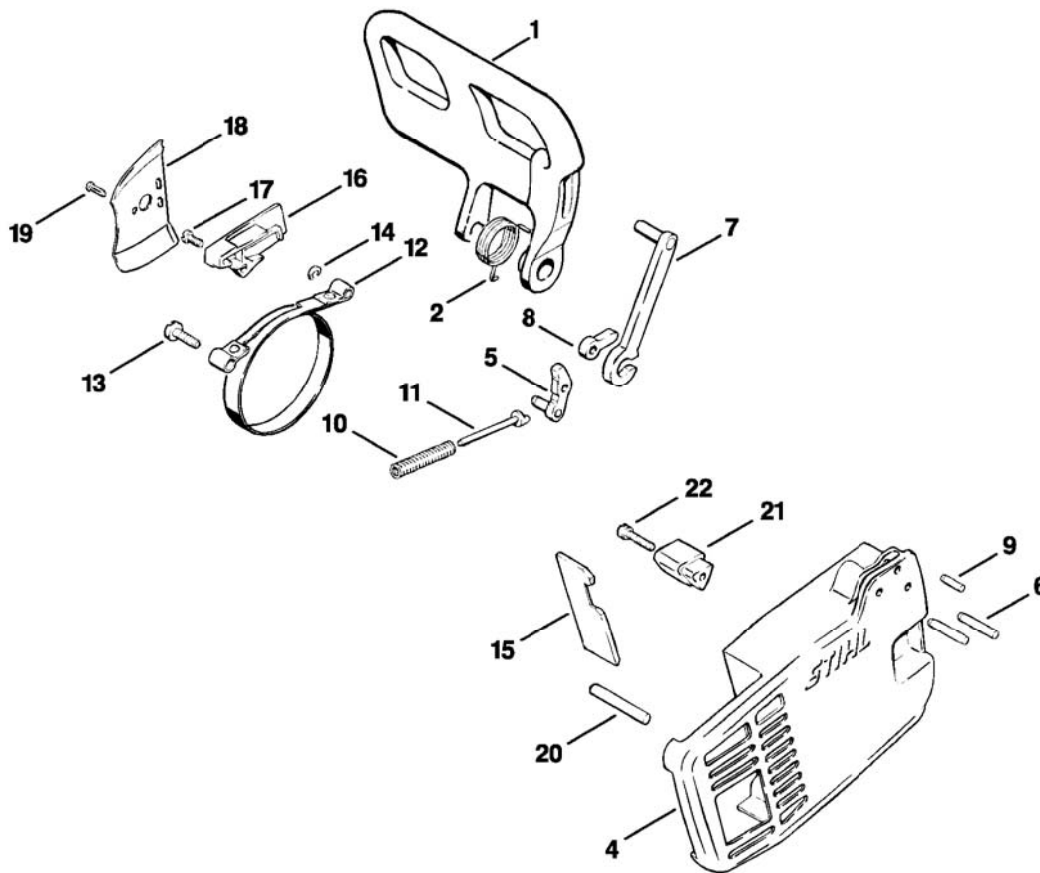
# Illustration C Clutch

---

Ref.Nr.	Item code	Quantity	Description
1	* 1114 647 1800	1	Spur gear 1/4" → 6 243 890 (2.80)
2	* 1114 640 2000	1	Chain sprocket 1/4" 8T → 6 243 890 (2.80)
3	* 0000 971 0609	1	Pin → 6 243 890 (2.80)
4	* 1114 656 1500	1	Guard plate → 6 243 890 (2.80)
5	* 1114 160 1500	3	Clutch shoe → 8 559 740 (39.81 )
6	* 1114 162 8900	1	Washer → 8 559 740 (39.81 )
7	* 1114 162 8901	1	Washer → 8 559 740 (39.81 )
8	* 9211 260 1150	1	Hexagon nut M8x1 l/h thread → 8 559 740 (39.81 )

(0) 020



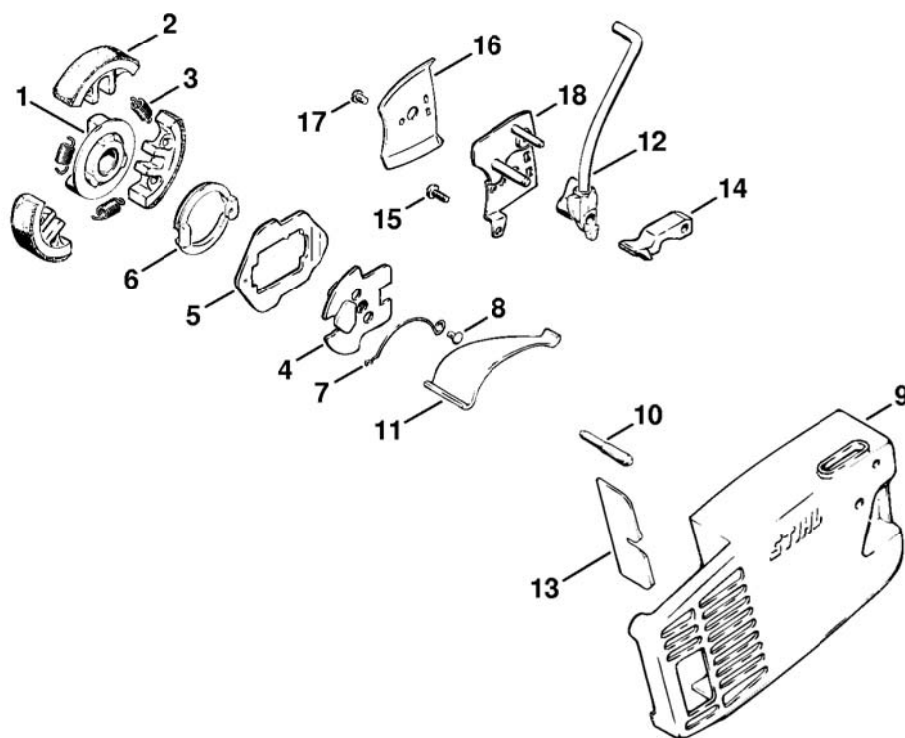


114ET005 L

Illustration D Chain brake

Ref.Nr.	Item code	Quantity	Description
1	1115 792 9105	1	Hand guard
2	0000 998 2200	1	Torsion spring
	1114 640 1708	1	Chain sprocket cover Brake band □ 4 - 20
4	1114 648 0404	1	Chain sprocket cover
5	1114 160 5002	1	Lever
6	9381 651 2640	2	Cylindrical pin 5x24
7	1114 160 5003	1	Lever
8	1114 162 5010	1	Lever
9	9381 651 2090	1	Cylindrical pin 4x14
10	1114 162 7803	1	Compression spring
11	1114 162 5230	1	Pin
12	1114 160 5401	1	Brake band
13	9079 319 0980	1	Flat head screw M5x16
14	9468 621 0330	1	Circlip 6x0.7
15	1114 656 1505	1	Guard plate
16	1114 648 7700	1	Cover
17	9048 319 0650	1	Pan head screw M4x10
18	1114 664 1005	1	Outer side plate
19	9441 065 1950	1	Round head rivet 3x10
20	9371 470 3240	1	Cylindrical pin 6x40
21	1114 656 7705	1	Chain catcher
22	9048 319 0710	1	Pan head screw M4x20
	* 1114 007 1004	1	Chain brake kit → 6 243 890 (2.80) □ 1 - 20

Illustration E Chain brake with isolating clutch

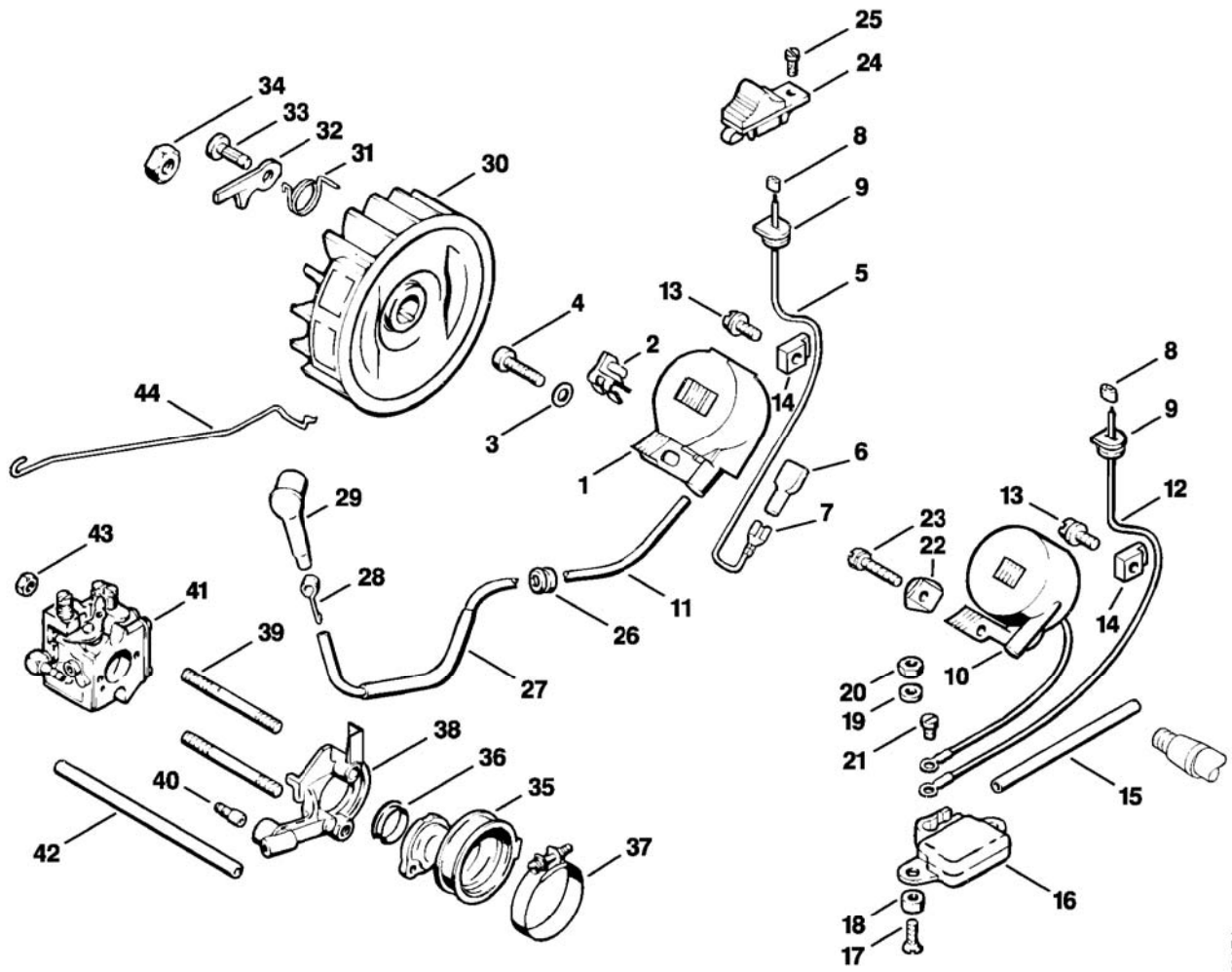


114ET022 GM

# Illustration E Chain brake with isolating clutch

Ref.Nr.	Item code	Quantity	Description
1	* 1114 160 2300	1	Carrier → 6 243 890 (2.80)
2	* 1114 160 1500	3	Clutch shoe → 6 243 890 (2.80)
3	* 0000 997 5625	3	Tension spring → 6 243 890 (2.80)
	* 1114 160 3400	1	Drive disc → 6 243 890 (2.80) □ 4 - 8
4	* 1114 162 3600	1	Drive disc → 6 243 890 (2.80)
5	* 1114 162 3900	1	Slide control → 6 243 890 (2.80)
6	* 1114 160 4000	1	Locking slide → 6 243 890 (2.80) □ 7, 8
7	*	1	Spring washer (D) → 6 243 890 (2.80)
8	* 1113 162 1200	1	Rivet → 6 243 890 (2.80)
9	* 1114 640 1705	1	Chain sprocket cover → 6 243 890 (2.80) □ 10 - 18
10	* 0000 971 0609	1	Pin (D) → 6 243 890 (2.80)
11	*	1	Trapezoidal spring → 6 243 890 (2.80)
12	* 1114 640 2300	1	Cam → 6 243 890 (2.80)
13	* 1114 656 1500	1	Guard plate → 6 243 890 (2.80)
14	* 1114 640 2800	1	Brake shoe → 6 243 890 (2.80)
15	* 9079 319 0650	2	Flat head screw M4x10 → 6 243 890 (2.80)
16	* 1114 664 1005	1	Outer side plate → 6 243 890 (2.80)
17	* 9441 065 1950	1	Round head rivet 3x10 → 6 243 890 (2.80)
18	*	1	Cover plate (D) → 6 243 890 (2.80)

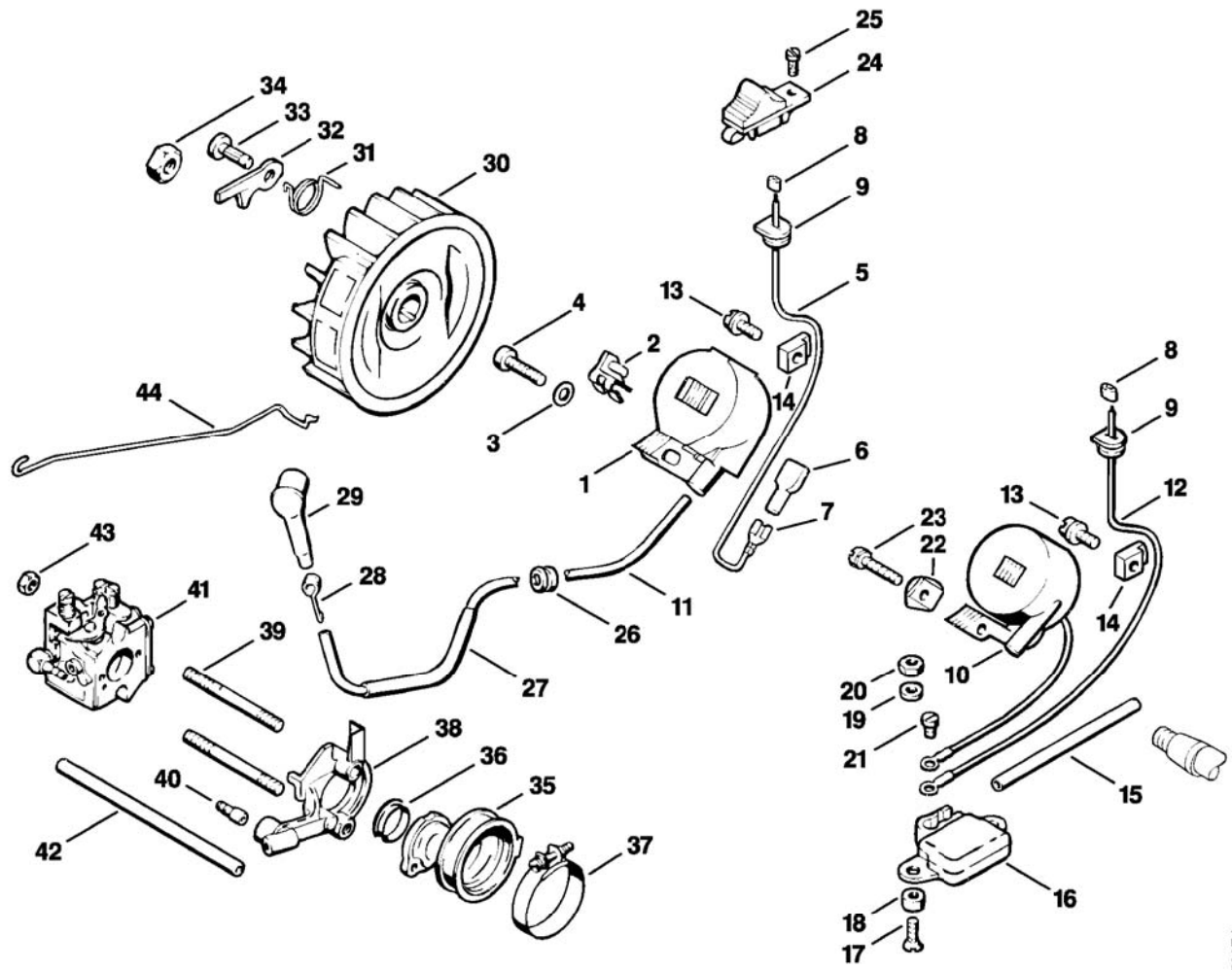
(0) 020



114ET007 L

Illustration **F** Ignition system

Ref.Nr.	Item code	Quantity	Description
1	0000 400 1306	1	Ignition module □ 2, 3, 6, 7
2	0000 448 1200	1	Lead retainer
3	9291 021 0121	2	Washer 5.3
4	9022 371 0710	2	Spline screw IS-M4x20
5	1114 440 1104	1	Short circuit wire □ 6 - 9
6	0751 030 8470	1	Grommet
7	0751 030 8958	1	Terminal socket 4.8-1
8	1114 442 7000	1	Contact sleeve
9	1114 405 0805	1	Grommet
10	1114 404 3200	1	Ignition coil F □ 11
11		1	Ignition lead 230mm
	0000 405 0600	1	Ignition lead 1m
12	1114 440 1106	1	Short circuit wire F □ 8, 9
13	9021 319 0670	1	Pan head screw M4x14
14	1114 448 1200	1	Lead retainer
15	1113 405 8800	1	Hose F
16	1114 400 1005	1	Trigger unit F
17	9062 319 0660	2	Countersunk screw M4x12 F
18	1114 405 1800	2	Sleeve F
19	9294 021 0100	2	Washer 4.3 F
20	9210 260 0600	2	Hexagon nut M4 F
21	9041 216 0300	1	Pan head screw M3x4 F
22	1114 405 1900	1	Bracket F
23	9048 319 0710	2	Pan head screw M4x20 F
24	1114 430 0200	1	Stop switch
25	9039 488 0340	1	Self-tapping screw M3x8
26	0000 989 0801	1	Grommet
27	1113 405 8800	1	Hose
28	0000 998 0603	1	Torsion spring
29	1106 405 1000	1	Spark plug boot

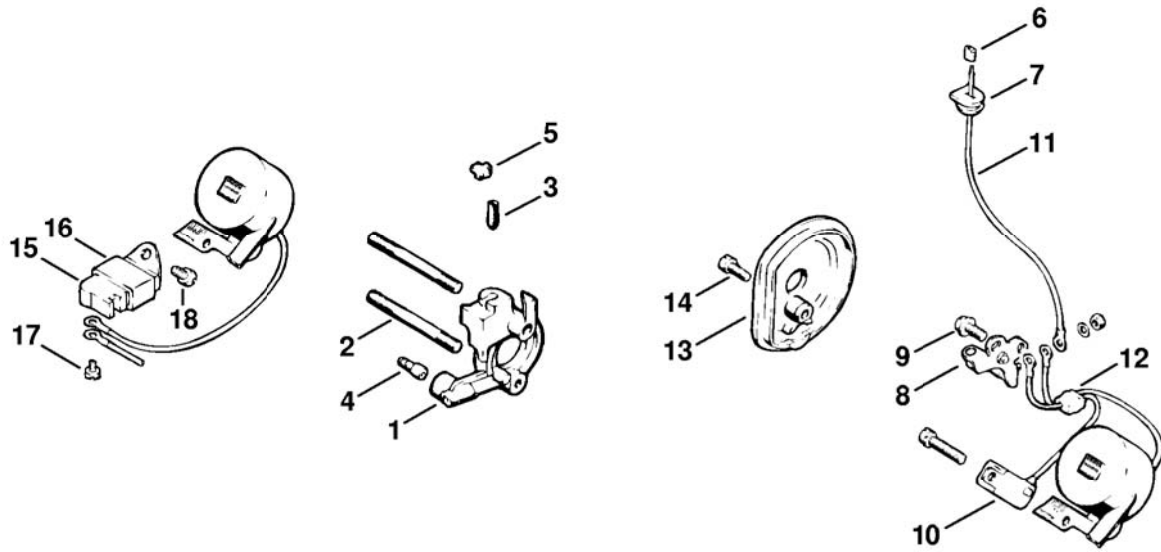


114ET007 L

Illustration F Ignition system

Ref.Nr.	Item code	Quantity	Description
30	1114 400 1211	1	Flywheel □ 31 - 33
31	0000 998 1104	2	Torsion spring
32	1114 195 7200	2	Pawl
33	1114 195 7800	2	Pin
34	9210 261 1140	1	Hexagon nut M8x1
35	1114 141 2200	1	Manifold
36	1114 141 1805	1	Sleeve
37	9771 021 2580	1	Hose clip Ø 34x7
38	1114 120 2201	1	Flange □ 39, 40
39	0000 953 0806	2	Stud M5x43
40	0000 988 5204	1	Connector
41	1114 120 0604	1	Carburetor WT-15A
42	1119 141 8600	1	Impulse hose 106mm / 4.2"
43	9210 260 0700	2	Hexagon nut M5
44	1114 182 1502	1	Throttle rod



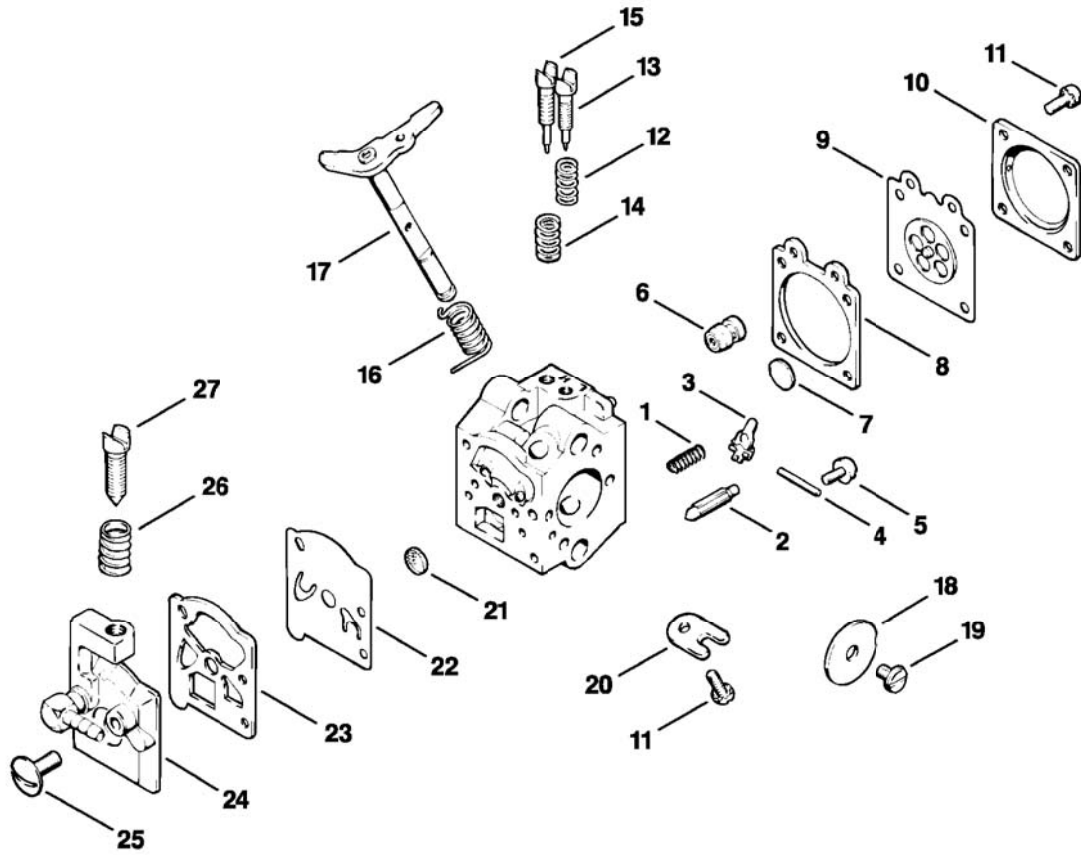


114ET019 GM

Illustration **G** Ignition system

Ref.Nr.	Item code	Quantity	Description
1	* 1114 120 2200	1	Flange → 6 757 060 (36.80) □ 2 - 5
2	* 0000 953 0806	2	Stud M5x43 → 6 757 060 (36.80)
3	* 1114 122 6200	1	Idle speed adjustment screw → 6 757 060 (36.80)
4	* 0000 988 5204	1	Connector → 6 757 060 (36.80)
5	* 1114 121 7700	1	Clamp → 6 757 060 (36.80)
6	* 1114 442 7000	1	Contact sleeve
7	* 1114 405 0805	1	Grommet
8	* 1113 400 2000	1	Set of points
9	* 9047 319 0650	2	Pan head screw M4x10
10	* 1114 404 3405	1	Capacitor
11	* 1114 440 1105	1	Short circuit wire □ 6, 7
12	* 1114 405 0800	1	Grommet
13	* 1114 404 8100	1	Cover
14	* 9048 319 0660	1	Pan head screw M4x12
15	* 1118 400 1001	1	Trigger unit → 26 518 178 (7.93)
16	* 1114 405 8800	1	Hose → 26 518 178 (7.93)
17	* 9041 216 0300	1	Pan head screw M3x4 → 26 518 178 (7.93)
18	* 9041 216 0610	1	Pan head screw M4x6 → 26 518 178 (7.93)

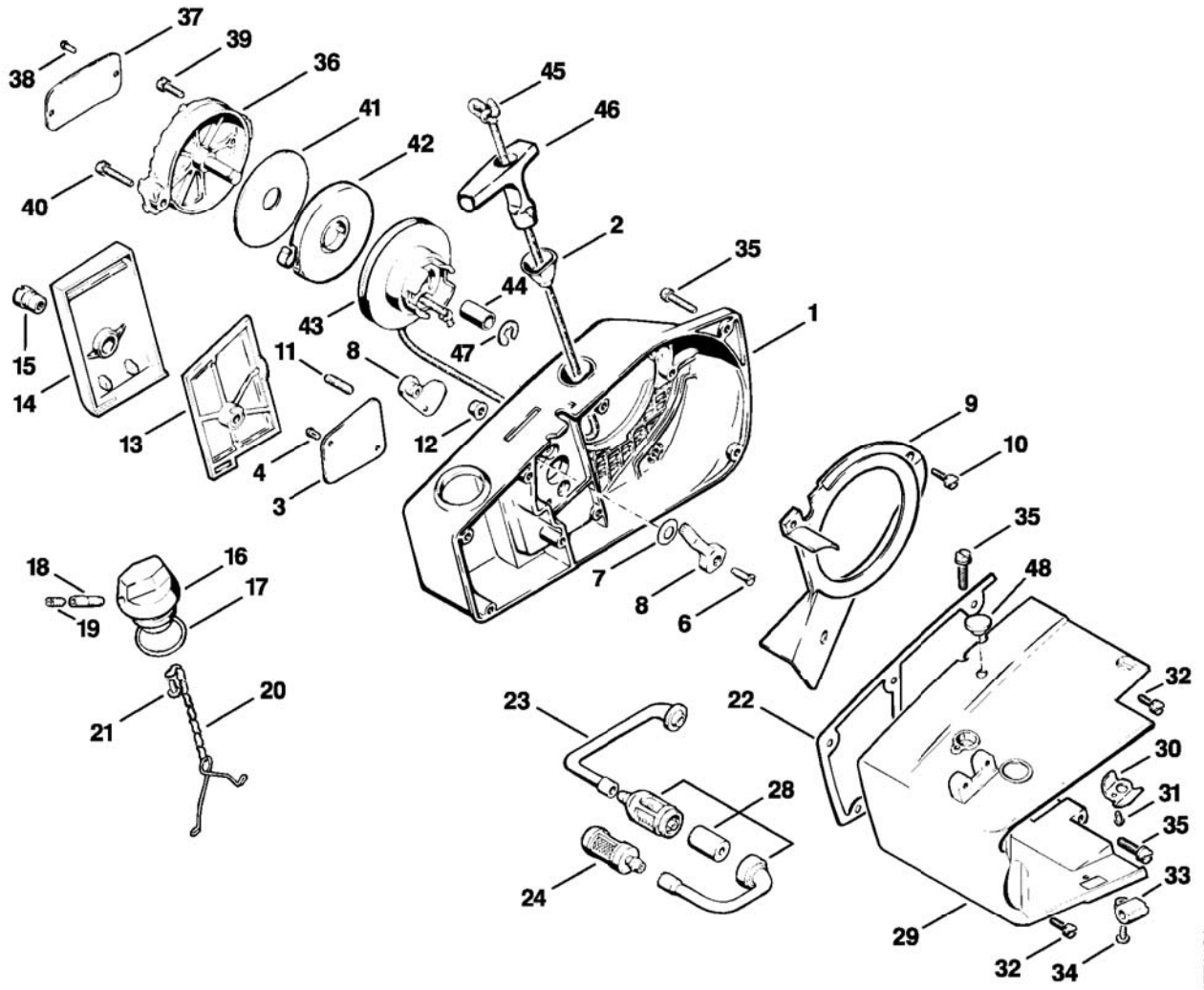
(0) 020



114ET009 L

Illustration H Carburetor WT-15A

Ref.Nr.	Item code	Quantity	Description
	1114 120 0604	1	Carburetor WT-15A □ 1 - 27
1	1114 122 3005	1	Spring
2	1110 121 5100	1	Inlet needle
3	1113 121 5000	1	Inlet control lever
4	1113 121 9200	1	Spindle
5	1114 122 7400	1	Round head screw
6	1120 121 5405	1	Valve jet
7	4117 122 9402	1	Plug
8	1120 129 0900	1	Gasket
9	1113 121 4705	1	Metering diaphragm
10	1114 121 0805	1	End cover
11	1106 122 7400	5	Round head screw
12	1110 122 3030	1	Spring
13	1120 122 6805	1	Low speed adjustment screw
14	1106 122 3000	1	Spring
15	1120 122 6705	1	High speed adjustment screw
16	1114 122 3200	1	Torsion spring
17	1114 120 7105	1	Throttle shaft with lever
18	1114 121 3300	1	Throttle shutter
19	1110 122 7400	1	Round head screw
20	1110 122 9300	1	Clip
21	1114 121 7800	1	Strainer
22	1121 121 4801	1	Pump diaphragm
23	1120 129 0905	1	Gasket
24	1114 121 0812	1	End cover
25	1114 122 7100	1	Screw
26	1116 122 3015	1	Spring
27	1116 122 6200	1	Idle speed adjustment screw

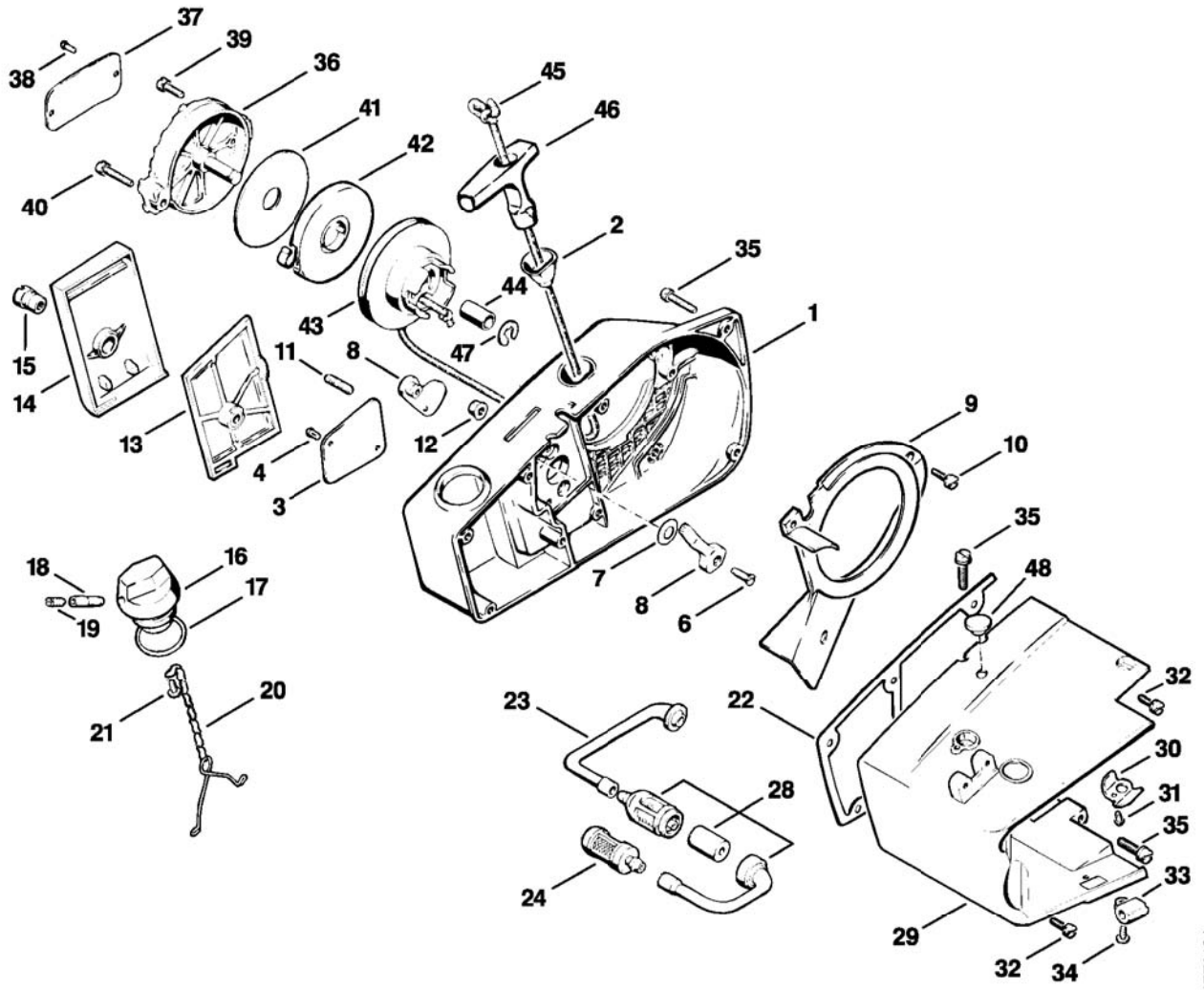


114ET010 L

Illustration J Rewind starter  
 Printed from MediaCat

Ref.Nr.	Item code	Quantity	Description
1	1114 080 1803	1	Fan housing □ 2
2	1110 084 9102	1	Bushing
3	1114 967 1509	1	Model plate 020 AVSE
3	1114 967 1508	1	Model plate 020 AVSEQ
4	9441 065 1270	2	Round head rivet 2.6x6
6	9097 021 2400	1	Countersunk screw 3.5x13
7	9322 630 0180	1	Spring washer 8
8	1114 007 1006	1	Set of choke shutter
9	1114 084 7800	1	Segment
10	9048 319 0660	3	Pan head screw M4x12
11	0000 953 0800	1	Stud
12	9216 261 0700	2	Hexagon nut M5
13	1114 120 1600	1	Air filter
13	1114 120 1605	1	Air filter, flocked (B)
14	1114 141 0510	1	Filter cover
15	1114 141 8300	1	Slotted nut
16	1114 350 0501	1	Filler cap □ 17 - 21
17	9645 945 2620	1	O-ring 23x2.5
18	1110 353 8102	1	Insert
19	0000 951 5800	1	Grub screw
20	1117 350 0901	1	Filler cap retainer
21	9099 021 2360	1	Self-tapping screw 3.5x9.5
22	1114 359 0700	1	Gasket
23	1114 358 7700	1	Hose
24	0000 350 3500	1	Pickup body
28	1114 007 1014	1	Double pickup body kit (B)

(0) 020

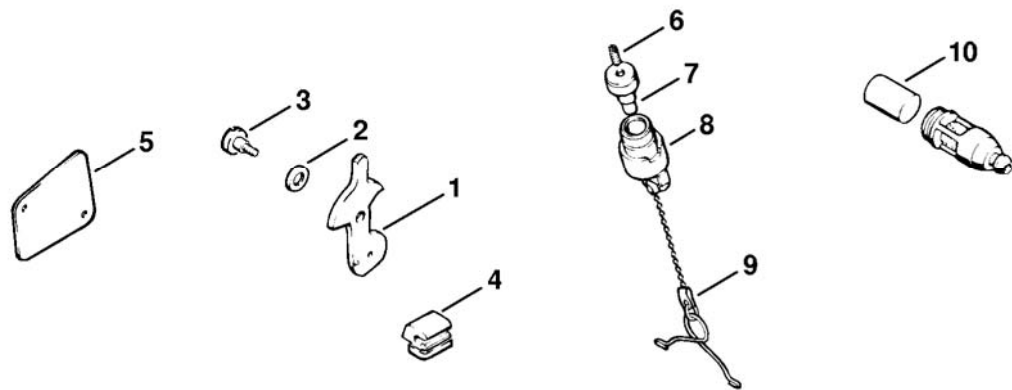


114ET010 L

Illustration J Rewind starter

Ref.Nr.	Item code	Quantity	Description
29	1114 350 0801	1	Tank housing □ 30, 31
30	1114 353 2200	1	Insulating plate
31	9441 065 1270	1	Round head rivet 2.6x6
	0000 967 3541	1	Instruction label (A) USA
32	9048 319 0660	5	Pan head screw M4x12
33	1114 432 9205	1	Support
34	9099 021 2360	1	Self-tapping screw 3.5x9.5
35	9048 216 1010	5	Pan head screw M5x18
36	1114 190 0400	1	Starter cover □ 37, 38
37	0000 967 2020	1	Nameplate STIHL
38	0000 974 1000	2	Round head rivet 3x6
39	9048 319 0660	1	Pan head screw M4x12
40	9048 319 0710	1	Pan head screw M4x20
41	1114 195 9000	1	Washer
42	1114 190 0600	1	Rewind spring
43	1114 190 1005	1	Rope rotor □ 44
44	0000 963 1001	1	Bushing
45	1113 195 8200	1	Starter rope Ø 3.5x960mm
46	1121 195 3400	1	Starter grip
47	9460 624 0700	1	E-clip 7
48	9302 929 0840	1	Plug





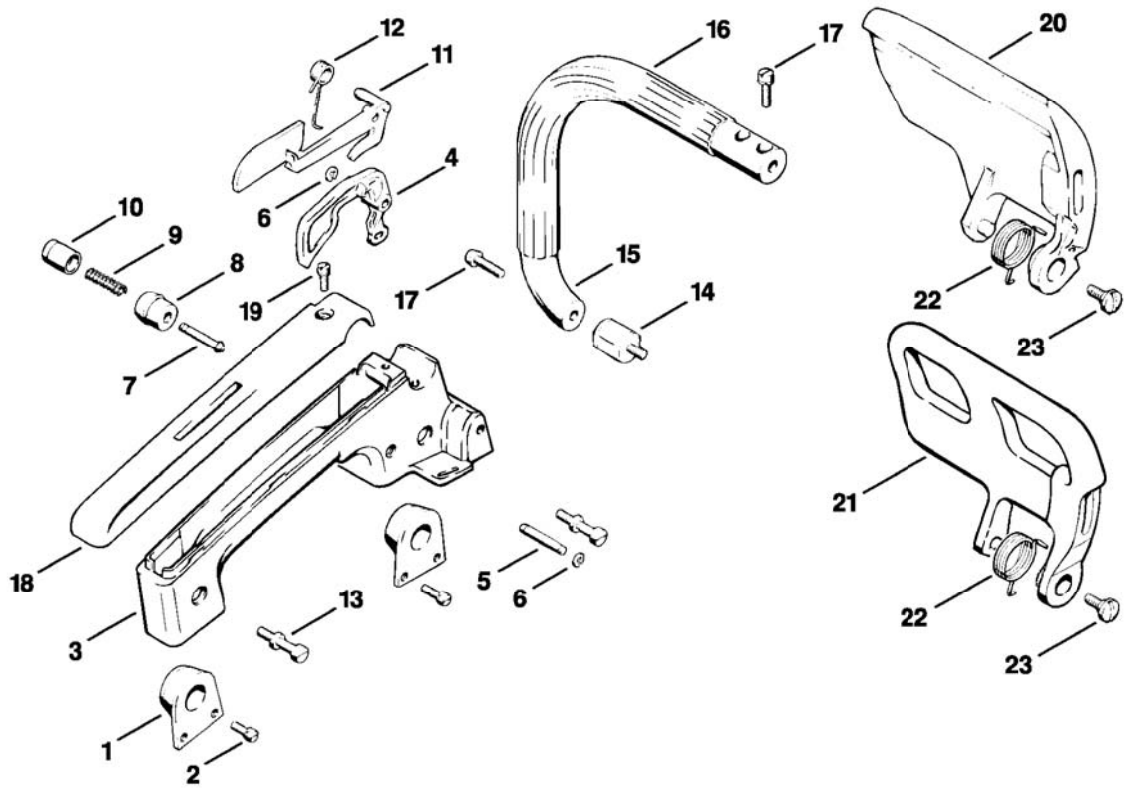
114ET020 GM

Illustration **K** Rewind starter  
Printed from MediaCat

---

Ref.Nr.	Item code	Quantity	Description
1	* 1114 121 2900	1	Choke shutter → 8 410 150 (32.74)
2	* 9322 630 0140	1	Spring washer 6 → 8 410 150 (32.74)
3	* 0000 951 1702	1	Spline screw → 8 410 150 (32.74)
4	* 1114 432 9200	1	Support → 9 771 099 (46.76)
5	* 0000 967 1538	1	Model plate 020 AV → 6 243 890 (2.80)
5	* 1114 967 1506	1	Model plate 020 AVS → 6 243 890 (2.80)
5	* 1114 967 1501	1	Model plate 020 AVPSQ → 6 243 890 (2.80)
5	* 1114 967 1502	1	Model plate 020 AVPSE → 6 243 890 (2.80)
5	* 1114 967 1503	1	Model plate 020 AVPSEQ → 6 243 890 (2.80)
6	* 0000 951 5800	1	Grub screw
7	* 1110 353 8100	1	Insert
8	* 1110 353 2108	1	Valve body
9	* 1117 350 0905	1	Filler cap retainer
10	* 1110 358 1800	1	Filter

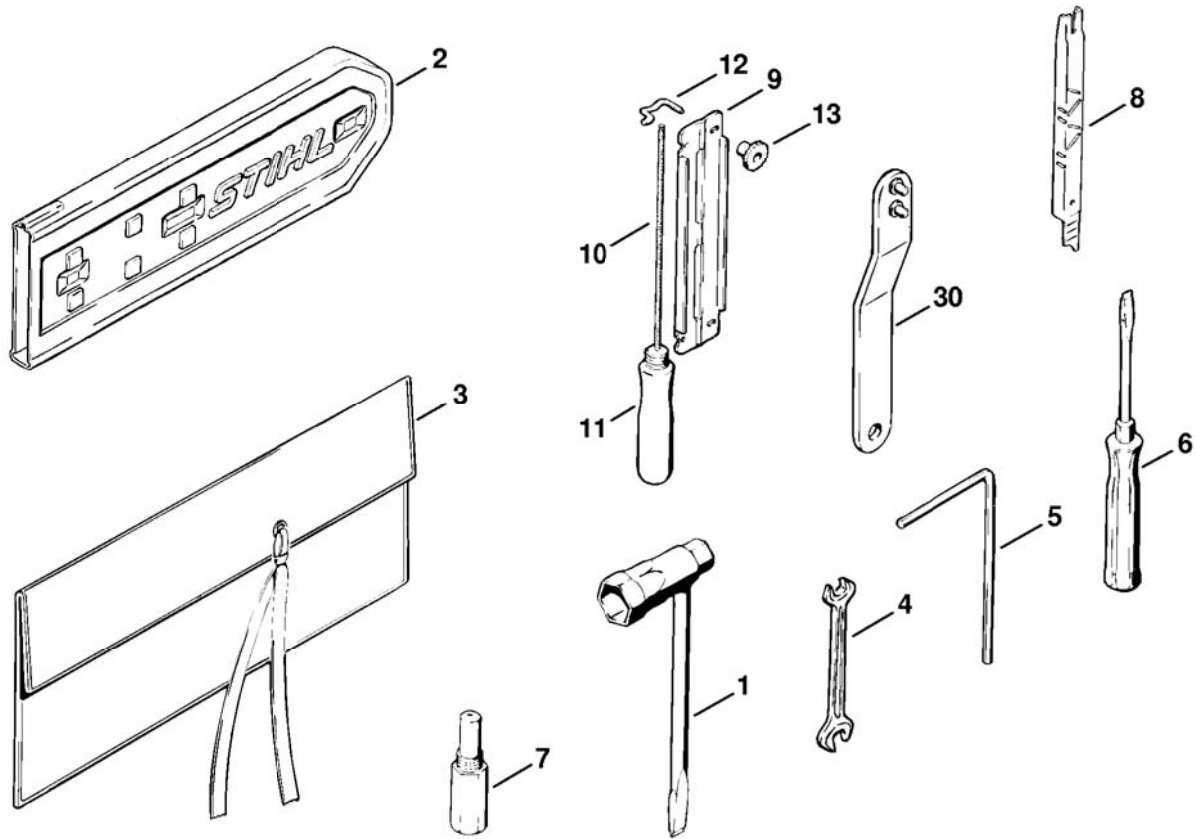
(0) 020



114ET012 L

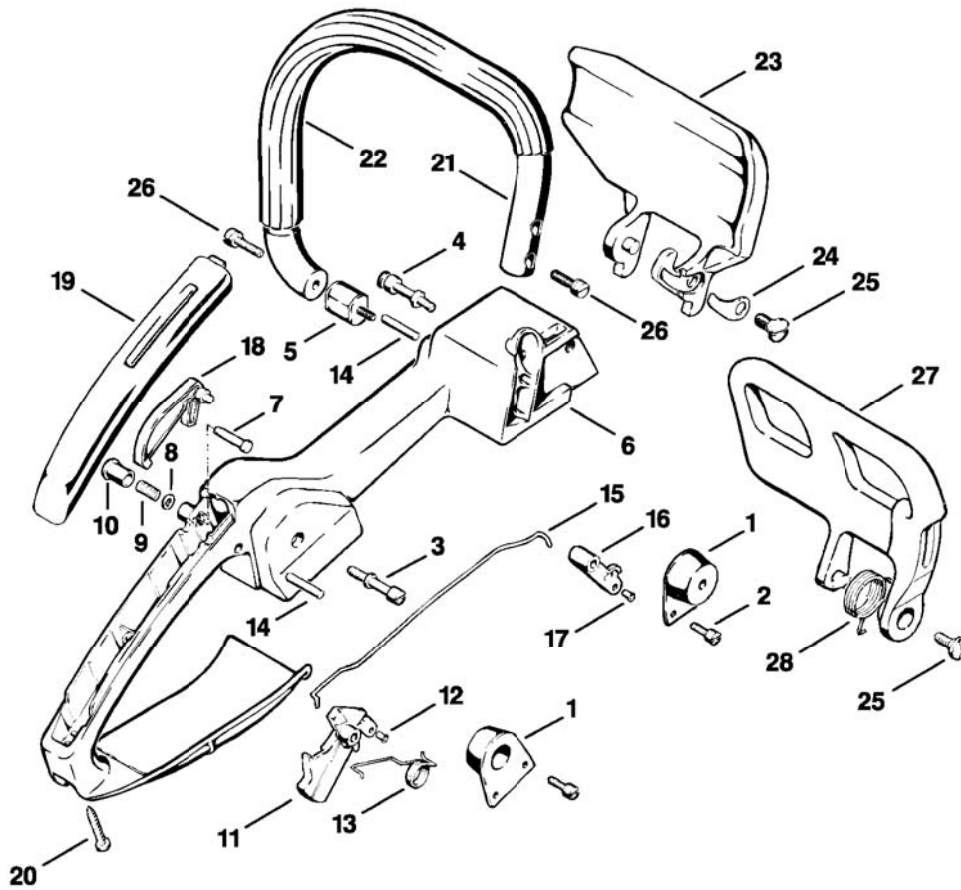
# Illustration L Handle

Ref.Nr.	Item code	Quantity	Description
1	1114 790 9900	2	Annular buffer
2	9048 319 0660	4	Pan head screw M4x12
3	1114 791 0301	1	Handle
4	1114 182 1000	1	Throttle trigger
5	0000 973 6600	1	Pin
6	9460 624 0320	2	E-clip 3.2
7	1114 182 8900	1	Pin
8	1114 182 7300	1	Bushing
9	0000 997 0607	1	Compression spring
10	1114 182 9300	1	Starting throttle lock
11	1114 182 0800	1	Trigger interlock
12	0000 998 0700	1	Torsion spring
13	1113 791 6110	2	Collar screw
14	1114 790 9605	1	Annular buffer
15	1114 790 1705	1	Handlebar with hose 295mm / 11 5/8"
16	0000 791 2004	1	Handle hose Ø 18 mm x 5m / 3/4x197"
17	9048 216 1010	3	Pan head screw M5x18
18	1114 791 0600	1	Handle molding
19	9044 319 0660	1	Pan head screw M4x12
20	1113 792 9104	1	Hand guard
21	1115 792 9105	1	Hand guard
22	0000 998 2200	1	Torsion spring
23	0000 951 2904	1	Oval head screw M6x3.2x12



114ET021 GM

Ref.Nr.	Item code	Quantity	Description
			Tools:
1	1114 890 3401	1	Combination wrench
2	0000 792 9128	1	Chain scabbard
			Extras:
	1114 890 1400	1	Tool kit □ 3 - 7
3	0000 891 0801	1	Tool roll
4	0811 012 1152	1	Wrench 8x10
5	0811 270 1080	1	Allen key 4x70x130
6	0000 890 2300	1	Screwdriver
7	1107 191 1201	1	Locking screw
8	1110 893 4000	1	Filing gauge
9	5605 750 4311	1	File holder □ 10 - 13
10	0811 411 8068	1	Round file Ø 3.5x150mm
11	0811 490 7780	1	File handle A80
12	5605 752 8300	2	Bow
13	5605 752 7700	2	Nut
	1114 007 1050	1	Set of gaskets (A)
	1114 007 1060	1	Set of carburetor parts (A)
	1120 007 1064	1	Set of carburetor parts WT (A)
	0000 930 2251	1	Ignition lead 10m (A)
	0000 930 2207	1	Fuel hose 3m / 118" (A)
	0000 930 2203	1	Starter rope Ø 3.5mm x 30.5m (A)
30 *	1113 890 3600	1	Wrench → 6 243 890 (2.80)



114ET016 L

Illustration N Professional-Handle

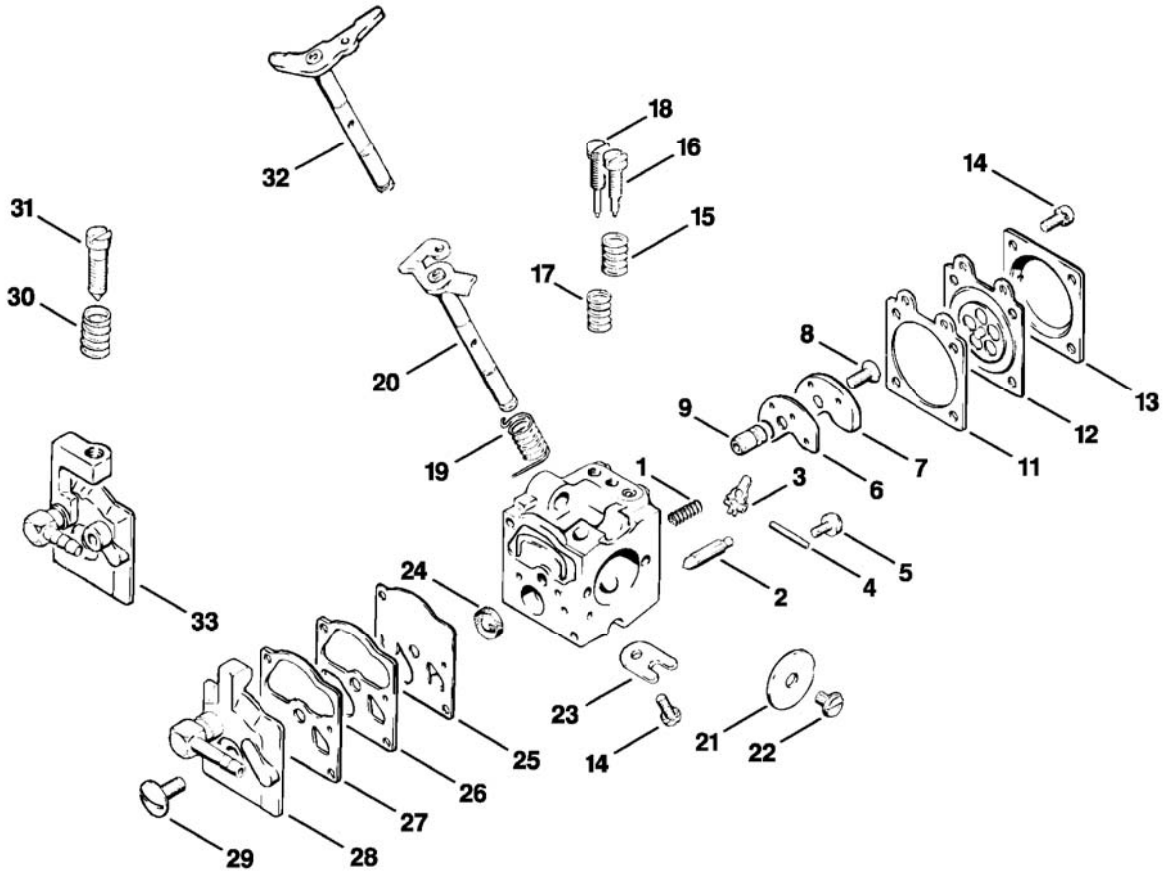
Printed from MediaCat

Ref.Nr.	Item code	Quantity	Description
1	1114 790 9900	2	Annular buffer
2	9048 319 0660	4	Pan head screw M4x12
3	1113 791 6110	1	Collar screw
4	1117 791 6100	1	Coller screw
5	1114 790 9605	1	Annular buffer
	1114 007 1000	1	Attachment kit professional handle □ 6 - 26
6	1114 791 0305	1	Handle
7	1113 182 8901	1	Pin
8	0000 958 0403	1	Washer
9	0000 997 0603	1	Compression spring
10	1113 182 9305	1	Starting throttle lock
11	1114 180 1502	1	Throttle trigger □ 12
12	9415 415 2240	1	Hollow rivet 3x0.3x5
13	0000 998 1205	1	Torsion spring
14	9371 470 2640	2	Cylindrical pin 5x24
15	1114 182 1503	1	Throttle rod
16	1114 180 1401	1	Lever □ 17
17	9415 415 2240	1	Hollow rivet 3x0.3x5
18	1115 182 0801	1	Trigger interlock
19	1115 791 0601	1	Handle molding
20	9099 021 0850	1	Self tapping screw 4.8x22
21	1114 790 1715	1	Handlebar with hose 334mm / 13 3/16"
22	0000 791 2004	1	Handle hose Ø 18 mm x 5m / 3/4x197" (B)
23	1114 792 9100	1	Hand guard
24	1114 792 3200	1	Flat spring
25	0000 951 2904	1	Oval head screw M6x3.2x12
26	9048 216 1010	3	Pan head screw M5x18
27	1115 792 9105	1	Hand guard
28	0000 998 2200	1	Torsion spring

(0) 020



Printed from MediaCat



114ET017 L

Illustration  Carburetor WA-1D, WA-86D

Ref.Nr.	Item code	Quantit	Description
	* 1114 120 0601	1	Carburetor WA-1D Carburetor WA-86D → 6 757 060 (36.80) □ 1 - 29
1	* 1114 122 3000	1	Spring → 6 757 060 (36.80)
2	* 1110 121 5100	1	Inlet needle → 6 757 060 (36.80)
3	* 1113 121 5000	1	Inlet control lever → 6 757 060 (36.80)
4	* 1113 121 9200	1	Spindle → 6 757 060 (36.80)
5	* 1114 122 7400	1	Round head screw → 6 757 060 (36.80)
6	* 1113 129 0905	1	Gasket → 6 757 060 (36.80)
7	* 1114 121 7401	1	Plate → 6 757 060 (36.80)
8	* 1114 122 7900	1	Countersunk screw → 6 757 060 (36.80)
9	* 1114 121 5400	1	Valve jet → 6 757 060 (36.80)
11	* 1113 129 0900	1	Gasket → 6 757 060 (36.80)
12	* 1113 121 4705	1	Metering diaphragm → 6 757 060 (36.80)
13	* 1114 121 0805	1	End cover → 6 757 060 (36.80)
14	* 1106 122 7400	5	Round head screw → 6 757 060 (36.80)
15	* 1110 122 3030	1	Spring → 6 757 060 (36.80)
16	* 1120 122 6800	1	Low speed adjustment screw → 6 757 060 (36.80)
17	* 1106 122 3000	1	Spring → 6 757 060 (36.80)
18	* 1120 122 6701	1	High speed adjustment screw → 6 757 060 (36.80)
19	* 1114 122 3200	1	Torsion spring → 6 757 060 (36.80)
20	* 1114 120 7100	1	Throttle shaft with lever → 6 757 060 (36.80)
21	* 1114 121 3300	1	Throttle shutter → 6 757 060 (36.80)
22	* 1110 122 7400	1	Round head screw → 6 757 060 (36.80)
23	* 1110 122 9300	1	Clip → 6 757 060 (36.80)
24	* 1114 121 7800	1	Strainer → 6 757 060 (36.80)
25	* 1114 121 4800	1	Pump diaphragm → 6 757 060 (36.80)
26	* 1114 129 0900	1	Gasket → 6 757 060 (36.80)
27	* 1114 121 4600	1	Suction chamber diaphragm → 6 757 060 (36.80)
28	* 1114 121 0810	1	End cover → 6 757 060 (36.80)
29	* 1114 122 7100	1	Screw → 6 757 060 (36.80)
30	* 1116 122 3015	1	Spring → 6 757 060 (36.80)
31	* 1116 122 6200	1	Idle speed adjustment screw → 6 757 060 (36.80)
32	* 1114 120 7105	1	Throttle shaft with lever → 6 757 060 (36.80)
33	* 1114 121 0811	1	End cover → 6 757 060 (36.80)