

REMINGTON



SUPER 880

**OPERATING INSTRUCTIONS
AND SERVICE MANUAL**

REMINGTON ARMS COMPANY, INC.

POWER TOOLS DEPARTMENT

PARK FOREST

ILLINOIS

Remington



SAFETY FIRST!

1. Never operate your chain saw in an unventilated room
2. Keep all parts of the body away from moving, cutting chain.
3. Always shut off engine when carrying saw from one location to another.
4. Do not touch chain at any time with engine running.
5. In all cutting operations, be positive that you have a clear area in which to work, a secure place to stand, and a safe "get away" position to move to when felling.
6. When making a cut, run engine until chain is free of log, then slow down engine. Chain should keep cutting until bar is free of cut.
7. Do not operate the saw when it is in need of repair.
8. When mixing fuel or refueling the engine, observe fire precautions.
9. Avoid spilling fuel by overfilling tank. Use a gas can with a flexible spout.
10. Be certain when mixing fuel to use correct amount of oil. Be sure to use the type of oil recommended by the unit manufacturer. (REMINGTON 2-Cycle Engine Oil No. 48411 - 16 parts gas to 1 part oil.)
11. Remove your saw from refueling area before starting engine.
12. Keep your saw clean of dirt, saw dust, oil and grease.
13. Keep your muffler in good condition; that is, free of carbon. Replace screen as necessary. A clogged muffler usually is an indication of improper oil used in the fuel mix - this creates numerous malfunctions of the engine. Never run your engine without the muffler and screen installed.
14. Keep the spark plug and electrical wiring connections tight.
15. Keep fire extinguisher within easy reach.
16. At all times, be careful in your smoking habits.



Remington

CHAIN SAWS

REMINGTON SUPER 880
CHAIN SAW SPECIFICATIONS

ONE CYLINDER

TWO-CYCLE

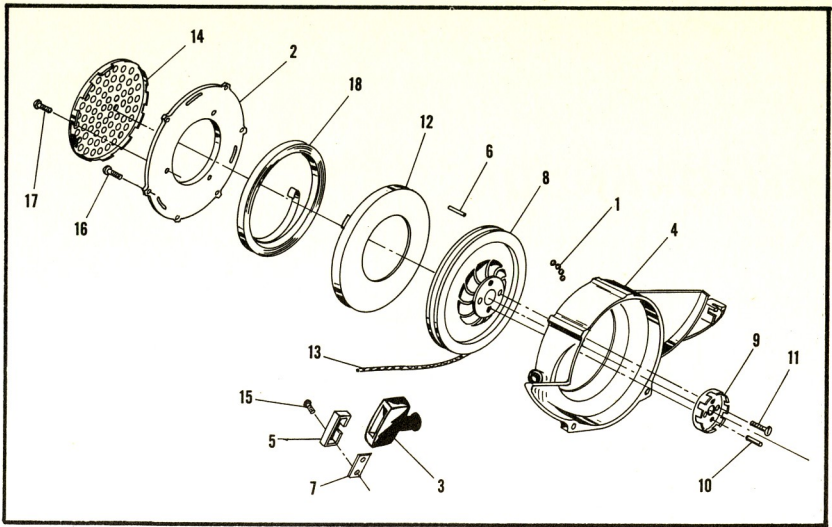
BORE:	2¼ Inches
STROKE:	1-29/64 Inches
DISPLACEMENT:	5.8 Cubic Inches
FIRING TIME:	26° Before Top Dead Center of Piston Travel
BREAKER POINT SETTING:	.020 Inch
SPARK PLUG GAP OPENING:	.025 Inch
FUEL-OIL MIXTURE:	16:1 (One Pint Remington 2- Cycle Engine Oil per two gal. Regular Gasoline)
SPARK PLUG TYPE:	Remington No. 25671
GAS TANK CAPACITY:	50.0 OZ.
OIL TANK CAPACITY:	16.0 OZ.
CHAIN OILER:	Manually Operated
COLOR:	Red and White
CLUTCH:	Dry – Centrifugal Engagement
TYPE OF BEARINGS:	Roller and Thrust
TYPE OF CARBURETOR:	Diaphragm
TYPE OF STARTER:	Rewind

May, 1962



Remington

CHAIN SAWS



3. Place end of rope at top and center and away from slot in insert.
4. Form figure "S" around screw holes. Insert two screws in screw holes. Place plate in insert and tighten screws.
5. Rewind spring and retainer assembly over pulley. Tap spring fully into recess.
6. Install cover matching cover recesses over retainer tabs.
7. Rotate cover one and a half (1½) turns clockwise to pretension spring – then install the six cover screws.
8. Assemble starter to saw and replace four screws.



Remington

CHAIN SAWS

C. MAGNETO TIMING:

This operation should be performed by your REMINGTON Recommended Chain Saw Dealer.

1. Loosen the two magneto mounting plate screws (12).
2. Rotate the magneto until the two pointed ends (13) of the magneto line up opposite the two lines (14) marked on the cover housing (15).
3. Tighten screws (12).

Recheck the breaker point gap after retiming the engine. Replace gasket and breaker point cover, securing it with the clip – install fan and starter housing assembly.

STARTER ASSEMBLY

A. DISASSEMBLY:

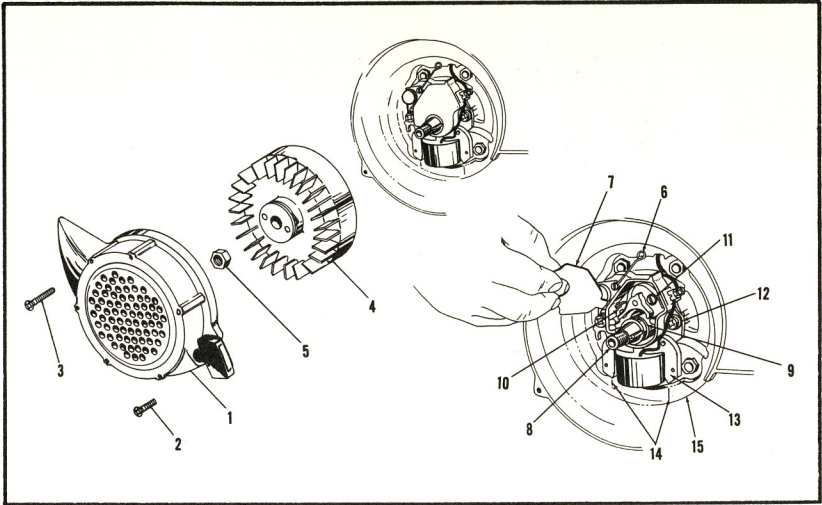
1. Remove three screws (17), holding the starter assembly (4) to the frame of the saw and one handle brace screw.
2. Remove six screws (16) holding the cover (2). Removal of these screws from the cover releases the rewind spring (18) tension.
3. Lift rewind spring (18) and its retainer (12) from pulley (8).
4. Remove handle (3) from rope (13) by prying plate (5) out of handle with screwdriver. Remove two screws (15), rope (13), plate (5) and insert (7).
5. Remove pulley (8) and rope (13).

Caution should be used when handling recoil spring since it is under tension.

B. ASSEMBLY:

1. Pin the rope with roll pin (6) through the hole in the pulley. Assemble so that the rope wraps counter clockwise around pulley.
2. Slip the other end of the rope through the hole in the housing (4). Replace the pulley in the housing. Thread rope through the handle.

MAGNETO ASSEMBLY

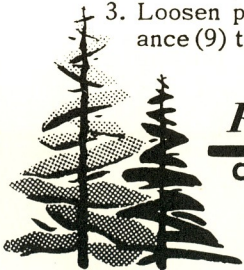


A. ACCESS TO MAGNETO

1. Take the starter housing assembly (1) off by removing three screws (2), the handle brace screw (3).
2. Remove the fan assembly (4) by loosening the fan retaining nut (5). This nut acts as a puller; unscrewing it forces the fan from the crankshaft.
3. Pull fan assembly from shaft.

B. BREAKER POINTS ADJUSTMENT:

1. Rotate breaker point cover spring (6) away from the cover (7) and remove the cover (7).
2. Rotate crankshaft (8) until cam (9) is at its highest position, giving the biggest breaker point opening (10).
3. Loosen point adjusting screw (11) and set breaker point gap clearance (9) to .020 inch. The tip of the cover (7) is a .020 inch gauge.



Remington

CHAIN SAWS

SERVICE SECTION

See your Remington Dealer for parts, accessories and service,

OR

**REMINGTON ARMS COMPANY, INC.
POWER TOOLS DEPARTMENT
25000 SOUTH WESTERN AVENUE
PARK FOREST, ILLINOIS**

TROUBLE	POSSIBLE CAUSE	REMEDY
CHAIN NOT RECEIVING OIL	<ol style="list-style-type: none"> 1. Chain oil line not filled 2. Oil Line clogged 	<ol style="list-style-type: none"> 1. Pump oiler until oil appears. 2. Clear guide bar oil holes of foreign material.

CAUTION

WHEN REPLACING ANY FASTENERS THAT HAVE BEEN REMOVED, BE SURE TO TIGHTEN SECURELY.



Remington

CHAIN SAWS

DAILY MAINTENANCE

Saw must be shut off before any of the following steps are taken.

ENGINE:

1. Keep your saw clean.
2. Remove all dirt and saw chips from cylinder.

FILTER:

To remove filter:

1. Lay the saw on its side. Push in and release hook.
2. Remove cap, spring, grommet and hook.
3. Remove and clean the air filter element inside and outside. Wash with clear gasoline – not oil mixture. If possible use compressed air to blow filter clean.
4. Reassemble, making sure that cap and spring are in the original position and the overlap on the element is not over the manifold opening. NOTE: A clogged filter will cause a rich fuel mixture.

CHAIN:

1. Keep the chain clean and well oiled by using the correct oil-kerosene mixture. Sharpen and adjust chain if necessary. (See Sharpening Instruction with chain – page 14.)
2. Keep gauges at proper depth. (See pages 22 and 23 of Chain Sharpening Instructions.)

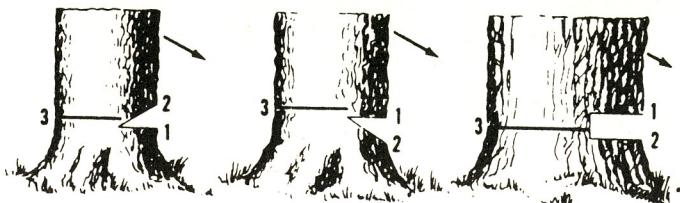
GUIDE:

Grease roller nose at least twice daily. Keep guide bar oil holes free and clear of foreign material.

TIGHTEN ALL VISIBLE SCREWS AND NUTS.

FELLING WITH THE CHAIN SAW

Before beginning operation, take a few minutes to size up the lean of the tree carefully. Decide before hand just where the tree may be felled. Take note of the larger branches as well as the wind direction. Be certain to have a clear, safe place to move to. Take into consideration that the tree may not fall as planned.



NOTCHING

Notches are made on the side on which the tree should fall. The undercut provides the hinge point on which to tip the tree in the right direction. Various notches are used in different parts of the country. Illustrated are a few types - any of which may be made with your REMINGTON Chain Saw.

The cuts are numbered in the proper order for cutting. The notch (1 and 2) is made first to a depth of approximately one third the diameter of the tree. The usual practice is to saw out the notch at a 45° angle.

THE BACK CUT OR FELLING CUT:

The back cut (3) is made about 2" higher than the bottom of the undercut. The back cut should be kept parallel with the undercut. If all cutting is done properly, the tree will begin falling when only an inch or two of holding wood is left.

WHEN THE TREE FALLS:

Move to a safe place when the tree begins to fall. Do not depend on the tree to fall the same as one felled under similar conditions.

OPERATING THE SAW

The guide must be kept in the middle of the cut so that the cutters returning in the upper groove do not cut into the side of the kerf; do not twist the saw in the cut; feed the saw into the tree - the rate of speed will depend on the type and size of timber. When making a deep cut, the saw slot should be spread with a wedge to prevent pinching the guide and chain. Wedges should be made of wood or magnesium alloy - not steel. A steel wedge will destroy the chain if it comes in contact with the chain. Wedges and a single bit ax should always be kept at hand.

FOR SAFER, EASIER, AND FASTER CUTTING, KEEP THE CHAIN SHARP.



Remington

CHAIN SAWS

WARNING

Never adjust the high speed mixture screw less than one (1) full turn open. Too lean a mixture may damage the engine due to lack of proper lubrication.

STARTING

A. IGNITION SWITCH ON

Move the ignition switch to "ON" position.

B. CLOSE CHOKE

Move choke lever to "CHOKE" position. Usually, the choke is needed only for starting a cold engine.

C. OPEN THROTTLE

Squeeze and hold the throttle trigger to open the throttle.

D. PULL STARTER

Pull the starter handle, using a short, fast pull. Repeat until engine starts.

E. RUNNING

After the engine starts, release the throttle trigger and return the choke lever to "RUN" position.

F. STOP

Stop engine by returning ignition switch to "OFF" position.

PREPARATION FOR RUNNING

A. FUEL:

Mix well together in a clean container, REMINGTON 2-cycle Engine Oil No. 48411 and REGULAR gasoline.



FUEL MIXING CHART

MIXTURE	GASOLINE	OIL
16 : 1	1 GAL.	1/2 PT.
	2 GAL.	1 PT.

B. CHAIN OILER:

Fill the oil tank with REMINGTON 2-Cycle Engine Oil No. 48411 or a good grade of oil SAE 30. Mix with $\frac{1}{4}$ kerosene in hot weather and $\frac{1}{2}$ kerosene in cold weather. Push oiler thumbpiece until oil appears.

C. ROLLER NOSE:

Grease the roller nose at least twice daily by inserting the grease gun needle nose into the hole in the roller nose side plate and push the grease gun handle until grease appears on roller nose. Use REMINGTON No. 18347 or No. 1 Lithium Lubricant.

D. CARBURETOR:

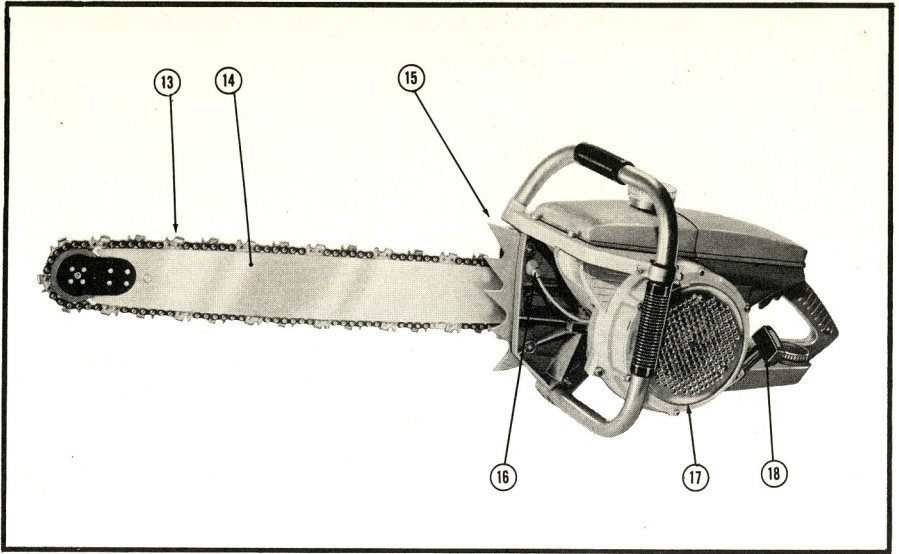
THE CARBURETOR HAS BEEN FACTORY ADJUSTED. ONLY A MINOR ADJUSTMENT MAY BE NECESSARY FOR NORMAL CUTTING OPERATION DURING THE BREAK-IN PERIOD.

When further adjustments are necessary, refer to page 14.



Remington

CHAIN SAWS



LEGEND

LEFT HAND

13. Chain

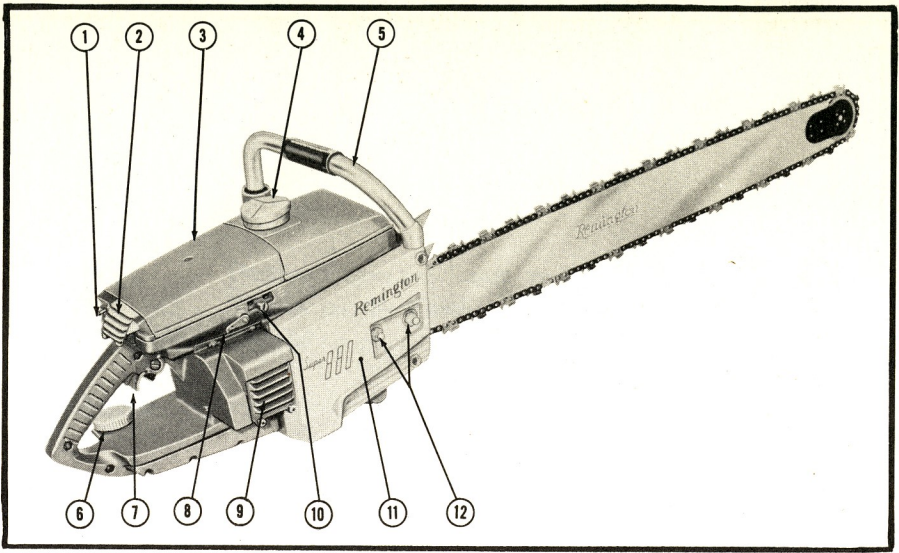
14. Guide Bar

15. Sticker

16. Oil Line

17. Starter

18. Starter Handle



LEGEND

RIGHT HAND

1. Ignition Switch
2. Chain Oiler Thumb Piece
3. Carburetor Cover
4. Fuel Cap
5. Handle
6. Oil Cap
7. Throttle Trigger
8. Choke Lever
9. Muffler
10. Throttle Adjustment Screw
11. Sprocket Cover
12. Guide Tightening Nuts



Remington

CHAIN SAWS

PUTTING GUIDE AND CHAIN ON SAW

- A. Mount guide over guide bolts.
- B. Install the chain over the sprocket and on the guide. Cutting edges of chain on top of guide must face forward toward the roller nose.
- C. Connect ends of chain together with connecting pin.
- D. Place sprocket cover or adjusting block over bolts. Adjusting block pin must be in the hole in the guide.
- E. Replace washers and nuts. **DO NOT TIGHTEN NUTS UNTIL CHAIN ADJUSTMENT IS MADE.**

TIGHTENING THE CHAIN

- A. Tighten chain with the adjusting screw until chain is snug on the guide. (See chain instructions – Chain Tension – page 8 to 11).
- B. Tighten the nuts firmly on sprocket cover or adjusting block. Lift up roller nose end of guide when tightening. **KEEP CHAIN SNUG AT ALL TIMES.**

CONTENTS

SECTION		PAGE
ASSEMBLY	Putting Guide and Chain on Saw	3
	Tightening the Chain	3
	Legend	4 & 5
OPERATION	Preparation for Running	6
	Fuel	6
	Chain Oiler	6
	Roller Nose	6
	Carburetor	6
	Starting	7
	Felling with the Chain Saw	8
	Notching	8
	The Back Cut	8
	When the Tree Falls	8
Operating the Saw	8	
MAINTENANCE	Daily	9
	Trouble Shooting Data	10
	Ignition System	10
	Fuel System	11
	Chain	11
SERVICE	Carburetor Adjustment	14
	Magneto	16
	Access to Magneto	16
	Breaker Point Adjustment	16
	Magneto Timing	17
	Starter	17
	Disassembly	17
Assembly	17	



Remington

CHAIN SAWS

Thank You

FOR YOUR PURCHASE OF A REMINGTON CHAIN SAW

Time has clearly proven that preventive maintenance, on any piece of mechanical equipment, is an important factor in the performance received. It is suggested that you read this manual carefully and keep it for ready reference. The following suggestions are made to assist you in obtaining top performance from this chain saw unit:

1. Proper lubrication is **IMPORTANT**. Always use **REMINGTON 2-Cycle Engine Oil** as well as a good grade of **REGULAR gasoline** in the fuel mixture. (See page 6 for mixture ratio.)
2. Always filter mixture when filling gas tank. Dirty fuel results in clogged carburetor jets and poor performance. Wipe saw dust from around gas cap before filling. Never mix large quantities of fuel. Condensation will form moisture and cause hard starting. Empty your container and the saw periodically to dispose of moisture which settles to the bottom. Never remix fuel in container with some of the old fuel remaining. Use fresh gas.
3. Grease guide bar roller nose at least twice daily; more often under severe operating conditions.
4. When storing chain saw during non-cutting months, drain fuel mixture from gas tank and start engine. Run until fuel in gas line and carburetor is used up.
5. Check tightness of screws, nuts and bolts before and during operation. Loose fasteners can cause damage to the chain saw and make operation unsafe.
6. Do not operate chain saw with dull chain. The chain is a cutting device and must be kept sharp. (Read and follow directions in Chain Sharpening Instruction Booklet.)
7. Do not operate chain saw with loose chain when using a roller nose guide bar. A loose chain results in excessive wear on chain, guide bar, and sprocket. (See pages 8 to 11 of Chain Instruction Booklet.)
8. Keep your chain saw clean. A dirty saw does not "breathe" and creates excessive heat. (See page 9 for instructions.)
9. Reverse guide bar, top for bottom every week. You will receive longer guide bar life, just as you received longer tire life on your car by rotating the tires.
10. When your **REMINGTON** chain saw is in need of maintenance, see your nearest Remington Dealer.

REMINGTON ARMS COMPANY, INC.

ms
S

Remington

