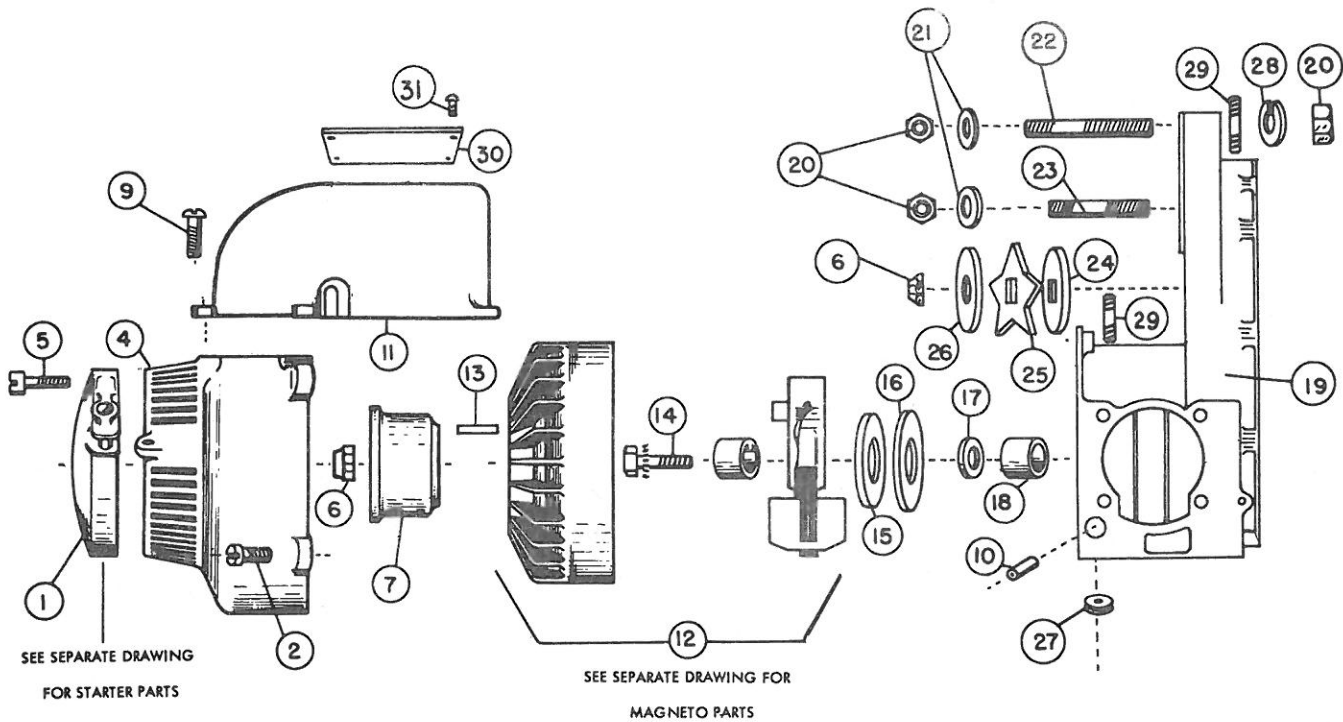


Ref. No.	Part No.	No. Req'd	DESCRIPTION	Ref. No.	Part No.	No. Req'd	DESCRIPTION
1	1909	1	Gasket, reed valve to crankcase.	29	3214	1	Bushing.
2	1511	2	Stud, carburetor mounting.	30	2249	1	Throttle Shaft.
3	2308	1	Reed Valve.	31	2411	1	Gas Pick-up Weight, complete with:
4	1964	1	Gasket Reed Valve to Carb		2412	1	Felt.
5	3701	1	Carburetor (see carb. page for parts).		2413	2	Rings.
6	1513	2	Nut—Carb. Mounting.		1532	1	Pin
7	1974	1	Gasket, tank to crankcase.	32	1645	1	Washer, brass.
8	1512	4	Nut, tank mounting.	33	2502	2	Washer, plastic.
9	1564	4	Stud, tank mounting.	34	1580	1	Throttle Return Spring.
10	1401	1	Fuel Tank, complete with:	35	2451	1	Stop Switch, complete with
	1507	1	Drive Screw.		2495	1	Button.
11	1545	10	Screw, carb. cover plate-airfilter		2452	1	Insulator Tube.
			cover screw w/washer.	36	2507	1	Throttle Wire.
12	1502	2	Washer, #10 lock.	37	1273	1	Throttle Trigger Assembly.
13	2437	2	Grommet, carb. adjusting screw.	38	3229	1	Bushing, throttle shaft
14	1630	1	Spring, idle adjusting.	39	2111	1	Gas Pick-up Line (7" long cut from
15	1639	1	Screw, idle adjusting.				2701 tubing).
16	2454	1	Choke Rod, complete with:	40	2476	1	Fitting (Elbow).
	2494	1	Button.	41	2143	1	Gas Line (2 3/4" long cut from 2711
	1953	1	O-Ring.				tubing).
	2509	1	Rubber Washer.*	42	1942	1	Gasket, carb. cover.
19	2432	2	Gas cap.	43	1215	1	Carb. Cover, magneto side.
20	2463	1	Straight Fitting.	44	1973	1	Gasket.
21	2160	1	Oil Discharger Line Assembly	45	2396	1	Cover Plate.
			(Models 47-48) (1/8 x 4 1/2" long	46	1577	2	Screw.
			cut from 2773 tubing.)	47	2558	1	Air Filter.
	2145	1	Oil Discharger Line Assembly (Model	48	1948	1	Gasket, air filter cover.
			65) (1/8 x 7" long cut from 2773	49	1220	1	Air Filter Cover.
			tubing).	50	1629	2	Tubing Nuts.
* 22	2656	1	Oil Pump Assembly	51	1551	1	Set Screw, throttle shaft.
			Complete, Includes:	52	1941	1	Gasket.
	2550	1	Spring.	53	1214	1	Carb. Cover, clutch side.
	1952	1	O-Ring.	54	1530	1	Accdg. to handle bar mounting.
	2661	1	Mounting Nut.				(Bottom.)
	2662	1	Lock Washer.	55	1512	1	Nut.
	2484	1	Oil Button.	56	1648	1	Screw, handle bar mounting. (Top.)
23	2127	1	Line, oil tank to pump 6" long cut	57	1578	1	Rubber Washer.
			from 2701 tubing.	58	1915	2	O-Ring.
24	2505	1	Fitting, oil pick-up to pump.	60	2464	2	Ferrules.
25	2132	1	Oil Pick-up Line (3 3/4" long cut from				
			2701 tubing).				
26	2517	1	Dust Clip.				
27	2461	1	Oil Pick-up Weight.				
28	1581	1	Roll Pin.				

\* Oil Pump Repair Kit Available—Order Part No. 2685.

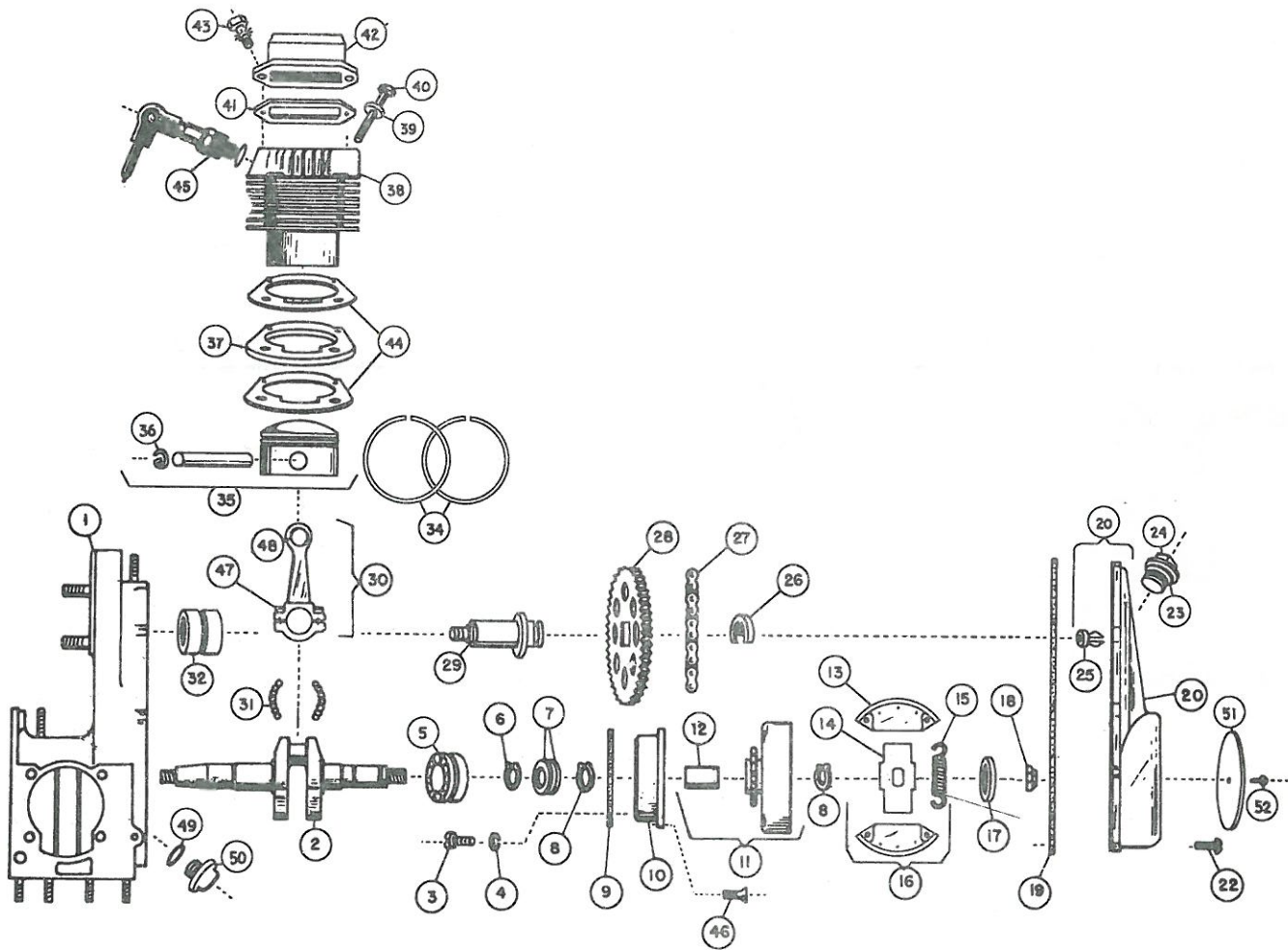




REFERENCE NO.	PART NO.	NO. REQUIRED	DESCRIPTION
1	4205	1	Starter Assembly (See starter page for parts).
2	1505	4	Screw, w/Lockwasher.
4	1296	1	Fan Housing.
5	1661	4	Screw, Starter Mounting.
6	1538	2	Nut.
7	2501	1	Starter Cup.
9	1514	4	Screw, w/Lockwasher.
10	2138	2	Insulator tube $\frac{3}{4}$ " long cut from 2747 tubing.
11	1355	1	Cylinder Shield.
12	3905	1	Magneto, Assembly.
13	2243	1	Key.
14	1675	2	Sem-Screw with lockwasher.
15	1680	2	Locating Ring.
16	1681	1	Oil Slinger (Plastic).
17	1936	1	Seal.
18	3227	1	Bearing.
19	1348	1	Crankcase Assembly (Includes studs).
20	1633	3	Nut.
21	1626	2	Washer, $\frac{3}{8}$ " flat.
22	1605	1	Stud.
23	1604	1	Stud.
24	4820	1	Sprocket Shroud, inside standard.
	4830	1	Sprocket Shroud Optional for $\frac{1}{2}$ " Pitch.
25	4822	1	Sprocket, 7 Tooth $\frac{7}{16}$ " Pitch, standard.
	4828	1	Sprocket Optional, 7 Tooth $\frac{1}{2}$ " Pitch.
	4834	1	Sprocket, Optional, 8 Tooth, .404" Pitch.
26	4821	1	Sprocket Shroud, outside standard.
	4829	1	Sprocket Shroud Optional for $\frac{1}{2}$ " Pitch.
27	2437	1	Grommet.
28	1613	1	Washer, $\frac{3}{8}$ " lock.
29	1539	2	Stud, handlebar mounting.
30	2538	1	Instruction Plate.
31	1507	4	Drive Screw.

# POULAN CHAIN SAW—MODEL 48

10/67



Ref. No.	Part No.	No. Req'd	DESCRIPTION
1	1348	1	Crankcase, includes:
	1507	1	#4 Drive Screw, oil vent.
	1539	2	Handle Bar Studs.
	1511	2	Studs, carb. mounting.
	1604	1	Stud, attachment mounting.
	1605	1	Stud, attachment mounting.
	1633	1	Nut, guide mounting.
	1613	1	Washer, spur mounting.
	1564	4	Studs, tank mounting.
2	2366	1	Crankshaft.
3	1563	2	Screw, bearing mounting.
4	1642	2	Washer.
5	3208	1	Bearing—main.
6	1562	1	Retainer Ring.
7	1913	2	Seal.
8	1609	2	Retainer Ring.
9	1939	1	Gasket—bearing carrier.
10	1354	1	Bearing Carrier.
11	2271	1	Clutch Drum Assembly.
12	3240	1	Bushing.
13	2518	2	Clutch Shoe.
14	2281	1	Clutch Hub.
15	1676	2	Spring—clutch.
16	1025	1	Clutch Assembly.
17	1576	1	Washer—flat.
18	1538	1	Nut.
19	1945	1	Gasket—gear case cover.
20	1344	1	Gearcase Cover Assembly.
22	1514	9	Screw, w/lockwasher.
23	1928	1	Gasket.

Ref. No.	Part No.	No. Req'd	DESCRIPTION
24	2511	1	Oil Plug.
25	2570	1	Spacer Plug.
26	1607	1	Retainer Ring.
27	2442	1	Transmission Chain.
28	2443	1	Transmission Sprocket.
29	2283	1	Sprocket Shaft.
30	2381	1	Connecting Rod Assembly.
31	3232	24	Bearing—needle
32	3233	1	Bushing—sprocket shaft.
34	2447	2	Piston Ring.
35	2313	1	Piston Assembly.
36	1509	2	Retainer Ring.
37	2368	1	Spacer—cylinder.
38	1352	1	Cylinder.
39	1503	4	Washer.
40	1610	4	Screw.
41	1955	1	Gasket.
42	1349	1	Muffler.
43	1682	2	Sem Screw.
44	1975	2	Gasket—cylinder.
45	3012	1	Spark Plug.
46	1534	4	Screw—flat socket head.
47	1647	2	Screw.
48	3231	1	Bearing—wrist pin.
49	1969	1	O-Ring.
50	2521	1	Plug—Oil.
51	2573	1	Plate—mode.
52	1507	1	Drive Screw.