

25 CENTS



PIONEER

CHAIN SAWS

**ILLUSTRATED
PARTS
CATALOGUE**

PIONEER SAWS, PETERBOROUGH, ONTARIO, CANADA;
LINCOLN, NEBRASKA, U.S.A.

LITHO U.S.A.

**MODEL
NU-17**

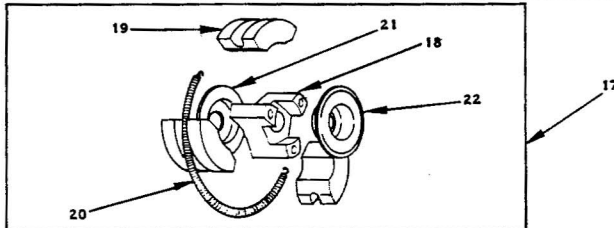
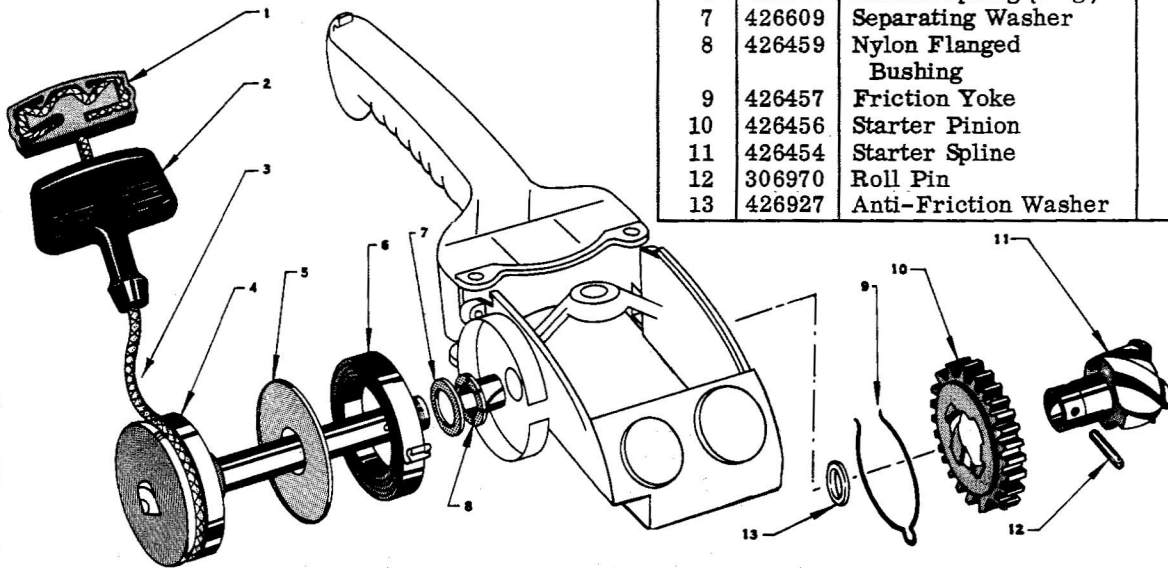
PART NO. 430303 11-72

MODEL NU-17

STARTER PARTS LIST

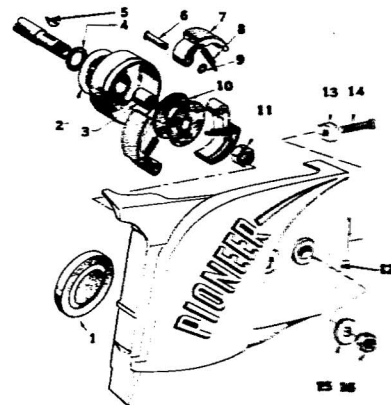
Ref. No.	Part No.	Description	Qty. Req'd.
1	304323	Cord Anchor	1
2	602773	Starter Handle	1
3	426752	Starter Cord	1
4	470588	Starter Pulley	1
5	426524	Rewind Spring Backing Plate	1
6	471586	Rewind Spring (Pkg.)	1
7	426609	Separating Washer	1
8	426459	Nylon Flanged Bushing	1
9	426457	Friction Yoke	1
10	426456	Starter Pinion	1
11	426454	Starter Spline	1
12	306970	Roll Pin	1
13	426927	Anti-Friction Washer	1

STARTER



CLUTCH PARTS LIST

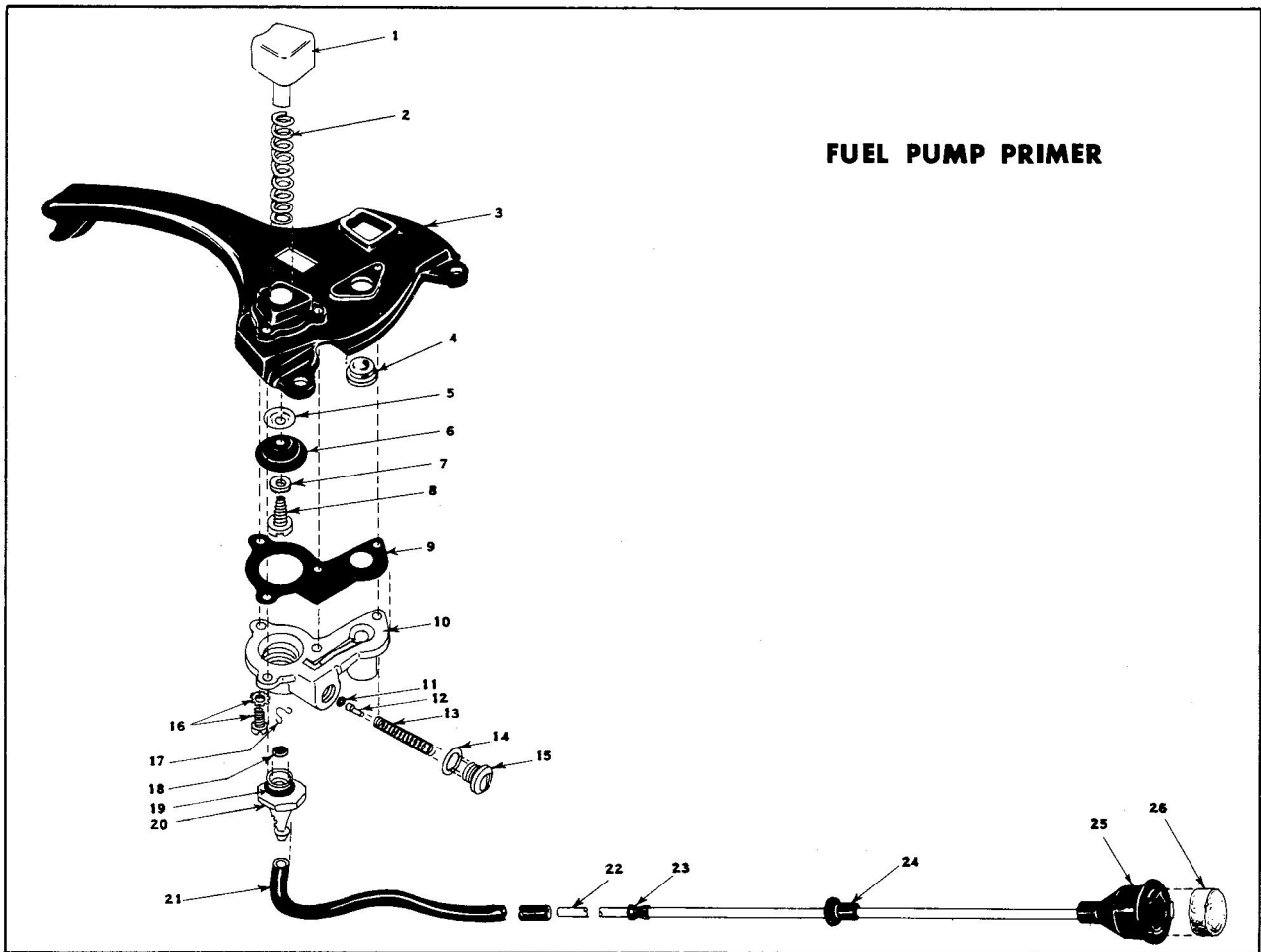
Ref. No.	Part No.	Description	Qty. Req'd.
1	425020	Clutch Cover	1
2	470340	Sprocket Assembly	1
3	425091	Sprocket Bearing	1
4	425015	Inside Sprocket Washer	1
5	425061	Clutch Driver Key	1
6*		Clutch Driver Pin	3
7*		Clutch Shoe Assembly	3
8*		Clutch Driver Spring	3
9*		Clutch Driver Clip	3
10*		Clutch Driver	1
11	425092	Clutch Driver Nut, Flexloc	1
12	470573	Strut Assembly	1
13	425672	Chain Adjusting Pin	1
14	202190	Chain Adjusting Screw	1



Ref. No.	Part No.	Description	Qty. Req'd.
15	425116	Strut Washer	2
16	425031	Strut Nut	2
17	470789	Clutch Assembly	1
18	426962	Driver	1
19	426963	Clutch Shoe	3
20	426964	Garter Spring	1
21	426965	Inner Plate	1
22	426966	Outer Plate	1

*Original equipment superseded for service by clutch assembly No. 470789

MODEL NU-17



FUEL PUMP PRIMER

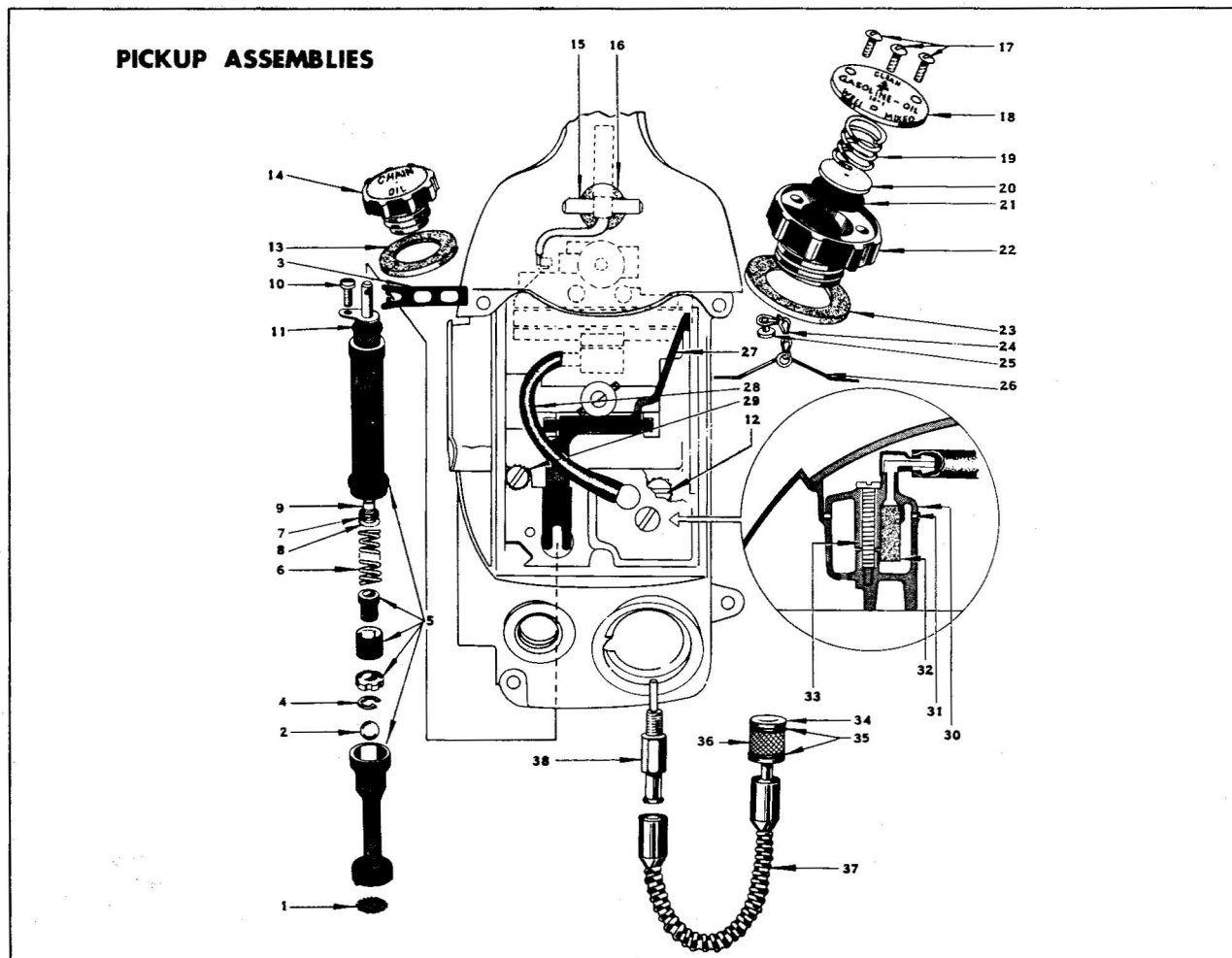
FUEL PUMP PRIMER PARTS LIST

Ref. No.	Part No.	Description	Qty. Req'd.	Ref. No.	Part No.	Description	Qty. Req'd.
*	470759	Fuel Pump Primer Assembly	1	16	307192	Screw and Lockwasher	4
1	426830	Primer Pump Button	1	*	470728	Inlet Valve Housing Assembly	1
2	426822	Primer Button Spring	1	17	426824	Retaining Clip	1
3	426890	Control Panel	1	18	426825	Disc Valve - Inlet	1
4	426831	Sight Glass 1/2"	1	19	202893	"O" Ring Valve Housing	1
5	426818	Cup-Primer Pump Diaphragm	1	20	†	Inlet Valve Housing	1
6	426815	Diaphragm	1	21	426828	Air Box to Primer Fuel Line	1
7	426926	Washer	1	*	470727	Pick-up Line Assy.	1
8	426821	Screw	1	22	†	Fuel Pick-up Line	1
9	426820	Gasket	1	23	†	Stop-Primer Pick-up Line	1
10	426832	Body-Primer Pump	1	24	426819	Seal-Primer Pick-up Line	1
*	470729	Exit Valve Assembly	1	25	426823	Primer Filter Body	1
11	308528	"O" Ring	1	26	426826	Primer Fuel Filter	1
12	†	Stem Exit Valve	1				
13	†	Exit Valve Spring	1				
14	426843	End Cap Washer	1				
15	†	End Cap - Exit Valve	1				

† Available in Assembly Only

*Not Shown

MODEL NU-17



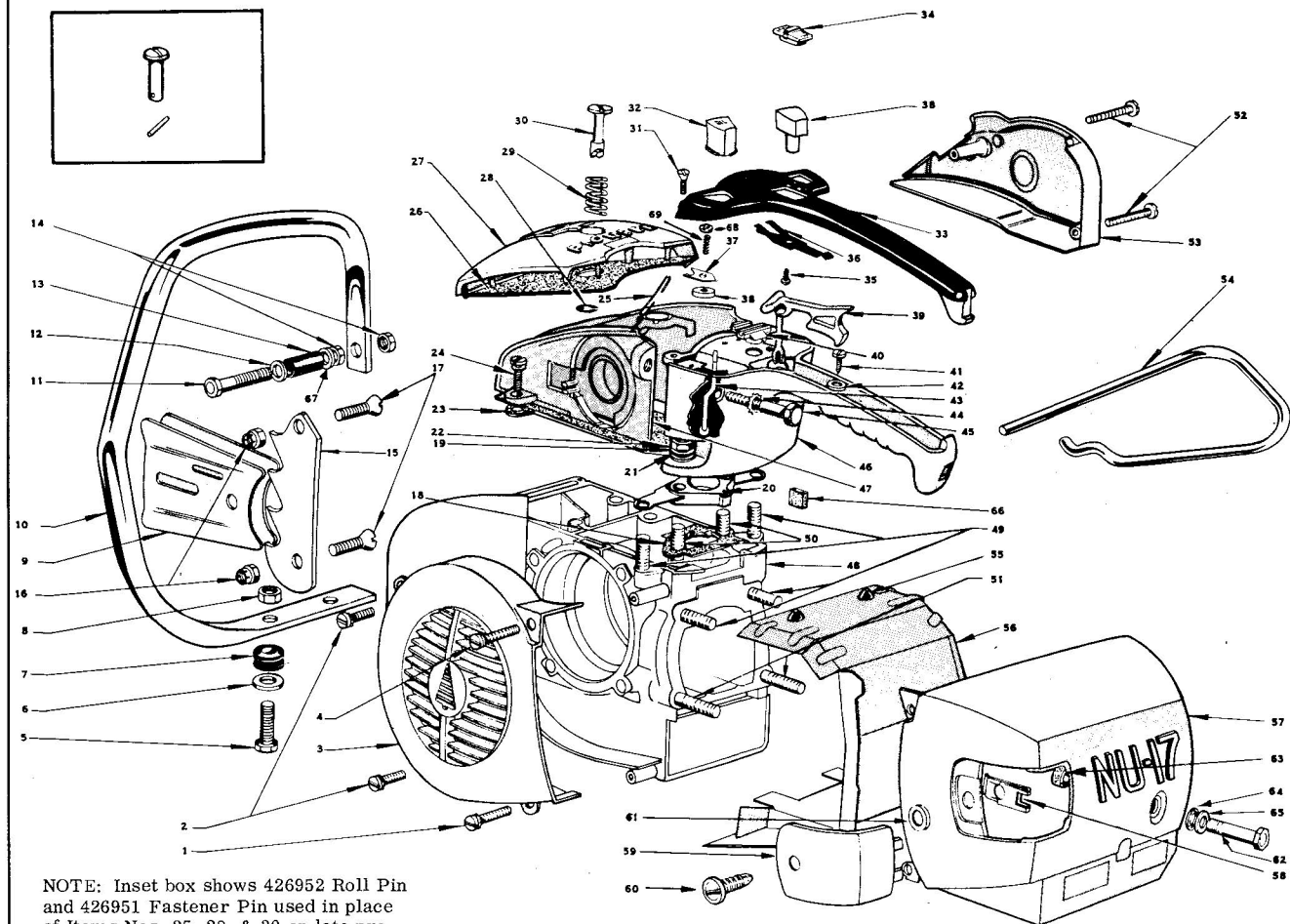
PICKUP ASSEMBLIES PARTS LIST

Ref. No.	Part No.	Description	Qty. Req'd.	Ref. No.	Part No.	Description	Qty. Req'd.
*	470596	Oil Pump Assembly	1	18	426845	. Gas Cap Cover Plate	1
1	426474	. Filter Gauze	1	19	426844	. Gas Cap Spring	1
2	426227	. Ball, 9/32 Dia.	1	20	425994	. Valve Plate	1
3	426476	. Oil Pump Clip	1	21	426013	. Gas Cap Valve	1
4	202755	. Retaining Ring	1	22	425716	. Gas Cap	1
5	470638	. Oil Pump Body Assembly	1	23	425087	. Gas Cap Gasket	1
6	426471	. Rod to Oil Pump Spring	1	24	425719	. Gas Cap Chain	1
7	425028	. "O" Ring	1	25	425029	. Lock Spring Rivet	1
8	300154	. Washer	1	26	425718	. Gas Cap Lock Spring	1
9	426470	. Oil Pump Rod	1	27	470589	Oil Pump Lever Assembly	1
10	305230	Pump to Airbox Screw	1	28	426465	Carburetor Fuel Line	1
11	303059	. "O" Ring	1	29	551705	Screw	1
12	426751	Screw	1	30	470672	Filter Cap Assembly, Cap and Elbow	1
13	425074	Oiler Filler Cap Gasket	1	31	426464	Gasket	1
14	470360	Oiler Filler Cap Assembly	1	32	426563	Felt	1
15	426542	Throttle Lever Pivot Pin	1	33	307190	Screw	1
16	426535	Throttle Trigger Seal	1	34	470090	Pickup Head Assembly	1
*	470726	Gas Cap Assembly	1	35	304614	. Retaining Ring	2
17	425633	. Screw	3	36	425317	. Pickup Screen	1
				37	425343	Flex Fuel Pickup Line	1
				38	426466	Fuel Line Adapter	1

*Not Shown

MODEL NU-17

OUTER ASSEMBLIES



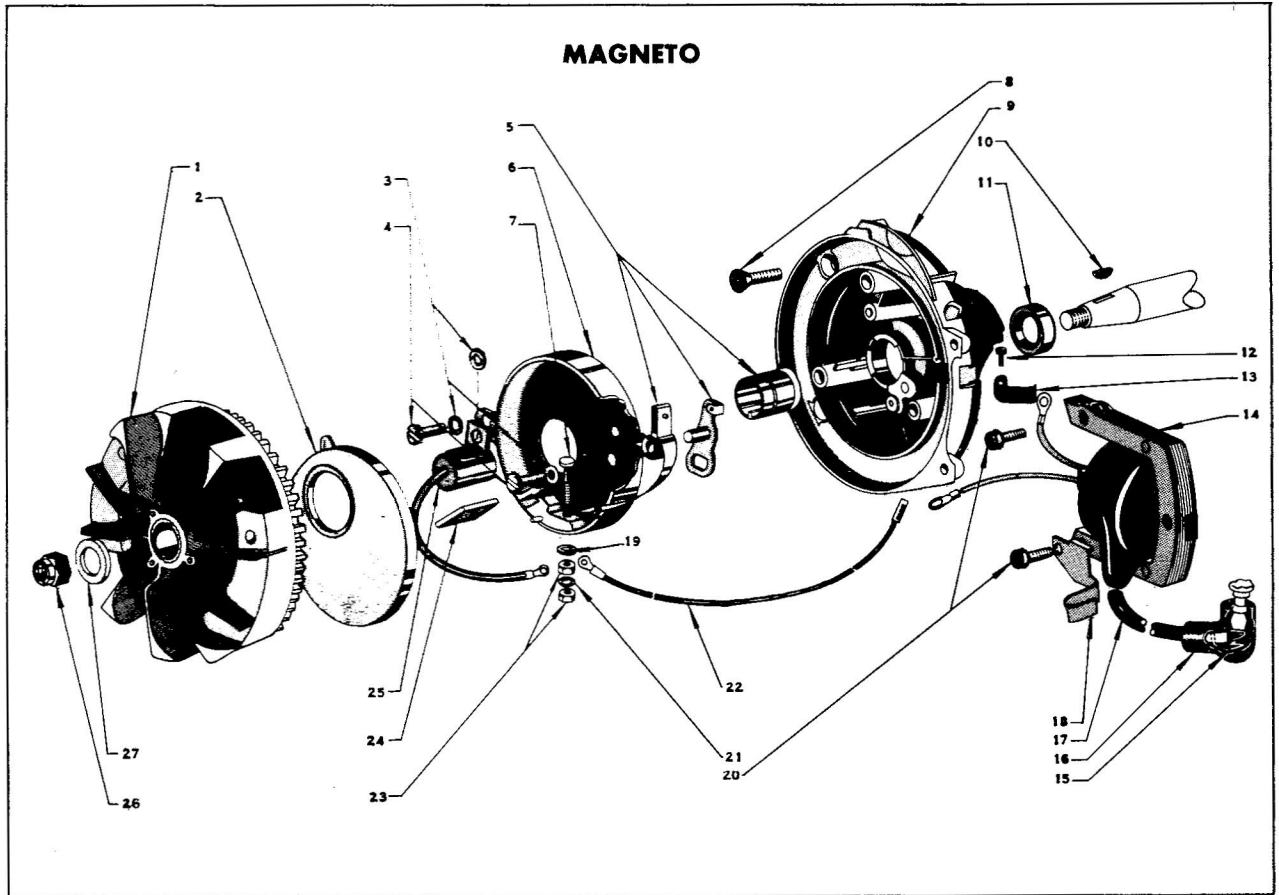
NOTE: Inset box shows 426952 Roll Pin and 426951 Fastener Pin used in place of Items Nos. 25, 28, & 30 on late production NU-17.

OUTER ASSEMBLIES PARTS LIST

Ref. No.	Part No.	Description	Qty. Req'd.	Ref. No.	Part No.	Description	Qty. Req'd.	Ref. No.	Part No.	Description	Qty. Req'd.
1	304606	Screw	1	26	426491	Air Filter Element	1	49	426642	. Stud, Two Cylinders and Two and Two Rear Handles	4
2	302948	Screw	2	27	470586	Top Cover Assembly	1	50	426702	. Carburetor Mounting Stud	2
3	426425	Blower Cover	1	28	426572	. "E" Retaining Ring	1	51	426635	. Stud, Cylinder Bottom	2
4	305725	Screw	1	29	426540	. Top Cover Spring	1	52	305725	Screw	2
5	304625	Screw	2	30	426541	. Dzus Fastener Head	1	53	426445	Pulley Cover	1
6	426549	Shock Absorber Washer	2	31	200608	Screw	2	54	426661	Foothold Loop	1
7	307417	Shock Absorber, Lower	2	32	426487	Oiler Button	1	*	470691	Inner Shroud Assembly	1
8	426942	Stake Nut	2	33	426890	Control Panel	1	55	426746	. Bumper	2
9	425674	Guide Plate	2	34	426488	Ignition Switch Button	1	56	426745	. Inner Shroud	2
10	426496	Front Handle	1	35	426662	Screw	1	57	470611	Cylinder Shroud Assembly	1
11	131054	Screw	1	36	426489	Contact Switch Spring	1	58	426547	. Speed Nut Fastener	1
12	302471	Washer	1	37	426485	Oil Push Rod Seal Retainer	1	59	470616	. Inspection Cover Assembly	1
13	426492	Shock Absorber	1	38	426486	Push Rod Felt Seal	1	60	426545	. . Fastener Screw	1
14	426576	Stake Nut	2	39	426534	Throttle Trigger	1	61	426546	. . Retainer Washer	1
*	470670	Pivot Grip Assembly	1	40	426490	Switch Lead Terminal Block	1	62	302030	Screw	1
15	426498	. Pivot Grip	1	41	426664	Throttle Trigger Stop	1	63	426749	Spacer	1
16	425713	. Pivot Grip Nut	2	42	426706	Throttle Trigger Stop Washer	1	64	426703	Insulating Washer	1
17	130491	. Pivot Grip Screw	2	43	426484	Oil Pump Push Rod	1	65	302474	Washer	1
18	426705	Gasket	1	44	306488	Washer	2	66	426708	Crankcase Diaphragm Felt	1
19	303887	Washer	2	45	304913	Bolt	2	67	306407	Washer	1
20	426780	Insulating Block	1	46	426889	Rear Handle	1	68	300154	Washer	1
21	426703	Insulating Washer	2	47	426888	Air Box Front Section	1	69	426307	Spring	1
22	306397	Nut	2	48	470564	Crankcase Assembly	1				
23	426651	Air Box Front Section Gasket	1								
24	302948	Screw	2								
25	426548	Dzus Fastener Clip	1								

*Not shown

MODEL NU-17

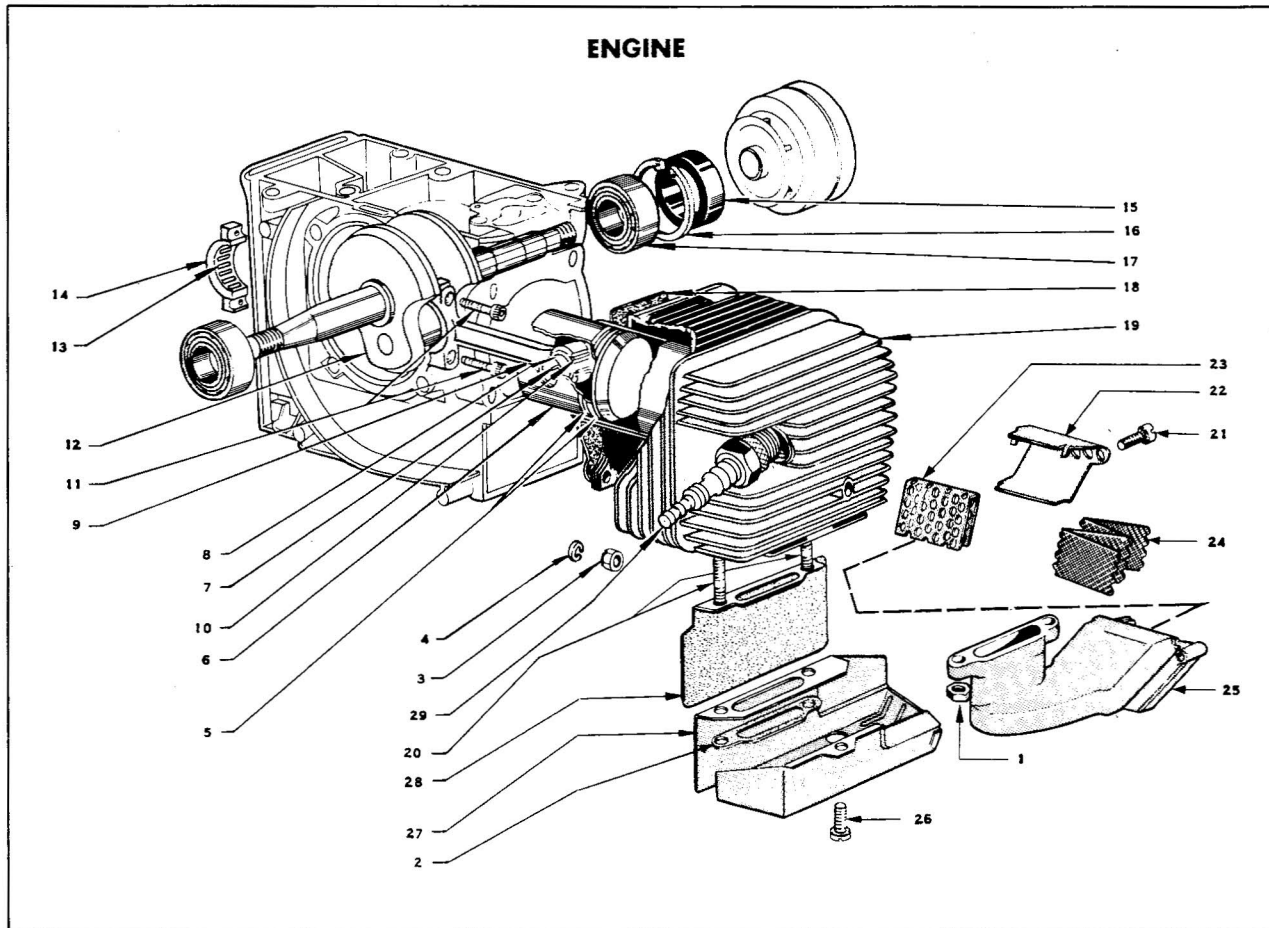


MAGNETO PARTS LIST

Ref. No.	Part No.	Description	Qty. Req'd.	Ref. No.	Part No.	Description	Qty. Req'd.
1	470604	Flywheel Assembly	1	15	580339	. Rubber Sparky Assy.	1
2	426516	Breaker Housing Cover	1	16	†	. . Sparky Spring	
3	303497	Washer	3	17	426527	. High Tension Lead	1
4	307193	Screw	2	18	426669	High Tension Wire	
5	470788	Breaker Point Set	1			Clip	1
6	426515	Breaker Housing	1	19	307189	Washer	1
7	426522	Terminal Screw	1	20	510397	Screw	2
8	426567	Screw	4	21	307247	Washer, Shakeproof	1
9	426440	Bearing Housing	1	22	470784	Switch Wire Assembly, Magneto End	1
10	425061	Flywheel Woodruff Key	1	23	302437	Hex Nut	2
11	425076	Magneto End Seal	1	24	510189	Oil Wick	1
12	307192	Screw	1	25	426528	Condenser	1
13	426508	Lead Clamp	1	26	425916	Flexloc Nut, Left Hand	1
14	470685	Coil and Lamination Assembly	1	27	304671	Washer	1

† Serviced in assembly only

MODEL NU-17



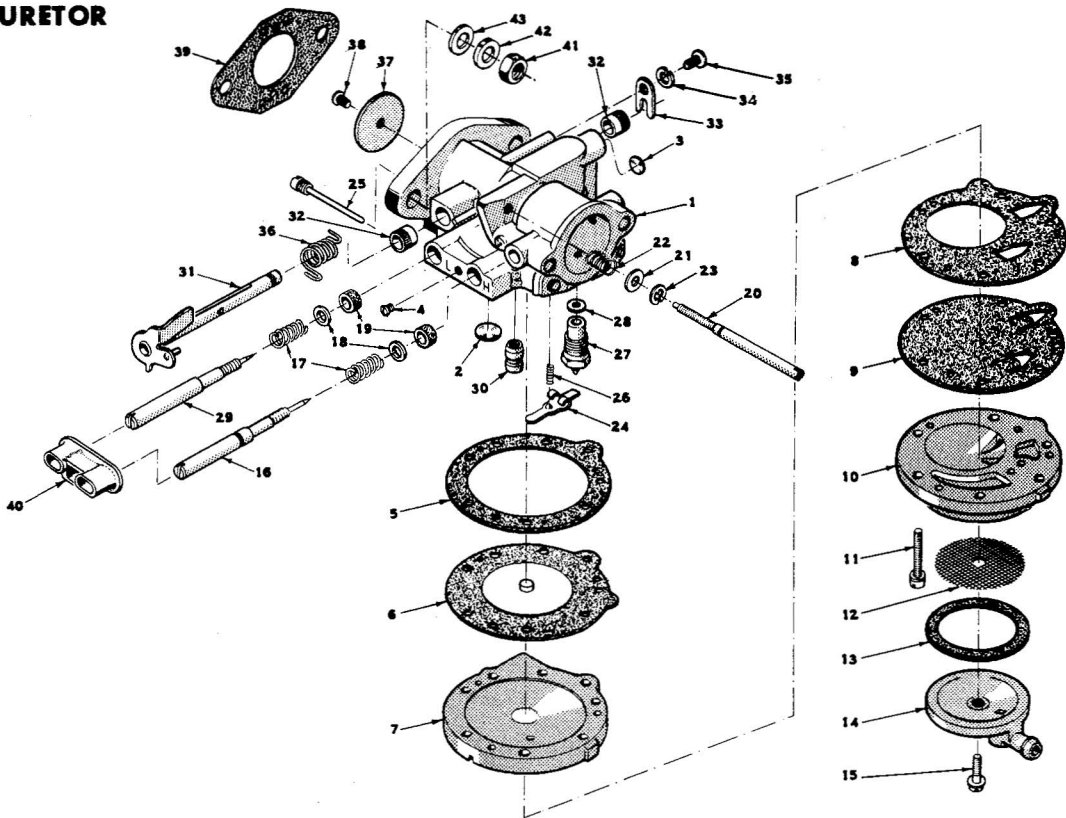
ENGINE PARTS LIST

Ref. No.	Part No.	Description	Qty. Req'd.	Ref. No.	Part No.	Description	Qty. Req'd.
1	304609	Muffler Nut	2	15	425077	Drive End Seal	1
2	426444	Muffler Gasket	1	16	425067	Retaining Ring	1
3	306397	Cylinder Base Nut	4	17	425066	Main Bearing	2
4	306396	Lockwasher	4	18	426453	Cylinder Base Gasket	1
5	470777	Piston Ring Set	1	19	470592	Cylinder Block	1
6	425640	Piston	1	20	425334	. Exhaust Stud	2
7	425062	Wrist Pin Clip	2	*	470688	Muffler Assembly	1
8	425641	Wrist Pin	1	21	307613	. Screw	2
9	470168	Connecting Rod Assembly, Complete	1	22	426748	. Exhaust Deflector	1
10	425060	. Wrist Pin Bearing	1	23	426741	. Screen Plate	1
11	304610	. Socket Head Screw	2	24	426742	. Screen	1
12	426402	Crankshaft	1	25	426744	. Muffler Body	1
13	470926	Needles - Pkg of 12	1	26	303311	Screw	1
14	470927	Bearing Cage, Two Halves	1	27	426743	Muffler Shroud	1
				28	426740	Gasket Shield	1
				29	076152	Spark Plug	1

*Not Shown

MODEL NU-17

CARBURETOR



CARBURETOR PARTS LIST

Ref. No.	Part No.	Description	Qty. Req'd.	Ref. No.	Part No.	Description	Qty. Req'd.
*	470756	Carburetor Assembly	1	22	425386	. Spring	1
1	470780	. Carburetor Body, Complete With Parts Pressed In	1	23	426917	. "E" Ring	1
†2	551595	. Welch Plug	1	†24	425489	. Inlet Control Lever	1
3	426910	. Welch Plug	1	†25	470395	. Screw	1
4	425391	. Drain Screw	1	†26	426922	. Inlet Tension Spring	1
x5	425496	. Diaphragm Gasket	1	†27	470734	. Inlet Needle Seat and Gasket	1
†6	470361	. Diaphragm	1	x28	425486	. Gasket	1
7	425491	. Cover	1	†29	426923	. Main Adjustment Screw	1
x8	425506	. Gasket	1	30	470772	. Nozzle Check Valve	1
†9	426909	. Diaphragm	1	31	470773	. Throttle Shaft and Lever	1
10	425490	. Fuel Pump Body	1	32	425469	. Bushing	2
11	426146	. Screw and Lockwasher	1	33	425459	. Clip	1
†12	425494	. Screen	1	34	425387	. Lockwasher	1
x13	425493	. Gasket	1	35	425390	. Screw	1
14	425492	. Cover	1	†36	426924	. Return Spring	1
†15	425741	. Retaining Screw	1	37	425446	. Throttle Shutter	1
†16	426921	. Idle Adjustment Screw	1	†38	426145	. Screw and Lockwasher	1
†17	425449	. Spring	2	x39	425046	Flange Gasket	1
x18	426919	. Washer	2	40	426878	Grommet	1
x19	426920	. Packing	2	41	306397	Nut	2
†20	470781	. Idle Speed Regulating Screw	1	42	303887	Washer, Plain	2
†21	426916	. Washer	1	43	426703	Washer, Insulating	2

*Not Shown

†Part No. 470783 Repair Parts Kit, Also includes Carburetor Gasket and Packing

xKit Part No. 470782.