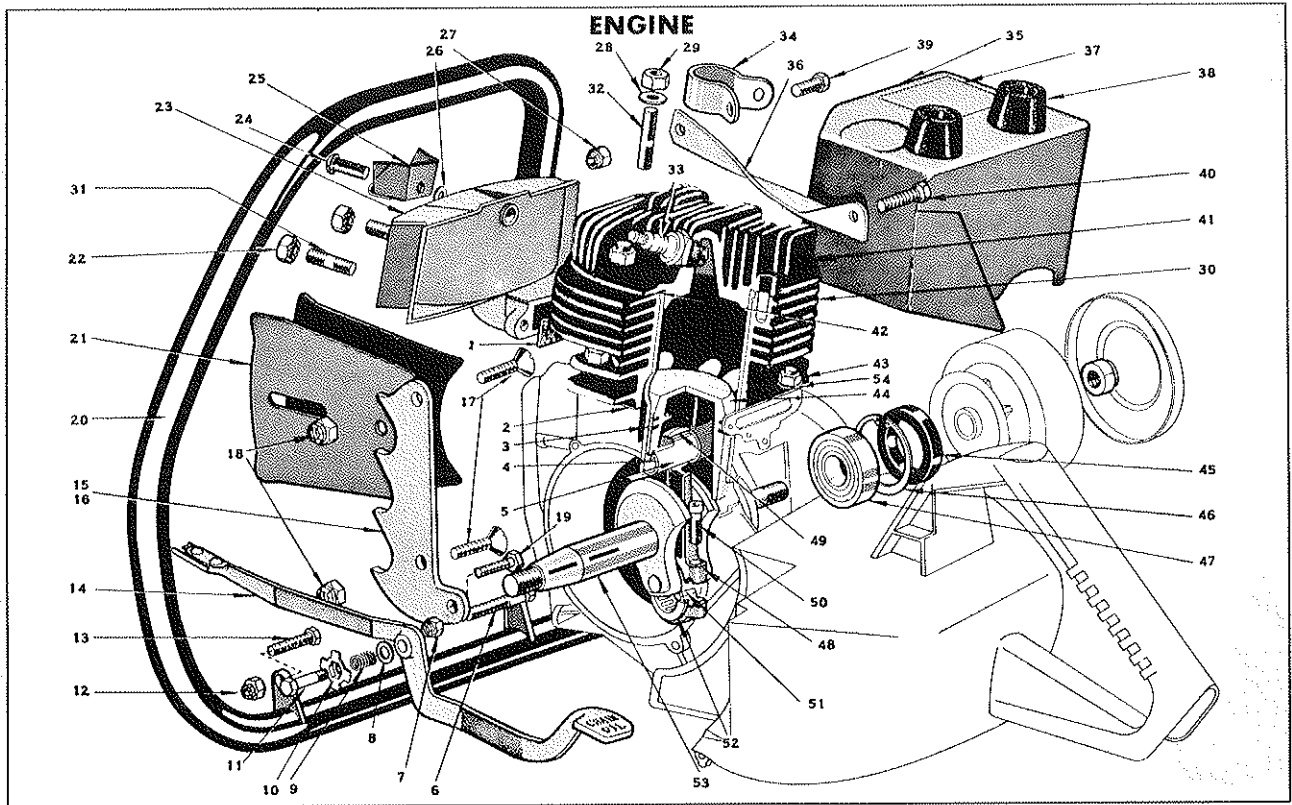


600 SERIES MODELS 600, 600A AND 610



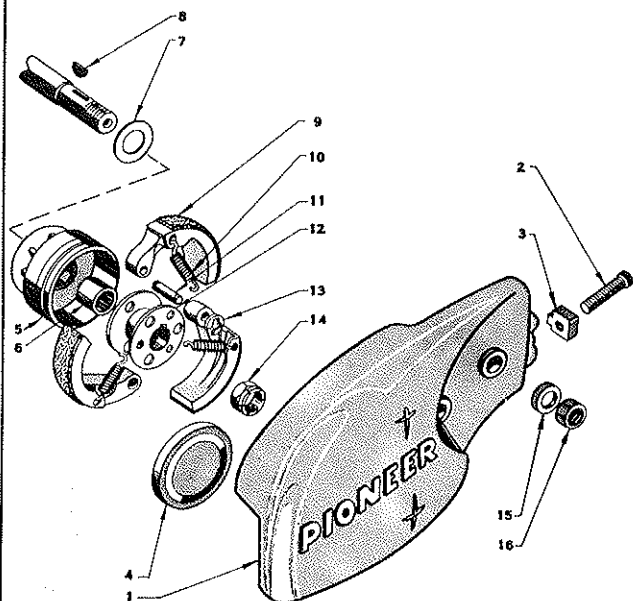
ENGINE PARTS LIST

Ref. No.	Part No.	Description	Qty. Req'd.	Ref. No.	Part No.	Description	Qty. Req'd.
1	426205	Exhaust Gasket	1	28	552743	Cylinder Head Washer	6
2	426204	Cylinder Base Gasket	1	29	306397	Cylinder Head Nut	6
3	425642	Piston Ring	2	30	470468	Cylinder Block Assy.	1
4	425062	Wrist Pin Retainer	2	31	425334	. Exhaust Stud	2
5	425641	Wrist Pin	1	32	425334	. Cylinder Head Stud	6
6	131054	Front Handle Bolt, Lg.	1	33	076152	Spark Plug	1
7	425108	Front Handle Nut	1	34	425661	Brace Clamp	1
8	425021	Oiler Lever Washer	1	35	470558	Inner Shroud Assy.	1
9	425319	Oiler Lever Spring	1	36	425660	. Forward Brace	1
10	425680	Oiler Lever Pin Lock	1	37	426408	. Warning Decal, Shroud	1
11	425705	Oiler Lever Pin	1	38	425662	. Bumpers	2
12	425108	Front Handle Nut	1	39	300977	Brace Clamp Bolt	1
13	300635	Front Handle Bolt, Short	1	40	552421	Forward Brace Bolt	1
14	470428	Oiler Lever Assembly	1	41	425648	Cylinder Head	1
15	426203	Pivot Grip, Eastern	1	42	425643	Cylinder Head Gasket	1
16	426202	Pivot Grip, Western	1	43	306397	Cylinder Base Nut	4
17	130491	Screw	2	44	425640	Piston	1
18	425713	Nut	2	45	425077	Drive End Seal	1
19	303248	Bolt	1	46	425067	Clip Ring	1
20	470435	Front Handle Assy.	1	47	425066	Main Bearing	2
21	425674	Guide Plate	2	48	470168	Connecting Rod	1
22	304609	Exhaust Nut	2	49	425060	Needle Bearing	1
23	470429	Exhaust Manifold	1	50	304610	Socket Head Screw	2
24	304607	Exhaust Screw	1	51	425089	Loose Needles	12
25	425655	Latch Trunnion	1	52	470731	Bearing Cage, Two Halves	1
26	425649	Exhaust Insulating Washer	1	53	426209	Crankshaft	1
27	425108	Brace Clamp Lock Nut	1	54	306396	Lockwasher	4

*Not Shown

600 SERIES MODELS 600, 600A AND 610

CLUTCH

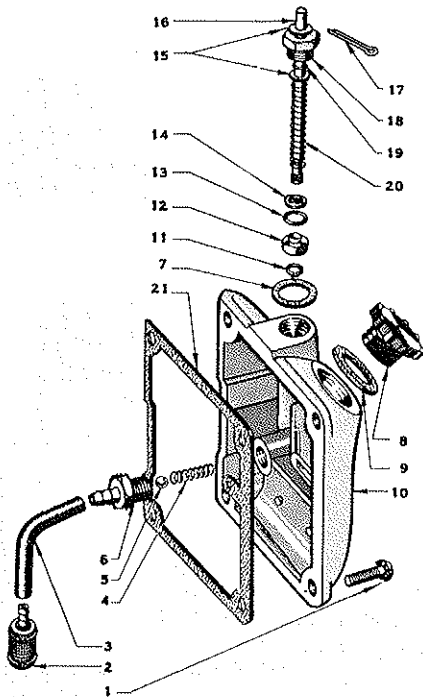


CLUTCH PARTS LIST

Ref. No.	Part No.	Description	Qty. Req'd.
*	470719	Strut Assembly (Modified for Bow Attachment)	1
1	470442	Strut Assembly	1
2	202190	. Chain Adjusting Screw	1
3	425672	. Chain Adjusting Pin	1
4	425020	Clutch Cover	1
5	470340	Sprocket Assembly	1
6	425091	. Sprocket Bearing	1
7	425015	Inside Sprocket Washer	1
8	425061	Clutch Driver Key	1
9	470667	Clutch Shoe Assembly	3
10	425012	Clutch Driver Spring	3
11	425019	Clutch Driver Pin	3
12	425018	Clutch Driver	1
13	203470	Clutch Driver Clip	3
14	425092	Clutch Driver Nut, Flexloc	1
15	425116	Strut Washer	2
16	425031	Strut Nut	2

*Not Shown

OIL PUMP

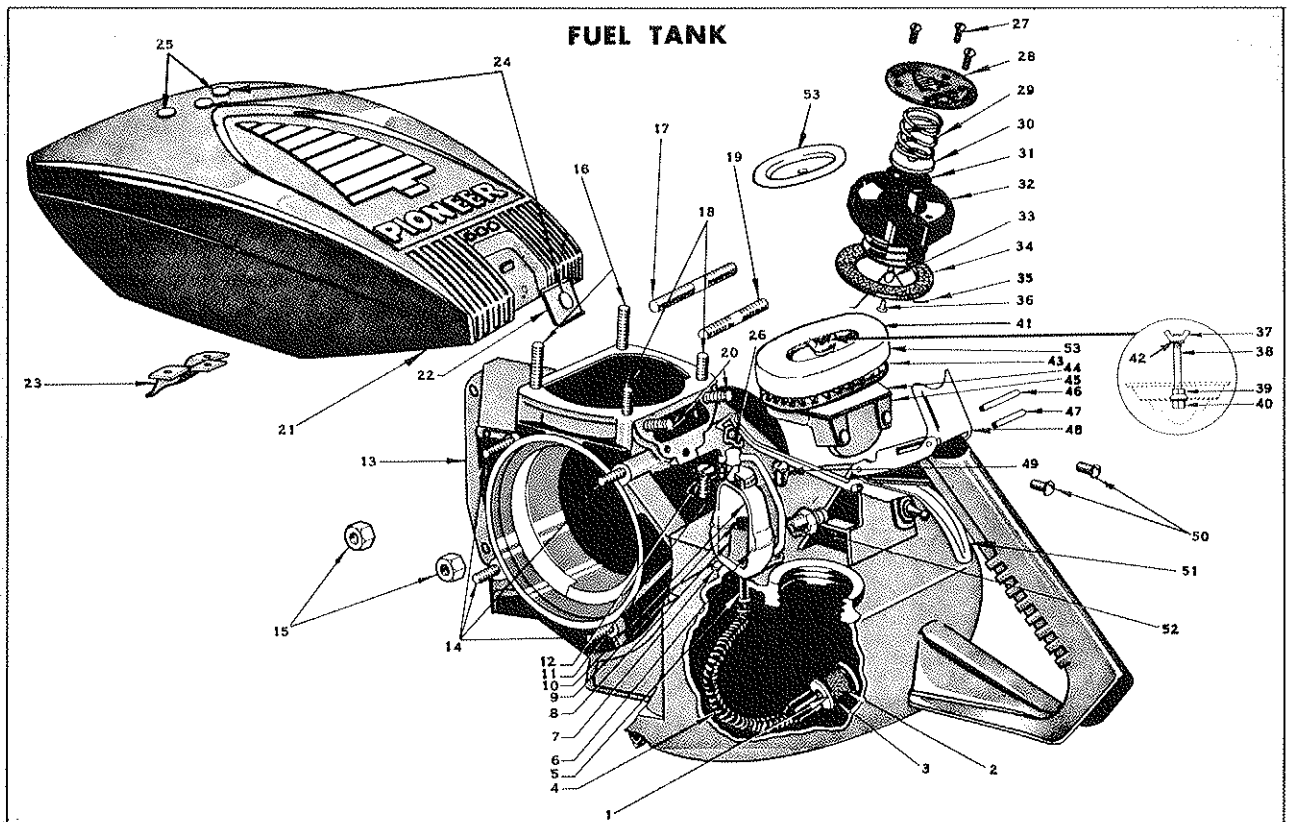


OIL PUMP PARTS LIST

Ref. No.	Part No.	Description	Qty. Req'd.
*	470430	Oiler Body Complete	1
1	302948	. Oiler Body Screw	4
2	470193	. Oiler Pick-up Assy.	1
3	426200	. Oiler Inlet Tube	1
4	426221	. Oil Ball Valve Spring	1
5	426227	. Oiler Ball	1
6	426220	. Oiler Intake Connector	1
7	425093	. Gland Nut Gasket	1
8	470360	. Oiler Filler Cap	1
9	425074	. Oiler Filler Cap Gasket	1
10	426119	. Oiler Body	1
*	470427	. Pump Plunger Assy.	1
11	425114	. . Pump Piston Clip	1
12	426197	. . Pump Piston	1
13	425095	. . Pump Piston Gland "O" Ring	1
14	306522	. . Washer	1
15	425021	. . Gland Washer	2
16	426196	. . Plunger Rod	1
17	304634	. . Cotter Pin	1
18	425085	. . Gland Nut	1
19	425028	. . "O" Ring	1
20	426198	. . Pump Spring	1
21	426199	Oiler Body Gasket	1

*Not Shown

600 SERIES MODELS 600, 600A AND 610



FUEL TANK PARTS LIST

Ref. No.	Part No.	Description	Qty. Req'd.	Ref. No.	Part No.	Description	Qty. Req'd.
1	470090	Gas Pickup Assembly	1	28	426845	. Gas Cap Cover Plate	1
2	425317	. Pickup Screen	1	29	426844	. Gas Cap Spring	1
3	304614	. "O" Ring	2	30	425994	. Gas Cap Valve Plate	1
4	425343	Flex Pickup Line	1	31	426013	. Gas Cap Valve	1
5	425330	Flex Pickup Connector	1	32	425716	. Gas Cap	1
6	425748	Filter Bowl Gasket	1	33	425719	. Gas Cap Chain	1
7	425669	Filter Base Gasket	1	34	425087	. Gas Cap Gasket	1
8	425668	Filter Base	1	35	425718	. Gas Cap Lock Spring	1
9	425670	Filter Felt	1	36	425029	. Gas Cap Rivet	1
10	425422	Filter Bowl	1	*	470434	Air Cleaner Assembly	1
11	470194	Clamp Unit	1	37	425919	. Wing Nut	1
12	306514	Filter Base Screw	1	38	426228	. Air Cleaner Stem	1
13	470432	Crankcase Assembly	1	39	133175	. Jam Nut	1
14	425075	. Fan Housing Stud	4	40	426734	. Air Cleaner Nut	1
15	425078	. Strut Stud Nut	2	41	426804	. Filter Cover	1
16	425578	. Cylinder Stud, Long	2	42	302474	. Washer	1
17	426121	. Strut Stud	1	43	426226	. Filter Element	1
18	426747	. Cylinder Stud, Short	1	44	426219	. Filter Support Plate	1
19	425027	. Strut Stud, Short	1	45	426114	. Air Cleaner Body	1
†20	426702	. Carburetor Stud	2	**	425669	. Gasket	1
21	470436	Outer Shroud Assembly	1	46	304616	Roll Pin	1
22	426224	. Rear Shroud Hook	1	47	426636	Throttle Hinge Pin	1
23	425653	. Front Shroud Hook	1	48	470437	Catch Link Assembly	1
24	426071	. Rivet	2	49	305230	Filter Base Screw	1
25	308014	. Rivet	2	50	307246	Air Cleaner Screw	2
26	426201	Throttle Link	1	51	426207	Throttle Trigger	1
*	470726	Gas Cap Assembly	1	52	425631	Gas Line Fitting	1
27	425633	. Gas Cap Screw	3	53	426206	Filter Cover	1

* Not Shown

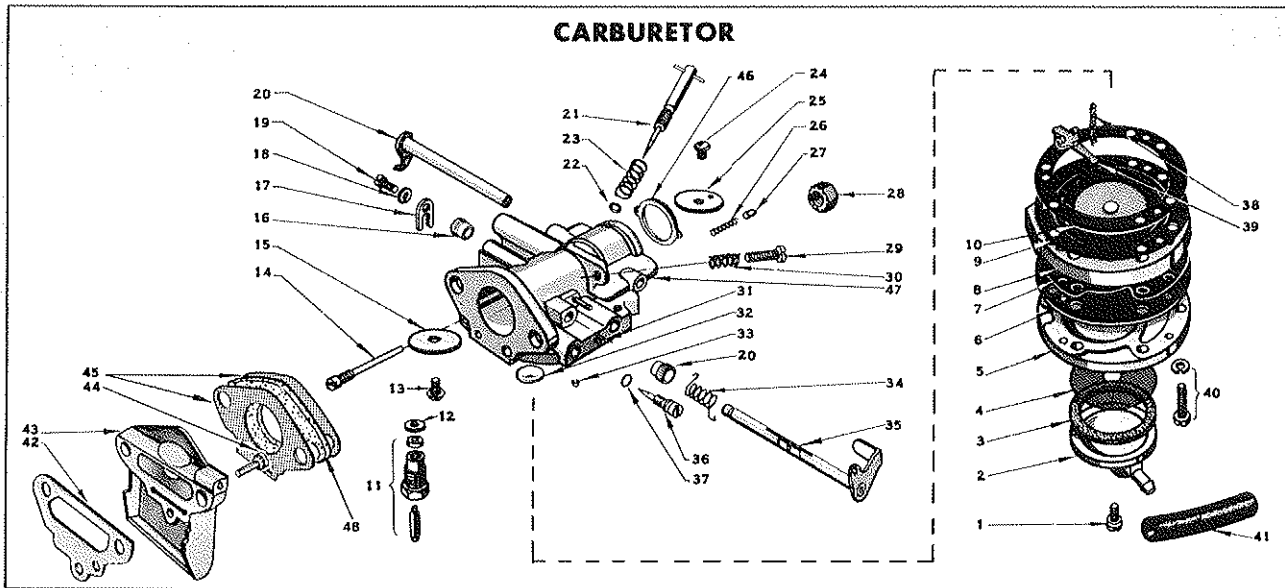
** Shown with Carburetor Parts List

○ Effective at Serial No. 66891

○○ Used prior to Serial No. 66891

† When servicing unmodified Models 600 and 600A not having this stud size install also item 29 page 57 and items 11, 45 and 48 on page 58.

600 SERIES MODELS 600, 600A AND 610



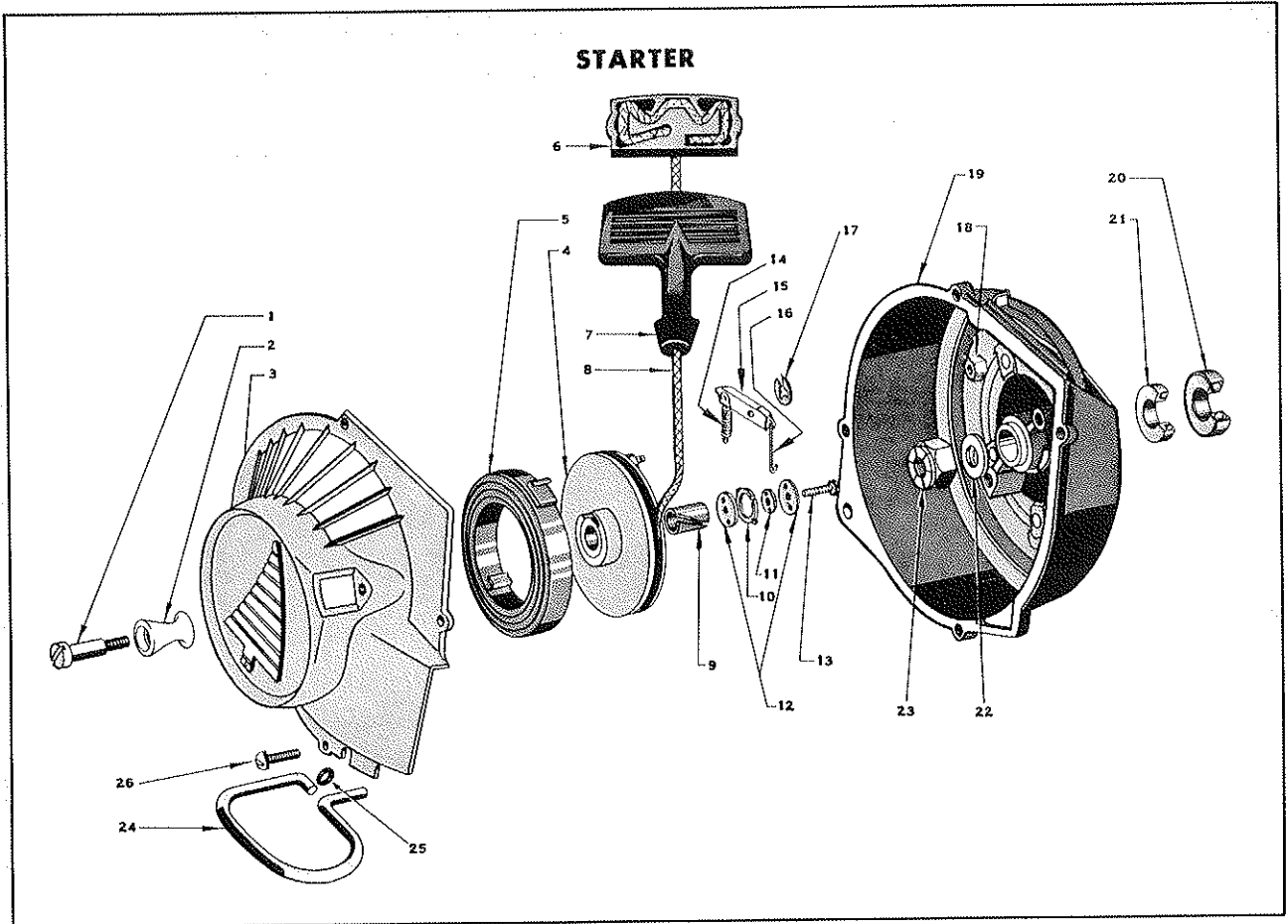
CARBURETOR PARTS LIST

Ref. No.	Part No.	Description	Qty. Req'd.	Ref. No.	Part No.	Description	Qty. Req'd.
*	470171	Carburetor Assembly	1	26	425450	. Choke Friction Spring	1
**1	425741	. Fuel Strainer Cover Retaining Screw	1	27	425407	. Choke Friction Pin	1
2	425492	. Fuel Strainer Cover	1	28	304609	. Carburetor Nut	2
**3	425493	. Fuel Strainer Cover Gasket	1	**29	425401	. Idle Speed Regulating Screw	1
**4	425494	. Fuel Strainer Screen	1	**30	425386	. Idle Speed Regulating Screw Spring	1
5	425490	. Fuel Pump Body	1	31	425391	. Diaphragm Chamber Drain Screw	1
**6	425495	. Fuel Pump Diaphragm	1	**32	425394	. Body Channel Welch Plug	1
**7	425506	. Fuel Pump Gasket	1	**33	425501	. Body Channel Cup Plug	1
8	425744	. Diaphragm Cover	1	**34	425505	. Throttle Shaft Return Spring	1
**9	470361	. Diaphragm	1	35	470119	. Throttle Shaft and Lever	1
**10	425496	. Diaphragm Gasket	1	**36	470195	. Idle Adjustment Screw	1
**11	470734	. Inlet Needle, Seat and Gasket	1	**37	425502	. Seal Ring	1
**12	425486	. Inlet Seat Gasket	1	**38	425498	. Inlet Tension Spring	1
**13	426145	. Throttle Shutter Screw	1	**39	425489	. Inlet Control Lever	1
**14	470395	. Inlet Control Lever Pinion Screw	1	40	426146	. Fuel Pump Body Screw and Lockwasher	6
15	425446	. Throttle Shutter	1	41	426398	Fuel Line	1
16	425469	. Throttle Shaft Bushing	2	42	426123	Gasket, Adapter to Crankcase	1
17	425459	. Throttle Shaft Clip	1	43	426193	Carburetor Adapter	1
18	425387	. Throttle Shaft Clip Washer	1	44	304606	Carburetor Adapter Screw	1
19	425390	. Throttle Shaft Clip Retaining Screw	1	**45	425046	Carburetor Gasket	2
20	470196	. Choke Shaft and Lever	1	46	425669	Air Cleaner Gasket	1
**21	470197	. Main Adjustment Screw	1	47	470350	Carburetor Body, Complete with Parts Pressed In	1
**22	425502	. Seal Ring	1	48	425328	Insulating Gasket	1
**23	425747	. Main Adjustment Screw Spring	1				
24	426145	. Choke Shutter Screw	1				
25	425456	. Choke Shutter	1				

*Not Shown

**470325 Repair Parts Kit, Also Includes Carburetor Gasket and Packing Kit 470322.

600 SERIES MODEL 600

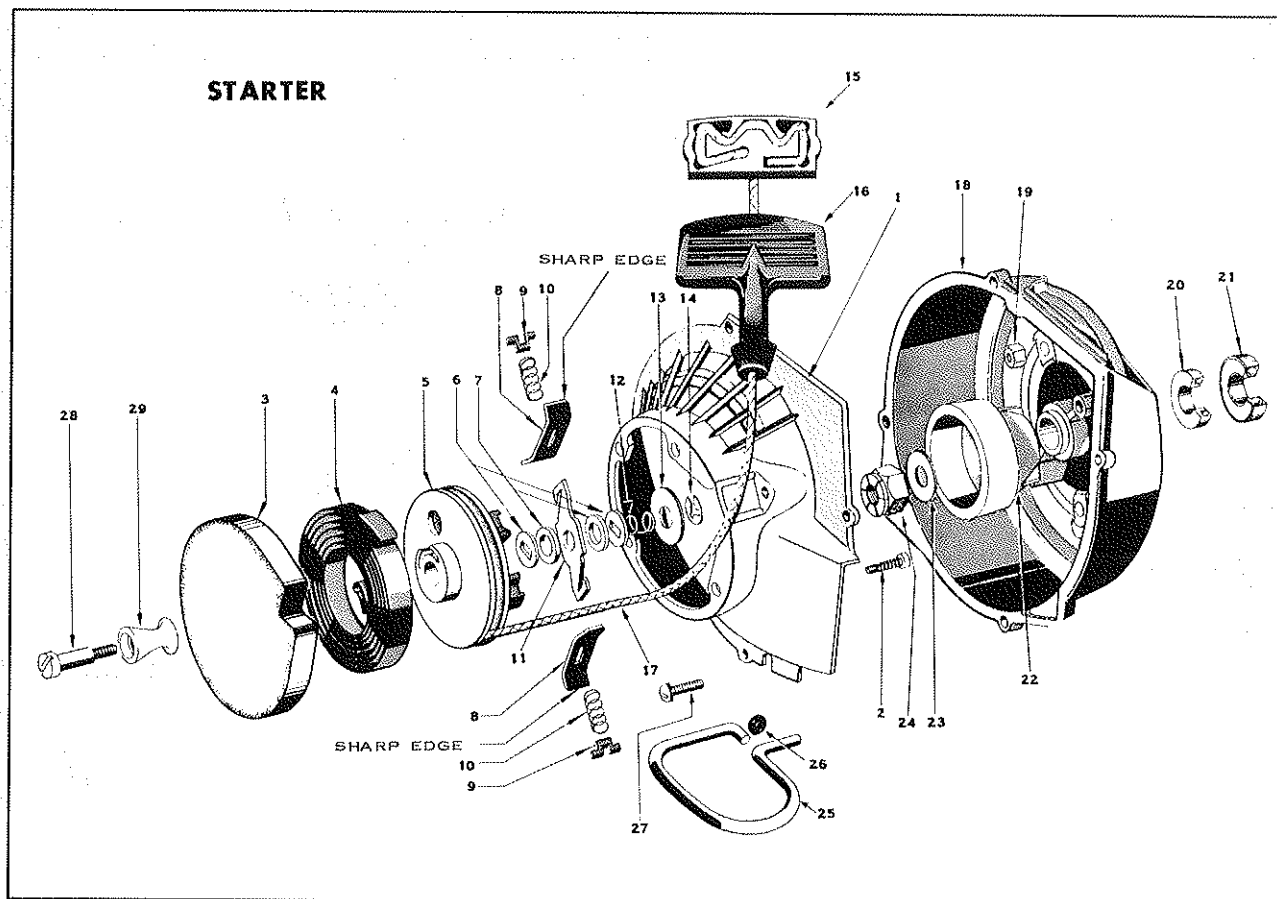


STARTER PARTS LIST

Ref. No.	Part No.	Description	Qty. Req'd.	Ref. No.	Part No.	Description	Qty. Req'd.
*	470444	Starter Unit Assembly	1	13	302948	. Sems Pan Head Screw	1
1	425709	. Roller Pin	1	14	303316	. Pawl Operating Spring	1
2	425665	. Starter Cord Roller	1	15	426211	. Starter Pawl	1
3	426194	. Starter Housing	1	16	426214	. Pawl Operating Link	1
4	470426	. Starter Pulley	1	17	202139	. "E" Type Circlip	1
5	426217	. Starter Rewind Spring	1	18	304609	Fan Housing Nut	4
6	304323	. Cord Anchor	1	19	426120	Fan Housing	1
7	602773	. Starter Cord Handle, (Does Not Incl. 304323)	1	20	425066	Main Bearing	2
8	425596	. Starter Cord	1	21	425076	Magneto End Seal	1
9	426218	. Starter Pulley Bushing	1	22	304671	Flywheel Washer	1
10	426212	. Friction Yoke	1	23	425916	Flywheel Nut	1
11	426216	. Spacer	1	24	470699	Foothold Loop Assy.	1
12	426213	. Friction Plate	2	25	426663	. Grommet "O" Ring	1
				26	302948	Starter Screw	1

*Not Shown

600 SERIES MODELS 600A AND 610



STARTER PARTS LIST

Ref. No.	Part No.	Description	Qty. Req'd.	Ref. No.	Part No.	Description	Qty. Req'd.
† *	470695	Starter Unit With Adapter	1	14	202139	. . . Clip Ring	1
1	426783	. Starter Adapter	1	15	304323	. . . Cord Anchor	1
2	425708	. Starter Screw, Thread Cutting	4	16	602773	. . . Starter Cord Handle	1
*	470012	. Starter Assembly	1	17	425271	. . . Starter Cord	1
3	425275	. . . Starter Cover	1	18	426120	Fan Housing	1
4	425276	. . . Rewind Spring	1	19	304609	Fan Housing Nut	4
5	425270	. . . Rotor Assembly	1	20	425076	Magneto End Seal	1
6	425277	. . . Brake Washer	2	21	425066	Main Bearing	1
7	425280	. . . Fiber Washer	2	22	426784	Starter Cup	1
*	470233	. . . Starter Pawl Assembly	1	23	304671	Flywheel Washer	1
8	425269	. . . Friction Shoe Plate	2	††23	304928	Flywheel Washer	1
9	425273	. . . Spring Retainer	2	24	425916	Flywheel Nut	1
10	425274	. . . Brake Lever Spring	2	25	470699	Foothold Loop Assembly	1
11	425272	. . . Brake Lever	1	26	426663	. Foothold Loop Grommet	1
12	425278	. . . Brake Spring	1	27	302948	Starter Adapter Screw	4
13	425281	. . . Brake Retainer Washer	1	28	425709	Roller Pin	1
				29	425665	Starter Cord Roller	1

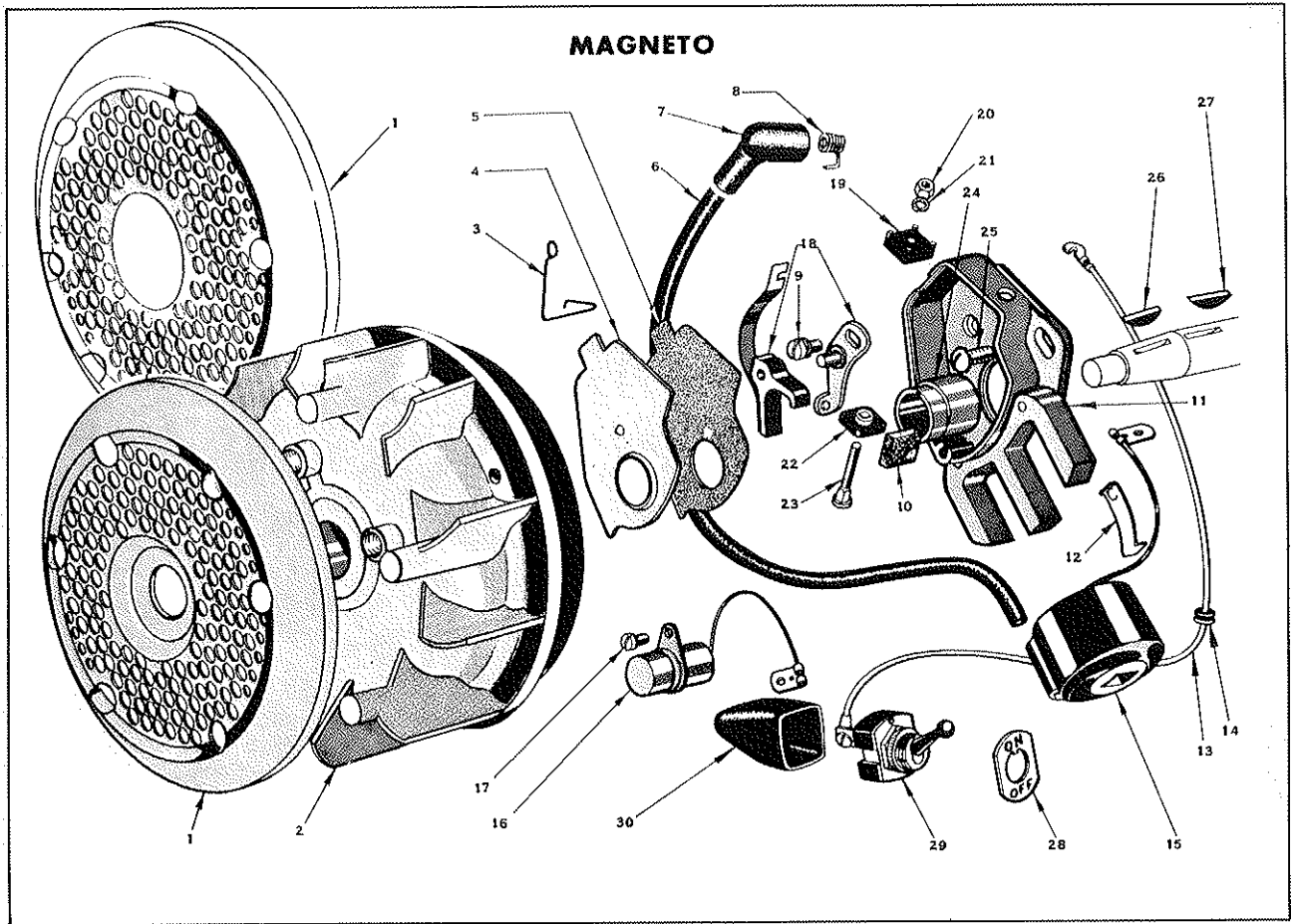
*Not Shown

†Used on converted Model 600 and original equipment on Models 600A and 610.

††Used only on converted Model 600.

NOTE: Part No. 470696 Fairbanks-Morse starter conversion kit is available for Model 600.

600 SERIES MODELS 600, 600A AND 610



MAGNETO PARTS LIST

Ref. No.	Part No.	Description	Qty. Req'd.	Ref. No.	Part No.	Description	Qty. Req'd.
†1	426782	Rotating Screen	1	16	425702	. Condenser and Lead Wire	1
††1	426210	Rotating Screen	1	17	425360	. Condenser Clamp Screw	1
2	426225	Flywheel	1	18	470188	. Breaker Point Set	1
*	470438	Magneto Stator, Complete	1	*	470186	. Terminal Connection Unit	1
3	425698	. Breaker Box Cover Spring	1	19	425699	. . Stud Insulator, Outside	1
4	425689	. Breaker Box Cover	1	20	425697	. . Nut	1
5	425690	. Gasket	1	21	425692	. . Lockwasher	1
6	426232	. High Tension Wire	1	22	425700	. . Stud Insulator, Inside	1
7	580339	. Rubber Sparky Assy.	1	23	425696	. . Stud	1
8	**	. . Sparky Spring		24	425687	Cam	1
9	425693	. Breaker Plate Screw	1	25	304605	Magneto Stator Screw	2
10	425694	. Cam Wiper Felt	1	26	425061	Flywheel Key	1
11	470183	. Stator Plate Group, Stator Plate and Coil Only	1	27	425100	Magneto Cam Key	1
12	425701	. Coil Wedge Spring	1	28	425729	On-Off Switch Plate	1
13	470192	. Switch Wire Assy.	1	29	425101	Ignition Switch	1
14	425338	. . Grommet	1	30	425985	Switch Terminal Cover	1
15	470187	. Coil Group	1				

*Not Shown

**Serviced in assembly only

†Models 600A, 610 and converted Model 600

††Model 600 original equipment