

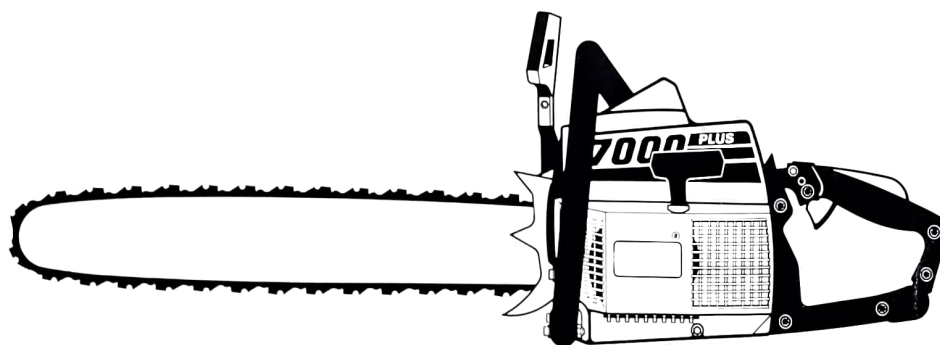
Index 5

1. 1986



PIONEER
PARTNER

7000
plus



Reservdelar

Spare parts

Ersatzteile

Pièces de rechange

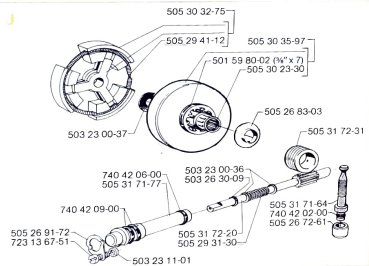
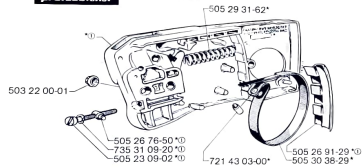
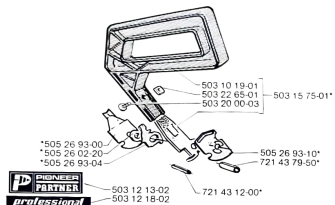
Piezas de recambio

Beställn.-nummer Part number Best. Nr No de commande No de pedido	Ruta Box Viereck Carreau Indice	Anm. Remarks Anm. Notes Apunte	Beställn.-nummer Part number Best. Nr No de commande No de pedido	Ruta Box Viereck Carreau Indice	Anm. Remarks Anm. Notes Apunte	Beställn.-nummer Part number Best. nr No de commande No de pedido	Ruta Box Viereck Carreau Indice	Anm. Remarks Anm. Notes Apunte
501 46 84-01	M	N	503 21 01-02	E	N	505 27 92-16	D	
501 46 87-01	M		503 21 11-02	L		505 27 95-11	E	
501 48 54-01	H		503 21 11-03	F		505 27 95-12	E	
501 48 56-01	H		503 22 00-01	A		505 27 95-13	E	
501 59 80-02	J		503 22 21-02	H		505 29 31-30	J	
501 60 02-02	N		503 22 65-01	A, E, N		505 29 31-62	A	
501 69 17-01	N		503 22 70-01	B, D		505 29 41-12	J	
501 69 98-01	C		503 23 00-11	E		505 29 51-10	L	
501 76 83-01	K		503 23 00-36	J		505 29 56-13	H	
501 82 58-01	K		503 23 00-37	J		505 29 56-14	E	
501 87 76-01	K		503 23 01-01	H		505 29 79-17	L	
502 10 31-01	M		503 23 11-01	J		505 30 23-30	J	
503 08 84-01	M		503 23 51-08	C		505 30 23-33	C, G	
503 10 19-01	A		503 23 96-02	D		505 30 32-75	J	
503 10 87-01	M		503 24 06-02	N		505 30 35-97	J	
503 11 66-01	M		503 25 00-01	G		505 30 38-29	A	
503 11 67-01	M		503 26 30-09	J		505 30 51-20	L	
503 11 68-01	M		503 40 00-01	E		505 31 07-70	K	
503 11 69-01	M		503 40 17-01	E		505 31 22-27	K	
503 11 70-01	M		503 40 18-01	E		505 31 54-75	D	
503 11 71-01	M		503 40 23-01	E		505 31 67-02	M	
503 11 75-01	M		503 40 25-01	E		505 31 67-07	M	
503 11 76-01	M		503 40 41-01	M		505 31 67-17	M	
503 11 77-01	M		503 40 43-01	M		505 31 67-20	M	
503 11 78-01	M	503 41 18-01	E	505 31 67-21	M			
503 11 79-01	M	503 41 75-01	N	505 31 67-31	M			
503 11 80-01	M	503 44 22-01	E	505 31 67-34	M			
503 12 12-02	L	503 44 25-01	K	505 31 67-92	M			
503 12 13-02	A	504 14 00-08	M	505 31 71-64	J			
503 12 14-02	B	504 21 00-50	M	505 31 71-77	J			
503 12 16-01	B	504 30 24-07	K	505 31 72-20	J			
503 12 18-02	A	504 30 24-10	K	505 31 72-31	J, K			
503 12 25-01	M	504 35 72-01	K	505 31 83-53	K			
503 12 81-01	L	505 22 09-14	K	505 32 01-79	H			
503 15 49-01	L	505 23 09-02	A	505 32 01-92	H			
503 15 50-01	L	505 24 49-26	D	505 32 56-24	H			
503 15 53-01	E	505 26 02-20	A	505 34 09-20	H			
503 15 54-01	E	505 26 21-30	N	505 34 11-62	C			
503 15 56-01	E	505 26 21-34	L	505 35 03-94	F			
503 15 57-01	E	505 26 58-14	C	505 35 03-95	F			
503 15 59-01	E	505 26 72-61	J	505 38 13-07	N			
503 15 63-01	E	505 26 76-50	A	506 02 72-01	H			
503 15 64-01	F	505 26 76-73	E	506 02 83-01	M			
503 15 65-01	F	505 26 77-47	E	506 03 48-01	M			
503 15 66-01	K	505 26 83-03	J	506 05 57-01	D, M			
503 15 67-01	K	505 26 91-07	L	506 07 14-01	L			
503 15 68-01	B	505 26 91-28	K	720 13 07-00	K			
503 15 72-01	A	505 26 91-29	A	721 42 58-20	E			
503 15 73-01	A	505 26 91-72	J	721 43 03-00	A			
503 15 75-01	A	505 26 91-79	H	721 43 12-00	A			
503 15 80-01	G	505 26 93-00	A	721 43 79-50	A			
503 15 81-01	C	505 26 93-04	A	721 61 38-00	K			
503 16 40-01	K	505 26 93-10	A	723 12 97-51	H			
503 17 99-01	E	505 26 94-29	E	723 13 67-51	J			
503 20 00-01	E, H, L	505 27 20-63	D	731 23 10-01	L			
503 20 00-03	A	505 27 20-66	C	732 21 14-01	E			
503 20 00-05	C, F	505 27 20-79	D	735 31 09-20	A			
503 20 00-07	K	505 27 21-18	C	735 58 18-00	E			
503 20 00-08	E, K	505 27 21-25	D	735 88 06-00	G			
503 20 00-09	F	505 27 21-28	K	740 42 02-00	J			
503 20 00-10	E	505 27 57-15	K	740 42 06-00	J			
503 20 00-16	E	505 27 72-30	K	740 42 09-00	J			
503 20 00-28	E	505 27 75-16	H	740 44 05-00	K			
503 20 00-34	E	505 27 75-66	H	740 48 18-04	K			
503 20 31-01	L	505 27 75-76	K					
503 20 86-01	B	505 27 91-06	D					

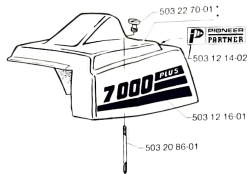
□ 505 27 99-27
Packningsatts
Set of gaskets
Dichtungssatz
Jeu de joints
Juego de junta

N = Ny detalj
New part
Neues Teil
Nouvelle pièce
Nueva pieza

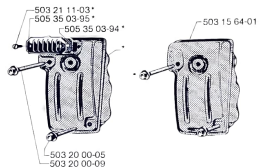
*comp1 903 15 72-01
*comp1 503 15 73-01



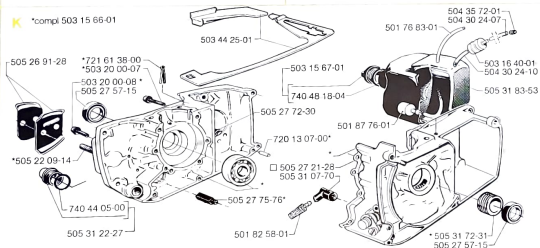
*comp1 503 15 68-01



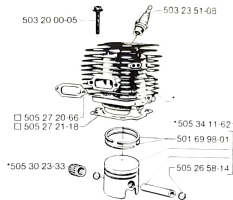
*comp1 503 15 65-01



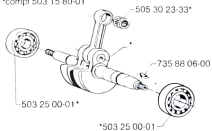
*comp1 503 15 66-01



*comp1 503 15 81-01



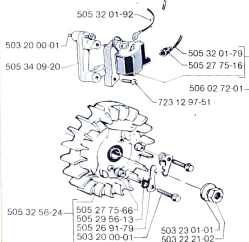
*comp1 503 15 80-01



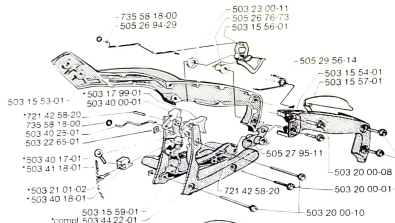
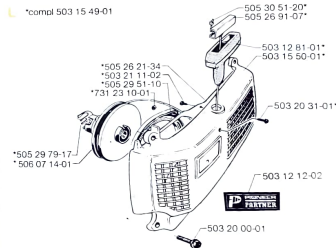
H



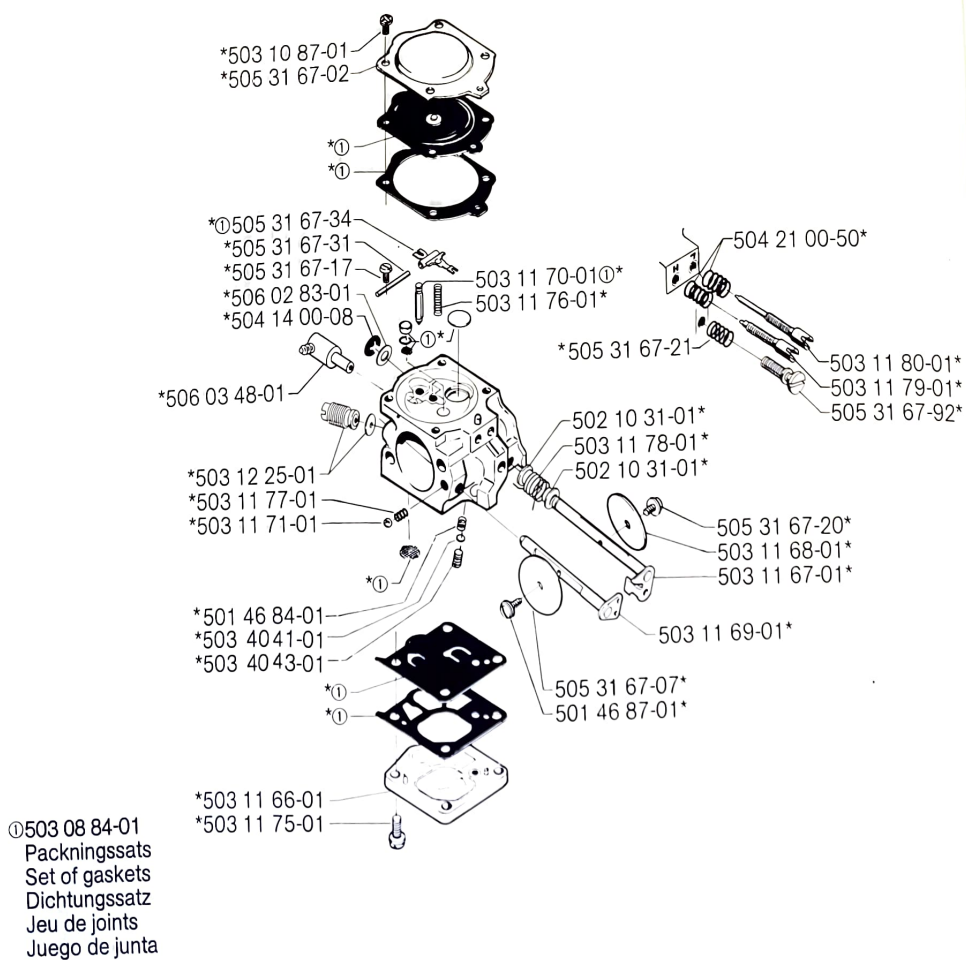
L



*comp1 503 15 49-01



M *compl 506 05 57-01



N Tillbehör
 Accessories
 Zubehöre
 Accessoires
 Accesorios

