

ILLUSTRATED PARTS LIST

MAC 110 MODELS	SERIAL NUMBER PREFIX	MAC 120 MODELS	SERIAL NUMBER PREFIX
600016A	11-, 12-	600016B	11-, 12-
600016C	11-, 12-	600016E	11-
600016D	11-	600016F	11-, 12-
600016G	11-	600016J	11-
600016H	11-, 12-	600016K	11-
600016M	11-, 12-	600016P	11-, 12-
600016N	11-, 12-	600016S	11-, 12-
600016R	11-	600016T	11-
		600016U	11-, 12-

McCulloch chain saws are identified by a model number (in this instance, 600016) followed by a suffix letter (A, B, C, etc.) stamped on the identification plate attached to the saw. Suffix letters denote variations in parts or assemblies in the manufacture of the saw.

Part numbers listed in this IPL which have a suffix letter or letters following the description, indicate the part is used only on the model(s) identified by the letter or letters.

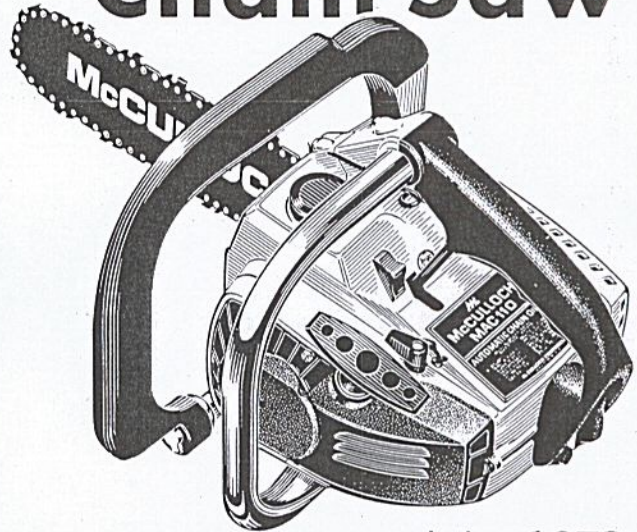
Part numbers and descriptions without suffix letter or letters apply to all versions of the chain saw model.

Part numbers which have one or more dots (.) preceding their descriptions may be ordered individually, but they are also included in the kit or assembly whose description begins directly above the dot(s).

Part numbers which have changed since the previous printing of the IPL covering these saws, are indicated by a dash (-) preceding the new part number.

The policy of McCulloch Corporation is one of continual improvement in design, manufacturing and engineering advancement wherever possible to assure still finer two-cycle power tools. Hence, specifications, equipment, colors, design and manufacturer's suggested list prices are subject to change without notice and McCulloch Corporation reserves the right to make such changes without prior notification or obligation to backfit or supply backfit components for units previously shipped from the factory.

MAC 110 MAC 120 Chain Saw



July 1978

- CONTENTS -

	Page
Figure 1. General	2
Figure 2. CHAIN BRAKE Assembly	4
Figure 3. Carburetor Assembly	4
Figure 4. Powerhead Assembly	6
Bar & Chain Combinations	3
Tools & Accessories	5
Service Specifications	7



FIGURE 1. GENERAL

ITEM NO.	PART NUMBER	DESCRIPTION	UNITS PER ASY.
1	110676	Nut-Hx 1/4 - 28	2
2	110972	Screw-Hx 1/4-28 x 3/4	1
3		CHAIN BRAKE Asy (Fig. 2)	
4		Chain Asy (See below)	
5		Bar (See below)	
6	110639	Screw-Hx hd 12-24 x 1	2
7	-92868A	Cover-Fuel & Oil tank	1
8	-93194A	Washer - Rubber	1
9	92479	Lever - Handguard	1
10	-92743C	Clutch Asy	1
11	93608	. Spring Asy - Clutch	1
12	92668	. Kit - Clutch shoe	2
13	110957	. . Rivet	2
14	85064	. . Plate	2
15	-94247	. Kit - Clutch rotor	1
16	-94244	. . Nut - Clutch	1
17	-94243	. . Plate - Dust	1
18	90150B	Drum/Spkt/Brng Asy	1
19	91222	. Kit - Needle Brng	1
20	110953	Screw - Hx hd 12-24 x 5/8	1
21	110686	Screw - Hx hd 13-16 x 2	1
22	84791	Frame & Grip Asy	1
23	91454A	Kit - Fuel & Oil tank	1
24	91283	. Cap-Fuel & Oil(Unvented)	2
25	91148	. Seal - Fuel vent	1
26	84956	. Pickup - Fuel	1
27	83900A	. Piston - Manual oiler	1
28	83946	. Spring - Piston	1
29	85557	. Body - Oiler	1
30	84611	Rod - Manual oiler	1
31	110672	Screw - Oval hd 4-40 x 1	1
32	83870	Knob - Choke	1
33*		Latch Asy - Throttle	1
34*		. Screw - Long lock	1

ITEM NO.	PART NUMBER	DESCRIPTION	UNITS PER ASY.
35*		. Latch - Throttle	1
36*		. Spring - Compression	1
37	110807	Screw Pan 8-32 x 5/16	2
38	93290	Deflector - Sawdust	1
39	91859	Kit - Shroud Asy	1
40	91853	. Cover - Air cleaner	1
41	91796	. . Screw - Air cleaner	1
42	85127	Filter - Air	1
43	84918	Washer - Air seal	1
44	110953	Screw-Hx hd 12-24 x 5/8	3
45	110959	Screw-Hx hd 8-32 x 1/2	3
46	90425	Cover - Starter	1
47	110041	Screw-Pan hd 8-32 x 1/2	1
48	68497	Washer - Special	1
49	-94492	Drum/Rope Asy-White	1
49	92316	Drum/Rope Asy-Black	1
50	83203	. Rope - Starter	1
51	83078	Spring - Rewind	1
52	91255	Kit - Starter handle	1
53	105490	. Washer - Starter handle	1
54	110953	Screw-Hx hd 12-24 x 5/8	2
55	84520A	Plate - Washer	1
56	84519	Sleeve - Handle	2
57	83852A	Handle (A,C,D,E,G,H,J,K, N,P,R,S,T,U)	1
57	93810	Handle (B,F,M)	1
58	-93869	Trigger - Throttle	1
59	83940	Spring - Trigger	1
60	83935	Contact - Switch	1
61	83936	Protector - Switch	1
62	83934	Button - Switch	1
63	93541	Plate-Name (B,E,F,J,K,P,S, T,U)	1
63	93540	Plate - Name(A,C,D,G,H,M,N,R)	1
63	-93724	Plate - Name, French (H)	1
64		Powerhead Asy (Fig. 4)	

*Part of Carburetor Kit, P/N 90918A, refer to Fig. 3

BAR & CHAIN COMBINATIONS

PART NUMBER	DESCRIPTION
-90745A	Bar-10" Mini Pro (A,M)
-94084	Bar-10" Mini Mac (C,G,R)
90638N	Chain Asy-10" MM 370G (A,C,G,R)
90641N	Chain Asy-10" MP 370G (M)
-90549A	Bar-12" Mini Pro (B,D,F,K,N,P,S, T,U)
90642N	Chain Asy-12" MP 370G (B,D,F,N,P)
90639N	Chain Asy-12" MM 370G (K,S,T,U)
90550	Bar-14" Mini Pro (J)
90640N	Chain Asy-14" MM 370G (J)

MAC 110 MAC 120

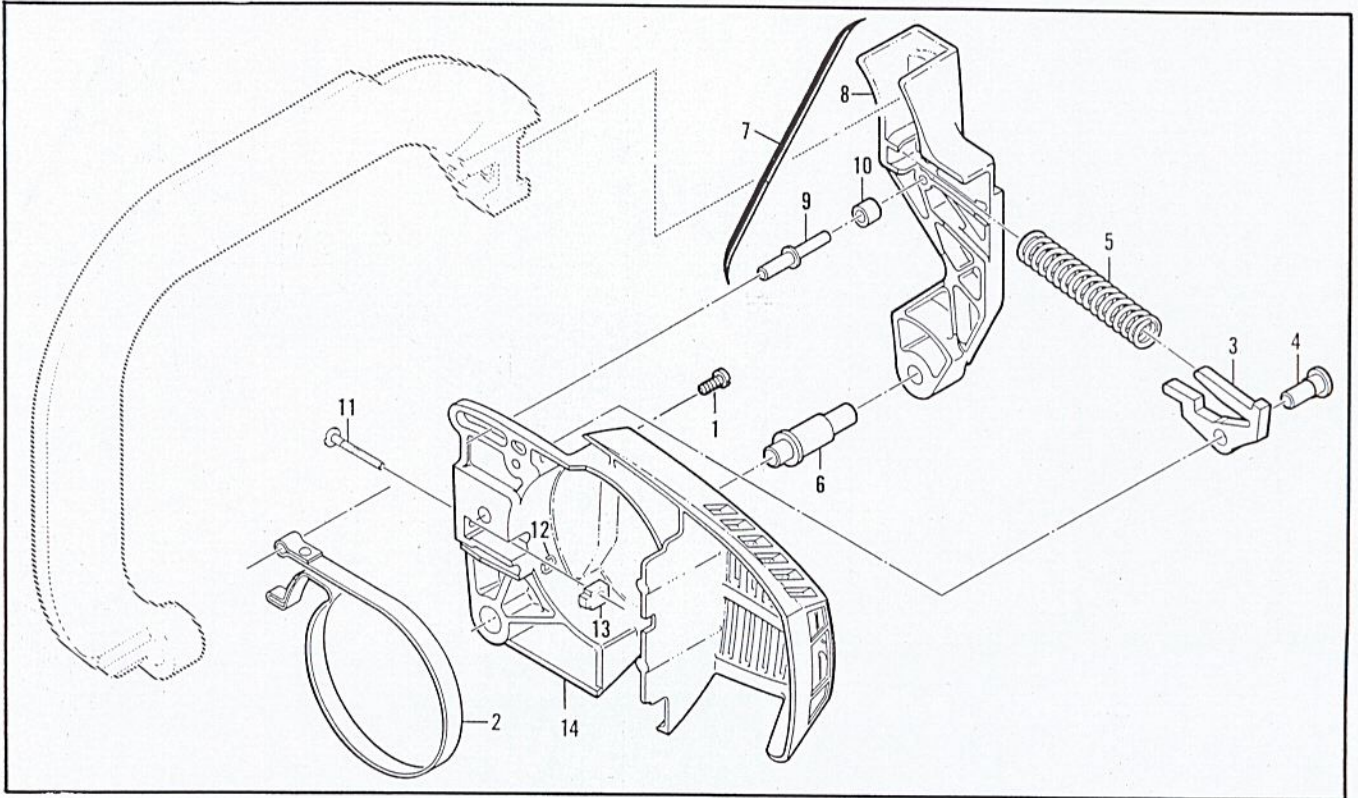


Figure 2. CHAIN BRAKE Assembly

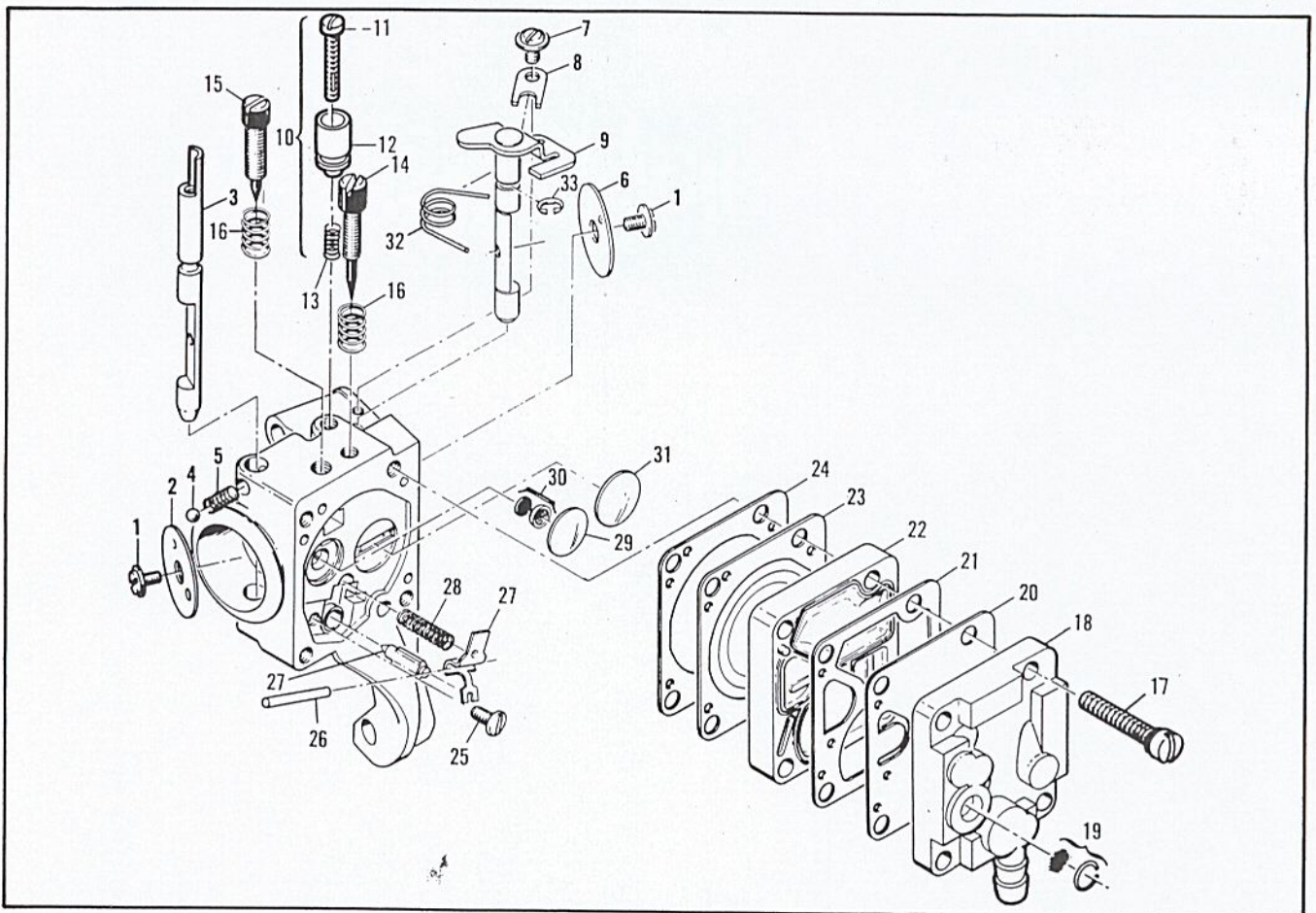


Figure 3. Carburetor Assembly

FIGURE 2. CHAIN BRAKE ASSEMBLY

ITEM NO.	PART NUMBER	DESCRIPTION	UNITS PER ASY.
	-94193	CHAIN BRAKE Asy	1
1	-110656	⊙ . Screw-Pan 8-32 x 5/8	1
2	-94709	⊙ . Band - Brake	1
2	92487	⊙ . Band - Brake	1
3	-94006	⊙ . Latch	1
3	93092	⊙ . Latch	1
4	93602	. Pivot - Latch	1
5	-94007	⊙ . Spring - Compression	1
5	93140	⊙ . Spring - Compression	1
6	92482	. Pivot - Lever	1

ITEM NO.	PART NUMBER	DESCRIPTION	UNITS PER ASY.
7	93467	. Lever Asy - Actuating	1
8	92867	. . Lever	1
9	93139	. . Pin - Roller	1
10	93147	. . Bearing - Roller	1
11	90658	. Screw - Adjusting	1
12	110907	. Ring - Retaining	1
13	84929	. Nut - Bar adjusting	1
14	-94175	⊙ . Housing - Brake	1
14	92866	⊙ . Housing - Brake	1

⊙ Used on models with serial number prefix 12-.
⊙ Used on models with serial number prefix 11-.

TOOLS & ACCESSORIES

PART NUMBER	DESCRIPTION
91735	Kit - Spike
110928	. Screw Hx hd 10-24 x 1/2
85933	Kit - Spark Arrester
91485	Wrench - Socket
85687	Wrench - Screwdriver
88756	Scrench
93283	Case - Carrying, 12"
92976	. Bar Guard 12"
93090	Guide - Timing
90256	Kit - Tune-up
85062	Kit - Piston Tool

PART NUMBER	DESCRIPTION
90607A	Guide - File
90958A	Kit - Tool Maintenance
93900	Kit - Pressure Test
90533	Tool - Pressure Test
501334	Tester - Ignition
68090	Lubri - Gun
85702	Lubricant - Custom, 6 oz. can
85703	Lubricant - Custom, 6 oz. cans 1-6 pack
67537	Loctite
69794	Locquic
110083	R.T.V. Sealant

FIGURE 3. CARBURETOR ASSEMBLY

ITEM NO.	PART NUMBER	DESCRIPTION	UNITS PER ASY.
	90918A	Carburetor Asy-Walbro MDC 15	1
1*	83755	. Screw - Plate	2
2	68556	. Plate - Choke	1
3	85033	. Shaft - Choke	1
4*	100302	. Ball - Choke friction	1
5*	67504	. Spring - Choke friction	1
6	68553	. Plate - Throttle	1
7	70798	. Screw - Clip	1
8	68554	. Clip - Throttle shaft	1
9	94138	. Shaft Asy - Throttle	1
10	93437	. Latch Asy - Throttle	1
11		. . Screw - Long lock	1
12		. . Latch - Throttle	1
13		. . Spring Compression	1
14*	86446	. Needle - Idle	1
15*	86447	. Needle - High speed	1
16*	67502	. Spring - Needle	2
17*	68564	. Screw Asy - Body	4

ITEM NO.	PART NUMBER	DESCRIPTION	UNITS PER ASY.
18	91347	. Cover Asy - Pump	1
19	85629	. . Kit - Vent screen	1
20*	68563	. Diaphragm - Fuel pump	1
21*	85035	. Gasket - Pump diaphragm	1
22	85030	. Body - Fuel pump	1
23*	85036	. Diaphragm - Metering	1
24*	85034	. Gasket - Diaphragm	1
25*	67500	. Screw - Lever pin	1
26*	67508	. Pin - Lever	1
27	85059	. Kit - Needle & Lever	1
28*	68567	. Spring - Lever	1
29*	68559	. Plug-Welsh 7/16	1
30*	83758	. Kit - Check valve	1
31*	68560	. Plug - Welsh 1/2	1
32	89785	. Spring - Throttle return	1
33	94139	. Ring - Retaining	1
	86463	Repair Kit	1

*Included in Repair Kit, P/N 86463

MAC 110 MAC 120

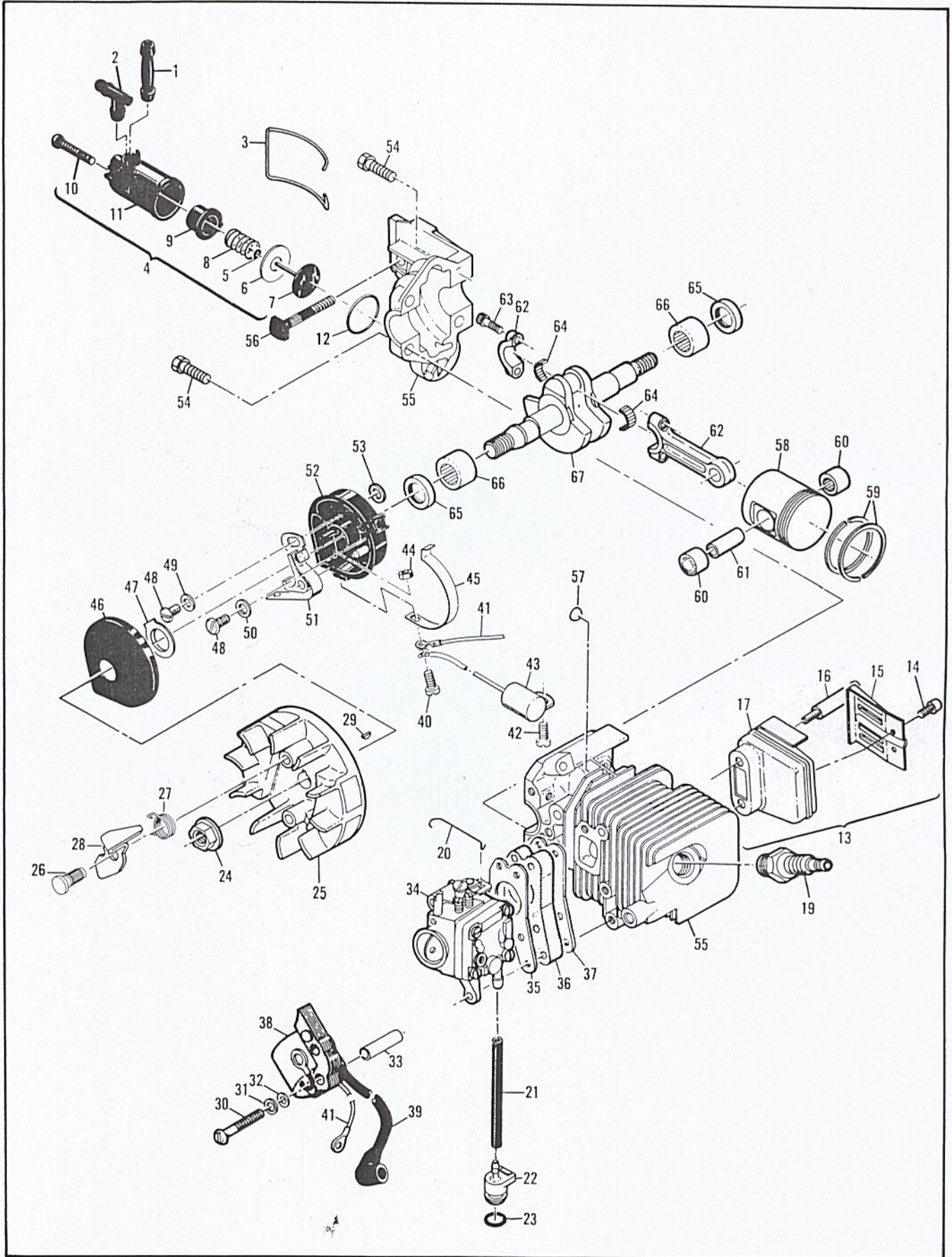


Figure 4. Powerhead Assembly

FIGURE 4. POWERHEAD ASSEMBLY

MAC 110
MAC 120

ITEM NO.	PART NUMBER	DESCRIPTION	UNITS PER ASY.
1	83898	Connector - Outlet	1
2	84613	Connector - Pump	1
3	83896	Bail - Mounting	1
4	83886	Pump Asy - Oiler	1
5	105603	. "0" Ring	1
6	85769	. Ring - Pump piston	1
7	92204	. Piston Asy - Pump	1
8	83891	. Spring - Pump	1
9	83890	. Sleeve - Pump	1
10	110651	. Screw - Adjustment	1
11	83887	. Body Asy - Pump	1
12	110653	. "0" Ring	1
13	92962	Kit - Muffler	1
14	110681	. Screw - Skt hd 10-24 x 1/4	2
15	92961	. Deflector - Exhaust	1
16	93036	. Screw - Special	2
17	93655	. Body Cover	1
18		- Deleted -	
19	63097	Spark Plug (A,C,D,G,J, K,N,P,R,S,T,U)	1
19	93018	Spark Plug (B,E,F,H,M)	1
20	89274	Rod - Throttle	1
21	89059	Hose - Fuel	1
22	90660	Adaptor - Fuel hose	1
23	110908	"0" Ring	1
24	110970	Nut-Hx 5/16 - 24	1
25	-94513	⊙ Flywheel/Pawl Asy	1
26	68796	⊙ . Pin - Pawl	2
27	67814	⊙ . Spring - Pawl	2
28	-94493	⊙ . Pawl - Starter	2
25	91961	⊙ Flywheel/Pawl Asy	1
26	68796	⊙ . Pin - Pawl	2
27	67814	⊙ . Spring - Pawl	2
28	91872	⊙ . Pawl - Starter	2
29	102164	Key - Woodruff	1
30	110586	Screw - Pan hd 8 - 32 x 1-3/4	3
31	105976	Washer - #8	3
32	67177	Washer - Insulating	3
33	68198	Tube - Insulating	3
34		Carburetor Asy (Fig. 3)	

ITEM NO.	PART NUMBER	DESCRIPTION	UNITS PER ASY.
35	68197	Gasket - Carburetor	1
36	90713	Insulator - Carburetor	1
37	90714	Gasket - Insulator	1
38	84957	Coil & Lamination Asy	1
39	50120	. Wire Asy-Spark plug	1
40	110617	Screw-Pan hd 6-32 x 5/8	1
41	69344	Wire Asy - Coil	1
42	110041	Screw-Pan hd 8 - 32 x 1/2 s/t	1
43	85358	Condenser	1
44	110975	Nut - Hx 6-32	1
45	84502	Connector - Stop switch	1
46	67841	Cover - Breaker box	1
47	69323	Seal - Breaker box	1
48	110969	Screw-Hx hd 8-32 x 1/2	2
49	69322	Washer - Special	1
50	105976	Washer - #8	1
51	88811	Breaker Asy	1
52	84505A	Kit - Breaker Box	1
53	92037	. Washer	1
54	110639	Screw - Hx hd 12-24 x 1	4
55	-94326	⊙ Cyl/C'Case Asy	1
56	83856	⊙ . Bolt - Bar mounting	1
57	110914	⊙ . Plug - Cup	4
58	-94476	⊙ Piston Asy	1
59	-87165	⊙ . Set - Piston Rings	1
60	110538	⊙ . Bearing - Needle	2
55	92279	⊙ Cyl/C'Case Asy	1
56	83856	⊙ . Bolt - Bar mounting	1
57	110914	⊙ . Plug - Cup	4
58	92274	⊙ . Piston Asy	1
59	92752	⊙ . . Set - Piston Rings	1
60	110538	⊙ . . Bearing - Needle	2
61	66867	Pin - Piston	1
62	68097	Connecting Rod Asy	1
63	66853	. Screw - Special	2
64	68095	. Roller - Needle (Set of 20)	1
65	83859	Seal - Oil	2
66	66854	Bearing - Needle	2
67	91932	Crankshaft	1

- ⊙ Used on models with white Drum/Rope Asy, P/N 94492 (Fig. 1).
- ⊙ Used on models with black Drum/Rope Asy, P/N 92316 (Fig. 1).
- ⊙ Used on models with serial number prefix 12-.
- ⊙ Used on models with serial number prefix 11-.

SERVICE SPECIFICATIONS

Displacement (11-) 1.8 cu. in.
Displacement (12-) 2.0 cu. in.
Bore and Stroke (11-) 1.375 x 1.201 in. (34.9 x 30.5 mm)
Bore and Stroke (12-) 1.430 x 1.201 in. (36.5 x 30.5 mm)
Bearings Main: Needle Con. Rod: Needle
Intake System 3RD Port, Piston Timed
Fuel Tank Capacity 10.8 fl. oz. (320 cc)
Chain Oiler Capacity 3.2 fl. oz. (95 cc)
Clutch Engaging Speed 3800 to 4200 R.P.M.
Idle Speed 2700 to 2900 R.P.M.
Ignition Magneto*
Carburetor Diaphragm Type, 2 needle adjustment

Fuel Type Regular grade, leaded
Fuel - Oil Mixture 40:1 w/McCulloch Oil
Filtering System, Fuel Felt Fuel Filter
Filtering System, Air Felt Air Filter
Lamination Gap008 to .012" (.203 to .304 mm)
Breaker Point Gap018" (.457 mm)
Timing 260 B.T.D.C.
Piston Rings 2 Cast Iron Compression rings
Weight (w/bar and chain)	
Mac 110: 9.6 lbs. (4.3 kg)
Mac 120: 9.7 lbs. (4.4 kg)