

ILLUSTRATED PARTS LIST

| MODELS | SERIAL NUMBER PREFIX | MODELS | SERIAL NUMBER PREFIX |
|---------|----------------------|---------|----------------------|
| 600022B | 11- | 600022G | 11- |
| 600022E | 11- | 600022K | 11- |
| 600022F | 11- | 600022U | 11- |
| | | | |

McC Model Chain Saws are identified by a model number (000000) followed by a suffix letter (A, B, C, etc.) stamped on the identification plate attached to the saw. Suffix letters denote variations in parts or assemblies in the manufacture of the saw.

Part numbers listed in this IPL which have a suffix letter or letters following the description, indicate the part is used only on the model(s) identified by the letter or letters.

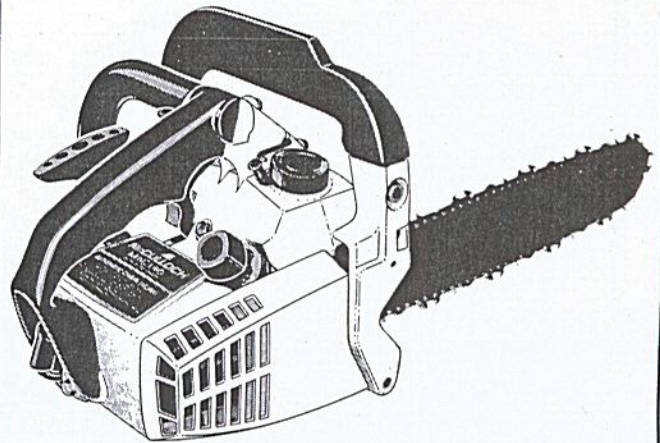
Part numbers and descriptions without suffix letter or letters apply to all models of the MAC 140 chain saw.

Part numbers which have one or more dots (.) preceding their description may be ordered individually but they are also included in the kit or assembly whose description begins directly above the dot(s).

Part numbers which have changed since the previous printing of the IPL covering these saws, are indicated by a dash (-) preceding the new part number.

The policy of McCulloch Corporation is one of continual improvement in design, manufacturing and engineering advancement wherever possible to assure still finer two-cycle power tools. Hence, specifications, equipment, colors, design and manufacturer's suggested list prices are subject to change without notice and McCulloch Corporation reserves the right to make such changes without prior notification or obligation to backfit or supply backfit components for units previously shipped from the factory.

MAC 140 Chain Saw



JANUARY 1977

- CONTENTS -

| | <u>Page</u> |
|-------------------------------------|-------------|
| Figure 1. General | 2 |
| Figure 2. CHAIN BRAKE Assembly ... | 4 |
| Figure 3. Carburetor Assembly | 4 |
| Figure 4. Powerhead Assembly | 6 |
| Accessories | 3 |
| Service Specifications | 7 |

McCULLOCH

MAC 140

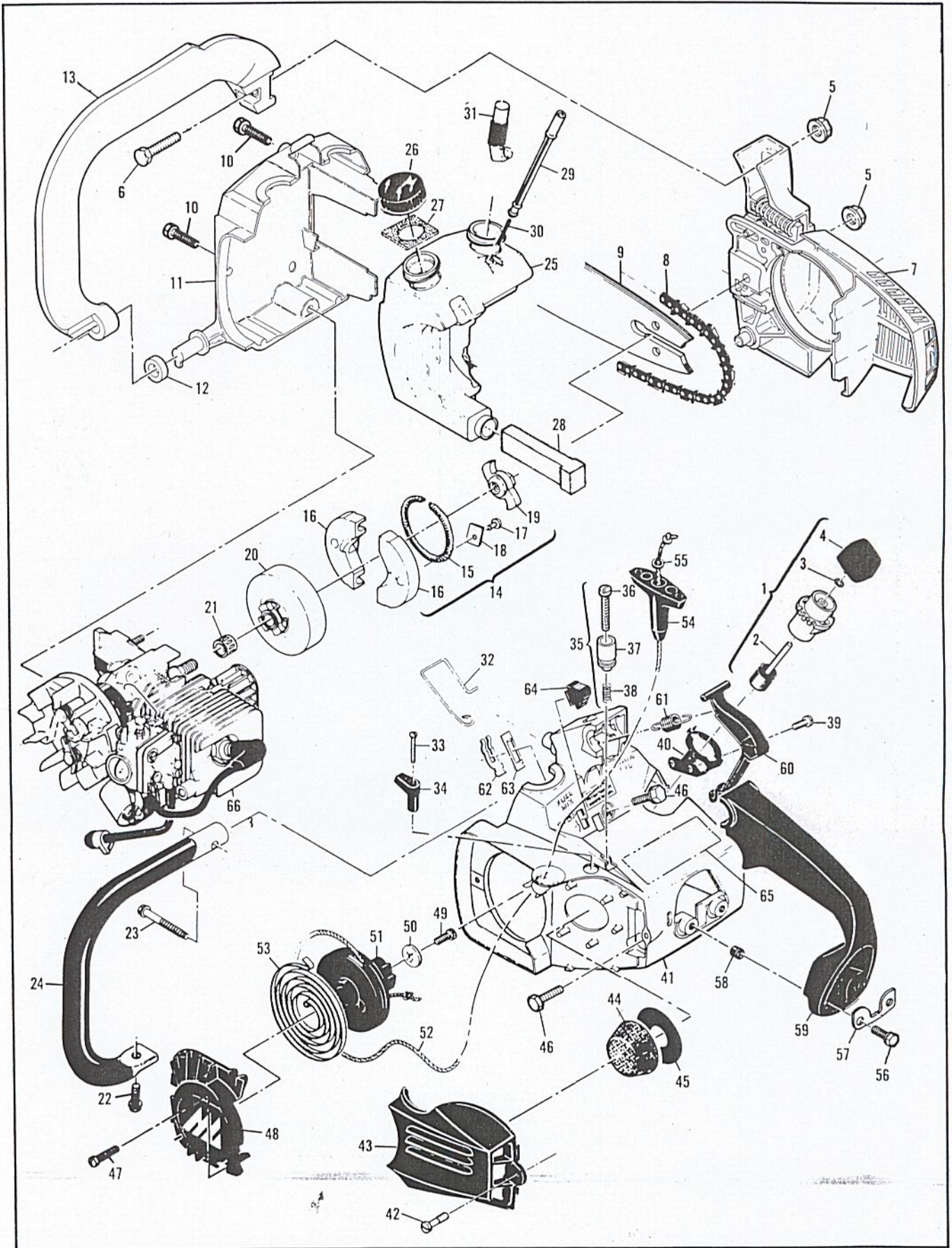


Figure 1. General

Figure 1. General

| Item No. | Part Number | Description | Units Per Asy |
|----------|-------------|-----------------------------|---------------|
| 1 | 92588 | Grinder Asy-AUTO SHARP | 1 |
| 2 | 92587 | . Wheel Asy-Grinding | 1 |
| 3 | 110968 | . . Ring-Retaining | 1 |
| 4 | 92582 | . Knob | 1 |
| 5 | 110676 | Nut-Hx 1/4-28 | 2 |
| 6 | 110972 | Screw-Hx 1/4-28 | 1 |
| 7 | | CHAIN BRAKE Asy (Fig.2) | |
| 8 | | Chain Asy (See Accessories) | |
| 9 | | Bar (See Accessories) | |
| 10 | 110639 | Screw-Hx hd 12-24 x 1 | 2 |
| 11 | 92868 | Cover-Fuel & Oil tank | 1 |
| 12 | 93194 | Washer-Rubber | 1 |
| 13 | 92479 | Lever-Handguard | 1 |
| 14 | 92743 | Clutch Asy | 1 |
| 15 | 93608 | . Spring Asy-Clutch | 1 |
| 16 | 92668 | . Kit-Clutch shoe | 2 |
| 17 | 110957 | . . Rivet | 2 |
| 18 | 85064 | . . Plate | 2 |
| 19 | 92721 | . Spider | 1 |
| 20 | 90150B | Drum/Spkt/Brng Asy | 1 |
| 21 | 91222 | . Kit-Needle Brng | 1 |
| 22 | 110953 | Screw-Hx hd 12-24 x 5/8 | 1 |
| 23 | 110686 | Screw-Hx hd 13-16 x 2 | 1 |
| 24 | 84791 | Frame & Grip Asy | 1 |
| 25 | 91454A | Kit-Fuel & Oil tank | 1 |
| 26 | 91283 | . Cap-Fuel & Oil (Unvented) | 2 |
| 27 | 91148 | . Seal-Fuel vent | 1 |
| 28 | 84956 | . Pickup-Fuel | 1 |
| 29 | 83900A | . Piston-Manual oiler | 1 |
| 30 | 83946 | . Spring-Piston | 1 |
| 31 | 85557 | . Body-Oiler | 1 |
| 32 | 84611 | Rod-Manual oiler | 1 |
| 33 | 110672 | Screw-Oval hd 4-40 x 1 | 1 |
| 34 | 83870 | Knob-Choke | 1 |

| Item No. | Part Number | Description | Units Per Asy |
|----------|-------------|--------------------------------|---------------|
| 35* | | Latch Asy-Throttle | 1 |
| 36* | | . Screw-Long lock | 1 |
| 37* | | . Latch-Throttle | 1 |
| 38* | | . Spring-Compression | 1 |
| 39 | 110597 | Screw-Pan hd 8-32 x 1/2 (SEMS) | 2 |
| 40 | 92581 | Bracket-AUTO SHARP | 1 |
| 41 | 92589 | Kit-Shroud Asy | 1 |
| 42 | 91796 | . Screw-Air cleaner | 1 |
| 43 | 91853 | . Cover-Air cleaner | 1 |
| 44 | 85127 | Filter-Air | 1 |
| 45 | 84918 | Washer-Air seal | 1 |
| 46 | 110953 | Screw-Hx hd 12-24 x 5/8 | 3 |
| 47 | 110959 | Screw-Hx hd 8-32 x 1/2 | 3 |
| 48 | 90425 | Cover-Starter | 1 |
| 49 | 110041 | Screw-Pan hd 8-32 x 1/2 | 1 |
| 50 | 68497 | Washer-Special | 1 |
| 51 | 92316 | Drum/Rope Asy | 1 |
| 52 | 83203 | . Rope-Starter | 1 |
| 53 | 83078 | Spring-Rewind | 1 |
| 54 | 91255 | Kit-Starter handle | 1 |
| 55 | 105490 | . Washer-Starter handle | 1 |
| 56 | 110953 | Screw-Hx hd 12-24 x 5/8 | 1 |
| 57 | 84520A | Plate-Washer | 1 |
| 58 | 84519 | Sleeve-Handle | 2 |
| 59 | 83852A | Handle | 1 |
| 60 | 83878 | Trigger | 1 |
| 61 | 83940 | Spring-Trigger | 1 |
| 62 | 83935 | Contact-Switch | 1 |
| 63 | 83936 | Protector-Switch | 1 |
| 64 | 83934 | Button-Switch | 1 |
| 65 | 93545 | Plate-Name | 1 |
| 66 | | Powerhead Asy (Fig. 4) | |

*Part of Carburetor Kit, P/N 90918A, refer to Fig. 3.

Accessories

| Part Number | Description |
|-------------|---------------------------|
| 90550 | Bar-14" Mini Pro |
| 92600N | Chain-AS 370G |
| 93090 | Guide-Timing |
| 93282 | Case-Carrying (14" Guard) |
| 90256 | Kit-Tune up |

| Part Number | Description |
|-------------|--------------------|
| 68915A | Kit-Piston Tool |
| 89685 | Kit-Spark Arrester |
| 88756 | Scrench |
| 90607A | Guide-File |
| 92977 | Guard-Bar, 14" |

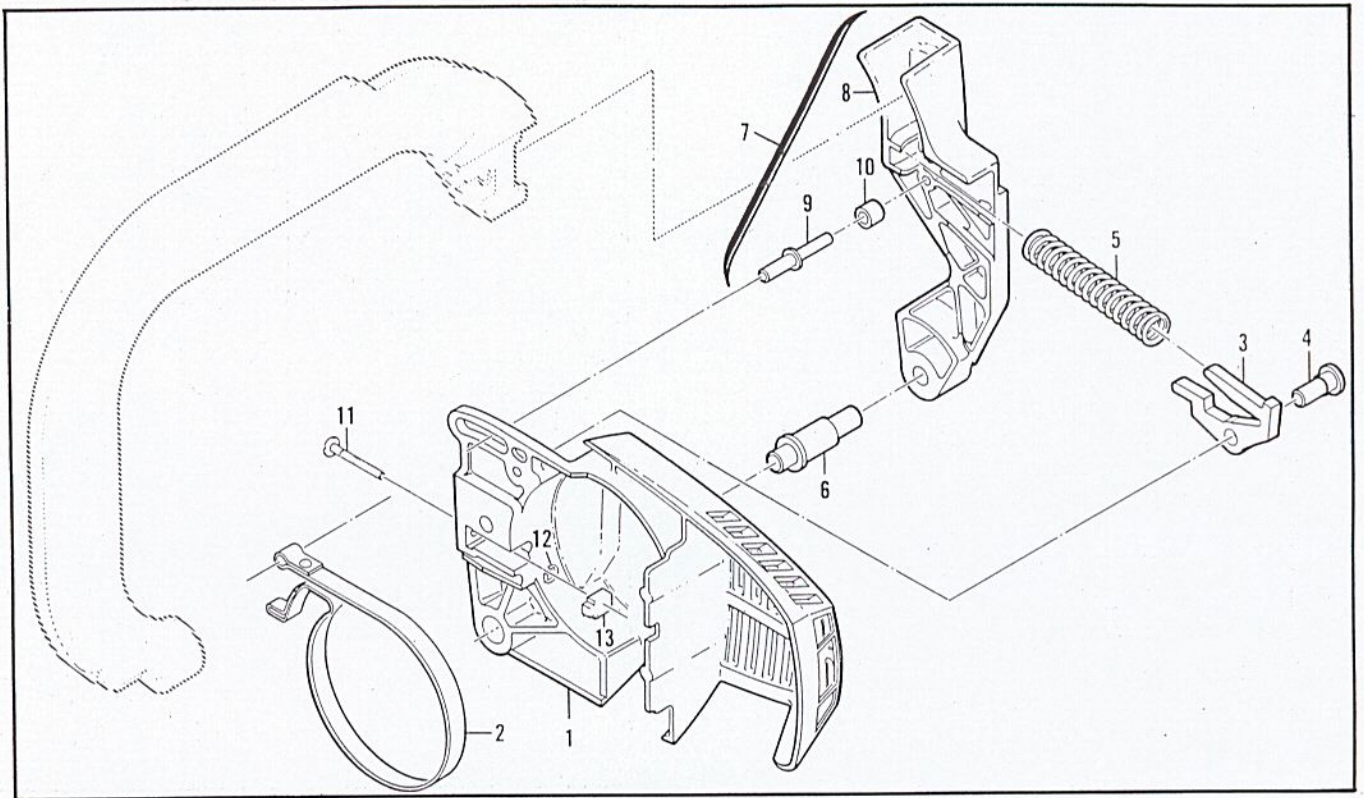


Figure 2. CHAIN BRAKE Assembly

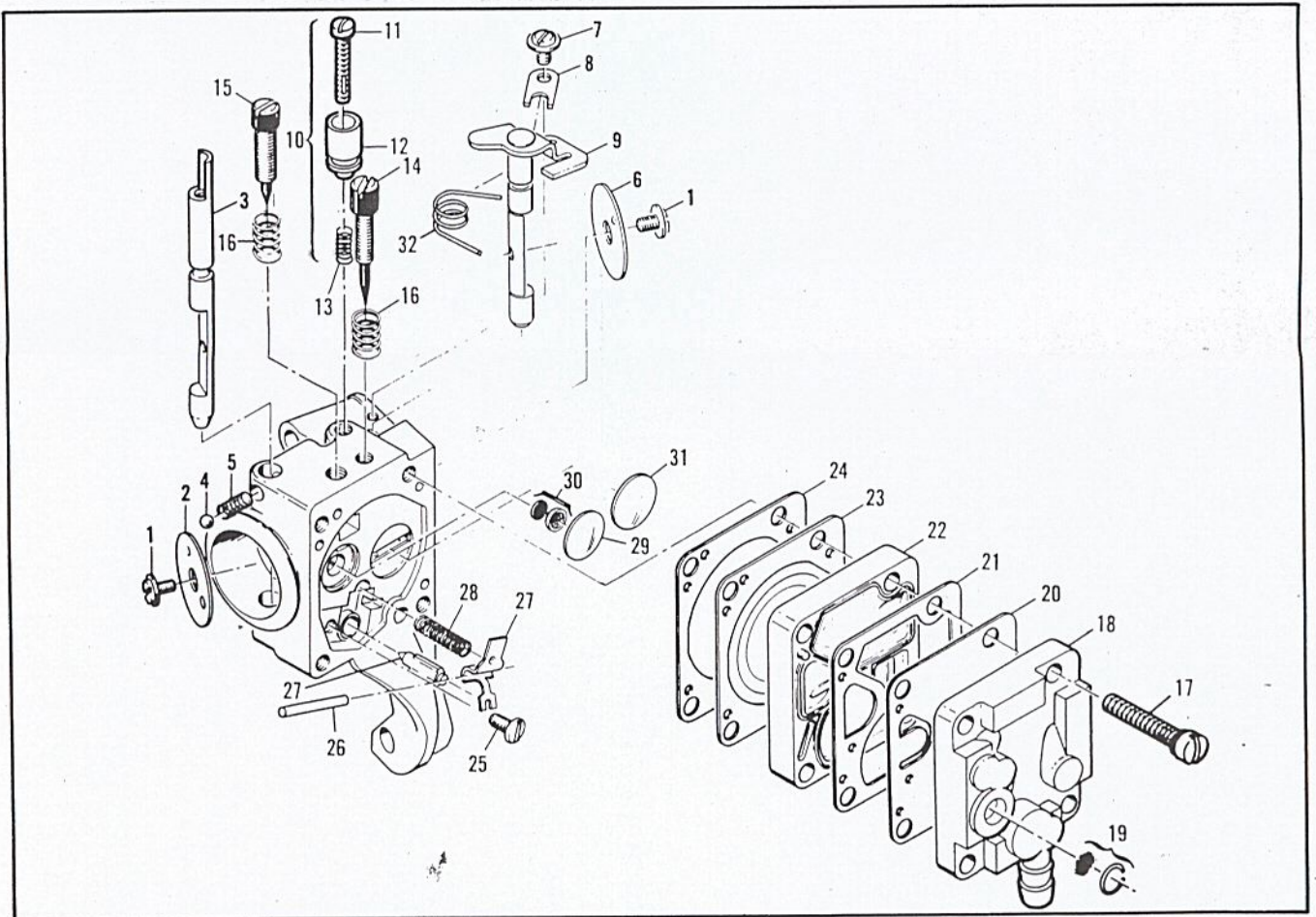


Figure 3. Carburetor Assembly

Figure 2. CHAIN BRAKE Assembly

| Item No. | Part Number | Description | Units Per Asy | Item No. | Part Number | Description | Units Per Asy |
|----------|-------------|-----------------|---------------|----------|-------------|-----------------------|---------------|
| | 92489 | CHAIN BRAKE Asy | | 7 | 93467 | . Lever Asy-Actuating | 1 |
| 1 | 92866 | . Housing-Brake | 1 | 8 | 92867 | . . Lever | 1 |
| 2 | 92487 | . Band-Brake | 1 | 9 | 93139 | . . Pin-Roller | 1 |
| 3 | 93092 | . Latch | 1 | 10 | 93147 | . . Bearing-Roller | 1 |
| 4 | 92485 | . Pivot-Latch | 1 | 11 | 90658 | . Screw-Adjusting | 1 |
| 5 | 93140 | . Spring | 1 | 12 | 110907 | . Ring-Retaining | 1 |
| 6 | 92482 | . Pivot-Lever | 1 | 13 | 84929 | . Nut-Bar adj. | 1 |

Figure 3. Carburetor Assembly

| Item No. | Part Number | Description | Units Per Asy | Item No. | Part Number | Description | Units Per Asy |
|----------|-------------|---------------------------------|---------------|----------|-------------|-----------------------------|---------------|
| | 90918A | Carburetor Asy-Walbro MDC 13 | 1 | 18 | 91347 | . Cover Asy-Pump | 1 |
| 1* | 83755 | . Screw-Plate | 2 | 19 | 85629 | . . Kit-Vent screen | 1 |
| 2 | 68556 | . Plate-Choke | 1 | 20* | 68563 | . Diaphragm-Fuel pump | 1 |
| 3 | 85033 | . Shaft-Choke | 1 | 21* | 85035 | . Gasket-Pump diaphragm | 1 |
| 4* | 100302 | . Ball-Choke friction | 1 | 22 | 85030 | . Body-Fuel pump | 1 |
| 5* | 67504 | . Spring-Choke friction | 1 | 23* | 85036 | . Diaphragm-Metering | 1 |
| 6 | 68553 | . Plate-Throttle | 1 | 24* | 85034 | . Gasket-Diaphragm | 1 |
| 7 | 70798 | . Screw-Clip | 1 | 25* | 67500 | . Screw-Lever pin | 1 |
| 8 | 68554 | . Clip-Throttle shaft | 1 | 26* | 67508 | . Pin-Lever | 1 |
| 9 | 90471 | . Shaft Asy-Throttle | 1 | 27 | 85059 | . Kit-Needle & Lever | 1 |
| 10 | 93437 | . Latch Asy-Throttle | 1 | 28* | 68567 | . Spring-Lever | 1 |
| 11 | | . . Screw-Long lock | 1 | 29* | 68559 | . Plug-Welsh 7/16 | 1 |
| 12 | | . . Latch-Throttle | 1 | 30* | 83758 | . Kit-Check valve | 1 |
| 13 | | . . Spring Compression | 1 | 31* | 68560 | . Plug-Welsh 1/2 | 1 |
| 14* | 86446 | . Needle-Idle | 1 | 32 | 89785 | . Spring-Throttle return | 1 |
| 15* | 86447 | . Needle-High speed | 1 | | 86463 | Repair Kit | |
| 16* | 67502 | . Spring-Needle | 2 | | | | |
| 17* | 68564 | . Screw Asy-Body | 4 | | | | |

*Included in Repair Kit, P/N 86463

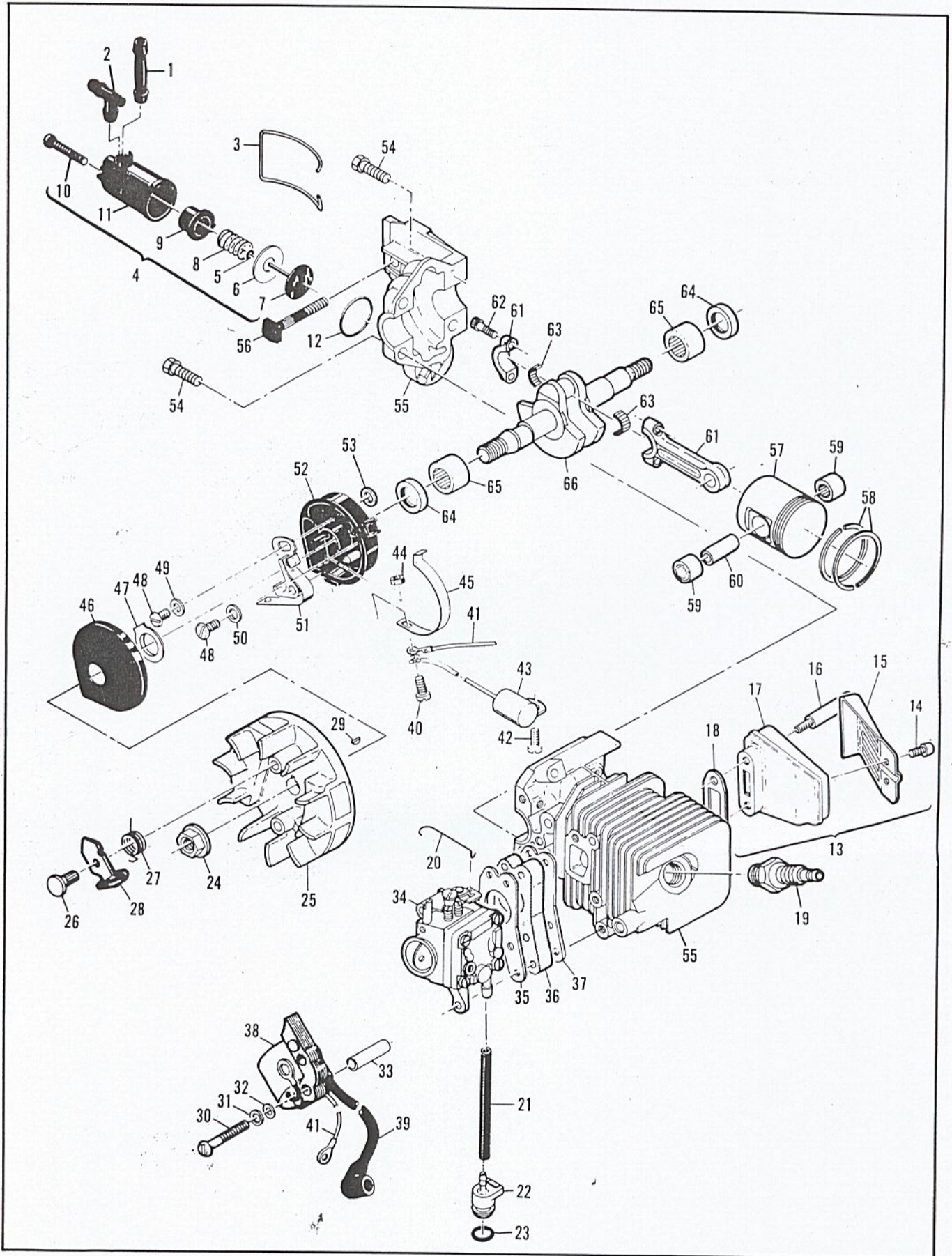


Figure 4. Powerhead Assembly

Figure 4. Powerhead Assembly

| Item No. | Part Number | Description | Units Per Asy | Item No. | Part Number | Description | Units Per Asy |
|----------|-------------|-------------------------------|---------------|----------|-------------|--------------------------------|---------------|
| 1 | 83898 | Connector-Outlet | 1 | 34 | | Carburetor Asy (Fig. 3) | |
| 2 | 84613 | Connector-Pump | 1 | 35 | 68197 | Gasket-Carburetor | 1 |
| 3 | 83896 | Bail-Mounting | 1 | 36 | 90713 | Insulator-Carburetor | 1 |
| 4 | 83886 | Pump Asy-Oiler | 1 | 37 | 90714 | Gasket-Insulator | 1 |
| 5 | 105603 | . "O" Ring | 1 | 38 | 84957 | Coil & Lamination Asy | 1 |
| 6 | 85769 | . Ring-Pump piston | 1 | 39 | 50120 | . Wire Asy-Spark plug | 1 |
| 7 | 92204 | . Piston Asy-Pump | 1 | 40 | 110617 | Screw-Pan hd 6-32 x 5/8 | 1 |
| 8 | 83891 | . Spring-Pump | 1 | 41 | 69344 | Wire Asy-Coil | 1 |
| 9 | 83890 | . Sleeve-Pump | 1 | 42 | 110041 | Screw-Pan hd 8-32 x 1/2 s/t | 1 |
| 10 | 110651 | . Screw-Adjustment | 1 | 43 | 85358 | Condenser | 1 |
| 11 | 83887 | . Body Asy-Pump | 1 | 44 | 110975 | Nut-Hx 6-32 | 1 |
| 12 | 110653 | . "O" Ring | 1 | 45 | 84502 | Connector-Stop switch | 1 |
| 13 | 92962 | Kit-Muffler | 1 | 46 | 67841 | Cover-Breaker box | 1 |
| 14 | 110681 | . Screw-Skt hd 10/24 x 1/4 | 2 | 47 | 69323 | Seal-Breaker box | 1 |
| 15 | 92961 | . Deflector-Exhaust | 1 | 48 | 110969 | Screw-Hx hd 8-32 x 1/2 | 2 |
| 16 | 93036 | . Screw-Special | 2 | 49 | 69322 | Washer-Special | 1 |
| 17 | 92956 | . Body-Cover | 1 | 50 | 105976 | Washer- #8 | 1 |
| 18 | 68747 | . Gasket | 1 | 51 | 88811 | Breaker Asy | 1 |
| 19 | 63097 | Spark Plug (B,F,G,K,U) | 1 | 52 | 84505A | Kit-Breaker Box | 1 |
| (19) | 93018 | Spark Plug (E) | 1 | 53 | 92037 | . Washer | 1 |
| 20 | 89274 | Rod-Throttle | 1 | 54 | 110639 | Screw-Hx hd 12-24 x 1 | 4 |
| 21 | 89059 | Hose-Fuel | 1 | 55 | 90665B | Kit-Cyl/C'Case/Piston | 1 |
| 22 | 90660 | Adaptor-Fuel hose | 1 | 56 | 83856 | . Bolt-Bar mounting | 1 |
| 23 | 110908 | "O" Ring | 1 | 57 | 68098 | . Piston Asy | 1 |
| 24* | 110970 | Nut-Hx 5/16-24 | 1 | 58 | 87165 | . . Set-Piston Rings | 1 |
| 25 | 91961 | Flywheel & Pawl Asy | 1 | 59 | 110538 | . . Bearing-Needle | 2 |
| 26 | 68796 | . Pin-Pawl | 2 | 60 | 66867 | Pin-Piston | 1 |
| 27 | 67814 | . Spring-Pawl | 2 | 61 | 68097 | Connecting Rod Asy | 1 |
| 28 | 91872 | . Pawl-Starter | 2 | 62 | 66853 | . Screw-Special | 2 |
| 29 | 102164 | Key-Woodruff | 1 | 63 | 68095 | . Roller-Needle (Set of 20) | 1 |
| 30 | 110586 | Screw-Pan hd 8-32 x 1-3/4 | 3 | 64 | 83859 | Seal-Oil | 2 |
| 31 | 105976 | Washer-#8 | 3 | 65 | 66854 | Bearing-Needle | 2 |
| 32 | 67177 | Washer-Insulating | 3 | 66 | 91932 | Crankshaft | 1 |
| 33 | 68198 | Tube Insulating | 3 | | | | |

*Flywheel nut torque should be 190 to 200 pound x inches (21.5 to 22.6 N.m) for nut, P/N 110970.

Service Specifications

| | |
|-----------------------|---------------------|
| Displacement | 2.0 cu. in. (32 cc) |
| Clutch Engaging Speed | 3800 to 4200 R.P.M. |
| Breaker Point Gap | .018" (.457 mm) |
| Timing | 26° B.T.D.C. |
| Spark Plug Gap | .025" (.635 mm) |