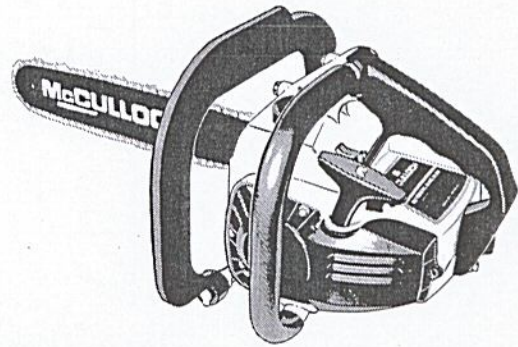


ILLUSTRATED PARTS LIST

MODELS	SERIAL NUMBER PREFIX
600017B	11-
600017U	11-

MAC 130 Chain Saw



JANUARY 1977

- CONTENTS -

	<u>Page</u>
Figure 1. General	2
Figure 2. CHAIN BRAKE Assembly ...	4
Figure 3. Carburetor Assembly	4
Figure 4. Powerhead Assembly	6
Accessories	5
Service Specifications	7

McC Model Chain Saws are identified by a model number (000000) followed by a suffix letter (A, B, C etc.) stamped on the identification plate attached to the saw. Suffix letters denote variations in parts or assemblies in the manufacture of the saw.

Part numbers listed in this IPL which have a suffix letter or letters following the description, indicate the part is used only on the model(s) identified by the letter or letters.

Part numbers and descriptions without suffix letter or letters apply to all models of the MAC 130 chain saw.

Part numbers which have one or more dots (.) preceding their description may be ordered individually but they are also included in the kit or assembly whose description begins directly above the dot(s).

Part numbers which have changed since the previous printing of the IPL covering these saws, are indicated by a dash (-) preceding the new part number.

The policy of McCulloch Corporation is one of continual improvement in design, manufacturing and engineering advancement wherever possible to assure still finer two-cycle power tools. Hence, specifications, equipment, colors, design and manufacturer's suggested list prices are subject to change without notice and McCulloch Corporation reserves the right to make such changes without prior notification or obligation to backfit or supply backfit components for units previously shipped from the factory.



MAC130

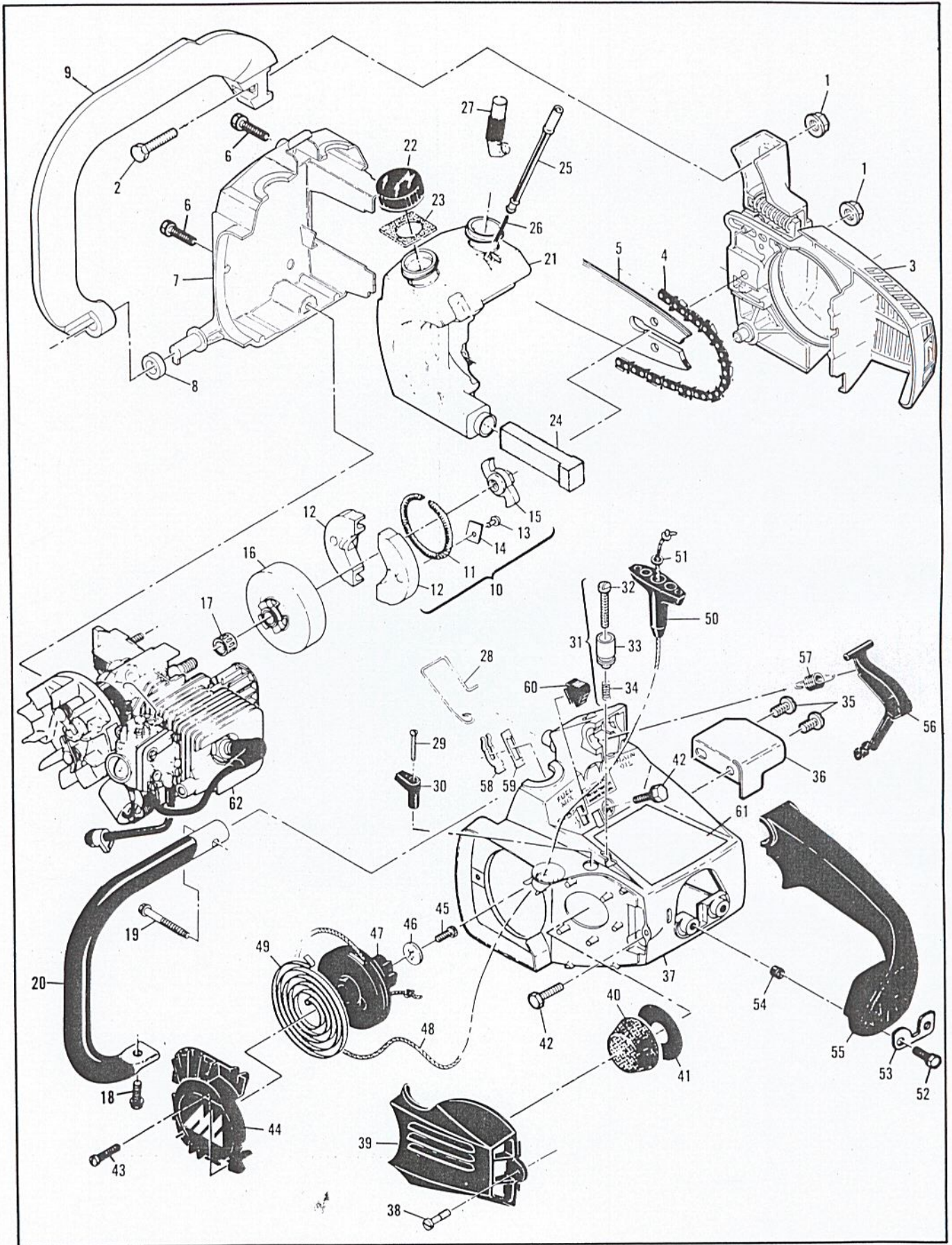


Figure 1. General

Figure 1. General

Item No.	Part Number	Description	Units Per Asy	Item No.	Part Number	Description	Units Per Asy
1	110676	Nut-Hx 1/4-28	2	31*		Latch Asy-Throttle	1
2	110972	Screw-Hx 1/4-28	1	32*		. Screw-Long lock	1
3		CHAIN BRAKE Asy (Fig.2)		33*		. Latch-Throttle	1
4		Chain Asy (See Accessories)		34*		. Spring-Compression	1
5		Bar (See Accessories)		35	110807	Screw Pan 8-32 x .312	2
6	110639	Screw-Hx hd 12-24 x 1	2	36	93290	Deflector-Sawdust	1
7	92868	Cover-Fuel & Oil tank	1	37	91859	Kit-Shroud Asy	1
8	93194	Washer-Rubber	1	38	91796	. Screw-Air cleaner	1
9	92479	Lever-Handguard	1	39	91853	. Cover-Air cleaner	1
10	92743	Clutch Asy	1	40	85127	Filter-Air	1
11	93608	. Spring Asy-Clutch	1	41	84918	Washer-Air seal	1
12	92668	. Kit-Clutch shoe	2	42	110953	Screw-Hx hd 12-24 x 5/8	3
13	110957	. . Rivet	2	43	110959	Screw-Hx hd 8-32 x 1/2	3
14	85064	. . Plate	2	44	90425	Cover-Starter	1
15	92721	. Spider	1	45	110041	Screw-Pan hd 8-32 x 1/2	1
16	90150B	Drum/Spkt/Brng Asy	1	46	68497	Washer-Special	1
17	91222	. Kit-Needle Brng	1	47	92316	Drum/Rope Asy	1
18	110953	Screw-Hx hd 12-24 x 5/8	1	48	83203	. Rope-Starter	1
19	110686	Screw-Hx hd 13-16 x 2	1	49	83078	Spring-Rewind	1
20	84791	Frame & Grip Asy	1	50	91255	Kit-Starter handle	1
21	91454A	Kit-Fuel & Oil tank	1	51	105490	. Washer-Starter handle	1
22	91283	. Cap-Fuel & Oil (Unvented)	2	52	110953	Screw-Hx hd 12-24 x 5/8	1
23	91148	. Seal-Fuel vent	1	53	84520A	Plate-Washer	1
24	84956	. Pickup-Fuel	1	54	84519	Sleeve-Handle	2
25	83900A	. Piston-Manual oiler	1	55	83852A	Handle	1
26	83946	. Spring-Piston	1	56	83878	Trigger	1
27	85557	. Body-Oiler	1	57	83940	Spring-Trigger	1
28	84611	Rod-Manual oiler	1	58	83935	Contact-Switch	1
29	110672	Screw-Oval hd 4-40 x 1	1	59	83936	Protector-Switch	1
30	83870	Knob-Choke	1	60	83934	Button-Switch	1
				61	93542	Plate-Name	1
				62		Powerhead Asy (Fig. 4)	

*Part of Carburetor Kit, P/N 90918A, refer to Fig. 3.

Service Specifications

Displacement	1.8 cu. in. (30cc)
Clutch Engaging Speed	2800 R.P.M.
Breaker Point Gap	.018" (.457 mm)
Timing	26° B.T.D.C.
Spark Plug Gap	.025" (.635 mm)

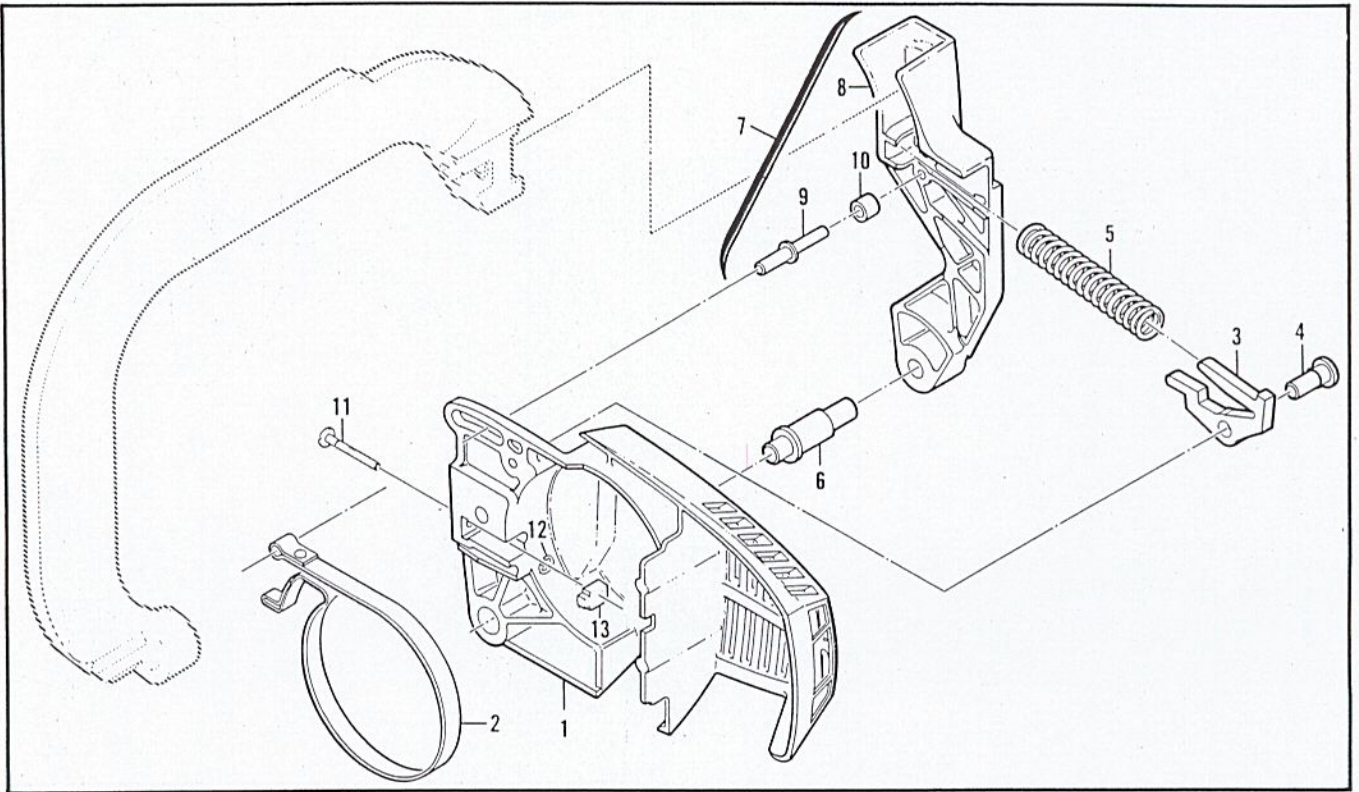


Figure 2. CHAIN BRAKE Assembly

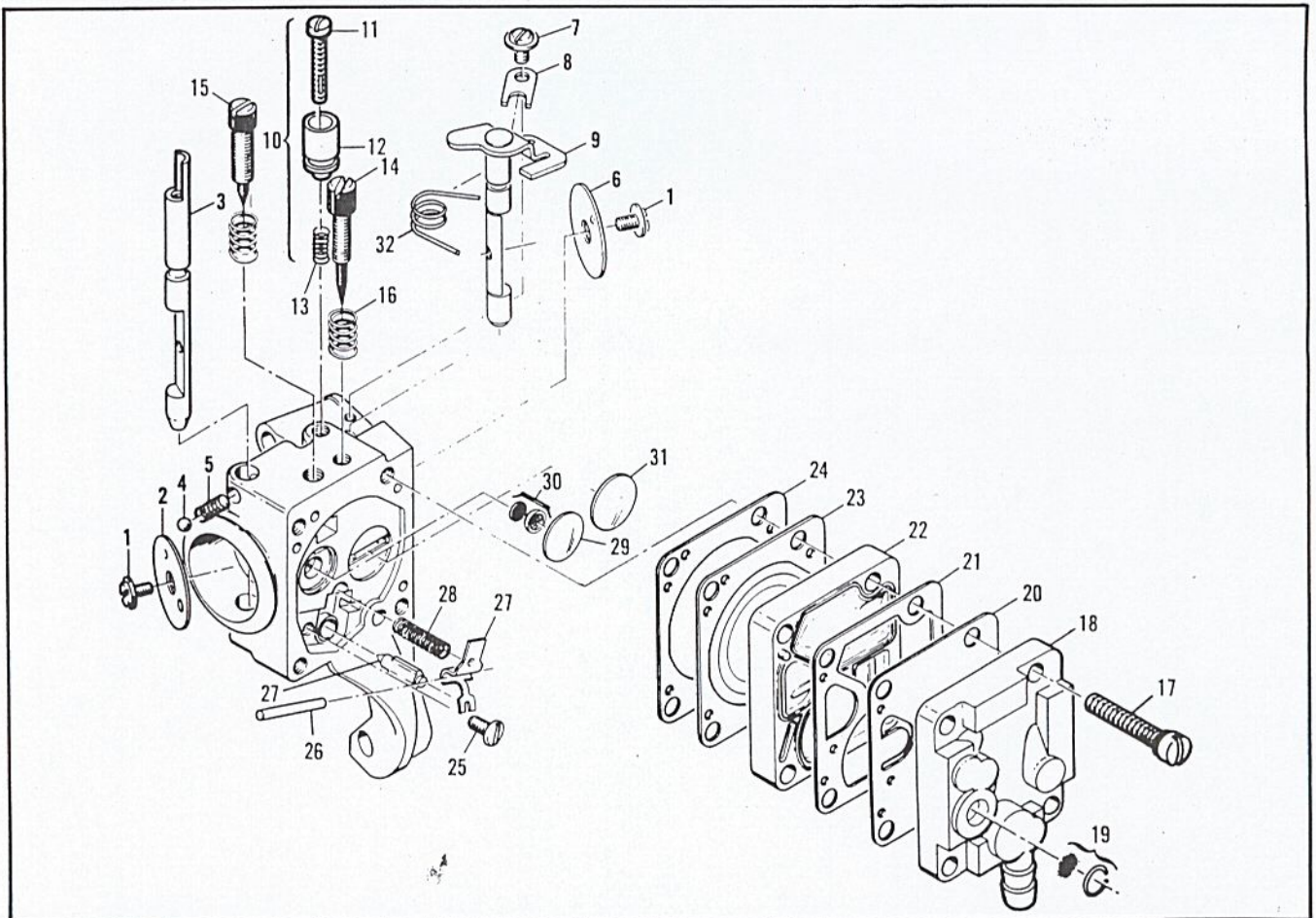


Figure 3. Carburetor Assembly

Figure 2. CHAIN BRAKE Assembly

Item No.	Part Number	Description	Units Per Asy
	92489	CHAIN BRAKE Asy	
1	92866	. Housing-Brake	1
2	92487	. Band-Brake	1
3	93092	. Latch	1
4	92485	. Pivot-Latch	1
5	93140	. Spring	1
6	92482	. Pivot-Lever	1

Item No.	Part Number	Description	Units Per Asy
7	93467	. Lever Asy-Actuating	1
8	92867	. . Lever	1
9	93139	. . Pin-Roller	1
10	93147	. . Bearing-Roller	1
11	90658	. Screw-Adjusting	1
12	110907	. Ring-Retaining	1
13	84929	. Nut-Bar adj.	1

Accessories

Part Number	Description
90550	Bar-14" Mini Pro
90643N	Chain-MP 370G
93090	Guide-Timing
93282	Case-Carrying (14" Guard)
90256	Kit-Tune up

Part Number	Description
68915A	Kit-Piston Tool
89685	Kit-Spark Arrester
88756	Scrench
90607A	Guide-File
92977	Guard-Bar, 14"

Figure 3. Carburetor Assembly

Item No.	Part Number	Description	Units Per Asy
	90918A	Carburetor Asy-Walbro MDC 13	
1*	83755	. Screw-Plate	2
2	68556	. Plate-Choke	1
3	85033	. Shaft-Choke	1
4*	100302	. Ball-Choke friction	1
5*	67504	. Spring-Choke friction	1
6	68553	. Plate-Throttle	1
7	70798	. Screw-Clip	1
8	68554	. Clip-Throttle shaft	1
9	90471	. Shaft Asy-Throttle	1
10	93437	. Lock Asy-Throttle	1
11		. . Screw-Long lock	1
12		. . Lock-Throttle	1
13		. . Spring Compression	1
14*	86446	. Needle-Idle	1
15*	86447	. Needle-High speed	1
16*	67502	. Spring-Needle	2
17*	68564	. Screw Asy-Body	4

Item No.	Part Number	Description	Units Per Asy
18	91347	. Cover Asy-Pump	1
19	85629	. . Kit-Vent screen	1
20*	68563	. Diaphragm-Fuel pump	1
21*	85035	. Gasket-Pump diaphragm	1
22	85030	. Body-Fuel pump	1
23*	85036	. Diaphragm-Metering	1
24*	85034	. Gasket-Diaphragm	1
25*	67500	. Screw-Lever pin	1
26*	67508	. Pin-Lever	1
27	85059	. Kit-Needle & Lever	1
28*	68567	. Spring-Lever	1
29*	68559	. Plug-Welsh 7/16	1
30*	83758	. Kit-Check valve	1
31*	68560	. Plug-Welsh 1/2	1
32	89785	. Spring-Throttle return	1
	86463	Repair Kit	

*Included in Repair Kit, P/N 86463

MAC130

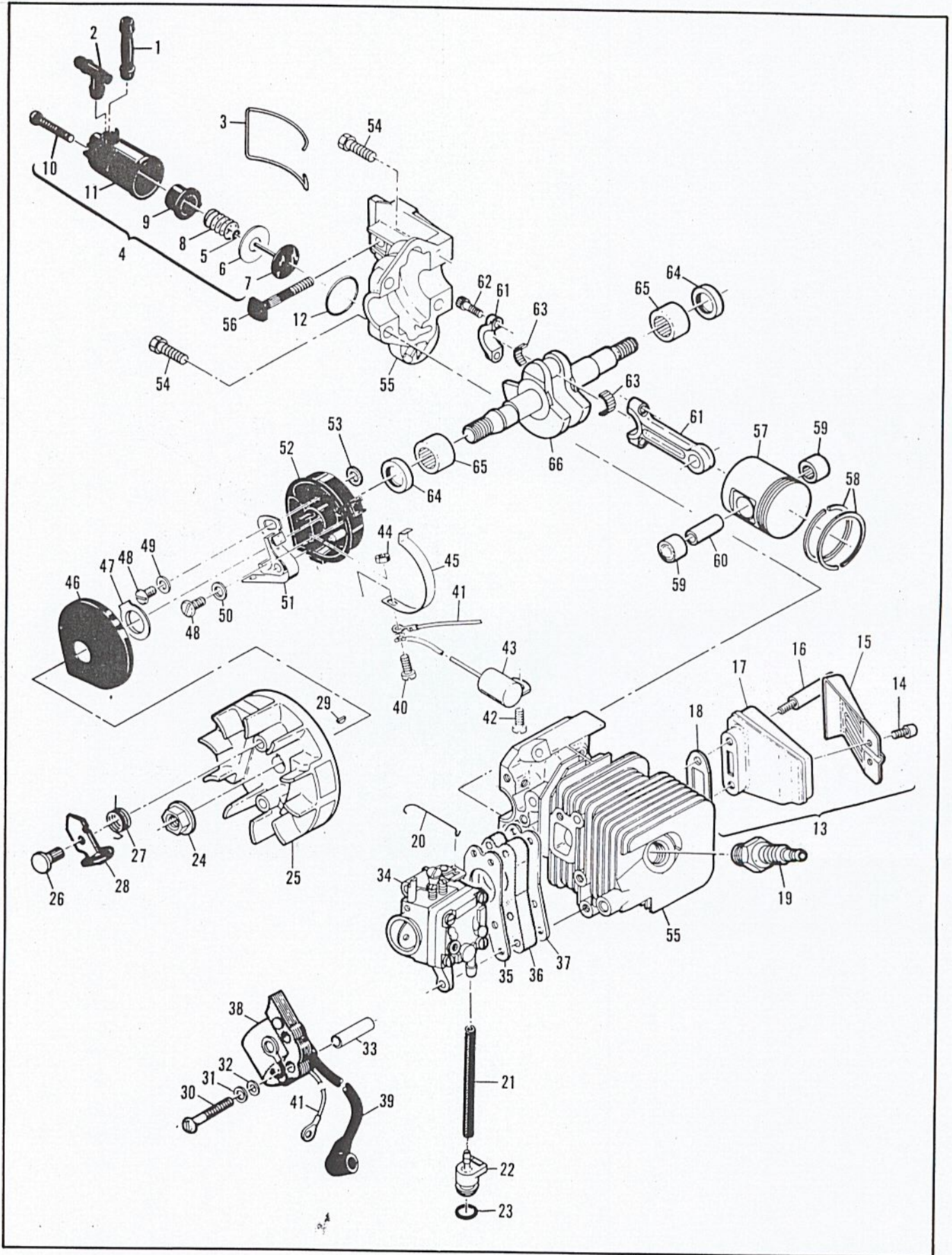


Figure 4. Powerhead Assembly

Figure 4. Powerhead Assembly

Item No.	Part Number	Description	Units Per Asy	Item No.	Part Number	Description	Units Per Asy
1	83898	Connector-Outlet	1	34		Carburetor Asy (Fig. 3)	
2	84613	Connector-Pump	1	35	68197	Gasket-Carburetor	1
3	83896	Bail-Mounting	1	36	90713	Insulator-Carburetor	1
4	83886	Pump Asy-Oiler	1	37	90714	Gasket-Insulator	1
5	105603	. "O" Ring	1	38	84957	Coil & Lamination Asy	1
6	85769	. Ring-Pump piston	1	39	50120	. Wire Asy-Spark plug	1
7	92204	. Piston Asy-Pump	1	40	110617	Screw-Pan hd 6-32 x 5/8	1
8	83891	. Spring-Pump	1	41	69344	Wire Asy-Coil	1
9	83890	. Sleeve-Pump	1	42	110041	Screw-Pan hd 8-32 x 1/2 s/t	1
10	110651	. Screw-Adjustment	1	43	85358	Condenser	1
11	83887	. Body Asy-Pump	1	44	110975	Nut-Hx 6-32	1
12	110653	. "O" Ring	1	45	84502	Connector-Stop switch	1
13	92962	Kit-Muffler	1	46	67841	Cover-Breaker box	1
14	110681	. Screw-Skt hd 10/24 x 1/4	2	47	69323	Seal-Breaker box	1
15	92961	. Deflector-Exhaust	1	48	110969	Screw-Hx hd 8-32 x 1/2	2
16	93036	. Screw-Special	2	49	69322	Washer-Special	1
17	92956	. Body-Cover	1	50	105976	Washer- #8	1
18	68747	. Gasket	1	51	88811	Breaker Asy	1
19	63097	Spark Plug (B,U)		52	84505A	Kit-Breaker Box	1
20	89274	Rod-Throttle	1	53	92037	. Washer	1
21	89059	Hose-Fuel	1	54	110639	Screw-Hx hd 12-24 x 1	4
22	90660	Adaptor-Fuel hose	1	55	90665B	Kit-Cyl/C'Case/Piston	1
23	110908	"O" Ring	1	56	83856	. Bolt-Bar mounting	1
24*	110970	Nut-Hx 5/16-24	1	57	68098	. Piston Asy	1
25	91961	Flywheel & Pawl Asy	1	58	87165	. . Set-Piston Rings	1
26	68796	. Pin-Pawl	2	59	110538	. . Bearing-Needle	2
27	67814	. Spring-Pawl	2	60	66867	Pin-Piston	1
28	91872	. Pawl-Starter	2	61	68097	Connecting Rod Asy	1
29	102164	Key-Woodruff	1	62	66853	. Screw-Special	2
30	110586	Screw-Pan hd 8-32 x 1-3/4	3	63	68095	. Roller-Needle (Set of 20)	1
31	105976	Washer-#8	3	64	83859	Seal-Oil	2
32	67177	Washer-Insulating	3	65	66854	Bearing-Needle	2
33	68198	Tube Insulating	3	66	91932	Crankshaft	1

*Flywheel nut torque should be 190 to 200 pound x inches (21.5 to 22.6 N.m) for nut, P/N 110970.

Service Specifications

Displacement	2.0 cu. in. (32 cc)
Clutch Engaging Speed	3800 to 4200 R.P.M.
Breaker Point Gap	.018" (.457 mm)
Timing	26° B.T.D.C.
Spark Plug Gap	.025" (.635 mm)